

ORGANIZATION CHART
Chart I

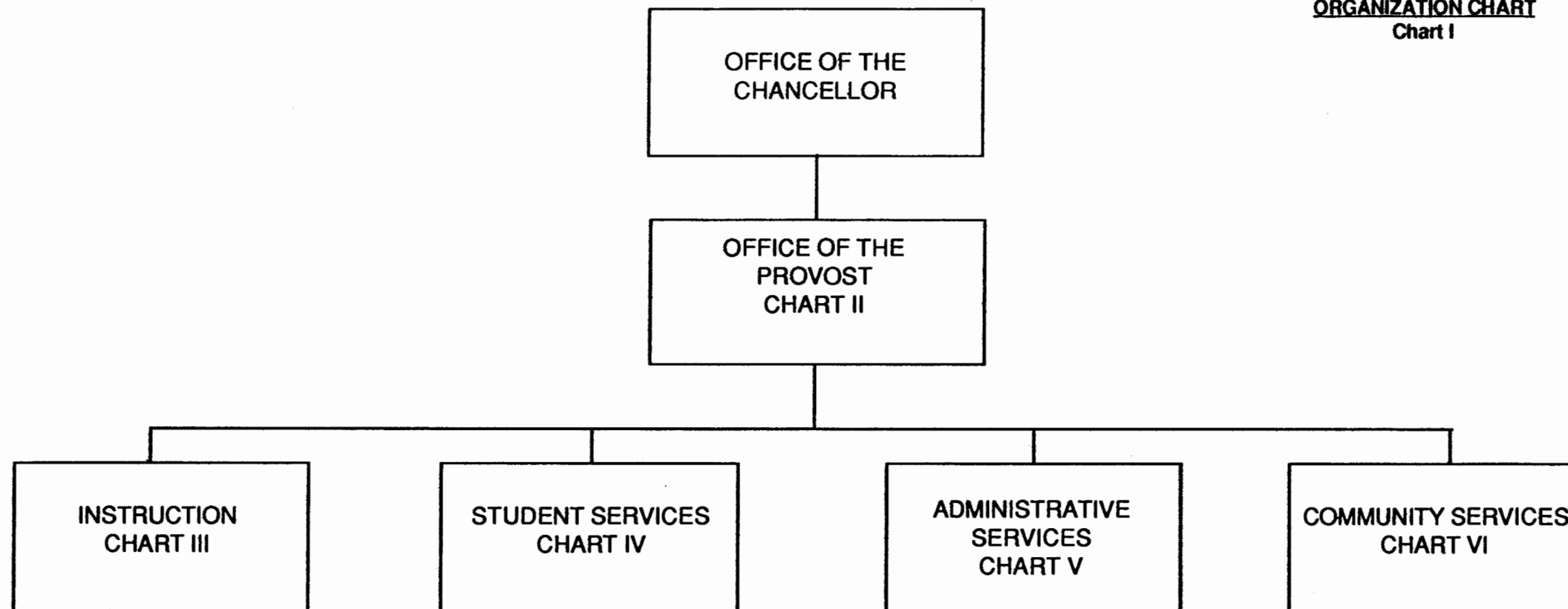


CHART UPDATED
DATE JUN 30 1994

State of Hawai'i
University of Hawai'i
Kaua'i Community College
Office of the Provost
ORGANIZATION CHART
Chart II

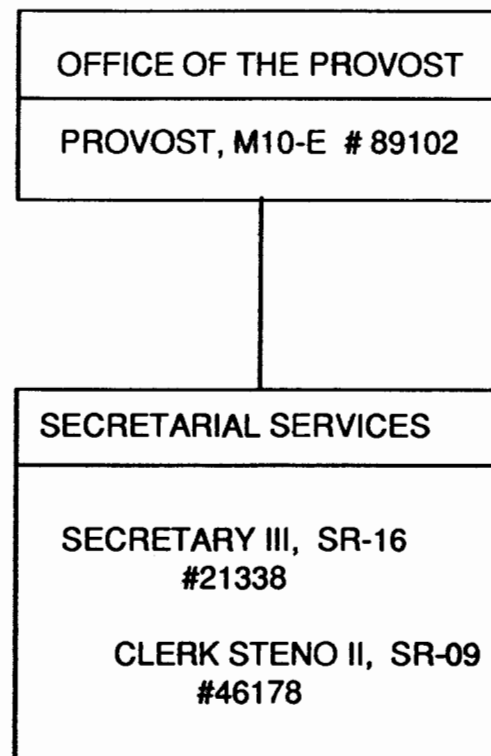


CHART UPDATED
DATE JUN 30 1994

GENERAL FUNDS 3.00

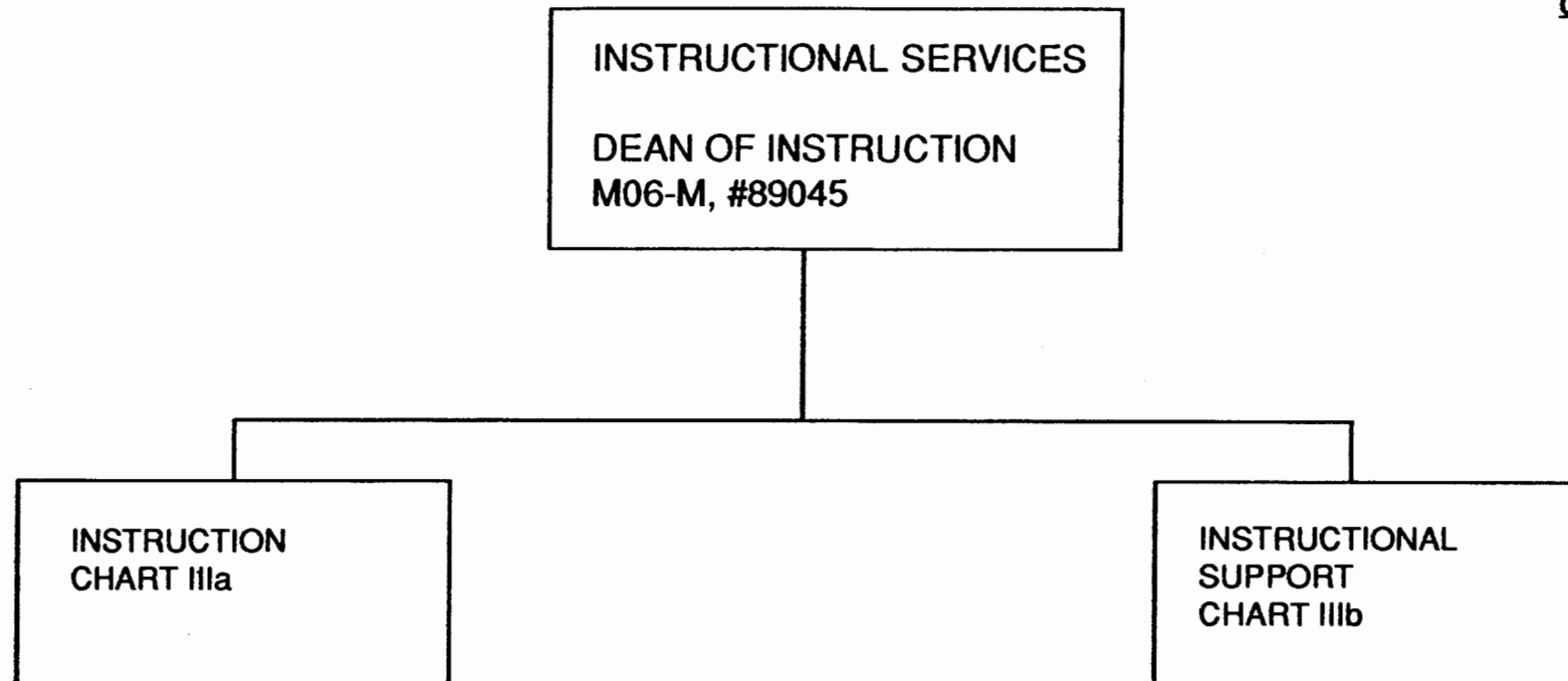


CHART UPDATED
DATE **JUN 30 1994**

GENERAL FUNDS 1.00

INSTRUCTION

DEAN, M06-M

State of Hawai'i
University of Hawai'i
Kaua'i Community College
Instruction

ORGANIZATION CHART

Chart IIIa

STENO POOL

CLERK-STENO II, SR-9

#26901, 26902, 24785, 42211

SECRETARIAL SERVICES

SECRETARY II, SR-14

#24393

**LANGUAGE ARTS AND
HUMANITIES DIVISION**

CHAIRPERSON, # ____*
FACULTY

FOREIGN/ASIAN/
PAC. LANG

#87094, #87119A (.50)

ART

#83324, 83640

ENGLISH

#85047, 82265, 83727,
84176, 84277

HISTORY

#82274

PHILOSOPHY

#82149

SPEECH

#82262

MUSIC

#86618

HAWAIIAN STUDIES

#86811

THINKING & WRITING

#87015

DRAMA

#87119 (.50)

**MATHEMATICS/SCIENCE/
SOCIAL SCIENCE DIVISION**

CHAIRPERSON, # ____*
FACULTY

MATH

#84652, 84443

CHEMISTRY

#83179

BIOLOGICAL SCIENCE

#82934

PHYSICAL SCIENCE

#83645

PSYCHOLOGY

#83567

ANTHROPOLOGY

#83208

SOCIOLOGY

#82416

POLITICAL SCIENCE

#85046

COMPUTER SCIENCE

#85048

**TRADE AND
TECHNOLOGY DIVISION**

CHAIRPERSON, # ____*
FACULTY

AUTO TECHNOLOGY

#84392, 84612

AUTO BODY REPAIR

#84153

CARPENTRY

#83132

ELECTRICITY

#84605

MACHINE SHOP

#85045

ELECTRONICS

#83175, 86617

FACILITIES ENG.

#84657

**HEALTH EDUCATION
DIVISION**

CHAIRPERSON, # ____*
FACULTY

NURSING

#83856, 82579, 83216,
84687, 84015, 86763,
86765, 86779, 86786,
86889

HEALTH P.E.

#86118

EARLY CHILDHOOD

#86810

UH ED. SUP SP II

#80623

UH ED. & AC.

SUP SP I

#80613

**BUSINESS EDUCATION
DIVISION**

CHAIRPERSON, # ____*
FACULTY

ACCOUNTING

#84611, 82261

BUSINESS

#83732, 82376

SALES & MANAGEMENT

#82808, 85044

SECRETARIAL & RELATED

#82968, 83874

VISITOR INDUS. PROG

#86901, 85043

FOOD SERVICES

#86579, 87014

UH ED. & AC. SUP SP I

#81918, 80241S (W)

CAFETERIA HELPER

#48456 (W)

GENERAL FUNDS 66.00
REVOLVING FUND 2.00

*Appointed from instructional positions within divisions on a rotating basis.

CHART UPDATED

DATE **JUN 30 1994**

State of Hawai'i
University of Hawai'i
Kaua'i Community College
Academic Support
ORGANIZATION CHART
Chart IIIb

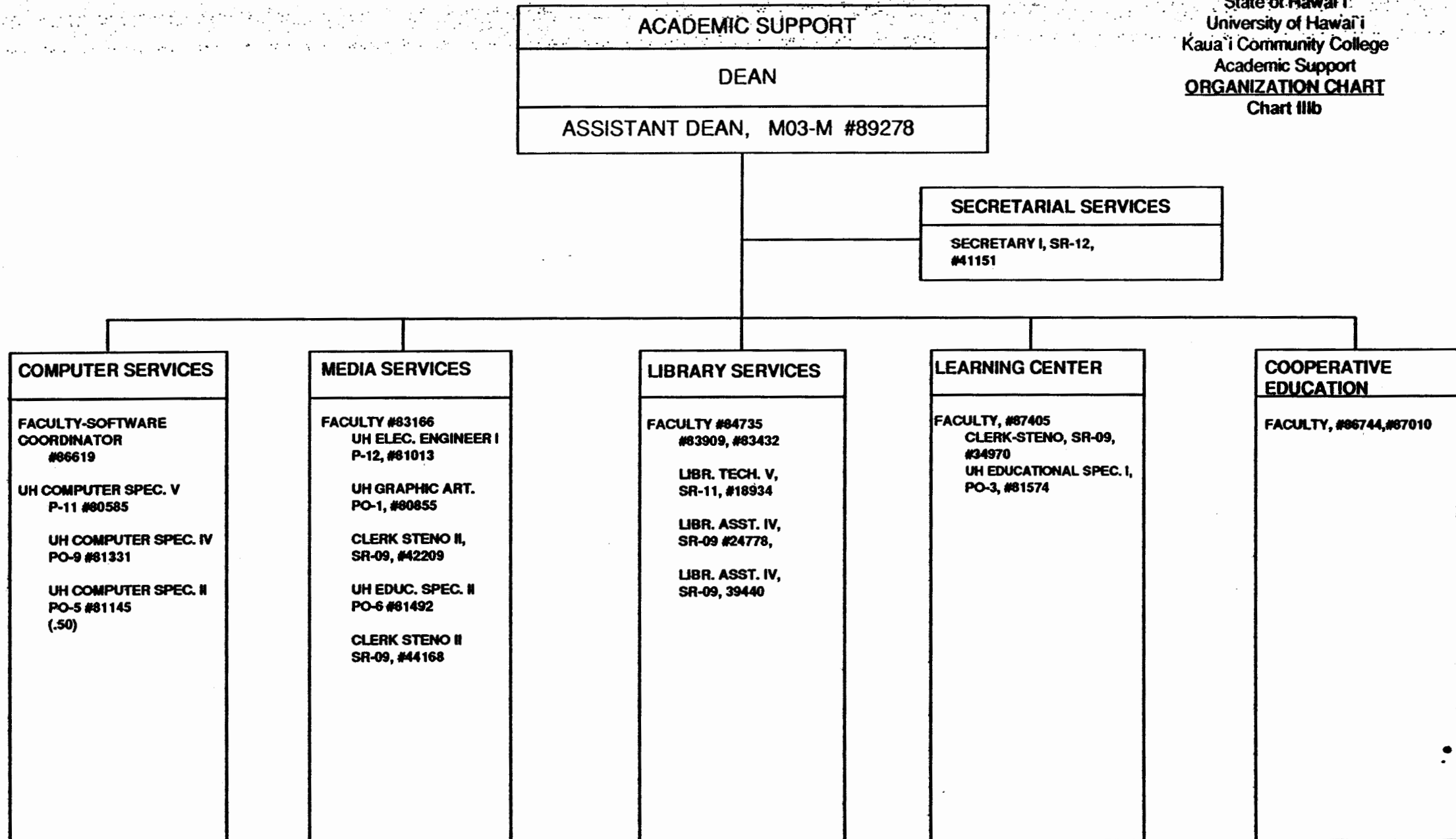
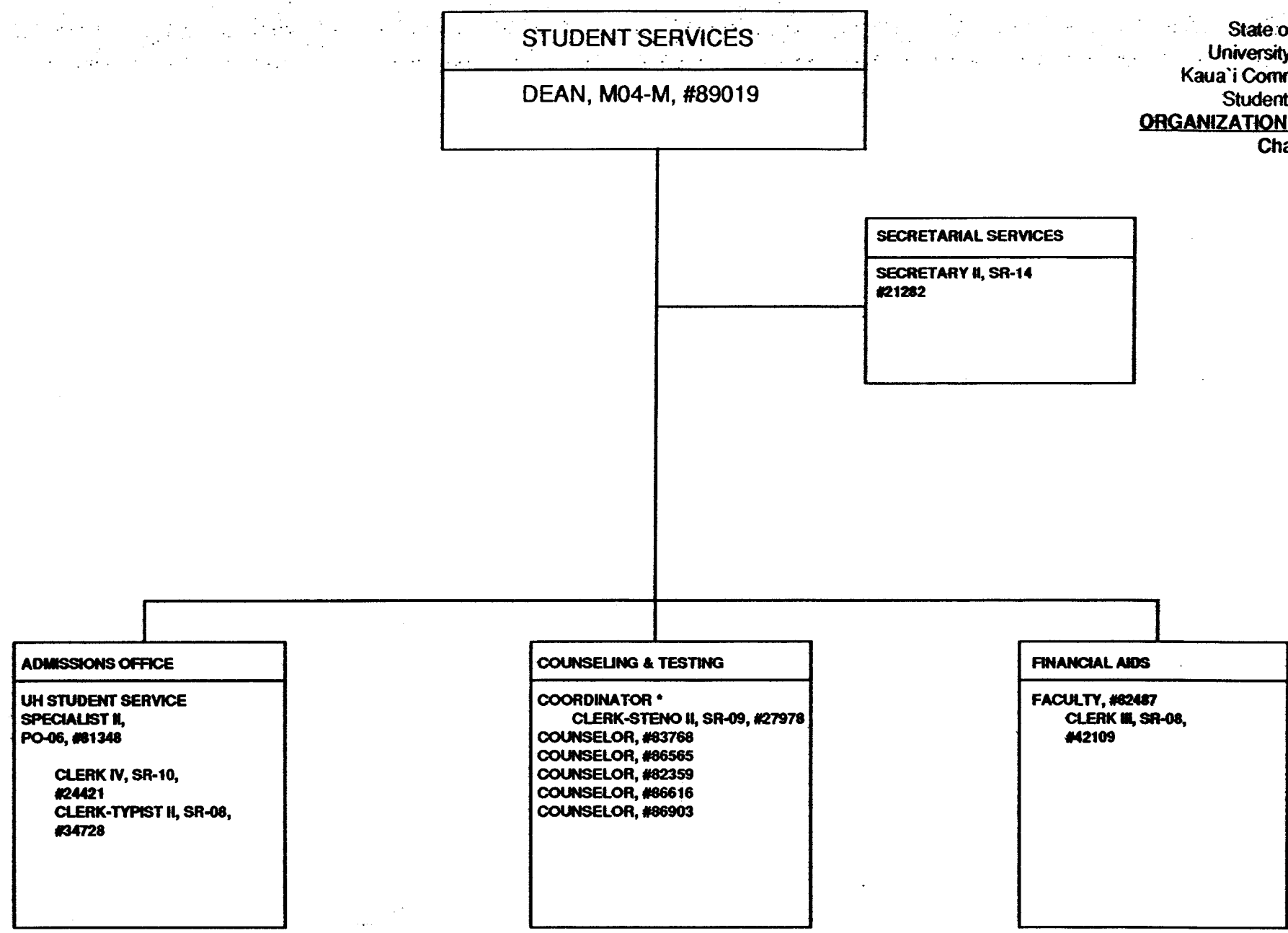


CHART UPDATED
DATE **JUN 30 1994**

GENERAL FUNDS 22.50

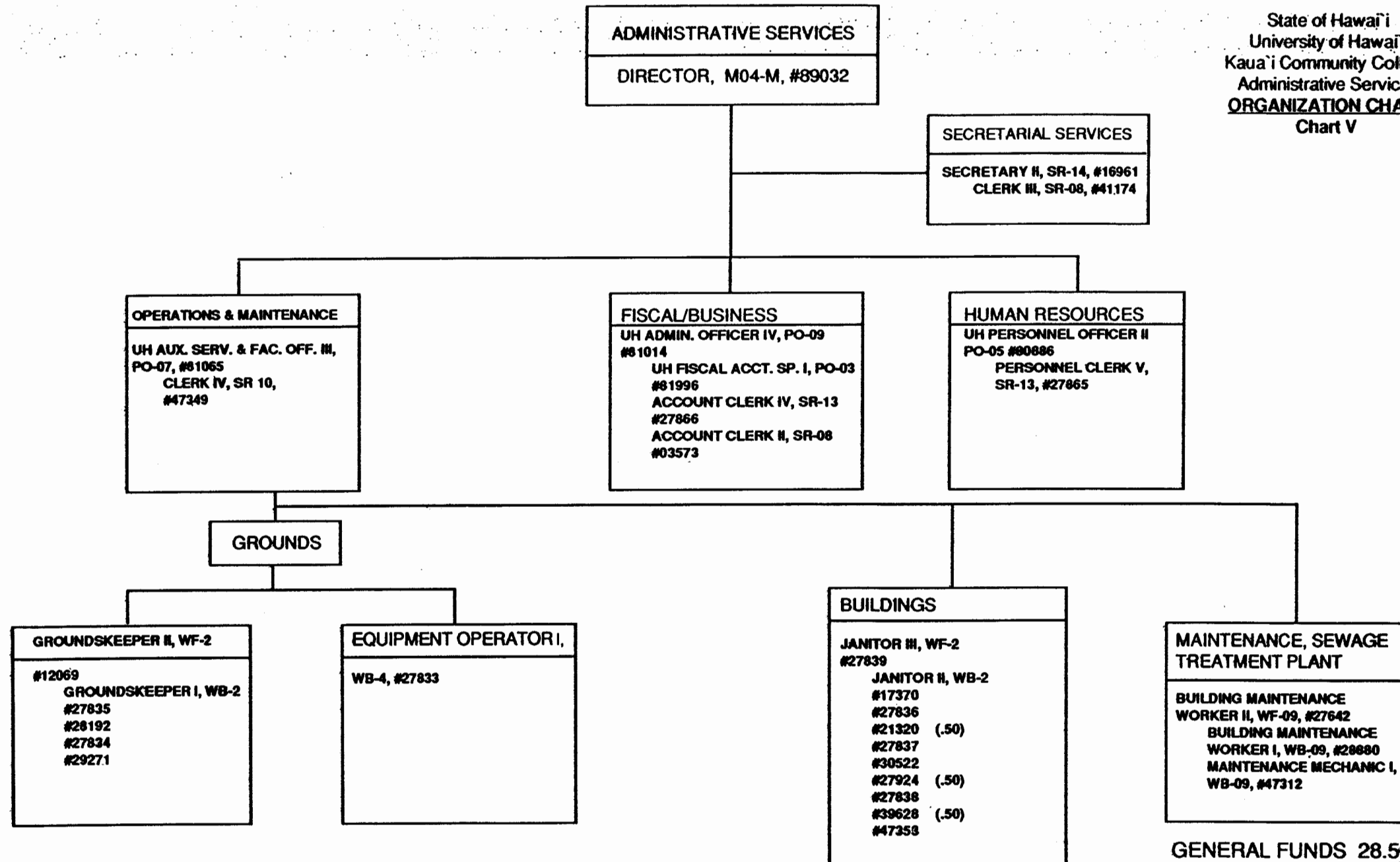


*Coordinator is appointed from among faculty positions within unit.

GENERAL FUNDS 13.00

CHART UPDATED
DATE **JUN 30 1994**

State of Hawai'i
University of Hawai'i
Kaua'i Community College
Administrative Services
ORGANIZATION CHART
Chart V



GENERAL FUNDS 28.50
CHART UPDATED
JUN 30 1994
DATE _____

State of Hawai'i
University of Hawai'i
Kaua'i Community College
Community Services
ORGANIZATION CHART
Chart VI

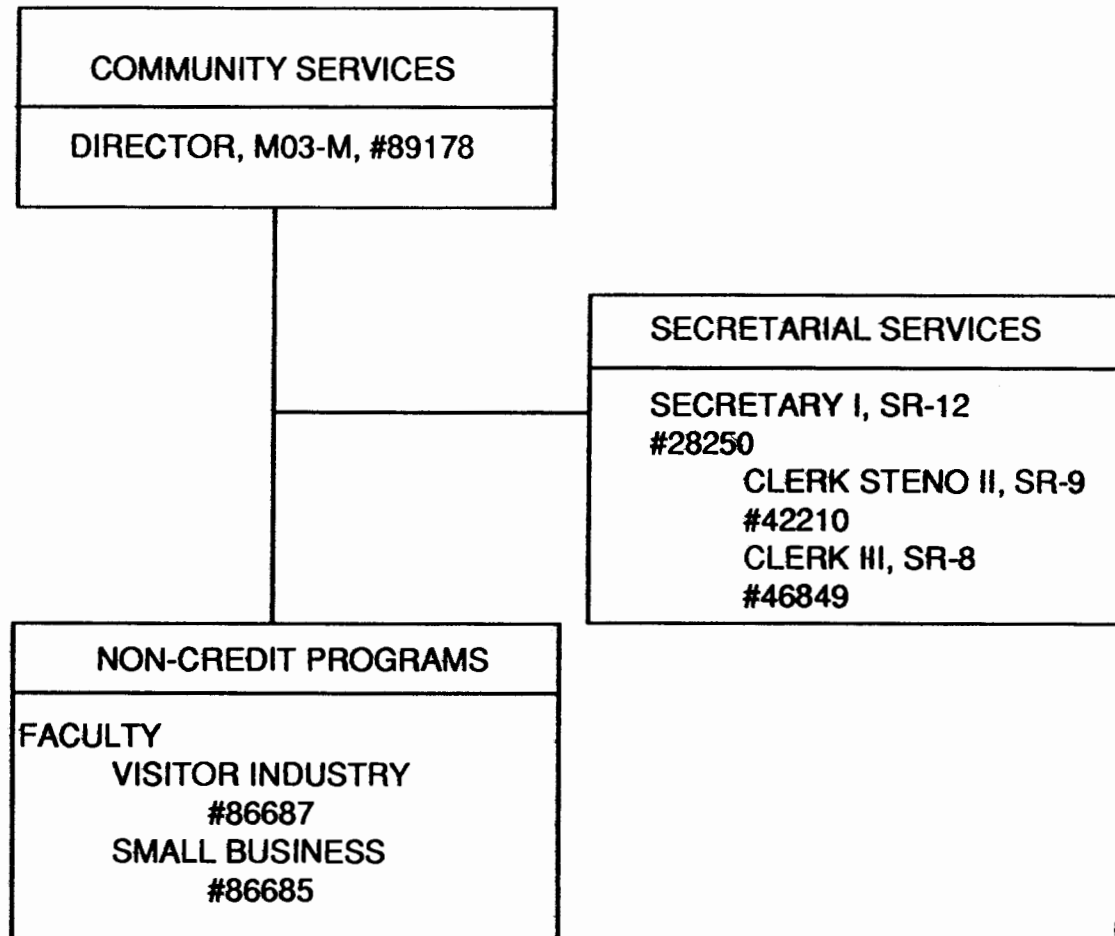


CHART UPDATED
DATE **JUN 30 1994**

GENERAL FUNDS 6.00