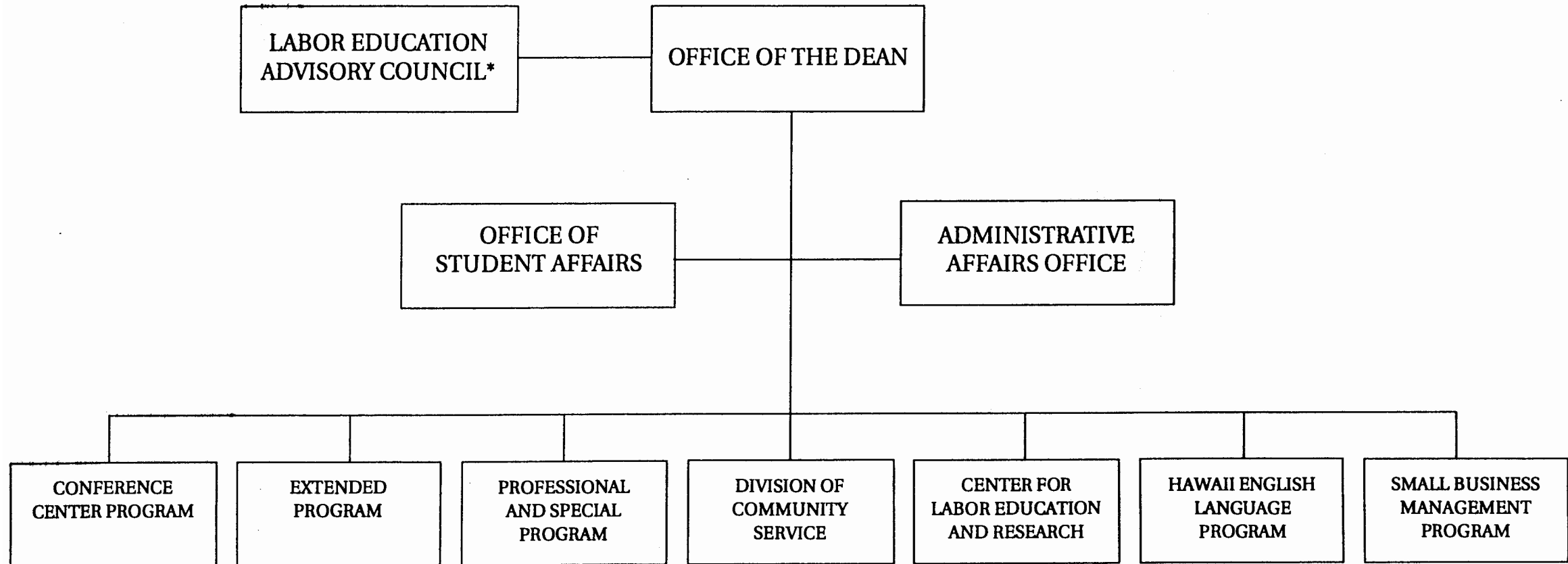
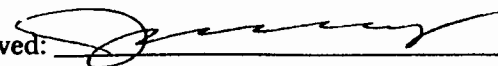


UNIVERSITY OF HAWAII AT MĀNOA
COLLEGE OF CONTINUING EDUCATION
AND COMMUNITY SERVICES

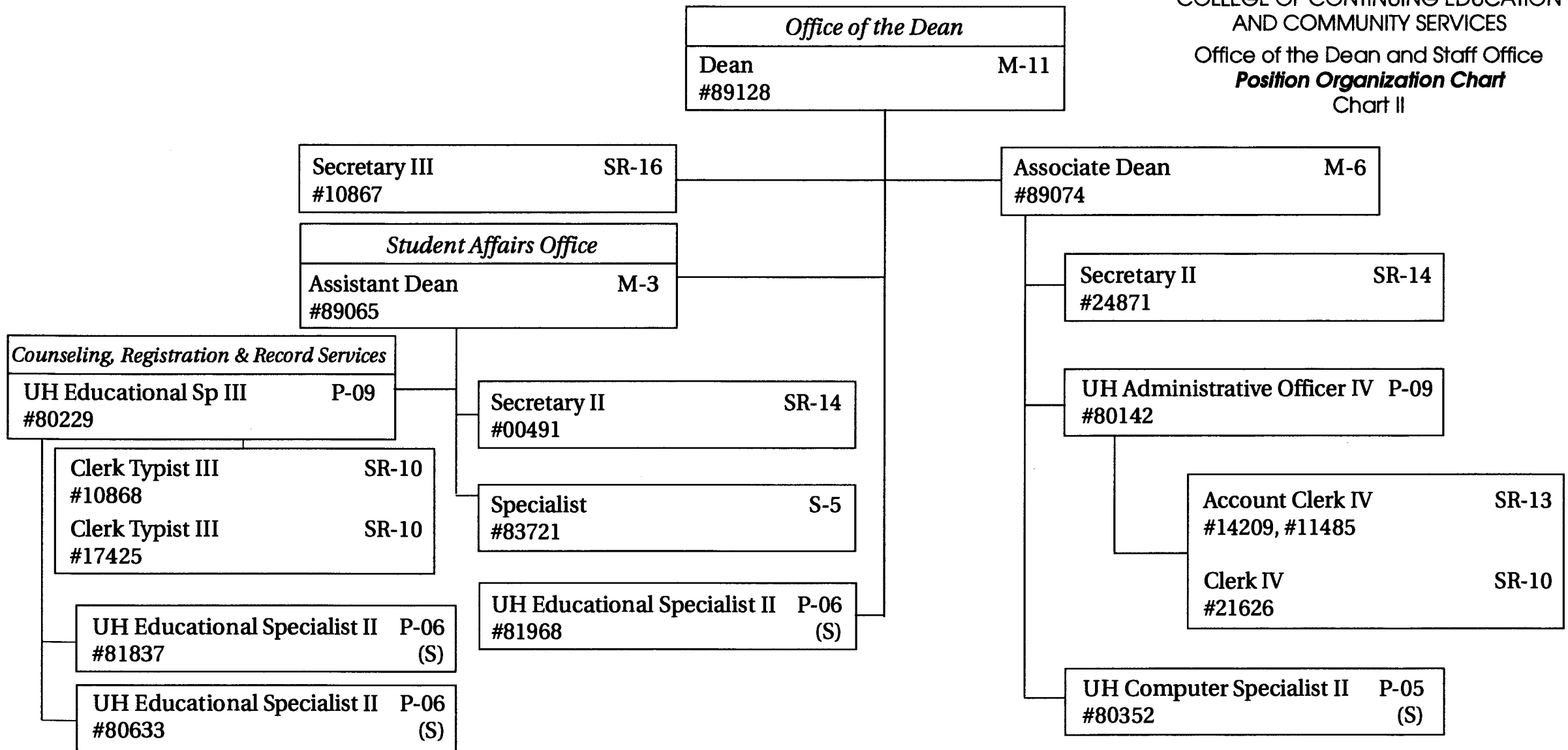
Organization Chart
Chart I



*Act 202, SLH 1976, Advisory Body to the Dean
for the Center for Labor Education and Research

Approved: 
Title: DEAN
Date: 8/3/44

UNIVERSITY OF HAWAII AT MĀNOA
COLLEGE OF CONTINUING EDUCATION
AND COMMUNITY SERVICES
Office of the Dean and Staff Office
Position Organization Chart
Chart II

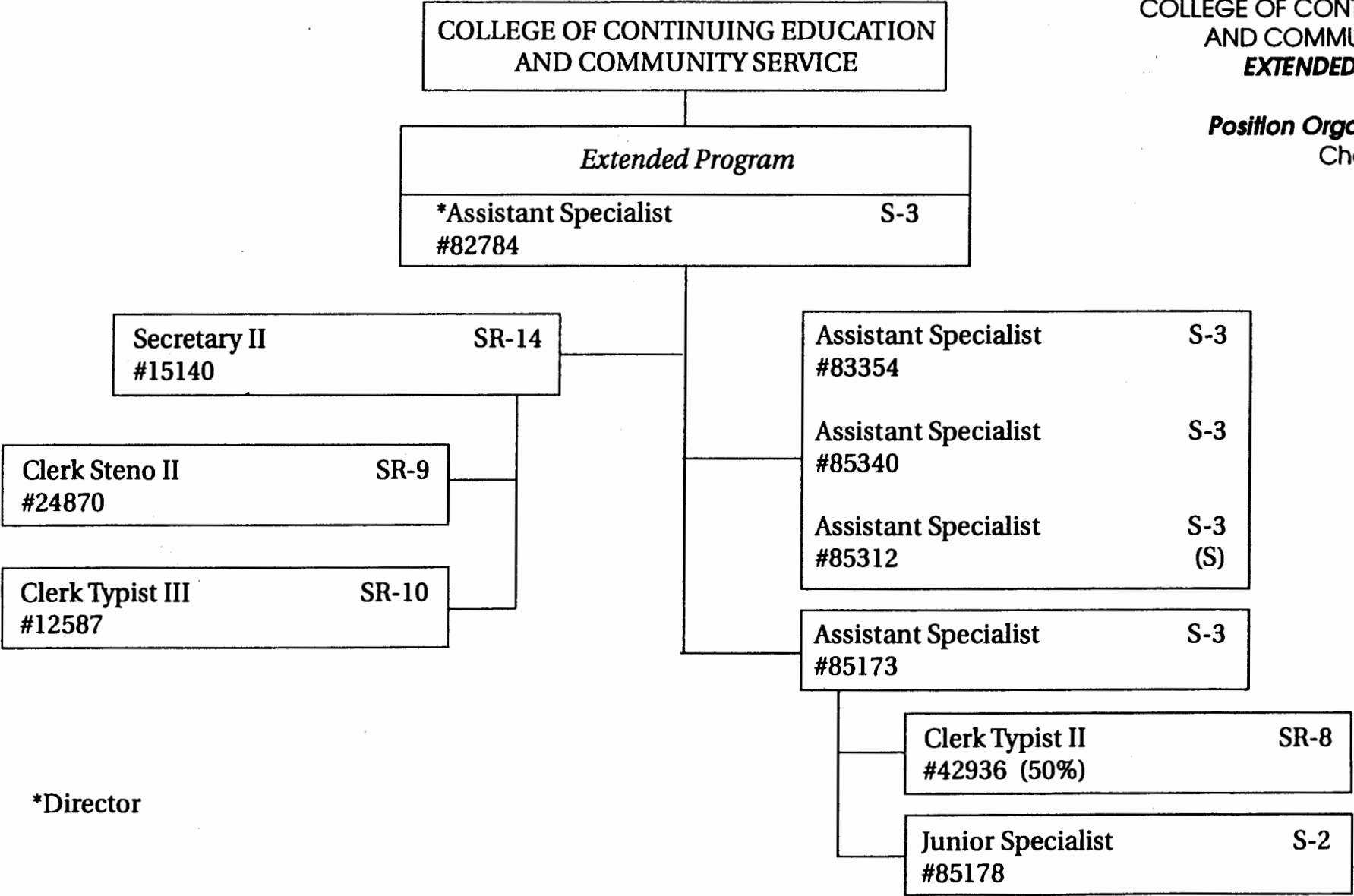


"Pending Establishment"
Pseudo No. 94025F Clerk Typist III
Pseudo No. 94026F Cashier I

CHART UPDATED
DATE **JUN 30 1994**

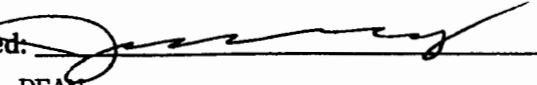
UNIVERSITY OF HAWAI'I AT MĀNOA
COLLEGE OF CONTINUING EDUCATION
AND COMMUNITY SERVICES
EXTENDED PROGRAM

Position Organization Chart
Chart III



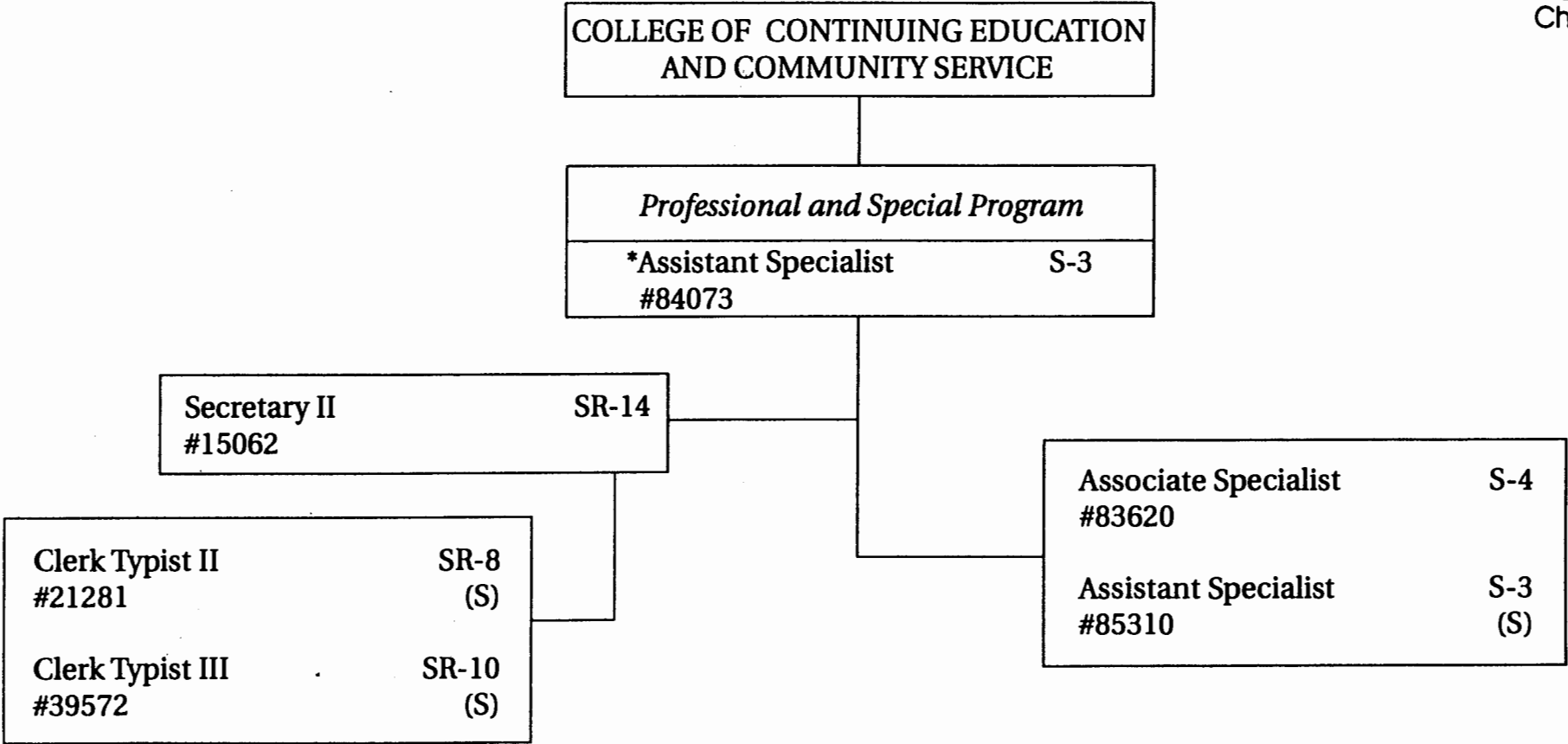
*Director

"Pending Establishment"
Pseudo No. 94532F Assistant Specialist

Approved: 
Title: DEAN
Date: 8/3/94

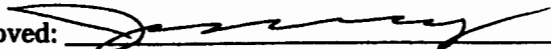
UNIVERSITY OF HAWAII AT MĀNOA
COLLEGE OF CONTINUING EDUCATION
AND COMMUNITY SERVICES
PROFESSIONAL AND SPECIAL PROGRAM

Position Organization Chart
Chart III-A



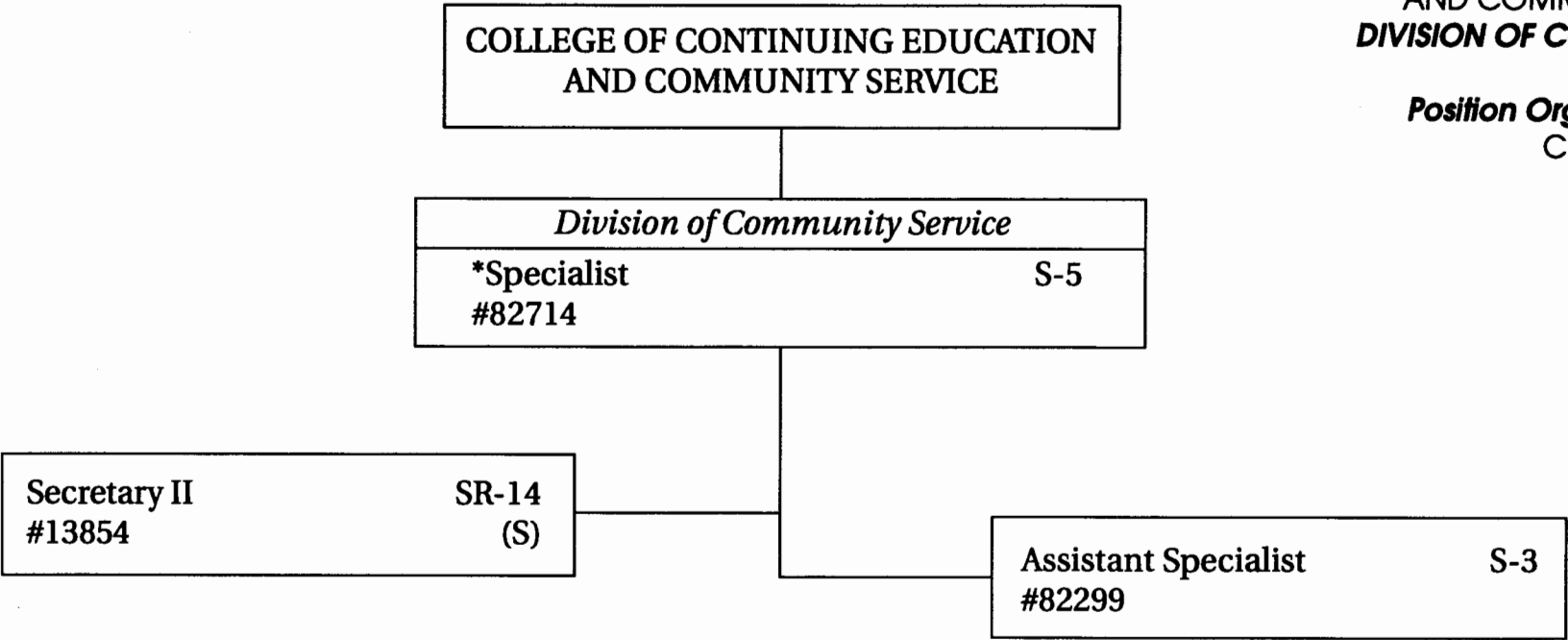
* Serves as Director.

“Pending Establishment”
Pseudo No. 94527F Assistant Specialist

Approved: 
Title: DEAN
Date: 8/3/94

UNIVERSITY OF HAWAII AT MANOA
COLLEGE OF CONTINUING EDUCATION
AND COMMUNITY SERVICES
DIVISION OF COMMUNITY SERVICE

Position Organization Chart
Chart IV

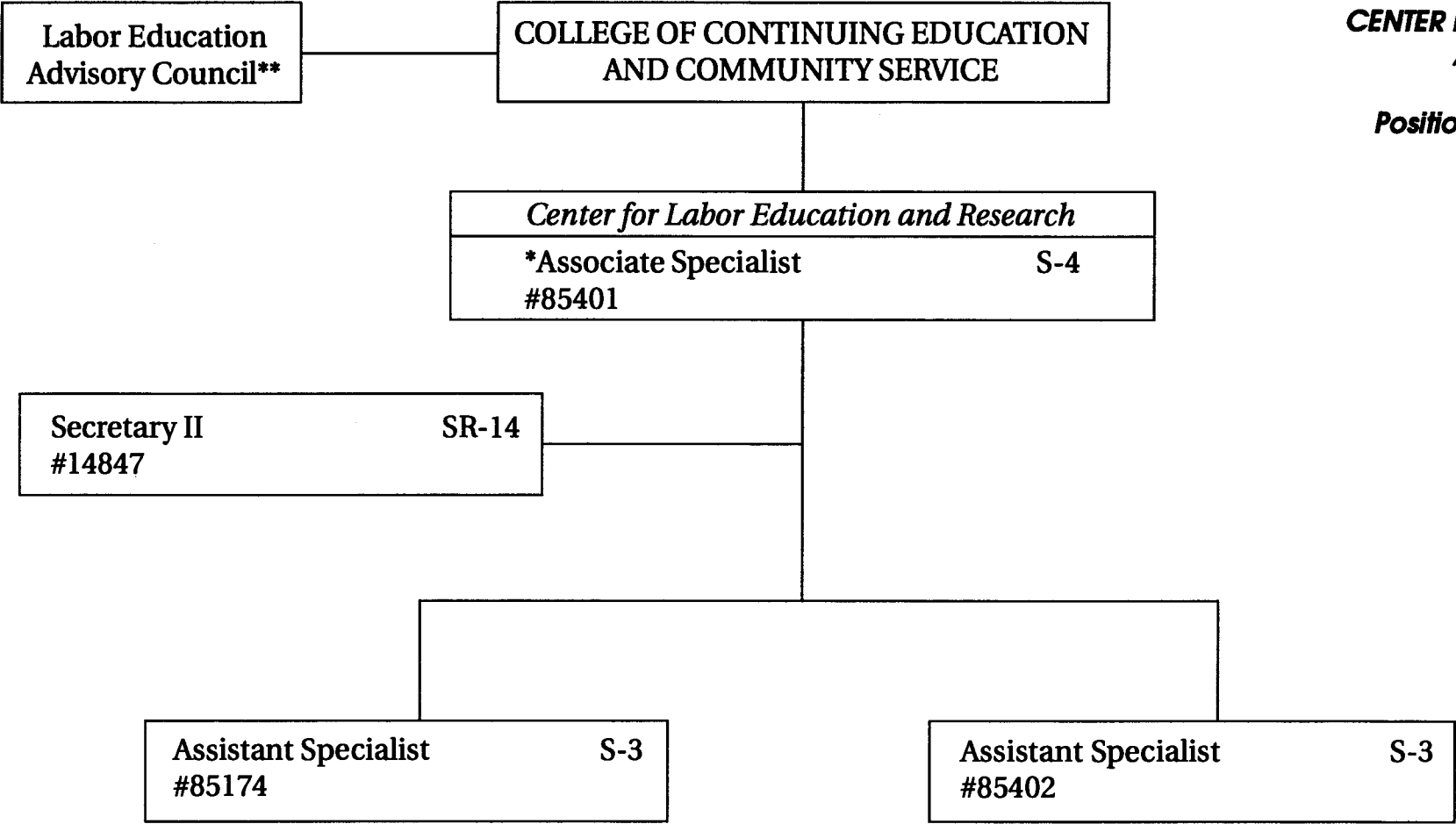


*Director

CHART UPDATED
DATE JUN 30 1994

UNIVERSITY OF HAWAI'I AT MĀNOA
COLLEGE OF CONTINUING EDUCATION
AND COMMUNITY SERVICES
**CENTER FOR LABOR EDUCATION
AND RESEARCH**

Position Organization Chart
Chart V

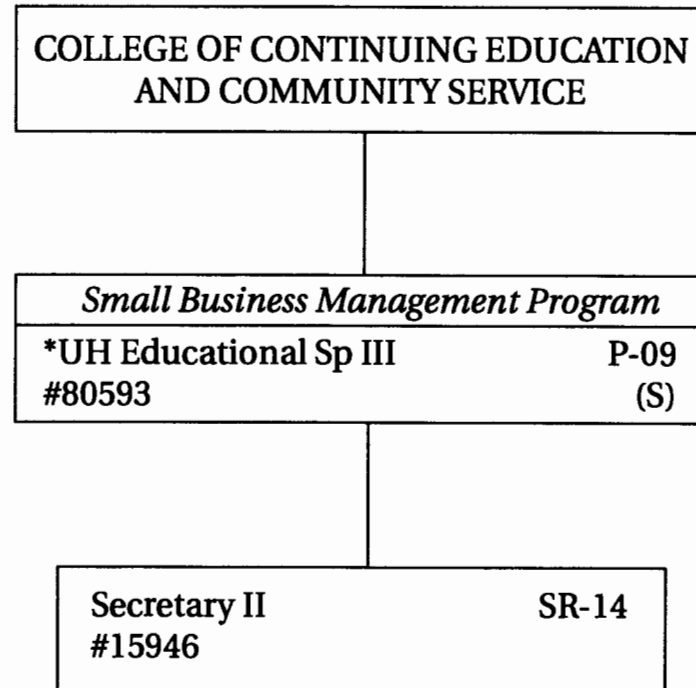


**Act 202, SLH 1976, Advisory Body to the Dean of CCECS

*Director

UNIVERSITY OF HAWAII AT MĀNOA
COLLEGE OF CONTINUING EDUCATION
AND COMMUNITY SERVICES
SMALL BUSINESS MANAGEMENT PROGRAM

Position Organization Chart
Chart VI

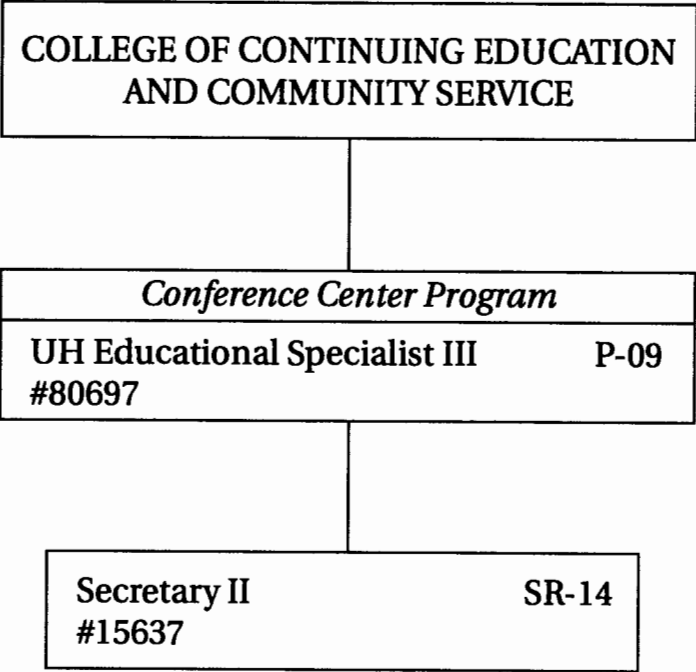


*Director

CHART UPDATED
DATE JUN 30 1994

UNIVERSITY OF HAWAI'I AT MĀNOA
COLLEGE OF CONTINUING EDUCATION
AND COMMUNITY SERVICES
THE CONFERENCE CENTER

Position Organization Chart
Chart VII



UNIVERSITY OF HAWAI'I AT MĀNOA
COLLEGE OF CONTINUING EDUCATION
AND COMMUNITY SERVICES
HAWAII ENGLISH LANGUAGE PROGRAM

Position Organization Chart
Chart VIII

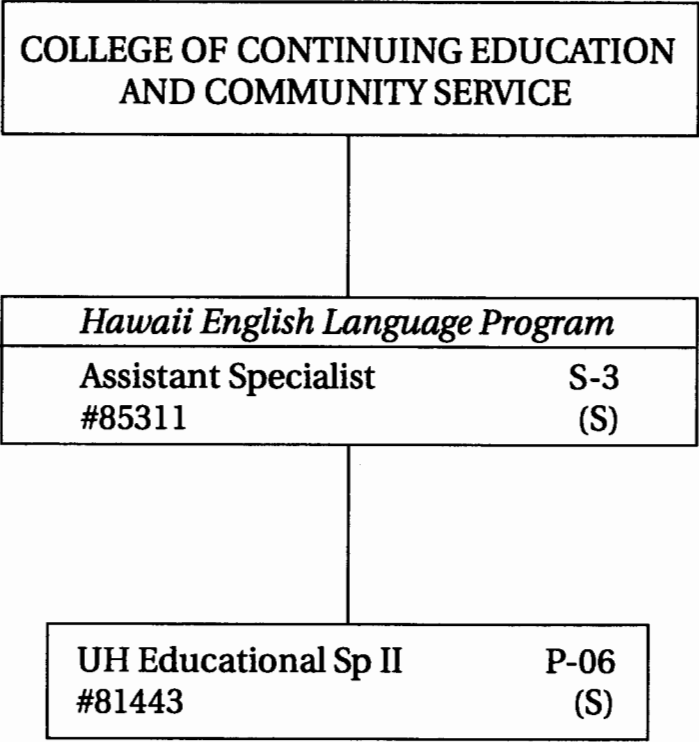
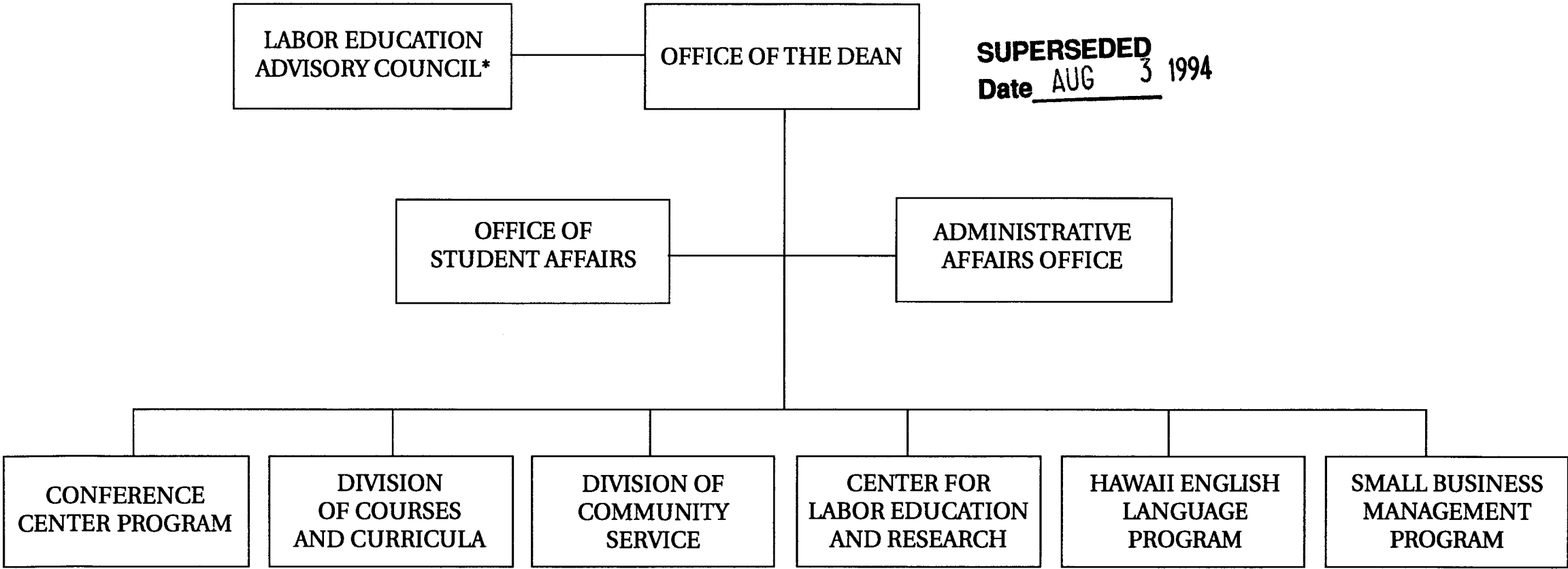


CHART UPDATED
DATE JUN 30 1994

UNIVERSITY OF HAWAII AT MANOA
COLLEGE OF CONTINUING EDUCATION
AND COMMUNITY SERVICES

Organization Chart
Chart I

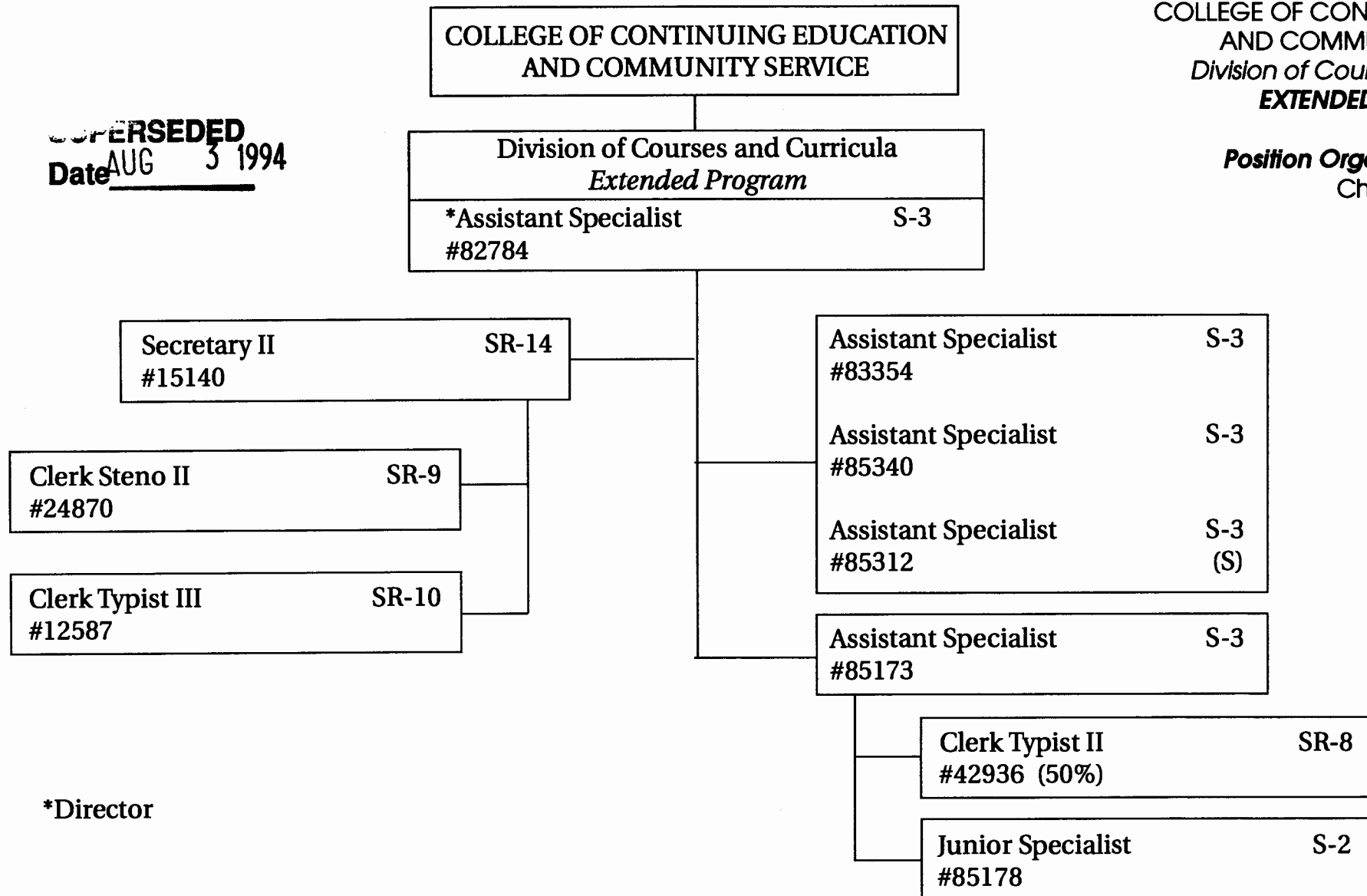


SUPERSEDED
Date AUG 3 1994

*Act 202, SLH 1976, Advisory Body to the Dean
for the Center for Labor Education and Research

CHART UPDATED
DATE JUN 30 1994

SUPERSEDED
Date AUG 3 1994



*Director

"Pending Establishment"
Pseudo No. 94532F Assistant Specialist

UNIVERSITY OF HAWAI'I AT MĀNOA
COLLEGE OF CONTINUING EDUCATION
AND COMMUNITY SERVICES
Division of Courses and Curricula
EXTENDED PROGRAM

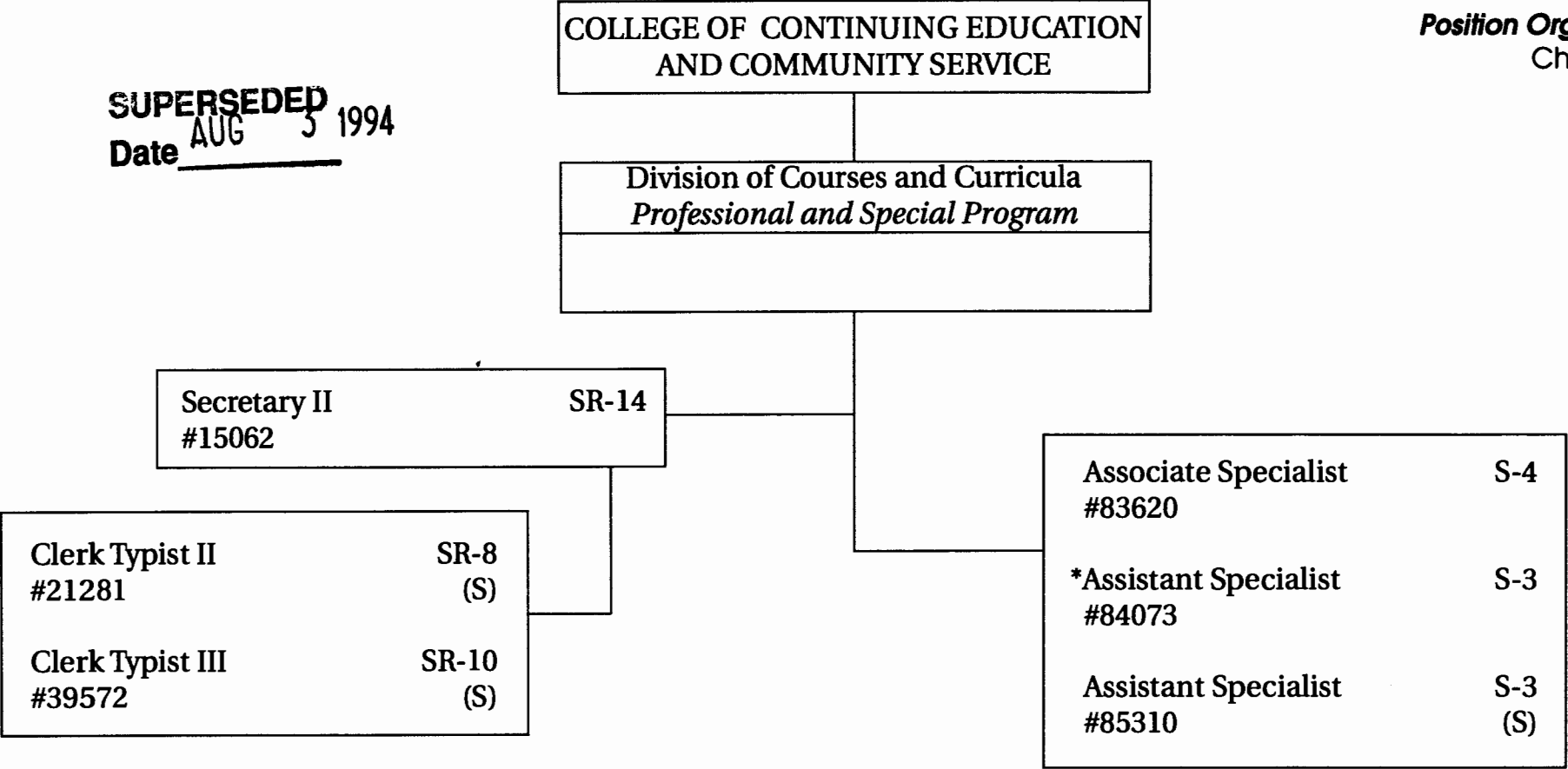
Position Organization Chart
Chart III

CHART UPDATED
DATE **JUN 30 1994**

UNIVERSITY OF HAWAII AT MANOA
COLLEGE OF CONTINUING EDUCATION
AND COMMUNITY SERVICES
Division of Courses and Curricula
PROFESSIONAL AND SPECIAL PROGRAM

Position Organization Chart
Chart III-A

SUPERSEDED
Date AUG 3 1994



“Pending Establishment”
Pseudo No. 94527F Assistant Specialist

* Serves as Acting Director.

CHART UPDATED
DATE JUN 30 1994