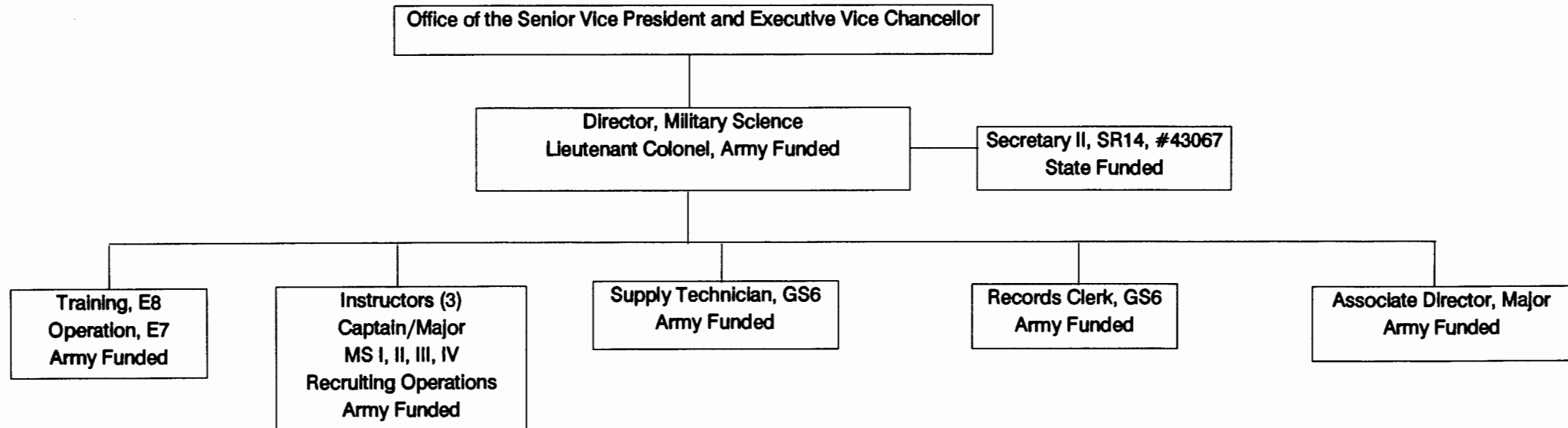


STATE OF HAWAII
 UNIVERSITY OF HAWAII AT MANOA
 SENIOR VICE PRESIDENT AND EXECUTIVE VICE CHANCELLOR
 MILITARY SCIENCE PROGRAM
 Position Organization Chart
 CHART VII

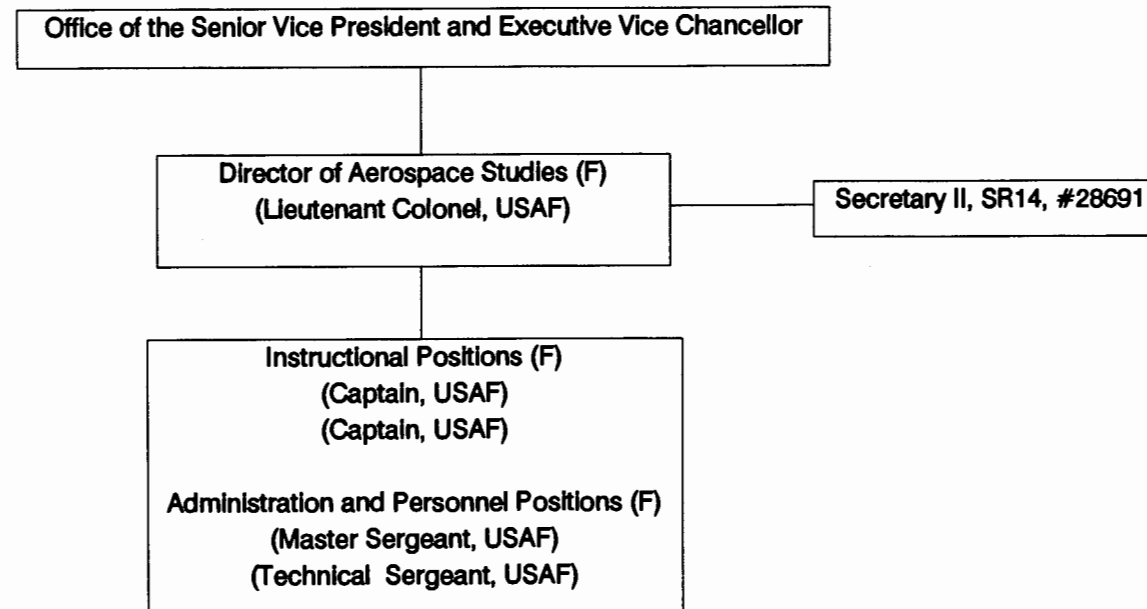


5 Officers
 2 Noncommissioned Officers
 2 Department of Army Civilians
1 State Employee
 10 Total Personnel

General Fund 1.0 FTE

CHART UPDATED
 DATE JUN 30 1994

STATE OF HAWAII
UNIVERSITY OF HAWAII AT MANOA
SENIOR VICE PRESIDENT AND EXECUTIVE VICE CHANCELLOR
AEROSPACE STUDIES PROGRAM
Position Organization Chart
CHART VIII



(F) Personnel funded by the United States Air Force

CHART UPDATED
JUN 30 1994
DATE _____

General Fund 1.0 FTE