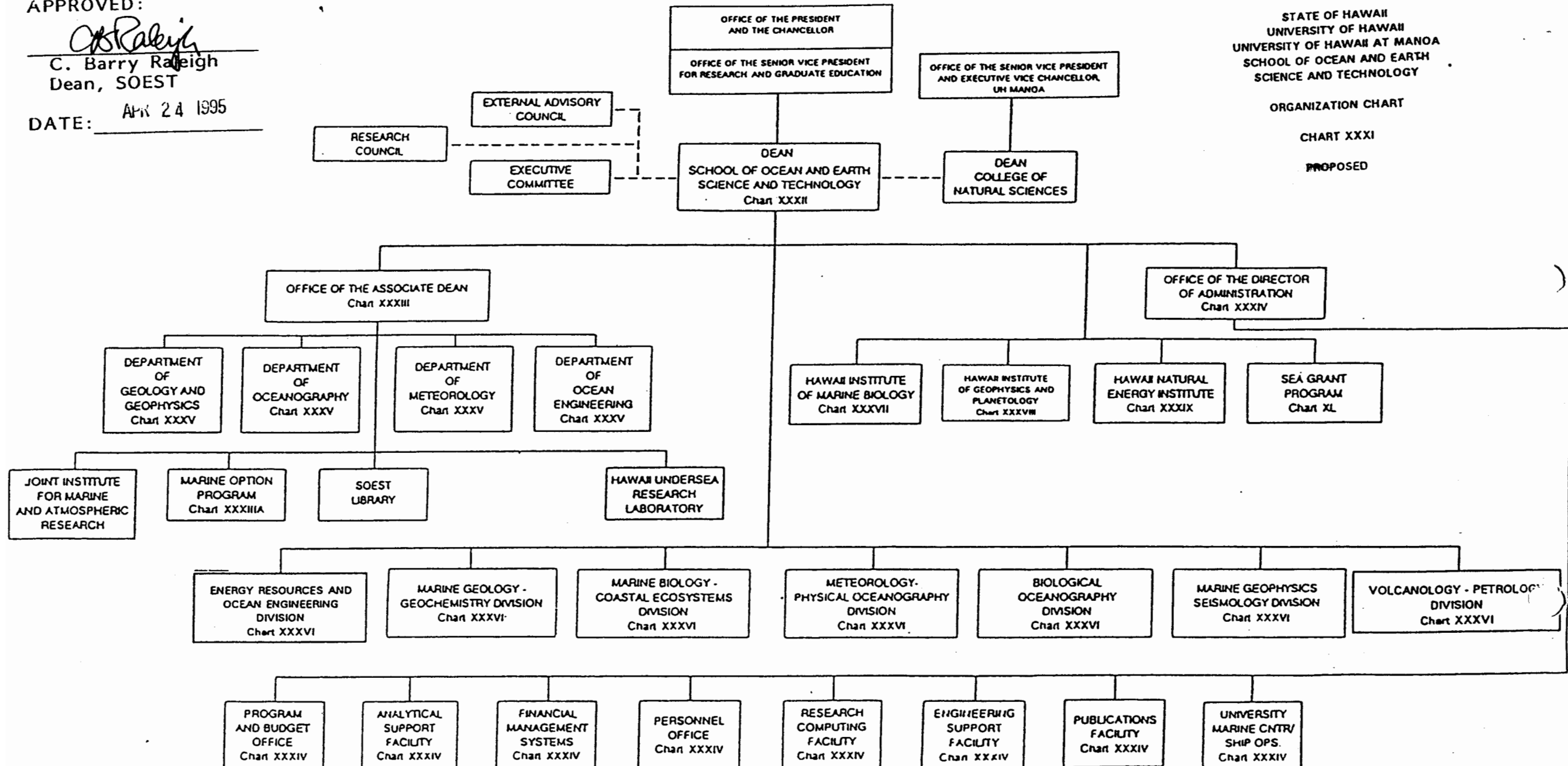


APPROVED:

C. Barry Raleigh
C. Barry Raleigh
Dean, SOEST

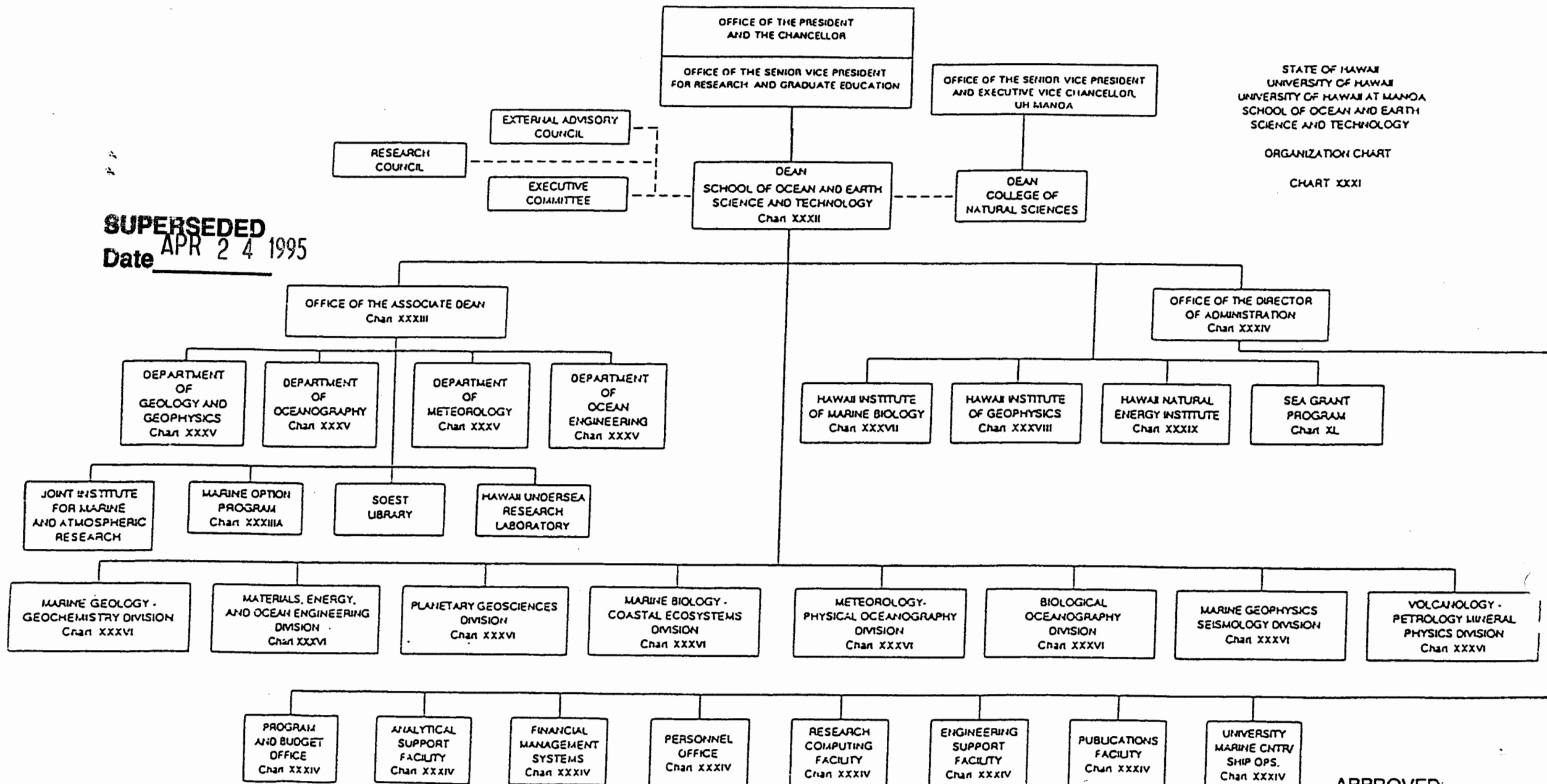
DATE: APR 24 1995



STATE OF HAWAII
UNIVERSITY OF HAWAII
UNIVERSITY OF HAWAII AT MANOA
SCHOOL OF OCEAN AND EARTH
SCIENCE AND TECHNOLOGY

ORGANIZATION CHART

CHART XXXI



SUPERSEDED
Date APR 24 1995

APPROVED

David J. Green
Name and Title

MAR 28 1995

SUPERSEDED
Date MAR 28 1995

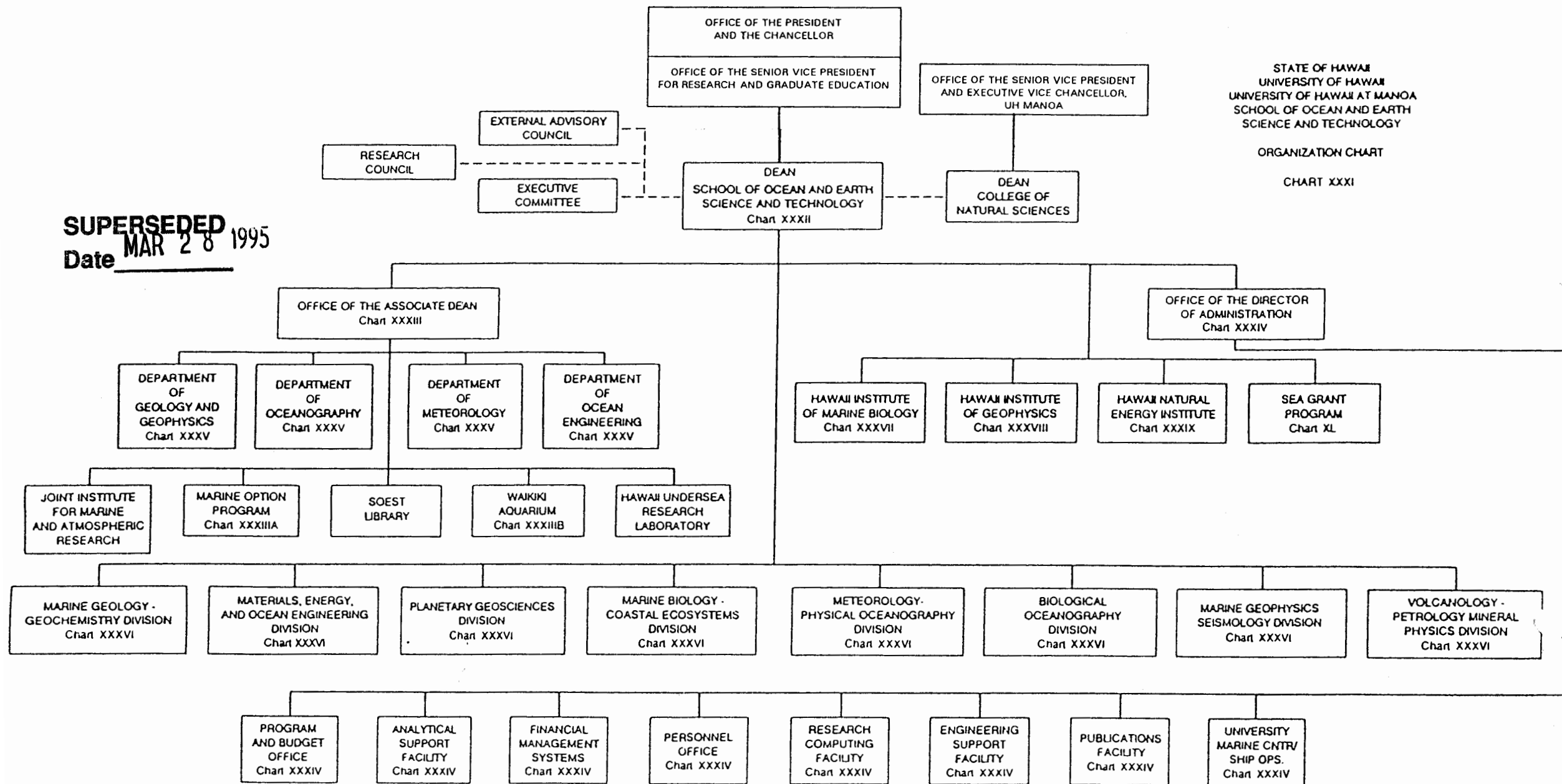


CHART UPDATED
DATE JUN 30 1994

STATE OF HAWAII
UNIVERSITY OF HAWAII
UNIVERSITY OF HAWAII AT MANOA
SCHOOL OF OCEAN AND EARTH
SCIENCE AND TECHNOLOGY

OFFICE OF THE DEAN
POSITION ORGANIZATION CHART

CHART XXXII

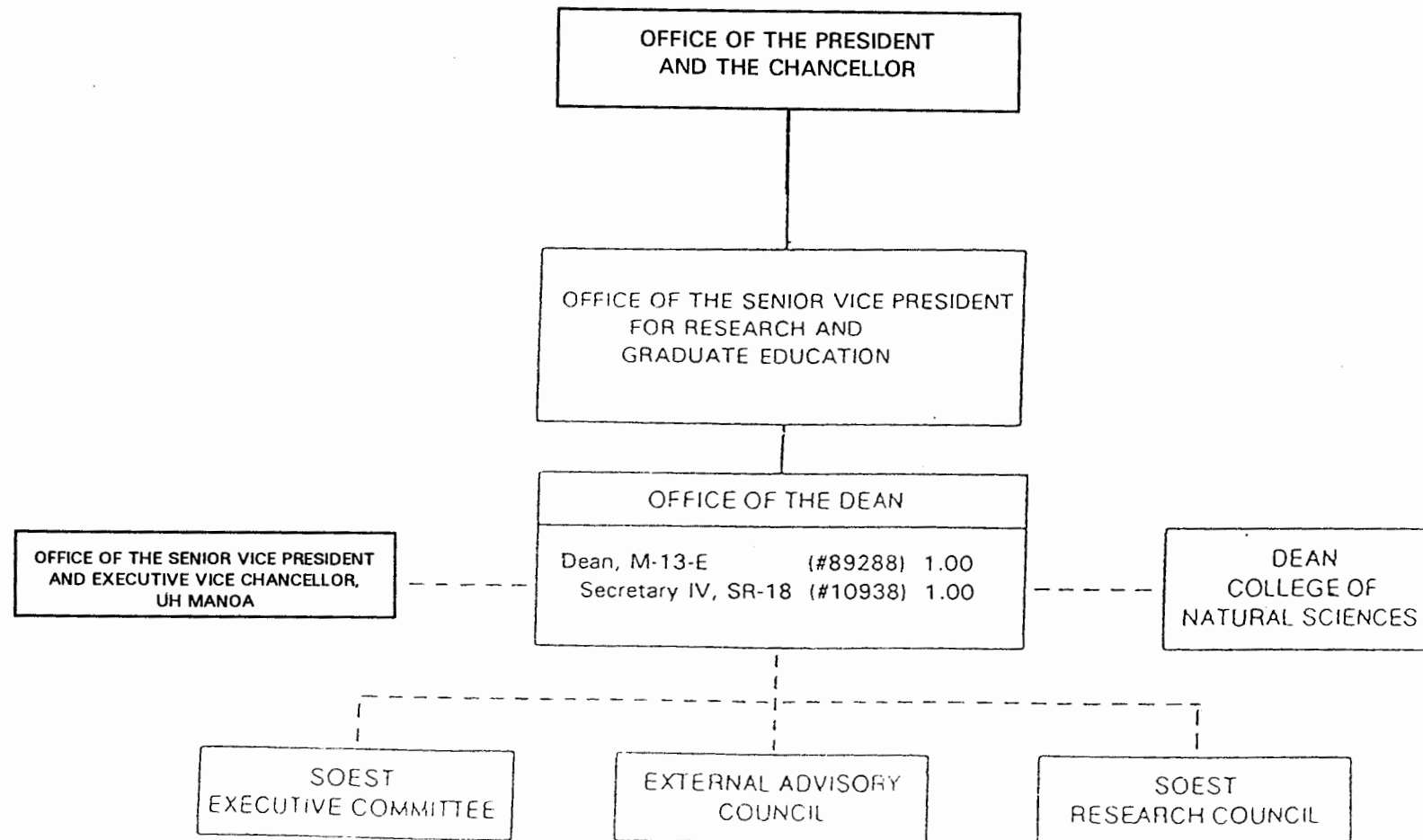


CHART UPDATED
DATE JUN 30 1994

STATE OF HAWAII
UNIVERSITY OF HAWAII
UNIVERSITY OF HAWAII AT MANOA
SCHOOL OF OCEAN AND EARTH
SCIENCE AND TECHNOLOGY

OFFICE OF THE ASSOCIATE DEAN
FOR ACADEMIC AFFAIRS
POSITION ORGANIZATION CHART

CHART XXXIII

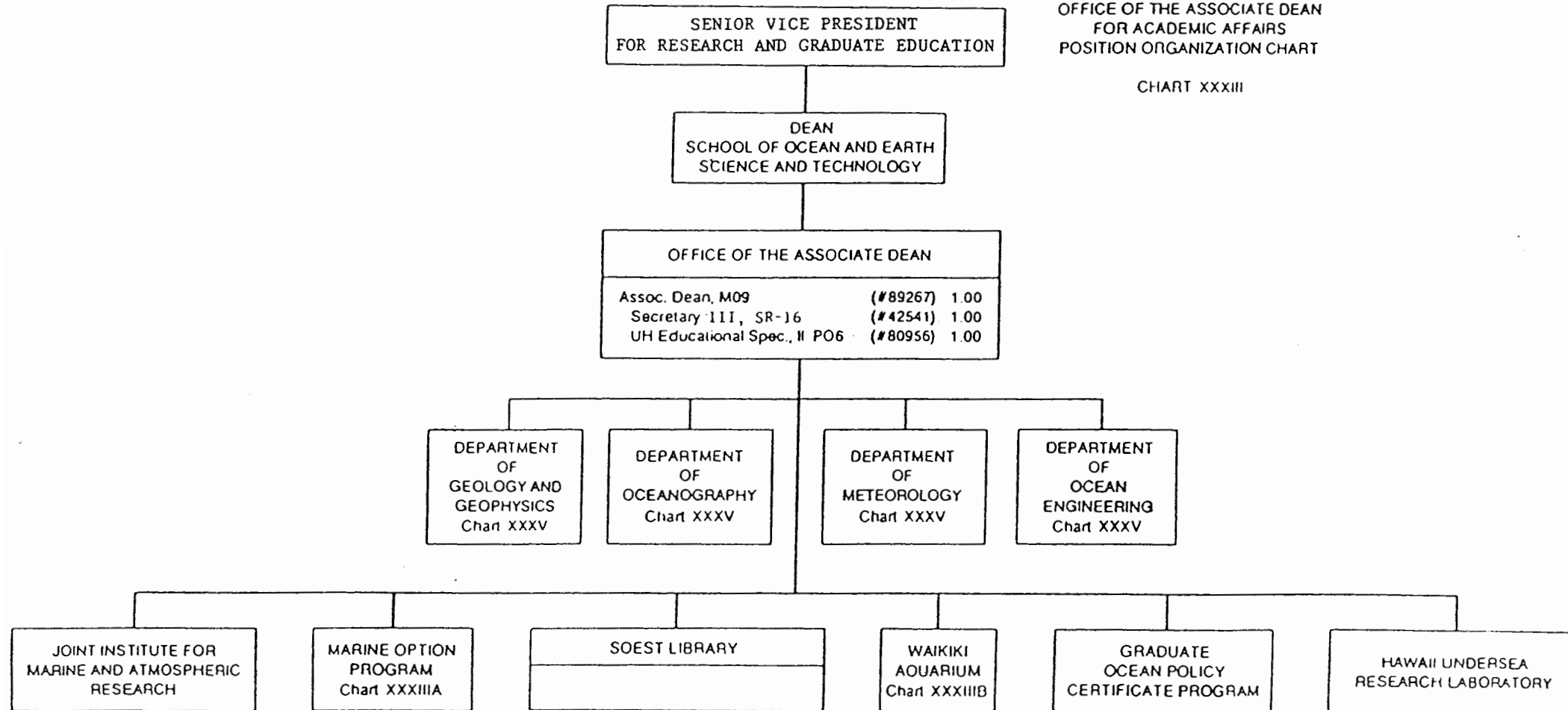
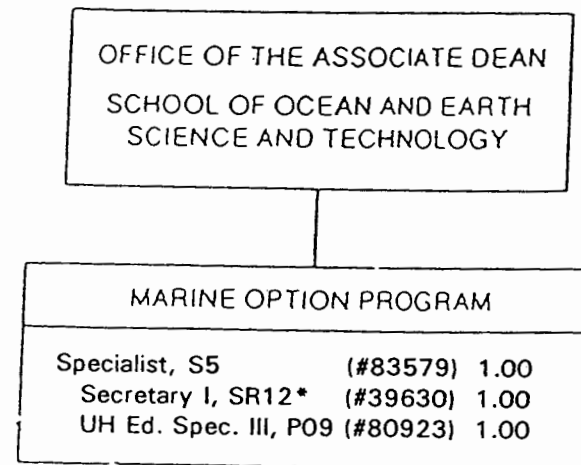


CHART UPDATED
DATE JUN 30 1994

STATE OF HAWAII
UNIVERSITY OF HAWAII
UNIVERSITY OF HAWAII AT MANOA
SCHOOL OF OCEAN AND EARTH
SCIENCE AND TECHNOLOGY

MARINE OPTION PROGRAM
POSITION ORGANIZATION CHART

CHART XXXIIIA



* To be reclassified

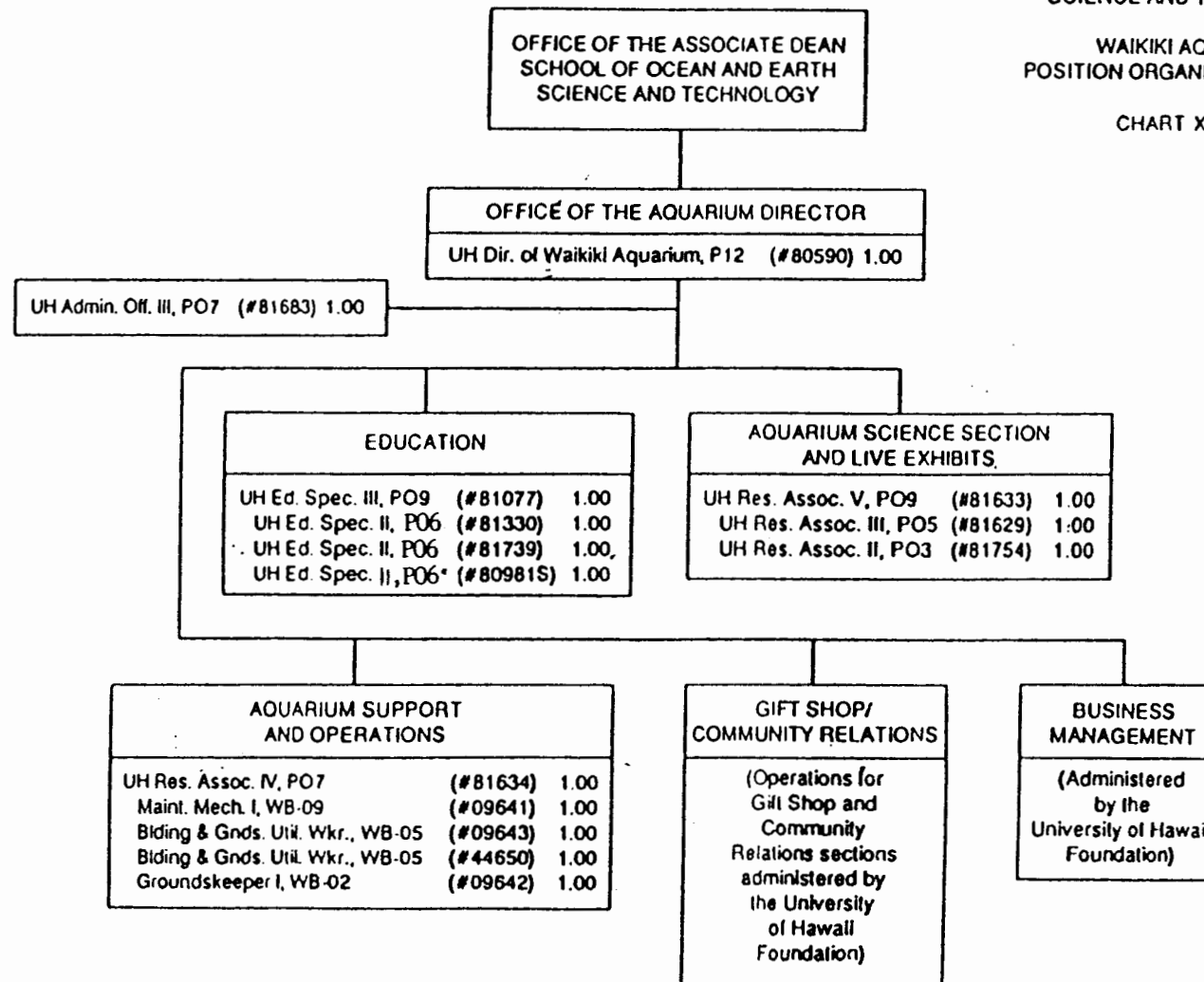
CHART UPDATED
DATE JUN 30 1994

SUPERSEDED
Date MAR 28 1995

STATE OF HAWAII
UNIVERSITY OF HAWAII
UNIVERSITY OF HAWAII AT MANOA
SCHOOL OF OCEAN AND EARTH
SCIENCE AND TECHNOLOGY

WAIKIKI AQUARIUM
POSITION ORGANIZATION CHART

CHART XXXIIIB



* Temporary

CHART UPDATED
DATE JUN 30 1994

STATE OF HAWAII
UNIVERSITY OF HAWAII
UNIVERSITY OF HAWAII AT MANOA
SCHOOL OF OCEAN AND EARTH
SCIENCE AND TECHNOLOGY

OFFICE OF THE DIRECTOR
OF ADMINISTRATION
POSITION ORGANIZATION CHART

CHART XXXIV

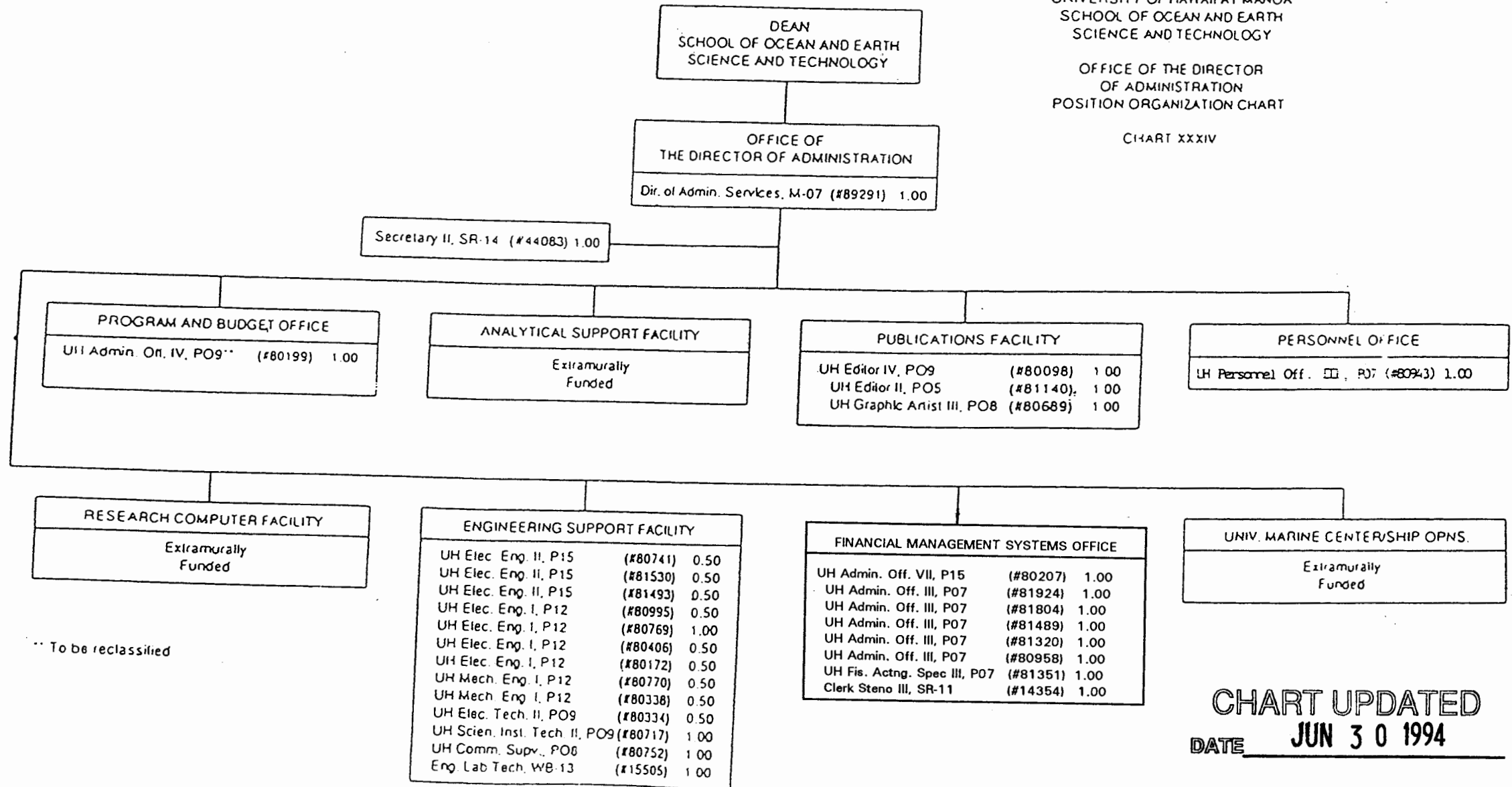


CHART UPDATED
DATE JUN 30 1994

APPROVED:

C. Barry Raleigh
C. Barry Raleigh
Dean, SOEST

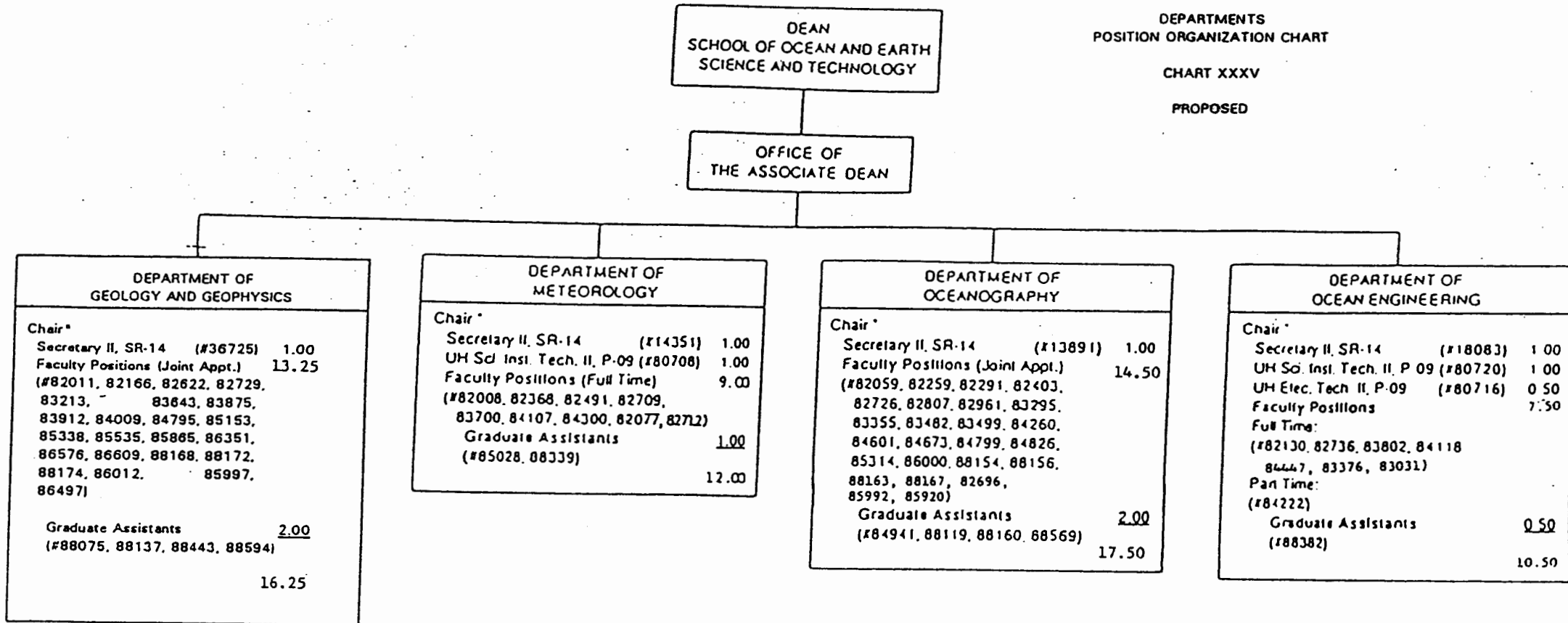
DATE: APR 24 1995

STATE OF HAWAII
UNIVERSITY OF HAWAII
UNIVERSITY OF HAWAII AT MANOA
SCHOOL OF OCEAN AND EARTH
SCIENCE AND TECHNOLOGY

DEPARTMENTS
POSITION ORGANIZATION CHART

CHART XXXV

PROPOSED

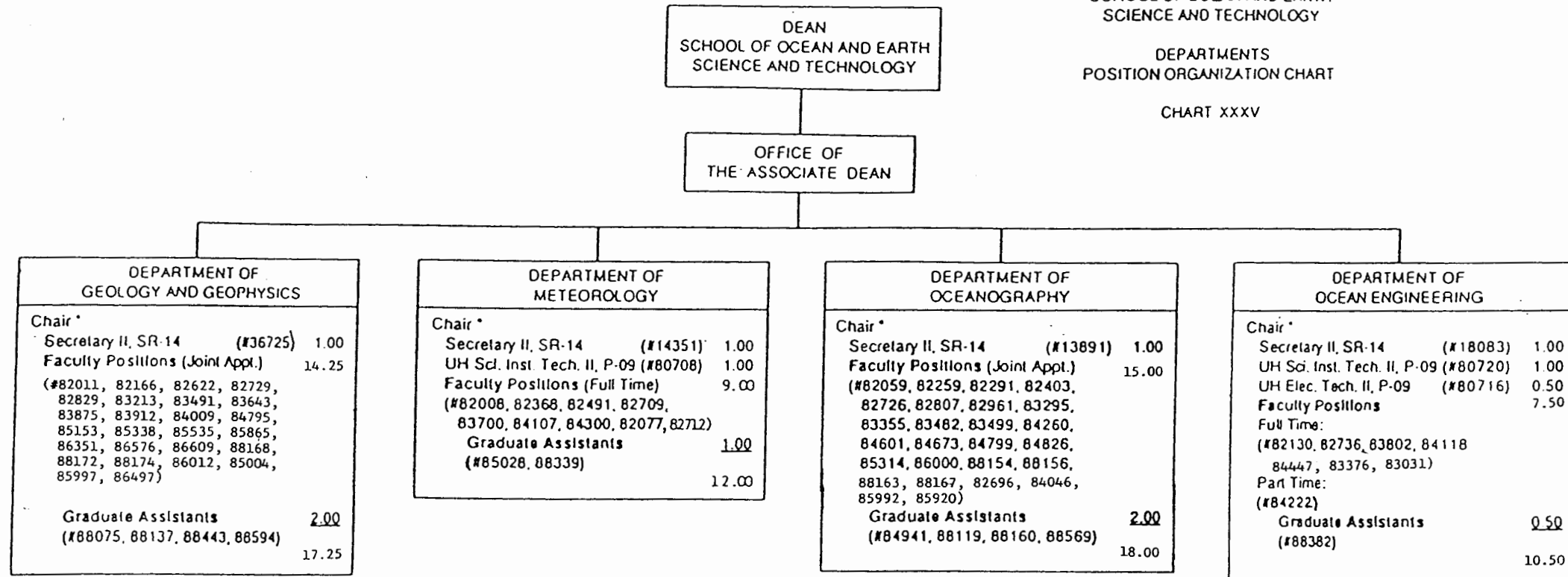


* Appointed from faculty positions

STATE OF HAWAII
UNIVERSITY OF HAWAII
UNIVERSITY OF HAWAII AT MANOA
SCHOOL OF OCEAN AND EARTH
SCIENCE AND TECHNOLOGY

DEPARTMENTS
POSITION ORGANIZATION CHART

CHART XXXV



* Appointed from faculty positions

SUPERSEDED
Date APR 24 1995

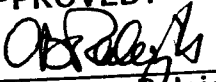
Approved:

C. Barry Raleigh
C. Barry Raleigh, Dean

06/30/94

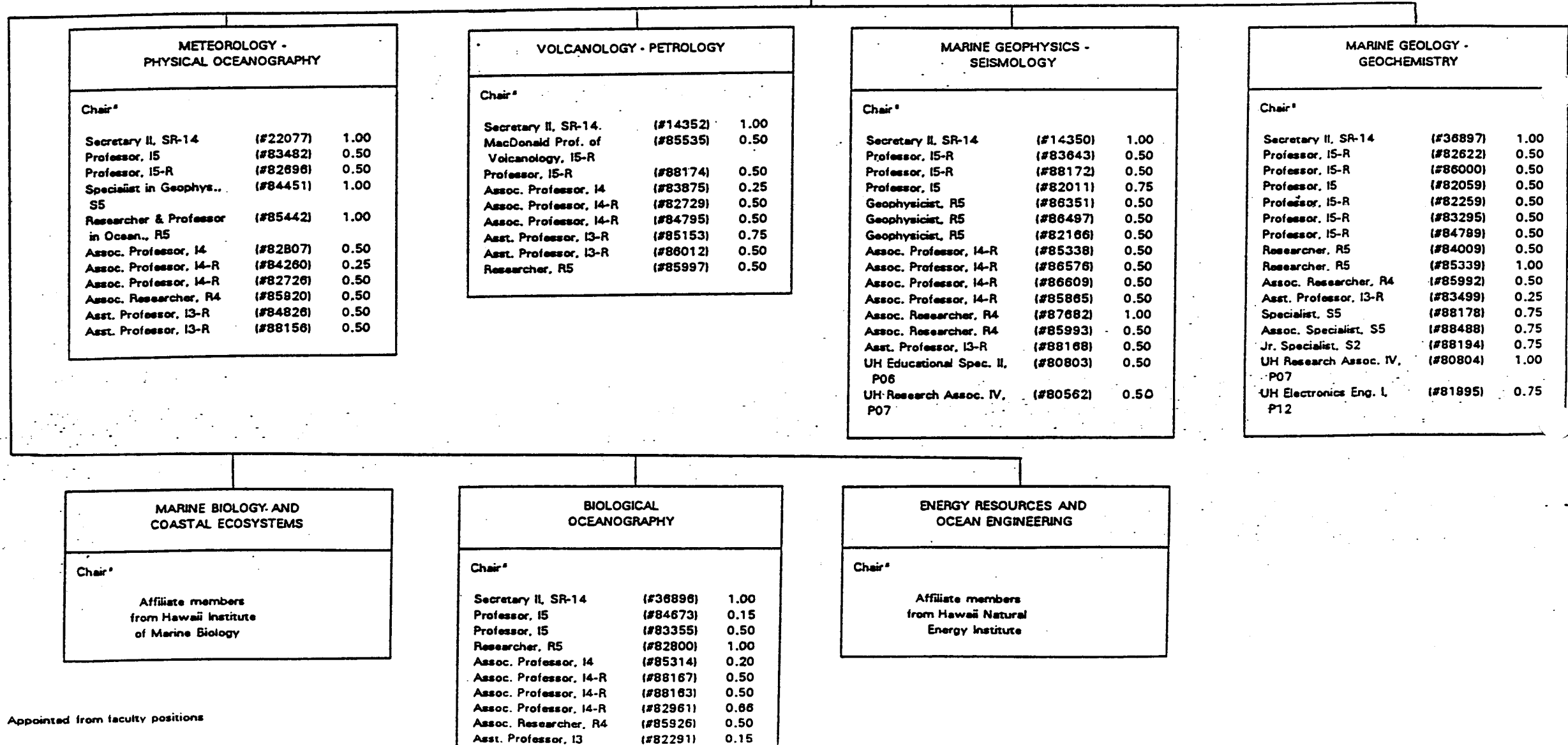
CHART UPDATED
DATE JUN 30 1994

APPROVED:


C. Barry Raleigh
Dean, SOEST

DATE: APR 24 1995

DEAN
SCHOOL OF OCEAN AND EARTH
SCIENCE AND TECHNOLOGY



* Appointed from faculty positions

SUPERSEDED
Date APR 24 1995

STATE OF HAWAII
UNIVERSITY OF HAWAII
UNIVERSITY OF HAWAII AT MANOA
SCHOOL OF OCEAN AND EARTH
SCIENCE AND TECHNOLOGY

RESEARCH DIVISIONS
POSITION ORGANIZATION CHART

CHART XXXVI

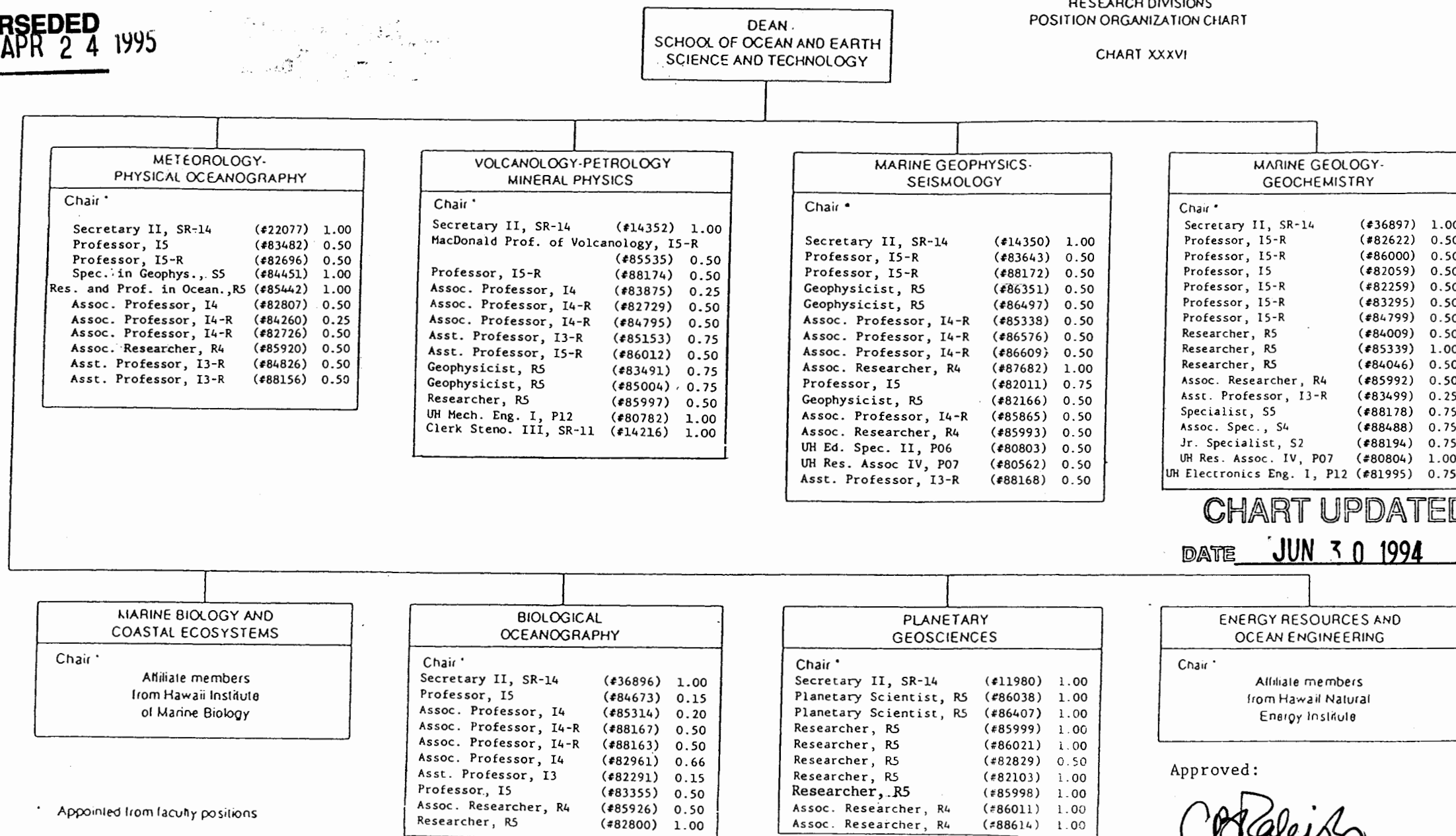


CHART UPDATED

DATE JUN 30 1994

Approved:


C. Barry Raleigh, Dean

06/30/94

* Appointed from faculty positions

STATE OF HAWAII
UNIVERSITY OF HAWAII
UNIVERSITY OF HAWAII AT MANOA
SCHOOL OF OCEAN AND EARTH
SCIENCE AND TECHNOLOGY

HAWAII INSTITUTE OF MARINE BIOLOGY
PROPOSED ORGANIZATION CHART

CHART XXXVII

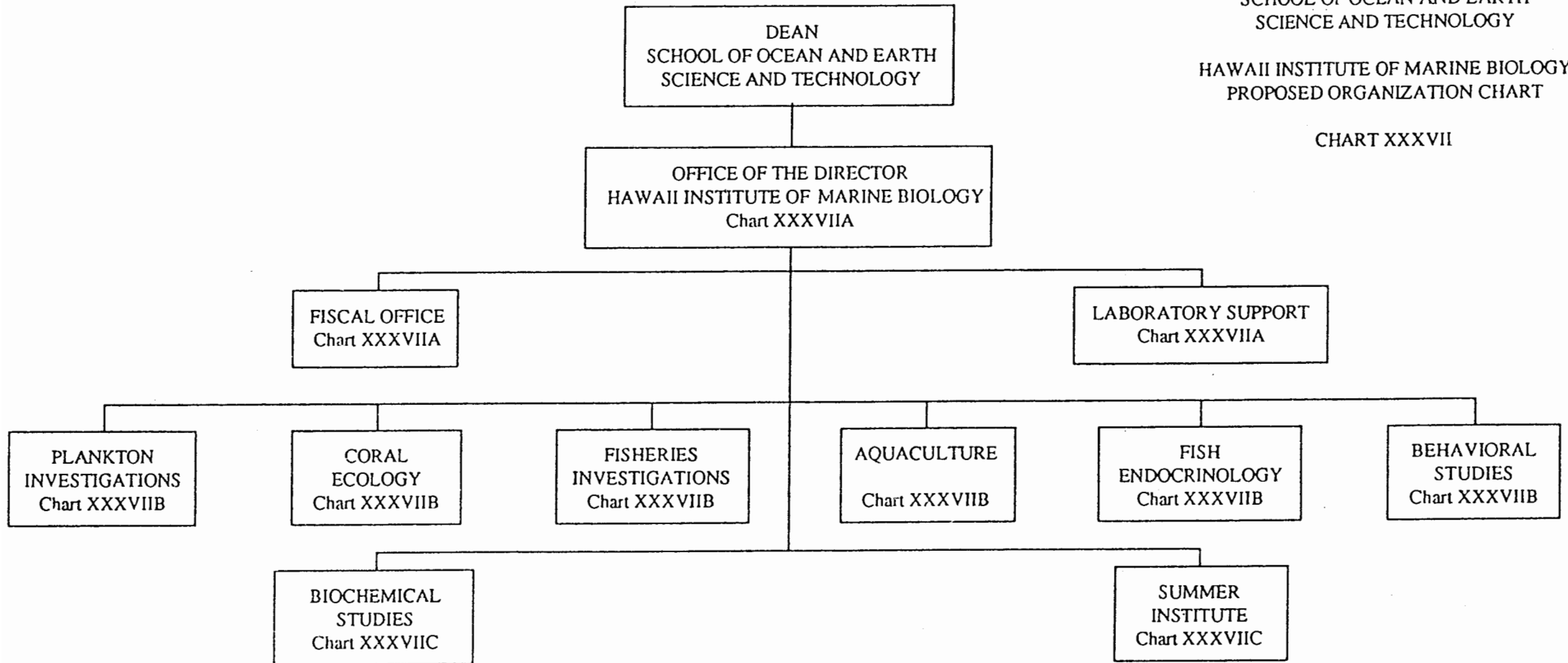


CHART UPDATED
DATE JUN 30 1994

STATE OF HAWAII
UNIVERSITY OF HAWAII
UNIVERSITY OF HAWAII AT MANOA
SCHOOL OF OCEAN AND EARTH
SCIENCE AND TECHNOLOGY

HAWAII INSTITUTE OF MARINE BIOLOGY
POSITION ORGANIZATION CHART

CHART XXXVIIA

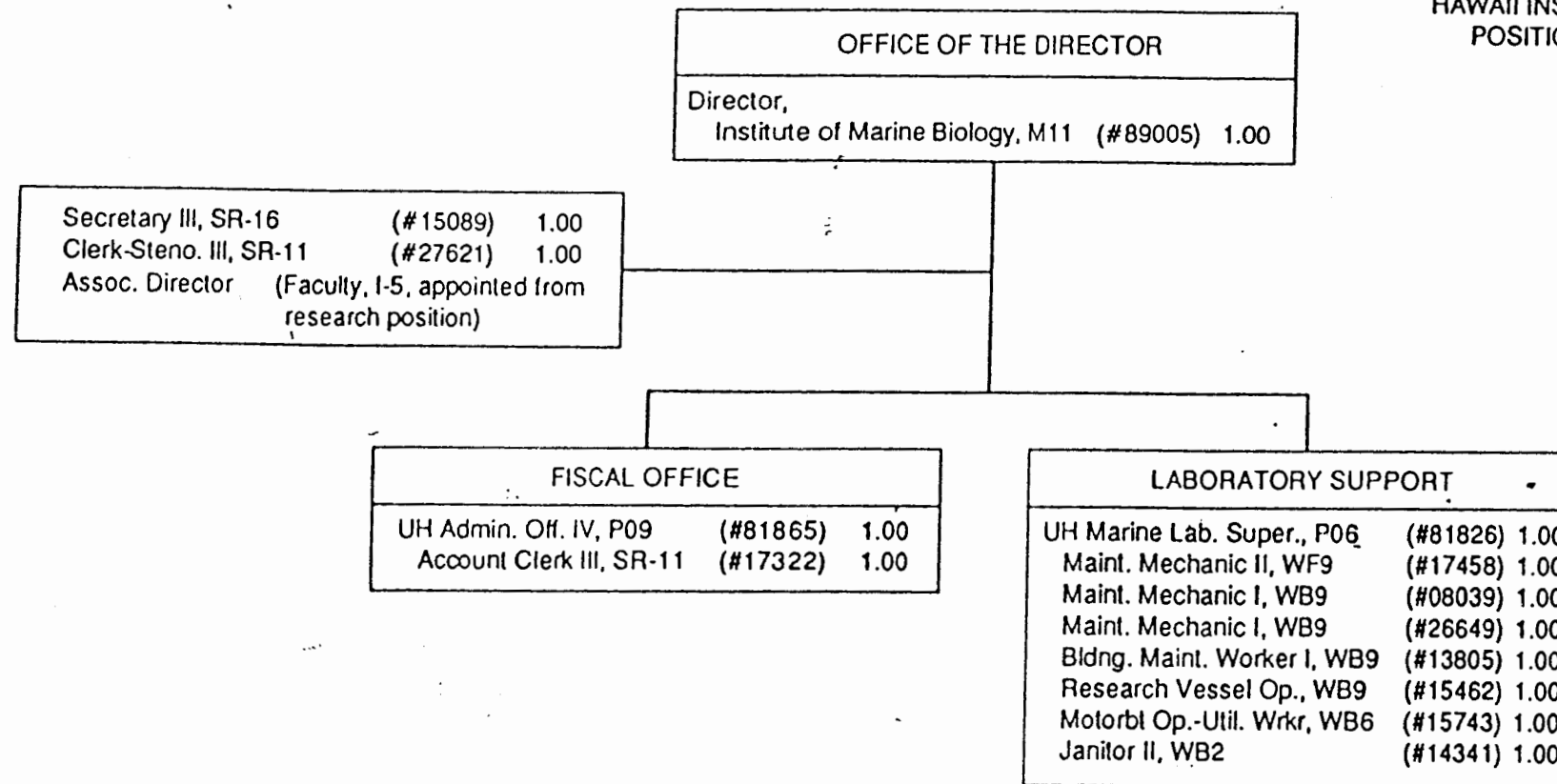


CHART UPDATED
DATE JUN 30 1994

STATE OF HAWAII
UNIVERSITY OF HAWAII
UNIVERSITY OF HAWAII AT MANOA
SCHOOL OF OCEAN AND EARTH
SCIENCE AND TECHNOLOGY

HAWAII INSTITUTE OF MARINE BIOLOGY
POSITION ORGANIZATION CHART

CHART XXXVIII B

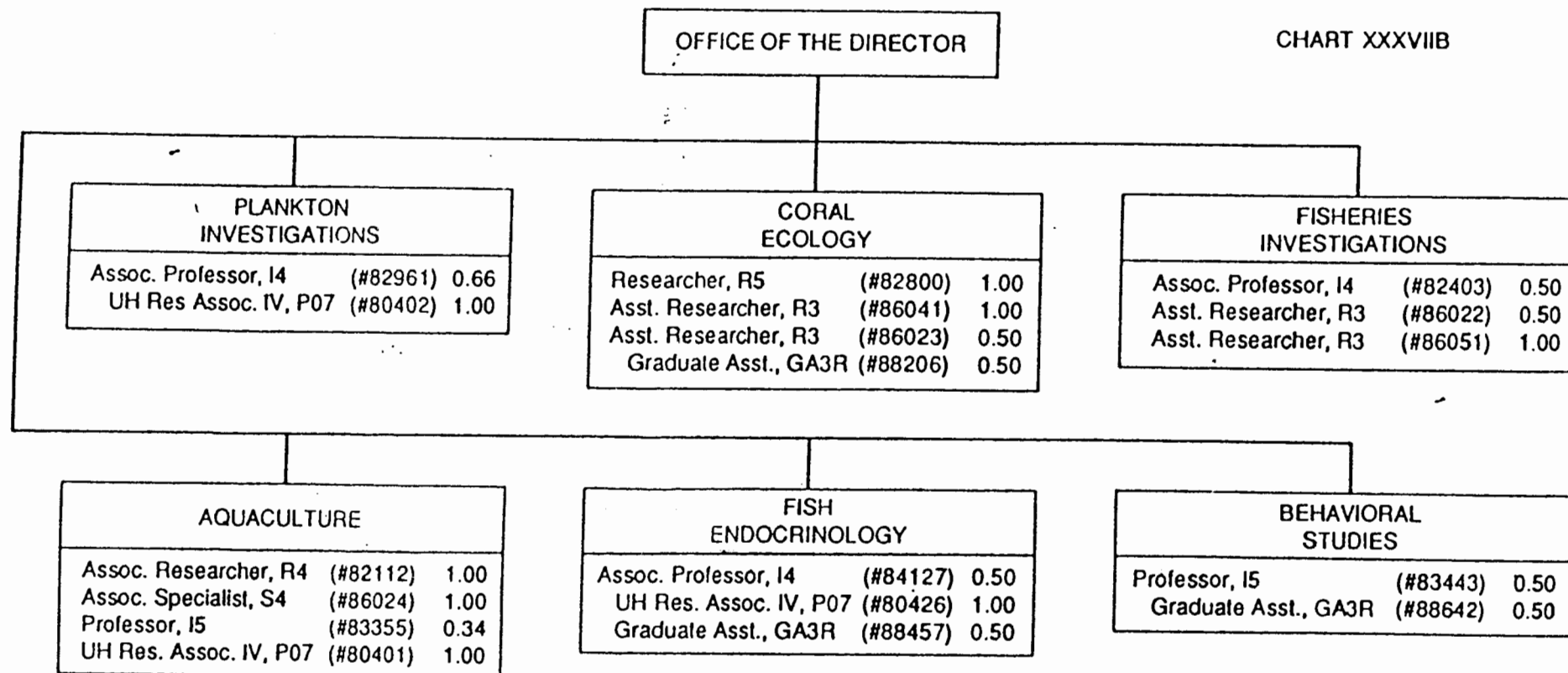


CHART UPDATED
DATE JUN 30 1994

STATE OF HAWAII
UNIVERSITY OF HAWAII
UNIVERSITY OF HAWAII AT MANOA
SCHOOL OF OCEAN AND EARTH
SCIENCE AND TECHNOLOGY

HAWAII INSTITUTE OF MARINE BIOLOGY
PROPOSED POSITION ORGANIZATION
CHART

CHART XXXVIIC

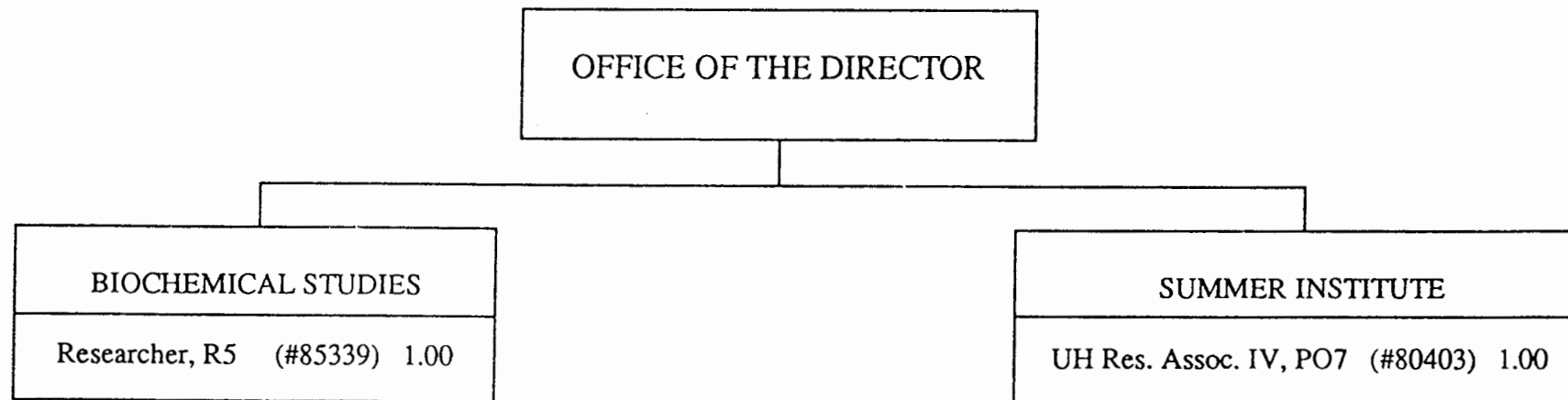



CHART UPDATED
DATE JUN 30 1994

APPROVED:


C. Barry Raleigh
Dean, SOEST

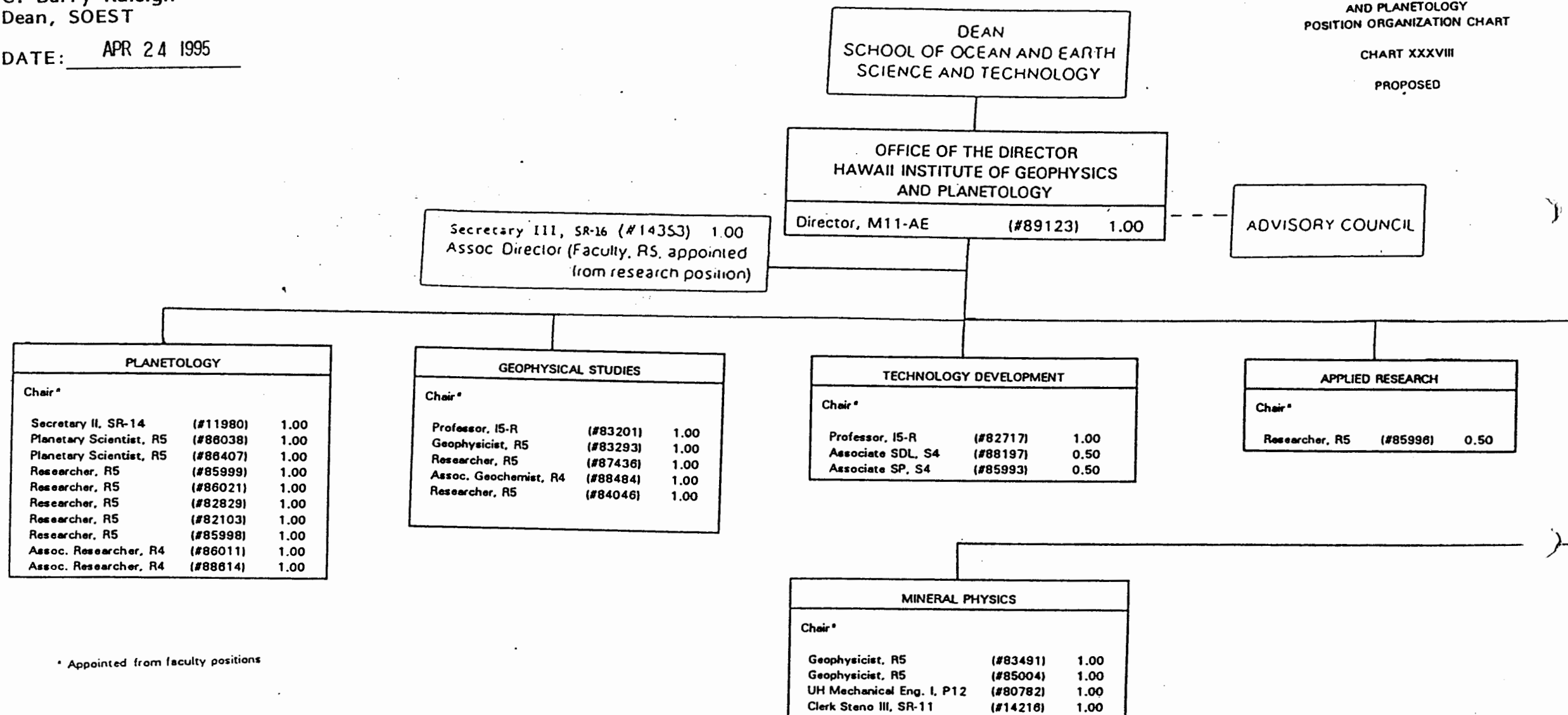
DATE: APR 24 1995

STATE OF HAWAII
UNIVERSITY OF HAWAII
UNIVERSITY OF HAWAII AT MANOA
SCHOOL OF OCEAN AND EARTH
SCIENCE AND TECHNOLOGY

HAWAII INSTITUTE OF GEOPHYSICS
AND PLANETOLOGY
POSITION ORGANIZATION CHART

CHART XXXVIII

PROPOSED



STATE OF HAWAII
UNIVERSITY OF HAWAII
UNIVERSITY OF HAWAII AT MANOA
SCHOOL OF OCEAN AND EARTH
SCIENCE AND TECHNOLOGY

HAWAII INSTITUTE OF GEOPHYSICS
POSITION ORGANIZATION CHART

CHART XXXVIII

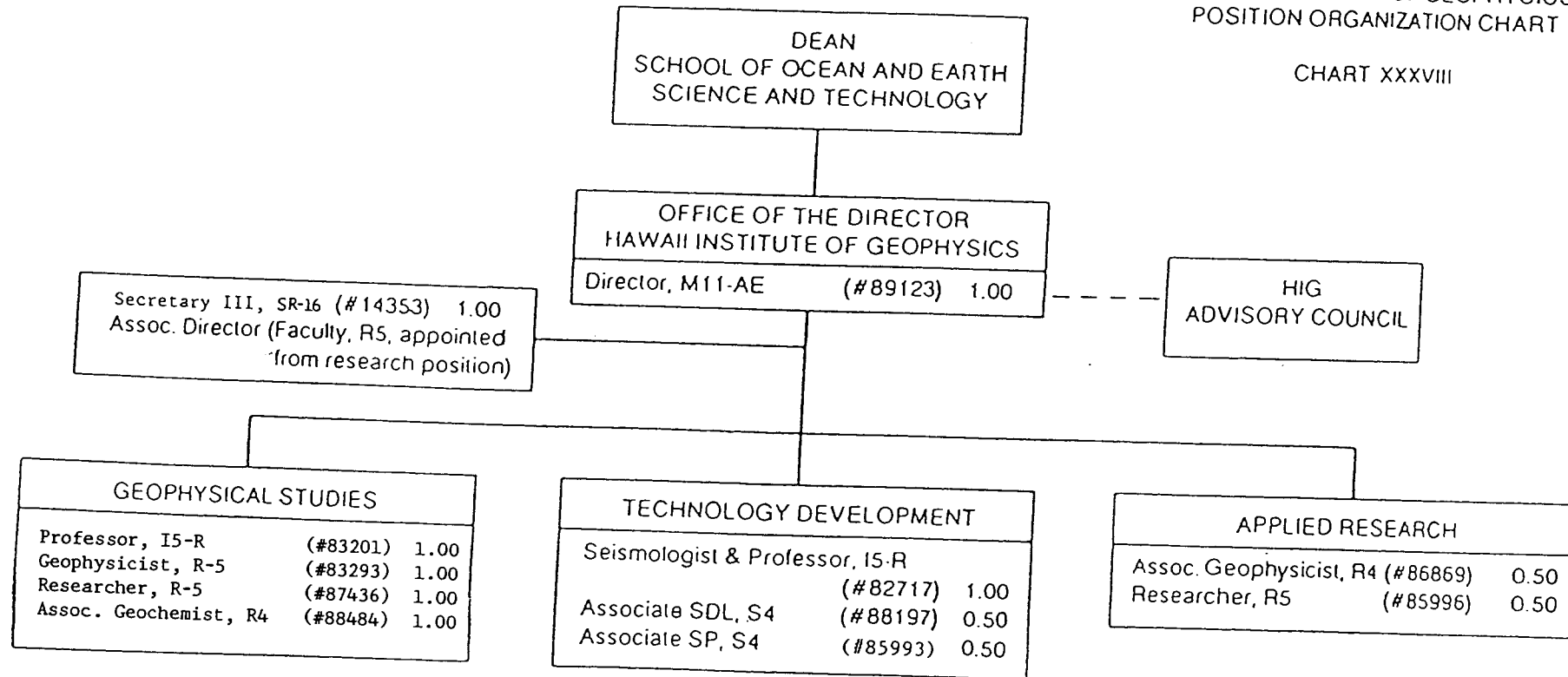


CHART UPDATED
DATE JUN 30 1994

SUPERSEDED
Date APR 24 1995

Approved:

C. Barry Raleigh
C. Barry Raleigh, Dean

06/30/94

STATE OF HAWAII
UNIVERSITY OF HAWAII
UNIVERSITY OF HAWAII AT MANOA
SCHOOL OF OCEAN AND EARTH
SCIENCE AND TECHNOLOGY

HAWAII NATURAL ENERGY INSTITUTE
POSITION ORGANIZATION CHART

CHART XXXIX

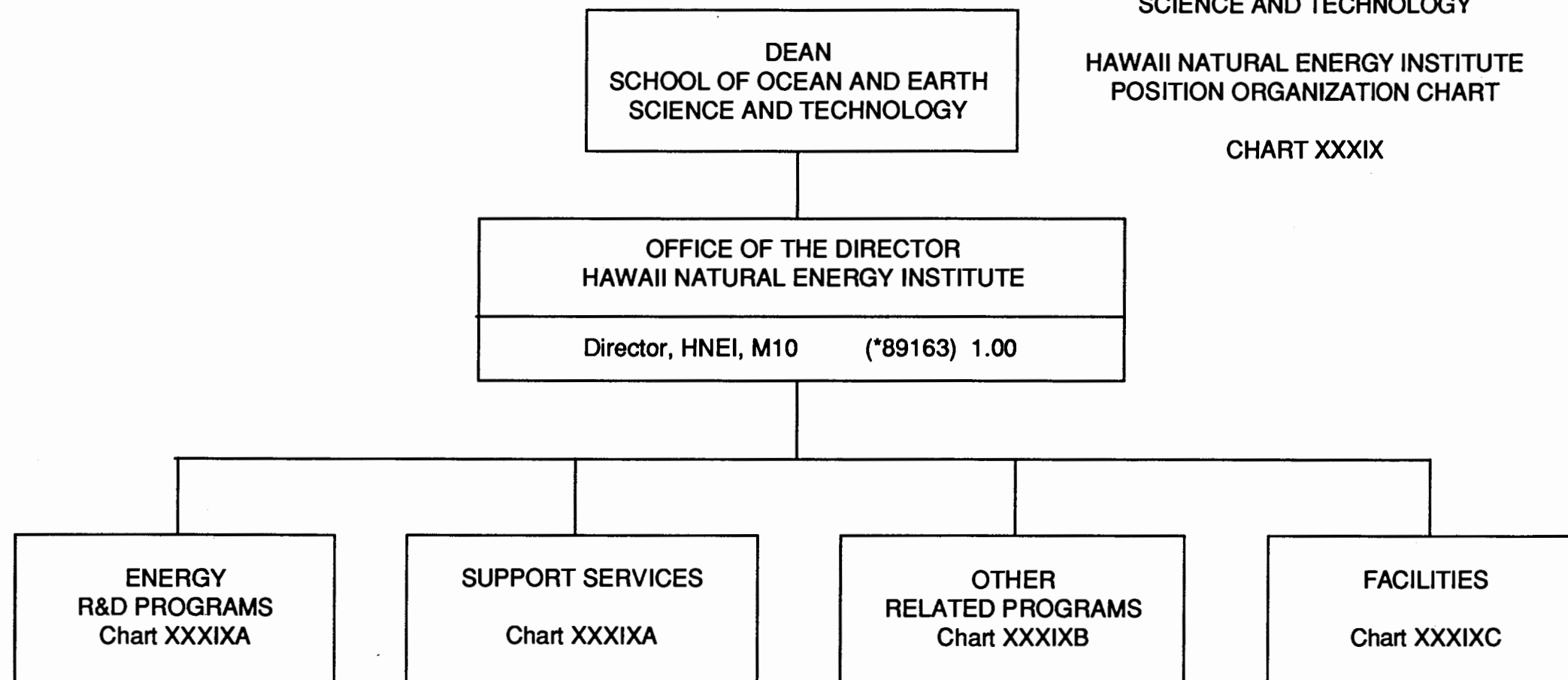


CHART UPDATED
DATE JUN 30 1994

STATE OF HAWAII
UNIVERSITY OF HAWAII
UNIVERSITY OF HAWAII AT MANOA
SCHOOL OF OCEAN AND EARTH
SCIENCE AND TECHNOLOGY

HAWAII NATURAL ENERGY INSTITUTE
POSITION ORGANIZATION CHART

CHART XXXIXA

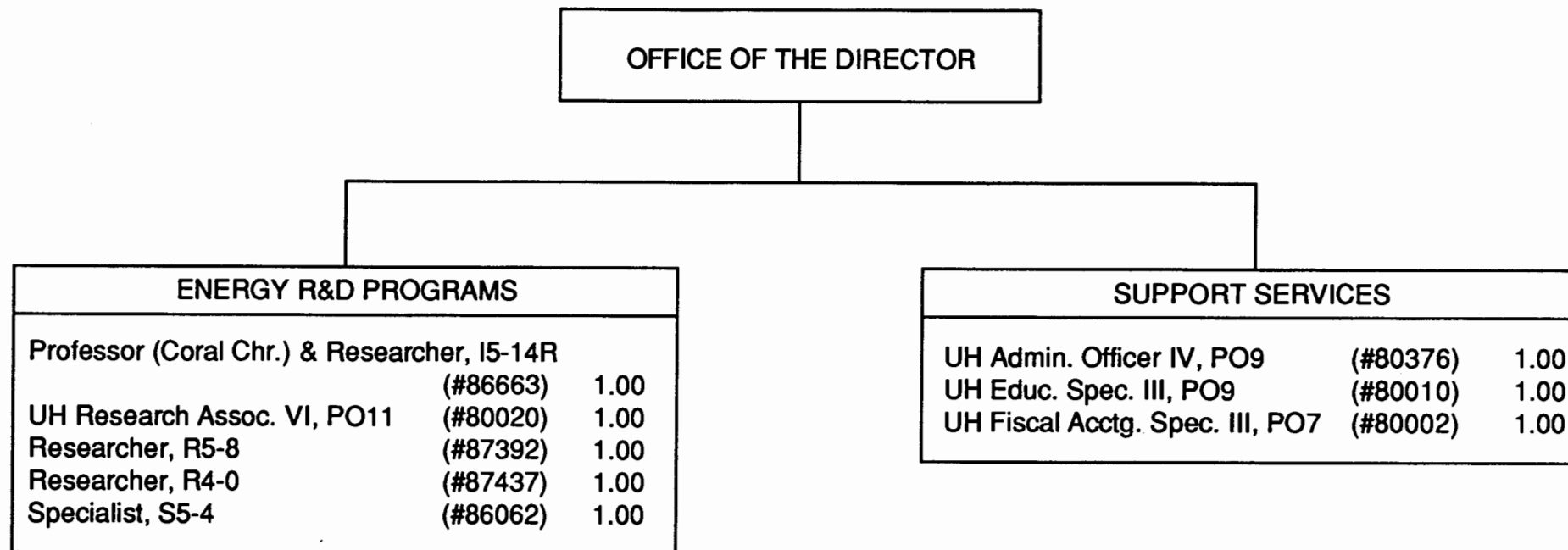


CHART UPDATED
DATE JUN 30 1994

STATE OF HAWAII
UNIVERSITY OF HAWAII
UNIVERSITY OF HAWAII AT MANOA
SCHOOL OF OCEAN AND EARTH
SCIENCE AND TECHNOLOGY

HAWAII NATURAL ENERGY INSTITUTE
POSITION ORGANIZATION CHART

CHART XXXIXB

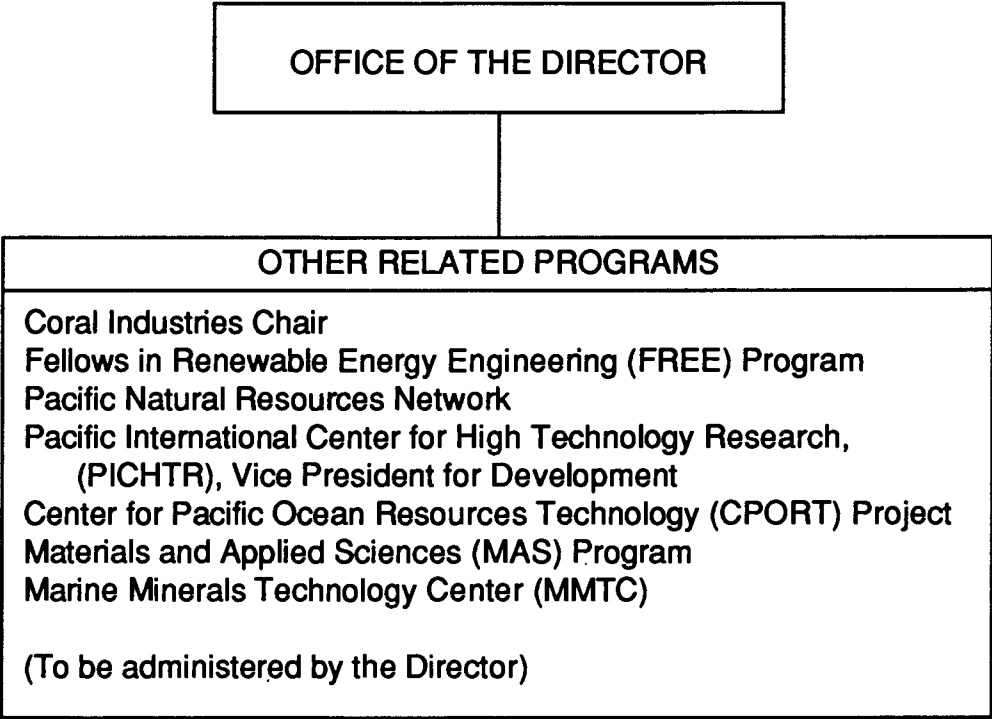
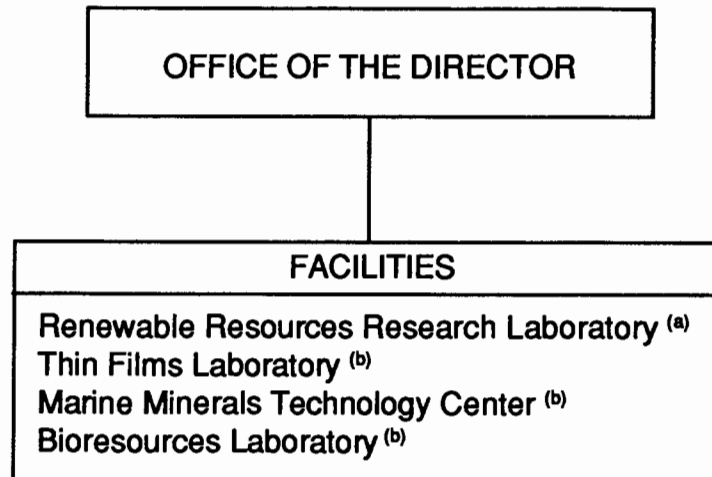


CHART UPDATED
DATE JUN 30 1994

STATE OF HAWAII
UNIVERSITY OF HAWAII
UNIVERSITY OF HAWAII AT MANOA
SCHOOL OF OCEAN AND EARTH
SCIENCE AND TECHNOLOGY

HAWAII NATURAL ENERGY INSTITUTE
POSITION ORGANIZATION CHART

CHART XXXIXC



(a) administered by Coral Chair

(b) administration and research supervisory role

CHART UPDATED
DATE JUN 30 1994

STATE OF HAWAII
UNIVERSITY OF HAWAII
UNIVERSITY OF HAWAII AT MANOA
SCHOOL OF OCEAN AND EARTH
SCIENCE AND TECHNOLOGY

SEA GRANT COLLEGE PROGRAM
ORGANIZATION CHART

CHART XL

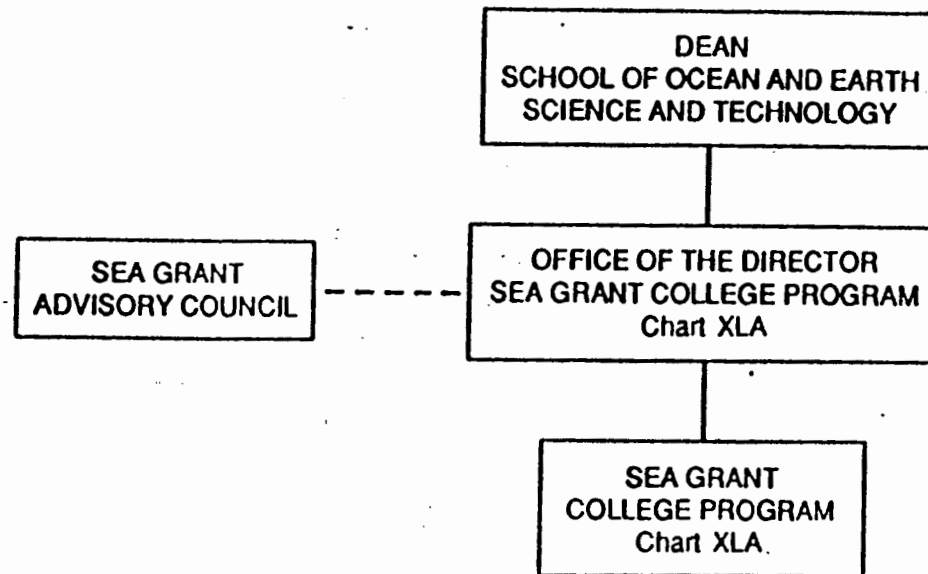


CHART UPDATED
DATE JUN 30 1994

STATE OF HAWAII
UNIVERSITY OF HAWAII
UNIVERSITY OF HAWAII AT MANOA
SCHOOL OF OCEAN AND EARTH
SCIENCE AND TECHNOLOGY

SEA GRANT COLLEGE PROGRAM
POSITION ORGANIZATION CHART

CHART XLA

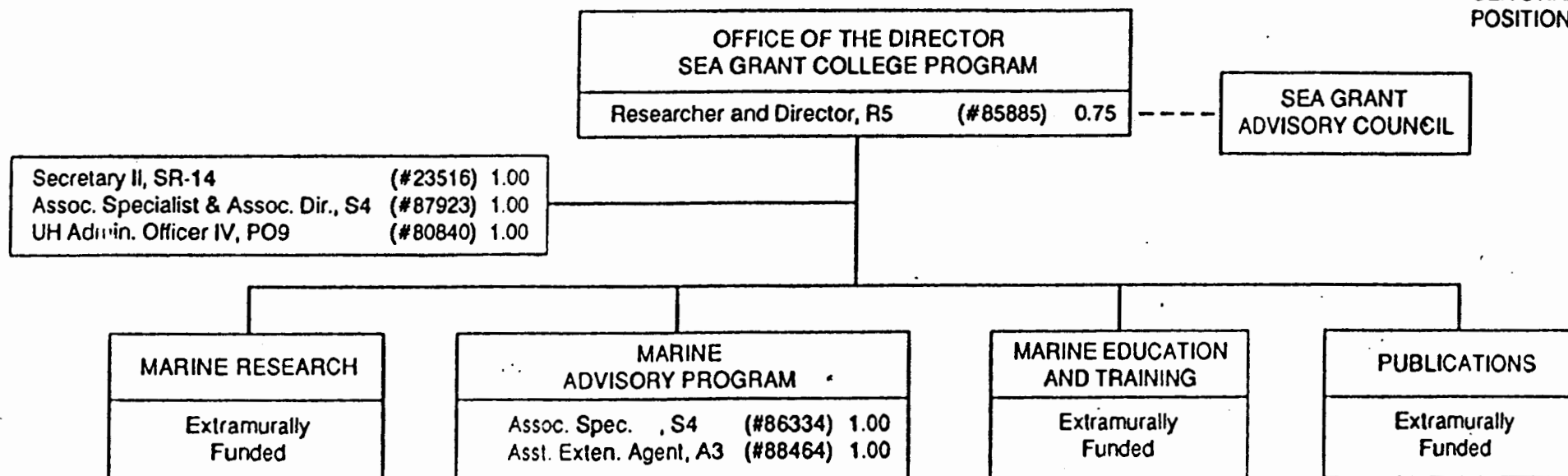


CHART UPDATED
DATE JUN 30 1994