

State of Hawai'i
University of Hawai'i
University of Hawai'i at Manoa

Office: UHM Student Services

Chart: IV

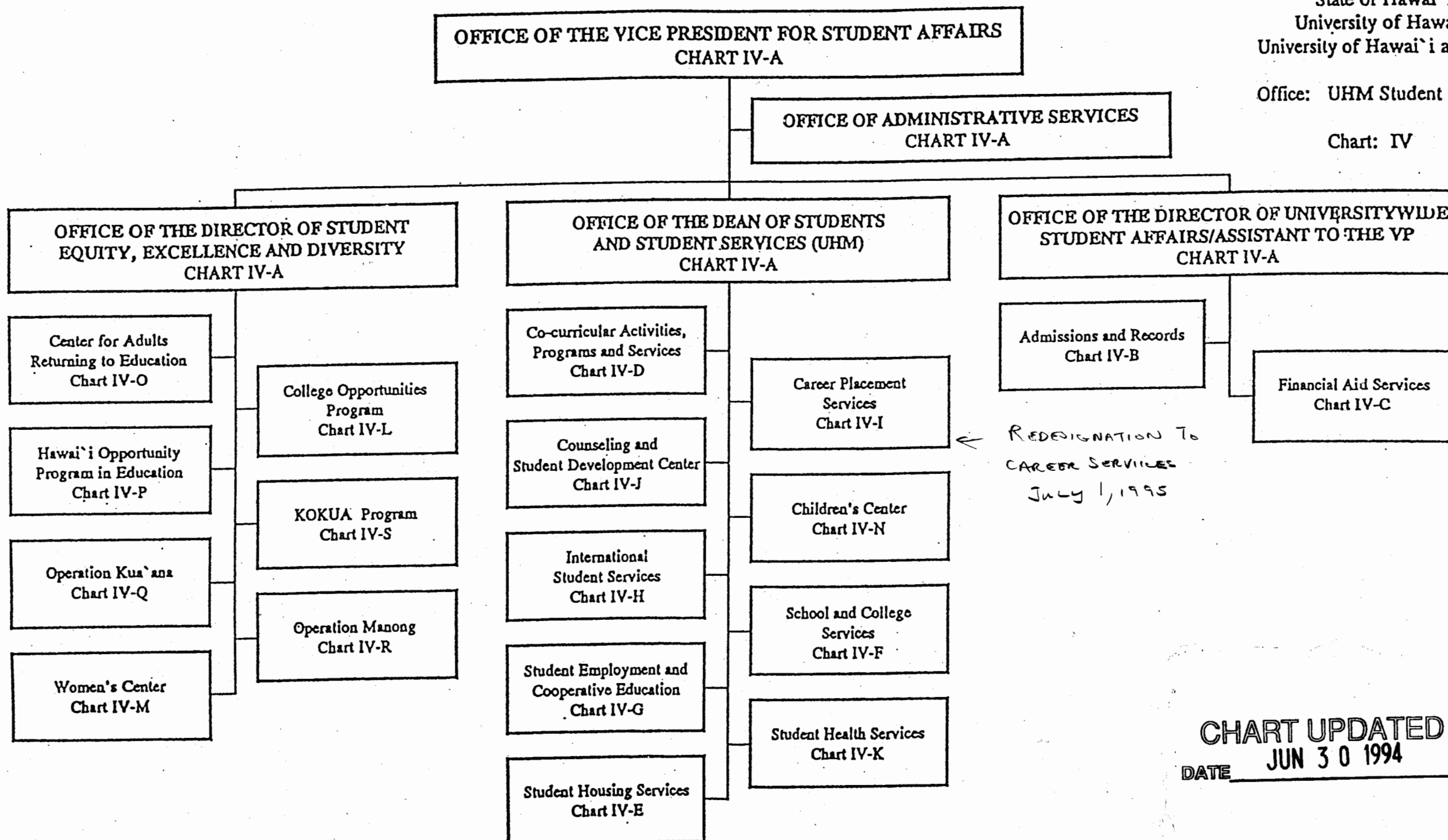


CHART UPDATED
DATE JUN 30 1994

State of Hawai'i
University of Hawai'i
University of Hawai'i at Manoa

Office: UHM Student Services

Chart: IV-A

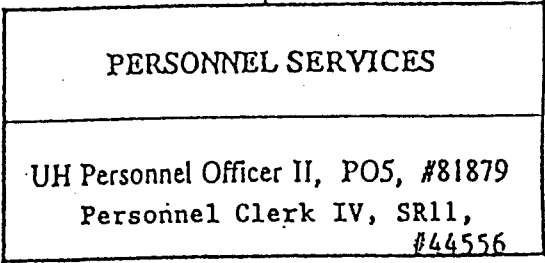
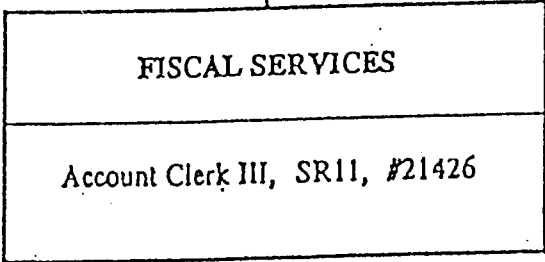
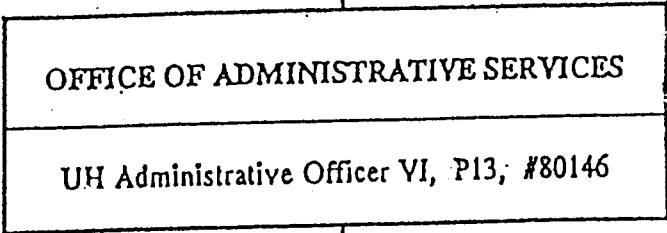
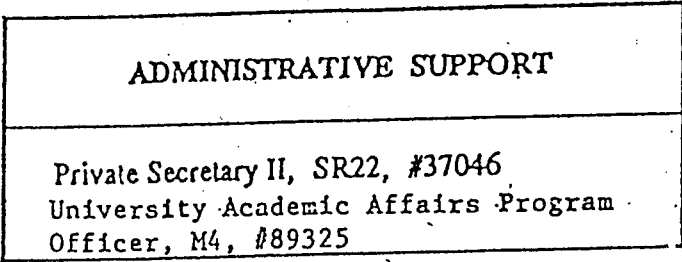
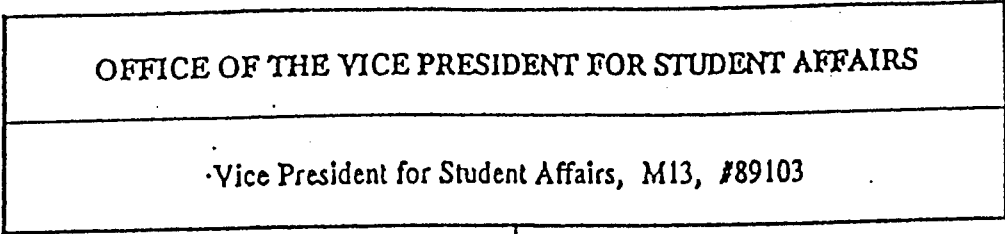
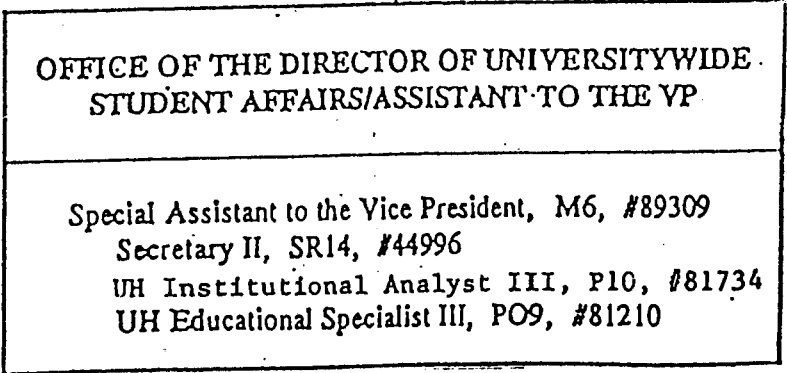
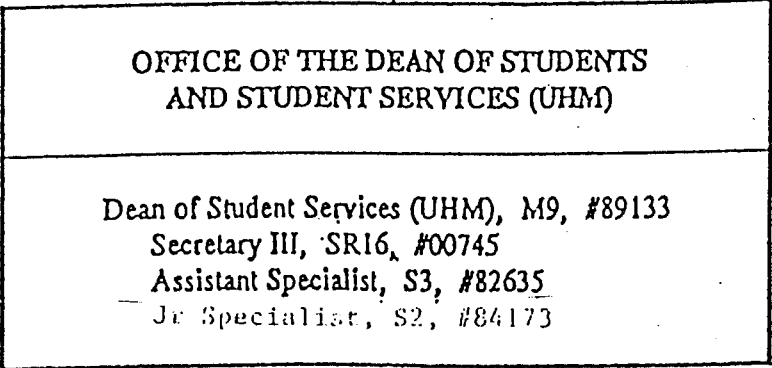
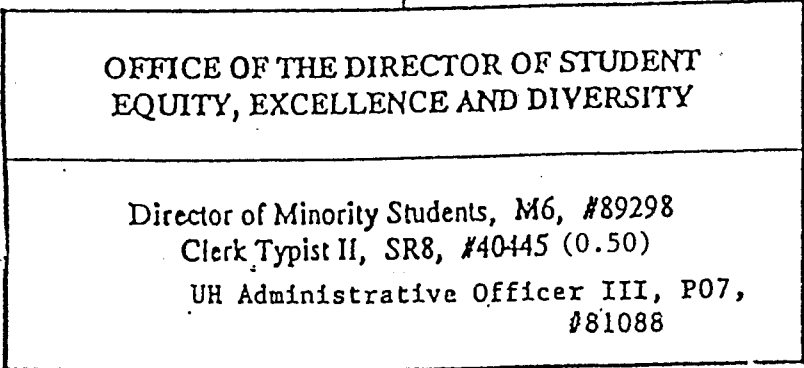


CHART UPDATED
DATE JUN 30 1994



OFFICE OF THE DIRECTOR OF UNIVERSITYWIDE
STUDENT AFFAIRS/ASSISTANT TO THE VP

ADMISSIONS AND RECORDS

Specialist, S5, #82701

ADMINISTRATIVE SUPPORT

Secretary II, SR14, #00751

Specialist, S5, #83776

Secretary I, SR12, #14866

UH Student Services Specialist IV, P12, #81154 (.3)

CHART UPDATED
DATE JUN 30 1994

ADMISSIONS AND RESIDENCY

UH Student Services Specialist IV, P12, #81154 (.7)

Clerk Supervisor III, SR14, #00748

Clerk IV, SR10, #00772, #12550

#12842, #12843

#13495, #13496

#18009, #21427

UH Student Services Specialist III, P09, #80626

UH Student Services Specialist III, P09, #81414

UH Student Services Specialist III, P09, #80625

Clerk IV, SR10, #11496

Clerk IV, SR10, #26538

UH Educ & Acad Supp Sp, P01, #80530

RECORDS AND REGISTRATION

UH Student Services Specialist IV, P12, #81614

UH Student Services Specialist III, P09, #80658

Clerk Supervisor III, SR14, #17447

Clerk IV, SR10, #00750, #13959

#14863, #14864

#14865, #15502

#17450, #18010

, #21430

Clerk III, SR8, #13494

Clerk III, SR8, #26539

Clerk Typist II, SR8, #40006

Scheduler, SR20, #05837

INFORMATION AND
COMPUTER SERVICES

UH Student Services Specialist III, P09, #81070

UH Computer Specialist III, P07, #80017

UH Student Services Specialist I, P03, #81071

Clerk Supervisor II, SR12, #22322

Clerk IV, SR10, #40004

Clerk IV, SR10, #40005

Clerk-Stenographer II, SR9, #22321

Clerk III, SR8, #15501

Clerk III, SR8, #40003

UH Computer Specialist I, P03, #80018

State of Hawai'i
University of Hawai'i
University of Hawai'i at Manoa

Office: UHM Student Services
Admissions and Records

Chart: IV-B

State of Hawai'i
University of Hawai'i
University of Hawai'i at Manoa

Office: UHM Student Services
Financial Aid Services

Chart: IV-C

OFFICE OF THE DIRECTOR OF UNIVERSITYWIDE
STUDENT AFFAIRS/ASSISTANT TO THE VP

FINANCIAL AID SERVICES

Director of Financial Aid, M4, #89184

ADMINISTRATIVE SUPPORT

Secretary II, SR14, #05737

PROGRAM SPECIALISTS

UH Student Services Specialist-III, P09, #81913
UH Student Services Specialist II, P06, #81608
UH Student Services Specialist II, P06, #81607
UH Student Services Specialist II, P06, #81606
UH Student Services Specialist II, P06, #81609
UH Student Services Specialist II, P06, #81151
UH Student Services Specialist II, P06, #80922

DATA AND CLERICAL SUPPORT SECTION

Clerical Supervisor III, SR14, #17599
Clerk-Typist III, SR10, #16967
Clerk-Typist III, SR10, #15265
Clerk-Typist III, SR10, #17600
Clerk-Typist III, SR10, #10929
Clerk III, SR8, #44397

CHART UPDATED
DATE JUN 30 1994

OFFICE OF THE DEAN OF STUDENTS AND STUDENT SERVICES (UHM)

CO-CURRICULAR ACTIVITIES, PROGRAMS AND SERVICES

Director of Bureau of Student Activities, M4 #89190

State of Hawai'i
University of Hawai'i
University of Hawai'i at Manoa

Office: UHM Student Services
Co-Curricular Activities,
Programs and Services

Chart: IV-D

ADMINISTRATIVE AND FISCAL SUPPORT

UH Administrative Officer III, P7, #80163 (R)
UH Adm/Fiscal Support Specialist, P1, #80649 (R)
Account Clerk III, SR II, #25700 (R)
Account Clerk II, SR8, #45362 (R)

CLERICAL SUPPORT

Secretary II, SR14, #13587
Clerk-Typist II, SR8, #28134 (R)
Clerk-Typist II, SR8, #25699 (R)
Clerk II, SR6, #25698 (R)

SEP 22 1994

INTRAMURAL SPORTS

Specialist, S5, #83512
Specialist, S5, #85083
Junior Specialist, S2, #83788
Clerk-Typist II, SR8, #26460

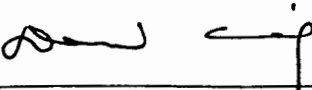
STUDENT LEADERSHIP DEVELOPMENT AND
CO-CURRICULAR
INTERVENTIONS PROGRAMS

Assistant Specialist, S3, #82864
Junior Specialist, S2, #83668
Junior Specialist, S2, #82573
Assistant Specialist, S3, #82597
UH Adm/Fiscal Support Specialist, P1, #81510 (R)
UH Student Services Specialist II, P6, #81374 (R)
UH Student Services Spec. II, P6, #80025 (R)
UH Publication Sp III, P7, #81186 (R)
UH Adm/Fiscal Support Specialist, P1, #81137 (R)
Jr. Specialist, S2, #88334 (R)
Junior Specialist, S2, #88765 (R)

OPERATIONAL PROGRAMS,
FACILITIES AND SERVICES

UH Student Services Specialist III, P9, #80660 (R)
Building Maintenance I, WB9, #28597 (R)
Janitor II, WB2, #25329 (R)
Janitor II, WB2, #25392 (R)
Janitor II, WB2, #44089 (R)
UH Student Services Specialist II, P6, #80631 (R)
UH Student Services Sp I, P3, #80942 (R)

APPROVED:



Doris Ching
Vice President for Student Affairs

10-28-94
Date

OFFICE OF THE DEAN OF STUDENTS AND STUDENT SERVICES

STUDENT HOUSING SERVICES

Director of Student Housing
M6, #89007 (G)

Secretary II
SR14, #00743 (G)

UH Computer Spec II
PO5, #81361 (R)

CONFERENCE
ASSIGNMENTS
OFF-CAMPUS HSG

UH Student Svs Spec II
PO6, #81612 (R)
Clerk-Typist III,
SR10, #34981 (R)
Clerk Typist II,
SR-8, #15287,
#18115 (R)
Clerk II, SR6,
#36106 (R)

PHYSICAL
PLANT

UH Student Svs Spec II,
PO6, #80629 (R)
Clerk Typist II,
SR8, #13566 (R)

UH Registered Architect I,
P13, #77005 (R)^{b)}
UH Environmental Safety
Specialist II, PO5,
#81680 (R)^{b)}

ASSISTANT
DIRECTOR

UH Student Svs Spec IV,
P12, #80630 (R)

EDUCATIONAL
DEVELOPMENT

UH Student Svs Spec II,
PO6, #81611 (R)
Clerk-Stenographer II
SR9, #31273 (R)

FISCAL
PERSONNEL

UH Admin Officer IV,
PO9, #80193 (R)
UH Admin Officer II
PO5, #81103 (R)
Clerk-Steno III,
SR11, #18701 (R)
Account Clerk III,
SR11, #24026 (R)
Cashier I,
SR10, #28336 (R)

MAUKA/MAKAI

UH Student Hsg Coord I,^{a)}
PO5, #80598 (R)
UH Student Hsg Coord I,^{a)}
PO5, #80594 (R)
Clerk Typist II,
SR8, #24249, #23582 (R)
Bldg Maint Worker I,
WB9, #31245, #13578 (R)
Groundskeeper II,
WF2, #31246, #35375 (R)

HALE ALOHA

UH Student Hsg Coord II,
PO7, #80597 (R)
Clerk-Stenographer II,
SR9, #24250 (R)
Bldg Maint Worker I,
WB9, #31242 (R)
Groundskeeper II,
WF2, #24251 (R)

HALE NOELANI

UH Student Hsg Coord I,
PO5, #80924 (R)
Clerk-Typist II,
SR8, #28545 (R)
Bldg Maint Worker I,
WB9, #23493 (R)

HALE WAINANI

UH Student Hsg Coord I,
PO5, #80595 (R)
Clerk-Typist II,
SR8, #31244 (R)
Bldg Maint Worker I,
WB9, #31241 (R)
Groundskeeper II,
WF2, #31243 (R)

SECURITY

Univ Security Officer I,
SR14, #46108^{b)}
Univ Security Officer I,
SR14, #46109^{b)}
Univ Security Officer I,
SR14, #46110^{b)}

EXHIBIT II

State of Hawaii
University of Hawaii
University of Hawaii at Manoa

Office: UHM Student Affairs
Student Housing Services

Chart IV-E

^{a)}Position to be reclassified.

^{b)}Student Housing Services positions assigned to and supervised by Campus Operations

OFFICE OF THE DEAN OF STUDENTS AND STUDENT SERVICES (UHM)

SUPERSEDED

Date OCT 28 1994

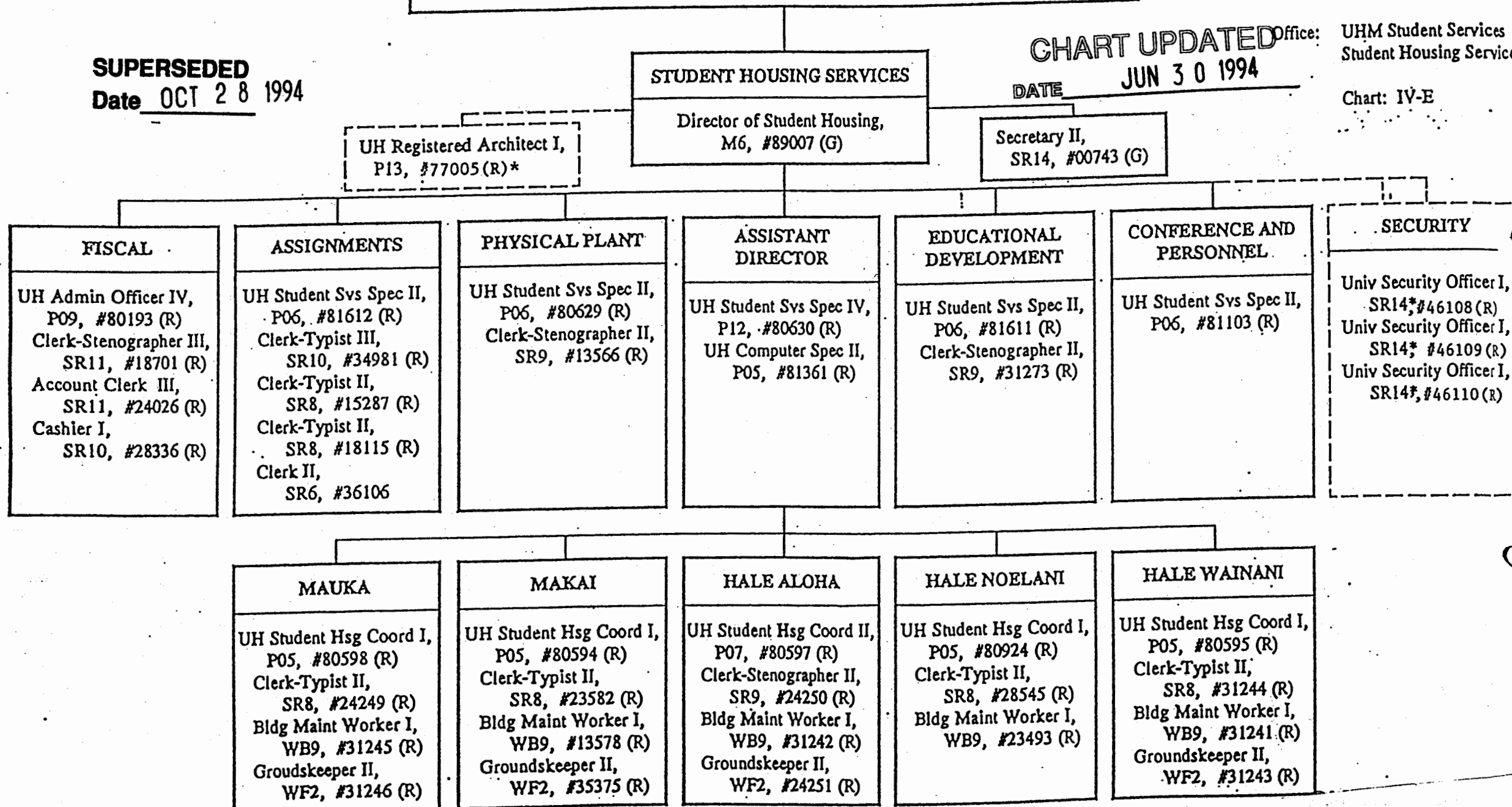
CHART UPDATED

DATE

JUN 30 1994

Office: UHM Student Services
Student Housing Services

Chart: IV-E



State of Hawai'i
University of Hawai'i
University of Hawai'i at Manoa

Office: UHM Student Services
School and College Services

Chart: IV-F

OFFICE OF THE DEAN OF STUDENTS
AND STUDENT SERVICES (UHM)

SCHOOL AND COLLEGE SERVICES
Specialist, S5, #82771

ADMINISTRATIVE SUPPORT
Secretary II, SR14, #25830

Assistant Specialist, S3, #88147
Assistant Specialist, S3, #82637
UH Student Services Specialist II, P06, #81134
UH Student Services Specialist II, P06, #80463

CHART UPDATED
DATE JUN 30 1994

State of Hawai'i
University of Hawai'i
University of Hawai'i at Manoa

Office: UHM Student Services
Student Employment and
Cooperative Education

Chart: IY-G

OFFICE OF THE DEAN OF STUDENTS
AND STUDENT SERVICES (UHM)

STUDENT EMPLOYMENT AND COOPERATIVE EDUCATION

UH Student Services Specialist IV, P12, #80661

ADMINISTRATIVE SUPPORT

UH Student Services Specialist, #92573F (TBE)*
(.50)

Secretary II, SR14, #11046
Clerk Typist II, SR-8, #46550

STUDENT EMPLOYMENT SERVICES

UH Student Services Specialist II, P06, #81063
UH Student Services Specialist I, P03, #81481
UH Educ and Acad Support Spec, P01, #80453S

CHART UPDATED
DATE JUN 30 1994

COOPERATIVE EDUCATION

Junior Specialist, S2, #88117
Junior Specialist, S2, #88121S
Junior Specialist, S2, #88145
Junior Specialist, S2, #82644
Junior Specialist, S2, #82642

* To Be Established

** To Be Established With Variance To UH Educational And Academic Support Specialist

OFFICE OF THE DEAN OF STUDENTS
AND STUDENT SERVICES (UHM)

INTERNATIONAL STUDENT SERVICES

Assistant Specialist, S3, #84594

ADMINISTRATIVE SUPPORT

Secretary II, SR14, #00763

Clerk-Stenographer II, SR9, #12763

Junior Specialist, S2, #88126

Junior Specialist, S2, #83747

Junior Specialist, S2, #88327

State of Hawai`i
University of Hawai`i
University of Hawai`i at Manoa

Office: UHM Student Services
International Student Services

Chart: IV-H

CHART UPDATED
DATE JUN 30 1994

State of Hawai'i
University of Hawai'i
University of Hawai'i at Manoa

Office: UHM Student Services
Career Placement Services

Chart: IV-I

REDESIGNATION
TO CAREER SERVICES
July 1, 1995

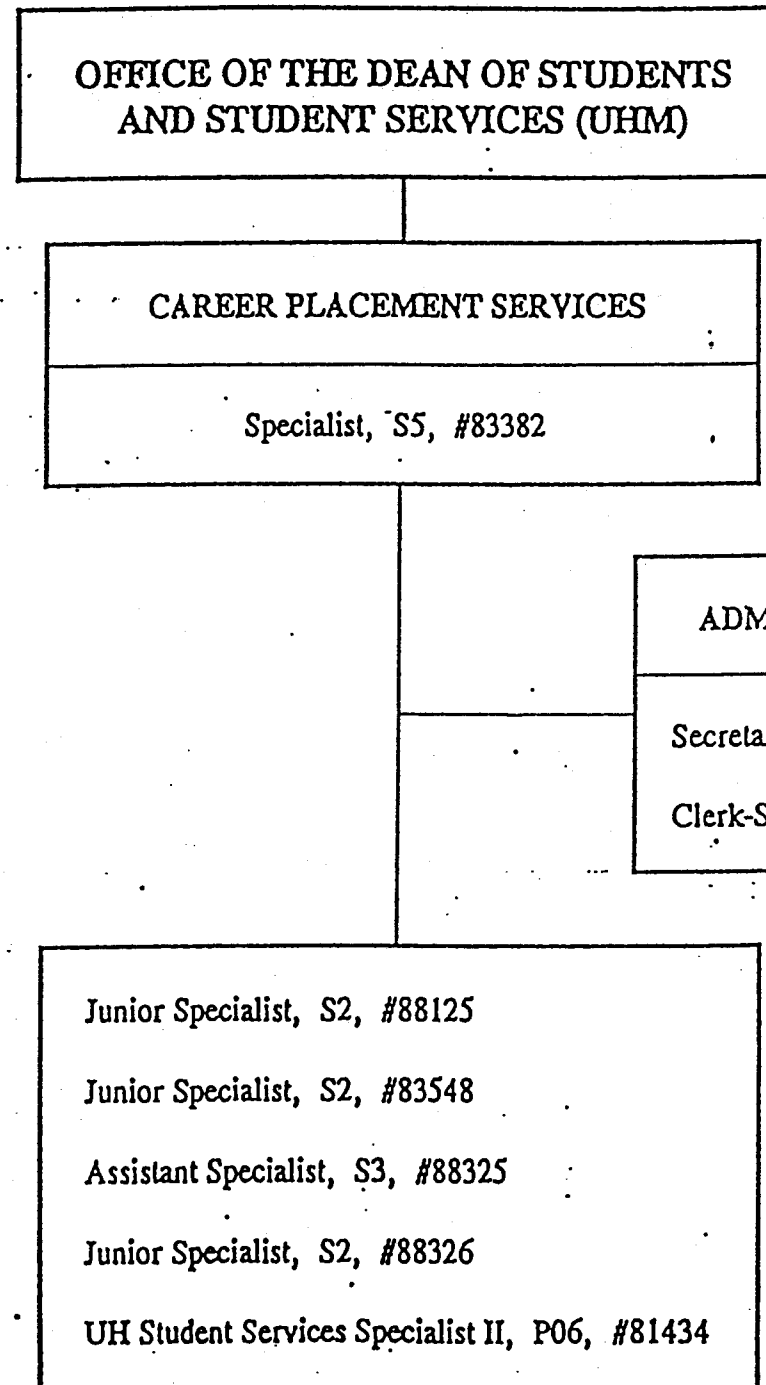


CHART UPDATED
DATE JUN 30 1994

State of Hawai'i
University of Hawai'i
University of Hawai'i at Manoa

Office: UHM Student Services
Counseling and Student
Development Center

Chart: IV-J

CHART UPDATED
DATE JUN 30 1994

OFFICE OF THE DEAN OF STUDENTS
AND STUDENT SERVICES (UHM)

COUNSELING AND STUDENT
DEVELOPMENT CENTER

Specialist, S5, #83151

ADMINISTRATIVE SUPPORT

Secretary II, SR14, #00746
Clerk Typist II, SR8, #15354
Clerk Typist II, SR8, #48942

LEARNING ASSISTANCE

Assistant Specialist, S3, #84554
Assistant Specialist, S3, #88143

TESTING

UH Student Services Specialist II, P06, #80632

COUNSELING

Specialist, S5, #82048 (.50)
Specialist, S5, #83635 (.50)
Specialist, S5, #82695
Assistant Specialist, S3, #82698
Assistant Specialist, S3, #83035
Specialist, S5, #83114
Assistant Specialist, S3, #84139

OFFICE OF THE DEAN OF STUDENTS
AND STUDENT SERVICES (UHM)

STUDENT HEALTH SERVICES

Specialist, S5, #82341

ADMINISTRATIVE SUPPORT

Assistant Specialist, S3, #83539
Secretary II, SR14, #15353
Account Clerk III, SR11, #21512
Medical Records Technician VI, SR13, #03723
Clerk-Typist II, SR8, #35147 (.50)

CHART UPDATED
DATE JUN 30 1994

MEDICAL STAFF

Specialist, S5, #84576 (.50)
Specialist, S5, #84576A (.50)
Specialist, S5, #83261 (.50)
Specialist, S5, #83397 (.50)
Specialist, S5, #84581 (.50)

NURSING STAFF

Registered Professional Nurse IV,
SR22, #10312
Registered Professional Nurse III,
SR20, #13616
Registered Professional Nurse III,
SR20, #13614
Registered Professional Nurse III,
SR20, #22672
Registered Professional Nurse III,
SR20, #13615
Registered Professional Nurse III,
SR20, #18091
Registered Professional Nurse III,
SR20, #13730 (.50)

FAMILY PLANNING CLINIC

Registered Professional Nurse IV,
SR22, #41706

LABORATORY

UH Medical Technician,
P07, #80671 (.50)

OFFICE OF THE DIRECTOR OF STUDENT
EQUITY, EXCELLENCE AND DIVERSITY

State of Hawai'i
University of Hawai'i
University of Hawai'i at Manoa

Office: UHM Student Services
College Opportunities Program

Chart: IV-L

COLLEGE OPPORTUNITIES PROGRAM

UH Educational Specialist IV, P12, #80582

ADMINISTRATIVE SUPPORT

Secretary II, SR14, #23086

UH Student Services Specialist II, P06, #80628

UH Student Services Specialist II, P06, #81736 (.50)

UH Student Services Specialist I, P03, #80606

CHART UPDATED
DATE JUN 30 1994

State of Hawai'i
University of Hawai'i
University of Hawai'i at Manoa

Office: UHM Student Services
Women's Center

Chart: IV-M

OFFICE OF THE DIRECTOR OF STUDENT
EQUITY, EXCELLENCE AND DIVERSITY

WOMEN'S CENTER

Junior Specialist, S2, #88123 (.50)

Junior Specialist, S2, #88144 (.50)

Clerk-Typist II, SR8, #44988 (.50)

CHART UPDATED
DATE JUN 30 1994

**OFFICE OF THE DEAN OF STUDENTS
AND STUDENT SERVICES (UHM)**

CHILDREN'S CENTER

Specialist, S5, #88318

ADMINISTRATIVE SUPPORT

UH Educational Associate I, P03, #80232

TEACHING STAFF

UH Educational Associate III, P07, #80029
UH Educational Associate II, P05, #80109
UH Educational Associate II, P05, #80496S(.75)
UH Educational Associate I, P03, #80233
UH Educational Associate I, P03, #80234S
UH Educational Associate I, P03, #80424S
UH Educational Associate I, P03, #80455S

State of Hawai'i
University of Hawai'i
University of Hawai'i at Manoa

Office: UHM Children's Center

Chart: IV-N

CHART UPDATED
DATE JUN 30 1994

State of Hawai'i
University of Hawai'i
University of Hawai'i at Manoa

Office: UHM Student Services
Center for Adults
Returning to Education

Chart: IV-O

OFFICE OF THE DIRECTOR OF STUDENT
EQUITY, EXCELLENCE AND DIVERSITY

CENTER FOR ADULTS
RETURNING TO EDUCATION

Assistant Specialist, S3, #88317
Junior Specialist, S2, #88762
Clerk Typist II, SR8, #43364 (.50)

CHART UPDATED
DATE JUN 30 1994

State of Hawai'i
University of Hawai'i
University of Hawai'i at Manoa

Office: UHM Student Services
Hawai'i Opportunity
Program in Education

Chart: IV-P

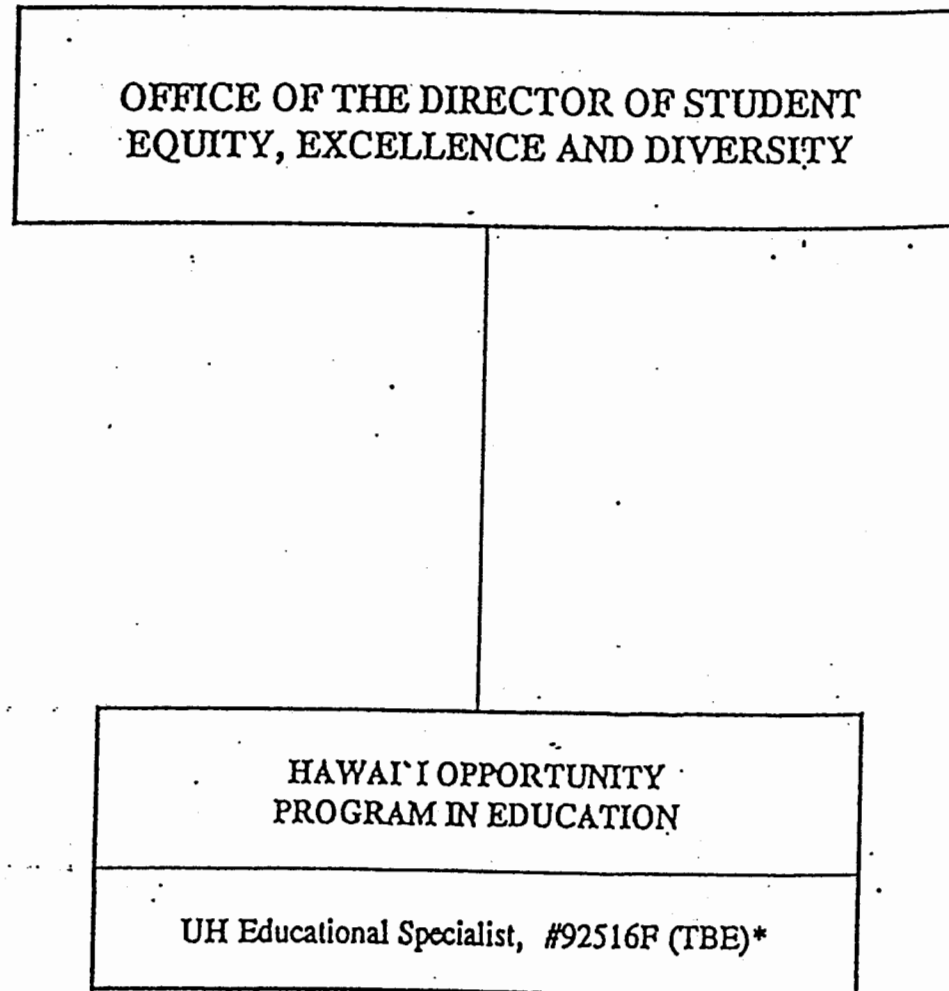


CHART UPDATED
DATE JUN 30 1994

State of Hawai'i
University of Hawai'i
University of Hawai'i at Manoa

Office: UHM Student Services
Operation Kua'ana

Chart: IV-Q

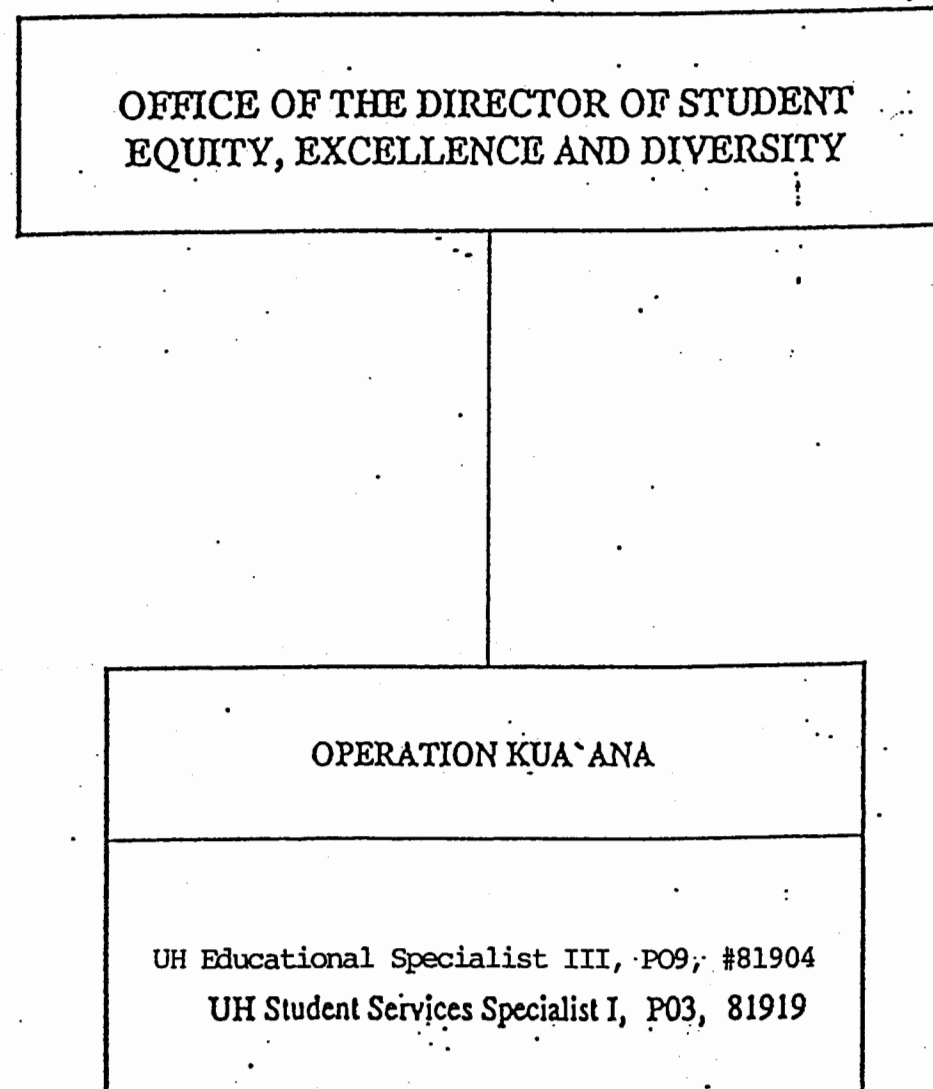


CHART UPDATED
DATE JUN 30 1994

State of Hawai`i
University of Hawai`i
University of Hawai`i at Manoa

Office: UHM Student Services
Operation Manong

Chart: IV-R

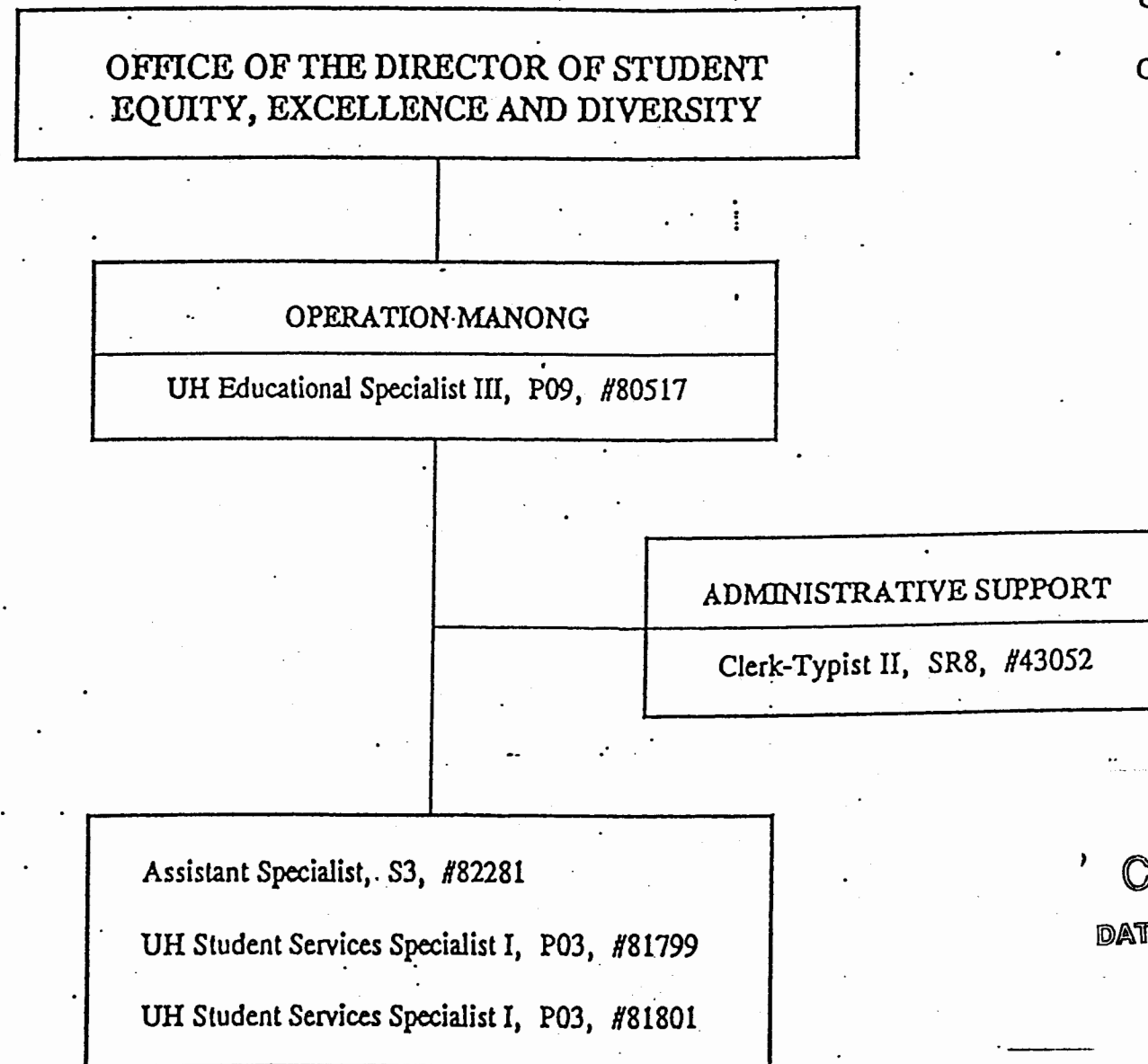


CHART UPDATED
DATE JUN 30 1994

OFFICE OF THE DIRECTOR OF STUDENT
EQUITY, EXCELLENCE AND DIVERSITY

KOKUA PROGRAM

Educational Specialist III, P09, #80666

Educational Specialist I, P03, #80636

Educational Specialist I, P03, #80608

Educational Specialist II, P06, #81566

Clerk Typist III, SR10, #42421

UH Educational Specialist, #92569F*

State of Hawai'i
University of Hawai'i
University of Hawai'i at Manoa

Office: UHM Student Services
KOKUA Program

Chart IV-S

CHART UPDATED
DATE JUN 30 1994

*Pending establishment

OFFICE OF THE DEAN OF STUDENTS AND STUDENT SERVICES (UHM)

State of Hawai'i
University of Hawai'i
University of Hawai'i at Manoa

Office: UHM Student Services
Co-curricular Activities,
Programs and Services

CO-CURRICULAR ACTIVITIES, PROGRAMS AND SERVICES

Director of Bureau of Student Activities, M4, #89190

Chart: IV-D

CHART UPDATED

DATE JUN 30 1994

ADMINISTRATIVE AND FISCAL SUPPORT

UH Administrative Officer III, P7, #80163 (R)
UH Adm/Fiscal Support Specialist, P1, #80649 (R)
Account Clerk III, SR11, #25700 (R)
Account Clerk II, SR8, #45362 (R)

CLERICAL SUPPORT

Secretary II, SR14, #13587
Clerk-Typist II, SR8, #28134 (R)
Clerk-Typist II, SR8, #25699 (R)
Clerk II, SR6, #25698 (R)

SUPERSEDED

Date SEP 22 1994

INTRAMURAL SPORTS

Specialist, S5, #83512
Specialist, S5, #85083
Junior Specialist, S2, #83788
Clerk-Typist II, SR8, #26460

STUDENT LEADERSHIP DEVELOPMENT AND
CO-CURRICULAR
INTERVENTION PROGRAMS

Assistant Specialist, S3, #82864
Junior Specialist, S2, #83668
Junior Specialist, S2, #82573
Assistant Specialist, S3, #82597
UH Adm/Fiscal Support Specialist, P1, #81510 (R)
UH Student Services Specialist II, P6, #81374 (R)
UH Student Services Spec. II, P6, #80025 (R)
Assistant Specialist, S3, #88334 (R)
UH Adm/Fiscal Support Specialist, P1, #81137 (R)
UH Publication Sp III, P7, #81186 (R)

OPERATIONAL PROGRAMS,
FACILITIES AND SERVICES

UH Student Services Specialist III, P9, #80660 (R)
Building Maintenance I, WB9, #28597 (R)
Janitor II, WB2, #25329 (R)
Janitor II, WB2, #25392 (R)
Janitor II, WB2, #44089 (R)
UH Student Services Specialist II, P6, #80631 (R)
UH Student Services Sp I, P3, #80942 (R)
UH Student Services Specialist, #92524F (R) (TBE)*