

OFFICE OF THE DEAN*
CHART II

STATE OF HAWAII
UNIVERSITY OF HAWAII
UNIVERSITY OF HAWAII AT MANOA
COLLEGE OF TROPICAL AGRICULTURE & HUMAN RESOURCES

ORGANIZATIONAL CHART
CHART I

PUBLICATIONS AND INFORMATION
CHART IV

OFFICE OF ADMINISTRATIVE SERVICES
CHART V

INTERNATIONAL PROGRAMS
CHART VI

OFFICE OF PLANNING AND MANAGEMENT SYSTEMS
CHART VII

OFFICE OF THE ASSOCIATE DEAN
ACADEMIC AFFAIRS
CHART VIII

OFFICE OF THE DIRECTOR
HAWAII INSTITUTE OF TROPICAL AGRICULTURE
AND HUMAN RESOURCES
CHART IX

INSTRUCTION PROGRAM
CHART A, Y

EXTENSION
PROGRAMS
CHART P, Q, X

COUNTY
ADMINISTRATION
CHART III

ENVIRONMENTAL BIOCHEMISTRY
BIOSYSTEMS ENGINEERING
AGRICULTURAL & RESOURCES ECONOMICS
AGRONOMY & SOIL SCIENCE
ANIMAL SCIENCES
PLANT MOLECULAR PHYSIOLOGY
ENTOMOLOGY

CHART B
CHART C
CHART D
CHART E
CHART F
CHART G
CHART H

FOOD SCIENCE & HUMAN NUTRITION
HORTICULTURE
PLANT PATHOLOGY
HUMAN RESOURCES

CHART I
CHART J
CHART K
CHART L

CHART UPDATED
DATE JUN 30 1994

*& Director of Cooperative Science & Education

STATE OF HAWAII
UNIVERSITY OF HAWAII
UNIVERSITY OF HAWAII AT MANOA
COLLEGE OF TROPICAL AGRICULTURE & HUMAN RESOURCES

OFFICE OF THE DEAN
CHART II

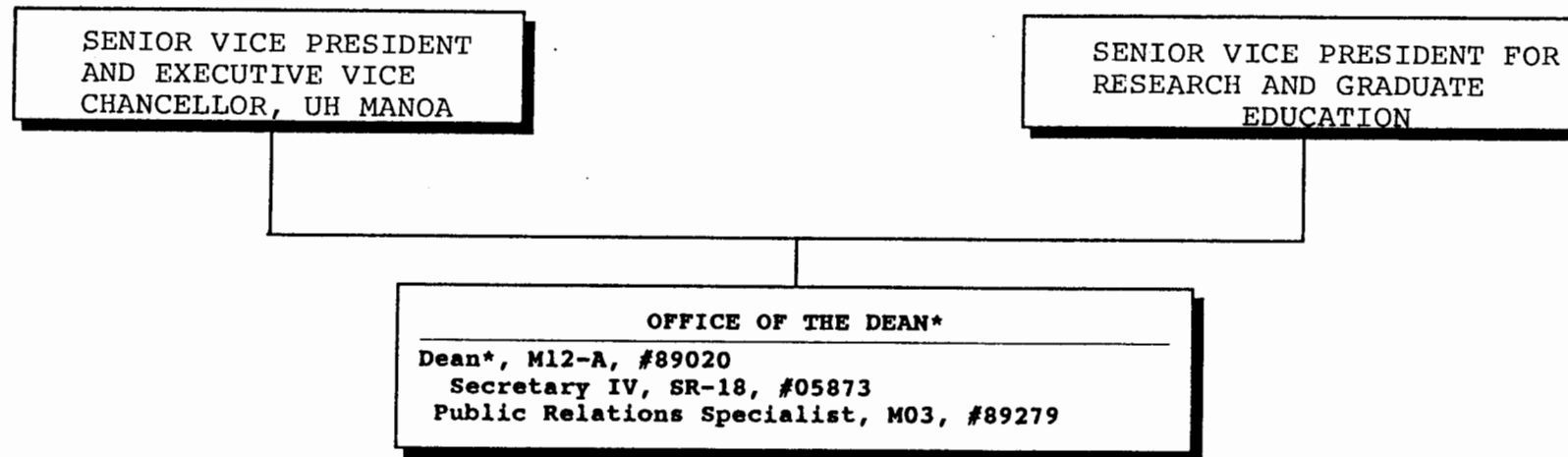


CHART UPDATED
DATE JUN 30 1994

*& Director of Cooperative Science & Education

STATE OF HAWAII
UNIVERSITY OF HAWAII
UNIVERSITY OF HAWAII AT MANOA
COLLEGE OF TROPICAL AGRICULTURE & HUMAN RESOURCES

HAWAII INSTITUTE OF TROPICAL AGRICULTURE & HUMAN RESOURCES
COUNTY ADMINISTRATION
CHART III

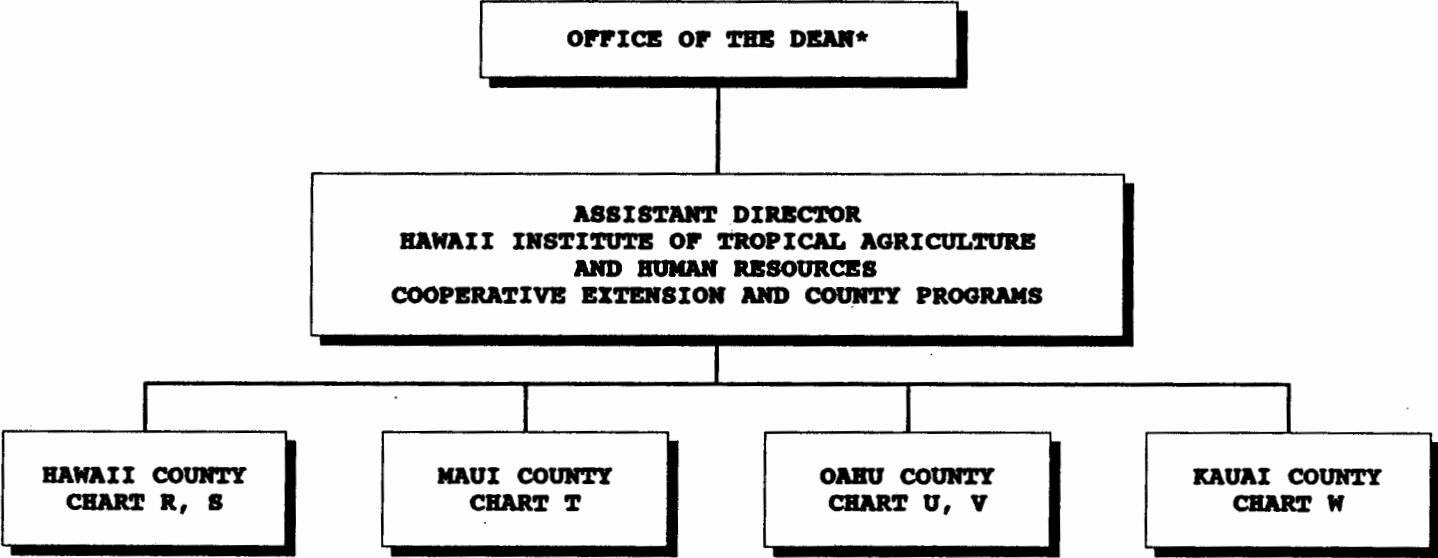


CHART UPDATED
DATE JUN 30 1994

* & Director of Cooperative Science & Education

STATE OF HAWAII
UNIVERSITY OF HAWAII
UNIVERSITY OF HAWAII AT MANOA
COLLEGE OF TROPICAL AGRICULTURE & HUMAN RESOURCES

OFFICE OF PUBLICATIONS AND INFORMATION
CHART IV

OFFICE OF THE DEAN*

OFFICE OF PUBLICATIONS AND INFORMATION

UH Public Information Office III, P12, #81436
Asst Spec, S3, #83136
UH Editor III, P09, #81391
Information Spec III, SR-20, #00788
Public Editor III, SR-20, #03617
Clerk-Steno III, SR-11, #18008
Clerk-Typist II, SR-08, #00804
Clerk III, SR-08, #05182

CHART UPDATED
DATE JUN 30 1994

* & Director of Cooperative Science & Education

STATE OF HAWAII
UNIVERSITY OF HAWAII
UNIVERSITY OF HAWAII AT MANOA
COLLEGE OF TROPICAL AGRICULTURE & HUMAN RESOURCES

OFFICE OF ADMINSTRATIVE SERVICES
CHART V

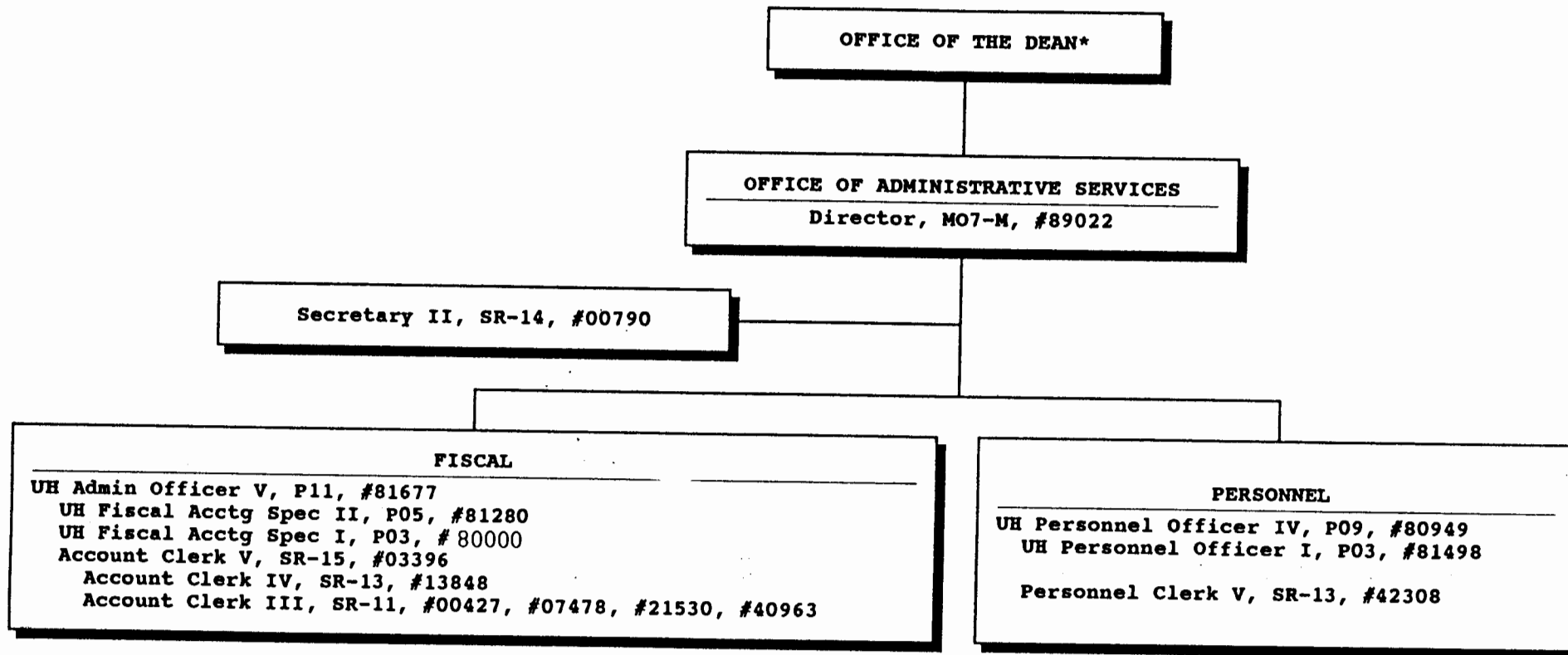


CHART UPDATED
DATE JUN 30 1991

*& Director of Cooperative Science & Education
+Pending establishment 94521F, UH Fis. Acct. Spec.
94522F UH Personnel Officer

STATE OF HAWAII
UNIVERSITY OF HAWAII
UNIVERSITY OF HAWAII AT MANOA
COLLEGE OF TROPICAL AGRICULTURE & HUMAN RESOURCES

OFFICE OF INTERNATIONAL PROGRAMS
CHART VI

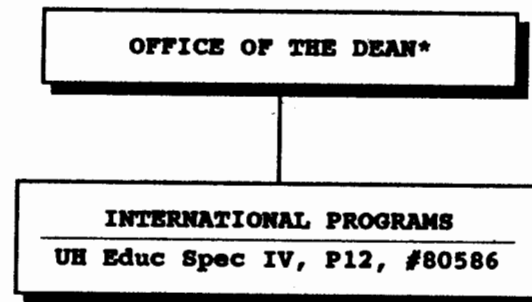


CHART UPDATED
DATE JUN 30 1994

*& Director of Cooperative Science & Education

STATE OF HAWAII
UNIVERSITY OF HAWAII
UNIVERSITY OF HAWAII AT MANOA
COLLEGE OF TROPICAL AGRICULTURE & HUMAN RESOURCES

OFFICE OF PLANNING AND MANAGEMENT SYSTEMS
CHART VII

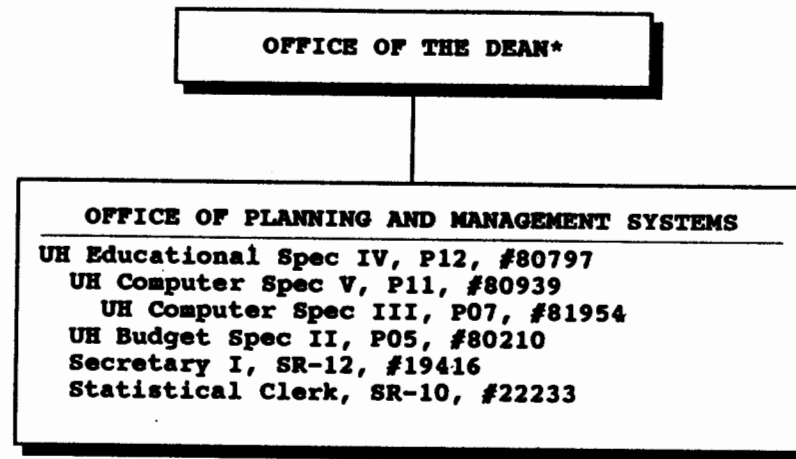


CHART UPDATED
DATE JUN 30 1994

*& Director of Cooperative Science & Education

STATE OF HAWAII
UNIVERSITY OF HAWAII
UNIVERSITY OF HAWAII AT MANOA
COLLEGE OF TROPICAL AGRICULTURE & HUMAN RESOURCES

OFFICE OF THE ASSOCIATE DEAN, ACADEMIC AFFAIRS
CHART VIII

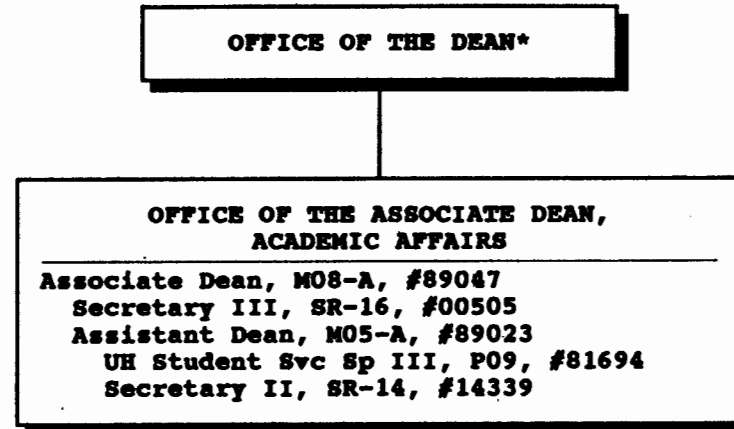


CHART UPDATED
DATE JUN 30 1994

* & Director of Cooperative Science & Education

STATE OF HAWAII
UNIVERSITY OF HAWAII
UNIVERSITY OF HAWAII AT MANOA
COLLEGE TROPICAL AGRICULTURE & HUMAN RESOURCES

OFFICE OF THE DIRECTOR, HITAHR
CHART IX

OFFICE OF THE DEAN*

OFFICE OF THE DIRECTOR
HAWAII INSTITUTE OF TROPICAL AGRICULTURE & HUMAN RESOURCES

Director, HITAHR, M11-A, #89124
Secretary III, SR-16, #00425
Clerk-Steno III, SR-11, #03397 (.50)
Clerk-Typist II, SR-08, #42680
Asst Dir, HITAHR, (Agriculture & Applied Behavioral Sciences
Research), M05-A, #89186
Secretary II, SR-14, #22831
Asst Dir, HITAHR, (Agriculture & Resource Development),
M05-A, #89017
Secretary II, SR-14, #22932
Asst Dir, HITAHR, (Cooperative Extension and County Programs),
M05-A, #89069

Asst Extension Agent, A-3, #85476
Clerk-Typist II, SR-08, #17592
Secretary II, SR-14, #00789

CHART UPDATED
DATE JUN 30 1994

* & Director of Cooperative Science & Education

STATE OF HAWAII
UNIVERSITY OF HAWAII
UNIVERSITY OF HAWAII AT MANOA
COLLEGE OF TROPICAL AGRICULTURE & HUMAN RESOURCES

PEARL CITY FACILITY
POSITION ORGANIZATION CHART: A

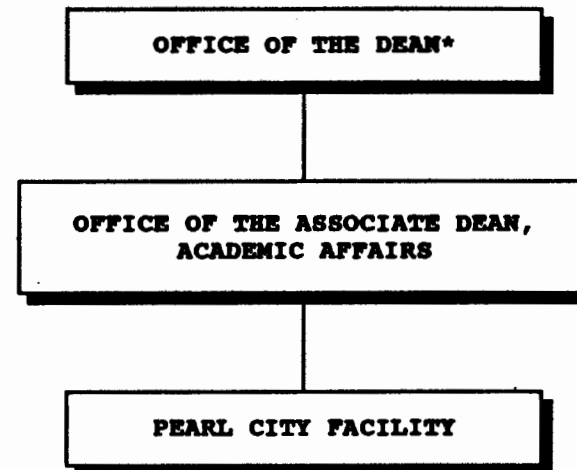


CHART UPDATED

DATE JUN 30 1994

*& Director of Cooperative Science & Education

STATE OF HAWAII
UNIVERSITY OF HAWAII
UNIVERSITY OF HAWAII AT MANOA
COLLEGE OF TROPICAL AGRICULTURE & HUMAN RESOURCES

DEPARTMENT OF ENVIRONMENTAL BIOCHEMISTRY
POSITION ORGANIZATION CHART: B

OFFICE OF THE DEAN*

DEPARTMENT OF ENVIRONMENTAL BIOCHEMISTRY
Chairperson (Appointed from among faculty positions)

Secretary II, SR-14, #14758
Clerk-Typist II, SR-08, #42424

RESEARCH

Research Positions (3.75)
Researcher, R5, #84325, #82976
Assoc Researcher, R4, #83177
Asst Researcher, R3, #83811, #83034
Specialist, S5, #82238
UH Res Assoc V, P09, #80323, #81326 (.65)
UH Res Assoc IV, P07, #80324 (.95)
UH Res Assoc III, P05, #80269
UH Res Assoc II, P03, #80267 (.50),
#80266, #80265

EXTENSION

Extension Positions (2.10)
Researcher, R5, #84325, #82976
Asst Researcher, R3, #83811
Specialist, S5, #82238
Asst Specialist, S4, #84006
UH Educational Spec III, P09, #80250
UH Educational Spec II, P06, #80980
UH Res Assoc V, P09, #81326 (.35)
UH Res Assoc IV, P07, #80324 (.05)
UH Res Assoc III, P05, #81311, #81313,
#81325

INSTRUCTION

Instruction Positions (1.30)
Researcher, R5, #84235, #82976
Assoc Researcher, R4, #83177
Asst Researcher, R3, #83811, #83034
Assoc Professor, I4R, #82027

* & Director of Cooperative Science & Education

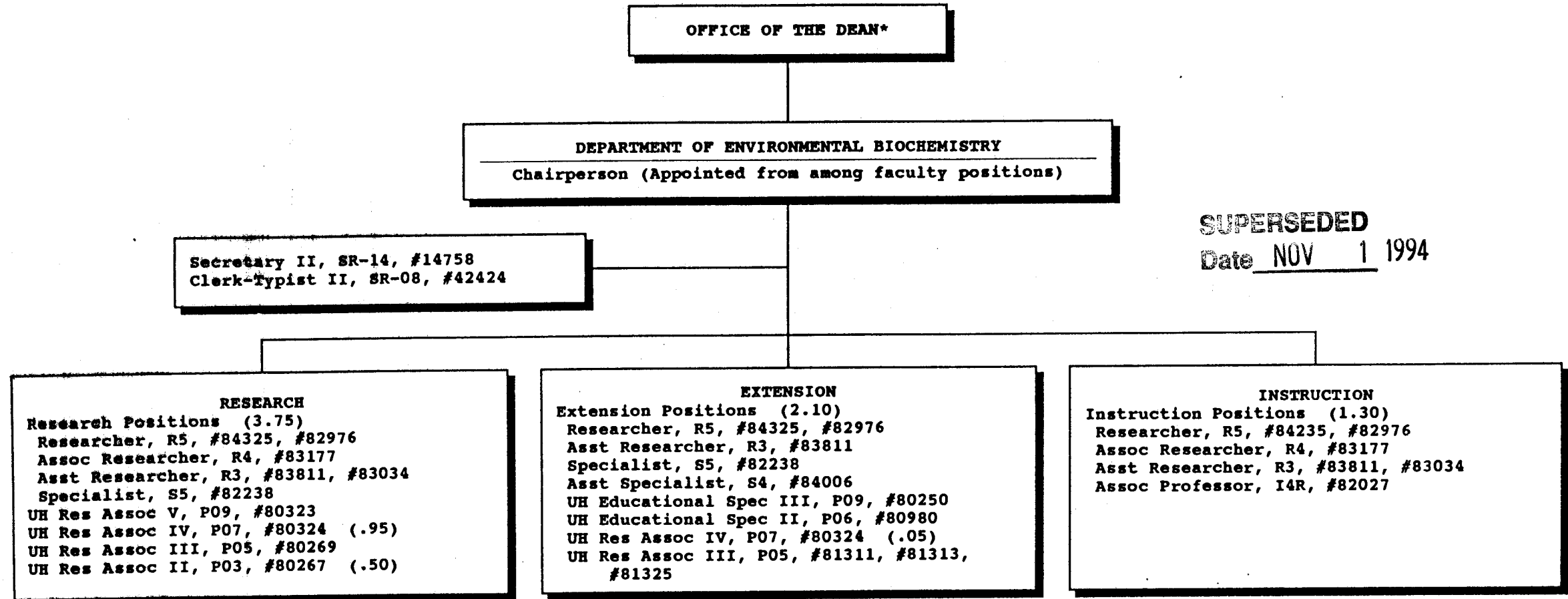
APPROVED:

DEAN

NOV 1 1994

STATE OF HAWAII
UNIVERSITY OF HAWAII
UNIVERSITY OF HAWAII AT MANOA
COLLEGE OF TROPICAL AGRICULTURE & HUMAN RESOURCES

DEPARTMENT OF ENVIRONMENTAL BIOCHEMISTRY
POSITION ORGANIZATION CHART: B



SUPERSEDED
Date NOV 1 1994

* & Director of Cooperative Science & Education

CHART UPDATED
DATE JUN 30 1994

STATE OF HAWAII
UNIVERSITY OF HAWAII
UNIVERSITY OF HAWAII AT MANOA
COLLEGE OF TROPICAL AGRICULTURE & HUMAN RESOURCES

DEPARTMENT OF BIOSYSTEMS ENGINEERING
POSITION ORGANIZATION CHART: C

OFFICE OF THE DEAN*

DEPARTMENT OF BIOSYSTEMS ENGINEERING
Chairperson (Appointed from among faculty positions)

Secretary II, SR-14, #12960
Clerk-Typist II, SR-08, #45478

RESEARCH
Research Positions (6.20)
Researcher, R5, #83399, #84477
#84600, #84631, #82848
Assoc Researcher, R4, #83022
Asst Researcher, R3, #84193
Asst Professor, I3R, #82919
Graduate Assistant, GA-R, #88219 (.50)
UH Mechanical Engineer I, P-12,
#80784 (.75)
Agr Eqp Dev Wkg Supv, WB-13, #05729
Agr Lab Tech I, WB-12, #05730

EXTENSION
Extension Positions (1.75)
Researcher, R5, #83399, #84477,
#84600, #84631
Asst Researcher, R3, #84193
UH Research Associate I, P-12,
#80784 (.25)

INSTRUCTION
Instruction Positions (2.05)
Researcher, R5, #83399, #84477,
#84600, #84631, #82848
Assoc Researcher, R4, #83022
Asst Researcher, R3, #84193
Asst Professor, I3R, #82919
Graduate Assistant, GA, #88630 (.50)

* & Director of Cooperative Science & Education

CHART UPDATED
DATE JUN 30 1994

STATE OF HAWAII
UNIVERSITY OF HAWAII
UNIVERSITY OF HAWAII AT MANOA
COLLEGE OF TROPICAL AGRICULTURE & HUMAN RESOURCES
DEPARTMENT OF AGRICULTURAL & RESOURCE ECONOMICS
POSITION ORGANIZATION CHART: D

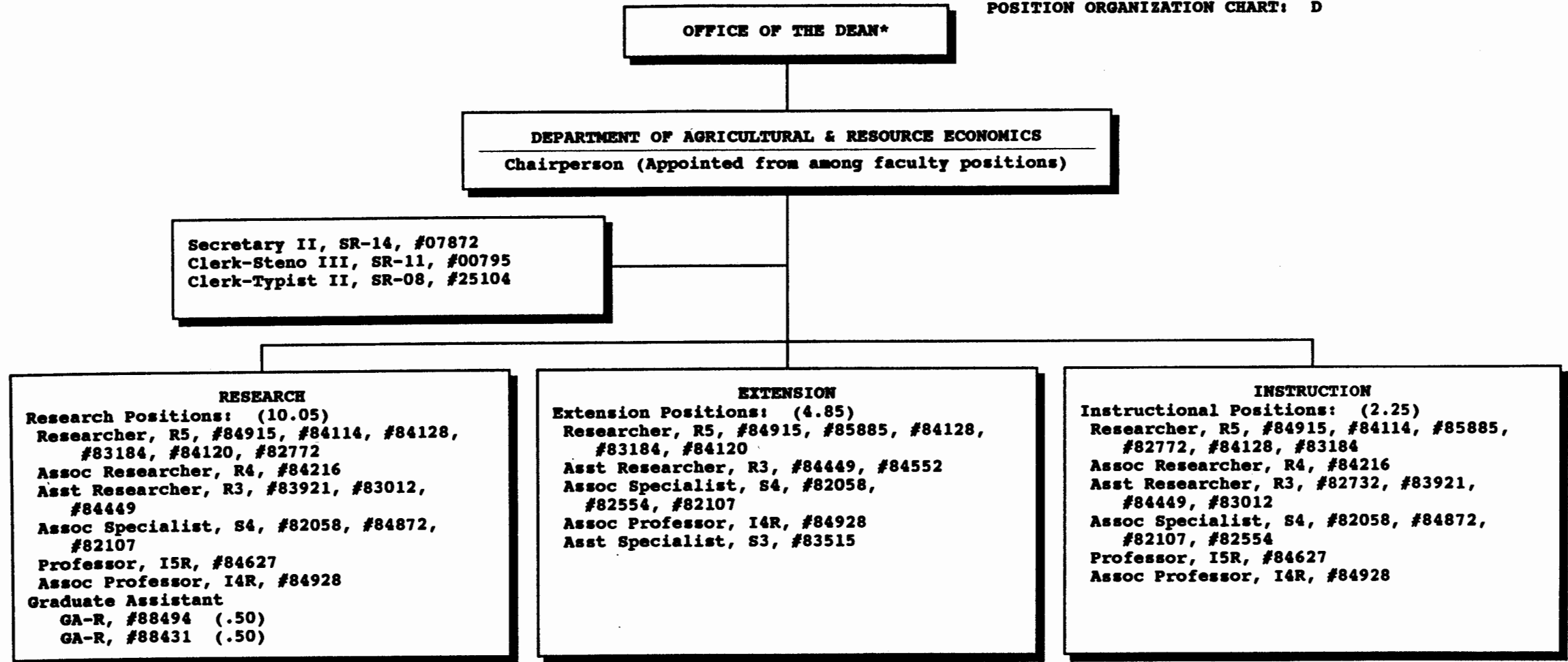


CHART UPDATED
JUN 30 1994
DATE _____

* & Director of Cooperative Science & Education

STATE OF HAWAII
UNIVERSITY OF HAWAII
UNIVERSITY OF HAWAII AT MANOA
COLLEGE OF TROPICAL AGRICULTURE & HUMAN RESOURCES

DEPARTMENT OF AGRONOMY & SOIL SCIENCE
POSITION ORGANIZATION CHART: E

OFFICE OF THE DEAN*

DEPARTMENT OF AGRONOMY & SOIL SCIENCE
Chairperson (Appointed from among faculty positions)

Secretary II, SR-14, #05838
Clerk-Steno III, SR-11, #03397 (.50)
Clerk-Typist II, SR-08, #42681

RESEARCH

Research Positions: (9.70)
Researcher, R5, #82598, #84052, #82792
#84171, #84408, #82127, #83938,
#83046
Assoc Researcher, R4, #83117, #83260,
#84420, #83149, #82516
Asst Researcher, R3, #83629, #84080
Agr Res Tech V, SR-16, #11020
Agr Res Tech IV, SR-14, #00398

EXTENSION

Extension Positions: (2.00)
Researcher, R5, #82598, #82127,
#83046
Asst Specialist, S3, #83785, #84488

INSTRUCTION

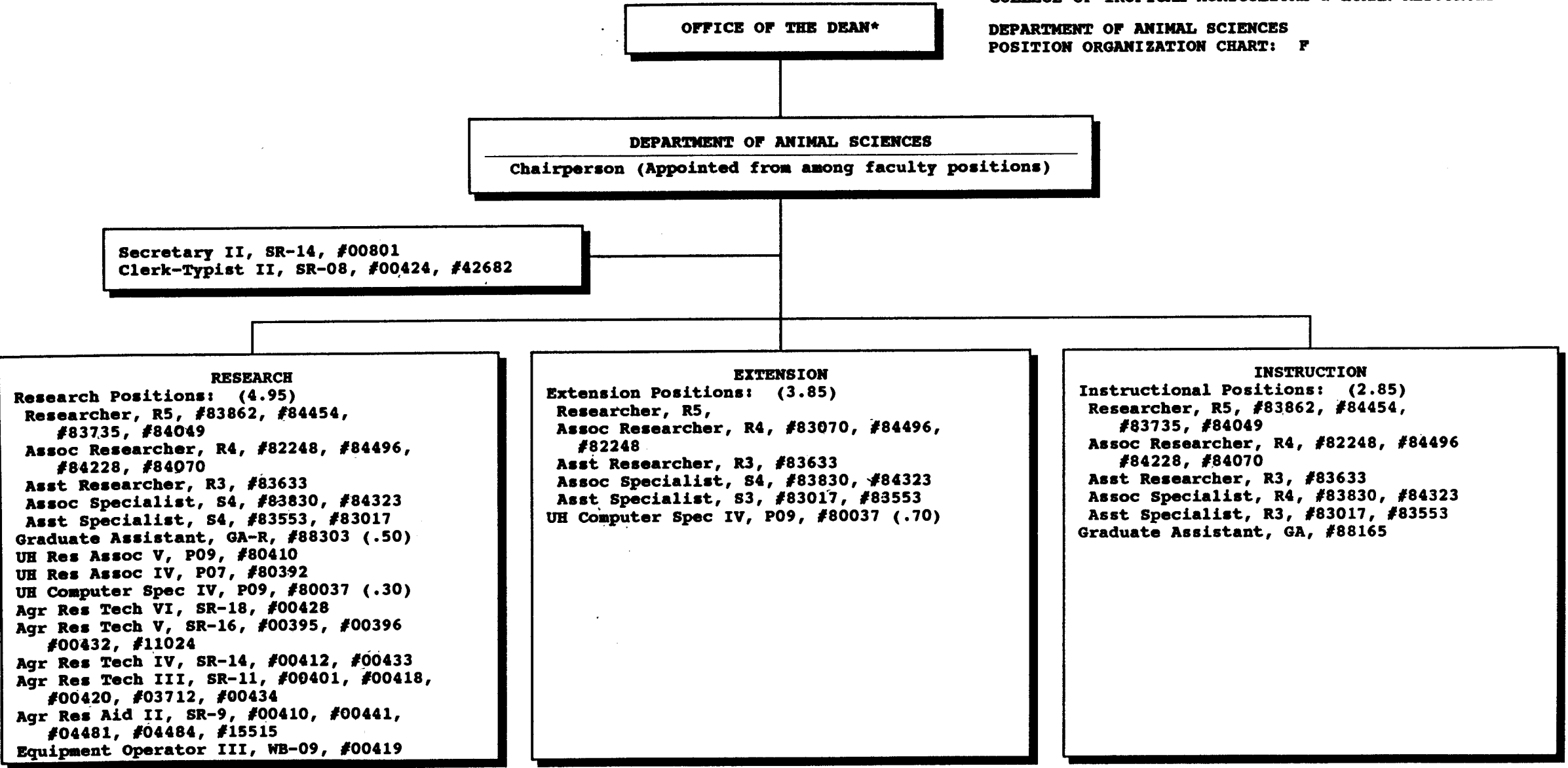
Instructional Positions: (3.55)
Researcher, R5, #82598, #84052, #82792,
#84171, #84408, #82127, #83938,
#83046
Assoc Researcher, R4, #83117, #83260,
#84420, #83149
Asst Researcher, R3, #84080, #83629
Asst Specialist, S3, #83785, #84354,
#84488
Graduate Assistant, GA, #88038,
#88028 (.50)

* & Director of Cooperative Science & Education

CHART UPDATED
JUN 30 1994
DATE _____

STATE OF HAWAII
UNIVERSITY OF HAWAII
UNIVERSITY OF HAWAII AT MANOA
COLLEGE OF TROPICAL AGRICULTURE & HUMAN RESOURCES

DEPARTMENT OF ANIMAL SCIENCES
POSITION ORGANIZATION CHART: F

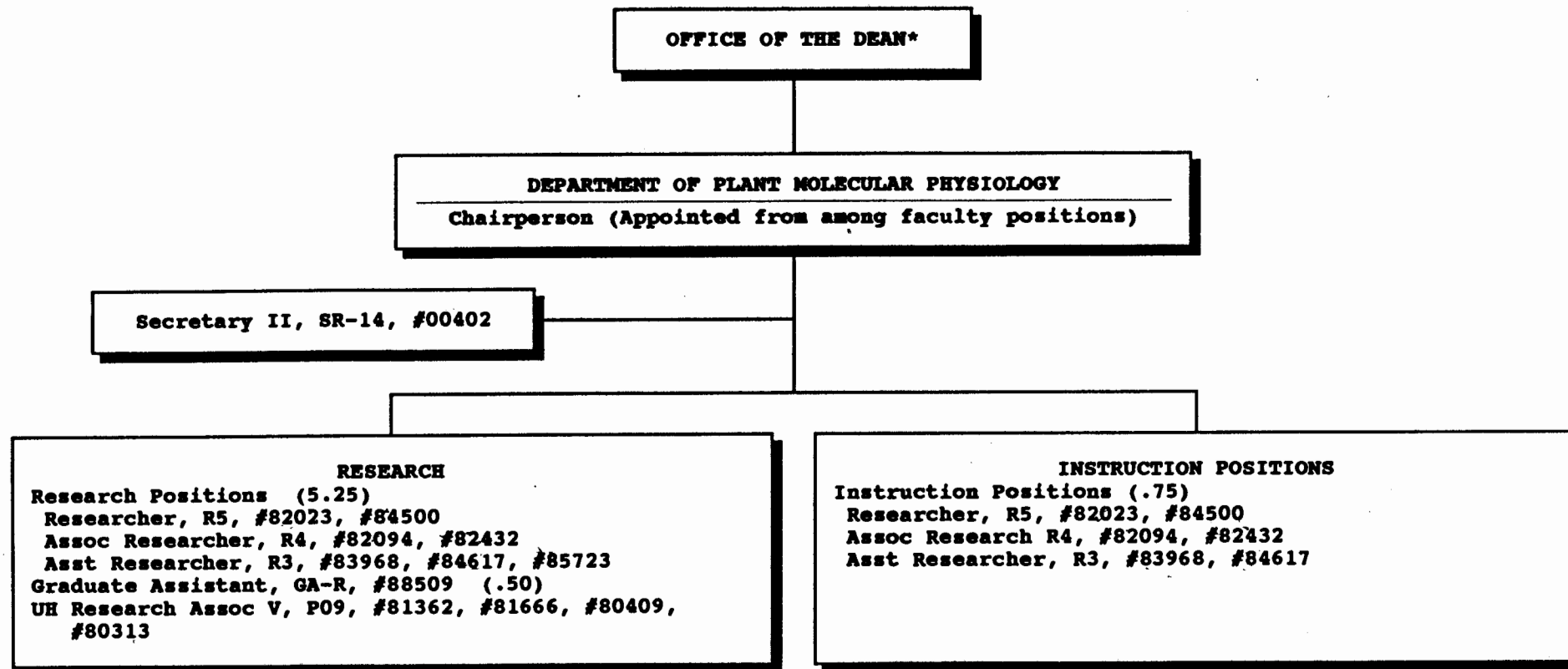


* & Director of Cooperative Science & Education

CHART UPDATED
JUN 30 1994
DATE

STATE OF HAWAII
UNIVERSITY OF HAWAII
UNIVERSITY OF HAWAII AT MANOA
COLLEGE OF TROPICAL AGRICULTURE & HUMAN RESOURCES

DEPARTMENT OF PLANT MOLECULAR PHYSIOLOGY
POSITION ORGANIZATION CHART: G

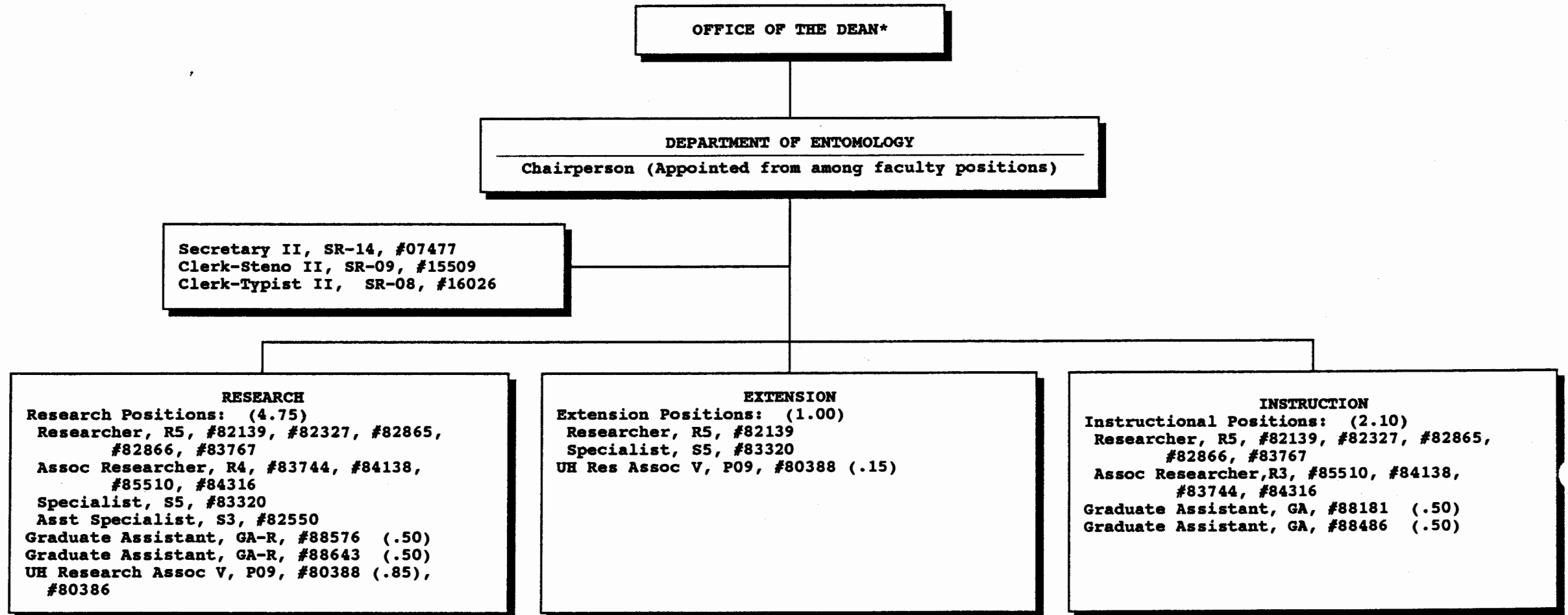


*& Director of Cooperative Science & Education

CHART UPDATED
DATE JUN 30 1994

STATE OF HAWAII
UNIVERSITY OF HAWAII
UNIVERSITY OF HAWAII AT MANOA
COLLEGE OF TROPICAL AGRICULTURE & HUMAN RESOURCES

DEPARTMENT OF ENTOMOLOGY
POSITION ORGANIZATION CHART: H



* & Director of Cooperative Science & Education

APPROVED:

DEAN

NOV 1 1994

STATE OF HAWAII
UNIVERSITY OF HAWAII
UNIVERSITY OF HAWAII AT MANOA
COLLEGE OF TROPICAL AGRICULTURE & HUMAN RESOURCES

DEPARTMENT OF ENTOMOLOGY
POSITION ORGANIZATION CHART: H

OFFICE OF THE DEAN*

DEPARTMENT OF ENTOMOLOGY

Chairperson (Appointed from among faculty positions)

Secretary II, SR-14, #07477
Clerk-Steno II, SR-09, #15509
Clerk-Typist II, SR-08, #16026

SUPERSEDED
Date NOV 1 1994

RESEARCH

Research Positions: (4.75)
Researcher, R5, #82139, #82327, #82865,
#82866, #83767
Assoc Researcher, R4, #83744, #84138,
#85510, #84316
Specialist, S5, #83320
Asst Specialist, S3, #82550
Graduate Assistant, GA-R, #88576 (.50)
Graduate Assistant, GA-R, #88643 (.50)
UH Research Assoc V, P09, #80388 (.85),
#80386

EXTENSION

Extension Positions: (1.00)
Researcher, R5, #82139
Specialist, S5, #83320
UH Res Assoc V, P09, #80388 (.15)
UH Res Assoc IV, P07, #81326 (1.00)

INSTRUCTION

Instructional Positions: (2.10)
Researcher, R5, #82139, #82327, #82865,
#82866, #83767
Assoc Researcher, R3, #85510, #84138,
#83744, #84316
Graduate Assistant, GA, #88181 (.50)
Graduate Assistant, GA, #88486 (.50)

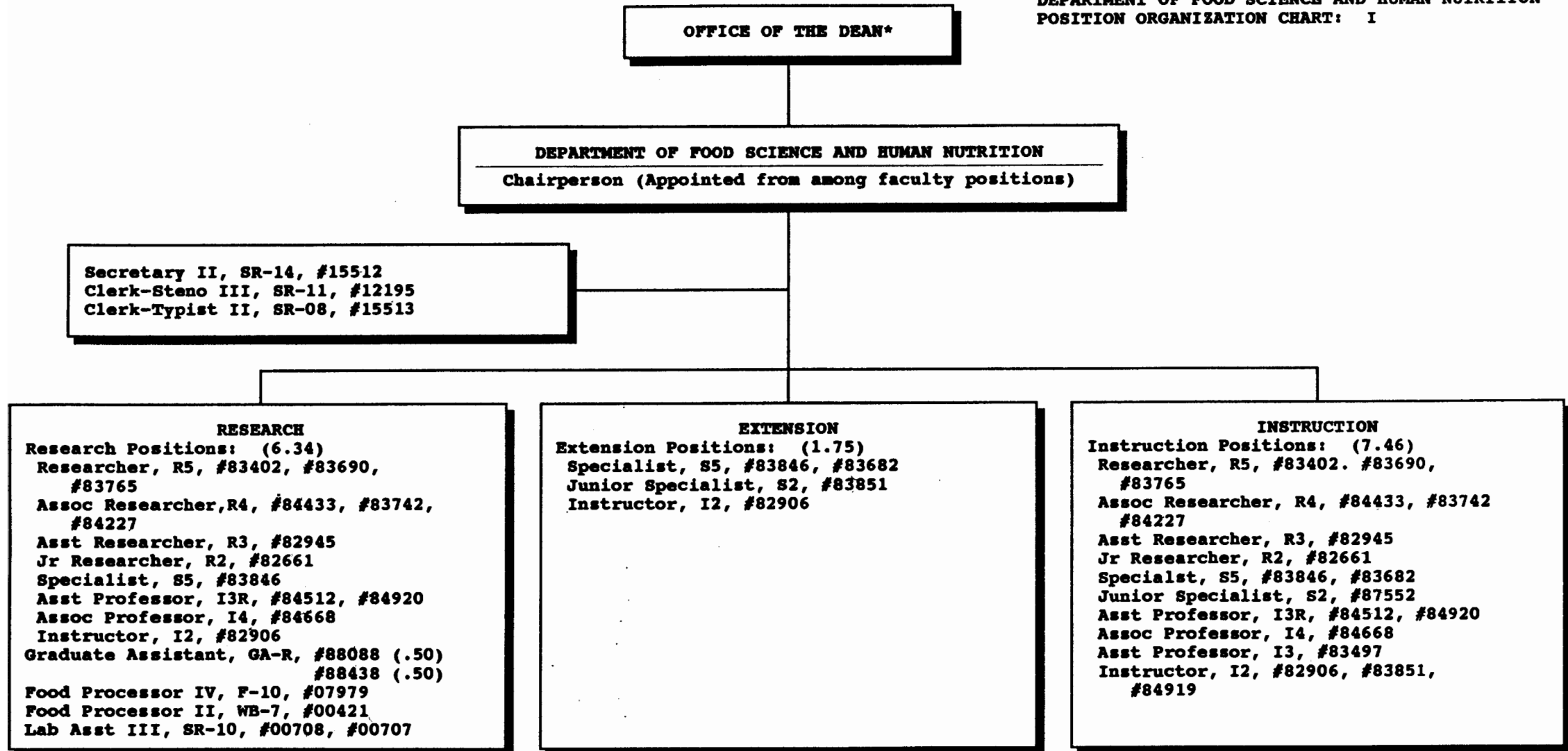
* & Director of Cooperative Science & Education

CHART UPDATED

DATE JUN 30 1994

STATE OF HAWAII
UNIVERSITY OF HAWAII
UNIVERSITY OF HAWAII AT MANOA
COLLEGE OF TROPICAL AGRICULTURE & HUMAN RESOURCES

DEPARTMENT OF FOOD SCIENCE AND HUMAN NUTRITION
POSITION ORGANIZATION CHART: I

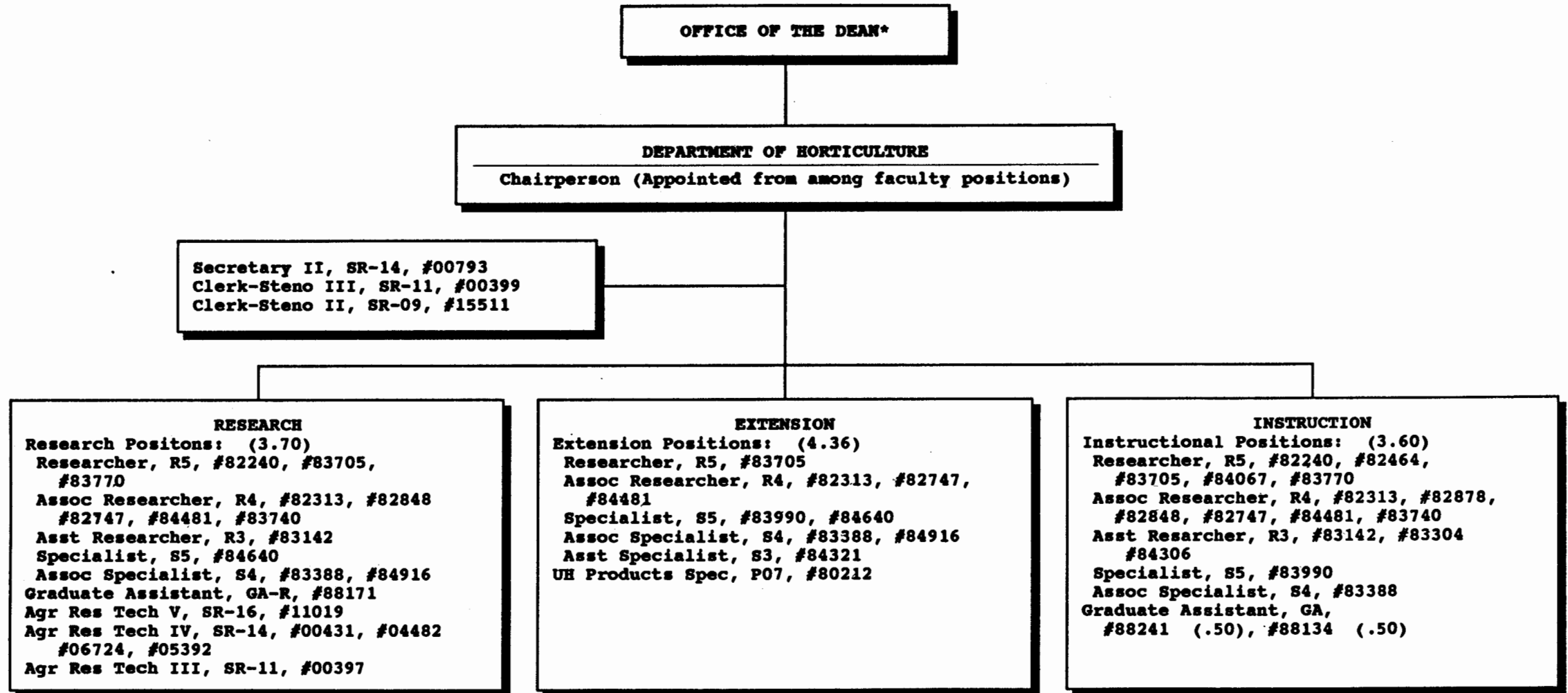


*& Director of Cooperative Science & Education

CHART UPDATED
DATE JUN 30 1994

STATE OF HAWAII
UNIVERSITY OF HAWAII
UNIVERSITY OF HAWAII AT MANOA
COLLEGE OF TROPICAL AGRICULTURE & HUMAN RESOURCES

DEPARTMENT OF HORTICULTURE
POSITION ORGANIZATION CHART: J

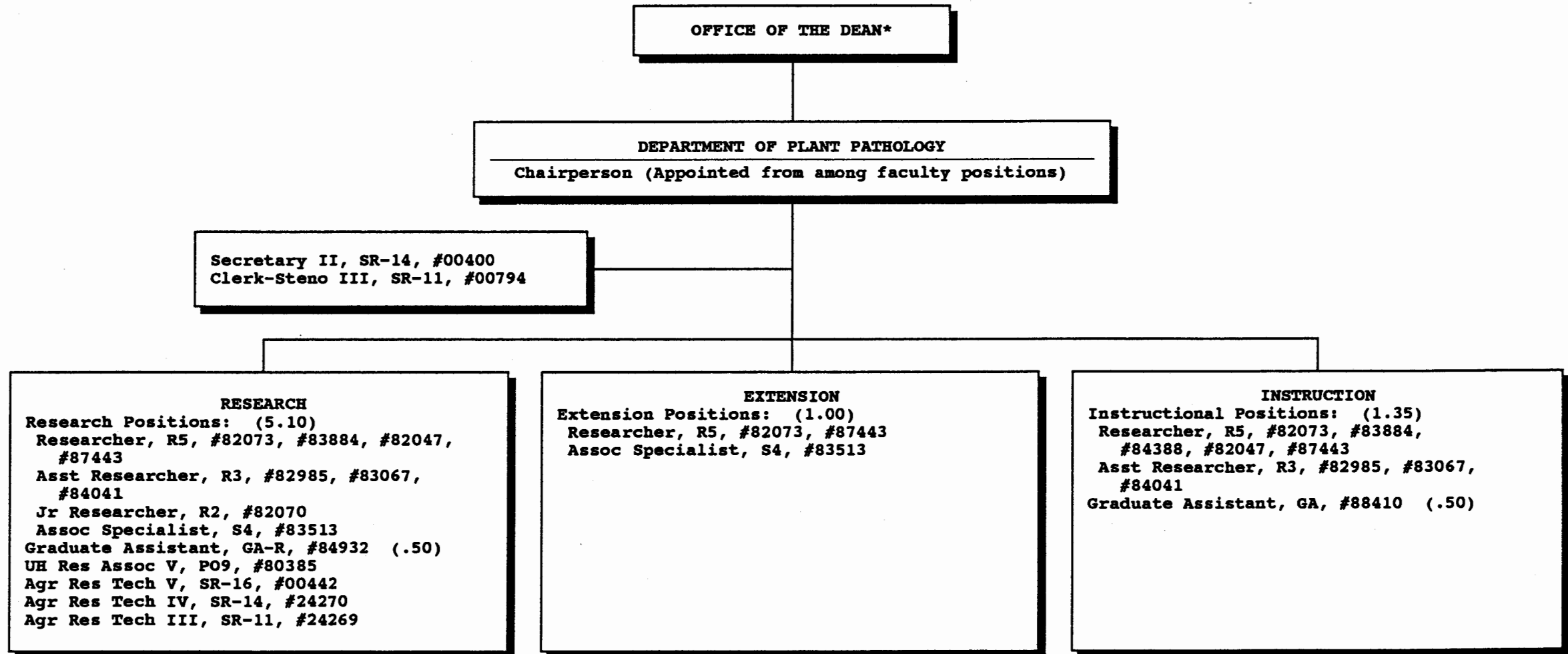


* & Director of Cooperative Science & Education

CHART UPDATED
DATE JUN 30 1994

STATE OF HAWAII
UNIVERSITY OF HAWAII
UNIVERSITY OF HAWAII AT MANOA
COLLEGE OF TROPICAL AGRICULTURE & HUMAN RESOURCES

DEPARTMENT OF PLANT PATHOLOGY
POSITION ORGANIZATION CHART: K



* & Director of Cooperative Science & Education

APPROVED:

DEAN

NOV 1 1994

STATE OF HAWAII
UNIVERSITY OF HAWAII
UNIVERSITY OF HAWAII AT MANOA
COLLEGE OF TROPICAL AGRICULTURE & HUMAN RESOURCES

DEPARTMENT OF PLANT PATHOLOGY
POSITION ORGANIZATION CHART: K

OFFICE OF THE DEAN*

DEPARTMENT OF PLANT PATHOLOGY

Chairperson (Appointed from among faculty positions)

Secretary II, SR-14, #00400
Clerk-Steno III, SR-11, #00794

SUPERSEDED
Date NOV 1 1994

RESEARCH

Research Positions: (5.10)
Researcher, R5, #82073, #83884, #82047,
#87443
Asst Researcher, R3, #82985, #83067,
#84041
Jr Researcher, R2, #82070
Assoc Specialist, S4, #83513
Graduate Assistant, GA-R, #84932 (.50)
UH Res Assoc V, PO9, #80385
UH Res Assoc II, PO3, #80265
Agr Res Tech V, SR-16, #00442
Agr Res Tech IV, SR-14, #24270
Agr Res Tech III, SR-11, #24269

EXTENSION

Extension Positions: (1.00)
Researcher, R5, #82073, #87443
Assoc Specialist, S4, #83513

INSTRUCTION

Instructional Positions: (1.35)
Researcher, R5, #82073, #83884,
#84388, #82047, #87443
Asst Researcher, R3, #82985, #83067,
#84041
Graduate Assistant, GA, #88410 (.50)

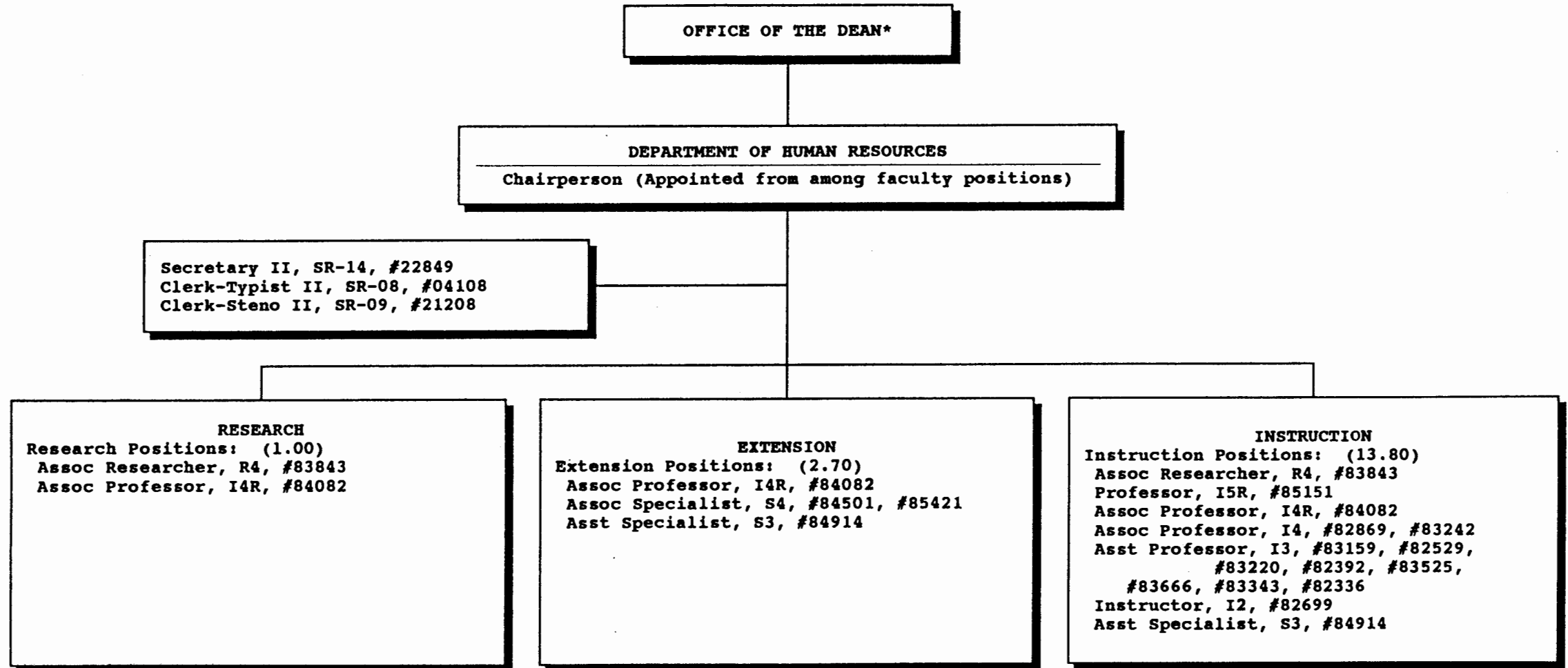
* & Director of Cooperative Science & Education

CHART UPDATED

DATE JUN 30 1994

STATE OF HAWAII
UNIVERSITY OF HAWAII
UNIVERSITY OF HAWAII AT MANOA
COLLEGE OF TROPICAL AGRICULTURE & HUMAN RESOURCES

DEPARTMENT OF HUMAN RESOURCES
POSITION ORGANIZATION CHART: L



* & Director of Cooperative Science & Education

CHART UPDATED
DATE JUN 30 1994

STATE OF HAWAII
UNIVERSITY OF HAWAII
UNIVERSITY OF HAWAII AT MANOA
COLLEGE OF TROPICAL AGRICULTURE & HUMAN RESOURCES

4-H OFFICE
POSITION ORGANIZATION CHART: P

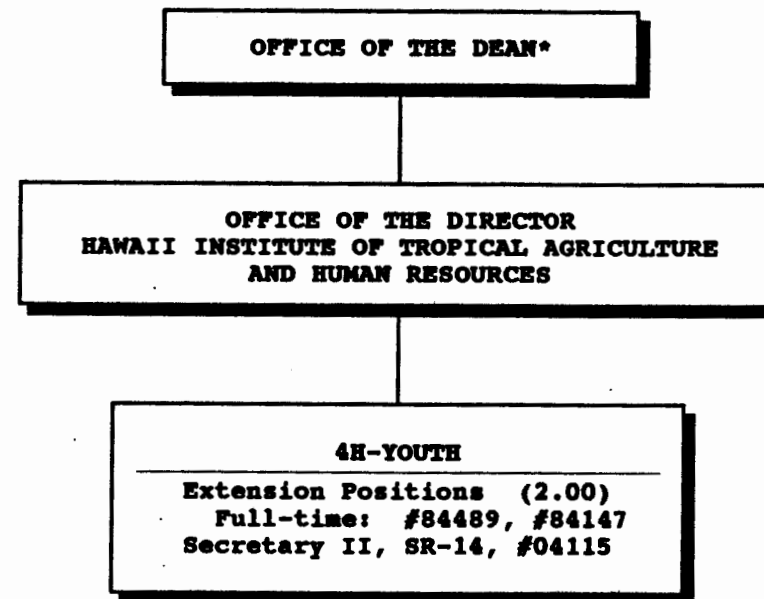


CHART UPDATED
DATE JUN 30 1994

*& Director of Cooperative Science & Education

STATE OF HAWAII
UNIVERSITY OF HAWAII
UNIVERSITY OF HAWAII AT MANOA
COLLEGE OF TROPICAL AGRICULTURE & HUMAN RESOURCES

COMMUNITY RESOURCE DEVELOPMENT
POSITION ORGANIZATION CHART: Q

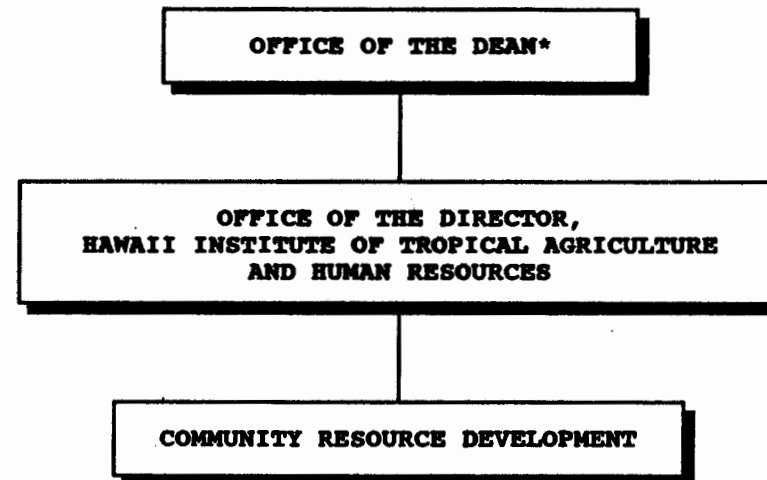
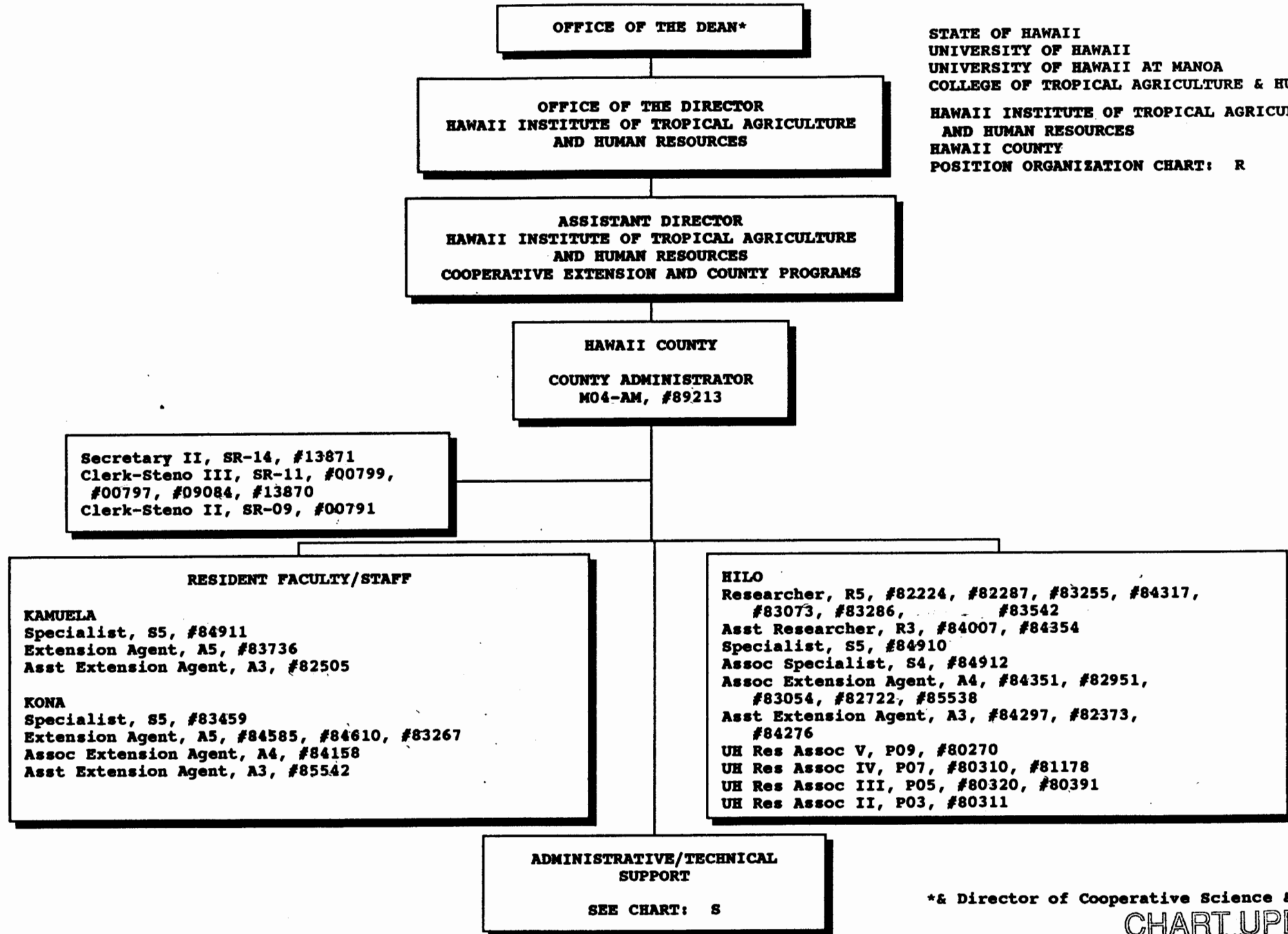


CHART UPDATED
JUN 30 1994
DATE _____

*& Director of Cooperative Science & Education



STATE OF HAWAII
UNIVERSITY OF HAWAII
UNIVERSITY OF HAWAII AT MANOA
COLLEGE OF TROPICAL AGRICULTURE & HUMAN RESOURCES
HAWAII INSTITUTE OF TROPICAL AGRICULTURE
AND HUMAN RESOURCES
HAWAII COUNTY
POSITION ORGANIZATION CHART: R

* & Director of Cooperative Science & Education

CHART UPDATED
JUN 30 1994
DATE _____

OFFICE OF THE DEAN*

OFFICE OF THE DIRECTOR
HAWAII INSTITUTE OF TROPICAL AGRICULTURE
AND HUMAN RESOURCES

ASSISTANT DIRECTOR
HAWAII INSTITUTE OF TROPICAL AGRICULTURE
AND HUMAN RESOURCES
COOPERATIVE EXTENSION AND COUNTY PROGRAMS

HAWAII COUNTY
OFFICE OF THE COUNTY ADMINISTRATOR

ADMINISTRATIVE/TECHNICAL SUPPORT
UH Administrative Officer III
P07, #80252

STATE OF HAWAII
UNIVERSITY OF HAWAII
UNIVERSITY OF HAWAII AT MANOA
COLLEGE OF TROPICAL AGRICULTURE AND HUMAN RESOURCES
HAWAII INSTITUTE OF TROPICAL AGRICULTURE
AND HUMAN RESOURCES
HAWAII COUNTY - TECHNICAL SUPPORT
POSITION ORGANIZATION CHART: 8

WEST HAWAII
Agr Res Tech VI, SR-18, #13530

MEALANI
Agr Res Tech V, SR-16, #13537, #13534
Agr Res Tech IV, SR-14, #14590
Agr Res Tech III, SR-11, #13709, #13710,
#13531, #12100, #44867, #44868

LALAMILO
Agr Res Tech V, SR-16, #13535
Agr Res Tech IV, SR-14, #00426

HAMAKUA
Agr Res Tech V, SR-16, #13711
Agr Res Tech III, SR-11, #13536

KONA
Agr Res Tech V, SR-16, #00409
Agr Res Tech IV, SR-14, #22912
Agr Res Tech III, SR-11, #00439

EAST HAWAII
Agr Res Tech VI, SR-18, #12099

WAIAKEA
Agr Res Tech V, SR-16, #12101, #12094
Agr Res Tech IV, SR-14, #12767, #14167, #12766,
#14166
Agr Res Tech III, SR-11, #17602, #13532, #12096,
#12098, #15497, #14168
Building Maintenance Worker I, WB-09, #12095

VOLCANO
Agr Res Tech V, SR-16, #13206
Agr Res Tech IV, SR-14, #12097

MALANA-KI
Agr Res Tech V, SR-16, #13205
Agr Res Tech III, SR-11, #12765

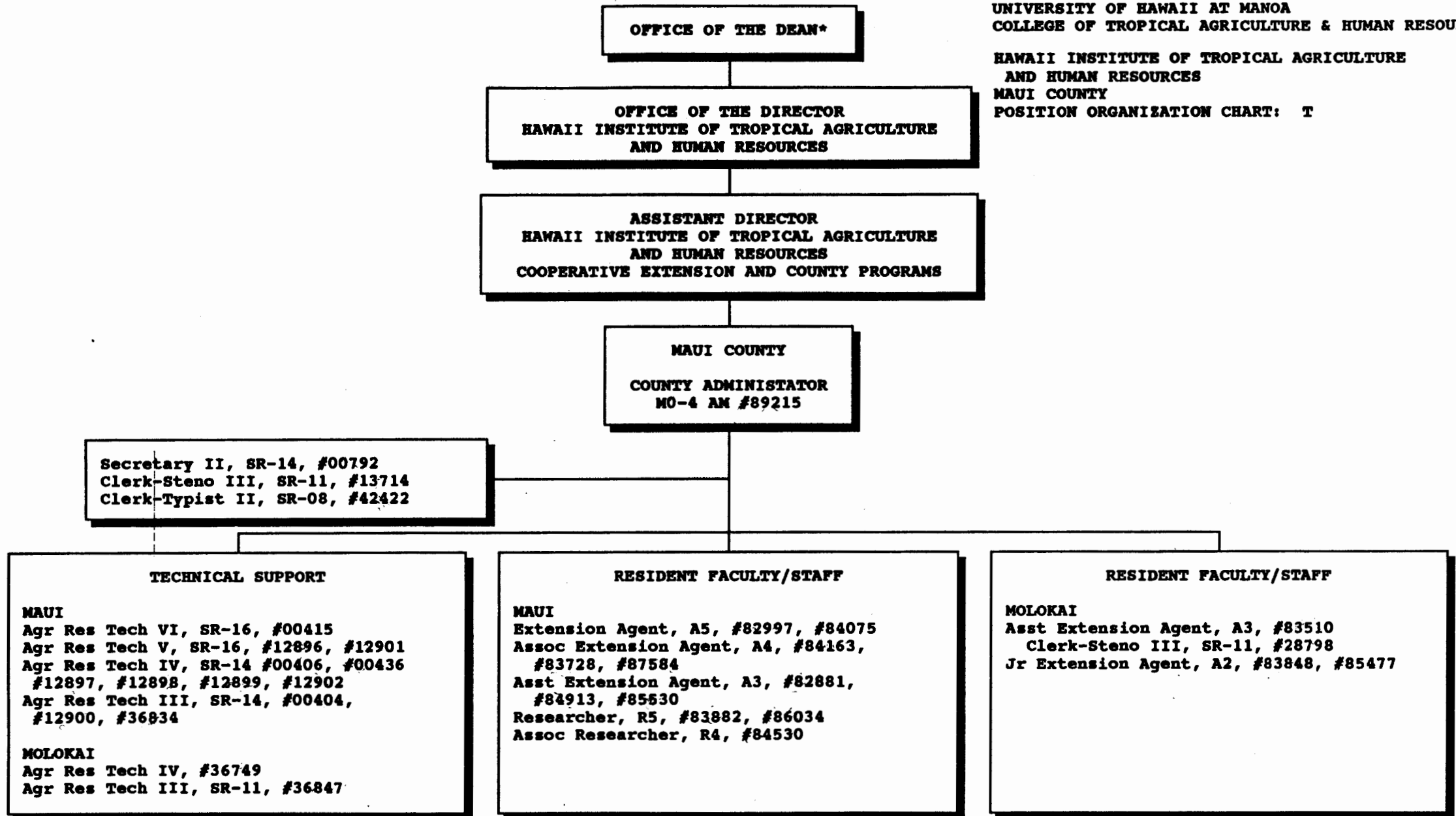
* & Director of Cooperative Science & Education

CHART UPDATED
DATE JUN 30 1994

STATE OF HAWAII
UNIVERSITY OF HAWAII
UNIVERSITY OF HAWAII AT MANOA
COLLEGE OF TROPICAL AGRICULTURE & HUMAN RESOURCES

HAWAII INSTITUTE OF TROPICAL AGRICULTURE
AND HUMAN RESOURCES
MAUI COUNTY

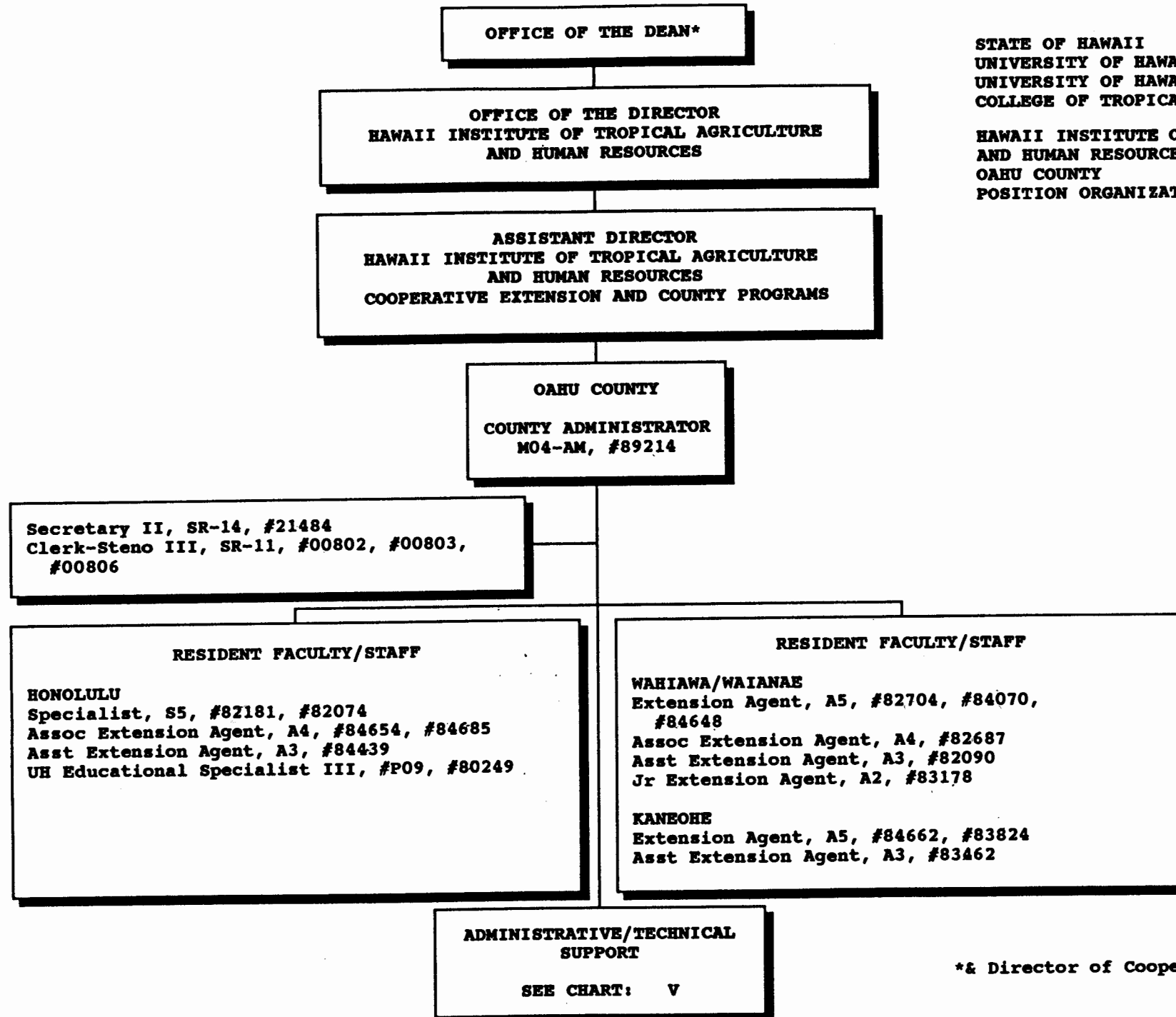
POSITION ORGANIZATION CHART: T



* & Director of Cooperative Science & Education

CHART UPDATED

DATE JUN 30 1994



STATE OF HAWAII
UNIVERSITY OF HAWAII
UNIVERSITY OF HAWAII AT MANOA
COLLEGE OF TROPICAL AGRICULTURE & HUMAN RESOURCES

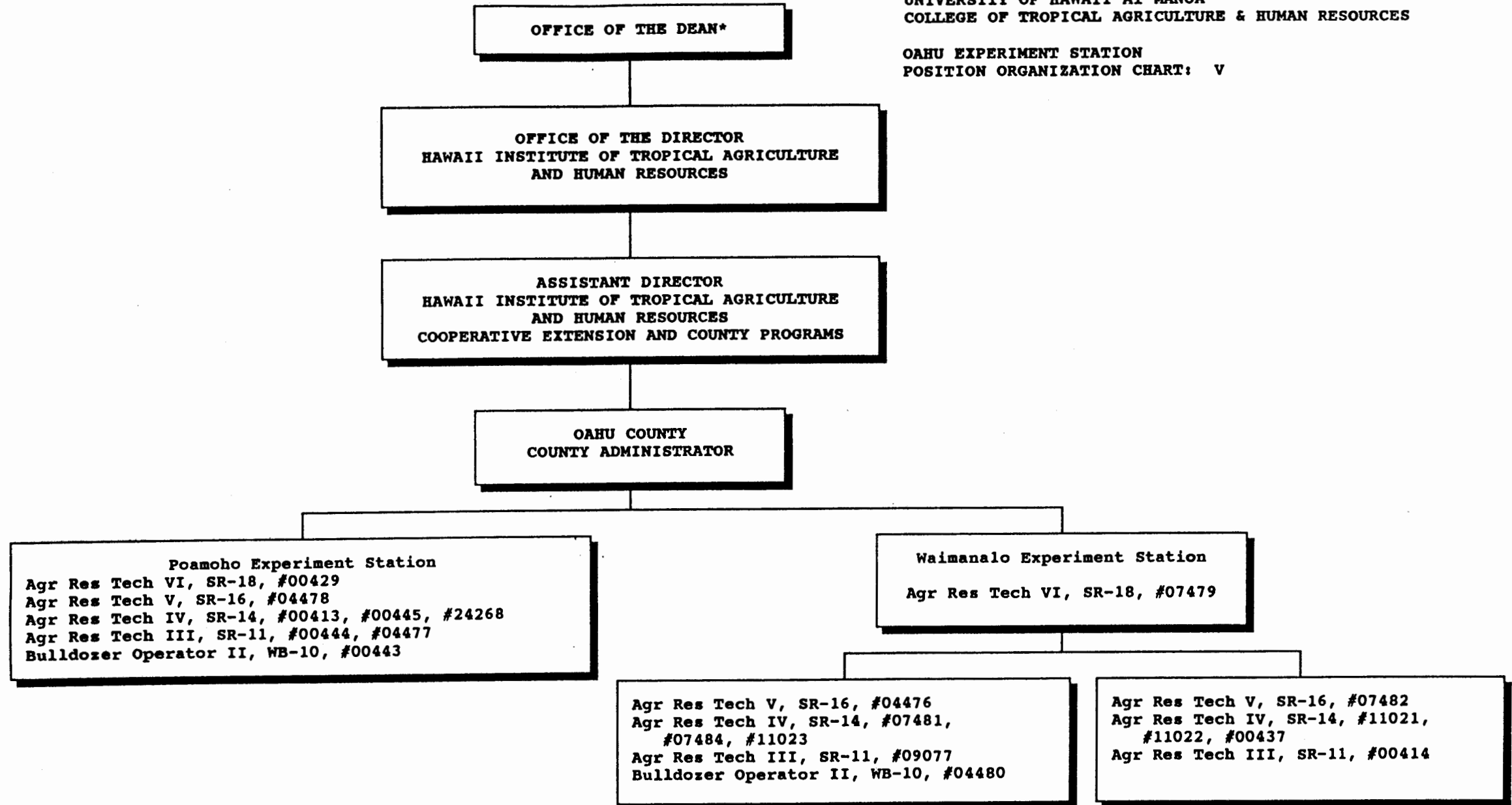
HAWAII INSTITUTE OF TROPICAL AGRICULTURE
AND HUMAN RESOURCES
OAHU COUNTY
POSITION ORGANIZATION CHART: U

* & Director of Cooperative Science & Education

CHART UPDATED
JUN 30 1994
DATE

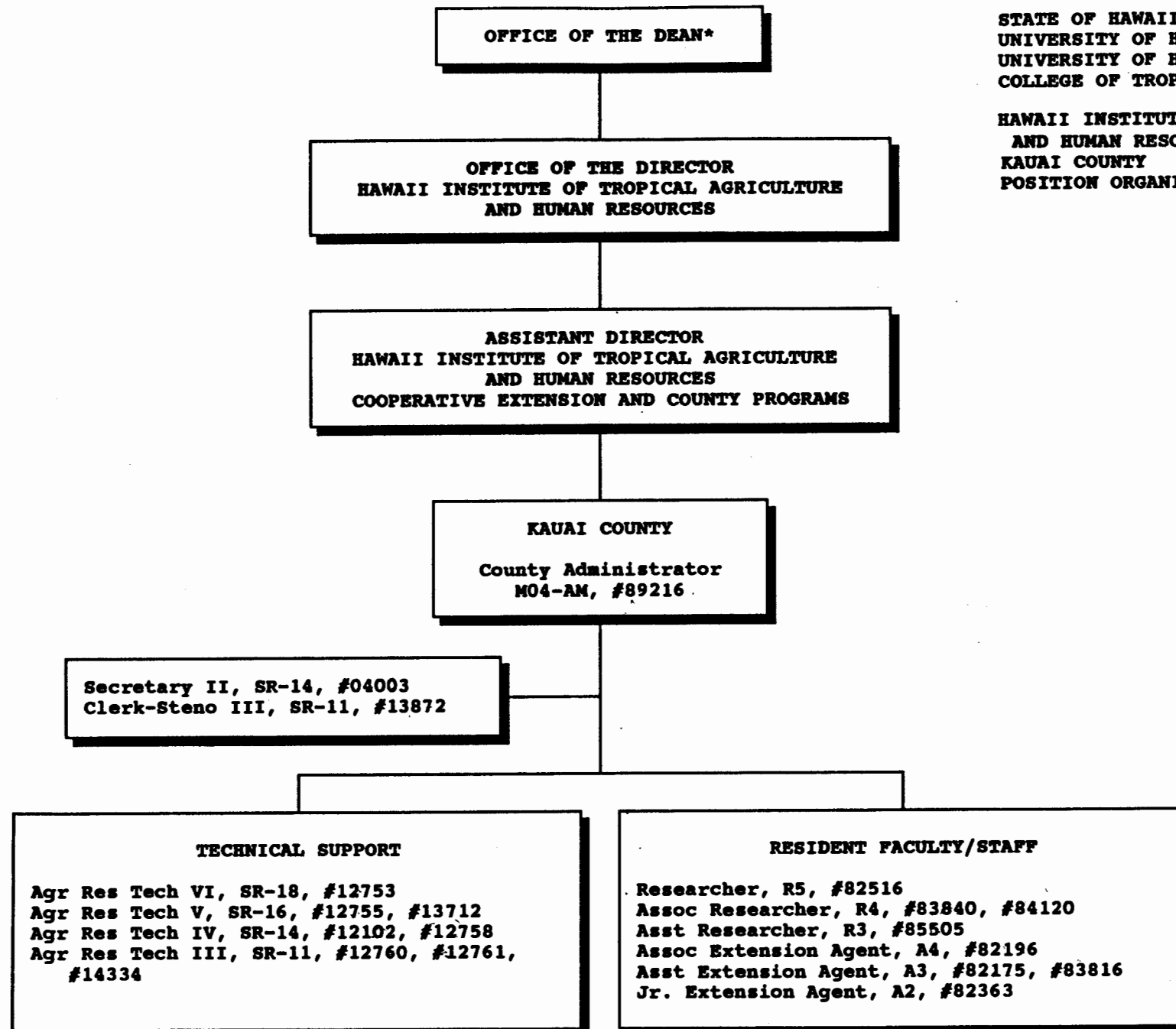
STATE OF HAWAII
UNIVERSITY OF HAWAII
UNIVERSITY OF HAWAII AT MANOA
COLLEGE OF TROPICAL AGRICULTURE & HUMAN RESOURCES

OAHU EXPERIMENT STATION
POSITION ORGANIZATION CHART: V



* & Director of Cooperative Science & Education

CHART UPDATED
JUN 30 1994
DATE



STATE OF HAWAII
UNIVERSITY OF HAWAII
UNIVERSITY OF HAWAII AT MANOA
COLLEGE OF TROPICAL AGRICULTURE & HUMAN RESOURCES

HAWAII INSTITUTE OF TROPICAL AGRICULTURE
AND HUMAN RESOURCES
KAUAI COUNTY
POSITION ORGANIZATION CHART: W

CHART UPDATED
DATE JUN 30 1994

* & Director of Cooperative Science & Education

STATE OF HAWAII
UNIVERSITY OF HAWAII
UNIVERSITY OF HAWAII AT MANOA
COLLEGE OF TROPICAL AGRICULTURE AND HUMAN RESOURCES

AGRICULTURAL DIAGNOSTIC SERVICE CENTER
POSITION ORGANIZATION CHART: X

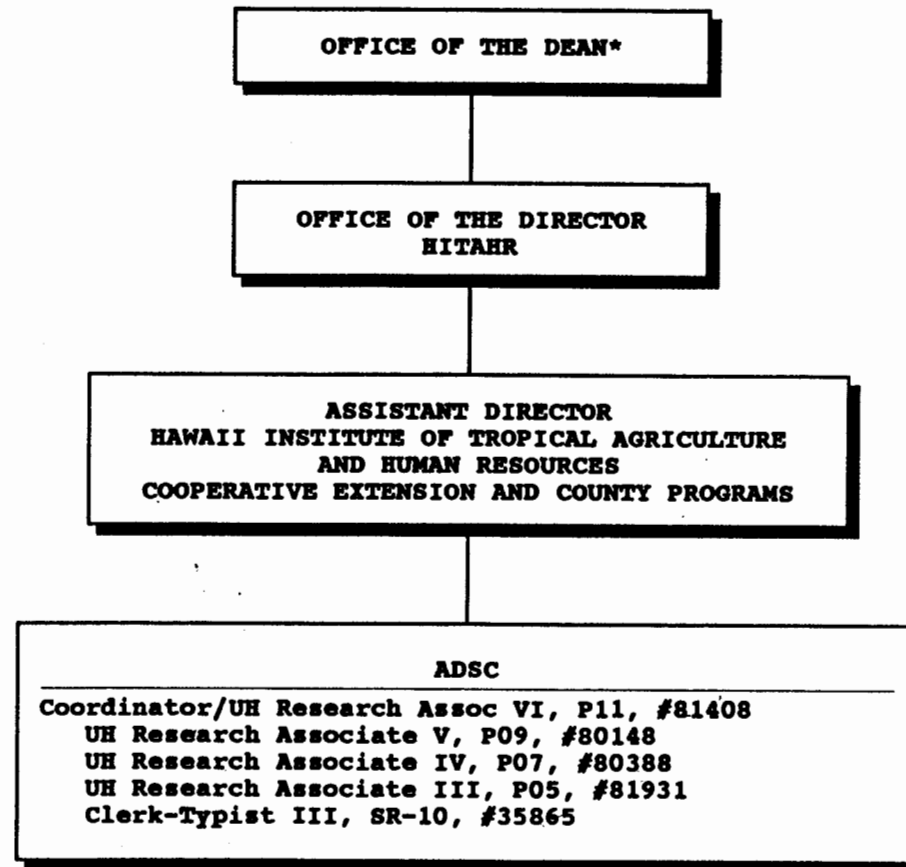


CHART UPDATED
DATE JUN 30 1994

*& Director of Cooperative Science & Education

STATE OF HAWAII
UNIVERSITY OF HAWAII
UNIVERSITY OF HAWAII AT MANOA
COLLEGE OF TROPICAL AGRICULTURE AND HUMAN RESOURCES

CENTER ON THE FAMILY
POSITION ORGANIZATION CHART: Y

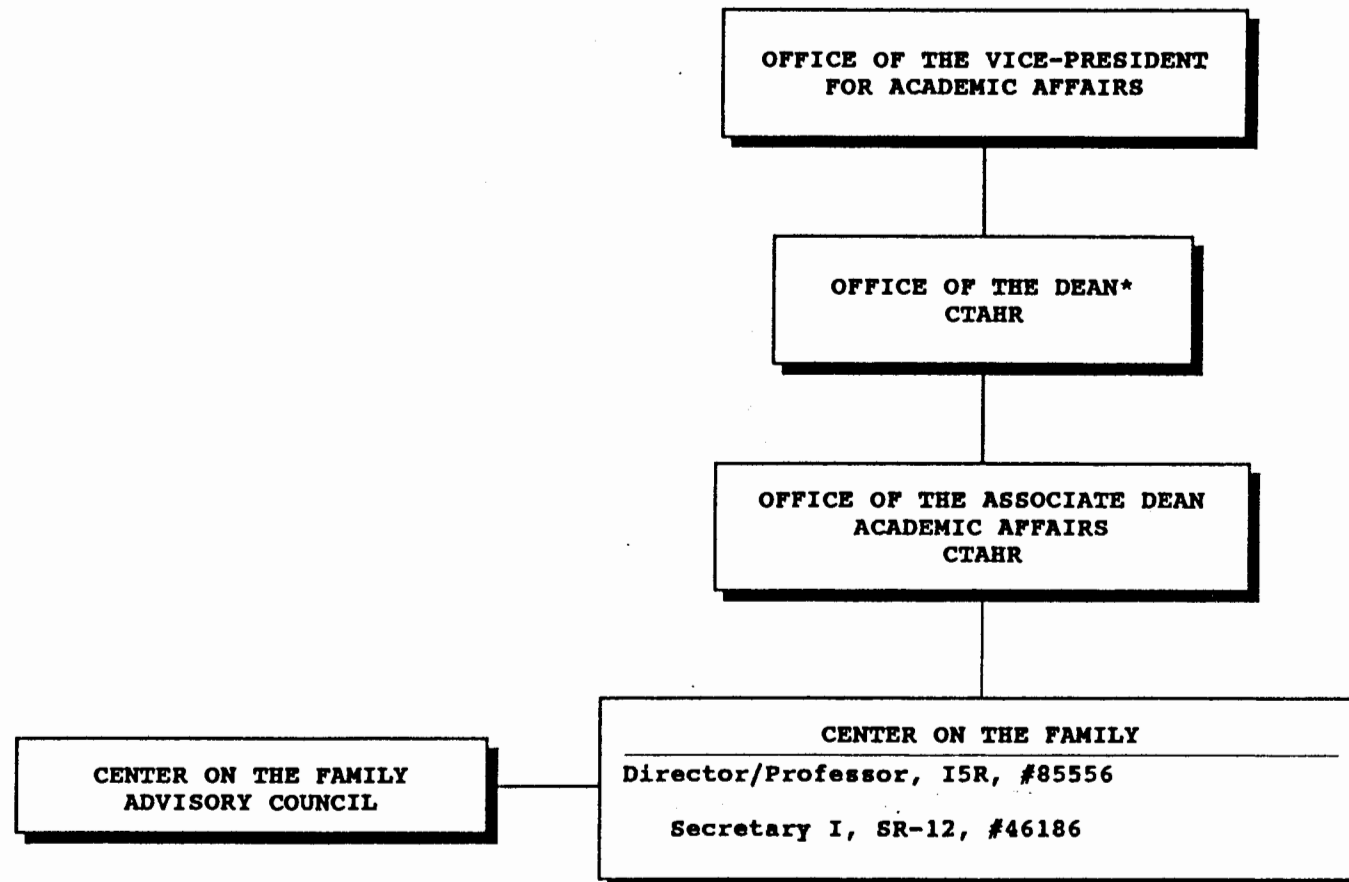


CHART UPDATED
DATE JUN 30 1994

* & Director of Cooperative Science & Education