

STATE OF HAWAII
UNIVERSITY OF HAWAII
SENIOR VICE PRESIDENT AND
CHANCELLOR FOR COMMUNITY COLLEGES

POSITION ORGANIZATION CHART

CHART I

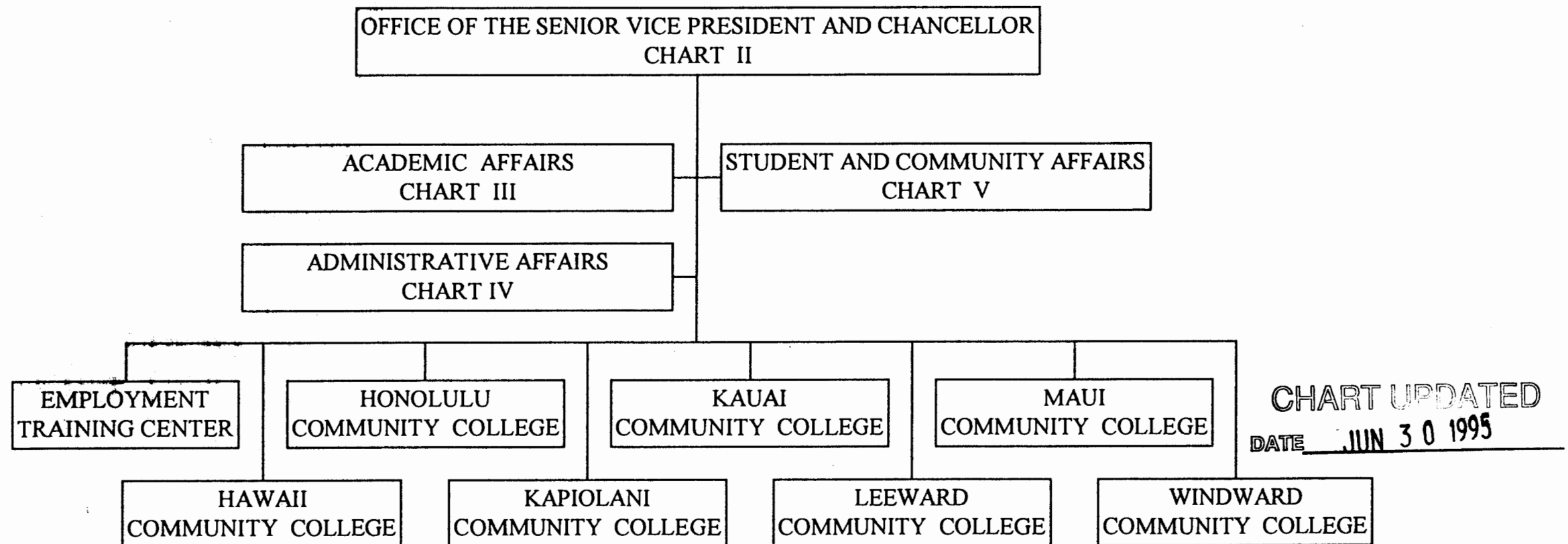


CHART UPDATED
DATE JUN 30 1995

STATE OF HAWAII
UNIVERSITY OF HAWAII
SENIOR VICE PRESIDENT AND
CHANCELLOR FOR COMMUNITY COLLEGES

POSITION ORGANIZATION CHART

CHART II

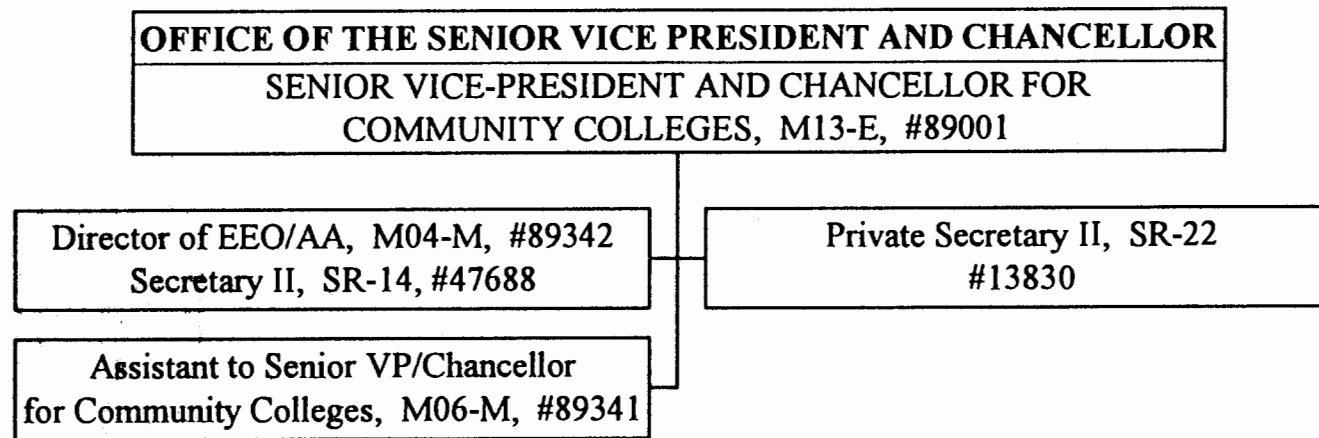


CHART UPDATED
General Funds 5.00 DATE JUN 30 1995

STATE OF HAWAII
UNIVERSITY OF HAWAII
SENIOR VICE PRESIDENT AND
CHANCELLOR FOR COMMUNITY COLLEGES

POSITION ORGANIZATION CHART

CHART III

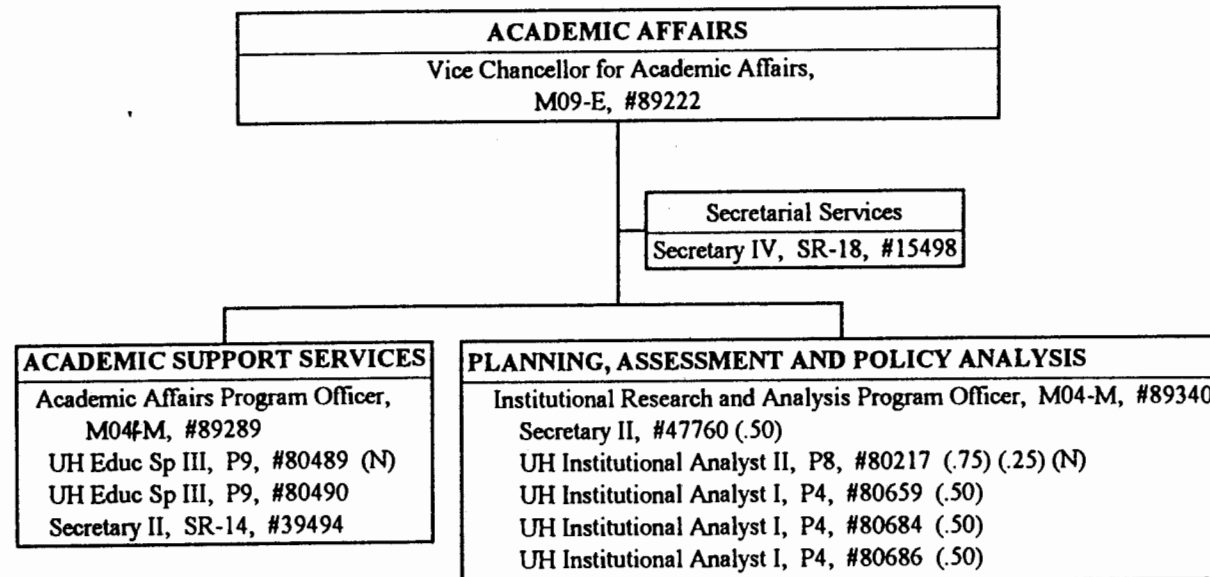


CHART UPDATED

DATE JUN 30 1995

General Funds 8.75
(N) Federal Funds 1.25

STATE OF HAWAII
UNIVERSITY OF HAWAII
SENIOR VICE PRESIDENT AND
CHANCELLOR FOR COMMUNITY COLLEGES

POSITION ORGANIZATION CHART

CHART IV

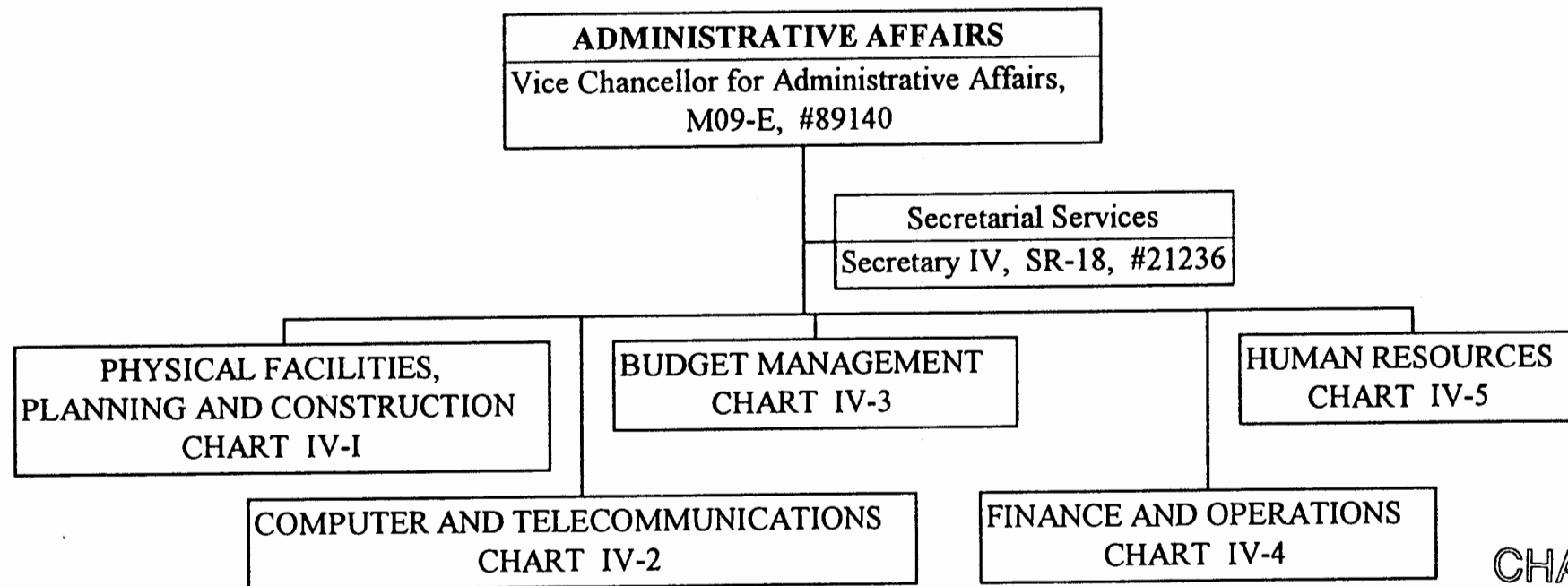


CHART UPDATED
DATE JUN 30 1995

General Funds 2.00

STATE OF HAWAII
UNIVERSITY OF HAWAII
SENIOR VICE PRESIDENT AND
CHANCELLOR FOR COMMUNITY COLLEGES

POSITION ORGANIZATION CHART

CHART IV-1

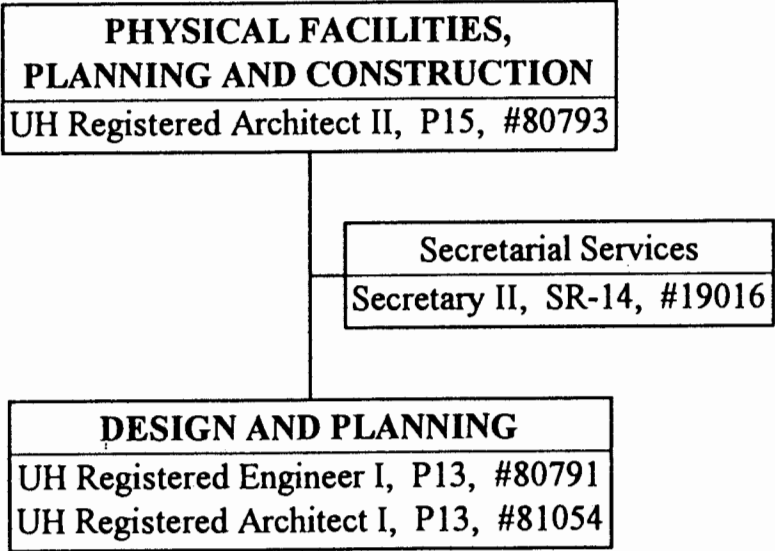


CHART UPDATED
DATE JUN 30 1995

General Funds 4.00

STATE OF HAWAII
UNIVERSITY OF HAWAII
SENIOR VICE PRESIDENT AND
CHANCELLOR FOR COMMUNITY COLLEGES

POSITION ORGANIZATION CHART

CHART IV-2

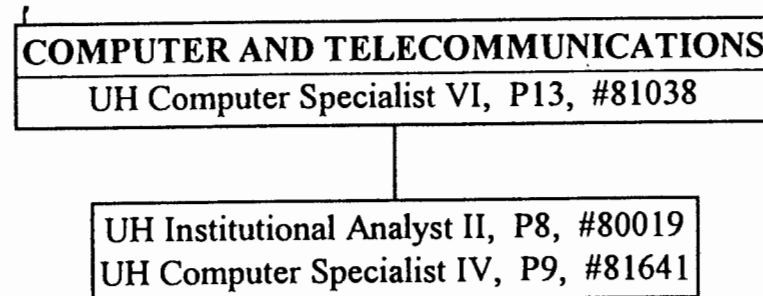


CHART UPDATED
DATE JUN 30 1995

General Funds 3.00

STATE OF HAWAII
UNIVERSITY OF HAWAII
SENIOR VICE PRESIDENT AND
CHANCELLOR FOR COMMUNITY COLLEGES

POSITION ORGANIZATION CHART

CHART IV-3

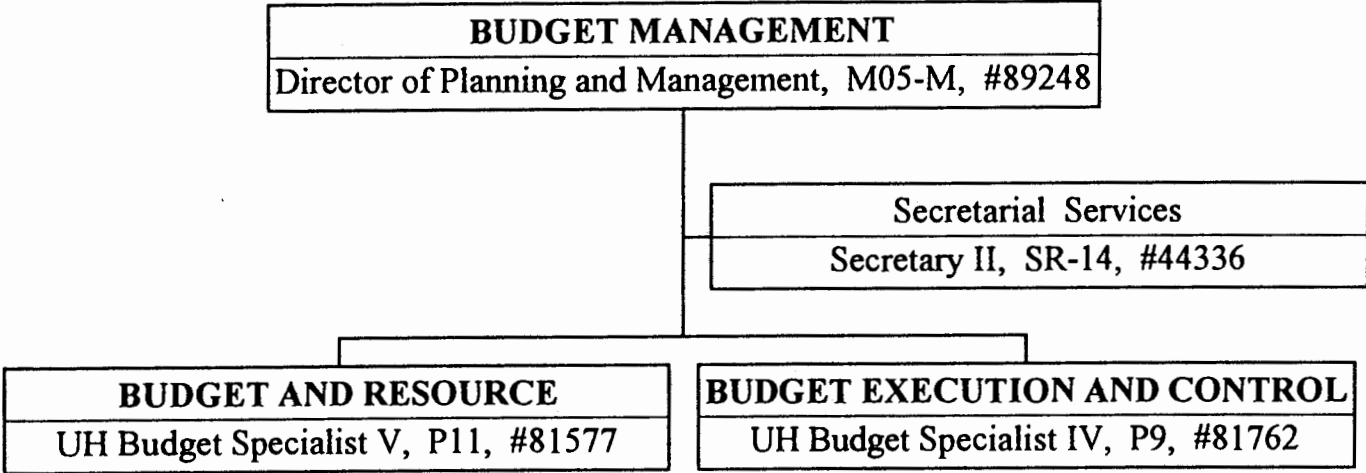


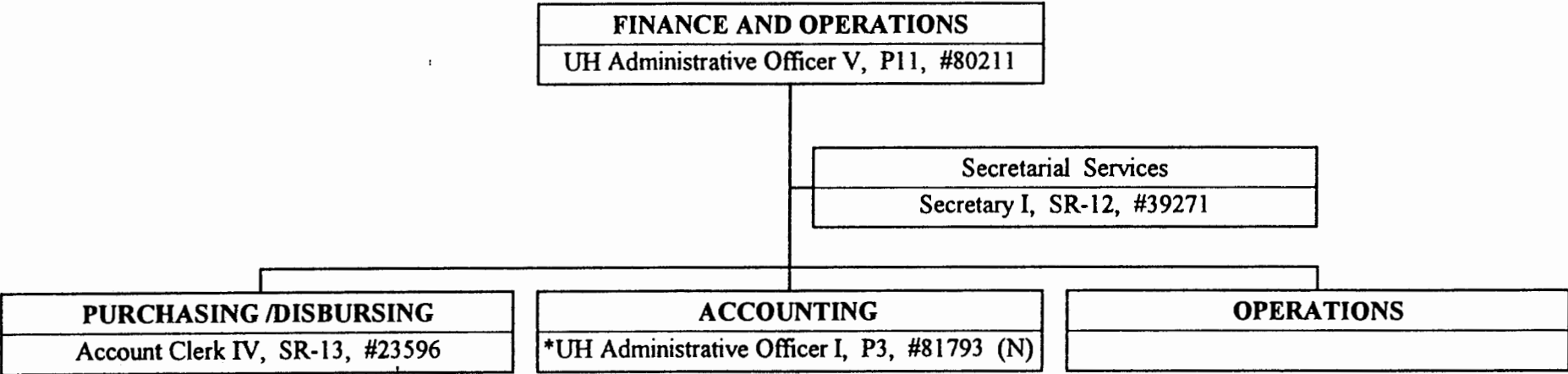
CHART UPDATED
JUN 30 1995
DATE _____

General Funds 4.00

STATE OF HAWAII
UNIVERSITY OF HAWAII
SENIOR VICE PRESIDENT AND
CHANCELLOR FOR COMMUNITY COLLEGES

POSITION ORGANIZATION CHART

CHART IV-4



* Temporary Position - Federal Funded

CHART UPDATED
DATE JUN 30 1995

General Funds 3.00

STATE OF HAWAII
UNIVERSITY OF HAWAII
SENIOR VICE PRESIDENT AND
CHANCELLOR FOR COMMUNITY COLLEGES

POSITION ORGANIZATION CHART

CHART IV-5

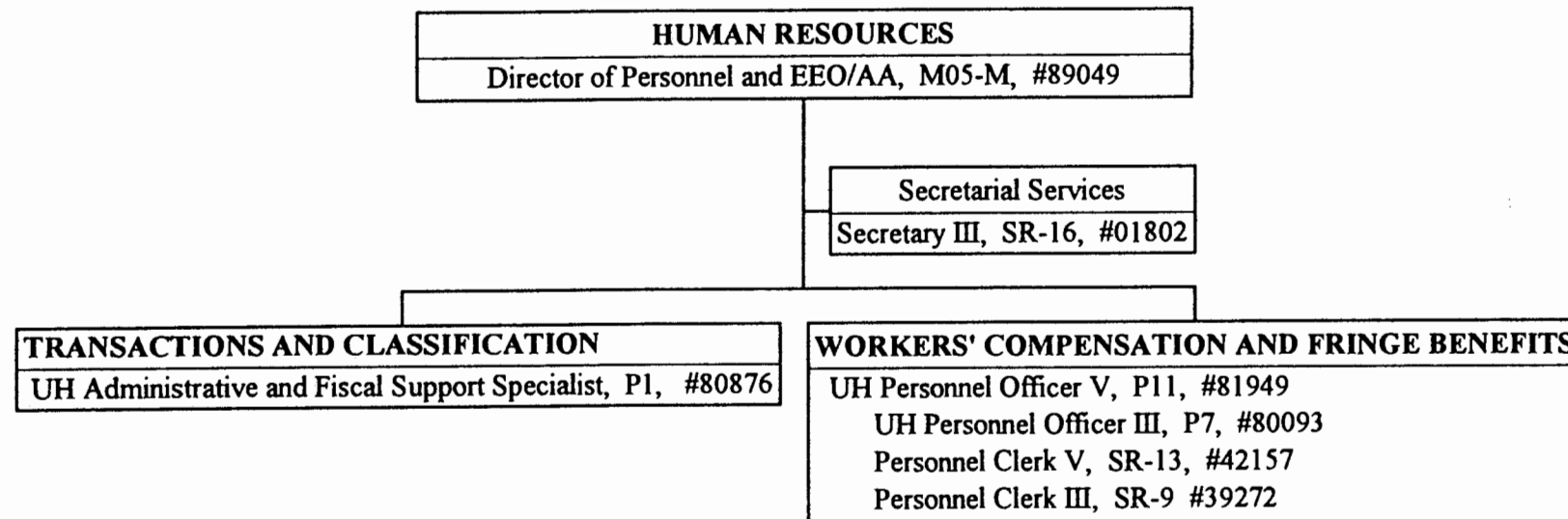


CHART UPDATED
DATE JUN 30 1995

General Funds 7.00

STATE OF HAWAII
UNIVERSITY OF HAWAII
SENIOR VICE PRESIDENT AND
CHANCELLOR FOR COMMUNITY COLLEGES

POSITION ORGANIZATION CHART

CHART V

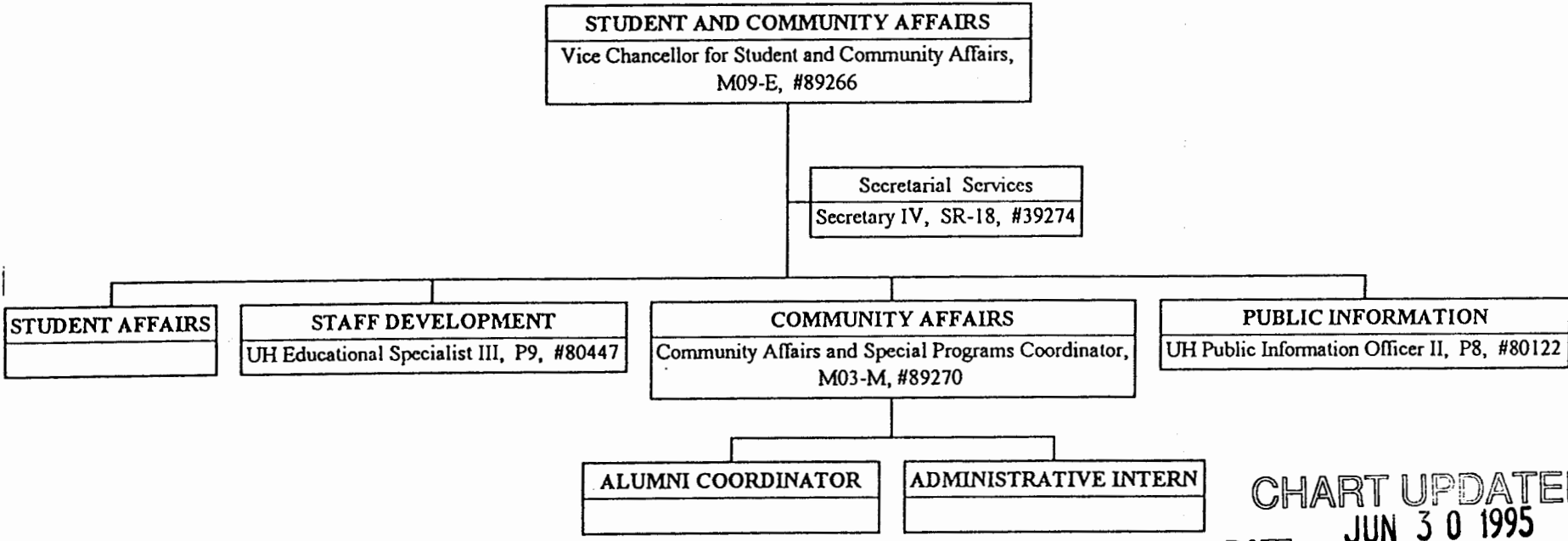


CHART UPDATED
DATE JUN 30 1995

General Funds 5.00