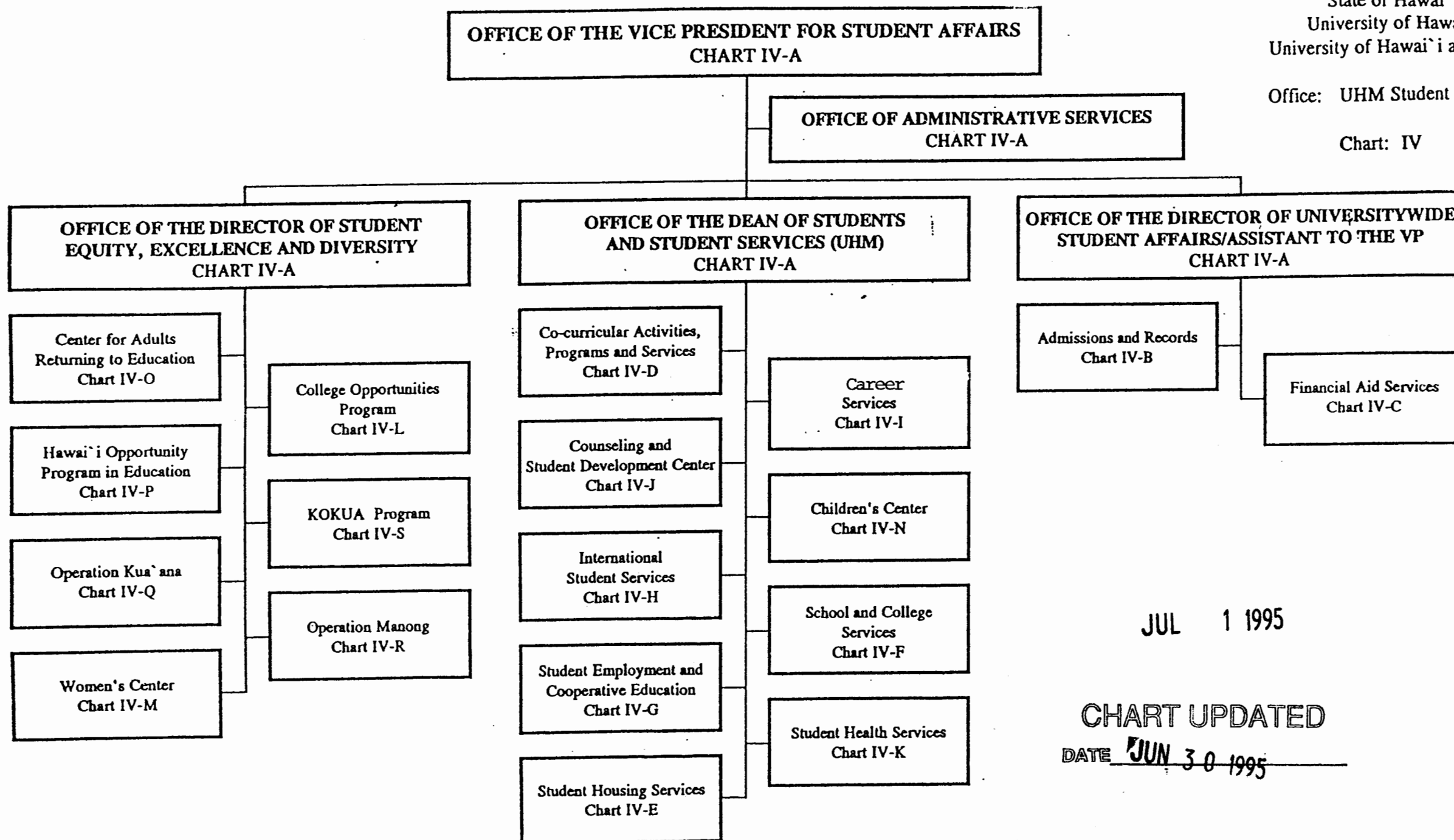


State of Hawai'i
University of Hawai'i
University of Hawai'i at Manoa

Office: UHM Student Services

Chart: IV



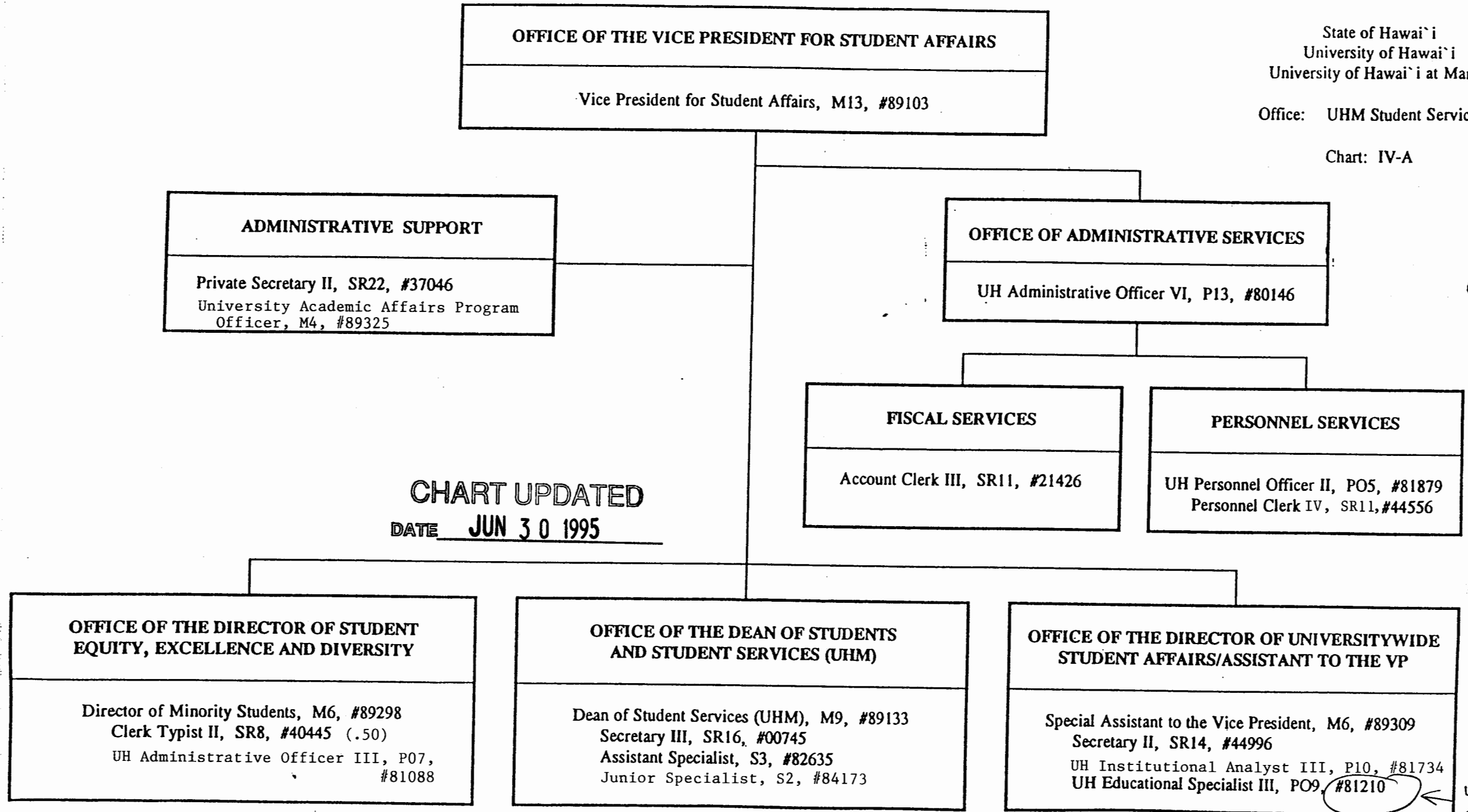
JUL 1 1995

CHART UPDATED
DATE JUN 30 1995

State of Hawai'i
University of Hawai'i
University of Hawai'i at Manoa

Office: UHM Student Services

Chart: IV-A



UHM
9-2

**OFFICE OF THE DIRECTOR OF UNIVERSITYWIDE
STUDENT AFFAIRS/ASSISTANT TO THE VP**

State of Hawai'i
University of Hawai'i
University of Hawai'i at Manoa

Office: UHM Student Services
Admissions and Records

Chart: IV-B

ADMISSIONS AND RECORDS

Specialist, S5, #82701

ADMINISTRATIVE SUPPORT

Secretary II, SR14, #00751
Specialist, S5, #83776
Secretary I, SR12, #14866

UH Student Services Specialist IV, P12, #81154 (.3)

CHART UPDATED
DATE JUN 30 1995

ADMISSIONS AND RESIDENCY

UH Student Services Specialist IV, P12, #81154 (.7)
Clerk Supervisor III, SR14, #00748
Clerk IV, SR10, #00772, #12550
#12842, #12843
#13495, #13496
#18009, #21427
UH Student Services Specialist III, P09, #80626
UH Student Services Specialist III, P09, #81414
UH Student Services Specialist III, P09, #80625
Clerk IV, SR10, #11496
Clerk IV, SR10, #26538
UH Educ & Acad Supp Sp, P01, #80530

RECORDS AND REGISTRATION

UH Student Services Specialist IV, P12, #81614
UH Student Services Specialist III, P09, #80658
Clerk Supervisor III, SR14, #17447
Clerk IV, SR10, #00750, #13959
#14863, #14864
#14865, #15502
#17450, #18010
#21430
Clerk III, SR8, #13494 (R)
Clerk III, SR8, #26539 (R)
Clerk Typist II, SR8, #40006
Scheduler, SR20, #05837

**INFORMATION AND
COMPUTER SERVICES**

UH Student Services Specialist IV, P12, #81070
UH Computer Specialist III, P07, #80017
UH Student Services Specialist I, P03, #81071
Clerk Supervisor II, SR12, #22322
Clerk IV, SR10, #40004
Clerk IV, SR10, #40005
Clerk-Stenographer II, SR9, #22321
Clerk III, SR8, #15501
Clerk III, SR8, #40003
UH Computer Specialist I, P03, #80018

**OFFICE OF THE DIRECTOR OF UNIVERSITYWIDE
STUDENT AFFAIRS/ASSISTANT TO THE VP**

State of Hawai`i
University of Hawai`i
University of Hawai`i at Manoa

Office: UHM Student Services
Financial Aid Services

Chart: IV-C

FINANCIAL AID SERVICES

Director of Financial Aid, M4, #89184

ADMINISTRATIVE SUPPORT

Secretary II, SR14, #05737

CHART UPDATED

DATE JUN 30 1995

PROGRAM SPECIALISTS

UH Student Services Specialist III, P09, #81913
UH Student Services Specialist II, P06, #81608
UH Student Services Specialist II, P06, #81607
UH Student Services Specialist II, P06, #81606
UH Student Services Specialist II, P06, #81609
UH Student Services Specialist II, P06, #81151
UH Student Services Specialist II, P06, #80922

DATA AND CLERICAL SUPPORT SECTION

Clerical Supervisor III, SR14, #17599
Clerk-Typist III, SR10, #16967
Clerk-Typist III, SR10, #15265
Clerk-Typist III, SR10, #17600
Clerk-Typist III, SR10, #10929
Clerk III, SR8, #44397

OFFICE OF THE DEAN OF STUDENTS AND STUDENT SERVICES (UHM)

CO-CURRICULAR ACTIVITIES, PROGRAMS & SERVICES

Director of Bureau of Student Activities, M4 #89190

State Of Hawai'i
University of Hawai'i
University of Hawai'i at Manoa

Office: UHM Student Services
Co-Curricular Activities,
Programs and Services

Chart: IV-D

ADMINISTRATIVE AND FISCAL SUPPORT

UH Administrative Officer III, P07, #80163 (R)
UH Adm/Fiscal Support Specialist, P01, #80649 (R)
Account Clerk IV, SR 13, #25700 (R)
Account Clerk II, SR08, #45362 (R)

CLERICAL SUPPORT

Secretary II, SR14, #13587
Clerk-Typist III, SR10, #28134 (R)
Clerk-Typist II, SR08, #25699 (R)
Clerk II, SR06, #25698 (R)

CHART UPDATED

DATE JUN 30 1995

INTRAMURAL SPORTS

Specialist, S5, #83512
Specialist, S5, #85083
Junior Specialist, S2, #83788
Clerk-Typist II, SR08, #26460

**STUDENT LEADERSHIP DEVELOPMENT
AND CO-CURRICULAR INTERVENTIONS
PROGRAMS**

Assistant Specialist, S3, #82864
Junior Specialist, S2, #83668
Junior Specialist, S2, #82573
Assistant Specialist, S3, #82597
UH Adm/Fiscal Support Specialist, P01, #81510 (R)
UH Student Services Specialist II, P06 #81374 (R)
UH Student Services Spec. II, P06, #80025 (R)
UH Publication Spec. III, P07, #81186 (R)
UH Adm/Fiscal Support Specialist, P01, #81137 (R)
Junior Specialist, S2, #88334 (R)

**OPERATIONAL PROGRAMS,
FACILITIES AND SERVICES**

UH Student Services Specialist III, P09, #80660 (R)
Building Maintenance Worker I, WB09, #28597 (R)
Janitor II, WB02, #25329 (R)
Janitor II, WB02, #25392 (R)
Janitor II, WB02, #44089 (R)
UH Student Services Specialist II, P06, #80631 (R)
UH Student Services Specialist I, P03, #80942 (R)
Junior Specialist, S2, #88765 (R)

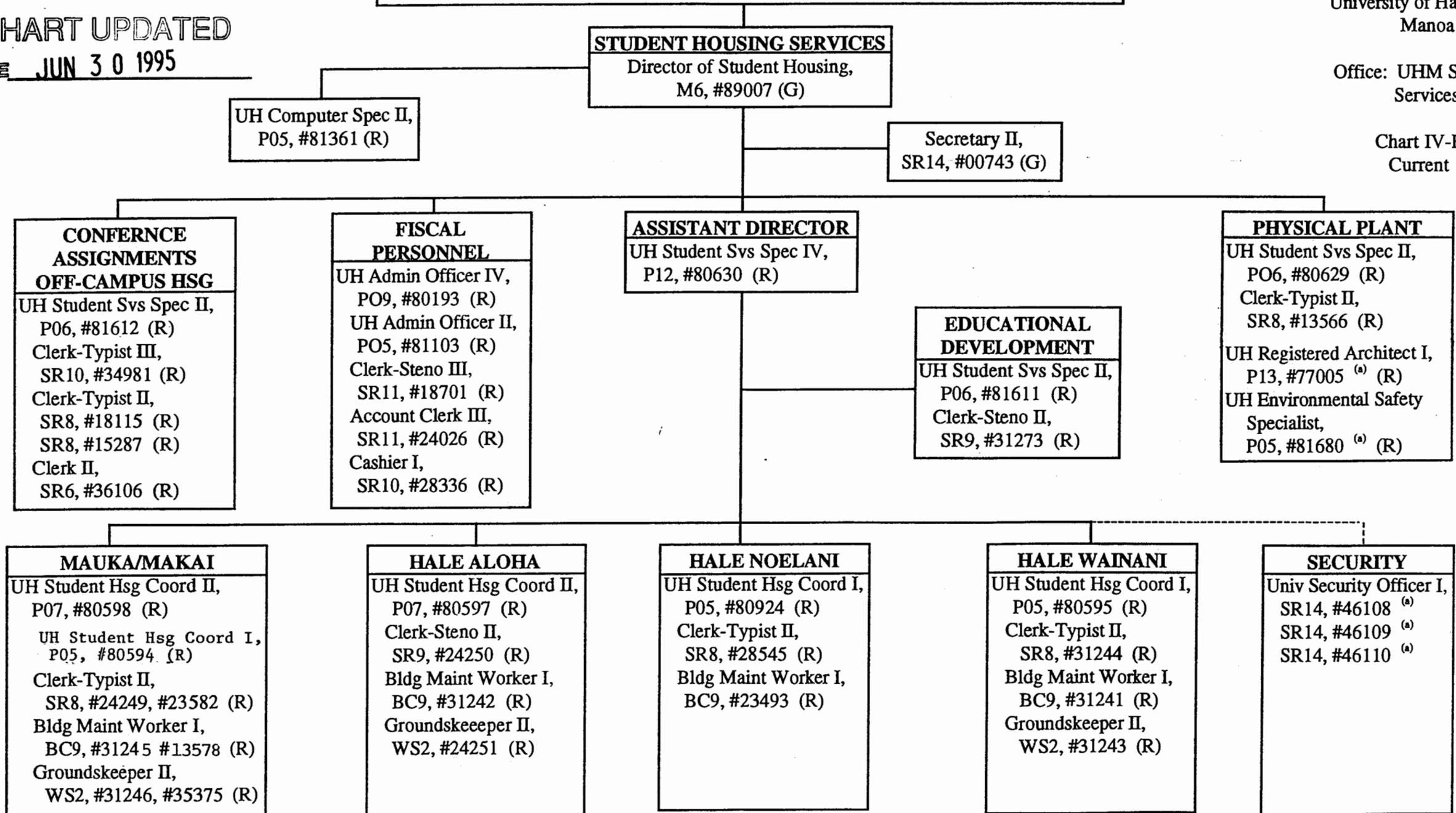
OFFICE OF THE DEAN OF STUDENTS AND STUDENT SERVICES

Exhibit II
State of Hawai'i
University of Hawai'i
University of Hawai'i at
Manoa

Office: UHM Student
Services

Chart IV-E
Current

CHART UPDATED
DATE JUN 30 1995



a) Student Housing Services position assigned to and supervised by Campus Operations

**OFFICE OF THE DEAN OF STUDENTS
AND STUDENT SERVICES (UHM)**

State of Hawai`i
University of Hawai`i
University of Hawai`i at Manoa

Office: UHM Student Services
School and College Services

Chart: IV-F

SCHOOL AND COLLEGE SERVICES

Specialist, S5, #82771

ADMINISTRATIVE SUPPORT

Secretary II, SR14, #25830

- Assistant Specialist, S3, #88147
Assistant Specialist, S3, #82637
UH Student Services Specialist II, P06, #81134
UH Student Services Specialist II, P06, #80463

CHART UPDATED
DATE JUN 30 1995

**OFFICE OF THE DEAN OF STUDENTS
AND STUDENT SERVICES (UHM)**

State of Hawai`i
University of Hawai`i
University of Hawai`i at Manoa

Office: UHM Student Services
Student Employment and
Cooperative Education

Chart: IV-G

STUDENT EMPLOYMENT AND COOPERATIVE EDUCATION

UH Student Services Specialist IV, P12, #80661

ADMINISTRATIVE SUPPORT

UH Student Services Specialist, #92573F (TBE)*,
(.50)

Secretary II, SR14, #11046
Clerk Typist, SR8, #46550

STUDENT EMPLOYMENT SERVICES

UH Student Services Specialist II, P06, #81063

UH Student Svcs Sp I, P03, #81481

UH Educ and Acad Support Spec, P01, #80453 T

* To Be Established

CHART UPDATED

DATE **JUN 30 1995**

COOPERATIVE EDUCATION

Junior Specialist, S2, #88117

Junior Specialist, S2, #88121 T

Junior Specialist, S2, #88145

Junior Specialist, S2, #82644

Junior Specialist, S2, #82642

**OFFICE OF THE DEAN OF STUDENTS
AND STUDENT SERVICES (UHM)**

State of Hawai`i
University of Hawai`i
University of Hawai`i at Manoa

Office: UHM Student Services
International Student Services

Chart: IV-H

INTERNATIONAL STUDENT SERVICES

Assistant Specialist, S3, #84594

ADMINISTRATIVE SUPPORT

Secretary II, SR14, #00763

Clerk-Stenographer II, SR9, #12763

Junior Specialist, S2, #88126

Junior Specialist, S2, #83747

Junior Specialist, S2, #88327

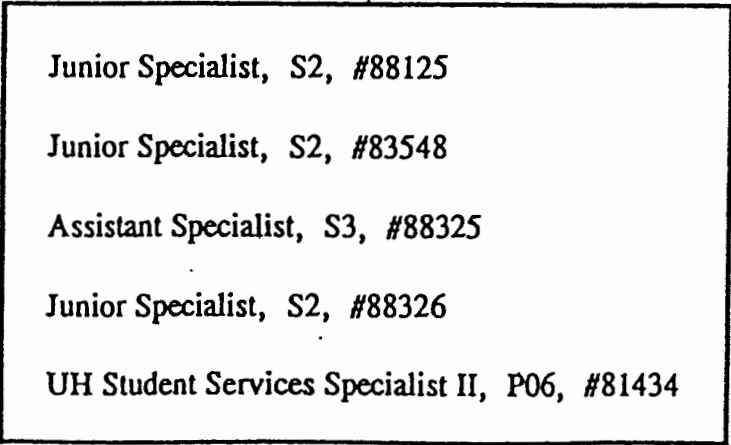
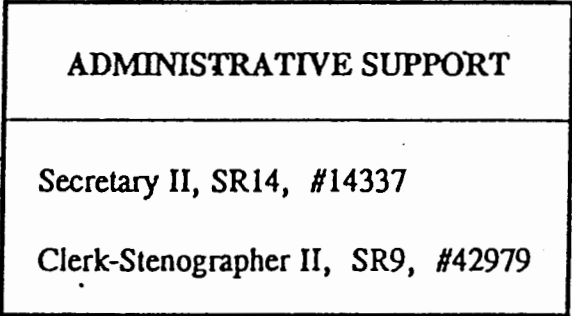
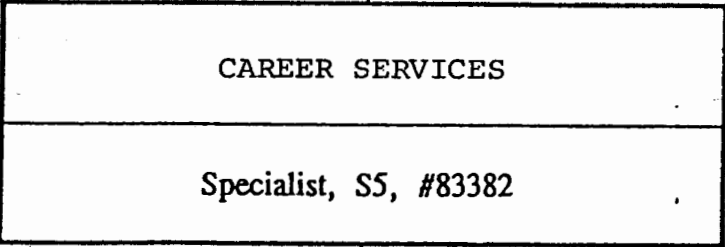
CHART UPDATED
DATE JUN 30 1995

**OFFICE OF THE DEAN OF STUDENTS
AND STUDENT SERVICES (UHM)**

State of Hawai`i
University of Hawai`i
University of Hawai`i at Manoa

Office: UHM Student Services
Career Services

Chart: IV-I



JUL 1 1995

**OFFICE OF THE DEAN OF STUDENTS
AND STUDENT SERVICES (UHM)**

State of Hawai`i
University of Hawai`i
University of Hawai`i at Manoa

Office: UHM Student Services
Counseling and Student
Development Center

Chart: IV-J

**COUNSELING AND STUDENT
DEVELOPMENT CENTER**

Specialist, S5, #83151

ADMINISTRATIVE SUPPORT

Secretary II, SR14, #00746
Clerk Typist II, SR8, #15354
Clerk Typist II, SR8, #48942

CHART UPDATED
DATE JUN 30 1995

LEARNING ASSISTANCE

Assistant Specialist, S3, #84554
Assistant Specialist, S3, #88143

TESTING

UH Student Services Specialist II, P06, #80632

COUNSELING

Specialist, S5, #82048 (.50)
Specialist, S5, #83635 (.50)
Specialist, S5, #82695
Associate Specialist, S4, #82698
Assistant Specialist, S3, #83035
Assistant Specialist, S3, #83114
Associate Specialist, S4, #84139

**OFFICE OF THE DEAN OF STUDENTS
AND STUDENT SERVICES (UHM)**

STUDENT HEALTH SERVICES

Specialist, S5, #82341

ADMINISTRATIVE SUPPORT

Assistant Specialist, S3, #83539
Secretary II, SR14, #15353
Account Clerk III, SR11, #21512
Medical Records Technician VI, SR13, #03723
Clerk-Typist II, SR8, #35147 (.50)

CHART UPDATED

DATE JUN 30 1995

MEDICAL STAFF

Specialist, S5, #84576 (.50)
Specialist, S5, #84576A (.50)
Specialist, S5, #83261 (.50)
Specialist, S5, #83397 (.50)
Specialist, S5, #84581 (.50)

NURSING STAFF

Registered Professional Nurse IV,
SR22, #10312
Registered Professional Nurse III,
SR20, #13616
Registered Professional Nurse III,
SR20, #13614
Registered Professional Nurse III,
SR20, #22672
Registered Professional Nurse III,
SR20, #13615
Registered Professional Nurse III,
SR20, #18091
Registered Professional Nurse III,
SR20, #13730 (.50)

FAMILY PLANNING CLINIC

Registered Professional Nurse V,
SR24, #41706

LABORATORY

UH Medical Technician,
P07, #80671 (.50)

**OFFICE OF THE DIRECTOR OF STUDENT
EQUITY, EXCELLENCE AND DIVERSITY**

State of Hawai'i
University of Hawai'i
University of Hawai'i at Manoa

Office: UHM Student Services
College Opportunities Program

Chart: IV-L

COLLEGE OPPORTUNITIES PROGRAM
UH Educational Specialist IV, P12, #80582

ADMINISTRATIVE SUPPORT
Secretary II, SR14, #23086

- UH Student Services Specialist II, P06, #80628
- UH Student Services Specialist II, P06, #81736 (.50)
- UH Student Services Specialist I, P03, #80606

CHART UPDATED
JUN 30 1995
DATE _____

State of Hawai'i
University of Hawai'i
University of Hawai'i at Manoa

Office: UHM Student Services
Women's Center

Chart: IV-M

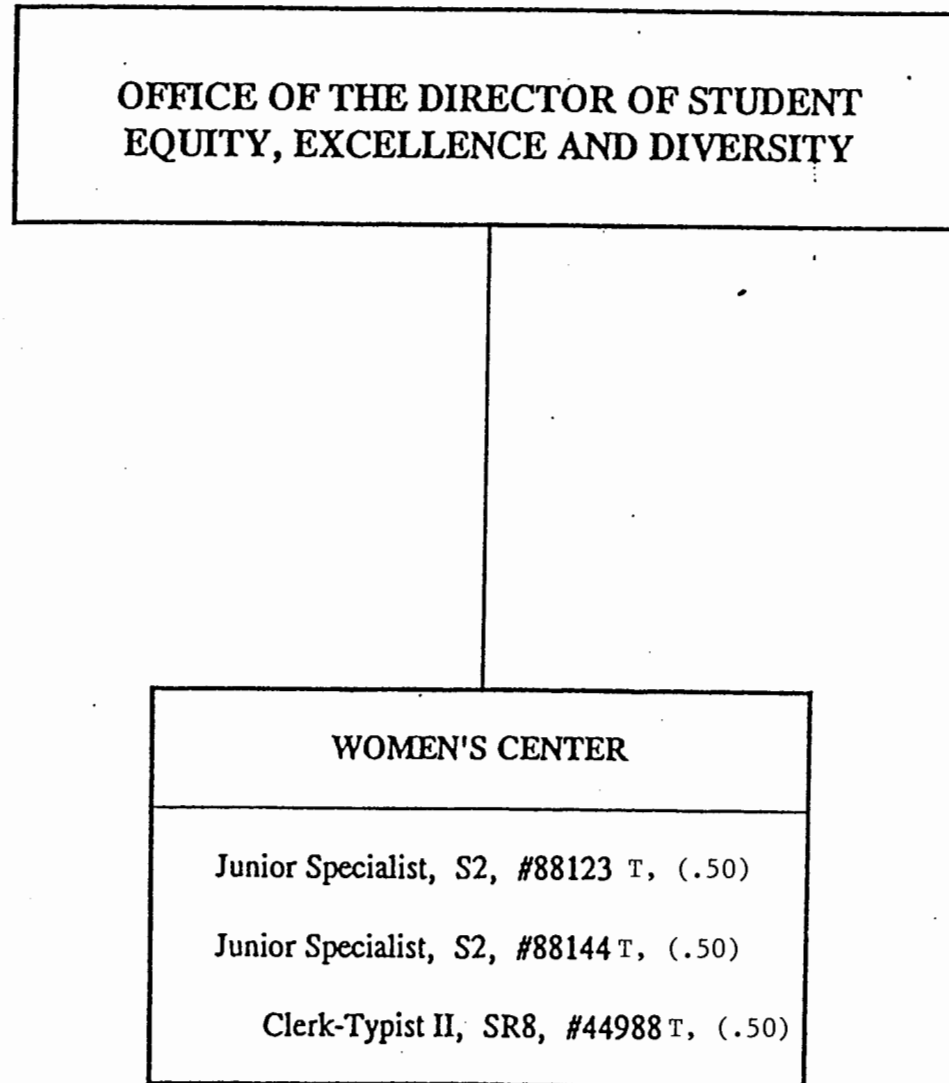


CHART UPDATED
JUN 30 1995
DATE _____

**OFFICE OF THE DEAN OF STUDENTS
AND STUDENT SERVICES (UHM)**

State of Hawai`i
University of Hawai`i
University of Hawai`i at Manoa

Office: UHM Children's Center

Chart: IV-N

CHILDREN'S CENTER

Specialist, S5, #88318

ADMINISTRATIVE SUPPORT

UH Early Childhood Spec IV, P07, #80232

TEACHING STAFF

UH Educational Associate IV, P09, #80029
UH Educational Associate III, P07, #80109
UH Educational Associate III, P07, #80496T(.75)
UH Educational Associate I, P03, #80233
UH Educational Associate II, P05, #80234T
UH Educational Associate I, P03, #80424T
UH Early Childhood Spec III, P05,
#80455T

CHART UPDATED
JUN 30 1995

DATE

State of Hawai`i
University of Hawai`i
University of Hawai`i at Manoa

Office: UHM Student Services
Center for Adults
Returning to Education

Chart: IV-O

**OFFICE OF THE DIRECTOR OF STUDENT
EQUITY, EXCELLENCE AND DIVERSITY**

**CENTER FOR ADULTS
RETURNING TO EDUCATION**

Assistant Specialist, S3, #88317
Junior Specialist, S2, #88762
Clerk Typist II, SR8, #43364 (.50)

CHART UPDATED
DATE JUN 30 1995

State of Hawai`i
University of Hawai`i
University of Hawai`i at Manoa

Office: UHM Student Services
Hawai`i Opportunity
Program in Education

Chart: IV-P

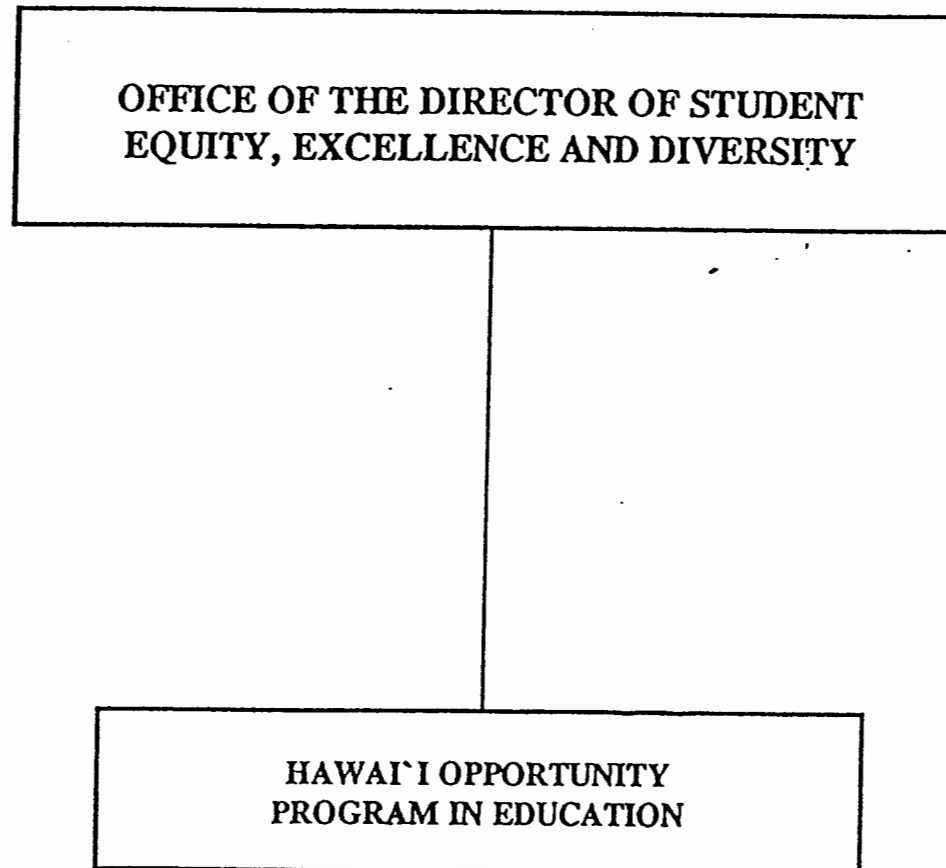


CHART UPDATED
DATE JUN 30 1995

State of Hawai`i
University of Hawai`i
University of Hawai`i at Manoa

Office: UHM Student Services
Operation Kua`ana

Chart: IV-Q

**OFFICE OF THE DIRECTOR OF STUDENT
EQUITY, EXCELLENCE AND DIVERSITY**

OPERATION KUA`ANA

UH Educational Specialist III, P09, #81904

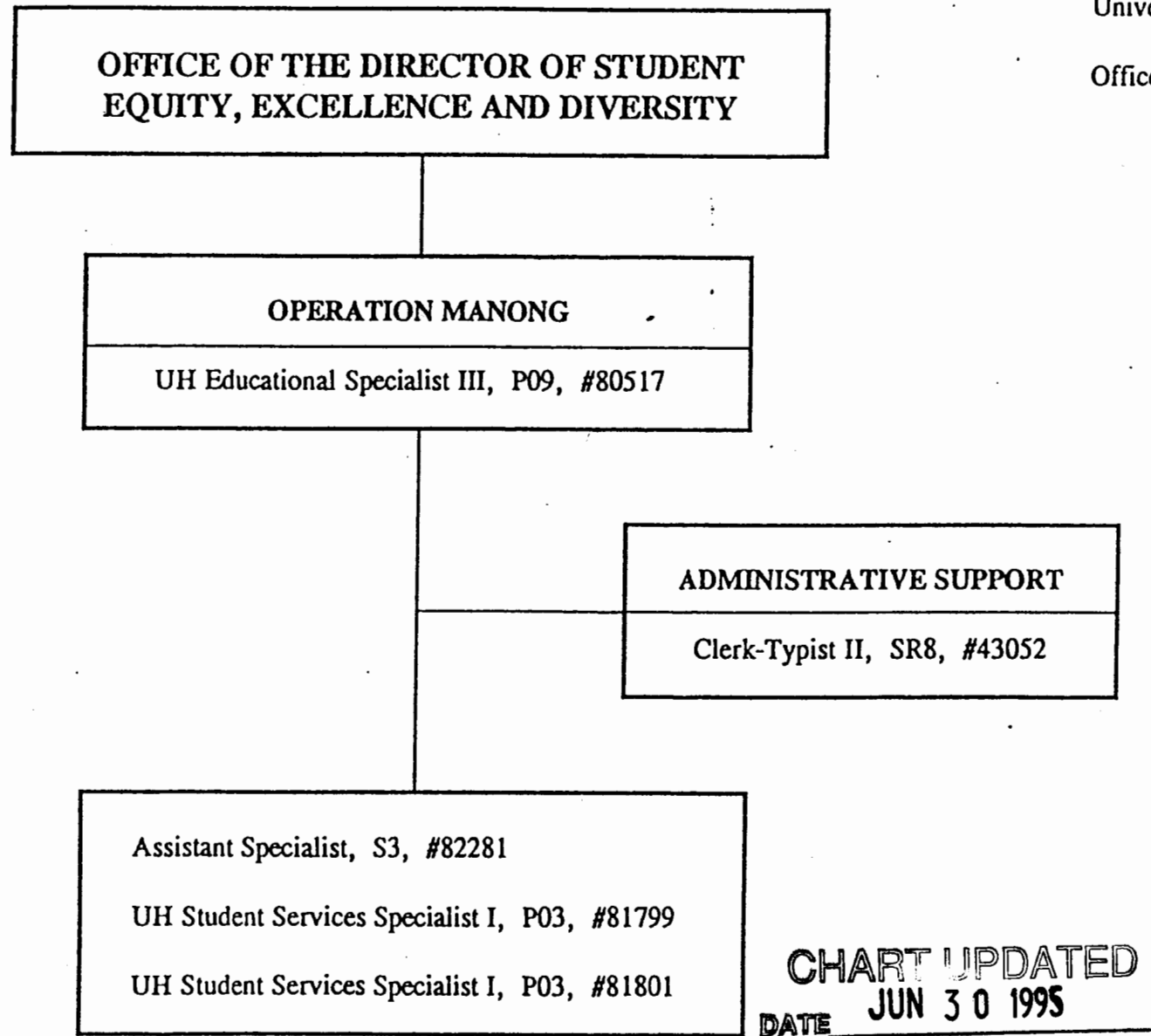
UH Student Services Specialist I, P03, 81919

CHART UPDATED
JUN 30 1995
DATE _____

State of Hawai`i
University of Hawai`i
University of Hawai`i at Manoa

Office: UHM Student Services
Operation Manong

Chart: IV-R



**OFFICE OF THE DIRECTOR OF STUDENT
EQUITY, EXCELLENCE AND DIVERSITY**

State of Hawai`i
University of Hawai`i
University of Hawai`i at Manoa

Office: UHM Student Services
KOKUA Program

Chart IV-S

KOKUA PROGRAM
Educational Specialist III, P09, #80666

Educational Specialist I, P03, #80636
Educational Specialist I, P03, #80608
Educational Specialist II, P06, #81566
Clerk Typist III, SR10, #42421
UH Educational Specialist, #92569F*

CHART UPDATED
DATE JUN 30 1995

*To Be Established

State of Hawai'i
University of Hawai'i
University of Hawai'i at Manoa

Office: UHM Student Services

Chart: IV

**OFFICE OF THE VICE PRESIDENT FOR STUDENT AFFAIRS
CHART IV-A**

**OFFICE OF ADMINISTRATIVE SERVICES
CHART IV-A**

**OFFICE OF THE DIRECTOR OF STUDENT
EQUITY, EXCELLENCE AND DIVERSITY
CHART IV-A**

Center for Adults
Returning to Education
Chart IV-O

Hawai'i Opportunity
Program in Education
Chart IV-P

Operation Kua'ana
Chart IV-Q

Women's Center
Chart IV-M

College Opportunities
Program
Chart IV-L

KOKUA Program
Chart IV-S

Operation Manong
Chart IV-R

**OFFICE OF THE DEAN OF STUDENTS
AND STUDENT SERVICES (UHM)
CHART IV-A**

Co-curricular Activities,
Programs and Services
Chart IV-D

Counseling and
Student Development Center
Chart IV-J

International
Student Services
Chart IV-H

Student Employment and
Cooperative Education
Chart IV-G

Student Housing Services
Chart IV-E

Career Placement
Services
Chart IV-I

Children's Center
Chart IV-N

School and College
Services
Chart IV-F

Student Health Services
Chart IV-K

**OFFICE OF THE DIRECTOR OF UNIVERSITYWIDE
STUDENT AFFAIRS/ASSISTANT TO THE VP
CHART IV-A**

Admissions and Records
Chart IV-B

Financial Aid Services
Chart IV-C

SUPERSEDED
Date JUL 1 1995

**OFFICE OF THE DEAN OF STUDENTS
AND STUDENT SERVICES (UHM)**

State of Hawai`i
University of Hawai`i
University of Hawai`i at Manoa

Office: UHM Student Services
Career Placement Services

Chart: IV-I

CAREER PLACEMENT SERVICES

Specialist, S5, #83382

ADMINISTRATIVE SUPPORT

Secretary II, SR14, #14337

Clerk-Stenographer II, SR9, #42979

- Junior Specialist, S2, #88125
- Junior Specialist, S2, #83548
- Assistant Specialist, S3, #88325
- Junior Specialist, S2, #88326
- UH Student Services Specialist II, P06, #81434

SUPERSEDED
Date JUL 1 1995

CHART UPDATED
DATE JUN 30 1995