

STATE OF HAWAII
UNIVERSITY OF HAWAII
UNIVERSITY OF HAWAII AT MANOA

INTERCOLLEGIATE ATHLETICS

CHART IV

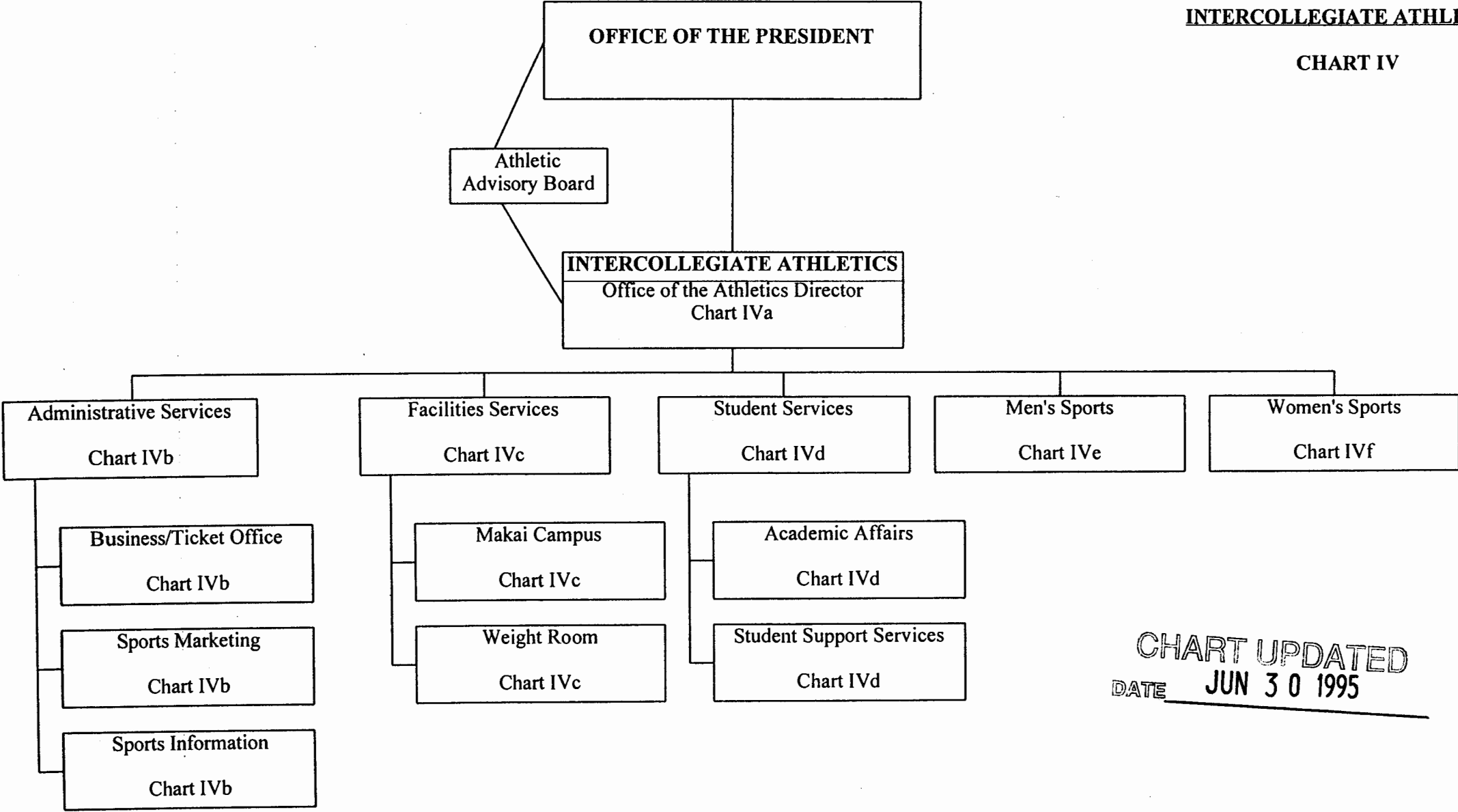


CHART UPDATED
DATE JUN 30 1995

STATE OF HAWAII
UNIVERSITY OF HAWAII
UNIVERSITY OF HAWAII AT MANOA

INTERCOLLEGIATE ATHLETICS

CHART IVa

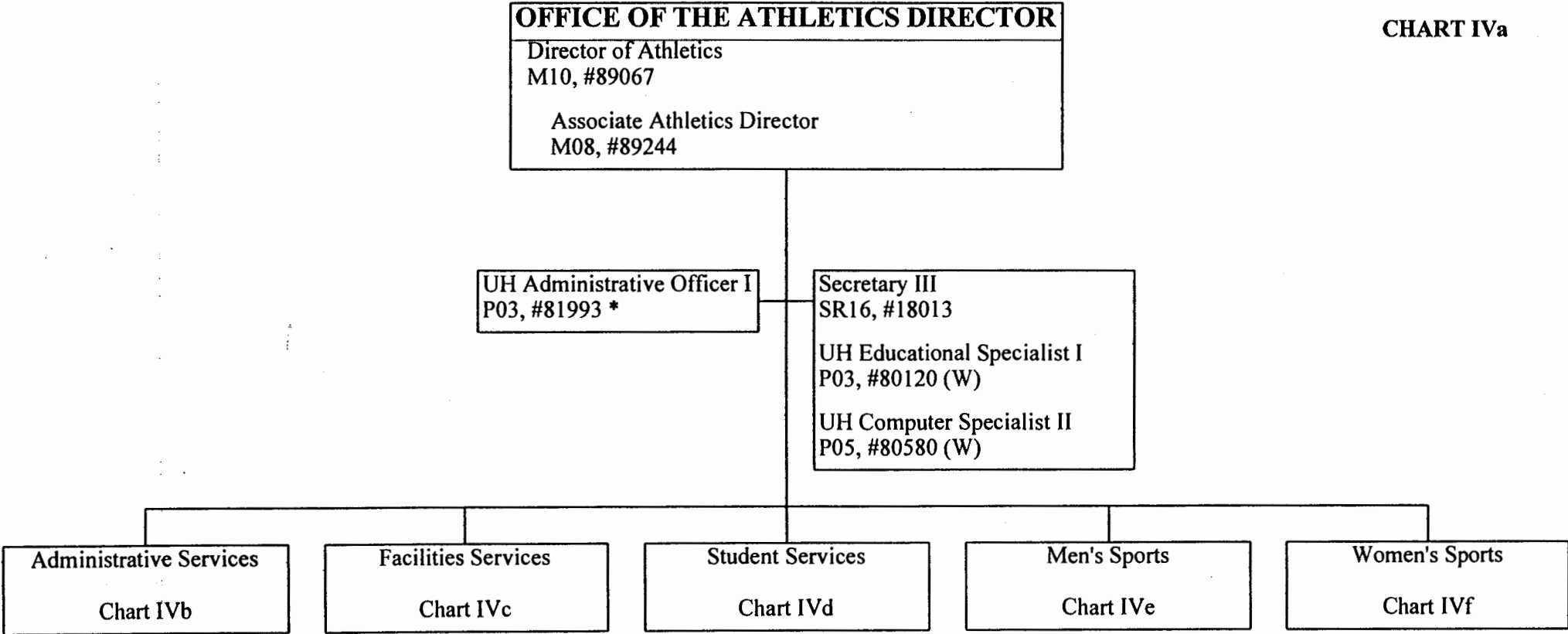


CHART UPDATED

DATE JUN 30 1995

* Position #81993 Reports
Directly to the Associate
Athletics Director (Position #89244)

General Funds - 4.00
(W) Revolving Funds - 2.00

STATE OF HAWAII
UNIVERSITY OF HAWAII
UNIVERSITY OF HAWAII AT MANOA

INTERCOLLEGIATE ATHLETICS

CHART IVb

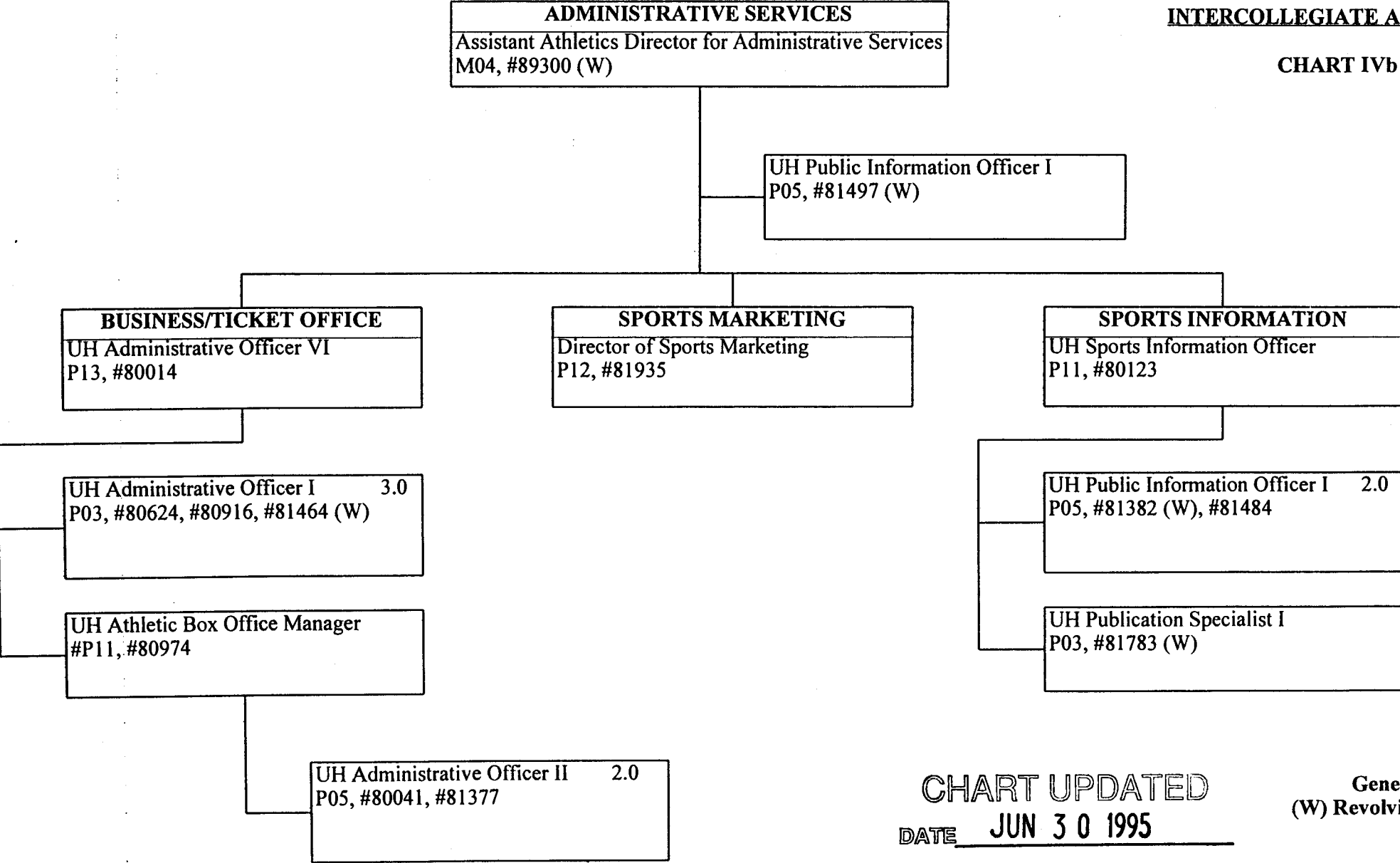


CHART UPDATED
DATE JUN 30 1995

General Fund - 7.00
(W) Revolving Fund - 7.00

STATE OF HAWAII
UNIVERSITY OF HAWAII
UNIVERSITY OF HAWAII AT MANOA

INTERCOLLEGIATE ATHLETICS

CHART IVc

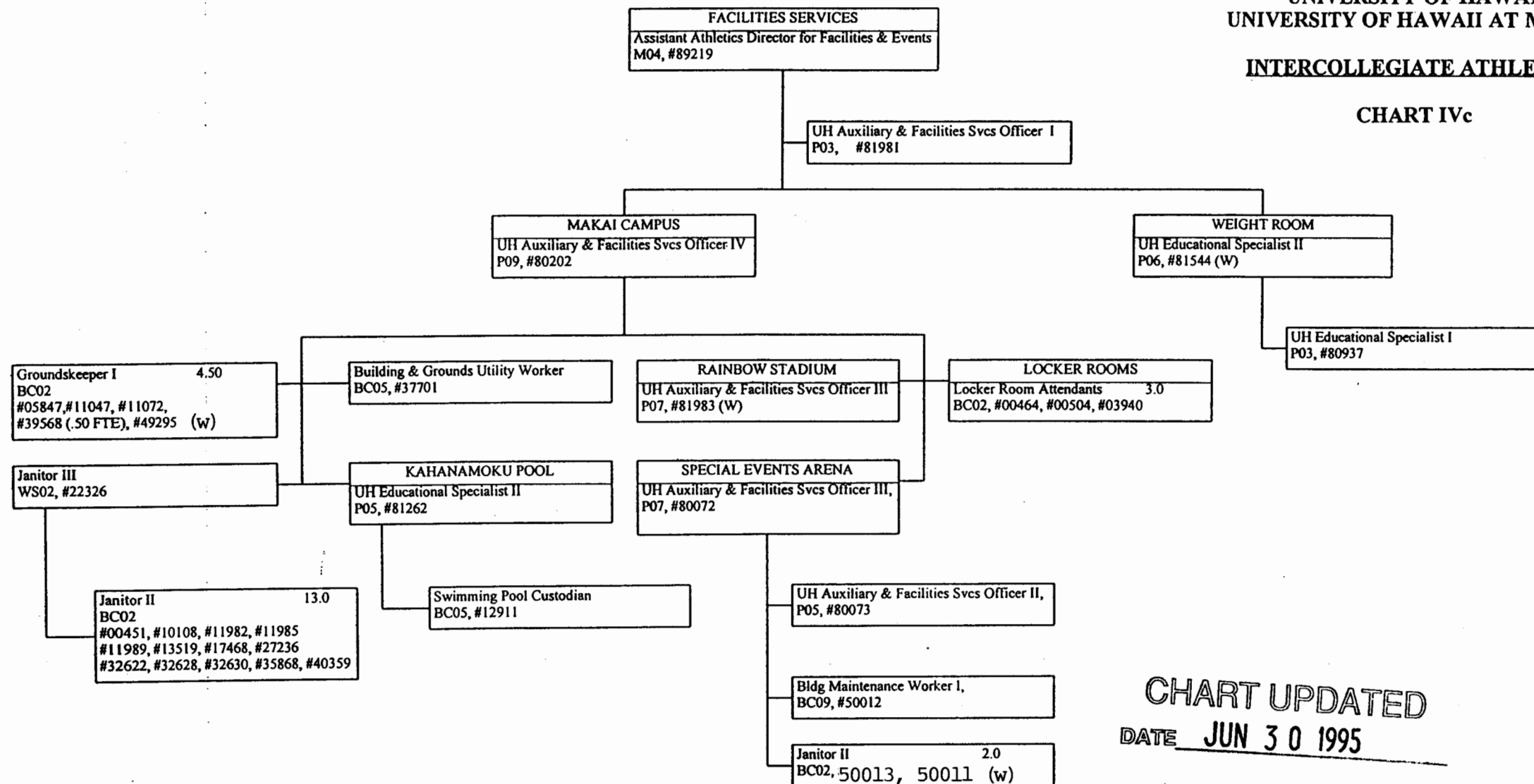


CHART UPDATED
DATE JUN 30 1995

General Fund - 31.50
Revolving Fund - 4.00

STATE OF HAWAII
UNIVERSITY OF HAWAII
UNIVERSITY OF HAWAII AT MANOA
INTERCOLLEGIATE ATHLETICS

CHART IVd

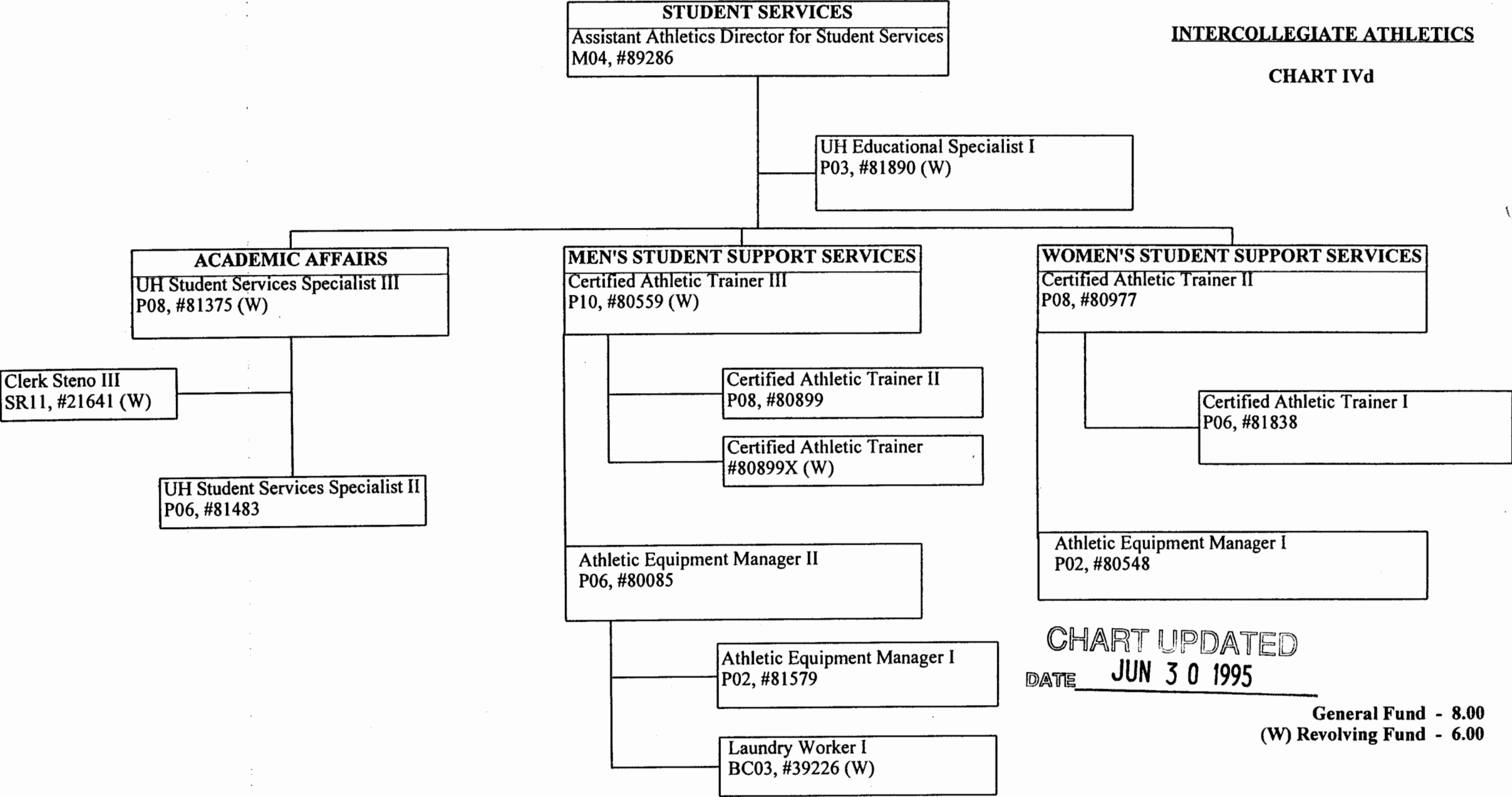


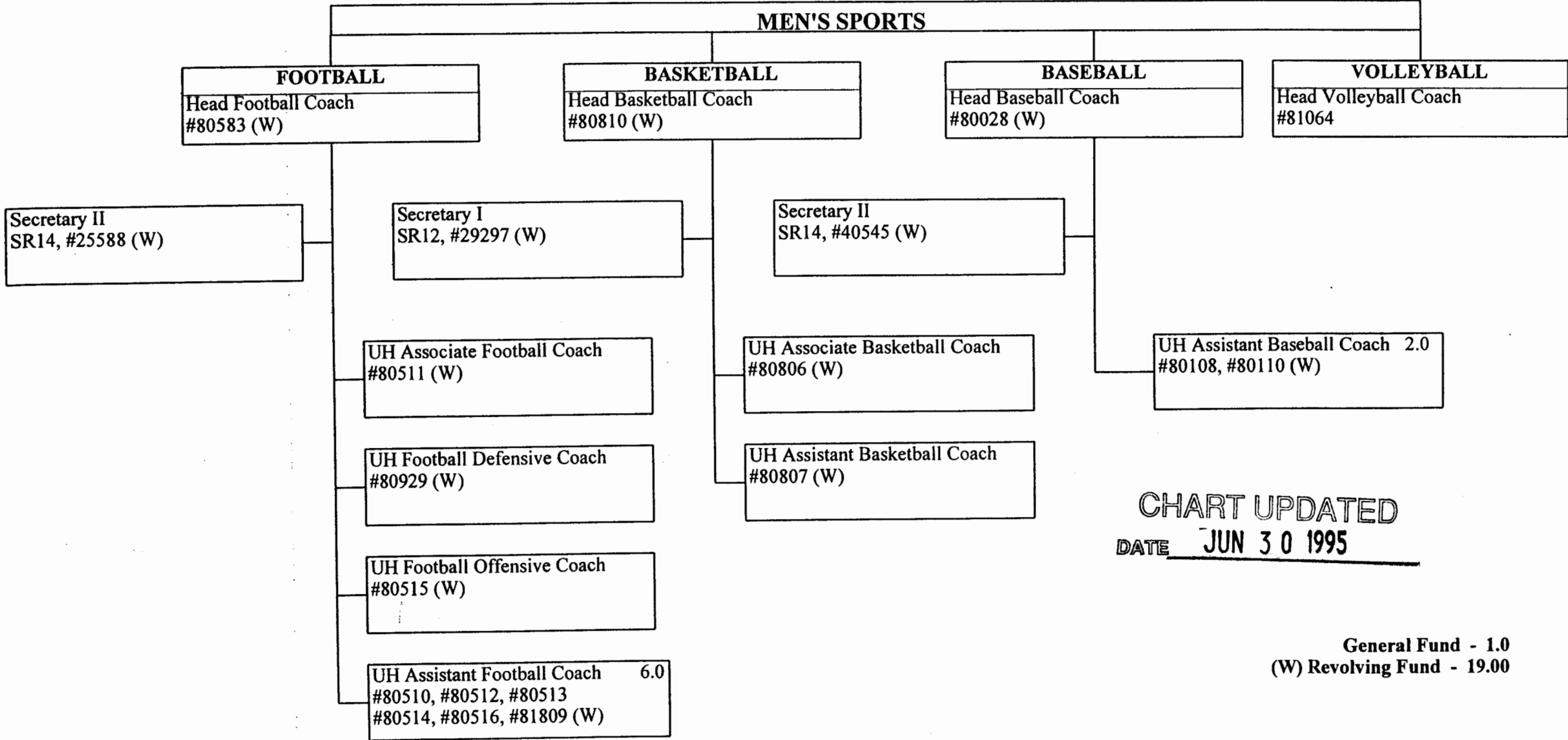
CHART UPDATED
DATE JUN 30 1995

General Fund - 8.00
(W) Revolving Fund - 6.00

STATE OF HAWAII
UNIVERSITY OF HAWAII
UNIVERSITY OF HAWAII AT MANOA

INTERCOLLEGIATE ATHLETICS

CHART IVe



STATE OF HAWAII
UNIVERSITY OF HAWAII
UNIVERSITY OF HAWAII AT MANOA

INTERCOLLEGIATE ATHLETICS

CHART IVf

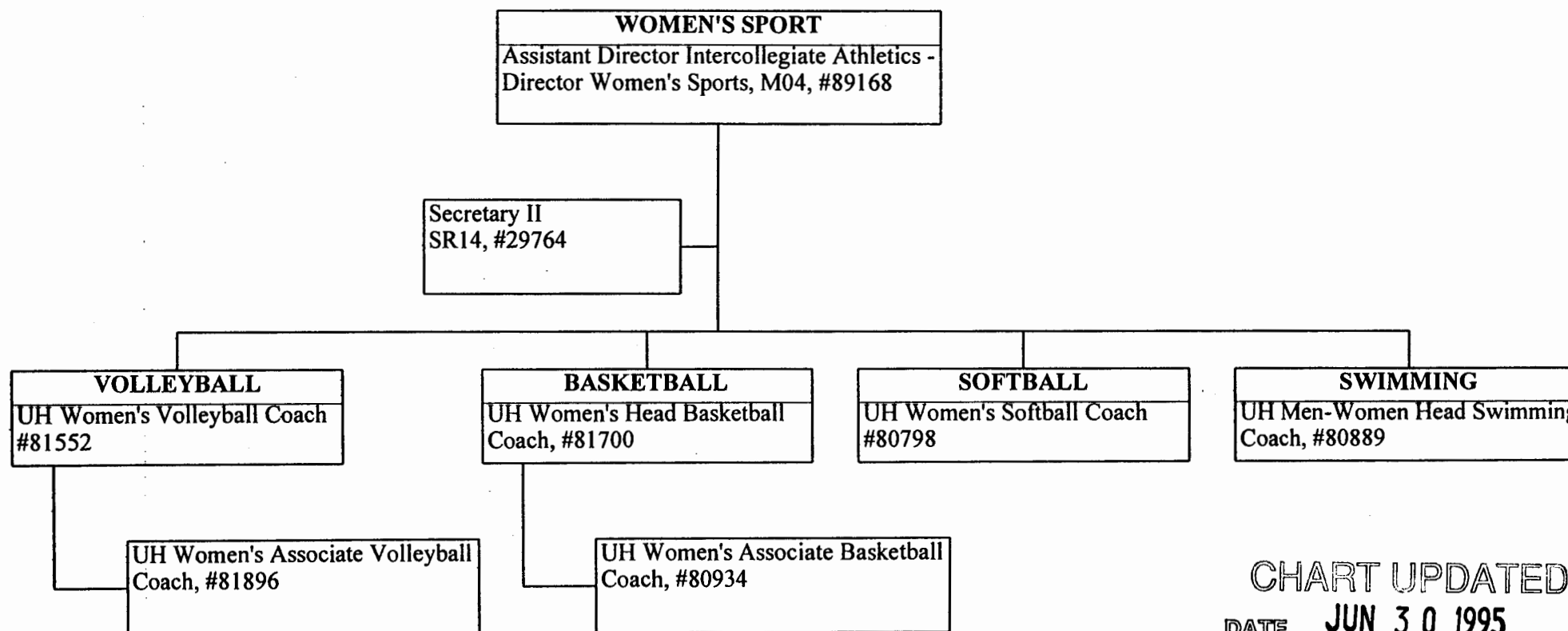


CHART UPDATED
DATE JUN 30 1995

STATE OF HAWAII
UNIVERSITY OF HAWAII
UNIVERSITY OF HAWAII AT MANOA

INTERCOLLEGIATE ATHLETICS

CHART IVc

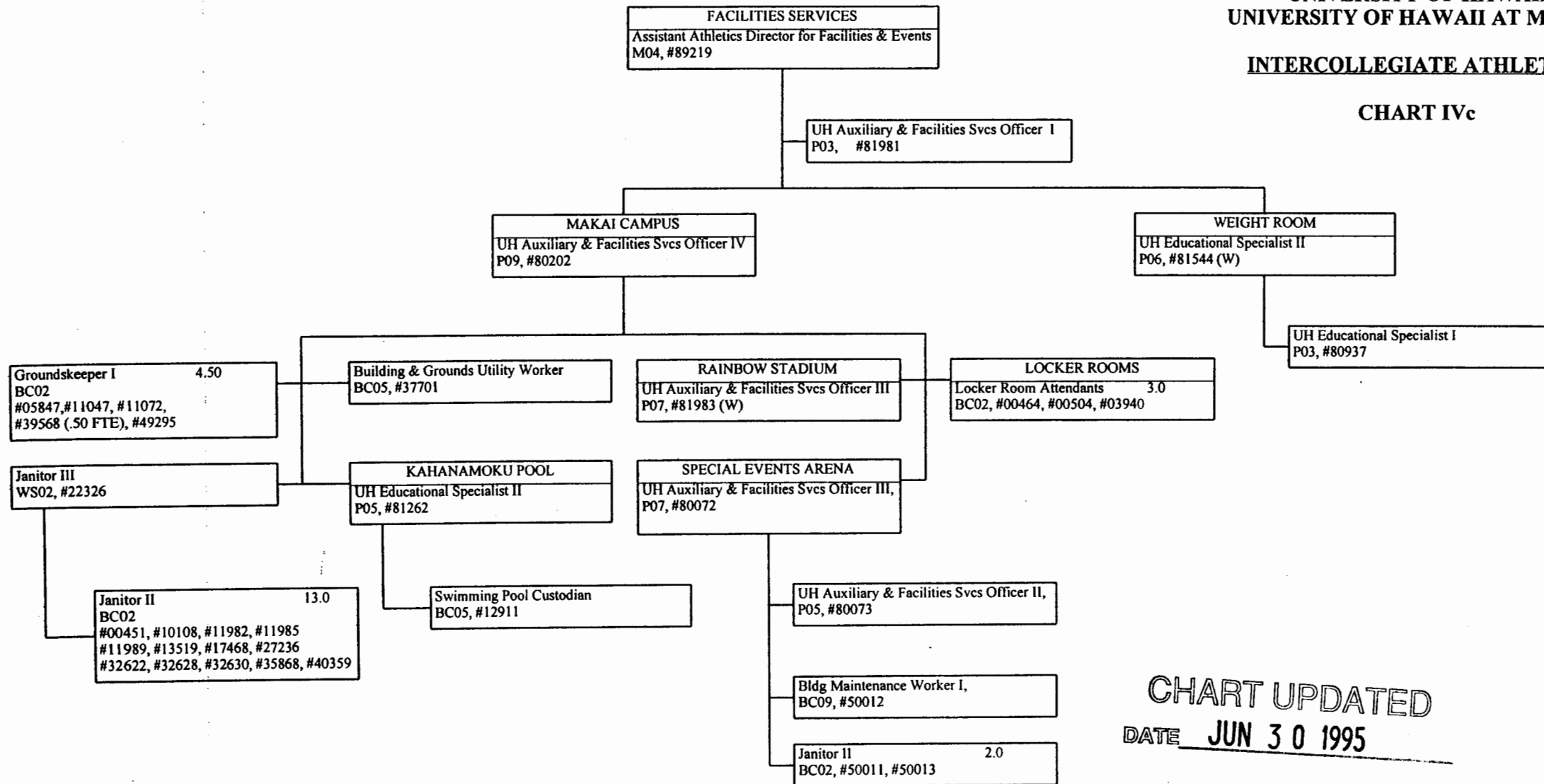


CHART UPDATED
DATE JUN 30 1995

CHANGES
50011 AND
49295 TO REVOLVING
FUND PER MILES FEB. 14, 1996

General Fund - 31.50
Revolving Fund - 33.50
4.00