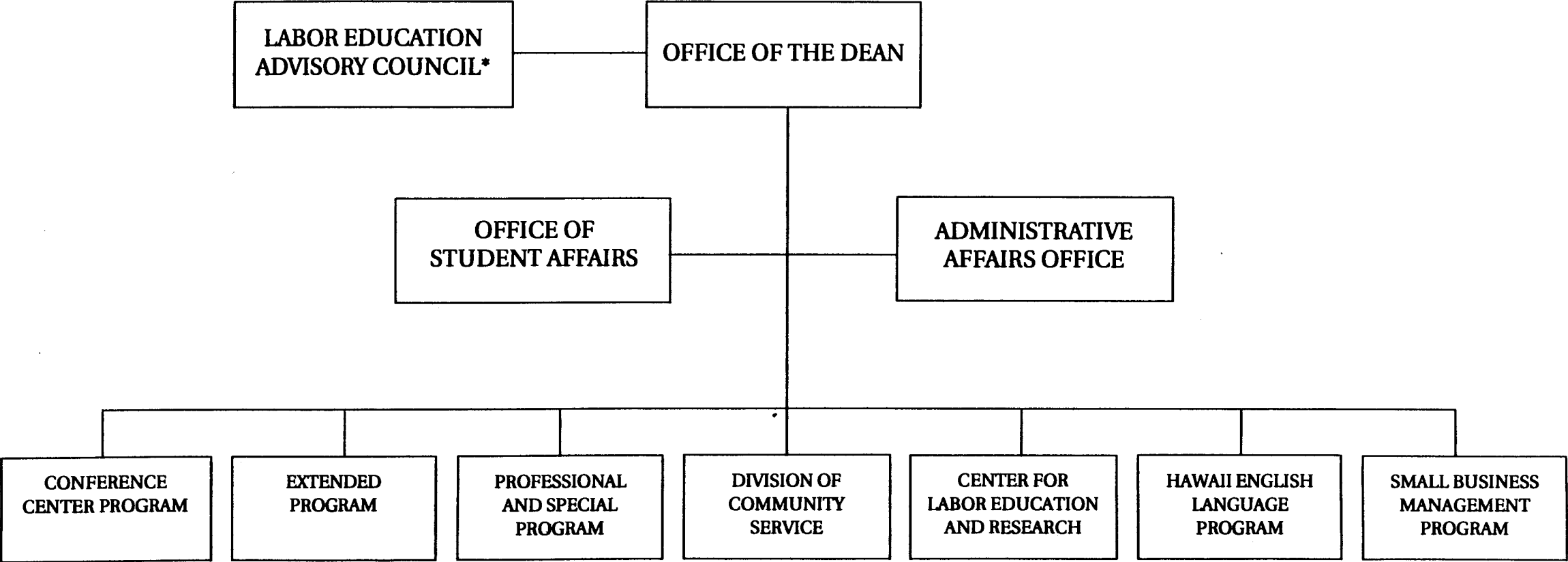


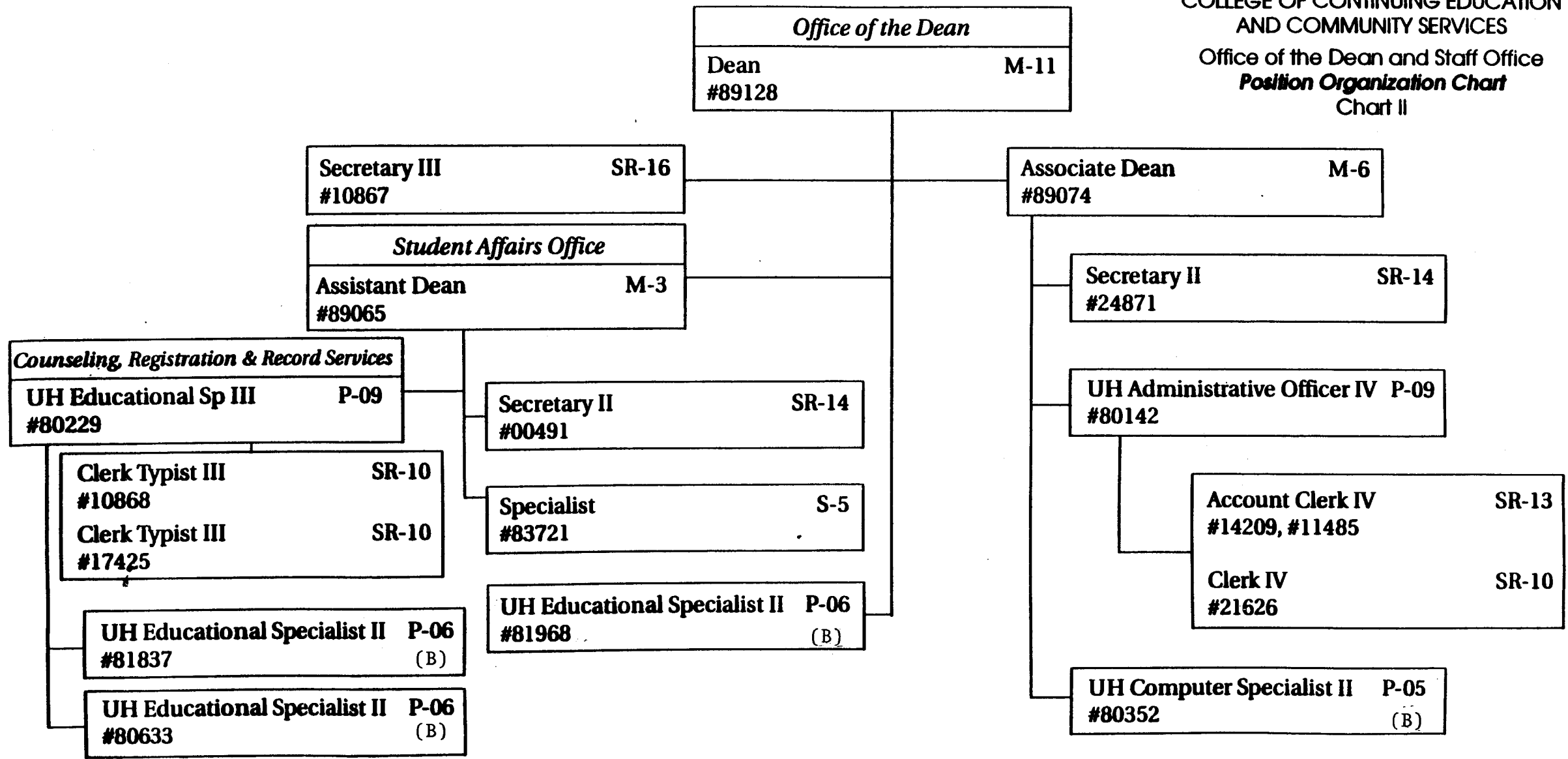
STATE OF HAWAI'I  
**UNIVERSITY OF HAWAII AT MANOA**  
COLLEGE OF CONTINUING EDUCATION  
AND COMMUNITY SERVICES

**Organization Chart**  
Chart I



\*Act 202, SLH 1976, Advisory Body to the Dean  
for the Center for Labor Education and Research

STATE OF HAWAII  
**UNIVERSITY OF HAWAII AT MĀNOA**  
 COLLEGE OF CONTINUING EDUCATION  
 AND COMMUNITY SERVICES  
 Office of the Dean and Staff Office  
**Position Organization Chart**  
 Chart II



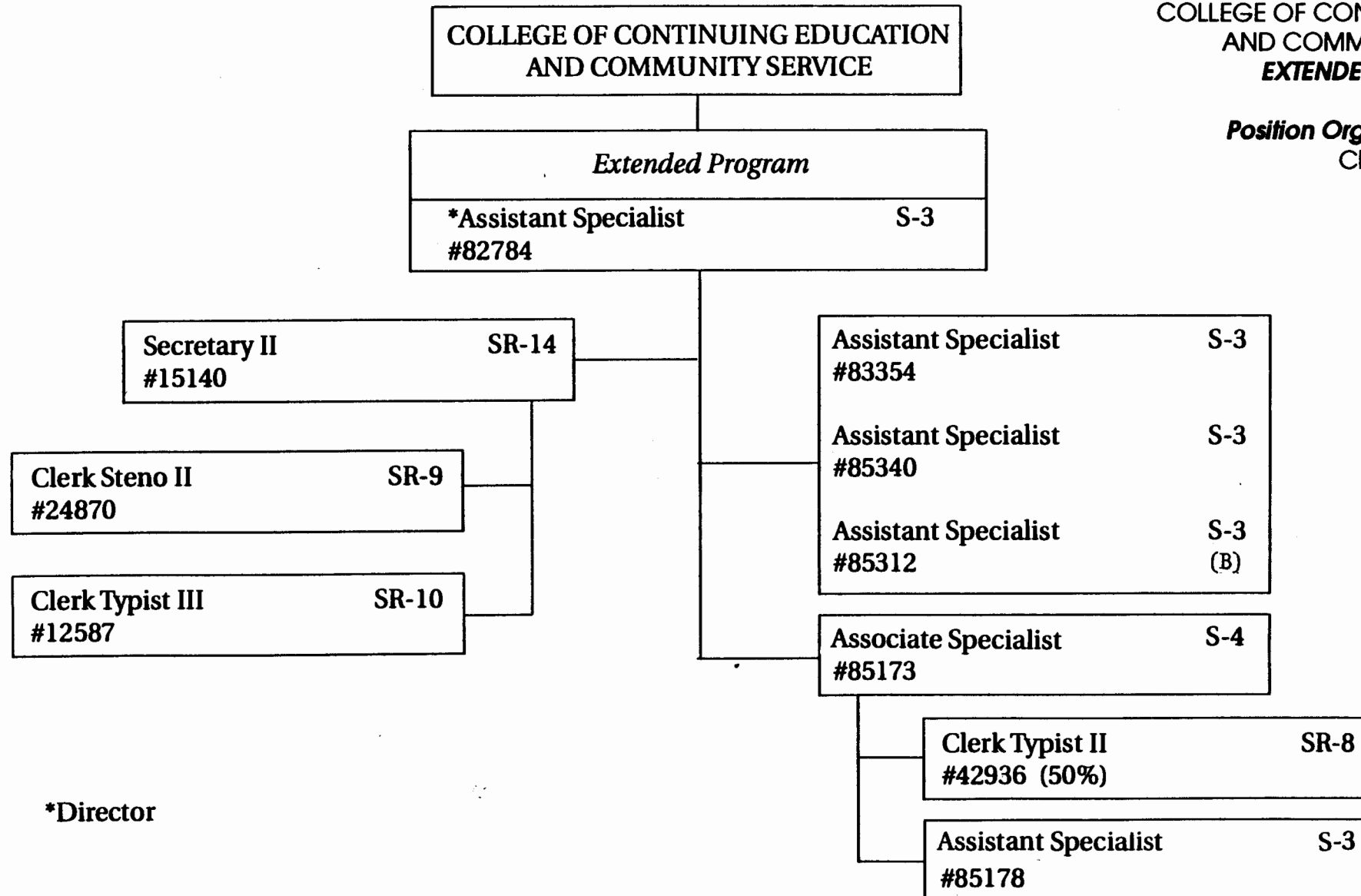
**"Pending Establishment"**  
 Pseudo No. 94025F Clerk Typist (B)  
 Pseudo No. 94026F Cashier (B)

(B) General Fund 14.00  
 (B) Special Fund 6.00

**CHART UPDATED**  
 DATE **JUN 30 1995**

STATE OF HAWAII  
**UNIVERSITY OF HAWAII AT MĀNOA**  
 COLLEGE OF CONTINUING EDUCATION  
 AND COMMUNITY SERVICES  
**EXTENDED PROGRAM**

*Position Organization Chart*  
 Chart III



\*Director

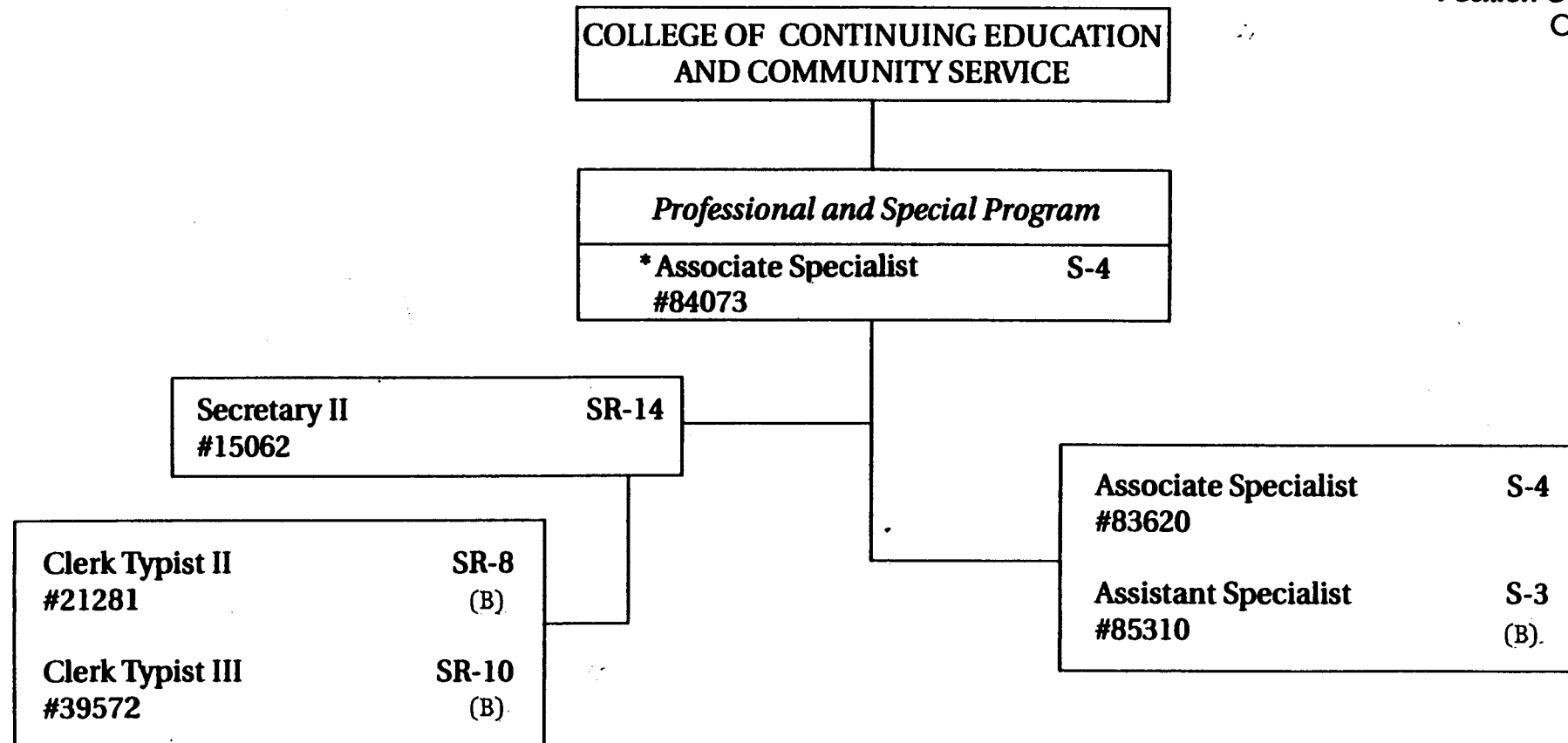
"Pending Establishment"  
 Pseudo No. 94532F Assistant Specialist (B)

General Fund 8.50  
 (B) Special Fund 2.00

CHART UPDATED  
 DATE JUN 30 1995

STATE OF HAWAII  
**UNIVERSITY OF HAWAII AT MANOA**  
 COLLEGE OF CONTINUING EDUCATION  
 AND COMMUNITY SERVICES  
**PROFESSIONAL AND SPECIAL PROGRAM**

*Position Organization Chart*  
 Chart III-A



\* Serves as Director.

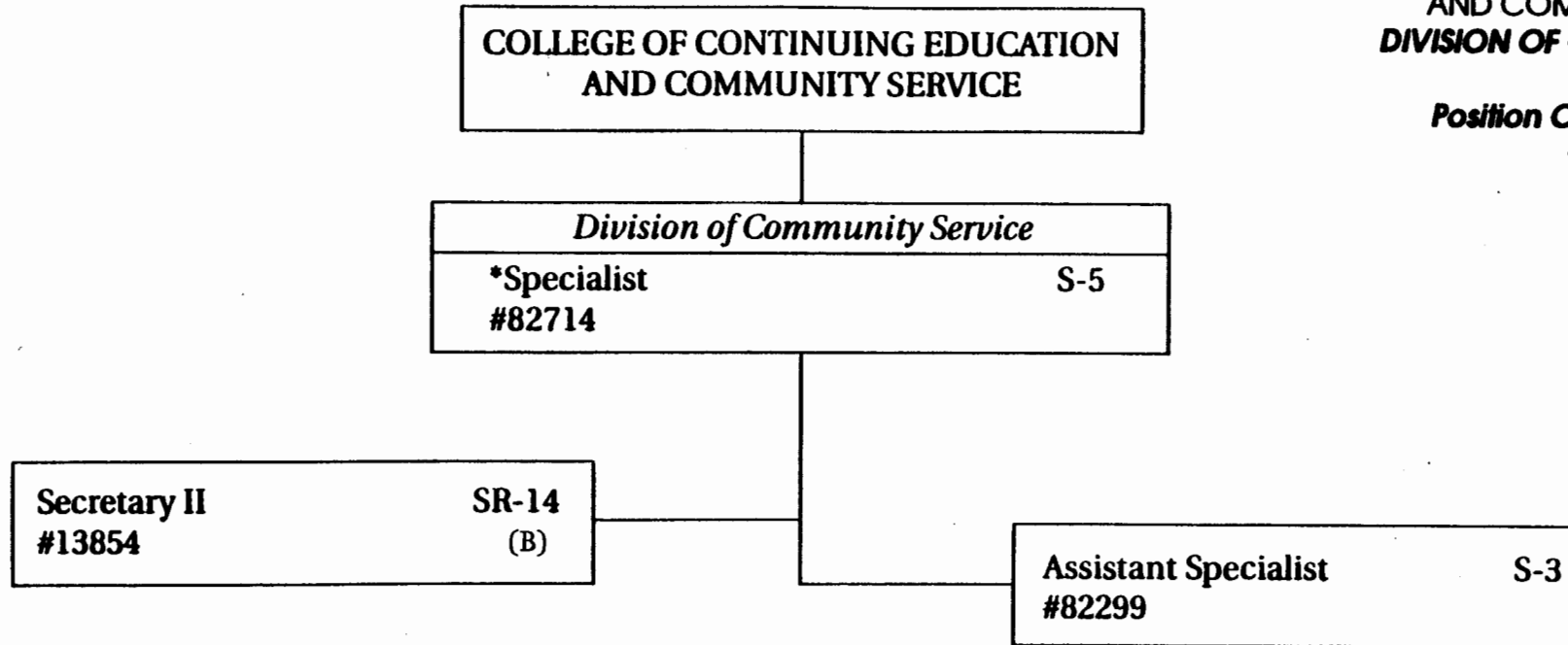
"Pending Establishment"  
 Pseudo No. 94527F Assistant Specialist (B)

General Fund 3.00  
 (B) Special Fund 4.00

CHART UPDATED  
 DATE JUN 30 1995

STATE OF HAWAII  
**UNIVERSITY OF HAWAII AT MANOA**  
 COLLEGE OF CONTINUING EDUCATION  
 AND COMMUNITY SERVICES  
**DIVISION OF COMMUNITY SERVICE**

**Position Organization Chart**  
 Chart IV



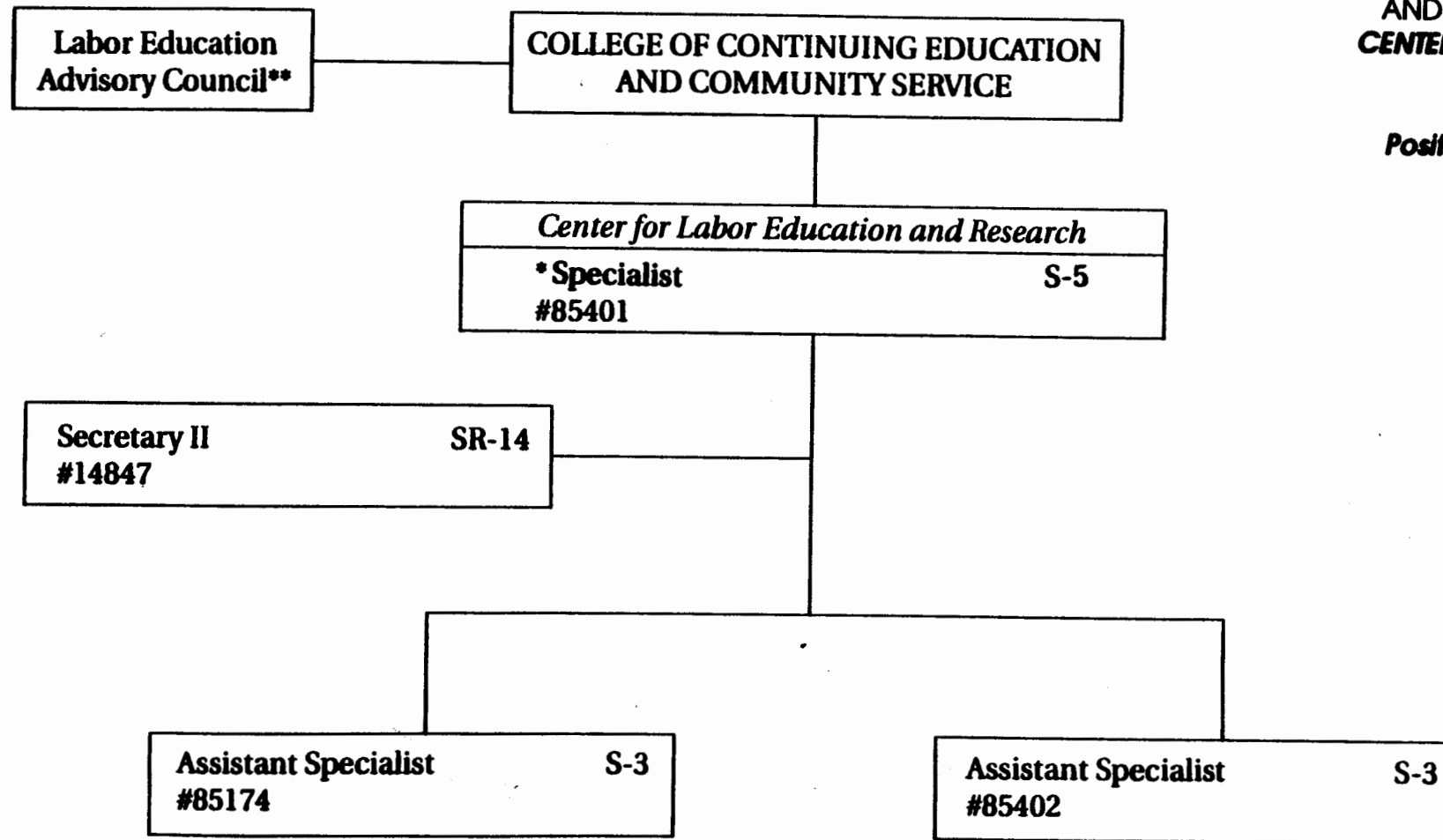
**\*Director**

General Fund 2.00  
 (B) Special Fund 1.00

CHART UPDATED  
 DATE JUN 30 1995

STATE OF HAWAI'I  
**UNIVERSITY OF HAWAI'I AT MĀNOA**  
 COLLEGE OF CONTINUING EDUCATION  
 AND COMMUNITY SERVICES  
**CENTER FOR LABOR EDUCATION  
 AND RESEARCH**

*Position Organization Chart*  
 Chart V



\*\*Act 202, SLH 1976, Advisory Body to the Dean of CCECS

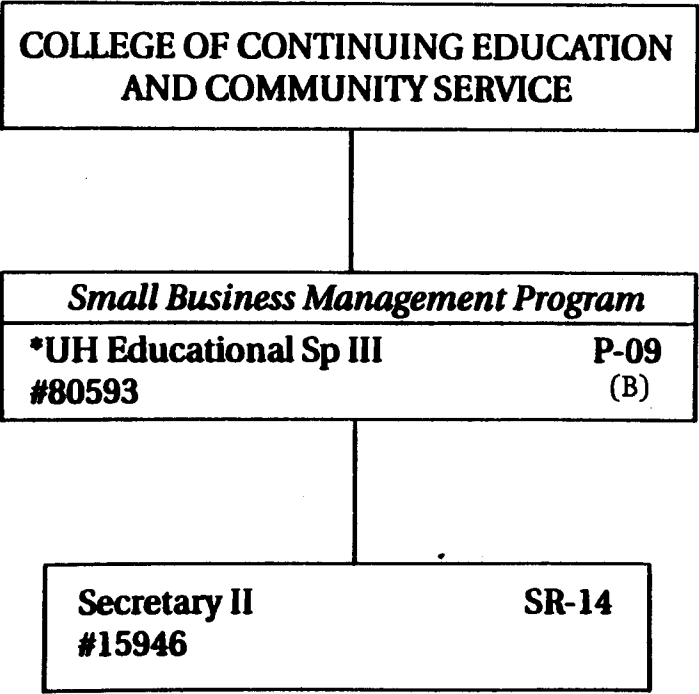
\*Director

General Fund 4.00

CHART UPDATED  
 DATE JUN 30 1995

STATE OF HAWAI'I  
**UNIVERSITY OF HAWAI'I AT MĀNOA**  
COLLEGE OF CONTINUING EDUCATION  
AND COMMUNITY SERVICES  
**SMALL BUSINESS MANAGEMENT PROGRAM**

*Position Organization Chart*  
Chart VI



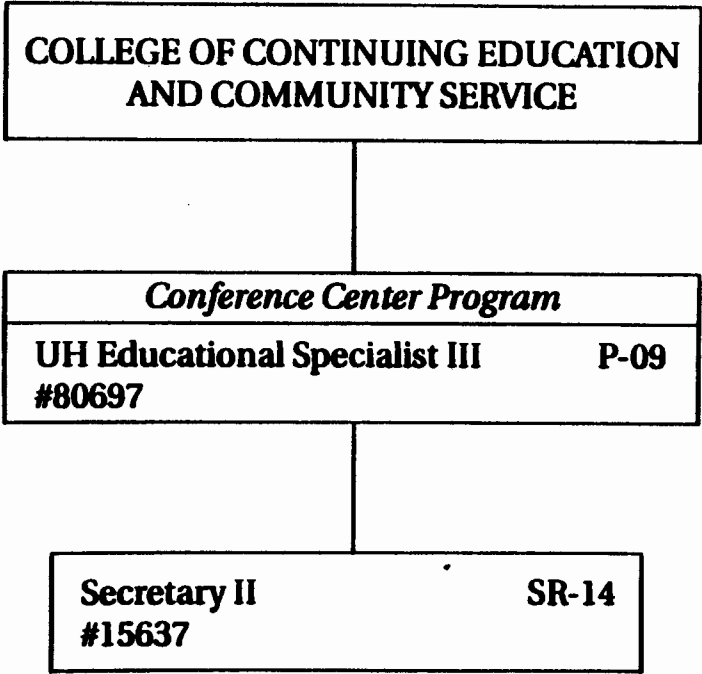
\*Director

General Fund 1.00  
(B) Special Fund 1.00

CHART UPDATED  
DATE JUN 30 1995

STATE OF HAWAI'I  
**UNIVERSITY OF HAWAI'I AT MĀNOA**  
COLLEGE OF CONTINUING EDUCATION  
AND COMMUNITY SERVICES  
**THE CONFERENCE CENTER**

*Position Organization Chart*  
Chart VII



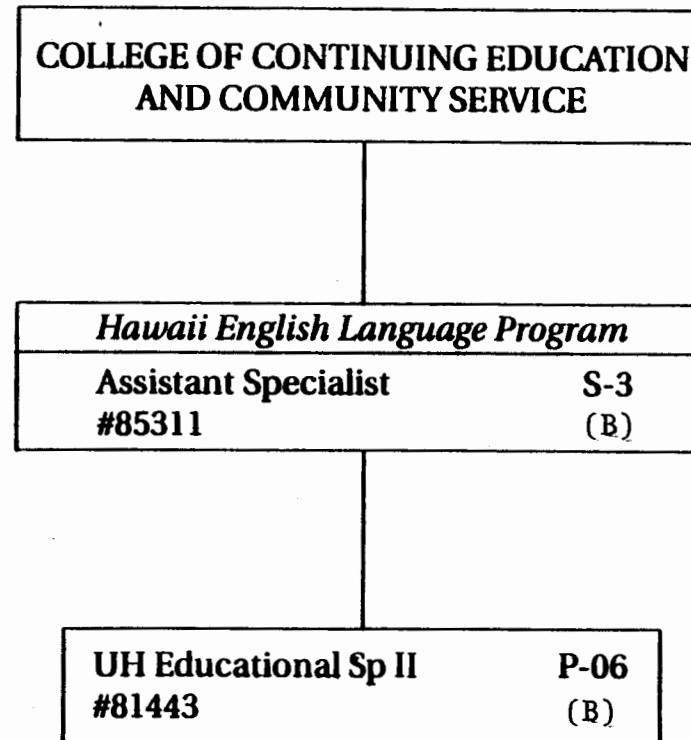
General Fund 2.00

CHART UPDATED  
DATE JUN 30 1995



STATE OF HAWAI'I  
**UNIVERSITY OF HAWAI'I AT MĀNOA**  
COLLEGE OF CONTINUING EDUCATION  
AND COMMUNITY SERVICES  
**HAWAII ENGLISH LANGUAGE PROGRAM**

**Position Organization Chart**  
Chart VIII



(B) Special Fund 2.00

CHART UPDATED  
DATE JUN 30 1995