

STATE OF HAWAII  
UNIVERSITY OF HAWAII  
UNIVERSITY OF HAWAII AT MANOA  
SCHOOL OF OCEAN AND EARTH  
SCIENCE AND TECHNOLOGY

ORGANIZATION CHART

CHART XXXI

CHART UPDATED  
DATE JUN 30 1995

APPROVED:

*C. Barry Raleigh*

C. Barry Raleigh  
Dean, SOEST

06/30/95

STATE OF HAWAII  
UNIVERSITY OF HAWAII  
UNIVERSITY OF HAWAII AT MANOA  
SCHOOL OF OCEAN AND EARTH  
SCIENCE AND TECHNOLOGY

OFFICE OF THE DEAN  
POSITION ORGANIZATION CHART

CHART XXXII

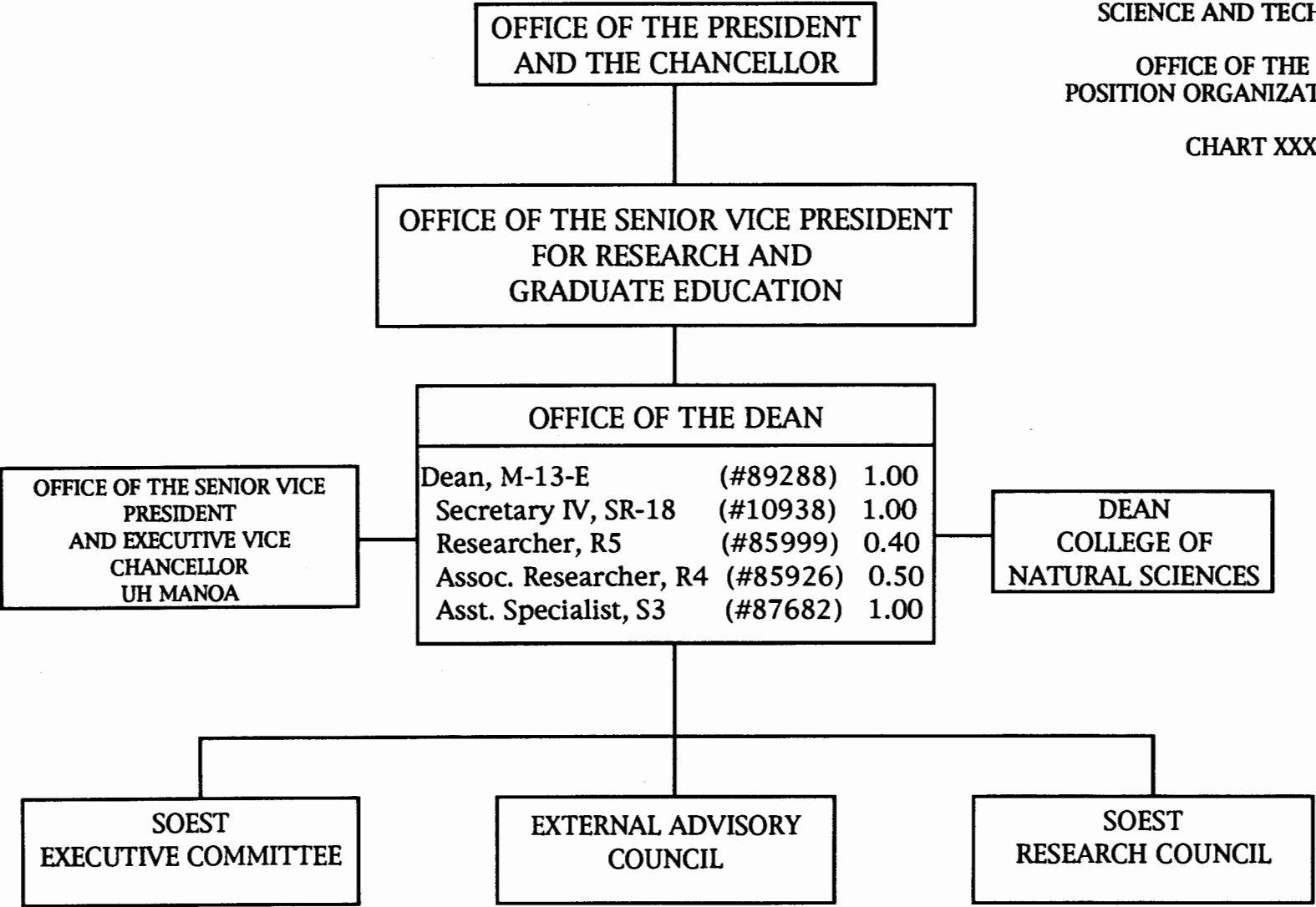


CHART UPDATED  
DATE JUN 30 1995

STATE OF HAWAII  
 UNIVERSITY OF HAWAII  
 UNIVERSITY OF HAWAII AT MANOA  
 SCHOOL OF OCEAN AND EARTH  
 SCIENCE AND TECHNOLOGY

OFFICE OF THE ASSOCIATE DEAN  
 FOR ACADEMIC AFFAIRS  
 POSITION ORGANIZATION CHART

CHART XXXIII

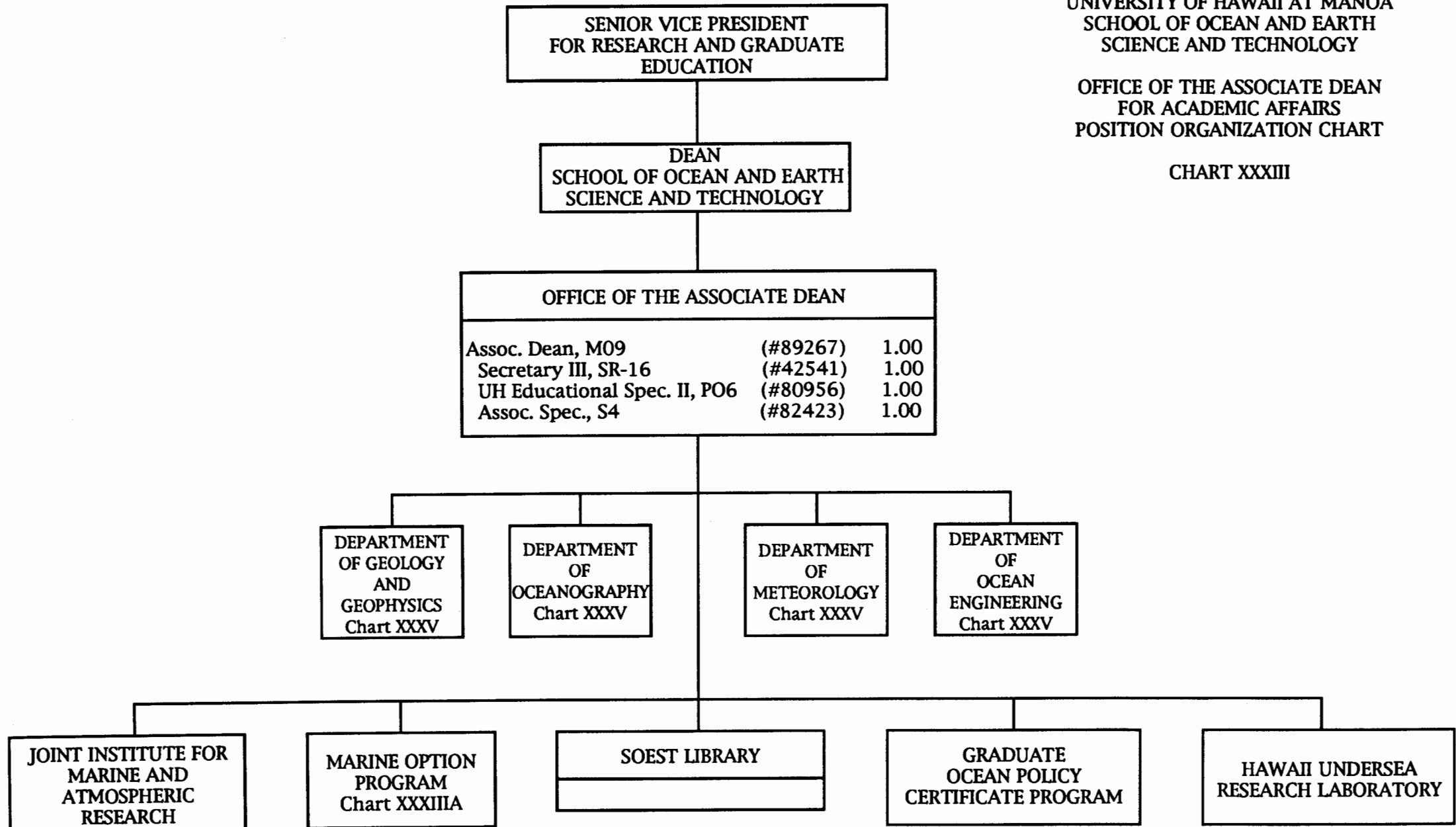
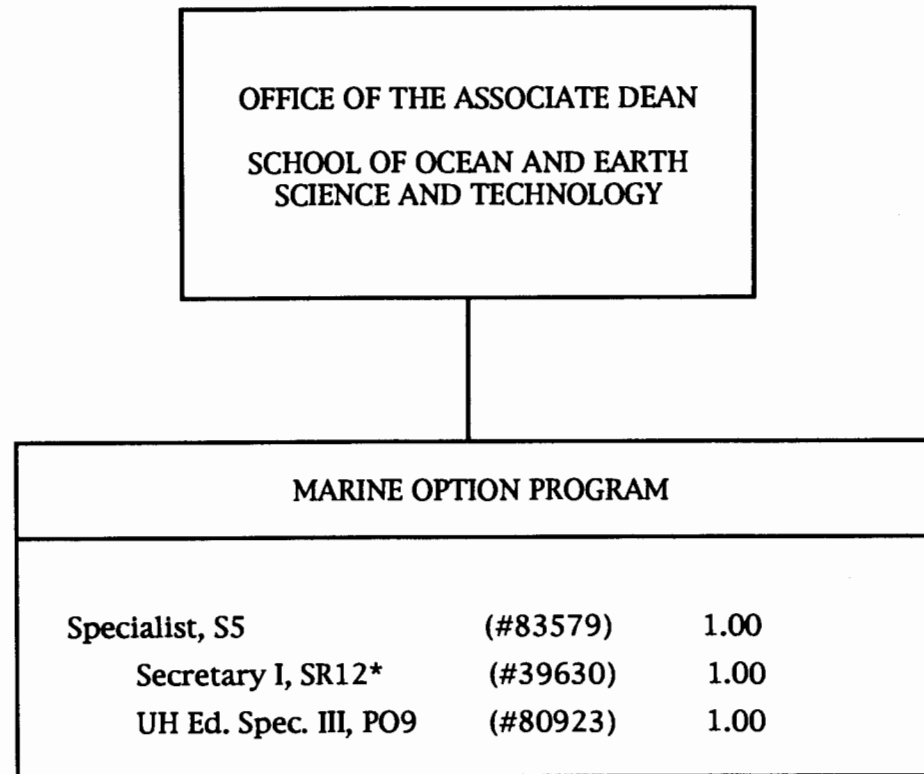


CHART UPDATED  
 DATE JUN 30 1995

STATE OF HAWAII  
UNIVERSITY OF HAWAII  
UNIVERSITY OF HAWAII AT MANOA  
SCHOOL OF OCEAN AND EARTH  
SCIENCE AND TECHNOLOGY

MARINE OPTION PROGRAM  
POSITION ORGANIZATION CHART

CHART XXXIIIA



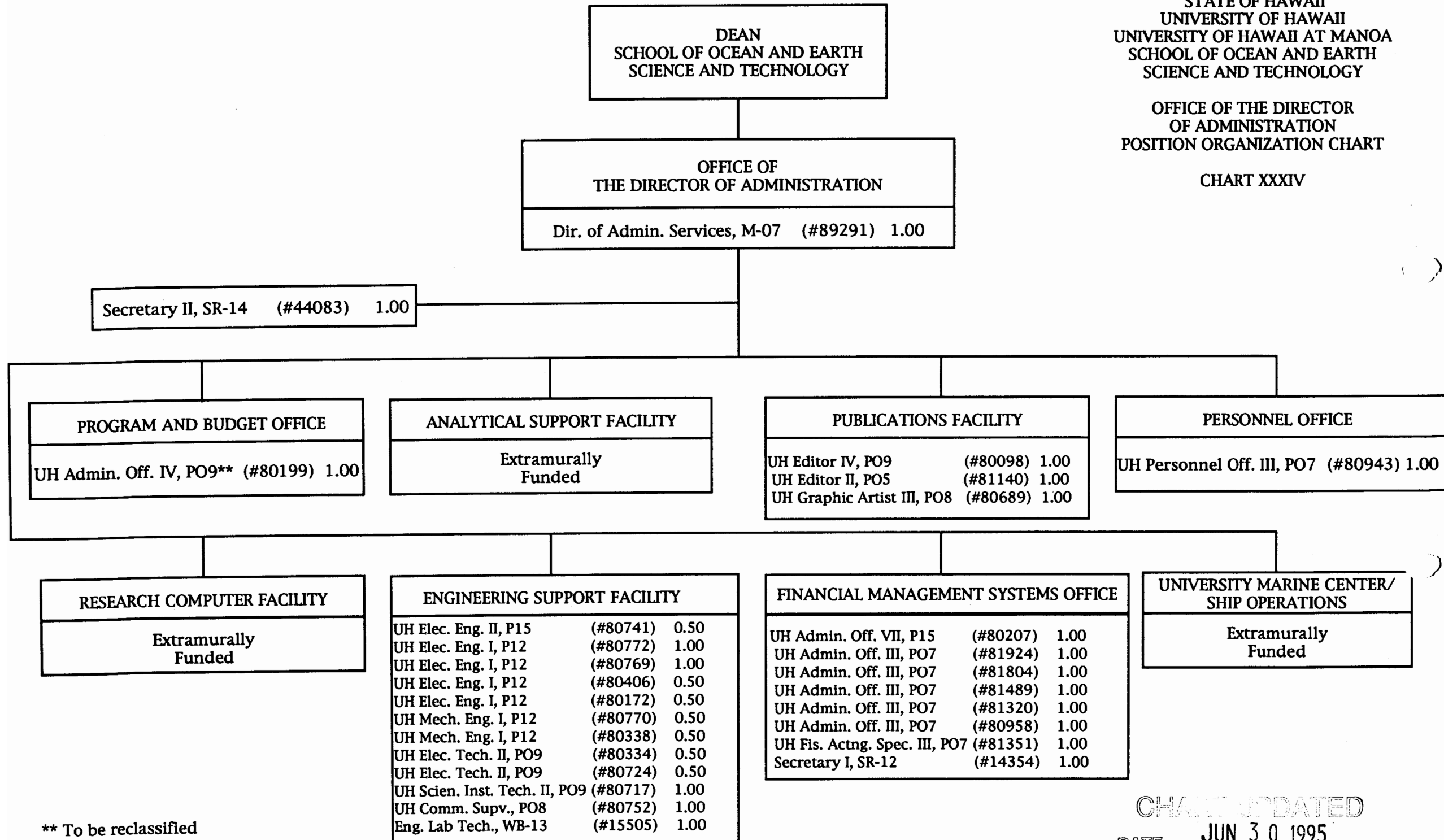
\* To be reclassified

CHART UPDATED  
DATE JUN 30 1995

STATE OF HAWAII  
UNIVERSITY OF HAWAII  
UNIVERSITY OF HAWAII AT MANOA  
SCHOOL OF OCEAN AND EARTH  
SCIENCE AND TECHNOLOGY

OFFICE OF THE DIRECTOR  
OF ADMINISTRATION  
POSITION ORGANIZATION CHART

CHART XXXIV



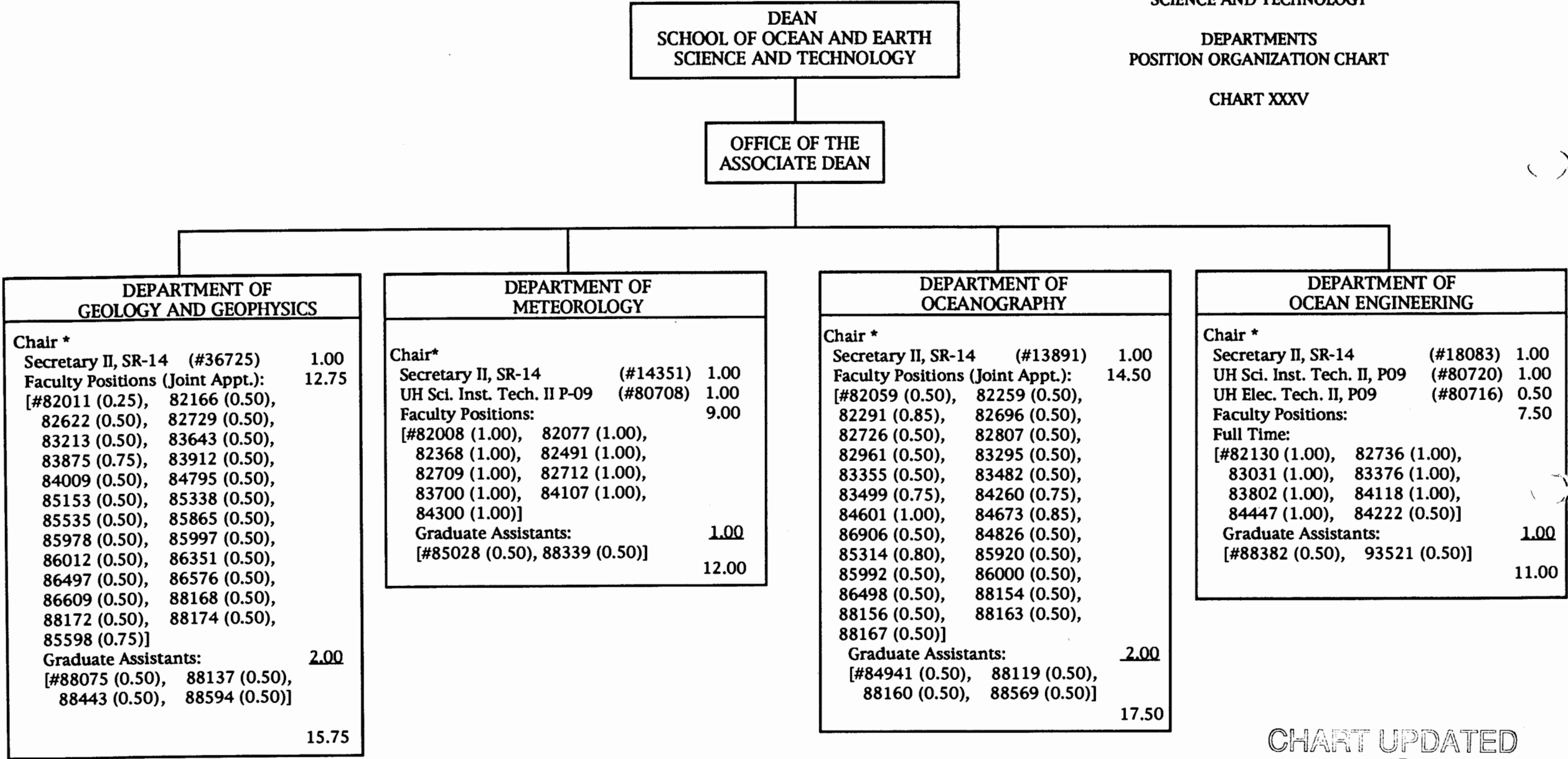
\*\* To be reclassified

CHART UPDATED  
DATE JUN 30 1995

STATE OF HAWAII  
UNIVERSITY OF HAWAII  
UNIVERSITY OF HAWAII AT MANOA  
SCHOOL OF OCEAN AND EARTH  
SCIENCE AND TECHNOLOGY

DEPARTMENTS  
POSITION ORGANIZATION CHART

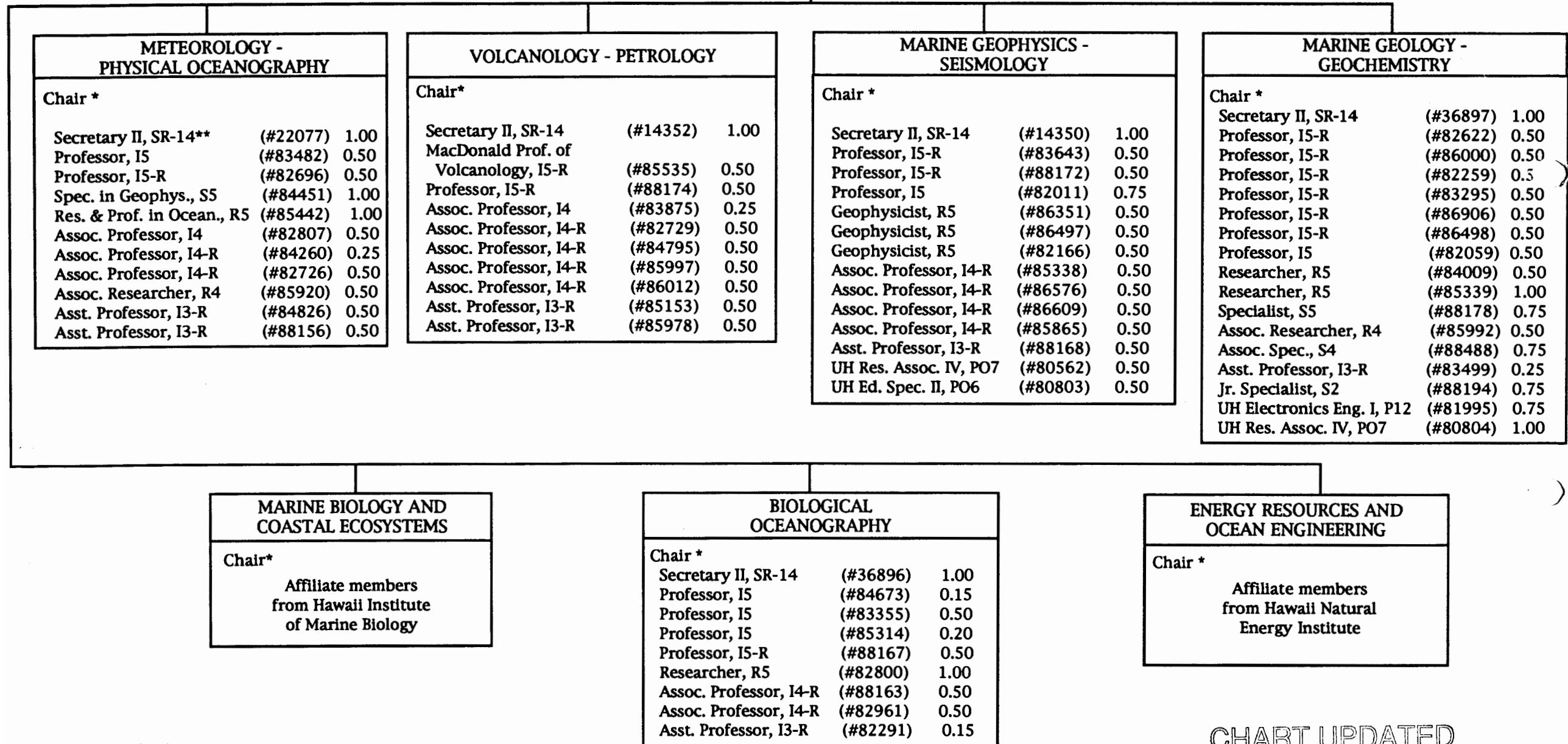
CHART XXXV



\* Appointed from faculty positions

CHART UPDATED  
DATE JUN 30 1995

DEAN  
SCHOOL OF OCEAN AND EARTH  
SCIENCE AND TECHNOLOGY



\* Appointed from faculty positions  
\*\* Authorized Temporary Position

STATE OF HAWAII  
UNIVERSITY OF HAWAII  
UNIVERSITY OF HAWAII AT MANOA  
SCHOOL OF OCEAN AND EARTH  
SCIENCE AND TECHNOLOGY

HAWAII INSTITUTE OF MARINE BIOLOGY  
PROPOSED ORGANIZATION CHART

CHART XXXVII

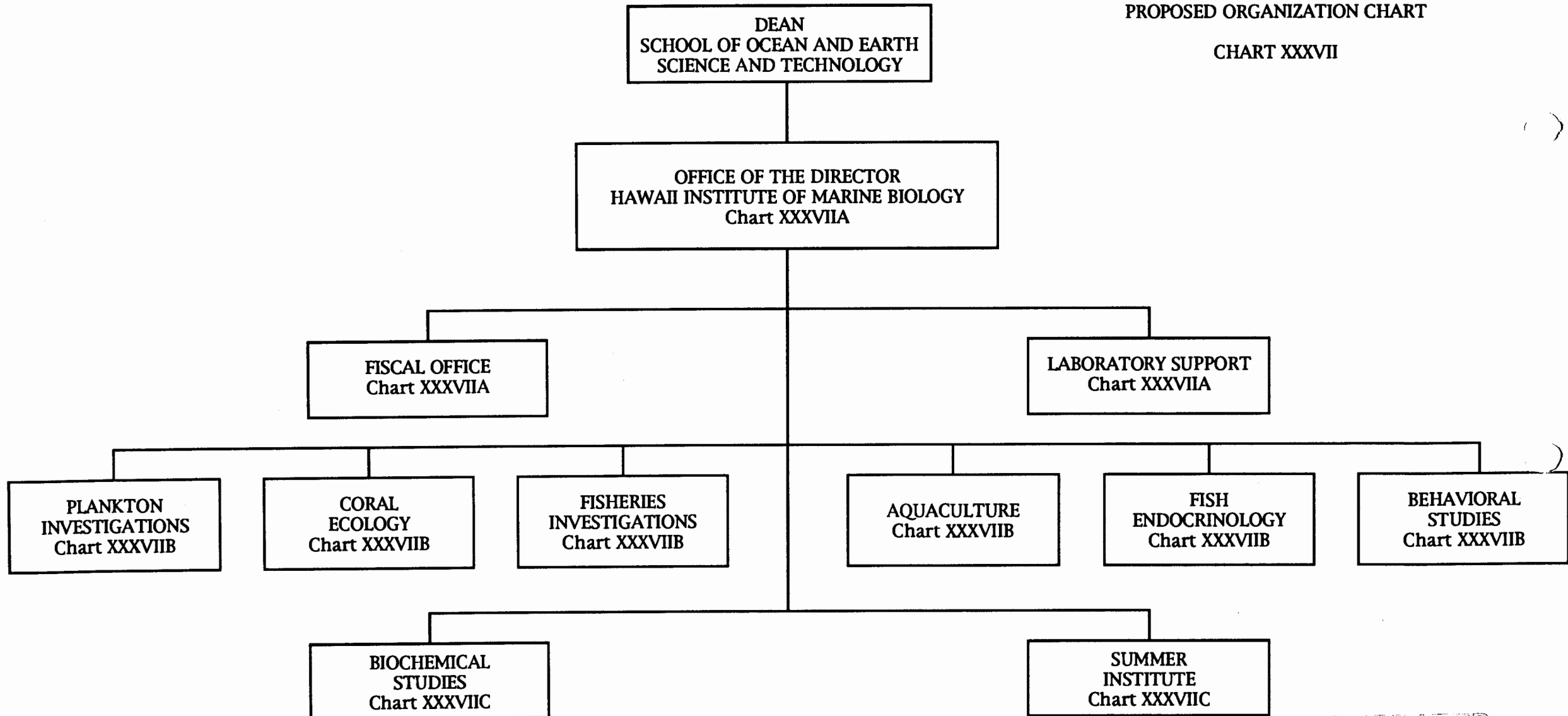


CHART UPDATED  
DATE JUN 30 1995



STATE OF HAWAII  
UNIVERSITY OF HAWAII  
UNIVERSITY OF HAWAII AT MANOA  
SCHOOL OF OCEAN AND EARTH  
SCIENCE AND TECHNOLOGY

HAWAII INSTITUTE OF MARINE BIOLOGY  
POSITION ORGANIZATION CHART

CHART XXXVIIA

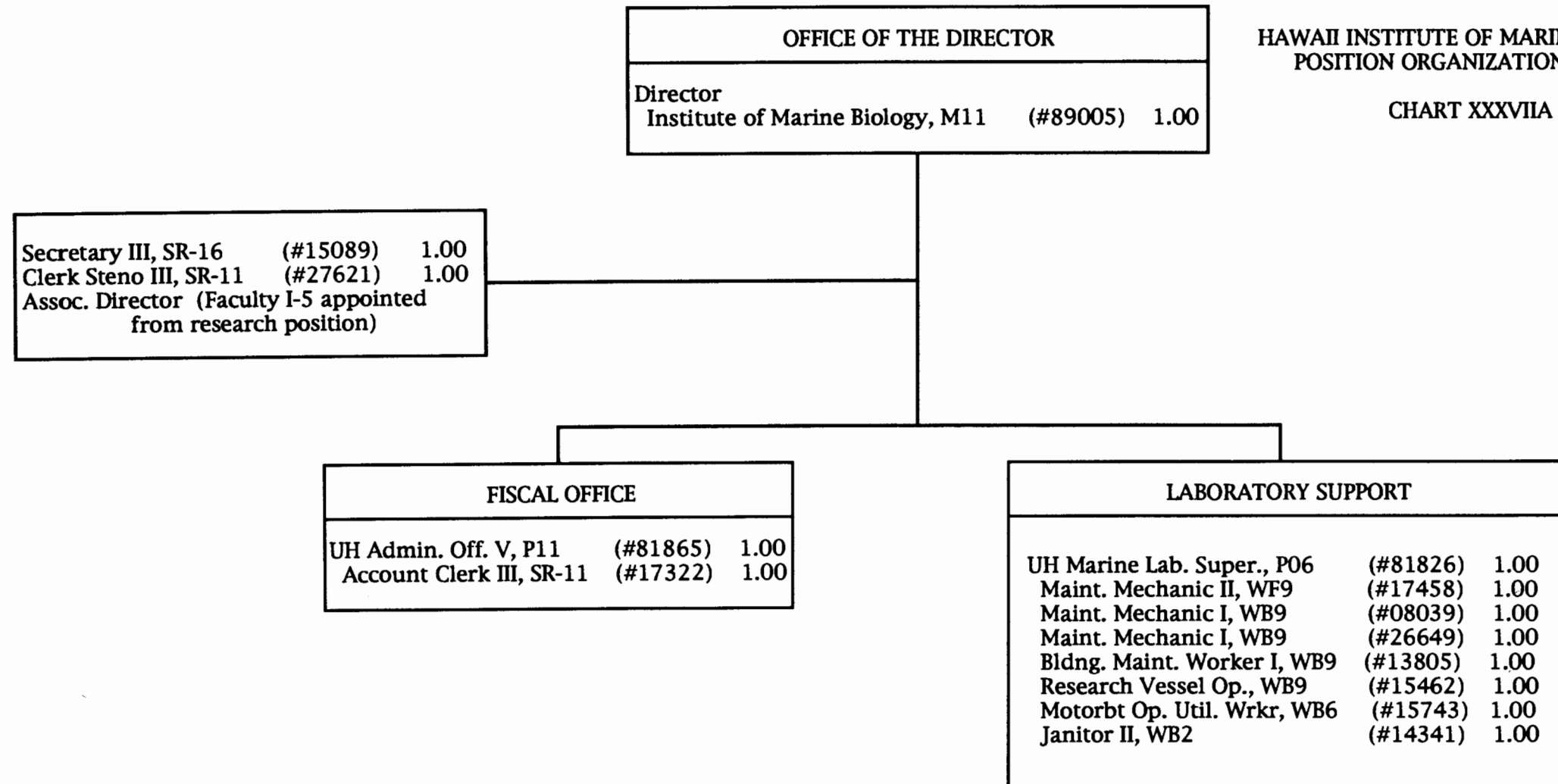


CHART UPDATED  
DATE JUN 30 1995

STATE OF HAWAII  
UNIVERSITY OF HAWAII  
UNIVERSITY OF HAWAII AT MANOA  
SCHOOL OF OCEAN AND EARTH  
SCIENCE AND TECHNOLOGY

HAWAII INSTITUTE OF MARINE BIOLOGY  
POSITION ORGANIZATION CHART

CHART XXXVIIB

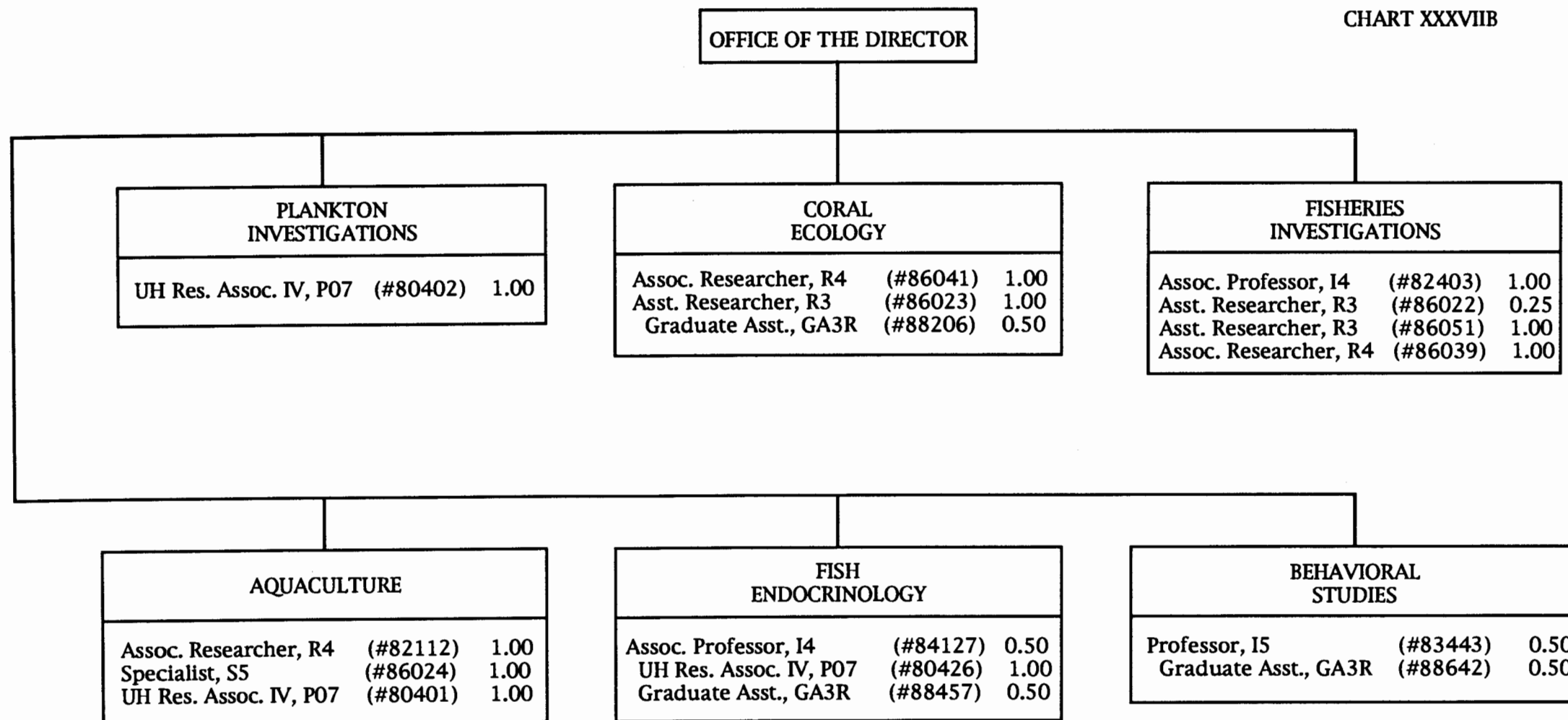


CHART UPDATED  
DATE JUN 30 1995

STATE OF HAWAII  
UNIVERSITY OF HAWAII  
UNIVERSITY OF HAWAII AT MANOA  
SCHOOL OF OCEAN AND EARTH  
SCIENCE AND TECHNOLOGY

HAWAII INSTITUTE OF MARINE BIOLOGY  
PROPOSED POSITION ORGANIZATION  
CHART

CHART XXXVIIC

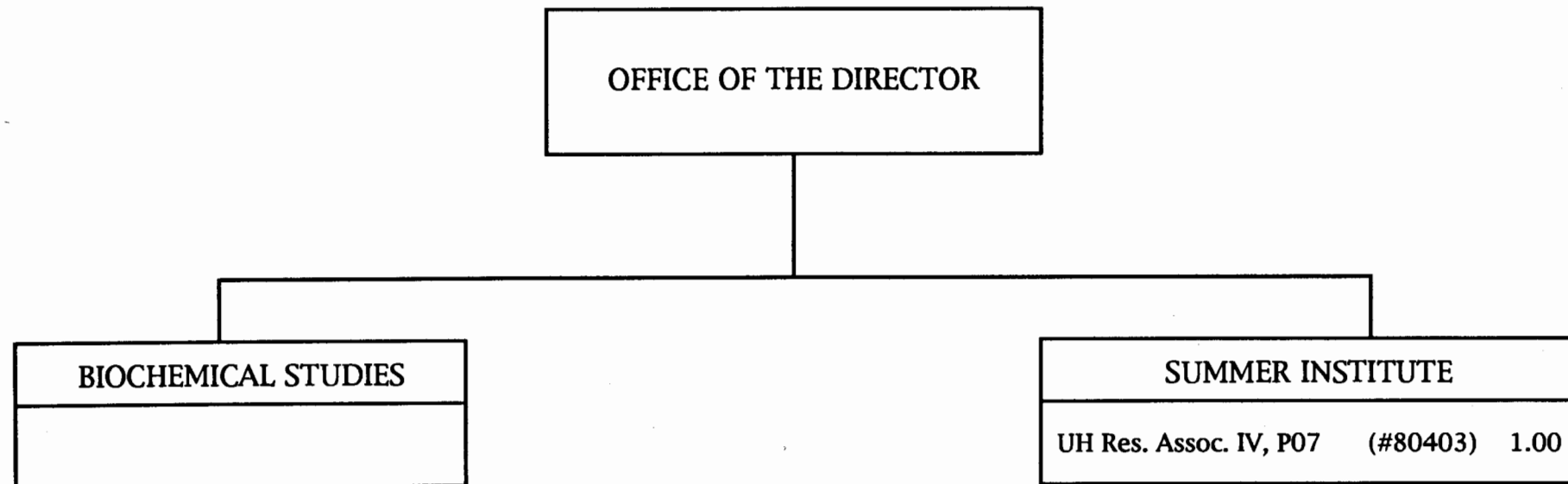


CHART UPDATED  
DATE JUN 30 1995

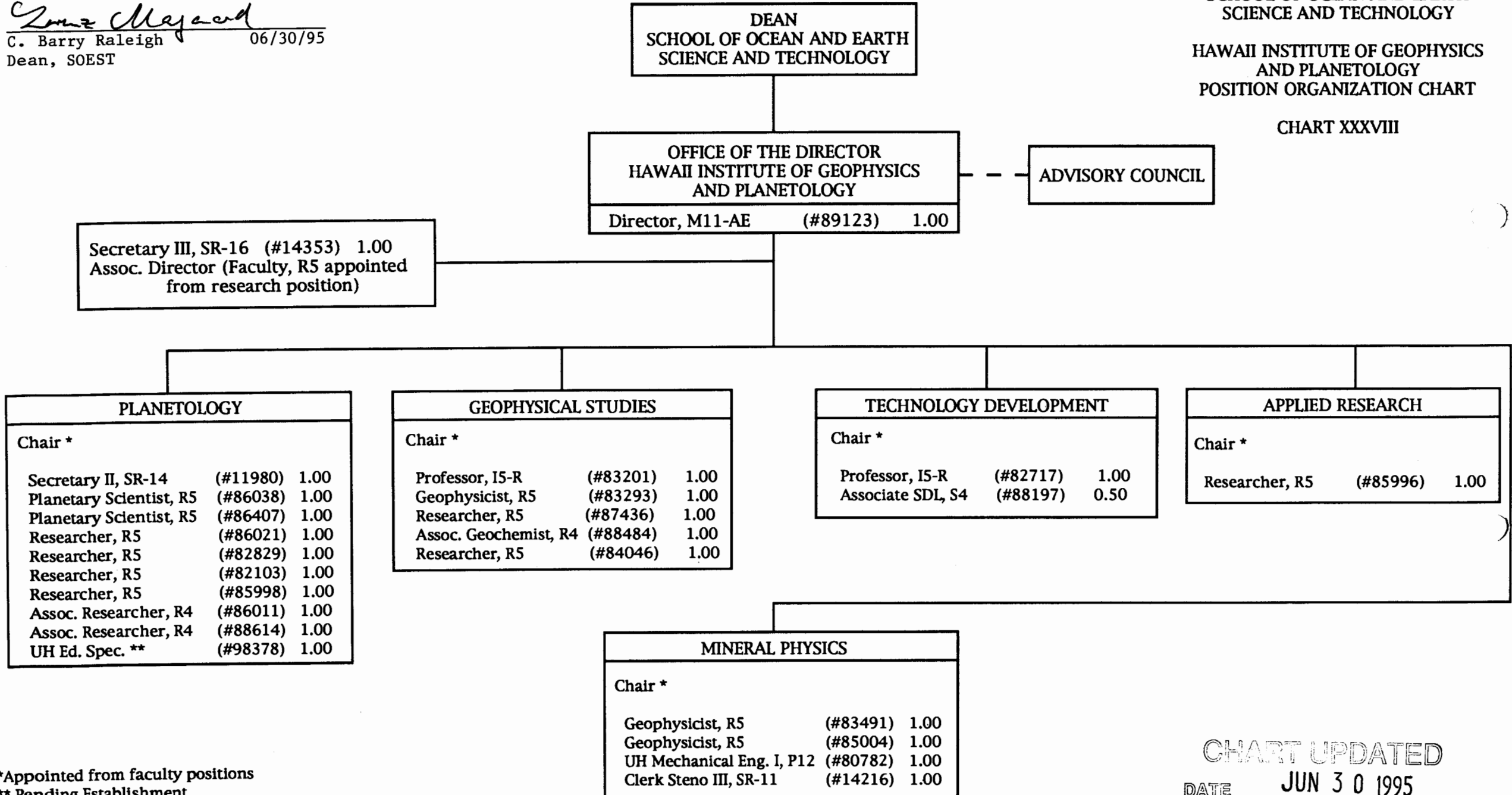
APPROVED:

C. Barry Raleigh 06/30/95  
Dean, SOEST

STATE OF HAWAII  
UNIVERSITY OF HAWAII  
UNIVERSITY OF HAWAII AT MANOA  
SCHOOL OF OCEAN AND EARTH  
SCIENCE AND TECHNOLOGY

HAWAII INSTITUTE OF GEOPHYSICS  
AND PLANETOLOGY  
POSITION ORGANIZATION CHART

CHART XXXVIII



\*Appointed from faculty positions

\*\* Pending Establishment

CHART UPDATED  
DATE JUN 30 1995

STATE OF HAWAII  
UNIVERSITY OF HAWAII  
UNIVERSITY OF HAWAII AT MANOA  
SCHOOL OF OCEAN AND EARTH  
SCIENCE AND TECHNOLOGY

HAWAII NATURAL ENERGY INSTITUTE  
POSITION ORGANIZATION CHART

CHART XXXIX

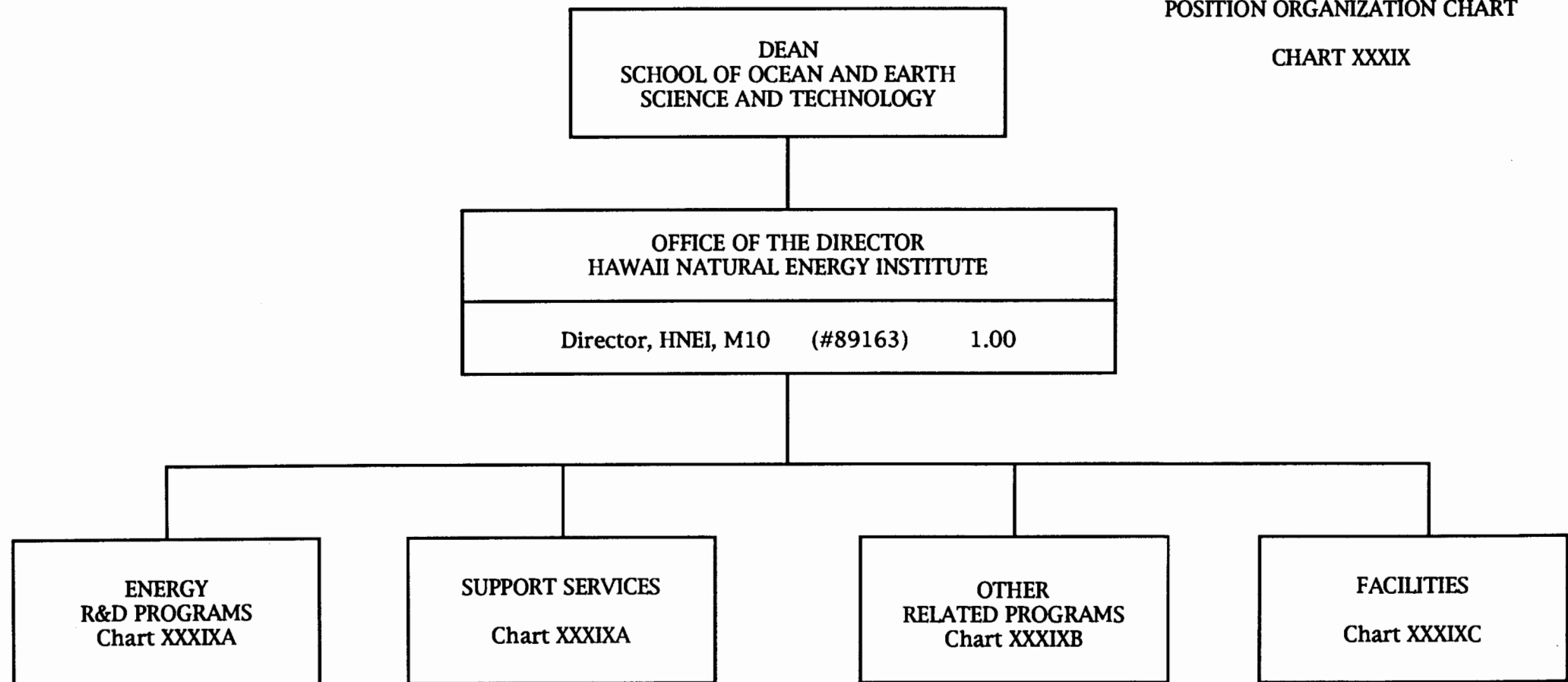


CHART UPDATED  
JUN 30 1995  
DATE \_\_\_\_\_

STATE OF HAWAII  
UNIVERSITY OF HAWAII  
UNIVERSITY OF HAWAII AT MANOA  
SCHOOL OF OCEAN AND EARTH  
SCIENCE AND TECHNOLOGY

HAWAII NATURAL ENERGY INSTITUTE  
POSITION ORGANIZATION CHART

CHART XXXIXA

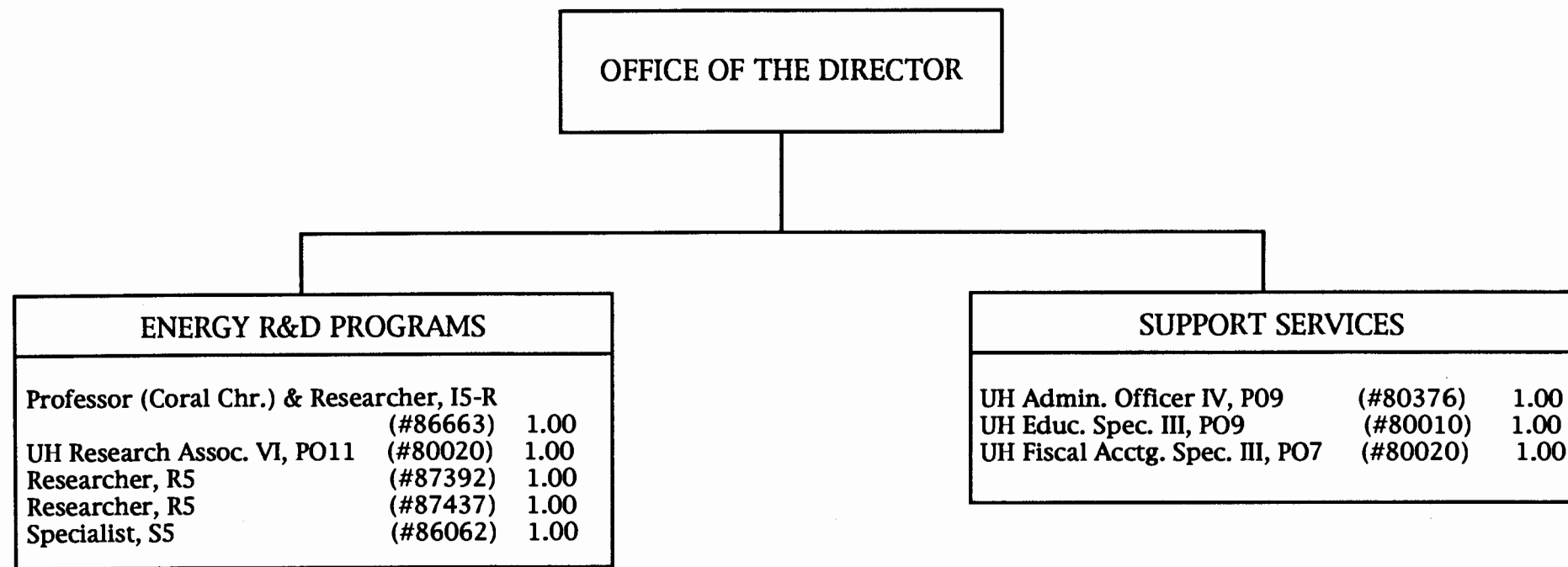


CHART UPDATED  
DATE JUN 30 1995

STATE OF HAWAII  
UNIVERSITY OF HAWAII  
UNIVERSITY OF HAWAII AT MANOA  
SCHOOL OF OCEAN AND EARTH  
SCIENCE AND TECHNOLOGY

HAWAII NATURAL ENERGY INSTITUTE  
POSITION ORGANIZATION CHART

CHART XXXIXB

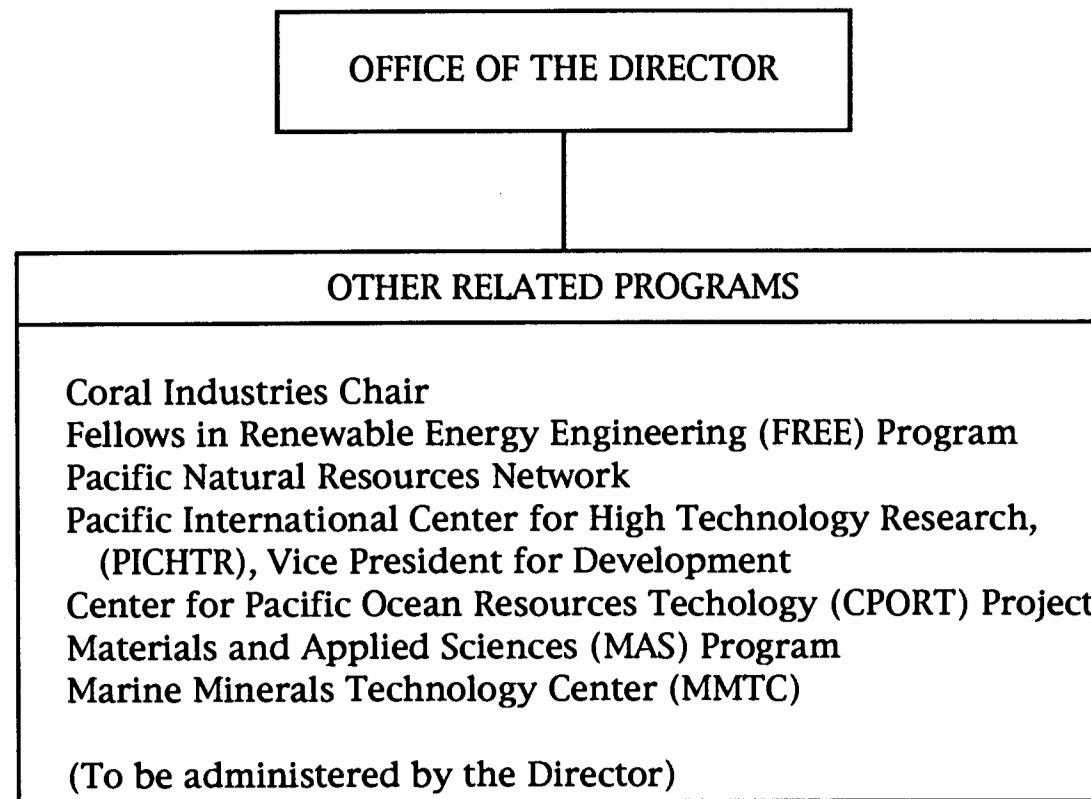
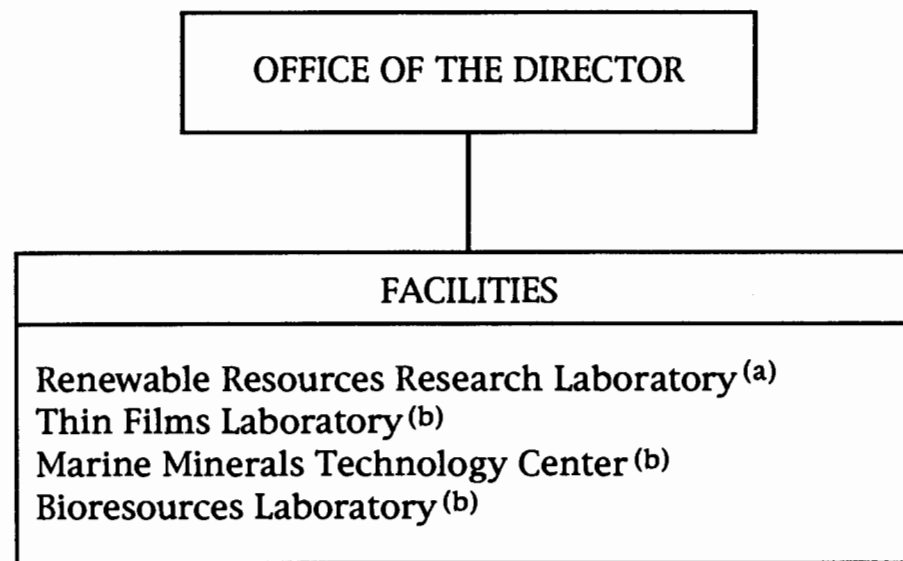


CHART UPDATED  
JUN 30 1995  
DATE \_\_\_\_\_

STATE OF HAWAII  
UNIVERSITY OF HAWAII  
UNIVERSITY OF HAWAII AT MANOA  
SCHOOL OF OCEAN AND EARTH  
SCIENCE AND TECHNOLOGY

HAWAII NATURAL ENERGY INSTITUTE  
POSITION ORGANIZATION CHART

CHART XXXIXC



(a) administered by Coral Chair

(b) administration and research supervisory role

CHART UPDATED  
DATE JUN 30 1995



STATE OF HAWAII  
UNIVERSITY OF HAWAII  
UNIVERSITY OF HAWAII AT MANOA  
SCHOOL OF OCEAN AND EARTH  
SCIENCE AND TECHNOLOGY

SEA GRANT COLLEGE PROGRAM  
ORGANIZATION CHART

CHART XL

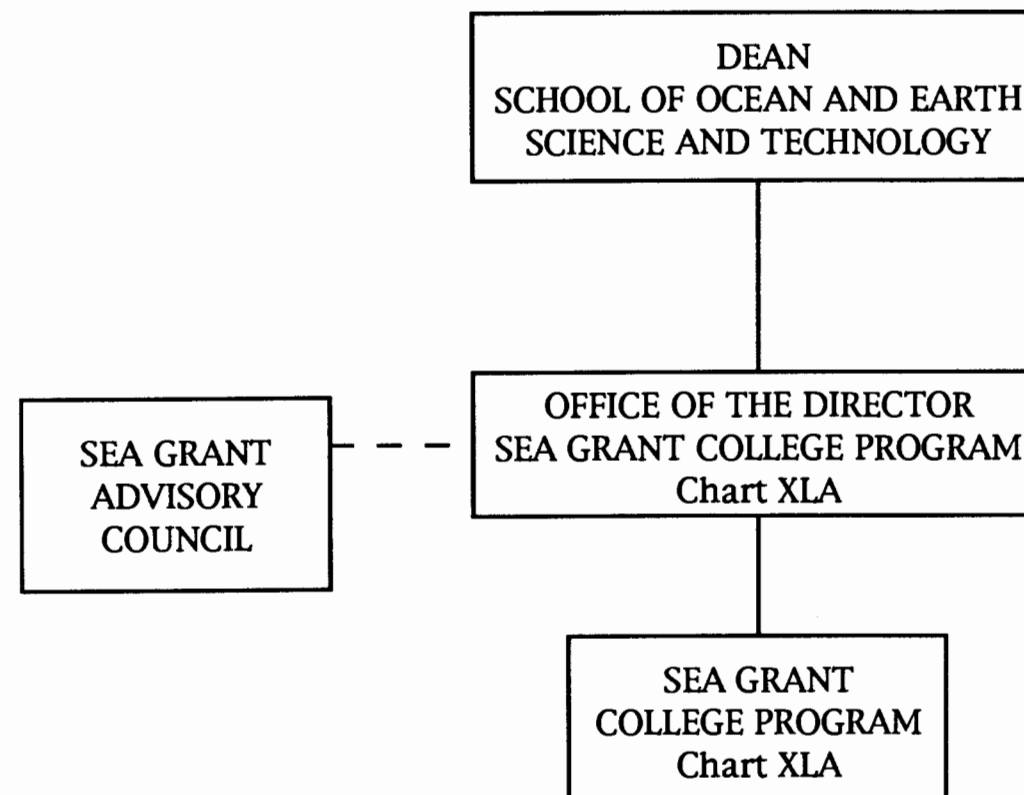


CHART UPDATED  
DATE JUN 30 1995

STATE OF HAWAII  
UNIVERSITY OF HAWAII  
UNIVERSITY OF HAWAII AT MANOA  
SCHOOL OF OCEAN AND EARTH  
SCIENCE AND TECHNOLOGY

SEA GRANT COLLEGE PROGRAM  
POSITION ORGANIZATION CHART

CHART XLA

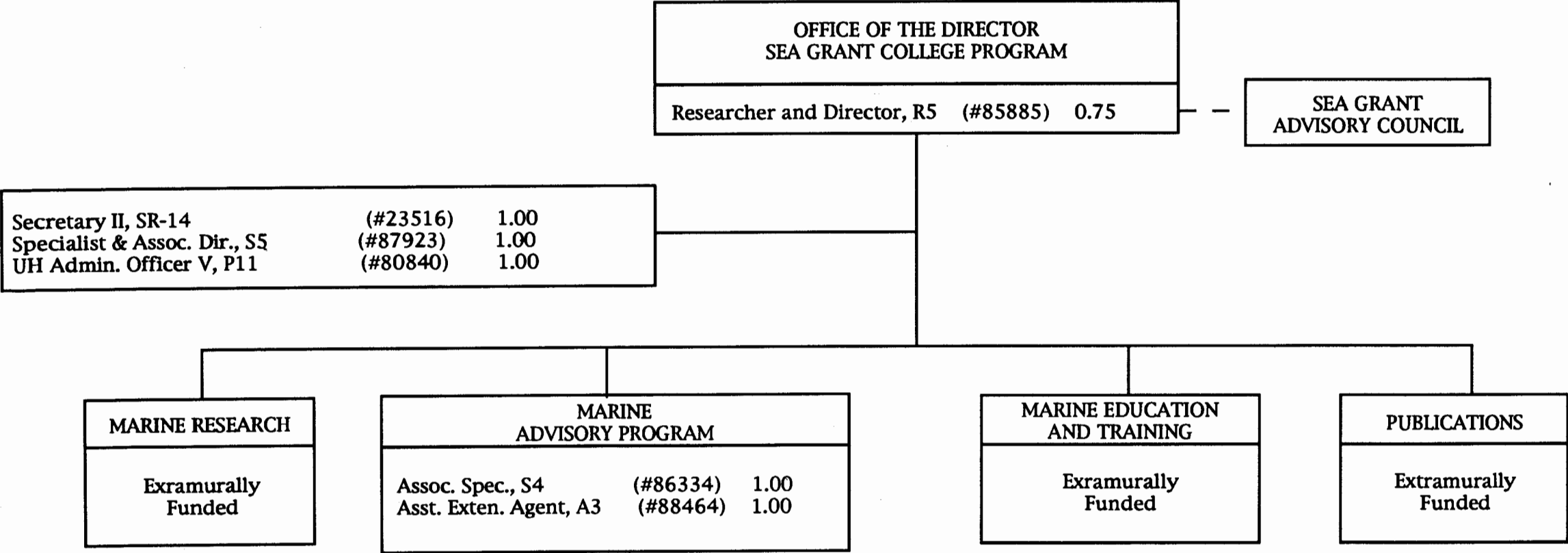


CHART UPDATED  
DATE JUN 30 1995