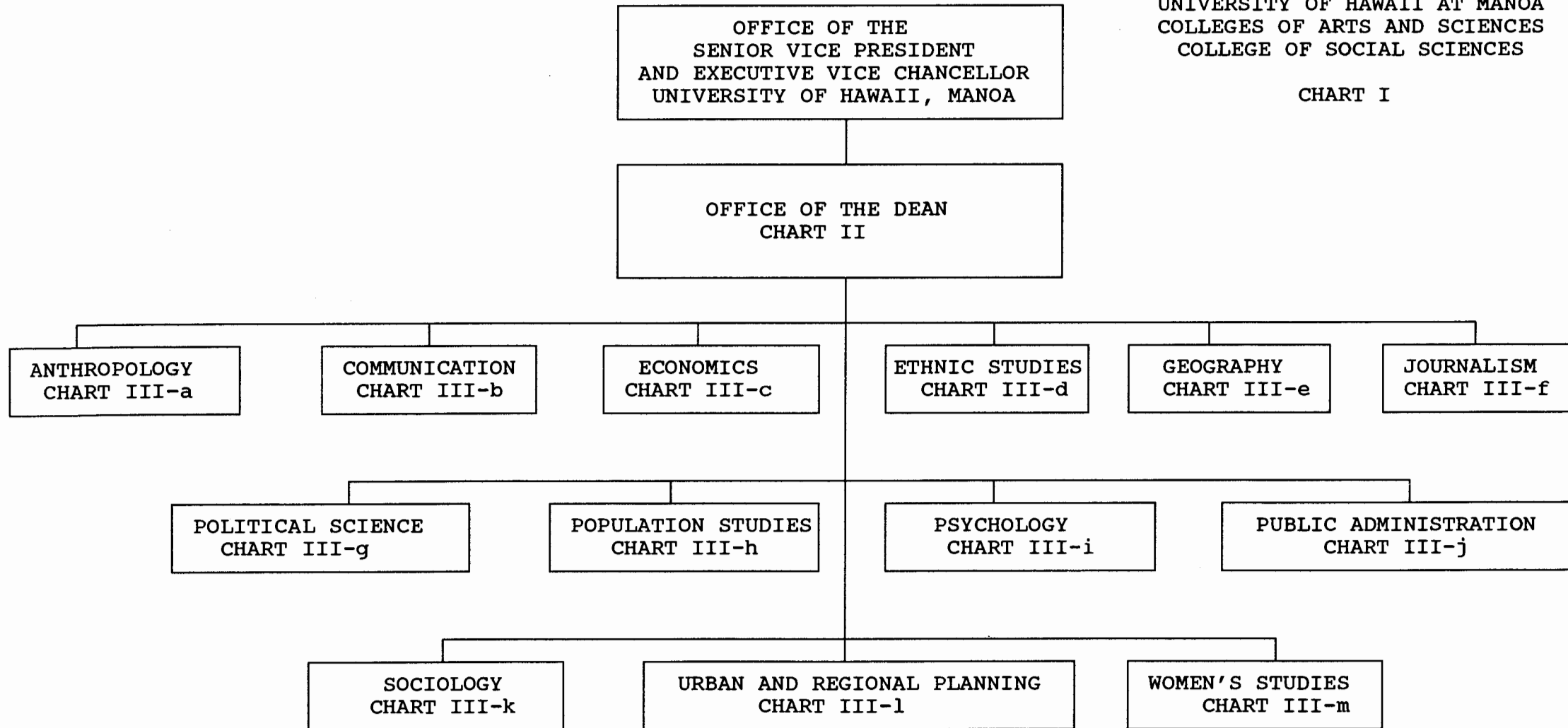


STATE OF HAWAII
UNIVERSITY OF HAWAII
UNIVERSITY OF HAWAII AT MANOA
COLLEGES OF ARTS AND SCIENCES
COLLEGE OF SOCIAL SCIENCES

CHART I



Approved:

R.A. Dubanoski

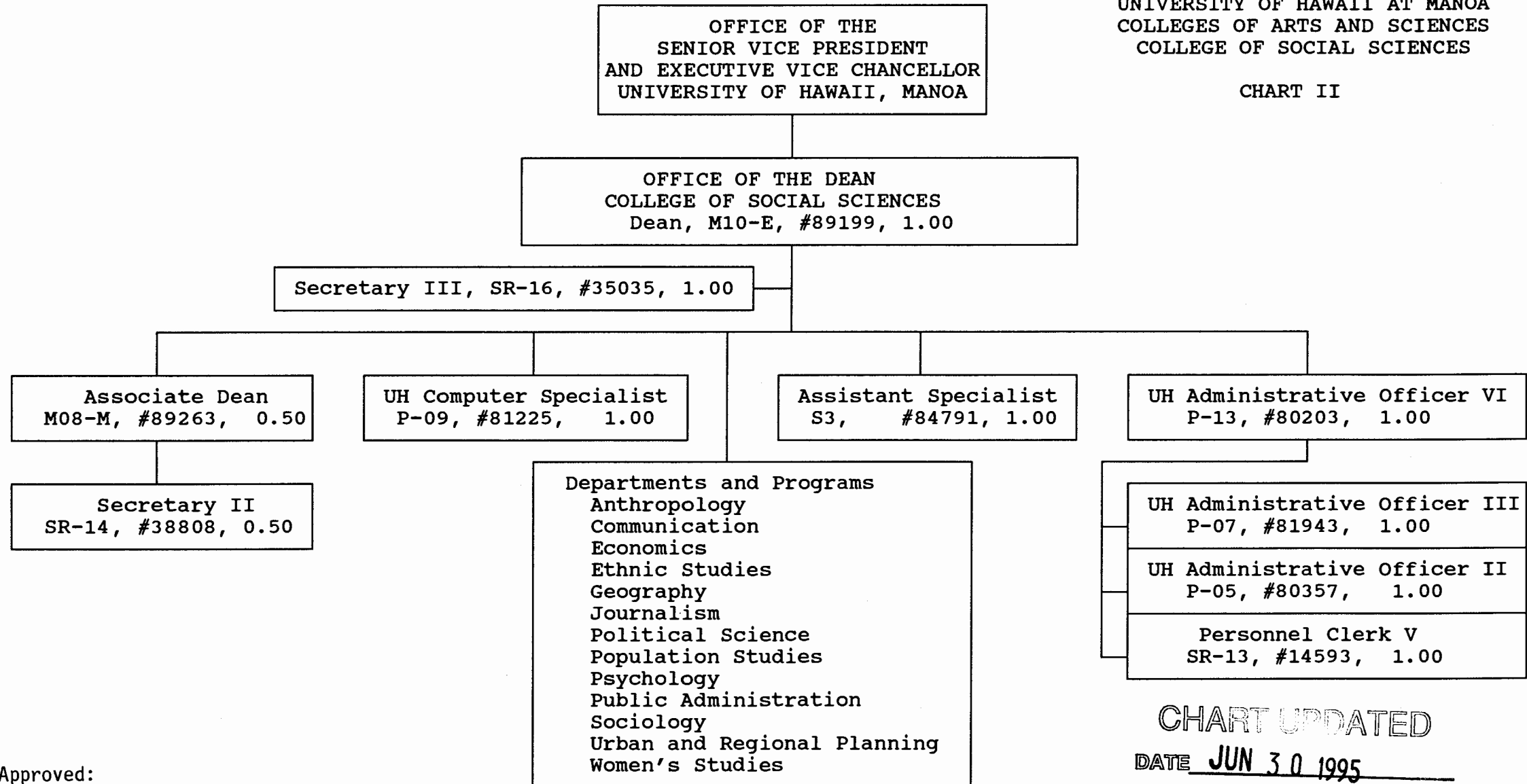
R.A. Dubanoski, Dean
College of Social Sciences
June 30, 1995

CHART UPDATED

DATE JUN 30 1995

STATE OF HAWAII
UNIVERSITY OF HAWAII
UNIVERSITY OF HAWAII AT MANOA
COLLEGES OF ARTS AND SCIENCES
COLLEGE OF SOCIAL SCIENCES

CHART II



Approved:

R.A. Dubanoski

R.A. Dubanoski, Dean
College of Social Sciences
June 30, 1995

STATE OF HAWAII
UNIVERSITY OF HAWAII
UNIVERSITY OF HAWAII AT MANOA
COLLEGES OF ARTS AND SCIENCES
COLLEGE OF SOCIAL SCIENCES

CHART III-a

OFFICE OF THE DEAN

DEPARTMENT OF ANTHROPOLOGY

Chair (appointed from faculty positions)

Secretary II, SR-14, #13482 1.00

UH Student Services Specialist II, P-06, #80639 1.00

UH Educational Specialist II, P-06, #81746 1.00

Faculty Positions: 16.00

Full time: #82188, 82195, 82207, 82534, 82638
82779, 82797, 83004, 83358, 83405
83574, 83924, 84206, 84399, 85082
84804

Graduate Assistants: 3.00

#83831, 83275, 88064, 88367
88529, 88591

22.00

CHART UPDATED
DATE JUN 30 1995

Approved:



R.A. Dubanoski, Dean
College of Social Sciences
June 30, 1995

STATE OF HAWAII
UNIVERSITY OF HAWAII
UNIVERSITY OF HAWAII AT MANOA
COLLEGES OF ARTS AND SCIENCES
COLLEGE OF SOCIAL SCIENCES

CHART III-b

OFFICE OF THE DEAN

DEPARTMENT OF COMMUNICATION

Chair (appointed from faculty positions)

Secretary II, SR-14, #14362 1.00

Clerk-Typist II, SR-08, #48445 1.00

Faculty Positions: 12.00

Full time: #82279, 82280, 82602, 82871, 82905
82982, 83302, 83756, 84217, 84505
88169, 88619

Graduate Assistants: 3.50

#85507, 88210, 88506, 88534, 88581
88607, 88681

17.50

Approved:



R.A. Dubanoski, Dean
College of Social Sciences
June 30, 1995

CHART UPDATED
DATE JUN 30 1995

STATE OF HAWAII
UNIVERSITY OF HAWAII
UNIVERSITY OF HAWAII AT MANOA
COLLEGES OF ARTS AND SCIENCES
COLLEGE OF SOCIAL SCIENCES

CHART III-c

OFFICE OF THE DEAN

DEPARTMENT OF ECONOMICS

Chair (appointed from faculty positions)

Secretary II, SR-14, #15351 1.00

Clerk-Stenographer III, SR-11, #14360 1.00

Faculty Positions: 18.00

Full time: #82286, 82679, 82777, 82838, 83023
83411, 83484, 83748, 83943, 83953
84047, 84054, 84200, 84643, 84815
85027

Part time: #82741, 83611, 83650, 84928

Graduate Assistants: 4.50

#88061, 88175, 88193, 88233, 88248
88262, 88420, 88517, 88631

24.50

CHART UPDATED

DATE JUN 30 1995

Approved:

R.A. Dubanoski

R.A. Dubanoski, Dean
College of Social Sciences
June 30, 1995

STATE OF HAWAII
UNIVERSITY OF HAWAII
UNIVERSITY OF HAWAII AT MANOA
COLLEGES OF ARTS AND SCIENCES
COLLEGE OF SOCIAL SCIENCES

CHART III-d

OFFICE OF THE DEAN

DEPARTMENT OF ETHNIC STUDIES

Director (appointed from faculty positions)

Secretary II, SR-14, #24006

1.00

Faculty Positions:

8.00

Full time: #83195, 85586, 84790, 84805, 84801, 84803, 84807

Part time: #83191, 83738

9.00

Approved:

R.A. Dubanoski

R.A. Dubanoski, Dean
College of Social Sciences
June 30, 1995

CHART UPDATED

DATE JUN 30 1995

STATE OF HAWAII
UNIVERSITY OF HAWAII
UNIVERSITY OF HAWAII AT MANOA
COLLEGES OF ARTS AND SCIENCES
COLLEGE OF SOCIAL SCIENCES

CHART III-e

OFFICE OF THE DEAN

DEPARTMENT OF GEOGRAPHY

Chair (appointed from faculty positions)

Secretary II, SR-14, #14358 1.00

Clerk-Stenographer II, SR-09, #18580 1.00

UH Educational Specialist II, P-06, #80641 1.00

Faculty Positions: 14.25

Full time: #84917, 82332, 82681, 82708, 83935, 82680
84209, 84254, 84518, 84565, 84841, 85298, 82328

Part time: #82338, 83522M

Graduate Assistants: 6.00

#88065, 88103, 88110, 88140, 88189
88217, 88232, 88391, 88416, 88446,
84864, 88620

23.25

CHART UPDATED
JUN 30 1995

DATE

Approved:

R.A. Dubanoski

R.A. Dubanoski, Dean
College of Social Sciences
June 30, 1995

STATE OF HAWAII
UNIVERSITY OF HAWAII
UNIVERSITY OF HAWAII AT MANOA
COLLEGES OF ARTS AND SCIENCES
COLLEGE OF SOCIAL SCIENCES

CHART III-f

OFFICE OF THE DEAN

DEPARTMENT OF JOURNALISM

Chair (appointed from faculty positions)

Secretary II, SR-12, #13807

1.00

Faculty Positions:

8.00

Full time: #82500, 82611, 82946, 83458
84115, 84478, 84972, 84809

9.00

CHART UPDATED

DATE JUN 30 1995

Approved:

R.A. Dubanoski

R.A. Dubanoski, Dean
College of Social Sciences
June 30, 1995

STATE OF HAWAII
UNIVERSITY OF HAWAII
UNIVERSITY OF HAWAII AT MANOA
COLLEGES OF ARTS AND SCIENCES
COLLEGE OF SOCIAL SCIENCES

CHART III-g

OFFICE OF THE DEAN

DEPARTMENT OF POLITICAL SCIENCE

Chair (appointed from faculty positions)

Secretary II, SR-14, #11112 1.00

Clerk-Stenographer II, SR-09, #14363 1.00

Clerk-Stenographer II, SR-09, #21775 1.00

Faculty Positions: 23.00

Full time: #82145, 82278, 82317, 82672, 82823
82913, 83085, 83162, 83194, 83197
83311, 83370, 83621, 83753, 83858
84023, 84042, 84109, 84130, 84234
84556, 84800

Part time: #83277, 83778, 84059, 88549

Graduate Assistants: 3.50

#88076, 88090, 88238, 88336, 88407
88676, 84880

29.50

CHART UPDATED

DATE JUN 30 1995

Approved:

R.A. Dubanoski

R.A. Dubanoski, Dean
College of Social Sciences
June 30, 1995

STATE OF HAWAII
UNIVERSITY OF HAWAII
UNIVERSITY OF HAWAII AT MANOA
COLLEGES OF ARTS AND SCIENCES
COLLEGE OF SOCIAL SCIENCES

CHART III-h

OFFICE OF THE DEAN

POPULATION STUDIES PROGRAM

Director (appointed from faculty positions)	.00
---	-----

0.00

Approved:

R.A. Dubanoski
R.A. Dubanoski, Dean
College of Social Sciences
June 30, 1995

CHART UPDATED
DATE JUN 30 1995

STATE OF HAWAII
UNIVERSITY OF HAWAII
UNIVERSITY OF HAWAII AT MANOA
COLLEGES OF ARTS AND SCIENCES
COLLEGE OF SOCIAL SCIENCES

OFFICE OF THE DEAN

CHART III-i

DEPARTMENT OF PSYCHOLOGY

Chair (appointed from faculty positions)
Director, Clinical Studies (appointed from faculty positions)

Secretary II, SR-14, #12856	1.00
Clerk-Stenographer III, SR-11, #19052	1.00
Clerk-Stenographer II, SR-09, #21971	1.00
UH Educational Specialist III, P-09, #80638	1.00

Faculty Positions:	25.75
--------------------	-------

Full time: #82198, 82294, 82398, 82412, 82471, 82537, 82564
82615, 82916, 83092, 83110, 83507, 83626, 84131
84225, 84346, 84416, 84491, 84497, 84827, 84866
85075, 88005

Part time: #82192, 83799, 84319, 84861M, 84810, 83498

Graduate Assistants:	3.75
#85148, 88046, 88060, 88252, 88320, 88362, 88511 88559	-----

33.50

CHART UPDATED
JUN 30 1995

Approved:

R.A. Dubanoski

R.A. Dubanoski, Dean
College of Social Sciences
June 30, 1995

STATE OF HAWAII
UNIVERSITY OF HAWAII
UNIVERSITY OF HAWAII AT MANOA
COLLEGES OF ARTS AND SCIENCES
COLLEGE OF SOCIAL SCIENCES

CHART III-j

OFFICE OF THE DEAN

PUBLIC ADMINISTRATION PROGRAM

Director (appointed from faculty positions)

Faculty Positions:

4.00

Full time: #84788, 84789, 84797, 84798

4.00

Approved:

R.A. Dubanoski

R.A. Dubanoski, Dean
College of Social Sciences
June 30, 1995

CHART UPDATED
DATE JUN 30 1995

STATE OF HAWAII
UNIVERSITY OF HAWAII
UNIVERSITY OF HAWAII AT MANOA
COLLEGES OF ARTS AND SCIENCES
COLLEGE OF SOCIAL SCIENCES

CHART III-k

OFFICE OF THE DEAN

DEPARTMENT OF SOCIOLOGY

Chair (appointed from faculty positions)

Secretary II, SR-14, #13485 1.00

Clerk-Stenographer II, SR-09, #16953 1.00

UH Educational Specialist II, P-06, #80640 1.00

Faculty Positions: 19.00

Full time: #82097, 82114, 82125, 82204, 82323, 82605
83050, 83164, 83867, 84076, 84121, 84237
84286, 84456, 84502, 84504, 84575, 84616
84642

Graduate Assistants: 5.50

#88008, 88100, 88182, 88208, 88268, 88408
88485, 88498, 88533, 88616, 88392

27.50

CHART UPDATED

DATE JUN 30 1995

Approved:

R.A. Dubanoski

R.A. Dubanoski, Dean
College of Social Sciences
June 30, 1995

STATE OF HAWAII
UNIVERSITY OF HAWAII
UNIVERSITY OF HAWAII AT MANOA
COLLEGES OF ARTS AND SCIENCES
COLLEGE OF SOCIAL SCIENCES

CHART III-1

OFFICE OF THE DEAN

DEPARTMENT OF URBAN AND REGIONAL PLANNING

Chair (appointed from faculty positions)	
Secretary II, SR-14, #15640	1.00
Faculty Positions:	6.00
Full time: #82539, 83624, 84060, 84522, 85736, 82377	

	7.00

CHART UPDATED
DATE JUN 30 1995

Approved:

R.A. Dubanoski

R.A. Dubanoski, Dean
College of Social Sciences
June 30, 1995

STATE OF HAWAII
UNIVERSITY OF HAWAII
UNIVERSITY OF HAWAII AT MANOA
COLLEGES OF ARTS AND SCIENCES
COLLEGE OF SOCIAL SCIENCES

CHART III-m

OFFICE OF THE DEAN

WOMEN'S STUDIES PROGRAM

Director (appointed from faculty positions)

Secretary II, SR-14, #31328 .75

Faculty Positions: 4.25

Full time: #82870, 86071

Part time: #82318, 84034M, 84057M,
85962, 86070.

5.00

CHART UPDATED

DATE JUN 30 1995

Approved:

R.A. Dubanoski
R.A. Dubanoski, Dean
College of Social Sciences
June 30, 1995