

STATE OF HAWAII
UNIVERSITY OF HAWAII
UNIVERSITY OF HAWAII AT MANOA
COLLEGE OF TROPICAL AGRICULTURE & HUMAN RESOURCES
ORGANIZATIONAL CHART
CHART I

CHART UPDATED
DATE JUN 30 1995

*& Director of Cooperative Science & Education

STATE OF HAWAII
UNIVERSITY OF HAWAII
UNIVERSITY OF HAWAII AT MANOA
COLLEGE OF TROPICAL AGRICULTURE & HUMAN RESOURCES

OFFICE OF THE DEAN
CHART II

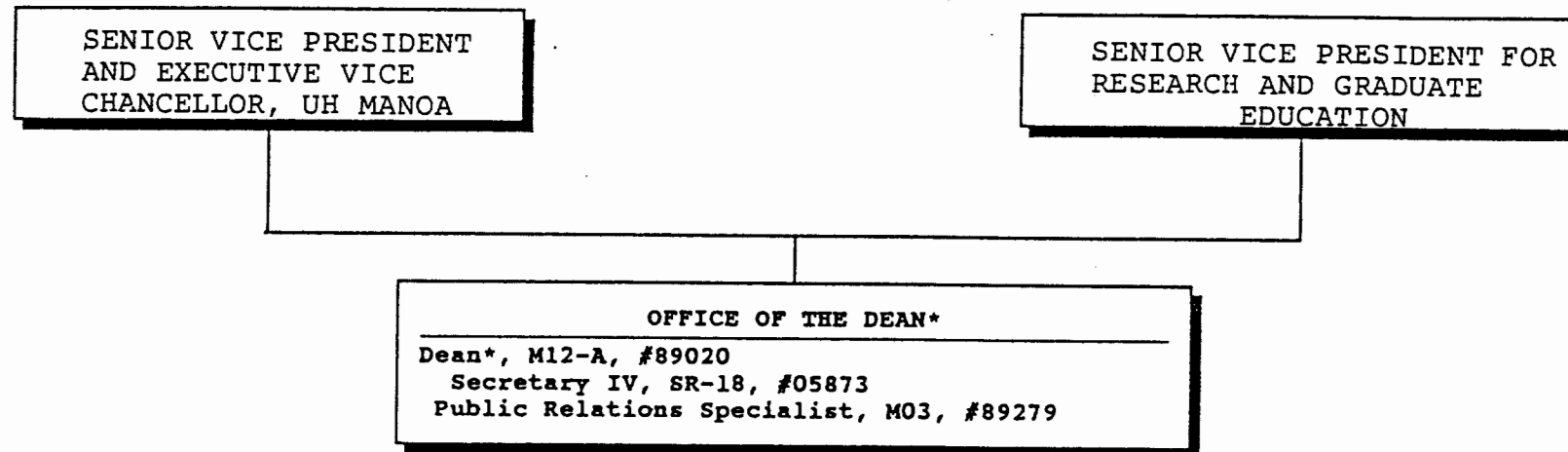
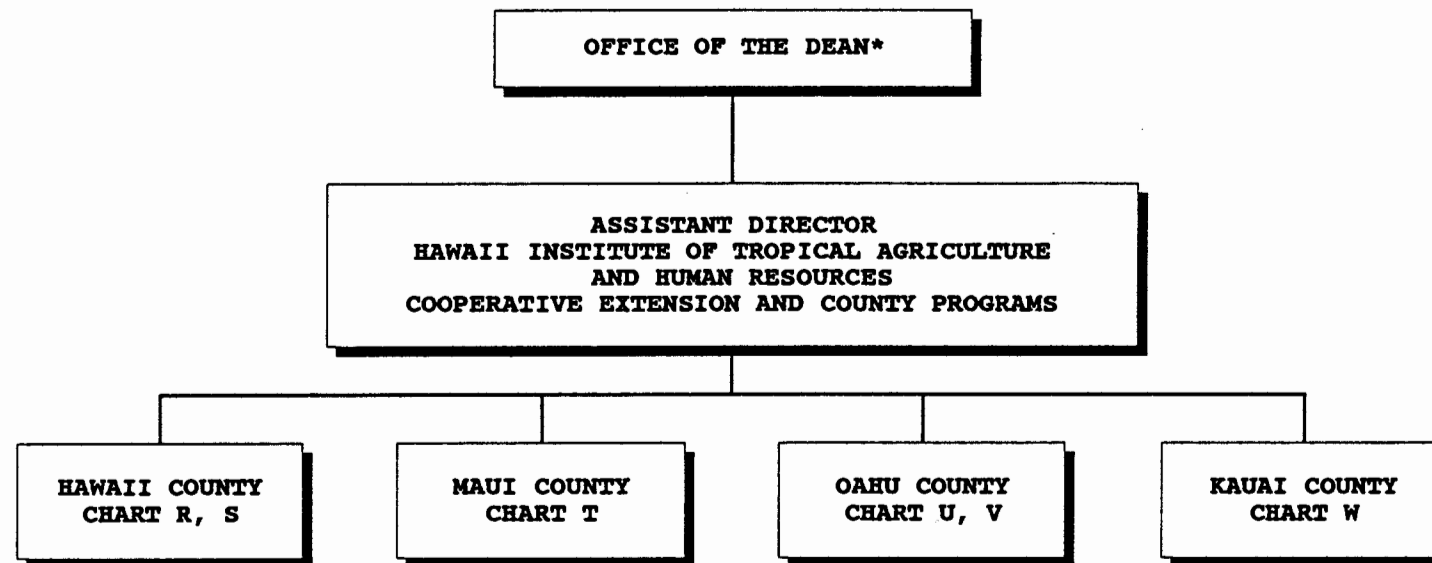


CHART UPDATED
DATE JUN 30 1995

* & Director of Cooperative Science & Education

STATE OF HAWAII
UNIVERSITY OF HAWAII
UNIVERSITY OF HAWAII AT MANOA
COLLEGE OF TROPICAL AGRICULTURE & HUMAN RESOURCES

HAWAII INSTITUTE OF TROPICAL AGRICULTURE & HUMAN RESOURCES
COUNTY ADMINISTRATION
CHART III



* & Director of Cooperative Science & Education

CHART UPDATED
DATE JUN 30 1995

STATE OF HAWAII
UNIVERSITY OF HAWAII
UNIVERSITY OF HAWAII AT MANOA
COLLEGE OF TROPICAL AGRICULTURE & HUMAN RESOURCES

OFFICE OF PUBLICATIONS AND INFORMATION
CHART IV

OFFICE OF THE DEAN*

OFFICE OF PUBLICATIONS AND INFORMATION

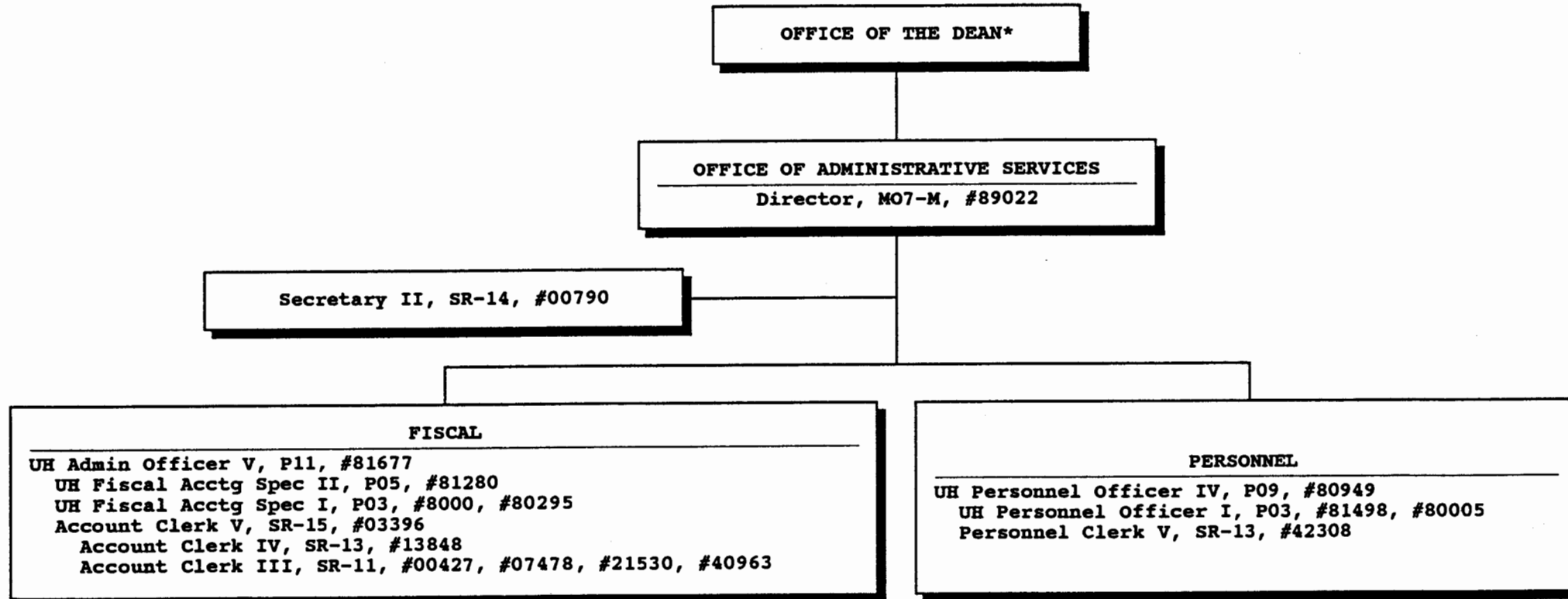
UH Public Information Office III, P12, #81436
Asst Spec, S3, #83136
UH Editor III, P07, #81391
Information Spec III, SR-20, #00788
Public Editor III, SR-20, #03617
Clerk-Steno III, SR-11, #18008
Clerk-Typist II, SR-08, #00804
Clerk III, SR-08, #05182

* & Director of Cooperative Science & Education

CHART UPDATED
DATE JUN 30 1995

STATE OF HAWAII
UNIVERSITY OF HAWAII
UNIVERSITY OF HAWAII AT MANOA
COLLEGE OF TROPICAL AGRICULTURE & HUMAN RESOURCES

OFFICE OF ADMINISTRATIVE SERVICES
CHART V

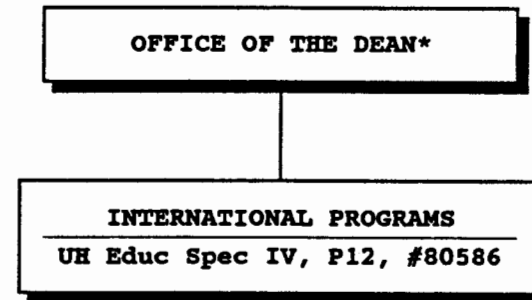


*& Director of Cooperative Science & Education

CHART UPDATED
JUN 30 1995
DATE _____

STATE OF HAWAII
UNIVERSITY OF HAWAII
UNIVERSITY OF HAWAII AT MANOA
COLLEGE OF TROPICAL AGRICULTURE & HUMAN RESOURCES

OFFICE OF INTERNATIONAL PROGRAMS
CHART VI

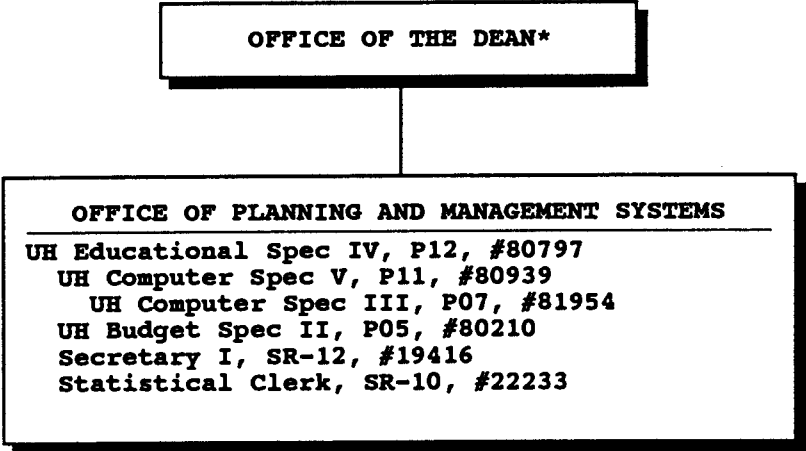


* & Director of Cooperative Science & Education

CHART UPDATED
DATE 'JUN 30 1995

STATE OF HAWAII
UNIVERSITY OF HAWAII
UNIVERSITY OF HAWAII AT MANOA
COLLEGE OF TROPICAL AGRICULTURE & HUMAN RESOURCES

OFFICE OF PLANNING AND MANAGEMENT SYSTEMS
CHART VII

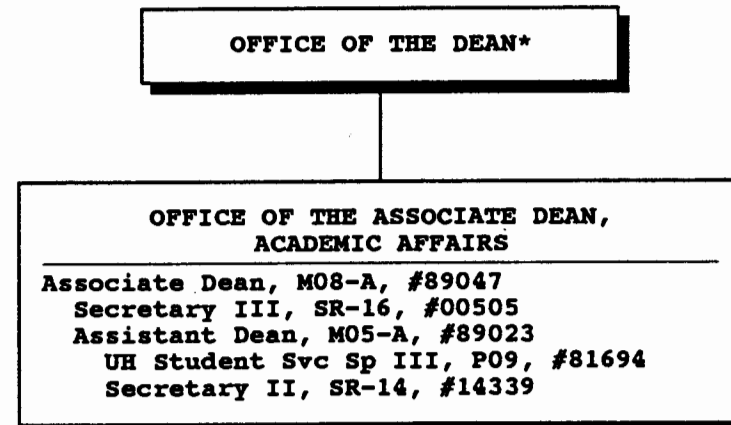


* & Director of Cooperative Science & Education

CHART UPDATED
DATE JUN 30 1995

STATE OF HAWAII
UNIVERSITY OF HAWAII
UNIVERSITY OF HAWAII AT MANOA
COLLEGE OF TROPICAL AGRICULTURE & HUMAN RESOURCES

OFFICE OF THE ASSOCIATE DEAN, ACADEMIC AFFAIRS
CHART VIII



* & Director of Cooperative Science & Education

CHART UPDATED
DATE JUN 30 1995

STATE OF HAWAII
UNIVERSITY OF HAWAII
UNIVERSITY OF HAWAII AT MANOA
COLLEGE TROPICAL AGRICULTURE & HUMAN RESOURCES

OFFICE OF THE DIRECTOR, HITAHR
CHART IX

OFFICE OF THE DEAN*

OFFICE OF THE DIRECTOR
HAWAII INSTITUTE OF TROPICAL AGRICULTURE & HUMAN RESOURCES

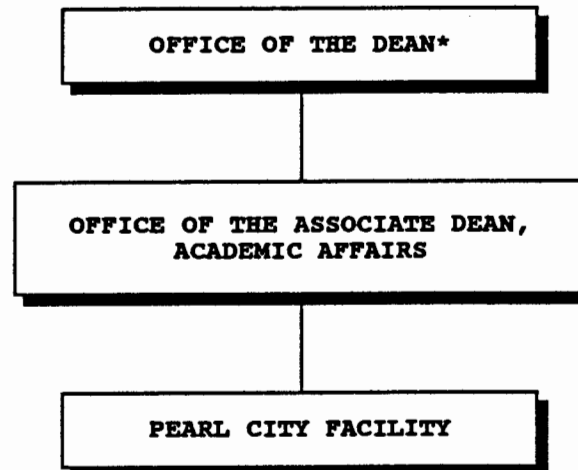
Director, HITAHR, M11-A, #89124
Secretary III, SR-16, #00425
Clerk-Steno III, SR-11, #03397 (.50)
Clerk-Typist II, SR-08, #42680
Asst Dir, HITAHR, (Agriculture & Applied Behavioral Sciences
Research), M05-A, #89186
Secretary II, SR-14, #22831
Asst Dir, HITAHR, (Agriculture & Resource Development),
M05-A, #89017
Secretary II, SR-14, #22932
Asst Dir, HITAHR, (Cooperative Extension and County Programs),
M05-A, #89069
Asst Extension Agent, A-3, #85476
Clerk-Typist II, SR-08, #17592
Secretary II, SR-14, #00789

* & Director of Cooperative Science & Education

CHART UPDATED
DATE JUN 30 1995'

STATE OF HAWAII
UNIVERSITY OF HAWAII
UNIVERSITY OF HAWAII AT MANOA
COLLEGE OF TROPICAL AGRICULTURE & HUMAN RESOURCES

PEARL CITY FACILITY
POSITION ORGANIZATION CHART: A

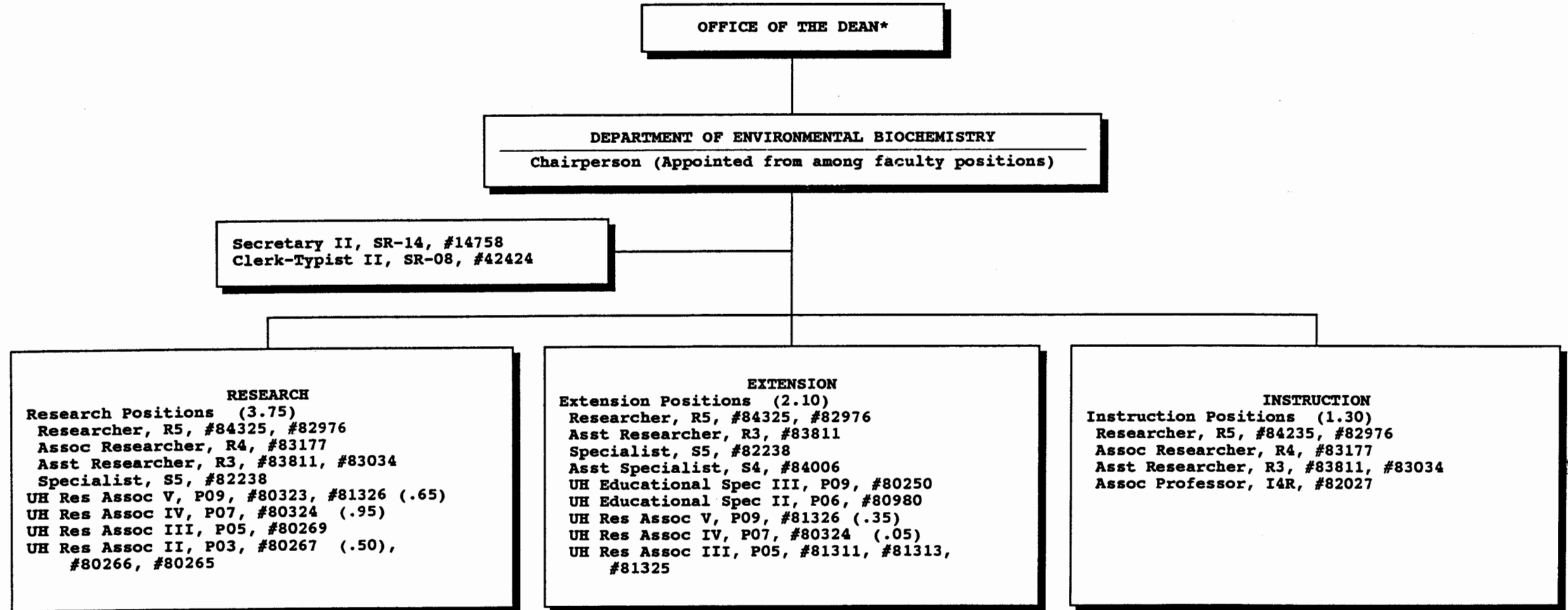


*& Director of Cooperative Science & Education

CHART UPDATED
DATE JUN 30 1995

STATE OF HAWAII
UNIVERSITY OF HAWAII
UNIVERSITY OF HAWAII AT MANOA
COLLEGE OF TROPICAL AGRICULTURE & HUMAN RESOURCES

DEPARTMENT OF ENVIRONMENTAL BIOCHEMISTRY
POSITION ORGANIZATION CHART: B



* & Director of Cooperative Science & Education

CHART UPDATED
DATE JUN 30 1995'

STATE OF HAWAII
UNIVERSITY OF HAWAII
UNIVERSITY OF HAWAII AT MANOA
COLLEGE OF TROPICAL AGRICULTURE & HUMAN RESOURCES

DEPARTMENT OF BIOSYSTEMS ENGINEERING
POSITION ORGANIZATION CHART: C

OFFICE OF THE DEAN*

DEPARTMENT OF BIOSYSTEMS ENGINEERING
Chairperson (Appointed from among faculty positions)

Secretary II, SR-14, #12960
Clerk-Typist II, SR-08, #45478

RESEARCH
Research Positions (6.20)
Researcher, R5, #83399, #84477
#84600, #84631, #82848
Assoc Researcher, R4, #83022
Asst Researcher, R3, #84193
Asst Professor, I3R, #82919
Graduate Assistant, GA-R, #88219 (.50)
UH Mechanical Engineer I, P-12,
#80784 (.75)
Agr Eqp Dev Wkg Supv, WB-13, #05729
Agr Lab Tech I, WB-12, #05730

EXTENSION
Extension Positions (1.75)
Researcher, R5, #83399, #84477,
#84600, #84631
Asst Researcher, R3, #84193
Specialist, S5, #82758
UH Research Associate I, P-12,
#80784 (.25)

INSTRUCTION
Instruction Positions (2.05)
Researcher, R5, #83399, #84477,
#84600, #84631, #82848
Assoc Researcher, R4, #83022
Asst Researcher, R3, #84193
Specialist, S5, #82758
Asst Professor, I3R, #82919
Graduate Assistant, GA, #88630 (.50)

* & Director of Cooperative Science & Education

CHART UPDATED
DATE JUN 30 1995

STATE OF HAWAII
UNIVERSITY OF HAWAII
UNIVERSITY OF HAWAII AT MANOA
COLLEGE OF TROPICAL AGRICULTURE & HUMAN RESOURCES

DEPARTMENT OF AGRICULTURAL & RESOURCE ECONOMICS
POSITION ORGANIZATION CHART: D

OFFICE OF THE DEAN*

DEPARTMENT OF AGRICULTURAL & RESOURCE ECONOMICS
Chairperson (Appointed from among faculty positions)

Secretary II, SR-14, #07872
Acct Clerk II, SR-08, #00795
Clerk-Typist II, SR-08, #25104

RESEARCH

Research Positions: (10.05)
Researcher, R5, #84915, #84114, #84128,
#83184, #84120, #82772
Assoc Researcher, R4, #84216
Asst Researcher, R3, #83921, #83012,
#84449
Assoc Specialist, S4, #82058, #84872,
#82107
Professor, I5R, #84627
Assoc Professor, I4R, #84928
Graduate Assistant
GA-R, #88494 (.50)
GA-R, #88431 (.50)

EXTENSION

Extension Positions: (4.85)
Researcher, R5, #84915, #85885, #84128,
#83184, #84120
Asst Researcher, R3, #84449, #84552
Assoc Specialist, S4, #82058,
#82554, #82107
Assoc Professor, I4R, #84928
Asst Specialist, S3, #83515

INSTRUCTION

Instructional Positions: (2.25)
Researcher, R5, #84915, #84114, #85885,
#82772, #84128, #83184
Assoc Researcher, R4, #84216
Asst Researcher, R3, #82732, #83921,
#84449, #83012
Assoc Specialist, S4, #82058, #84872,
#82107, #82554
Professor, I5R, #84627
Assoc Professor, I4R, #84928

* & Director of Cooperative Science & Education

CHART UPDATED
DATE JUN 30 1995

STATE OF HAWAII
UNIVERSITY OF HAWAII
UNIVERSITY OF HAWAII AT MANOA
COLLEGE OF TROPICAL AGRICULTURE & HUMAN RESOURCES

DEPARTMENT OF AGRONOMY & SOIL SCIENCE
POSITION ORGANIZATION CHART: E

OFFICE OF THE DEAN*

DEPARTMENT OF AGRONOMY & SOIL SCIENCE
Chairperson (Appointed from among faculty positions)

Secretary II, SR-14, #05838
Clerk-Steno III, SR-11, #03397 (.50)
Clerk-Typist II, SR-08, #42681

RESEARCH

Research Positions: (9.70)
Researcher, R5, #82598, #84052, #82792,
#84171, #84408, #82127, #83938,
#83046
Assoc Researcher, R4, #83117, #83260,
#84420, #83149, #82516
Asst Researcher, R3, #83629, #84080
Agr Res Tech V, SR-16, #11020
Agr Res Tech IV, SR-14, #00398

EXTENSION

Extension Positions: (2.00)
Researcher, R5, #82598, #82127,
#83046
Asst Specialist, S3, #83785, #84488

INSTRUCTION

Instructional Positions: (3.55)
Researcher, R5, #82598, #84052, #82792,
#84171, #84408, #82127, #83938,
#83046
Assoc Researcher, R4, #83117, #83260,
#84420, #83149
Asst Researcher, R3, #84080, #83629
Asst Specialist, S3, #83785, #84354,
#84488
Graduate Assistant, GA, #88038,
#88028 (.50)

* & Director of Cooperative Science & Education

CHART UPDATED
DATE JUN 30 1995

STATE OF HAWAII
UNIVERSITY OF HAWAII
UNIVERSITY OF HAWAII AT MANOA
COLLEGE OF TROPICAL AGRICULTURE & HUMAN RESOURCES

DEPARTMENT OF ANIMAL SCIENCES
POSITION ORGANIZATION CHART: F

OFFICE OF THE DEAN*

DEPARTMENT OF ANIMAL SCIENCES

Chairperson (Appointed from among faculty positions)

Secretary II, SR-14, #00801
Clerk-Typist II, SR-08, #00424, #42682

RESEARCH

Research Positions: (4.95)

Researcher, R5, #83862, #84454,
#83735, #84049

Assoc Researcher, R4, #82248, #84496,
#84228, #84070

Asst Researcher, R3, #83633

Assoc Specialist, S4, #83830, #84323

Asst Specialist, S4, #83553, #83017

Graduate Assistant, GA-R, #88303 (.50)

UH Res Assoc V, P09, #80410

UH Res Assoc IV, P07, #80392

UH Computer Spec IV, P09, #80037 (.30)

Agr Res Tech VI, SR-18, #00428

Agr Res Tech V, SR-16, #00395, #00396
#00432, #11024

Agr Res Tech IV, SR-14, #00412, #00433

Agr Res Tech III, SR-11, #00401, #00418,
#00420, #03712, #00434

Agr Res Aid II, SR-9, #00410, #00441,
#04481, #04484, #15515

Equipment Operator III, WB-09, #00419

EXTENSION

Extension Positions: (3.85)

Researcher, R5,

Assoc Researcher, R4, #83070, #84496,
#82248

Asst Researcher, R3, #83633

Assoc Specialist, S4, #83830, #84323

Asst Specialist, S3, #83017, #83553

UH Computer Spec IV, P09, #80037 (.70)

INSTRUCTION

Instructional Positions: (2.85)

Researcher, R5, #83862, #84454,
#83735, #84049

Assoc Researcher, R4, #82248, #84496
#84228, #84070

Asst Researcher, R3, #83633

Assoc Specialist, R4, #83830, #84323

Asst Specialist, R3, #83017, #83553

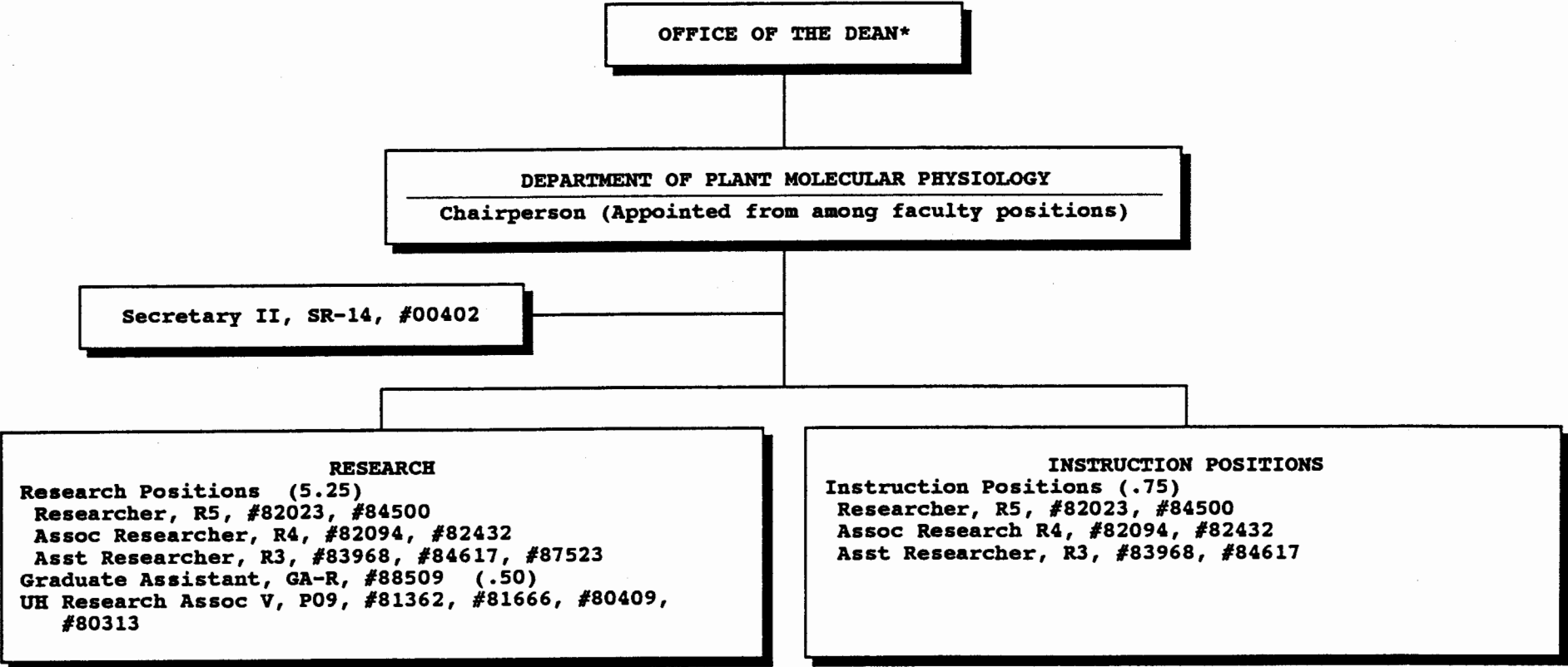
Graduate Assistant, GA, #88165

* & Director of Cooperative Science & Education

CHART UPDATED
DATE JUN 30 1995

STATE OF HAWAII
UNIVERSITY OF HAWAII
UNIVERSITY OF HAWAII AT MANOA
COLLEGE OF TROPICAL AGRICULTURE & HUMAN RESOURCES

DEPARTMENT OF PLANT MOLECULAR PHYSIOLOGY
POSITION ORGANIZATION CHART: G



* & Director of Cooperative Science & Education

CHART UPDATED
DATE JUN 30 1995

STATE OF HAWAII
UNIVERSITY OF HAWAII
UNIVERSITY OF HAWAII AT MANOA
COLLEGE OF TROPICAL AGRICULTURE & HUMAN RESOURCES

DEPARTMENT OF ENTOMOLOGY
POSITION ORGANIZATION CHART: H

OFFICE OF THE DEAN*

DEPARTMENT OF ENTOMOLOGY

Chairperson (Appointed from among faculty positions)

Secretary II, SR-14, #07477
Clerk-Steno II, SR-09, #15509
Clerk-Typist II, SR-08, #16026

RESEARCH

Research Positions: (4.75)

Researcher, R5, #82139, #82327, #82865,
#82866, #83767
Assoc Researcher, R4, #83744, #84138,
#85510, #84316
Specialist, S5, #83320
Asst Specialist, S3, #82550
Graduate Assistant, GA-R, #88576 (.50)
Graduate Assistant, GA-R, #88643 (.50)
UH Research Assoc V, P09, #80388 (.85),
#80386

EXTENSION

Extension Positions: (1.00)

Researcher, R5, #82139
Specialist, S5, #83320
UH Res Assoc V, P09, #80388 (.15)

INSTRUCTION

Instructional Positions: (2.10)

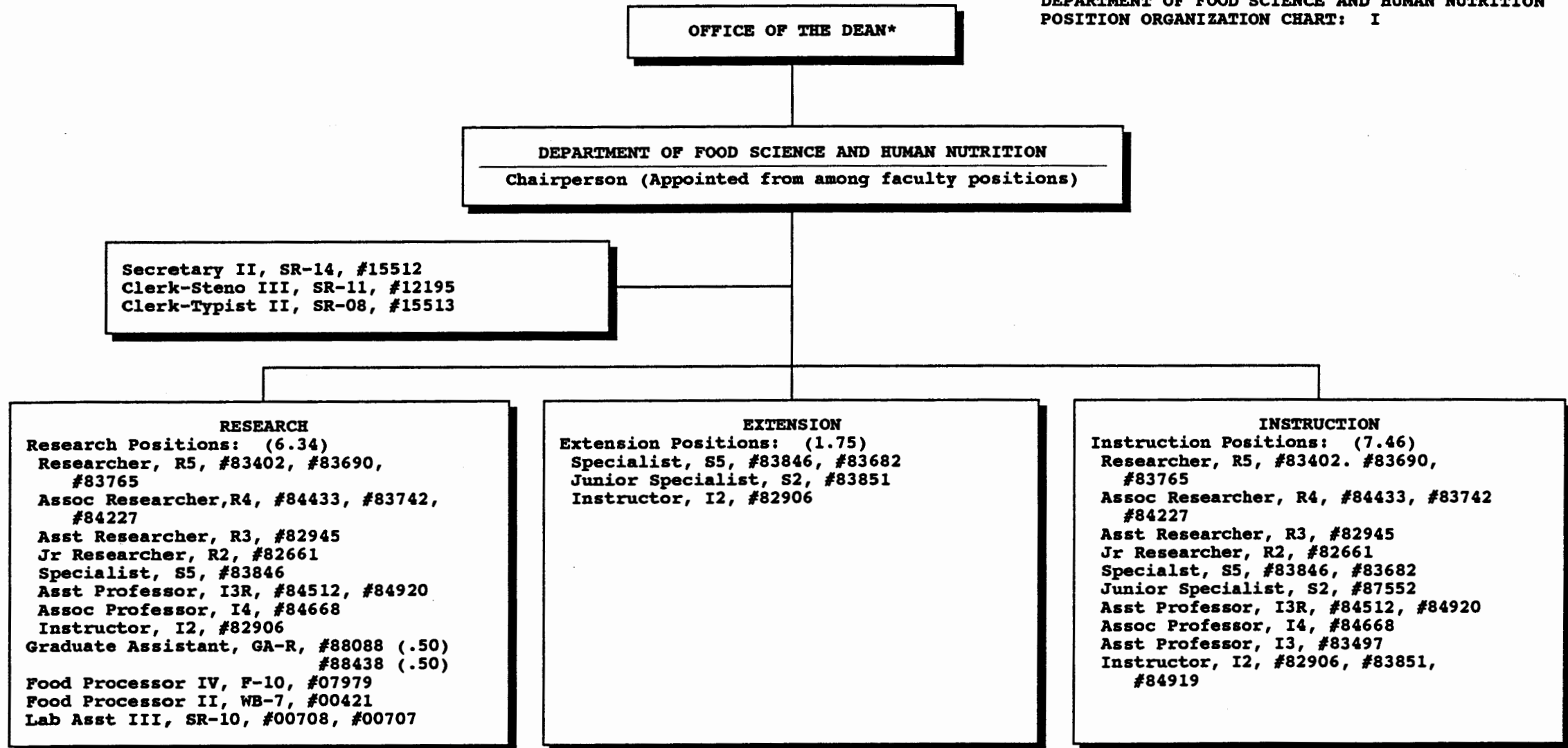
Researcher, R5, #82139, #82327, #82865,
#82866, #83767
Assoc Researcher, R4, #85510, #84138,
#83744, #84316
Graduate Assistant, GA, #88181 (.50)
Graduate Assistant, GA, #88486 (.50)

* & Director of Cooperative Science & Education

CHART UPDATED
DATE JUN 30 1995

STATE OF HAWAII
UNIVERSITY OF HAWAII
UNIVERSITY OF HAWAII AT MANOA
COLLEGE OF TROPICAL AGRICULTURE & HUMAN RESOURCES

DEPARTMENT OF FOOD SCIENCE AND HUMAN NUTRITION
POSITION ORGANIZATION CHART: I



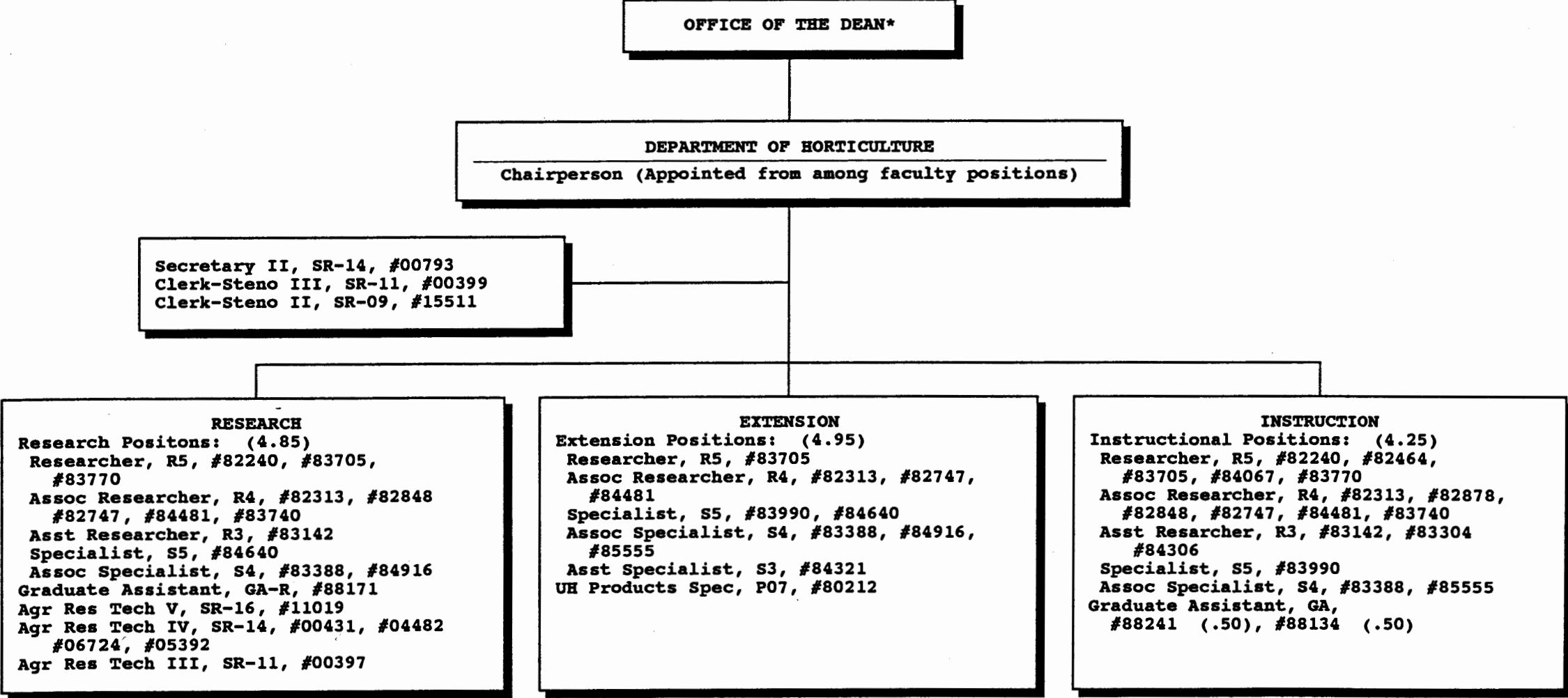
* & Director of Cooperative Science & Education

CHART UPDATED

DATE JUN 30 1995

STATE OF HAWAII
UNIVERSITY OF HAWAII
UNIVERSITY OF HAWAII AT MANOA
COLLEGE OF TROPICAL AGRICULTURE & HUMAN RESOURCES

DEPARTMENT OF HORTICULTURE
POSITION ORGANIZATION CHART: J

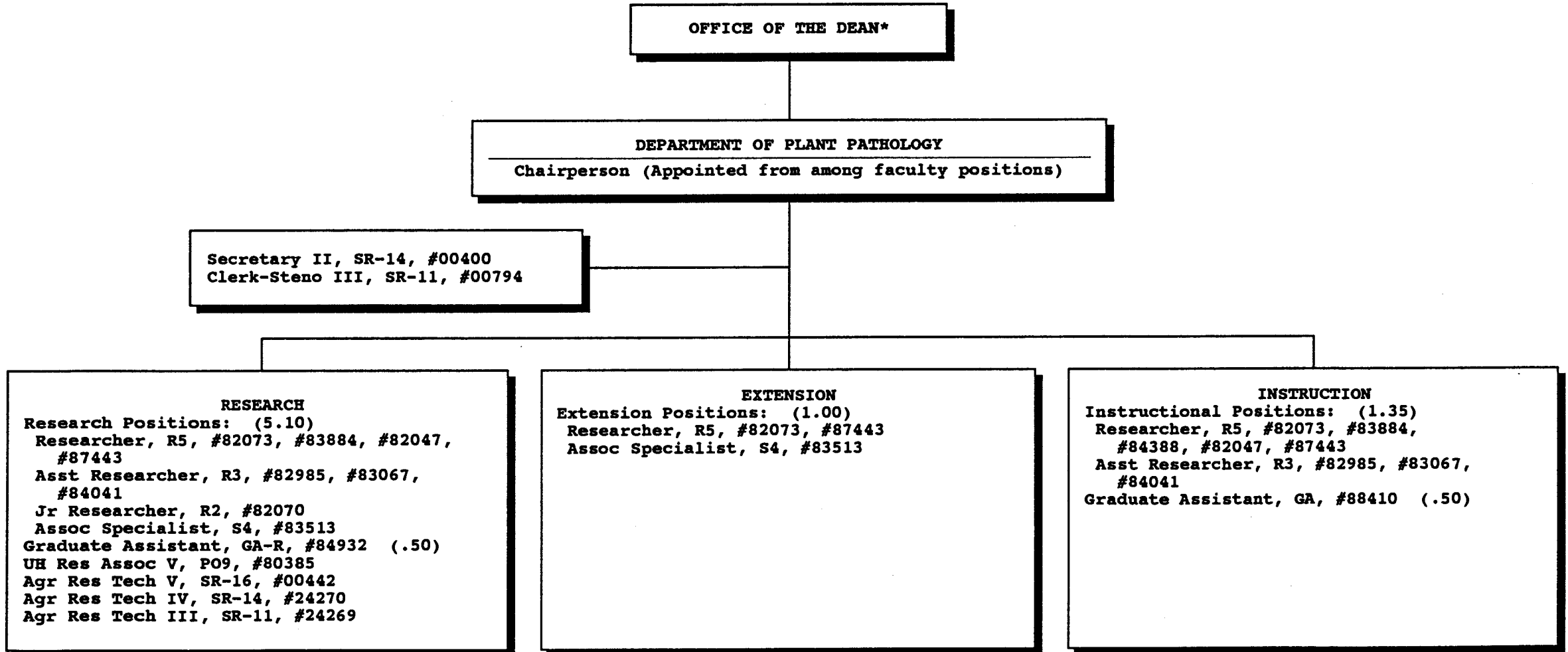


* & Director of Cooperative Science & Education

CHART UPDATED
DATE JUN 30 1995

STATE OF HAWAII
UNIVERSITY OF HAWAII
UNIVERSITY OF HAWAII AT MANOA
COLLEGE OF TROPICAL AGRICULTURE & HUMAN RESOURCES

DEPARTMENT OF PLANT PATHOLOGY
POSITION ORGANIZATION CHART: K

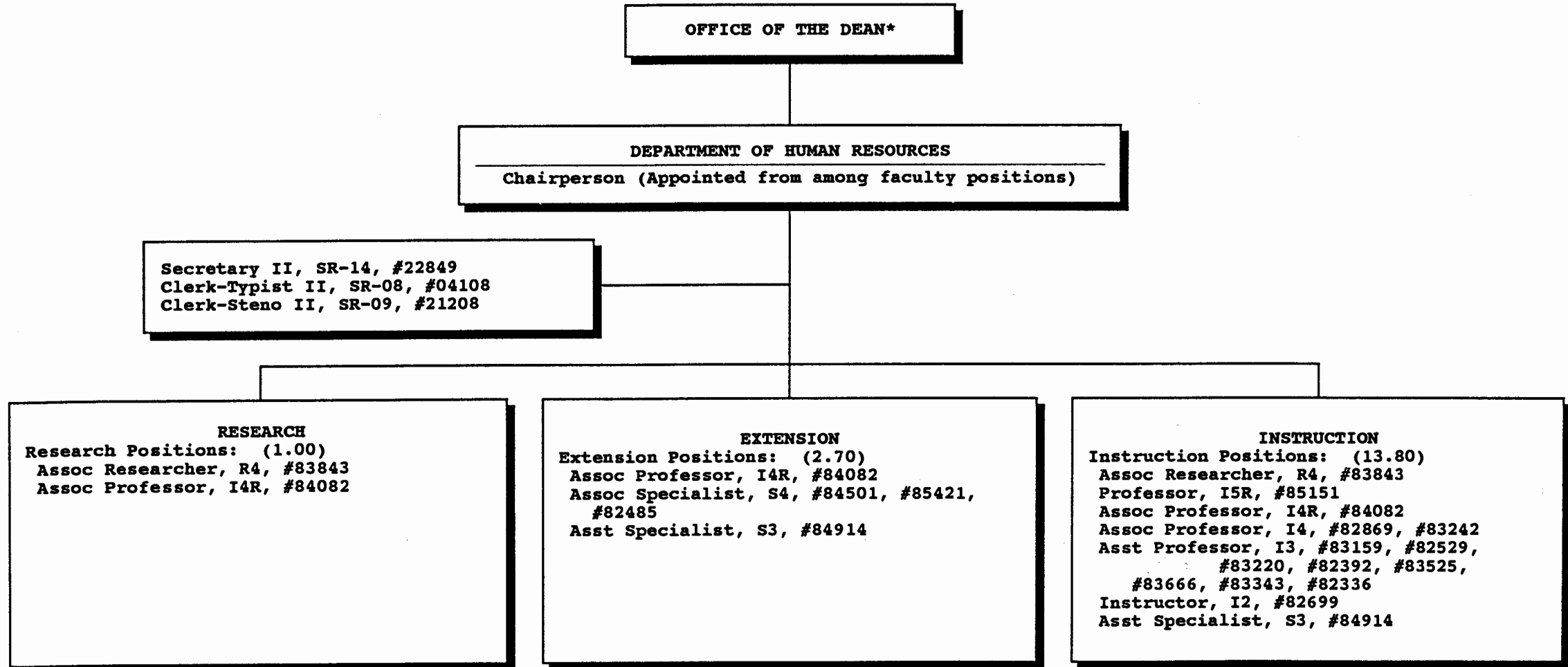


* & Director of Cooperative Science & Education

CHART UPDATED
DATE JUN 30 1995

STATE OF HAWAII
UNIVERSITY OF HAWAII
UNIVERSITY OF HAWAII AT MANOA
COLLEGE OF TROPICAL AGRICULTURE & HUMAN RESOURCES

DEPARTMENT OF HUMAN RESOURCES
POSITION ORGANIZATION CHART: L

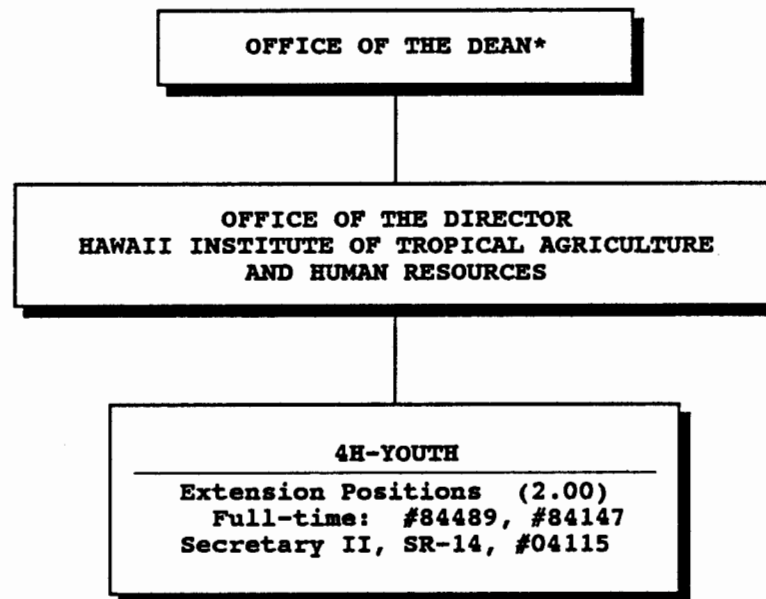


* & Director of Cooperative Science & Education

CHART UPDATED
DATE JUN 30 1995

STATE OF HAWAII
UNIVERSITY OF HAWAII
UNIVERSITY OF HAWAII AT MANOA
COLLEGE OF TROPICAL AGRICULTURE & HUMAN RESOURCES

4-H OFFICE
POSITION ORGANIZATION CHART: P

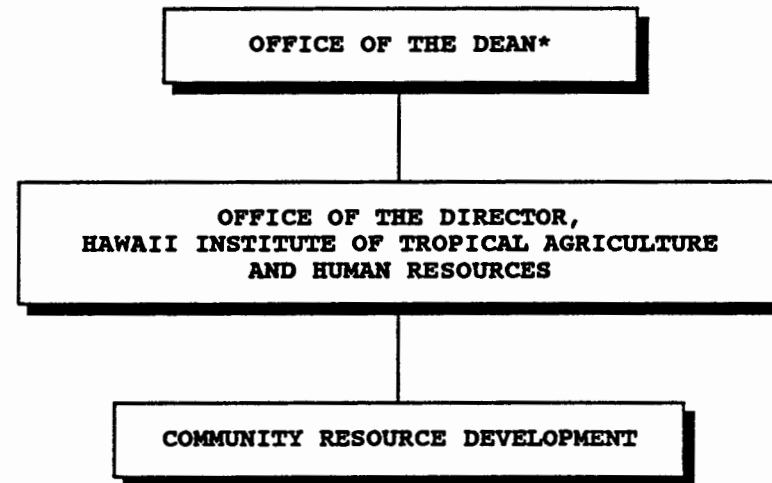


* & Director of Cooperative Science & Education

CHART UPDATED
DATE JUN 30 1995

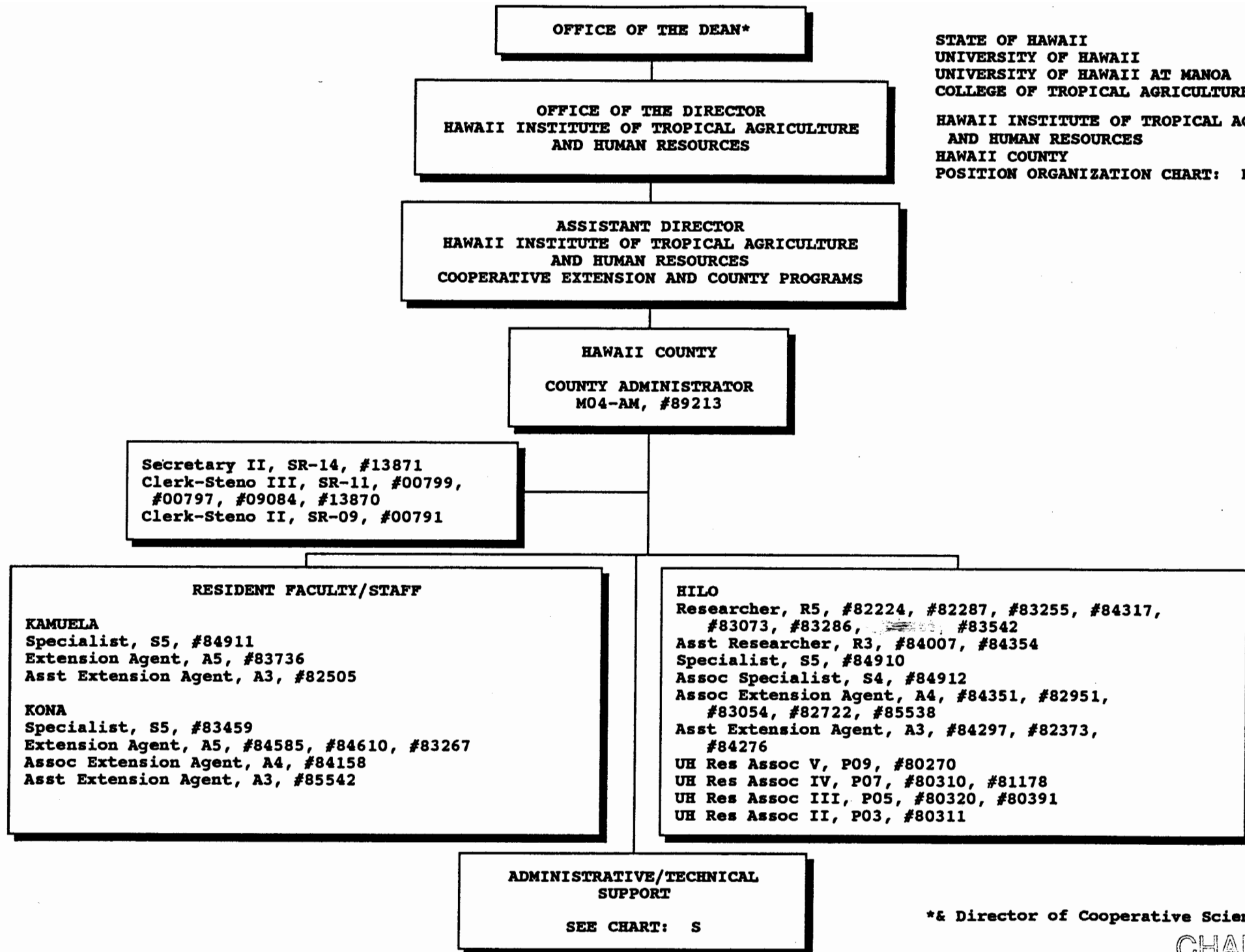
STATE OF HAWAII
UNIVERSITY OF HAWAII
UNIVERSITY OF HAWAII AT MANOA
COLLEGE OF TROPICAL AGRICULTURE & HUMAN RESOURCES

COMMUNITY RESOURCE DEVELOPMENT
POSITION ORGANIZATION CHART: Q



* & Director of Cooperative Science & Education

CHART UPDATED
DATE JUN 30 1995



STATE OF HAWAII
UNIVERSITY OF HAWAII
UNIVERSITY OF HAWAII AT MANOA
COLLEGE OF TROPICAL AGRICULTURE & HUMAN RESOURCES
HAWAII INSTITUTE OF TROPICAL AGRICULTURE
AND HUMAN RESOURCES
HAWAII COUNTY
POSITION ORGANIZATION CHART: R

* & Director of Cooperative Science & Education

CHART UPDATED

DATE JUN 30 1995'

OFFICE OF THE DEAN*

OFFICE OF THE DIRECTOR
HAWAII INSTITUTE OF TROPICAL AGRICULTURE
AND HUMAN RESOURCES

ASSISTANT DIRECTOR
HAWAII INSTITUTE OF TROPICAL AGRICULTURE
AND HUMAN RESOURCES
COOPERATIVE EXTENSION AND COUNTY PROGRAMS

HAWAII COUNTY
OFFICE OF THE COUNTY ADMINISTRATOR

ADMINISTRATIVE/TECHNICAL SUPPORT
UH Administrative Officer III
P07, #80252

STATE OF HAWAII
UNIVERSITY OF HAWAII
UNIVERSITY OF HAWAII AT MANOA
COLLEGE OF TROPICAL AGRICULTURE AND HUMAN RESOURCES
HAWAII INSTITUTE OF TROPICAL AGRICULTURE
AND HUMAN RESOURCES
HAWAII COUNTY - TECHNICAL SUPPORT
POSITION ORGANIZATION CHART: S

WEST HAWAII
Agr Res Tech VI, SR-18, #13530

MEALANI
Agr Res Tech V, SR-16, #13537, #13534
Agr Res Tech IV, SR-14, #14590
Agr Res Tech III, SR-11, #13709, #13710,
#13531, #12100, #44867, #44868

LALAMILO
Agr Res Tech V, SR-16, #13535
Agr Res Tech IV, SR-14, #00426

HAMAKUA
Agr Res Tech V, SR-16, #13711
Agr Res Tech III, SR-11, #13536

KONA
Agr Res Tech V, SR-16, #00409
Agr Res Tech IV, SR-14, #22912
Agr Res Tech III, SR-11, #00439

EAST HAWAII
Agr Res Tech VI, SR-18, #12099

WAIAKEA
Agr Res Tech V, SR-16, #12101, #12094, #14166
Agr Res Tech IV, SR-14, #12767, #14167, #12766,
#12096
Agr Res Tech III, SR-11, #17602, #13532, #12098,
#15497, #14168
Building Maintenance Worker I, WB-09, #12095

VOLCANO
Agr Res Tech V, SR-16, #13206
Agr Res Tech IV, SR-14, #12097

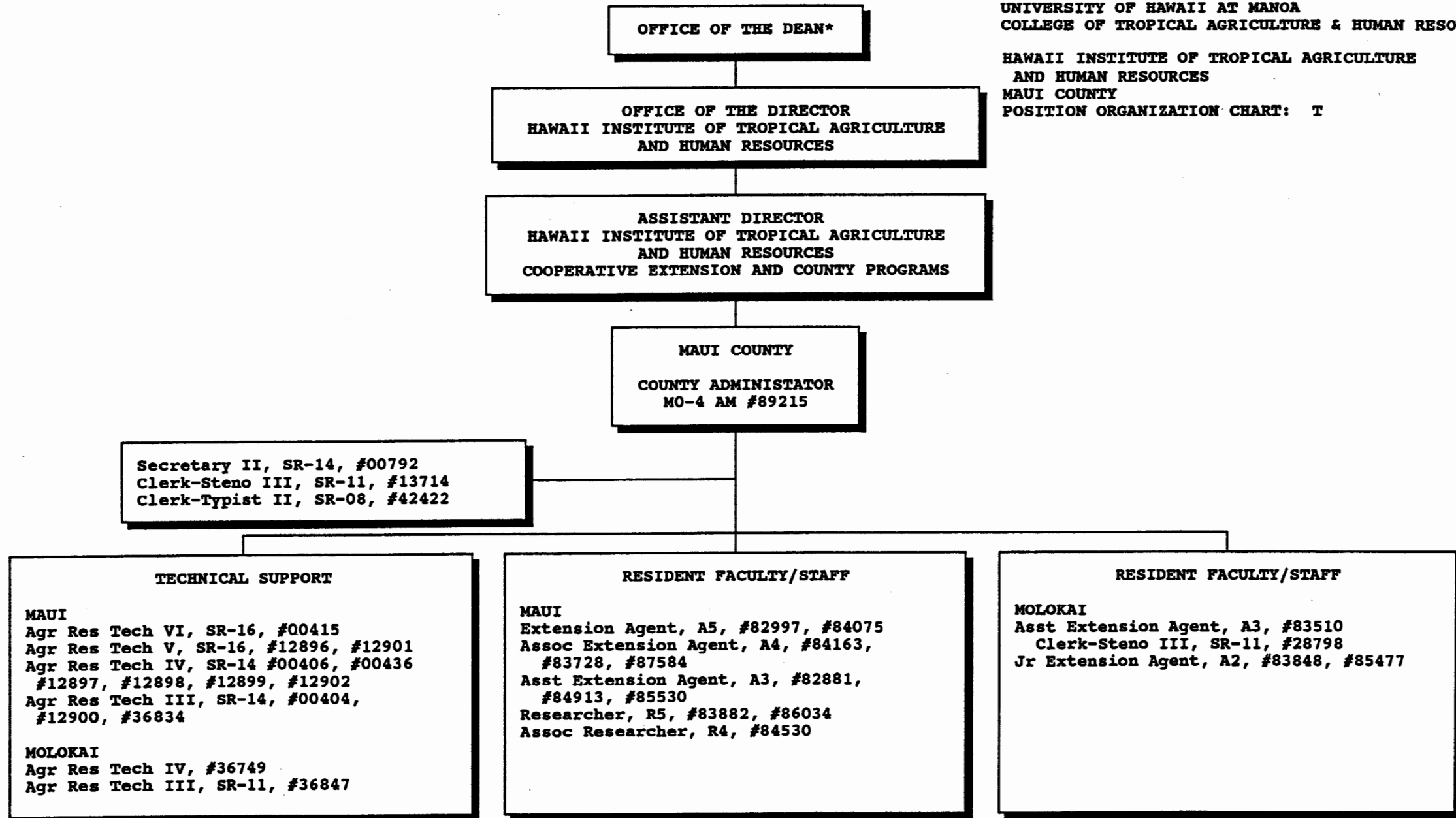
MALAMA-KI
Agr Res Tech V, SR-16, #13205
Agr Res Tech III, SR-11, #12765

* & Director of Cooperative Science & Education

CHART UPDATED
DATE JUN 30 1995

STATE OF HAWAII
UNIVERSITY OF HAWAII
UNIVERSITY OF HAWAII AT MANOA
COLLEGE OF TROPICAL AGRICULTURE & HUMAN RESOURCES

HAWAII INSTITUTE OF TROPICAL AGRICULTURE
AND HUMAN RESOURCES
MAUI COUNTY
POSITION ORGANIZATION CHART: T

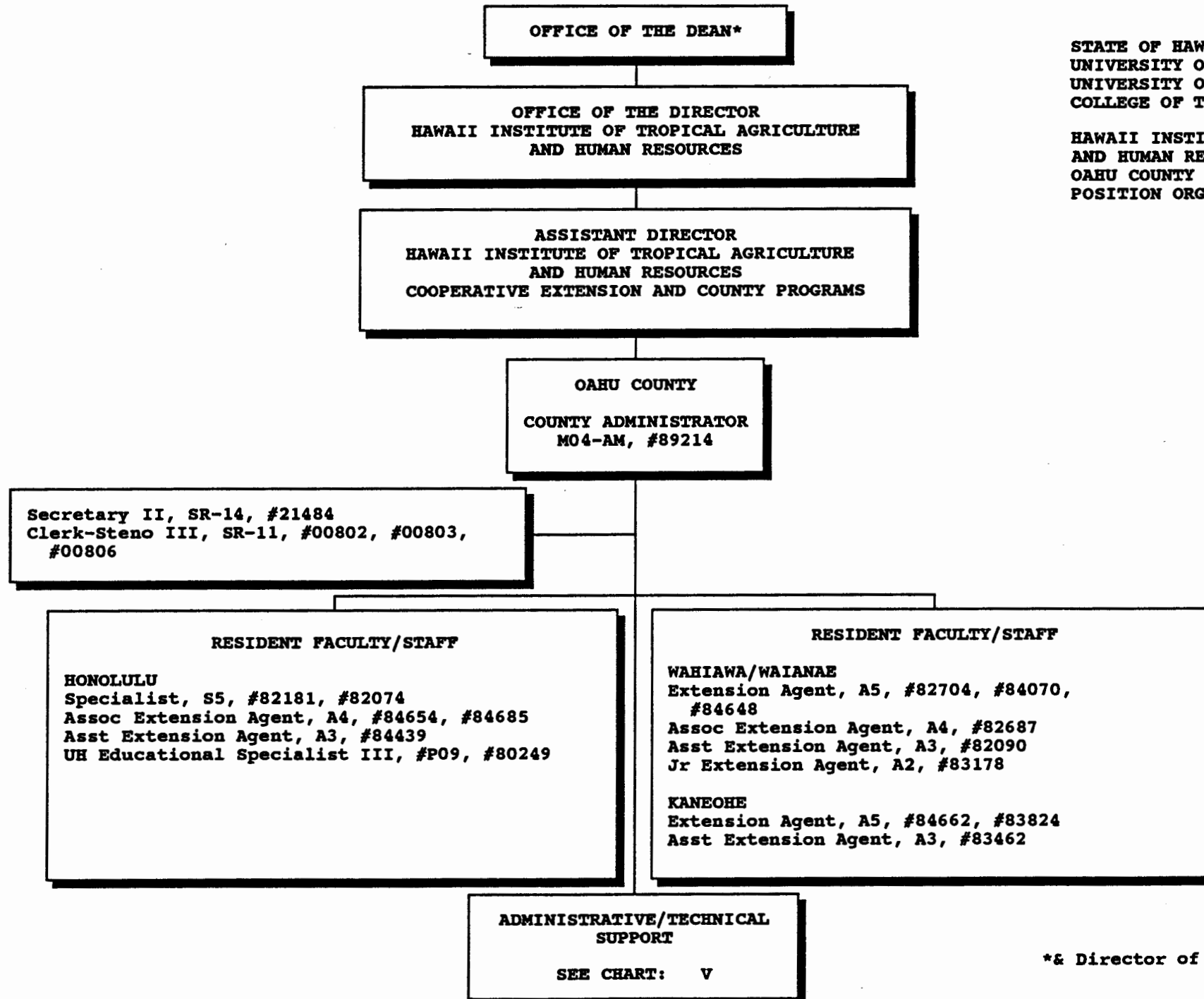


* & Director of Cooperative Science & Education

CHART UPDATED
DATE JUN 30 1995

STATE OF HAWAII
UNIVERSITY OF HAWAII
UNIVERSITY OF HAWAII AT MANOA
COLLEGE OF TROPICAL AGRICULTURE & HUMAN RESOURCES

HAWAII INSTITUTE OF TROPICAL AGRICULTURE
AND HUMAN RESOURCES
OAHU COUNTY
POSITION ORGANIZATION CHART: U

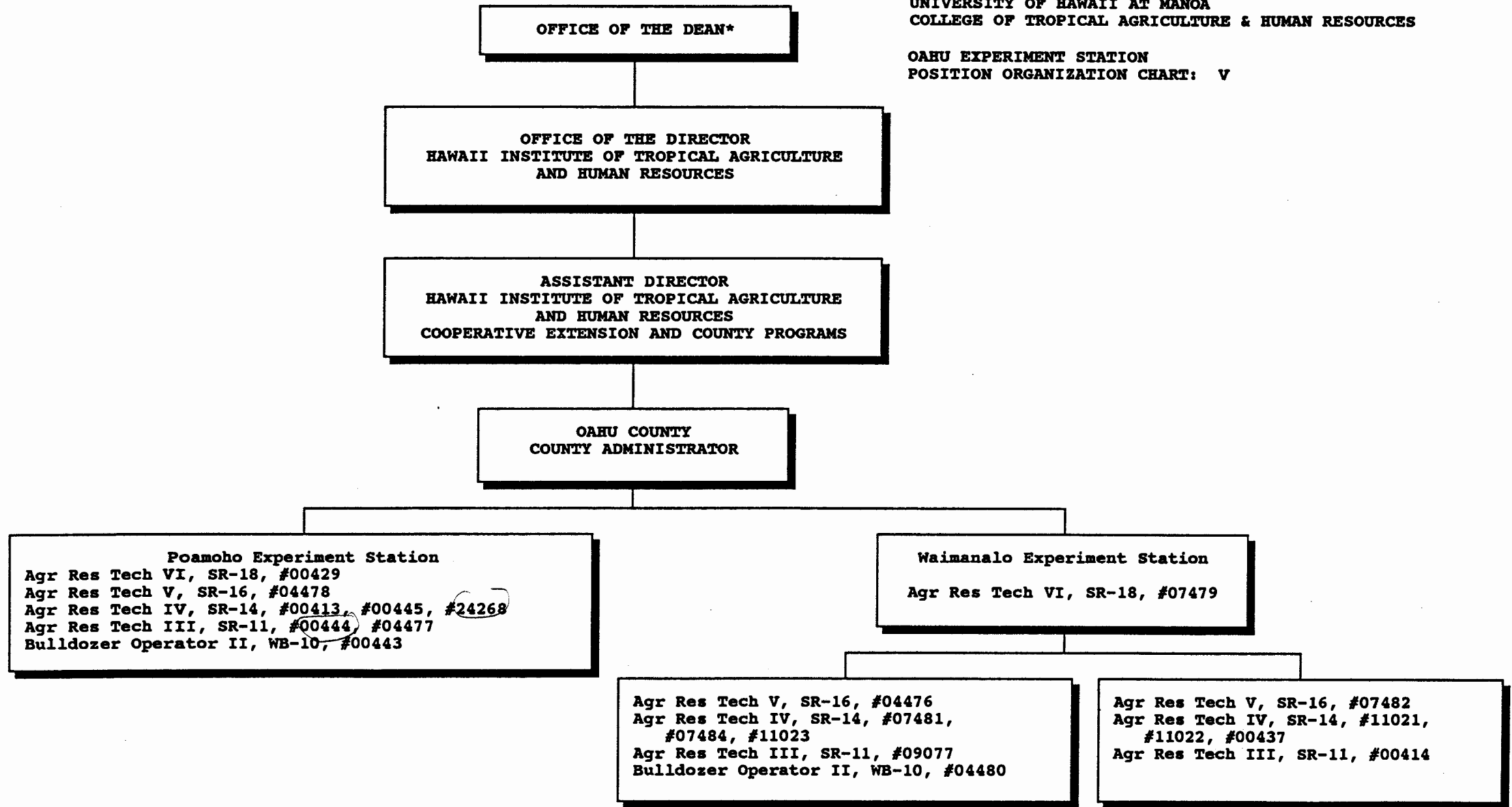


* & Director of Cooperative Science & Education

CHART UPDATED
JUN 30 1995
DATE _____

STATE OF HAWAII
UNIVERSITY OF HAWAII
UNIVERSITY OF HAWAII AT MANOA
COLLEGE OF TROPICAL AGRICULTURE & HUMAN RESOURCES

OAHU EXPERIMENT STATION
POSITION ORGANIZATION CHART: V



* & Director of Cooperative Science & Education

CHART UPDATED

DATE JUN 30 1995'

OFFICE OF THE DEAN*

OFFICE OF THE DIRECTOR
HAWAII INSTITUTE OF TROPICAL AGRICULTURE
AND HUMAN RESOURCES

ASSISTANT DIRECTOR
HAWAII INSTITUTE OF TROPICAL AGRICULTURE
AND HUMAN RESOURCES
COOPERATIVE EXTENSION AND COUNTY PROGRAMS

KAUAI COUNTY
County Administrator
M04-AM, #89216

Secretary II, SR-14, #04003
Clerk-Steno III, SR-11, #13872

TECHNICAL SUPPORT

Agr Res Tech VI, SR-18, #12753
Agr Res Tech V, SR-16, #12755, #13712
Agr Res Tech IV, SR-14, #12102, #12758
Agr Res Tech III, SR-11, #12760, #12761,
#14344

RESIDENT FACULTY/STAFF

Researcher, R5, #82516
Assoc Researcher, R4, #83840, #84120
Asst Researcher, R3, #85505
Assoc Extension Agent, A4, #82196
Asst Extension Agent, A3, #82175, #83816,
#85526
Jr. Extension Agent, A2, #82363

STATE OF HAWAII
UNIVERSITY OF HAWAII
UNIVERSITY OF HAWAII AT MANOA
COLLEGE OF TROPICAL AGRICULTURE & HUMAN RESOURCES

HAWAII INSTITUTE OF TROPICAL AGRICULTURE
AND HUMAN RESOURCES
KAUAI COUNTY
POSITION ORGANIZATION CHART: W

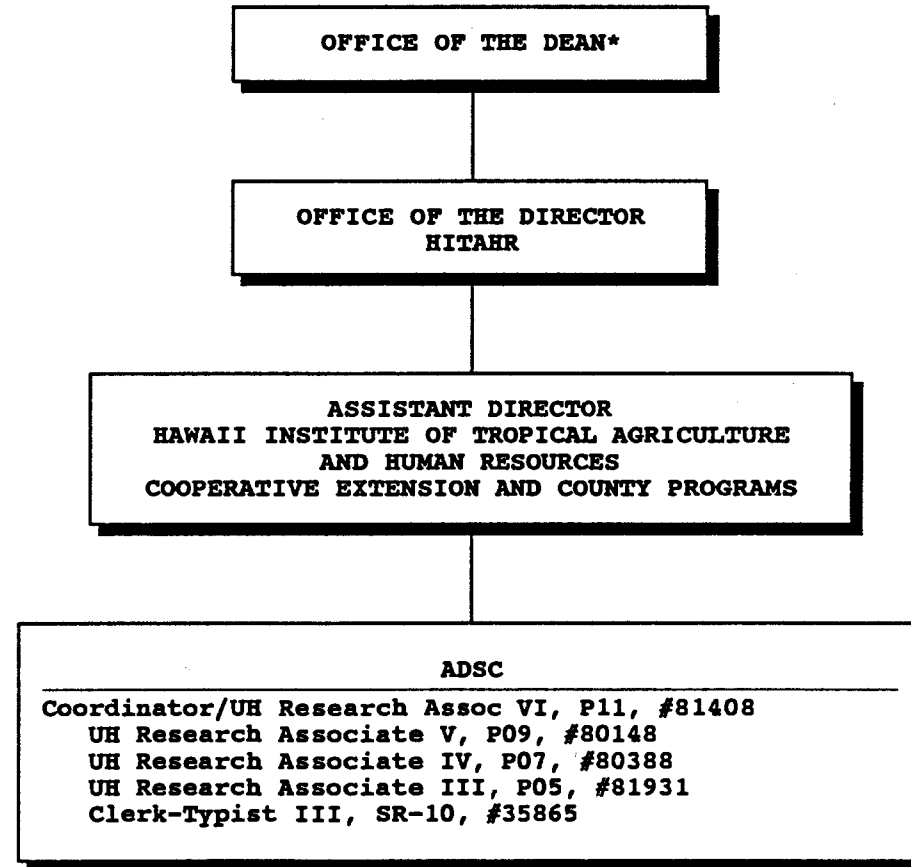
* & Director of Cooperative Science & Education

CHART UPDATED

DATE JUN 30 1995

STATE OF HAWAII
UNIVERSITY OF HAWAII
UNIVERSITY OF HAWAII AT MANOA
COLLEGE OF TROPICAL AGRICULTURE AND HUMAN RESOURCES

AGRICULTURAL DIAGNOSTIC SERVICE CENTER
POSITION ORGANIZATION CHART: X

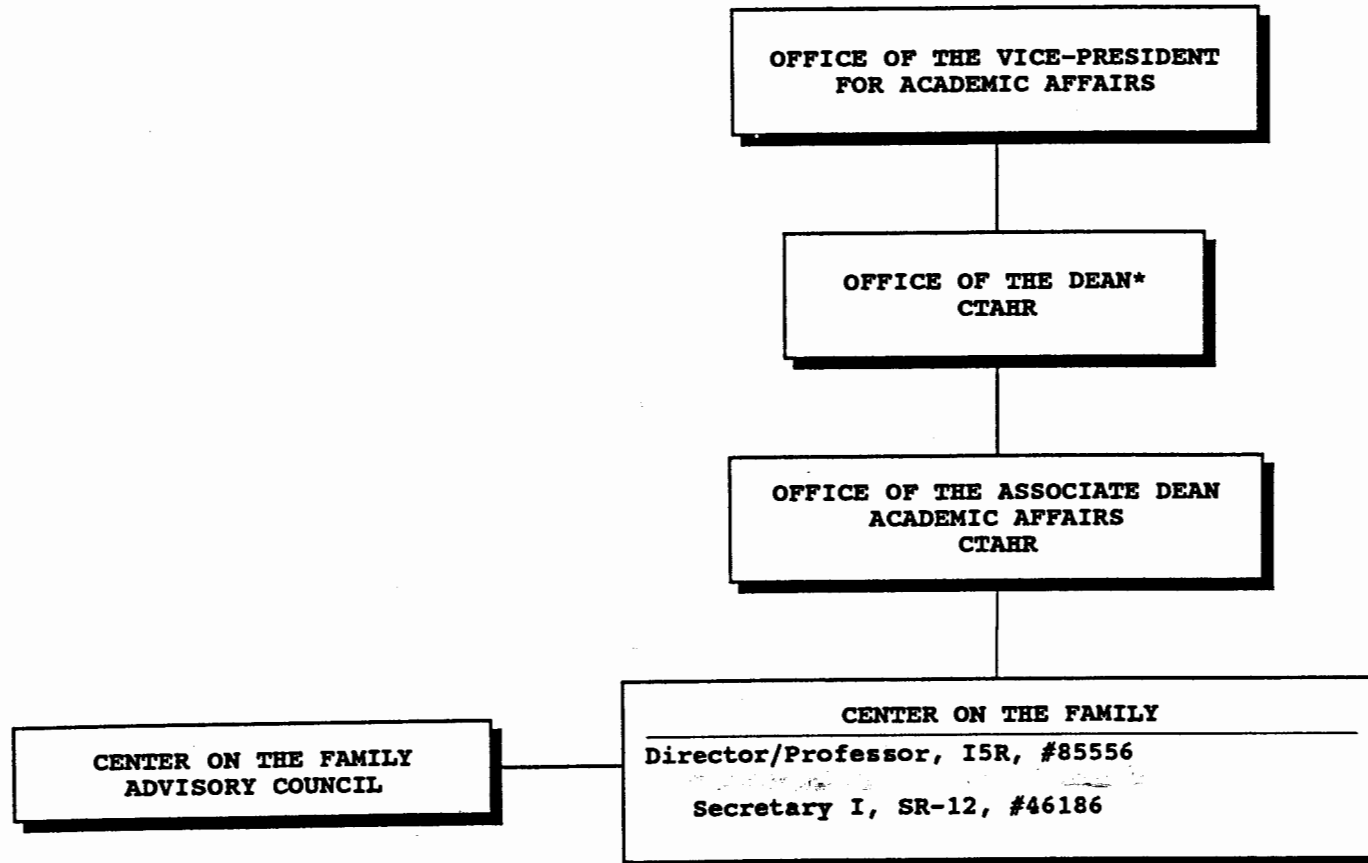


* & Director of Cooperative Science & Education

CHART UPDATED
DATE JUN 30 1995

STATE OF HAWAII
UNIVERSITY OF HAWAII
UNIVERSITY OF HAWAII AT MANOA
COLLEGE OF TROPICAL AGRICULTURE AND HUMAN RESOURCES

CENTER ON THE FAMILY
POSITION ORGANIZATION CHART: Y



* & Director of Cooperative Science & Education

CHART UPDATED
DATE JUN 30 1995