

State of Hawaii
University of Hawaii
University of Hawaii - West Oahu

Position Organization Chart

Chart I

OFFICE OF THE PRESIDENT

OFFICE OF THE
SENIOR VICE PRESIDENT
AND CHANCELLOR
Chart II

EXECUTIVE VICE CHANCELLOR
UH-WEST OAHU

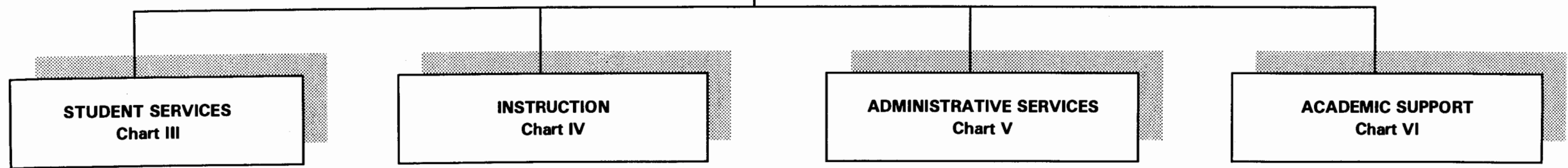


CHART UPDATED
DATE JUN 30 1995

State of Hawaii
University of Hawaii
University of Hawaii - West Oahu
Office of the Chancellor

Position Organization Chart

Chart II

General Funds 1.00

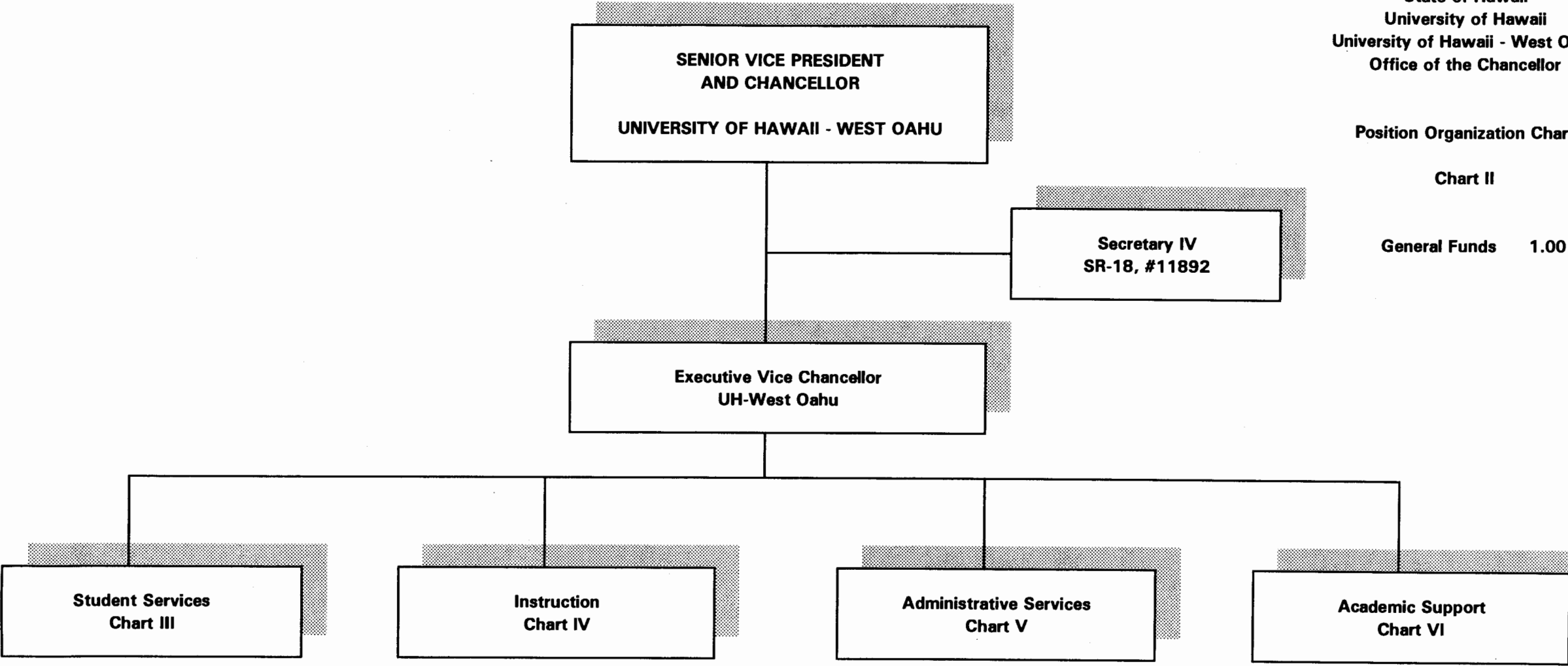


CHART UPDATED
DATE JUN 30 1995

State of Hawaii
University of Hawaii
University of Hawaii - West Oahu
Student Services

Position Organization Chart

Chart III

General Funds 7.00

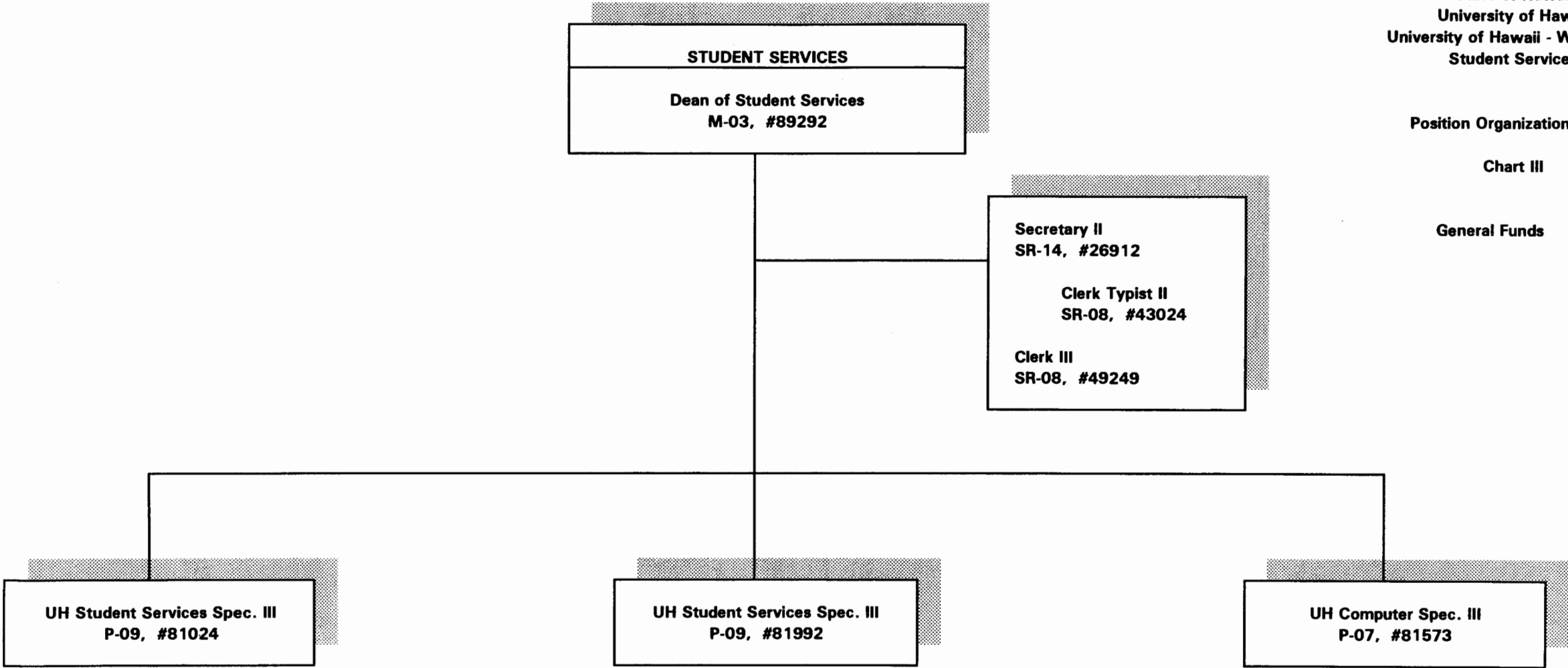


CHART UPDATED

DATE JUN 30 1995

State of Hawaii
University of Hawaii
Instruction

Position Organization Chart

Chart IV

General Funds 27.00

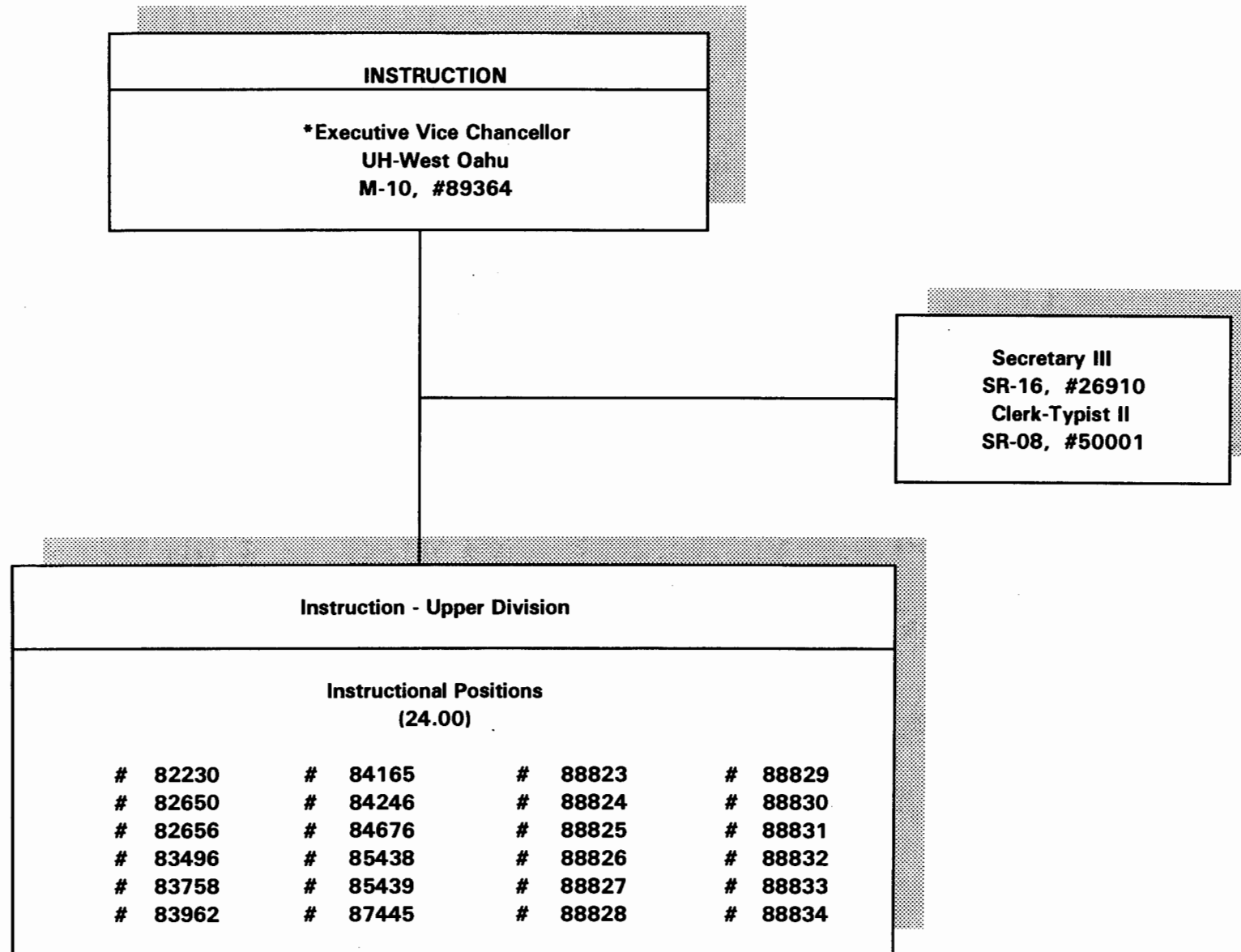
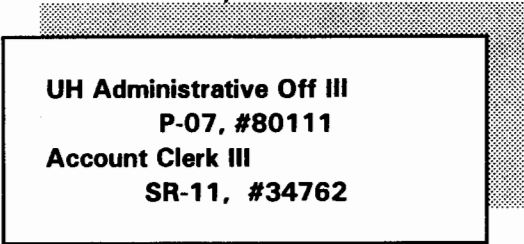
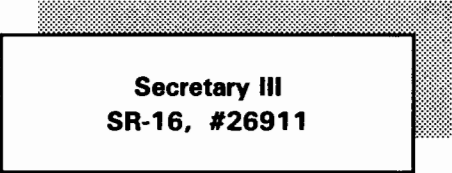
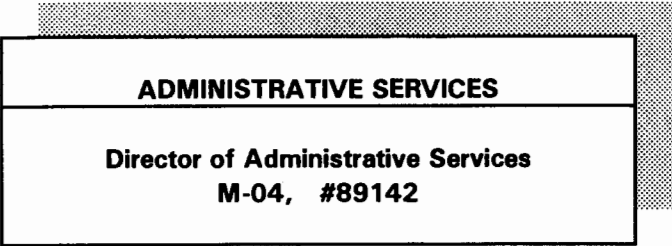


CHART UPDATED
DATE JUN 30 1995

*Position replaces the Dean of Faculty, M-07, #89131 effective 7-01-95.



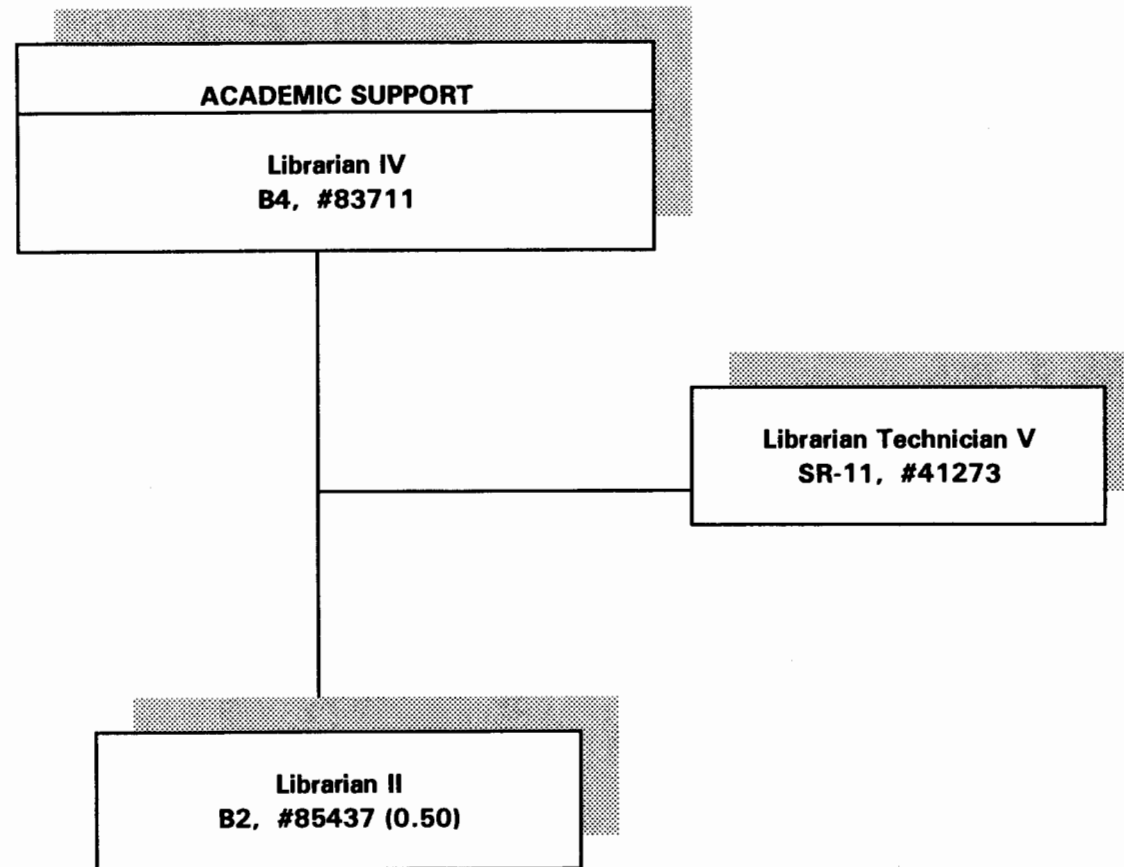
State of Hawaii
University of Hawaii
University of Hawaii - West Oahu
Administrative Services

Position Organization Chart

Chart V

General Funds 4.00

CHART UPDATED
DATE JUN 30 1995



State of Hawaii
University of Hawaii
University of Hawaii - West Oahu
Academic Support

Position Organization Chart

Chart VI

General Funds 2.50

CHART UPDATED
DATE JUN 30 1995