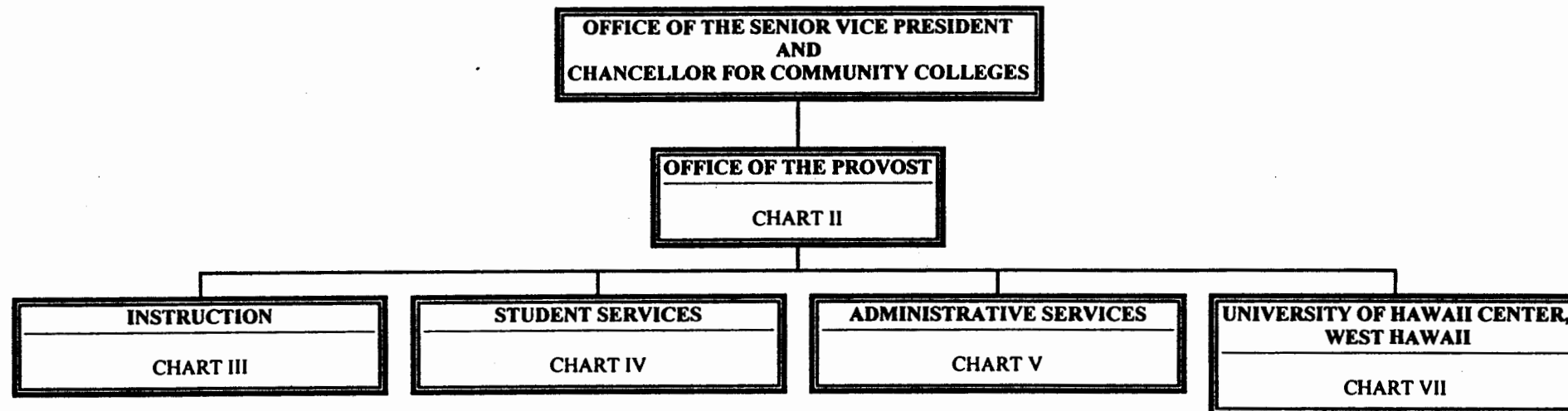


STATE OF HAWAII
UNIVERSITY OF HAWAII
COMMUNITY COLLEGES
HAWAII COMMUNITY COLLEGE

Organization Chart

Chart I



APPROVED BY THE UNIVERSITY
BOARD OF REGENTS
MAY 16 1997

Date

NOTE: APPROVAL ACTION TAKEN MAY 16, 1997. EFFECTIVE DATE OF REORGANIZATION JULY 1, 1997.

Note - Break in sequence, Chart VI reserved for Continuing Education & Training

STATE OF HAWAII
UNIVERSITY OF HAWAII
COMMUNITY COLLEGES
HAWAII COMMUNITY COLLEGE
OFFICE OF THE PROVOST

Position Organization Chart

Chart II

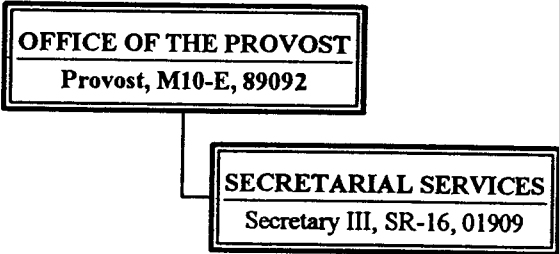


CHART UPDATED
DATE JUN 30 1996

	<u>Perm</u>	<u>Temp</u>
General Funds	2.00	0.00

STATE OF HAWAII
UNIVERSITY OF HAWAII
COMMUNITY COLLEGES
HAWAII COMMUNITY COLLEGE
INSTRUCTION

Position Organization Chart

Chart III

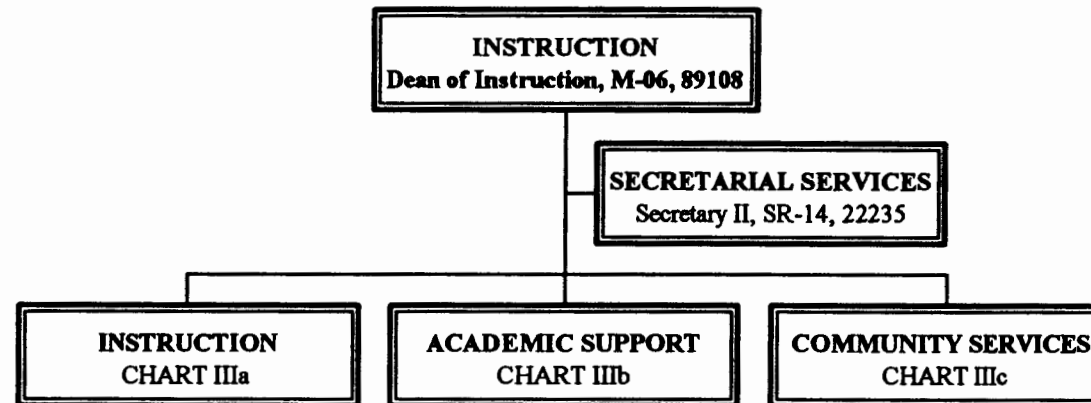


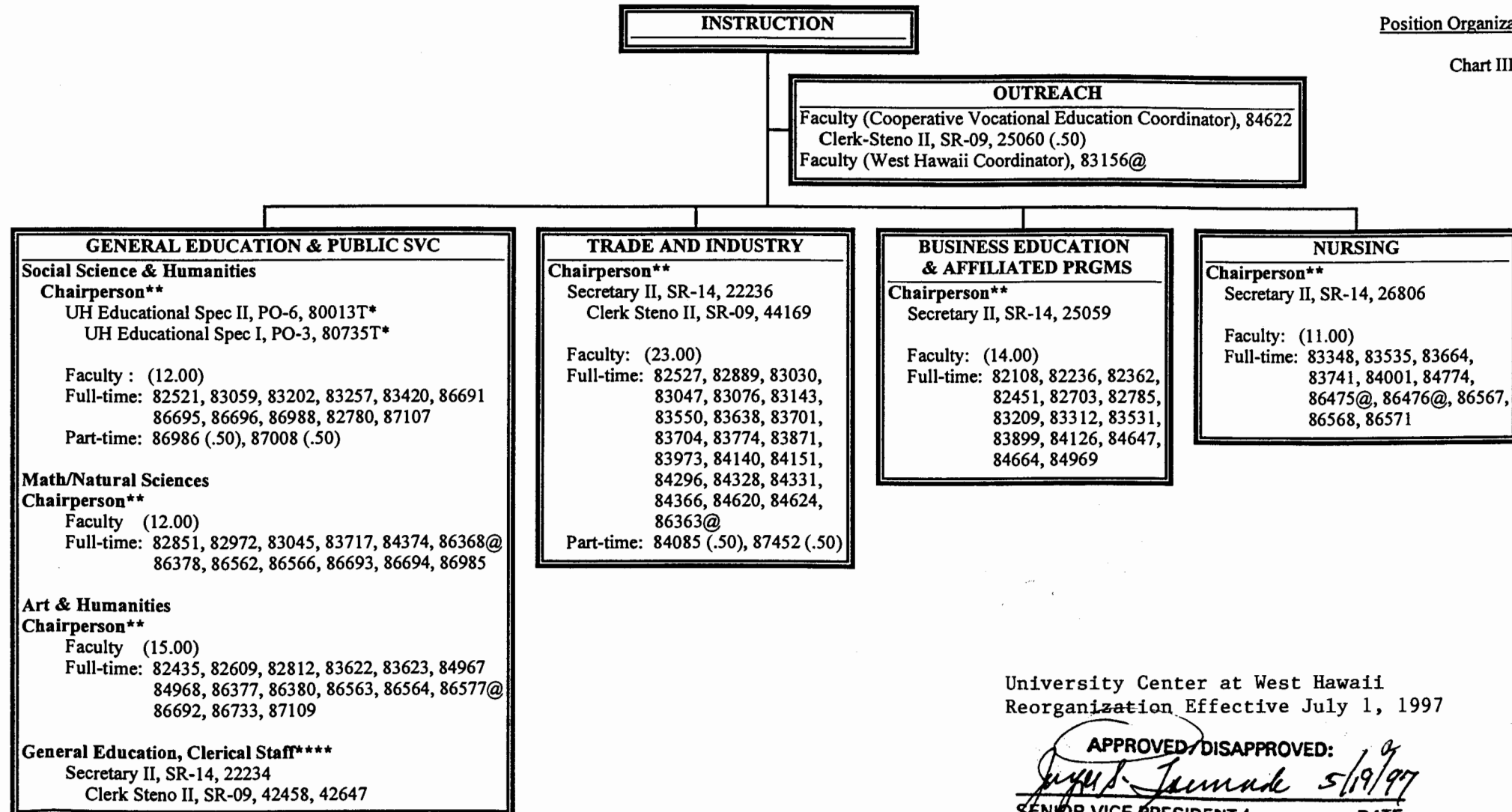
CHART UPDATED
DATE JUN 30 1996

	<u>Perm</u>	<u>Temp</u>
General Funds	2.00	0.00

STATE OF HAWAII
UNIVERSITY OF HAWAII
COMMUNITY COLLEGES
HAWAII COMMUNITY COLLEGE
INSTRUCTION

Position Organization Chart

Chart IIIa



University Center at West Hawaii
Reorganization Effective July 1, 1997

APPROVED/DISAPPROVED:

[Signature] 5/19/97

SENIOR VICE PRESIDENT/ DATE
CHANCELLOR FOR COMMUNITY COLLEGES

* Temporary Position
**Chairperson is appointed from among faculty positions within department.
****Secretarial and Clerical staff serves all three General Education Departments.
@Position located at University of Hawaii Center, West Hawaii.

	Perm	Temp
General Fund	96.50	2.00

STATE OF HAWAII
UNIVERSITY OF HAWAII
COMMUNITY COLLEGES
HAWAII COMMUNITY COLLEGE
ACADEMIC SUPPORT

Position Organization Chart

Chart IIIb

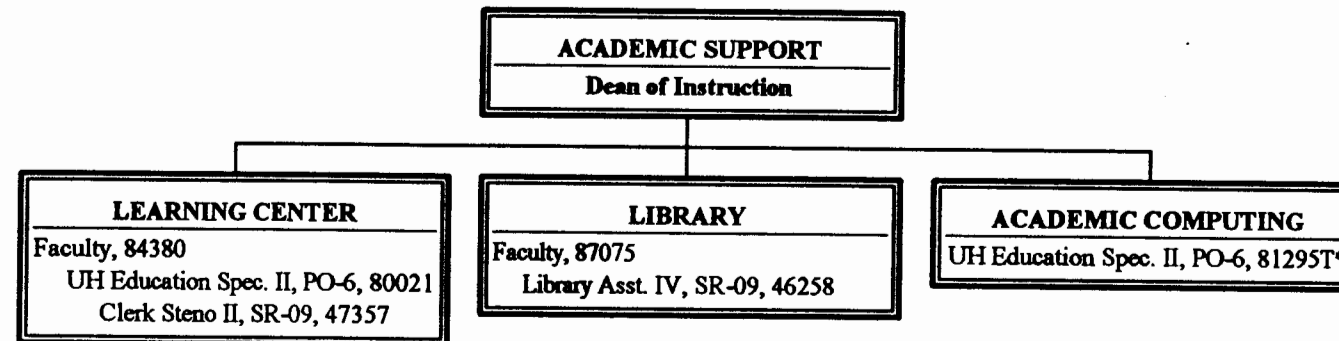


CHART UPDATED
DATE JUN 30 1996

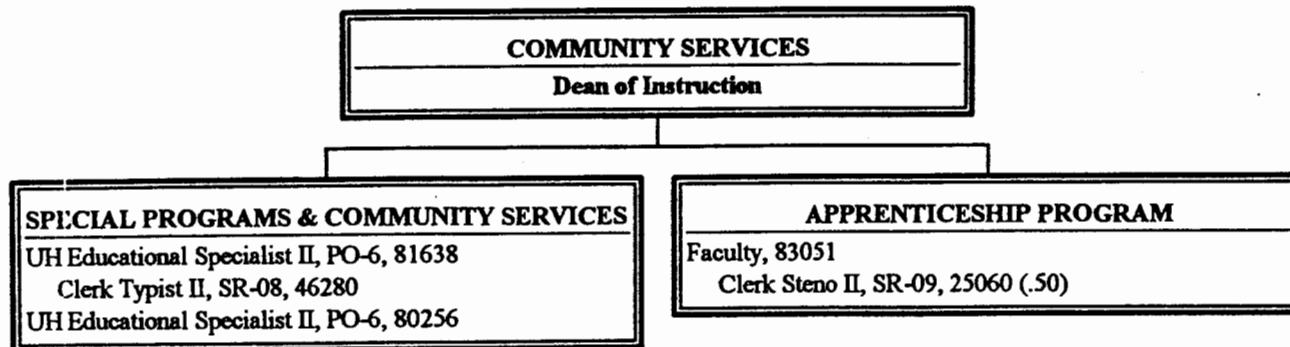
* Temporary Position

	<u>Perm</u>	<u>Temp</u>
General Funds	5.00	1.00

STATE OF HAWAII
UNIVERSITY OF HAWAII
COMMUNITY COLLEGES
HAWAII COMMUNITY COLLEGE
COMMUNITY SERVICES

Position Organization Chart

Chart IIIc



APPROVED/DISAPPROVED:

[Signature] 7/1/96
SENIOR VICE PRESIDENT/ DATE
CHANCELLOR FOR COMMUNITY COLLEGES

96 NOV -7 P 1:04
PERSONNEL
COMMUNITY COLLEGE
CHANCELLOR'S OFFICE

	Perm	Temp
General Funds	4.50	0.00

46-0474

STATE OF HAWAII
UNIVERSITY OF HAWAII
COMMUNITY COLLEGES
HAWAII COMMUNITY COLLEGE
STUDENT SERVICES

Position Organization Chart

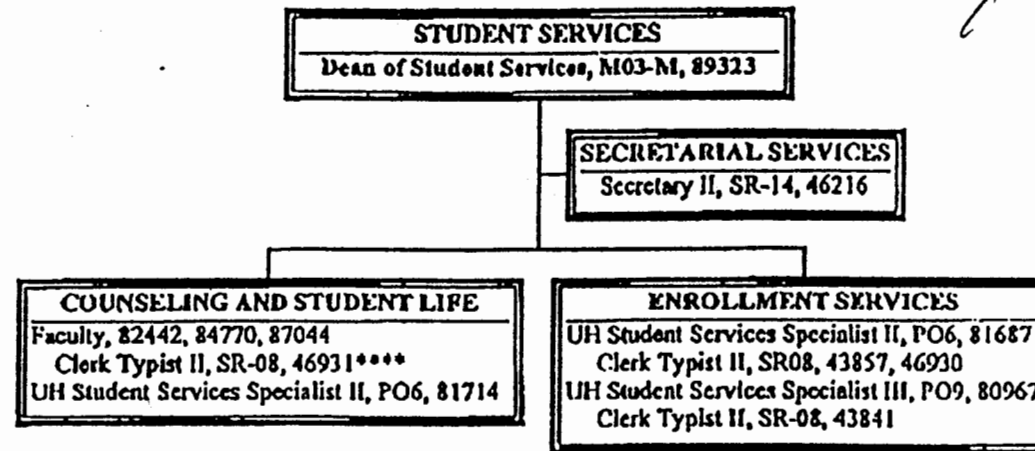
Chart IV

APPROVED PURSUANT TO BOR ACTION:

[Signature]
for JOYCE TSUNODA
SENIOR VICE PRESIDENT AND CHANCELLOR,
FOR COMMUNITY COLLEGES

DATE: May 16, 1997

NOTE: APPROVAL ACTION TAKEN MAY 16, 1997.
EFFECTIVE DATE OF REORGANIZATION JULY 1, 1997.



****Clerk Typist reports to the Senior Faculty Position of Counseling & Student Life

	<u>Perm</u>	<u>Temp</u>
General Fund	12.00	0.00

STATE OF HAWAII
UNIVERSITY OF HAWAII
COMMUNITY COLLEGES
HAWAII COMMUNITY COLLEGE
ADMINISTRATIVE SERVICES

Position Organization Chart

Chart V

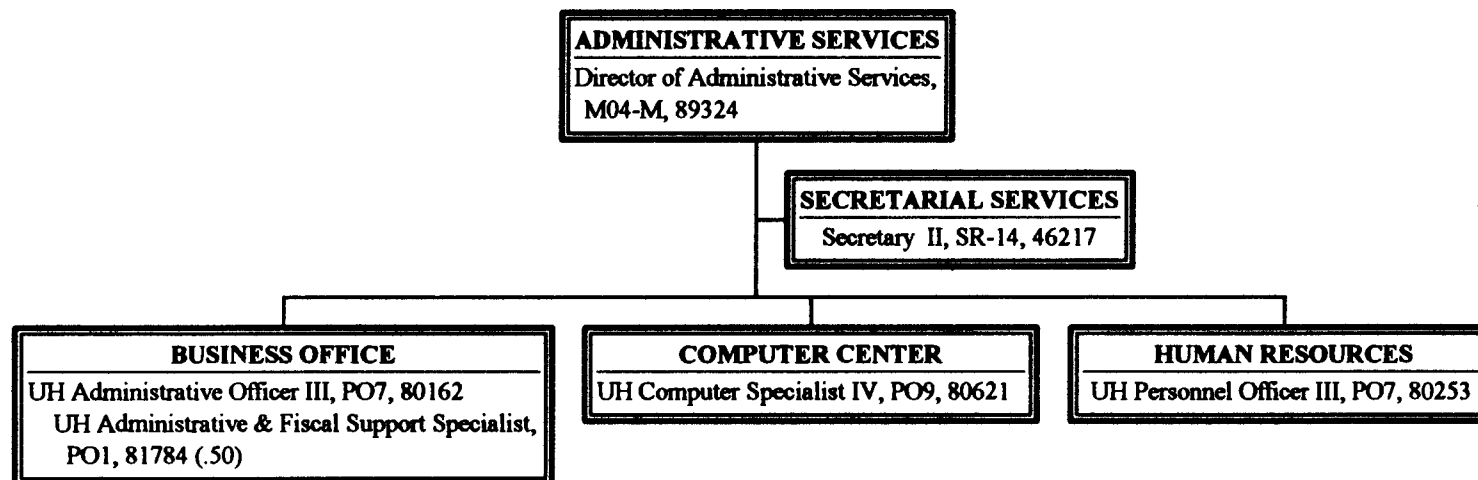


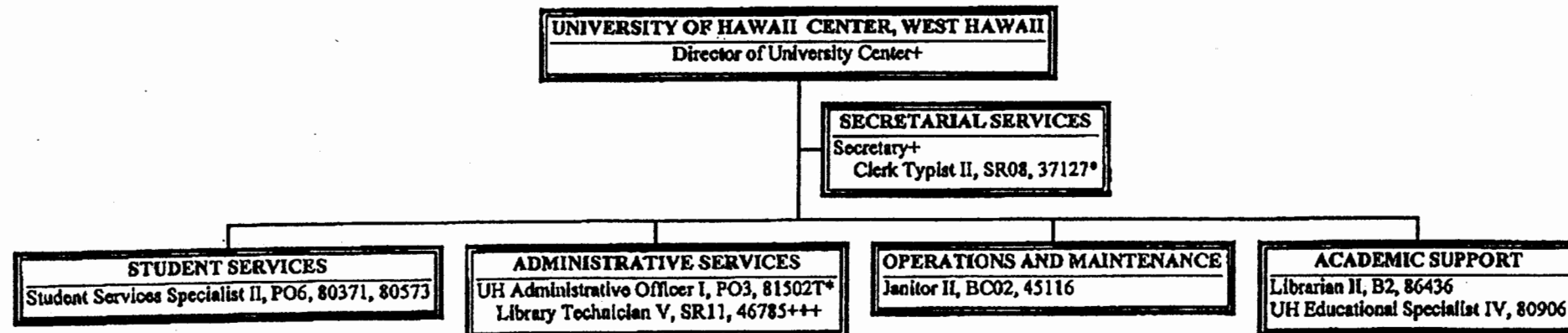
CHART UPDATED
JUN 30 1996
DATE _____

	<u>Perm</u>	<u>Temp</u>
General Funds	5.50	0.00

STATE OF HAWAII
UNIVERSITY OF HAWAII
COMMUNITY COLLEGES
HAWAII COMMUNITY COLLEGE
UNIVERSITY OF HAWAII CENTER, WEST HAWAII

Position Organization Chart

Chart VII



APPROVED BY THE UNIVERSITY
BOARD OF REGENTS
MAY 16 1997

Date

NOTE: APPROVAL ACTION TAKEN MAY 16, 1997.
EFFECTIVE DATE OF REORGANIZATION JULY 1, 1997.

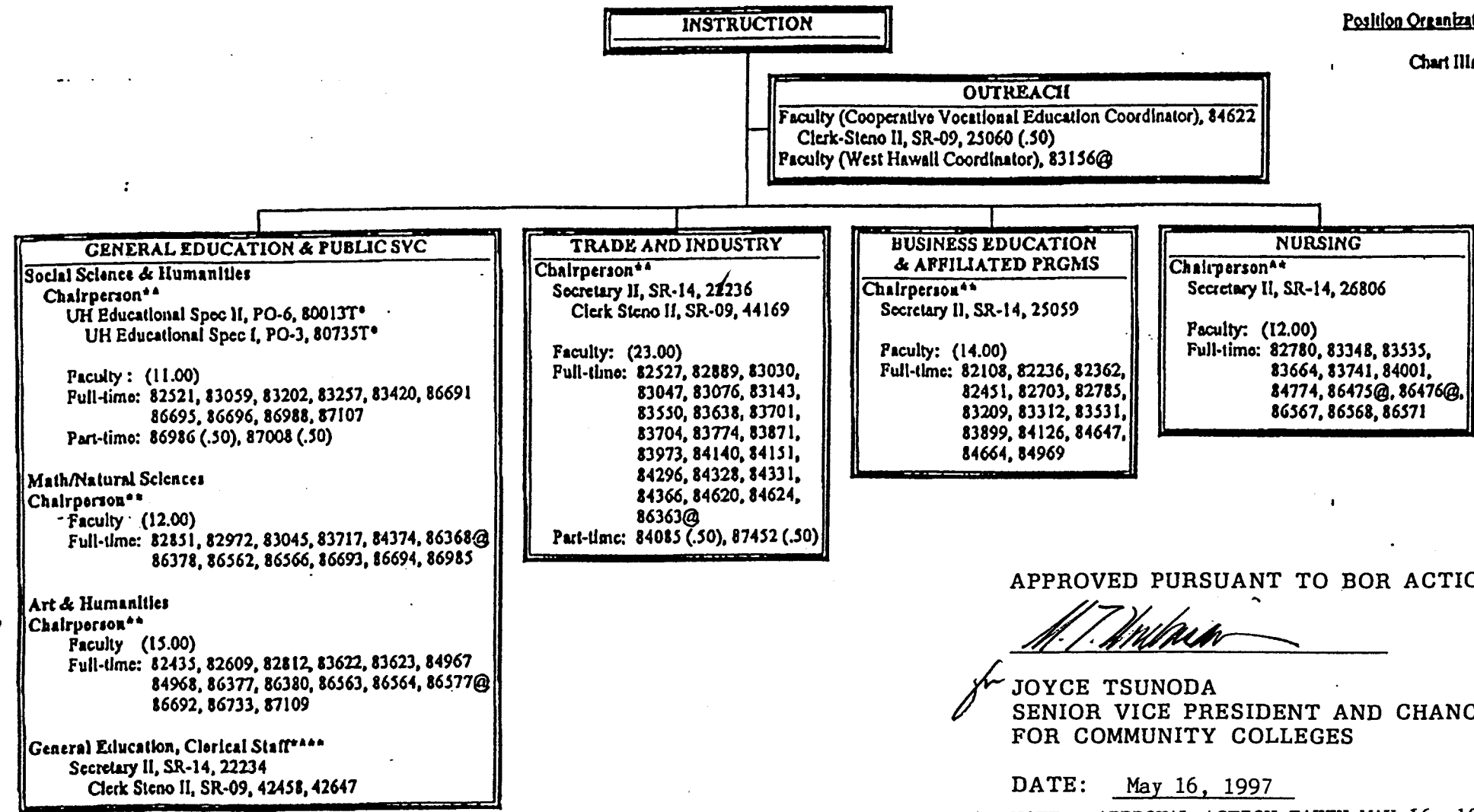
*Temporary Position
+Temporary Position to be established
+++46785, Library Tec V SR11 to be redescribed

	Perm	Temp
General Fund	6.00	2.00

STATE OF HAWAII
UNIVERSITY OF HAWAII
COMMUNITY COLLEGES
HAWAII COMMUNITY COLLEGE
INSTRUCTION


Position Organization Chart

Chart IIIa



SUPERSEDED
Date MAY 19 1997

APPROVED PURSUANT TO BOR ACTION:


JOYCE TSUNODA
SENIOR VICE PRESIDENT AND CHANCELLOR,
FOR COMMUNITY COLLEGES

DATE: May 16, 1997

NOTE: APPROVAL ACTION TAKEN MAY 16, 1997.
EFFECTIVE DATE OF REORGANIZATION JULY 1, 1997.

- * Temporary Position
- ** Chairperson is appointed from among faculty positions within department.
- *** Secretarial and Clerical staff serves all three General Education Departments.
- @ Position located at University of Hawaii Center, West Hawaii.

	Perm	Temp
General Fund	96.50	2.00

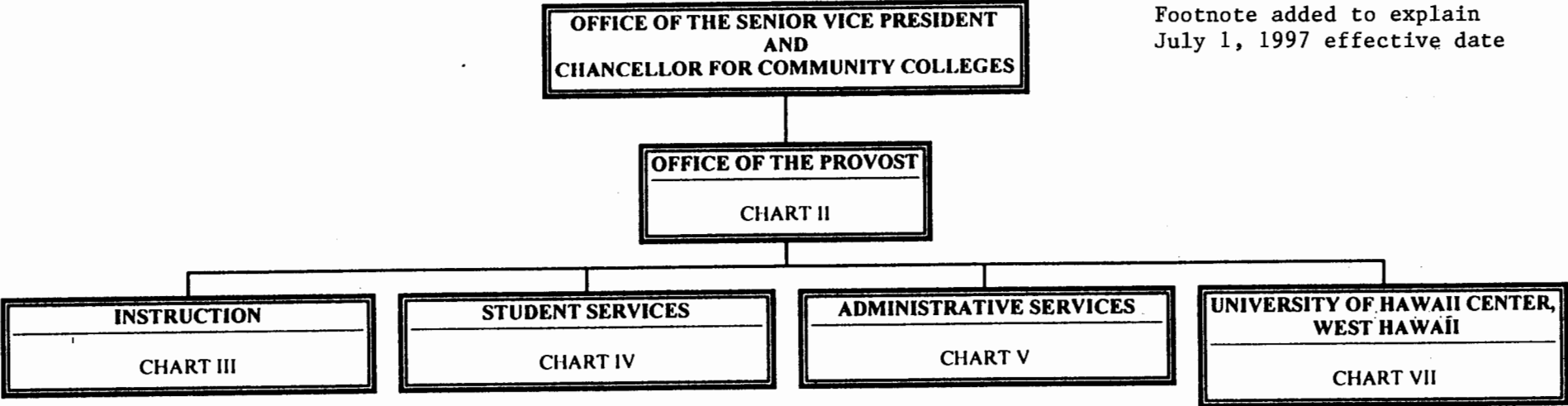
Organization Chart

Chart I

SUPERSEDED

Date _____

Footnote added to explain
July 1, 1997 effective date



APPROVED BY THE UNIVERSITY
BOARD OF REGENTS
MAY 16 1997

Date

Note - Break in sequence, Chart VI reserved for Continuing Education & Training

STATE OF HAWAII
UNIVERSITY OF HAWAII
COMMUNITY COLLEGES
HAWAII COMMUNITY COLLEGE
INSTRUCTION

Position Organization Chart

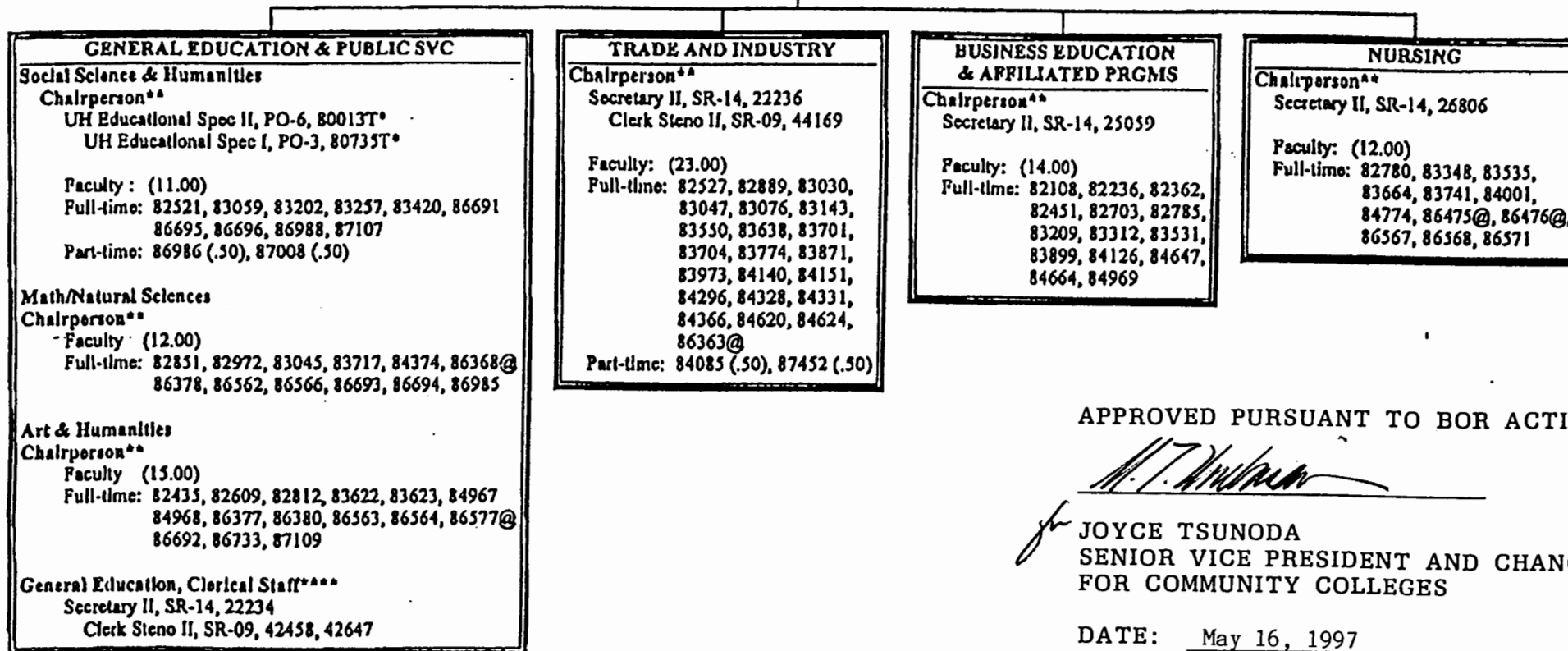
Chart IIIa

INSTRUCTION

OUTREACH
Faculty (Cooperative Vocational Education Coordinator), 84622
Clerk-Steno II, SR-09, 25060 (.50)
Faculty (West Hawaii Coordinator), 83156@

Footnote added to explain
July 1, 1997 effective date

SUPERSEDED
Date MAY 19 1997



APPROVED PURSUANT TO BOR ACTION:

[Signature]
JOYCE TSUNODA
SENIOR VICE PRESIDENT AND CHANCELLOR,
FOR COMMUNITY COLLEGES

DATE: May 16, 1997

- * Temporary Position
- ** Chairperson is appointed from among faculty positions within department.
- *** Secretarial and Clerical staff serves all three General Education Departments.
- @ Position located at University of Hawaii Center, West Hawaii.

	Perm	Temp
General Fund	96.50	2.00

STATE OF HAWAII
UNIVERSITY OF HAWAII
COMMUNITY COLLEGES
HAWAII COMMUNITY COLLEGE
STUDENT SERVICES

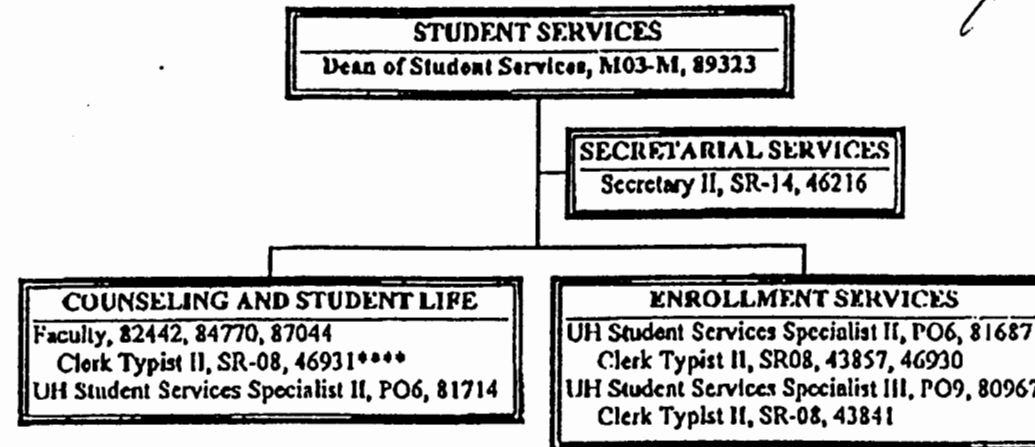
Position Organization Chart

Chart IV

APPROVED PURSUANT TO BOR ACTION:

J. T. Tsunoda
for JOYCE TSUNODA
SENIOR VICE PRESIDENT AND CHANCELLOR,
FOR COMMUNITY COLLEGES

DATE: May 16, 1997



SUPERSEDED
Date _____

Footnote added to explain
July 1, 1997 effective date

****Clerk Typist reports to the Senior Faculty Position of Counseling & Student Life

	<u>Perm</u>	<u>Temp</u>
General Fund	12.00	0.00

STATE OF HAWAII
 UNIVERSITY OF HAWAII
 COMMUNITY COLLEGES
 HAWAII COMMUNITY COLLEGE
 UNIVERSITY OF HAWAII CENTER, WEST HAWAII

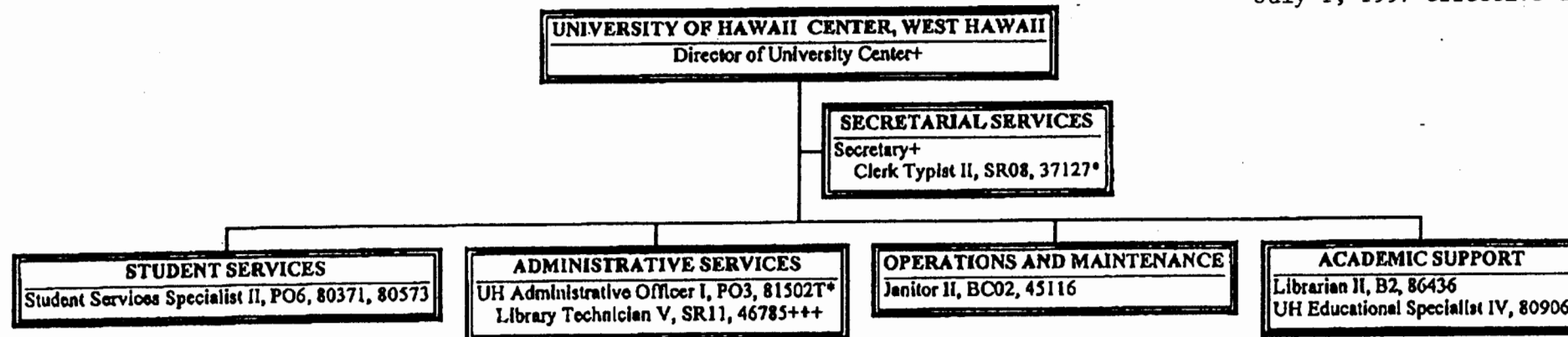
Position Organization Chart

Chart VII

SUPERSEDED

Date _____

Footnote added to explain
 July 1, 1997 effective date



APPROVED BY THE UNIVERSITY
 BOARD OF REGENTS
 MAY 16 1997

Date _____

*Temporary Position
 +Temporary Position to be established
 +++46785, Library Tec V SR11 to be redescribed

	Perm	Temp
General Fund	6.00	2.00

STATE OF HAWAII
UNIVERSITY OF HAWAII
COMMUNITY COLLEGES
HAWAII COMMUNITY COLLEGE

Organization Chart

Chart I

SUPERSEDED
Date MAY 16 1997

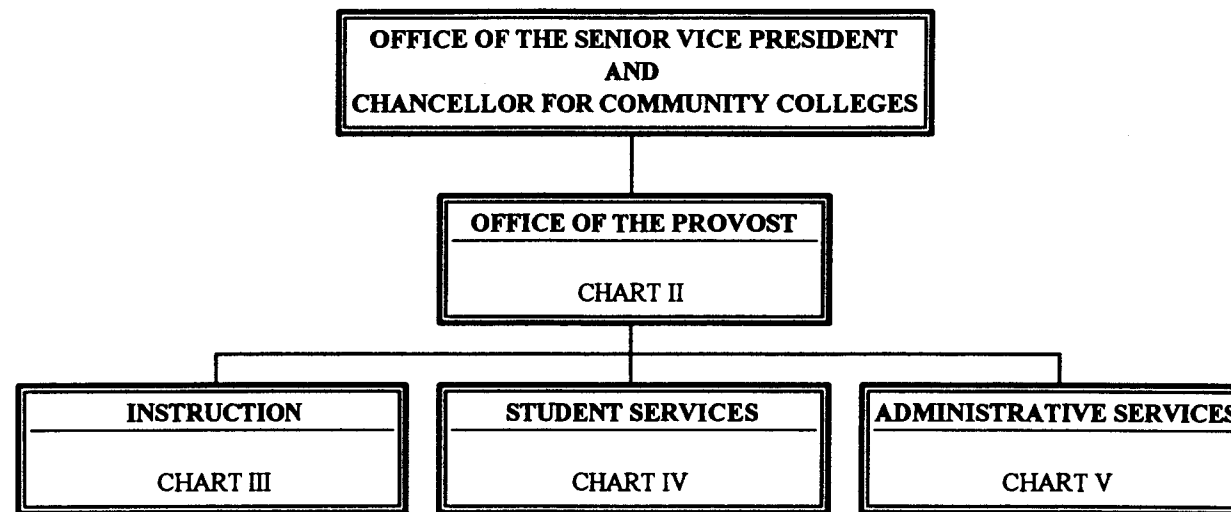
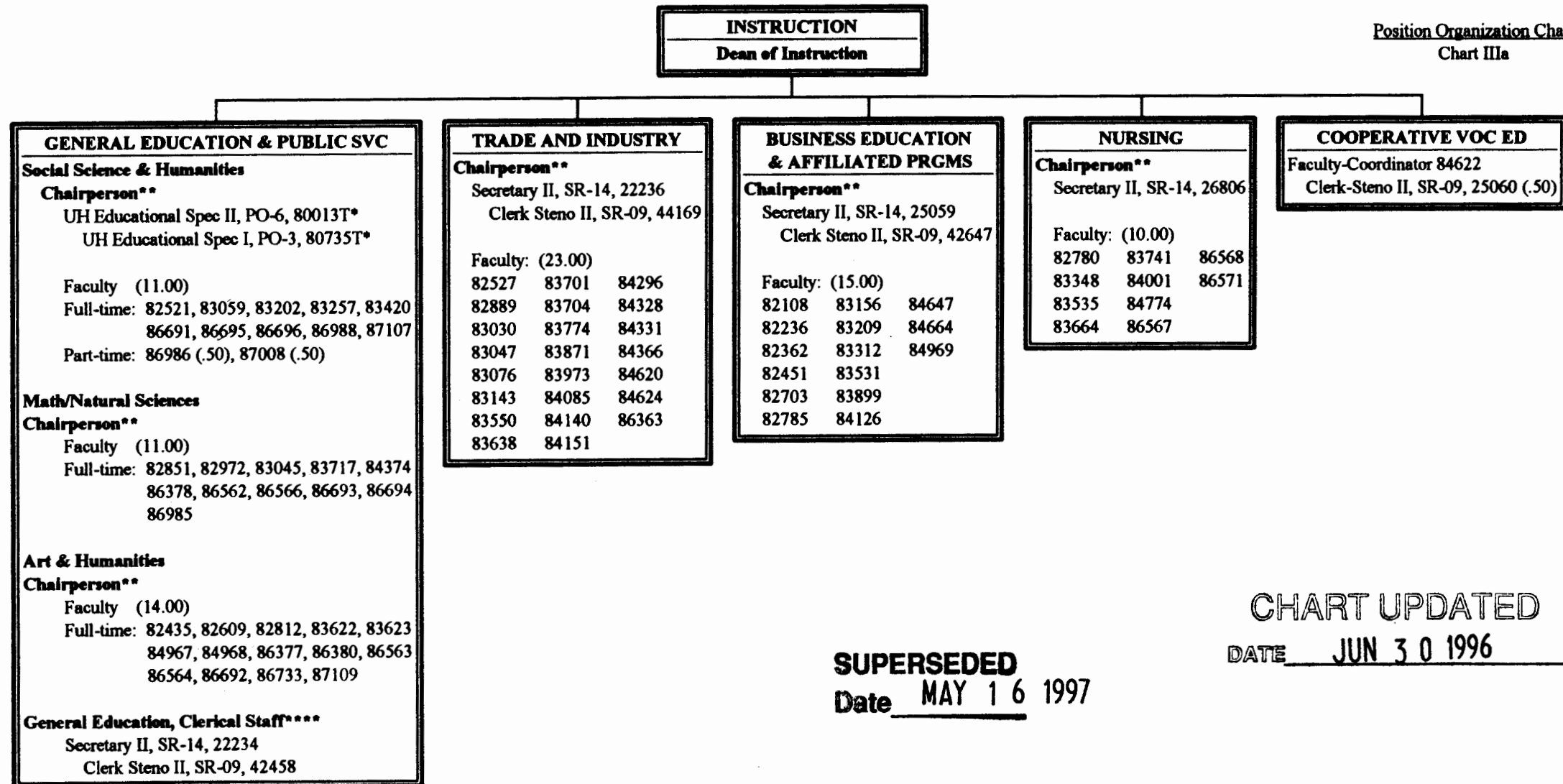


CHART UPDATED
DATE JUN 30 1996

STATE OF HAWAII
UNIVERSITY OF HAWAII
COMMUNITY COLLEGES
HAWAII COMMUNITY COLLEGE
INSTRUCTION

Position Organization Chart
Chart IIIa



SUPERSEDED
Date MAY 16 1997

CHART UPDATED
DATE JUN 30 1996

* Temporary Position
 **Chairperson is appointed from among faculty positions within department.
 ****Secretarial and Clerical staff serves all three General Education Departments.

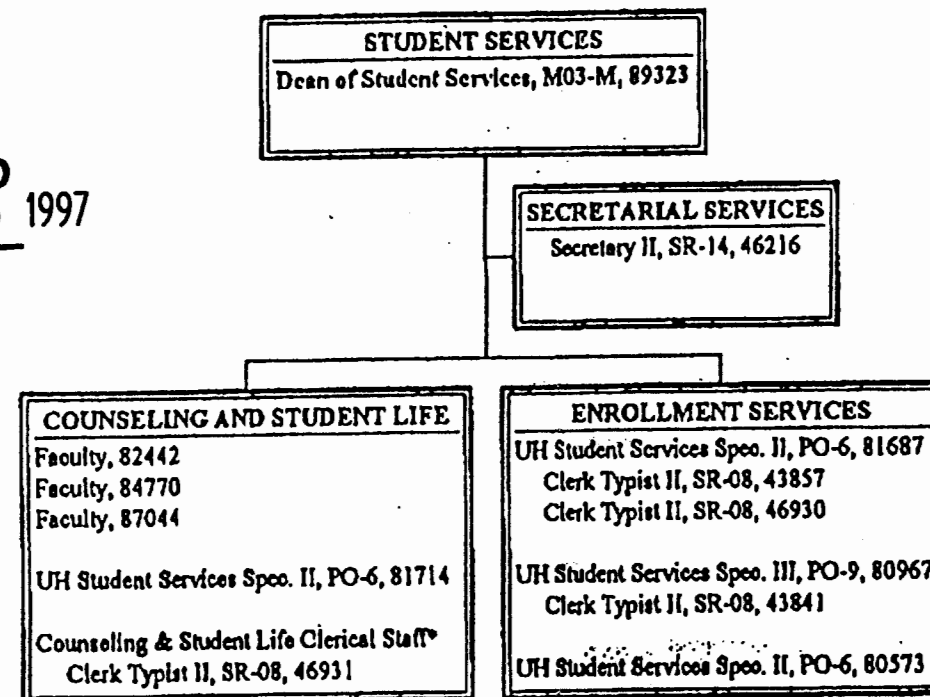
	Perm	Temp
General Funds	92.50	2.00

STATE OF HAWAII
UNIVERSITY OF HAWAII
COMMUNITY COLLEGS
HAWAII COMMUNITY COLLEGE
STUDENT SERVICES

Position Organization Chart

Chart IV

SUPERSEDED
Date MAY 16 1997



APPROVED / DISAPPROVED:
James L. Iannada 7/24/96
SENIOR VICE PRESIDENT / DATE
CHANCELLOR FOR COMMUNITY COLLEGES

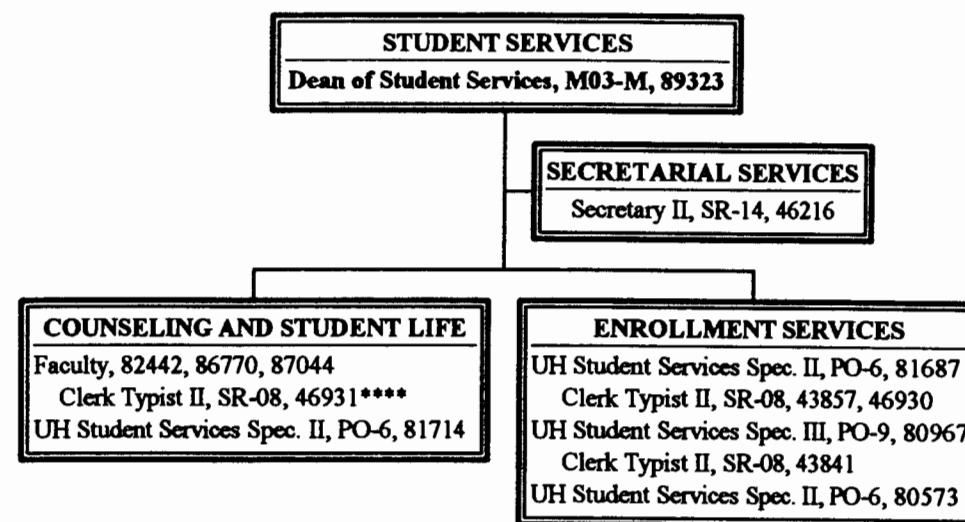
*Clerical staff serves entire Counseling and Student Life Department

	Perm	Temp
General Funds	13.00	0.00

STATE OF HAWAII
UNIVERSITY OF HAWAII
COMMUNITY COLLEGES
HAWAII COMMUNITY COLLEGE
STUDENT SERVICES

Position Organization Chart

Chart IV



SUPERSEDED
Date JUL 30 1996

CHART UPDATED
DATE JUN 30 1996

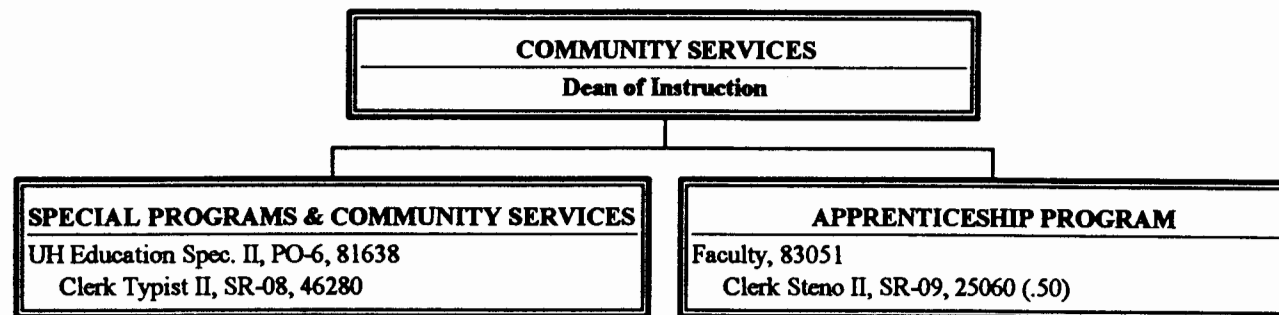
****Clerk Typist reports to the Senior Faculty Position of Counseling & Student Life

	Perm	Temp
General Funds	13.00	0.00

STATE OF HAWAII
UNIVERSITY OF HAWAII
COMMUNITY COLLEGES
HAWAII COMMUNITY COLLEGE
COMMUNITY SERVICES

Position Organization Chart

Chart IIIc



SUPERSEDED
Date JUL - 1 1996

CHART UPDATED
DATE JUN 30 1996

	<u>Perm</u>	<u>Temp</u>
General Funds	3.50	0.00