

STATE OF HAWAII  
UNIVERSITY OF HAWAII  
HONOLULU COMMUNITY COLLEGE

Organization Chart  
Chart I

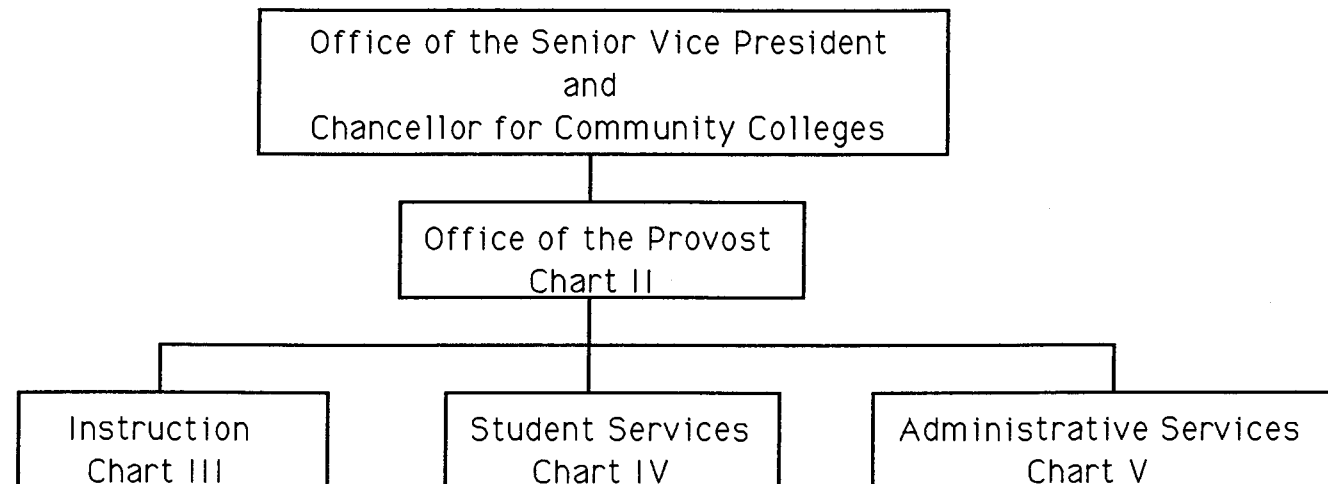
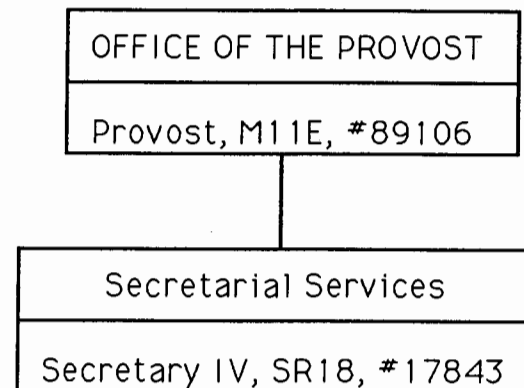


CHART UPDATED  
JUN 30 1996  
DATE \_\_\_\_\_

STATE OF HAWAII  
UNIVERSITY OF HAWAII  
HONOLULU COMMUNITY COLLEGE  
OFFICE OF THE PROVOST

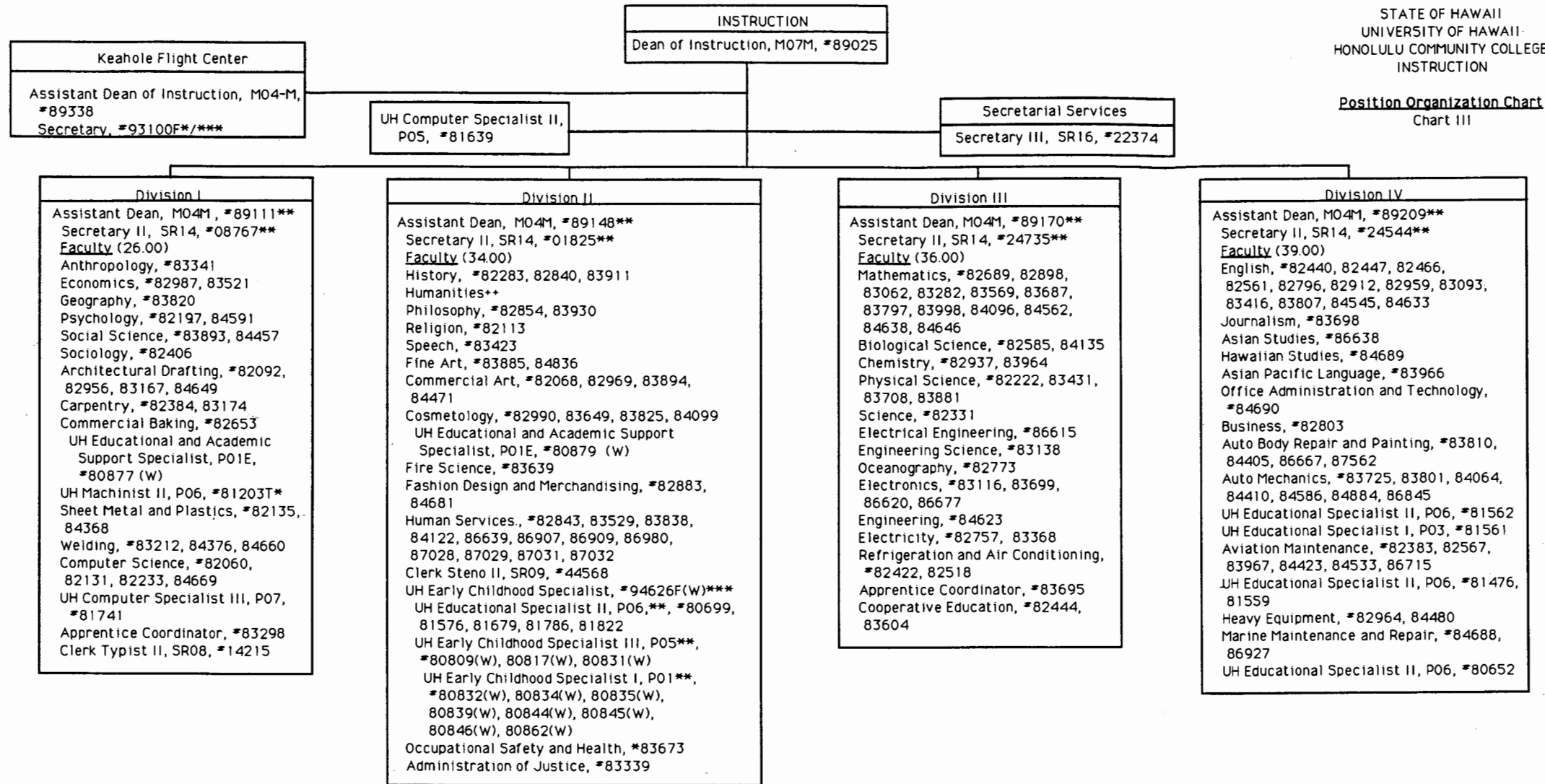
Position Organization Chart  
Chart II



Pending Establishment  
Administrative Assistant, #93651F

**CHART UPDATED**  
DATE JUN 30 1996

General Fund      Perm  
3.00



\*Temporary Position  
 \*\*Rotating Position  
 \*\*\*Position to be established  
 ++Courses to be taught by lecturers as needed

	<u>Perm</u>	<u>Temp</u>
General Fund	160.00	2.00
(W) Revolving Funds	14.00	

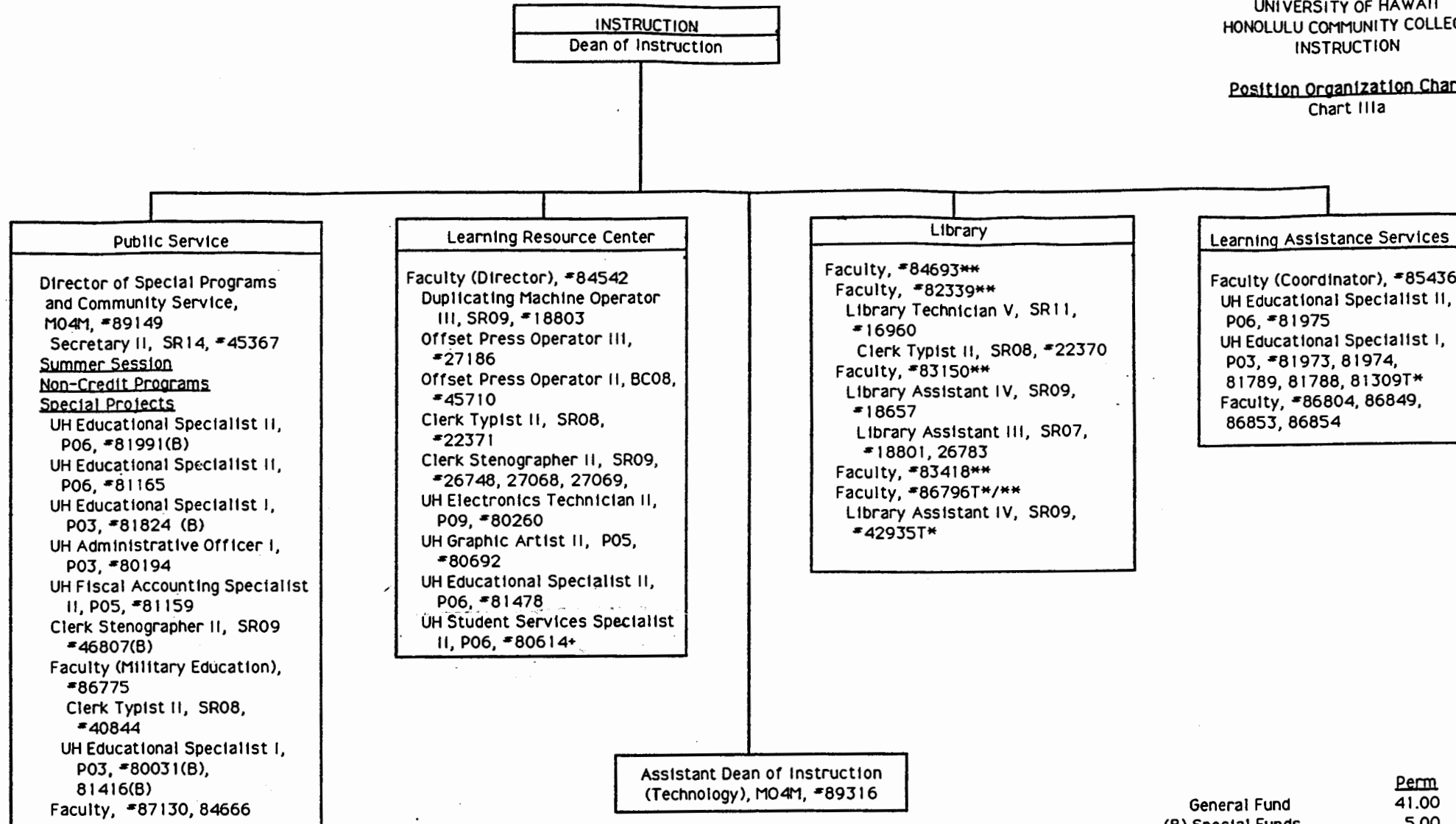
APPROVED:

  
 JOYCE S. TSUNODA  
 SVP/Chancellor for Community Colleges

4/20/97  
 Date

STATE OF HAWAII  
UNIVERSITY OF HAWAII  
HONOLULU COMMUNITY COLLEGE  
INSTRUCTION

Position Organization Chart  
Chart IIIa



\*Temporary Position  
\*\*Rotating Position  
+To be reclassified

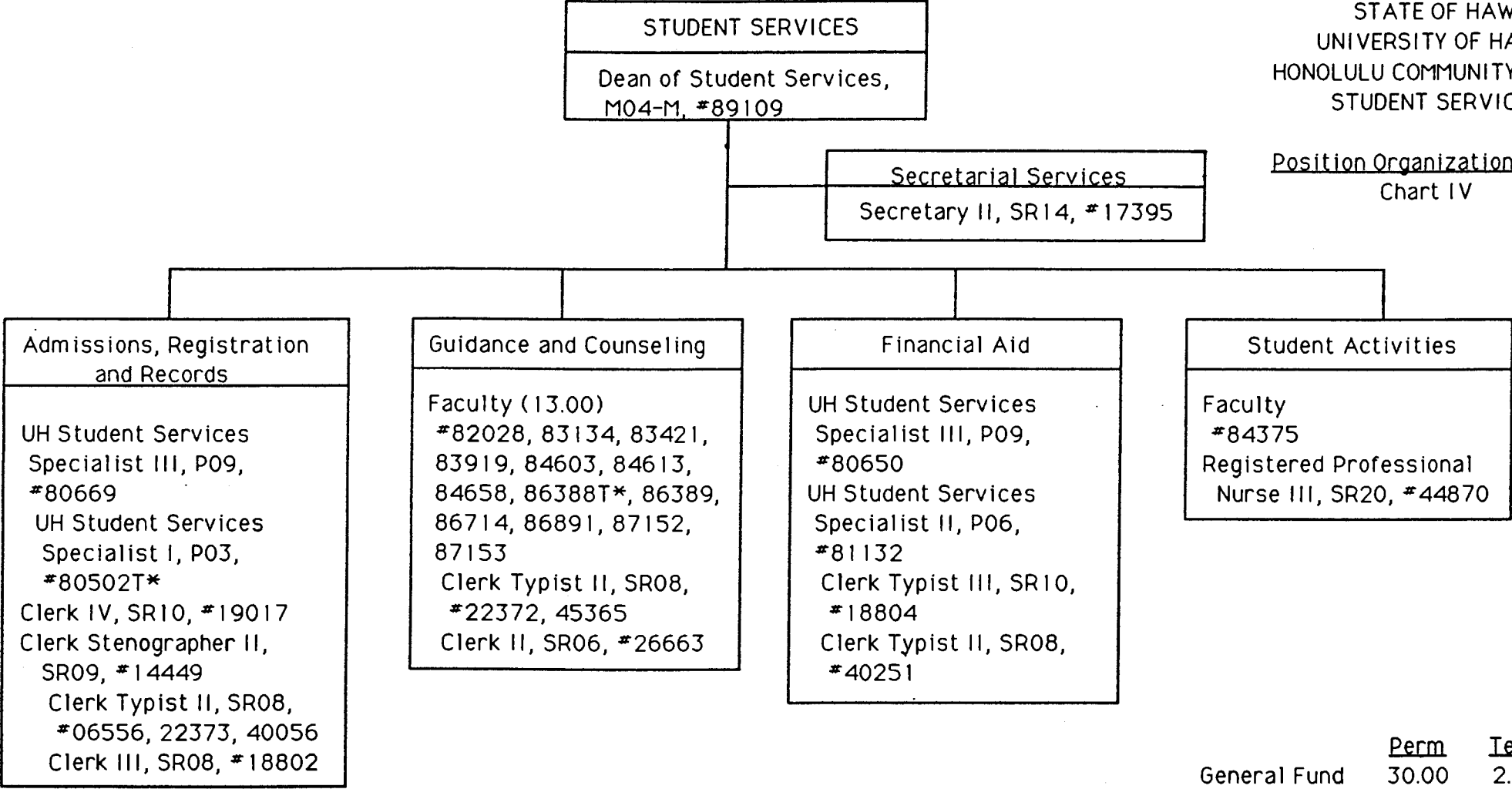
	Perm	Temp
General Fund	41.00	3.00
(B) Special Funds	5.00	

APPROVED:

*Joyce S. Tsunoda* 2/6/97  
JOYCE S. TSUNODA Date  
Senior Vice President and  
Chancellor for Community Colleges

STATE OF HAWAII  
UNIVERSITY OF HAWAII  
HONOLULU COMMUNITY COLLEGE  
STUDENT SERVICES

Position Organization Chart  
Chart IV



INDENT  
14449  
WILL CHANGE  
ON UPDATE  
Ray

\*Temporary Position

APPROVED:

Joyce S. Tsunoda      4/10/97  
JOYCE S. TSUNODA      Date  
Senior VP & Chancellor for Community Colleges

STATE OF HAWAII  
UNIVERSITY OF HAWAII  
HONOLULU COMMUNITY COLLEGE  
ADMINISTRATIVE SERVICES

Position Organization Chart  
Chart V

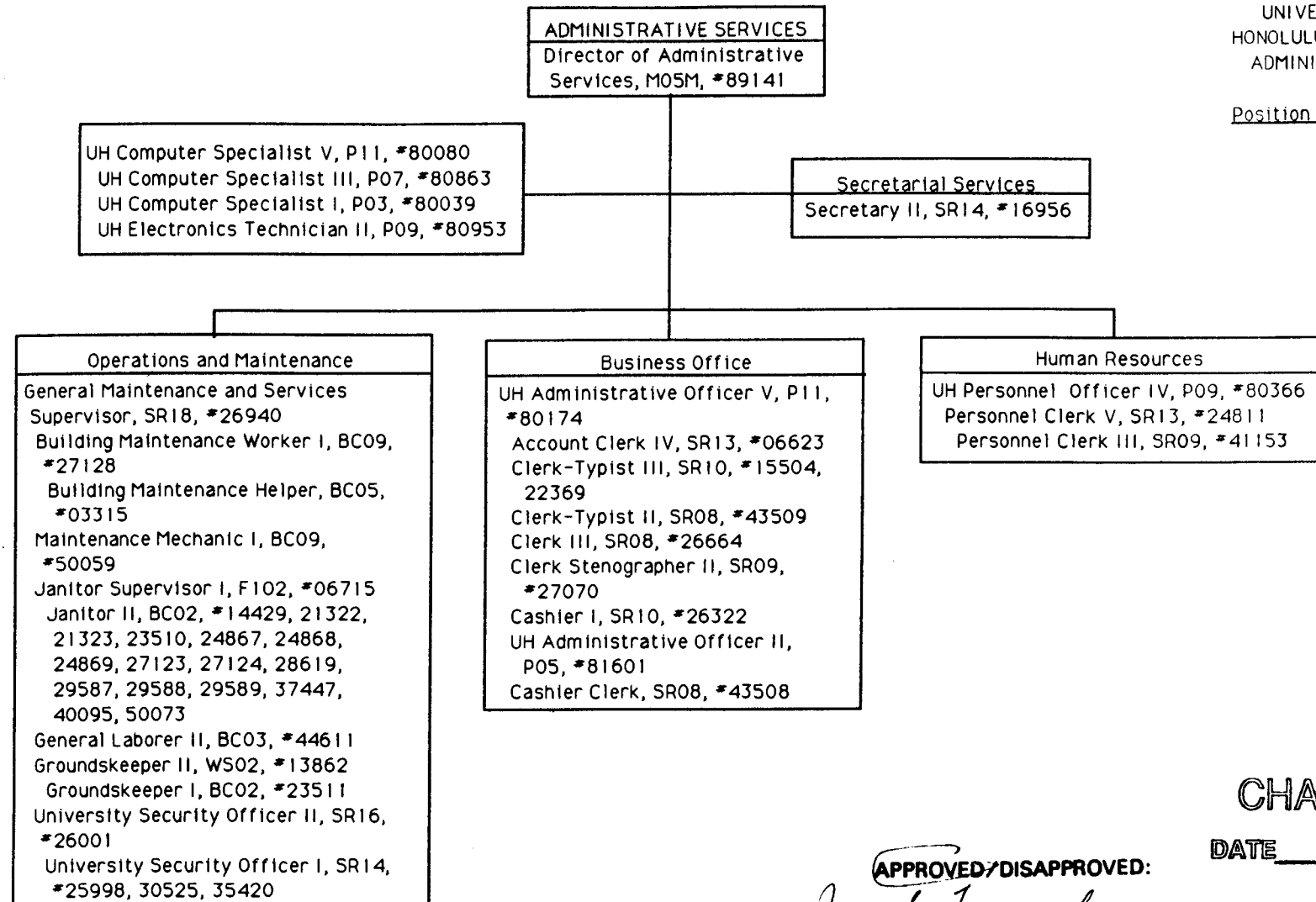


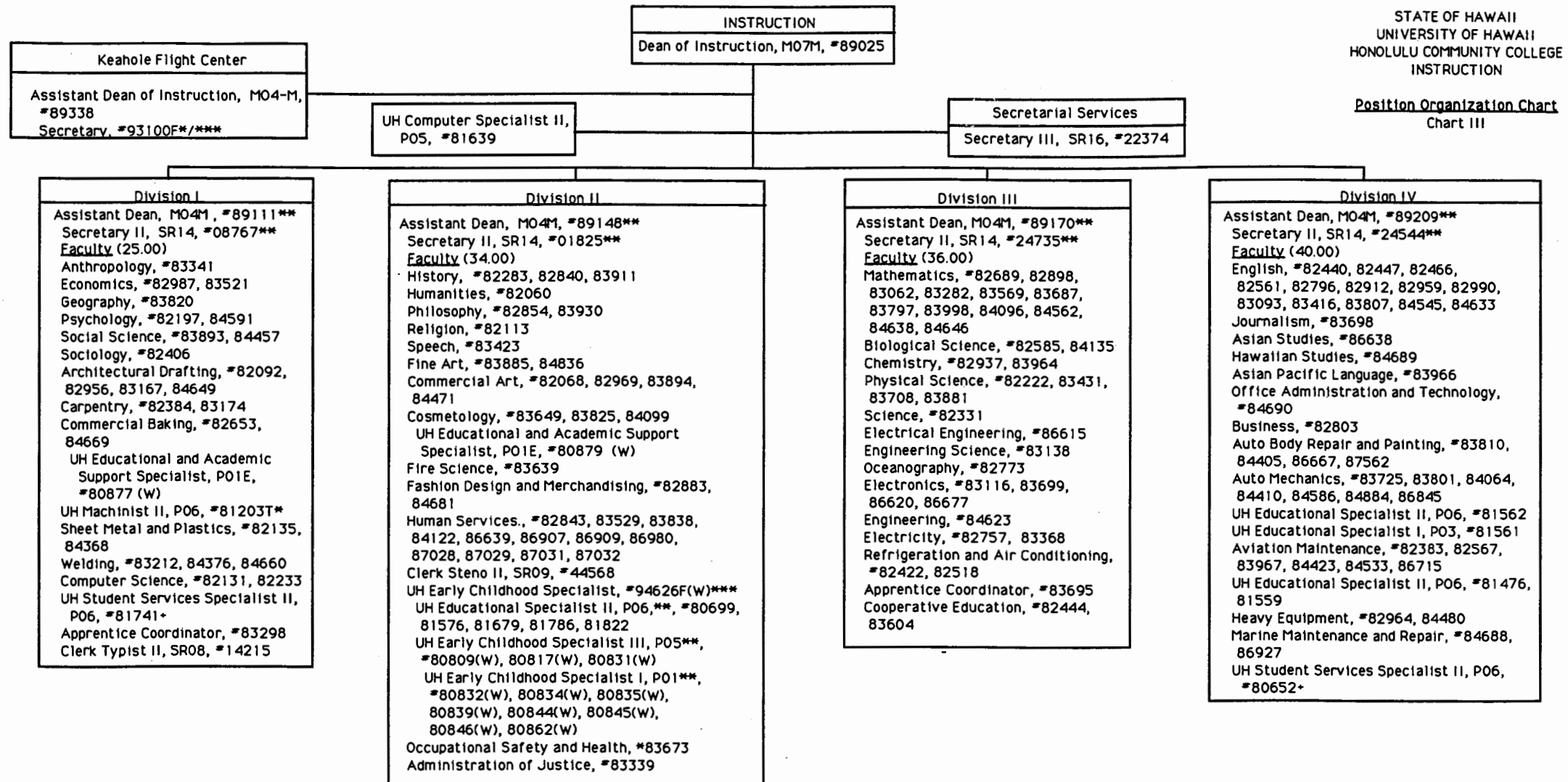
CHART UPDATED  
JUN 30 1996

APPROVED/DISAPPROVED:

*James B. Iannala* 6/30/96  
\_\_\_\_\_  
SENIOR VICE PRESIDENT/  
CHANCELLOR FOR COMMUNITY COLLEGES

DATE \_\_\_\_\_

Perm  
General Fund 47.00



\*Temporary Position  
\*\*Rotating Position  
\*\*\*Position to be established  
+To be reclassified

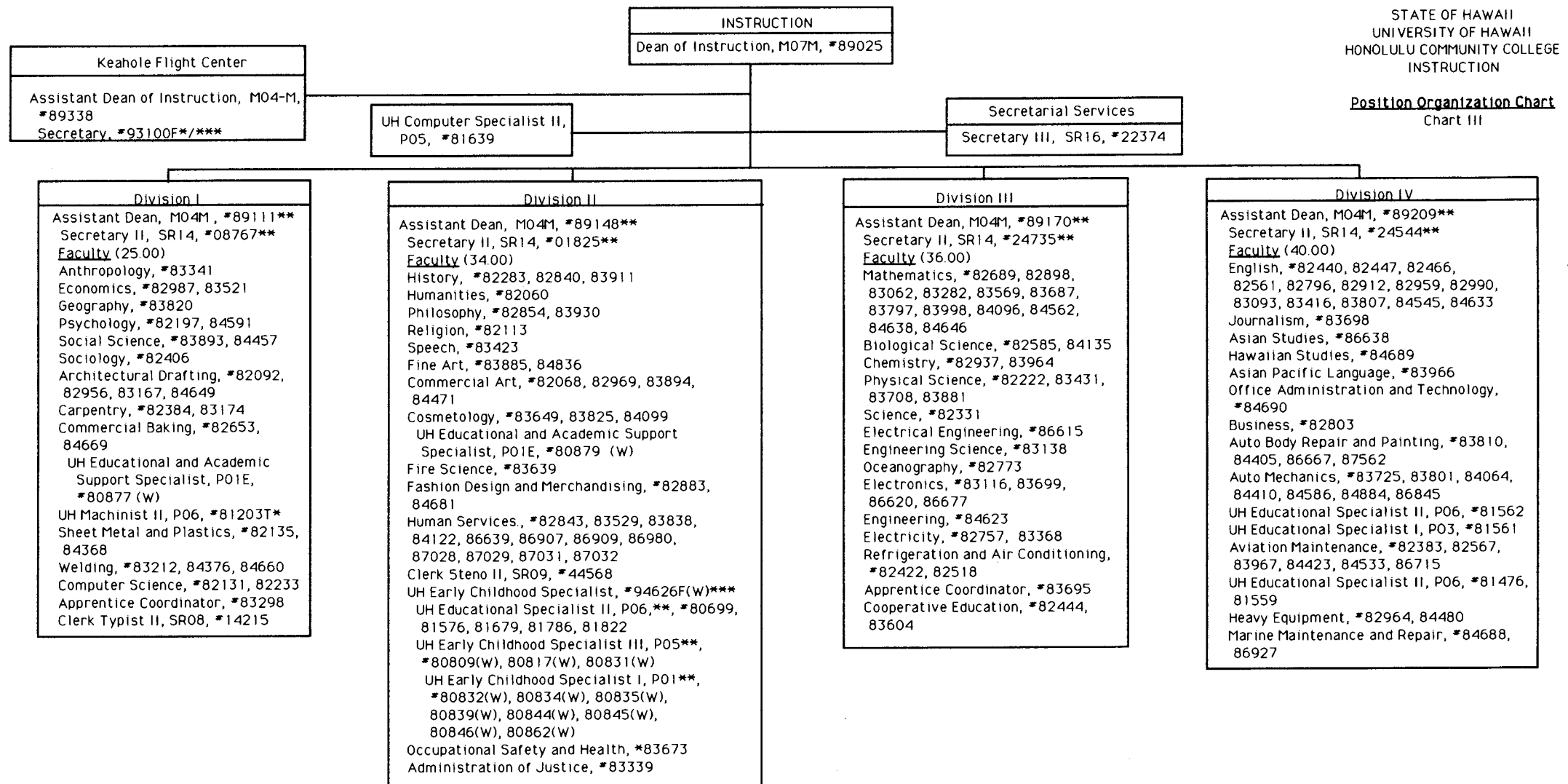
**SUPERSEDED**  
Date JUN 30 1997

APPROVED:

*Joyce S. Tsumoda 2/7/97*  
JOYCE S. TSUNODA  
Senior Vice President and  
Chancellor for Community Colleges

	Perm	Temp
General Fund	160.00	2.00
(W) Revolving Funds	14.00	

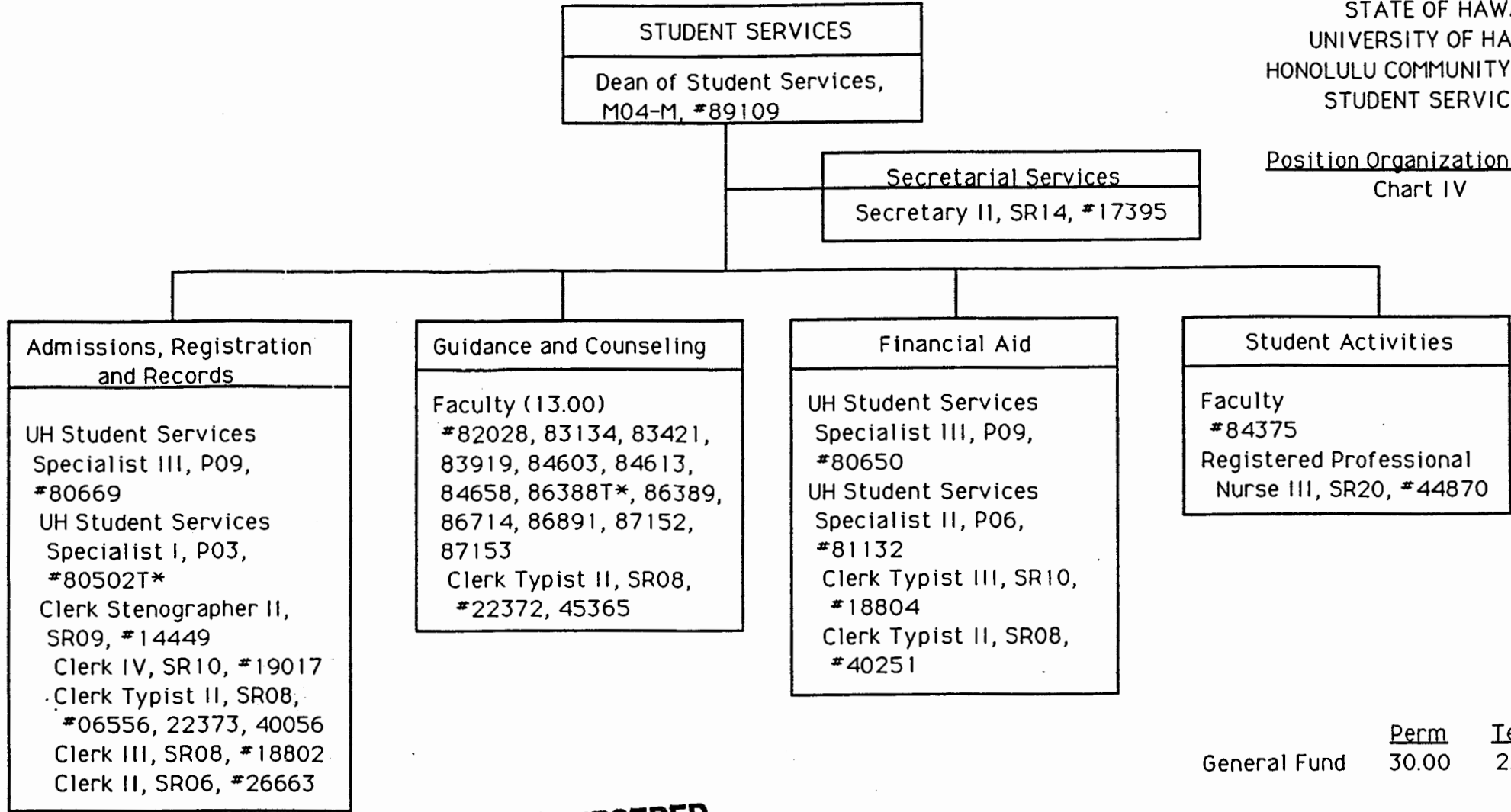
Date





STATE OF HAWAII  
UNIVERSITY OF HAWAII  
HONOLULU COMMUNITY COLLEGE  
STUDENT SERVICES

Position Organization Chart  
Chart IV



	<u>Perm</u>	<u>Temp</u>
General Fund	30.00	2.00

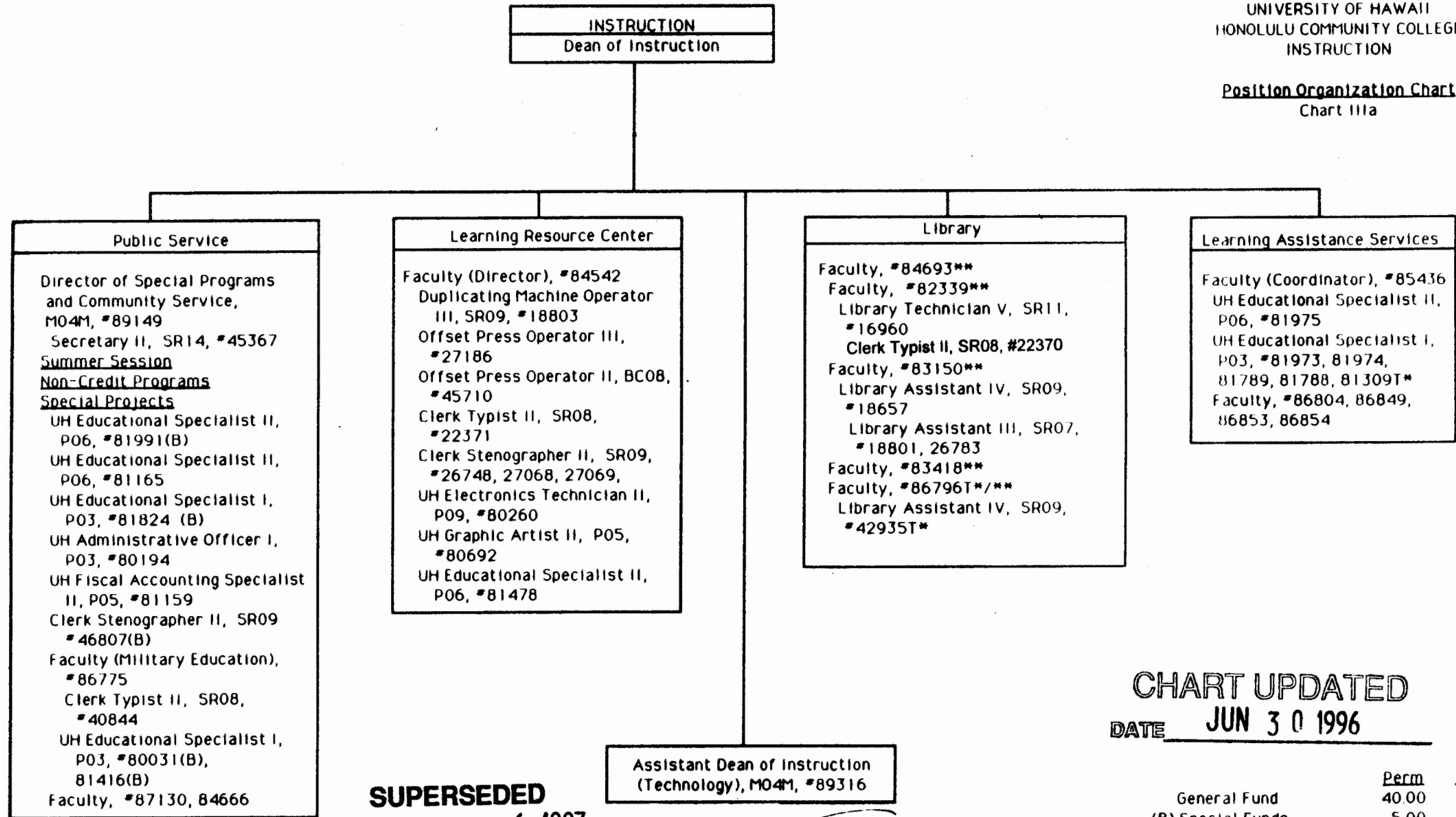
**SUPERSEDED**  
Date APR 10 1997

APPROVED: Joyce S. Tsonoda 2/6/97  
JOYCE S. TSONODA Date  
Senior Vice President and  
Chancellor for Community Colleges

\*Temporary Position

STATE OF HAWAII  
UNIVERSITY OF HAWAII  
HONOLULU COMMUNITY COLLEGE  
INSTRUCTION

Position Organization Chart  
Chart IIIa



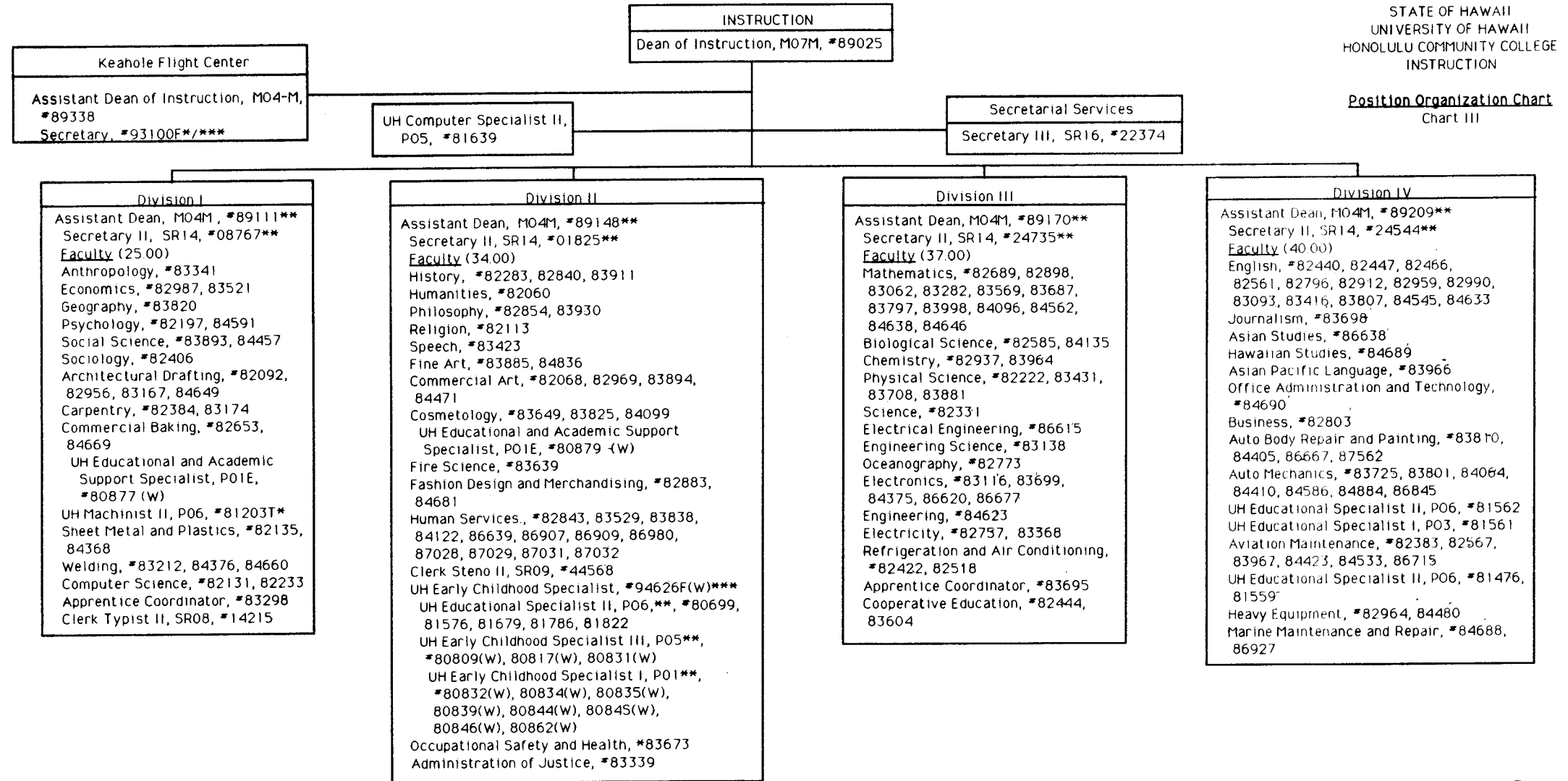
**SUPERSEDED**  
**Date** FEB 6 1997

**APPROVED/DISAPPROVED:**  
*[Signature]* 6/30/96  
SENIOR VICE PRESIDENT/  
CHANCELLOR FOR COMMUNITY COLLEGES

**CHART UPDATED**  
**DATE** JUN 30 1996

	<u>Perm</u>	<u>Temp</u>
General Fund	40.00	3.00
(B) Special Funds	5.00	

\*Temporary Position  
\*\*Rotating Position



\*Temporary Position  
 \*\*Rotating Position  
 \*\*\*Position to be established

**SUPERSEDED**  
 Date AUG 19 1996

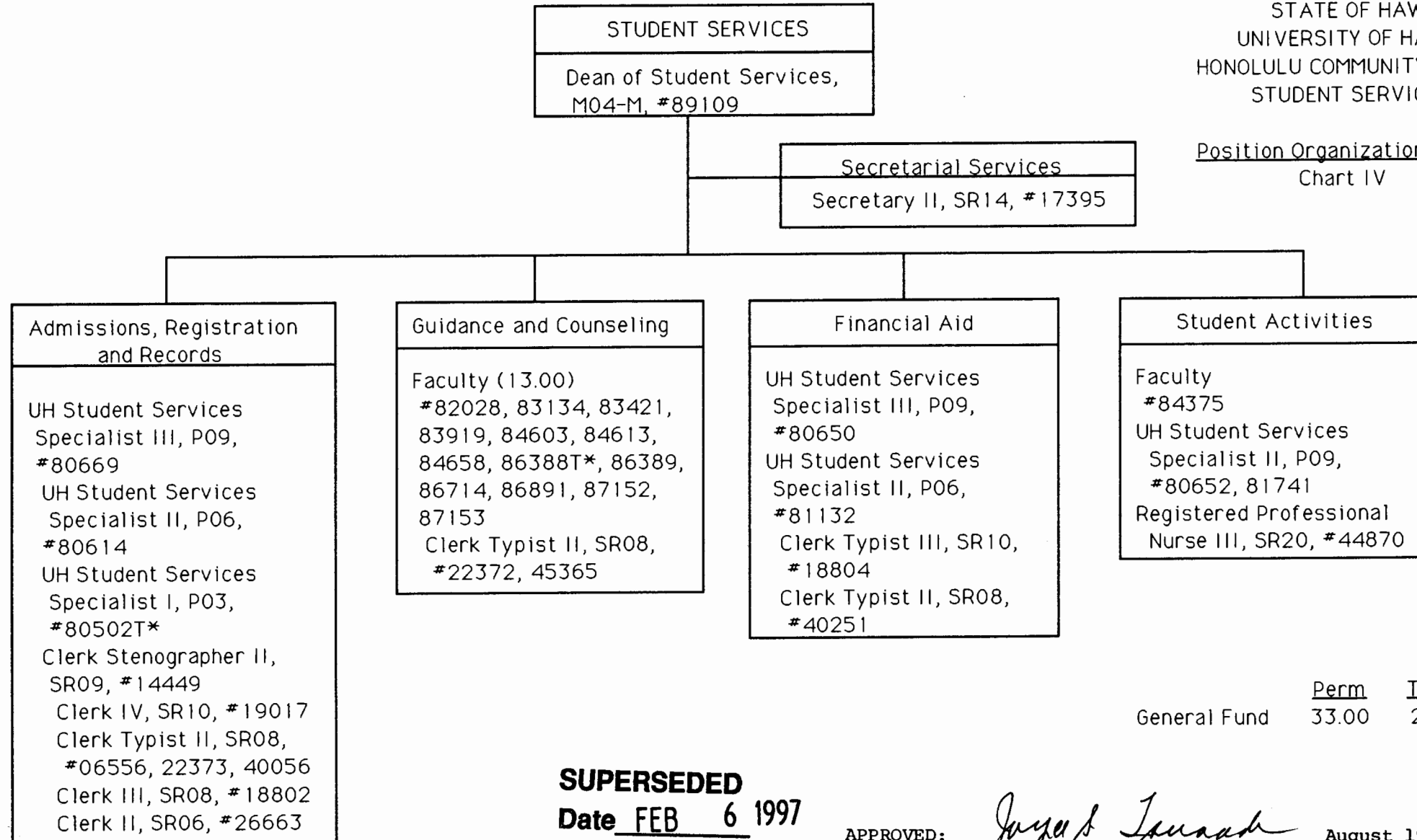
**APPROVED/DISAPPROVED:**  
*Angel S. Fernandez* 6/30/96  
 SENIOR VICE PRESIDENT/ DATE  
 CHANCELLOR FOR COMMUNITY COLLEGES

	<u>Perm</u>	<u>Temp</u>
General Fund	159.00	2.00
(W) Revolving Funds	14.00	

**CHART UPDATED**  
 DATE JUN 30 1996

STATE OF HAWAII  
UNIVERSITY OF HAWAII  
HONOLULU COMMUNITY COLLEGE  
STUDENT SERVICES

Position Organization Chart  
Chart IV



	<u>Perm</u>	<u>Temp</u>
General Fund	33.00	2.00

\*Temporary Position

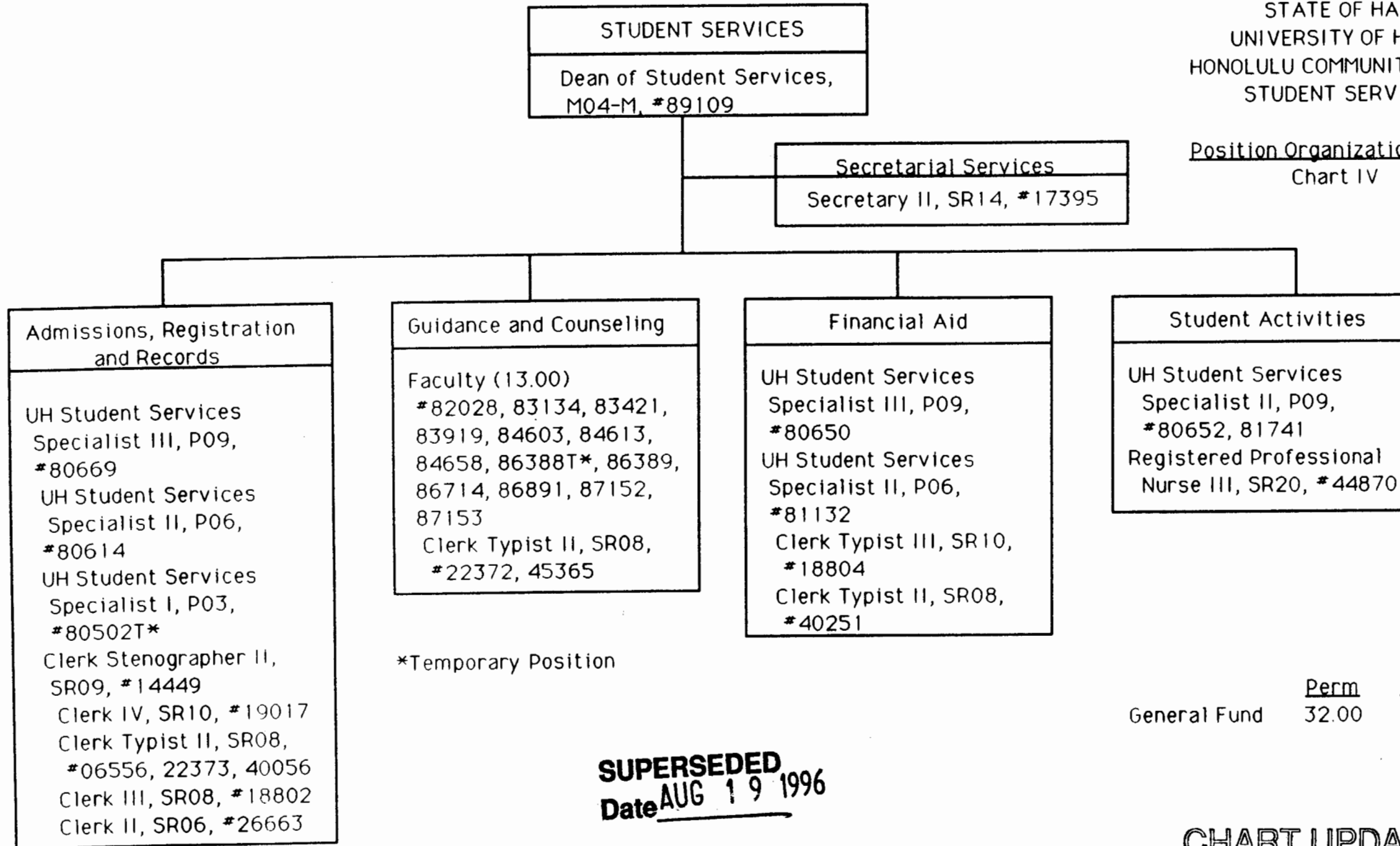
**SUPERSEDED**  
Date FEB 6 1997

APPROVED:

*Joyce S. Tsunoda*  
JOYCE S. TSUNODA  
Senior Vice President and  
Chancellor for Community Colleges  
August 19, 1996

STATE OF HAWAII  
UNIVERSITY OF HAWAII  
HONOLULU COMMUNITY COLLEGE  
STUDENT SERVICES

Position Organization Chart  
Chart IV



**SUPERSEDED**  
Date AUG 19 1996

	<u>Perm</u>	<u>Temp</u>
General Fund	32.00	2.00

**CHART UPDATED**  
DATE JUN 30 1996