

STATE OF HAWAII  
UNIVERSITY OF HAWAII  
KAPIOLANI COMMUNITY COLLEGE

Organization Chart

Chart I

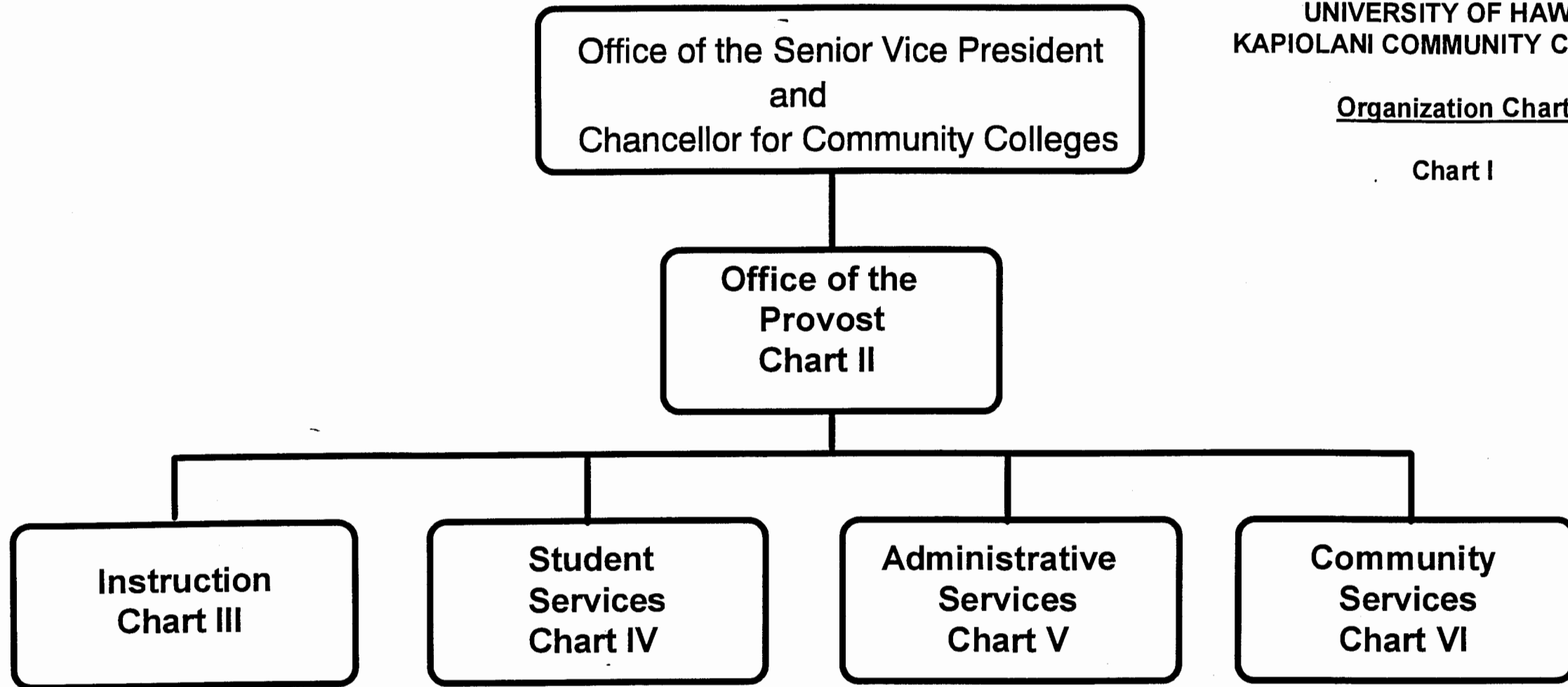
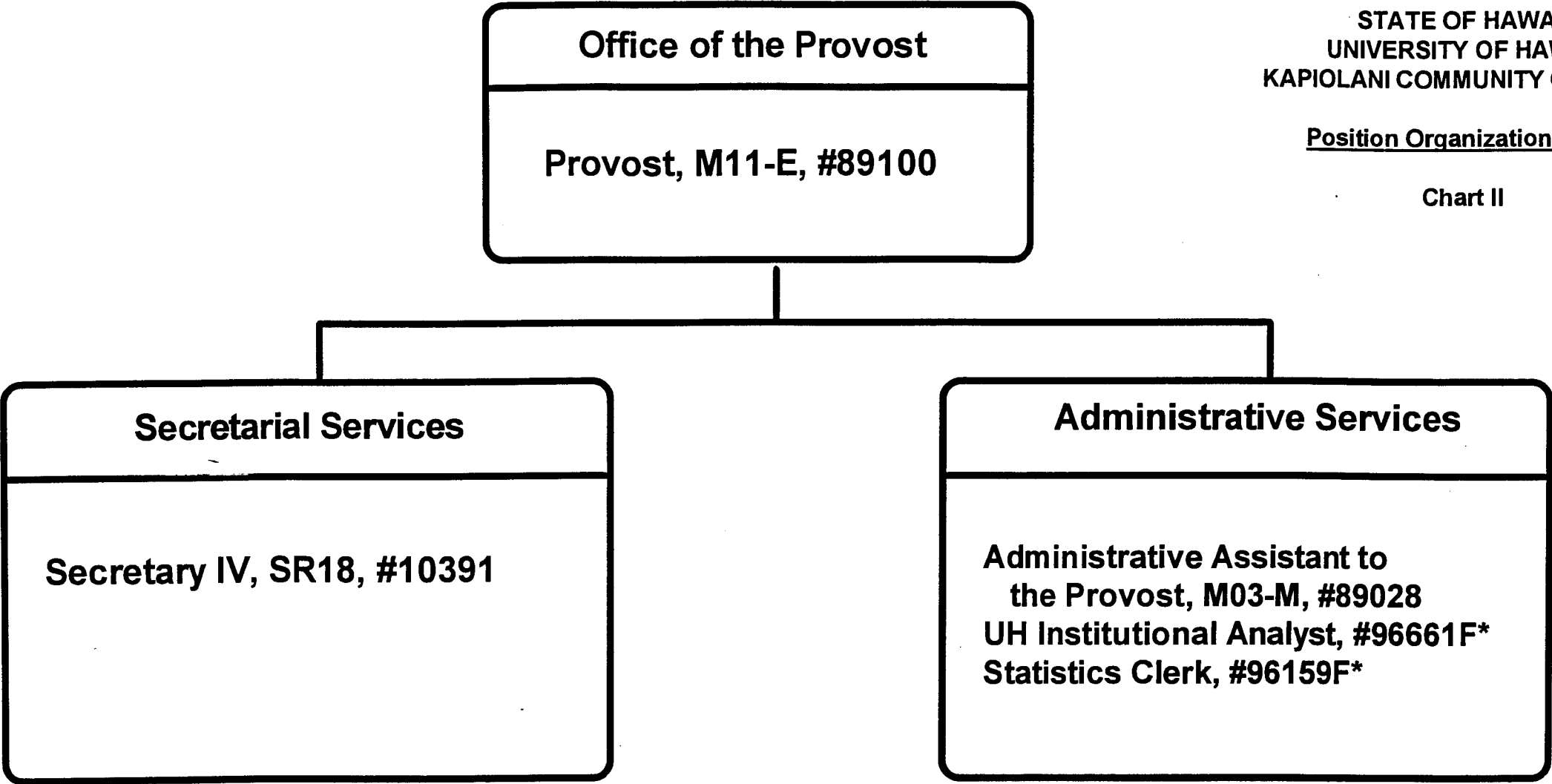


CHART UPDATED  
DATE JUN 30 1996

STATE OF HAWAII  
UNIVERSITY OF HAWAII  
KAPIOLANI COMMUNITY COLLEGE

Position Organization Chart

Chart II



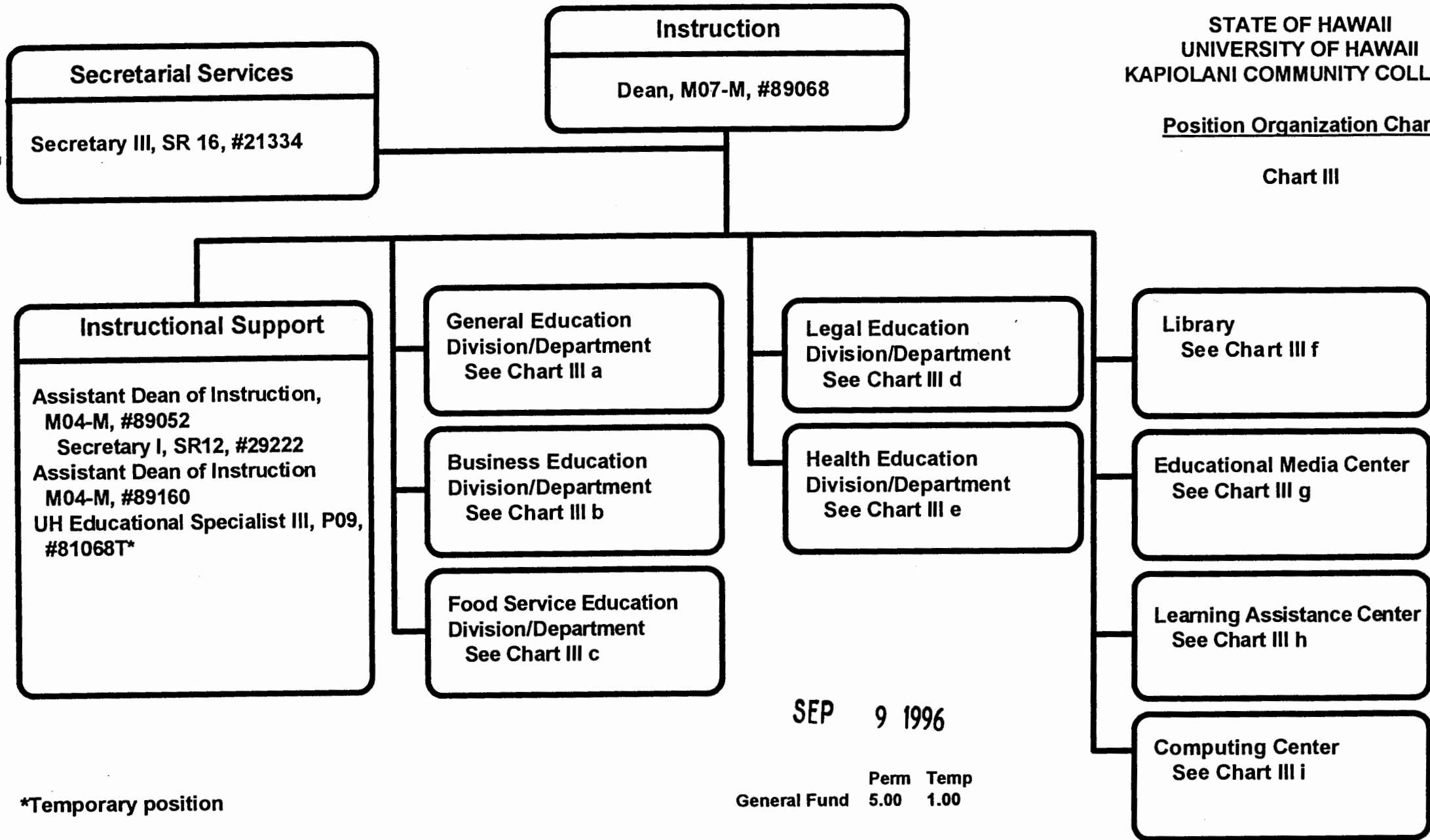
\*Temporary position

CHART UPDATED  
DATE JUN 30 1996  
General Fund    Perm 3.00    Temp 2.00

STATE OF HAWAII  
UNIVERSITY OF HAWAII  
KAPIOLANI COMMUNITY COLLEGE

Position Organization Chart

Chart III



SEP 9 1996

\*Temporary position

	Perm	Temp
General Fund	5.00	1.00

## General Education Division/Department

### Social Science

#### Chairperson\*\*

#### Faculty (12.00)

Full-time: #82152, #82706, #82935, #83492, #83560, #83642, #83745, #84972, #84973, #86599, #86938, #87403

### Language Arts

#### Chairperson\*\*

#### Faculty (28.00)

Full-time: #82178, #82232, #82555, #82776, #82876, #83123, #83308, #83447, #83559, #83783, #83795, #83870, #83903, #84327, #84409, #86594, #86595, #86596, #86604, #86798, #86803, #86960, #86945, #87084T\*, #87143T\*, #87583T\*, #87612T\*

Part-time: #86799 (.50), #82540 (.50)

### Mathematics/Science

#### Chairperson\*\*

#### Faculty (25.00)

Full-time: #82031, #82394, #82492, #82910, #82981, #83096, #83262, #83357, #83688, #83733, #83939, #83974, #84458, #86592, #86593, #86600, #86606, #86718, #86754, #86827, #86830, #86959, #87401, #86947T\*, #88032T\*

UH Educational Specialist I, P03, #81246

### Humanities

#### Chairperson\*\*

#### Faculty (19.00)

Full-time: #82052, #82231, #82607, #82631, #82925, #82983, #83094, #83809, #84470, #84882, #84971, #84974, #86602, #86937, #87402, #87404, #86696T\*, #87072T\*, #87074T\*

### General Education, Clerical Staff\*\*\*\*

Secretary II, SR 14, #22313

Clerk-Typist II, SR08, #26658, #22310

Clerk-Typist II, SR08, #47900 (.50)

\* Temporary position

\*\*Chairperson is appointed from among faculty positions within department.

\*\*\*\*Secretarial and Clerical staff serve all four General Education Departments--Social Science, Language Arts, Mathematics/Science, and Humanities.

## STATE OF HAWAII UNIVERSITY OF HAWAII KAPIOLANI COMMUNITY COLLEGE INSTRUCTION

### Position Organization Chart

#### Chart III a

	Perm	Temp
General Fund	79.50	9.00

APPROVED/DISAPPROVED:

*J. J. L. L. L.* 9/9/96  
\_\_\_\_\_  
SENIOR VICE PRESIDENT / DATE  
CHANCELLOR FOR COMMUNITY COLLEGES

## Business Education Division/Department

### Chairperson\*\*

Secretary II, SR 14, #22312

Clerk-Typist II, SR 08, #47612 (.50)

### Faculty

Accounting/Data Processing (11.00)

Full-time: #82026, #82066, #82503, #82728, #82795, #82931,  
#83221, #84337, #86591, #86598, #87123

Business Administration (7.00)

Full-time: #82218, #82348, #82389, #82429, #83734, #84150,  
#84369

\*\*Chairperson is appointed from among faculty positions within department.

STATE OF HAWAII  
UNIVERSITY OF HAWAII  
KAPIOLANI COMMUNITY COLLEGE  
INSTRUCTION

### Position Organization Chart

Chart III b

	Perm
General Fund	19.50

APPROVED/DISAPPROVED:

*[Signature]* 9/9/96  
\_\_\_\_\_  
SENIOR VICE PRESIDENT / DATE  
CHANCELLOR FOR COMMUNITY COLLEGES

**Food Service and Hospitality Education  
Division/Department**

**Chairperson\*\***

Secretary II, SR 14, #16962

Cook III, WS 08, #22318 (W), #32863 (W)

Purchasing Technician I, SR 11, #29010 (W)

Snack Bar Cashier, SR 06, #22319 (W)

UH Educational & Academic Support Specialist, P01,  
#81420 (W), #81422 (W)

**Faculty (15.00)**

Full-time: #82467, #82683, #82970, #83133, #83225, #83460,  
#83684, #83901, #84091, #84103, #84304, #84539,  
#86597, #86670, #86719

**\*\*Chairperson is appointed from among faculty positions within department.**

**STATE OF HAWAII  
UNIVERSITY OF HAWAII  
KAPIOLANI COMMUNITY COLLEGE  
INSTRUCTION**

**Position Organization Chart**

**Chart III c**

	<b>Perm</b>
<b>General Fund</b>	<b>16.00</b>
<b>(W) Revolving Funds</b>	<b>6.00</b>

**CHART UPDATED**  
**JUN 30 1996**  
**DATE** \_\_\_\_\_

## Legal Education Division/Department

### Chairperson\*\*

Secretary II, SR 14, #18092

### Faculty (3.50)

Full-time: #82380, #83071, #83360

Part-time: #84370 (.50)

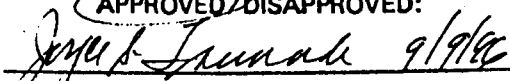
\*\*Chairperson is appointed from among instructional positions within department.

## STATE OF HAWAII UNIVERSITY OF HAWAII KAPIOLANI COMMUNITY COLLEGE INSTRUCTION

### Position Organization Chart

Chart III d

General Fund	Perm
	4.50

APPROVED/DISAPPROVED:  
  
\_\_\_\_\_  
SENIOR VICE PRESIDENT / DATE  
CHANCELLOR FOR COMMUNITY COLLEGES

## Health Education Division/Department

### Health Sciences

#### Chairperson\*\*

Secretary II, SR14, #32952

Clerk-Steno II, SR09, #40964 (.50)

#### Faculty (16.10)

Full-time: #82121, #82162, #82405, #84326, #82576, #83310, #83321, #83667, #84223, #85821, #86384,

#86385, #86741, #86752, #86882, #86886

Part-time: #87052 (.10)

### Nursing

#### Chairperson\*\*

Secretary II, SR14, #18093

Clerk-Typist II, SR08, #42015

#### Faculty (30.50)

Full-time: #82064, #82513, #84487, #84629, #84655, #86737, #86738, #86740, #86742, #86743,

#86746, #86747, #86749, #86750, #86751, #86774, #86776, #86777, #86778, #86832,

#86833, #86834, #86836, #86837, #86838, #86839, #86840

Part-time: #82244 (.50), #84308 (.50), #86581 (.50), #86736 (.50), #86739 (.50), #88072 (.50), #88074 (.50)

### Emergency Medical Services

#### Chairperson\*\*

Secretary II, SR14, #37300

Clerk-Typist II, SR08, #35641

#### Oahu Faculty (7.50)

Full-time: #86705, #86807, #86808, #86809, #87047, #87110, #87440

Part-time: #97663F\*\*\* (.25 FTE), #97657F\*\*\* (.25 FTE)

#### Hawaii Faculty (2.00)

Full-time+: #84739, #84740

Clerk-Typist II, SR08, #33867

#### Kauai Faculty (1.00)

Full-time: #84754

Clerk-Typist II, SR08, #33868 (.50 FTE)

#### Maul Faculty (2.00)

Full-time+: #85871, #88040

Clerk-Typist II, SR08, #33866 (.50 FTE)

\*\*Chairperson is appointed from among faculty positions within department.

\*\*\*Position to be established.

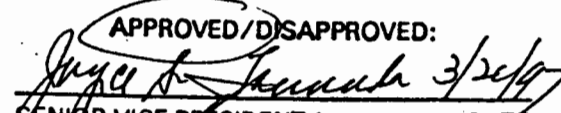
+One supervisor is assigned from among the faculty positions within the Island.

## STATE OF HAWAII UNIVERSITY OF HAWAII KAPIOLANI COMMUNITY COLLEGE INSTRUCTION

### Position Organization Chart

### Chart III e

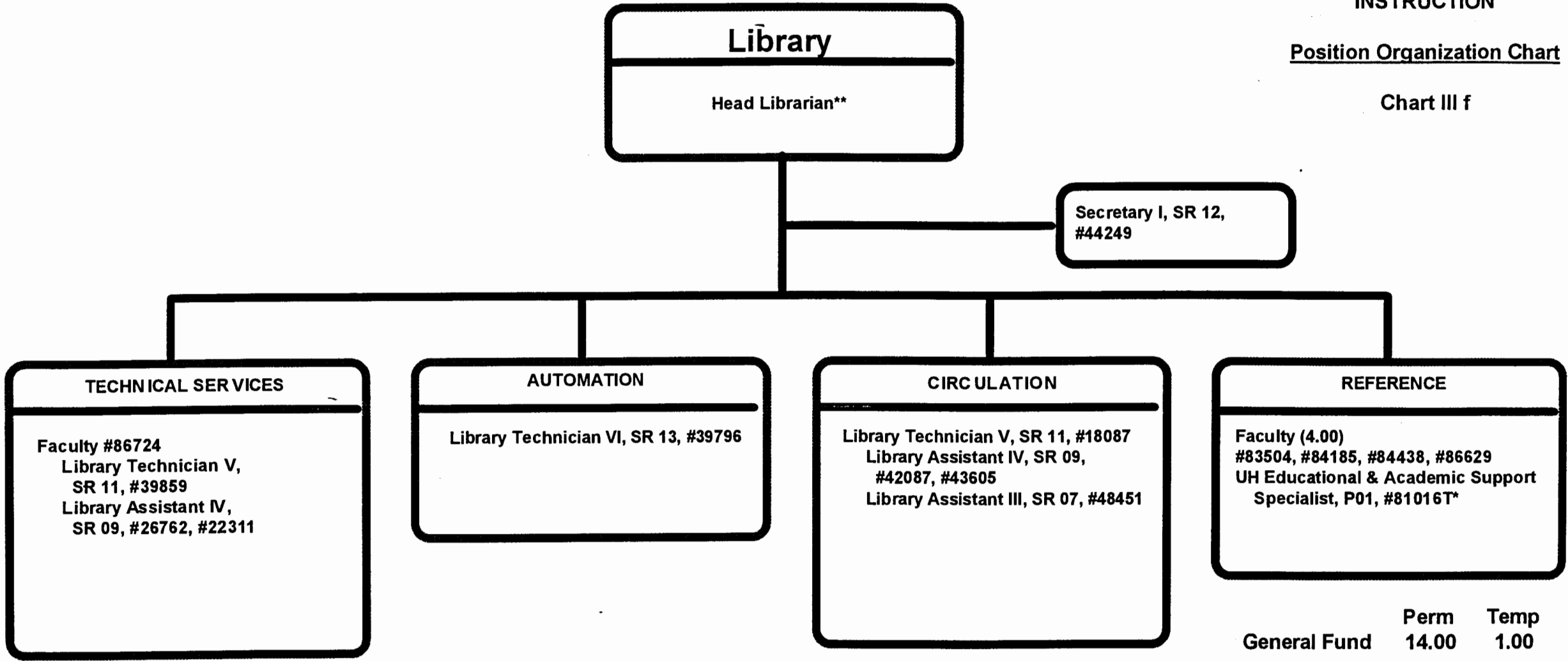
	<u>Perm</u>
General Fund	66.60

APPROVED/DISAPPROVED:  
  
\_\_\_\_\_  
3/26/97  
DATE  
SENIOR VICE PRESIDENT /  
CHANCELLOR FOR COMMUNITY COLLEGES

STATE OF HAWAII  
UNIVERSITY OF HAWAII  
KAPIOLANI COMMUNITY COLLEGE  
INSTRUCTION

Position Organization Chart

Chart III f



\* Temporary position

\*\*Unit Head/Chairperson is appointed from among faculty positions within the unit/department.

CHART UPDATED

DATE JUN 30 1996

## Educational Media Center

### Unit Head/Chairperson\*\*

Faculty #82386, #87603

UH Electronic Engineer I, P12, #81581

UH Computer Specialist III, P07, #81654

UH Electronic Technician II, P09, #80034

UH Electronic Technician I, P06, #81277

Audio Visual Technician I, BC07, #47350 (.50)

UH Educational Specialist II (Media), P06, #80694

UH Graphic Artist II, P05, #81060

Offset Press Operator III, BC09, #39797

Offset Press Operator II, BC08, #47346 (.50)

Clerk-Steno III, SR 11, #21321

Clerk-Typist II, SR08, #42014 \*

STATE OF HAWAII  
UNIVERSITY OF HAWAII  
KAPIOLANI COMMUNITY COLLEGE  
INSTRUCTION

### Position Organization Chart

Chart III g

	Perm	Temp
General Fund	11.00	1.00

CHART UPDATED

DATE JUN 30 1996

\* Temporary position

\*\*Unit Head/Chairperson is appointed from among faculty positions within unit/department.

## Learning Assistance Center

### Unit Head/Chairperson\*\*

Faculty (4.50)

Full-time: #84072, #86758, #87120, #87144T\*

Part-time: #86757 (.50)

Clerk-Typist II, SR08, #14214

\*Temporary position

\*\*Unit Head/Chairperson is appointed from among faculty positions at the College.

STATE OF HAWAII  
UNIVERSITY OF HAWAII  
KAPIOLANI COMMUNITY COLLEGE  
INSTRUCTION

### Position Organization Chart

Chart III h

	Perm	Temp
General Fund	4.50	1.00

CHART UPDATED

DATE JUN 30 1996

## Computing Center

UH Computer Specialist V, P11, #81384

UH Computer Specialist IV, P09, #80529, #81069

UH Computer Specialist III, P07, #80340

UH Educational Specialist II, P06, #80351, #81220T\*

\* Temporary position

STATE OF HAWAII  
UNIVERSITY OF HAWAII  
KAPIOLANI COMMUNITY COLLEGE  
INSTRUCTION

Position Organization Chart

Chart III i

	Perm	Temp
General Fund	5.00	1.00

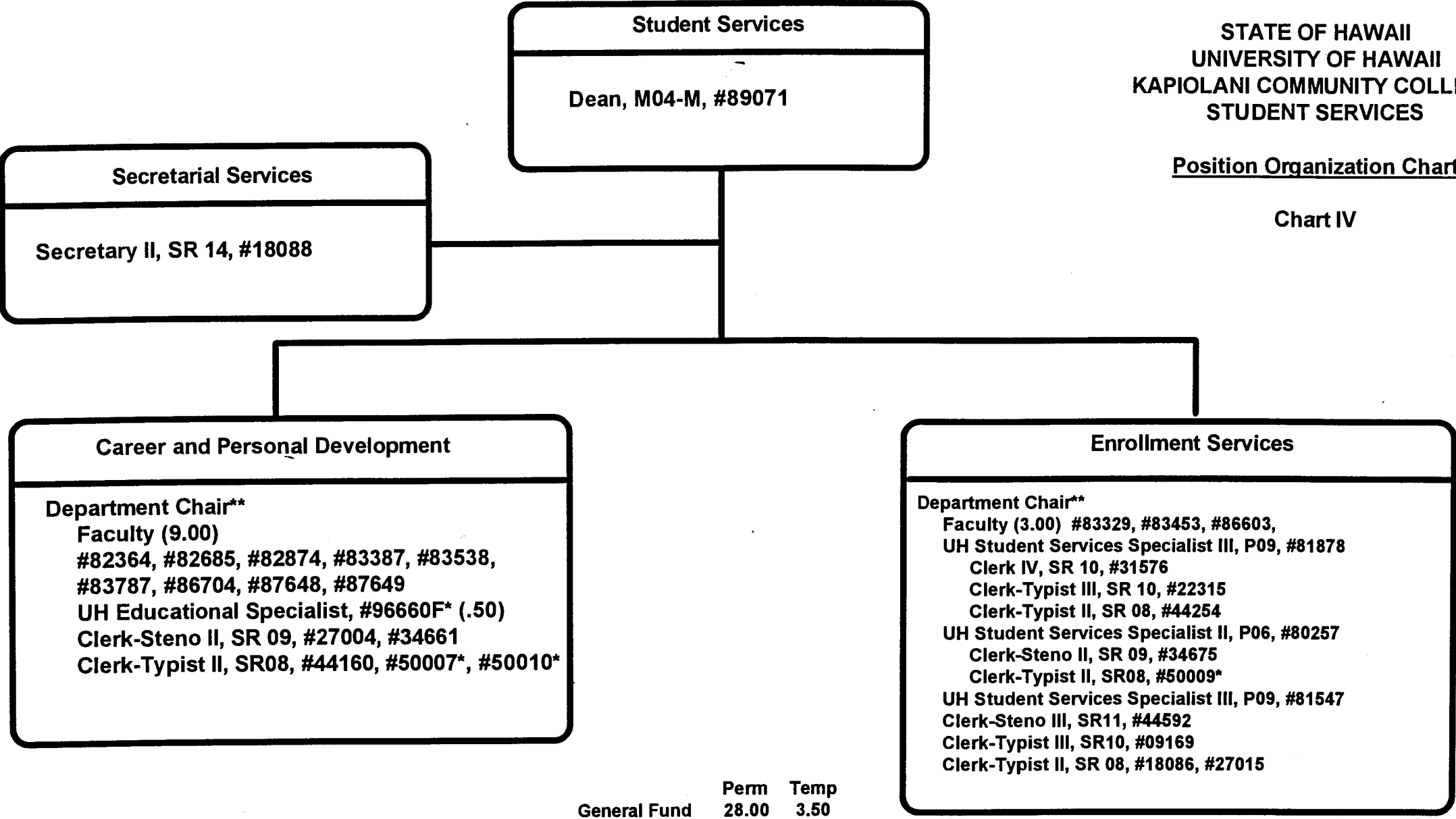
CHART UPDATED

DATE JUN 30 1996

STATE OF HAWAII  
UNIVERSITY OF HAWAII  
KAPIOLANI COMMUNITY COLLEGE  
STUDENT SERVICES

Position Organization Chart

Chart IV



\*Temporary position

\*\*Department Chair appointed from faculty positions within department.

CHART UPDATED

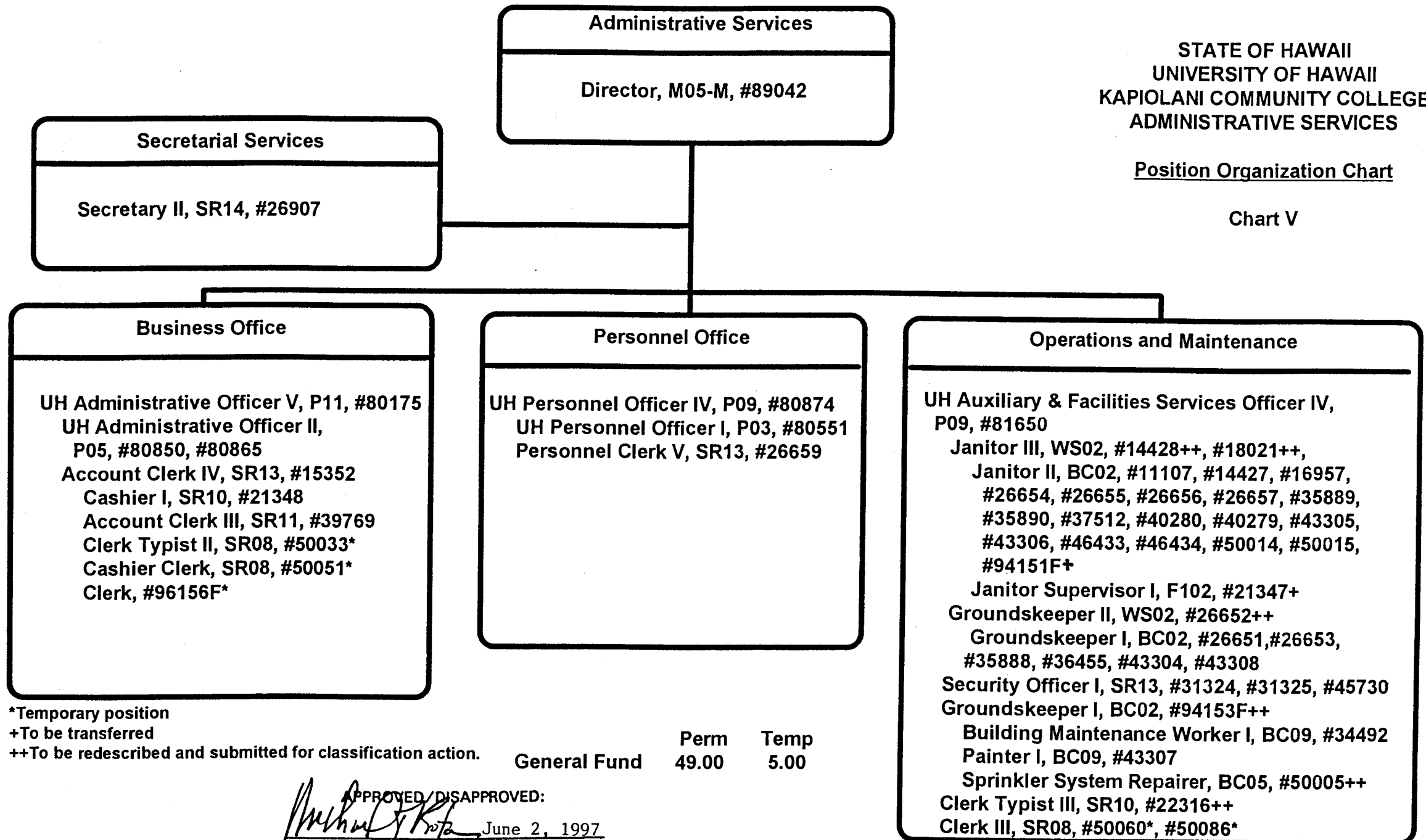
JUN 30 1996

DATE

STATE OF HAWAII  
UNIVERSITY OF HAWAII  
KAPIOLANI COMMUNITY COLLEGE  
ADMINISTRATIVE SERVICES

Position Organization Chart

Chart V



\*Temporary position

+To be transferred

++To be redescribed and submitted for classification action.

General Fund

Perm

49.00

Temp

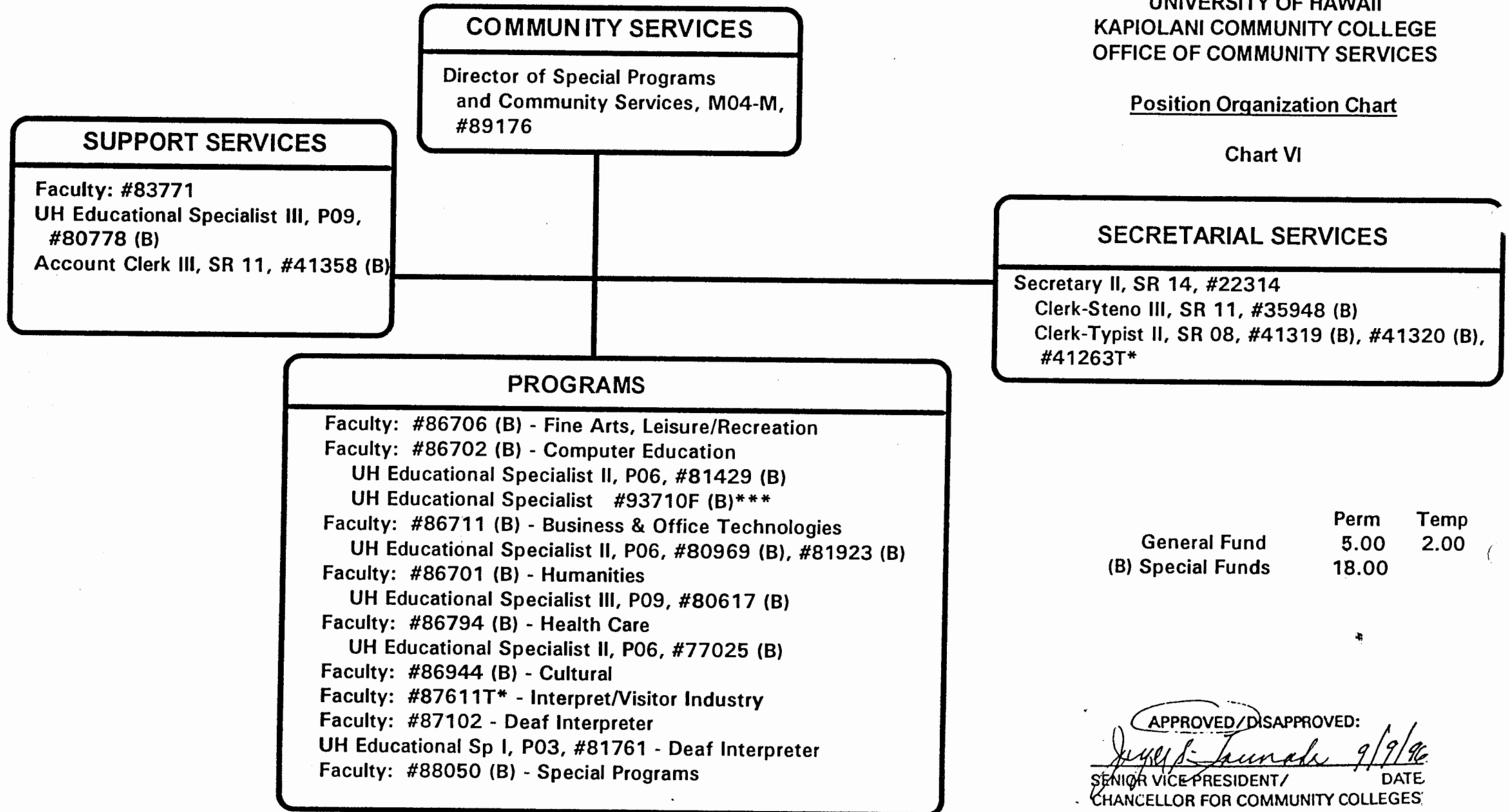
5.00

APPROVED/DISAPPROVED:  
*Michael J. K...*  
June 2, 1997  
SENIOR VICE PRESIDENT/ CHANCELLOR FOR COMMUNITY COLLEGES

STATE OF HAWAII  
UNIVERSITY OF HAWAII  
KAPIOLANI COMMUNITY COLLEGE  
OFFICE OF COMMUNITY SERVICES

Position Organization Chart

Chart VI



	Perm	Temp
General Fund	5.00	2.00
(B) Special Funds	18.00	

APPROVED/DISAPPROVED:

*Jay L. Lunn* 9/9/96  
\_\_\_\_\_  
SENIOR VICE PRESIDENT/ DATE  
CHANCELLOR FOR COMMUNITY COLLEGES

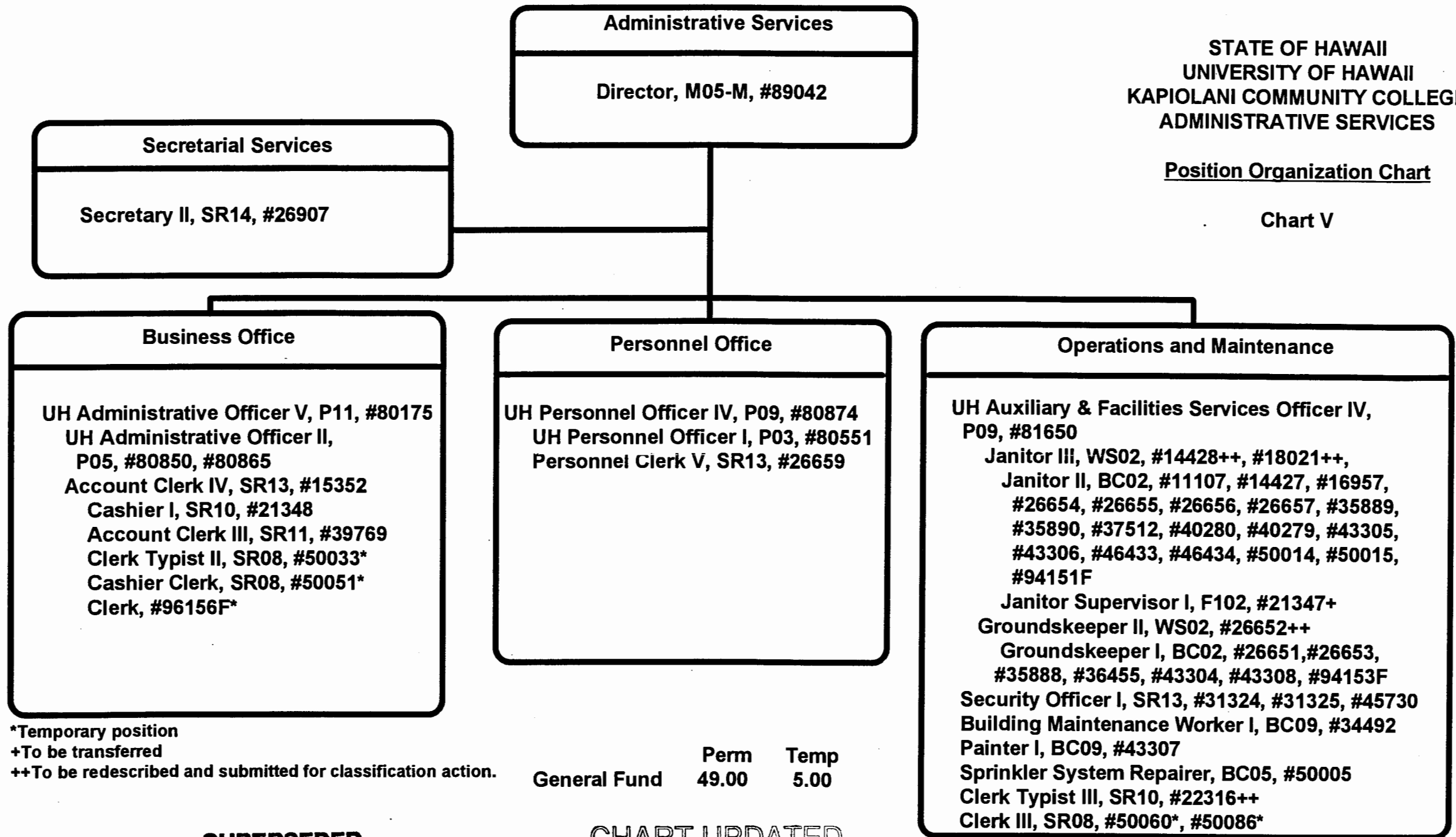
\*Temporary position

\*\*\*Position to be established

STATE OF HAWAII  
UNIVERSITY OF HAWAII  
KAPIOLANI COMMUNITY COLLEGE  
ADMINISTRATIVE SERVICES

Position Organization Chart

Chart V



\*Temporary position

+To be transferred

++To be redescribed and submitted for classification action.

	Perm	Temp
General Fund	49.00	5.00

**SUPERSEDED**

Date JUN 2 1997

**CHART UPDATED**

DATE JUN 30 1996

## Health Education Division/Department

### Health Sciences

#### Chairperson\*\*

Secretary II, SR14, #32952

Clerk-Steno II, SR09, #40964 (.50)

#### Faculty (14.10)

Full-time: #82121, #82162, #82405, #84326, #82576, #83310,  
#83321, #83667, #84223, #85821, #86385, #86384,  
#86882, #86886

Part-time: #87052 (.10)

### Nursing

#### Chairperson\*\*

Secretary II, SR14, #18093

Clerk-Typist II, SR08, #42015

#### Faculty (32.50)

Full-time: #82064, #82513, #84487, #84629, #84655, #86737,  
#86738, #86740, #86741, #86742, #86743, #86746,  
#86747, #86749, #86750, #86751, #86752, #86774,  
#86776, #86777, #86778, #86832, #86833, #86834,  
#86836, #86837, #86838, #86839, #86840

Part-time: #82244 (.50), #84308 (.50), #86581 (.50), #86736 (.50),  
#86739 (.50), #88072 (.50), #88074 (.50)

\*\*Chairperson is appointed from among faculty positions within department.

## STATE OF HAWAII UNIVERSITY OF HAWAII KAPIOLANI COMMUNITY COLLEGE INSTRUCTION

### Position Organization Chart

Chart III e

General Fund      Perm  
50.10

**SUPERSEDED**  
Date FEB 3 1997

APPROVED/DISAPPROVED:  
*Jay S. Lunn* 9/9/96  
\_\_\_\_\_  
SENIOR VICE PRESIDENT/ CHANCELLOR FOR COMMUNITY COLLEGES  
DATE

- Applies and administers the University's and College's rules concerning faculty, curricula and budget.
- Coordinates the development of the College curriculum, program planning, and academic support services.

#### General Instruction Support

This office is responsible for certain defined areas as follows:

- Federal grants.
- Summer session.
- Class schedules.

#### Division of General Education, Business Education, Food Service Education, Office Administration and Technology, Paralegal, and Health Education

The instructional division is responsible for the development, supervision and improvement of instruction and curricula of selected academic departments and/or programs of the College. It provides instruction in the following principal areas:

- General education (transfer) programs in social sciences, language arts, mathematics and science, and the humanities.
- Business education programs in accounting, business administration and data processing.
- Food service and hospitality education programs.
- Programs in secretarial science and legal para-professional work (paralegal).

Health education programs in dental assisting, dietetic technician, medical assisting, medical lab technician, nurse's aides, occupational therapy assisting, practical nursing, radiologic technology, and respiratory therapy.

**SUPERSEDED**  
**Date SEP - 9 1996**

#### Library Services

The Library is responsible for providing information services to students and faculty on an individual basis as part of their independent study and research in support of classroom learning activities.

Using recognized methods of professional librarianship, the Library staff provides information covering the total diversity of the College's curricula and the wide range of student activities and faculty expertise. The main activity of the library staff is to mediate a carefully developed collection of information sources to library users according to their individual information needs. To accomplish this activity successfully, the Library is organized into four functional areas to perform the following:

#### Technical Services

- Orders and purchases new library materials.
- Catalogs and classifies all new materials added to the collection.

## General Education Division/Department

### Social Science

#### Chairperson\*\*

#### Faculty (12.00)

Full-time: #82152, #82706, #82935, #83492, #83560, #83642, #83745, #84972, #84973, #86599, #86938, #87403

### Language Arts

#### Chairperson\*\*

#### Faculty (27.00)

Full-time: #82178, #82232, #82555, #82776, #83123, #83308, #83447, #83559, #83783, #83795, #83870, #83903, #84327, #84409, #86594, #86595, #86596, #86604, #86798, #86803, #86960, #86945, #87084T\*, #87143T\*, #87583T\*, #87612T\*

Part-time: #86799 (.50), #82540 (.50)

### Mathematics/Science

#### Chairperson\*\*

#### Faculty (25.00)

Full-time: #82031, #82394, #82492, #82910, #82981, #83096, #83262, #83357, #83688, #83733, #83939, #83974, #84458, #86592, #86593, #86600, #86606, #86718, #86754, #86827, #86830, #86959, #87401, #86947T\*, #88032T\*

UH Educational Specialist I, P03, #81246

### Humanities

#### Chairperson\*\*

#### Faculty (19.00)

Full-time: #82052, #82231, #82607, #82631, #82925, #82983, #83094, #83809, #84470, #84882, #84971, #84974, #86602, #86937, #87402, #87404, #86696T\*, #87072T\*, #87074T\*

### General Education, Clerical Staff\*\*\*\*

Secretary II, SR 14, #22313

Clerk-Typist II, SR08, #26658, #22310

Clerk-Typist II, SR08, #47900 (.50)

## STATE OF HAWAII UNIVERSITY OF HAWAII KAPIOLANI COMMUNITY COLLEGE INSTRUCTION

### Position Organization Chart

Chart III a

**SUPERSEDED**  
Date SEP - 9 1996

	Perm	Temp
General Fund	78.50	9.00

CHART UPDATED  
DATE JUN 30 1996

\* Temporary position

\*\*Chairperson is appointed from among faculty positions within department.

\*\*\*\*Secretarial and Clerical staff serve all four General Education Departments—Social Science, Language Arts, Mathematics/Science, and Humanities.

## Business Education Division/Department

### Chairperson\*\*

Secretary II, SR 14, #22312

Clerk-Typist II, SR 08, #47612 (.50)

### Faculty

Accounting/Data Processing (11.00)

Full-time: #82026, #82066, #82503, #82728, #82795, #82931,  
#83221, #84337, #86591, #86598, #87123

Business Administration (5.00)

Full-time: #82218, #82389, #82429, #84150, #84369

\*\*Chairperson is appointed from among faculty positions within department.

STATE OF HAWAII  
UNIVERSITY OF HAWAII  
KAPIOLANI COMMUNITY COLLEGE  
INSTRUCTION

### Position Organization Chart

Chart III b

**SUPERSEDED**  
Date SEP - 9 1996

General Fund      Perm  
17.50

**CHART UPDATED**  
DATE JUN 30 1996

**Office Administration and Technology  
and Paralegal Division/Department**

**Office Administration and Technology Programs**

**Chairperson\*\***

**Faculty (7.00)**

**Full-time: #82348, #82380, #82876, #83071, #83734, #83771,  
#84223**

**Paralegal Program**

**Chairperson\*\***

**Faculty (1.50)**

**Full-time: #83360**

**Part-time: #84370 (.50)**

**Office Administration and Technology/Paralegal Education,  
Clerical Staff**

**Secretary II, SR 14, #18092**

**\*\*Chairperson is appointed from among instructional positions within department.**

**STATE OF HAWAII  
UNIVERSITY OF HAWAII  
KAPIOLANI COMMUNITY COLLEGE  
INSTRUCTION**

**Position Organization Chart**

**Chart III d**

**SUPERSEDED**

**Date SEP - 9 1996**

	<b>Perm</b>
<b>General Fund</b>	<b>9.50</b>

**CHART UPDATED**

**DATE JUN 30 1996**

## Health Education Division/Department

### Health Sciences

#### Chairperson\*\*

Secretary II, SR14, #32952

Clerk-Steno II, SR09, #40964 (.50)

#### Faculty (13.10)

Full-time: #82121, #82162, #82405, #84326, #82576, #83310,  
#83321, #83667, #85821, #86385, #86384, #86882,  
#86886

Part-time: #87052 (.10)

### Nursing

#### Chairperson\*\*

Secretary II, SR14, #18093

Clerk-Typist II, SR08, #42015

#### Faculty (32.50)

Full-time: #82064, #82513, #84487, #84629, #84655, #86737,  
#86738, #86740, #86741, #86742, #86743, #86746,  
#86747, #86749, #86750, #86751, #86752, #86774,  
#86776, #86777, #86778, #86832, #86833, #86834,  
#86836, #86837, #86838, #86839, #86840

Part-time: #82244 (.50), #84308 (.50), #86581 (.50), #86736 (.50),  
#86739 (.50), #88072 (.50), #88074 (.50)

\*\*Chairperson is appointed from among faculty positions within department.

STATE OF HAWAII  
UNIVERSITY OF HAWAII  
KAPIOLANI COMMUNITY COLLEGE  
INSTRUCTION

### Position Organization Chart

Chart III e

**SUPERSEDED**

Date SEP - 9 1996

	Perm
General Fund	49.10

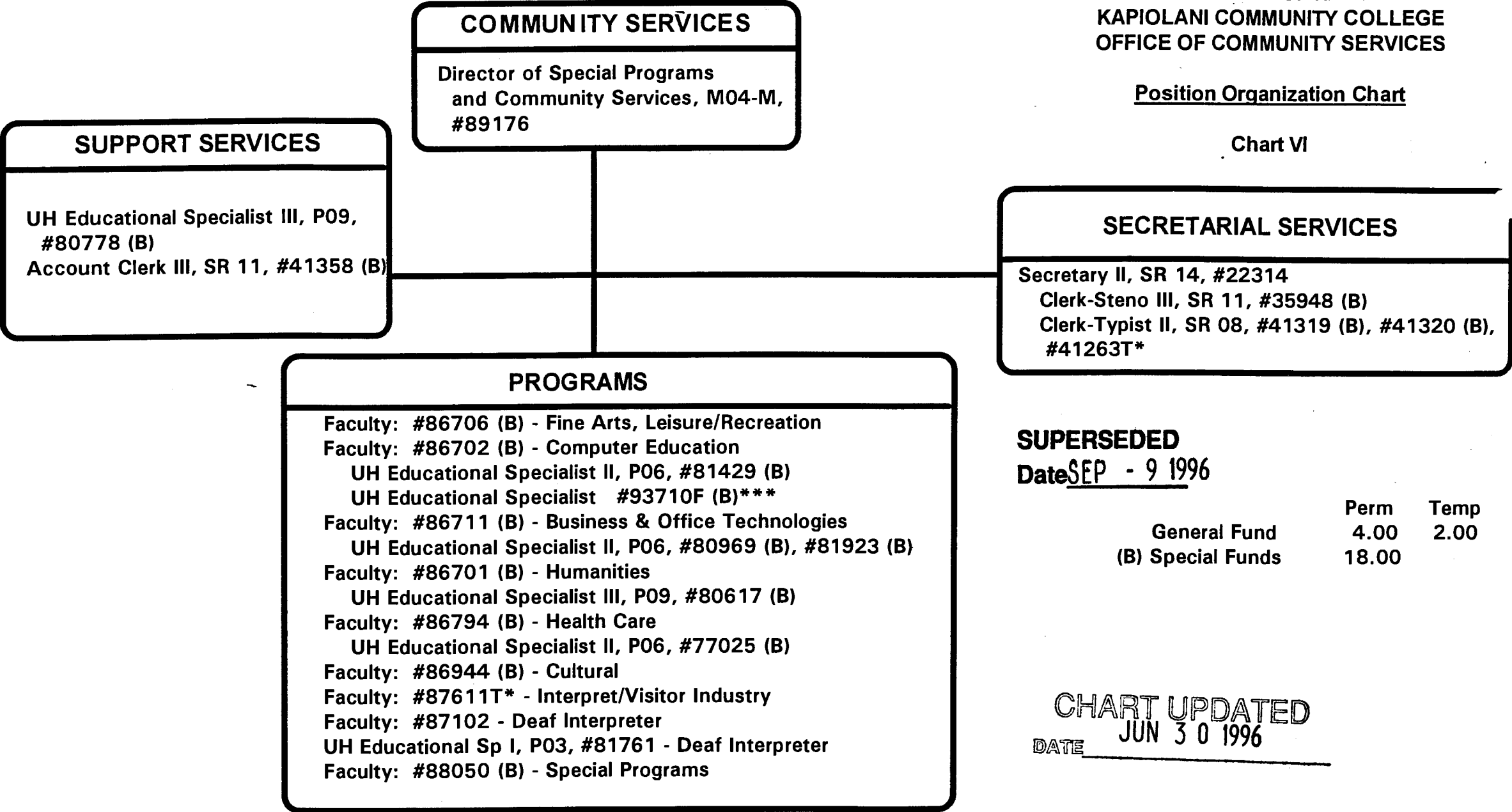
**CHART UPDATED**

DATE JUN 30 1996

STATE OF HAWAII  
UNIVERSITY OF HAWAII  
KAPIOLANI COMMUNITY COLLEGE  
OFFICE OF COMMUNITY SERVICES

Position Organization Chart

Chart VI



**SUPERSEDED**

Date SEP - 9 1996

	Perm	Temp
General Fund	4.00	2.00
(B) Special Funds	18.00	

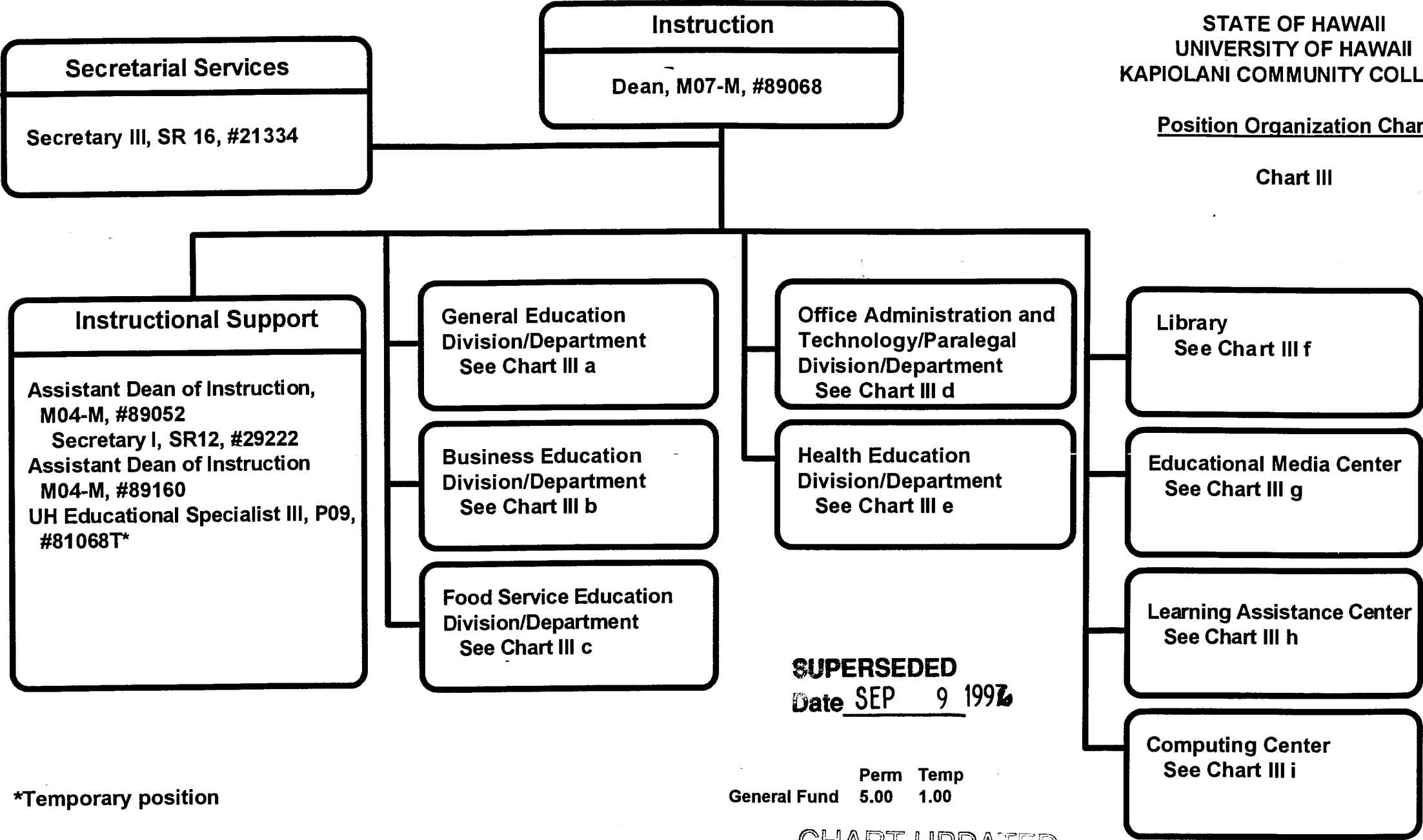
CHART UPDATED  
JUN 30 1996  
DATE \_\_\_\_\_

\*Temporary position  
\*\*\*Position to be established

STATE OF HAWAII  
UNIVERSITY OF HAWAII  
KAPIOLANI COMMUNITY COLLEGE

Position Organization Chart

Chart III



**SUPERSEDED**  
Date SEP 9 1996

	Perm	Temp
General Fund	5.00	1.00

CHART UPDATED  
DATE JUN 30 1996

\*Temporary position

## Health Education Division/Department

### Health Sciences

#### Chairperson\*\*

Secretary II, SR14, #32952

Clerk-Steno II, SR09, #40964 (.50)

#### Faculty (15.10)

Full-time: #82121, #82162, #82405, #84326, #82576, #83310,  
#83321, #83667, #84223, #85821, #86385, #86384,  
#86752, #86882, #86886

Part-time: #87052 (.10)

### Nursing

#### Chairperson\*\*

Secretary II, SR14, #18093

Clerk-Typist II, SR08, #42015

#### Faculty (31.50)

Full-time: #82064, #82513, #84487, #84629, #84655, #86737,  
#86738, #86740, #86741, #86742, #86743, #86746,  
#86747, #86749, #86750, #86751, #86774,  
#86776, #86777, #86778, #86832, #86833, #86834,  
#86836, #86837, #86838, #86839, #86840

Part-time: #82244 (.50), #84308 (.50), #86581 (.50), #86736 (.50),  
#86739 (.50), #88072 (.50), #88074 (.50)

\*\*Chairperson is appointed from among faculty positions within department.

STATE OF HAWAII  
UNIVERSITY OF HAWAII  
KAPIOLANI COMMUNITY COLLEGE  
INSTRUCTION

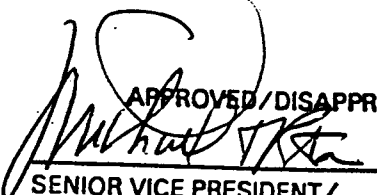
### Position Organization Chart

Chart III e

General Fund      Perm  
50.10

**SUPERSEDED**

Date MAR 21 1997

APPROVED/DISAPPROVED:  
  
\_\_\_\_\_  
SENIOR VICE PRESIDENT/  
CHANCELLOR FOR COMMUNITY COLLEGES  
DATE 2/3/97