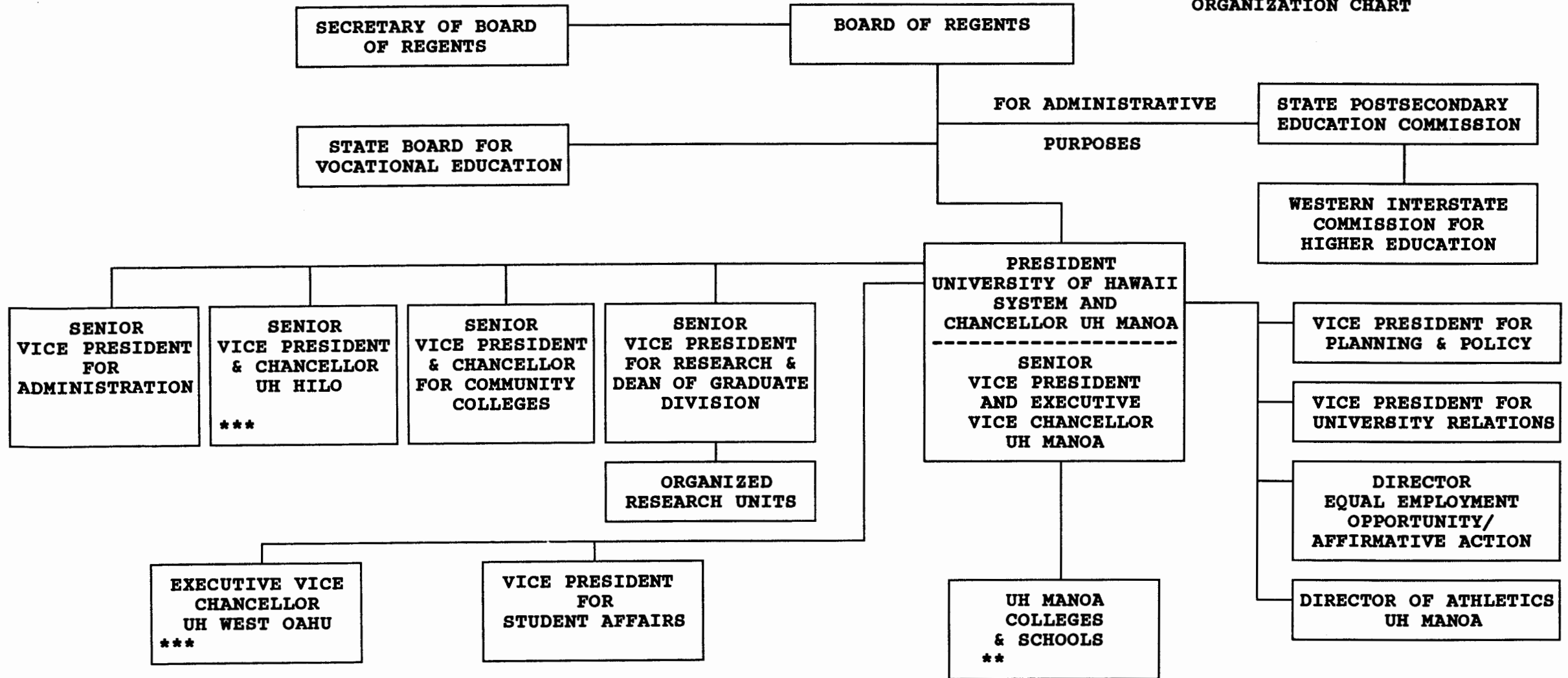


STATE OF HAWAII
UNIVERSITY OF HAWAII ADMINISTRATION
ORGANIZATION CHART

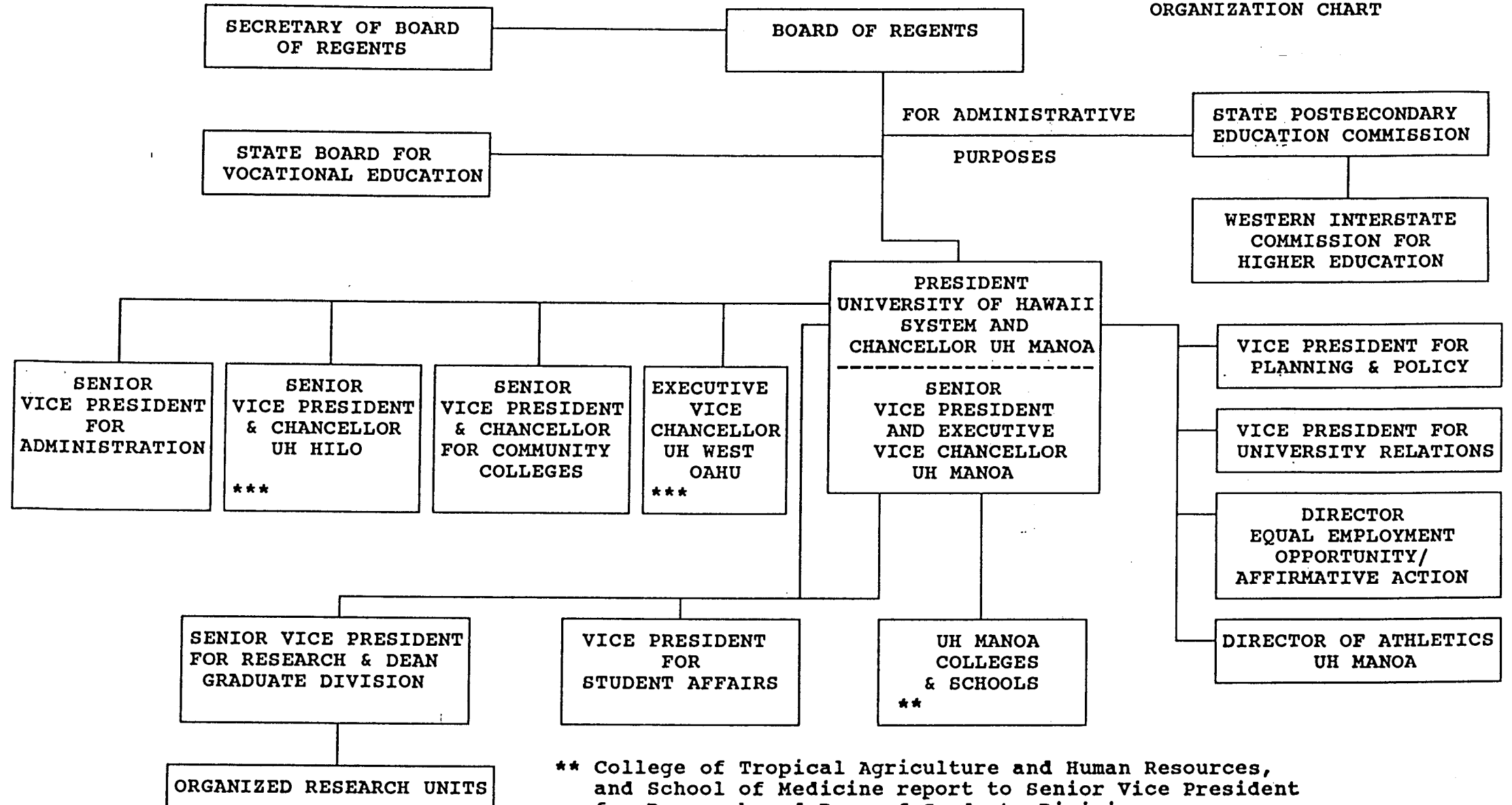


** College of Tropical Agriculture and Human Resources,
and School of Medicine report to Senior Vice President
for Research and Dean of the Graduate Division

*** Position to be redescribed

JUNE 30, 1997

STATE OF HAWAII
UNIVERSITY OF HAWAII ADMINISTRATION
ORGANIZATION CHART



** College of Tropical Agriculture and Human Resources,
and School of Medicine report to Senior Vice President
for Research and Dean of Graduate Division

*** Position to be redescribed

APPROVED BY THE UNIVERSITY
BOARD OF REGENTS
MAY 16 1997

Date

STATE OF HAWAII
UNIVERSITY OF HAWAII
STATE POSTSECONDARY EDUCATION COMMISSION
ORGANIZATION CHART

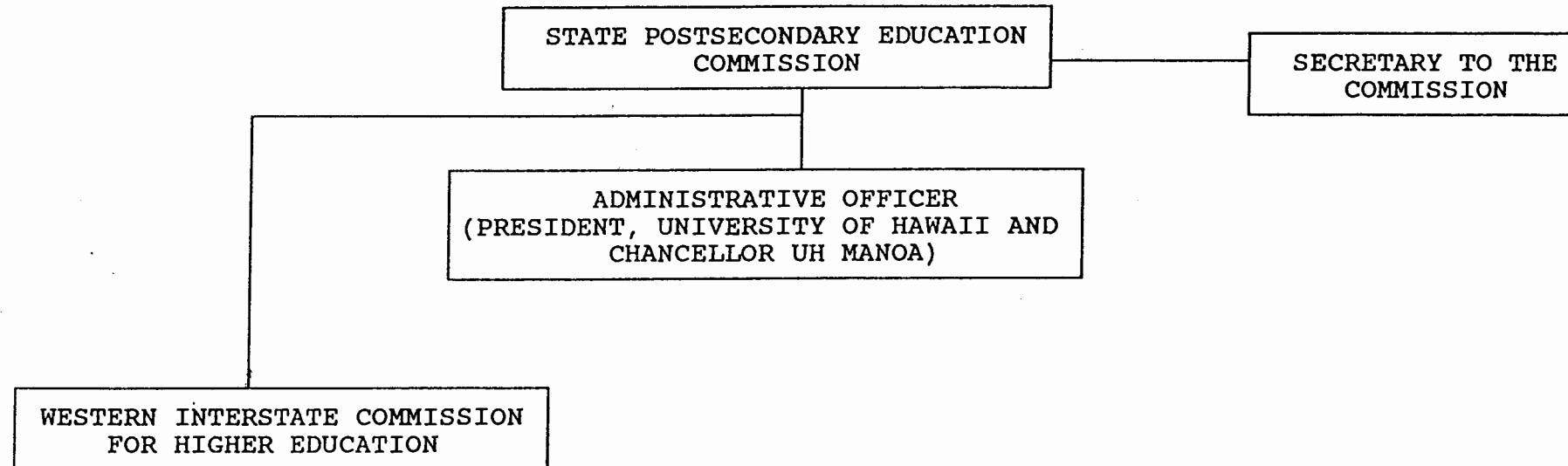


CHART UPDATED
DATE JUN 30 1996

STATE OF HAWAII
UNIVERSITY OF HAWAII
STATEWIDE ADMINISTRATION
SECRETARY OF BOARD OF REGENTS
POSITION ORGANIZATION CHART

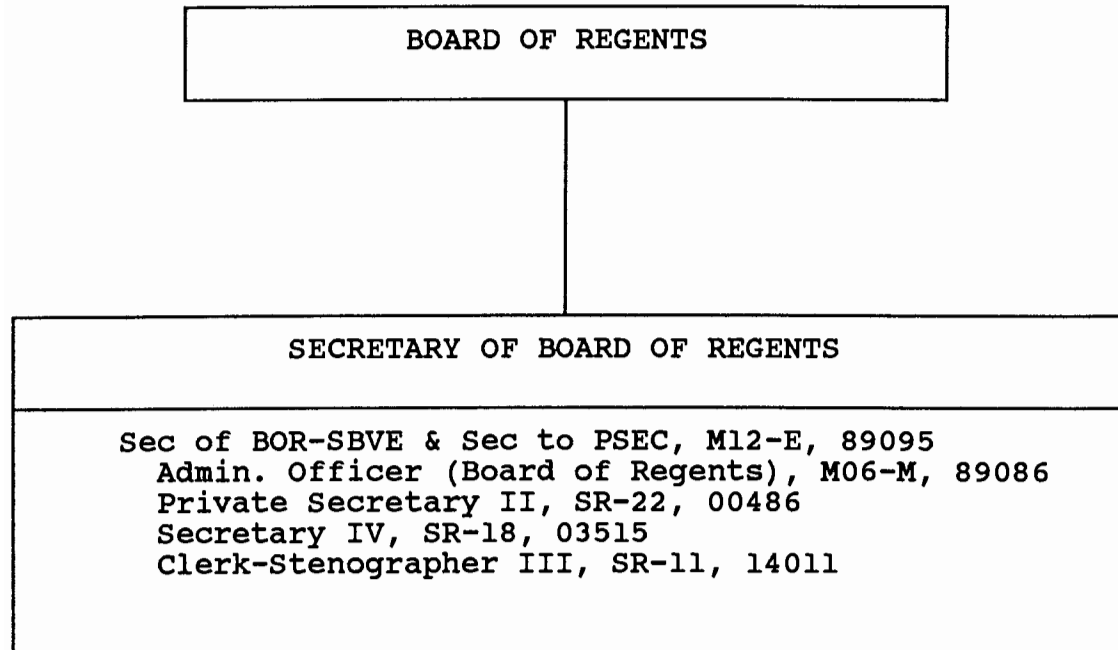


CHART UPDATED
JUN 30 1996
DATE _____

STATE OF HAWAII
UNIVERSITY OF HAWAII ADMINISTRATION
OFFICE OF THE PRESIDENT, UH SYSTEM
AND CHANCELLOR, UH MĀNOA
POSITION ORGANIZATION CHART A

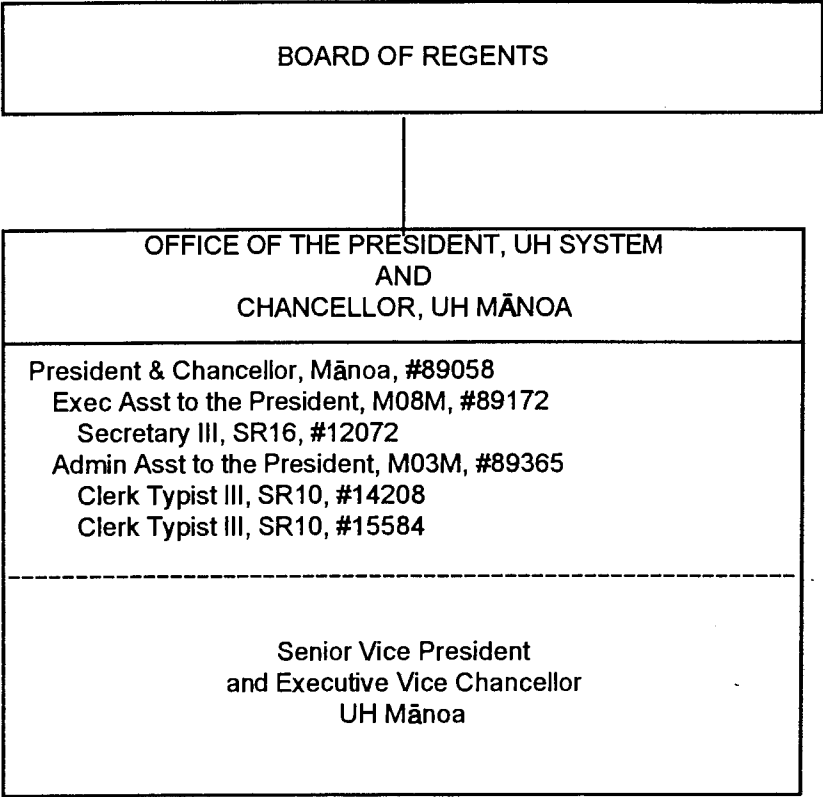
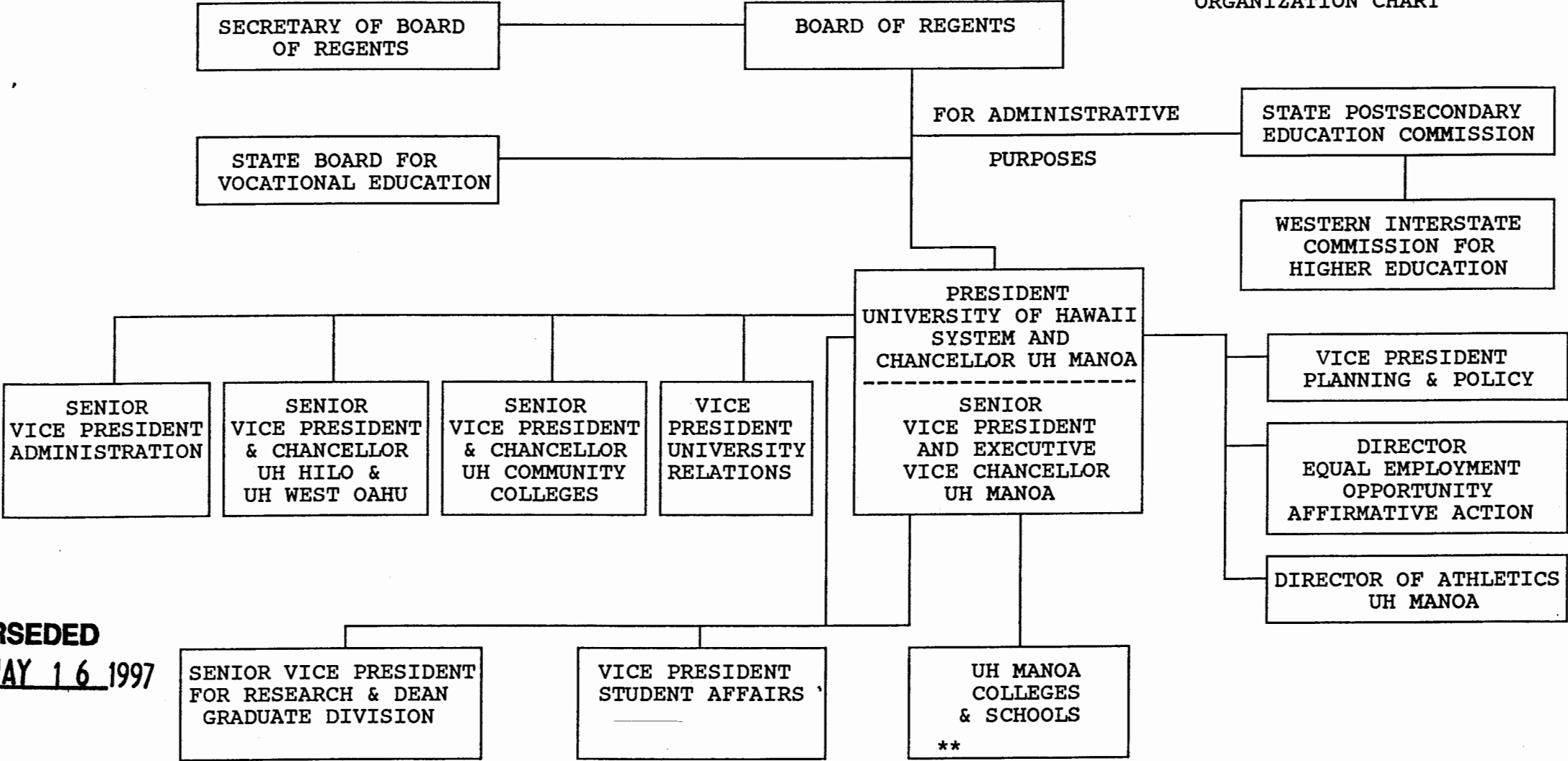


CHART UPDATED

DATE JUN 30 1996

STATE OF HAWAII
UNIVERSITY OF HAWAII ADMINISTRATION
ORGANIZATION CHART



SUPERSEDED
Date MAY 16 1997

CHART UPDATED
DATE JUL - 1 1996

** College of Tropical Agriculture and Human Resources, and School of Medicine report to Senior Vice President for Research and Dean Graduate Division

STATE OF HAWAII
UNIVERSITY OF HAWAII
OFFICE OF EQUAL EMPLOYMENT OPPORTUNITY/
AFFIRMATIVE ACTION
POSITION ORGANIZATION CHART
Chart AA

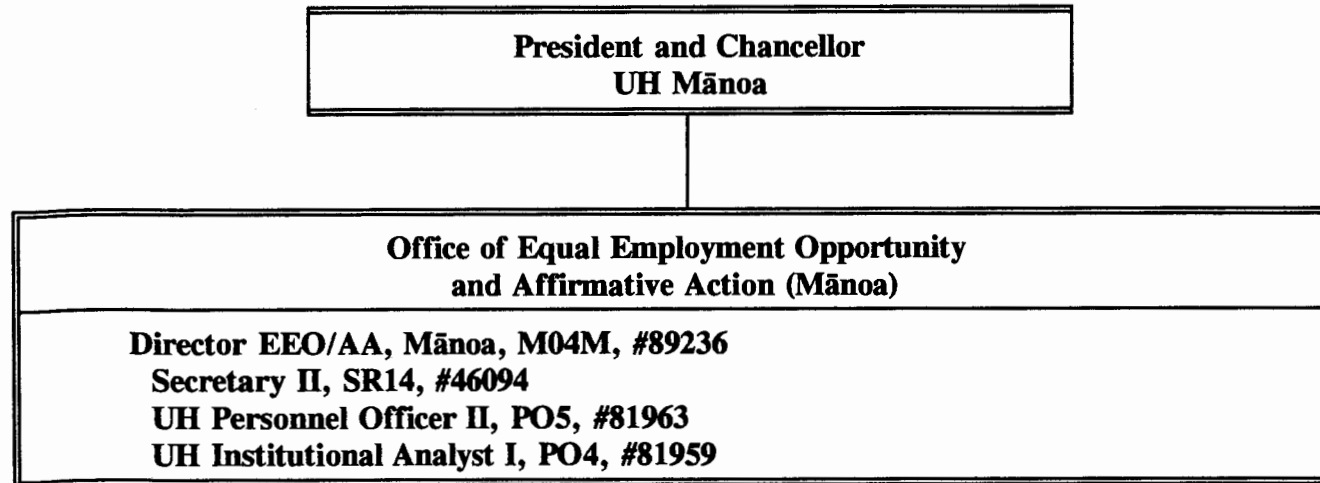


CHART UPDATED
DATE JUN 30 1996