

OFFICE OF THE VICE PRESIDENT FOR STUDENT AFFAIRS
Chart IV-A

State of Hawai'i
University of Hawai'i
University of Hawai'i at Mānoa

Office:
UHM Student Services

Chart: IV
[CURRENT]

OFFICE OF ADMINISTRATIVE SERVICES
Chart IV-A

**OFFICE OF THE DIRECTOR OF STUDENT
EQUITY, EXCELLENCE AND DIVERSITY**
Chart IV-A

Center for Adults
Returning to Education
Chart IV-O

Hawai'i Opportunity
Program in Education
Chart IV-P

Operation Kua'ana
Chart IV-Q

Women's Center
Chart IV-M

College Opportunities
Program
Chart IV-L

KOKUA Program
Chart IV-S

Operation Manong
Chart IV-R

**OFFICE OF THE DEAN OF STUDENTS
AND STUDENT SERVICES (UHM)**
Chart IV-A

Co-curricular Activities,
Programs and Services
Chart IV-D

Counseling and
Student Development
Center
Chart IV-J

International
Student Services
Chart IV-H

Student Employment and
Cooperative Education
Chart IV-G

Student Housing
Services
Chart IV-E

Career Services
Chart IV-I

Children's Center
Chart IV-N

School and College
Services
Chart IV-F

Student Health
Services
Chart IV-K

**OFFICE OF THE DIRECTOR OF UNIVERSITYWIDE
STUDENT AFFAIRS/ASSISTANT TO THE VP**
Chart IV-A

Admissions and
Records
Chart IV-B

Financial Aid Services
Chart IV-C

CHART UPDATED
DATE JUN 30 1996

Office:
UHM Student Services

Chart: IV-A
[CURRENT]

OFFICE OF THE VICE PRESIDENT FOR STUDENT AFFAIRS

Vice President for Student Affairs, M13, #89103

ADMINISTRATIVE SUPPORT

Private Secretary II, SR22, #37046
University Academic Affairs Program Officer,
M4, #89325

OFFICE OF ADMINISTRATIVE SERVICES

UH Administrative Officer VI, P13, #80146

FISCAL SERVICES

Account Clerk III, SR11, #21426

PERSONNEL SERVICES

UH Personnel Officer II, P05, #81879
Personnel Clerk IV, SR11, #44556

CHART UPDATED
DATE JUN 30 1996

OFFICE OF THE DIRECTOR OF STUDENT EQUITY, EXCELLENCE AND DIVERSITY

Director of Minority Students, M6, #89298
UH Administrative Officer III, P07, #81088

OFFICE OF THE DEAN OF STUDENTS AND STUDENT SERVICES (UHM)

Dean of Student Services (UHM), M9, #89133
Secretary III, SR16, #00745
Assistant Specialist, S3, #82635
Junior Specialist, S2, #84173

OFFICE OF THE DIRECTOR OF UNIVERSITYWIDE STUDENT AFFAIRS/ASSISTANT TO THE VP

Special Assistant to the Vice President, M6, #89309
Secretary II, SR14, #44996
UH Institutional Analyst III, P10, #81734
UH Educational Specialist III, P09, #81210

UHM 902

Office:
**UHM Student Services
Admissions and Records**

Chart: IV-B
[CURRENT]

**OFFICE OF THE DIRECTOR OF UNIVERSITYWIDE
STUDENT AFFAIRS/ASSISTANT TO THE VP**

ADMISSIONS AND RECORDS

Specialist, S5, #82701

ADMINISTRATIVE SUPPORT

Secretary II, SR 14, #14866
Specialist, S5, #83776
UH Student Services Specialist IV, P12, #81154 (.3)
Secretary II, SR 14, #00751

ADMISSIONS AND RESIDENCY

UH Student Services Specialist IV, P12, #81154 (.7)
Clerk Supervisor III, SR14, #00748
Clerk IV, SR10, #00772, #12550, #12842, #12843
#13495, #13496, #18009, #21427
UH Student Services Specialist III, P09, #80626
UH Student Services Specialist III, P09, #81414
UH Student Services Specialist III, P09, #80625
Clerk IV, SR10, #11496
Clerk IV, SR10, #26538
UH Student Services Specialist I, P03, #80530

RECORDS AND REGISTRATION

UH Student Services Specialist IV, P12, #81614
UH Student Services Specialist III, P09, #80658
Clerk Supervisor III, SR14, #17447
Clerk IV, SR10, #00750, #13959, #14863, #14864
#14865, #15502, #17450, #18010
#21430
Clerk III, SR8, #13494 (R)
Clerk III, SR8, #26539 (R)
Clerk Typist II, SR8, #40006
Scheduler, SR20, #05837

INFORMATION AND COMPUTER SERVICES

UH Student Services Specialist IV, P12, #81070
UH Computer Specialist III, P07, #80017
UH Student Services Specialist I, P03, #81071
Clerk Supervisor II, SR12, #22322
Clerk IV, SR10, #40004
Clerk IV, SR10, #40005
Clerk-Stenographer II, SR9, #22321
Clerk III, SR8, #15501
Clerk III, SR8, #40003
UH Computer Specialist I, P03, #80018

CHART UPDATED
JUN 30 1996
DATE _____

**OFFICE OF THE DIRECTOR OF UNIVERSITYWIDE
STUDENT AFFAIRS/ASSISTANT TO THE VP**

State of Hawai'i
University of Hawai'i
University of Hawai'i at Mānoa

Office:

**UHM Student Services
Financial Aid Services**

Chart: **IV-C**

[CURRENT]

FINANCIAL AID SERVICES

Director of Financial Aid, M4, #89184

ADMINISTRATIVE SUPPORT

Secretary II, SR14, #05737

PROGRAM SPECIALISTS

UH Student Services Specialist III, P09, #81913
UH Student Services Specialist II, P06, #81608
UH Student Services Specialist II, P06, #81607
UH Student Services Specialist II, P06, #81606
UH Student Services Specialist II, P06, #81609
UH Student Services Specialist II, P06, #81151
UH Student Services Specialist II, P06, #80922

DATA AND CLERICAL SUPPORT SECTION

Clerical Supervisor III, SR14, #17599
Clerk-Typist III, SR10, #16967
Clerk-Typist III, SR10, #15265
Clerk-Typist III, SR10, #17600
Clerk-Typist III, SR10, #10929
Clerk III, SR8, #44397

CHART UPDATED
JUN 30 1996
DATE _____

**OFFICE OF THE DEAN OF STUDENTS AND STUDENT SERVICES
(UHM)**

CO-CURRICULAR ACTIVITIES, PROGRAMS & SERVICES

Director of Bureau of Student Activities, M4, #89190

ADMINISTRATIVE AND FISCAL SUPPORT

UH Administrative Officer III, P07, #80163 (R)
UH Adm/Fiscal Support Specialist, P01, #80649 (R)
Account Clerk IV, SR13, #25700 (R)
Account Clerk II, SR08, #45362 (R)

CLERICAL SUPPORT

Secretary II, SR14, #13587
Clerk-Typist III, SR10, #28134 (R)
Clerk-Typist II, SR08, #25699 (R)
Clerk II, SR06, #25698 (R)

INTRAMURAL SPORTS

Specialist, S5, #83512
Specialist, S5, #85083
Junior Specialist, S2, #83788
Clerk-Typist II, SR08, #26460

**STUDENT LEADERSHIP DEVELOPMENT
& CO-CURRICULAR INTERVENTIONS
PROGRAMS**

Assistant Specialist, S3, #82864
Junior Specialist, S2, #83668
Junior Specialist, S2, #82573
Assistant Specialist, S3, #82597
UH Student Services Specialist II, P06, #81510(R)
UH Student Services Specialist II, P06, #81374(R)
UH Student Services Specialist II, P06, #80025(R)
UH Publication Specialist III, P07, #81186(R)
UH Adm/Fiscal Support Specialist, P01, #81137(R)
Junior Specialist, S2, #88334(R)
UH Publication Spec, #96504F,(R) (TBE)*
UH Publication Spec, #96505F,(R) (TBE)*
UH Publication Spec, #96506F,(R) (TBE)*

**OPERATIONAL PROGRAMS,
FACILITIES AND SERVICES**

UH Student Services Specialist III, P09, #80660(R)
Building Maintenance Worker I, WB09, #28597(R)
Janitor II, WB02, #25329(R), #25392(R), #44089(R)
Janitor, #96003F(R)(TBE)*, #96004F(R)(TBE)*
Bldg & Grnds Util Worker, #96001F(R)(TBE)*
Bldg & Grnds Util Worker, #96002F(R)(TBE)*
UH Student Services Specialist II, P06, #80631(R)
UH Student Services Specialist I, P03, #80942(R)
Junior Specialist, S2, #88765(R)

State of Hawai'i
University of Hawai'i
University of Hawai'i at Mānoa

Office:

**UHM Student Services
Co-Curricular Activities,
Programs and Services**

Chart: IV-D

[CURRENT]

*Pending Establishment

CHART UPDATED

DATE **JUN 30 1996**

OFFICE OF THE DEAN OF STUDENTS AND STUDENT SERVICES (UHM)

State of Hawai'i
University of Hawai'i
University of Hawai'i at Mānoa

Office:
**UHM Student Services
Student Housing Services**

Chart: IV-E
[CURRENT]

STUDENT HOUSING SERVICES

Director of Student Housing,
M6, #89007 (R)

UH Computer Spec II,
P05, #81361 (R)
UH Computer Spec,
#96508F (R)*

Secretary II,
SR14, #00743 (R)

ASSISTANT DIRECTOR

UH Student Svs Spec IV,
P12, #80630 (R)

PHYSICAL PLANT

UH Student Svs Spec II,
P06, #80629 (R)
Clerk-Typist II,
SR8, #13566 (R)
UH Registered Architect I,
P13, #77005 (a)(R)
UH Environmental Safety Spec,
P05, #81680 (a)(R)

**EDUCATIONAL
DEVELOPMENT**

UH Student Svs Spec II,
P06, #81611 (R)
Clerk-Steno II,
SR9, #31273 (R)

**FISCAL
PERSONNEL**

UH Adm Officer IV,
P09, #80193 (R)
UH Adm Officer II,
P05, #81103 (R)
Clerk-Steno III,
SR11, #18701 (R)
Account Clerk III,
SR11, #24026 (R)
Cashier I,
SR10, #28336 (R)

**CONFERENCE
ASSIGNMENTS
OFF-CAMPUS HSG**

UH Student Svs Spec II,
P06, #81612 (R)
Clerk-Typist IV,
SR12, #34981 (R)
Clerk-Typist II,
SR8, #18115 (R)
SR8, #15287 (R)
Clerk II,
SR6, #36106 (R)
Clerk Typist,
#96005F (R)*

CHART UPDATED

DATE **JUN 30 1996**

MAUKA/MAKAI

UH Student Hsg Coord II,
P07, #80598 (R)
UH Student Hsg Coord I,
P05, #80594 (R)
Clerk-Typist II,
SR8, #24249 (R), #23582 (R)
Bldg Maint Worker I,
BC9, #31245 (R), #13578 (R)
Groundskeeper II,
WS2, #31246 (R), #35375 (R)

HALE ALOHA

UH Student Hsg Coord II,
P07, #80597 (R)
Clerk-Steno II,
SR9, #24250 (R)
Bldg Maint Worker I,
BC9, #31242 (R)
Groundskeeper II,
WS2, #24251 (R)
UH Student Hsg Coord,
#96507F (R)*

HALE NOELANI

UH Student Hsg Coord I,
P05, #80924 (R)
Clerk-Typist II,
SR8, #28545 (R)
Bldg Maint Worker I,
BC9, #23493 (R)

HALE WAINANI

UH Student Hsg Coord I,
P05, #80595(R)
Clerk-Typist II,
SR8, #31244 (R)
Bldg Maint Worker I,
BC9, #31241 (R)
Groundskeeper II,
WS2, #31243 (R)

SECURITY

Univ Security Officer I,
SR14, #46108 (a)
SR14, #46109 (a)
SR14, #46110 (a)

(a) Student Housing Services position assigned to and supervised by Campus Operations
*Pending Establishment

**OFFICE OF THE DEAN OF STUDENTS
AND STUDENT SERVICES (UHM)**

SCHOOL AND COLLEGE SERVICES

Assistant Specialist, S3, #82771

ADMINISTRATIVE SUPPORT

Secretary II, SR14, #25830

Assistant Specialist, S3, #88147

Assistant Specialist, S3, #82637

UH Student Services Specialist II, P06, #81134

UH Student Services Specialist II, P06, #80463

State of Hawai'i
University of Hawai'i
University of Hawai'i at Mānoa

Office:

**UHM Student Services
School and College Services**

Chart: **IV-F**
[CURRENT]

CHART UPDATED

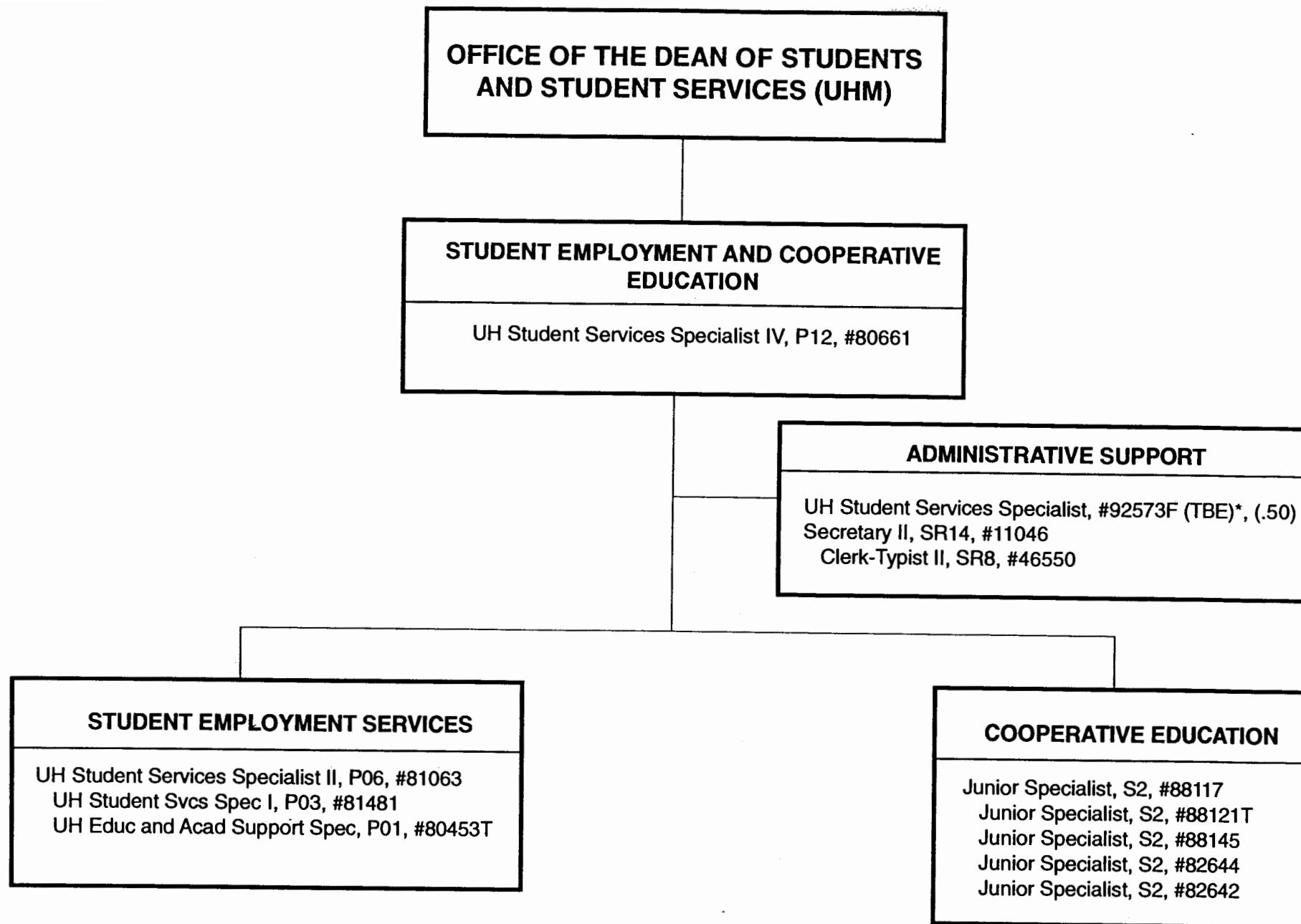
DATE JUN 30 1996

Office:

**UHM Student Services
Student Employment and
Cooperative Education**

Chart: IV-G

[CURRENT]



*Pending Establishment

CHART UPDATED
DATE JUN 30 1996

State of Hawai'i
University of Hawai'i
University of Hawai'i at Mānoa

Office:

**UHM Student Services
International Student
Services**

Chart: IV-H
[CURRENT]

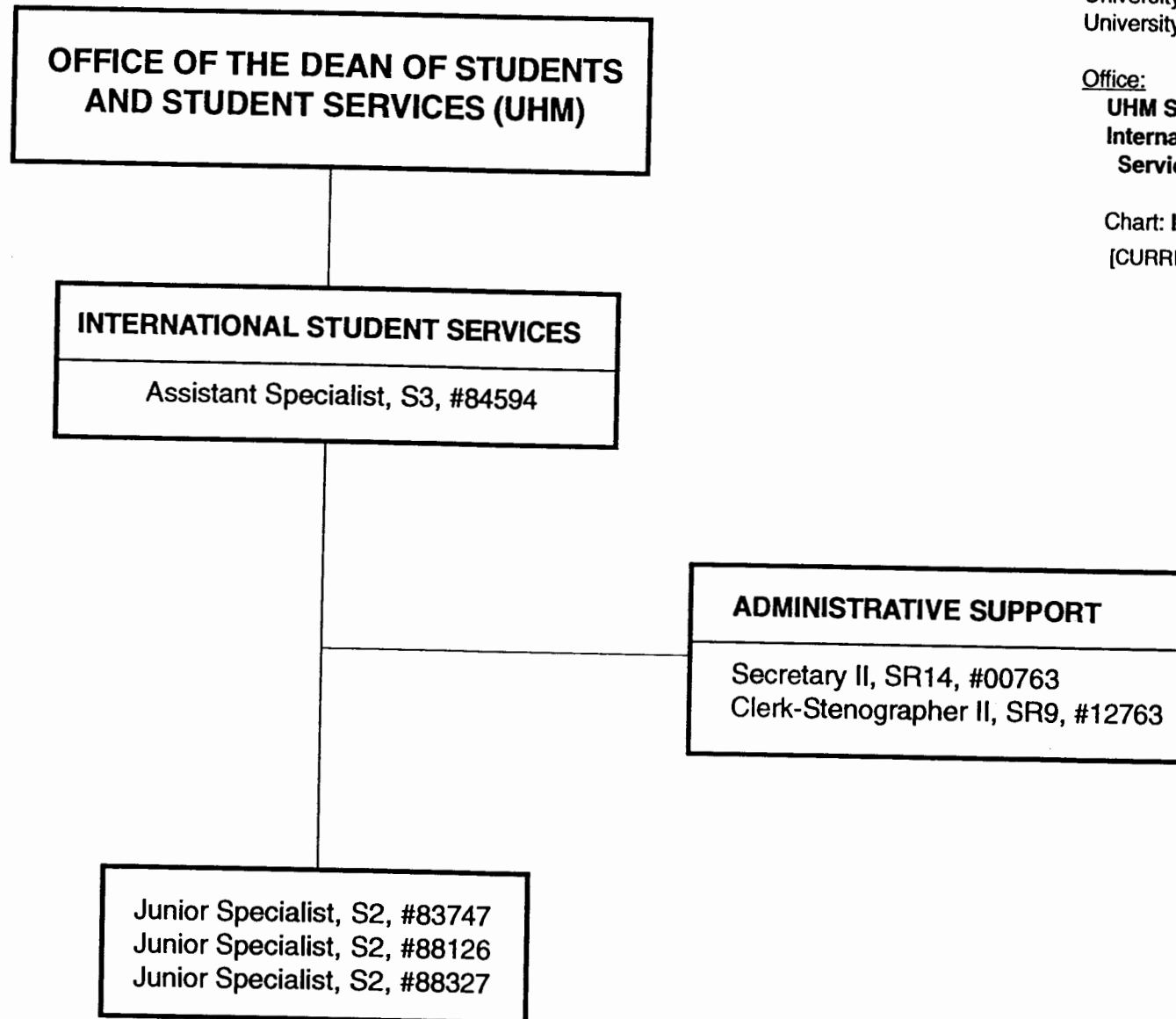


CHART UPDATED
DATE JUN 30 1996

**OFFICE OF THE DEAN OF STUDENTS
AND STUDENT SERVICES (UHM)**

CAREER SERVICES

Specialist, S5, #83382

ADMINISTRATIVE SUPPORT

Secretary II, SR14, #14337

Junior Specialist, S2, #88125

Junior Specialist, S2, #83548

Assistant Specialist, S3, #88325

Junior Specialist, S2, #88326

UH Student Services Specialist II, P06, #81434

State of Hawai'i
University of Hawai'i
University of Hawai'i at Mānoa

Office:
**UHM Student Services
Career Services**

Chart: IV-I

CHART UPDATED
DATE JUN 30 1996

Office:

**UHM Student Services
Counseling and Student
Development Center**

Chart: IV-J

[CURRENT]

**OFFICE OF THE DEAN OF STUDENTS
AND STUDENT SERVICES (UHM)**

**COUNSELING AND STUDENT
DEVELOPMENT CENTER**

Specialist, S5, #83151

ADMINISTRATIVE SUPPORT

Secretary II, SR14, #00746

CHART UPDATED

DATE JUN 30 1996'

LEARNING ASSISTANCE

Assistant Specialist, S3, #84554
Assistant Specialist, S3, #88143

TESTING

UH Student Services Specialist II, P06, #80632
Junior Specialist, S2, #84869 (.25) (s)

COUNSELING

Specialist, S5, #82048 (.50)
Specialist, S5, #83635 (.50)
Specialist, S5, #82695
Associate Specialist, S4, #82698
Assistant Specialist, S3, #83035
Assistant Specialist, S3, #83114
Associate Specialist, S4, #84139

Office:

**UHM Student Services
Student Health Services**

Chart: IV-K
[CURRENT]

**OFFICE OF THE DEAN OF STUDENTS
AND STUDENT SERVICES (UHM)**

STUDENT HEALTH SERVICES

Specialist, S5, #82341

ADMINISTRATIVE SUPPORT

Assistant Specialist, S3, #83539
Secretary II, SR14, #15353
Account Clerk III, SR11, #21512
Medical Records Technician VI, SR13, #03723
Clerk-Typist II, SR8, #35147 (.50)

MEDICAL STAFF

Specialist, S5, #84576 (.50)
Specialist, S5, #84576A (.50)
Specialist, S5, #83261 (.50)
Specialist, S5, #83397 (.50)
Specialist, S5, #84581 (.50)

NURSING STAFF

Registered Professional Nurse IV, SR22, #10312
Registered Professional Nurse III, SR20, #13616
Registered Professional Nurse III, SR20, #22672
Registered Professional Nurse III, SR20, #13615
Registered Professional Nurse III, SR20, #18091
Registered Professional Nurse III, SR20, #13614
Registered Professional Nurse III, SR20, #13730 (.50)

FAMILY PLANNING CLINIC

Registered Professional Nurse V,
SR24, #41706

LABORATORY

UH Medical Technician, P07, #80671 (.50)

CHART UPDATED
DATE JUN 30 1996

**OFFICE OF THE DIRECTOR OF STUDENT
EQUITY, EXCELLENCE AND DIVERSITY**

COLLEGE OPPORTUNITIES PROGRAM
UH Educational Specialist IV, P12, #80582

ADMINISTRATIVE SUPPORT
Secretary II, SR14, #23086

UH Student Services Specialist II, P06, #80628
UH Student Services Specialist II, P06, #81736 (.50)
UH Student Services Specialist I, P03, #80606

State of Hawai'i
University of Hawai'i
University of Hawai'i at Mānoa

Office:
**UHM Student Services
College Opportunities
Program**

Chart: IV-L
[CURRENT]

CHART UPDATED
JUN 30 1996

DATE _____

**OFFICE OF THE DIRECTOR OF STUDENT
EQUITY, EXCELLENCE AND DIVERSITY**

WOMEN'S CENTER

Junior Specialist, S2, #88123T, (.50)
Junior Specialist, S2, #88144T, (.50)
Clerk-Typist II, SR8, #44988T, (.50)

State of Hawai'i
University of Hawai'i
University of Hawai'i at Mānoa

Office:

**UHM Student Services
Women's Center**

Chart: **IV-M**
[CURRENT]

CHART UPDATED
JUN 30 1996
DATE _____

Authorized Temporary Positions

**OFFICE OF THE DEAN OF STUDENTS
AND STUDENT SERVICES (UHM)**

State of Hawai'i
University of Hawai'i
University of Hawai'i at Mānoa

Office:
**UHM Student Services
Children's Center**

Chart: IV-N
[CURRENT]

CHILDREN'S CENTER
Specialist, S5, #88318

ADMINISTRATIVE SUPPORT
UH Early Childhood Spec IV, P07, #80232

TEACHING STAFF
UH Educational Associate IV, P09, #80029
UH Educational Associate III, P07, #80109
UH Educational Associate III, P07, #80496T (.75)
UH Educational Associate I, P03, #80233
UH Educational Associate II, P05, #80234T
UH Educational Associate I, P03, #80424T
UH Early Childhood Spec III, P05, #80455T

CHART UPDATED
DATE **JUN 30 1996**

**OFFICE OF THE DIRECTOR OF STUDENT
EQUITY, EXCELLENCE AND DIVERSITY**

**CENTER FOR ADULTS
RETURNING TO EDUCATION**

Associate Specialist, S4, #88317
Junior Specialist, S2, #88762
Clerk Typist II, SR8, #43364 (.50)

State of Hawai'i
University of Hawai'i
University of Hawai'i at Mānoa

Office:

**UHM Student Services
Center for Adults
Returning to Education**

Chart: **IV-O**
[CURRENT]

CHART UPDATED
DATE JUN 30 1996

**OFFICE OF THE DIRECTOR OF STUDENT
EQUITY, EXCELLENCE AND DIVERSITY**

**HAWAI'I OPPORTUNITY PROGRAM
IN EDUCATION**

State of Hawai'i
University of Hawai'i
University of Hawai'i at Mānoa

Office:
**UHM Student Services
Hawai'i Opportunity
Program in Education**

Chart: IV-P
[CURRENT]

CHART UPDATED
DATE JUN 30 1996

**OFFICE OF THE DIRECTOR OF STUDENT
EQUITY, EXCELLENCE AND DIVERSITY**

OPERATION KUA'ANA
UH Educational Specialist III, P09, #81904 UH Student Services Specialist I, P03, #81919

State of Hawai'i
University of Hawai'i
University of Hawai'i at Mānoa

Office:
**UHM Student Services
Operation Kua'ana**

Chart: **IV-Q**
[CURRENT]

CHART UPDATED
DATE JUN 30 1996

**OFFICE OF THE DIRECTOR OF STUDENT
EQUITY, EXCELLENCE AND DIVERSITY**

State of Hawai'i
University of Hawai'i
University of Hawai'i at Mānoa

Office:
**UHM Student Services
Operation Manong**

Chart: IV-R
[CURRENT]

OPERATION MANONG
UH Educational Specialist III, P09, #80517

ADMINISTRATIVE SUPPORT
Clerk-Typist II, SR8, #43052

Associate Specialist, S4, #82281
UH Student Services Specialist I, P03, #81799
UH Student Services Specialist I, P03, #81801

CHART UPDATED
DATE JUN 30 1996

**OFFICE OF THE DIRECTOR OF STUDENT
EQUITY, EXCELLENCE AND DIVERSITY**

KOKUA PROGRAM

Educational Specialist III, P09, #80666

Educational Specialist I, P03, #80636

Educational Specialist I, P03, #80608

Educational Specialist II, P06, #81566

UH Educational Specialist I, P03 #81102

State of Hawai'i
University of Hawai'i
University of Hawai'i at Mānoa

Office:

**UHM Student Services
KOKUA Program**

Chart: IV-S
[CURRENT]

CHART UPDATED
JUN 30 1996
DATE _____