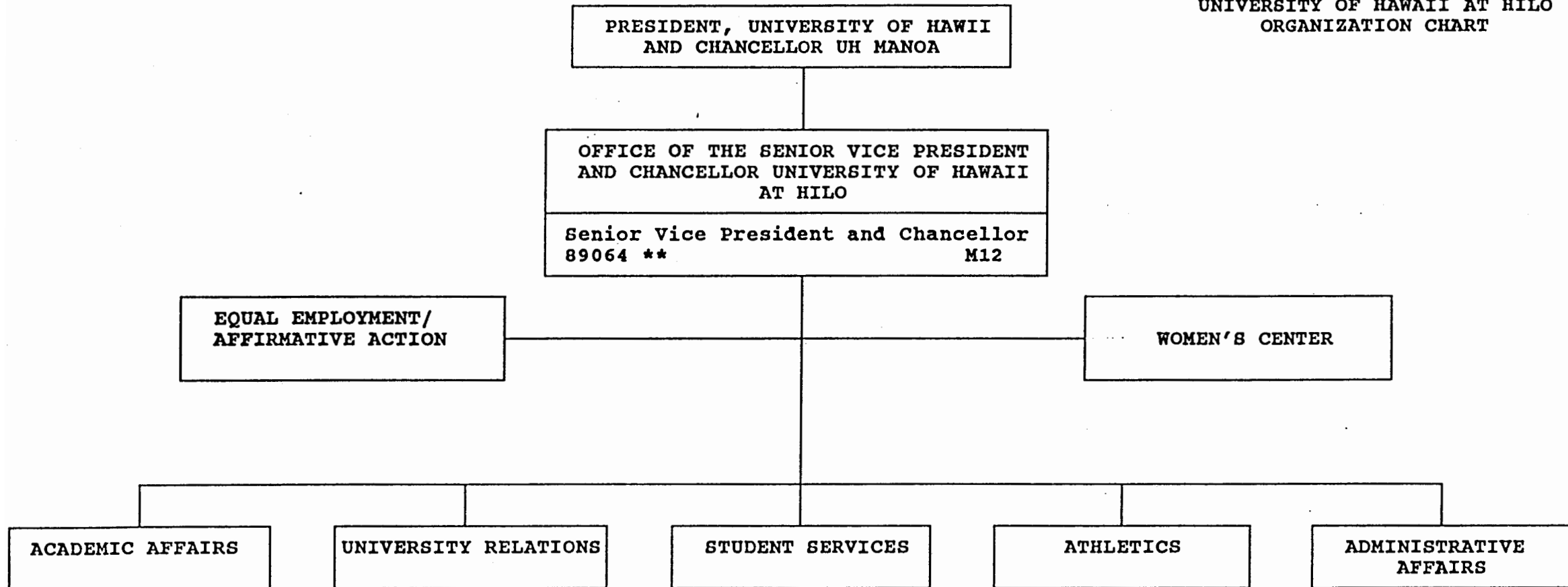


STATE OF HAWAII
UNIVERSITY OF HAWAII
UNIVERSITY OF HAWAII AT HILO
ORGANIZATION CHART



** Senior VP/Chancellor's position to be redescribed

APPROVED BY THE UNIVERSITY
BOARD OF REGENTS
MAY 16 1997

Date

STATE OF HAWAII
UNIVERSITY OF HAWAII
UNIVERSITY OF HAWAII AT HILO
POSITION ORGANIZATIONAL CHART
CHART I

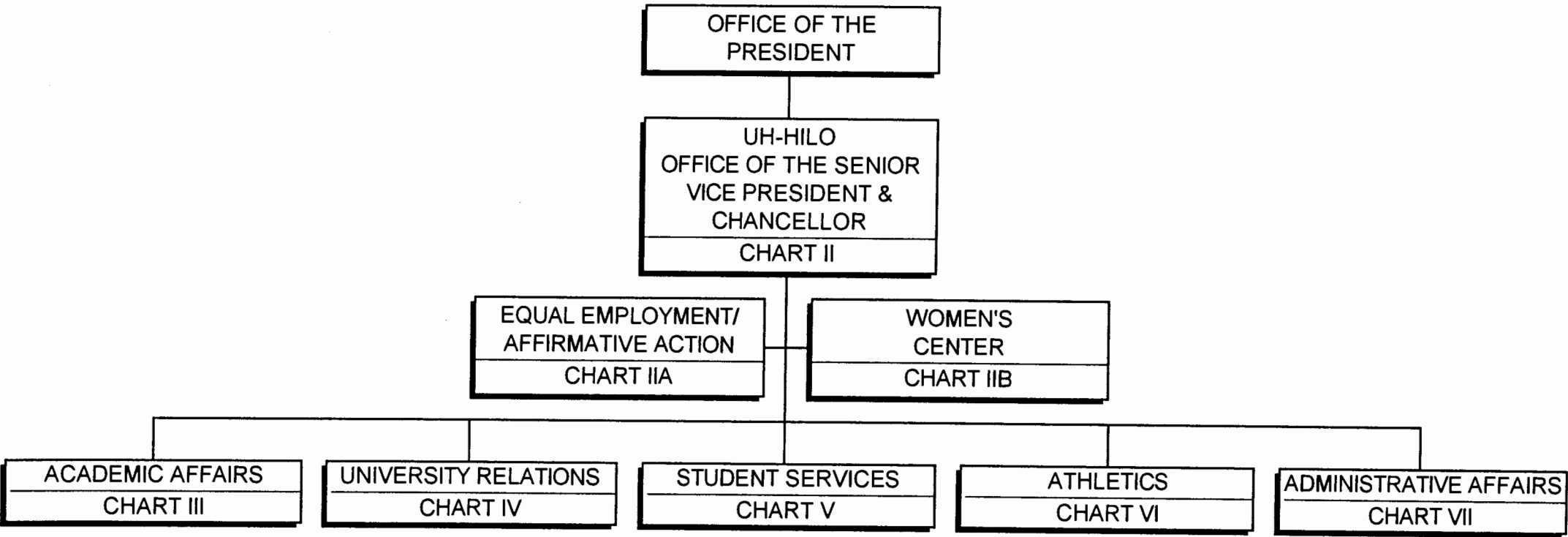


CHART UPDATED
DATE JUN 30 1996.

STATE OF HAWAII
UNIVERSITY OF HAWAII
UNIVERSITY OF HAWAII AT HILO &
UNIVERSITY OF HAWAII WEST OAHU

SUPERSEDED
Date MAY 16 1997

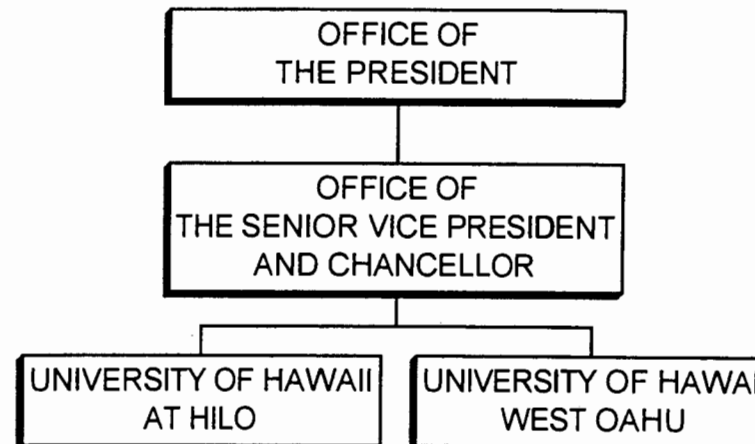


CHART UPDATED
DATE JUN 30 1996

STATE OF HAWAII
UNIVERSITY OF HAWAII
UNIVERSITY OF HAWAII AT HILO
OFFICE OF THE SENIOR VP & CHANCELLOR
POSITION ORGANIZATION CHART
CHART II

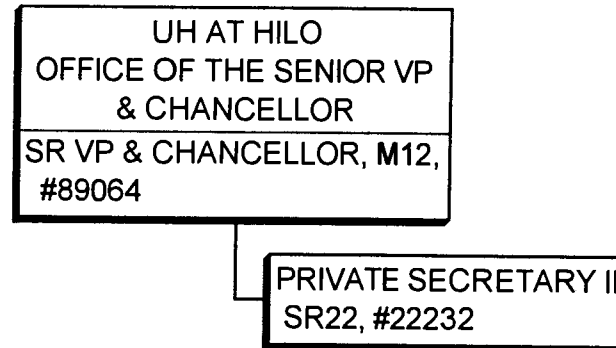
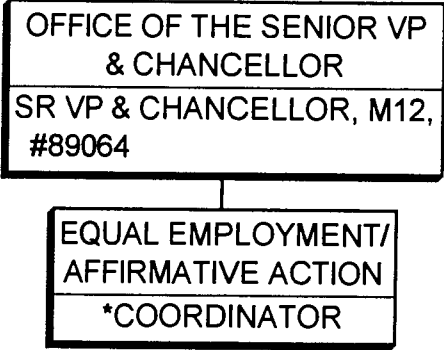


CHART UPDATED
JUN 30 1996.
DATE _____

STATE OF HAWAII
UNIVERSITY OF HAWAII
UNIVERSITY OF HAWAII AT HILO
OFFICE OF THE SENIOR VP & CHANCELLOR
EEO/AA
POSITION ORGANIZATION CHART
CHART IIA



* Filled by faculty position
CAS faculty position #83158
on release time

CHART UPDATED
JUN 30 1996
DATE _____

STATE OF HAWAII
UNIVERSITY OF HAWAII
UNIVERSITY OF HAWAII AT HILO
OFFICE OF THE SENIOR VP & CHANCELLOR
WOMEN'S CENTER
POSITION ORGANIZATION CHART
CHART IIB

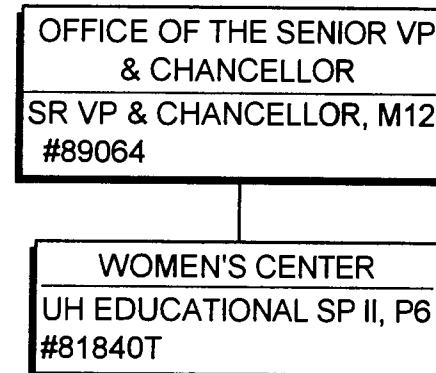


CHART UPDATED
JUN 30 1996.
DATE _____

POSITIONS
TEMPORARY GENERAL FUND - 1.00