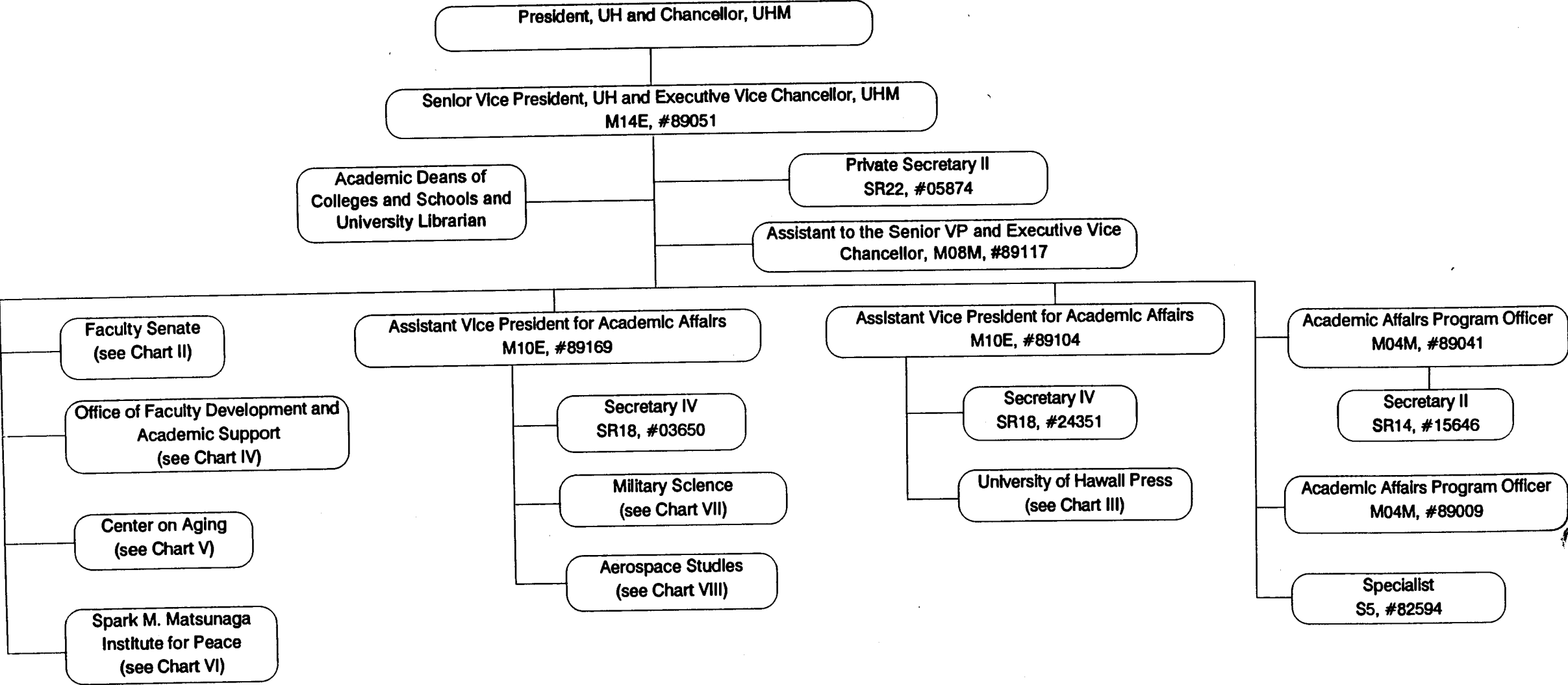


STATE OF HAWAII
UNIVERSITY OF HAWAII AT MANOA
SENIOR VICE PRESIDENT AND EXECUTIVE VICE CHANCELLOR
Position Organization Chart
CHART I



General Fund 11.0 FTE
Transfer of Pos. No. 89117 from Ofc of Faculty Development & Academic Support to
Ofc of Sr Vice President & Executive Vice Chancellor approved.

Carol Eastman JUN 30 1996
Carol Eastman
Senior Vice President & Exec Vice Chancellor

STATE OF HAWAII
UNIVERSITY OF HAWAII AT MANOA
SENIOR VICE PRESIDENT AND EXECUTIVE VICE CHANCELLOR
Position Organization Chart
CHART I

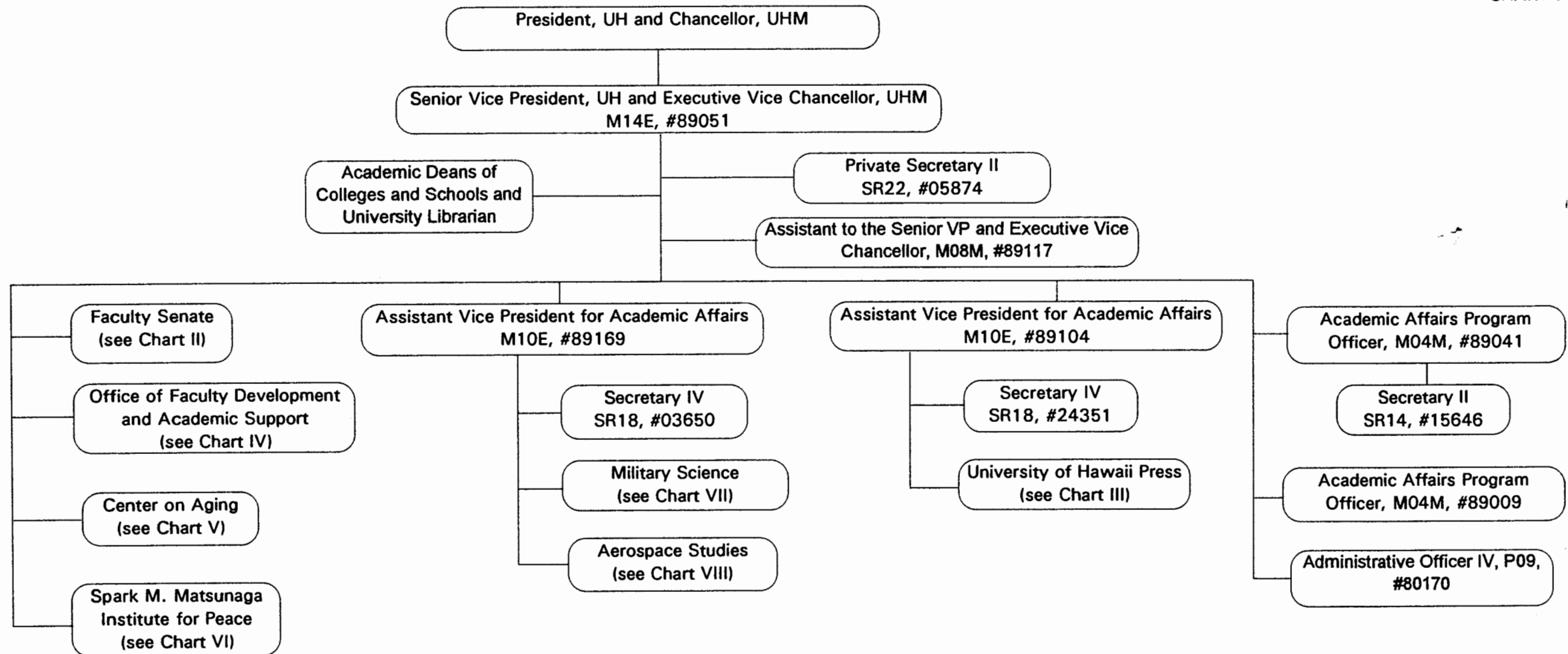


CHART UPDATED
DATE JUN 30 1996

General Fund 11.0 FTE