

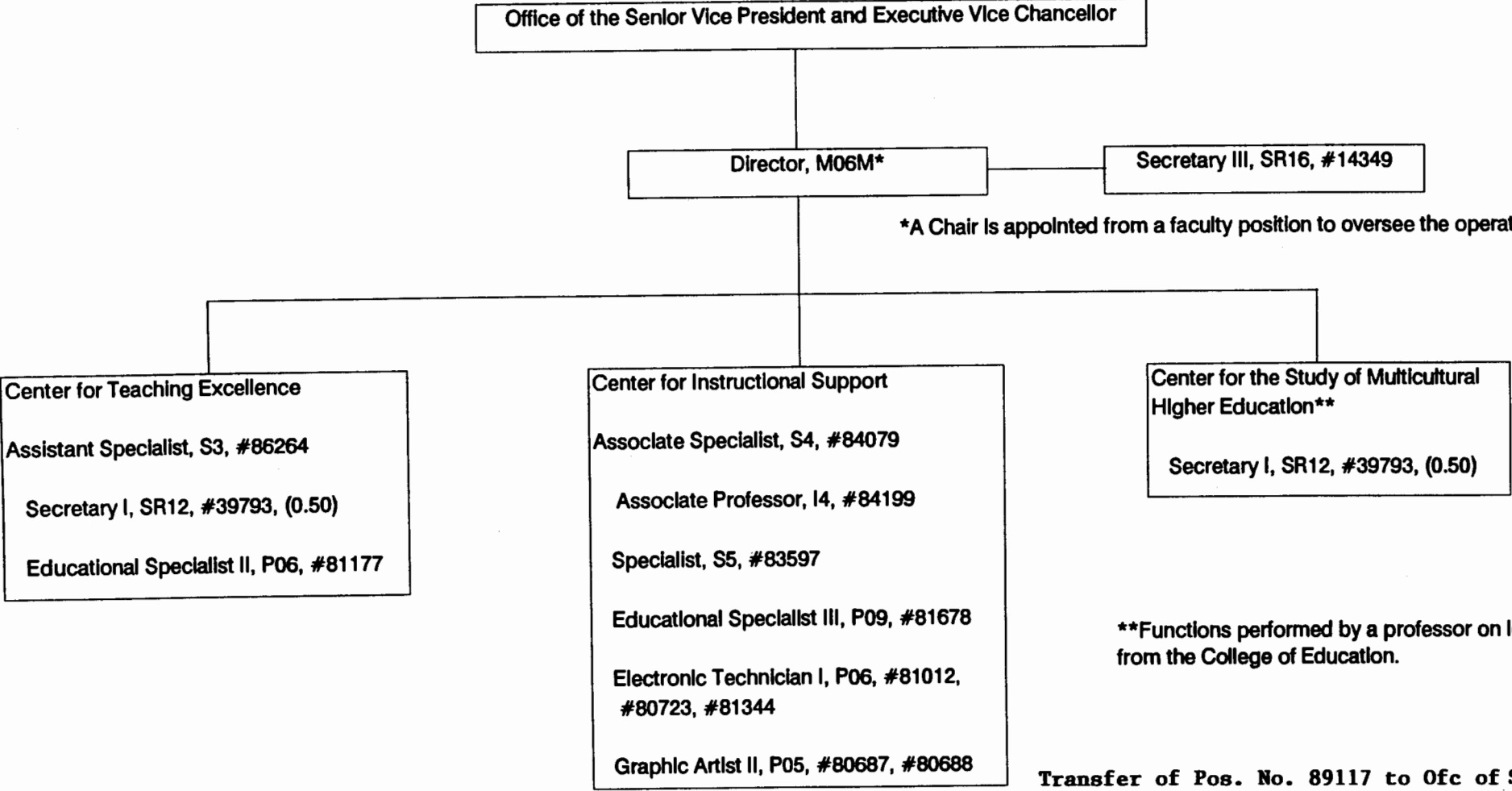
*A Chair is appointed from a faculty position to oversee the operations of OFDAS.

**Functions performed by a professor on loan from the College of Education.

General Fund 13.0 FTE

CHART UPDATED
JUN 30 1996

DATE _____



**Functions performed by a professor on loan from the College of Education.

General Fund 13.0 FTE
Transfer of Pos. No. 89117 to Ofc of SVPEVC approved.

Carol M. Eastman
Carol Eastman
Senior Vice President & Exec Vice Chanc
JUN 30 1996