

STATE OF HAWAII
UNIVERSITY OF HAWAII
UNIVERSITY OF HAWAII AT MANOA
SCHOOL OF OCEAN AND EARTH
SCIENCE AND TECHNOLOGY

ORGANIZATION CHART

CHART XXXI

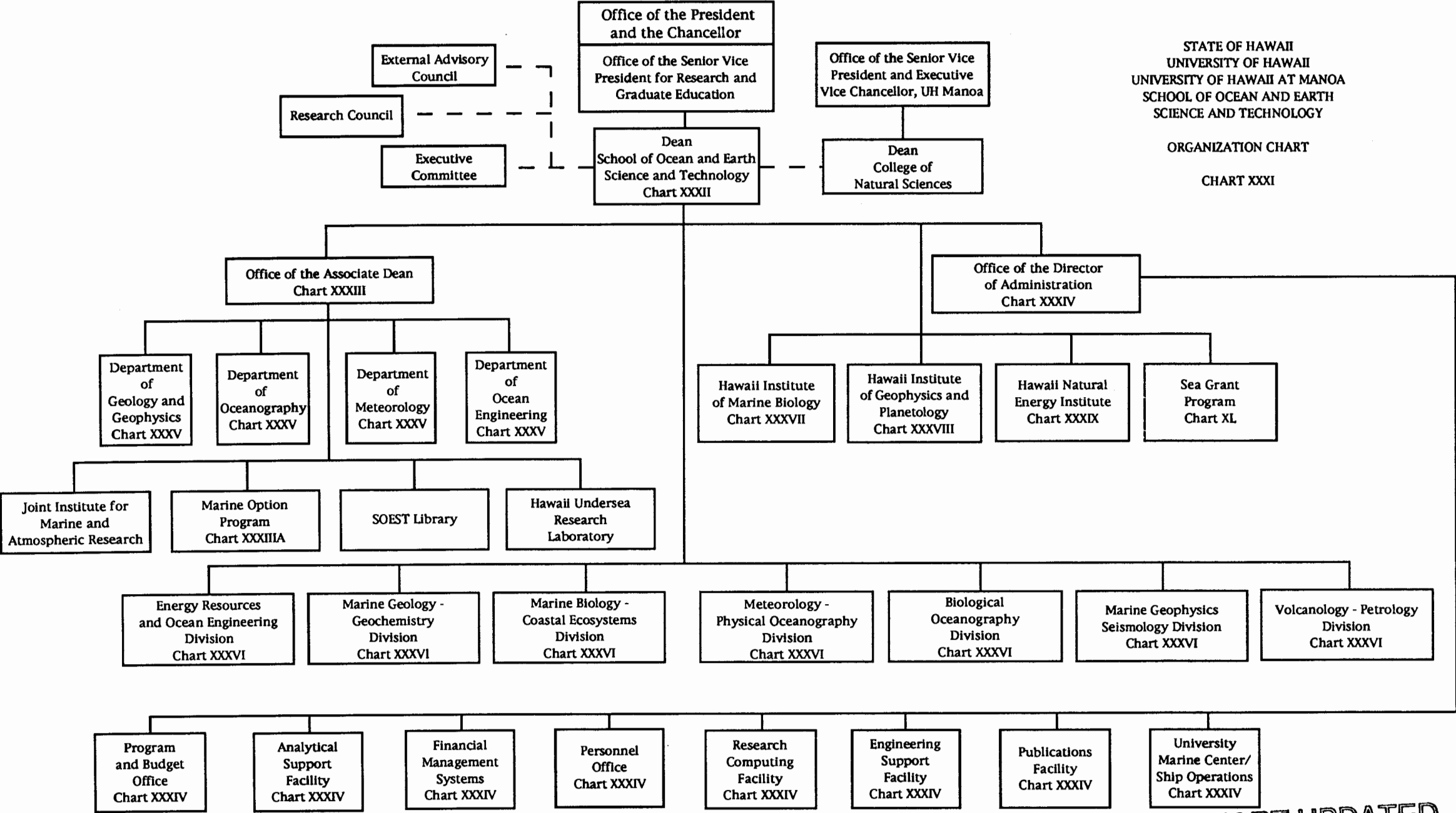


CHART UPDATED
DATE JUN 30 1996

STATE OF HAWAII
UNIVERSITY OF HAWAII
UNIVERSITY OF HAWAII AT MANOA
SCHOOL OF OCEAN AND EARTH
SCIENCE AND TECHNOLOGY

OFFICE OF THE DEAN
POSITION ORGANIZATION CHART

CHART XXXII

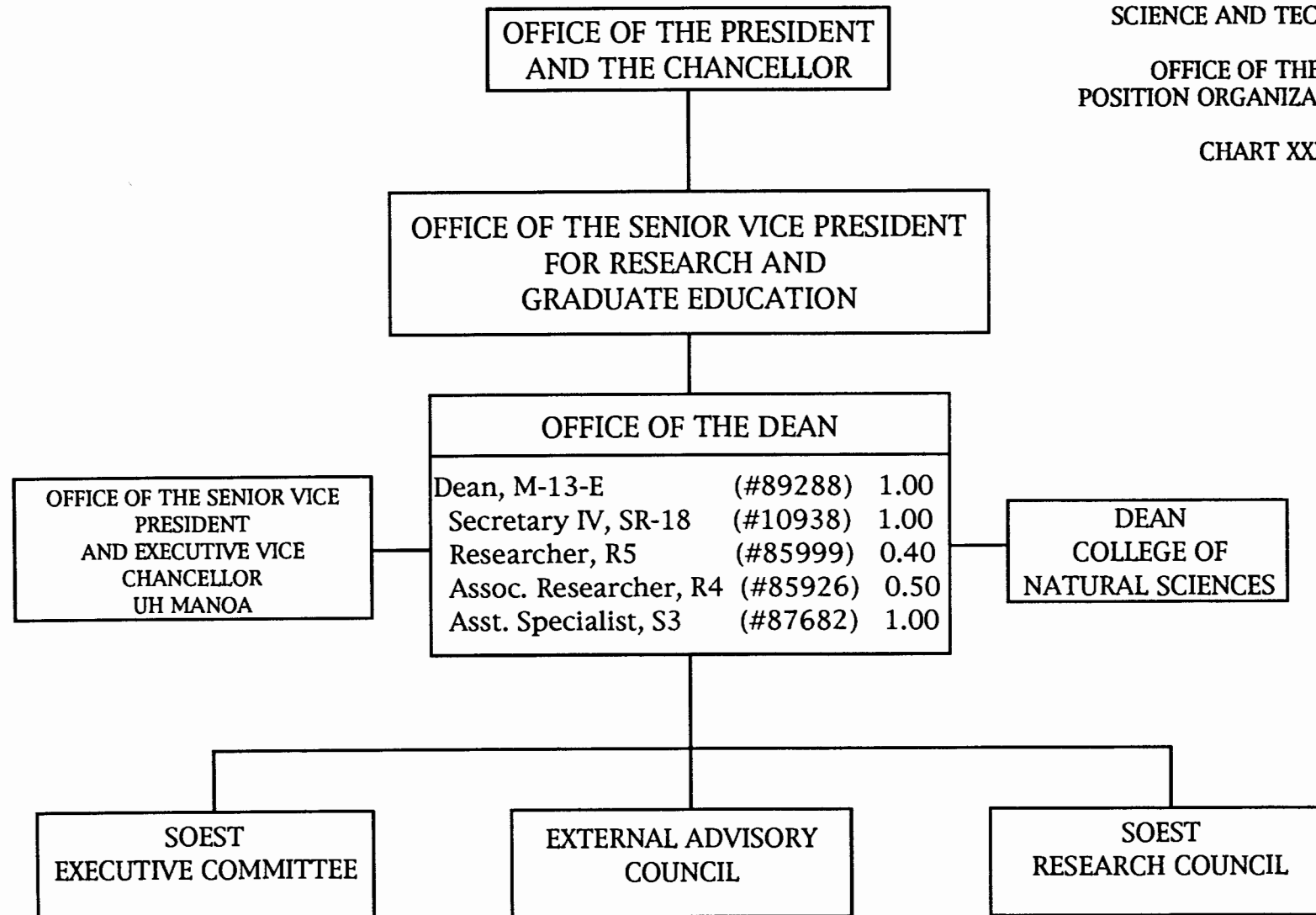
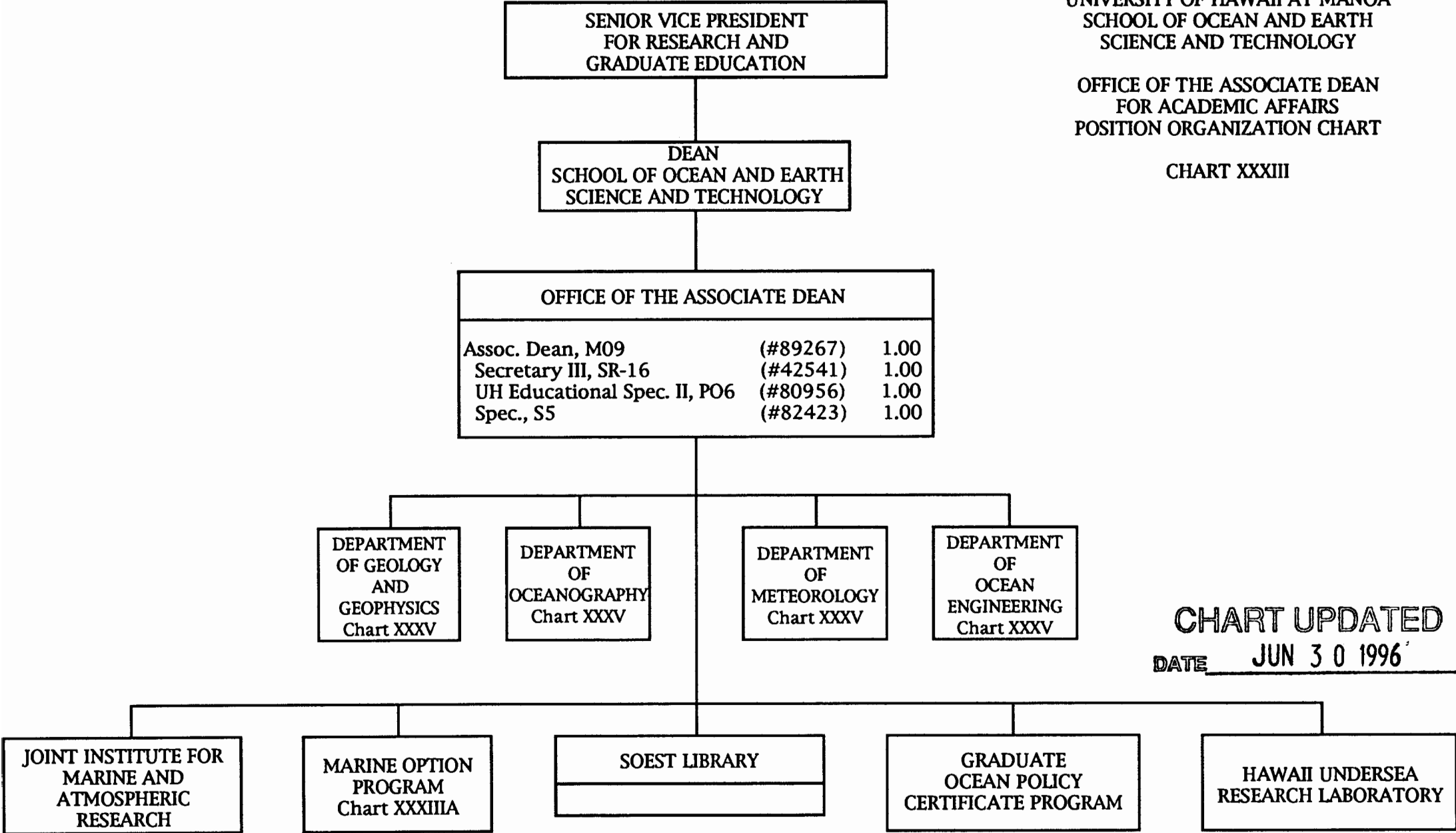


CHART UPDATED
DATE JUN 30 1996

STATE OF HAWAII
UNIVERSITY OF HAWAII
UNIVERSITY OF HAWAII AT MANOA
SCHOOL OF OCEAN AND EARTH
SCIENCE AND TECHNOLOGY

OFFICE OF THE ASSOCIATE DEAN
FOR ACADEMIC AFFAIRS
POSITION ORGANIZATION CHART

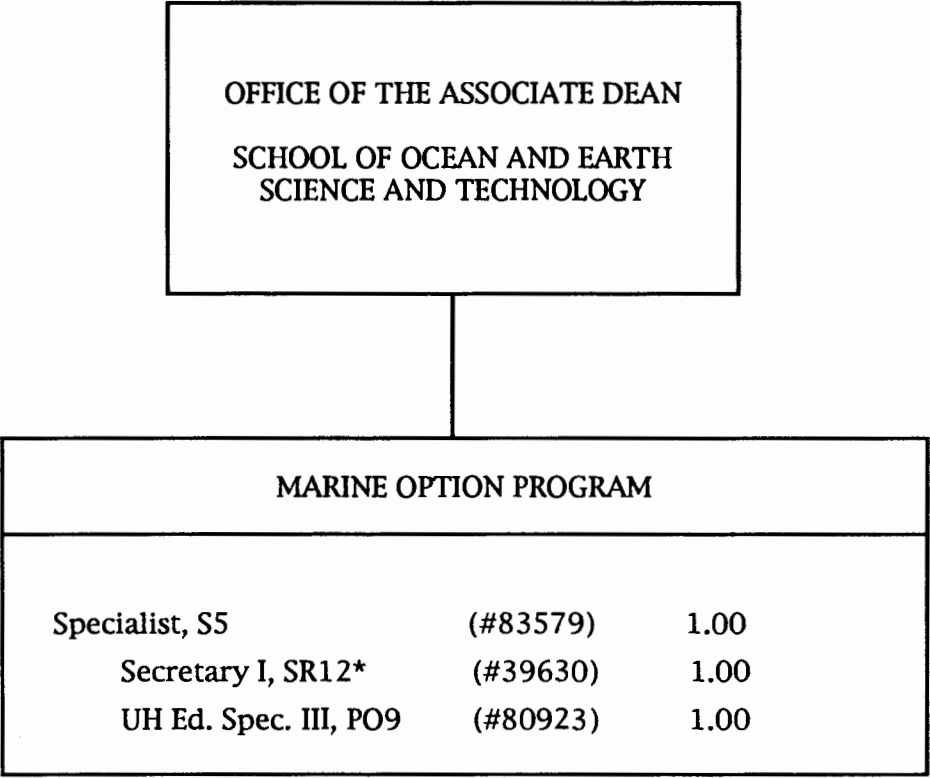
CHART XXXIII



STATE OF HAWAII
UNIVERSITY OF HAWAII
UNIVERSITY OF HAWAII AT MANOA
SCHOOL OF OCEAN AND EARTH
SCIENCE AND TECHNOLOGY

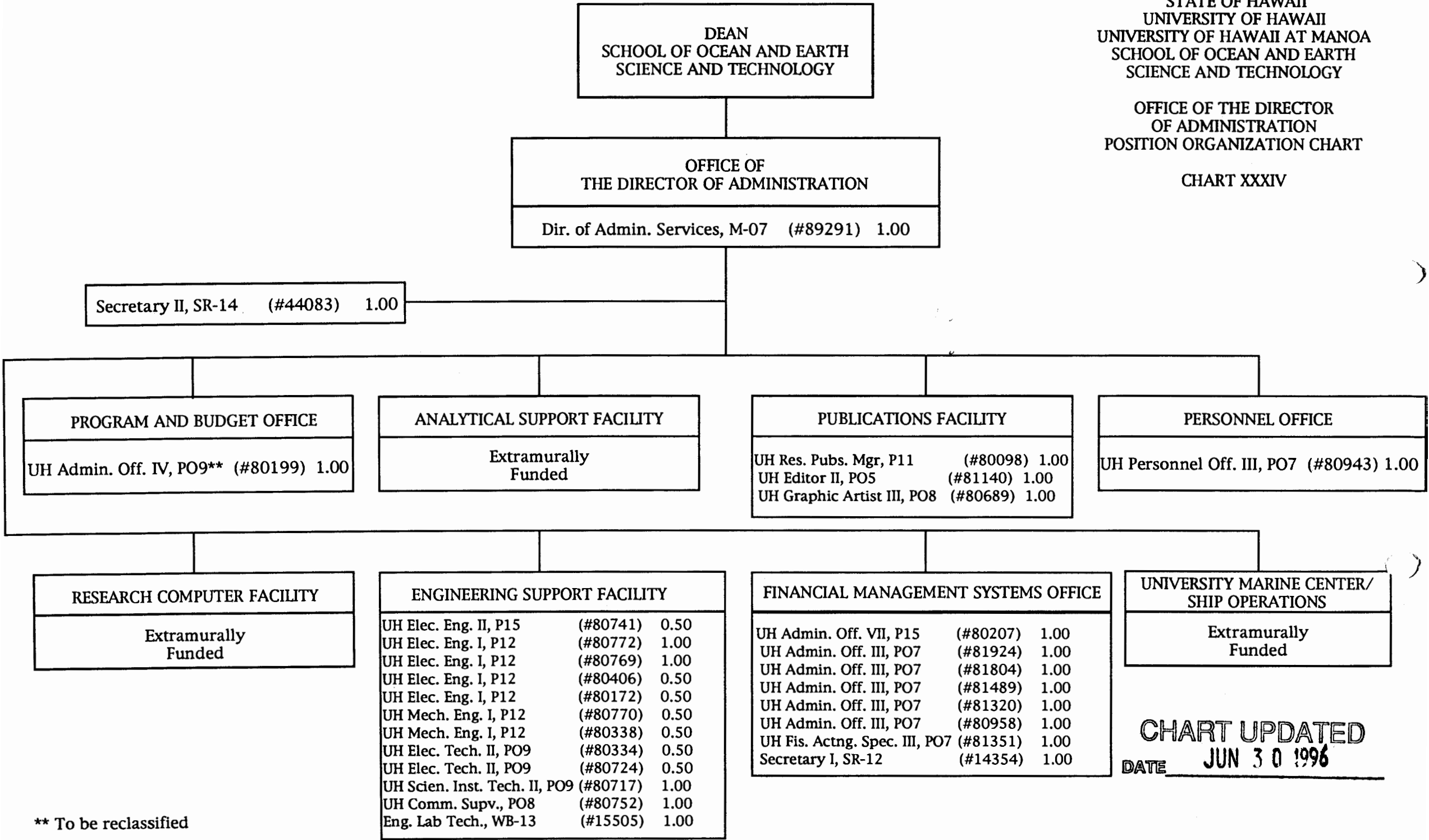
MARINE OPTION PROGRAM
POSITION ORGANIZATION CHART

CHART XXXIII A



* To be reclassified

CHART UPDATED
DATE JUN 30 1996



** To be reclassified

STATE OF HAWAII
UNIVERSITY OF HAWAII
UNIVERSITY OF HAWAII AT MANOA
SCHOOL OF OCEAN AND EARTH
SCIENCE AND TECHNOLOGY

DEPARTMENTS
POSITION ORGANIZATION CHART

CHART XXXV

DEAN
SCHOOL OF OCEAN AND EARTH
SCIENCE AND TECHNOLOGY

OFFICE OF THE
ASSOCIATE DEAN

DEPARTMENT OF GEOLOGY AND GEOPHYSICS			
Chair *			
Secretary II, SR-14	(#36725)	1.00	
Faculty Positions (Joint Appt.):		12.75	
[#82011 (0.25), 82166 (0.50),			
82622 (0.50), 82729 (0.50),			
83213 (0.50), 83643 (0.50),			
83875 (0.75), 83912 (0.50),			
84009 (0.50), 84795 (0.50),			
85153 (0.50), 85338 (0.50),			
85535 (0.50), 85865 (0.50),			
85978 (0.50), 85997 (0.50),			
86012 (0.50), 86351 (0.50),			
86497 (0.50), 86576 (0.50),			
86609 (0.50), 88168 (0.50),			
88172 (0.50), 88174 (0.50),			
85598 (0.75)]			
Graduate Assistants:		2.00	
[#88075 (0.50), 88137 (0.50),			
88443 (0.50), 88594 (0.50)]			
			15.75

DEPARTMENT OF METEOROLOGY			
Chair*			
Secretary II, SR-14	(#14351)	1.00	
UH Sci. Inst. Tech. II P-09	(#80708)	1.00	
Faculty Positions:		9.00	
[#82008 (1.00), 82077 (1.00),			
82368 (1.00), 82491 (1.00),			
82709 (1.00), 82712 (1.00),			
83700 (1.00), 84107 (1.00),			
84300 (1.00)]			
Graduate Assistants:		1.00	
[#85028 (0.50), 88339 (0.50)]			
			12.00

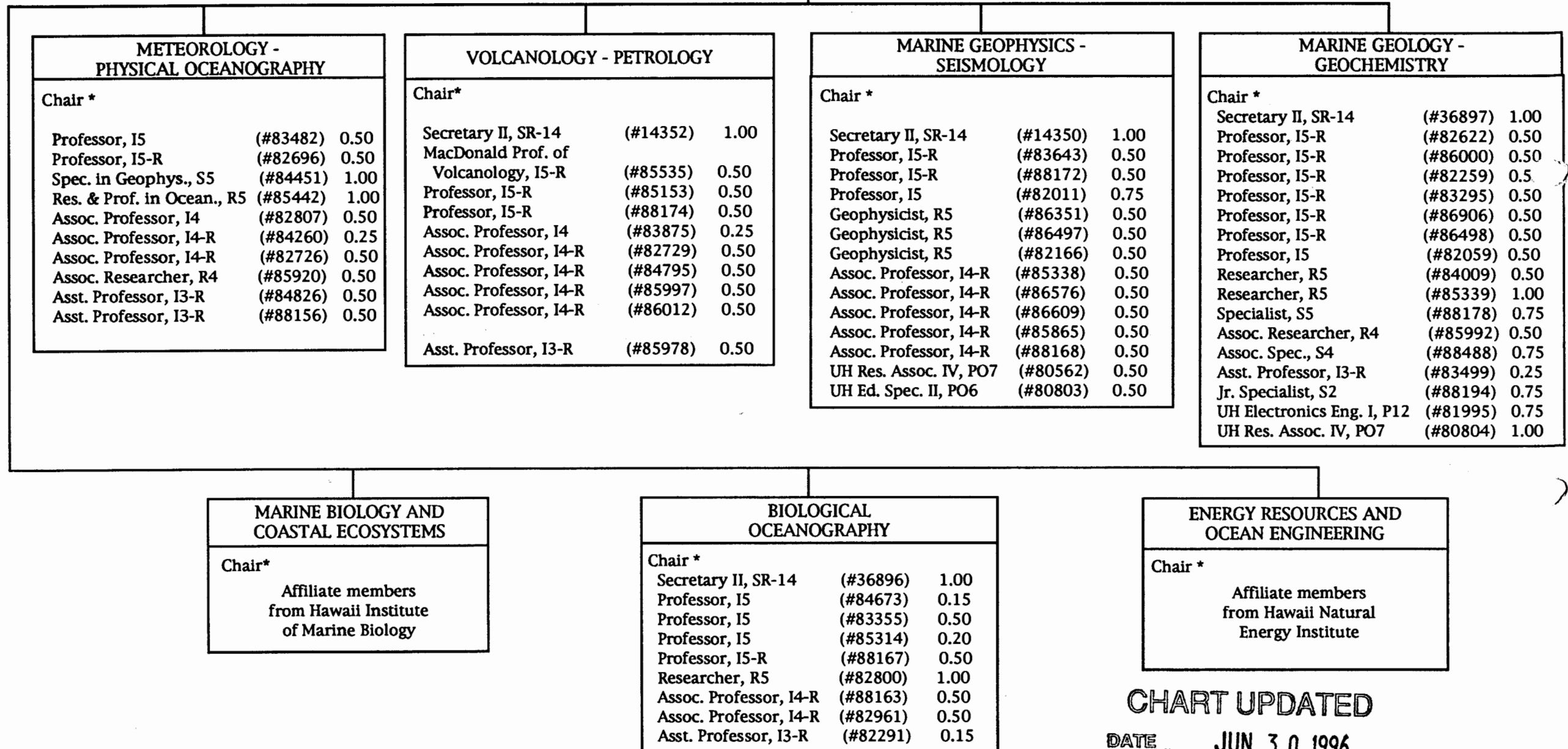
DEPARTMENT OF OCEANOGRAPHY			
Chair *			
Secretary II, SR-14	(#13891)	1.00	
Faculty Positions (Joint Appt.):		14.50	
[#82059 (0.50), 82259 (0.50),			
82291 (0.85), 82696 (0.50),			
82726 (0.50), 82807 (0.50),			
82961 (0.50), 83295 (0.50),			
83355 (0.50), 83482 (0.50),			
83499 (0.75), 84260 (0.75),			
84601 (1.00), 84673 (0.85),			
86906 (0.50), 84826 (0.50),			
85314 (0.80), 85920 (0.50),			
85992 (0.50), 86000 (0.50),			
86498 (0.50), 88154 (0.50),			
88156 (0.50), 88163 (0.50),			
88167 (0.50)]			
Graduate Assistants:		2.00	
[#84941 (0.50), 88119 (0.50),			
88160 (0.50), 88569 (0.50)]			
			17.50

DEPARTMENT OF OCEAN ENGINEERING			
Chair *			
Secretary II, SR-14	(#18083)	1.00	
UH Sci. Inst. Tech. II, P09	(#80720)	1.00	
UH Elec. Tech. II, P09	(#80716)	0.50	
Faculty Positions:		7.50	
Full Time:			
[#82130 (1.00), 82736 (1.00),			
83031 (1.00), 83376 (1.00),			
83802 (1.00), 84118 (1.00),			
84447 (1.00), 84222 (0.50)]			
Graduate Assistants:		1.00	
[#88382 (0.50), 93521 (0.50)]			
			11.00

CHART UPDATED
DATE JUN 30 1996

* Appointed from faculty positions

DEAN
SCHOOL OF OCEAN AND EARTH
SCIENCE AND TECHNOLOGY



* Appointed from faculty positions

CHART UPDATED
DATE JUN 30 1996

STATE OF HAWAII
UNIVERSITY OF HAWAII
UNIVERSITY OF HAWAII AT MANOA
SCHOOL OF OCEAN AND EARTH
SCIENCE AND TECHNOLOGY

HAWAII INSTITUTE OF MARINE BIOLOGY
ORGANIZATION CHART

CHART XXXVII

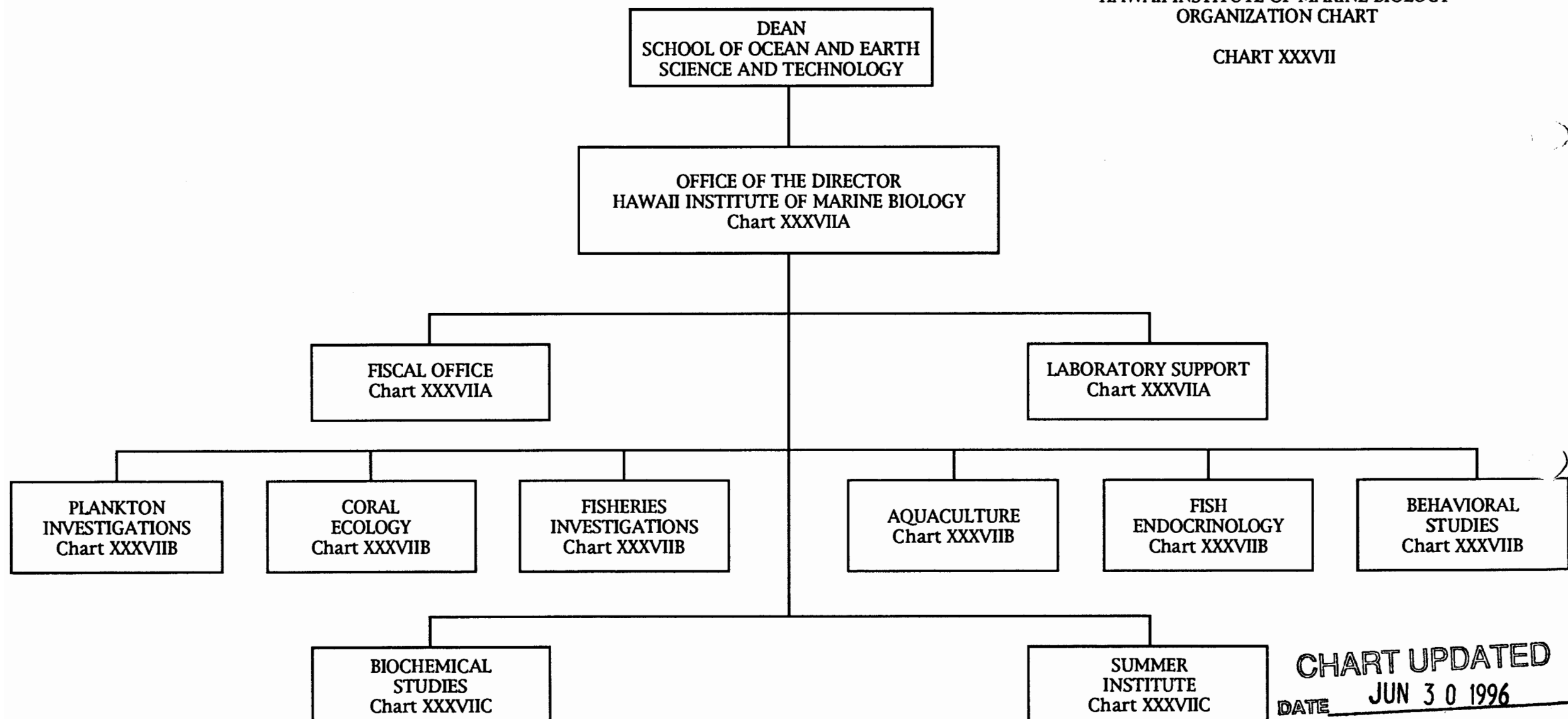


CHART UPDATED
DATE JUN 30 1996

STATE OF HAWAII
UNIVERSITY OF HAWAII
UNIVERSITY OF HAWAII AT MANOA
SCHOOL OF OCEAN AND EARTH
SCIENCE AND TECHNOLOGY

HAWAII INSTITUTE OF MARINE BIOLOGY
POSITION ORGANIZATION CHART

CHART XXXVIIA

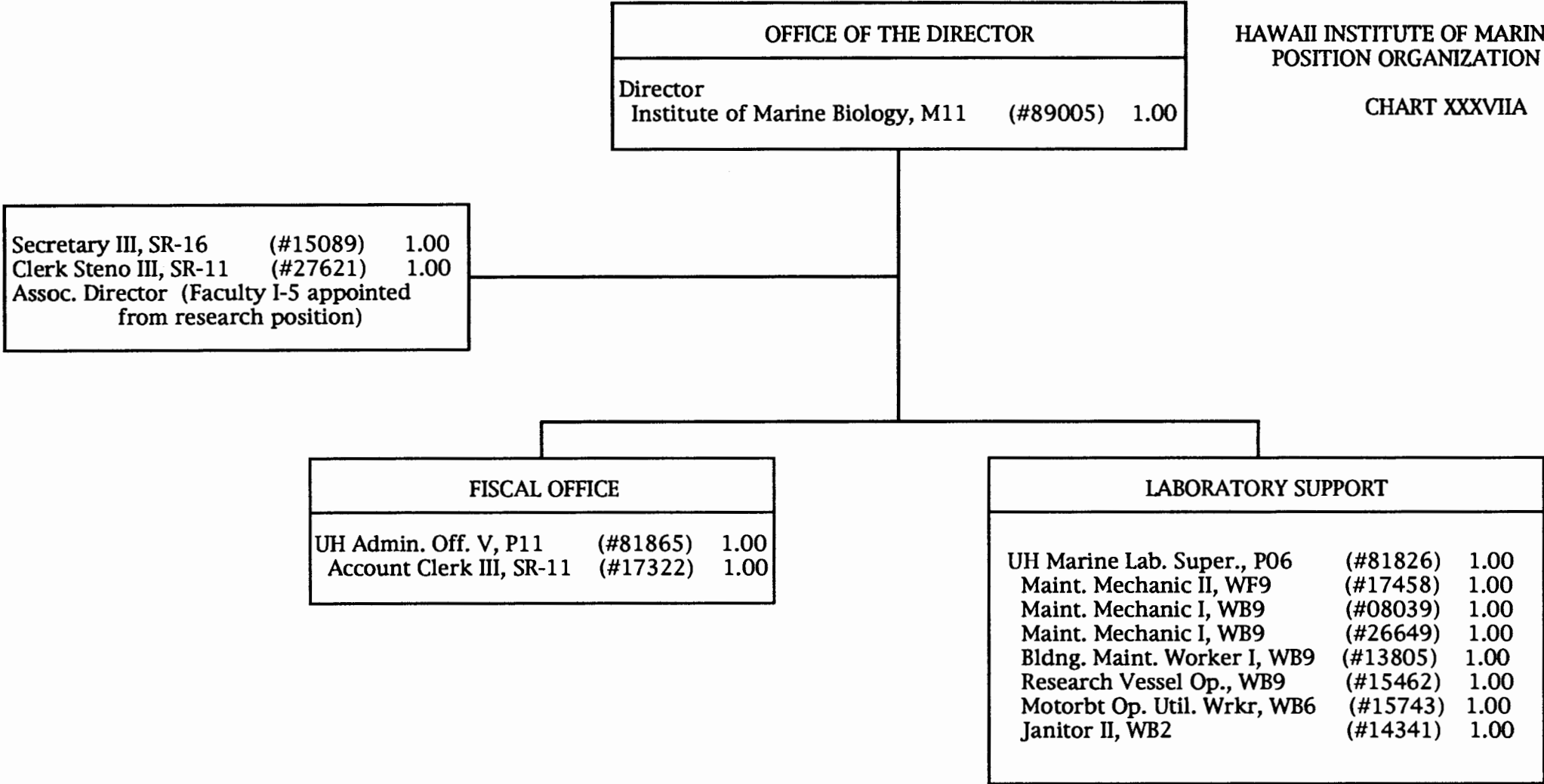


CHART UPDATED
DATE JUN 30 1996

STATE OF HAWAII
UNIVERSITY OF HAWAII
UNIVERSITY OF HAWAII AT MANOA
SCHOOL OF OCEAN AND EARTH
SCIENCE AND TECHNOLOGY

HAWAII INSTITUTE OF MARINE BIOLOGY
POSITION ORGANIZATION CHART

CHART XXXVIIB

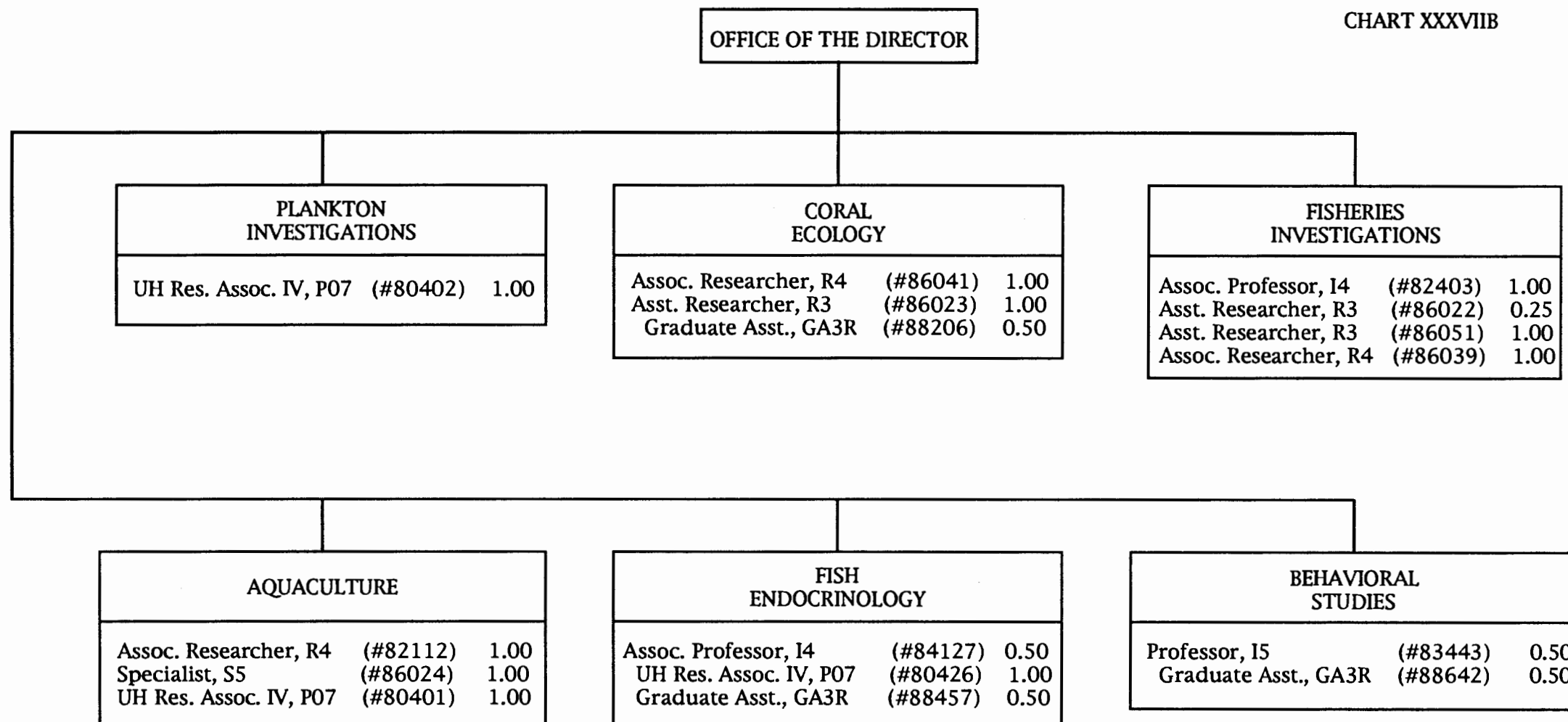


CHART UPDATED

DATE JUN 30 1996

STATE OF HAWAII
UNIVERSITY OF HAWAII
UNIVERSITY OF HAWAII AT MANOA
SCHOOL OF OCEAN AND EARTH
SCIENCE AND TECHNOLOGY

HAWAII INSTITUTE OF MARINE BIOLOGY
POSITION ORGANIZATION
CHART

CHART XXXVIIC

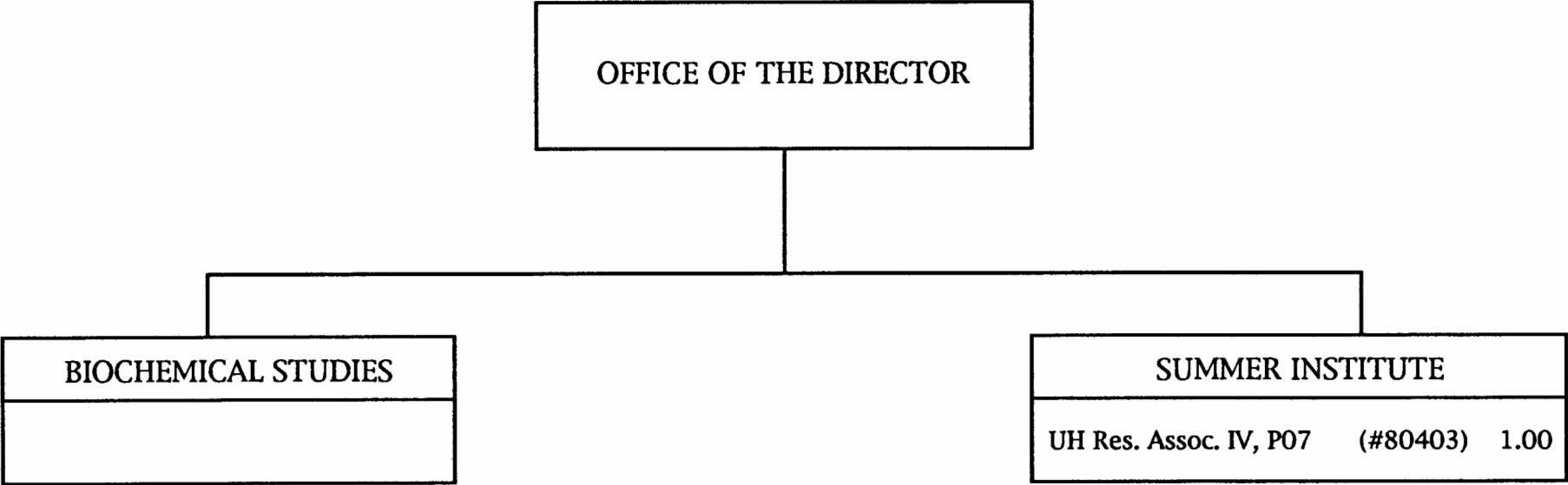
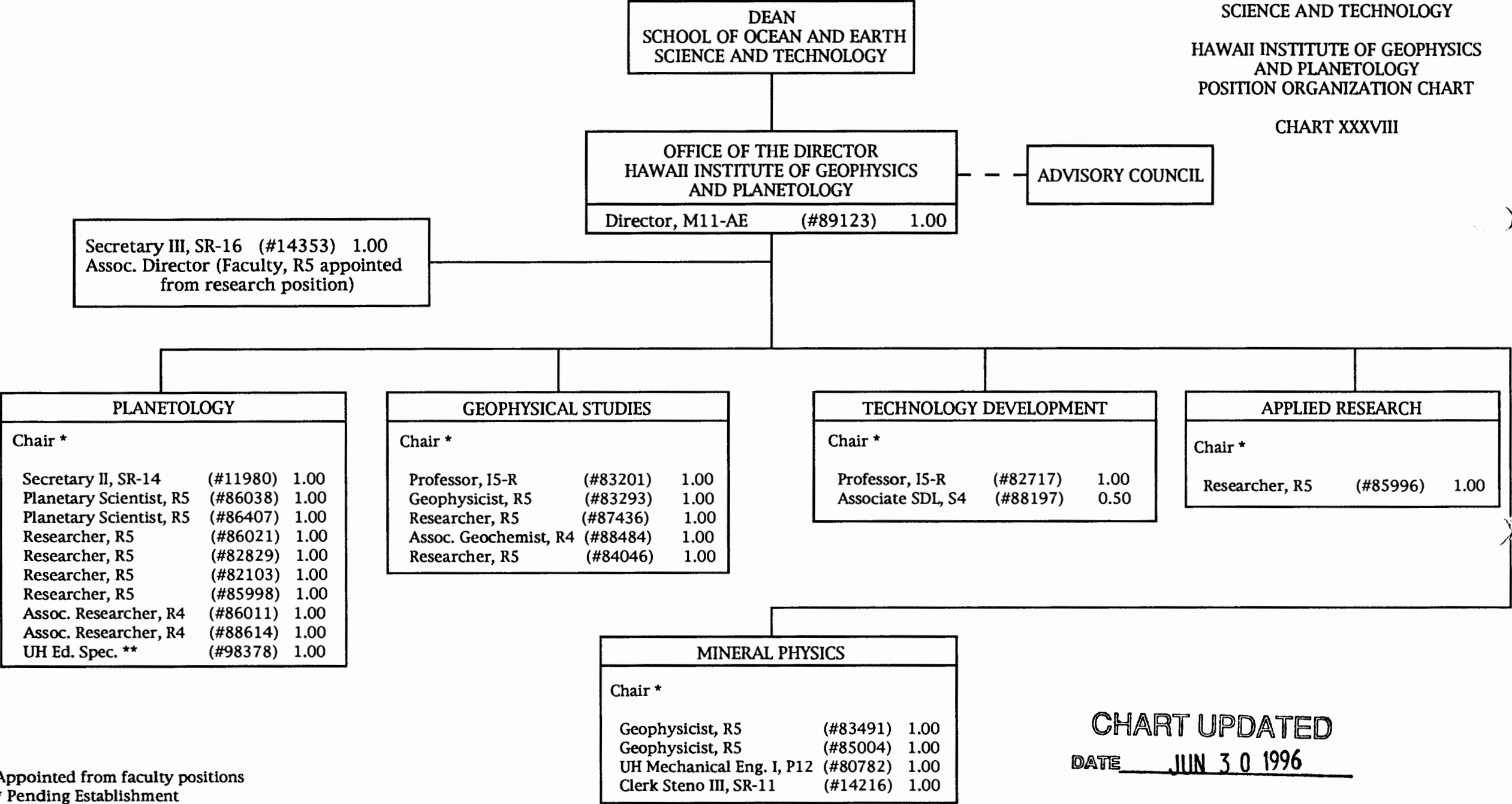


CHART UPDATED
DATE JUN 30 1996



*Appointed from faculty positions
** Pending Establishment

STATE OF HAWAII
UNIVERSITY OF HAWAII
UNIVERSITY OF HAWAII AT MANOA
SCHOOL OF OCEAN AND EARTH
SCIENCE AND TECHNOLOGY

HAWAII NATURAL ENERGY INSTITUTE
POSITION ORGANIZATION CHART

CHART XXXIX

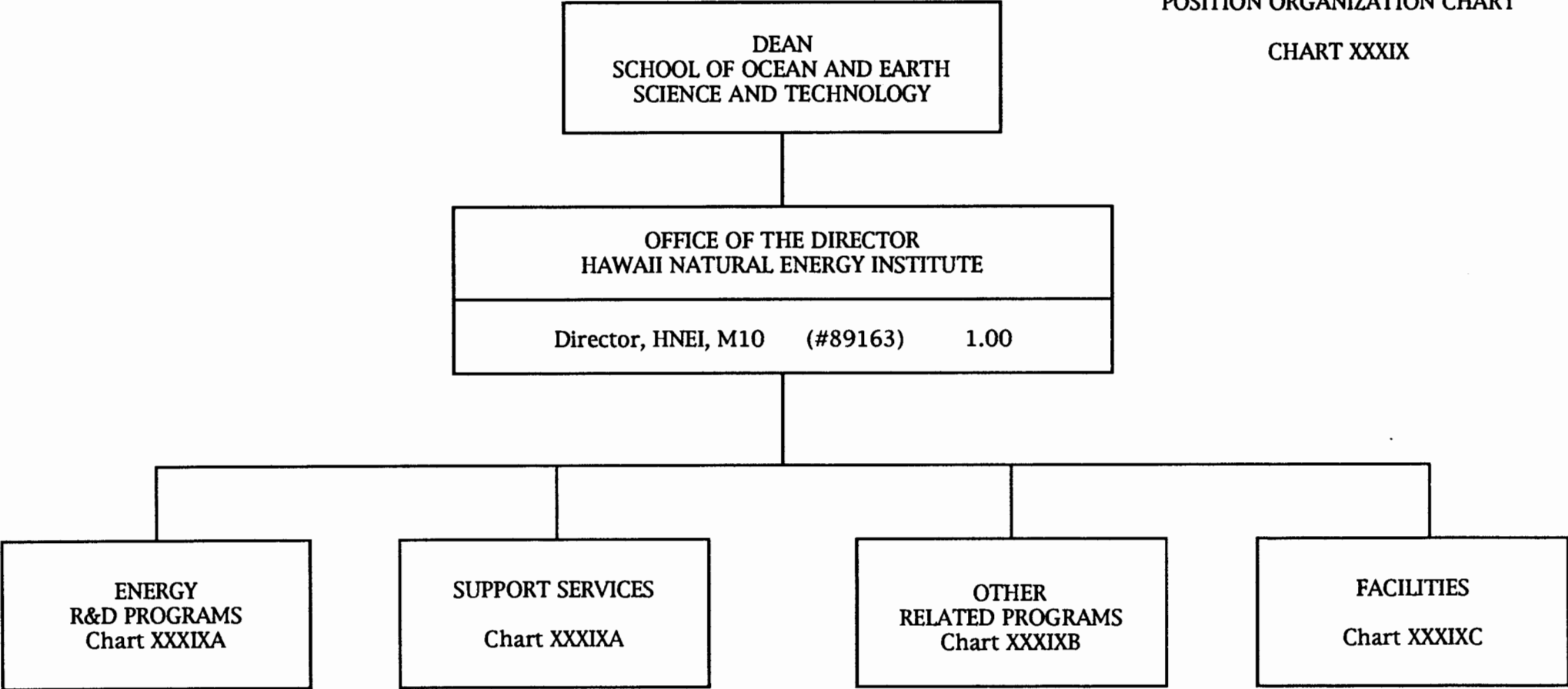


CHART UPDATED

DATE JUN 30 1996

STATE OF HAWAII
UNIVERSITY OF HAWAII
UNIVERSITY OF HAWAII AT MANOA
SCHOOL OF OCEAN AND EARTH
SCIENCE AND TECHNOLOGY

HAWAII NATURAL ENERGY INSTITUTE
POSITION ORGANIZATION CHART

CHART XXXIXA

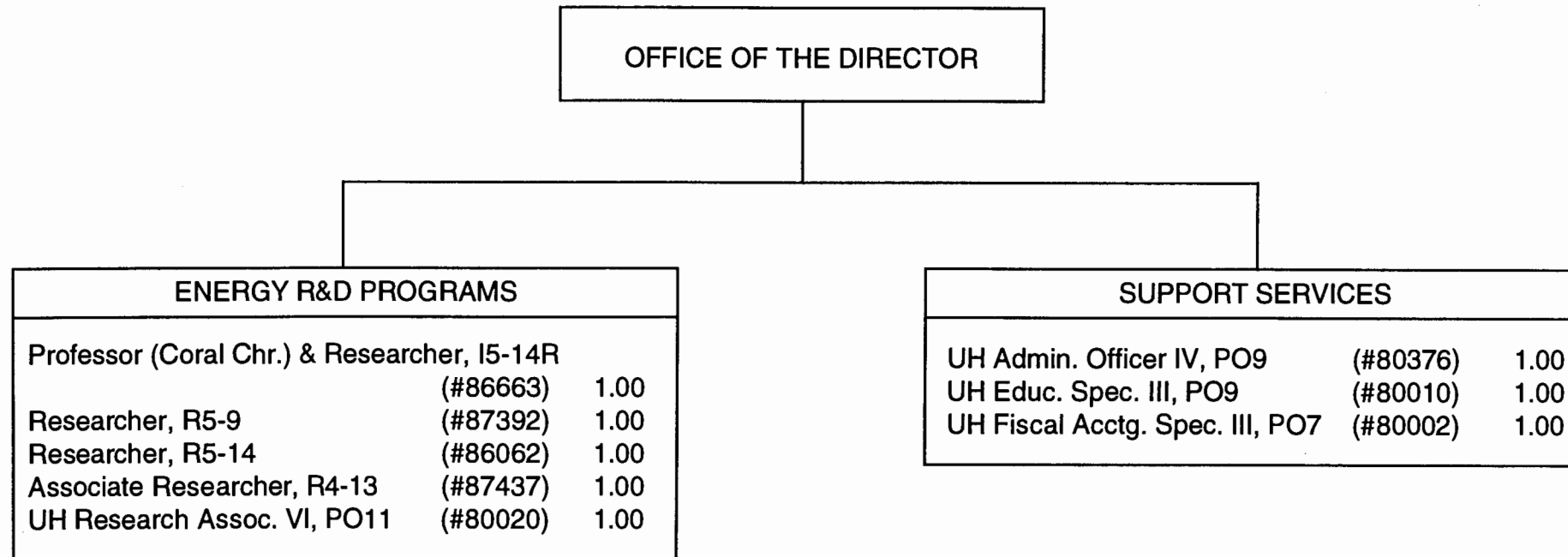


CHART UPDATED
DATE JUN 30 1996

STATE OF HAWAII
UNIVERSITY OF HAWAII
UNIVERSITY OF HAWAII AT MANOA
SCHOOL OF OCEAN AND EARTH
SCIENCE AND TECHNOLOGY

HAWAII NATURAL ENERGY INSTITUTE
POSITION ORGANIZATION CHART

CHART XXXIXB

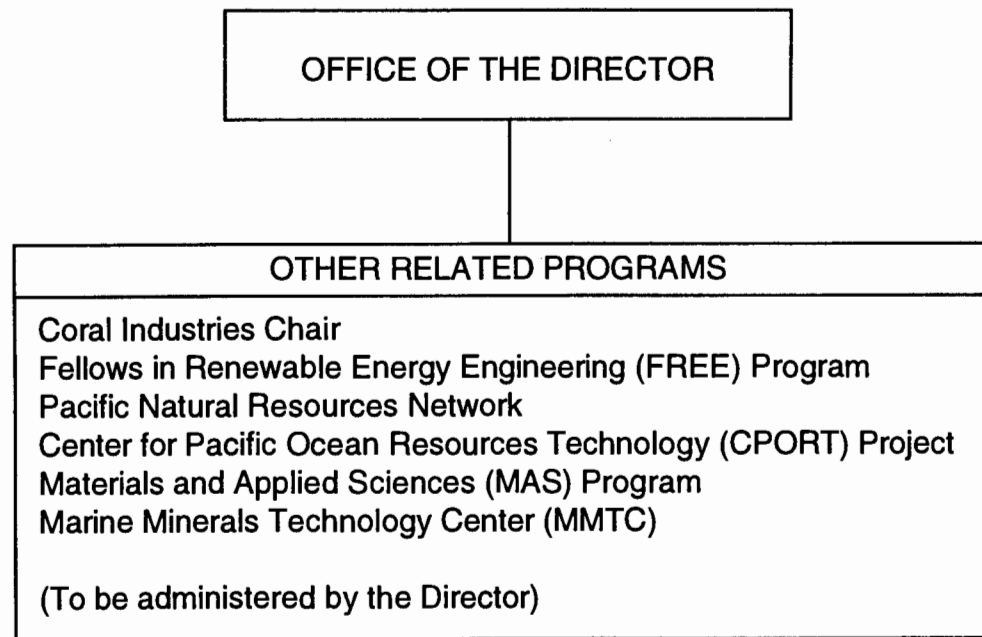
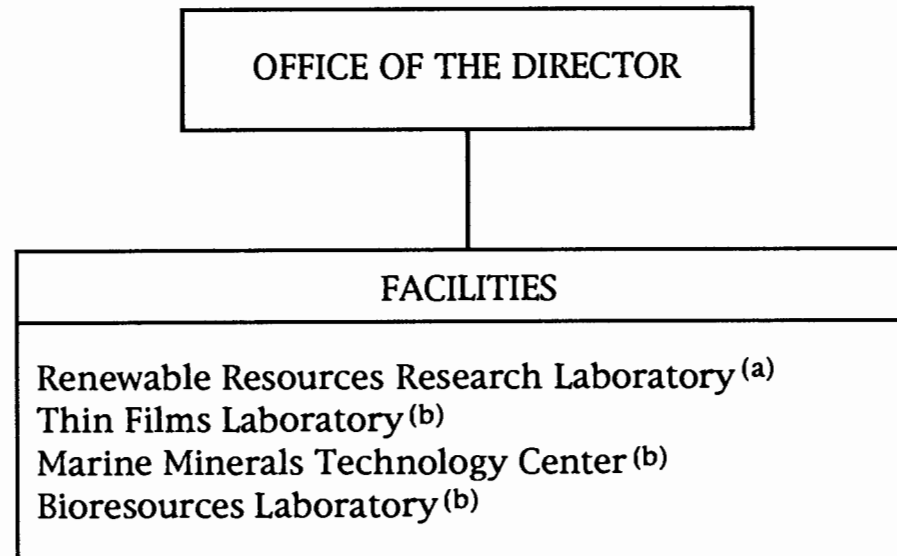


CHART UPDATED
DATE JUN 30 1996

STATE OF HAWAII
UNIVERSITY OF HAWAII
UNIVERSITY OF HAWAII AT MANOA
SCHOOL OF OCEAN AND EARTH
SCIENCE AND TECHNOLOGY

HAWAII NATURAL ENERGY INSTITUTE
POSITION ORGANIZATION CHART

CHART XXXIXC



(a) administered by Coral Chair

(b) administration and research supervisory role

CHART UPDATED
DATE JUN 30 1996

STATE OF HAWAII
UNIVERSITY OF HAWAII
UNIVERSITY OF HAWAII AT MANOA
SCHOOL OF OCEAN AND EARTH
SCIENCE AND TECHNOLOGY

SEA GRANT COLLEGE PROGRAM
ORGANIZATION CHART

CHART XL

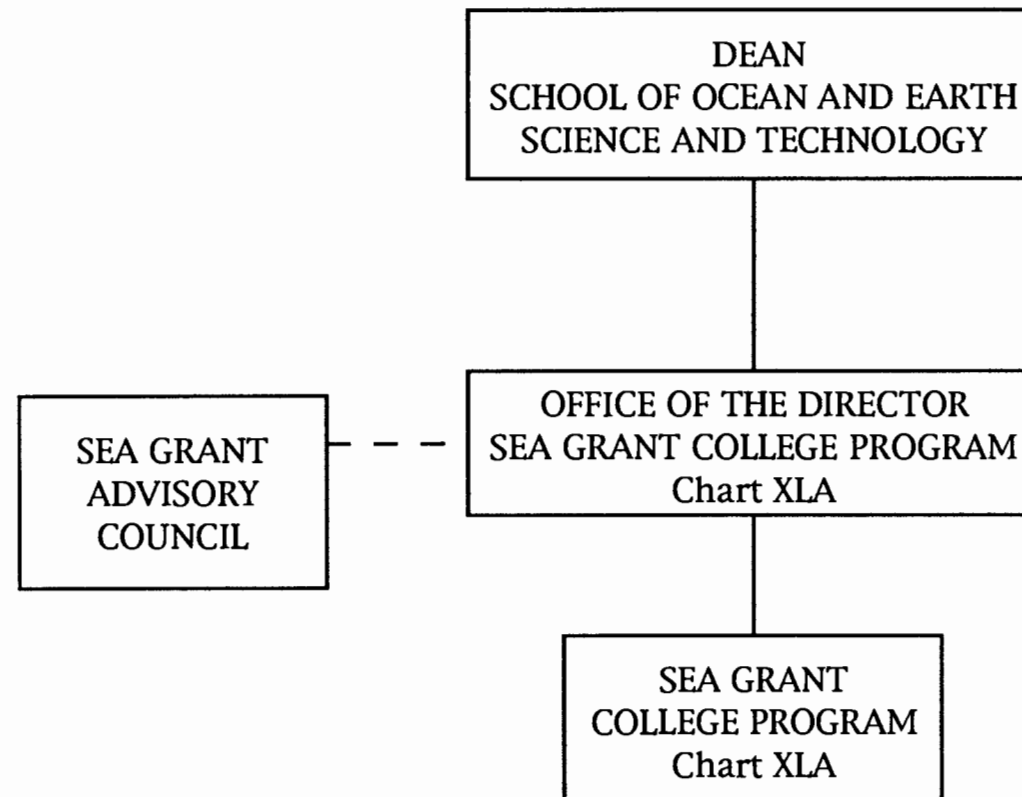


CHART UPDATED
DATE JUN 30 1996

STATE OF HAWAII
UNIVERSITY OF HAWAII
UNIVERSITY OF HAWAII AT MANOA
SCHOOL OF OCEAN AND EARTH
SCIENCE AND TECHNOLOGY

SEA GRANT COLLEGE PROGRAM
POSITION ORGANIZATION CHART

CHART XLA

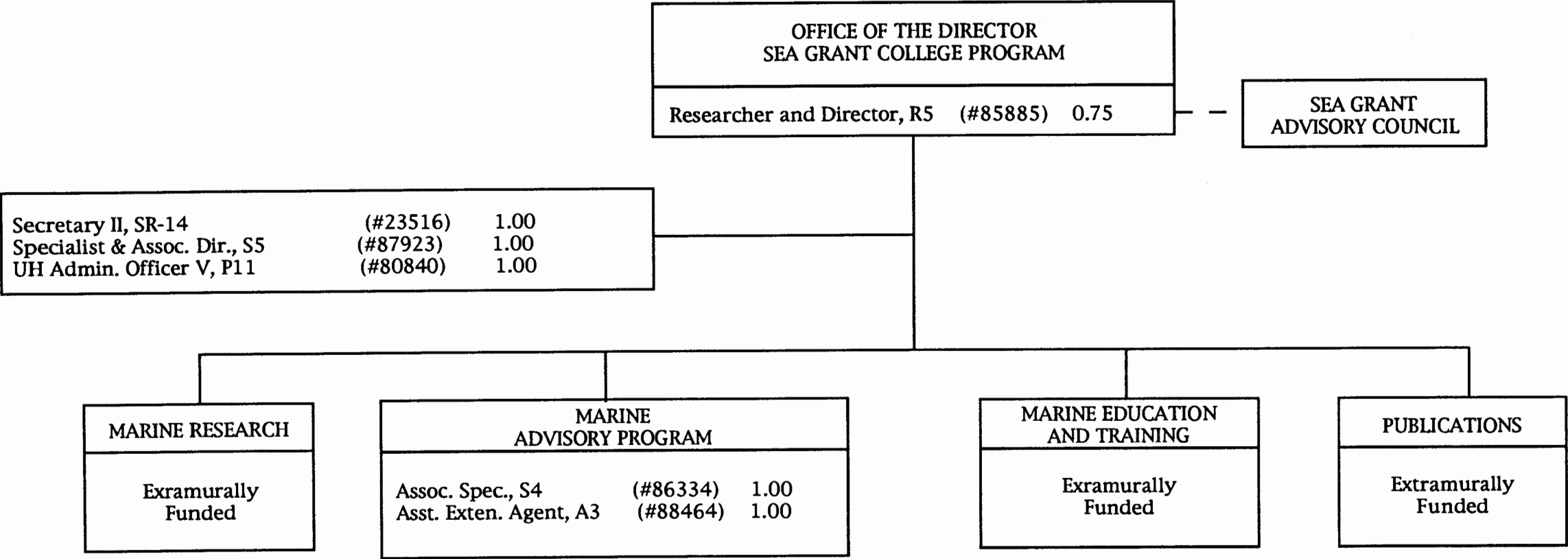


CHART UPDATED
JUN 30 1996
DATE _____