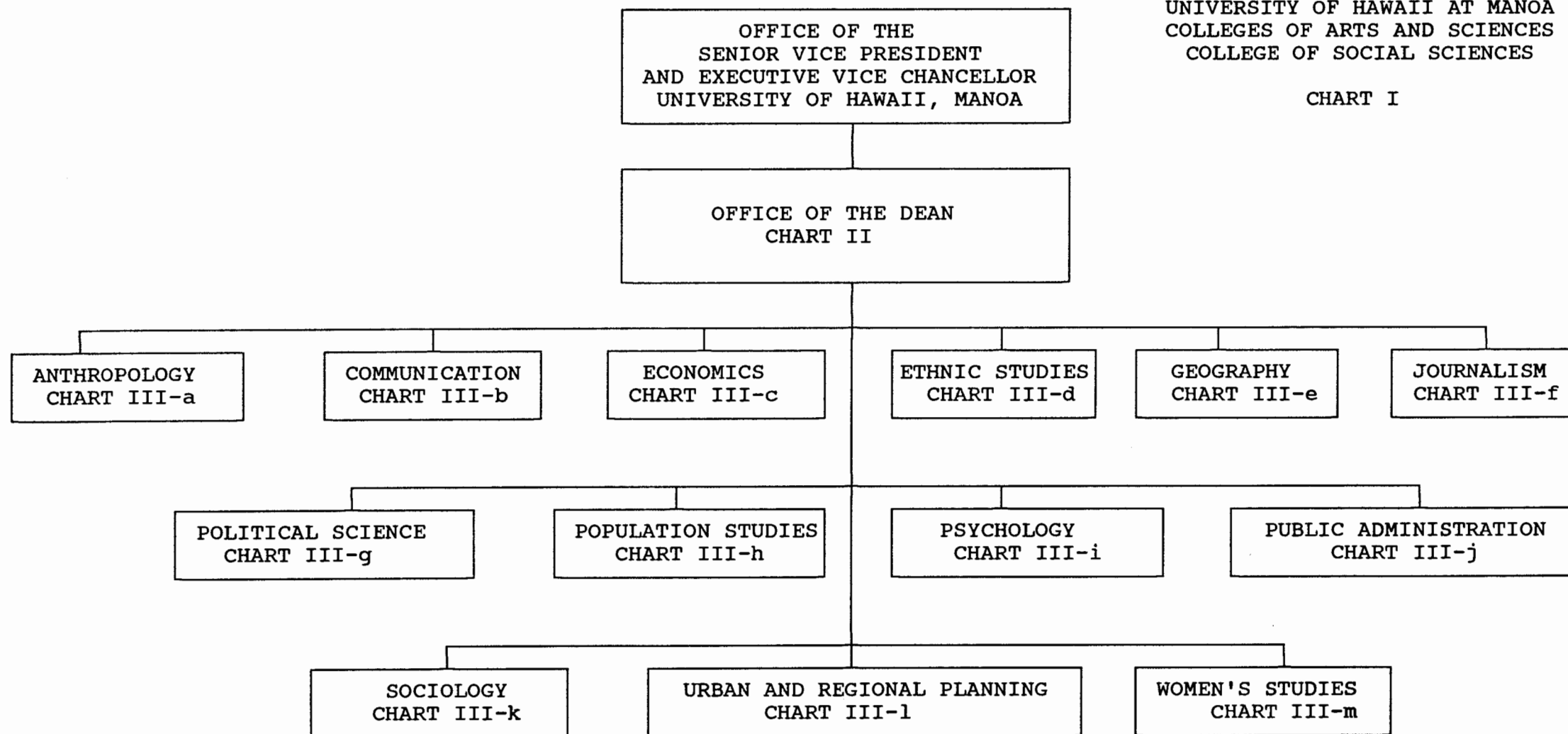


STATE OF HAWAII
UNIVERSITY OF HAWAII
UNIVERSITY OF HAWAII AT MANOA
COLLEGES OF ARTS AND SCIENCES
COLLEGE OF SOCIAL SCIENCES

CHART I



Approved:

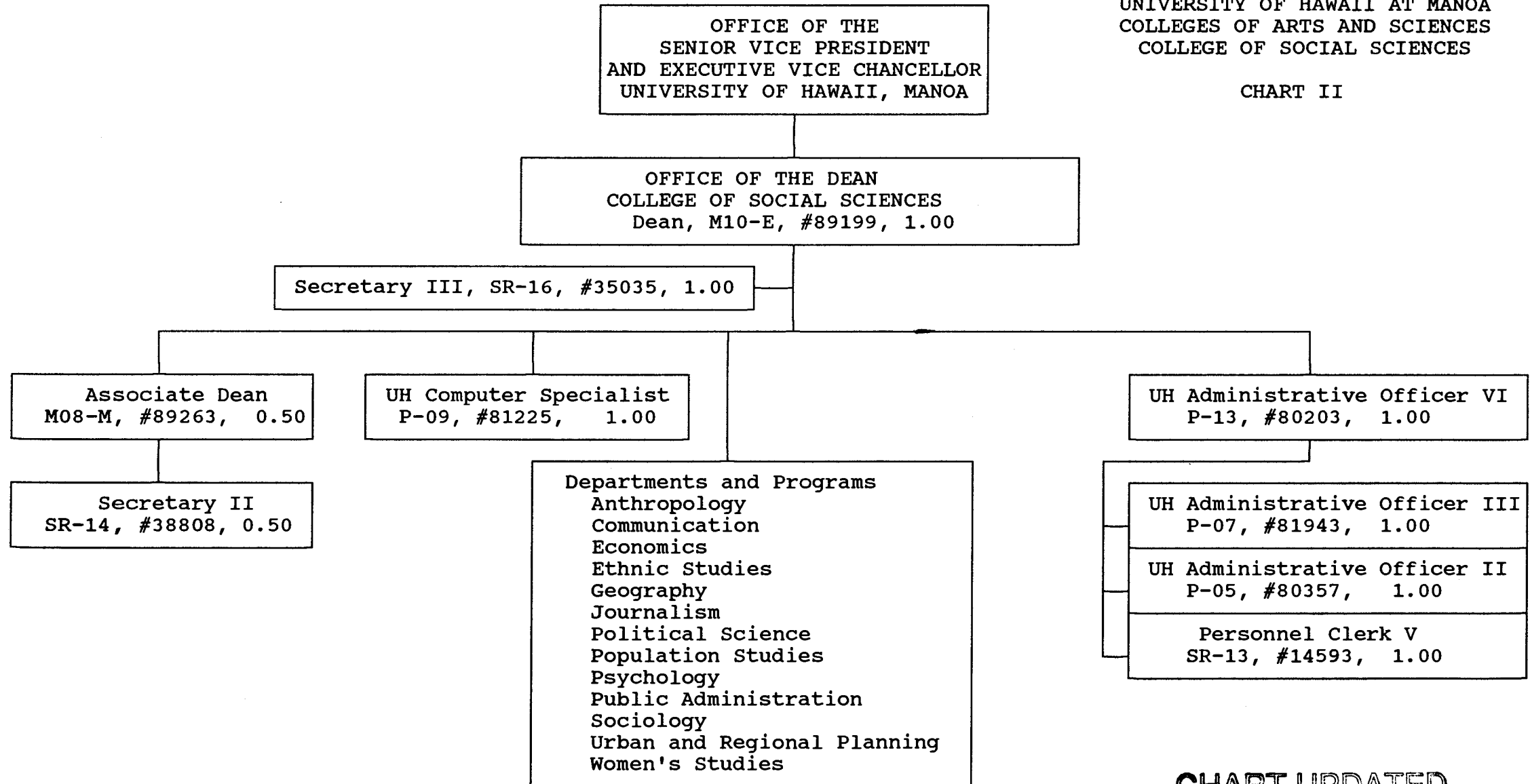
Richard Dubanoski

Richard Dubanoski, Dean
College of Social Sciences
June 30, 1996

CHART UPDATED
DATE JUN 30 1996'

STATE OF HAWAII
UNIVERSITY OF HAWAII
UNIVERSITY OF HAWAII AT MANOA
COLLEGES OF ARTS AND SCIENCES
COLLEGE OF SOCIAL SCIENCES

CHART II



Approved:

Richard Dubanoski
Richard Dubanoski, Dean
College of Social Sciences, June 30, 1996

CHART UPDATED
DATE JUN 30 1996

STATE OF HAWAII
UNIVERSITY OF HAWAII
UNIVERSITY OF HAWAII AT MANOA
COLLEGES OF ARTS AND SCIENCES
COLLEGE OF SOCIAL SCIENCES

CHART III-a

OFFICE OF THE DEAN

DEPARTMENT OF ANTHROPOLOGY

Chair (appointed from faculty positions)

Secretary II, SR-14, #13482 1.00

UH Student Services Specialist II, P-06, #80639 1.00

UH Educational Specialist II, P-06, #81746 1.00

Faculty Positions: 16.00

Full time: #82188, 82195, 82207, 82534, 82638
82779, 82797, 83004, 83358, 83405
83574, 83924, 84206, 84399, 85082
84804

Graduate Assistants: 3.00

#83831, 83275, 88064, 88367
88529, 88591

22.00

Approved:

Richard Dubanoski

Richard Dubanoski, Dean
College of Social Sciences
June 30, 1996

CHART UPDATED
JUN 30 1996
DATE _____

STATE OF HAWAII
UNIVERSITY OF HAWAII
UNIVERSITY OF HAWAII AT MANOA
COLLEGES OF ARTS AND SCIENCES
COLLEGE OF SOCIAL SCIENCES

CHART III-b

OFFICE OF THE DEAN

DEPARTMENT OF COMMUNICATION

Chair (appointed from faculty positions)

Secretary II, SR-14, #14362 1.00

Clerk-Typist II, SR-08, #48445 1.00

Faculty Positions: 12.00

Full time: #82279, 82280, 82602, 82871, 82905
82982, 83302, 83756, 84217, 84505
88169, 88619

Graduate Assistants: 3.50

#85507, 88210, 88506, 88534, 88581
88607, 88681

17.50

Approved:

Richard Dubanoski

Richard Dubanoski, Dean
College of Social Sciences
June 30, 1996

CHART UPDATED
DATE JUN 30 1996

STATE OF HAWAII
UNIVERSITY OF HAWAII
UNIVERSITY OF HAWAII AT MANOA
COLLEGES OF ARTS AND SCIENCES
COLLEGE OF SOCIAL SCIENCES

CHART III-c

OFFICE OF THE DEAN

DEPARTMENT OF ECONOMICS

Chair (appointed from faculty positions)

Secretary II, SR-14, #15351 1.00

Clerk-Stenographer III, SR-11, #14360 1.00

Faculty Positions: 18.00

Full time: #82286, 82679, 82777, 82838, 83023
83411, 83484, 83748, 83943, 83953
84047, 84054, 84200, 84643, 84815
85027

Part time: #82741, 83611, 83650, 84928

Graduate Assistants: 4.50

#88061, 88175, 88193, 88233, 88248
88262, 88420, 88517, 88631

24.50

Approved:

Richard Dubanoski
Richard Dubanoski, Dean
College of Social Sciences
June 30, 1996

CHART UPDATED
JUN 30 1996
DATE _____

STATE OF HAWAII
UNIVERSITY OF HAWAII
UNIVERSITY OF HAWAII AT MANOA
COLLEGES OF ARTS AND SCIENCES
COLLEGE OF SOCIAL SCIENCES

CHART III-d

OFFICE OF THE DEAN

DEPARTMENT OF ETHNIC STUDIES

Director (appointed from faculty positions)

Secretary II, SR-14, #24006

1.00

Faculty Positions:

Full time: #83195, 85586, 84790, 84805, 84801, 84803, 84807

8.00

Part time: #83191, 84811

9.00

Approved:



Richard Dubanoski, Dean
College of Social Sciences
June 30, 1996

CHART UPDATED
JUN 30 1996
DATE _____

STATE OF HAWAII
UNIVERSITY OF HAWAII
UNIVERSITY OF HAWAII AT MANOA
COLLEGES OF ARTS AND SCIENCES
COLLEGE OF SOCIAL SCIENCES

CHART III-e

OFFICE OF THE DEAN

DEPARTMENT OF GEOGRAPHY

Chair (appointed from faculty positions)

Secretary II, SR-14, #14358 1.00

Clerk-Stenographer II, SR-09, #18580 1.00

UH Educational Specialist II, P-06, #80641 1.00

Faculty Positions: 15.25

Full time: #84917, 82332, 82681, 82708, 83935, 82680, 84791
84209, 84254, 84518, 84565, 84841, 85298, 82328

Part time: #82338, 83522M

Graduate Assistants: 6.00

#88065, 88103, 88110, 88140, 88189
88217, 88232, 88391, 88416, 88446,
84864, 88620

24.25

Approved:

Richard Dubanoski
Richard Dubanoski, Dean
College of Social Sciences
June 30, 1996

CHART UPDATED
DATE JUN 30 1996

STATE OF HAWAII
UNIVERSITY OF HAWAII
UNIVERSITY OF HAWAII AT MANOA
COLLEGES OF ARTS AND SCIENCES
COLLEGE OF SOCIAL SCIENCES

CHART III-f

OFFICE OF THE DEAN

DEPARTMENT OF JOURNALISM

Chair (appointed from faculty positions)

Secretary II, SR-14, #13807

1.00

Faculty Positions:

8.00

Full time: #82500, 82611, 82946, 83458
84115, 84478, 84792, 84809

9.00

Approved:

Richard Dubanoski

Richard Dubanoski, Dean
College of Social Sciences
June 30, 1996

CHART UPDATED

DATE JUN 30 1996

STATE OF HAWAII
UNIVERSITY OF HAWAII
UNIVERSITY OF HAWAII AT MANOA
COLLEGES OF ARTS AND SCIENCES
COLLEGE OF SOCIAL SCIENCES

CHART III-g

OFFICE OF THE DEAN

DEPARTMENT OF POLITICAL SCIENCE

Chair (appointed from faculty positions)

Secretary II, SR-14, #11112 1.00

Clerk-Stenographer II, SR-09, #14363 1.00

Clerk-Stenographer II, SR-09, #21775 1.00

Faculty Positions: 24.00

Full time: #82145, 82278, 82317, 82672, 82823
82913, 83085, 83162, 83194, 83197
83311, 83370, 83621, 83753, 83858
84023, 84042, 84109, 84130, 84234
84556, 84800, 84812

Part time: #83277, 83778, 84059, 88549

Graduate Assistants: 3.50

#88076, 88090, 88238, 88336, 88407
88676, 84880

30.50

Approved:

Richard Dubanoski

Richard Dubanoski, Dean
College of Social Sciences
June 30, 1996

CHART UPDATED
DATE JUN 30 1996

STATE OF HAWAII
UNIVERSITY OF HAWAII
UNIVERSITY OF HAWAII AT MANOA
COLLEGES OF ARTS AND SCIENCES
COLLEGE OF SOCIAL SCIENCES

CHART III-h

OFFICE OF THE DEAN

POPULATION STUDIES PROGRAM

Director (appointed from faculty positions)

.00

0.00

Approved:

Richard Dubanoski

Richard Dubanoski, Dean
College of Social Sciences
June 30, 1996

CHART UPDATED
DATE JUN 30 1996

STATE OF HAWAII
UNIVERSITY OF HAWAII
UNIVERSITY OF HAWAII AT MANOA
COLLEGES OF ARTS AND SCIENCES
COLLEGE OF SOCIAL SCIENCES

CHART III-i

OFFICE OF THE DEAN

DEPARTMENT OF PSYCHOLOGY

Chair (appointed from faculty positions)
Director, Clinical Studies (appointed from faculty positions)

Secretary II, SR-14, #12856	1.00
Clerk-Stenographer III, SR-11, #19052	1.00
Clerk-Stenographer II, SR-09, #21971	1.00
UH Educational Specialist III, P-09, #80638	1.00

Faculty Positions: 25.75

Full time: #82198, 82294, 82398, 82412, 82471, 82537, 82564
82615, 82916, 83092, 83110, 83507, 83626, 84131
84225, 84346, 84416, 84491, 84497, 84827, 84866
85075, 88005

Part time: #82192, 83799, 84319, 84861M, 84810, 83498

Graduate Assistants: 3.75
#85148, 88046, 88060, 88252, 88320, 88362, 88511
88559

33.50

Approved:

Richard Dubanoski

Richard Dubanoski, Dean
College of Social Sciences
June 30, 1996

CHART UPDATED
DATE JUN 30 1996

STATE OF HAWAII
UNIVERSITY OF HAWAII
UNIVERSITY OF HAWAII AT MANOA
COLLEGES OF ARTS AND SCIENCES
COLLEGE OF SOCIAL SCIENCES

CHART III-j

OFFICE OF THE DEAN

PUBLIC ADMINISTRATION PROGRAM

Director (appointed from faculty positions)

Faculty Positions:

4.00

Full time: #84788, 84789, 84797, 84798

4.00

Approved:

Richard Dubanoski

Richard Dubanoski, Dean
College of Social Sciences
June 30, 1996

CHART UPDATED
DATE JUN 30 1996

STATE OF HAWAII
UNIVERSITY OF HAWAII
UNIVERSITY OF HAWAII AT MANOA
COLLEGES OF ARTS AND SCIENCES
COLLEGE OF SOCIAL SCIENCES

CHART III-k

OFFICE OF THE DEAN

DEPARTMENT OF SOCIOLOGY

Chair (appointed from faculty positions)

Secretary II, SR-14, #13485 1.00

Clerk-Stenographer II, SR-09, #16953 1.00

UH Student Services Specialist II, P-06, #80640 1.00

Faculty Positions: 19.00

Full time: #82097, 82114, 82125, 82204, 82323, 82605
83050, 83164, 83867, 84076, 84121, 84237
84286, 84456, 84502, 84504, 84575, 84616
84642

Graduate Assistants: 5.50

#88008, 88100, 88182, 88208, 88268, 88408
88485, 88498, 88533, 88616, 88392

27.50

Approved:

Richard Dubanoski

Richard Dubanoski, Dean
College of Social Sciences
June 30, 1996

CHART UPDATED
DATE JUN 30 1996

STATE OF HAWAII
UNIVERSITY OF HAWAII
UNIVERSITY OF HAWAII AT MANOA
COLLEGES OF ARTS AND SCIENCES
COLLEGE OF SOCIAL SCIENCES

CHART III-1

OFFICE OF THE DEAN

DEPARTMENT OF URBAN AND REGIONAL PLANNING

Chair (appointed from faculty positions)

Secretary II, SR-14, #15640

1.00

Faculty Positions:

6.00

Full time: #82539, 83624, 84060, 84522, 85736, 82377

7.00

Approved:



Richard Dubanoski, Dean
College of Social Sciences
June 30, 1996

CHART UPDATED
DATE JUN 30 1996

STATE OF HAWAII
UNIVERSITY OF HAWAII
UNIVERSITY OF HAWAII AT MANOA
COLLEGES OF ARTS AND SCIENCES
COLLEGE OF SOCIAL SCIENCES

CHART III-m

OFFICE OF THE DEAN

WOMEN'S STUDIES PROGRAM

Director (appointed from faculty positions)

Secretary II, SR-14, #31328

.75

Faculty Positions:

4.25

Full time: #82870, 86071

Part time: #82318, 84034M, 84057M,
85962, 86070.

5.00

Approved:

Richard Dubanoski

Richard Dubanoski, Dean
College of Social Sciences
June 30, 1996

CHART UPDATED
DATE JUN 30 1996