

Office of the Senior
Vice President for Research and
Dean of the Graduate Division

OFFICE OF THE DEAN*
CHART II

STATE OF HAWAII
UNIVERSITY OF HAWAII
UNIVERSITY OF HAWAII AT MANOA
COLLEGE OF TROPICAL AGRICULTURE & HUMAN RESOURCES

ORGANIZATIONAL CHART
CHART I

PUBLICATIONS AND INFORMATION
CHART IV

OFFICE OF ADMINISTRATIVE SERVICES
CHART V

INTERNATIONAL PROGRAMS
CHART VI

OFFICE OF PLANNING AND MANAGEMENT SYSTEMS
CHART VII

OFFICE OF THE ASSOCIATE DEAN
ACADEMIC AFFAIRS
CHART VIII

OFFICE OF THE DIRECTOR
HAWAII INSTITUTE OF TROPICAL AGRICULTURE
AND HUMAN RESOURCES
CHART IX

INSTRUCTION PROGRAM
CHART A, Y

EXTENSION
PROGRAMS
CHART P, Q, X

COUNTY
ADMINISTRATION
CHART III

ENVIRONMENTAL BIOCHEMISTRY
BIOSYSTEMS ENGINEERING
AGRICULTURAL & RESOURCES ECONOMICS
AGRONOMY & SOIL SCIENCE
ANIMAL SCIENCES
PLANT MOLECULAR PHYSIOLOGY
ENTOMOLOGY

CHART B
CHART C
CHART D
CHART E
CHART F
CHART G
CHART H

FOOD SCIENCE & HUMAN NUTRITION
HORTICULTURE
PLANT PATHOLOGY
HUMAN RESOURCES

CHART I
CHART J
CHART K
CHART L

CHART UPDATED
DATE JUL - 1 1996

* & Director of Cooperative Science & Education

STATE OF HAWAII
UNIVERSITY OF HAWAII
UNIVERSITY OF HAWAII AT MANOA
COLLEGE OF TROPICAL AGRICULTURE & HUMAN RESOURCES
OFFICE OF THE DEAN
CHART II

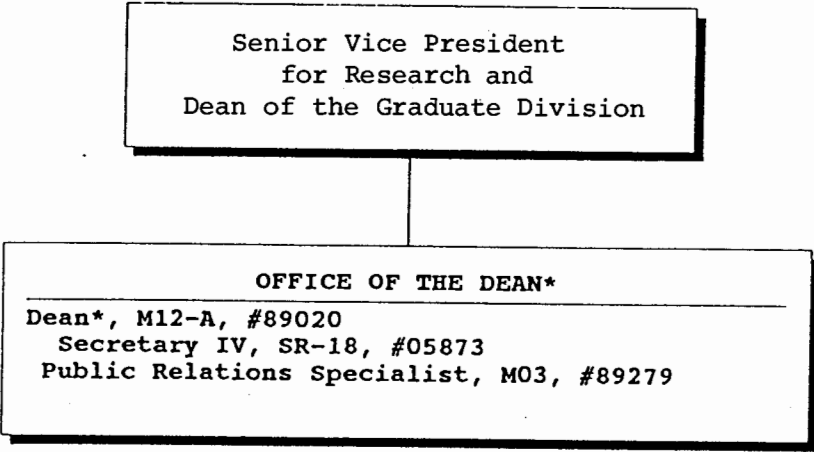


CHART UPDATED
DATE JUL - 1 1996

* & Director of Cooperative Science & Education

STATE OF HAWAII
UNIVERSITY OF HAWAII
UNIVERSITY OF HAWAII AT MANOA
COLLEGE OF TROPICAL AGRICULTURE & HUMAN RESOURCES

HAWAII INSTITUTE OF TROPICAL AGRICULTURE & HUMAN RESOURCES
COUNTY ADMINISTRATION
CHART III

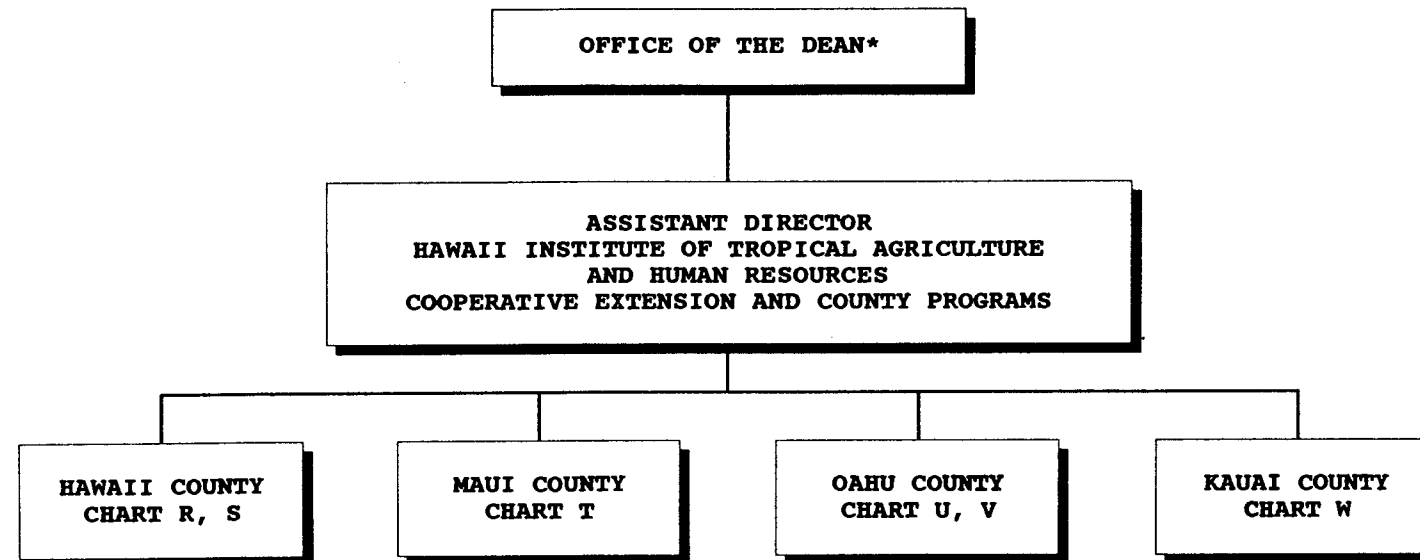


CHART UPDATED
JUN 30 1996
DATE _____

*& Director of Cooperative Science & Education

STATE OF HAWAII
UNIVERSITY OF HAWAII
UNIVERSITY OF HAWAII AT MANOA
COLLEGE OF TROPICAL AGRICULTURE & HUMAN RESOURCES

OFFICE OF PUBLICATIONS AND INFORMATION
CHART IV

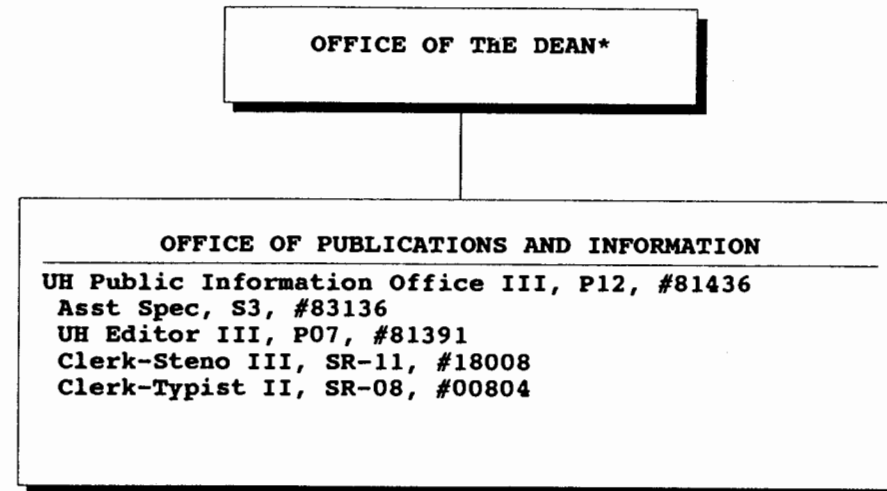


CHART UPDATED
JUN 30 1996
DATE _____

* & Director of Cooperative Science & Education

STATE OF HAWAII
UNIVERSITY OF HAWAII
UNIVERSITY OF HAWAII AT MANOA
COLLEGE OF TROPICAL AGRICULTURE & HUMAN RESOURCES

OFFICE OF ADMINISTRATIVE SERVICES
CHART V

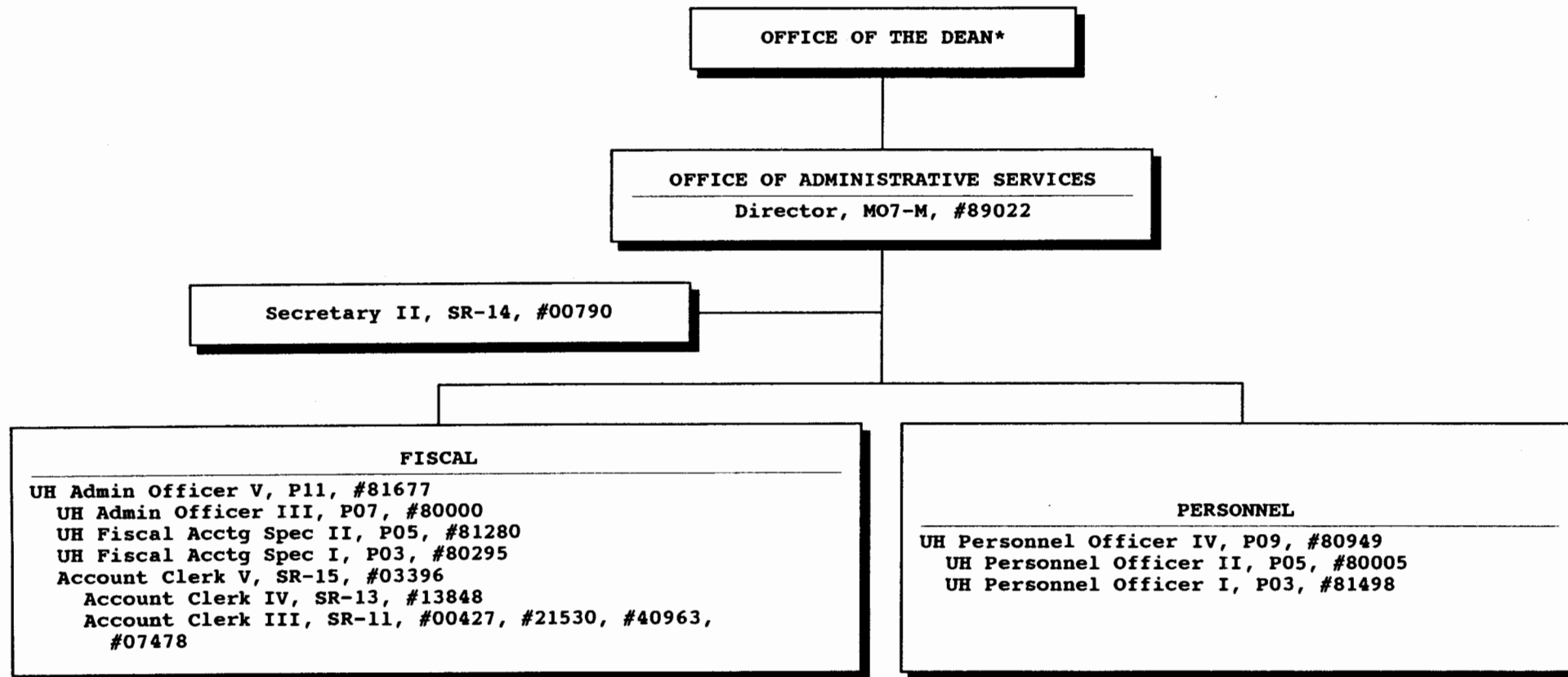


CHART UPDATED
DATE JUN 30 1996

* & Director of Cooperative Science & Education

STATE OF HAWAII
UNIVERSITY OF HAWAII
UNIVERSITY OF HAWAII AT MANOA
COLLEGE OF TROPICAL AGRICULTURE & HUMAN RESOURCES

OFFICE OF INTERNATIONAL PROGRAMS
CHART VI

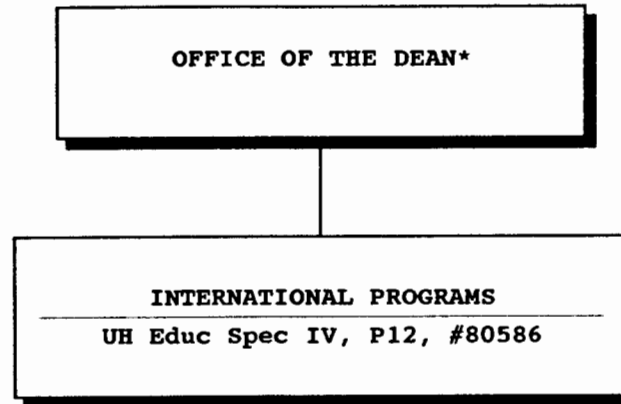


CHART UPDATED
DATE JUN 30 1996

*& Director of Cooperative Science & Education

STATE OF HAWAII
UNIVERSITY OF HAWAII
UNIVERSITY OF HAWAII AT MANOA
COLLEGE OF TROPICAL AGRICULTURE & HUMAN RESOURCES

OFFICE OF PLANNING AND MANAGEMENT SYSTEMS
CHART VII

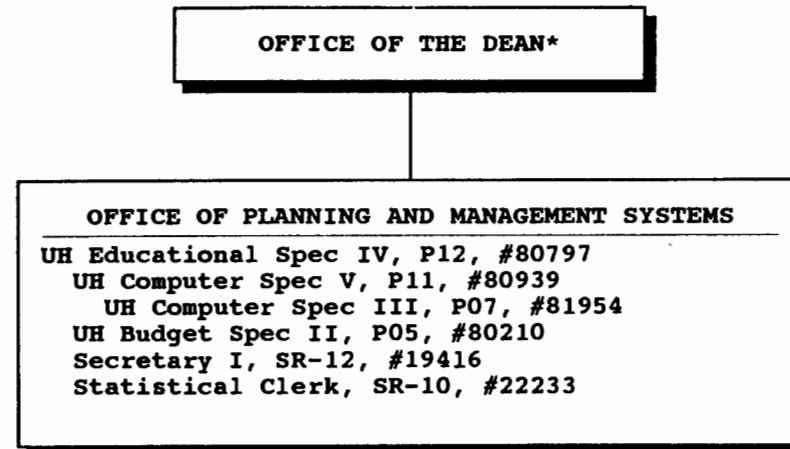


CHART UPDATED
DATE JUN 30 1996

* & Director of Cooperative Science & Education

STATE OF HAWAII
UNIVERSITY OF HAWAII
UNIVERSITY OF HAWAII AT MANOA
COLLEGE OF TROPICAL AGRICULTURE & HUMAN RESOURCES

OFFICE OF THE ASSOCIATE DEAN, ACADEMIC AFFAIRS
CHART VIII

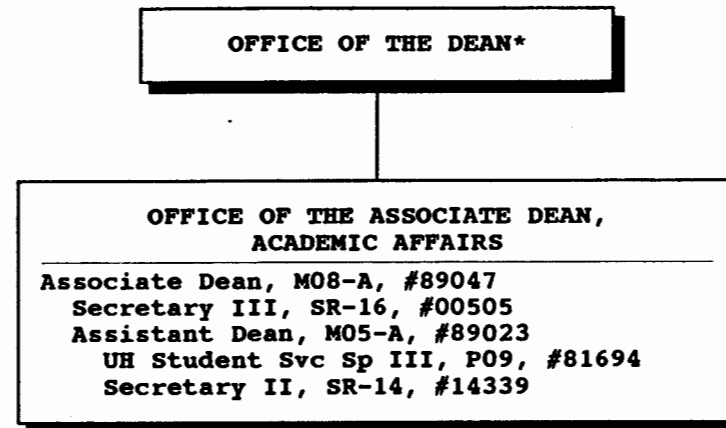


CHART UPDATED
DATE JUN 30 1996

* & Director of Cooperative Science & Education

STATE OF HAWAII
UNIVERSITY OF HAWAII
UNIVERSITY OF HAWAII AT MANOA
COLLEGE TROPICAL AGRICULTURE & HUMAN RESOURCES

OFFICE OF THE DIRECTOR, HITAHR
CHART IX

OFFICE OF THE DEAN*

OFFICE OF THE DIRECTOR
HAWAII INSTITUTE OF TROPICAL AGRICULTURE & HUMAN RESOURCES

Director, HITAHR, M11-A, #89124
Secretary III, SR-16, #00425
Clerk-Steno III, SR-11, #03397 (.50)
Clerk-Typist II, SR-08, #42680
Asst Dir, HITAHR, (Agriculture & Applied Behavioral Sciences
Research), M05-A, #89186
Secretary II, SR-14, #22831
Asst Dir, HITAHR, (Agriculture & Resource Development),
M05-A, #89017
Secretary II, SR-14, #22932
Asst Dir, HITAHR, (Cooperative Extension and County Programs),
M05-A, #89069
Asst Extension Agent, A-3, #85476
Clerk-Typist II, SR-08, #17592
Secretary II, SR-14, #00789

CHART UPDATED
DATE JUN 30 1996

* & Director of Cooperative Science & Education

STATE OF HAWAII
UNIVERSITY OF HAWAII
UNIVERSITY OF HAWAII AT MANOA
COLLEGE OF TROPICAL AGRICULTURE & HUMAN RESOURCES

PEARL CITY URBAN GARDEN CENTER
POSITION ORGANIZATION CHART: A

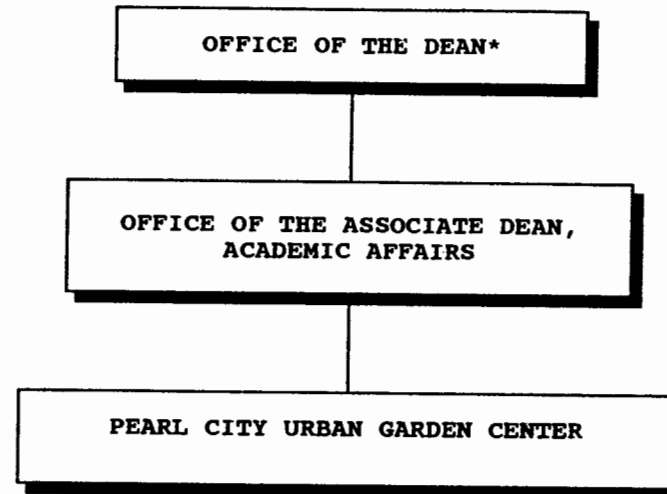


CHART UPDATED
DATE JUN 30 1996

*& Director of Cooperative Science & Education

STATE OF HAWAII
UNIVERSITY OF HAWAII
UNIVERSITY OF HAWAII AT MANOA
COLLEGE OF TROPICAL AGRICULTURE & HUMAN RESOURCES

DEPARTMENT OF ENVIRONMENTAL BIOCHEMISTRY
POSITION ORGANIZATION CHART: B

OFFICE OF THE DEAN*

DEPARTMENT OF ENVIRONMENTAL BIOCHEMISTRY
Chairperson (Appointed from among faculty positions)

Secretary II, SR-14, #14758
Clerk-Typist II, SR-08, #42424

CHART UPDATED
DATE JUN 30 1996

RESEARCH

Research Positions (3.60)
Researcher, R5, #84325, #82976
Assoc Researcher, R4, #83177, #83811
Asst Researcher, R3, #83034
Specialist, S5, #82238
UH Res Assoc V, P09, #80323, #81326
UH Res Assoc IV, P07, #80324 (.95)
UH Res Assoc III, P05, #80269
UH Res Assoc II, P03, #80267 (.50),
#80266, #80265 (.42)

EXTENSION

Extension Positions (2.10)
Researcher, R5, #82976
Asst Researcher, R3, #83034
Specialist, S5, #82238
Assoc Specialist, S4, #84006
UH Educational Spec III, P09, #80250
UH Educational Spec II, P06, #80980
UH Res Assoc IV, P07, #80324 (.05)
UH Res Assoc III, P05, #81311, #81313,
#81325 (.58)

INSTRUCTION

Instruction Positions (1.30)
Researcher, R5, #84235, #82976
Assoc Researcher, R4, #83177, #83811
Asst Researcher, R3, #83034
Assoc Professor, I4R, #82027

* & Director of Cooperative Science & Education

STATE OF HAWAII
 UNIVERSITY OF HAWAII
 UNIVERSITY OF HAWAII AT MANOA
 COLLEGE OF TROPICAL AGRICULTURE & HUMAN RESOURCES

DEPARTMENT OF BIOSYSTEMS ENGINEERING
 POSITION ORGANIZATION CHART: C

OFFICE OF THE DEAN*

DEPARTMENT OF BIOSYSTEMS ENGINEERING
 Chairperson (Appointed from among faculty positions)

Secretary II, SR-14, #12960

CHART UPDATED
 DATE JUN 30 1996

RESEARCH

Research Positions (3.75)
 Researcher, R5, #83399, #84477
 #84600, #84631, #82848
 Assoc Researcher, R4, #83022, #84193
 Asst Professor, I3R, #82919
 Graduate Assistant, GA-R, #88219 (.50)
 UH Mechanical Engineer I, P-12,
 #80784 (.75)
 Agr Eqp Dev Wkg Supv, WB-13, #05729
 Agr Lab Tech I, WB-12, #05730

EXTENSION

Extension Positions (1.75)
 Researcher, R5, #83399, #84477,
 #84600, #84631
 Assoc Researcher, R4, #84193
 Specialist, S5, #82758
 UH Mechanical Engineer I, P-12,
 #80784 (.25)

INSTRUCTION

Instruction Positions (1.50)
 Researcher, R5, #83399, #84477,
 #84600, #84631, #82848
 Assoc Researcher, R4, #83022, #84193
 Specialist, S5, #82758
 Asst Professor, I3R, #82919
 Graduate Assistant, GA, #88630 (.50)

* & Director of Cooperative Science & Education

STATE OF HAWAII
 UNIVERSITY OF HAWAII
 UNIVERSITY OF HAWAII AT MANOA
 COLLEGE OF TROPICAL AGRICULTURE & HUMAN RESOURCES
 DEPARTMENT OF AGRICULTURAL & RESOURCE ECONOMICS
 POSITION ORGANIZATION CHART: D

OFFICE OF THE DEAN*

DEPARTMENT OF AGRICULTURAL & RESOURCE ECONOMICS
 Chairperson (Appointed from among faculty positions)

Secretary II, SR-14, #07872
 Acct Clerk II, SR-08, #00795

CHART UPDATED
 DATE JUN 30 1996

RESEARCH

Research Positions: (6.75)
 Researcher, R5, #84915, #84114, #84128,
 #83184, #84120, #82772
 Assoc Researcher, R4, #84216, #83012
 Asst Researcher, R3, #83921, #84449
 Specialist, S5, #84872, #82107
 Assoc Specialist, S4, #82554
 Professor, I5R, #84627
 Assoc Professor, I4R, #84928
 Graduate Assistant
 GA-R, #88494 (.50)
 GA-R, #88431 (.50)

EXTENSION

Extension Positions: (4.70)
 Researcher, R5, #85885, #84128,
 #83184, #84120
 Assoc Researcher, R4, #84216
 Asst Researcher, R3, #84449, #84552
 Assoc Specialist, S4, #82554, #83515
 Assoc Professor, I4R, #84928
 Specialist, S5, #84872, #82107, #82058

INSTRUCTION

Instructional Positions: (2.05)
 Researcher, R5, #84915, #84114, #85885,
 #82772, #84128, #83184
 Assoc Researcher, R4, #84216, #83012
 Asst Researcher, R3, #82732, #83921,
 #84449
 Specialist, S5, #84872, #82107, #82058
 Assoc Specialist, S4, #82554
 Professor, I5R, #84627
 Assoc Professor, I4R, #84928

* & Director of Cooperative Science & Education

STATE OF HAWAII
UNIVERSITY OF HAWAII
UNIVERSITY OF HAWAII AT MANOA
COLLEGE OF TROPICAL AGRICULTURE & HUMAN RESOURCES

DEPARTMENT OF AGRONOMY & SOIL SCIENCE
POSITION ORGANIZATION CHART: E

OFFICE OF THE DEAN*

DEPARTMENT OF AGRONOMY & SOIL SCIENCE
Chairperson (Appointed from among faculty positions)

Secretary II, SR-14, #05838
Clerk-Steno III, SR-11, #03397 (.50)
Clerk-Typist II, SR-08, #42681

CHART UPDATED
DATE JUN 30 1996

RESEARCH

Research Positions: (7.45)
Researcher, R5, #82598, #84052, #82792
#84171, #84408, #82127, #83938,
#83046, #83260, #82516
Assoc Researcher, R4, #83117, #83149,
#84420
Asst Researcher, R3, #83629, #84080
Asst Specialist, S3, #84488
Agr Res Tech IV, SR-14, #00398

EXTENSION

Extension Positions: (1.80)
Researcher, R5, #82598, #82127,
#83046
Asst Specialist, S3, #83785, #84488

INSTRUCTION

Instructional Positions: (3.10)
Researcher, R5, #82598, #84052, #82792,
#84171, #84408, #82127, #83938,
#83046, #83260
Assoc Researcher, R4, #83117, #83149,
#84420
Asst Researcher, R3, #84080, #83629
Asst Specialist, S3, #83785, #84354,
#84488
Graduate Assistant, GA, #88038,
#88028 (.50)

* & Director of Cooperative Science & Education

STATE OF HAWAII
UNIVERSITY OF HAWAII
UNIVERSITY OF HAWAII AT MANOA
COLLEGE OF TROPICAL AGRICULTURE & HUMAN RESOURCES

DEPARTMENT OF ANIMAL SCIENCES
POSITION ORGANIZATION CHART: F

OFFICE OF THE DEAN*

DEPARTMENT OF ANIMAL SCIENCES
Chairperson (Appointed from among faculty positions)

Secretary II, SR-14, #00801
Clerk-Typist II, SR-08, #00424, #42682

CHART UPDATED
DATE JUN 5 0 1996

RESEARCH
Research Positions: (4.55)
Researcher, R5, #83862, #84454,
#83735, #84049
Assoc Researcher, R4, #82248, #84496,
#84228, #84070
Asst Researcher, R3, #83633
Assoc Specialist, S4, #83830, #84323
Asst Specialist, S4, #83553, #83017
Graduate Assistant, GA-R, #88303 (.50)
UH Res Assoc V, P09, #80410
UH Res Assoc IV, P07, #80392
UH Computer Spec IV, P09, #80037 (.50)
Agr Res Tech VI, SR-18, #00428
Agr Res Tech V, SR-16, #00395, #00396
#00432, #11024
Agr Res Tech IV, SR-14, #00433
Agr Res Tech III, SR-11, #03712, #00418,
#00434
Agr Res Aid II, SR-9, #00410, #00441,
#04481, #04484, #15515
Equipment Operator III, WB-09, #00419

EXTENSION
Extension Positions: (3.20)
Assoc Researcher, R4, #83070, #84496,
#82248
Assoc Specialist, S4, #83830, #84323
Asst Specialist, S3, #83017, #83553
UH Computer Spec IV, P09, #80037 (.50)

INSTRUCTION
Instructional Positions: (2.25)
Researcher, R5, #83862, #84454,
#83735, #84049
Assoc Researcher, R4, #82248, #84496
#84228, #84070
Asst Researcher, R3, #83633
Assoc Specialist, R4, #83830, #84323
Asst Specialist, R3, #83017, #83553
Graduate Assistant, GA, #88165

STATE OF HAWAII
UNIVERSITY OF HAWAII
UNIVERSITY OF HAWAII AT MANOA
COLLEGE OF TROPICAL AGRICULTURE & HUMAN RESOURCES

DEPARTMENT OF PLANT MOLECULAR PHYSIOLOGY
POSITION ORGANIZATION CHART: G

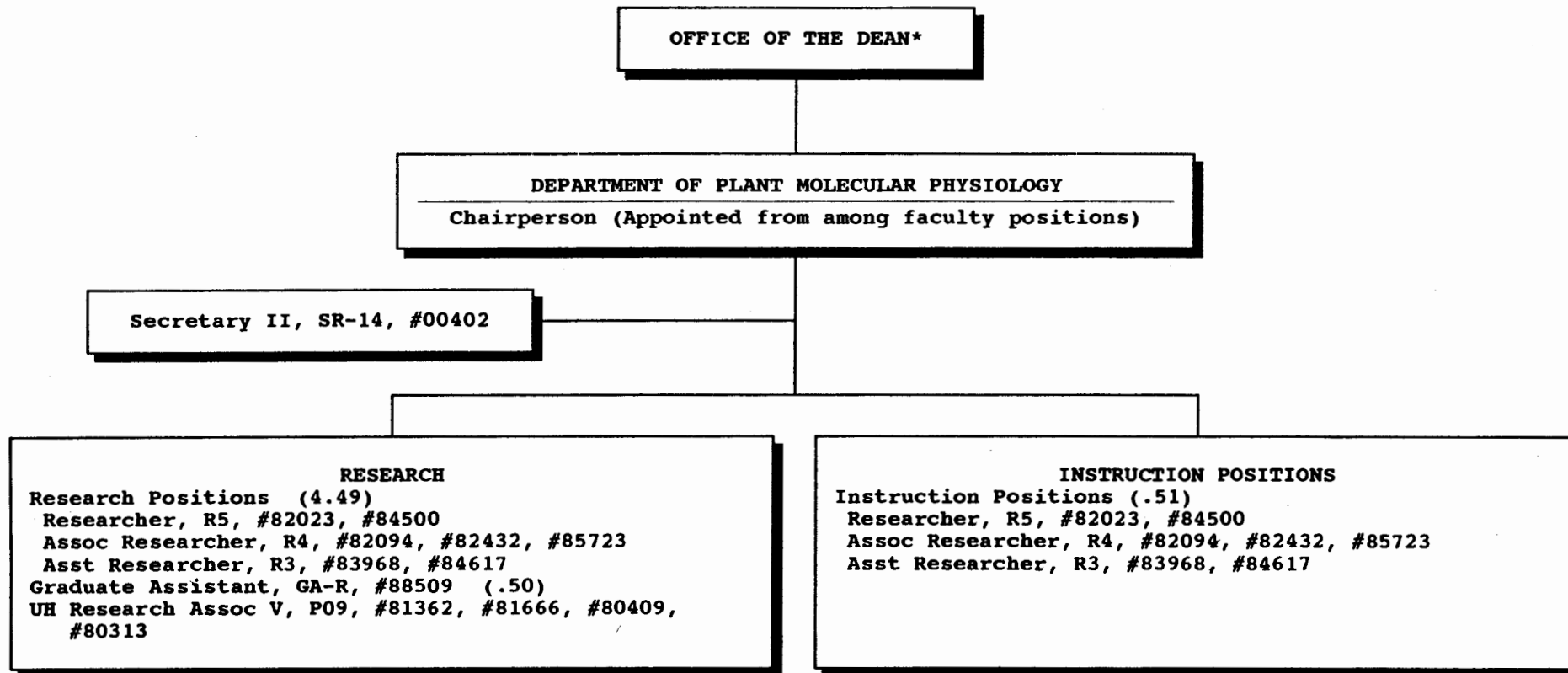


CHART UPDATED
JUN 30 1996
DATE _____

* & Director of Cooperative Science & Education

STATE OF HAWAII
UNIVERSITY OF HAWAII
UNIVERSITY OF HAWAII AT MANOA
COLLEGE OF TROPICAL AGRICULTURE & HUMAN RESOURCES

DEPARTMENT OF ENTOMOLOGY
POSITION ORGANIZATION CHART: H

OFFICE OF THE DEAN*

DEPARTMENT OF ENTOMOLOGY

Chairperson (Appointed from among faculty positions)

Secretary II, SR-14, #07477
Clerk-Steno II, SR-09, #15509

CHART UPDATED
DATE JUN 30 1996

RESEARCH

Research Positions: (4.45)
Researcher, R5, #82139, #82327, #82865,
#82866, #83767, #84316, #84138
Assoc Researcher, R4, #83744, #85510
Specialist, S5, #83320
Graduate Assistant, GA-R, #88576 (.50)
Graduate Assistant, GA-R, #88643 (.50)
UH Research Assoc V, P09, #80388 (.85),
UH Research Assoc IV, P07, #80386 (.70)

EXTENSION

Extension Positions: (1.75)
Researcher, R5, #82139, #82866
Specialist, S5, #83320
Assoc Specialist, S4, #82550
UH Res Assoc V, P09, #80388 (.15)
UH Res Assoc IV, P07, #80386 (.30)

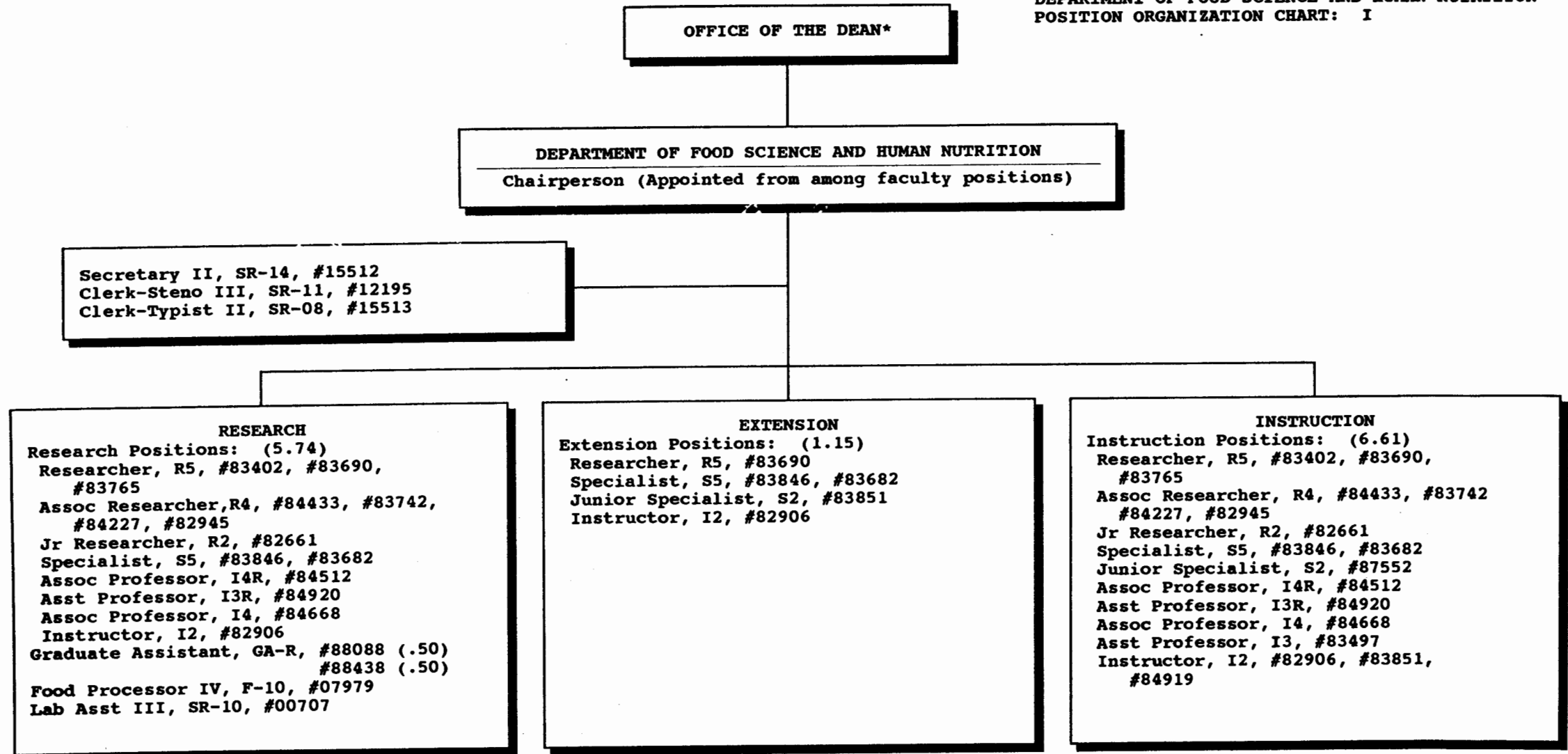
INSTRUCTION

Instructional Positions: (1.80)
Researcher, R5, #82139, #82327, #82865,
#82866, #83767, #84316, #84138
Assoc Researcher, R4, #85510, #83744
Assoc Specialist, S4, #82550
Graduate Assistant, GA, #88181 (.50)
Graduate Assistant, GA, #88486 (.50)

* & Director of Cooperative Science & Education

STATE OF HAWAII
UNIVERSITY OF HAWAII
UNIVERSITY OF HAWAII AT MANOA
COLLEGE OF TROPICAL AGRICULTURE & HUMAN RESOURCES

DEPARTMENT OF FOOD SCIENCE AND HUMAN NUTRITION
POSITION ORGANIZATION CHART: I

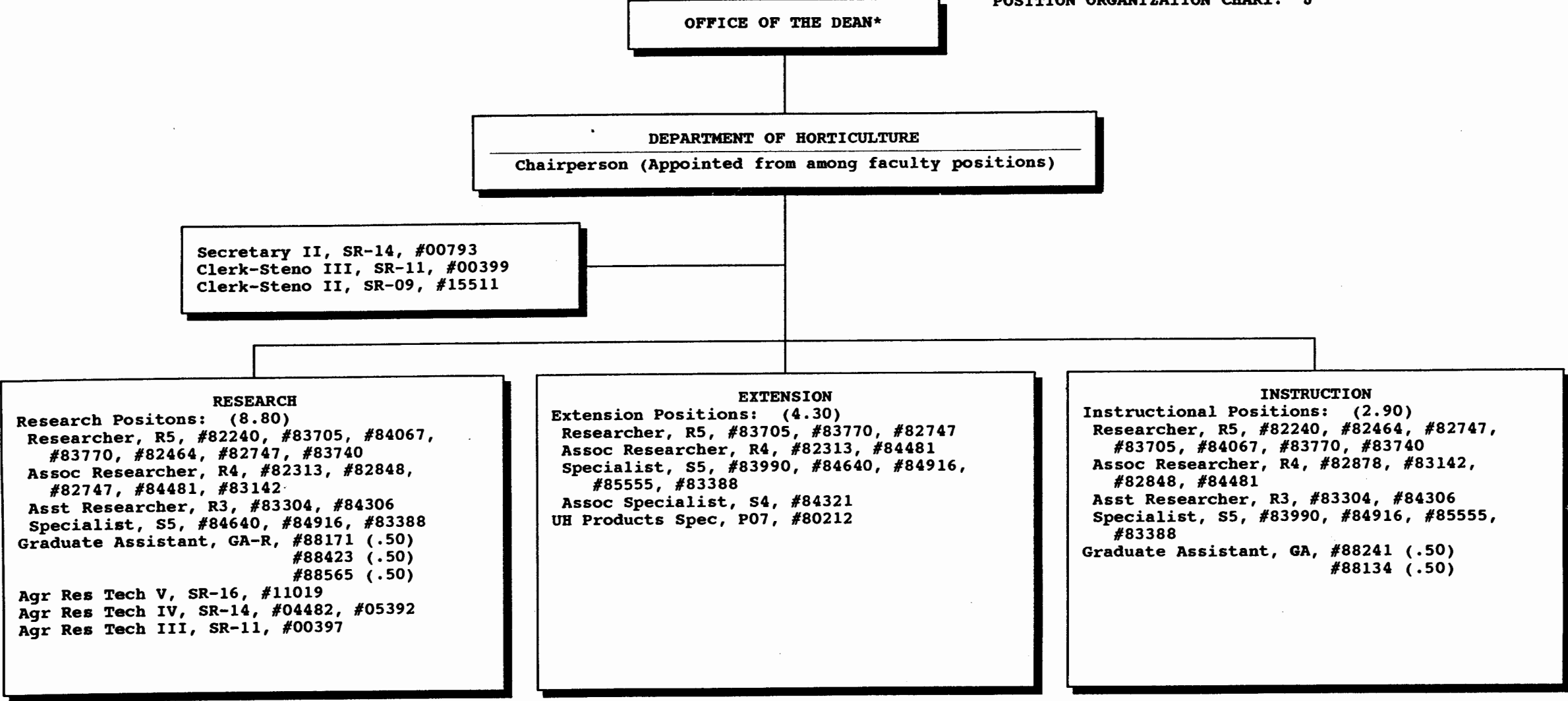


* & Director of Cooperative Science & Education

CHART UPDATED
JUN 30 1996
DATE

STATE OF HAWAII
UNIVERSITY OF HAWAII
UNIVERSITY OF HAWAII AT MANOA
COLLEGE OF TROPICAL AGRICULTURE & HUMAN RESOURCES

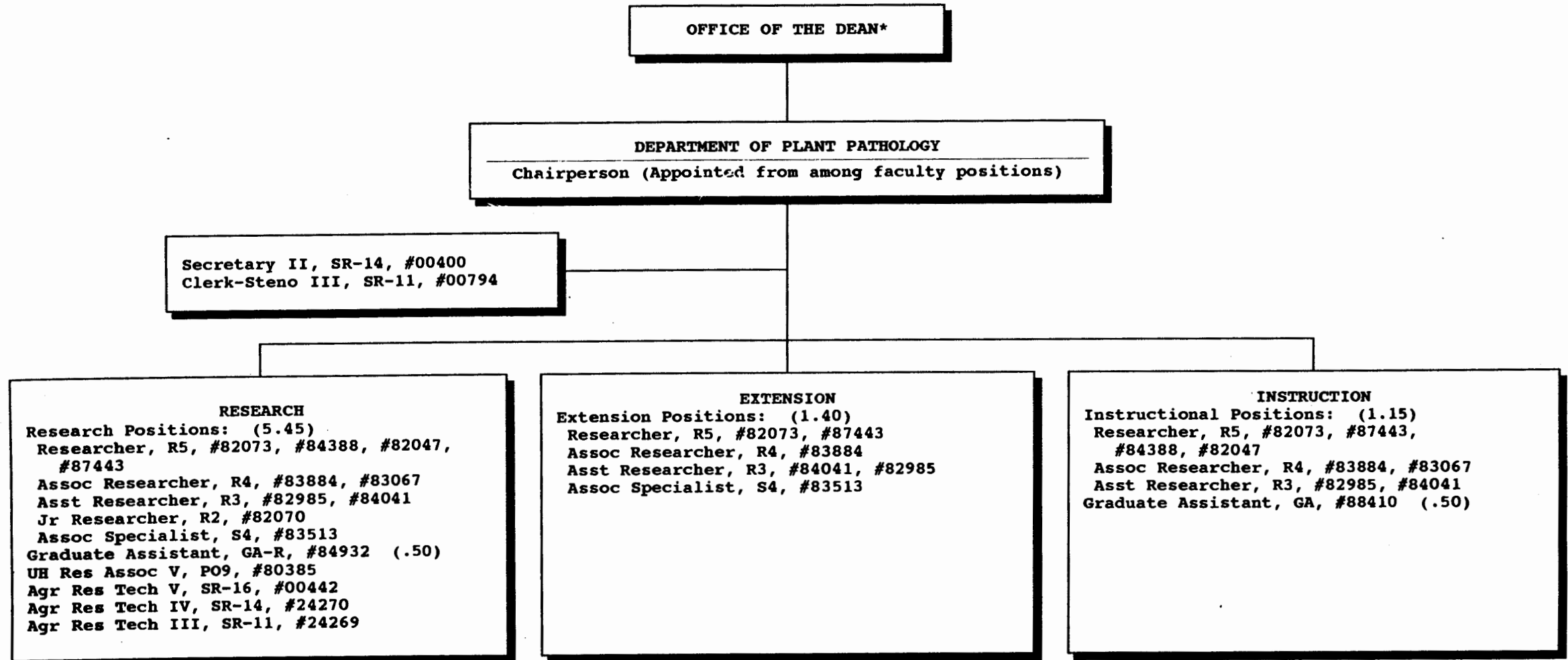
DEPARTMENT OF HORTICULTURE
POSITION ORGANIZATION CHART: J



* & Director of Cooperative Science & Education

STATE OF HAWAII
UNIVERSITY OF HAWAII
UNIVERSITY OF HAWAII AT MANOA
COLLEGE OF TROPICAL AGRICULTURE & HUMAN RESOURCES

DEPARTMENT OF PLANT PATHOLOGY
POSITION ORGANIZATION CHART: K

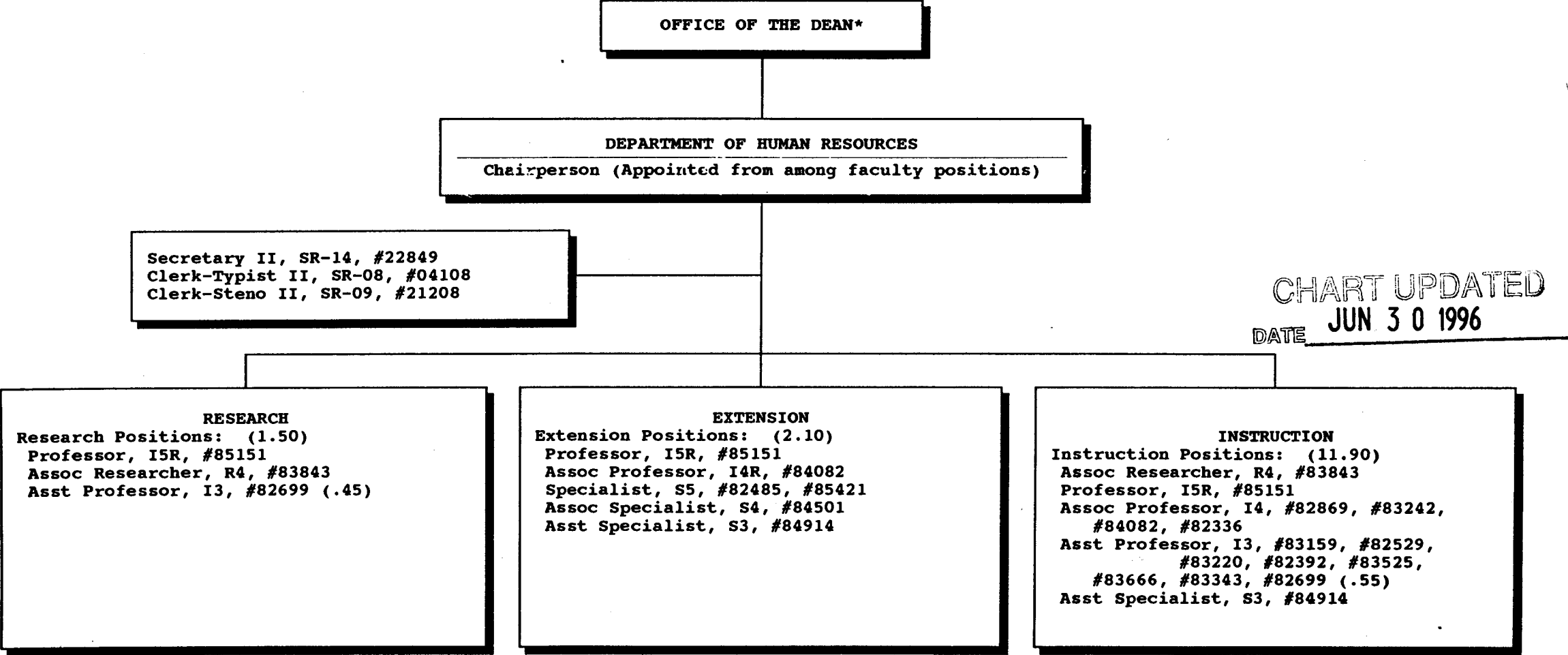


* & Director of Cooperative Science & Education

CHART UPDATED
JUN 30 1996
DATE _____

STATE OF HAWAII
UNIVERSITY OF HAWAII
UNIVERSITY OF HAWAII AT MANOA
COLLEGE OF TROPICAL AGRICULTURE & HUMAN RESOURCES

DEPARTMENT OF HUMAN RESOURCES
POSITION ORGANIZATION CHART: L



* & Director of Cooperative Science & Education

STATE OF HAWAII
UNIVERSITY OF HAWAII
UNIVERSITY OF HAWAII AT MANOA
COLLEGE OF TROPICAL AGRICULTURE & HUMAN RESOURCES

4-H OFFICE
POSITION ORGANIZATION CHART: P

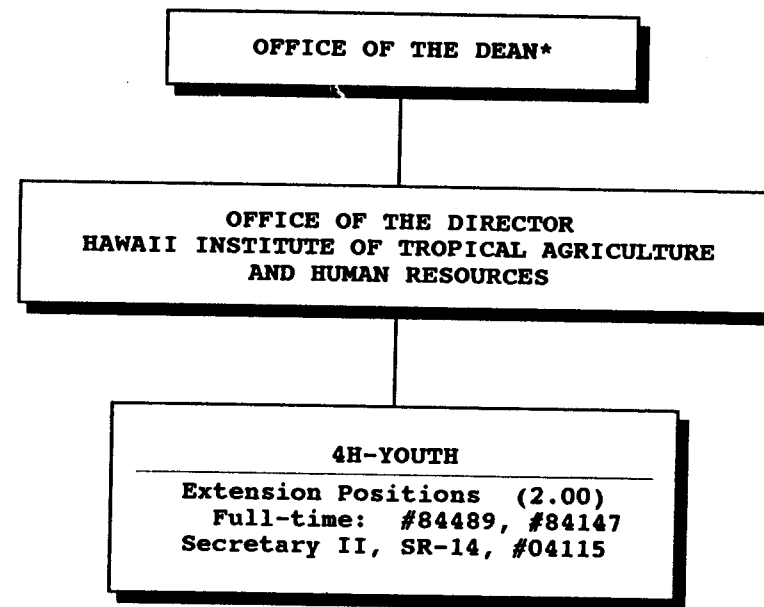


CHART UPDATED
DATE JUN 30 1996

*& Director of Cooperative Science & Education

STATE OF HAWAII
UNIVERSITY OF HAWAII
UNIVERSITY OF HAWAII AT MANOA
COLLEGE OF TROPICAL AGRICULTURE & HUMAN RESOURCES

COMMUNITY RESOURCE DEVELOPMENT
POSITION ORGANIZATION CHART: Q

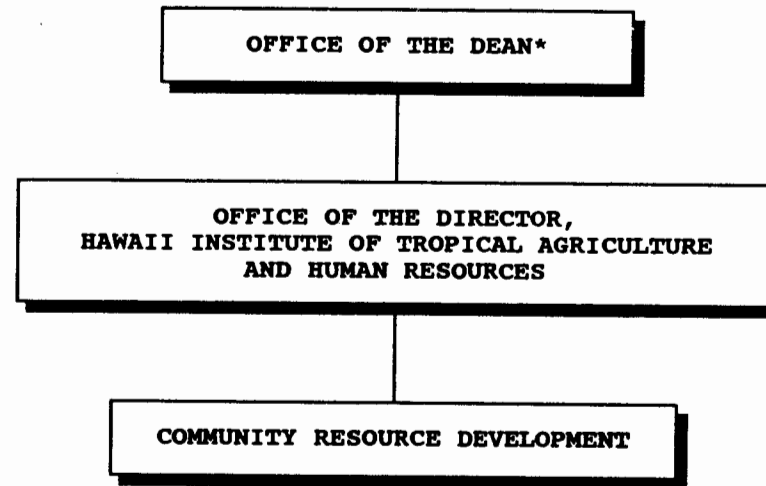


CHART UPDATED
DATE JUN 30 1996

* & Director of Cooperative Science & Education

OFFICE OF THE DEAN*

OFFICE OF THE DIRECTOR
HAWAII INSTITUTE OF TROPICAL AGRICULTURE
AND HUMAN RESOURCES

ASSISTANT DIRECTOR
HAWAII INSTITUTE OF TROPICAL AGRICULTURE
AND HUMAN RESOURCES
COOPERATIVE EXTENSION AND COUNTY PROGRAMS

HAWAII COUNTY
COUNTY ADMINISTRATOR
M04-AM, #89213

Secretary II, SR-14, #13871
Clerk-Steno III, SR-11, #00799,
#00797, #09084, #13870
Clerk-Steno II, SR-09, #00791

RESIDENT FACULTY/STAFF

KAMUELA
Specialist, S5, #84911
Extension Agent, A5, #83736
Asst Extension Agent, A3, #82505

KONA
Specialist, S5, #83459
Extension Agent, A5, #84585, #84610, #83267
Assoc Extension Agent, A4, #84158
Asst Extension Agent, A3, #85542

HILO
Researcher, R5, #82224, #82287, #83255, #84317,
#83073, #83286, #83542
Asst Researcher, R3, #84354
Specialist, S5, #84910
Assoc Specialist, S4, #84912
Asst Specialist, S3, #84007
Extension Agent, A5, #82722
Assoc Extension Agent, A4, #84351, #82951,
#83054, #82373, #85538
Asst Extension Agent, A3, #84297, #84276
UH Res Assoc V, P09, #80270
UH Res Assoc IV, P07, #80310, #81178
UH Res Assoc III, P05, #80320, #80391
UH Res Assoc II, P03, #80311

ADMINISTRATIVE/TECHNICAL
SUPPORT

SEE CHART: S

STATE OF HAWAII
UNIVERSITY OF HAWAII
UNIVERSITY OF HAWAII AT MANOA
COLLEGE OF TROPICAL AGRICULTURE & HUMAN RESOURCES

HAWAII INSTITUTE OF TROPICAL AGRICULTURE
AND HUMAN RESOURCES
HAWAII COUNTY
POSITION ORGANIZATION CHART: R

CHART UPDATED
JUN 30 1996
DATE _____

* & Director of Cooperative Science & Education

OFFICE OF THE DEAN*

OFFICE OF THE DIRECTOR
HAWAII INSTITUTE OF TROPICAL AGRICULTURE
AND HUMAN RESOURCES

ASSISTANT DIRECTOR
HAWAII INSTITUTE OF TROPICAL AGRICULTURE
AND HUMAN RESOURCES
COOPERATIVE EXTENSION AND COUNTY PROGRAMS

HAWAII COUNTY
OFFICE OF THE COUNTY ADMINISTRATOR

ADMINISTRATIVE/TECHNICAL SUPPORT
UH Administrative Officer III
P07, #80252

WEST HAWAII
Agr Res Tech VI, SR-18, #13530

MEALANI
Agr Res Tech V, SR-16, #13534
Agr Res Tech IV, SR-14, #14590
Agr Res Tech III, SR-11, #13709, #44868,
#13531, #12100, #44867

LALAMILO
Agr Res Tech V, SR-16, #13535

HAMAKUA
Agr Res Tech V, SR-16, #13711
Agr Res Tech III, SR-11, #13536

KONA
Agr Res Tech V, SR-16, #00409
Agr Res Tech IV, SR-14, #22912

EAST HAWAII
Agr Res Tech VI, SR-18, #12099

WAIAKEA
Agr Res Tech V, SR-16, #12101, #12094, #14166
Agr Res Tech IV, SR-14, #12767, #12096, #12766,
Agr Res Tech III, SR-11, #17602, #13532, #12098,
#15497, #14168
Building Maintenance Worker I, WB-09, #12095

VOLCANO
Agr Res Tech V, SR-16, #13206
Agr Res Tech IV, SR-14, #12097

MALAMA-KI
Agr Res Tech V, SR-16, #13205
Agr Res Tech III, SR-11, #12765

STATE OF HAWAII
UNIVERSITY OF HAWAII
UNIVERSITY OF HAWAII AT MANOA
COLLEGE OF TROPICAL AGRICULTURE AND HUMAN RESOURCES

HAWAII INSTITUTE OF TROPICAL AGRICULTURE
AND HUMAN RESOURCES
HAWAII COUNTY - TECHNICAL SUPPORT
POSITION ORGANIZATION CHART: S

CHART UPDATED
DATE JUN 30 1996

* & Director of Cooperative Science & Education

STATE OF HAWAII
UNIVERSITY OF HAWAII
UNIVERSITY OF HAWAII AT MANOA
COLLEGE OF TROPICAL AGRICULTURE & HUMAN RESOURCES

HAWAII INSTITUTE OF TROPICAL AGRICULTURE
AND HUMAN RESOURCES
MAUI COUNTY
POSITION ORGANIZATION CHART: T

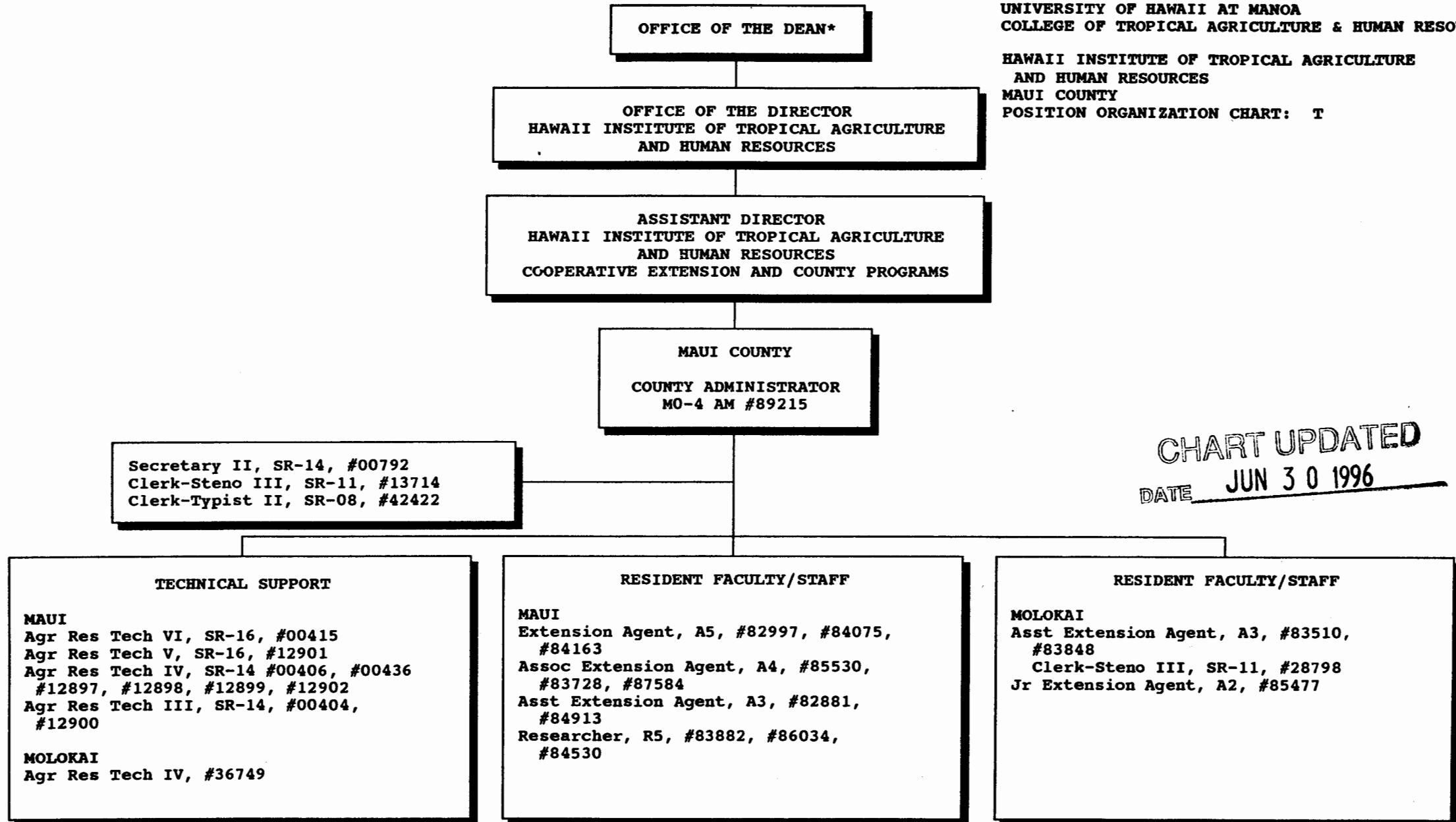
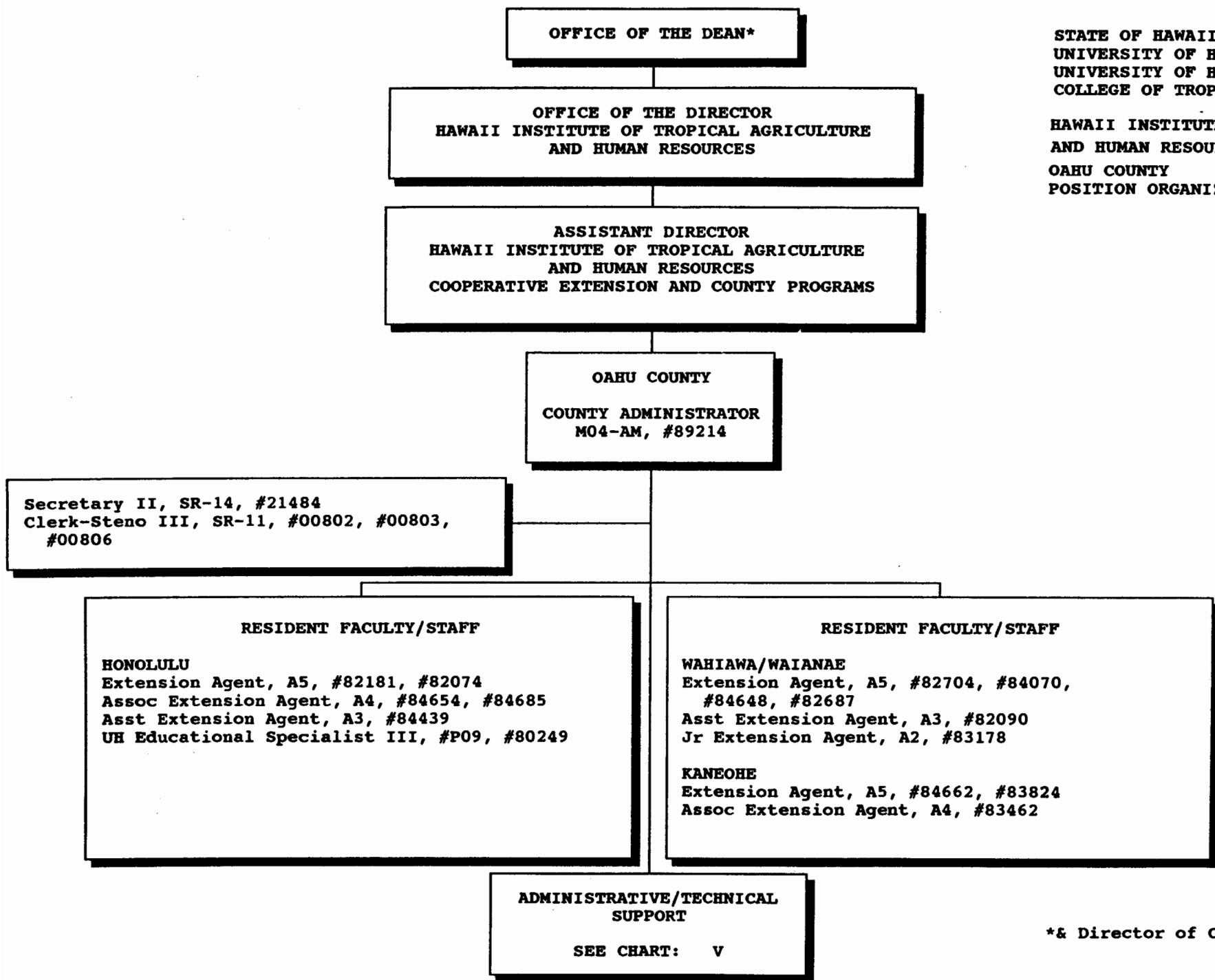


CHART UPDATED
DATE JUN 30 1996



STATE OF HAWAII
UNIVERSITY OF HAWAII
UNIVERSITY OF HAWAII AT MANOA
COLLEGE OF TROPICAL AGRICULTURE & HUMAN RESOURCES

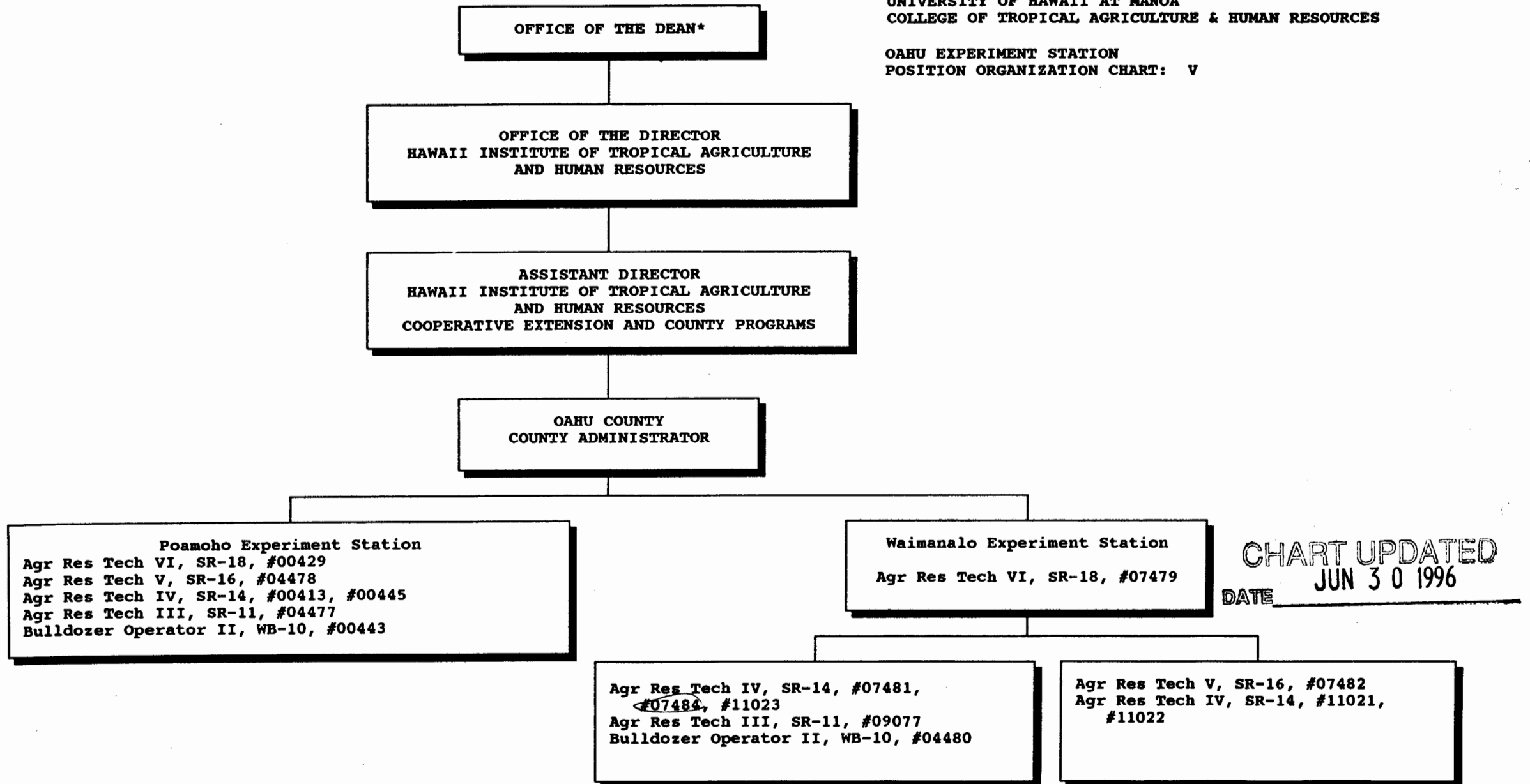
HAWAII INSTITUTE OF TROPICAL AGRICULTURE
AND HUMAN RESOURCES
OAHU COUNTY
POSITION ORGANIZATION CHART: U

CHART UPDATED
DATE JUN 30 1996

* & Director of Cooperative Science & Education

STATE OF HAWAII
UNIVERSITY OF HAWAII
UNIVERSITY OF HAWAII AT MANOA
COLLEGE OF TROPICAL AGRICULTURE & HUMAN RESOURCES

OAHU EXPERIMENT STATION
POSITION ORGANIZATION CHART: V



* & Director of Cooperative Science & Education

OFFICE OF THE DEAN*

OFFICE OF THE DIRECTOR
HAWAII INSTITUTE OF TROPICAL AGRICULTURE
AND HUMAN RESOURCES

ASSISTANT DIRECTOR
HAWAII INSTITUTE OF TROPICAL AGRICULTURE
AND HUMAN RESOURCES
COOPERATIVE EXTENSION AND COUNTY PROGRAMS

KAUAI COUNTY
County Administrator
M04-AM, #89216

Secretary II, SR-14, #04003
Clerk-Steno III, SR-11, #13872

TECHNICAL SUPPORT

Agr Res Tech VI, SR-18, #12753
Agr Res Tech IV, SR-14, #12102, #12758
Agr Res Tech III, SR-11, #12760, #12761,
#14344

RESIDENT FACULTY/STAFF

Researcher, R5, #82516
Assoc Researcher, R4, #83840, #84120,
#85505
Assoc Extension Agent, A4, #82196
Asst Extension Agent, A3, #82175, #83816,
#85526
Jr. Extension Agent, A2, #82363

STATE OF HAWAII
UNIVERSITY OF HAWAII
UNIVERSITY OF HAWAII AT MANOA
COLLEGE OF TROPICAL AGRICULTURE & HUMAN RESOURCES

HAWAII INSTITUTE OF TROPICAL AGRICULTURE
AND HUMAN RESOURCES
KAUAI COUNTY
POSITION ORGANIZATION CHART: W

CHART UPDATED
DATE JUN 30 1996

* & Director of Cooperative Science & Education

STATE OF HAWAII
UNIVERSITY OF HAWAII
UNIVERSITY OF HAWAII AT MANOA
COLLEGE OF TROPICAL AGRICULTURE AND HUMAN RESOURCES

AGRICULTURAL DIAGNOSTIC SERVICE CENTER
POSITION ORGANIZATION CHART: X

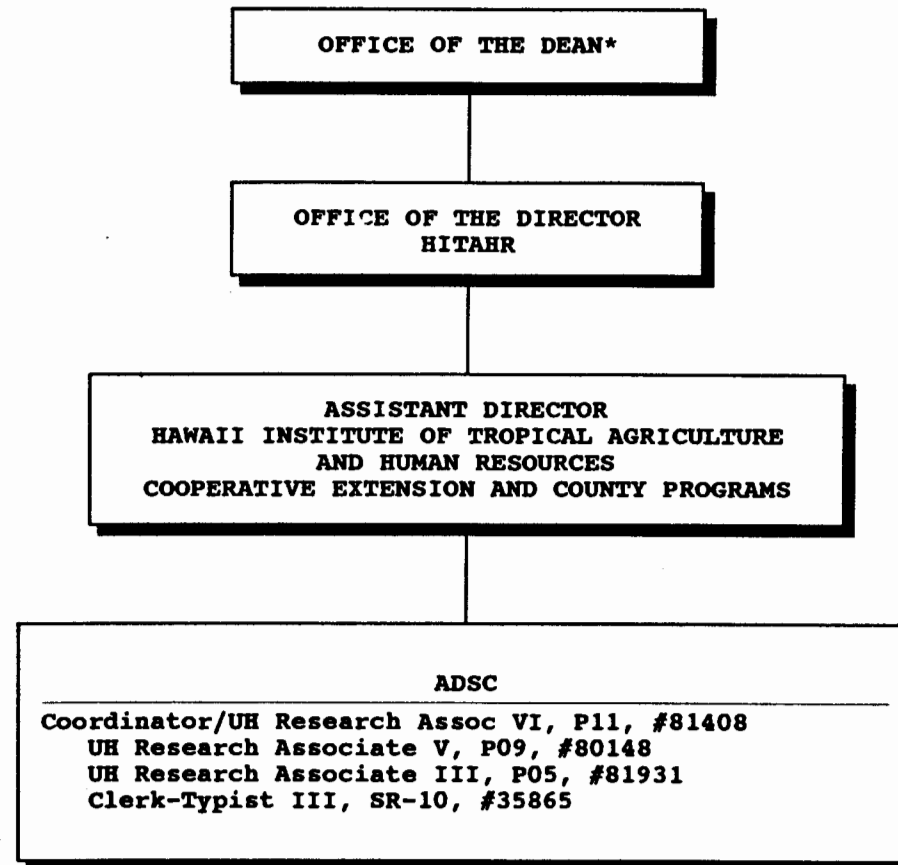


CHART UPDATED
DATE JUN 30 1996

* & Director of Cooperative Science & Education

STATE OF HAWAII
UNIVERSITY OF HAWAII
UNIVERSITY OF HAWAII AT MANOA
COLLEGE OF TROPICAL AGRICULTURE AND HUMAN RESOURCES

CENTER ON THE FAMILY
POSITION ORGANIZATION CHART: Y

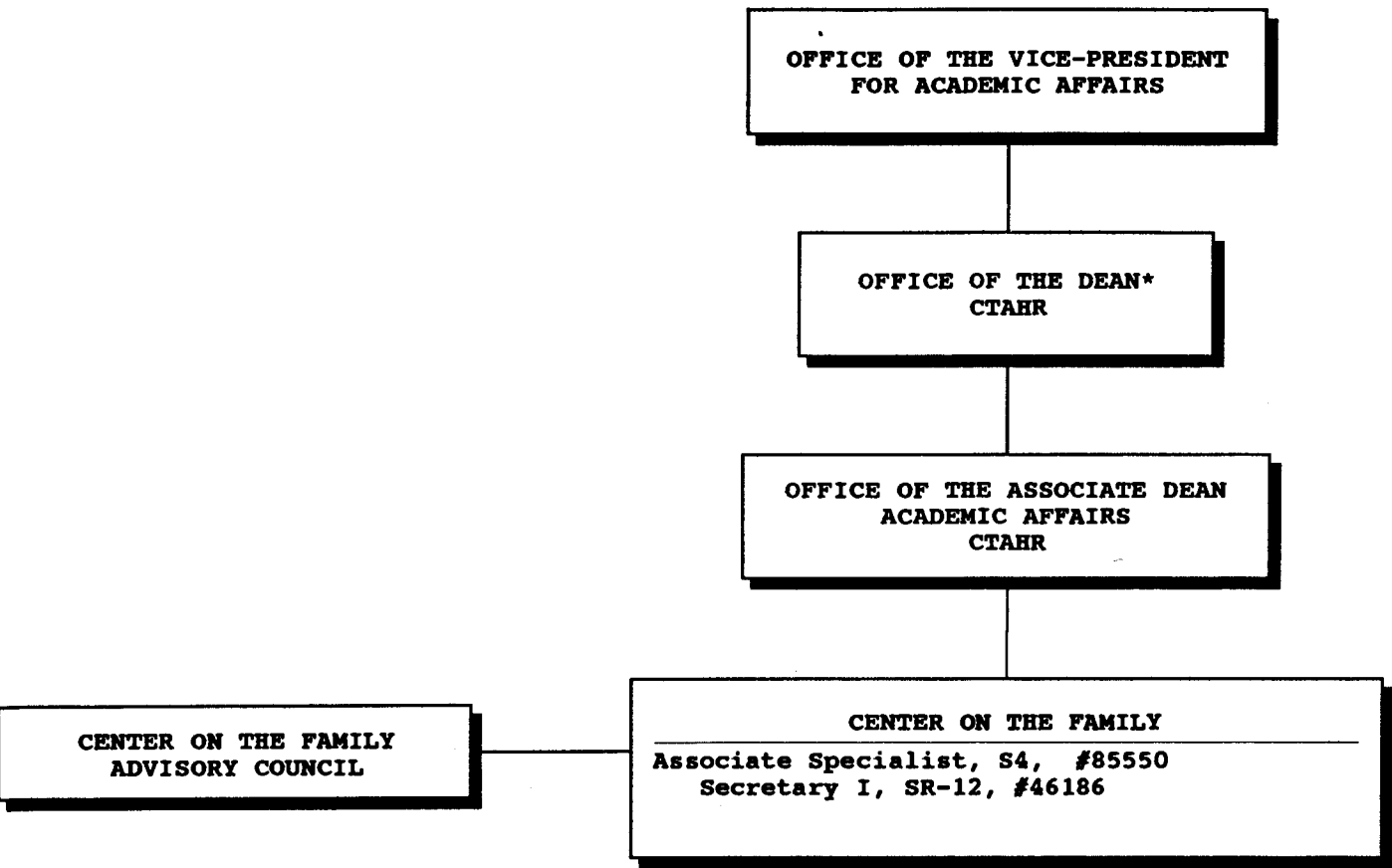


CHART UPDATED
DATE JUN 30 1998

* & Director of Cooperative Science & Education