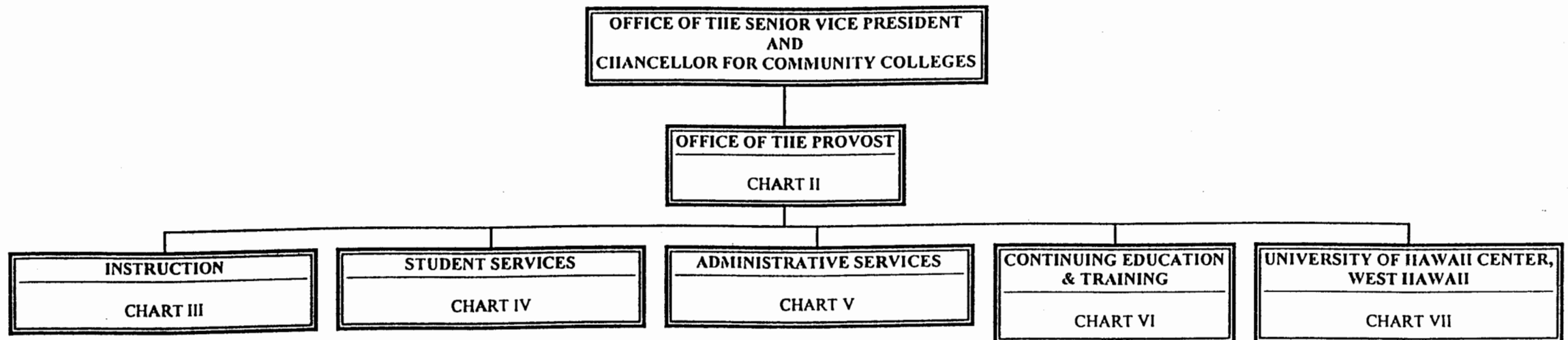


STATE OF HAWAII
UNIVERSITY OF HAWAII
COMMUNITY COLLEGES
HAWAII COMMUNITY COLLEGE

Organization Chart

Chart I



APPROVED/DISAPPROVED:
Jay L. Luman 10/06/97

SENIOR VICE PRESIDENT/ DATE
CHANCELLOR FOR COMMUNITY COLLEGES

	<u>Perm</u>	<u>Temp</u>
General Fund	134.50	5.00
(B) Special Funds	1.00	0.00

STATE OF HAWAII
UNIVERSITY OF HAWAII
COMMUNITY COLLEGES
HAWAII COMMUNITY COLLEGE
OFFICE OF THE PROVOST

Position Organization Chart

Chart II

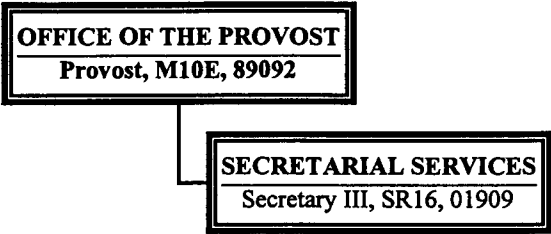


CHART UPDATED

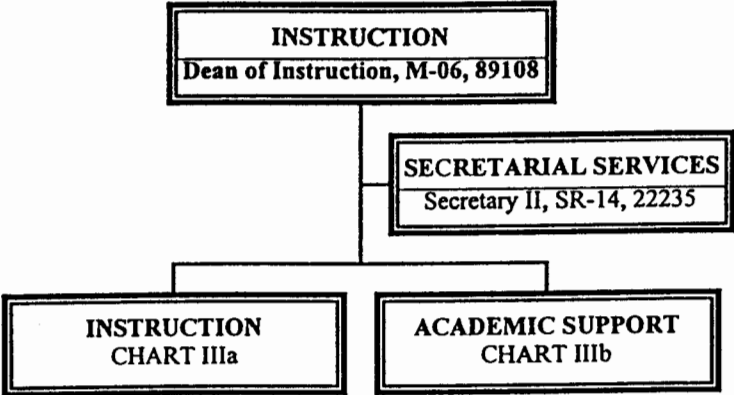
DATE JUL - 1 1997

	<u>Perm</u>	<u>Temp</u>
General Fund	2.00	0.00

STATE OF HAWAII
UNIVERSITY OF HAWAII
COMMUNITY COLLEGES
HAWAII COMMUNITY COLLEGE
INSTRUCTION

Position Organization Chart

Chart III



APPROVED/DISAPPROVED:

Jay B. Lumanah 10/06/97

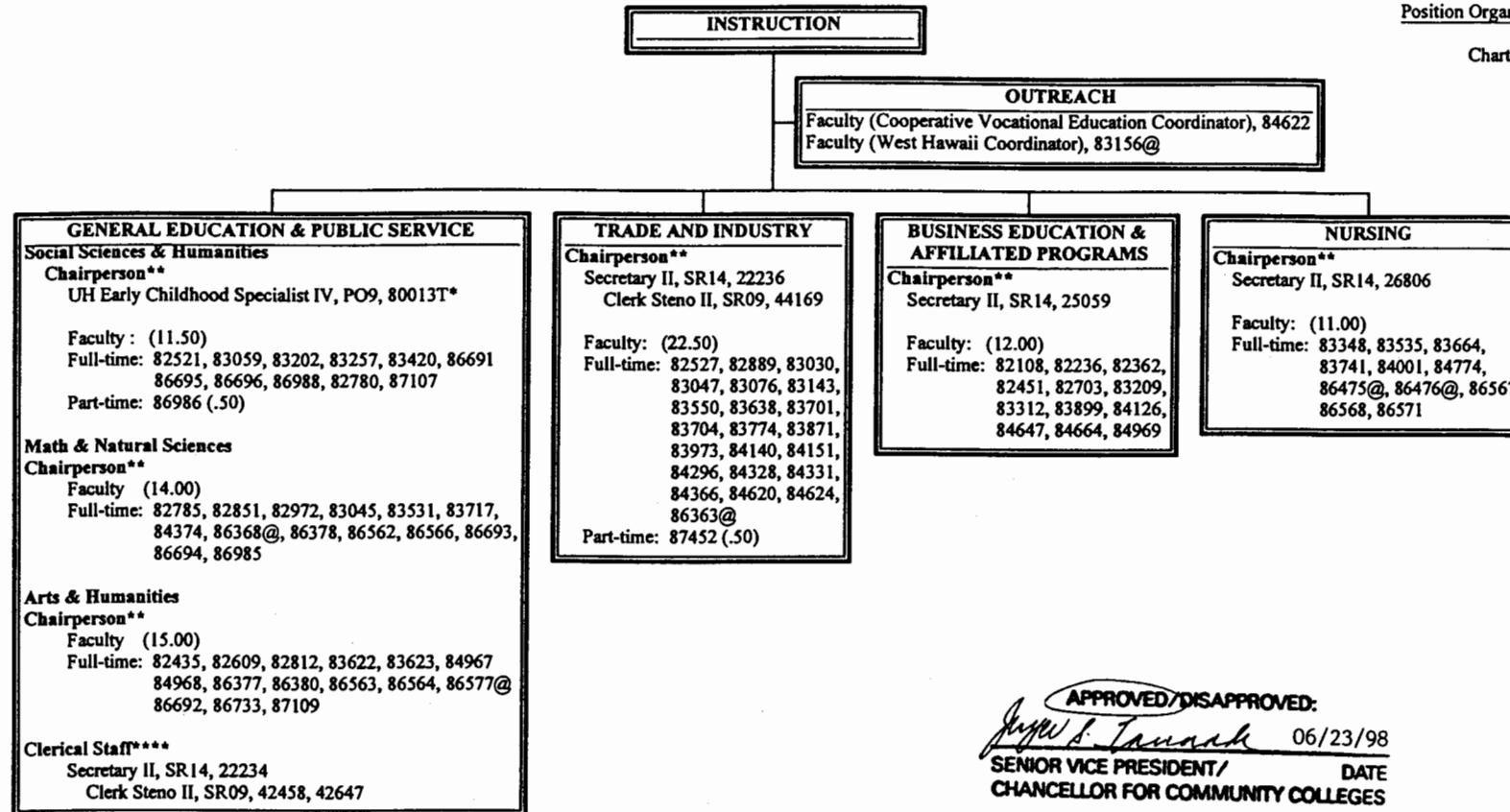
SENIOR VICE PRESIDENT/ CHANCELLOR FOR COMMUNITY COLLEGES
DATE

	<u>Perm</u>	<u>Temp</u>
General Fund	2.00	0.00

STATE OF HAWAII
UNIVERSITY OF HAWAII
COMMUNITY COLLEGES
HAWAII COMMUNITY COLLEGE
INSTRUCTION

Position Organization Chart

Chart IIIA



APPROVED/DISAPPROVED:
[Signature] 06/23/98
SENIOR VICE PRESIDENT/ DATE
CHANCELLOR FOR COMMUNITY COLLEGES

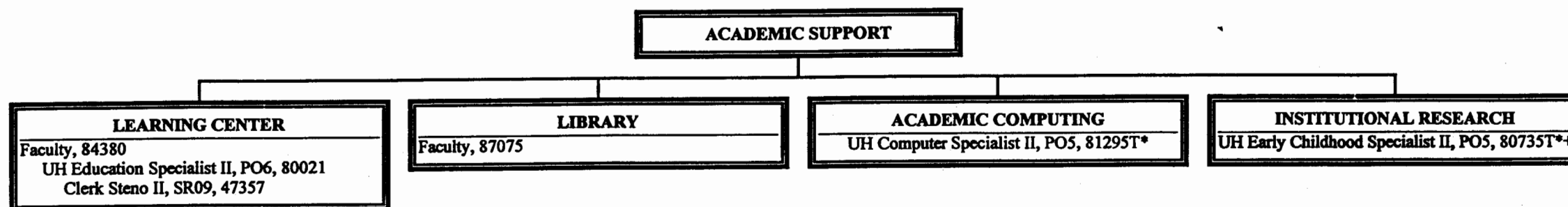
* Temporary Position
**Chairperson is appointed from among faculty positions within the department.
****Clerical staff serve all three General Education Departments.
@Position located at University of Hawaii Center, West Hawaii.

	Perm	Temp
General Fund	95.00	1.00

STATE OF HAWAII
UNIVERSITY OF HAWAII
COMMUNITY COLLEGES
HAWAII COMMUNITY COLLEGE
ACADEMIC SUPPORT

Position Organization Chart

Chart IIIB



APPROVED/DISAPPROVED:
Jay S. Lema 5/13/98

SENIOR VICE PRESIDENT/ DATE
CHANCELLOR FOR COMMUNITY COLLEGES

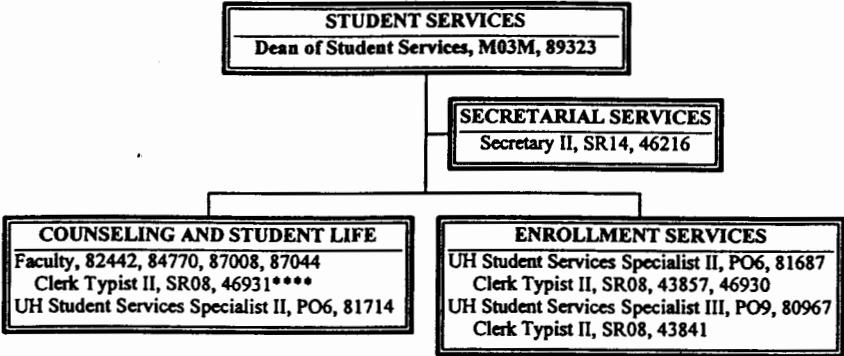
* Temporary Position
+To be redescribed and submitted for reclassification action

	<u>Perm</u>	<u>Temp</u>
General Fund	4.00	2.00

STATE OF HAWAII
UNIVERSITY OF HAWAII
COMMUNITY COLLEGES
HAWAII COMMUNITY COLLEGE
STUDENT SERVICES

Position Organization Chart

Chart IV



APPROVED/DISAPPROVED:
[Signature] 06/23/98

DATE
SENIOR VICE PRESIDENT/
CHANCELLOR FOR COMMUNITY COLLEGES

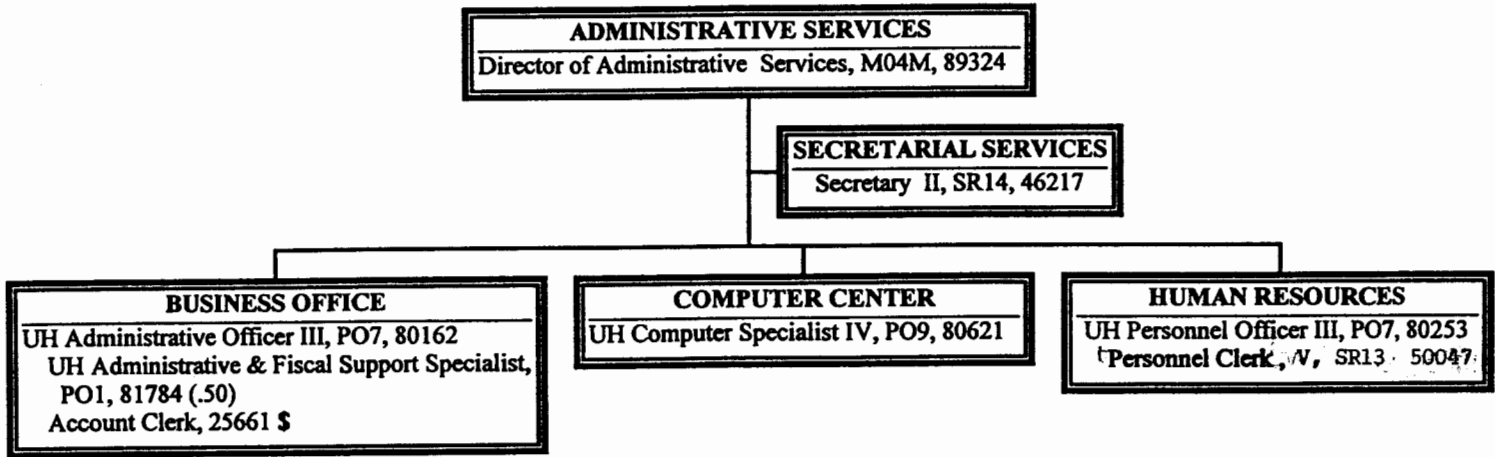
****Clerk Typist reports to the senior faculty of Counseling & Student Life

	Perm	Temp
General Fund	13.00	0.00

STATE OF HAWAII
UNIVERSITY OF HAWAII
COMMUNITY COLLEGES
HAWAII COMMUNITY COLLEGE
ADMINISTRATIVE SERVICES

Position Organization Chart

Chart V



APPROVED/DISAPPROVED:

[Signature] 2/4/98

SENIOR VICE PRESIDENT / DATE
CHANCELLOR FOR COMMUNITY COLLEGES

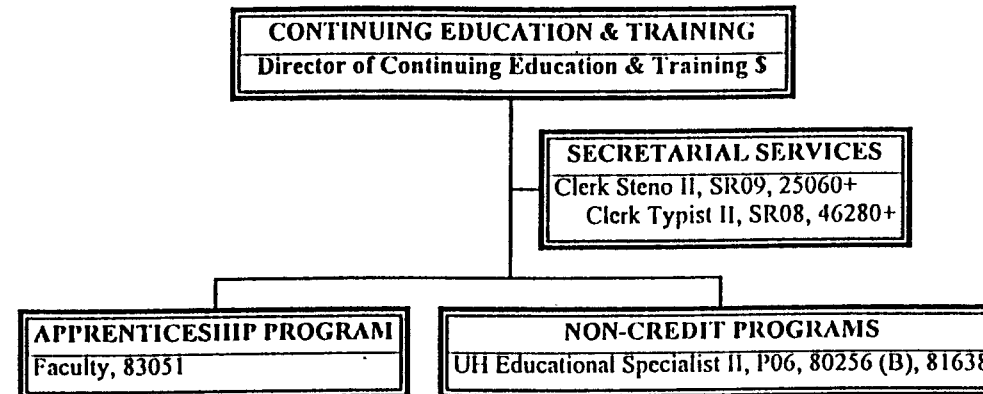
Perm Temp

\$As a result of the FB 1997-99 budget process and effective 7/1/97, position 25661 (1.00), Secretary II was transferred from Windward CC. General Fund 7.50 0.00
\$\$As a result of the FB 1997-99 budget process and effective 7/1/97, position 46258 (1.00), Library Assistant IV was transferred from HawCC,
Academic Support, Library. The position must still be redescribed to the personnel clerk series. *pos # 46258 was a combined position RIF 8/15/97 -*
Position count will be used to convert temp pos to permanent

STATE OF HAWAII
UNIVERSITY OF HAWAII
COMMUNITY COLLEGES
HAWAII COMMUNITY COLLEGE
CONTINUING EDUCATION & TRAINING

Position Organization Chart

Chart VI



APPROVED/DISAPPROVED:

Joyce L. Lamm 10/06/97

SENIOR VICE PRESIDENT / DATE
CHANCELLOR FOR COMMUNITY COLLEGES

#To be redescribed and submitted for classification action

\$As a result of the FB 1997-99 budget process and effective 7/1/97, position 93651F (1.00) was transferred from HonCC and must still be established and classified.

	<u>Perm</u>	<u>Temp</u>
General Fund	5.00	0.00
(B) Special Funds	1.00	0.00

STATE OF HAWAII
UNIVERSITY OF HAWAII
COMMUNITY COLLEGES
HAWAII COMMUNITY COLLEGE
UNIVERSITY OF HAWAII CENTER, WEST HAWAII

Position Organization Chart

Chart VII

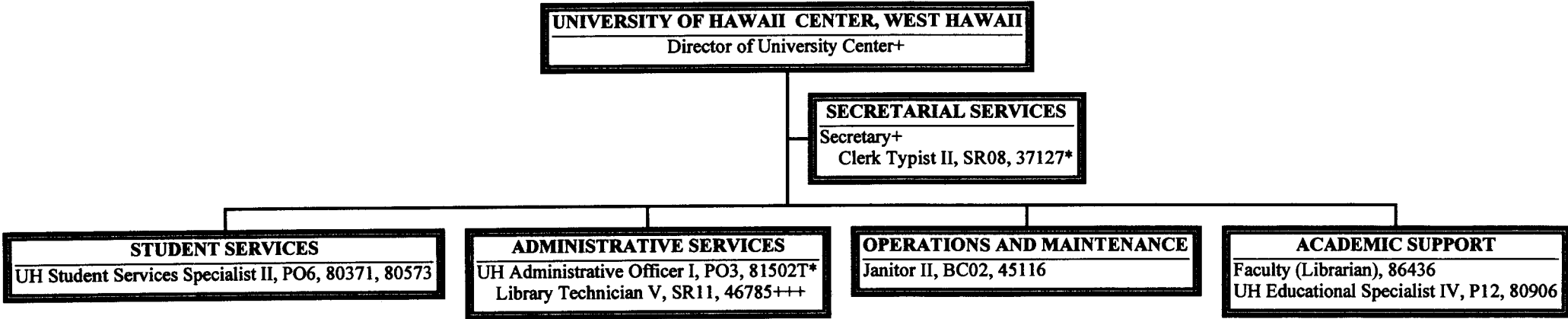


CHART UPDATED

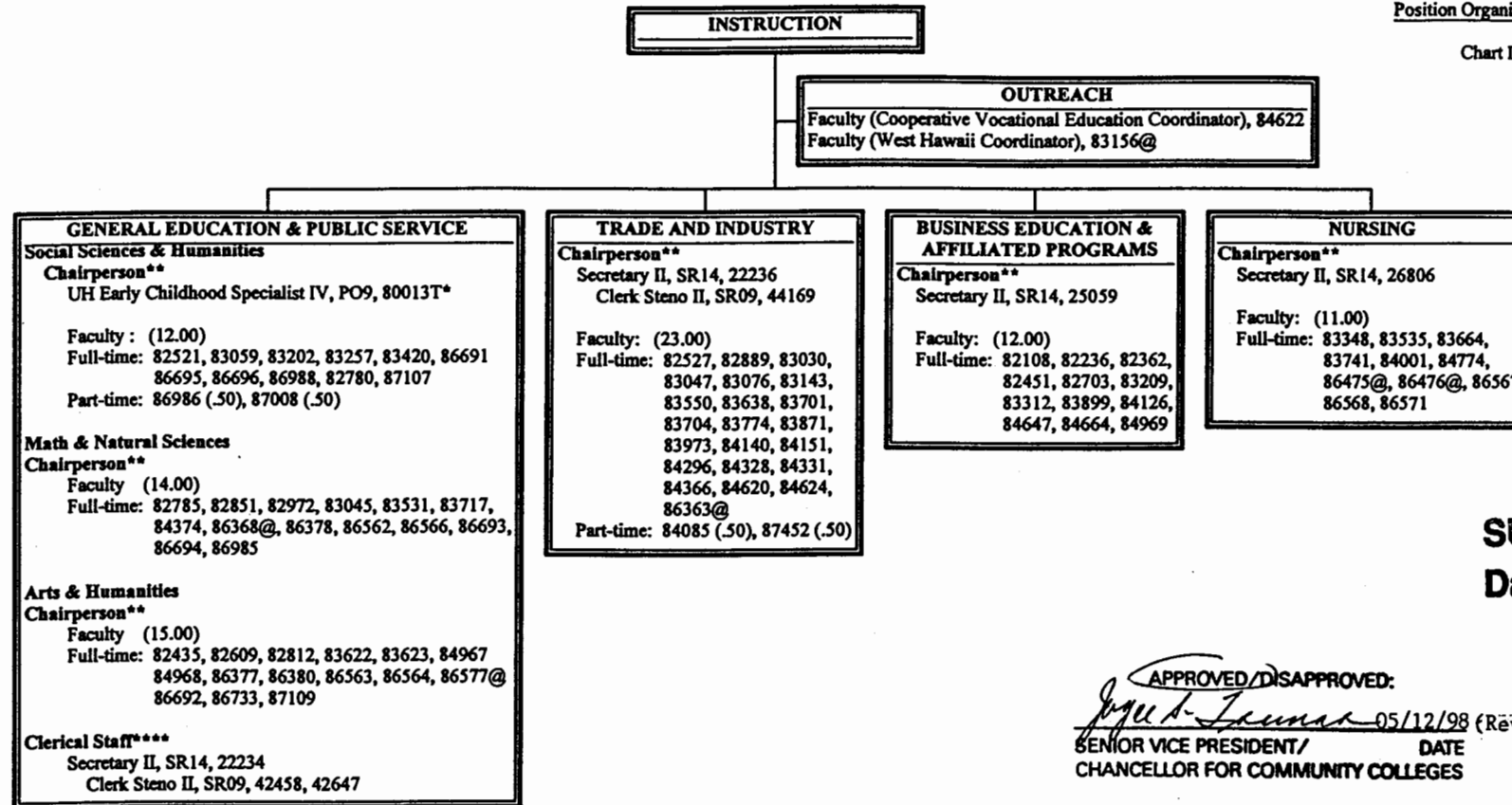
DATE JUL - 1 1997

*Temporary Position
+Temporary Position to be established
+++46785, Library Tec V SR11 to be redescribed

STATE OF HAWAII
UNIVERSITY OF HAWAII
COMMUNITY COLLEGES
HAWAII COMMUNITY COLLEGE
INSTRUCTION

Position Organization Chart

Chart IIIA



SUPERSEDED
Date JUN 23 1998

APPROVED/DISAPPROVED:
[Signature] 05/12/98 (Revised)
SENIOR VICE PRESIDENT/ DATE
CHANCELLOR FOR COMMUNITY COLLEGES

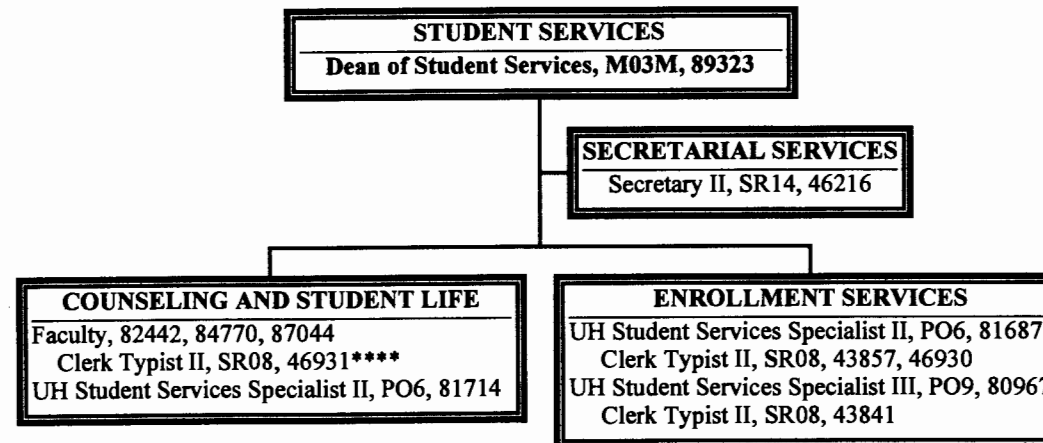
* Temporary Position
**Chairperson is appointed from among faculty positions within the department.
****Clerical staff serve all three General Education Departments.
@Position located at University of Hawaii Center, West Hawaii.

	Perm	Temp
General Fund	96.00	1.00

STATE OF HAWAII
UNIVERSITY OF HAWAII
COMMUNITY COLLEGES
HAWAII COMMUNITY COLLEGE
STUDENT SERVICES

Position Organization Chart

Chart IV



SUPERSEDED
Date JUN 23 1998

CHART UPDATED
DATE JUL - 1 1997

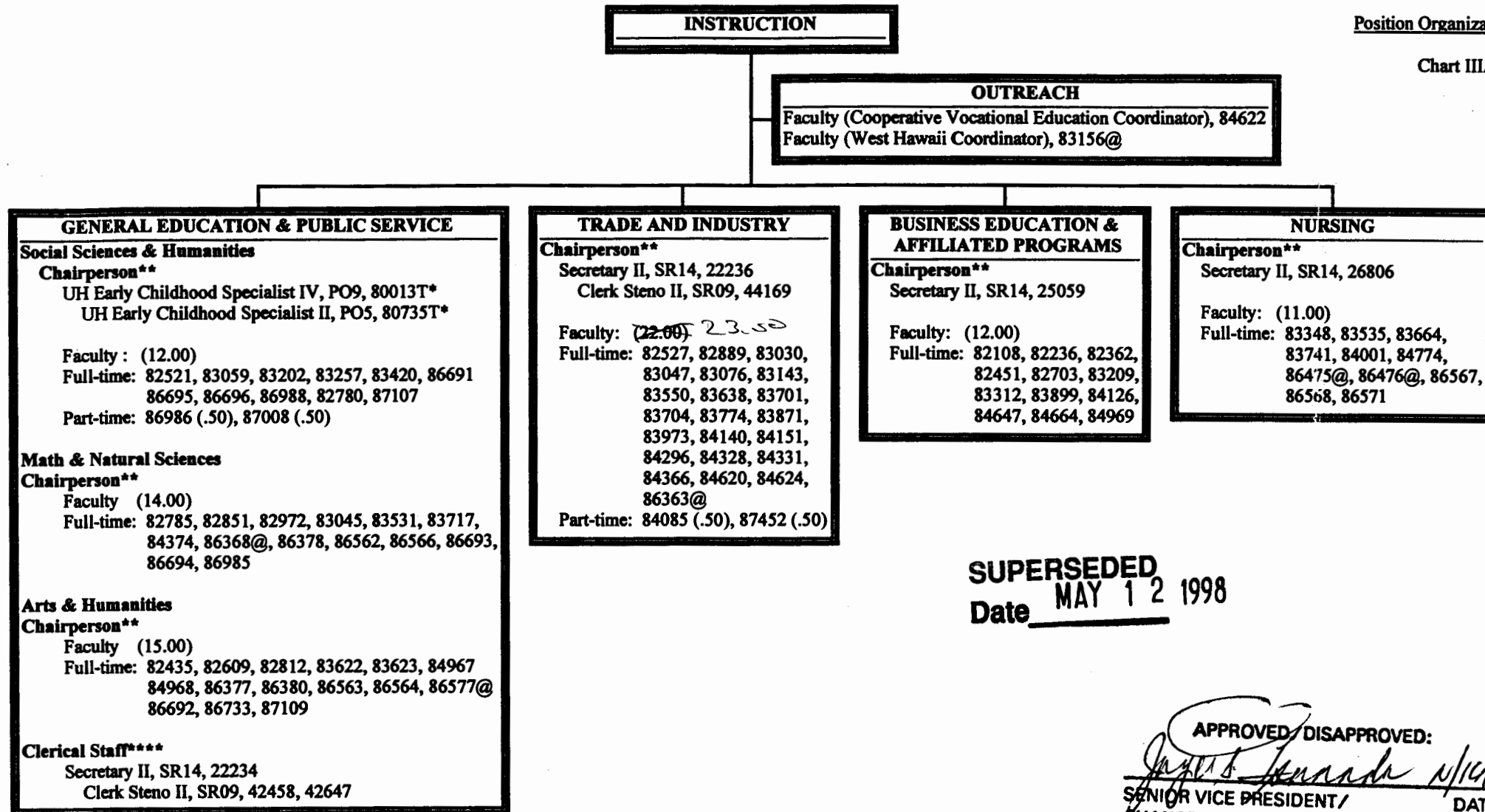
****Clerk Typist reports to the senior faculty of Counseling & Student Life

	<u>Perm</u>	<u>Temp</u>
General Fund	12.00	0.00

STATE OF HAWAII
UNIVERSITY OF HAWAII
COMMUNITY COLLEGES
HAWAII COMMUNITY COLLEGE
INSTRUCTION

Position Organization Chart

Chart IIIA



SUPERSEDED
Date MAY 12 1998

APPROVED/ DISAPPROVED:
[Signature] 5/16/97

SENIOR VICE PRESIDENT/ DATE
CHANCELLOR FOR COMMUNITY COLLEGES

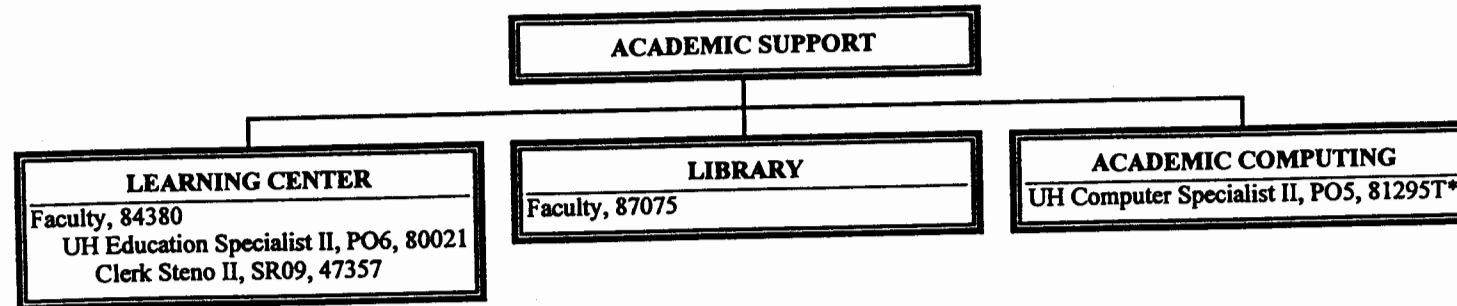
* Temporary Position
**Chairperson is appointed from among faculty positions within the department.
****Clerical staff serve all three General Education Departments.
@Position located at University of Hawaii Center, West Hawaii.

	<u>Perm</u>	<u>Temp</u>
General Fund	96.00	2.00

STATE OF HAWAII
UNIVERSITY OF HAWAII
COMMUNITY COLLEGES
HAWAII COMMUNITY COLLEGE
ACADEMIC SUPPORT

Position Organization Chart

Chart IIIB



APPROVED/DISAPPROVED:
[Signature] 2/4/98

SENIOR VICE PRESIDENT / DATE
CHANCELLOR FOR COMMUNITY COLLEGES

SUPERSEDED
Date MAY 13 1998

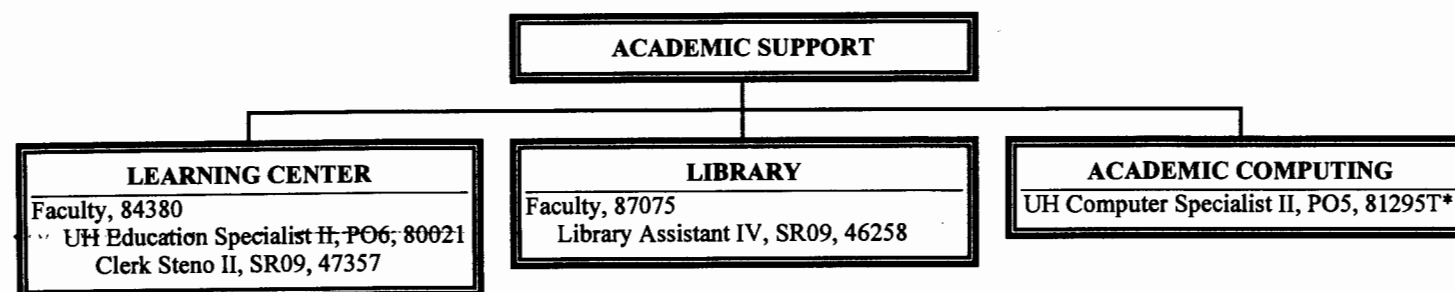
* Temporary Position

	<u>Perm</u>	<u>Temp</u>
General Fund	4.00	1.00

STATE OF HAWAII
UNIVERSITY OF HAWAII
COMMUNITY COLLEGES
HAWAII COMMUNITY COLLEGE
ACADEMIC SUPPORT

Position Organization Chart

Chart IIIB



SUPERSEDED

Date FEB - 4 1998

CHART UPDATED

DATE JUL - 1 1997

* Temporary Position

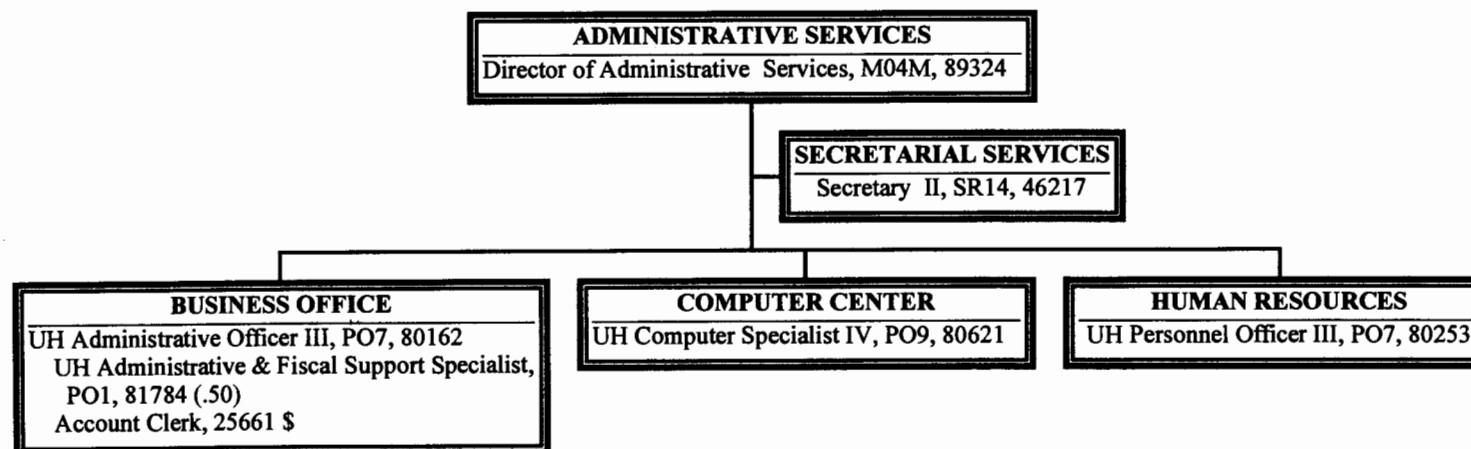
Perm Temp

General Fund 5.00 1.00

STATE OF HAWAII
UNIVERSITY OF HAWAII
COMMUNITY COLLEGES
HAWAII COMMUNITY COLLEGE
ADMINISTRATIVE SERVICES

Position Organization Chart

Chart V



SUPERSEDED
Date FEB - 4 1998

CHART UPDATED
DATE JUL - 1 1997

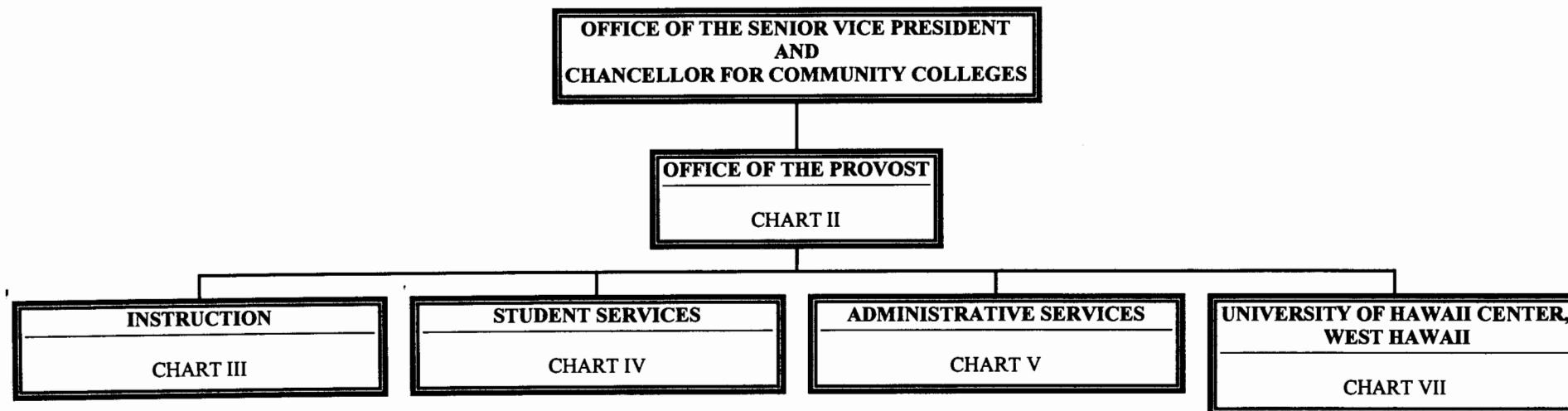
\$As a result of the FB 1997-99 budget process and effective 7/1/97, position 25661 (1.00), Secretary II was transferred from Windward CC.
The position must still be redescribed to the account clerk series.

	<u>Perm</u>	<u>Temp</u>
General Fund	6.50	0.00

STATE OF HAWAII
UNIVERSITY OF HAWAII
COMMUNITY COLLEGES
HAWAII COMMUNITY COLLEGE

Organization Chart

Chart I



SUPERSEDED
Date OCT - 6 1997

CHART UPDATED
DATE JUL - 1 1997

Note - Break in sequence, Chart VI reserved for Continuing Education & Training

	<u>Perm</u>	<u>Temp</u>
General Fund	134.50	5.00
(B) Special Funds	1.00	0.00

STATE OF HAWAII
UNIVERSITY OF HAWAII
COMMUNITY COLLEGES
HAWAII COMMUNITY COLLEGE
OFFICE OF THE PROVOST

Position Organization Chart

Chart II

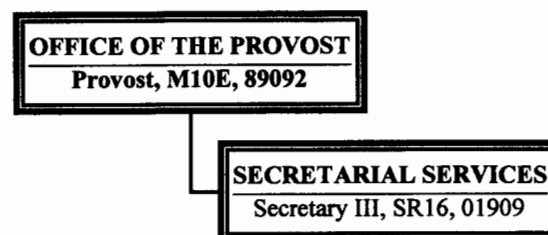


CHART UPDATED
DATE JUL - 1 1997

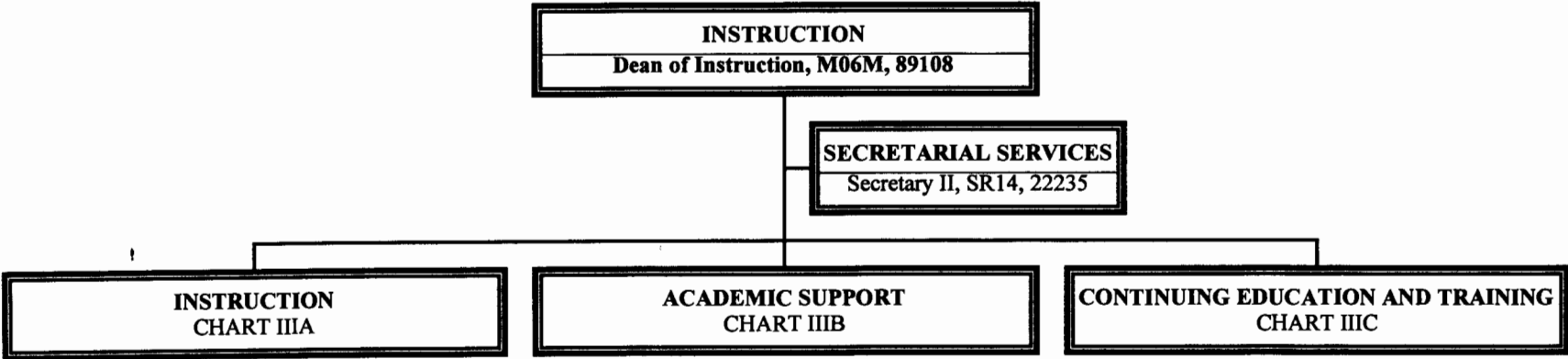
EXTRA

	<u>Perm</u>	<u>Temp</u>
General Fund	2.00	0.00

STATE OF HAWAII
UNIVERSITY OF HAWAII
COMMUNITY COLLEGES
HAWAII COMMUNITY COLLEGE
INSTRUCTION

Position Organization Chart

Chart III



SUPERSEDED
Date OCT - 6 1997

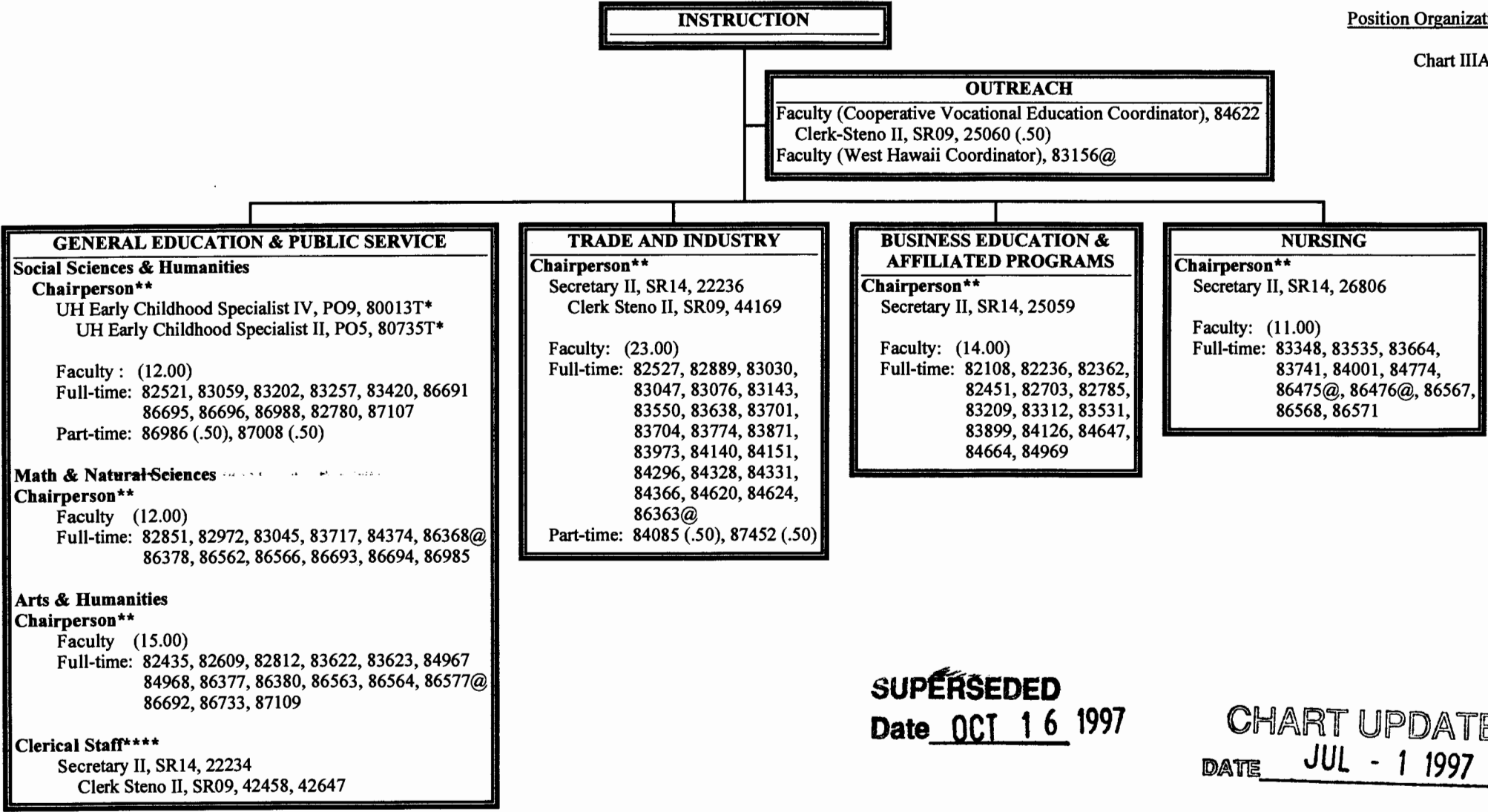
CHART UPDATED
DATE JUL - 1 1997

	<u>Perm</u>	<u>Temp</u>
General Fund	2.00	0.00

STATE OF HAWAII
UNIVERSITY OF HAWAII
COMMUNITY COLLEGES
HAWAII COMMUNITY COLLEGE
INSTRUCTION

Position Organization Chart

Chart IIIA



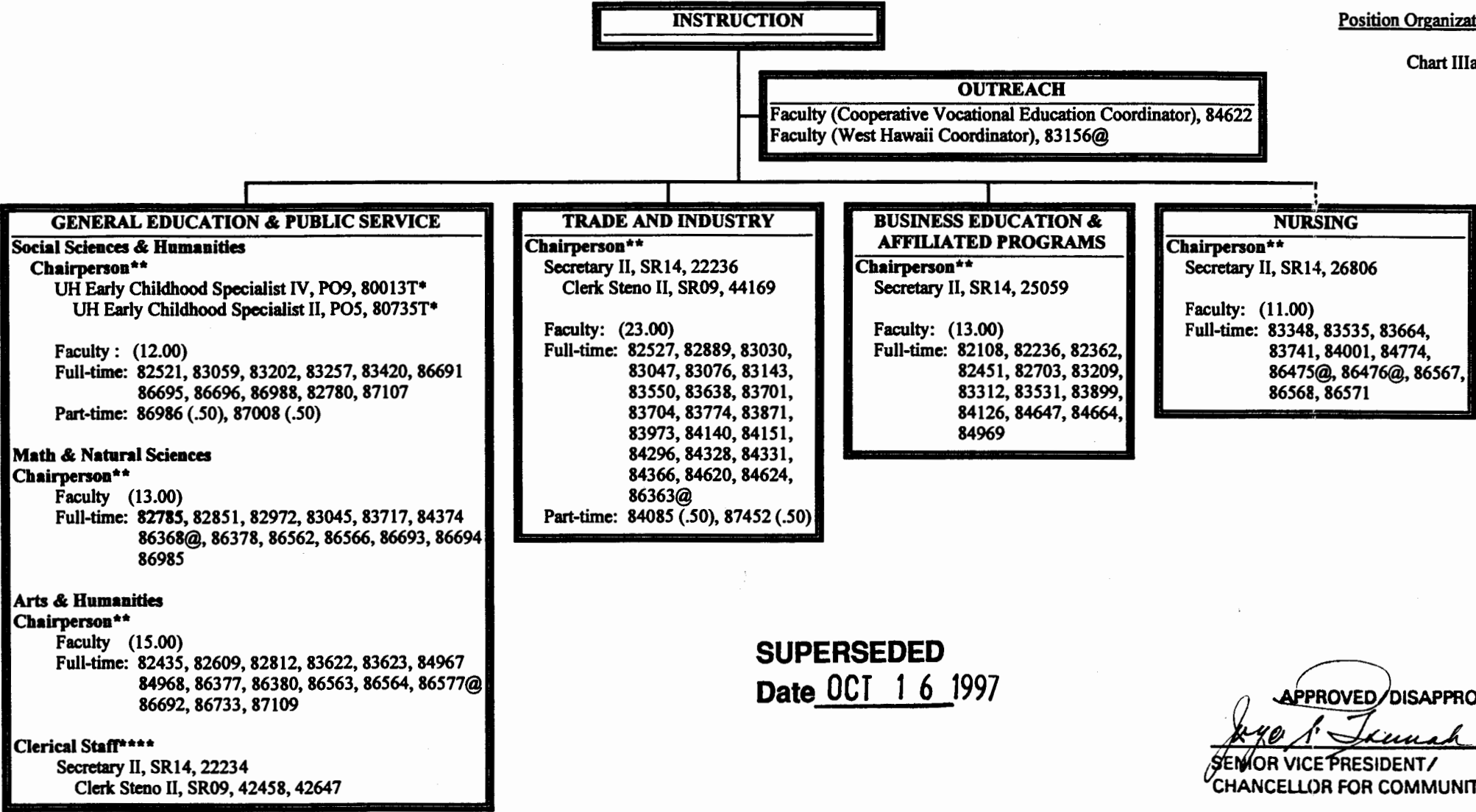
* Temporary Position
**Chairperson is appointed from among faculty positions within the department.
****Clerical staff serves all three General Education Departments.
@Position located at University of Hawaii Center, West Hawaii.

	<u>Perm</u>	<u>Temp</u>
General Fund	96.50	2.00

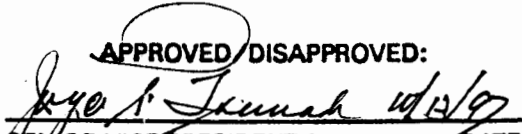
STATE OF HAWAII
UNIVERSITY OF HAWAII
COMMUNITY COLLEGES
HAWAII COMMUNITY COLLEGE
INSTRUCTION

Position Organization Chart

Chart IIIa



SUPERSEDED
Date OCT 16 1997

APPROVED/DISAPPROVED:


SENIOR VICE PRESIDENT / DATE
CHANCELLOR FOR COMMUNITY COLLEGES

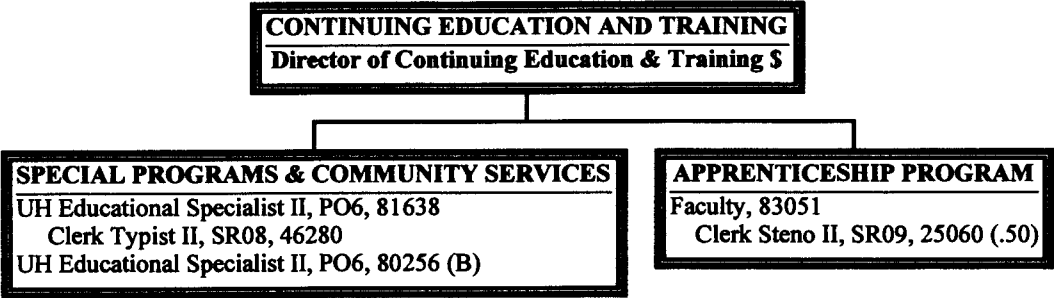
* Temporary Position
**Chairperson is appointed from among faculty positions within the department.
****Clerical staff serve all three General Education Departments.
@Position located at University of Hawaii Center, West Hawaii.

	Perm	Temp
General Fund	96.00	2.00

STATE OF HAWAII
UNIVERSITY OF HAWAII
COMMUNITY COLLEGES
HAWAII COMMUNITY COLLEGE
CONTINUING EDUCATION & TRAINING

Position Organization Chart

Chart IIIC



SUPERSEDED
Date OCT - 6 1997

CHART UPDATED
DATE JUL - 1 1997

\$As a result of the FB 1997-99 budget process and effective 7/1/97, position 93651F (1.00), Admin. Asst. was transferred from Honolulu CC.
The position must still be established and classified.

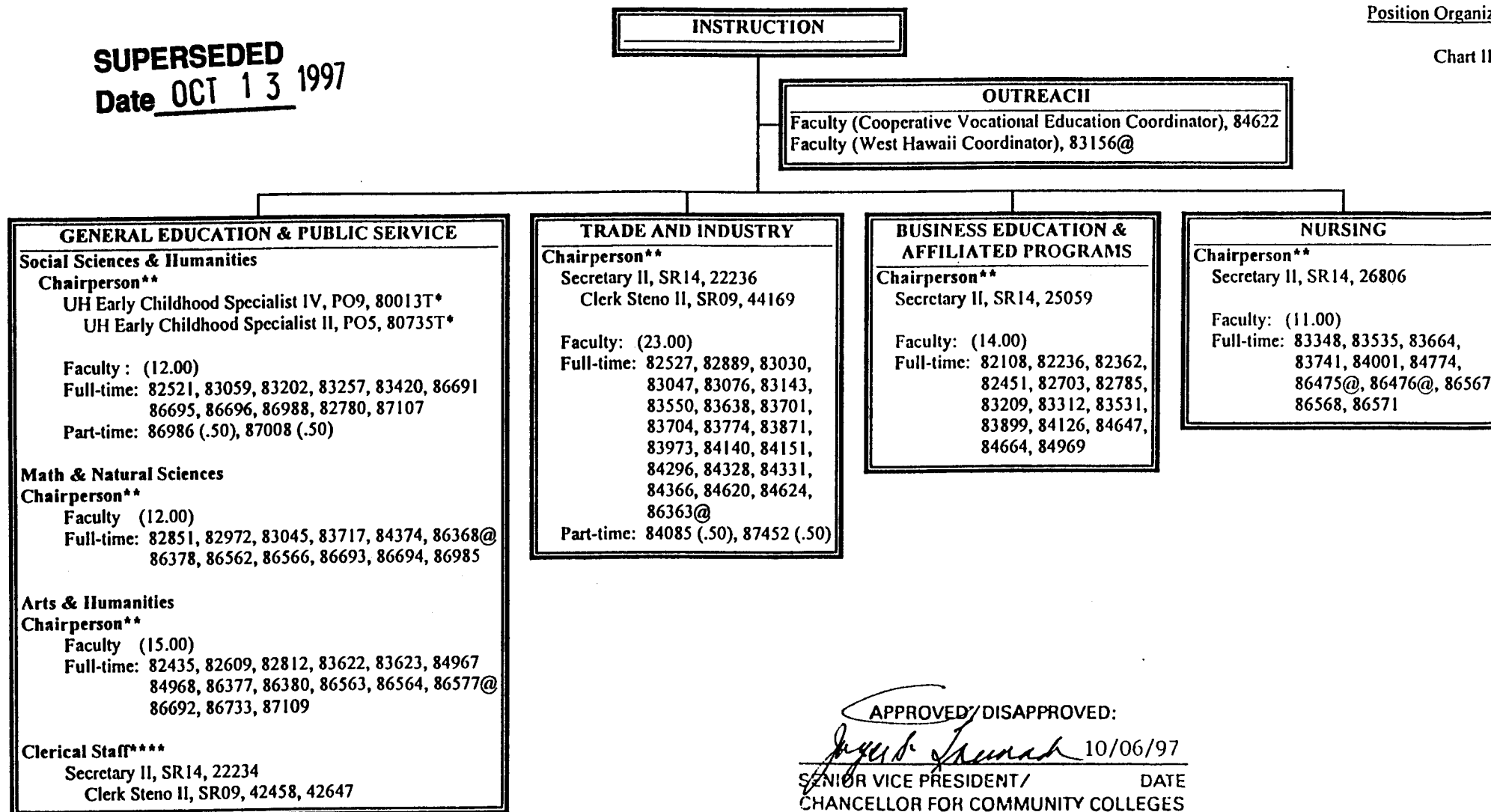
	<u>Perm</u>	<u>Temp</u>
General Fund	4.50	0.00
(B) Special Funds	1.00	0.00

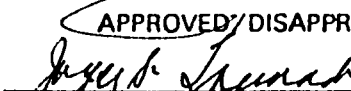
STATE OF HAWAII
UNIVERSITY OF HAWAII
COMMUNITY COLLEGES
HAWAII COMMUNITY COLLEGE
INSTRUCTION

Position Organization Chart

Chart IIIA

SUPERSEDED
Date OCT 13 1997



APPROVED/DISAPPROVED:
 10/06/97

SENIOR VICE PRESIDENT/ DATE
CHANCELLOR FOR COMMUNITY COLLEGES

* Temporary Position
**Chairperson is appointed from among faculty positions within the department.
****Clerical staff serve all three General Education Departments.
@Position located at University of Hawaii Center, West Hawaii.

	Perm	Temp
General Fund	96.00	2.00