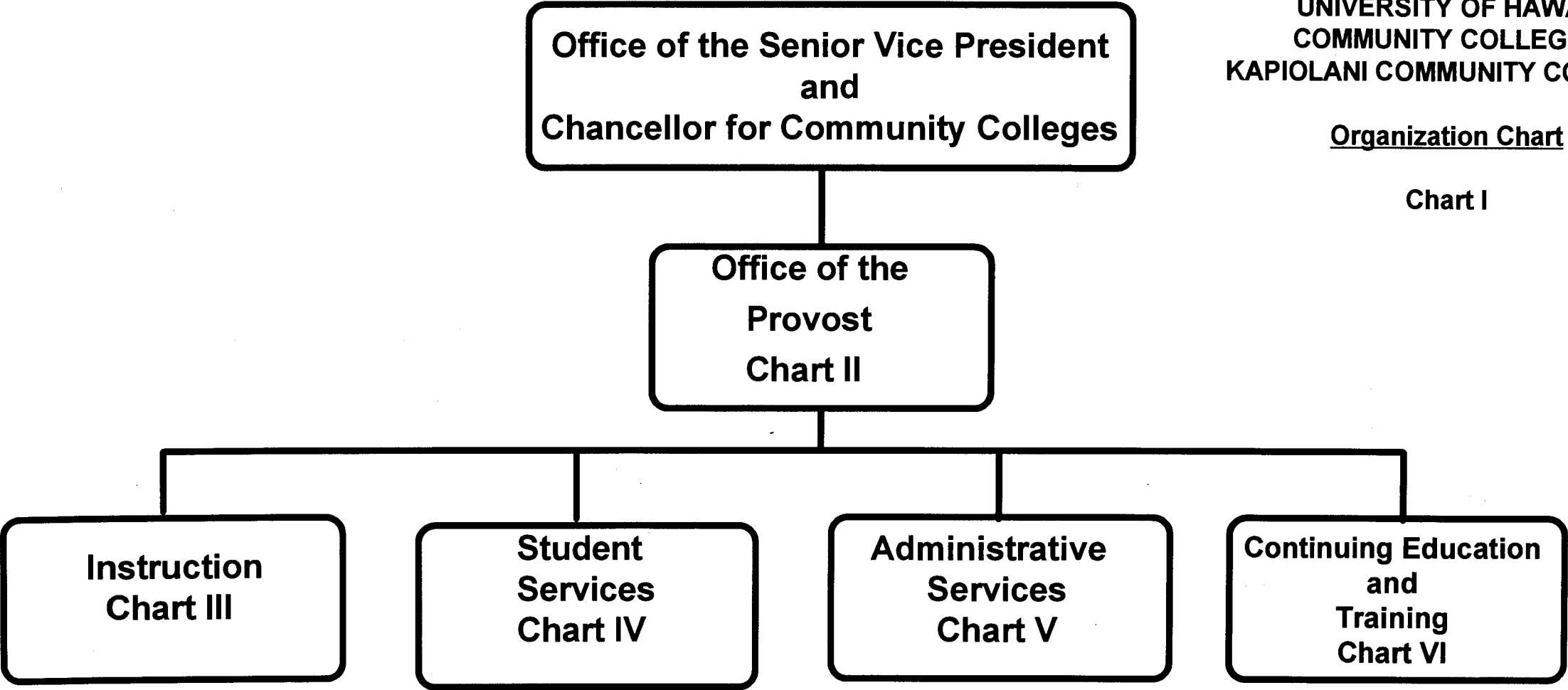


STATE OF HAWAII
UNIVERSITY OF HAWAII
COMMUNITY COLLEGES
KAPIOLANI COMMUNITY COLLEGE

Organization Chart

Chart I



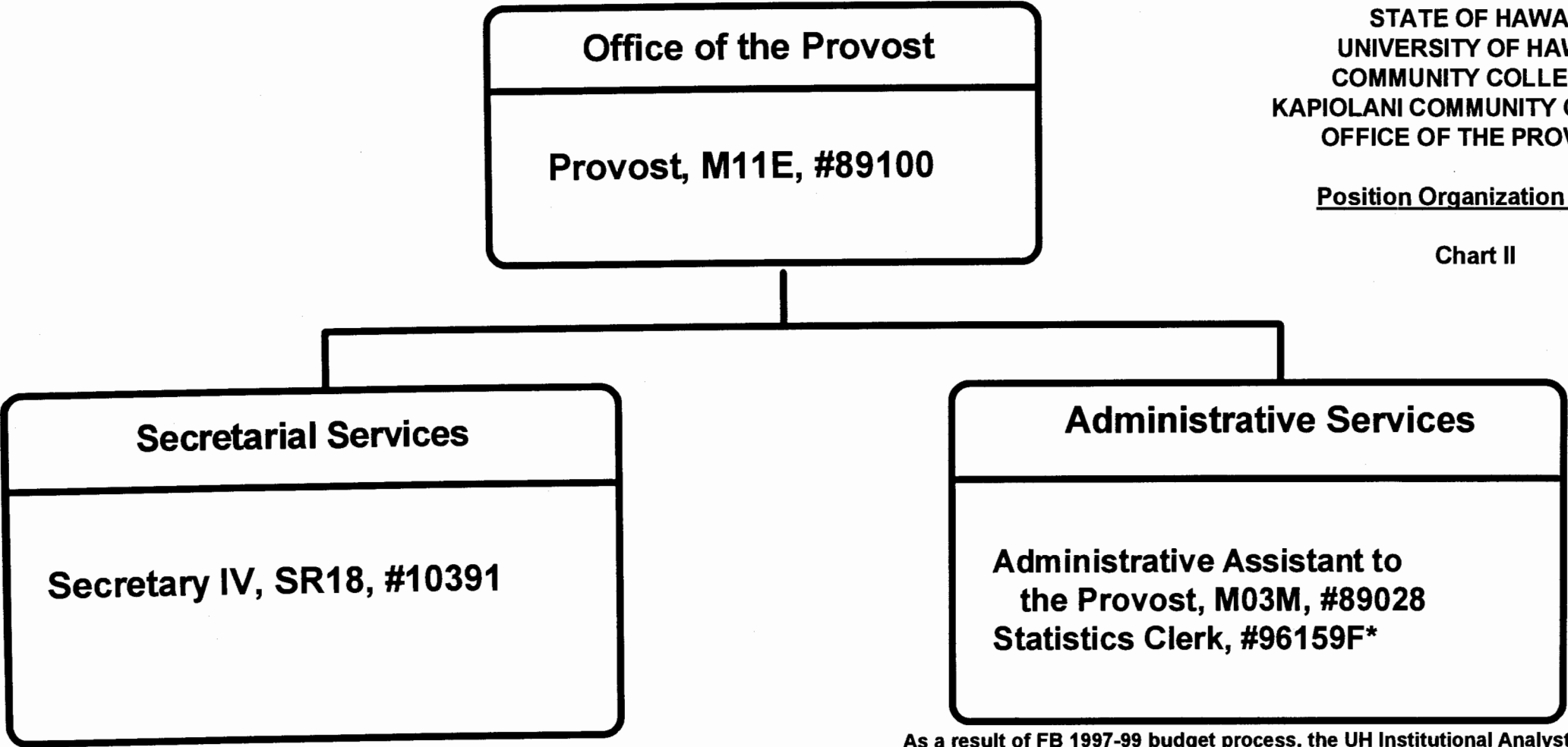
	<u>Perm</u>	<u>Temp</u>
General Fund	312.60	27.50
(W) Revolving Funds	6.00	
(B) Special Funds	18.00	

CHART UPDATED
DATE JUL - 1 1997

STATE OF HAWAII
UNIVERSITY OF HAWAII
COMMUNITY COLLEGES
KAPIOLANI COMMUNITY COLLEGE
OFFICE OF THE PROVOST

Position Organization Chart

Chart II



As a result of FB 1997-99 budget process, the UH Institutional Analyst, #96661F, was reallocated to the Library (Chart IIIf) as a UH Ed. & Acad. Supp. Spec., #80914T.

*Temporary position

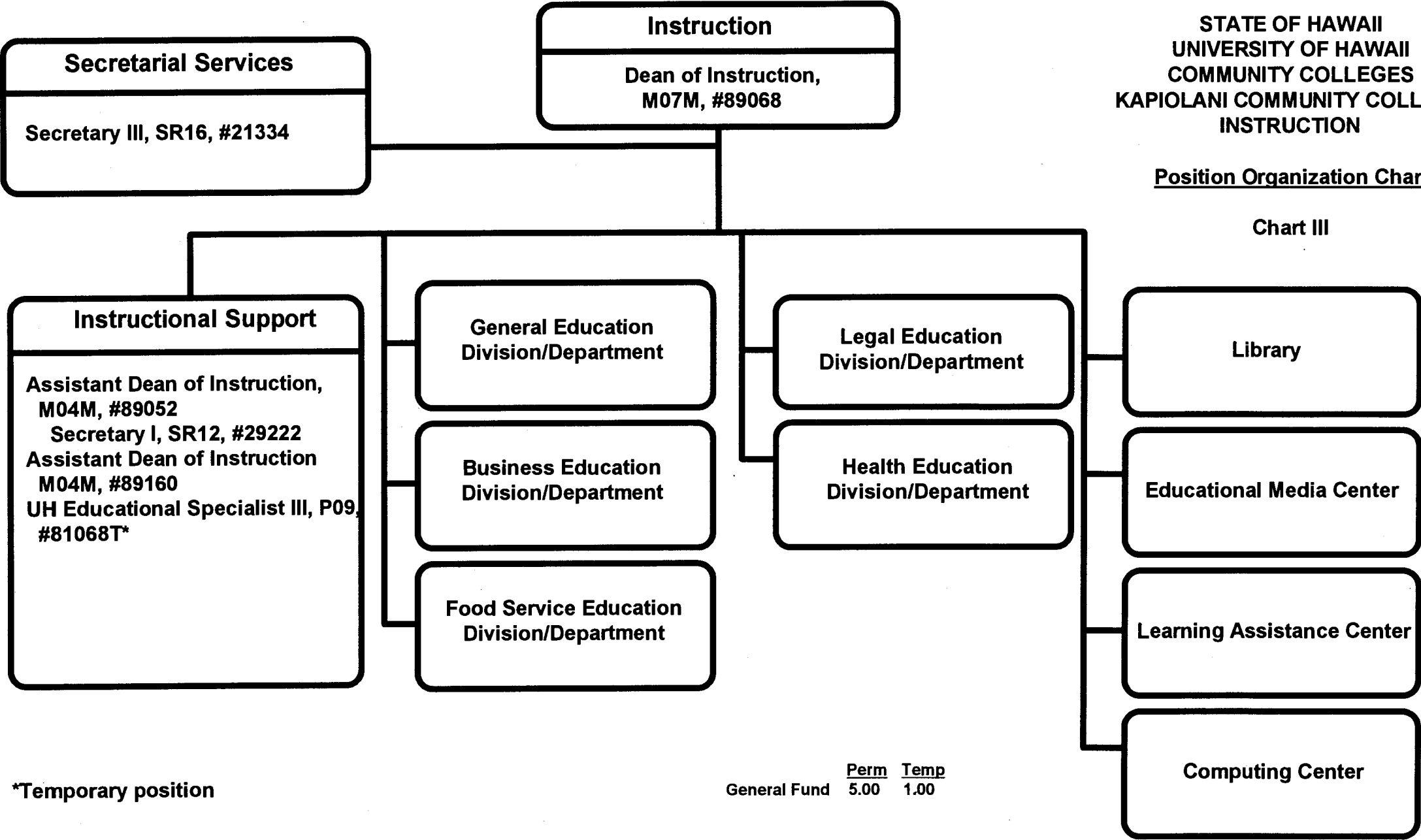
	<u>Perm</u>	<u>Temp</u>
General Fund	3.00	1.00

CHART UPDATED
DATE JUL - 1 1997

STATE OF HAWAII
UNIVERSITY OF HAWAII
COMMUNITY COLLEGES
KAPIOLANI COMMUNITY COLLEGE
INSTRUCTION

Position Organization Chart

Chart III



*Temporary position

	<u>Perm</u>	<u>Temp</u>
General Fund	5.00	1.00

General Education Division/Department

Social Sciences

Chairperson**

Faculty (12.00)

Full-time: #82152, #82706, #82935, #83492, #83560, #83642, #83745, #84972, #84973, #86599,
#86938, #87403

Language Arts

Chairperson**

Faculty (31.00)

Full-time: #82178, #82232, #82555, #82653\$, #82776, #82876, #83123, #83308, #83447, #83521\$,
#83559, #83783, #83795, #83870, #83903, #84327, #84409, #84623\$, #86594, #86595,
#86596, #86604, #86798, #86803, #86960, #86945, #87084T*, #87143T*, #87583T*, #87612T*
Part-time: #82540 (.50), #86799 (.50)

Mathematics/Science

Chairperson**

Faculty (25.00)

Full-time: #82031, #82394, #82492, #82910, #82981, #83096, #83262, #83357, #83688, #83733,
#83939, #83974, #84458, #86592, #86593, #86600, #86606, #86718, #86754, #86827,
#86830, #86959, #87401, #86947T*, #88032T*
UH Educational Specialist I, P03, #81246

Humanities

Chairperson**

Faculty (20.00)

Full-time: #82052, #82231, #82607, #82631, #82803\$, #82925, #82983, #83094, #83809, #84470, #84882,
#84971, #84974, #86602, #86937, #87402, #87404, #86696T*, #87072T*, #87074T*

General Education, Clerical Staff****

Secretary II, SR14, #22313

Clerk-Typist II, SR08, #26658, #22310, #47900 (.50)

* Temporary position

**Chairperson is appointed from among faculty positions within the department.

****Clerical staff serves all four General Education Departments—Social Sciences, Language Arts, Mathematics/Science, and Humanities.

\$As a result of the FB1997-99 budget process and effective 7/1/97, the position was transferred from Hon CC.

STATE OF HAWAII UNIVERSITY OF HAWAII COMMUNITY COLLEGES KAPIOLANI COMMUNITY COLLEGE INSTRUCTION

Position Organization Chart

Chart III A

	<u>Perm</u>	<u>Temp</u>
General Fund	83.50	9.00

CHART UPDATED

DATE JUL - 1 1997

Business Education Division/Department

Chairperson**

Secretary II, SR14, #22312

Clerk-Typist II, SR08, #47612 (.50)

Faculty (18.00)

**Full-time: #82026, #82066, #82218, #82348, #82389,
#82429, #82503, #82728, #82795, #82931,
#83221, #83734, #84150, #84337, #84369,
#86591, #86598, #87123**

****Chairperson is appointed from among faculty positions within the department.**

**STATE OF HAWAII
UNIVERSITY OF HAWAII
COMMUNITY COLLEGES
KAPIOLANI COMMUNITY COLLEGE
INSTRUCTION**

Position Organization Chart

Chart III B

	<u>Perm</u>
General Fund	19.50

CHART UPDATED
DATE JUL - 1 1997

**Food Service and Hospitality Education
Division/Department**

Chairperson**

Secretary II, SR14, #16962
Cook III, WS 08, #22318 (W), #32863 (W)
Snack Bar Cashier, SR06, #22319 (W)
UH Educational & Academic Support Specialist, P01,
#81304 (W), #81420 (W), #81422 (W)

Faculty (15.00)

Full-time: #82467, #82683, #82970, #83133, #83225, #83460,
#83684, #83901, #84091, #84103, #84304, #84539,
#86597, #86670, #86719

****Chairperson is appointed from among faculty positions within the department.**

**STATE OF HAWAII
UNIVERSITY OF HAWAII
COMMUNITY COLLEGES
KAPIOLANI COMMUNITY COLLEGE
INSTRUCTION**

Position Organization Chart

Chart III C

	<u>Perm</u>
General Fund	16.00
(W) Revolving Funds	6.00

CHART UPDATED
DATE JUL - 1 1997

Legal Education Division/Department

Chairperson**

Secretary II, SR14, #18092

Faculty (3.50)

Full-time: #82380, #83071, #83360

Part-time: #84370 (.50)

**Chairperson is appointed from among faculty positions within the department.

STATE OF HAWAII
UNIVERSITY OF HAWAII
COMMUNITY COLLEGES
KAPIOLANI COMMUNITY COLLEGE
INSTRUCTION

Position Organization Chart

Chart III D

	<u>Perm</u>
General Fund	4.50

CHART UPDATED
DATE JUL - 1 1997

Health Education Division/Department

Health Sciences

Chairperson**

Secretary II, SR14, #32952

Clerk-Steno II, SR09, #40964 (.50)

Faculty (16.10)

Full-time: #82121, #82162, #82405, #84326, #82576, #83310, #83321, #83667, #84223, #85821, #86384, #86385, #86741, #86752, #86882, #86886

Part-time: #87052 (.10)

Nursing

Chairperson**

Secretary II, SR14, #18093

Clerk-Typist II, SR08, #42015

Faculty (30.50)

Full-time: #82064, #82513, #84487, #84629, #84655, #86737, #86738, #86740, #86742, #86743, #86746, #86747, #86749, #86750, #86751, #86774, #86776, #86777, #86778, #86832, #86833, #86834, #86836, #86837, #86838, #86839, #86840

Part-time: #82244 (.50), #84308 (.50), #86581 (.50), #86736 (.50), #86739 (.50), #88072 (.50), #88074 (.50)

Emergency Medical Services

Chairperson**

Secretary II, SR14, #37300

Clerk-Typist II, SR08, #35641

Oahu Faculty (7.50)

Full-time: #86705, #86807, #86808, #86809, #87047, #87110, #87440

Part-time: #97663F*** (.25 FTE), #97657F*** (.25 FTE)

Hawaii Faculty (2.00)

Full-time+: #84739, #84740

Clerk-Typist II, SR08, #33867

Kauai Faculty (1.00)

Full-time: #84754

Clerk-Typist II, SR08, #33868 (.50 FTE)

Maui Faculty (2.00)

Full-time+: #85871, #88040

Clerk-Typist II, SR08, #33866 (.50 FTE)

**Chairperson is appointed from among faculty positions within department.

***Position to be established.

+One supervisor is assigned from among the faculty positions within the island.

STATE OF HAWAII UNIVERSITY OF HAWAII KAPIOLANI COMMUNITY COLLEGE INSTRUCTION

Position Organization Chart

Chart III E

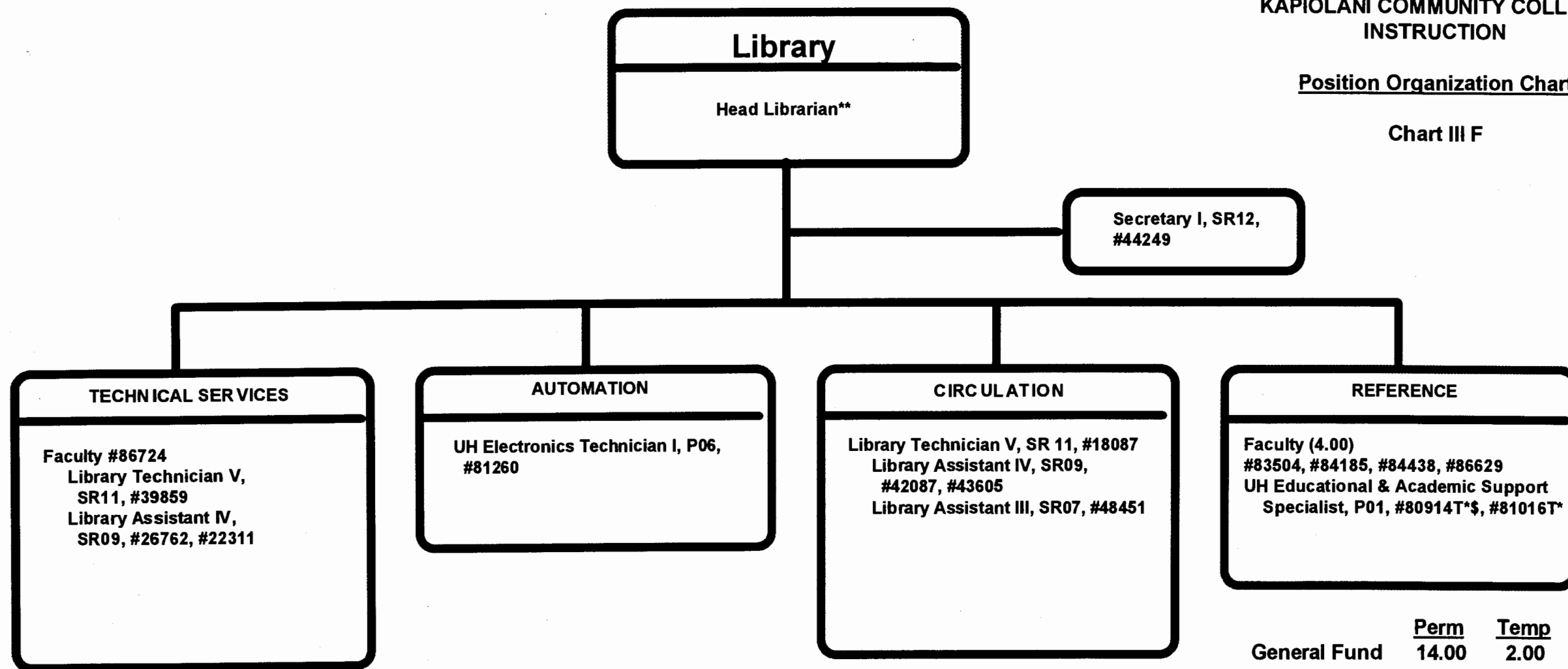
	<u>Perm</u>
General Fund	66.60

CHART UPDATED
DATE JUL - 1 1997

STATE OF HAWAII
UNIVERSITY OF HAWAII
COMMUNITY COLLEGES
KAPIOLANI COMMUNITY COLLEGE
INSTRUCTION

Position Organization Chart

Chart III F



* Temporary position

**Unit Head is appointed from among faculty positions within the unit.

\$As a result of FB 1997-99 budget process, a UH Institutional Analyst, #96661F, was reallocated from the Provost's Office (Chart II) and established as a UH Educational and Academic Support Specialist.

CHART UPDATED
DATE JUL - 1 1997

Educational Media Center

Unit Head**

- Faculty #82386, #87603
- UH Electronic Engineer I, P12, #81581
- UH Computer Specialist IV, P09, #81069
- UH Computer Specialist III, P07, #81654
- UH Electronic Technician II, P09, #80034
 - UH Electronic Technician I, P06, #81277
 - Audio Visual Technician I, BC07, #47350 (.50)
 - UH Media Specialist III, P07, #80694
- UH Graphic Artist II, P05, #81060
 - Offset Press Operator III, BC09, #39797
 - Offset Press Operator II, BC08, #47346 (.50)
- Clerk-Steno III, SR11, #21321
- Clerk-Typist II, SR08, #42014*

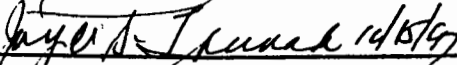
* Temporary position
**Unit Head is appointed from among faculty positions within the unit.

STATE OF HAWAII
UNIVERSITY OF HAWAII
COMMUNITY COLLEGES
KAPIOLANI COMMUNITY COLLEGE
INSTRUCTION

Position Organization Chart

Chart III G

	<u>Perm</u>	<u>Temp</u>
General Fund	12.00	1.00

APPROVED/DISAPPROVED:


SENIOR VICE PRESIDENT/ CHANCELLOR FOR COMMUNITY COLLEGES DATE 10/15/97

Learning Assistance Center

Unit Head**

Faculty (4.50)

Full-time: #84072, #86758, #87120, #87144T*

Part-time: #86757 (.50)

Clerk-Typist II, SR08, #14214

***Temporary position**

****Unit Head is appointed from among faculty positions at the College.**

STATE OF HAWAII
UNIVERSITY OF HAWAII
COMMUNITY COLLEGES
KAPIOLANI COMMUNITY COLLEGE
INSTRUCTION

Position Organization Chart

Chart III H

	<u>Perm</u>	<u>Temp</u>
General Fund	4.50	1.00

CHART UPDATED

DATE JUL - 1 1997

Computing Center

UH Computer Specialist V, P11, #81384
UH Computer Specialist IV, P09, #80529
UH Computer Specialist III, P07, #80340
UH Educational Specialist II, P06, #80351, #81220T*

* Temporary position

STATE OF HAWAII
UNIVERSITY OF HAWAII
COMMUNITY COLLEGES
KAPIOLANI COMMUNITY COLLEGE
INSTRUCTION

Position Organization Chart

Chart III I

	<u>Perm</u>	<u>Temp</u>
General Fund	4.00	1.00

APPROVED/DISAPPROVED:

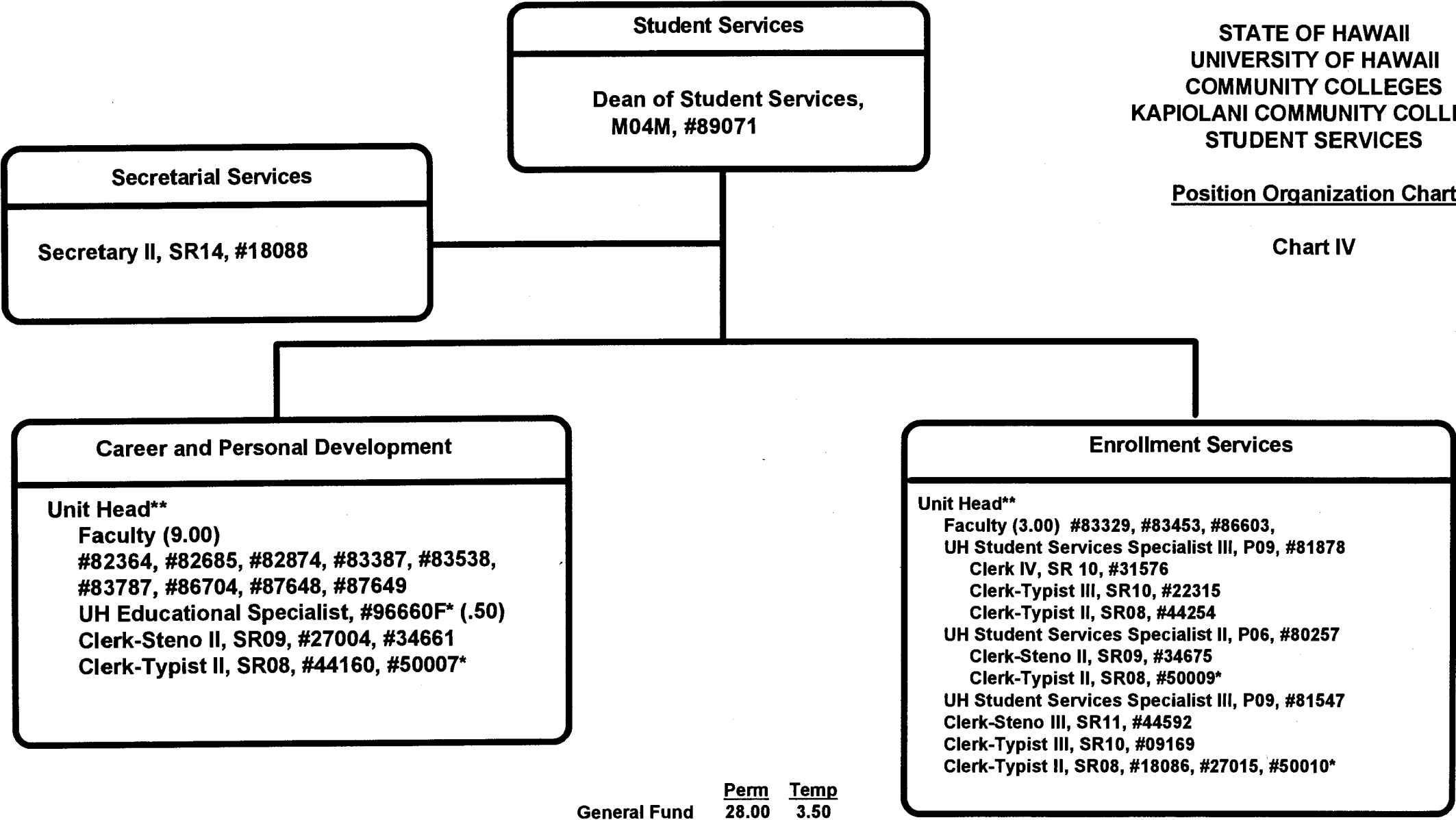


SENIOR VICE PRESIDENT / DATE
CHANCELLOR FOR COMMUNITY COLLEGES

STATE OF HAWAII
UNIVERSITY OF HAWAII
COMMUNITY COLLEGES
KAPIOLANI COMMUNITY COLLEGE
STUDENT SERVICES

Position Organization Chart

Chart IV



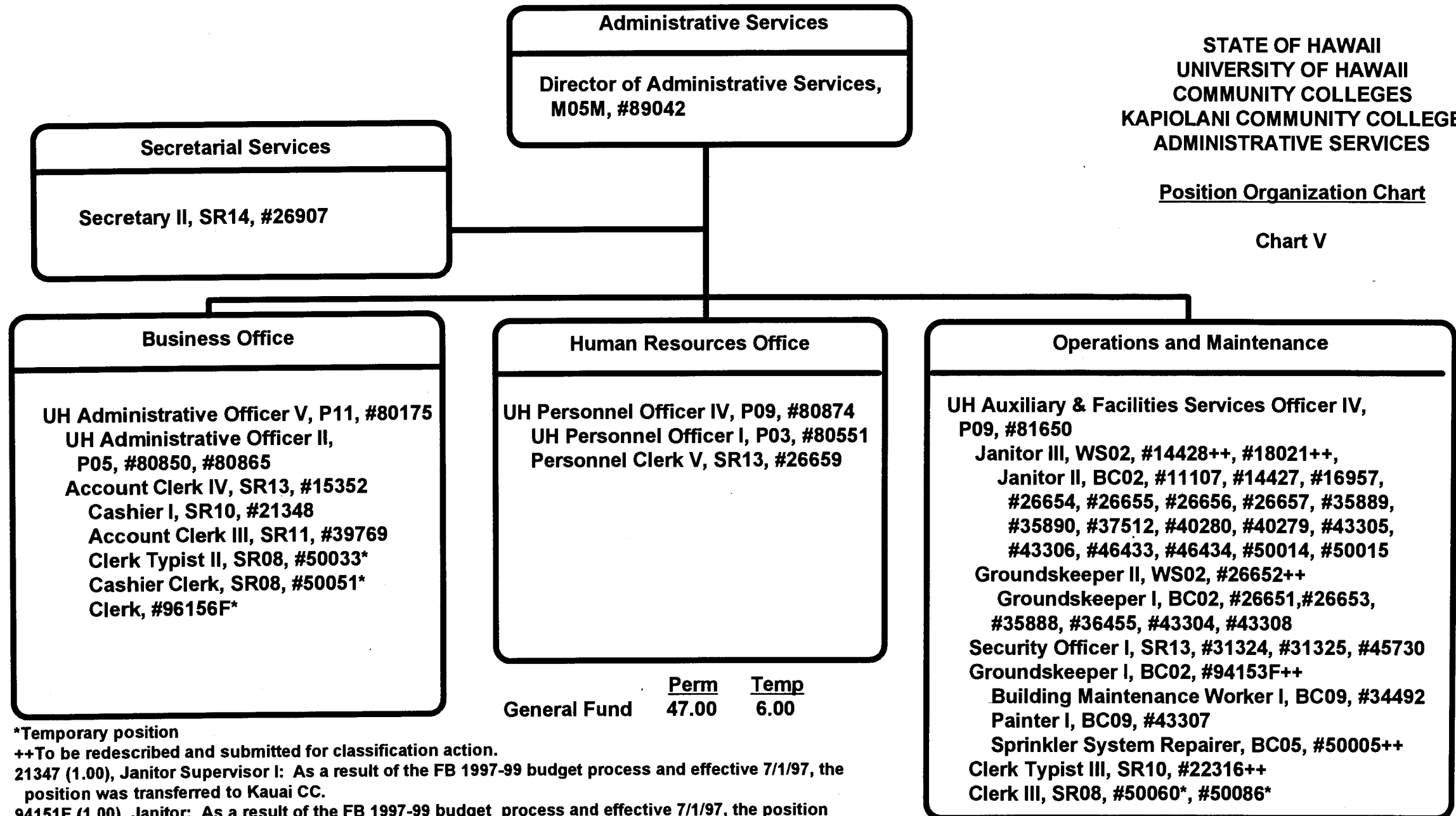
*Temporary position
**Unit Head appointed from faculty positions within the department.

CHART UPDATED
DATE JUL - 1 1997

STATE OF HAWAII
UNIVERSITY OF HAWAII
COMMUNITY COLLEGES
KAPIOLANI COMMUNITY COLLEGE
ADMINISTRATIVE SERVICES

Position Organization Chart

Chart V



*Temporary position

++To be redescribed and submitted for classification action.

21347 (1.00), Janitor Supervisor I: As a result of the FB 1997-99 budget process and effective 7/1/97, the position was transferred to Kauai CC.

94151F (1.00), Janitor: As a result of the FB 1997-99 budget process and effective 7/1/97, the position was transferred to Honolulu CC.

96160F* (1.00), Air Conditioning Mechanic: As a result of the FB 1997-99 budget process and effective 7/1/97, the position was authorized and will be established.

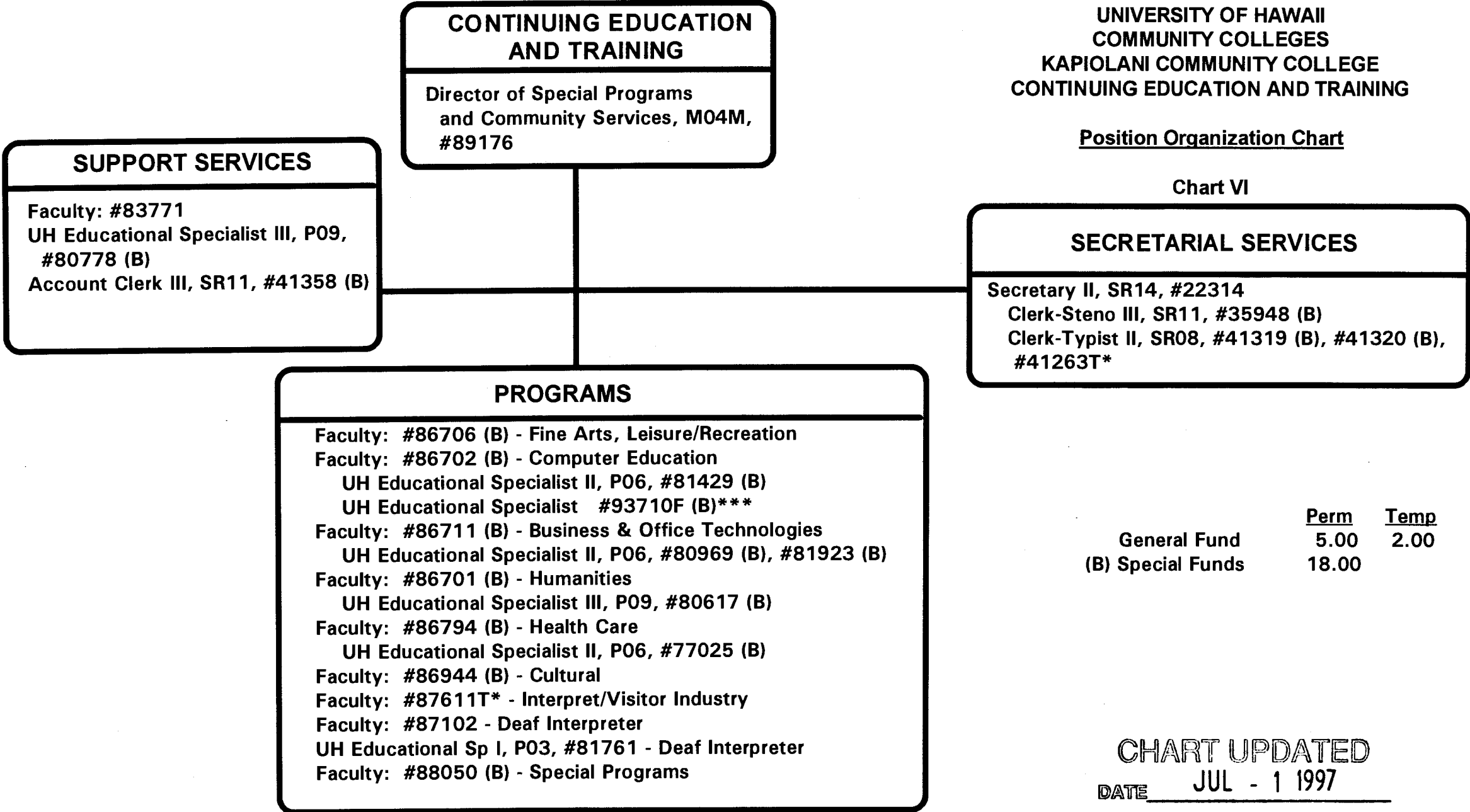
CHART UPDATED

DATE JUL - 1 1997

STATE OF HAWAII
UNIVERSITY OF HAWAII
COMMUNITY COLLEGES
KAPIOLANI COMMUNITY COLLEGE
CONTINUING EDUCATION AND TRAINING

Position Organization Chart

Chart VI



	<u>Perm</u>	<u>Temp</u>
General Fund	5.00	2.00
(B) Special Funds	18.00	

CHART UPDATED
DATE JUL - 1 1997

*Temporary position
***Position to be established

Educational Media Center

Unit Head**

Faculty #82386, #87603

UH Electronic Engineer I, P12, #81581

UH Computer Specialist III, P07, #81654

UH Electronic Technician II, P09, #80034

UH Electronic Technician I, P06, #81277

Audio Visual Technician I, BC07, #47350 (.50)

UH Media Specialist III, P07, #80694

UH Graphic Artist II, P05, #81060

Offset Press Operator III, BC09, #39797

Offset Press Operator II, BC08, #47346 (.50)

Clerk-Steno III, SR11, #21321

Clerk-Typist II, SR08, #42014 *

* Temporary position

**Unit Head is appointed from among faculty positions within the unit.

STATE OF HAWAII
UNIVERSITY OF HAWAII
COMMUNITY COLLEGES
KAPIOLANI COMMUNITY COLLEGE
INSTRUCTION

Position Organization Chart

Chart III G

	<u>Perm</u>	<u>Temp</u>
General Fund	11.00	1.00

SUPERSEDED

Date OCT 16 1997

CHART UPDATED

DATE JUL - 1 1997

Computing Center

UH Computer Specialist V, P11, #81384

UH Computer Specialist IV, P09, #80529, #81069

UH Computer Specialist III, P07, #80340

UH Educational Specialist II, P06, #80351, #81220T*

* Temporary position

STATE OF HAWAII
UNIVERSITY OF HAWAII
COMMUNITY COLLEGES
KAPIOLANI COMMUNITY COLLEGE
INSTRUCTION

Position Organization Chart

Chart III I

	<u>Perm</u>	<u>Temp</u>
General Fund	5.00	1.00

SUPERSEDED

Date OCT 16 1997

CHART UPDATED

DATE JUL - 1 1997