

Office of the Senior Vice President
and
Chancellor for Community Colleges

STATE OF HAWAII
UNIVERSITY OF HAWAII
MAUI COMMUNITY COLLEGE

Organization Chart

Chart I

Office of the Provost
Chart II

Instruction
Chart III

Student Services
Chart IV

Administrative Services
Chart V

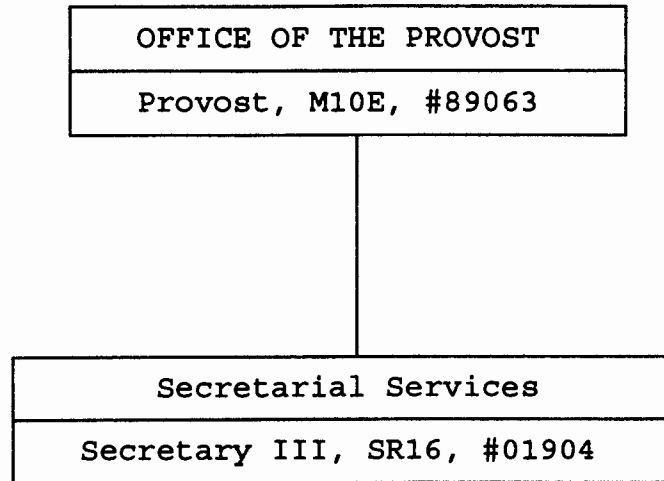
Office of Continuing
Education and Training
Chart VI

University of Hawaii
Center, Maui
Chart VII

APPROVED BY THE UNIVERSITY
BOARD OF REGENTS

FEB 20 1998

Date



STATE OF HAWAII
UNIVERSITY OF HAWAII
COMMUNITY COLLEGES
MAUI COMMUNITY COLLEGE
OFFICE OF THE PROVOST

Position Organization Chart

Chart II

CHART UPDATED
DATE JUL 1 1997

+Administrative Assistant, Position #93851F, (1.00) was abolished and deleted from the chart as a result of the FB 1997-99 budget process, effective 7/1/97.

	<u>Perm</u>
General Fund	2.00

APPROVED/DISAPPROVED:

Lytle S. Linnade 02/20/98
 SENIOR VICE PRESIDENT/ DATE
 CHANCELLOR FOR COMMUNITY COLLEGES

INSTRUCTION

Dean of Instruction, M06M, #89093

STATE OF HAWAII
 UNIVERSITY OF HAWAII
 COMMUNITY COLLEGES
 MAUI COMMUNITY COLLEGE
 INSTRUCTION

Position Organization Chart

Chart III

Secretarial Services

Secretary II, SR14, #17844
 Clerk Steno II, SR09, #33898, #34832

Assistant Dean of Instruction, M03M, #89192
 Clerk Steno II, SR09, #40565

Library

Faculty (Librarians 3.00),
 #82128, #83419, #86139
 Library Technician VI, SR13,
 #15558
 Library Technician V, SR11,
 #26906
 Library Assistant IV, SR09,
 #22516

Media

Faculty, #84671
 UH Media Specialist IV, P09,
 #80436
 UH Media Specialist III, P07,
 #81026
 UH Media Specialist I, P03,
 #81007
 UH Electronic Technician II,
 P09, #80982
 UH Electronic Technician I,
 P06, #81759
 UH Media Specialist II, P05,
 #81204
 Clerk Steno III, SR11, #21205

General Education

Math/Science Division

Chairperson**

Faculty (13.50), #82356, #82754,
 #83018, #83290, #83632, #83833,
 #83866, #84011, #84137, #84570,
 #86073, #86725, #86932, #82666 (.50)

UH Educational Specialist I, P03, #81658

UH Educational & Academic Support

Specialist, P01, #81730, #81731

Account Clerk III, SR11, #35751

Language Arts Division

Chairperson**

Faculty (10.00), #82199, #82408, #82636,
 #82958, #83898, #84148, #84367, #84482,
 #84998, #85074

Faculty, #83093\$

UH Educational Specialist I, P03, #81214

Clerk Steno II, SR09, #47721

Social Science/Humanities Division

Chairperson**

Faculty (15.00), #82665, #82778, #82798,
 #83206, #83377, #83546, #83613, #84214,
 #84312, #84997, #84999, #86887T*, #86888T*,
 #87088, #83628 (.50), #87154 (.50)

Outreach

Faculty (2.00), #86630, #86816

Vocational Education

Business Division

Chairperson**

Faculty (12.00), #82391, #82410,
 #82493, #82559, #82608, #83211,
 #83274, #83325, #83465, #83739,
 #84084, #84996

Clerk Steno II, SR09, #47720

Nursing Division

Chairperson**

Faculty (13.50), #82297, #83108,
 #84174, #84412, #84465, #86681,
 #86682, #86683, #86727, #86729,
 #86730, #86731, #86732, #86734 (.50)

Clerk Steno II, SR09, #28848

Clerk Typist II, SR08, #41707 (.50)

Vocational/Technical Division

Chairperson**

Faculty (8.00), #82020, #83530,
 #83822, #84025, #84124, #84339,
 #84345, #86723

Cooperative Education

Faculty (2.50), #86623, #87085
 #84083 (.50)

Clerk Typist II, SR08, #46225

	Perm	Temp
General Fund	105.00	2.00

*Temporary Position

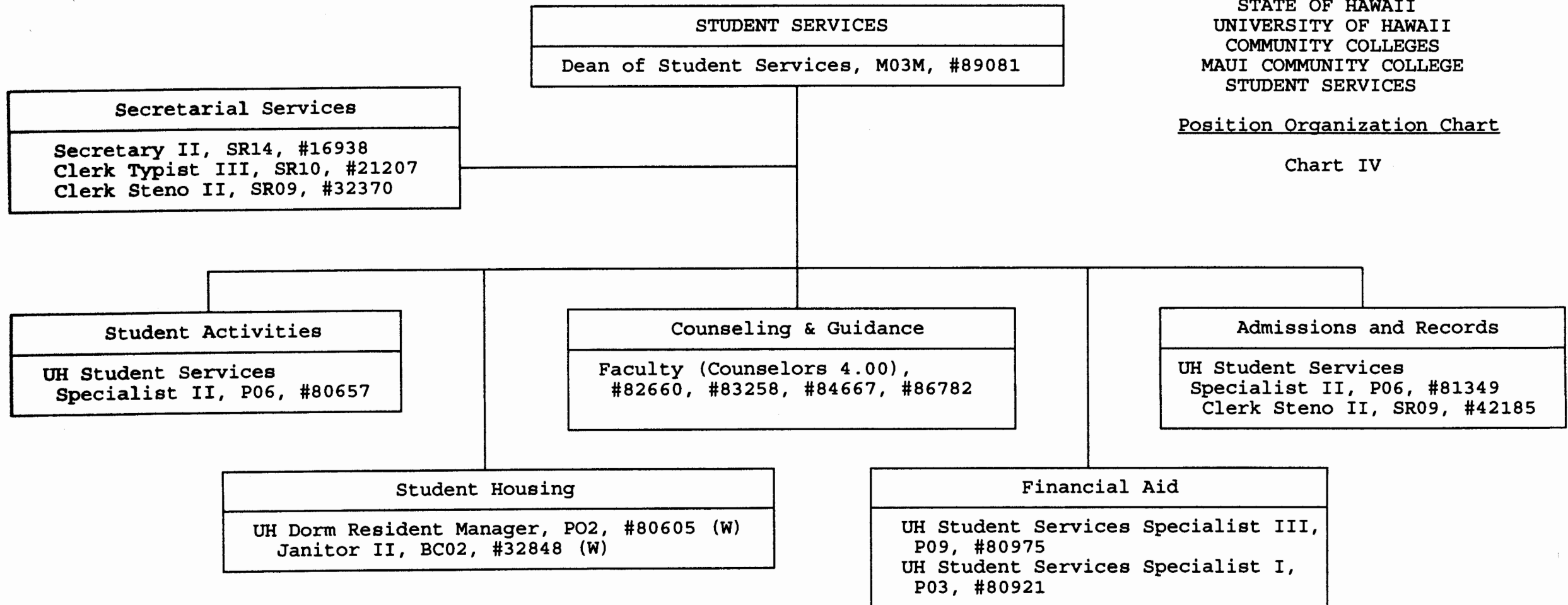
**Chairperson is appointed from among instructional positions within the division.

\$As a result of the FB 1997-99 budget process the position was transferred from Honolulu CC, effective 7/1/97.

STATE OF HAWAII
UNIVERSITY OF HAWAII
COMMUNITY COLLEGES
MAUI COMMUNITY COLLEGE
STUDENT SERVICES

Position Organization Chart

Chart IV



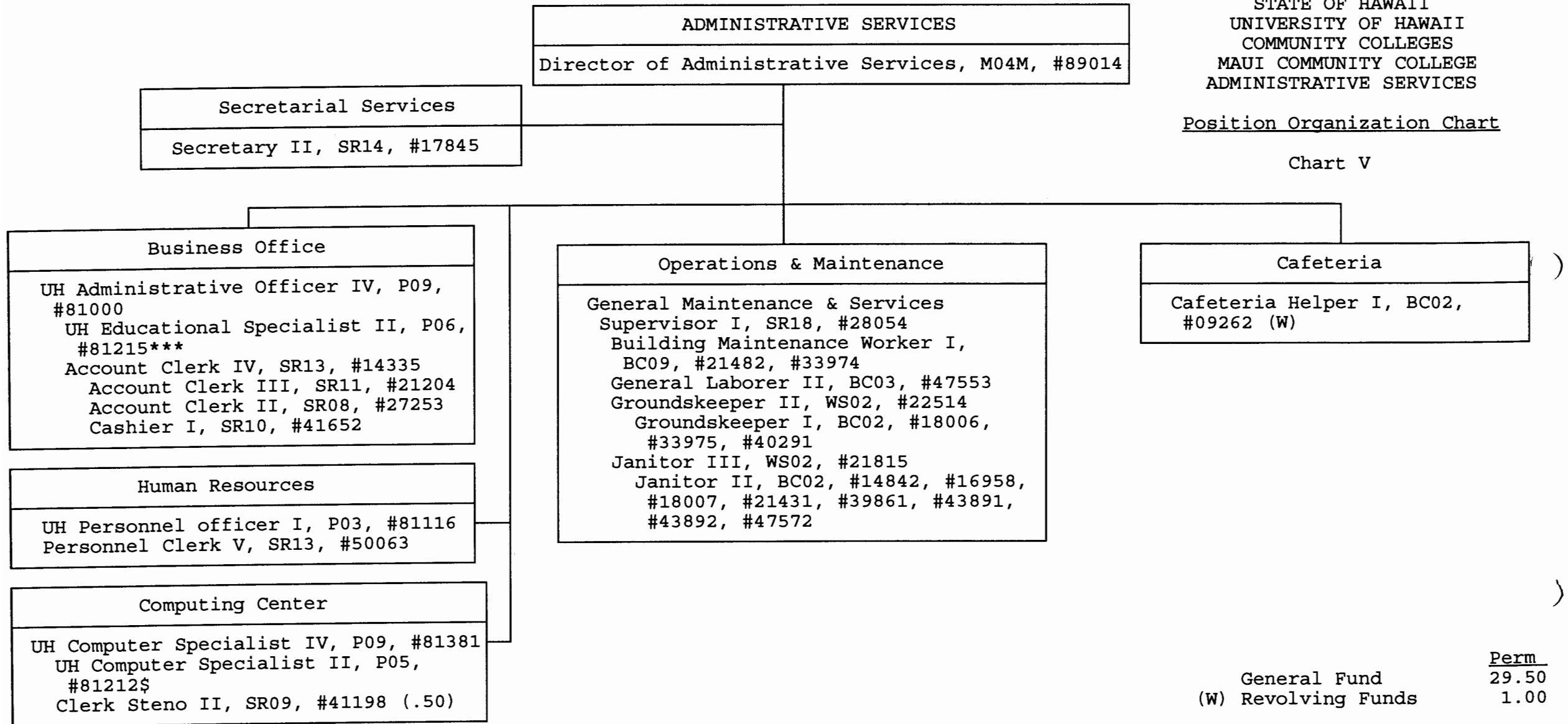
	<u>Perm</u>
General Fund	13.00
(W) Revolving Funds	2.00

CHART UPDATED
DATE JUL 1 1997

STATE OF HAWAII
UNIVERSITY OF HAWAII
COMMUNITY COLLEGES
MAUI COMMUNITY COLLEGE
ADMINISTRATIVE SERVICES

Position Organization Chart

Chart V

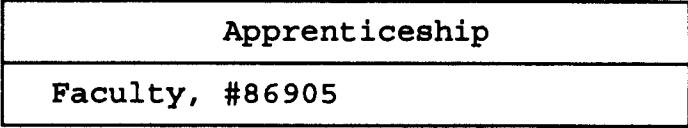
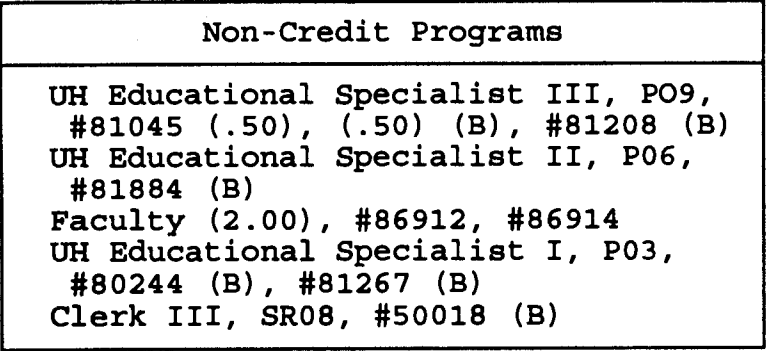
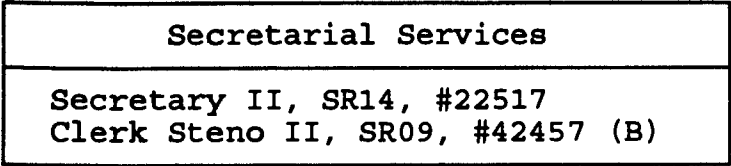
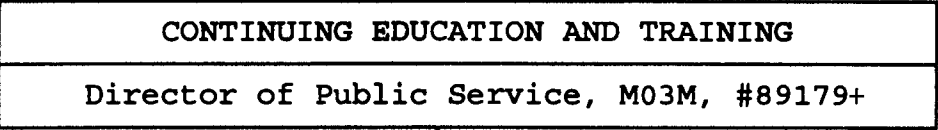


	<u>Perm</u>
General Fund	29.50
(W) Revolving Funds	1.00

\$ As a result of the FB 1997-99 budget process the position was combined with #93304F (.50), to make a full-time position.

***As a result of the FB 1997-99 budget process the position was transferred to Admin. Serv. as a Admin. & Fiscal Support Specialist and a redescription to be processed.

CHART UPDATED
JUL 01 1997
DATE _____



STATE OF HAWAII
UNIVERSITY OF HAWAII
COMMUNITY COLLEGES
MAUI COMMUNITY COLLEGE
CONTINUING EDUCATION
AND TRAINING

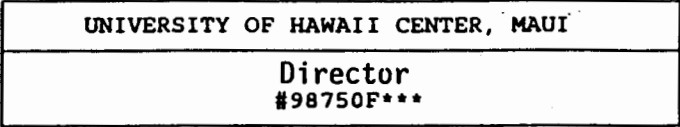
Position Organization Chart

Chart VI

+To be retitled.

CHART UPDATED
JUL 1 1997
DATE

	Perm
General Fund	5.50
(B) Special Funds	6.50



STATE OF HAWAII
UNIVERSITY OF HAWAII
MAUI COMMUNITY COLLEGE
UNIVERSITY OF HAWAII CENTER, MAUI

Position Organization Chart
Chart VII

APPROVED BY THE UNIVERSITY
BOARD OF REGENTS
FEB 20 1998

Date

General Fund	<u>Perm</u> 2.00
--------------	---------------------

2/20/98 ***To be established.
Classification and title to be determined
pending approval of proposed reorganization.

OFFICE OF THE SENIOR VICE PRESIDENT
AND
CHANCELLOR FOR COMMUNITY COLLEGES

STATE OF HAWAII
UNIVERSITY OF HAWAII
COMMUNITY COLLEGES
MAUI COMMUNITY COLLEGE

Organization Chart

Chart I

OFFICE OF THE PROVOST
Chart II

INSTRUCTION

Chart III

STUDENT SERVICES

Chart IV

ADMINISTRATIVE SERVICES

Chart V

CONTINUING EDUCATION
AND TRAINING
Chart VI

CHART UPDATED

DATE JUL 1 1997

SUPERSEDED

Date FEB 20 1998

	<u>Perm</u>	<u>Temp</u>
General Fund	155.00	3.00
(B) Special Funds	6.50	
(W) Revolving Funds	3.00	

CHART UPDATED
DATE JUL 01 1997

STATE OF HAWAII
UNIVERSITY OF HAWAII
COMMUNITY COLLEGES
MAUI COMMUNITY COLLEGE
INSTRUCTION

INSTRUCTION
Dean of Instruction, M06M, #89093

Position Organization Chart

Chart III

SUPERSEDED
Date FEB 20 1998

Secretarial Services
Secretary II, SR14, #17844
Clerk Steno II, SR09, #33898,
#34832

Assistant Dean of Instruction, M03M, #89192
Clerk Steno II, SR09, #40565

Maui MBA
Junior Specialist, S3, #85110T*/****

Library
Faculty (Librarians 3.00),
#82128, #83419, #86139
Library Technician VI, SR13,
#15558
Library Technician V, SR11,
#26906
Library Assistant IV, SR09,
#22516

Media
Faculty, #84671
UH Media Specialist IV, P09,
#80436
UH Media Specialist III, P07,
#81026
UH Media Specialist I, P03,
#81007
UH Electronic Technician II,
P09, #80982
UH Electronic Technician I,
P06, #81759
UH Media Specialist II, P05,
#81204
Clerk Steno III, SR11, #21205

General Education
Math/Science Division
Chairperson**
Faculty (13.50), #82356, #82754,
#83018, #83290, #83632, #83833,
#83866, #84011, #84137, #84570,
#86073, #86725, #86932, #82666 (.50)
UH Educational Specialist I, P03, #81658
UH Educational & Academic Support
Specialist, P01, #81730, #81731
Account Clerk III, SR11, #35751
Language Arts Division
Chairperson**
Faculty (10.00), #82199, #82408, #82636,
#82958, #83898, #84148, #84367, #84482,
#84998, #85074
Faculty, #83093\$
UH Educational Specialist I, P03, #81214
Clerk Steno II, SR09, #47721
Social Science/Humanities Division
Chairperson**
Faculty (15.00), #82665, #82778, #82798,
#83206, #83377, #83546, #83613, #84214,
#84312, #84997, #84999, #86887T*, #86888T*,
#87088, #83628 (.50), #87154 (.50)
Outreach
Faculty (2.00), #86630, #86816

Vocational Education
Business Division
Chairperson**
Faculty (12.00), #82391, #82410,
#82493, #82559, #82608, #83211,
#83274, #83325, #83465, #83739,
#84084, #84996
Clerk Steno II, SR09, #47720
Nursing Division
Chairperson**
Faculty (13.50), #82297, #83108,
#84174, #84412, #84465, #86681,
#86682, #86683, #86727, #86729,
#86730, #86731, #86732, #86734 (.50)
Clerk Steno II, SR09, #28848
Clerk Typist II, SR08, #41707 (.50)
Vocational/Technical Division
Chairperson**
Faculty (8.00), #82020, #83530,
#83822, #84025, #84124, #84339,
#84345, #86723
Cooperative Education
Faculty (2.50), #86623, #87085
#84083 (.50)
Clerk Typist II, SR08, #46225

****UH Manoa program assigned to Maui CC.

*Temporary Position

**Chairperson is appointed from among instructional positions within the division.

\$As a result of the FB 1997-99 budget process the position was transferred from Honolulu CC, effective 7/1/97.

	<u>Perm</u>	<u>Temp</u>
General Fund	105.00	3.00