

STATE OF HAWAII
UNIVERSITY OF HAWAII
COMMUNITY COLLEGES
WINDWARD COMMUNITY COLLEGE

Organization Chart

Chart I

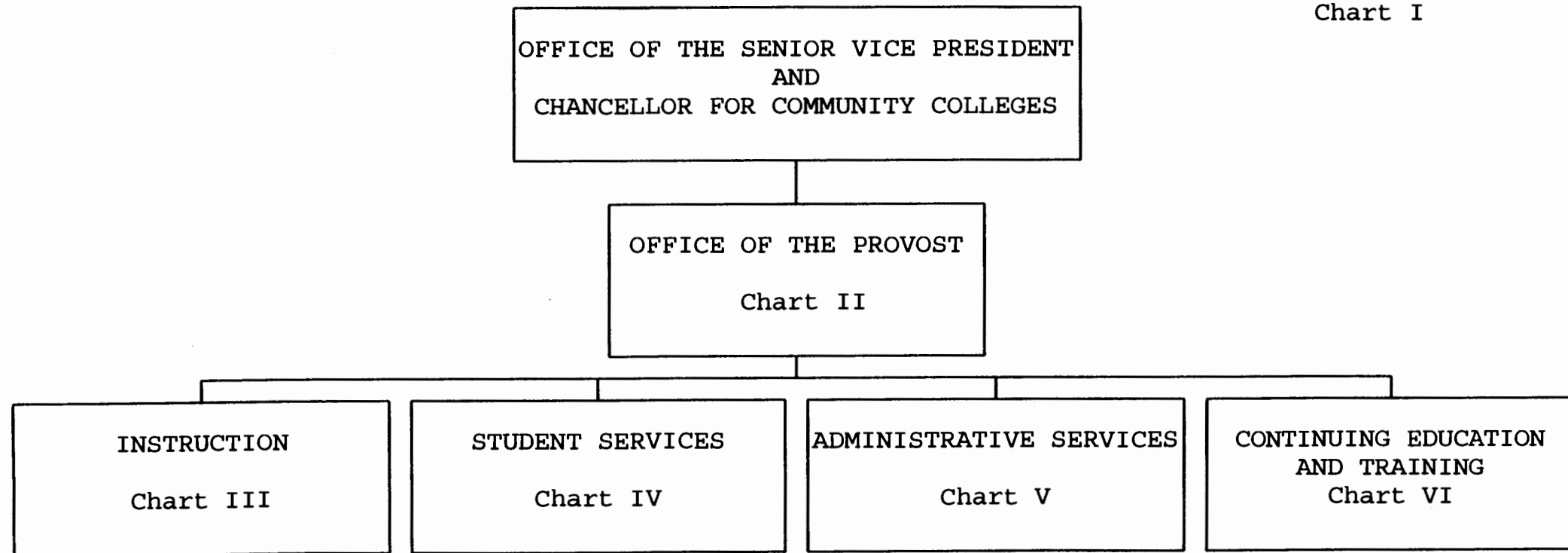


CHART UPDATED

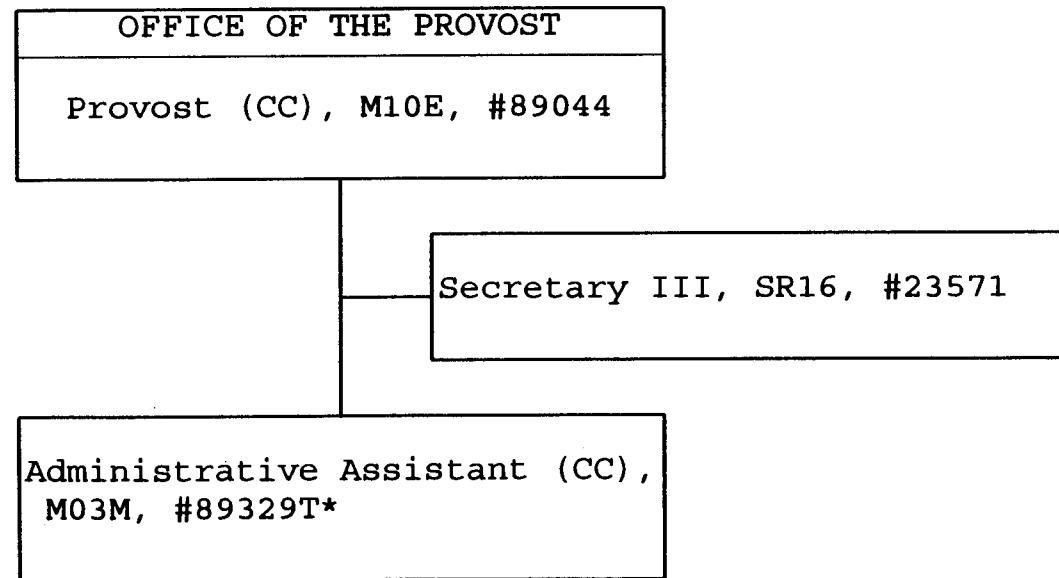
DATE JUL 1 1997

	Perm	Temp
General Fund	102.40	1.00

STATE OF HAWAII
UNIVERSITY OF HAWAII
COMMUNITY COLLEGES
WINDWARD COMMUNITY COLLEGE
OFFICE OF THE PROVOST

Position Organization Chart

Chart II



*Temporary Position

CHART UPDATED
JUL 1 1997
DATE _____

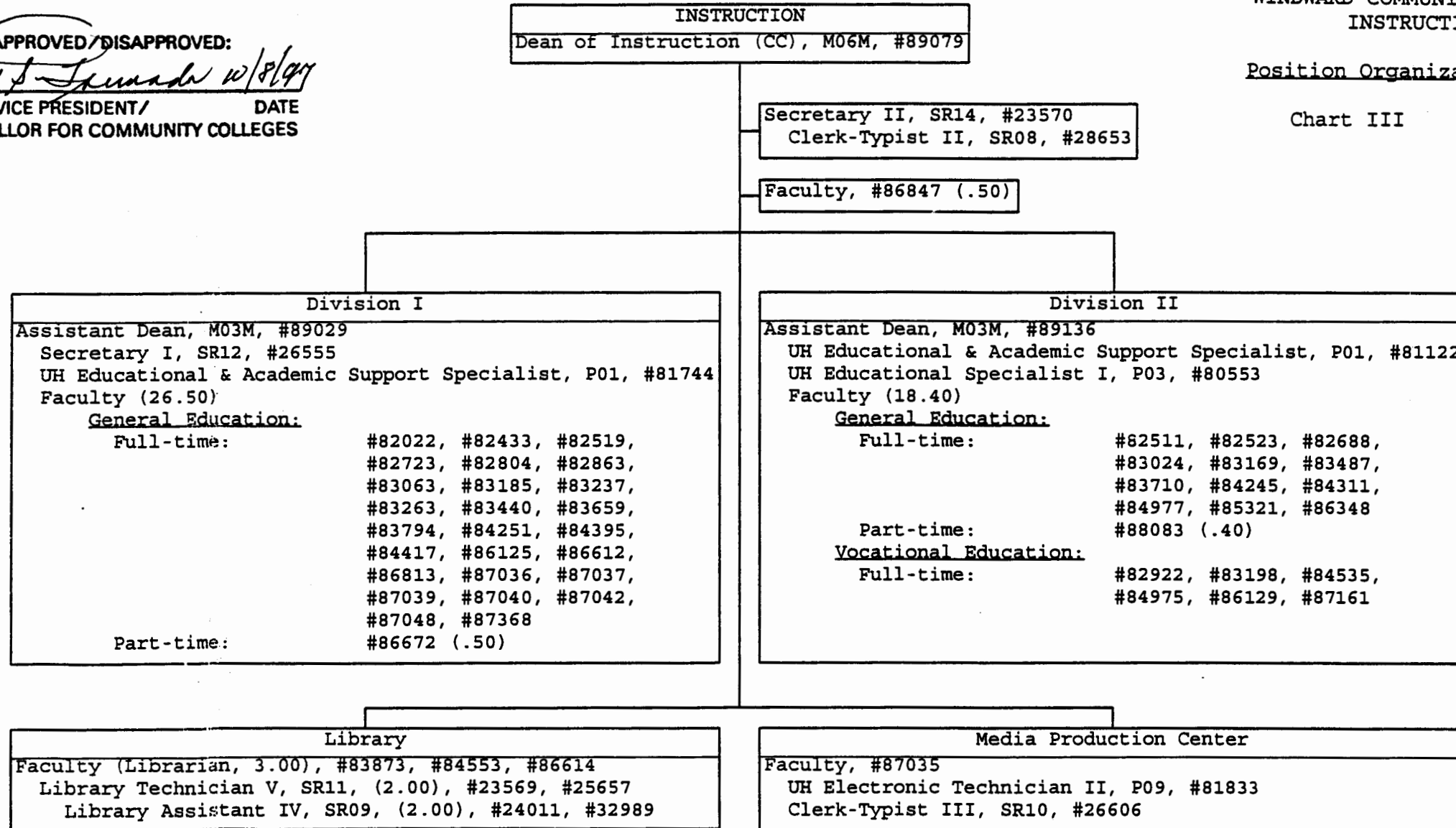
	<u>Perm</u>	<u>Temp</u>
General Fund	2.00	1.00

STATE OF HAWAII
UNIVERSITY OF HAWAII
COMMUNITY COLLEGES
WINDWARD COMMUNITY COLLEGE
INSTRUCTION

Position Organization Chart

Chart III

APPROVED/DISAPPROVED:
Jay S. Lumsden 10/8/97
DATE
SENIOR VICE PRESIDENT/
CHANCELLOR FOR COMMUNITY COLLEGES



General Fund Perm
64.40

STATE OF HAWAII
UNIVERSITY OF HAWAII
COMMUNITY COLLEGES
WINDWARD COMMUNITY COLLEGE
STUDENT SERVICES

Position Organization Chart

Chart IV

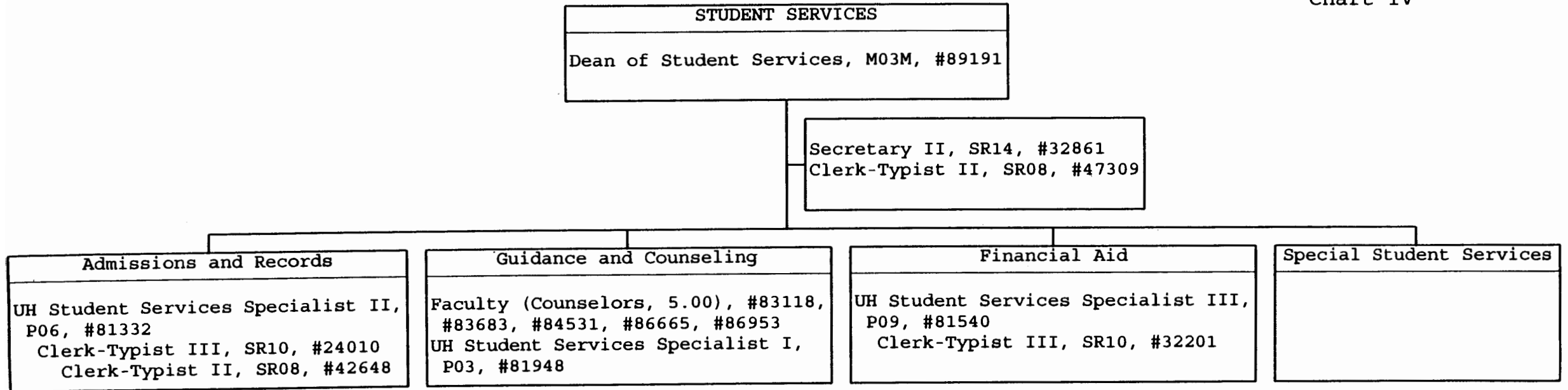


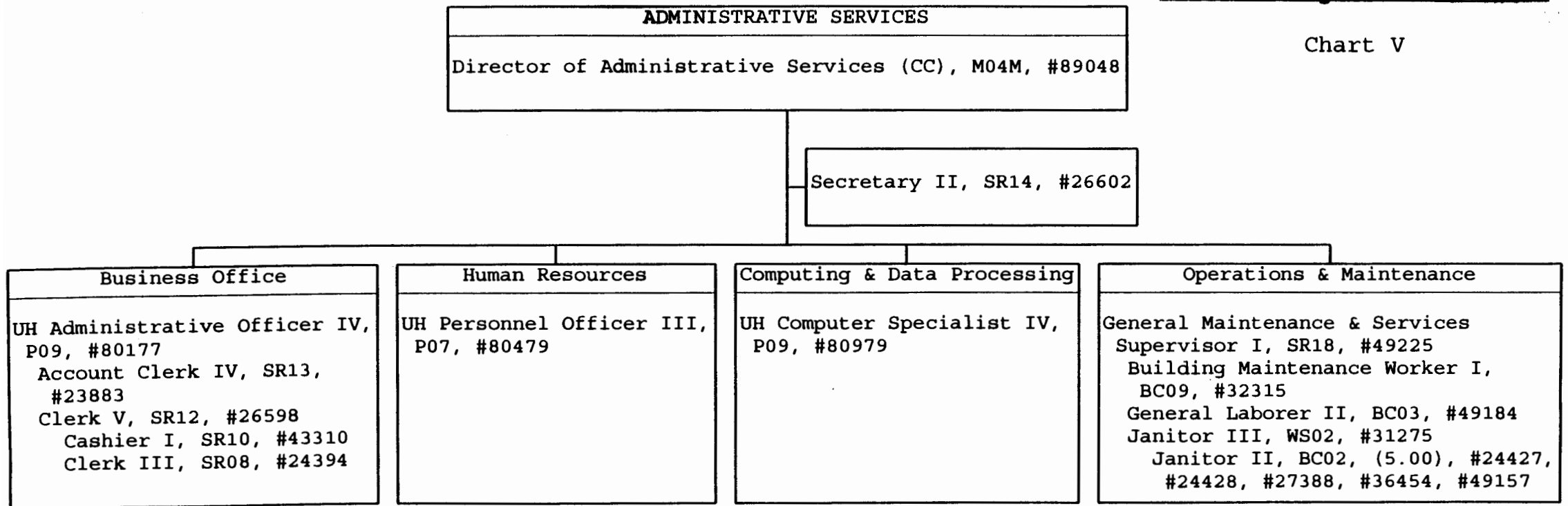
CHART UPDATED
DATE JUL 1 1997

General Fund 14.00 ^{Perm}

STATE OF HAWAII
 UNIVERSITY OF HAWAII
 COMMUNITY COLLEGES
 WINDWARD COMMUNITY COLLEGE
 ADMINISTRATIVE SERVICES

Position Organization Chart

Chart V



Secretary II, #25661\$
 As a result of the FB 1997-99 budget process and effective 7/1/97,
 the position was transferred to Hawaii Community College.

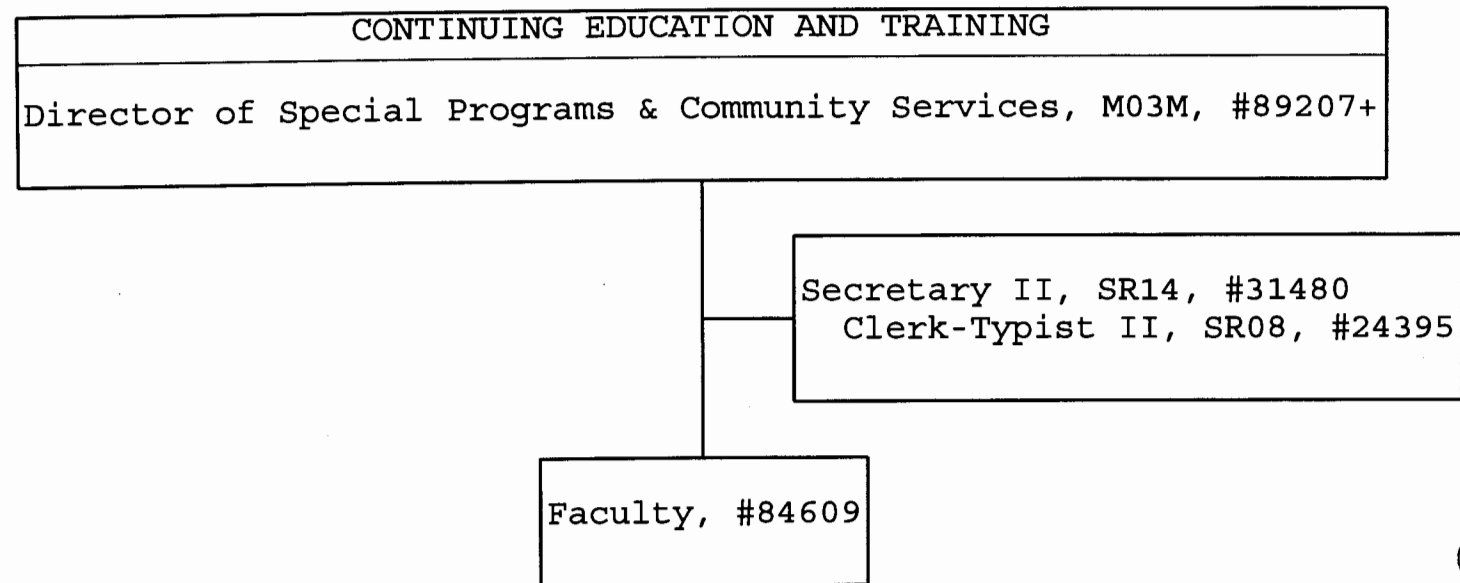
CHART UPDATED
 JUL 1 1997
 DATE _____

Perm
 General Fund 18.00

STATE OF HAWAII
UNIVERSITY OF HAWAII
COMMUNITY COLLEGES
WINDWARD COMMUNITY COLLEGE
CONTINUING EDUCATION AND TRAINING

Position Organization Chart

Chart VI



+To be retitled.

CHART UPDATED
DATE JUL 1 1997

	<u>Perm</u>
General Fund	4.00

STATE OF HAWAII
UNIVERSITY OF HAWAII
COMMUNITY COLLEGES
WINDWARD COMMUNITY COLLEGE
INSTRUCTION

Position Organization Chart

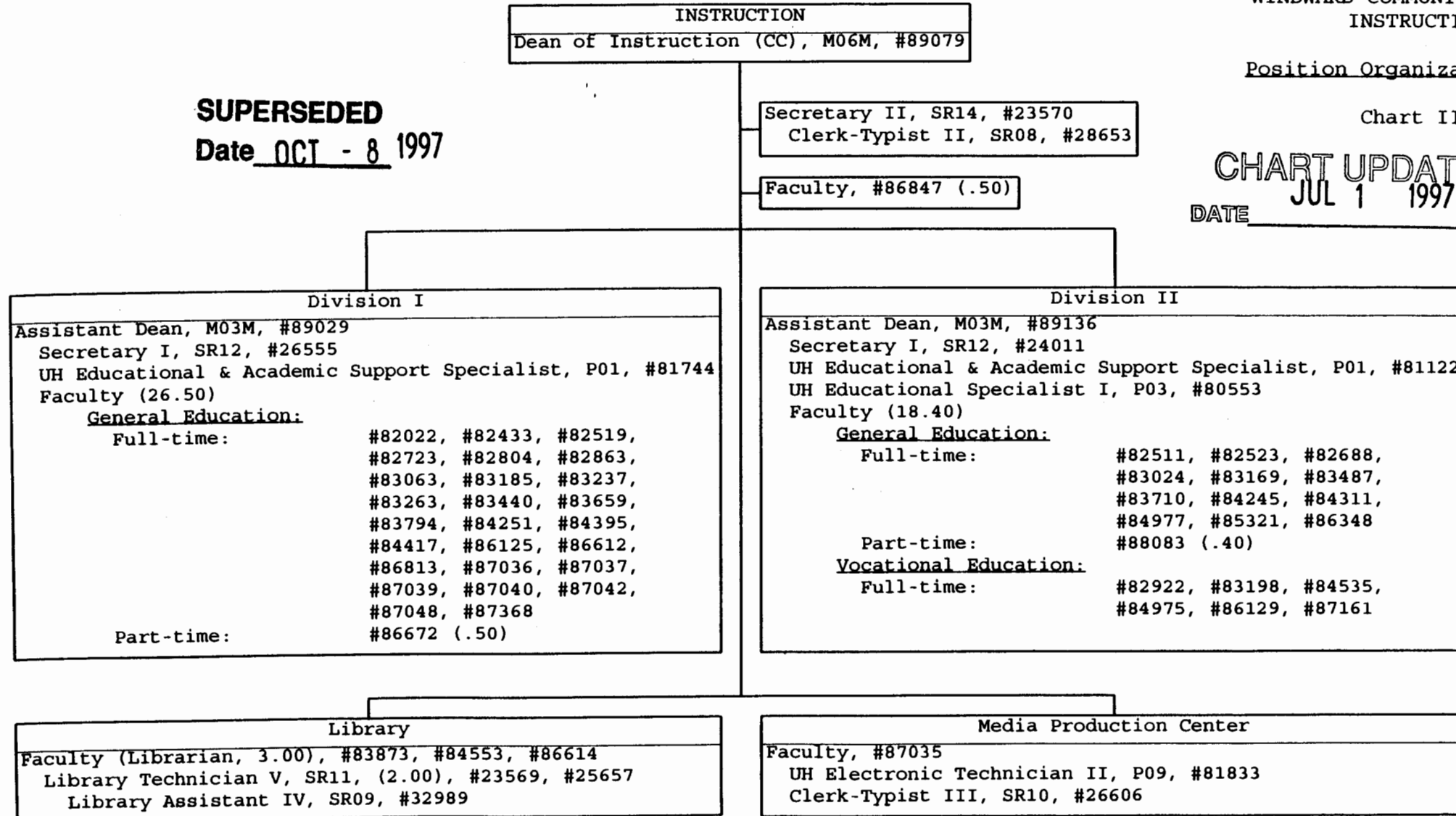
Chart III

CHART UPDATED
JUL 1 1997

DATE _____

SUPERSEDED

Date OCT - 8 1997



General Fund Perm
64.40