

STATE OF HAWAI'I  
UNIVERSITY OF HAWAI'I  
OFFICE OF THE SENIOR VICE PRESIDENT  
AND  
CHANCELLOR FOR COMMUNITY COLLEGES  
OFFICE OF INTERNATIONAL AFFAIRS

Organization Chart

Chart 1

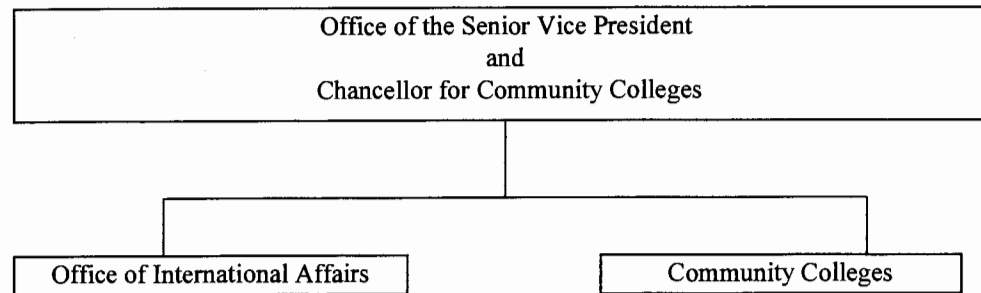
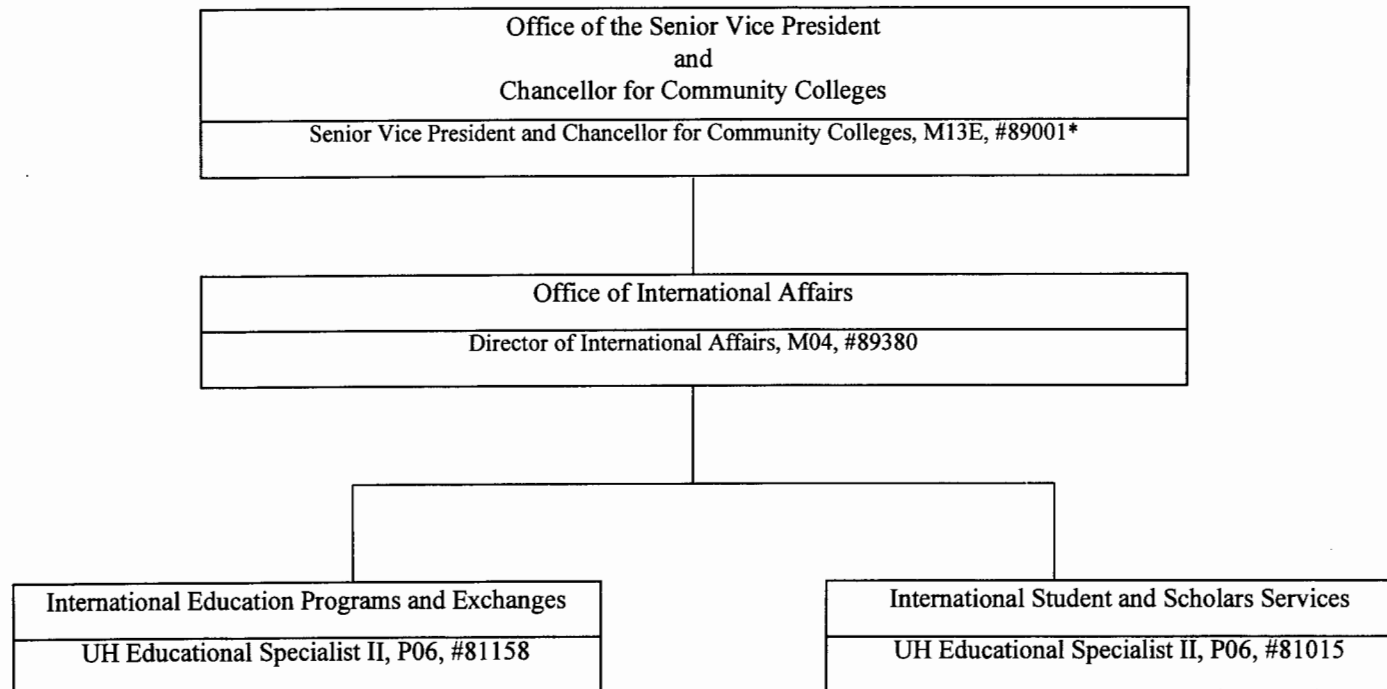


CHART UPDATED  
JUL - 1 1997  
DATE \_\_\_\_\_

STATE OF HAWAII  
UNIVERSITY OF HAWAII  
OFFICE OF THE SENIOR VICE PRESIDENT  
AND  
CHANCELLOR FOR COMMUNITY COLLEGES  
OFFICE OF INTERNATIONAL AFFAIRS

Position Organization Chart

Chart II



\* Not included in Perm position count.

Perm  
General Fund 3.00

CHART UPDATED  
DATE JUL - 1 1997