

STATE OF HAWAII
UNIVERSITY OF HAWAII
UNIVERSITY OF HAWAII AT MANOA

INTERCOLLEGIATE ATHLETICS

CHART IV

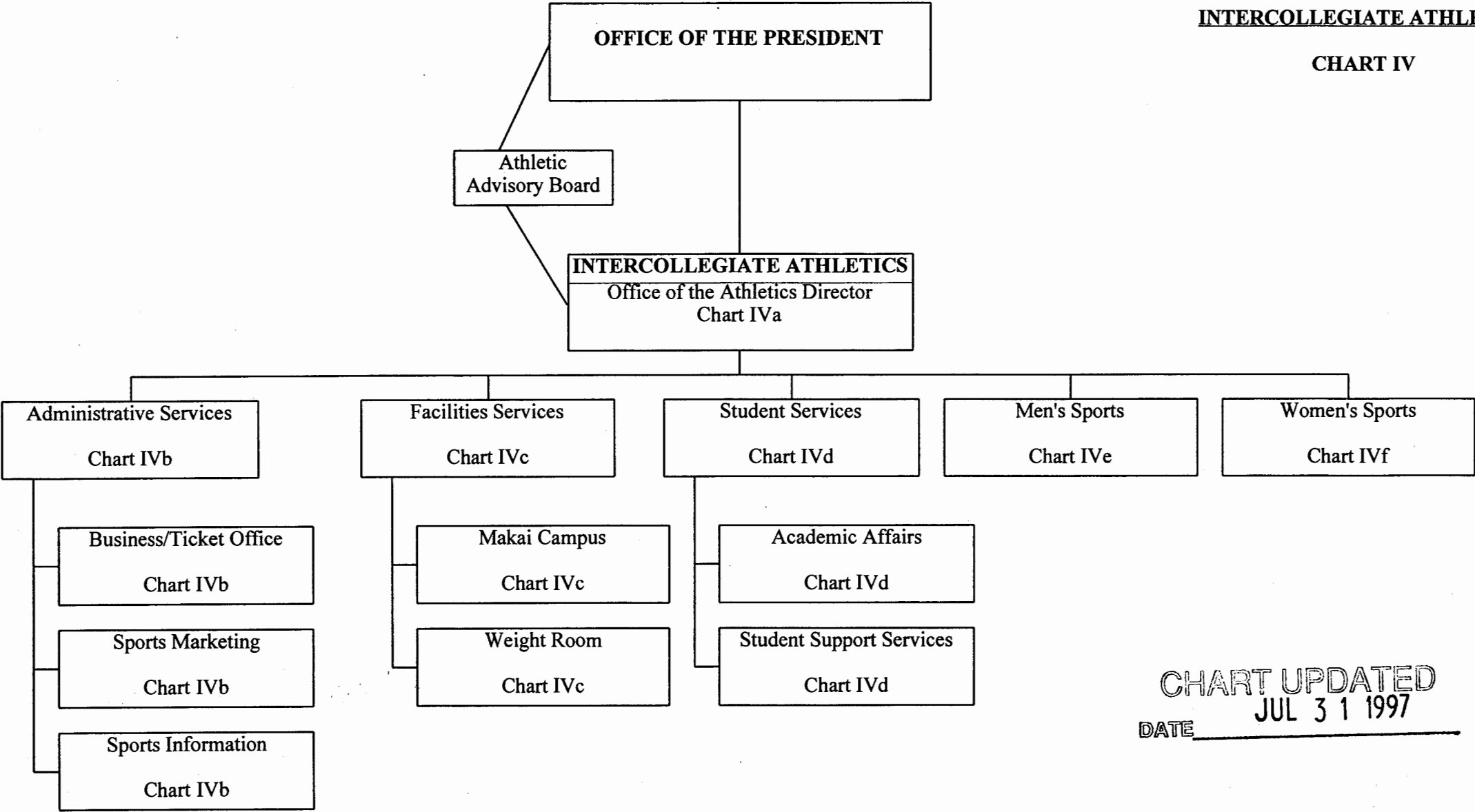


CHART UPDATED
JUL 31 1997
DATE _____

STATE OF HAWAII
UNIVERSITY OF HAWAII
UNIVERSITY OF HAWAII AT MANOA

INTERCOLLEGIATE ATHLETICS

CHART IVa

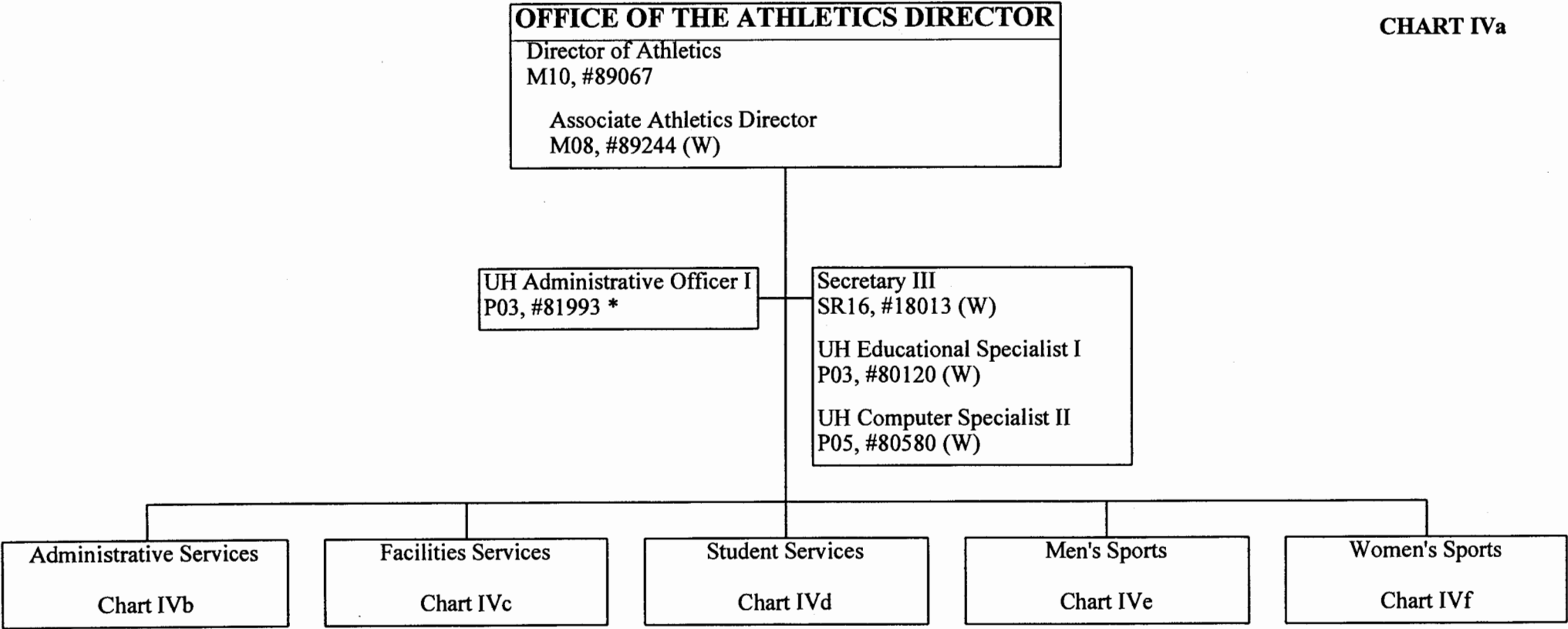


CHART UPDATED

DATE JUL 31 1997

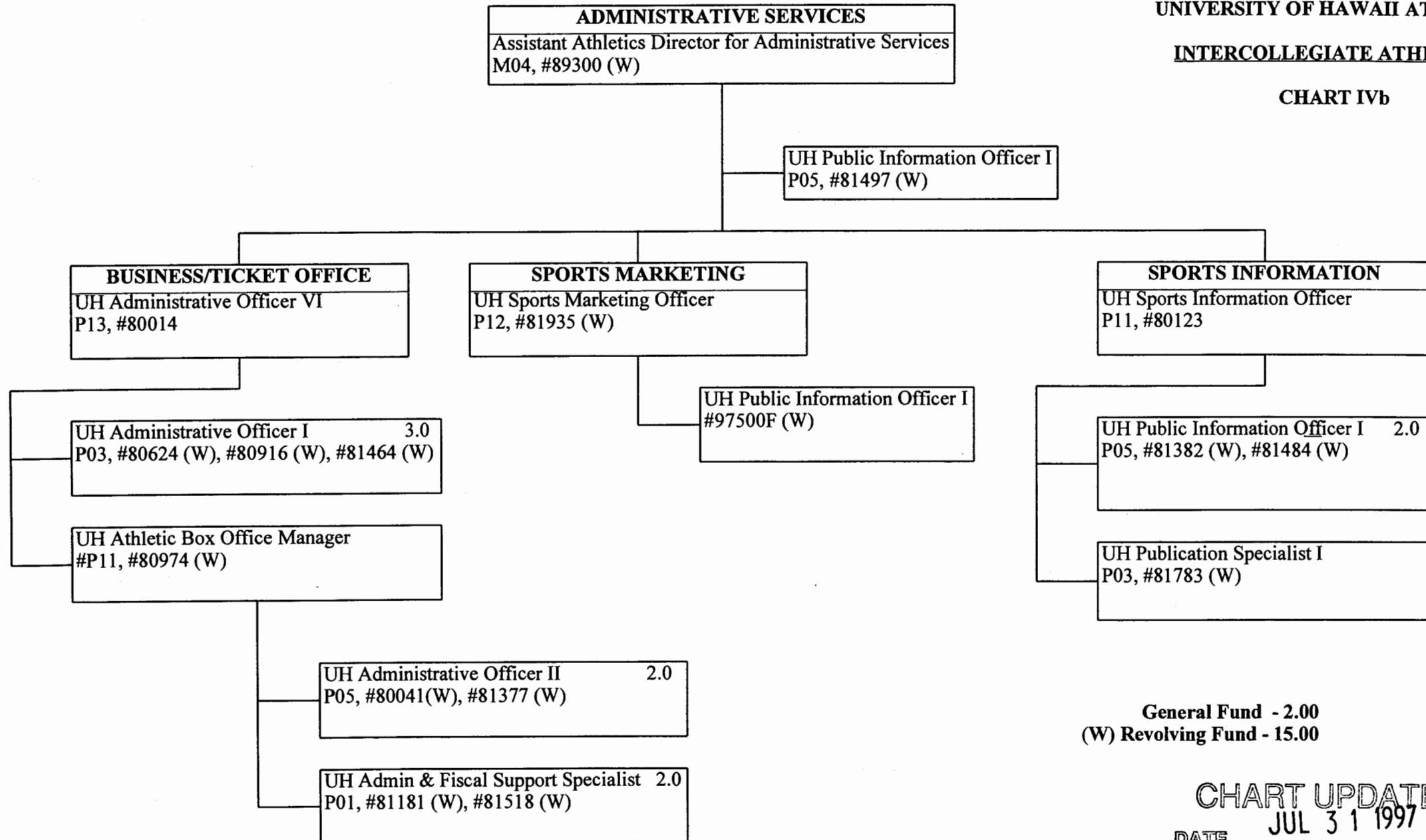
* Position #81993 Reports
Directly to the Associate
Athletics Director (Position #89244)

General Funds - 2.00
(W) Revolving Funds - 4.00

STATE OF HAWAII
UNIVERSITY OF HAWAII
UNIVERSITY OF HAWAII AT MANOA

INTERCOLLEGIATE ATHLETICS

CHART IVb



General Fund - 2.00
(W) Revolving Fund - 15.00

CHART UPDATED
JUL 31 1997
DATE _____

STATE OF HAWAII
UNIVERSITY OF HAWAII
UNIVERSITY OF HAWAII AT MANOA

INTERCOLLEGIATE ATHLETICS

CHART IVc

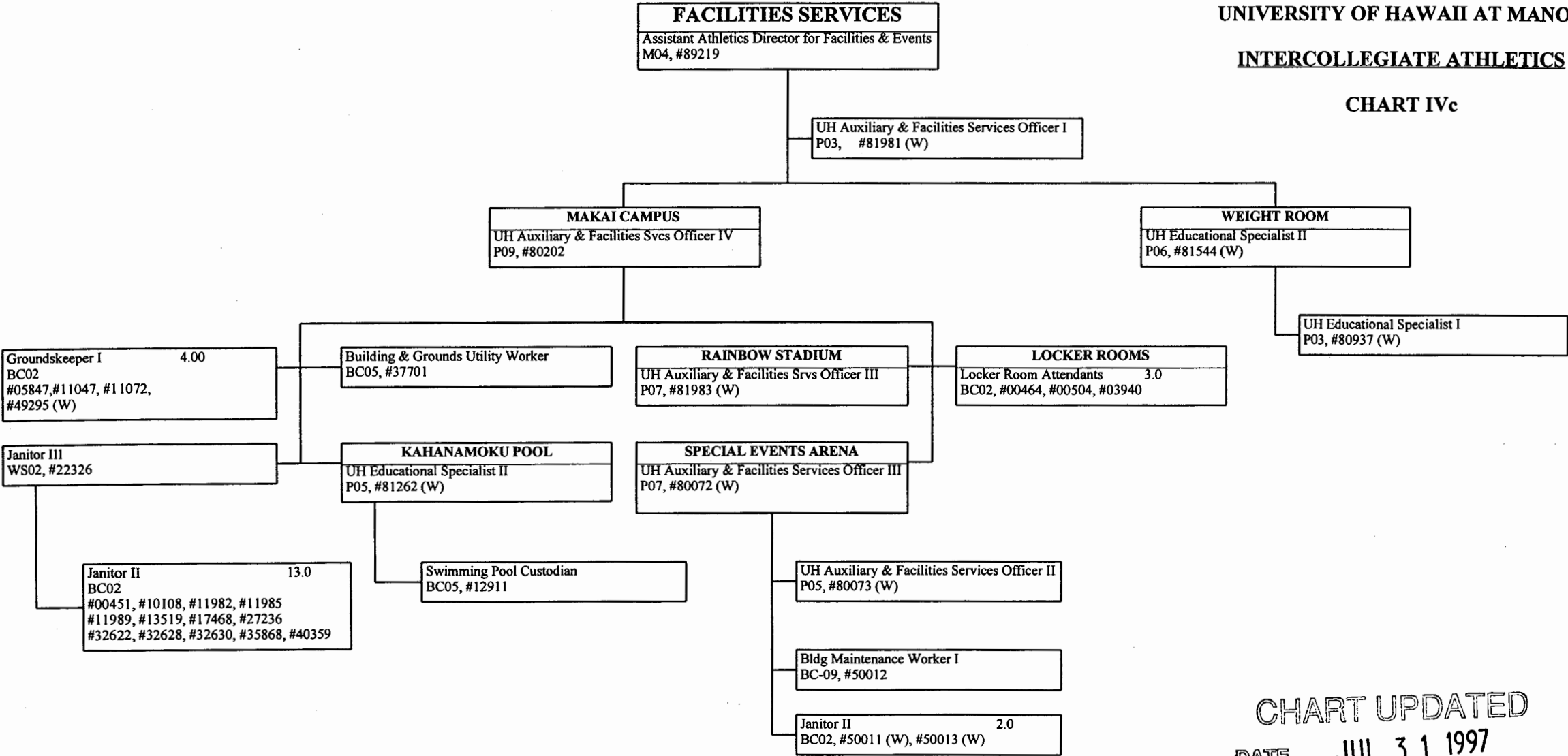


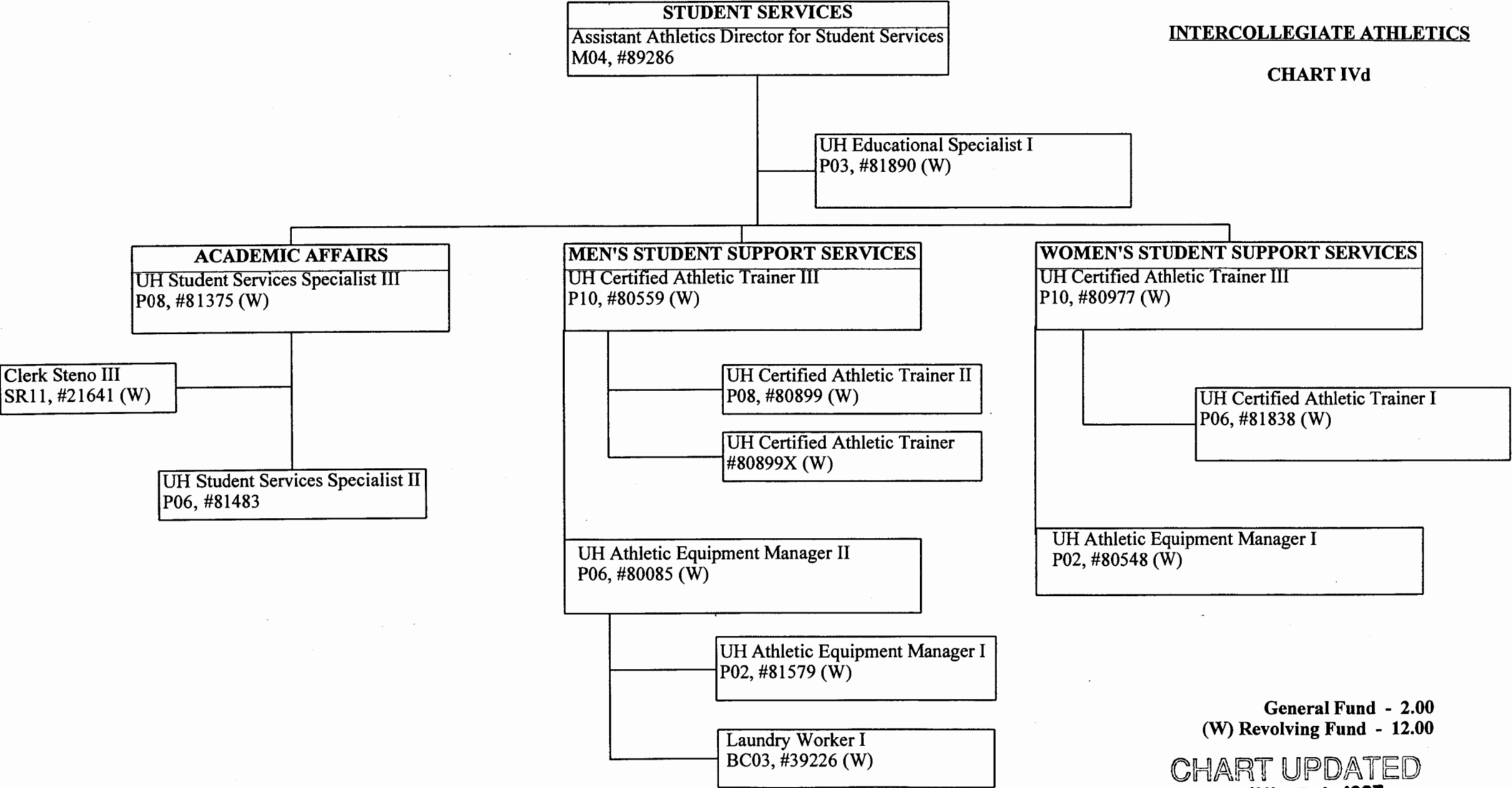
CHART UPDATED

DATE JUL 31 1997

General Fund - 25.00
Revolving Fund - 10.00

STATE OF HAWAII
UNIVERSITY OF HAWAII
UNIVERSITY OF HAWAII AT MANOA
INTERCOLLEGIATE ATHLETICS

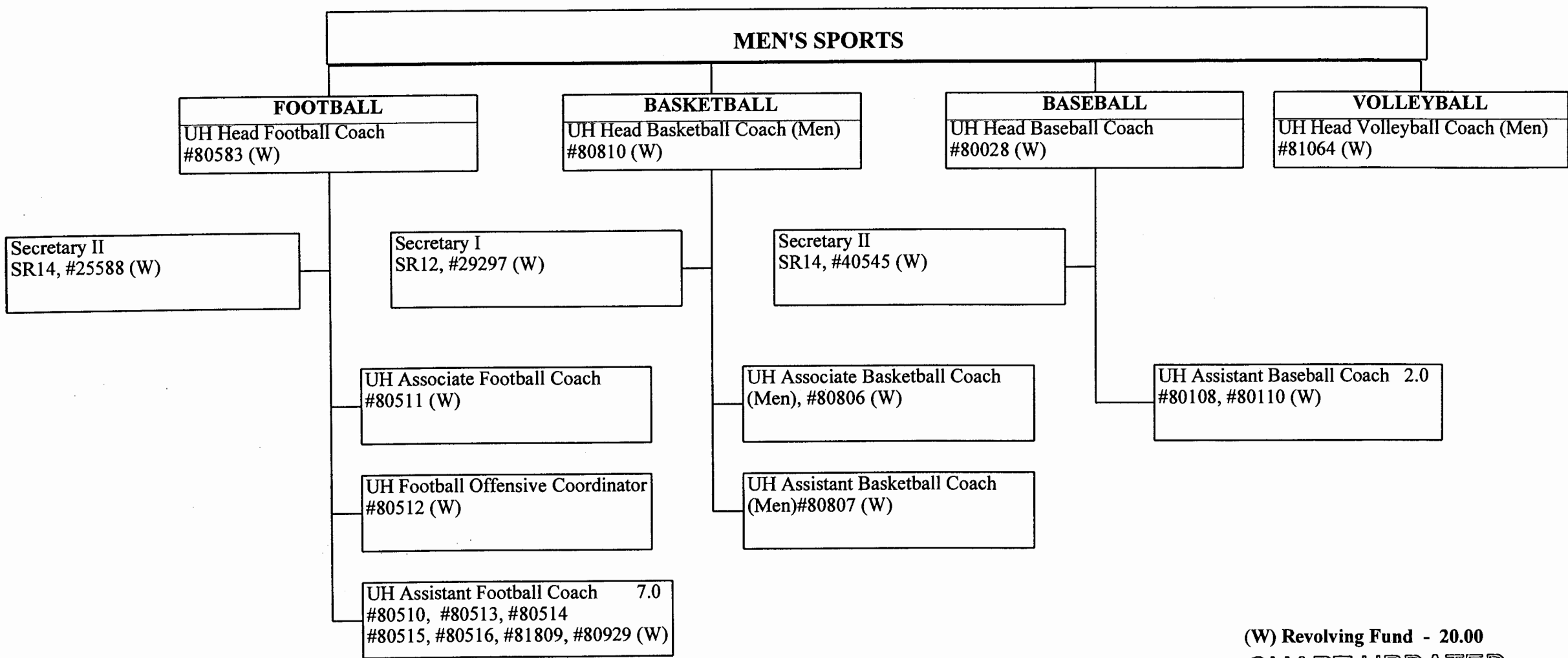
CHART IVd



General Fund - 2.00
(W) Revolving Fund - 12.00
CHART UPDATED
JUL 31 1997
DATE _____

STATE OF HAWAII
UNIVERSITY OF HAWAII
UNIVERSITY OF HAWAII AT MANOA
INTERCOLLEGIATE ATHLETICS

CHART IVe



(W) Revolving Fund - 20.00

CHART UPDATED
JUL 31 1997

DATE _____

STATE OF HAWAII
UNIVERSITY OF HAWAII
UNIVERSITY OF HAWAII AT MANOA

INTERCOLLEGIATE ATHLETICS

CHART IVf

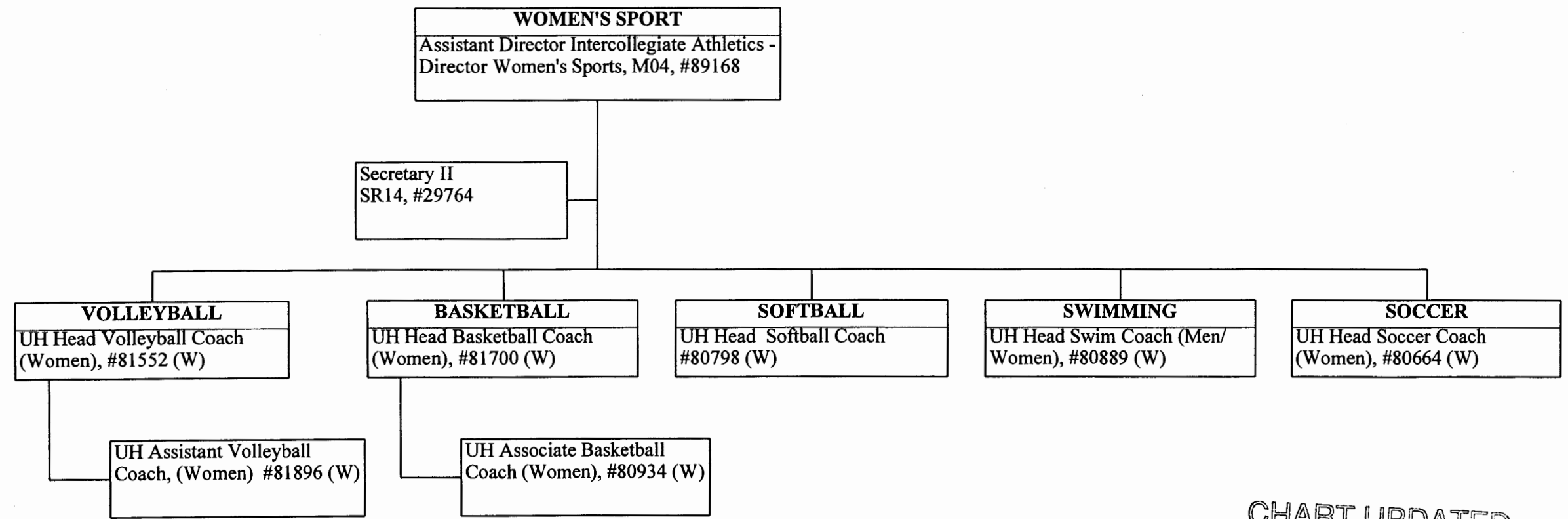


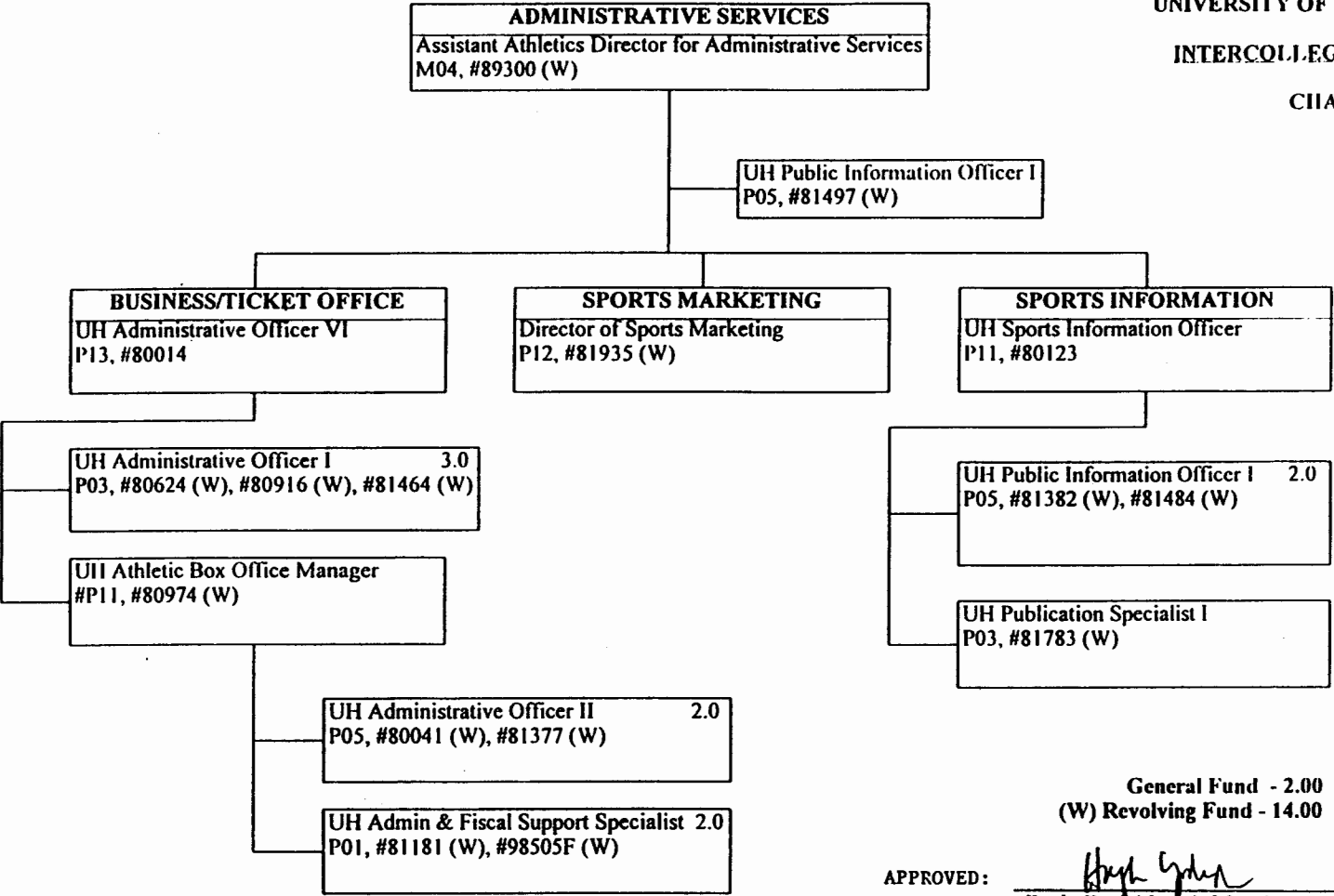
CHART UPDATED
DATE JUL 31 1997

General Fund - 2.00
Revolving Fund - 7.00

STATE OF HAWAII
UNIVERSITY OF HAWAII
UNIVERSITY OF HAWAII AT MANOA

INTERCOLLEGIATE ATHLETICS

CHART IVb



General Fund - 2.00
(W) Revolving Fund - 14.00

APPROVED:

Hugh Yoshida
Hugh Yoshida, Athletics Director

DATE:

7/25/97

RECEIVED FROM OFF. HUMAN RES.
DISREGARD NOT AS CURRENT
AS JULY 31, 1997 CHT.