

State of Hawaii
University of Hawaii at Manoa
College of Business Administration

Chart I

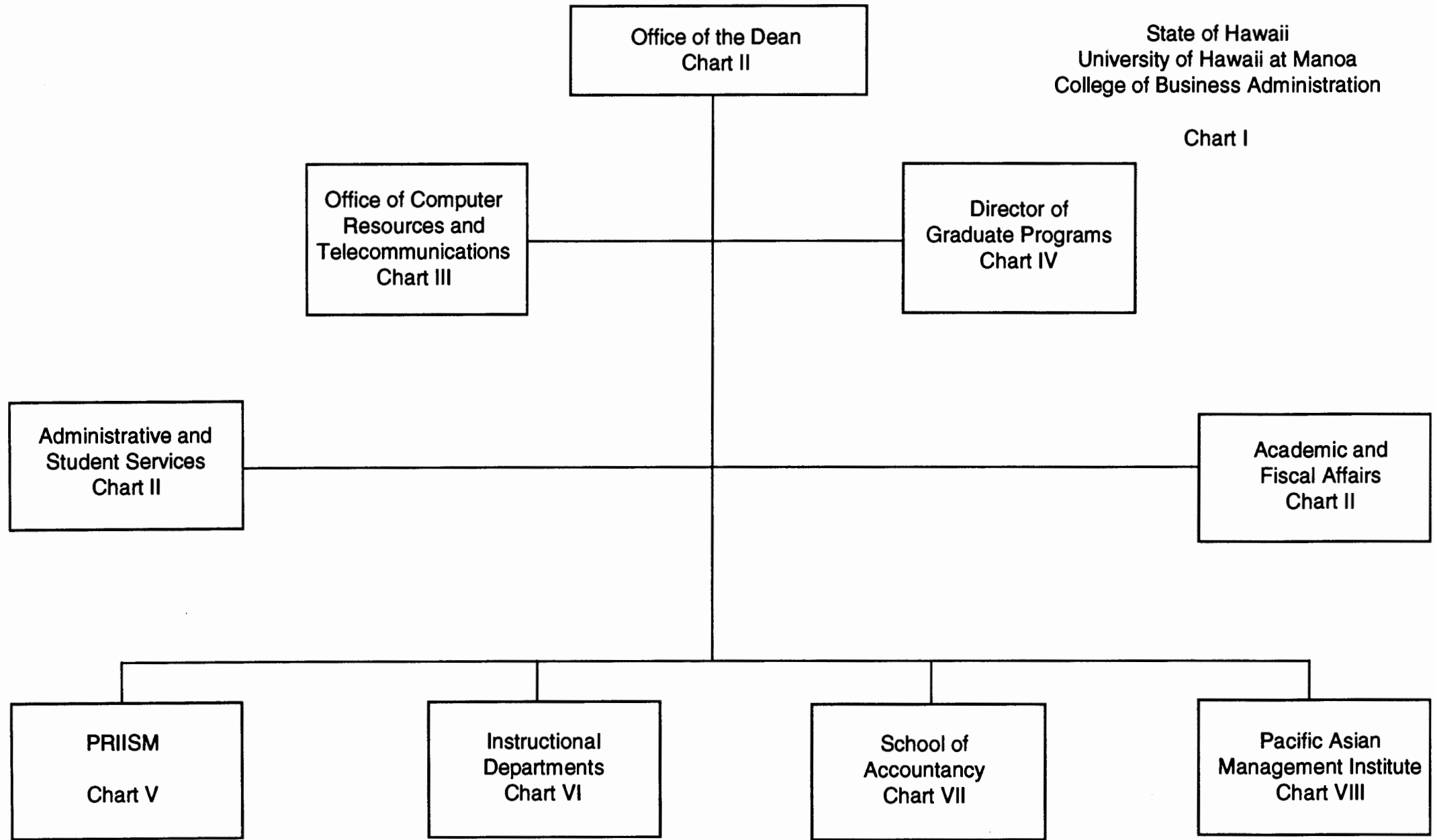


CHART UPDATED
DATE JUL 31 1997

State of Hawaii
University of Hawaii at Manoa
College of Business Administration

Office of the Dean
(9.0 General Fund Position Count)

Position Organization
Chart II

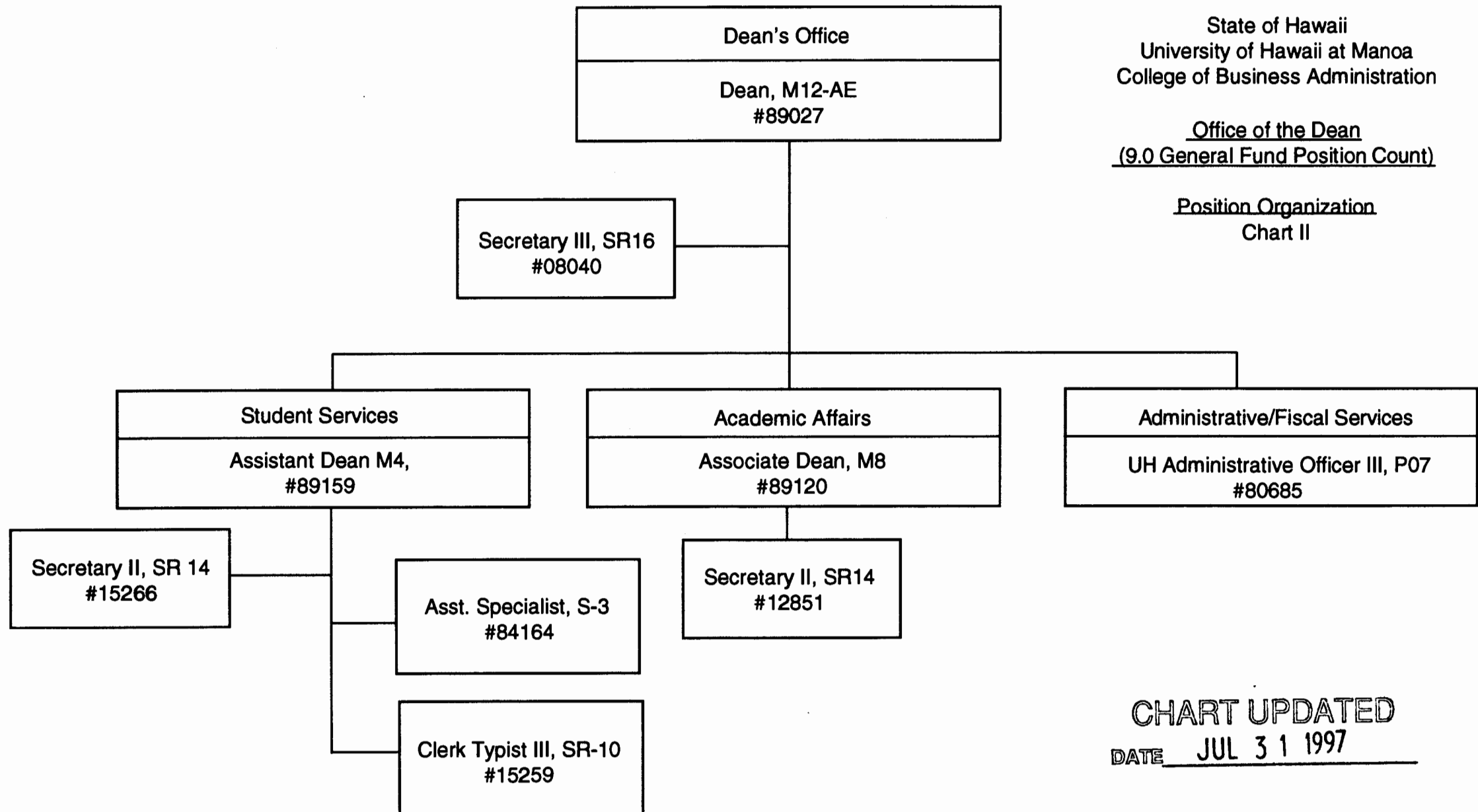
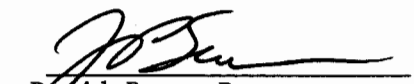


CHART UPDATED
DATE JUL 31 1997


David Bess, Dean
September 10, 1997

State of Hawaii
University of Hawaii at Manoa
College of Business Administration

Office of Computer Resources
and Telecommunications

Chart III

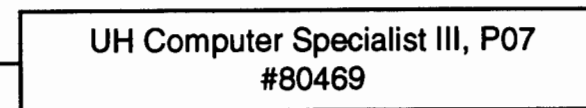
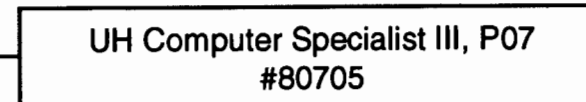
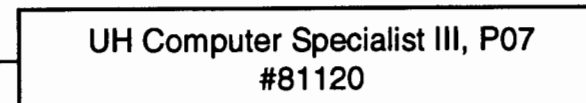
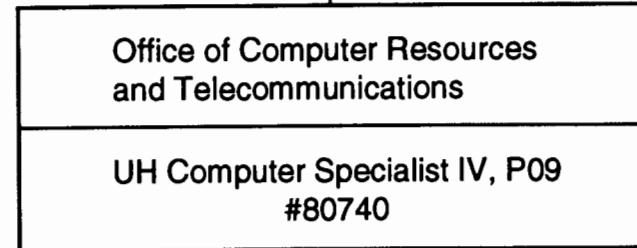
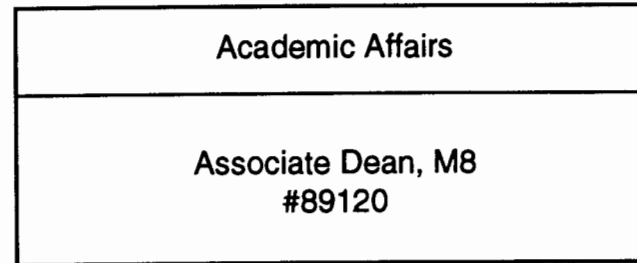
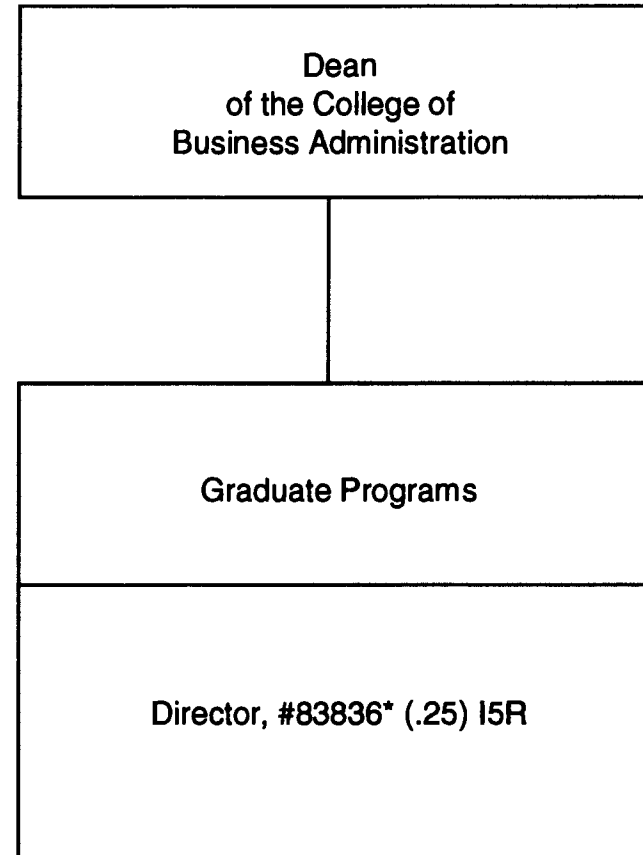


CHART UPDATED
DATE JUL 3 1 1997

State of Hawaii
University of Hawaii at Manoa
College of Business Administration


Graduate Programs

Chart IV



* Instructional position with
administrative duties

CHART UPDATED
DATE JUL 3 1 1997


David Bess, Dean
September 10, 1997

State of Hawaii
University of Hawaii at Manoa
College of Business Administration

Pacific Research Institute for
Information Systems and Management
(PRIISM)

Chart V

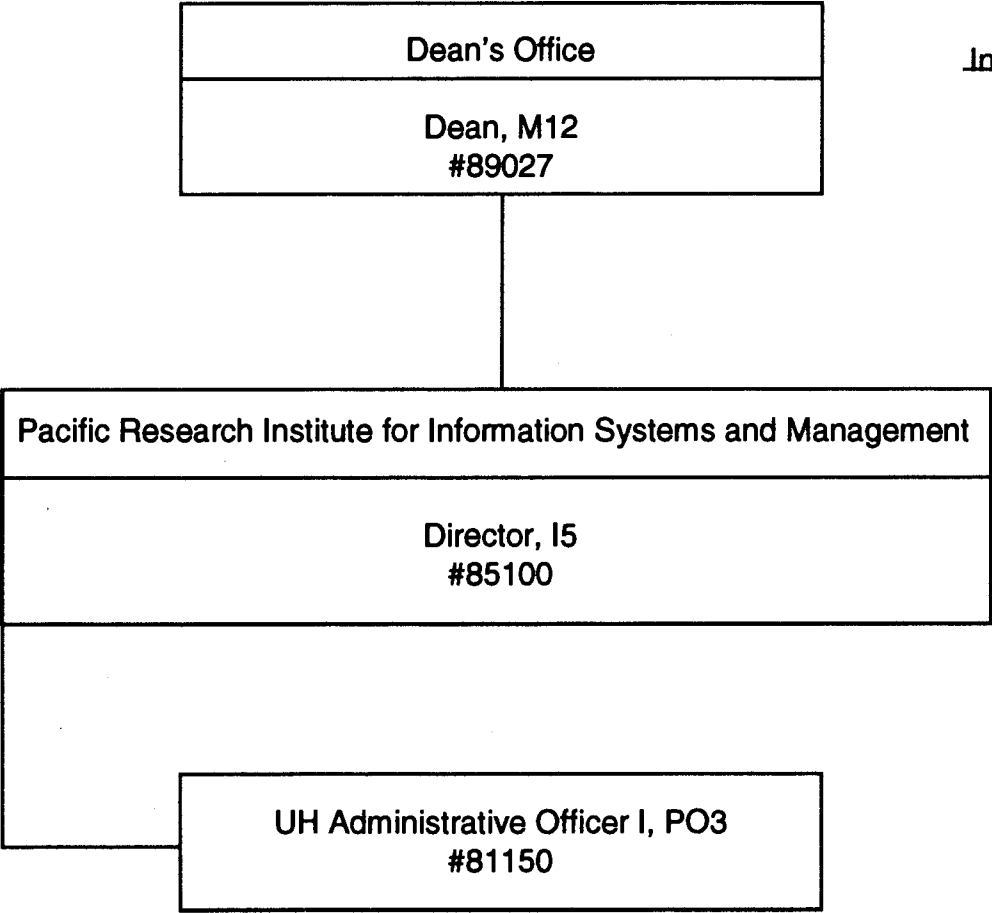
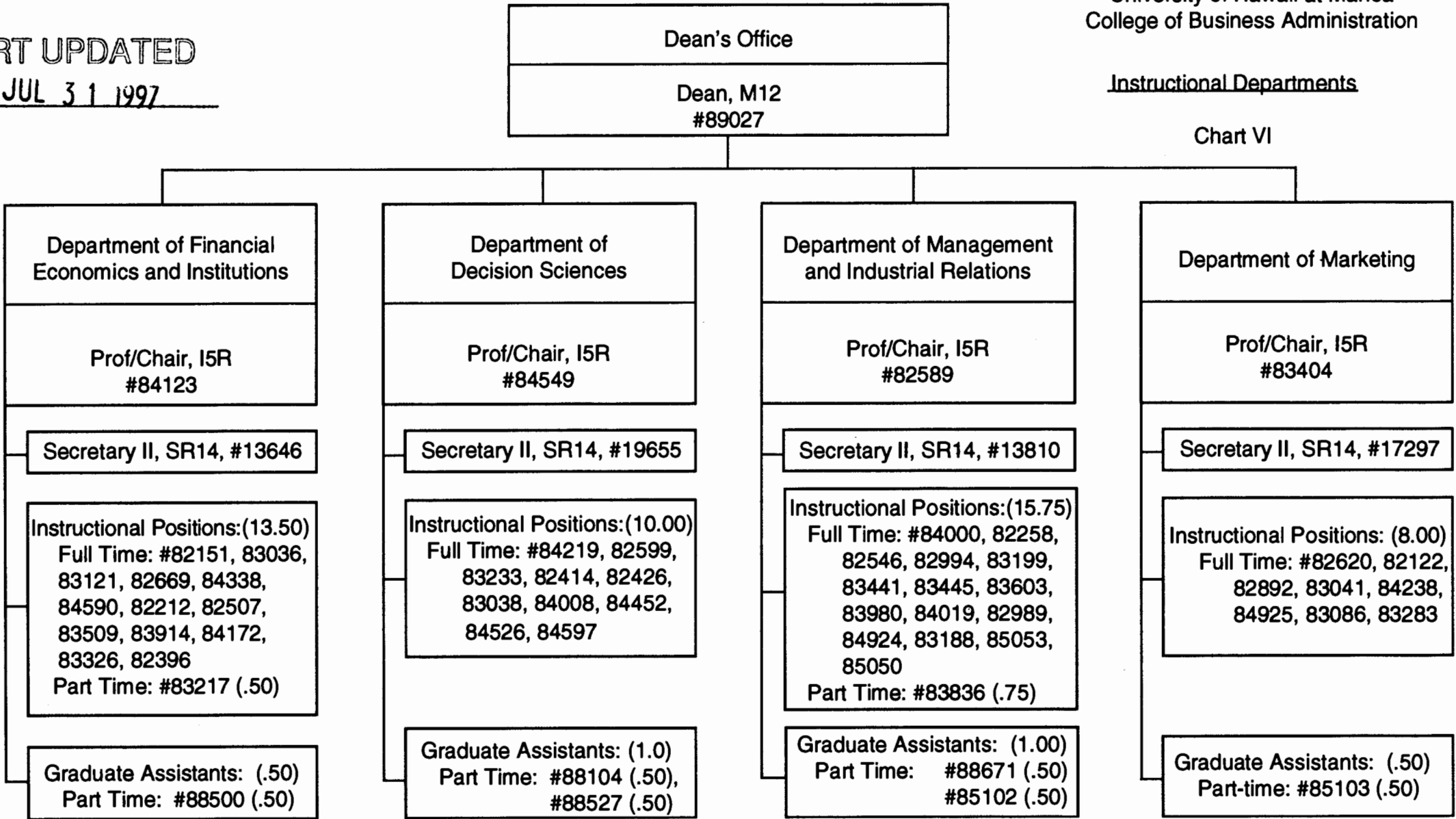


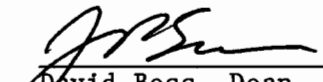
CHART UPDATED
DATE JUL 31 1997

Instructional Departments

Chart VI

CHART UPDATED
DATE JUL 31 1997




David Bess, Dean
September 10, 1997

State of Hawaii
University of Hawaii at Manoa
College of Business Administration

School of Accountancy

Chart VII

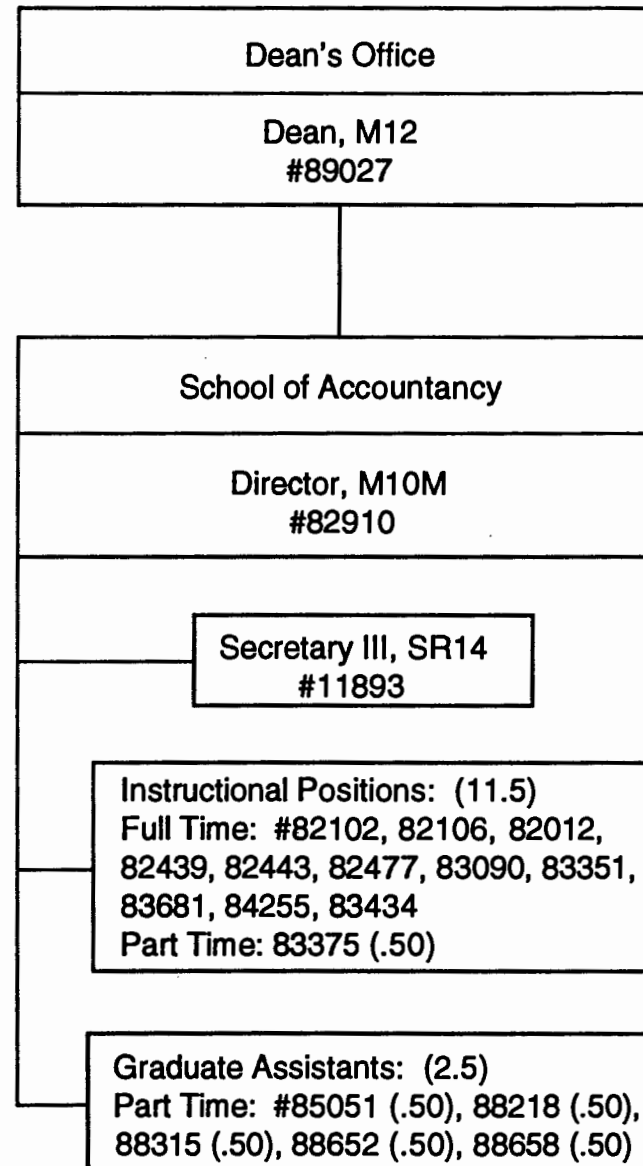
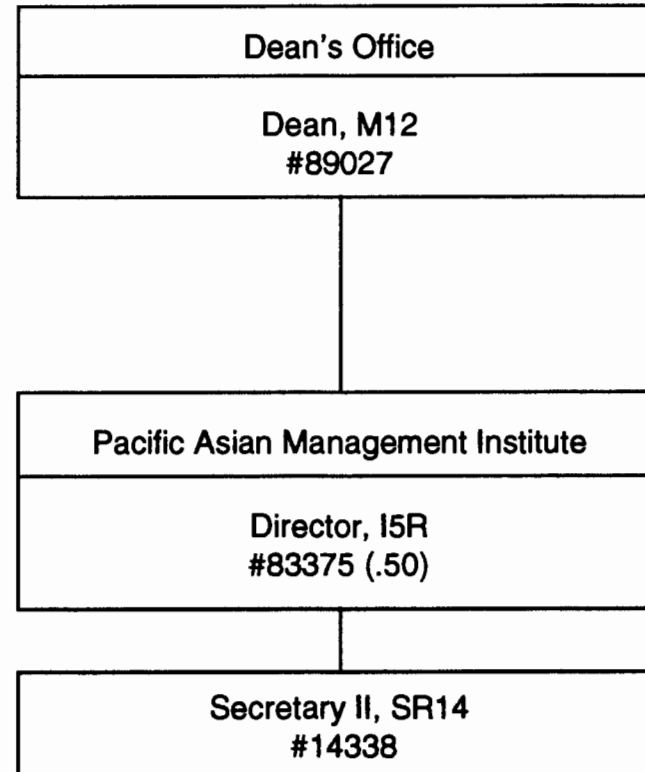


CHART UPDATED
JUL 31 1997
DATE _____

State of Hawaii
University of Hawaii at Manoa
College of Business Administration

Pacific Asian Management Institute
(PAMI)

Chart VIII



* Instructional position with
administrative duties

CHART UPDATED
DATE JUL 31 1997