

Organization Chart
Chart I

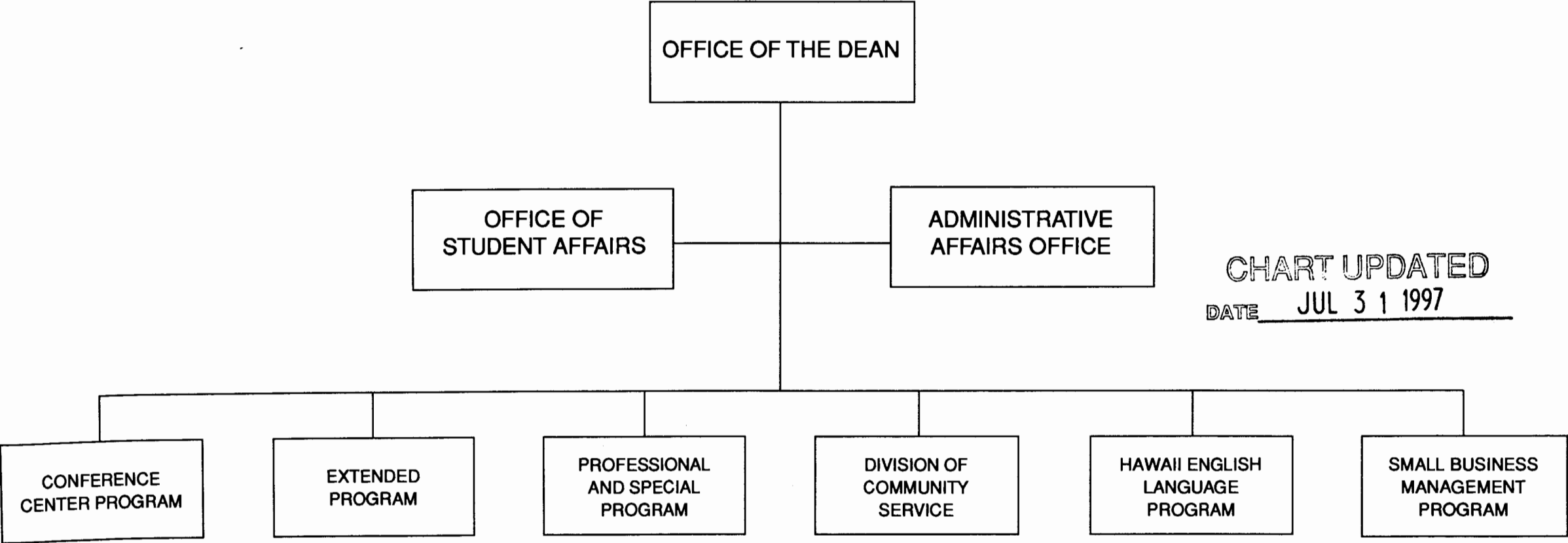


CHART UPDATED
DATE JUL 31 1997

CHART UPDATED
DATE JUL 31 1997

Office of the Dean

Dean
#89128

M-11
(B)

Secretary III
#10867

SR-16

Student Affairs Office

Assistant Dean
#89065

M-3

Counseling, Registration & Record Services

UH Educational Sp III
#80229

P-09
(B)

Clerk Typist III
#17425

SR-10
(B)

UH Educational Specialist II
#81837

P-06
(B)

UH Educational Specialist II
#80633

P-06
(B)

Secretary II
#00491

SR-14

**Specialist
#83721**

S-5

UH Educational Specialist II
#81968

P-06
(B)

Associate Dean
#89074

M-6

Secretary II
#24871

SR-14

UH Administrative Officer IV
#80142

P-09
(B)

Account Clerk IV
#11485

SR-13

Account Clerk IV
#14209

SR-13
(B)

Clerk IV
#21626

SR-10
(B)

UH Computer Specialist II
#80352

P-05
(B)

“Pending Establishment”

Pseudo No. 94025F Clerk Typist III (B)

Pseudo No. 94026F Cashier I (B)

General Fund: 7.00

Special Fund (B): 12.00

Position Organization Chart
Chart III

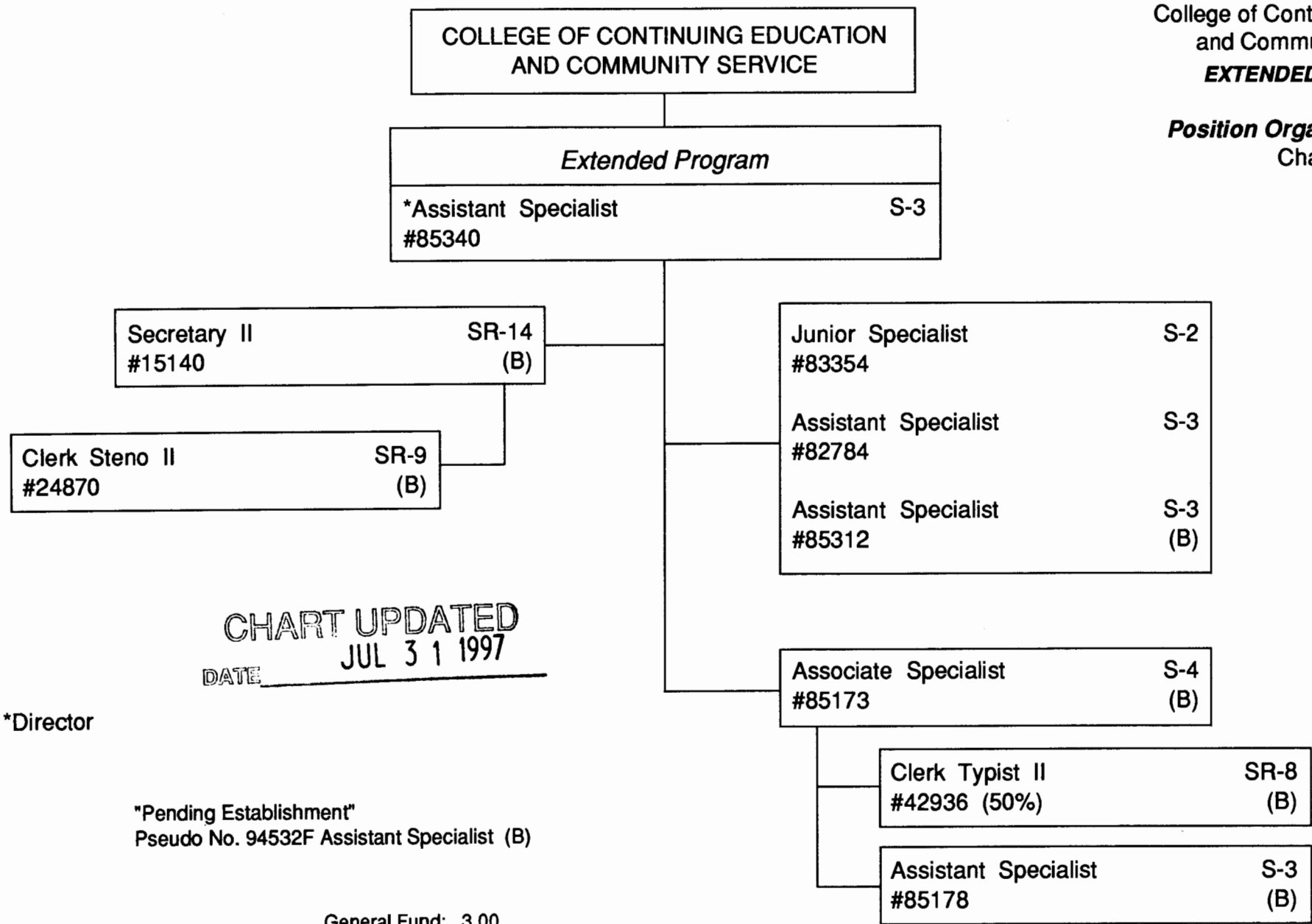


CHART UPDATED
JUL 31 1997
DATE _____

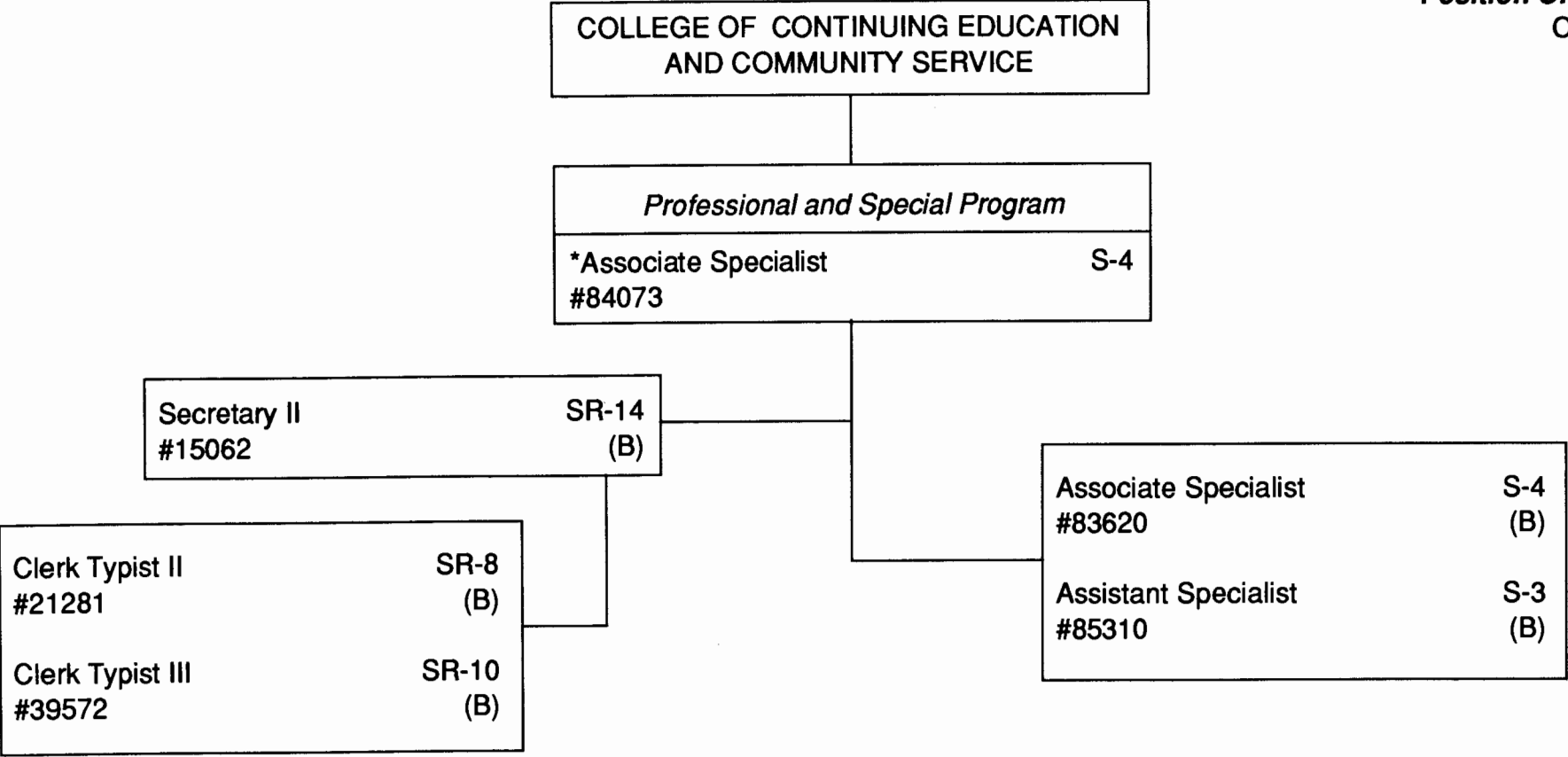
*Director

"Pending Establishment"
Pseudo No. 94532F Assistant Specialist (B)

General Fund: 3.00
Special Fund (B): 6.50

University of Hawaii at Manoa
College of Continuing Education
and Community Service
PROFESSIONAL AND SPECIAL PROGRAM

Position Organization Chart
Chart IV



"Pending Establishment"
Pseudo No. 94527F Assistant Specialist (B)

*Director

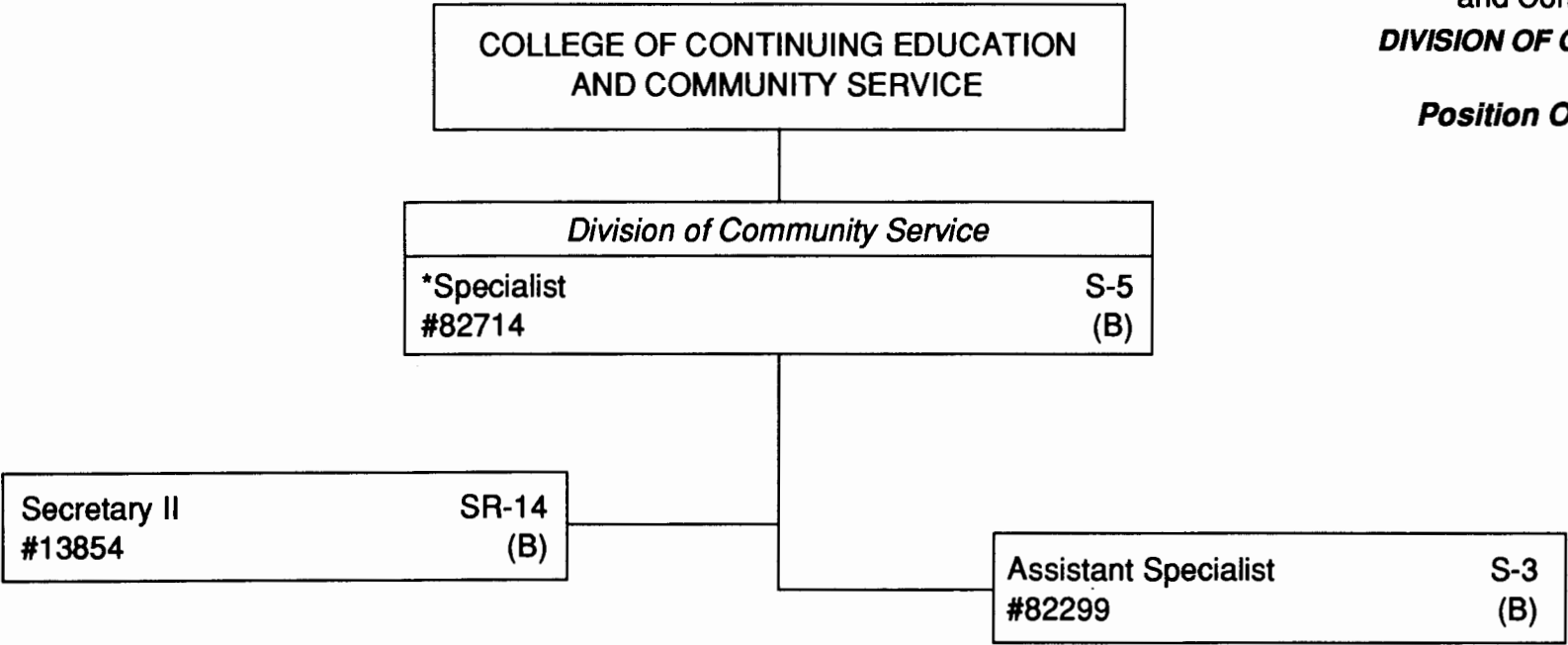
General Fund: 1.00
Special Fund (B): 6.00

CHART UPDATED
DATE JUL 31 1997

University of Hawaii at Manoa
College of Continuing Education
and Community Service

DIVISION OF COMMUNITY SERVICE

Position Organization Chart
Chart V



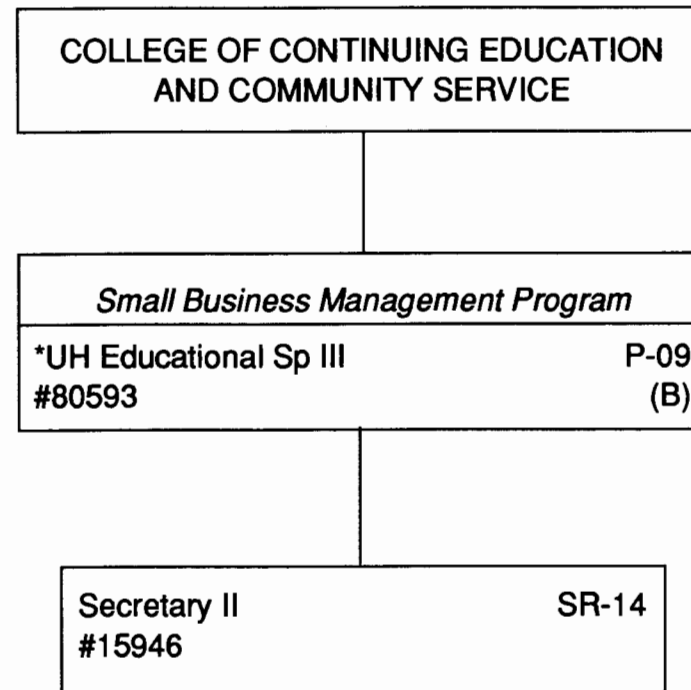
*Director

Special Fund (B): 3.00

CHART UPDATED
DATE JUL 3 1 1997

University of Hawai'i at Mānoa
College of Continuing Education
and Community Service
SMALL BUSINESS MANAGEMENT PROGRAM

Position Organization Chart
Chart VI



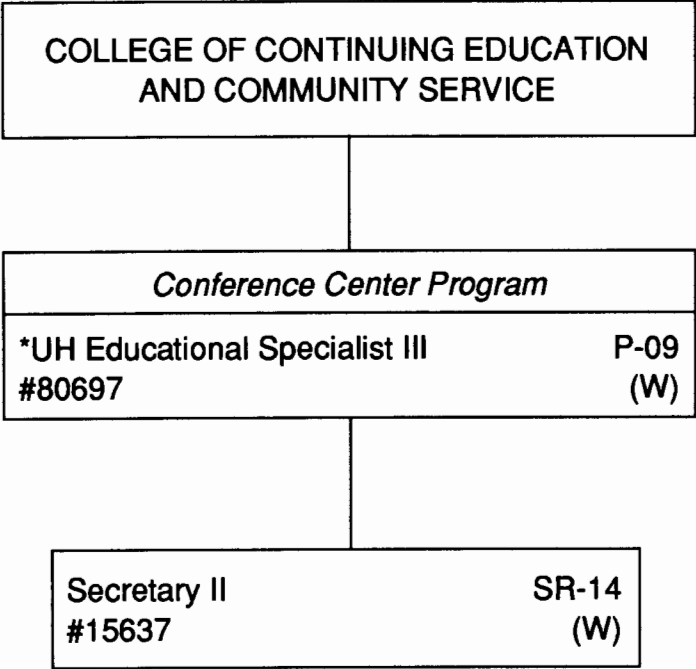
*Director

General Fund: 1.00
Special Fund (B): 1.00

CHART UPDATED
DATE JUL 3 1 1997

University of Hawai'i at Manoa
College of Continuing Education
and Community Service
THE CONFERENCE CENTER

Position Organization Chart
Chart VII



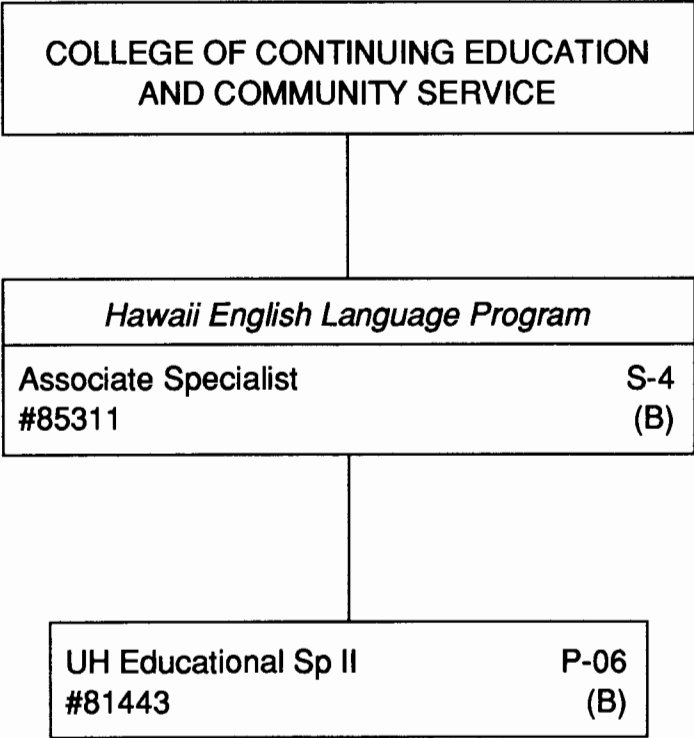
*Director

Revolving Fund: 2.00

CHART UPDATED
DATE JUL 31 1997

University of Hawai'i at Mānoa
College of Continuing Education
and Community Service
HAWAII ENGLISH LANGUAGE PROGRAM

Position Organization Chart
Chart VIII



Special Fund (B): 2.00

CHART UPDATED
DATE JUL 3 1 1997