

STATE OF HAWAII  
 UNIVERSITY OF HAWAII  
 UNIVERSITY OF HAWAII AT MANOA  
 COLLEGE OF ENGINEERING (100.00)\*

Organization Chart  
Chart I

CHART UPDATED  
 JUL 31 1997  
 DATE

*Paul C. Yuen*  
 Paul C. Yuen  
 Dean of Engineering  
 Sept. 9, 1997

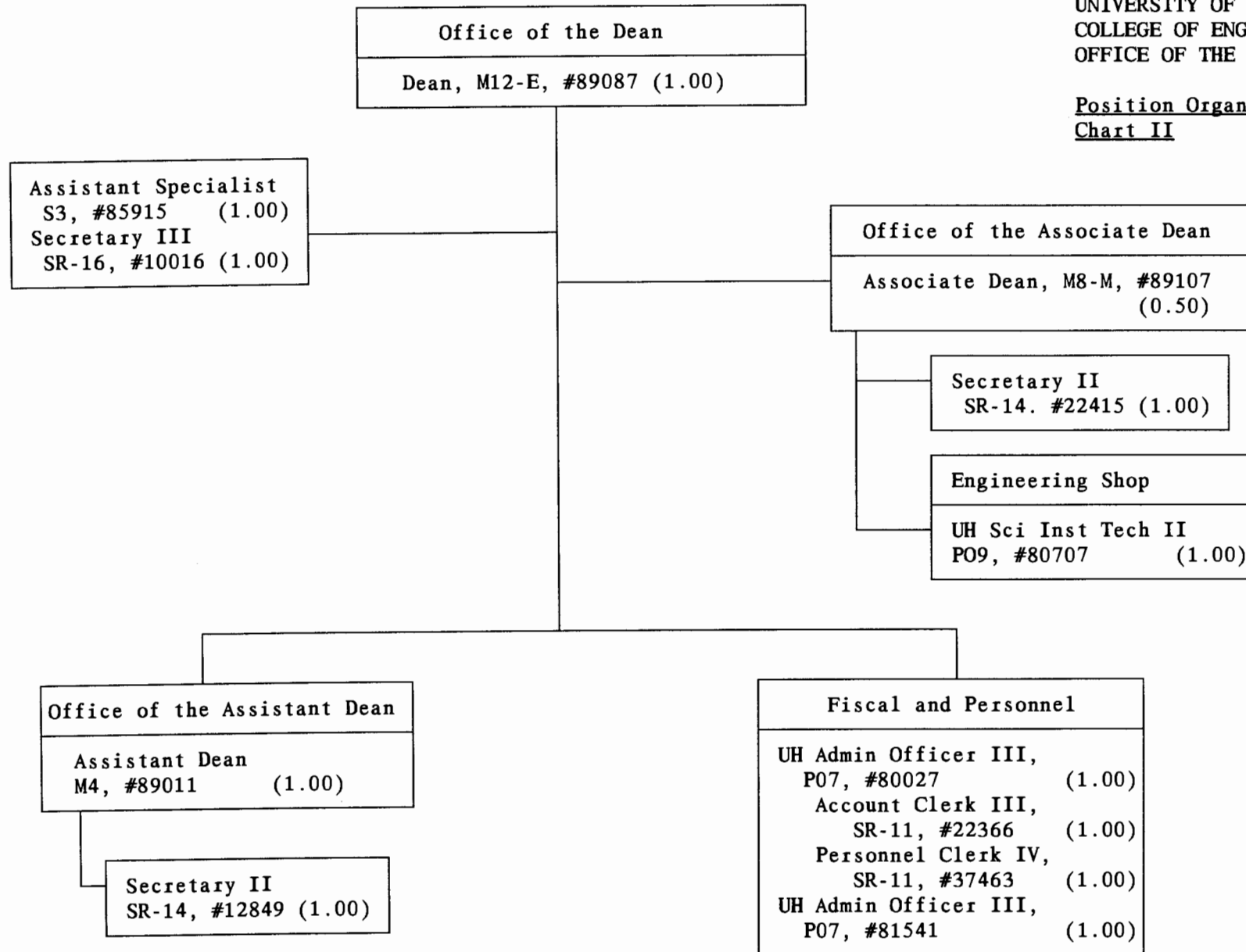
Revised August 12, 1996

\*Total General Fund Position Count  
 \*\*Advisory Committees

Approved:  
 Title:  
 Date:

STATE OF HAWAII  
UNIVERSITY OF HAWAII  
UNIVERSITY OF HAWAII AT MANOA  
COLLEGE OF ENGINEERING  
OFFICE OF THE DEAN (11.50)\*

Position Organization Chart  
Chart II



Revised August 12, 1996

CHART UPDATED  
DATE JUL 31 1997

\*General Fund Position Count

Approved: *Paul G. Yuen*  
Title: Dean of Engineering  
Date: Sept. 9, 1997

## Office of the Dean

STATE OF HAWAII  
 UNIVERSITY OF HAWAII AT MANOA  
 COLLEGE OF ENGINEERING  
 INSTRUCTIONAL DEPARTMENTS (88.50)\*  
Position Organization Chart  
Chart III

Department of Civil Engineering	Department of Electrical Engineering	Department of Mechanical Engineering	Computer Facility
Chairman (Appointed from Instructional Positions) Secretary II, SR-14, #15409 (1.00) Clk-Steno II, SR-09, #18019 (1.00) UH Sci Instrument Tech II, P09, #81111 (1.00) UH Research Associate IV, P07, #81197 (1.00) Instructional Positions (22.00) <u>Full Time:</u> #82351, 82367, 82566, 82614, 82647, 82760, 82783, 82844, 82966, 83019, 83352, 83630, 83762, 83876, 84290, 84299, 84334, 84363, 84548, 84902, 85355 <u>Part Time:</u> #84672 (0.50), 85367 (0.50) Researcher Position (1.00) <u>Full Time:</u> #85359 Graduate Assistants (2.00) #85777 (0.50) 88347 (0.50) 88537 (0.50) 88664 (0.50) (29.00)	Chairman (Appointed from Instructional Positions) Secretary II, SR-14, #12853 (1.00) Clk-Typist II, SR-08, #28692 (1.00) Clk-Typist II, SR-08, #46180 (1.00) UH Electronics Tech II, P09, (1.00) #81078 UH Electronics Tech II, P09, (1.00) #81876 UH Electronics Engineer I, (1.00) P12, #81893 UH Electronics Engineer (1.00) P__, #81223*** Instructional Positions (26.00) <u>Full Time:</u> #82346, 82724, 82787, 82978, 83014, 83032, 83226, 83264, 83268, 83401, 83412, 83723, 83895, 84033, 84113, 84252, 84389, 84436, 84498, 84506, 84677, 85351, 85352, 85353, 85354, 85361 Graduate Assistants (4.00) #85291 (0.50), 85605 (0.50), 88025 (0.50), 88069 (0.50), 88128 (0.50), 88195 (0.50), 88522 (0.50), 88551 (0.50) (37.00)	Chairman (Appointed from Instructional Positions) Secretary II, SR-14, #13511 (1.00) Clk-Steno II, SR-09, #22335 (1.00) Electro Mechanical Lab Tech, (1.00) WB-14, #09067 UH Sci Instrument Tech II, (1.00) P09, #81174 Instructional Positions (15.00) <u>Full-time:</u> #82267, 82320, 82353, 82374, 82623, 82658, 82957, 83009, 83205, 83251, 83340, 83696, 84262, 85356, 85357 Graduate Assistants (1.50) #88158 (0.50) 88528 (0.50) 88609 (0.50) (20.50)	UH Electronics Engineer I, (1.00) P12, #80003 UH Educational Specialist (1.00) III, P09, #81998 (2.00)

Revised August 12, 1996

CHART UPDATED  
 JUL 31 1997  
 DATE \_\_\_\_\_

\*General Fund Position Count  
 \*\*Replaces position no. 82004  
 \*\*\*Reallocated position (#81223) from President's  
 pool to be established and classified.

Approved:

Title:

Date:

Paul C. Yuen  
 Dean of Engineering

Sept. 9, 1997