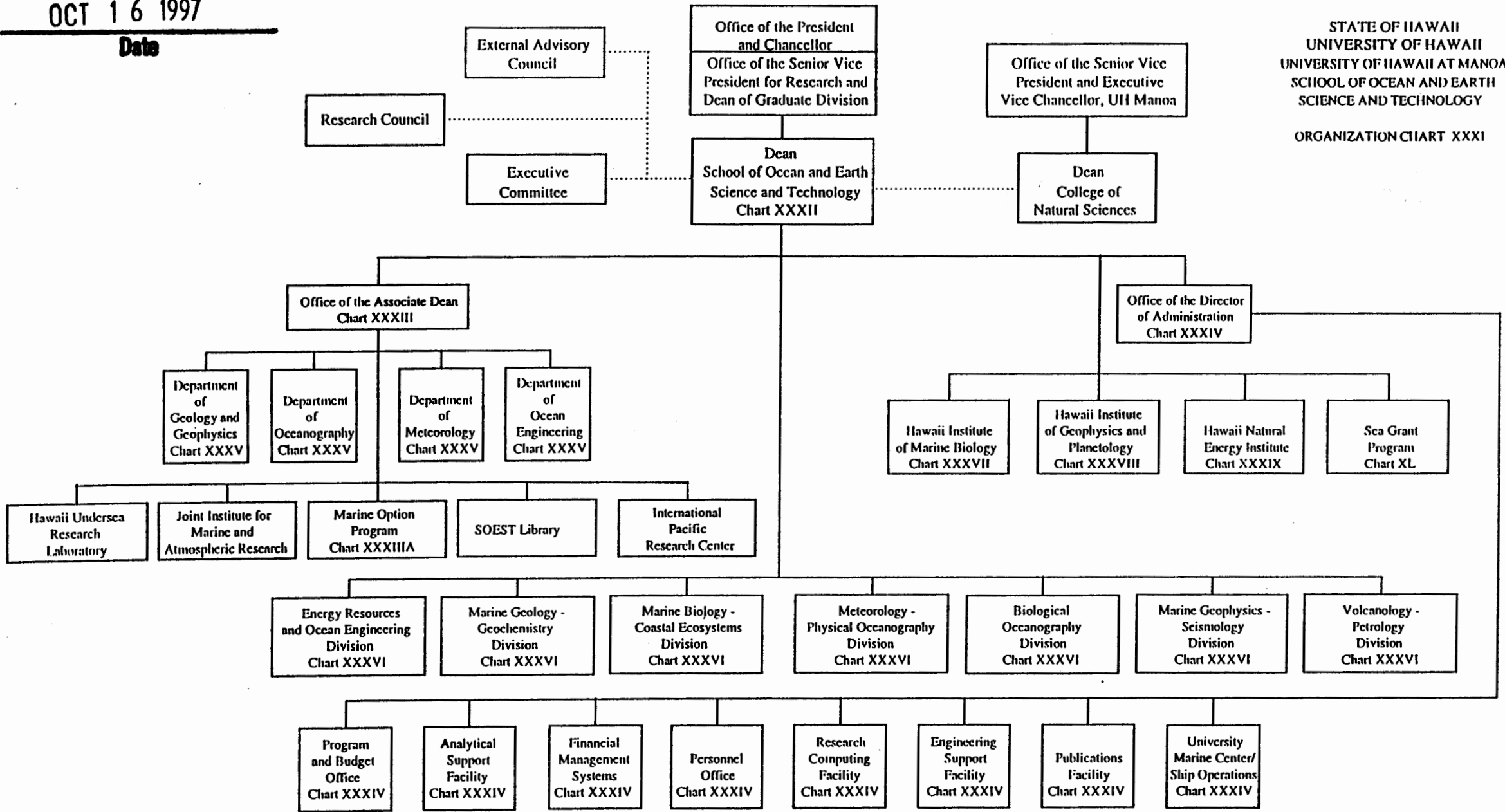


APPROVED BY THE UNIVERSITY
BOARD OF REGENTS
OCT 16 1997
Date

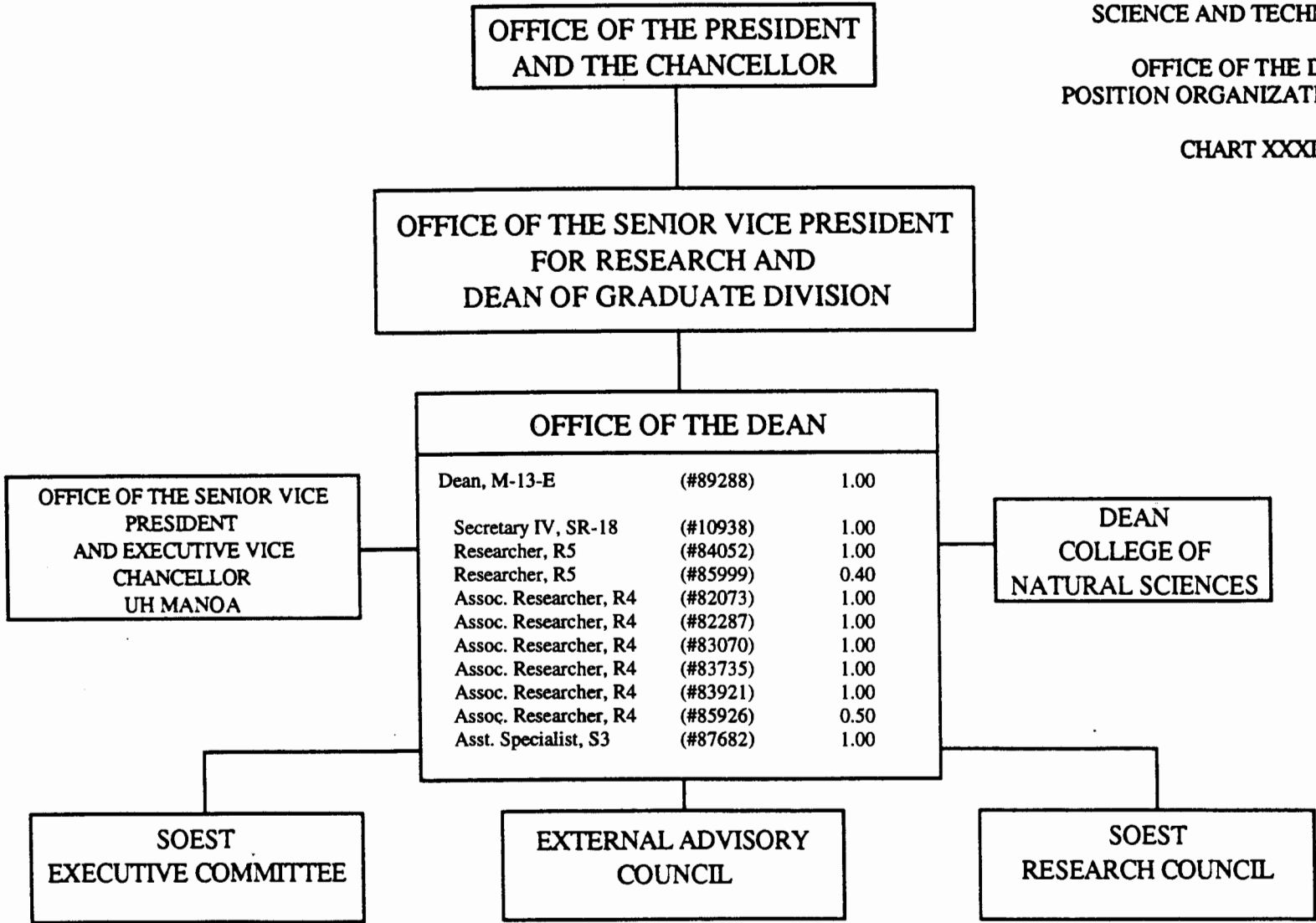
STATE OF HAWAII
UNIVERSITY OF HAWAII
UNIVERSITY OF HAWAII AT MANOA
SCHOOL OF OCEAN AND EARTH
SCIENCE AND TECHNOLOGY
ORGANIZATION CHART XXXI



STATE OF HAWAII
UNIVERSITY OF HAWAII
UNIVERSITY OF HAWAII AT MANOA
SCHOOL OF OCEAN AND EARTH
SCIENCE AND TECHNOLOGY

OFFICE OF THE DEAN
POSITION ORGANIZATION CHART

CHART XXXII



STATE OF HAWAII
UNIVERSITY OF HAWAII
UNIVERSITY OF HAWAII AT MANOA
SCHOOL OF OCEAN AND EARTH
SCIENCE AND TECHNOLOGY

OFFICE OF THE ASSOCIATE DEAN
FOR ACADEMIC AFFAIRS
POSITION ORGANIZATION CHART

CHART XXXIII

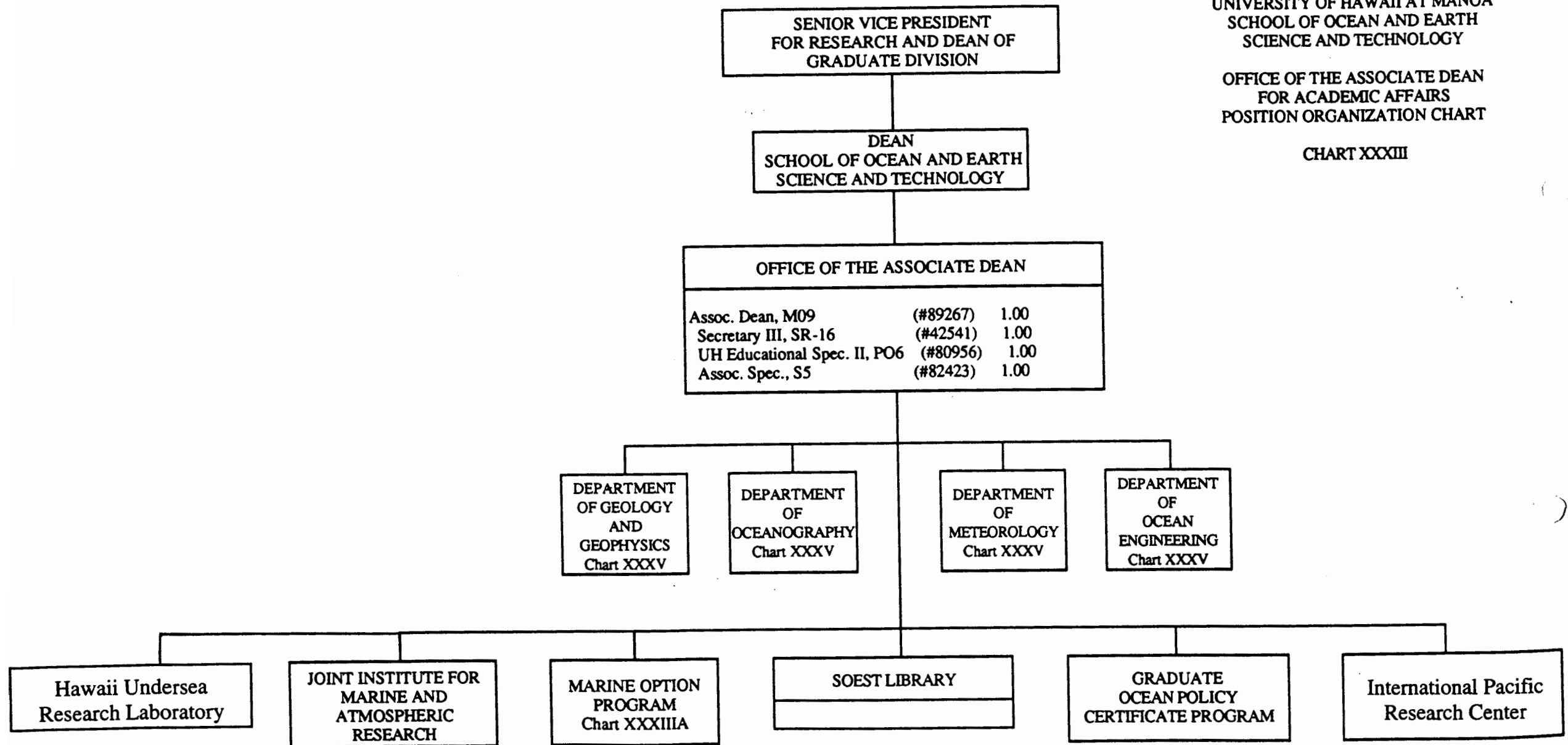
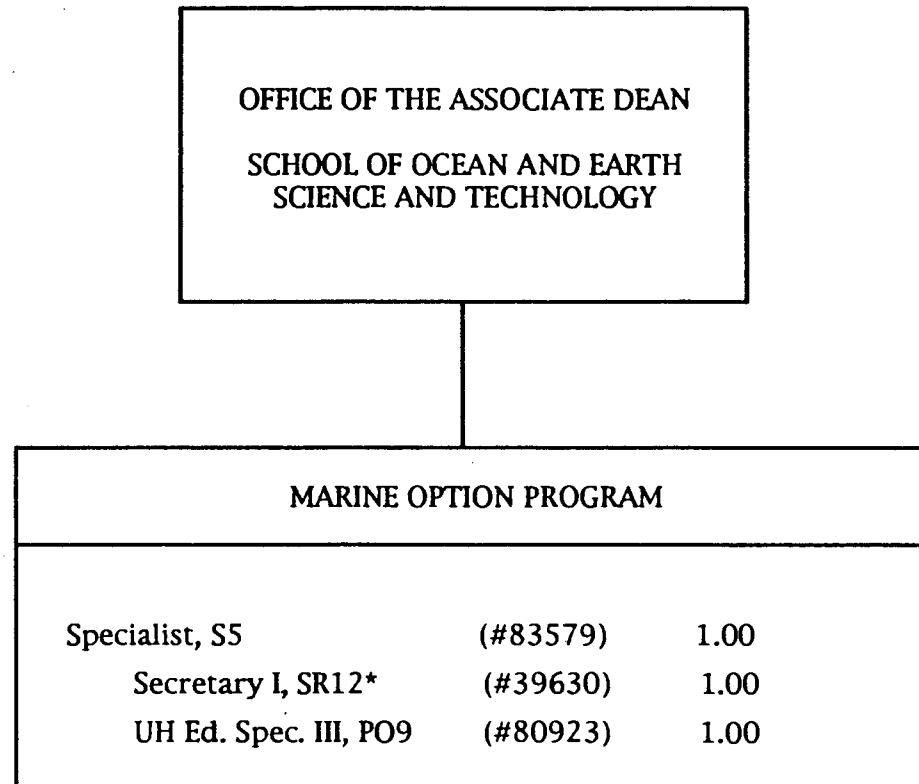


CHART UPDATED
DATE JUL 31 1997

STATE OF HAWAII
UNIVERSITY OF HAWAII
UNIVERSITY OF HAWAII AT MANOA
SCHOOL OF OCEAN AND EARTH
SCIENCE AND TECHNOLOGY

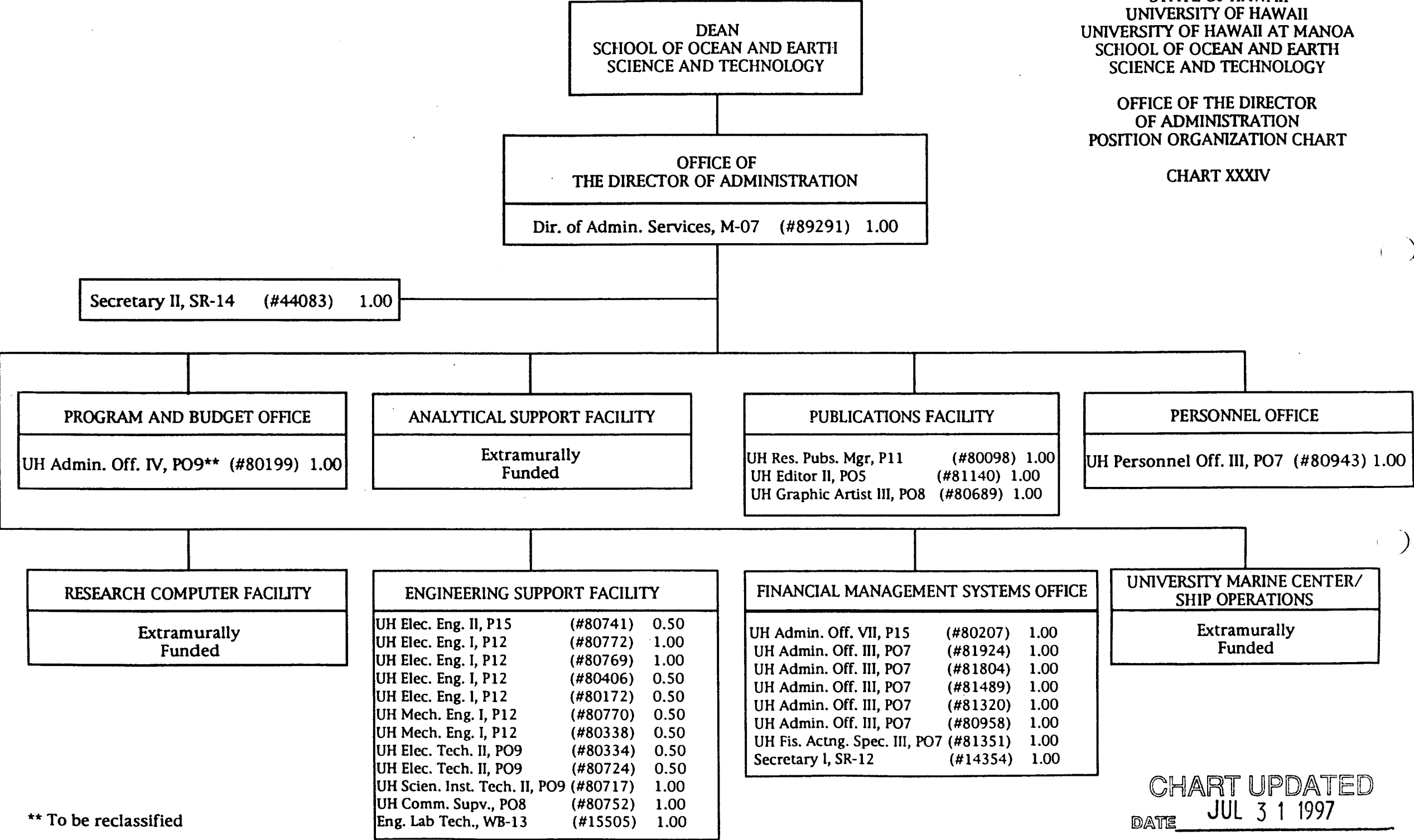
MARINE OPTION PROGRAM
POSITION ORGANIZATION CHART

CHART XXXIIIA



* To be reclassified

CHART UPDATED
DATE JUL 31 1997

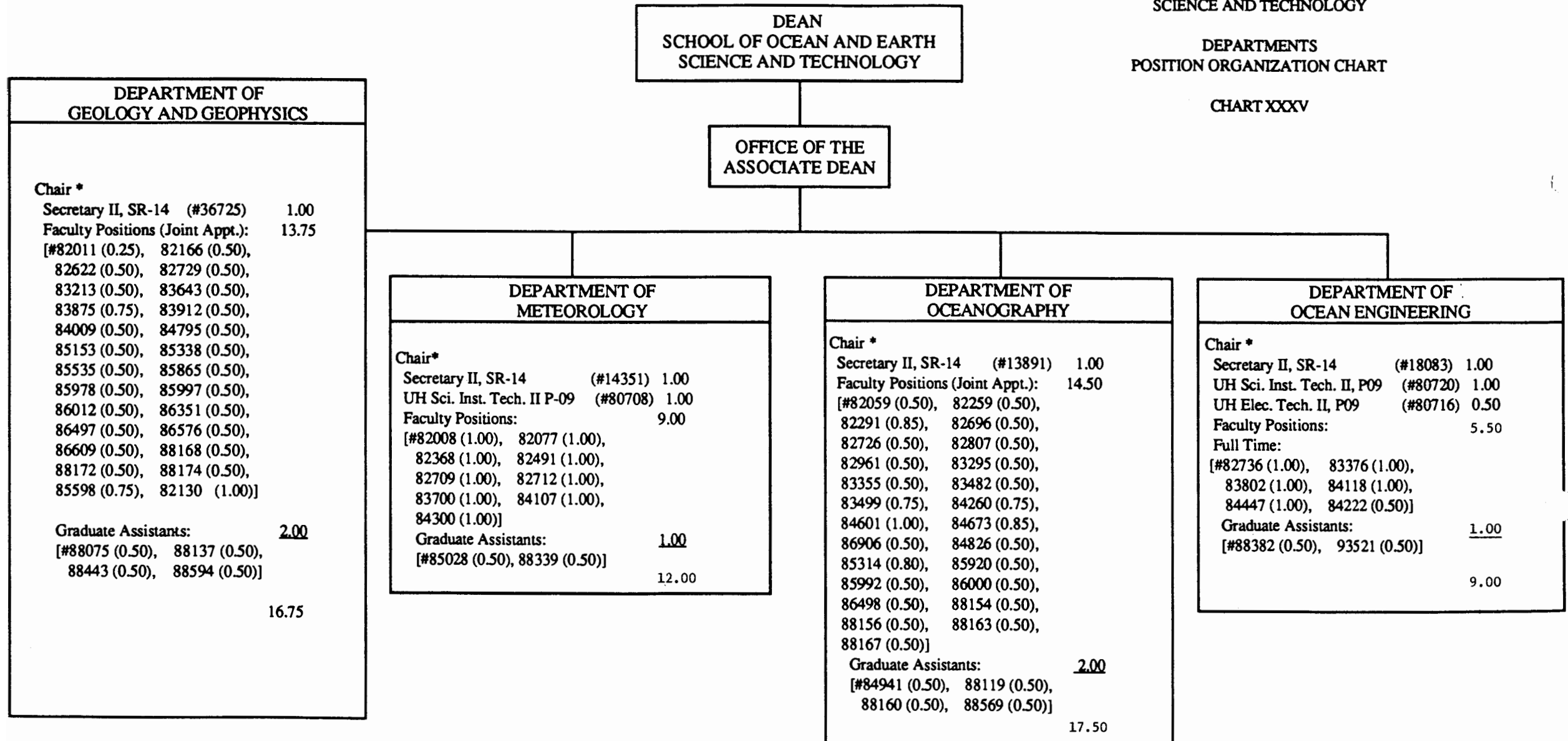


** To be reclassified

STATE OF HAWAII
UNIVERSITY OF HAWAII
UNIVERSITY OF HAWAII AT MANOA
SCHOOL OF OCEAN AND EARTH
SCIENCE AND TECHNOLOGY

DEPARTMENTS
POSITION ORGANIZATION CHART

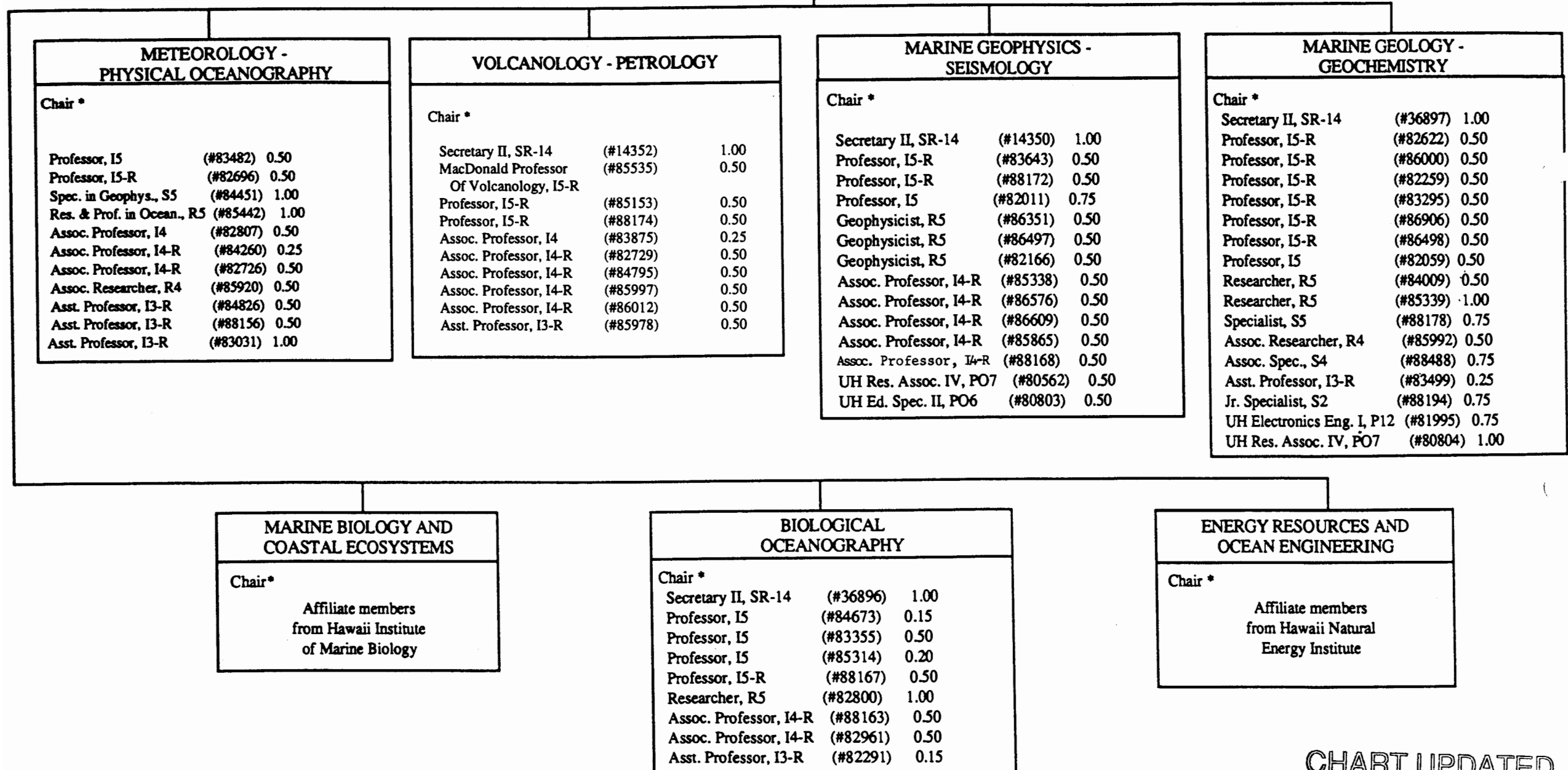
CHART XXXV



* Appointed from faculty positions

CHART UPDATED
DATE JUL 31 1997

DEAN
SCHOOL OF OCEAN AND EARTH
SCIENCE AND TECHNOLOGY



* Appointed from faculty positions

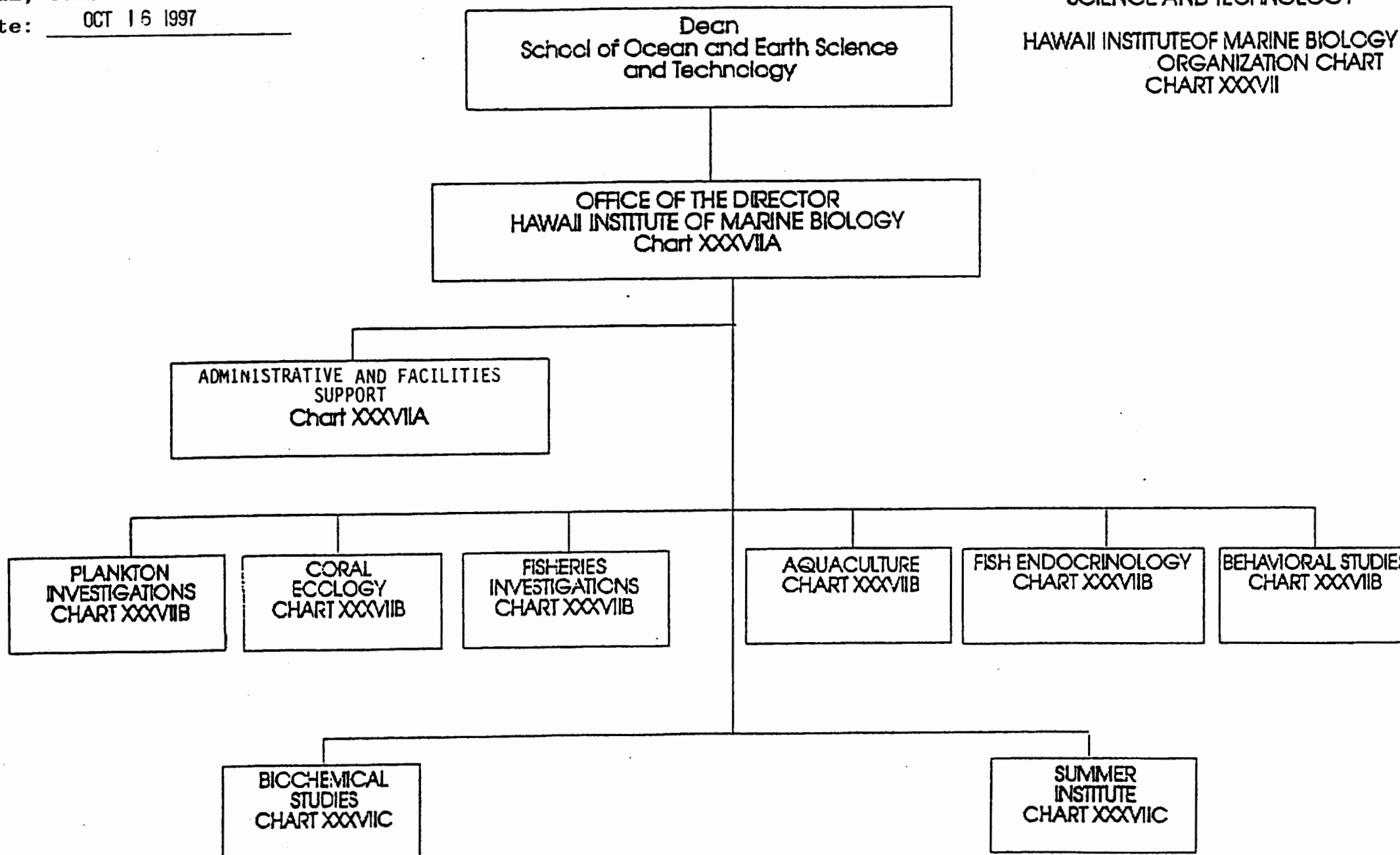
CHART UPDATED
DATE JUL 31 1997

APPROVED:


C. Barry Raleigh
Dean, SOEST

Date: OCT 16 1997

STATE OF HAWAII
UNIVERSITY OF HAWAII
UNIVERSITY OF HAWAII AT MANOA
SCHOOL OF OCEAN AND EARTH
SCIENCE AND TECHNOLOGY
HAWAII INSTITUTE OF MARINE BIOLOGY
ORGANIZATION CHART
CHART XXXVII



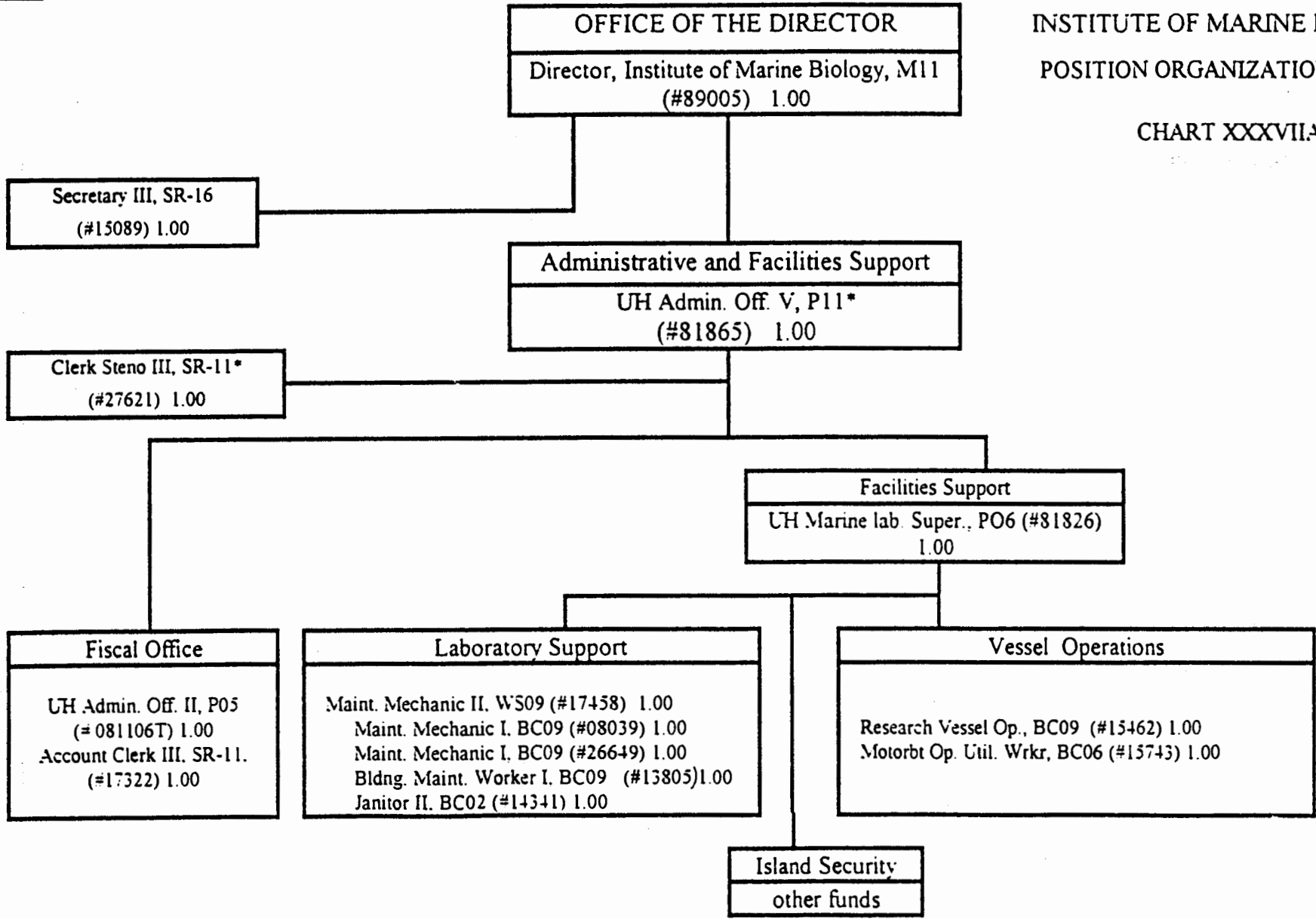
APPROVED:


C. Barry Raleigh
Dean, SOEST

Date: OCT 16 1997

STATE OF HAWAII
UNIVERSITY OF HAWAII
UNIVERSITY OF HAWAII AT MANOA
SCHOOL OF OCEAN AND EARTH
SCIENCE AND TECHNOLOGY
INSTITUTE OF MARINE BIOLOGY
POSITION ORGANIZATION CHART

CHART XXXVIIA



* To be reclassified

STATE OF HAWAII
UNIVERSITY OF HAWAII
UNIVERSITY OF HAWAII AT MANOA
SCHOOL OF OCEAN AND EARTH
SCIENCE AND TECHNOLOGY

HAWAII INSTITUTE OF MARINE BIOLOGY
POSITION ORGANIZATION CHART

CHART XXXVIII

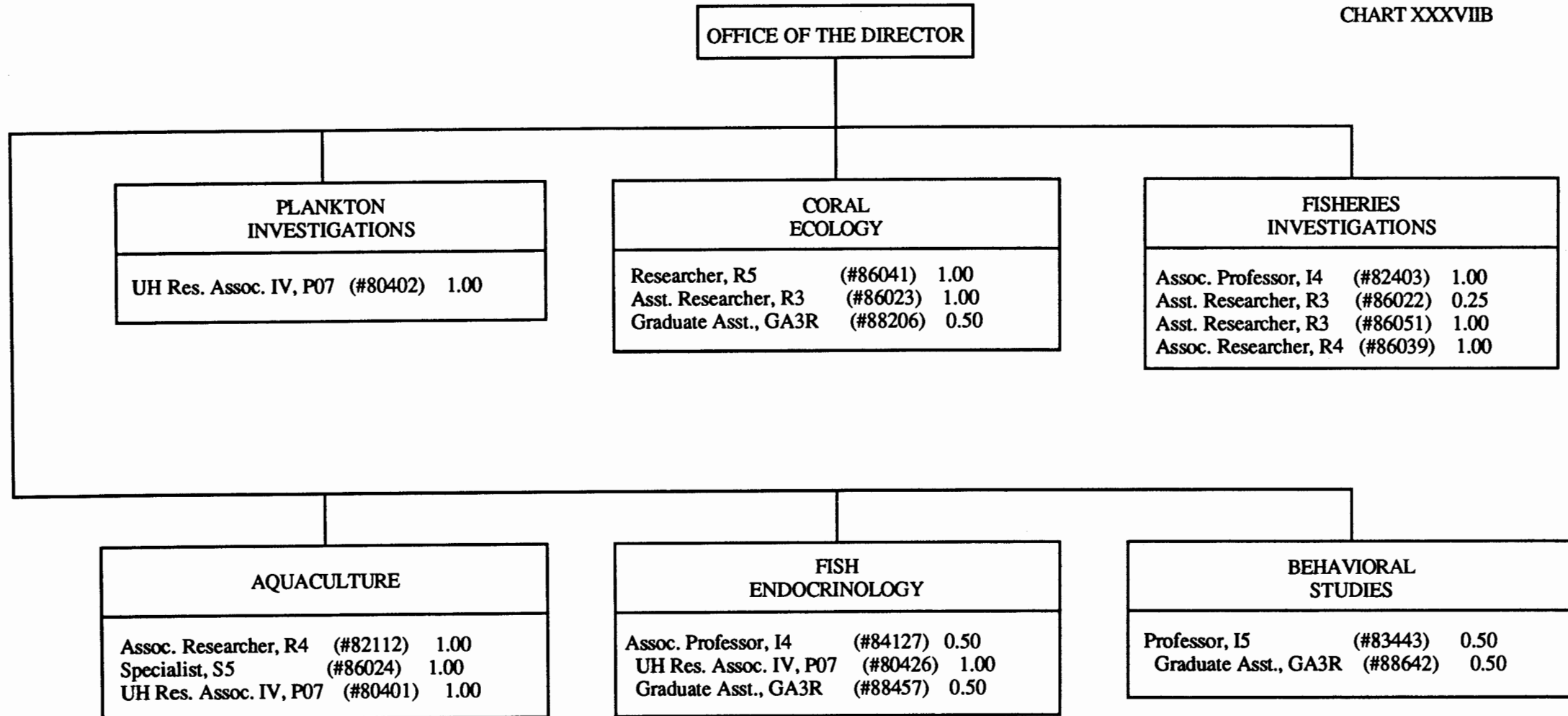


CHART UPDATED
DATE JUL 31 1997

STATE OF HAWAII
UNIVERSITY OF HAWAII
UNIVERSITY OF HAWAII AT MANOA
SCHOOL OF OCEAN AND EARTH
SCIENCE AND TECHNOLOGY

HAWAII INSTITUTE OF MARINE BIOLOGY
POSITION ORGANIZATION
CHART

CHART XXXVIIC

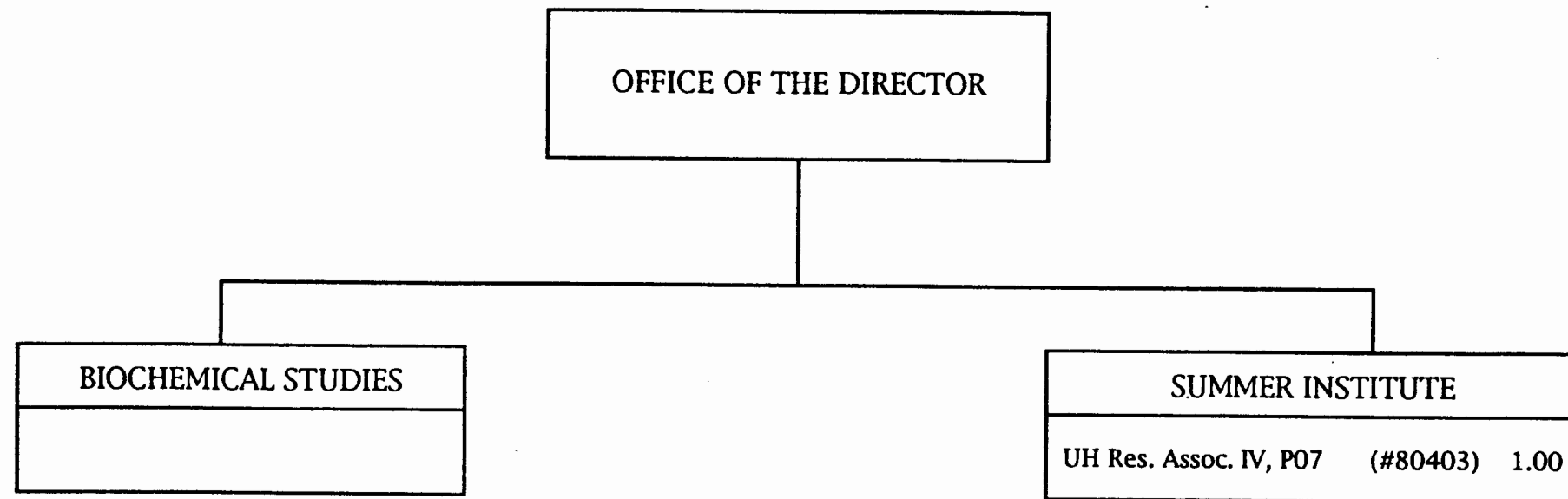
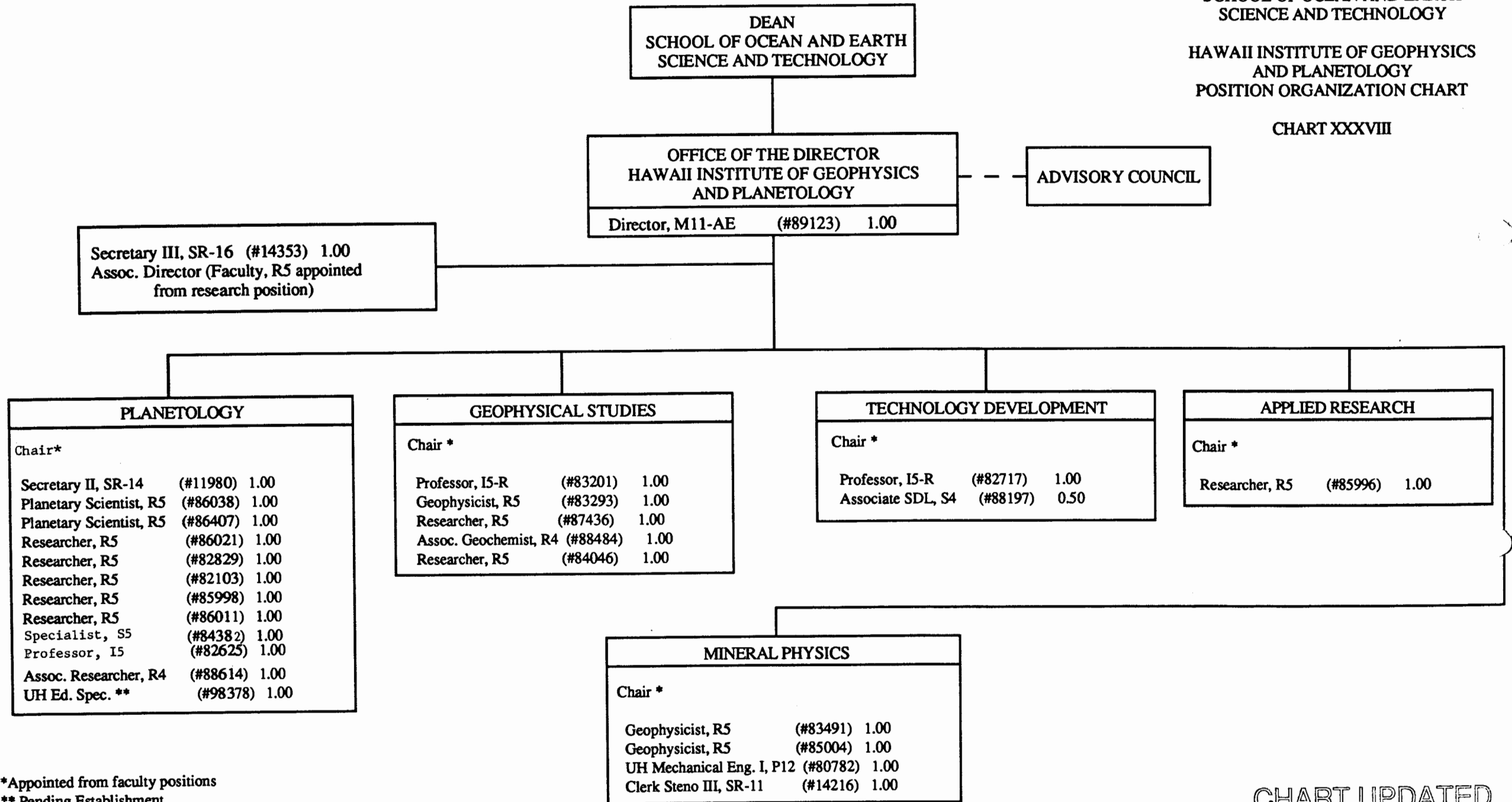


CHART UPDATED
DATE JUL 31 1997



*Appointed from faculty positions

** Pending Establishment

CHART UPDATED
JUL 31 1997
DATE _____

STATE OF HAWAII
UNIVERSITY OF HAWAII
UNIVERSITY OF HAWAII AT MANOA
SCHOOL OF OCEAN AND EARTH
SCIENCE AND TECHNOLOGY

HAWAII NATURAL ENERGY INSTITUTE
POSITION ORGANIZATION CHART

CHART XXXIX

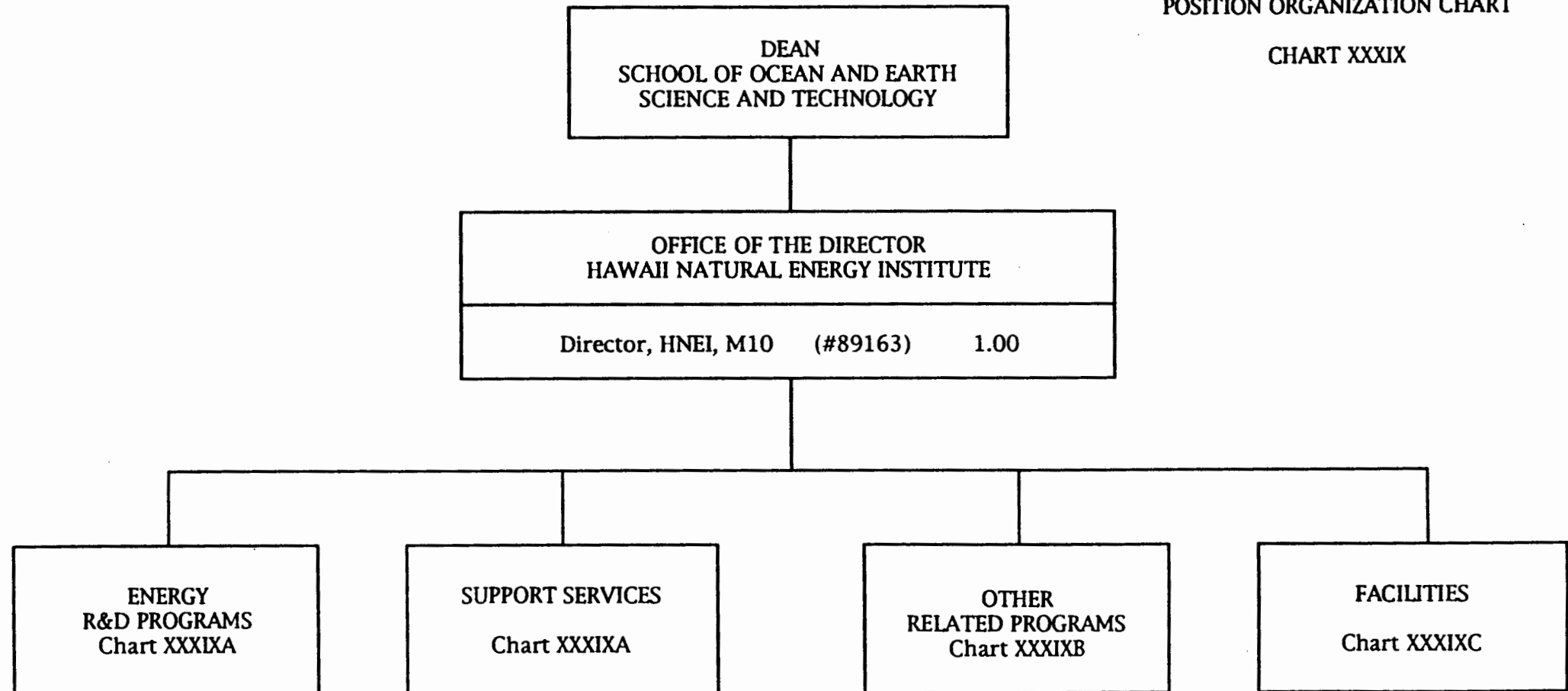


CHART UPDATED
JUL 31 1997
DATE _____

STATE OF HAWAII
UNIVERSITY OF HAWAII
UNIVERSITY OF HAWAII AT MANOA
SCHOOL OF OCEAN AND EARTH
SCIENCE AND TECHNOLOGY

HAWAII NATURAL ENERGY INSTITUTE
POSITION ORGANIZATION CHART

CHART XXXIXA

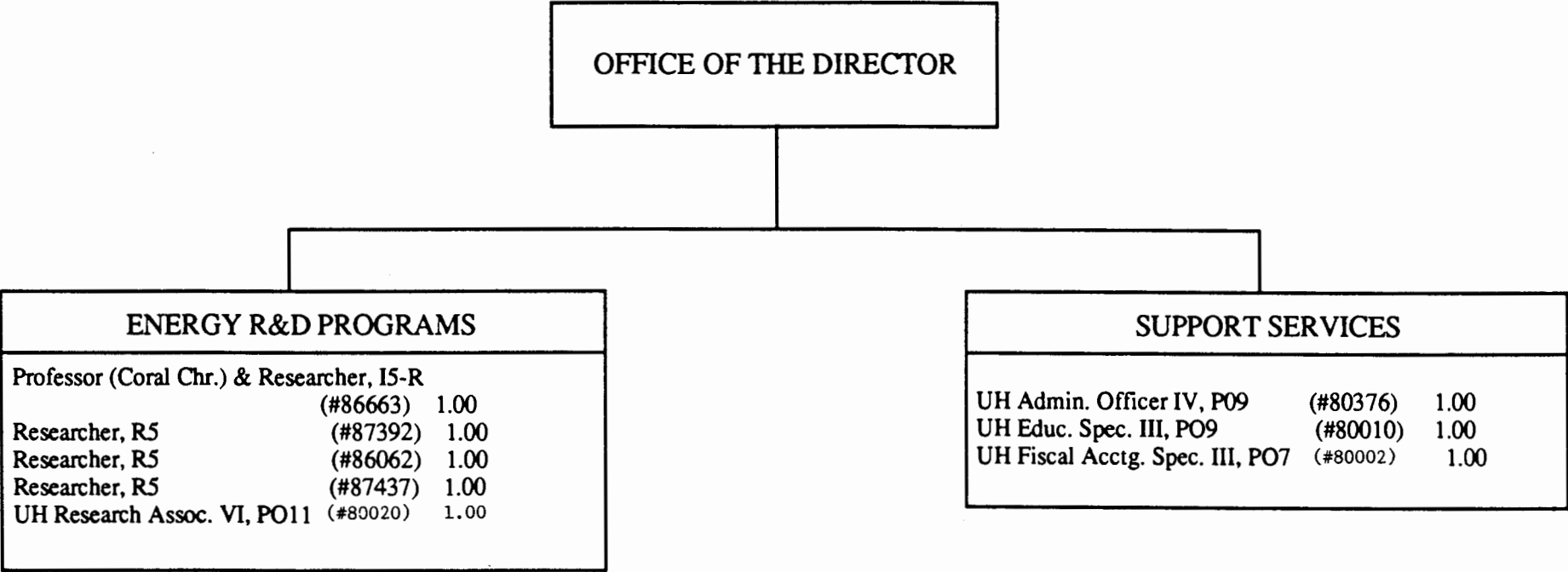


CHART UPDATED
JUL 3 1 1997
DATE _____

STATE OF HAWAII
UNIVERSITY OF HAWAII
UNIVERSITY OF HAWAII AT MANOA
SCHOOL OF OCEAN AND EARTH
SCIENCE AND TECHNOLOGY

HAWAII NATURAL ENERGY INSTITUTE
POSITION ORGANIZATION CHART

CHART XXXIXB

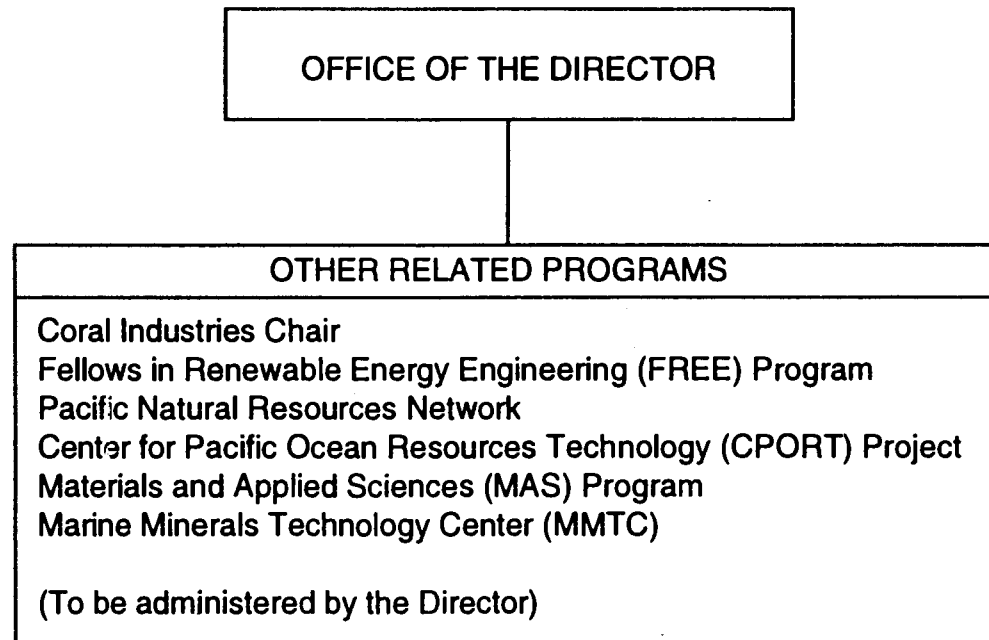
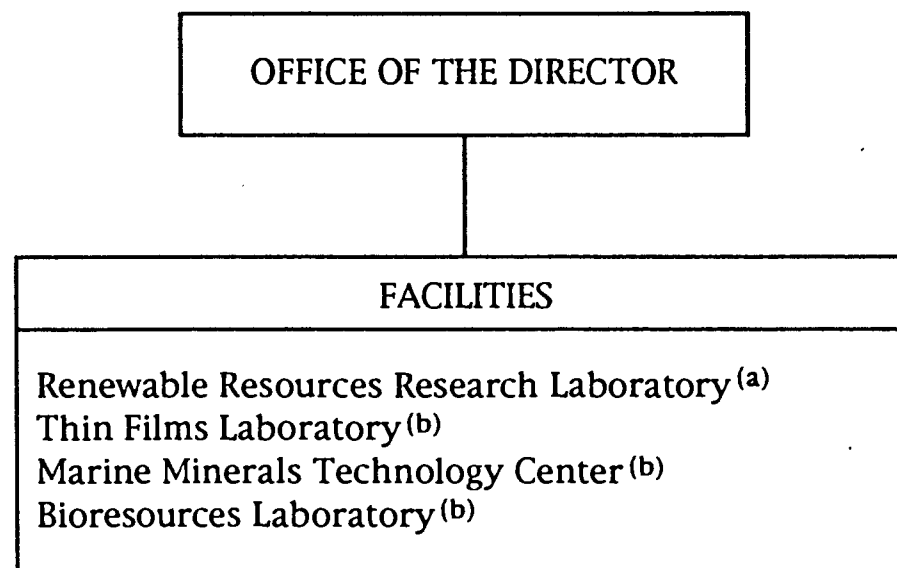


CHART UPDATED
JUL 31 1997
DATE _____

STATE OF HAWAII
UNIVERSITY OF HAWAII
UNIVERSITY OF HAWAII AT MANOA
SCHOOL OF OCEAN AND EARTH
SCIENCE AND TECHNOLOGY

HAWAII NATURAL ENERGY INSTITUTE
POSITION ORGANIZATION CHART

CHART XXXIXC



(a) administered by Coral Chair

(b) administration and research supervisory role

CHART UPDATED
JUL 31 1997
DATE _____

STATE OF HAWAII
UNIVERSITY OF HAWAII
UNIVERSITY OF HAWAII AT MANOA
SCHOOL OF OCEAN AND EARTH
SCIENCE AND TECHNOLOGY

SEA GRANT COLLEGE PROGRAM
ORGANIZATION CHART

CHART XL

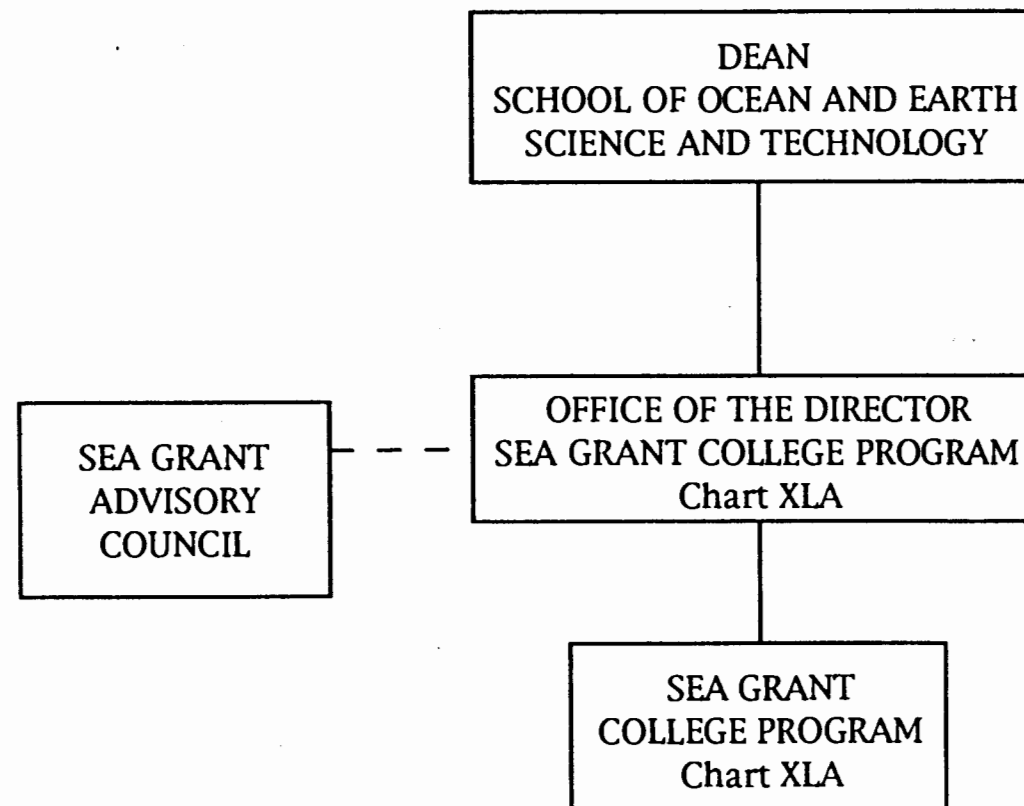


CHART UPDATED
JUL 31 1997
DATE _____

STATE OF HAWAII
UNIVERSITY OF HAWAII
UNIVERSITY OF HAWAII AT MANOA
SCHOOL OF OCEAN AND EARTH
SCIENCE AND TECHNOLOGY

SEA GRANT COLLEGE PROGRAM
POSITION ORGANIZATION CHART

CHART XLA

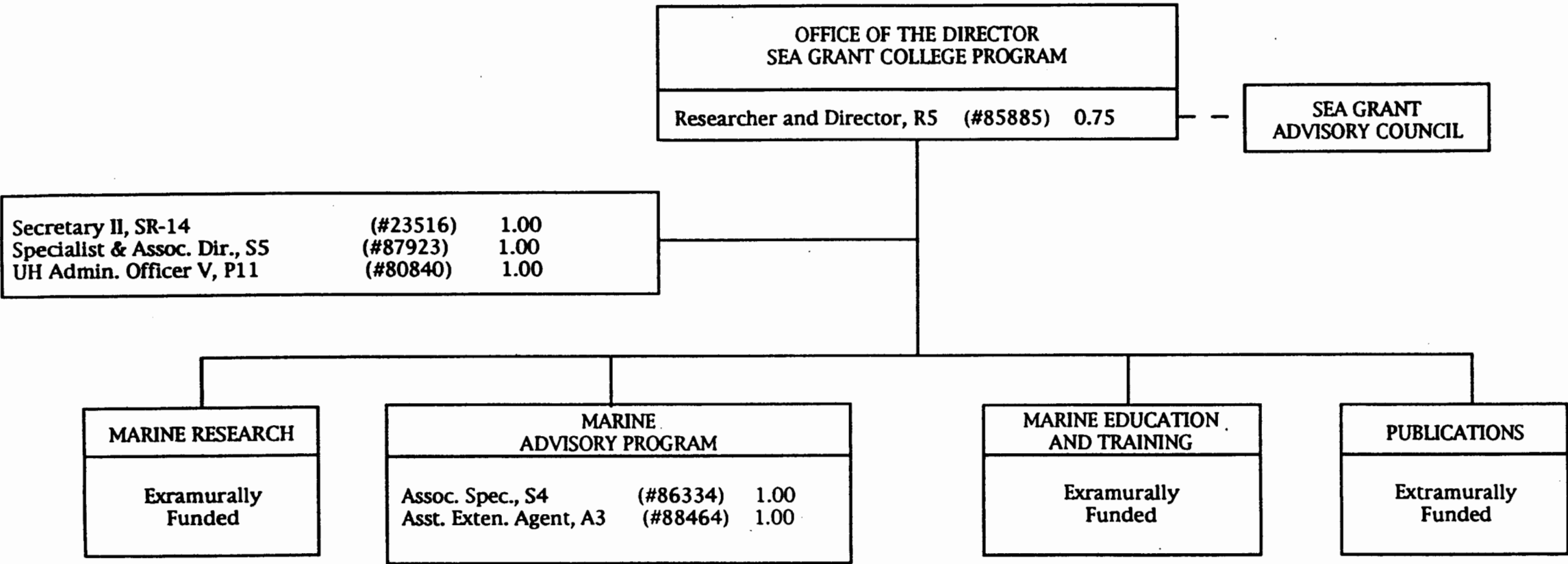


CHART UPDATED
JUL 31 1997
DATE _____

STATE OF HAWAII
UNIVERSITY OF HAWAII
UNIVERSITY OF HAWAII AT MANOA
SCHOOL OF OCEAN AND EARTH
SCIENCE AND TECHNOLOGY

ORGANIZATION CHART XXXI

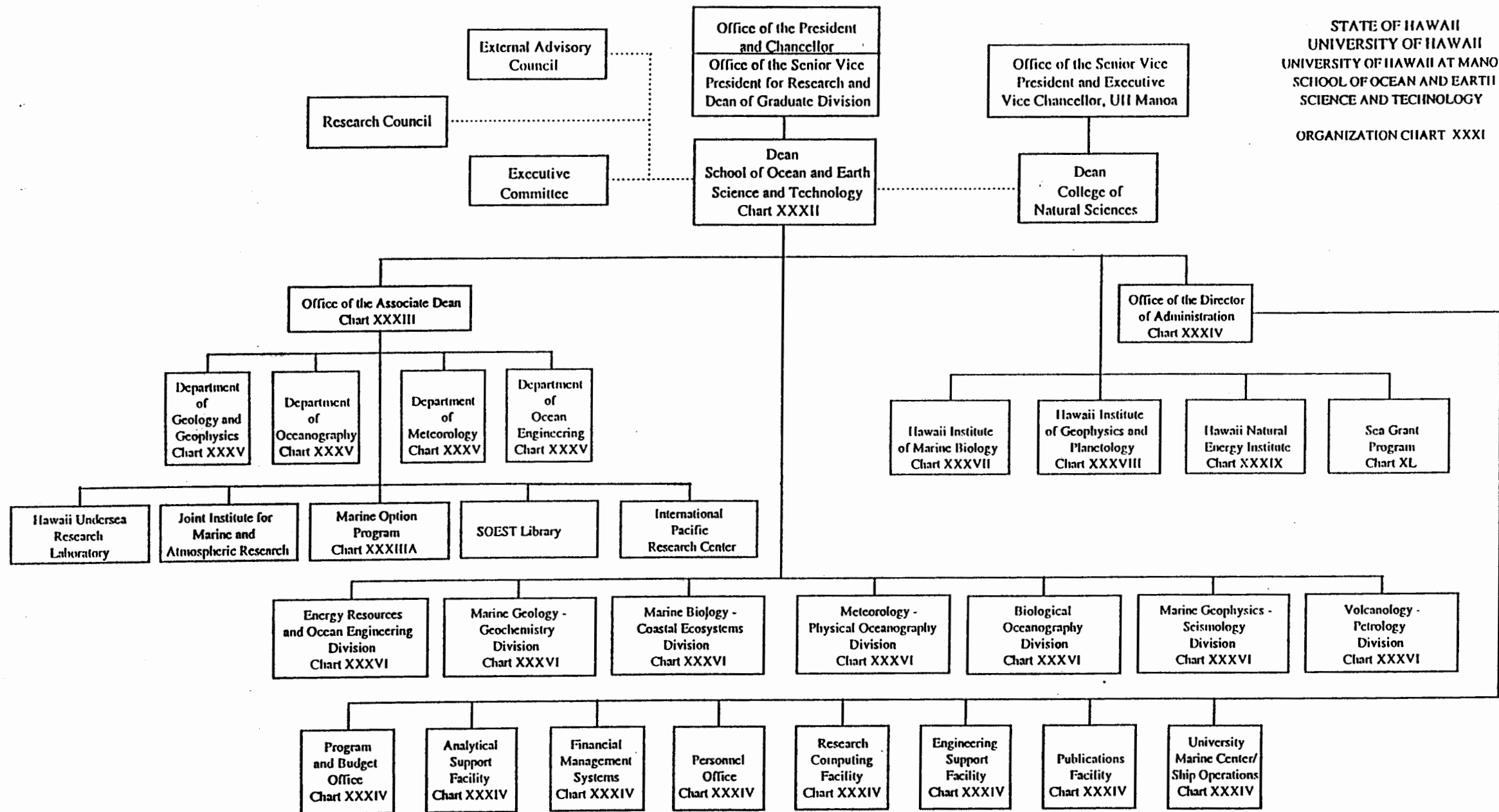
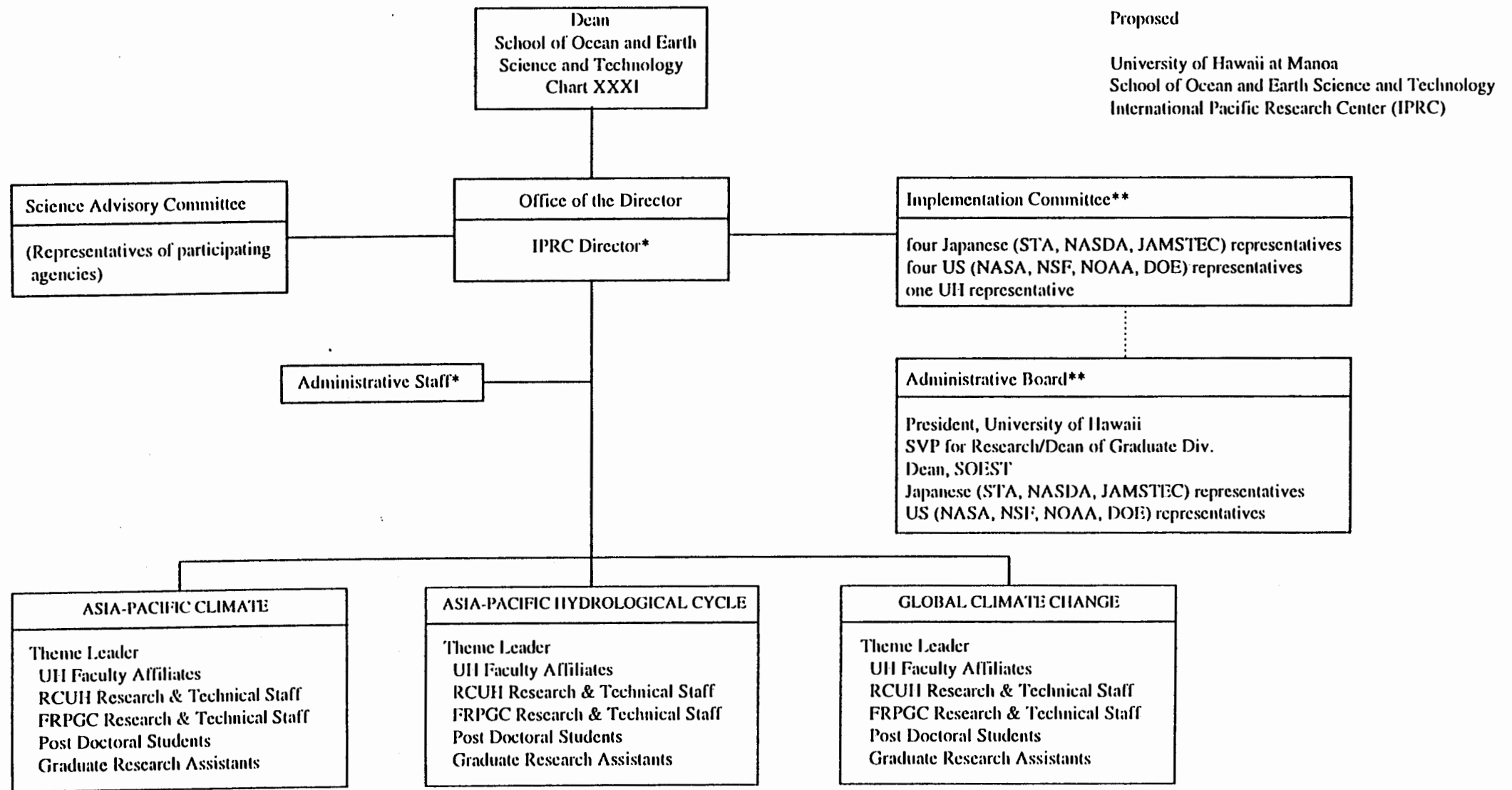


CHART UPDATED
DATE JUL 31 1997



*See Implementation Plan.

**Administrative Board functions overlap with those of the Implementation Committee; Administrative Board may replace Implementation Committee when initial start-up phase is completed.

STATE OF HAWAII
UNIVERSITY OF HAWAII
UNIVERSITY OF HAWAII AT MANOA
SCHOOL OF OCEAN AND EARTH
SCIENCE AND TECHNOLOGY
HAWAII INSTITUTE OF MARINE BIOLOGY
ORGANIZATION CHART
CHART XXXVII

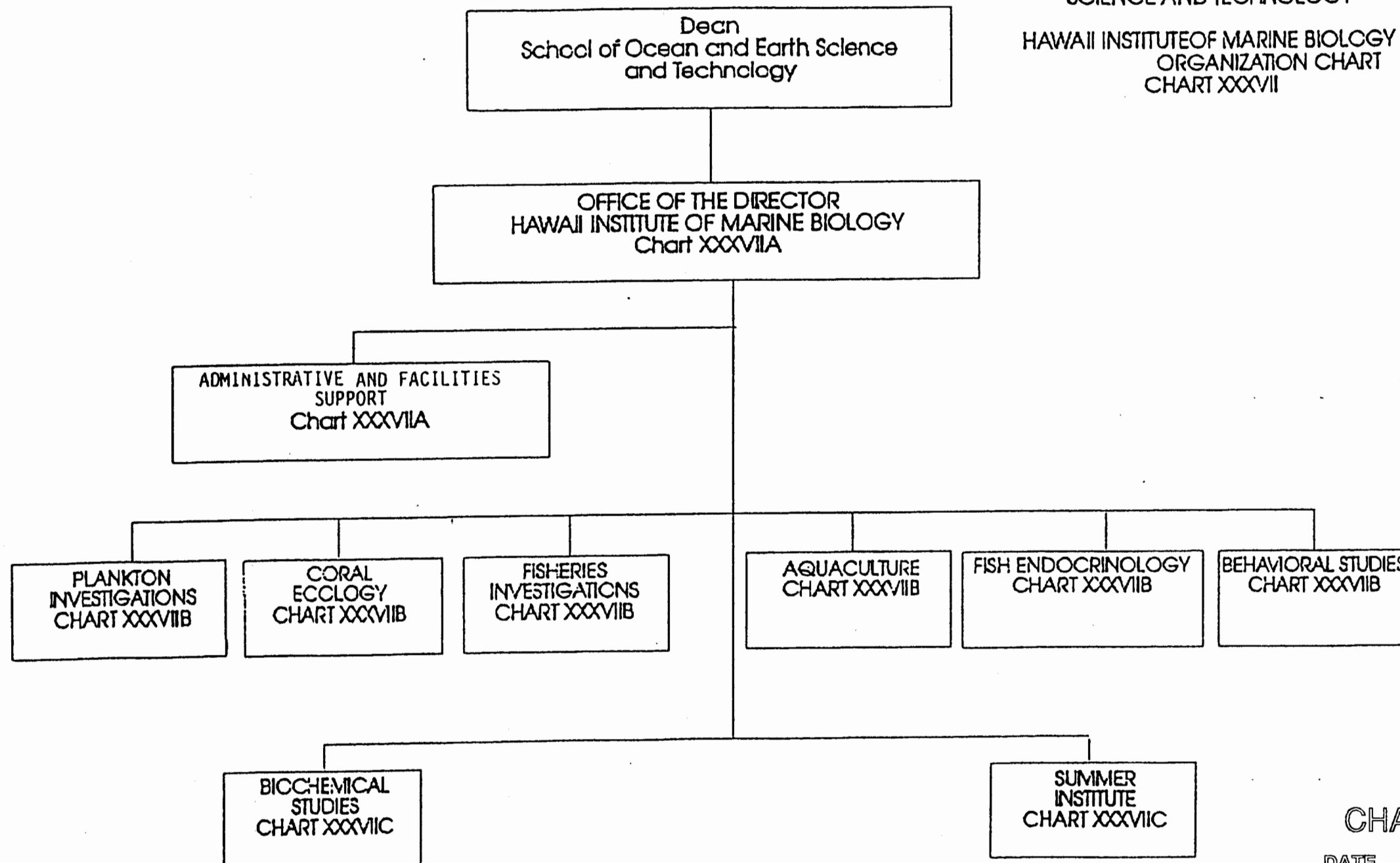
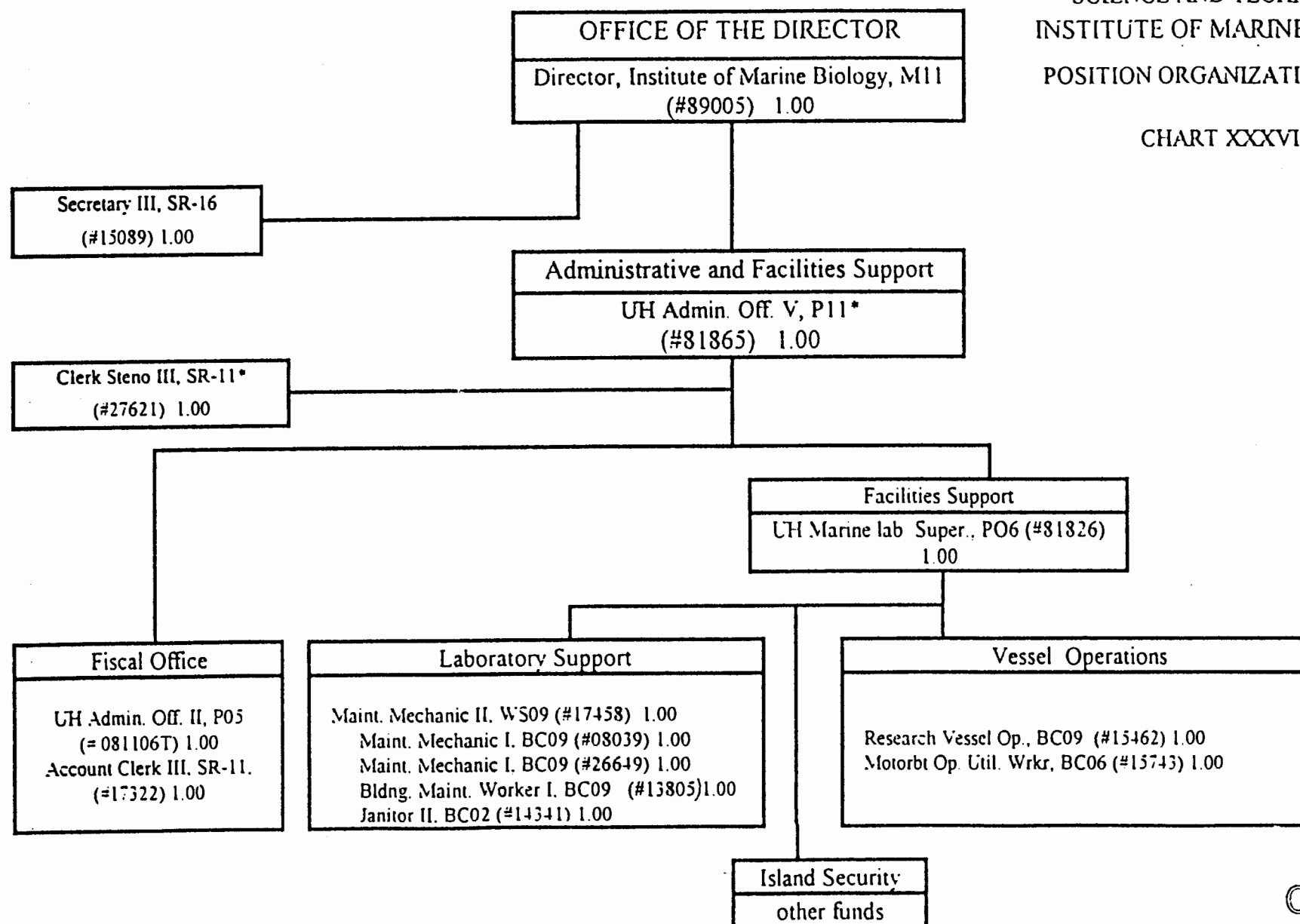


CHART UPDATED
JUL 31 1997
DATE _____

STATE OF HAWAII
 UNIVERSITY OF HAWAII
 UNIVERSITY OF HAWAII AT MANOA
 SCHOOL OF OCEAN AND EARTH
 SCIENCE AND TECHNOLOGY
 INSTITUTE OF MARINE BIOLOGY
 POSITION ORGANIZATION CHART

CHART XXXVIIA



* To be reclassified

CHART UPDATED
 DATE JUL 31 1997