

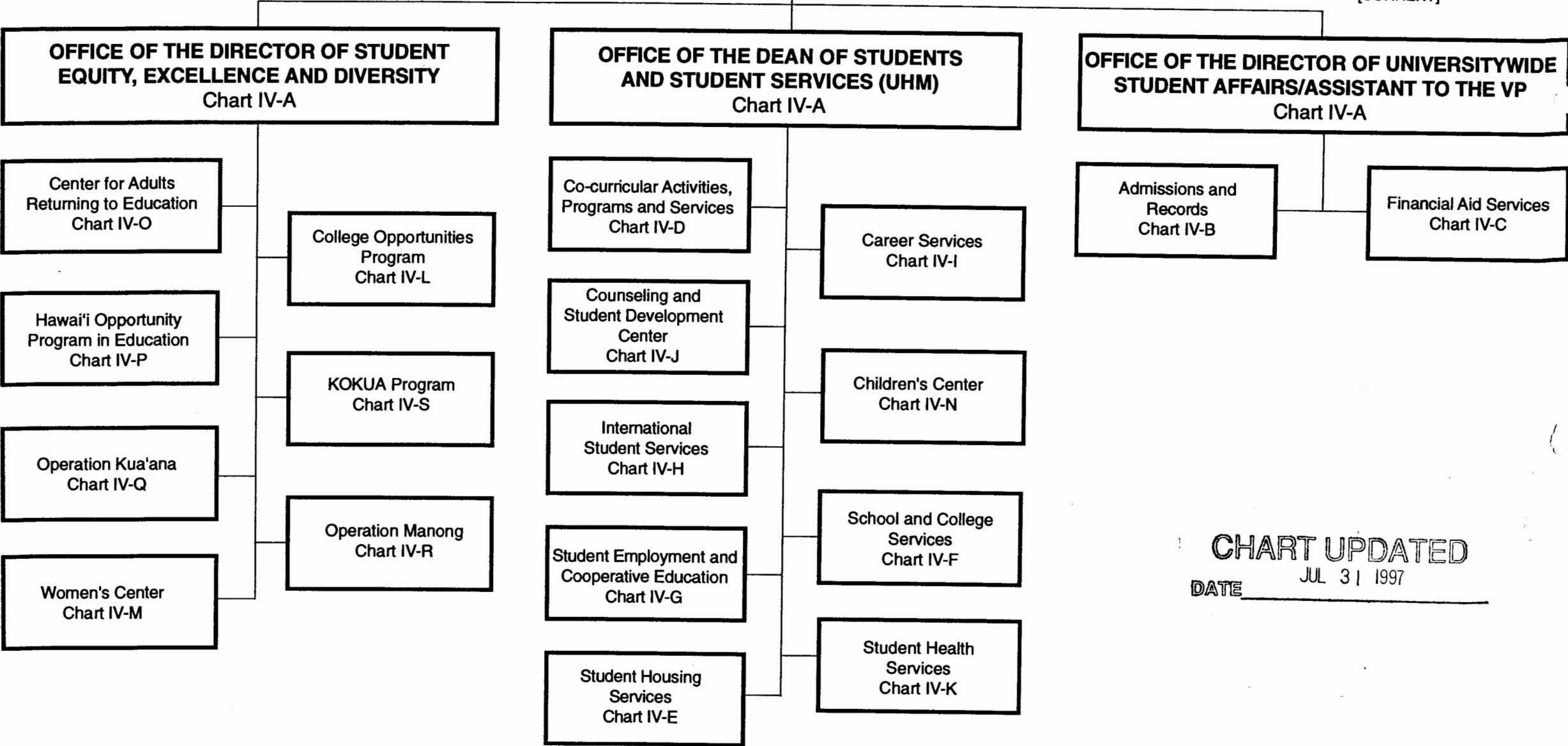
**OFFICE OF THE VICE PRESIDENT FOR STUDENT AFFAIRS**  
Chart IV-A

State of Hawai'i  
University of Hawai'i  
University of Hawai'i at Mānoa

Office:  
UHM Student Services

Chart: IV  
[CURRENT]

**OFFICE OF ADMINISTRATIVE SERVICES**  
Chart IV-A



**CHART UPDATED**  
JUL 31 1997  
DATE \_\_\_\_\_

**OFFICE OF THE VICE PRESIDENT FOR STUDENT AFFAIRS**

Vice President for Student Affairs, M13, #89103

State of Hawai'i  
University of Hawai'i  
University of Hawai'i at Mānoa

Office:  
**UHM Student Services**

Chart: IV-A  
[CURRENT]

**ADMINISTRATIVE SUPPORT**

Private Secretary II, SR22, #37046  
University Academic Affairs Program Officer,  
M4, #89325

**OFFICE OF ADMINISTRATIVE SERVICES**

UH Administrative Officer VI, P13, #80146

**FISCAL SERVICES**

Account Clerk III, SR11, #21426

**PERSONNEL SERVICES**

UH Personnel Officer II, P05, #81879  
Personnel Clerk IV, SR11, #44556

**CHART UPDATED**

**DATE** JUL 31 1997

**OFFICE OF THE DIRECTOR OF STUDENT  
EQUITY, EXCELLENCE AND DIVERSITY**

Director of Minority Students, M6, #89298  
UH Administrative Officer III, P07, #81088  
Specialist, S5, #85072

**OFFICE OF THE DEAN OF STUDENTS  
AND STUDENT SERVICES (UHM)**

Dean of Student Services (UHM), M9, #89133  
Secretary III, SR16, #00745  
Assistant Specialist, S3, #82635 \*  
Junior Specialist, S2, #84173

**OFFICE OF THE DIRECTOR OF UNIVERSITYWIDE  
STUDENT AFFAIRS/ASSISTANT TO THE VP**

Special Assistant to the Vice President, M6, #89309  
Secretary II, SR14, #44996  
UH Institutional Analyst III, P10, #81734  
UH Educational Specialist III, P09, #81210 \*

General Funds 16.00 (1.00 on UOH902, 1.00 trf  
to Acad Affrs) \*

Office:

**UHM Student Services  
Admissions and Records**

Chart: **IV-B**  
[CURRENT]

**OFFICE OF THE DIRECTOR OF UNIVERSITYWIDE  
STUDENT AFFAIRS/ASSISTANT TO THE VP**

**ADMISSIONS AND RECORDS**

Specialist, S5, #82701

**ADMINISTRATIVE SUPPORT**

Secretary II, SR 14, #14866  
Specialist, S5, #83776  
UH Student Services Specialist IV, P12, #81154 (.3)  
Secretary II, SR 14, #00751

**ADMISSIONS AND RESIDENCY**

UH Student Services Specialist IV, P12, #81154 (.7)  
Clerk Supervisor III, SR14, #00748  
Clerk IV, SR10, #00772, #12550, #12842, #12843  
#13495, #13496, #18009, #21427  
UH Student Services Specialist III, P09, #80626  
UH Student Services Specialist III, P09, #81414  
UH Student Services Specialist III, P09, #80625  
Clerk IV, SR10, #11496  
Clerk IV, SR10, #26538  
UH Student Services Specialist II, P06, #80530

**RECORDS AND REGISTRATION**

UH Student Services Specialist IV, P12, #81614  
UH Student Services Specialist III, P09, #80658  
Clerk Supervisor III, SR14, #17447  
Clerk IV, SR10, #00750, #13959, #14863, #14864  
#14865(R), #15502, #17450, #18010  
#21430  
Clerk III, SR8, #13494 (R)  
Clerk III, SR8, #26539 (R)  
Clerk Typist II, SR8, #40006  
Scheduler, SR20, #05837

**INFORMATION AND COMPUTER SERVICES**

UH Student Services Specialist IV, P12, #81070  
UH Computer Specialist IV, P09, #80017  
UH Student Services Specialist I, P03, #81071  
Clerk Supervisor II, SR12, #22322  
Clerk IV, SR10, #40004  
Clerk IV, SR10, #40005  
Clerk-Stenographer II, SR9, #22321  
Clerk III, SR8, #15501  
Clerk III, SR8, #40003  
UH Computer Specialist III, P07, #80018

General Funds 43.00  
(R) Revolving Funds 3.00

**CHART UPDATED**

DATE JUL 31 1997

**OFFICE OF THE DIRECTOR OF UNIVERSITYWIDE  
STUDENT AFFAIRS/ASSISTANT TO THE VP**

State of Hawai'i  
University of Hawai'i  
University of Hawai'i at Mānoa

Office:

**UHM Student Services  
Financial Aid Services**

Chart: IV-C  
[CURRENT]

**FINANCIAL AID SERVICES**

Director of Financial Aid, M4, #89184

**ADMINISTRATIVE SUPPORT**

Secretary II, SR14, #05737

**PROGRAM SPECIALISTS**

UH Student Services Specialist III, P09, #81913  
UH Student Services Specialist II, P06, #81608  
UH Student Services Specialist II, P06, #81607  
UH Student Services Specialist II, P06, #81606  
UH Student Services Specialist II, P06, #81609  
UH Student Services Specialist II, P06, #81151  
UH Student Services Specialist II, P06, #80922

**DATA AND CLERICAL SUPPORT SECTION**

Clerical Supervisor III, SR14, #17599  
Clerk-Typist III, SR10, #16967  
Clerk-Typist III, SR10, #15265  
Clerk-Typist III, SR10, #17600  
Clerk-Typist III, SR10, #10929  
Clerk III, SR8, #44397

General Funds 15.00

**CHART UPDATED**

DATE JUL 31 1997

OFFICE OF THE DEAN OF STUDENTS AND STUDENT SERVICES  
(UHM)

State of Hawai'i  
University of Hawai'i  
University of Hawai'i at Mānoa

Office:  
UHM Student Services  
Co-Curricular Activities,  
Programs and Services

Chart: IV-D  
[CURRENT]

CO-CURRICULAR ACTIVITIES, PROGRAMS & SERVICES  
Director of Bureau of Student Activities, M4, #89190

ADMINISTRATIVE AND FISCAL SUPPORT

UH Administrative Officer III, P07, #80163 (R)  
UH Adm/Fiscal Support Specialist, P01, #80649 (R)  
Account Clerk IV, SR13, #25700 (R)  
Account Clerk II, SR08, #45362 (R)

CLERICAL SUPPORT

Secretary II, SR14, #13587  
Clerk-Typist III, SR10, #28134 (R)  
Clerk-Typist II, SR08, #25699 (R)  
Clerk II, SR06, #25698 (R)

INTRAMURAL SPORTS

Specialist, S5, #83512  
Specialist, S5, #85083  
Junior Specialist, S2, #83788  
Clerk-Typist II, SR08, #26460

STUDENT LEADERSHIP DEVELOPMENT  
& CO-CURRICULAR INTERVENTIONS  
PROGRAMS

Assistant Specialist, S3, #82864  
Junior Specialist, S2, #83668  
Junior Specialist, S2, #82573  
Assistant Specialist, S3, #82597  
UH Student Services Specialist II, P06, #81510(R)  
UH Student Services Specialist II, P06, #81374(R)  
UH Student Services Specialist II, P06, #80025(R)  
UH Publication Specialist III, P07, #81186(R)  
UH Adm/Fiscal Support Specialist, P01, #81137(R)  
Junior Specialist, S2, #88334(R)  
UH Publication Spec, #96504F,(R) (TBE)\*  
UH Publication Spec, #96505F,(R) (TBE)\*  
UH Publication Spec, #96506F,(R) (TBE)\*

OPERATIONAL PROGRAMS,  
FACILITIES AND SERVICES

UH Student Services Specialist III, P09, #80660(R)  
Building Maintenance Worker I, WB09, #28597(R)  
Janitor II, WB02, #25329(R), #25392(R),  
#44089(R), #46560(R)  
School Custodian II, BC02, #44109(R)  
Bldg & Grnds Util Worker, BC05, #45379(R),  
#44085(R)  
UH Student Services Specialist II, P06, #80631(R)  
UH Student Services Specialist I, P03, #80942(R)  
Junior Specialist, S2, #88765(R)

\*Pending Establishment

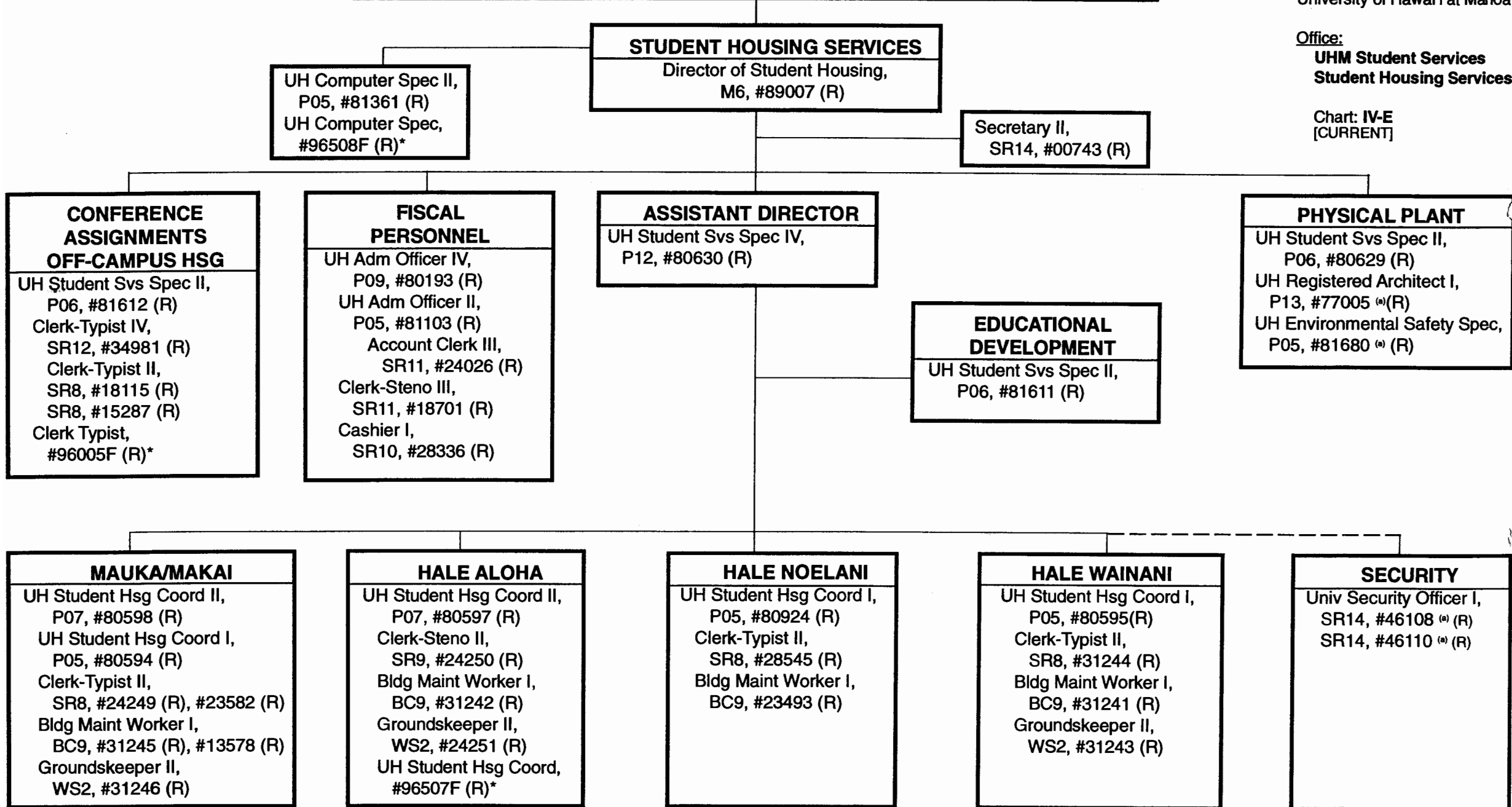
General Funds 10.00  
(R) Revolving Funds 28.00

OFFICE OF THE DEAN OF STUDENTS AND STUDENT SERVICES (UHM)

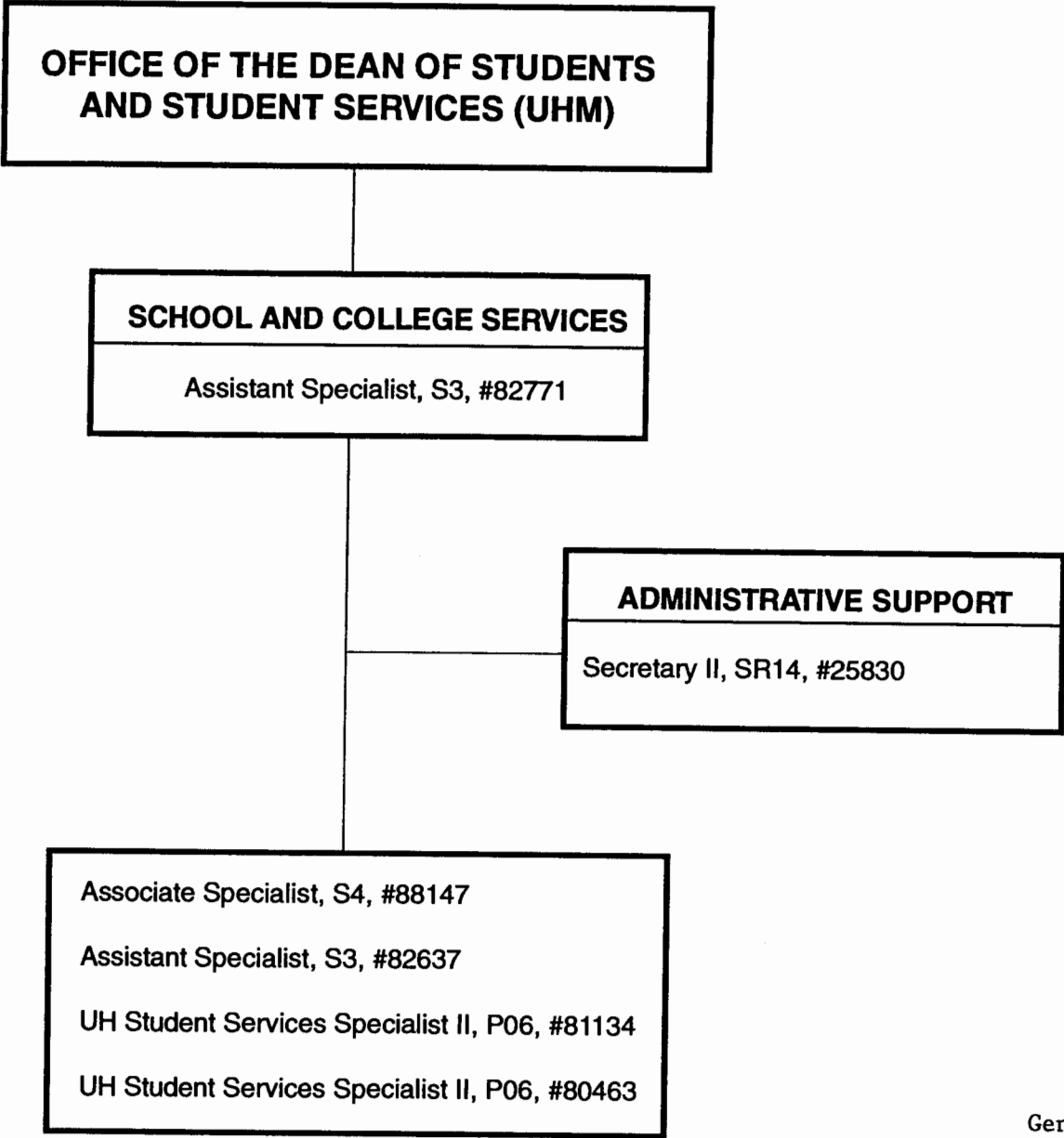
State of Hawai'i  
University of Hawai'i  
University of Hawai'i at Mānoa

Office:  
UHM Student Services  
Student Housing Services

Chart: IV-E  
[CURRENT]



(a) Student Housing Services position assigned to and supervised by Campus Operations  
\*Pending Establishment  
Positions pending abolishment due to 95-96 RIF action but still included in appropriation: #13566, #31273, #35375, #36106, #46109

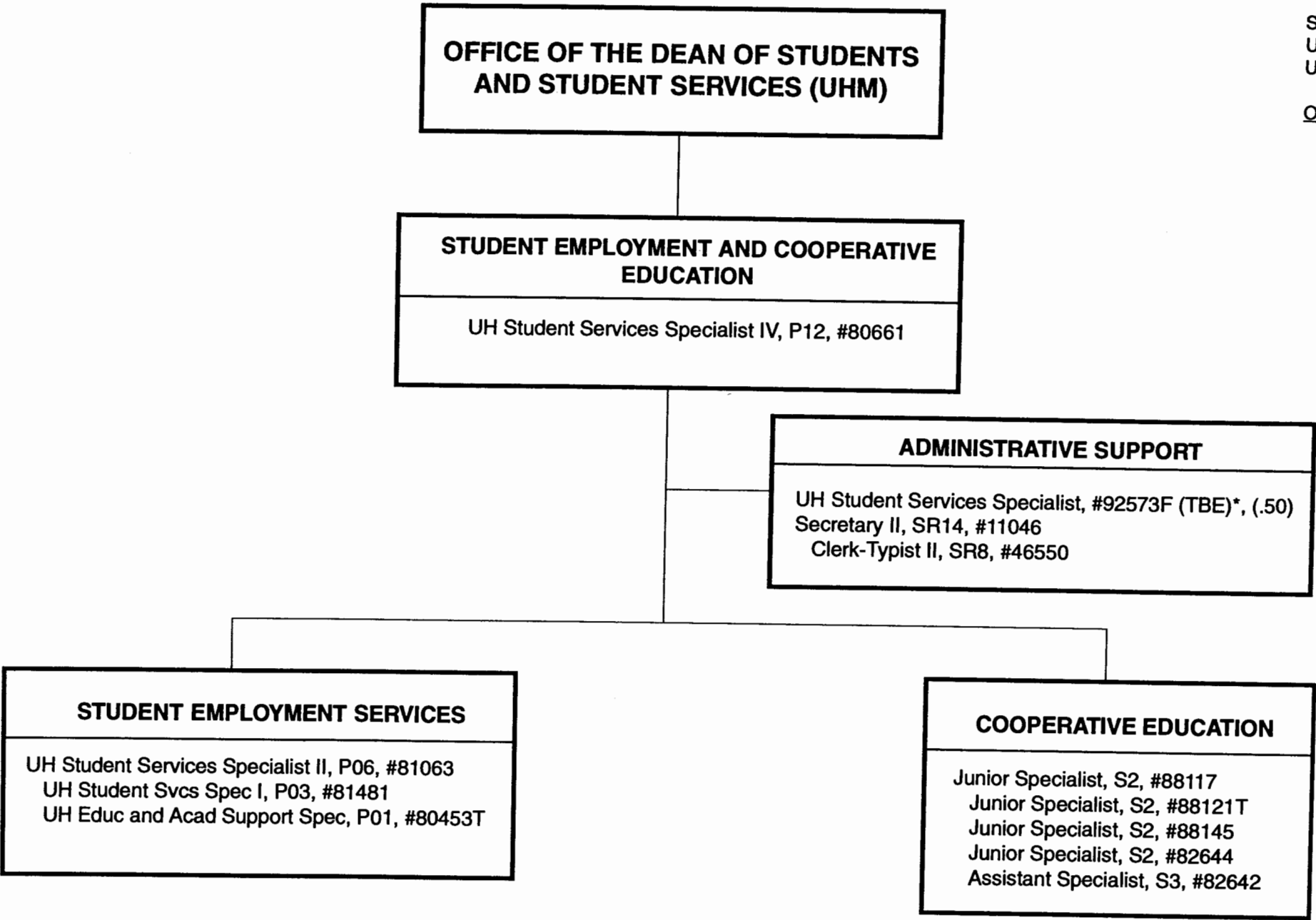


General Funds      6.00

**CHART UPDATED**  
JUL 31 1997  
DATE \_\_\_\_\_

Office:  
UHM Student Services  
Student Employment and  
Cooperative Education

Chart: IV-G  
[CURRENT]



\*Pending Establishment

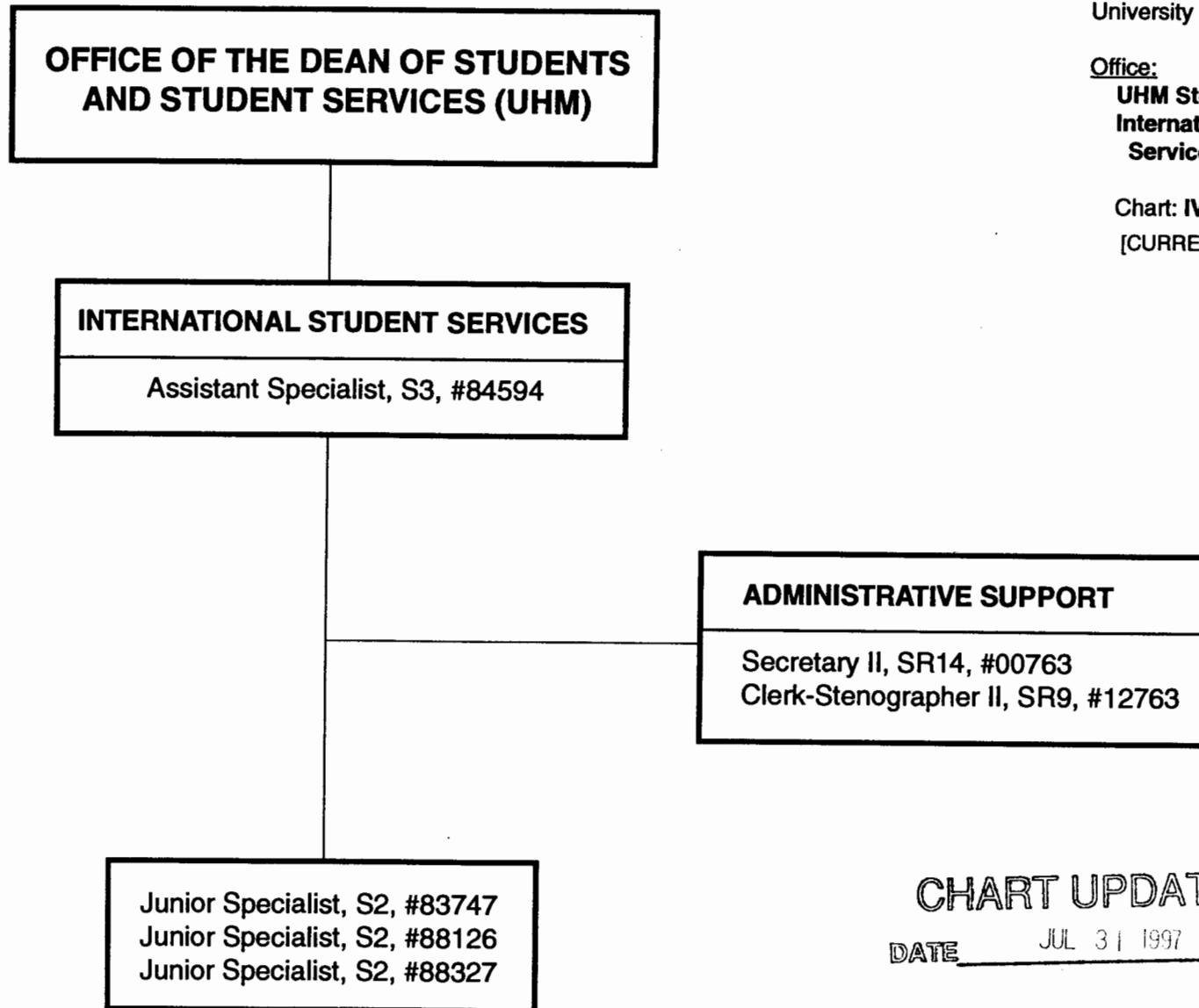
CHART UPDATED  
DATE JUL 31 1997

General Funds	9.50 (perm)
General Funds	2.00 (auth temp)



Office:  
UHM Student Services  
International Student  
Services

Chart: IV-H  
[CURRENT]



**CHART UPDATED**

DATE JUL 31 1997

General Funds 4.00\*

\*2.00 FTE(#88126,#88327 for Study Abroad)  
to be transferred to Academic Affairs)

**OFFICE OF THE DEAN OF STUDENTS  
AND STUDENT SERVICES (UHM)**

<b>CAREER SERVICES</b>
Specialist, S5, #83382

<b>ADMINISTRATIVE SUPPORT</b>
Secretary II, SR14, #14337

Junior Specialist, S2, #88125
Junior Specialist, S2, #83548
Associate Specialist, S4, #88325
Junior Specialist, S2, #88326
UH Student Services Specialist II, P06, #81434

State of Hawai'i  
University of Hawai'i  
University of Hawai'i at Mānoa

Office:  
UHM Student Services  
Career Services

Chart: IV-I  
[CURRENT]

CHART UPDATED

DATE JUL 31 1997

Office:

**UHM Student Services  
Counseling and Student  
Development Center**

Chart: **IV-J**

[CURRENT]

**OFFICE OF THE DEAN OF STUDENTS  
AND STUDENT SERVICES (UHM)**

**COUNSELING AND STUDENT  
DEVELOPMENT CENTER**

Specialist, S5, #83151

**ADMINISTRATIVE SUPPORT**

Secretary II, SR14, #00746

**LEARNING ASSISTANCE**

Assistant Specialist, S3, #84554  
Assistant Specialist, S3, #88143

**TESTING**

UH Student Services Specialist II, P06, #80632  
Junior Specialist, S2, #84869 (.25) (s)

**COUNSELING**

Specialist, S5, #82048 (.50)  
Specialist, S5, #83635 (.50)  
Specialist, S5, #82695  
Associate Specialist, S4, #82698  
Assistant Specialist, S3, #83035  
Assistant Specialist, S3, #83114  
Associate Specialist, S4, #84139

**CHART UPDATED**  
DATE JUL 31 1997

General Funds 11.00  
(S)Special Funds .25

Office:

UHM Student Services  
Student Health Services

Chart: IV-K

[CURRENT]

**OFFICE OF THE DEAN OF STUDENTS  
AND STUDENT SERVICES (UHM)**

**STUDENT HEALTH SERVICES**

Specialist, S5, #82341

**PHARMACY**

UH Pharmacist, P12, #81877 (.25) (R)

**ADMINISTRATIVE SUPPORT**

Assistant Specialist, S3, #83539  
Secretary II, SR14, #15353  
Account Clerk III, SR11, #21512  
Medical Records Technician VI, SR13, #03723  
Clerk-Typist II, SR8, #35147 (.50)

**MEDICAL STAFF**

Specialist, S5, #84576 (.50) (R)  
Specialist, S5, #84576A (.50) (R)  
Specialist, S5, #83261 (.50) (R)  
Specialist, S5, #83397 (.50) (R)  
Specialist, S5, #84581 (.50)

**NURSING STAFF**

Registered Professional Nurse IV, SR22, #10312 (R)  
Registered Professional Nurse III, SR20, #13616 (R)  
Registered Professional Nurse III, SR20, #22672 (R)  
Registered Professional Nurse III, SR20, #13615 (R)  
Registered Professional Nurse III, SR20, #18091 (R)  
Registered Professional Nurse III, SR20, #13614  
Registered Professional Nurse III, SR20, #13730 (.50)

**FAMILY PLANNING CLINIC**

Registered Professional Nurse V,  
SR24, #41706 (R)

**LABORATORY**

UH Medical Technician, P07, #80671 (.50)

**CHART UPDATED**

DATE JUL 31 1997

General Funds 8.00  
(R) Revolving Funds 8.25

**OFFICE OF THE DIRECTOR OF STUDENT  
EQUITY, EXCELLENCE AND DIVERSITY**

**COLLEGE OPPORTUNITIES PROGRAM**  
UH Educational Specialist IV, P12, #80582

**ADMINISTRATIVE SUPPORT**  
Secretary II, SR14, #23086

UH Student Services Specialist II, P06, #80628  
UH Student Services Specialist II, P06, #81736 (.50)  
UH Student Services Specialist I, P03, #80606

State of Hawai'i  
University of Hawai'i  
University of Hawai'i at Mānoa

Office:  
**UHM Student Services  
College Opportunities  
Program**

Chart: IV-L  
[CURRENT]

General Funds      4.50

**CHART UPDATED**  
DATE     JUL 31 1997

**OFFICE OF THE DIRECTOR OF STUDENT  
EQUITY, EXCELLENCE AND DIVERSITY**

State of Hawai'i  
University of Hawai'i  
University of Hawai'i at Mānoa

Office:  
**UHM Student Services  
Women's Center**

Chart: **IV-M**  
[CURRENT]

**WOMEN'S CENTER**

Junior Specialist, S2, #88123T, (.50)  
Junior Specialist, S2, #88144T, (.50)  
Clerk-Typist II, SR8, #44988T, (.50)

General Funds      1.50 (Auth temp)

Authorized Temporary Positions

**CHART UPDATED**

DATE      JUL 31 1997

**OFFICE OF THE DEAN OF STUDENTS  
AND STUDENT SERVICES (UHM)**

State of Hawai'i  
University of Hawai'i  
University of Hawai'i at Mānoa

Office:  
**UHM Student Services  
Children's Center**

Chart: **IV-N**  
[CURRENT]

<b>CHILDREN'S CENTER</b>
Specialist, S5, #88318

<b>ADMINISTRATIVE SUPPORT</b>
UH Early Childhood Spec IV, P07, #80232 UH Administrative Officer I, P03, #80739(R)

<b>TEACHING STAFF</b>
UH Early Childhood Spec IV, P09, #80029 UH Early Childhood Spec III, P07, #80109 UH Early Childhood Spec II, P05, #80233 UH Early Childhood Spec III, P07, #80234T UH Early Childhood Spec II, P05, #80424T UH Early Childhood Spec III, P07, #80455T UH Early Childhood Spec III, P07, #80541 (R) UH Early Childhood Spec II, P05, #80588 (R) UH Early Childhood Spec II, P05, #80611 (R) UH Early Childhood Spec IV, PO9, #80496T (.75)

**CHART UPDATED**

DATE JUL 31 1997

General Funds	5.00	(perm)
General Funds	3.75	(auth temp)
(R) Revolving Funds	4.00	

**OFFICE OF THE DIRECTOR OF STUDENT  
EQUITY, EXCELLENCE AND DIVERSITY**

<b>CENTER FOR ADULTS RETURNING TO EDUCATION</b>
Associate Specialist, S4, #88317 Junior Specialist, S2, #88762 Clerk Typist II, SR8, #43364 (.50)

State of Hawai'i  
University of Hawai'i  
University of Hawai'i at Mānoa

Office:  
**UHM Student Services  
Center for Adults  
Returning to Education**

Chart: IV-O  
[CURRENT]

General Funds      2.50

**CHART UPDATED**

DATE      JUL 31 1997



**OFFICE OF THE DIRECTOR OF STUDENT  
EQUITY, EXCELLENCE AND DIVERSITY**

**HAWAI'I OPPORTUNITY PROGRAM  
IN EDUCATION**

State of Hawai'i  
University of Hawai'i  
University of Hawai'i at Mānoa

Office:

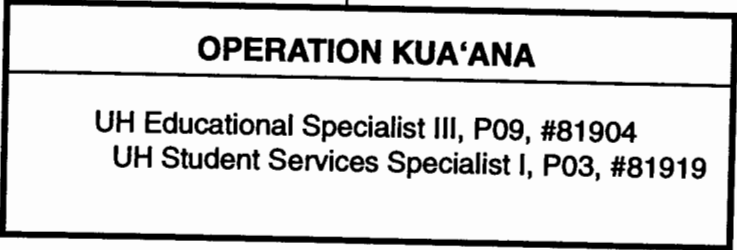
**UHM Student Services  
Hawai'i Opportunity  
Program in Education**

Chart: IV-P  
[CURRENT]

**CHART UPDATED**

DATE JUL 31 1997

**OFFICE OF THE DIRECTOR OF STUDENT  
EQUITY, EXCELLENCE AND DIVERSITY**



State of Hawai'i  
University of Hawai'i  
University of Hawai'i at Mānoa

Office:  
**UHM Student Services  
Operation Kua'ana**

Chart: **IV-Q**  
[CURRENT]

General Funds      2,00

**CHART UPDATED**  
DATE     JUL 31 1997

**OFFICE OF THE DIRECTOR OF STUDENT  
EQUITY, EXCELLENCE AND DIVERSITY**

**OPERATION MANONG**  
UH Educational Specialist III, P09, #80517

**ADMINISTRATIVE SUPPORT**  
Clerk-Typist II, SR8, #43052

Associate Specialist, S4, #82281  
UH Student Services Specialist I, P03, #81799  
UH Student Services Specialist I, P03, #81801

State of Hawai'i  
University of Hawai'i  
University of Hawai'i at Mānoa

Office:  
UHM Student Services  
Operation Manong

Chart: IV-R  
[CURRENT]

General Funds 5.00

CHART UPDATED  
DATE JUL 31 1997

**OFFICE OF THE DIRECTOR OF STUDENT  
EQUITY, EXCELLENCE AND DIVERSITY**

**KOKUA PROGRAM**

Educational Specialist III, P09, #80666

Educational Specialist I, P03, #80636

Educational Specialist I, P03, #80608

Educational Specialist II, P06, #81566

UH Educational Specialist I, P03 #81102

State of Hawai'i  
University of Hawai'i  
University of Hawai'i at Mānoa

Office:

**UHM Student Services  
KOKUA Program**

Chart: **IV-S**  
[CURRENT]

General Funds 5.00

**CHART UPDATED**

DATE JUL 31 1997