

CHART UPDATED  
 DATE JUL 31 1997

STATE OF HAWAII  
UNIVERSITY OF HAWAII  
UNIVERSITY OF HAWAII AT MANOA  
COLLEGE OF TROPICAL AGRICULTURE AND HUMAN RESOURCES

OFFICE OF THE DEAN  
POSITION ORGANIZATION CHART: VI-A

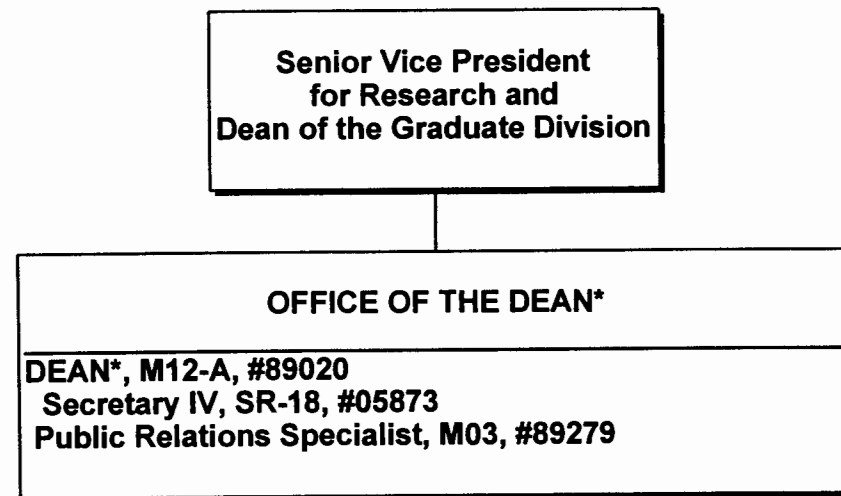


CHART UPDATED  
DATE JUL 31 1997

\* & Director of Cooperative Science & Education

STATE OF HAWAII  
UNIVERSITY OF HAWAII  
UNIVERSITY OF HAWAII AT MANOA  
COLLEGE OF TROPICAL AGRICULTURE AND HUMAN RESOURCES

OFFICE OF PUBLICATIONS AND INFORMATION  
POSITION ORGANIZATION CHART: VI-B

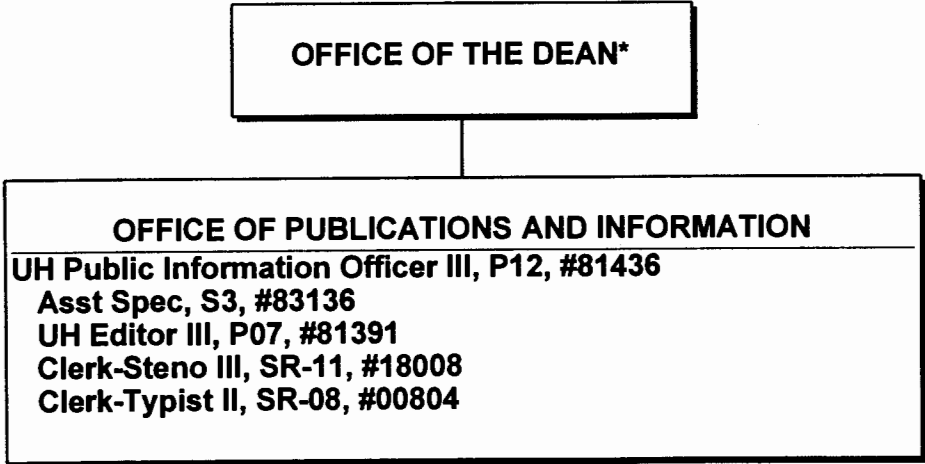


CHART UPDATED  
DATE JUL 31 1997

\* & Director of Cooperative Science & Education

STATE OF HAWAII  
UNIVERSITY OF HAWAII  
UNIVERSITY OF HAWAII AT MANOA  
COLLEGE OF TROPICAL AGRICULTURE AND HUMAN RESOURCES

OFFICE OF ADMINISTRATIVE SERVICES  
POSITION ORGANIZATION CHART: VI-C

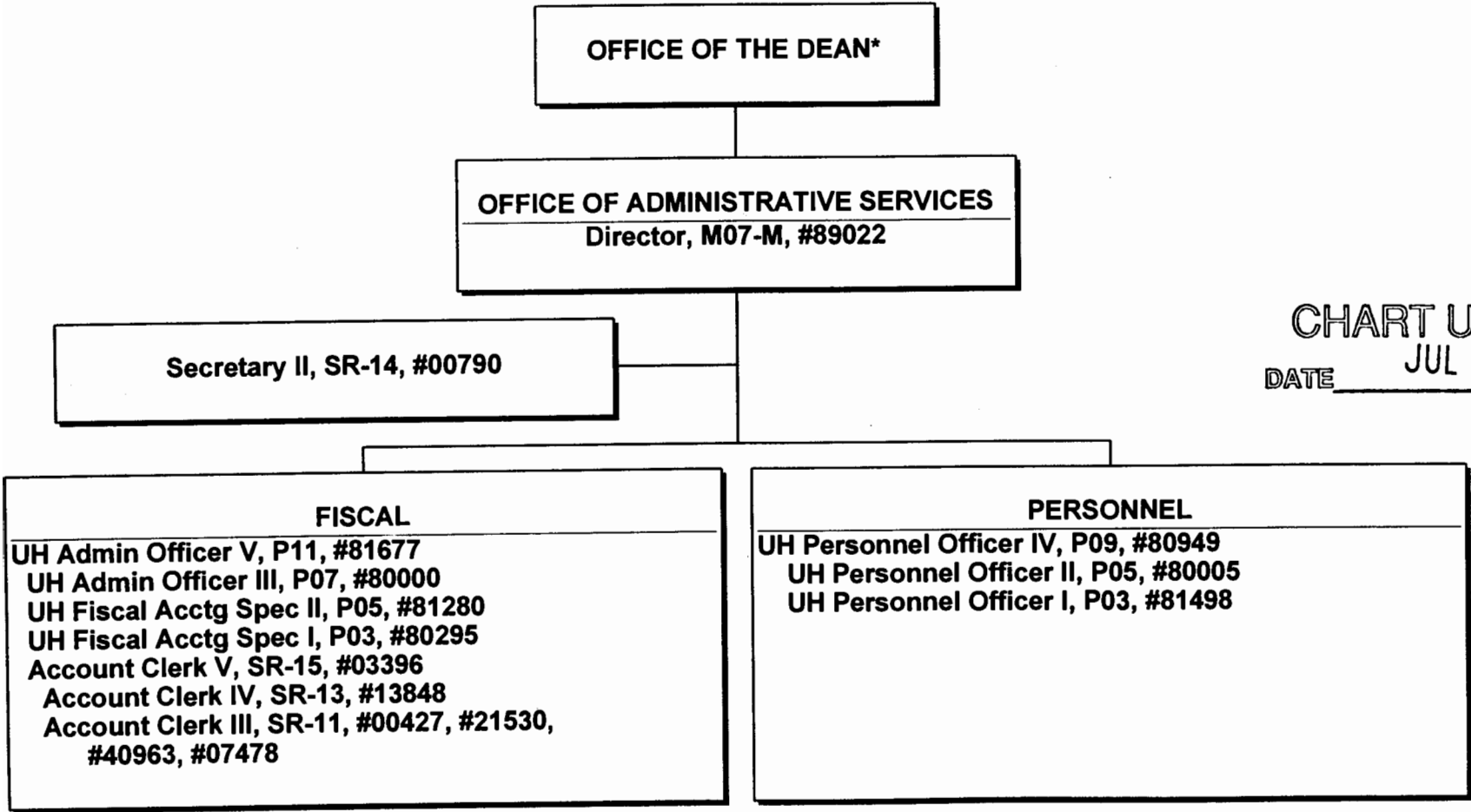


CHART UPDATED  
DATE JUL 31 1997

\* & Director of Cooperative Science & Education

STATE OF HAWAII  
UNIVERSITY OF HAWAII  
UNIVERSITY OF HAWAII AT MANOA  
COLLEGE OF TROPICAL AGRICULTURE AND HUMAN RESOURCES

OFFICE OF INTERNATIONAL PROGRAMS  
POSITION ORGANIZATION CHART: VI-D

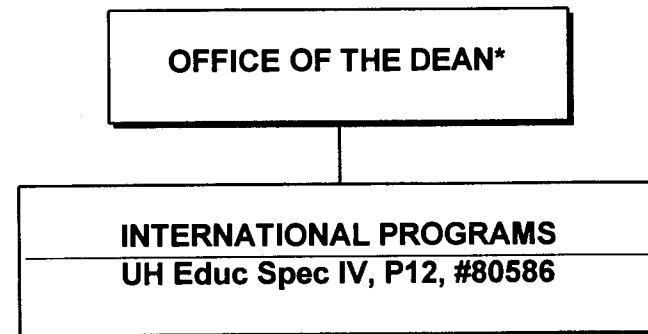


CHART UPDATED  
DATE JUL 31 1997

\*& Director of Cooperative Science & Education

STATE OF HAWAII  
UNIVERSITY OF HAWAII  
UNIVERSITY OF HAWAII AT MANOA  
COLLEGE OF TROPICAL AGRICULTURE AND HUMAN RESOURCES

OFFICE OF PLANNING AND MANAGEMENT SYSTEMS  
POSITION ORGANIZATION CHART: VI-E

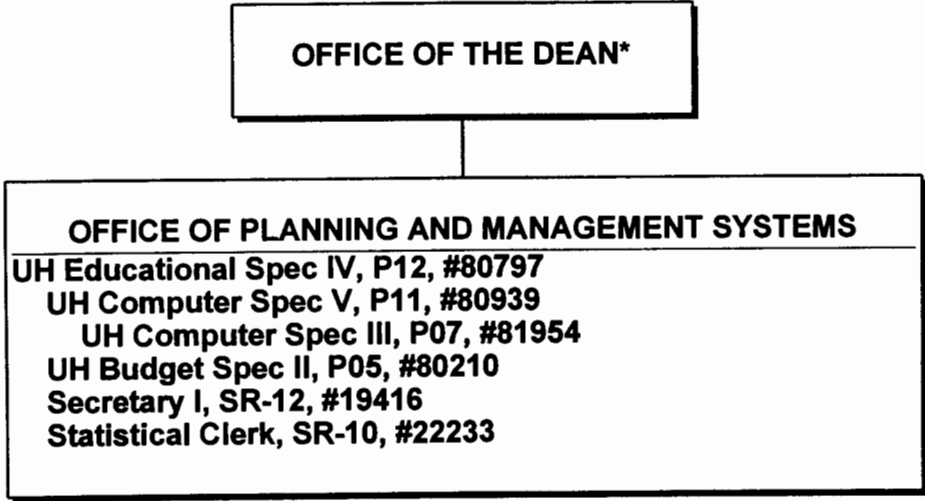


CHART UPDATED  
DATE JUL 31 1997

\* & Director of Cooperative Science & Education

STATE OF HAWAII  
UNIVERSITY OF HAWAII  
UNIVERSITY OF HAWAII AT MANOA  
COLLEGE OF TROPICAL AGRICULTURE AND HUMAN RESOURCES

OFFICE OF THE ASSOCIATE DEAN, ACADEMIC AFFAIRS  
POSITION ORGANIZATION CHART: VI-F

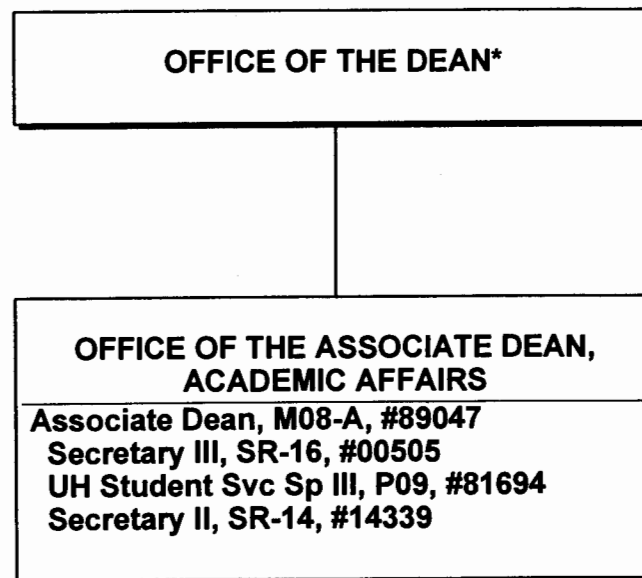


CHART UPDATED  
DATE JUL 31 1997

\* & Director of Cooperative Science & Education

STATE OF HAWAII  
UNIVERSITY OF HAWAII  
UNIVERSITY OF HAWAII AT MANOA  
COLLEGE OF TROPICAL AGRICULTURE AND HUMAN RESOURCES

CENTER ON THE FAMILY  
POSITION ORGANIZATION CHART: VI-G

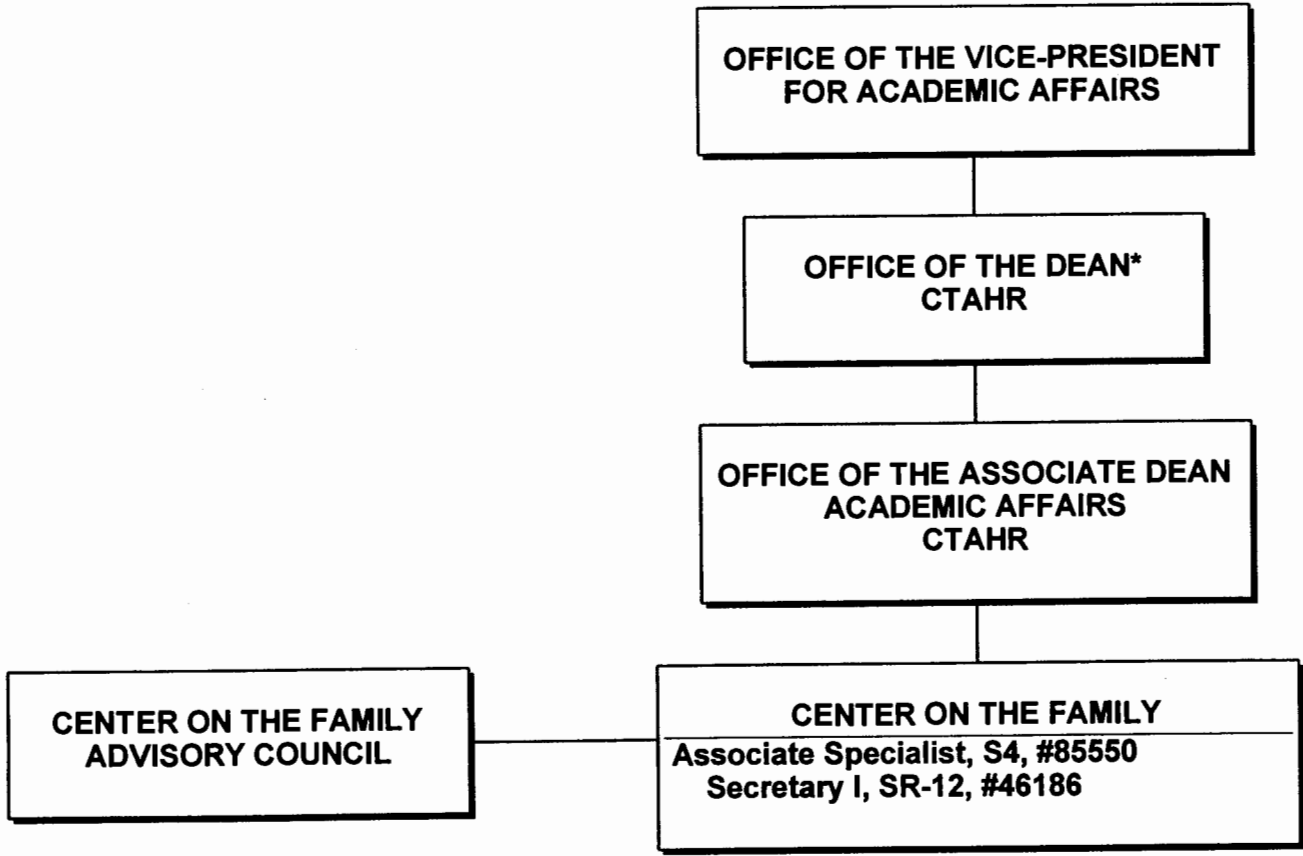


CHART UPDATED  
DATE JUL 31 1997

\* & Director of Cooperative Science & Education



STATE OF HAWAII  
UNIVERSITY OF HAWAII  
UNIVERSITY OF HAWAII AT MANOA  
COLLEGE OF TROPICAL AGRICULTURE AND HUMAN RESOURCES

PEARL CITY URBAN GARDEN CENTER  
POSITION ORGANIZATION CHART: VI-H

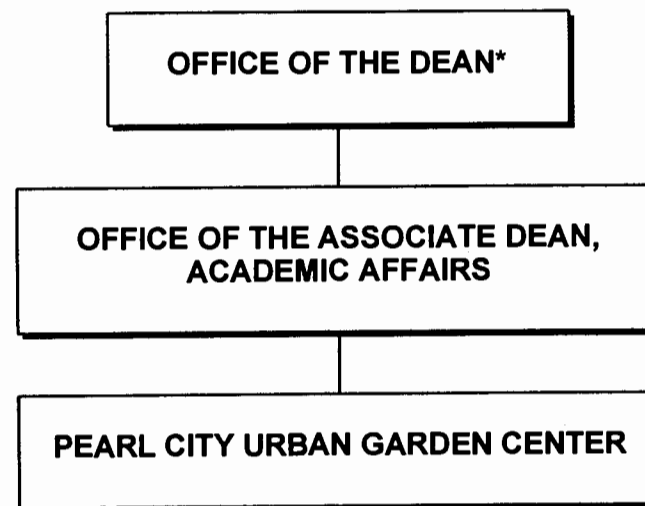
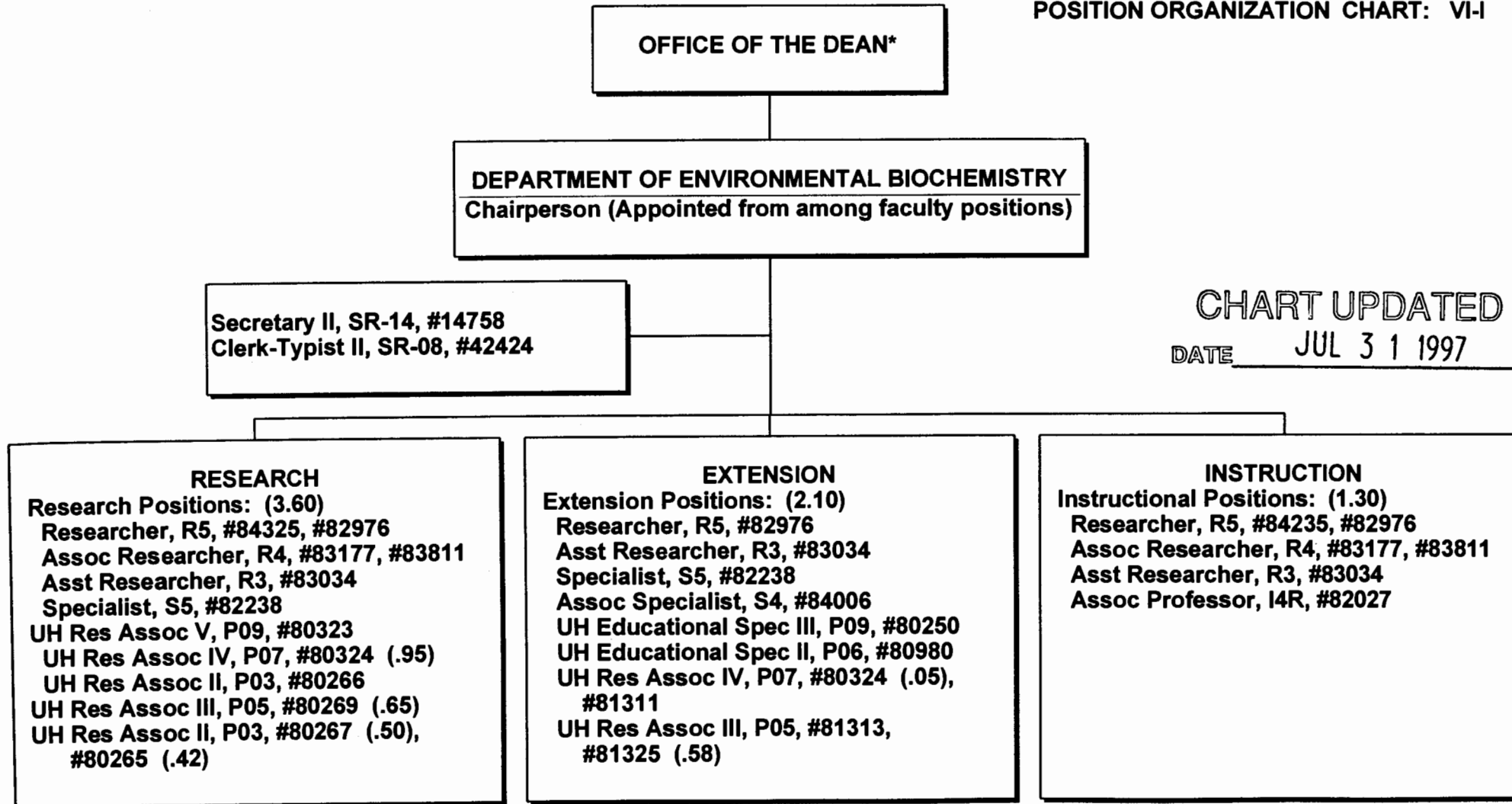


CHART UPDATED  
DATE JUL 3 1 1997

\*& Director of Cooperative Science & Education

STATE OF HAWAII  
UNIVERSITY OF HAWAII  
UNIVERSITY OF HAWAII AT MANOA  
COLLEGE OF TROPICAL AGRICULTURE AND HUMAN RESOURCES

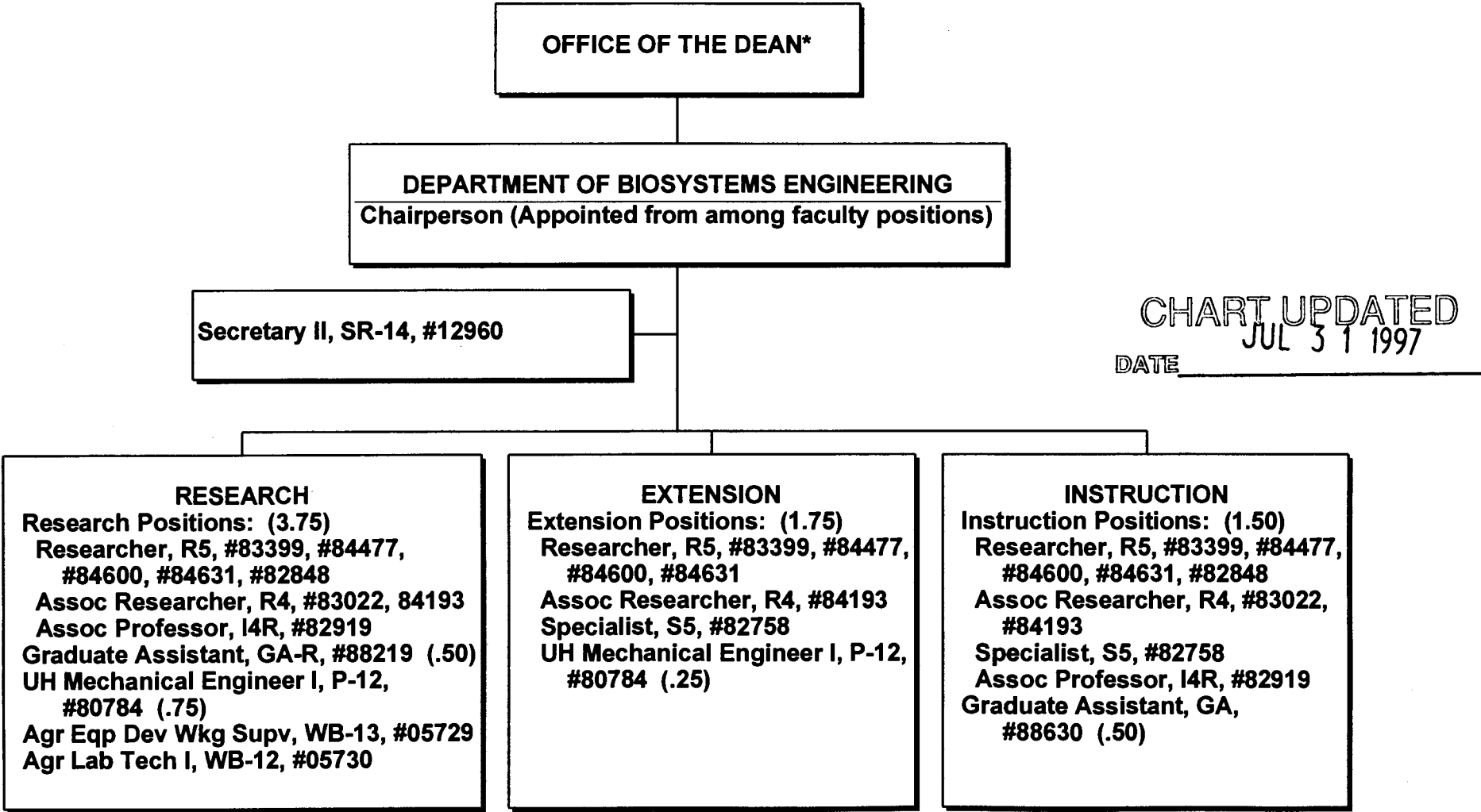
DEPARTMENT OF ENVIRONMENTAL BIOCHEMISTRY  
POSITION ORGANIZATION CHART: VI-I



\* & Director of Cooperative Science & Education

STATE OF HAWAII  
UNIVERSITY OF HAWAII  
UNIVERSITY OF HAWAII AT MANOA  
COLLEGE OF TROPICAL AGRICULTURE AND HUMAN RESOURCES

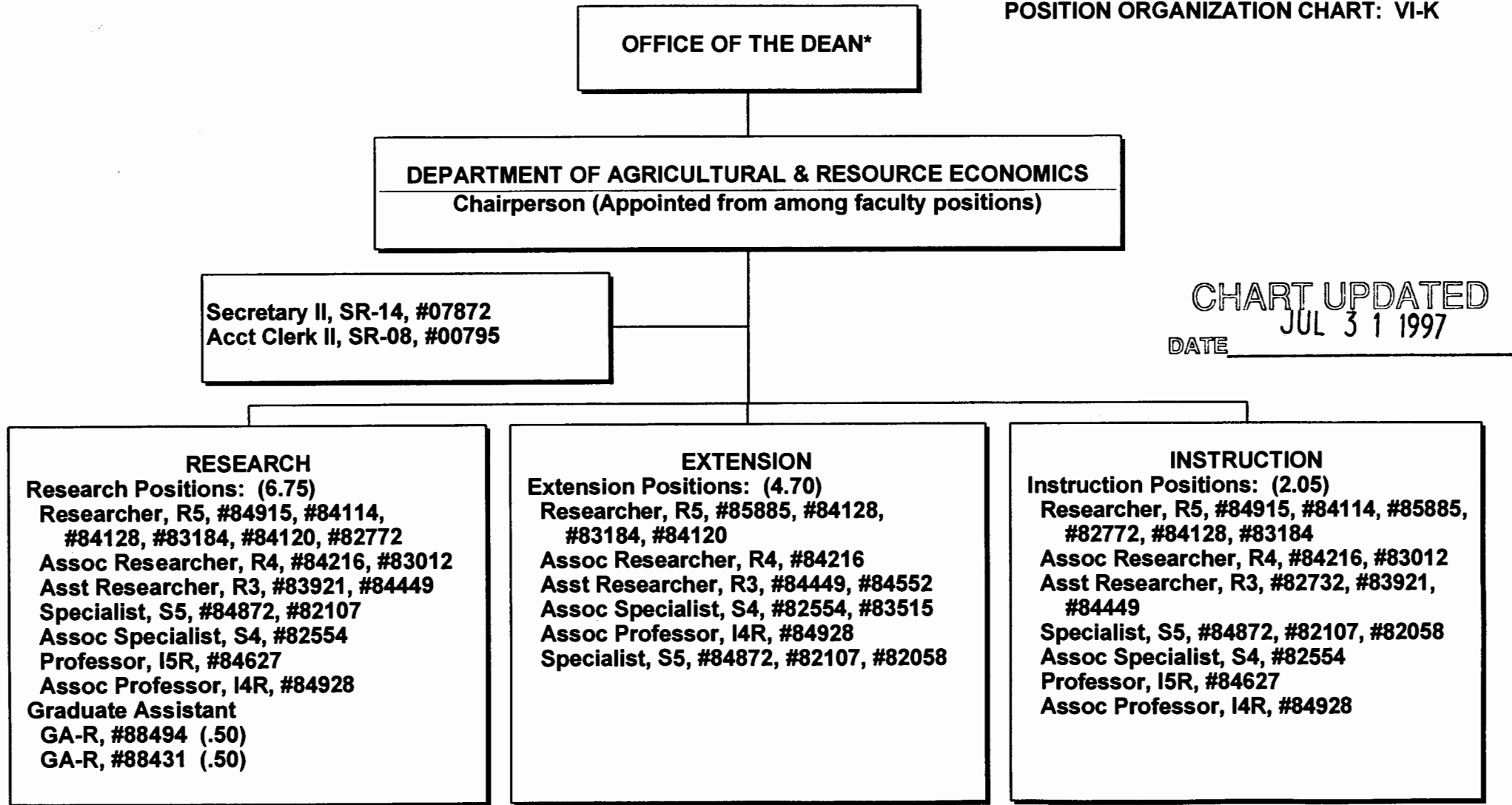
DEPARTMENT OF BIOSYSTEMS ENGINEERING  
POSITION ORGANIZATION CHART: VI-J



\* & Director of Cooperative Science & Education

STATE OF HAWAII  
UNIVERSITY OF HAWAII  
UNIVERSITY OF HAWAII AT MANOA  
COLLEGE OF TROPICAL AGRICULTURE AND HUMAN RESOURCES

DEPARTMENT OF AGRICULTURAL & RESOURCE ECONOMICS  
POSITION ORGANIZATION CHART: VI-K



\* & Director of Cooperative Science & Education

STATE OF HAWAII  
UNIVERSITY OF HAWAII  
UNIVERSITY OF HAWAII AT MANOA  
COLLEGE OF TROPICAL AGRICULTURE AND HUMAN RESOURCES

DEPARTMENT OF AGRONOMY & SOIL SCIENCE  
POSITION ORGANIZATION CHART: VI-L

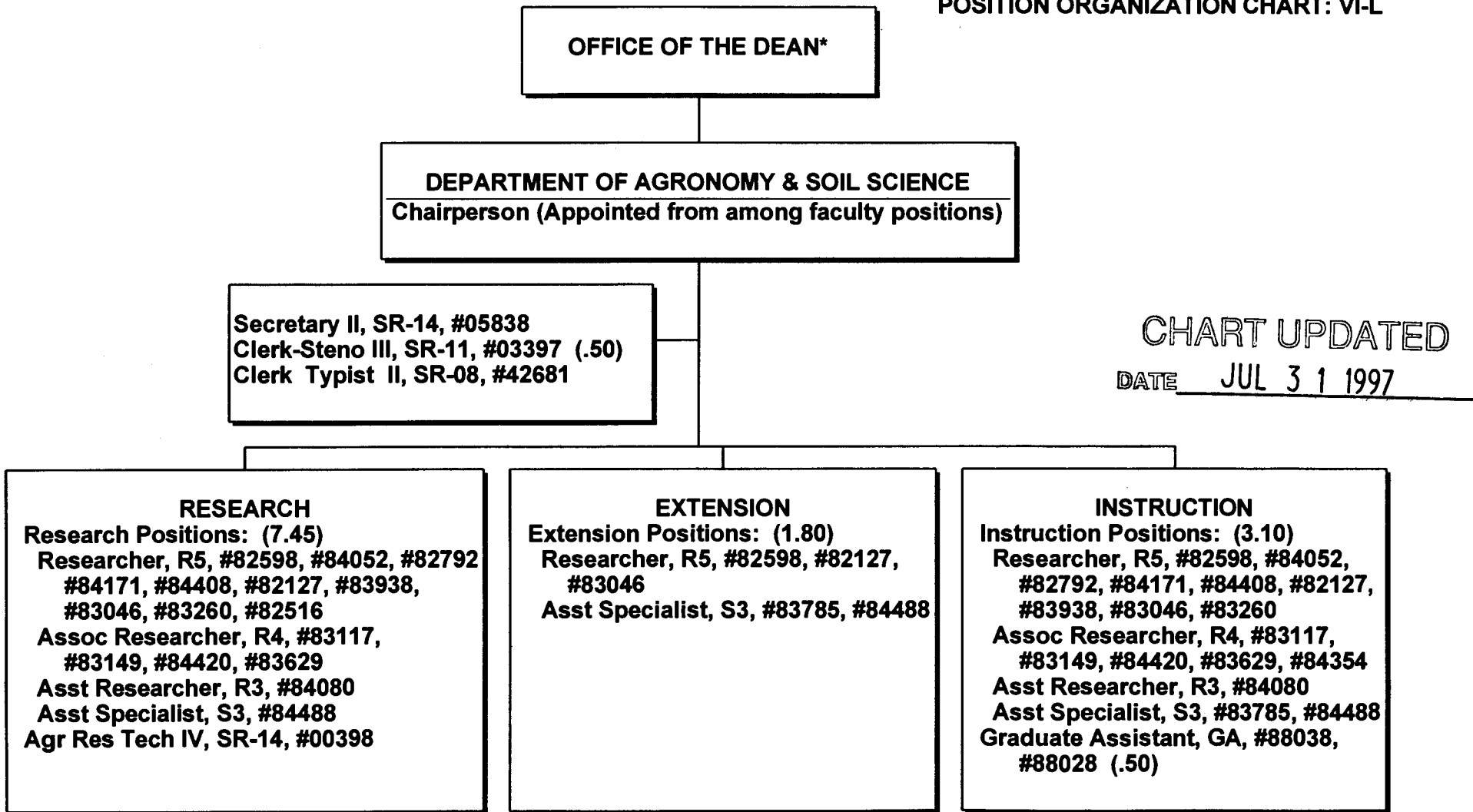
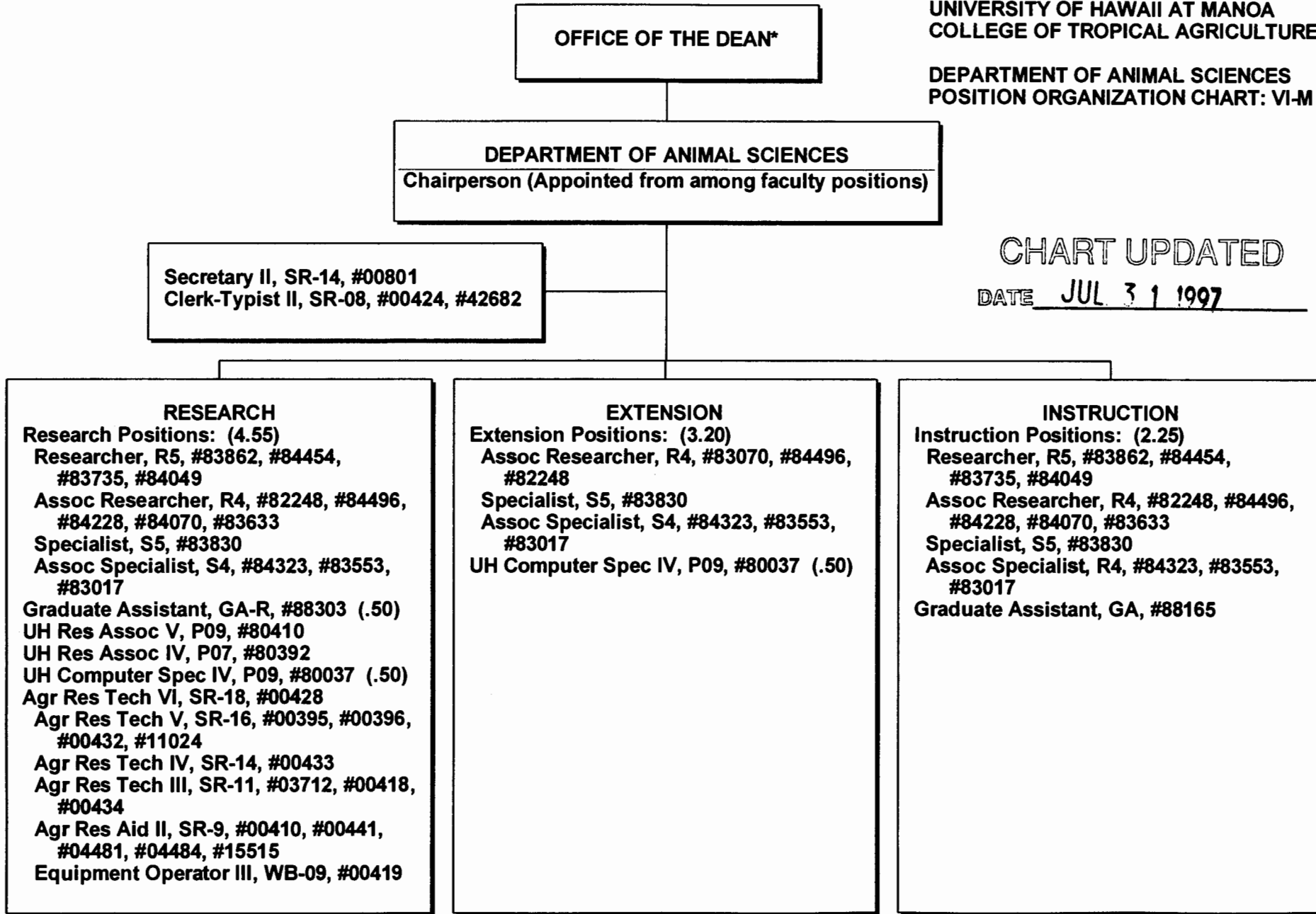


CHART UPDATED  
DATE JUL 3 1 1997

\* & Director of Cooperative Science & Education

STATE OF HAWAII  
UNIVERSITY OF HAWAII  
UNIVERSITY OF HAWAII AT MANOA  
COLLEGE OF TROPICAL AGRICULTURE AND HUMAN RESOURCES

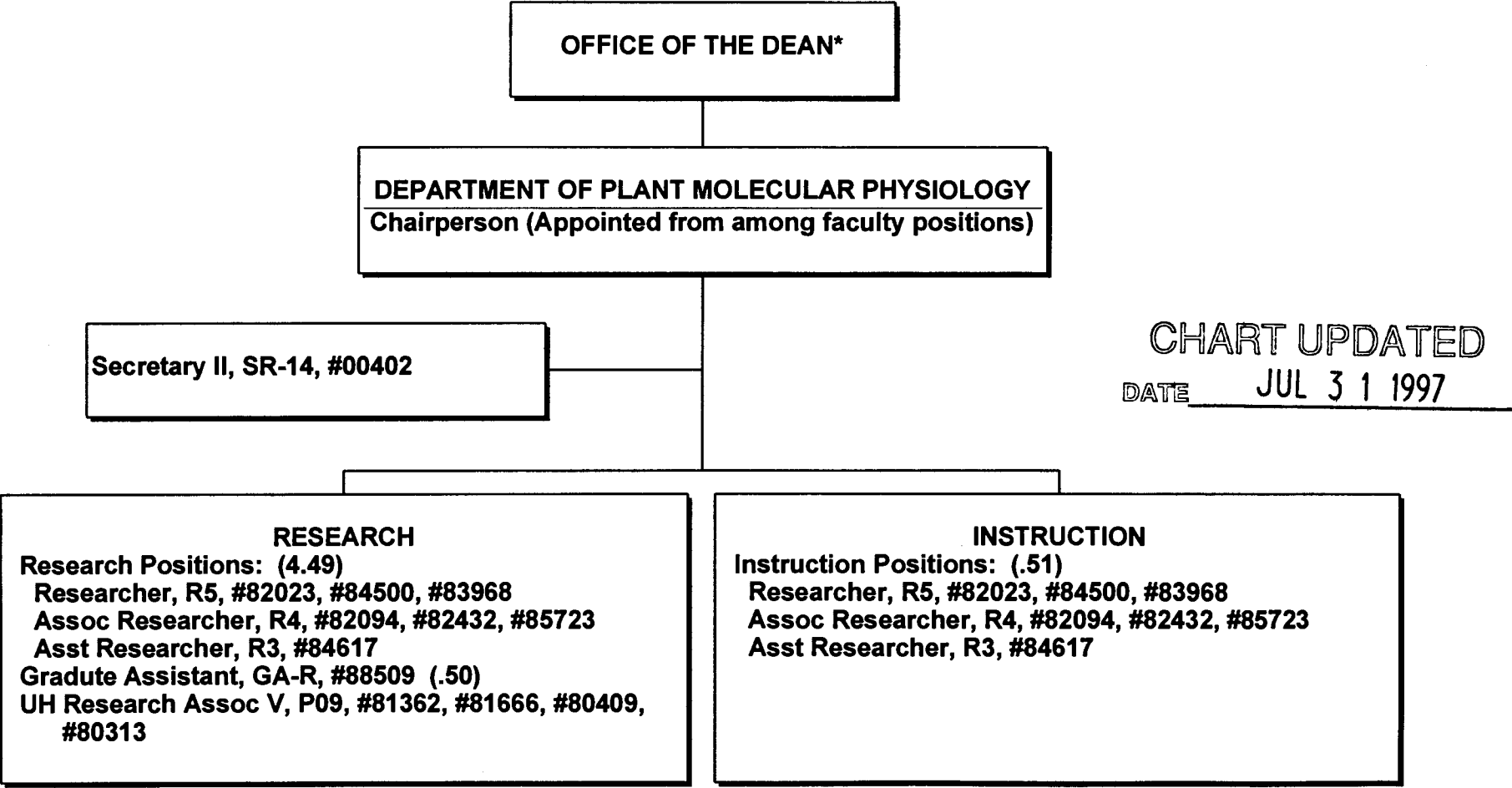
DEPARTMENT OF ANIMAL SCIENCES  
POSITION ORGANIZATION CHART: VI-M



\* & Director of Cooperative Science & Education

STATE OF HAWAII  
UNIVERSITY OF HAWAII  
UNIVERSITY OF HAWAII AT MANOA  
COLLEGE OF TROPICAL AGRICULTURE AND HUMAN RESOURCES

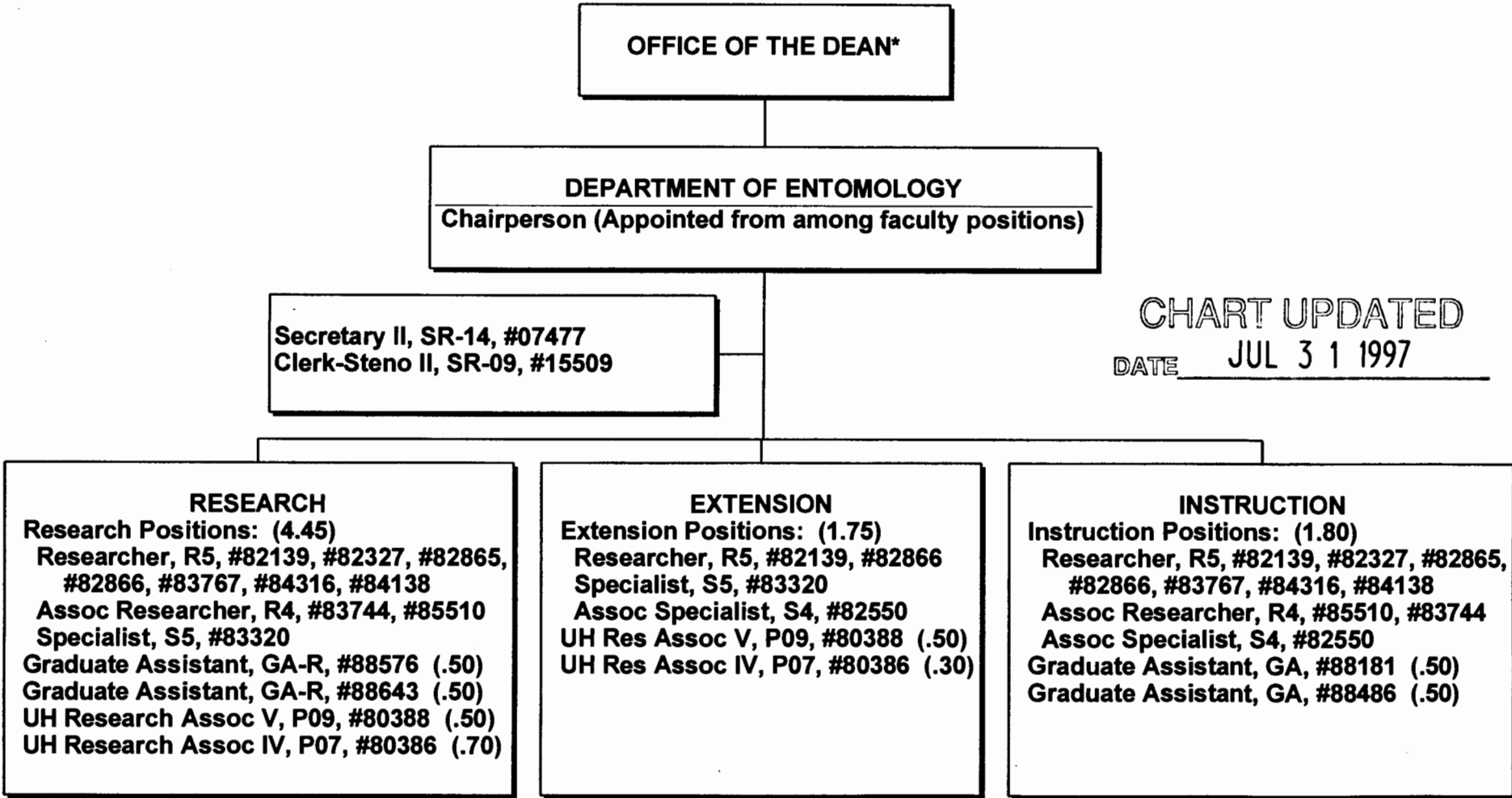
DEPARTMENT OF PLANT MOLECULAR PHYSIOLOGY  
POSITION ORGANIZATION CHART: VI-N



\* & Director of Cooperative Science & Education

STATE OF HAWAII  
UNIVERSITY OF HAWAII  
UNIVERSITY OF HAWAII AT MANOA  
COLLEGE OF TROPICAL AGRICULTURE AND HUMAN RESOURCES

DEPARTMENT OF ENTOMOLOGY  
POSITION ORGANIZATION CHART: VI-O



\* & Director of Cooperative Science & Education



STATE OF HAWAII  
UNIVERSITY OF HAWAII  
UNIVERSITY OF HAWAII AT MANOA  
COLLEGE OF TROPICAL AGRICULTURE AND HUMAN RESOURCES

DEPARTMENT OF FOOD SCIENCE AND HUMAN NUTRITION  
POSITION ORGANIZATION CHART: VI-P

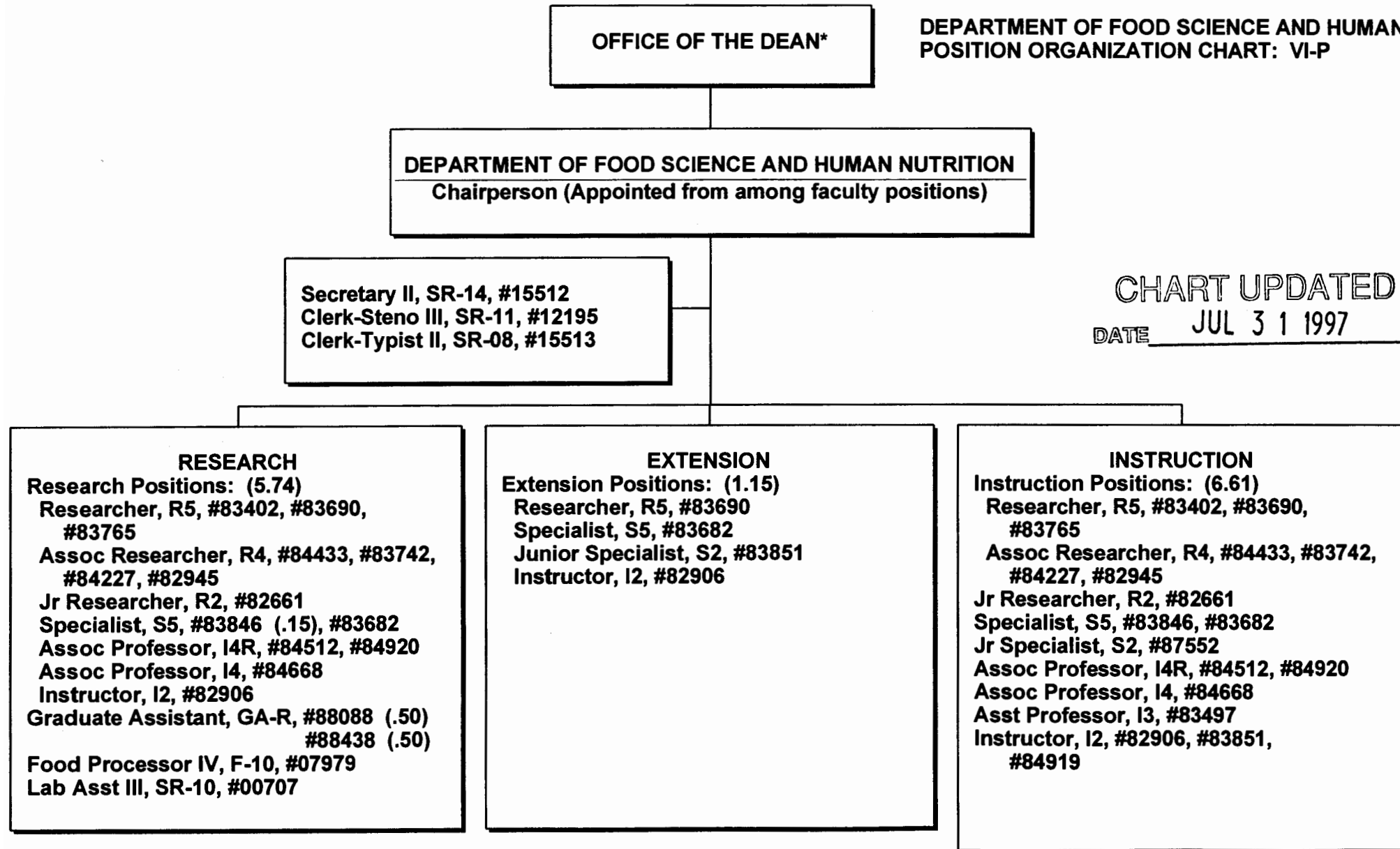


CHART UPDATED  
DATE JUL 3 1 1997

\* & Director of Cooperative Science & Education

STATE OF HAWAII  
UNIVERSITY OF HAWAII  
UNIVERSITY OF HAWAII AT MANOA  
COLLEGE OF TROPICAL AGRICULTURE AND HUMAN RESOURCES

DEPARTMENT OF HORTICULTURE  
POSITION ORGANIZATION CHART: VI-Q

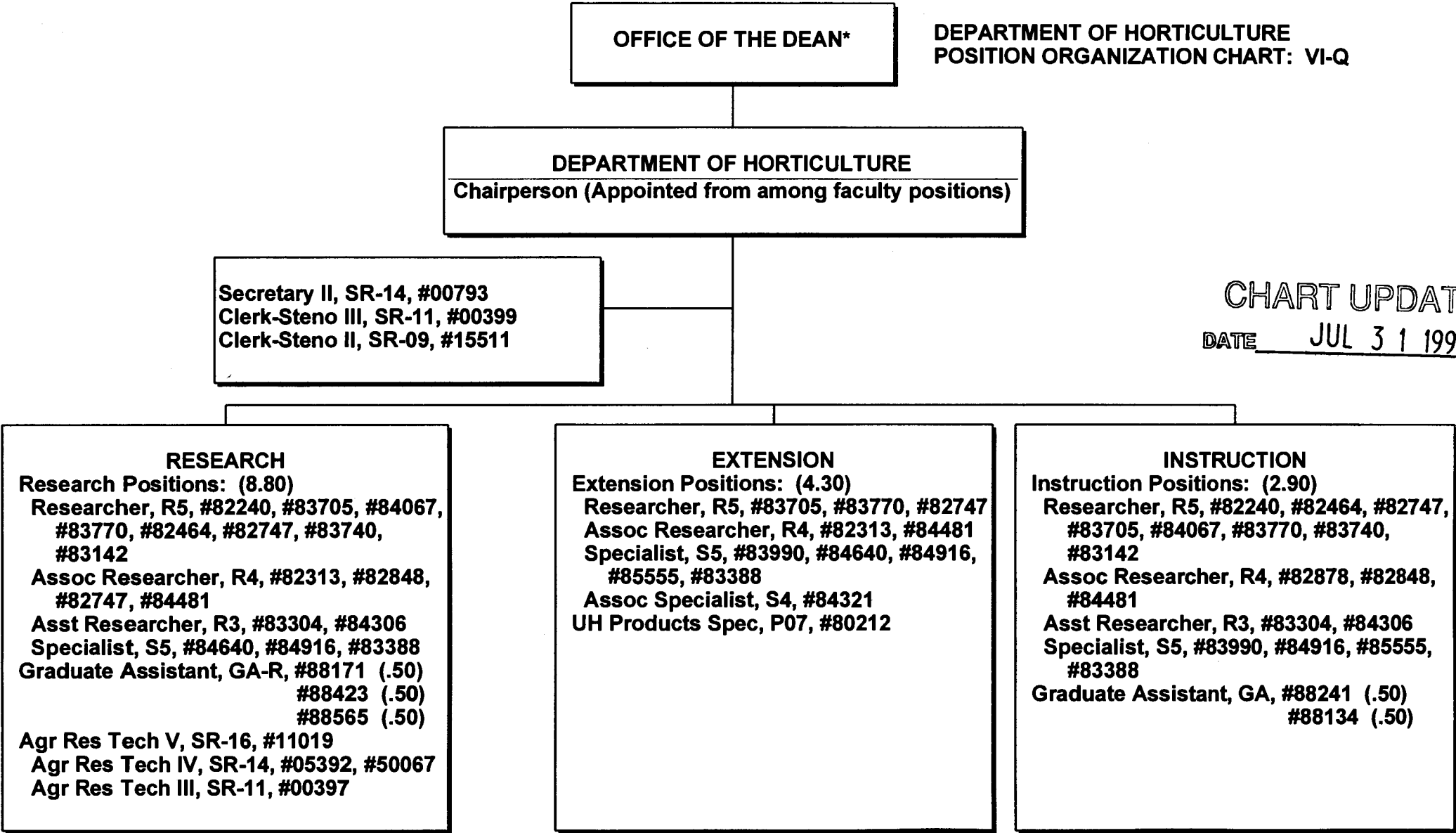
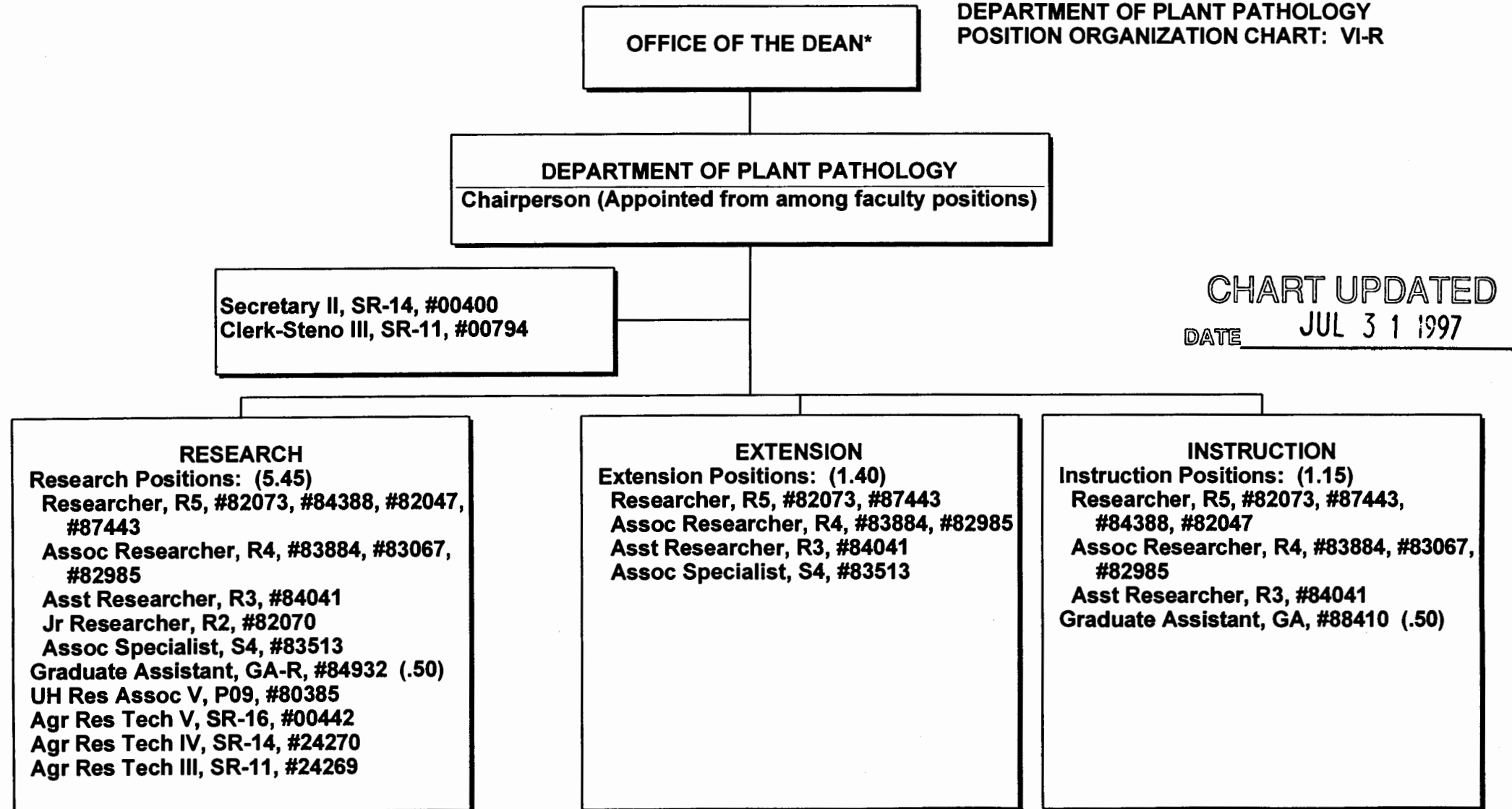


CHART UPDATED  
DATE JUL 31 1997

\* & Director of Cooperative Science & Education

STATE OF HAWAII  
UNIVERSITY OF HAWAII  
UNIVERSITY OF HAWAII AT MANOA  
COLLEGE OF TROPICAL AGRICULTURE AND HUMAN RESOURCES

DEPARTMENT OF PLANT PATHOLOGY  
POSITION ORGANIZATION CHART: VI-R



\* & Director of Cooperative Science & Education

STATE OF HAWAII  
UNIVERSITY OF HAWAII  
UNIVERSITY OF HAWAII AT MANOA  
COLLEGE OF TROPICAL AGRICULTURE AND HUMAN RESOURCES

DEPARTMENT OF HUMAN RESOURCES  
POSITION ORGANIZATION CHART: VI-S

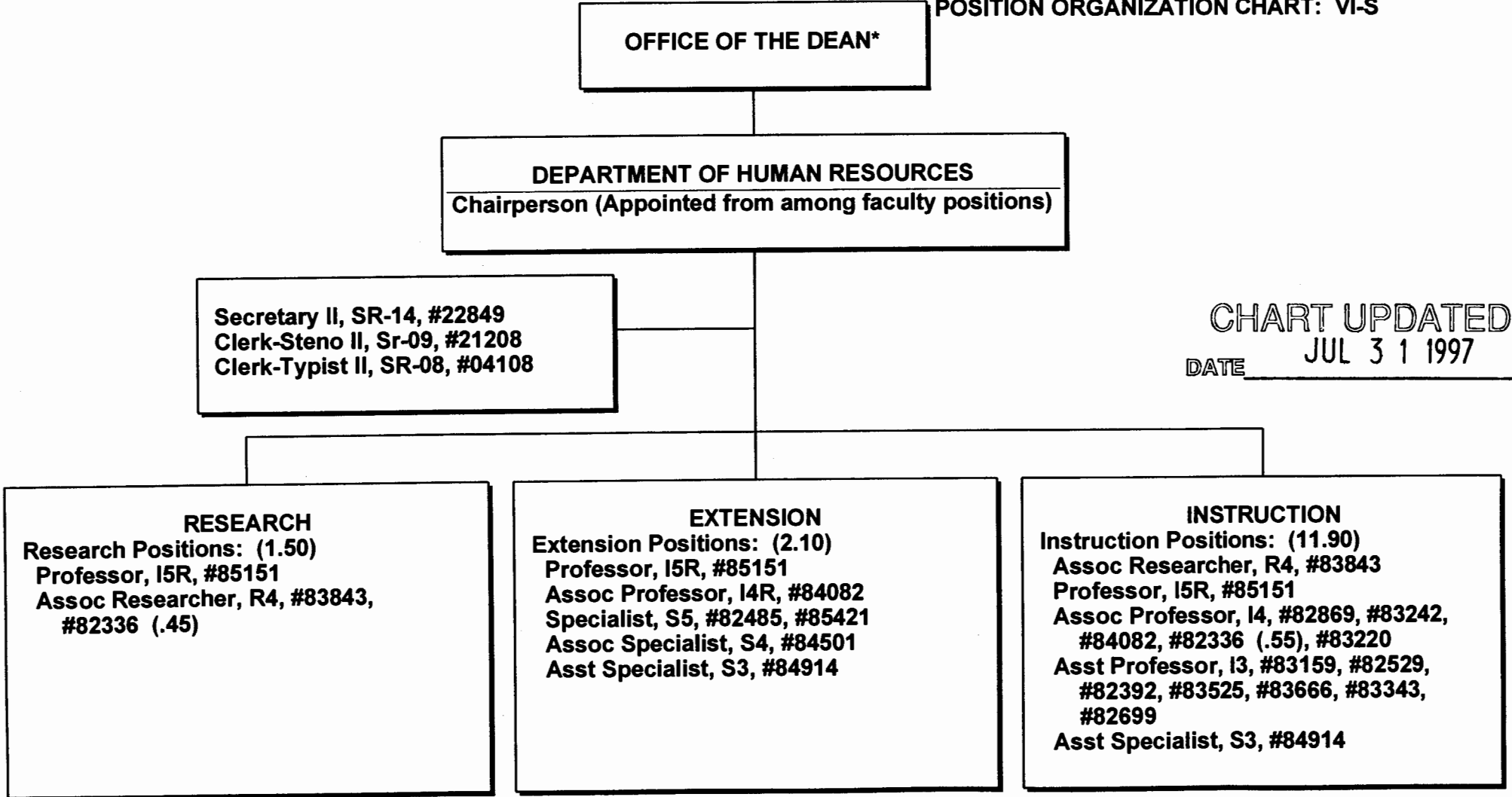


CHART UPDATED  
DATE JUL 3 1 1997

\* & Director of Cooperative Science & Education

STATE OF HAWAII  
UNIVERSITY OF HAWAII  
UNIVERSITY OF HAWAII AT MANOA  
COLLEGE OF TROPICAL AGRICULTURE AND HUMAN RESOURCES

OFFICE OF THE DIRECTOR, HITAHR  
POSITION ORGANIZATION CHART: VI-T

OFFICE OF THE DEAN\*

OFFICE OF THE DIRECTOR  
HAWAII INSTITUTE OF TROPICAL AGRICULTURE & HUMAN RESOURCES

Director, HITAHR, M11-A, #89124  
Secretary III, SR-16, #00425  
Clerk-Steno III, SR-11, #03397 (.50)  
Clerk-Typist II, SR-08, #42680  
Asst Dir, HITAHR, (Agriculture & Applied Behavioral Sciences  
Research), M05-A, #89186  
Secretary II, SR-14, #22831  
Asst Dir, HITAHR, (Agriculture & Resource Development),  
M05-A, #89017  
Secretary II, SR-14, #22932  
Asst Dir, HITAHR, (Cooperative Extension & County Programs),  
M05-A, #89069  
Asst Extension Agent, A-3, #85476  
Clerk-Typist II, SR-08, #17592  
Secretary II, SR-14, #00789

CHART UPDATED  
DATE JUL 3 1 1997

\* & Director of Cooperative Science & Education

STATE OF HAWAII  
UNIVERSITY OF HAWAII  
UNIVERSITY OF HAWAII AT MANOA  
COLLEGE OF TROPICAL AGRICULTURE AND HUMAN RESOURCES

AGRICULTURAL DIAGNOSTIC SERVICE CENTER  
POSITION ORGANIZATION CHART: VI-U

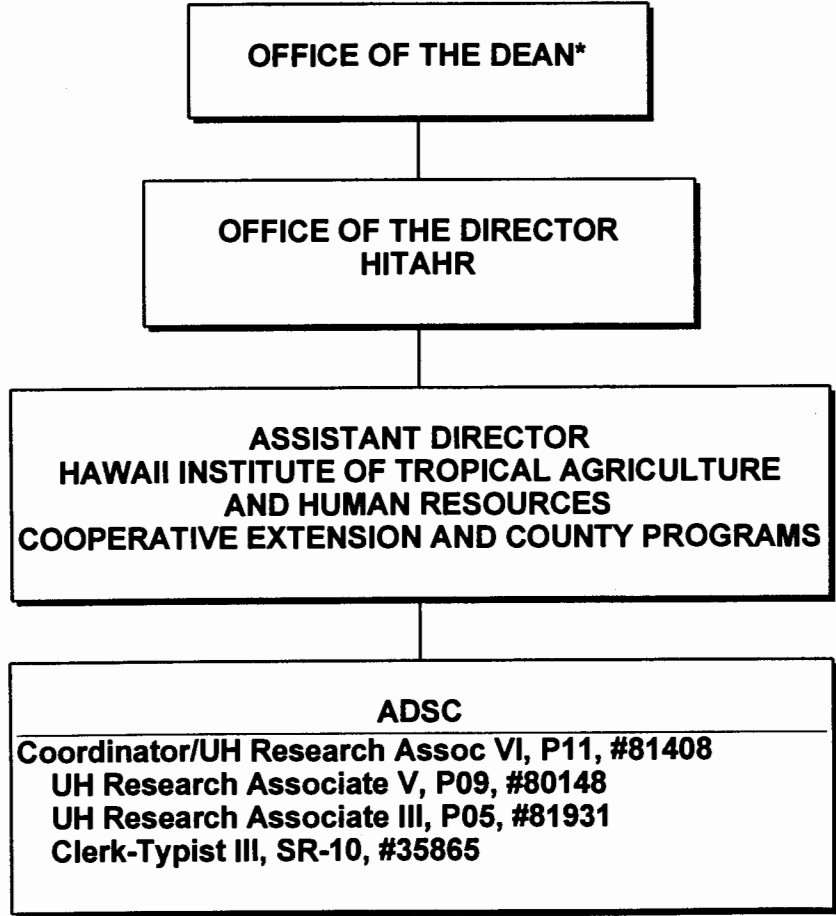


CHART UPDATED  
DATE JUL 31 1997

\* & Director of Cooperative Science & Education

STATE OF HAWAII  
UNIVERSITY OF HAWAII  
UNIVERSITY OF HAWAII AT MANOA  
COLLEGE OF TROPICAL AGRICULTURE AND HUMAN RESOURCES

4-H OFFICE  
POSITION ORGANIZATION CHART: VI-V

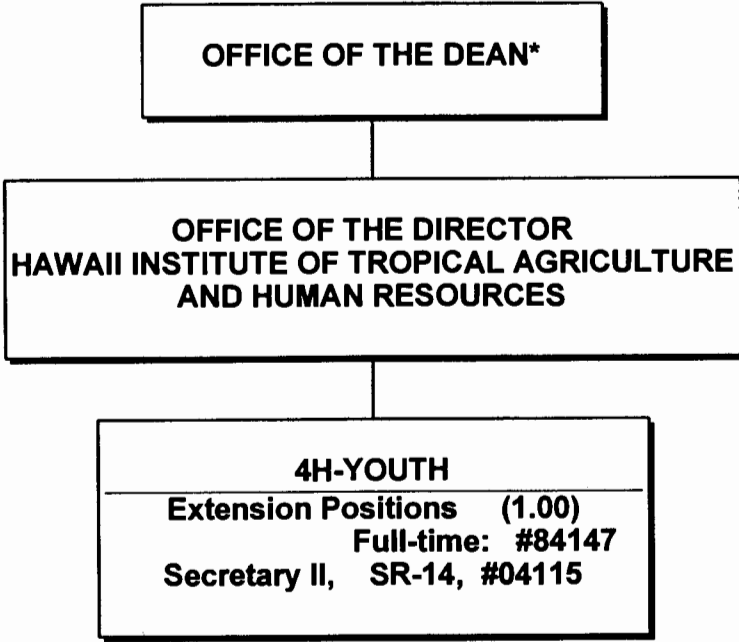


CHART UPDATED  
JUL 31 1997  
DATE \_\_\_\_\_

\* & Director of Cooperative Science & Education

STATE OF HAWAII  
UNIVERSITY OF HAWAII  
UNIVERSITY OF HAWAII AT MANOA  
COLLEGE OF TROPICAL AGRICULTURE AND HUMAN RESOURCES

COMMUNITY RESOURCE DEVELOPMENT  
POSITION ORGANIZATION CHART: VI-W

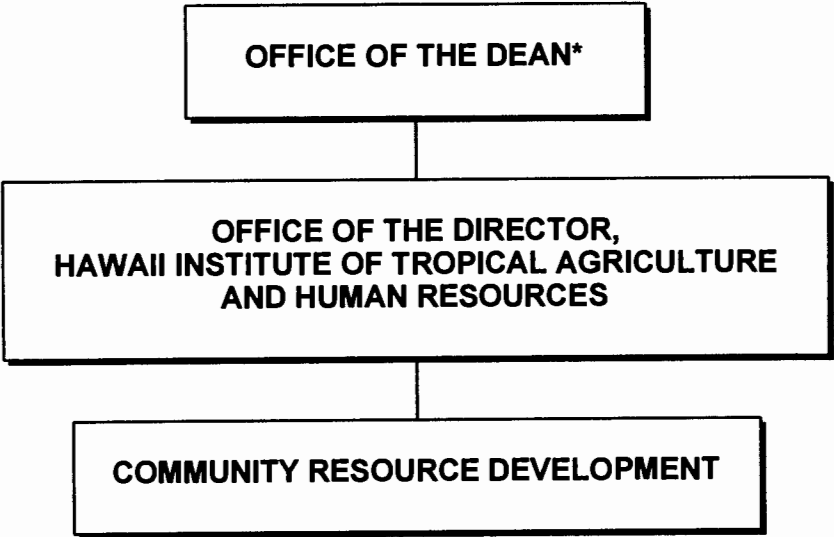


CHART UPDATED  
DATE JUL 31 1997

\* & Director of Cooperative Science & Education



STATE OF HAWAII  
UNIVERSITY OF HAWAII  
UNIVERSITY OF HAWAII AT MANOA  
COLLEGE OF TROPICAL AGRICULTURE AND HUMAN RESOURCES

HAWAII INSTITUTE OF TROPICAL AGRICULTURE & HUMAN  
RESOURCES  
COUNTY ADMINISTRATION  
POSITION ORGANIZATION CHART: VI-X

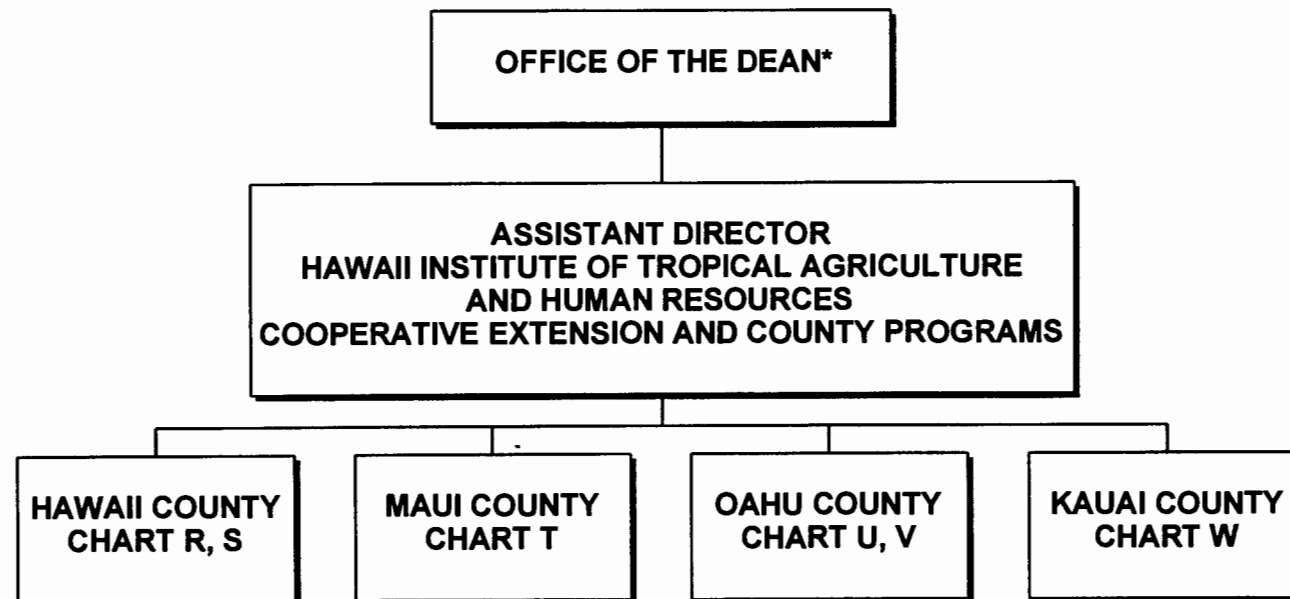


CHART UPDATED  
DATE JUL 31 1997

\*& Director of Cooperative Science & Education

STATE OF HAWAII  
UNIVERSITY OF HAWAII  
UNIVERSITY OF HAWAII AT MANOA  
COLLEGE OF TROPICAL AGRICULTURE AND HUMAN RESOURCES

HAWAII INSTITUTE OF TROPICAL AGRICULTURE  
AND HUMAN RESOURCES  
HAWAII COUNTY  
POSITION ORGANIZATION CHART: VI-Y

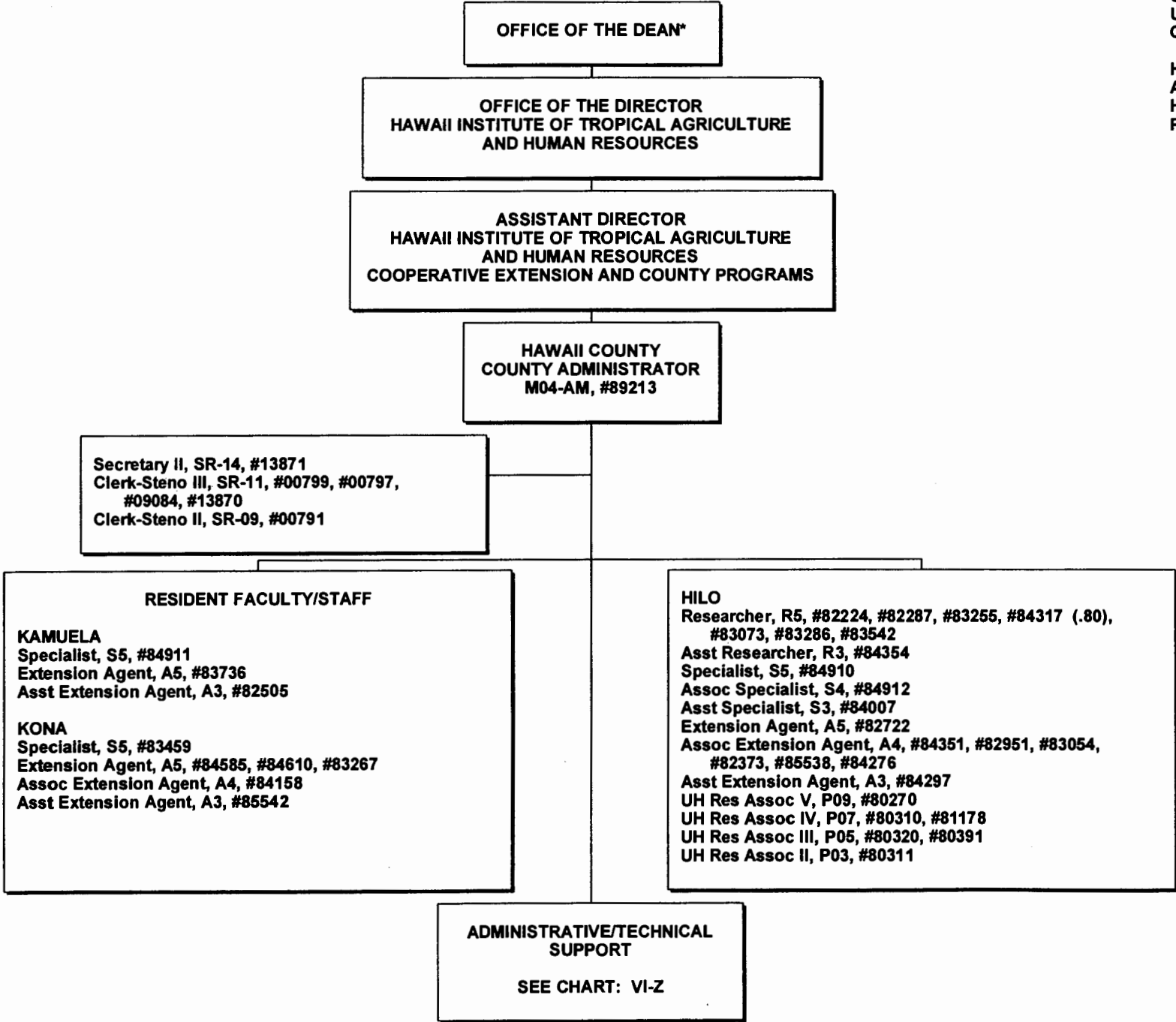
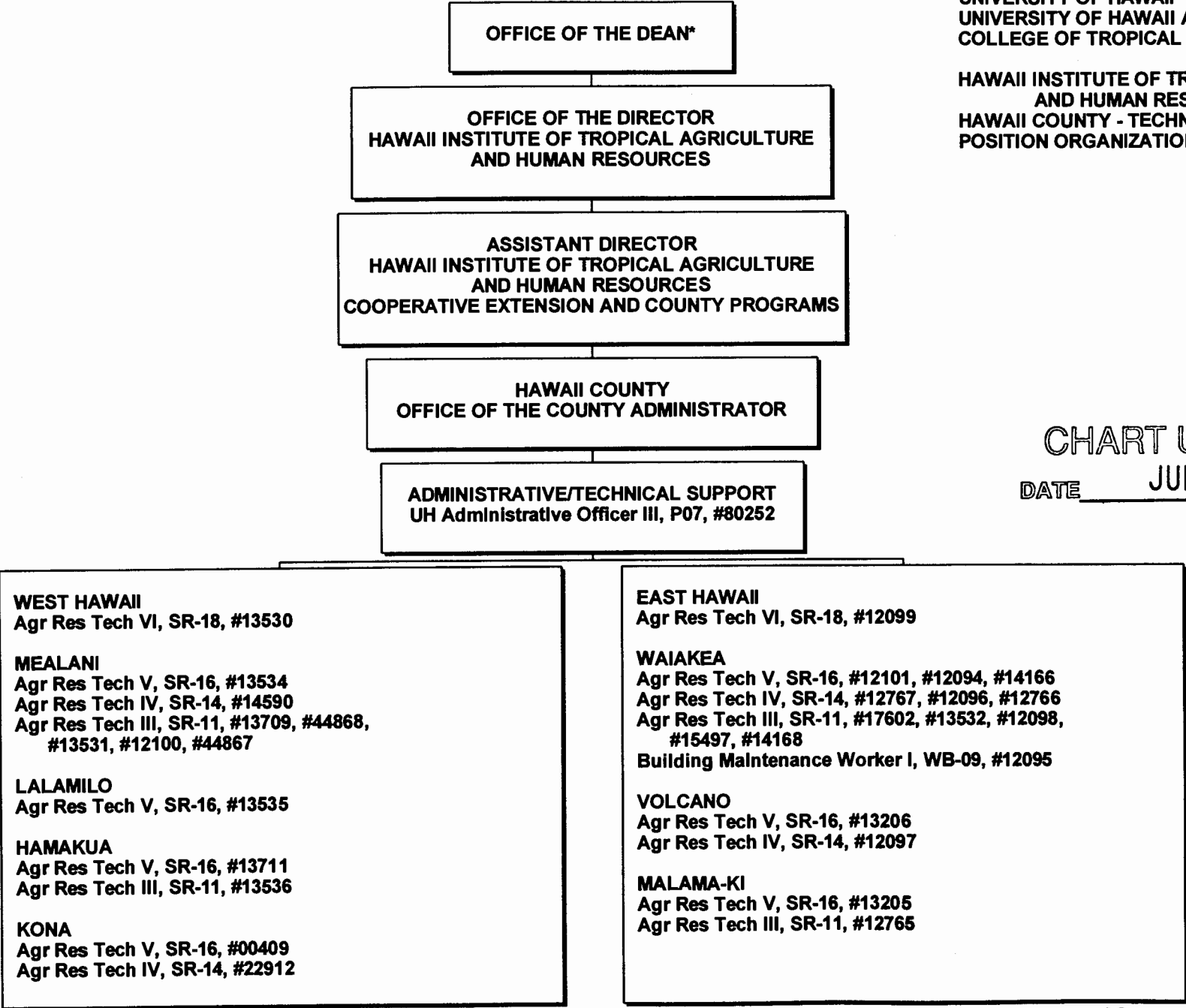


CHART UPDATED  
JUL 3 1 1997  
DATE \_\_\_\_\_

\*& Director of Cooperative Science & Education



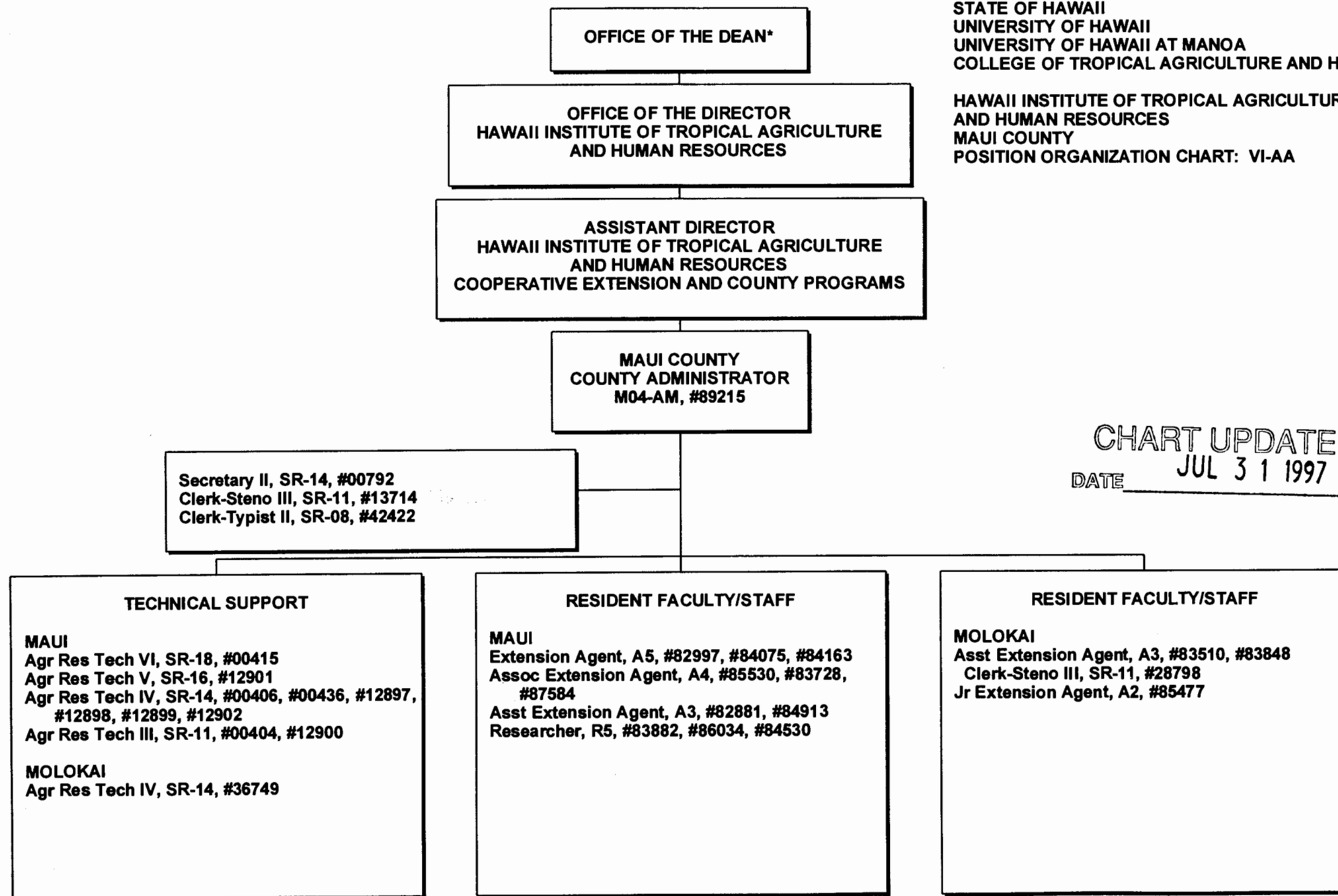
STATE OF HAWAII  
UNIVERSITY OF HAWAII  
UNIVERSITY OF HAWAII AT MANOA  
COLLEGE OF TROPICAL AGRICULTURE AND HUMAN RESOURCES

HAWAII INSTITUTE OF TROPICAL AGRICULTURE  
AND HUMAN RESOURCES  
HAWAII COUNTY - TECHNICAL SUPPORT  
POSITION ORGANIZATION CHART: VI-Z

CHART UPDATED

DATE JUL 3 1 1997

\* & Director of Cooperative Science & Education



STATE OF HAWAII  
UNIVERSITY OF HAWAII  
UNIVERSITY OF HAWAII AT MANOA  
COLLEGE OF TROPICAL AGRICULTURE AND HUMAN RESOURCES

HAWAII INSTITUTE OF TROPICAL AGRICULTURE  
AND HUMAN RESOURCES  
MAUI COUNTY  
POSITION ORGANIZATION CHART: VI-AA

CHART UPDATED  
DATE JUL 31 1997

\*8 Director of Cooperative Science & Education

STATE OF HAWAII  
UNIVERSITY OF HAWAII  
UNIVERSITY OF HAWAII AT MANOA  
COLLEGE OF TROPICAL AGRICULTURE AND HUMAN RESOURCES  
  
HAWAII INSTITUTE OF TROPICAL AGRICULTURE  
AND HUMAN RESOURCES  
OAHU COUNTY  
POSITION ORGANIZATION CHART: VI-BB

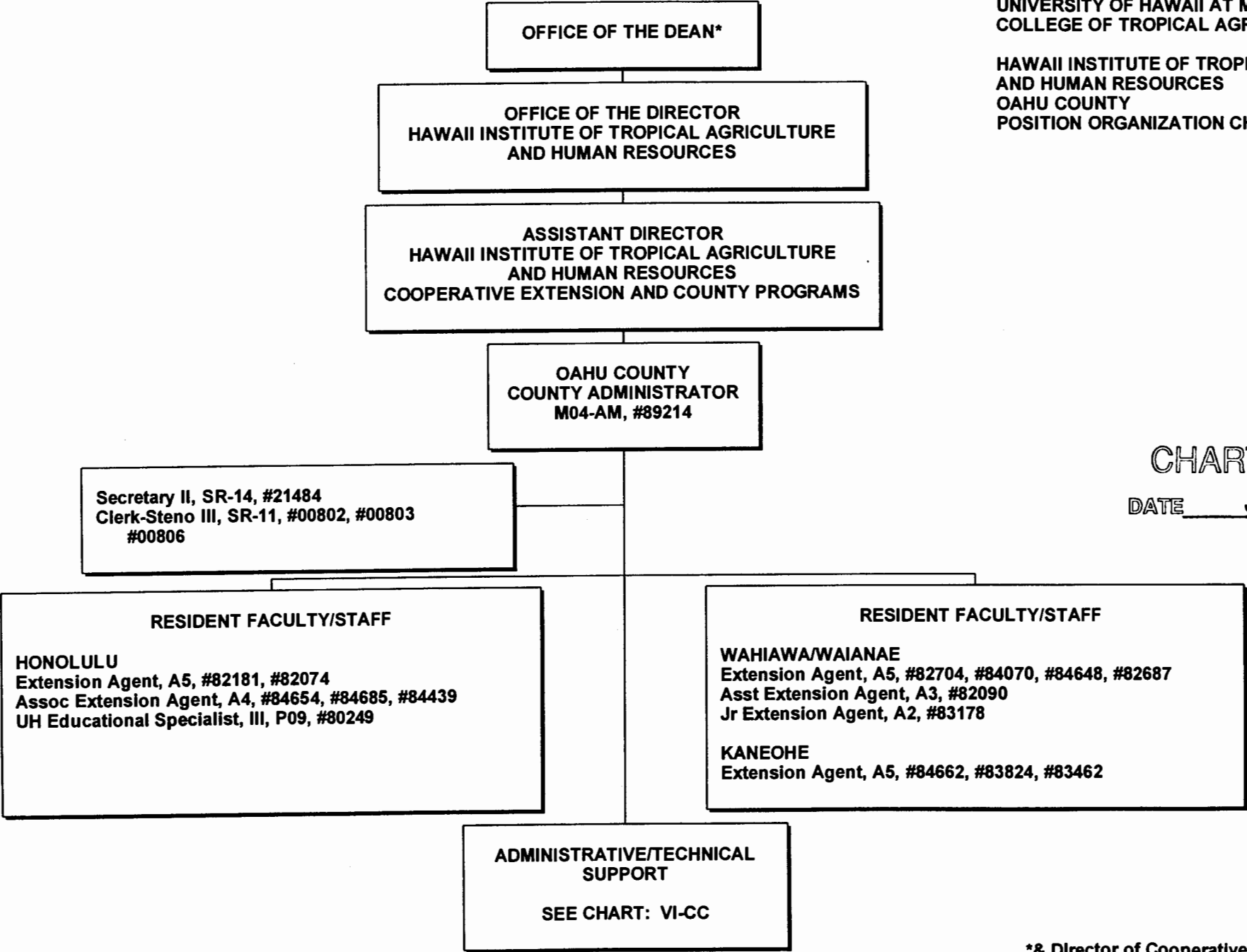
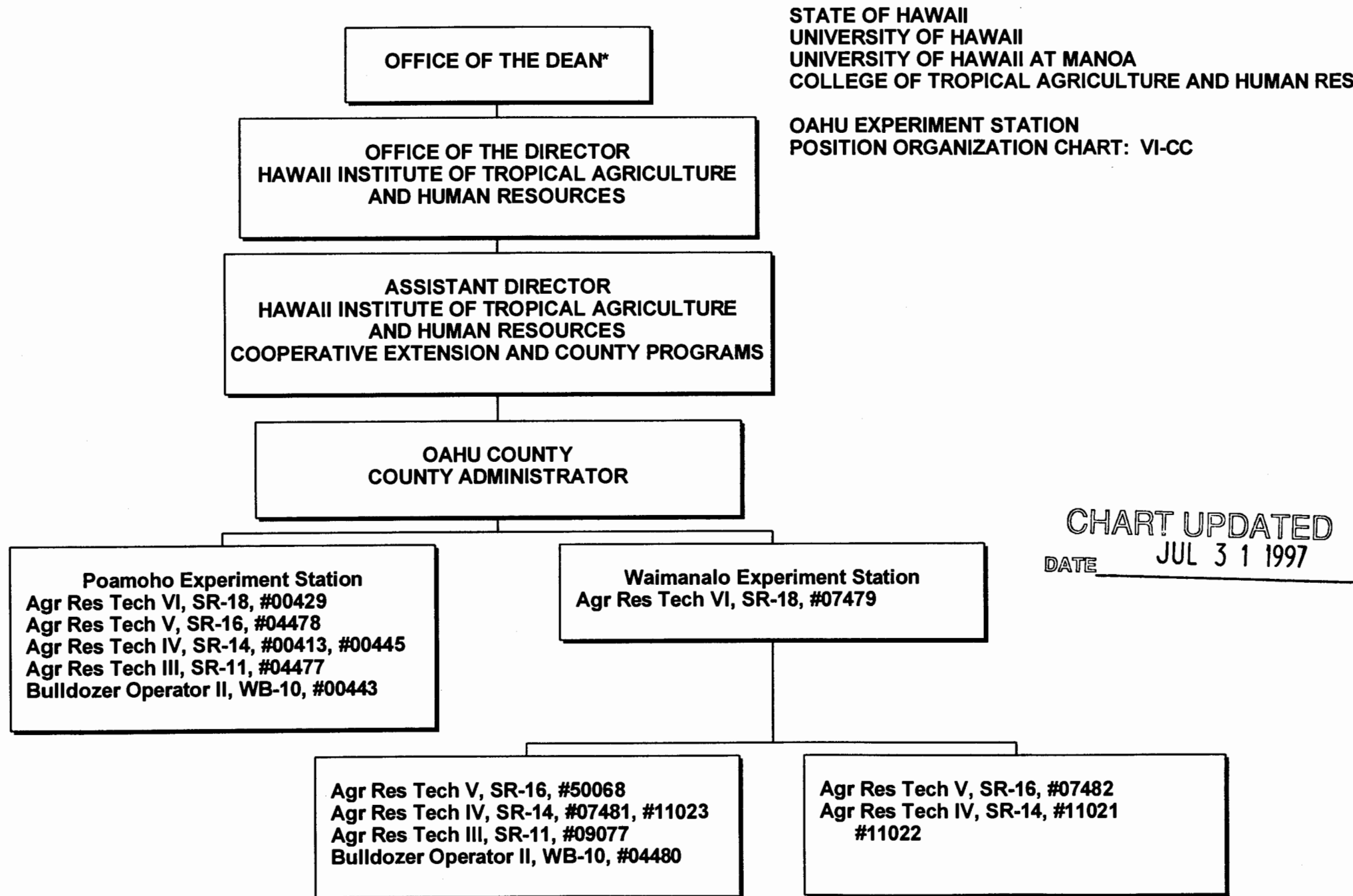


CHART UPDATED  
DATE JUL 31 1997

\* & Director of Cooperative Science & Education



\* & Director of Cooperative Science & Education

OFFICE OF THE DEAN\*

STATE OF HAWAII  
UNIVERSITY OF HAWAII  
UNIVERSITY OF HAWAII AT MANOA  
COLLEGE OF TROPICAL AGRICULTURE AND HUMAN RESOURCES

OFFICE OF THE DIRECTOR  
HAWAII INSTITUTE OF TROPICAL AGRICULTURE  
AND HUMAN RESOURCES

HAWAII INSTITUTE OF TROPICAL AGRICULTURE  
AND HUMAN RESOURCES  
KAUAI COUNTY  
POSITION ORGANIZATION CHART: VI-DD

ASSISTANT DIRECTOR  
HAWAII INSTITUTE OF TROPICAL AGRICULTURE  
AND HUMAN RESOURCES  
COOPERATIVE EXTENSION AND COUNTY PROGRAMS

KAUAI COUNTY  
COUNTY ADMINISTRATOR  
M04-AM, #89216

Secretary II, SR-14, #04003  
Clerk-Steno III, SR-11, #13872

CHART UPDATED  
DATE JUL 3 1 1997

TECHNICAL SUPPORT

Agr Res Tech VI, SR-18, #12753  
Agr Res Tech IV, SR-14, #12102, #12758  
Agr Res Tech III, SR-11, #12760, #12761, #14344

RESIDENT FACULTY/STAFF

Researcher, R5, #82516  
Assoc Researcher, R4, #83840, #84120, #85505  
Assoc Extension Agent, A4, #82196  
Asst Extension Agent, A3, #82175, #83816,  
#85526  
Jr. Extension Agent, A2, #82363

\* & Director of Cooperative Science & Education