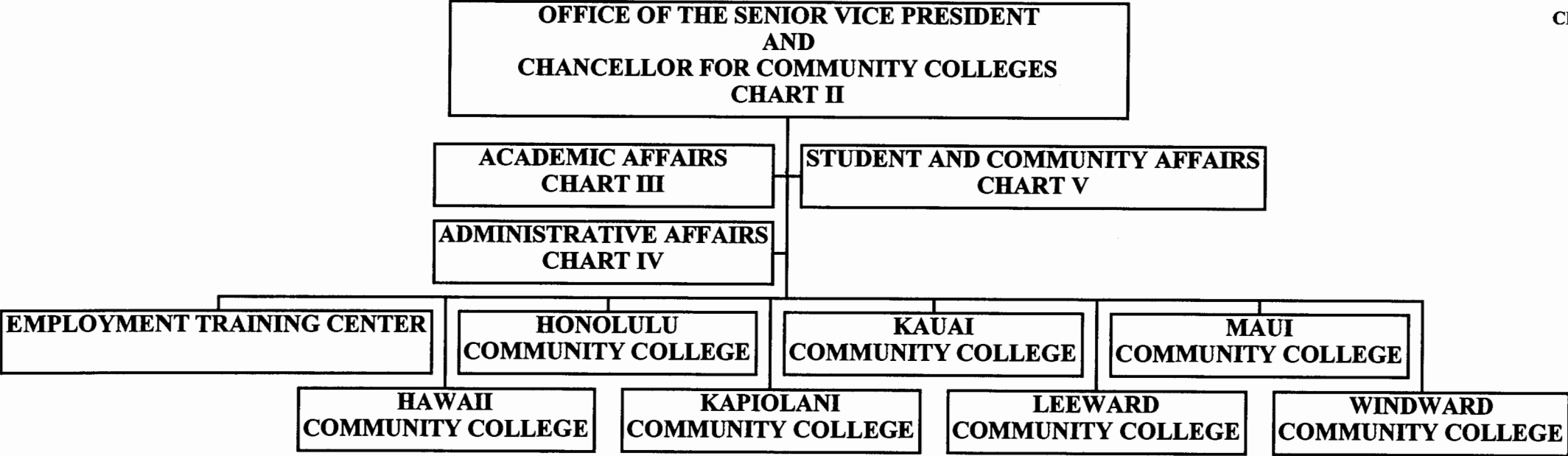


STATE OF HAWAII
UNIVERSITY OF HAWAII
COMMUNITY COLLEGES
OFFICE OF THE SENIOR VICE PRESIDENT
AND
CHANCELLOR FOR COMMUNITY COLLEGES

ORGANIZATION CHART

CHART I



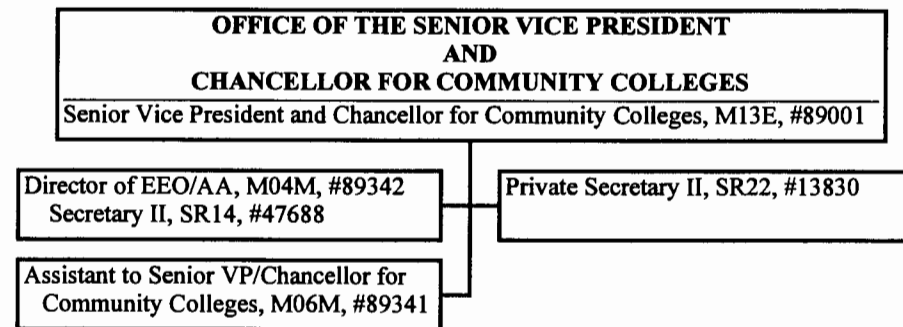
Perm
General Fund 38.25
(N) Federal Funds 1.25

CHART UPDATED
DATE JUL - 1 1998

STATE OF HAWAII
UNIVERSITY OF HAWAII
COMMUNITY COLLEGES
OFFICE OF THE SENIOR VICE PRESIDENT
AND
CHANCELLOR FOR COMMUNITY COLLEGES

POSITION ORGANIZATION CHART

CHART II



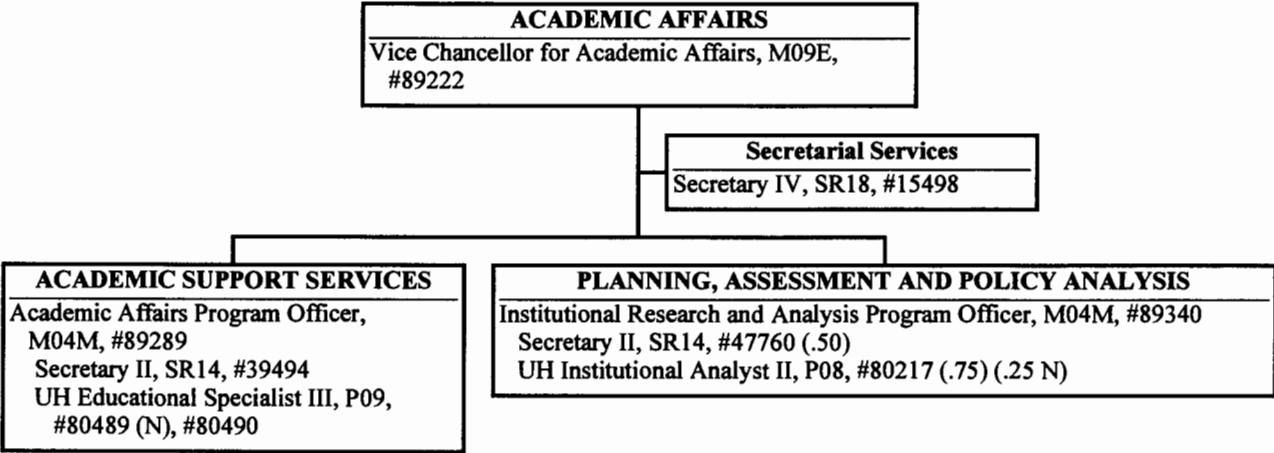
General Fund Perm 5.00

CHART UPDATED
DATE JUL - 1 1998

STATE OF HAWAII
UNIVERSITY OF HAWAII
COMMUNITY COLLEGES
OFFICE OF THE SENIOR VICE PRESIDENT
AND
CHANCELLOR FOR COMMUNITY COLLEGES

POSITION ORGANIZATION CHART

CHART III



Perm
General Fund 7.25
(N) Federal Funds 1.25

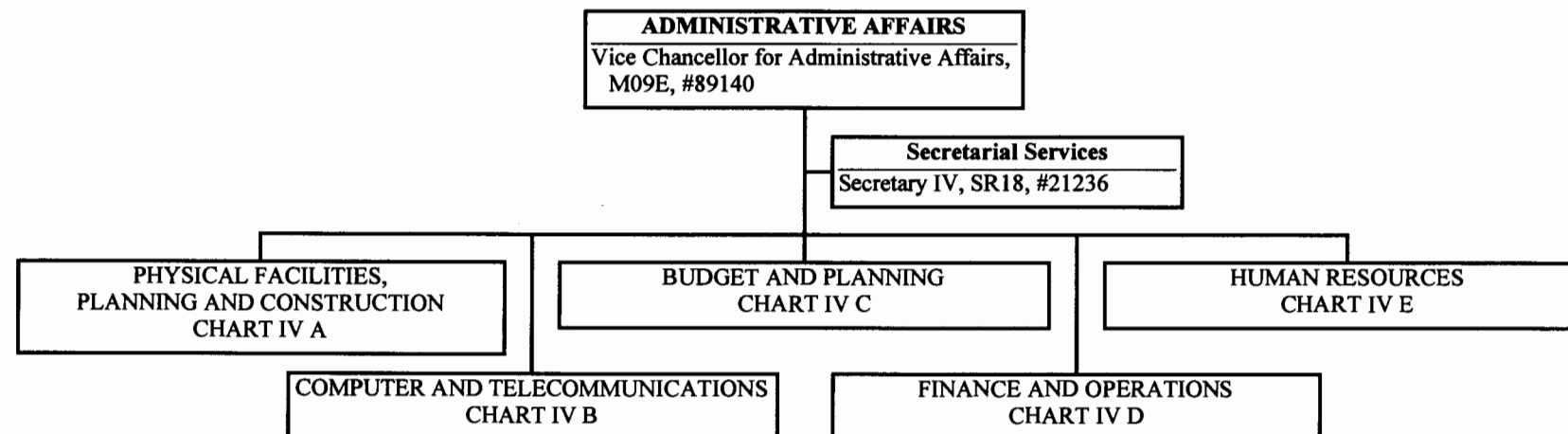
APPROVED/DISAPPROVED:
[Signature] 07/01/98
SENIOR VICE PRESIDENT / DATE
CHANCELLOR FOR COMMUNITY COLLEGES

CHART UPDATED
DATE JUL - 1 1998

STATE OF HAWAII
UNIVERSITY OF HAWAII
COMMUNITY COLLEGES
OFFICE OF THE SENIOR VICE PRESIDENT
AND
CHANCELLOR FOR COMMUNITY COLLEGES

POSITION ORGANIZATION CHART

CHART IV



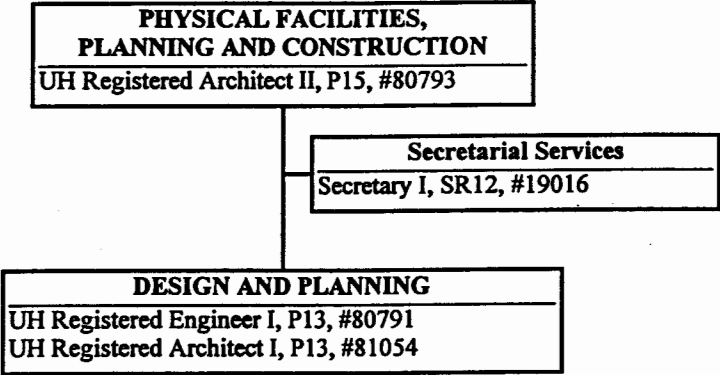
Perm
General Fund 2.00

CHART UPDATED
DATE JUL - 1 1998

STATE OF HAWAII
UNIVERSITY OF HAWAII
COMMUNITY COLLEGES
OFFICE OF THE SENIOR VICE PRESIDENT
AND
CHANCELLOR FOR COMMUNITY COLLEGES

POSITION ORGANIZATION CHART

CHART IV A



Perm
General Fund 4.00

APPROVED/DISAPPROVED:
[Signature] 10-21-98

SENIOR VICE PRESIDENT/ DATE
CHANCELLOR FOR COMMUNITY COLLEGES

STATE OF HAWAII
UNIVERSITY OF HAWAII
COMMUNITY COLLEGES
OFFICE OF THE SENIOR VICE PRESIDENT
AND
CHANCELLOR FOR COMMUNITY COLLEGES

POSITION ORGANIZATION CHART

CHART IV B

COMPUTER AND TELECOMMUNICATIONS
UH Computer Specialist VI, P13, #81038+

UH Institutional Analyst II, P08, #80019

+ Position to be redescribed

General Fund Perm 2.00

APPROVED/DISAPPROVED:
Angel S. Lanza 07/01/98

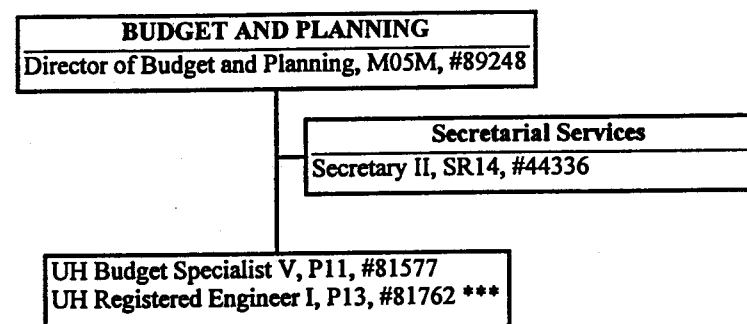
SENIOR VICE PRESIDENT/ DATE
CHANCELLOR FOR COMMUNITY COLLEGES

CHART UPDATED
JUL - 1 1998
DATE _____

STATE OF HAWAII
UNIVERSITY OF HAWAII
COMMUNITY COLLEGES
OFFICE OF THE SENIOR VICE PRESIDENT
AND
CHANCELLOR FOR COMMUNITY COLLEGES

POSITION ORGANIZATION CHART

CHART IV C



Perm
General Fund 4.00

***Position to be redescribed.

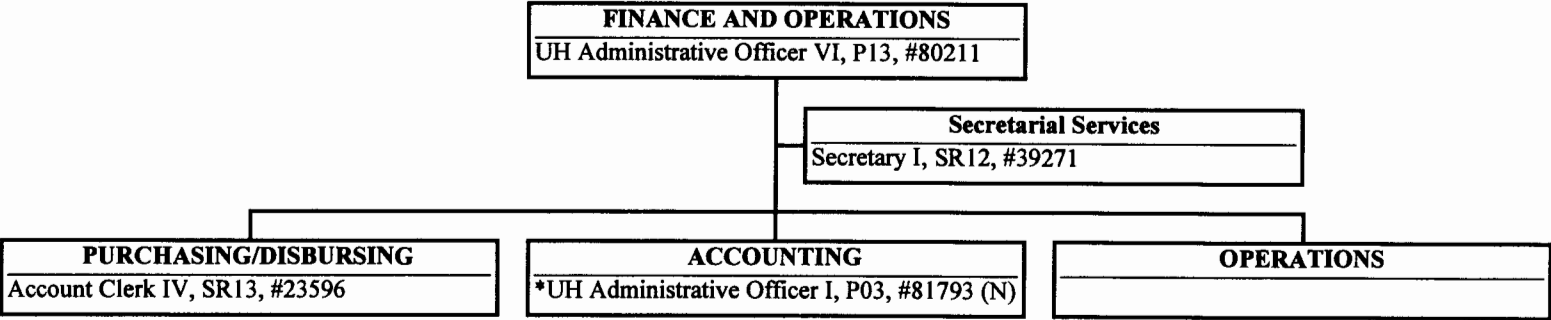
APPROVED/DISAPPROVED:
[Signature] 10/21/98

SENIOR VICE PRESIDENT/ DATE
CHANCELLOR FOR COMMUNITY COLLEGES

STATE OF HAWAII
UNIVERSITY OF HAWAII
COMMUNITY COLLEGES
OFFICE OF THE SENIOR VICE PRESIDENT
AND
CHANCELLOR FOR COMMUNITY COLLEGES

POSITION ORGANIZATION CHART

CHART IV D



* Temporary Position - Federally Funded

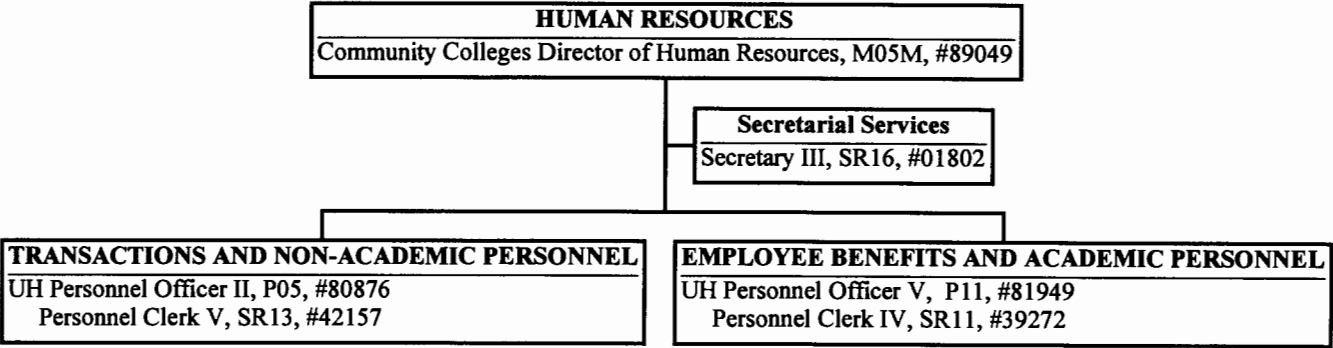
Perm
General Fund 3.00

CHART UPDATED
DATE JUL - 1 1998

STATE OF HAWAII
UNIVERSITY OF HAWAII
COMMUNITY COLLEGES
OFFICE OF THE SENIOR VICE PRESIDENT
AND
CHANCELLOR FOR COMMUNITY COLLEGES

POSITION ORGANIZATION CHART

CHART IV E



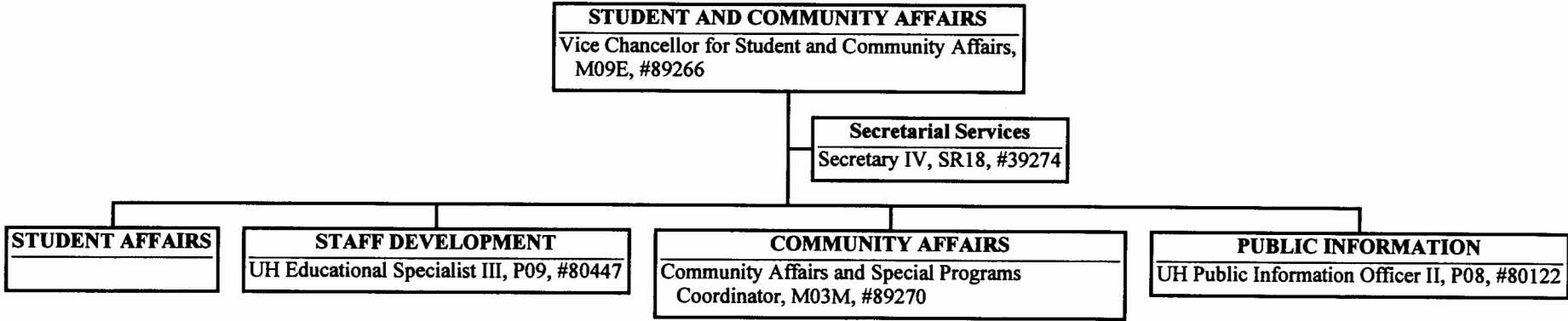
General Fund Perm 6.00

CHART UPDATED
DATE JUL - 1 1998

STATE OF HAWAII
UNIVERSITY OF HAWAII
COMMUNITY COLLEGES
OFFICE OF THE SENIOR VICE PRESIDENT
AND
CHANCELLOR FOR COMMUNITY COLLEGES

POSITION ORGANIZATION CHART

CHART V



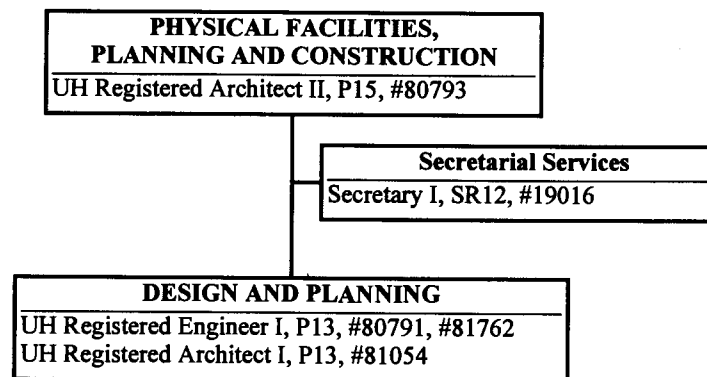
General Fund Perm 5.00

CHART UPDATED
JUL - 1 1998
DATE _____

STATE OF HAWAII
UNIVERSITY OF HAWAII
COMMUNITY COLLEGES
OFFICE OF THE SENIOR VICE PRESIDENT
AND
CHANCELLOR FOR COMMUNITY COLLEGES

POSITION ORGANIZATION CHART

CHART IV A



Perm
General Fund 5.00

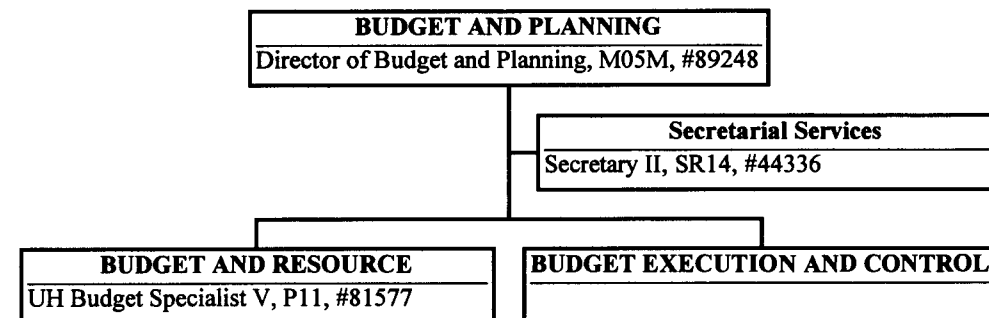
SUPERSEDED
Date OCT 21 1998

CHART UPDATED
DATE JUL - 1 1998

STATE OF HAWAII
UNIVERSITY OF HAWAII
COMMUNITY COLLEGES
OFFICE OF THE SENIOR VICE PRESIDENT
AND
CHANCELLOR FOR COMMUNITY COLLEGES

POSITION ORGANIZATION CHART

CHART IV C



General Fund Perm 3.00

SUPERSEDED
Date OCT 21 1998

CHART UPDATED
DATE JUL - 1 1998