

STATE OF HAWAII
UNIVERSITY OF HAWAII
COMMUNITY COLLEGES
HAWAII COMMUNITY COLLEGE

Organization Chart

Chart I

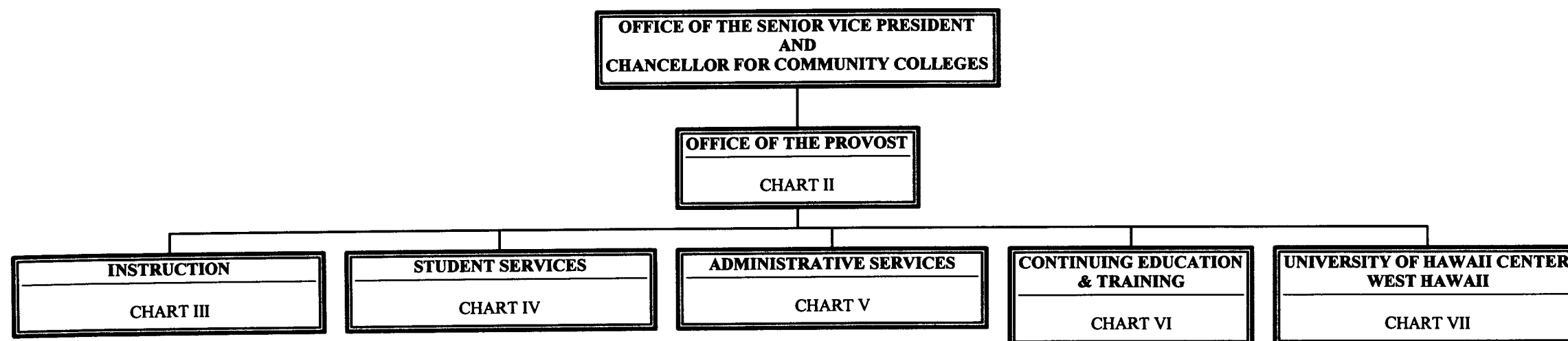


CHART UPDATED
DATE JUL - 1 1998

	<u>Perm</u>	<u>Temp</u>
General Fund	135.00	5.00
(B) Special Funds	1.00	

STATE OF HAWAII
UNIVERSITY OF HAWAII
COMMUNITY COLLEGES
HAWAII COMMUNITY COLLEGE
OFFICE OF THE PROVOST

Position Organization Chart

Chart II

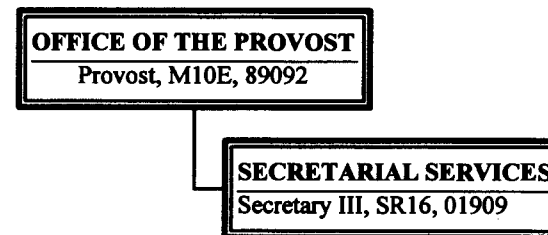


CHART UPDATED
DATE JUL - 1 1998

General Fund Perm
2.00

STATE OF HAWAII
UNIVERSITY OF HAWAII
COMMUNITY COLLEGES
HAWAII COMMUNITY COLLEGE
INSTRUCTION

Position Organization Chart

Chart III

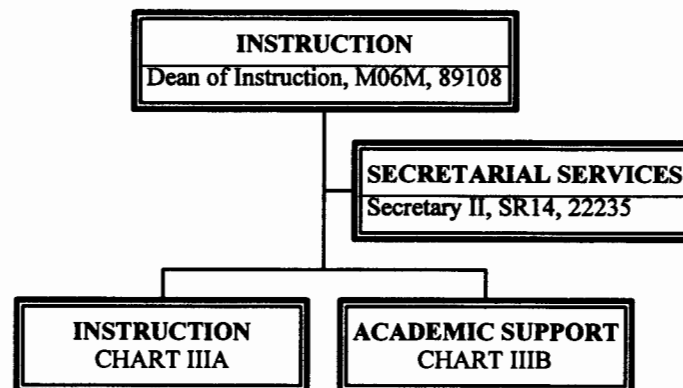


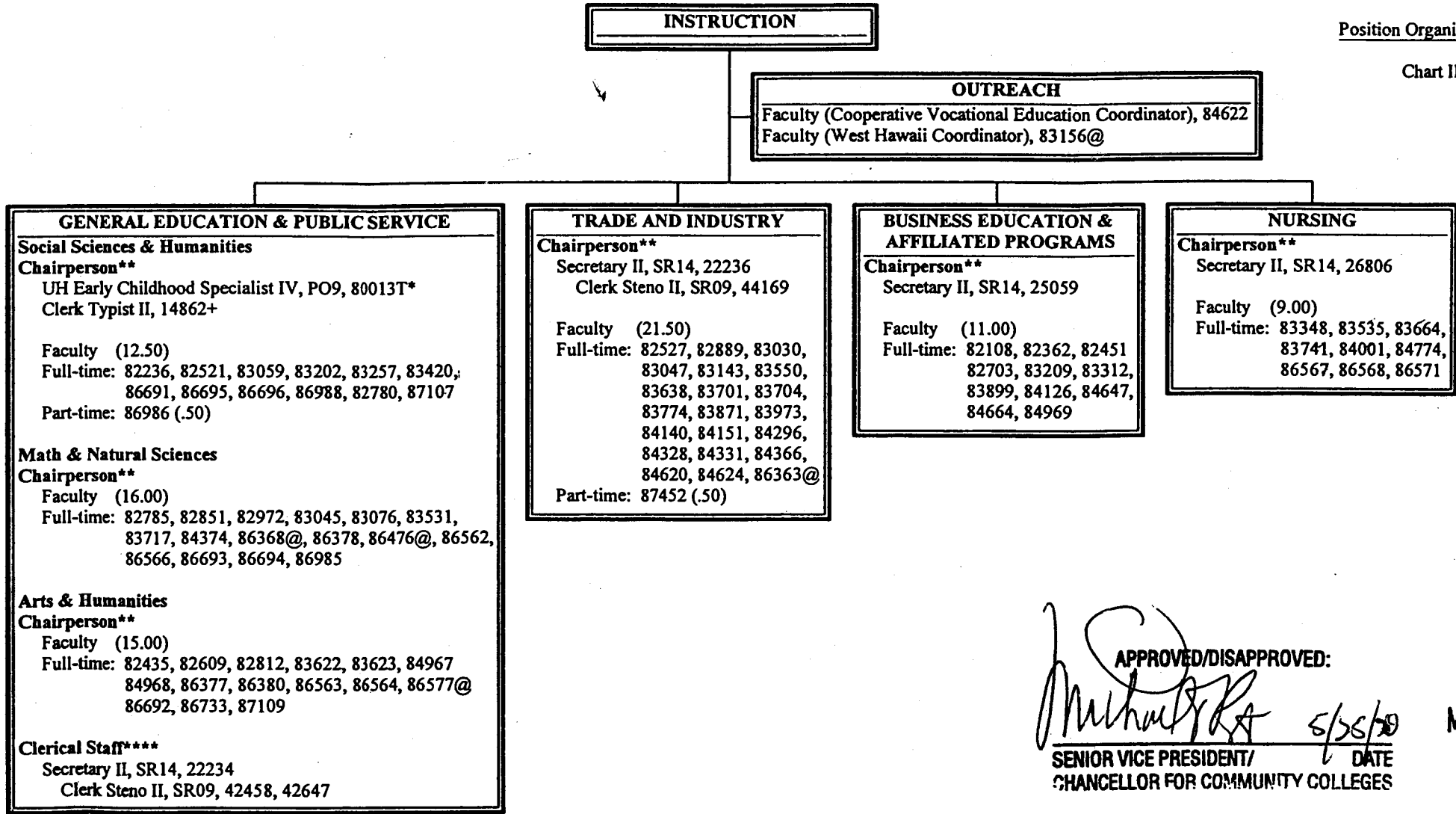
CHART UPDATED
JUL - 1 1998
DATE _____

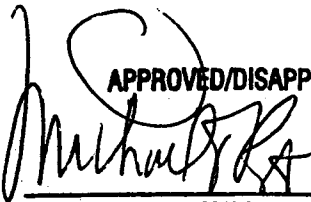
General Fund $\frac{\text{Perm}}{2.00}$

STATE OF HAWAII
UNIVERSITY OF HAWAII
COMMUNITY COLLEGES
HAWAII COMMUNITY COLLEGE
INSTRUCTION

Position Organization Chart

Chart III-A



APPROVED/DISAPPROVED:

5/25/99
SENIOR VICE PRESIDENT/
CHANCELLOR FOR COMMUNITY COLLEGES

MAY 25 1999

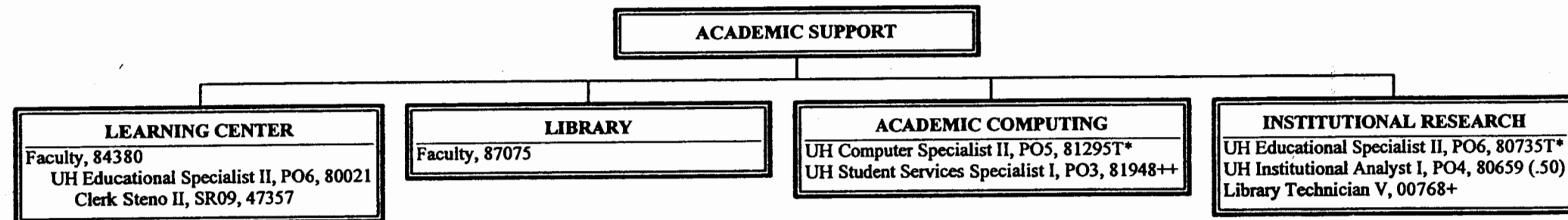
* Temporary Position
**Chairperson is appointed from among faculty positions within the department.
****Clerical staff serve all three General Education Departments.
@Position located at University of Hawaii Center, West Hawaii.
+To be established & submitted for classification action; position was abolished by DHRD; position count retained.

	Perm	Temp
General Fund	95.00	1.00

STATE OF HAWAII
UNIVERSITY OF HAWAII
COMMUNITY COLLEGES
HAWAII COMMUNITY COLLEGE
ACADEMIC SUPPORT

Position Organization Chart

Chart III-B



APPROVED/DISAPPROVED:
[Signature] 1/12/99

SENIOR VICE PRESIDENT/
CHANCELLOR FOR COMMUNITY COLLEGES

JAN 12 1999

* Temporary Position

+ To be established & submitted for classification action; position was abolished by DHRD; position count retained.

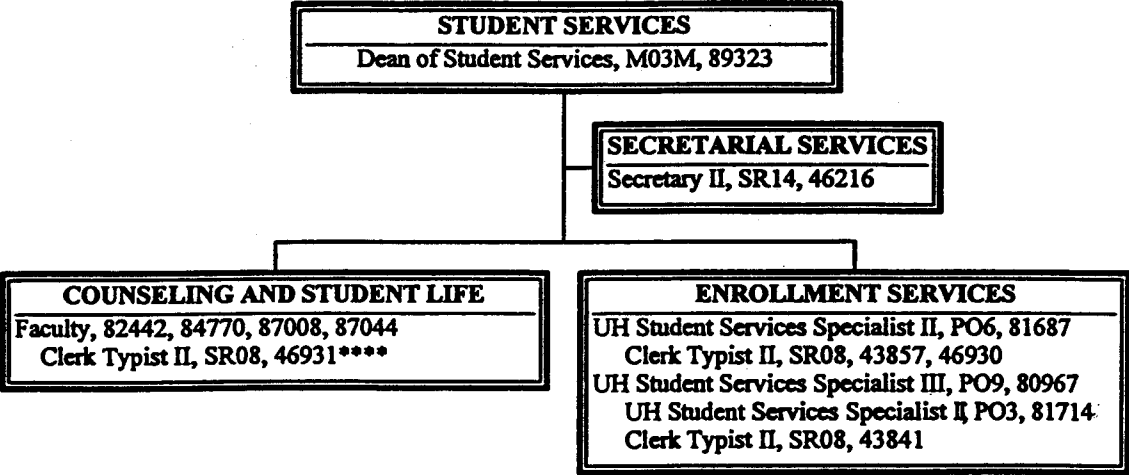
++Position reallocated from Windward CC 07/01/98; to be submitted for classification action.

	Perm	Temp
General Fund	6.50	2.00

STATE OF HAWAII
UNIVERSITY OF HAWAII
COMMUNITY COLLEGES
HAWAII COMMUNITY COLLEGE
STUDENT SERVICES

Position Organization Chart

Chart IV



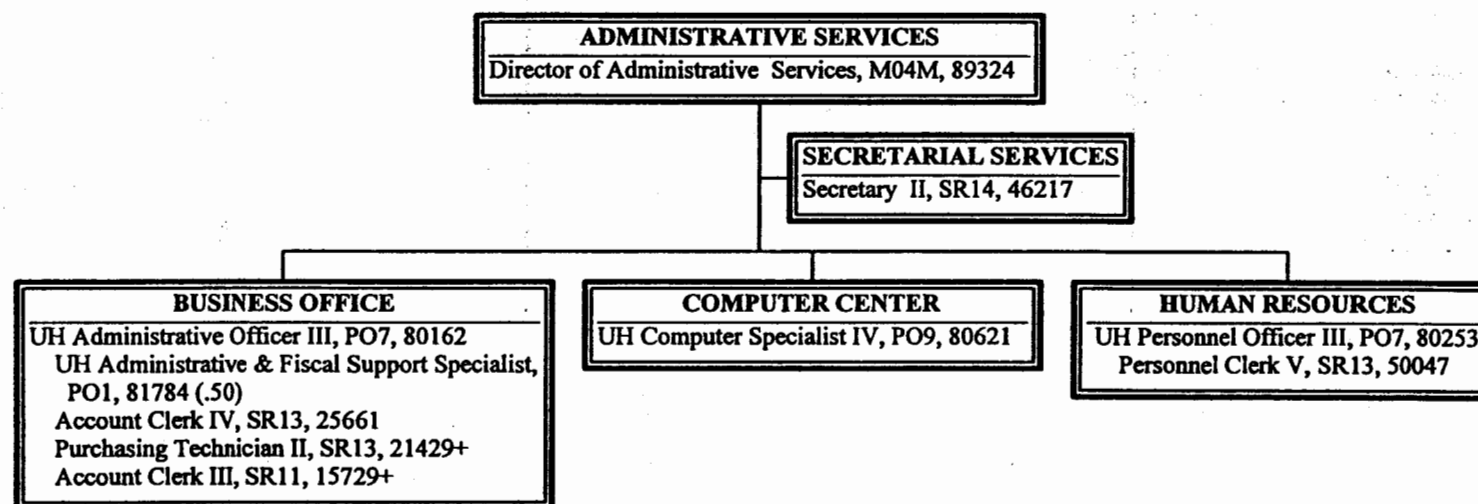
APPROVED/DISAPPROVED:
 8/10/98
SENIOR VICE PRESIDENT/ DATE
CHANCELLOR FOR COMMUNITY COLLEGES

****Clerk Typist reports to the senior faculty of Counseling & Student Life
&Position to be submitted for reclassification

STATE OF HAWAII
UNIVERSITY OF HAWAII
COMMUNITY COLLEGES
HAWAII COMMUNITY COLLEGE
ADMINISTRATIVE SERVICES

Position Organization Chart

Chart V



~~APPROVED/DISAPPROVED:~~
[Signature] 1/25/99 (revised)
DATE
SENIOR VICE PRESIDENT/
CHANCELLOR FOR COMMUNITY COLLEGES

Perm

General Fund 9.50

+To be established & submitted for classification action; position was abolished by DHRD; position count retained.

STATE OF HAWAII
 UNIVERSITY OF HAWAII
 COMMUNITY COLLEGES
 HAWAII COMMUNITY COLLEGE
 CONTINUING EDUCATION & TRAINING

Position Organization Chart

Chart VI

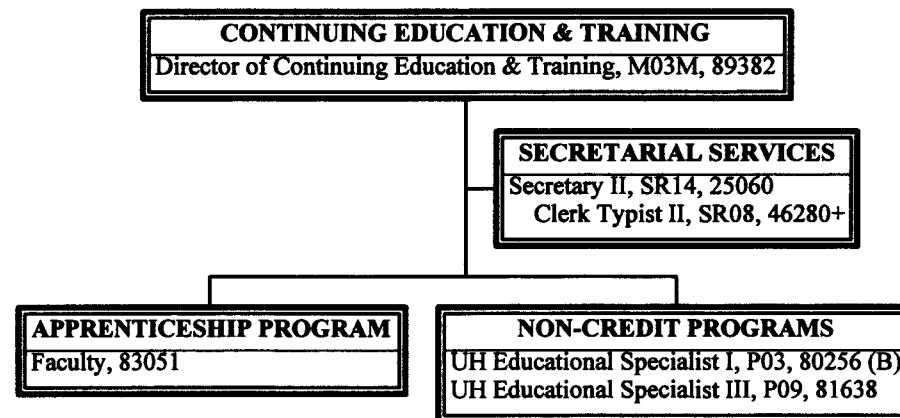


CHART UPDATED
 DATE JUL - 1 1998

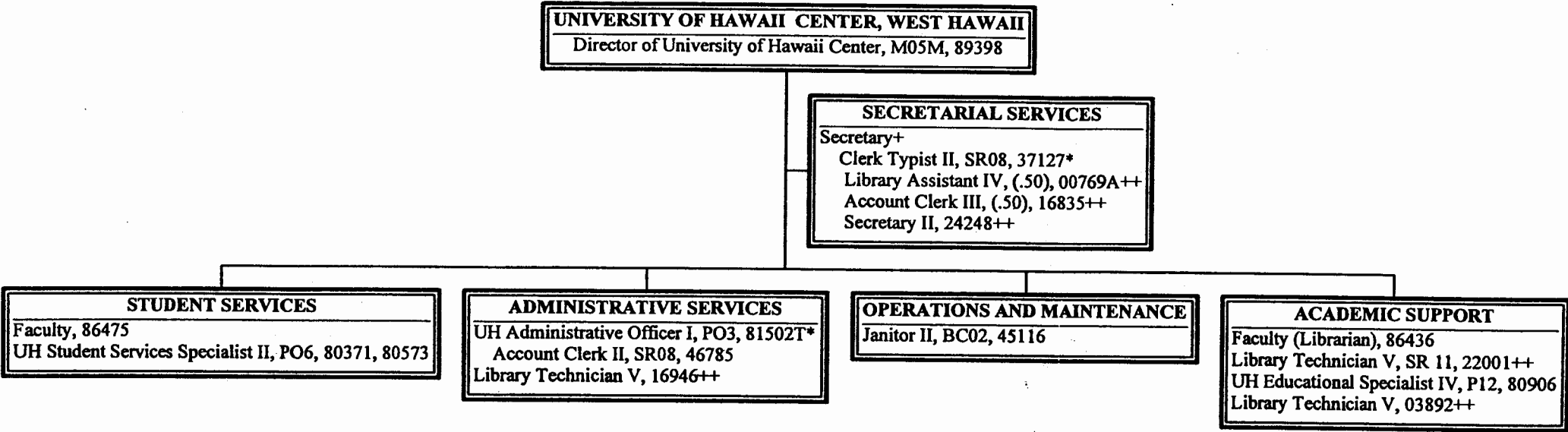
+To be redescribed and submitted for classification action

	<u>Perm</u>
General Fund	5.00
(B) Special Funds	1.00


STATE OF HAWAII
UNIVERSITY OF HAWAII
COMMUNITY COLLEGES
HAWAII COMMUNITY COLLEGE
UNIVERSITY OF HAWAII CENTER, WEST HAWAII

Position Organization Chart

Chart VII



APPROVED/DISAPPROVED:


6/9/99

DATE
SENIOR VICE PRESIDENT/
CHANCELLOR FOR COMMUNITY COLLEGES

*Temporary Position

+Temporary Position established or to be established

++To be established or redescribed and submitted for classification action; reallocated positions; #16946 from UHM (abolished); #00769A from UHM; #16835 from UHM (abolished); #24248 from UHM (abolished); #03892 from UHM (abolished); #22001 from Leeward CC.

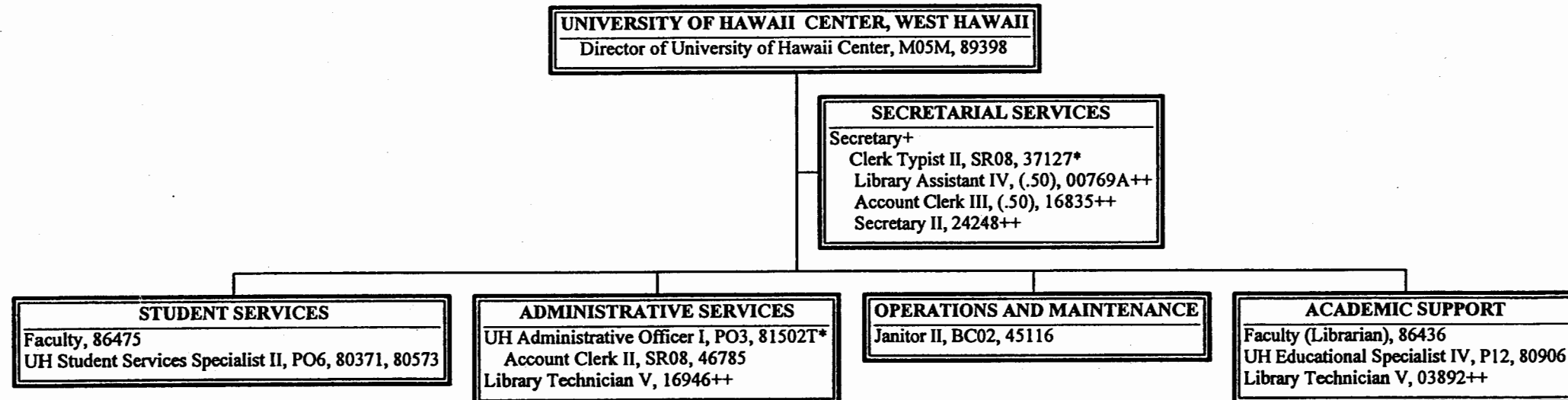
Perm Temp

General Fund 13.00 2.00

STATE OF HAWAII
UNIVERSITY OF HAWAII
COMMUNITY COLLEGES
HAWAII COMMUNITY COLLEGE
UNIVERSITY OF HAWAII CENTER, WEST HAWAII

Position Organization Chart

Chart VII



MAY 25 1999

SUPERSEDED
Date JUN - 9 1999

APPROVED/DISAPPROVED:
[Signature] 5/25/99
SENIOR VICE PRESIDENT/
CHANCELLOR FOR COMMUNITY COLLEGES

*Temporary Position

+Temporary Position established or to be established

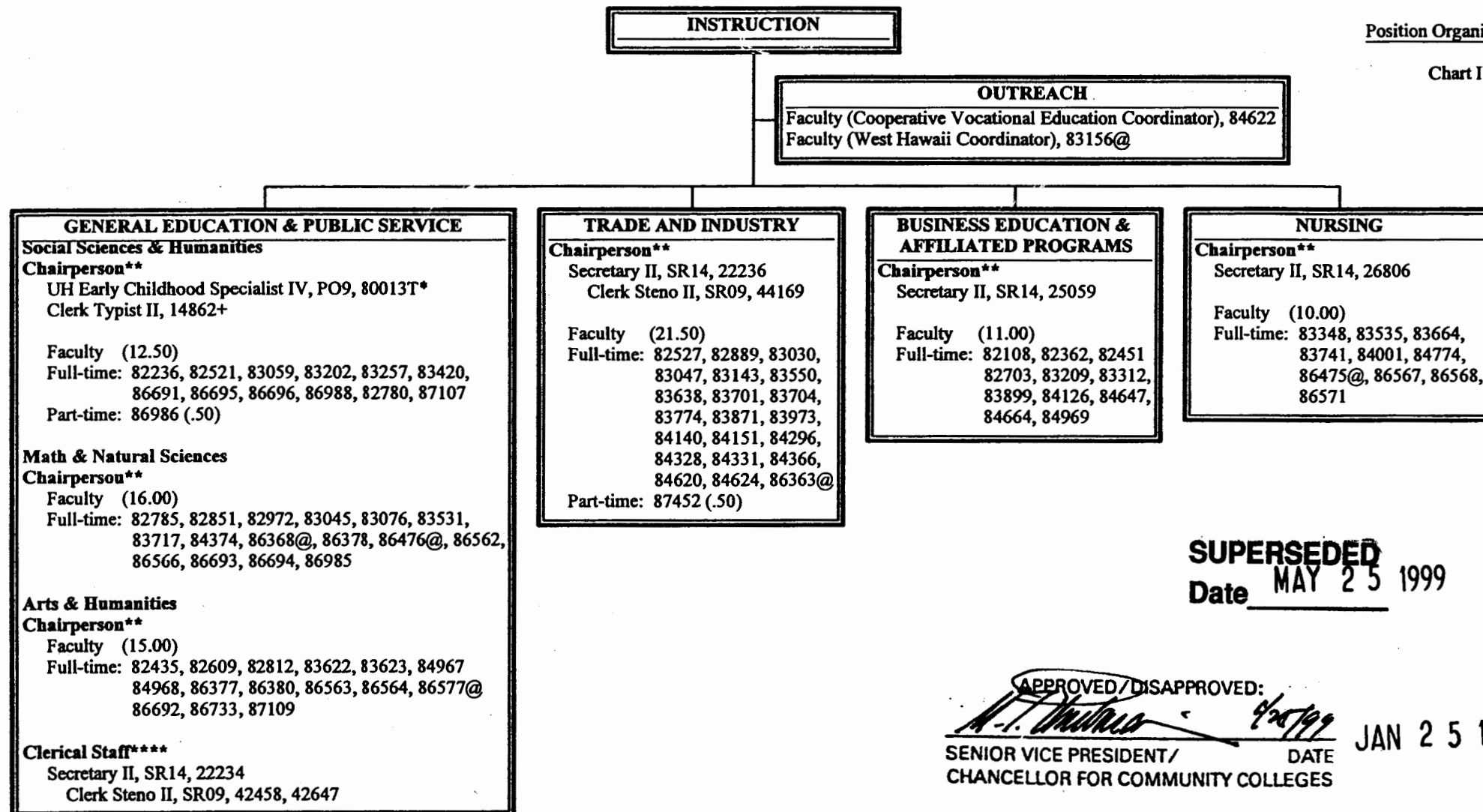
++To be established and submitted for classification action; reallocated positions; #16946 from UHM (abolished); #00769A from UHM; #16835 from UHM (abolished); #24248 from UHM (abolished); #03892 from UHM (abolished).

	Perm	Temp
General Fund	12.00	2.00

STATE OF HAWAII
UNIVERSITY OF HAWAII
COMMUNITY COLLEGES
HAWAII COMMUNITY COLLEGE
INSTRUCTION

Position Organization Chart

Chart III-A



SUPERSEDED
Date MAY 25 1999

APPROVED/DISAPPROVED:
[Signature] 4/25/99
SENIOR VICE PRESIDENT/
CHANCELLOR FOR COMMUNITY COLLEGES

JAN 25 1999

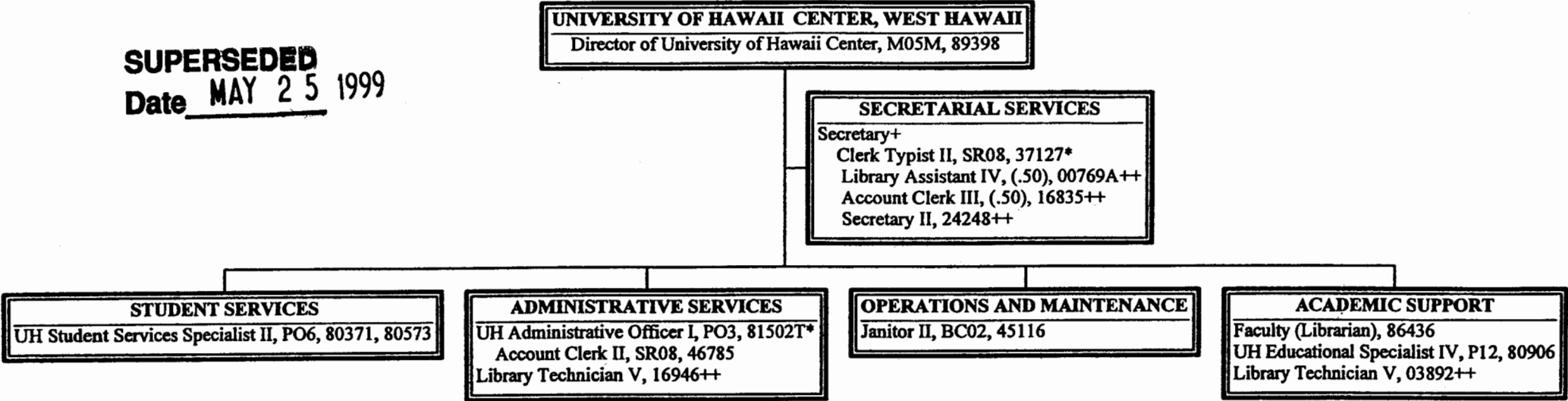
* Temporary Position
**Chairperson is appointed from among faculty positions within the department.
****Clerical staff serve all three General Education Departments.
@Position located at University of Hawaii Center, West Hawaii.
+To be established & submitted for classification action; position was abolished by DHRD; position count retained.

	Perm	Temp
General Fund	96.00	1.00

STATE OF HAWAII
UNIVERSITY OF HAWAII
COMMUNITY COLLEGES
HAWAII COMMUNITY COLLEGE
UNIVERSITY OF HAWAII CENTER, WEST HAWAII

Position Organization Chart

Chart VII



APPROVED/DISAPPROVED:

[Signature] 3/17/99

SENIOR VICE PRESIDENT/
CHANCELLOR FOR COMMUNITY COLLEGES

DATE

*Temporary Position

+Temporary Position established or to be established

++To be established and submitted for classification action; reallocated positions; #16946 from UHM (abolished); #00769A from UHM; #16835 from UHM (abolished); #24248 from UHM (abolished); #03892 from UHM (abolished).

Perm Temp

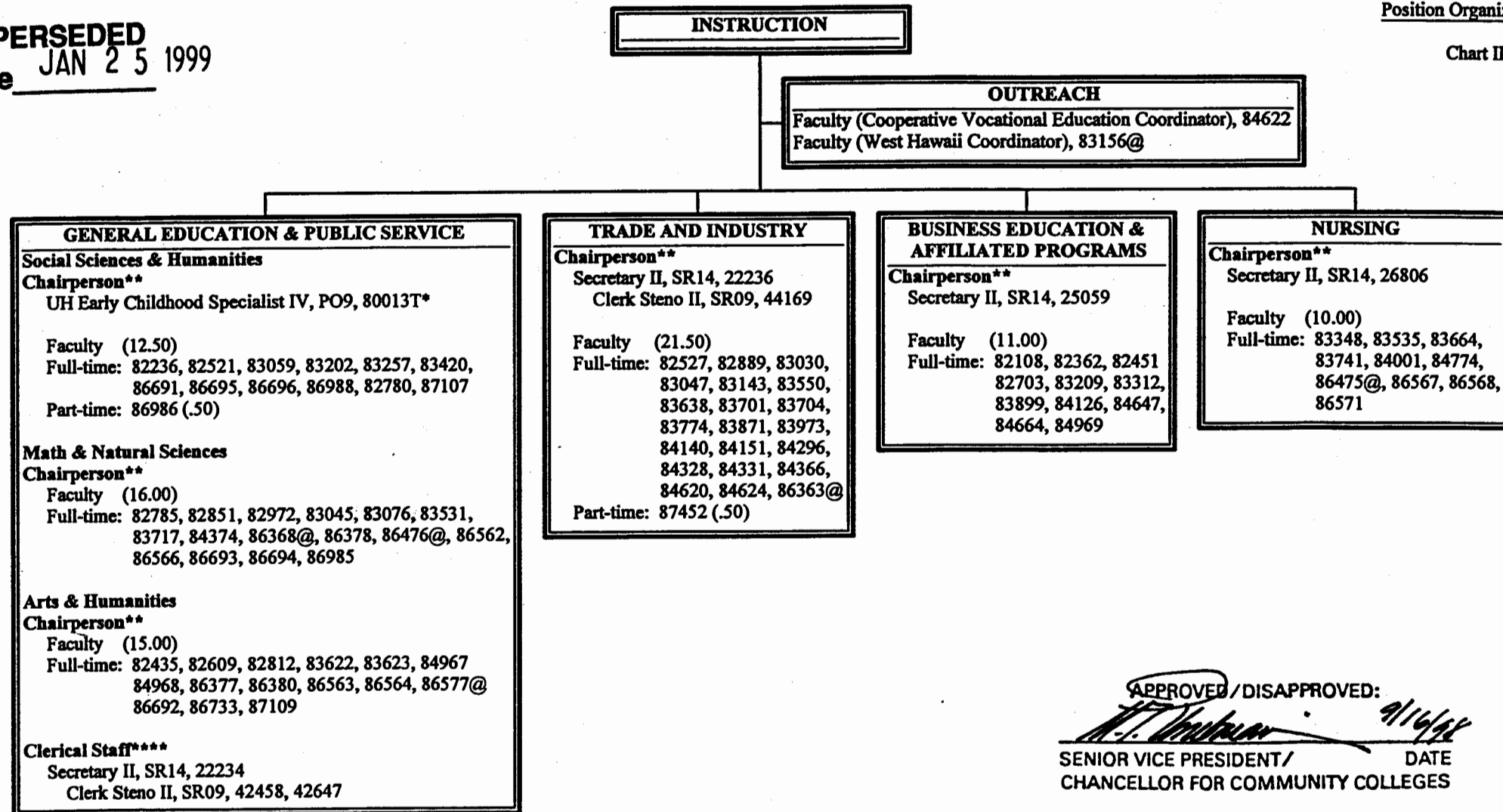
General Fund 11.00 2.00

STATE OF HAWAII
UNIVERSITY OF HAWAII
COMMUNITY COLLEGES
HAWAII COMMUNITY COLLEGE
INSTRUCTION

Position Organization Chart

Chart III-A

SUPERSEDED
Date JAN 25 1999



APPROVED / DISAPPROVED:

 9/16/98
SENIOR VICE PRESIDENT / DATE
CHANCELLOR FOR COMMUNITY COLLEGES

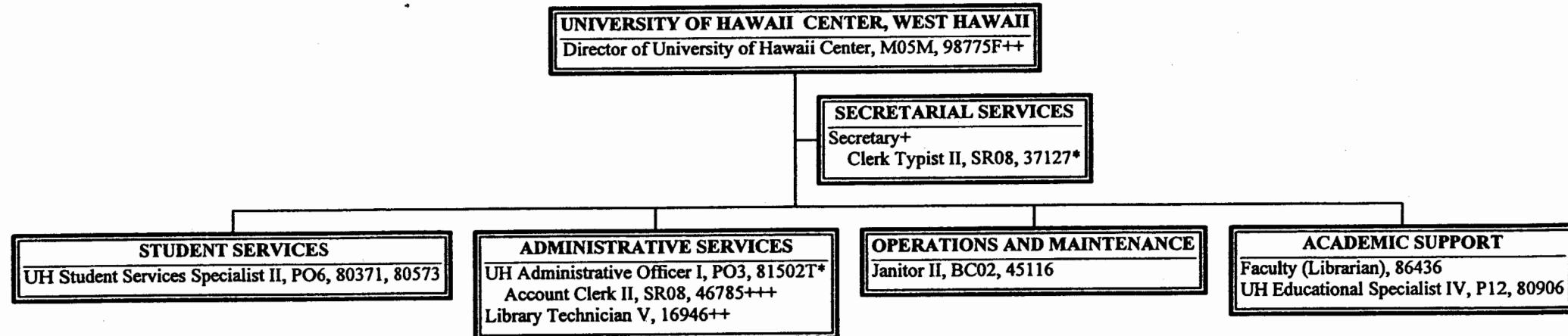
* Temporary Position
**Chairperson is appointed from among faculty positions within the department.
****Clerical staff serve all three General Education Departments.
@Position located at University of Hawaii Center, West Hawaii.

	<u>Perm</u>	<u>Temp</u>
General Fund	95.00	1.00

STATE OF HAWAII
UNIVERSITY OF HAWAII
COMMUNITY COLLEGES
HAWAII COMMUNITY COLLEGE
UNIVERSITY OF HAWAII CENTER, WEST HAWAII

Position Organization Chart

Chart VII



SUPERSEDED
Date MAR 17 1999

APPROVED/DISAPPROVED:
[Signature]
SENIOR VICE PRESIDENT / DATE
CHANCELLOR FOR COMMUNITY COLLEGES

*Temporary Position
+Temporary Position established or to be established
++To be established and submitted for classification action;
+++Position redescribed

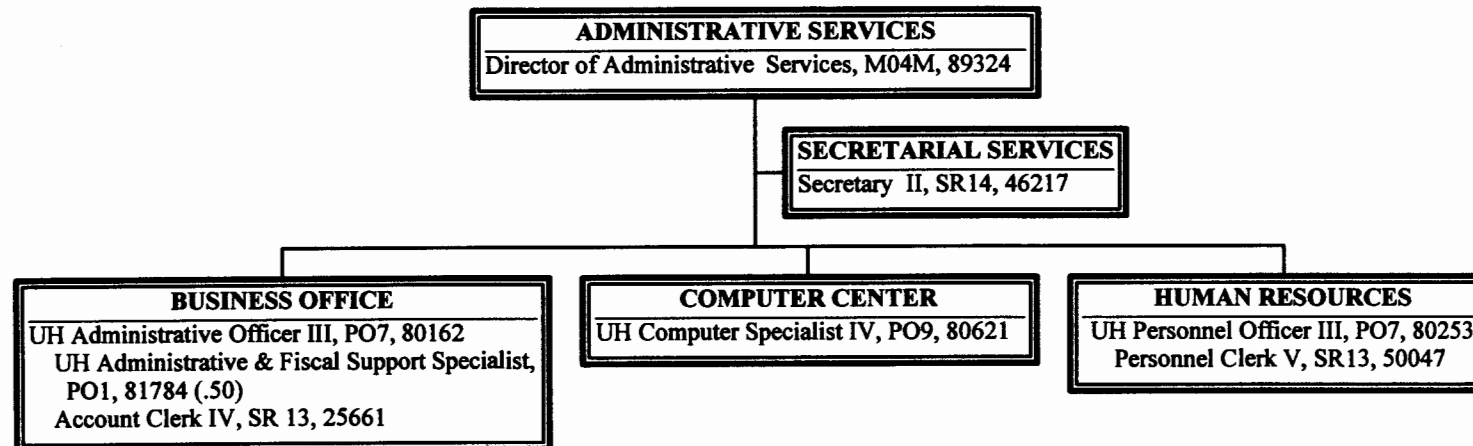
reallocated positions;
Director from Kauai CC &
Library Tech from UHM
(abolished).

	Perm	Temp
General Fund	8.00	2.00

STATE OF HAWAII
UNIVERSITY OF HAWAII
COMMUNITY COLLEGES
HAWAII COMMUNITY COLLEGE
ADMINISTRATIVE SERVICES

Position Organization Chart

Chart V



SUPERSEDED
Date JAN 25 1999

CHART UPDATED
DATE JUL - 1 1998

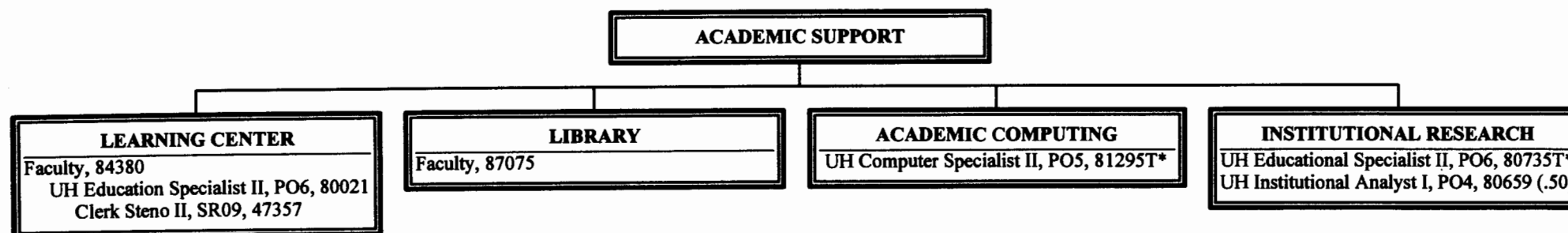
Perm

General Fund 7.50

STATE OF HAWAII
UNIVERSITY OF HAWAII
COMMUNITY COLLEGES
HAWAII COMMUNITY COLLEGE
ACADEMIC SUPPORT

Position Organization Chart

Chart III-B



SUPERSEDED
Date JAN 12 1999

APPROVED/DISAPPROVED:
[Signature] 07/01/98

SENIOR VICE PRESIDENT/ CHANCELLOR FOR COMMUNITY COLLEGES
DATE

CHART UPDATED
DATE JUL - 1 1998

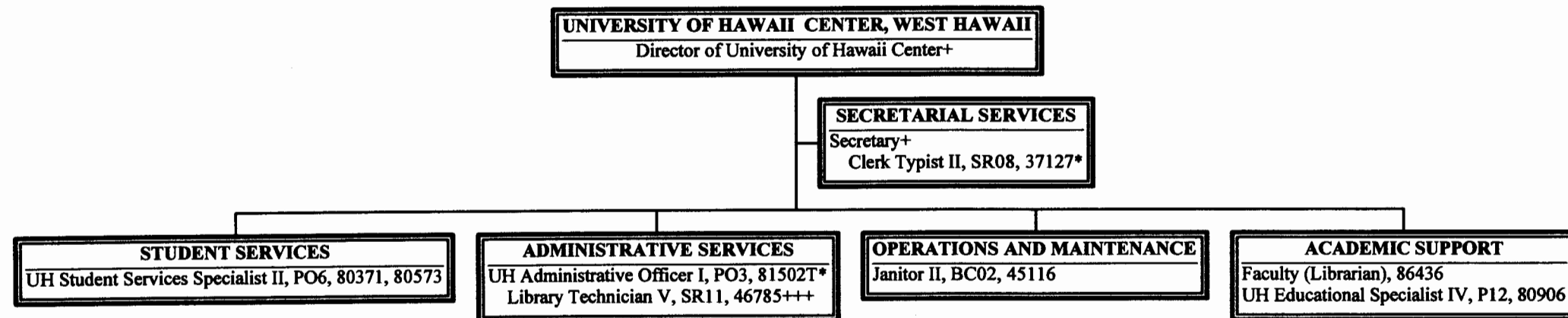
* Temporary Position

	<u>Perm</u>	<u>Temp</u>
General Fund	4.50	2.00

STATE OF HAWAII
UNIVERSITY OF HAWAII
COMMUNITY COLLEGES
HAWAII COMMUNITY COLLEGE
UNIVERSITY OF HAWAII CENTER, WEST HAWAII

Position Organization Chart

Chart VII



SUPERSEDED
Date DEC 29 1998

CHART UPDATED
DATE JUL - 1 1998

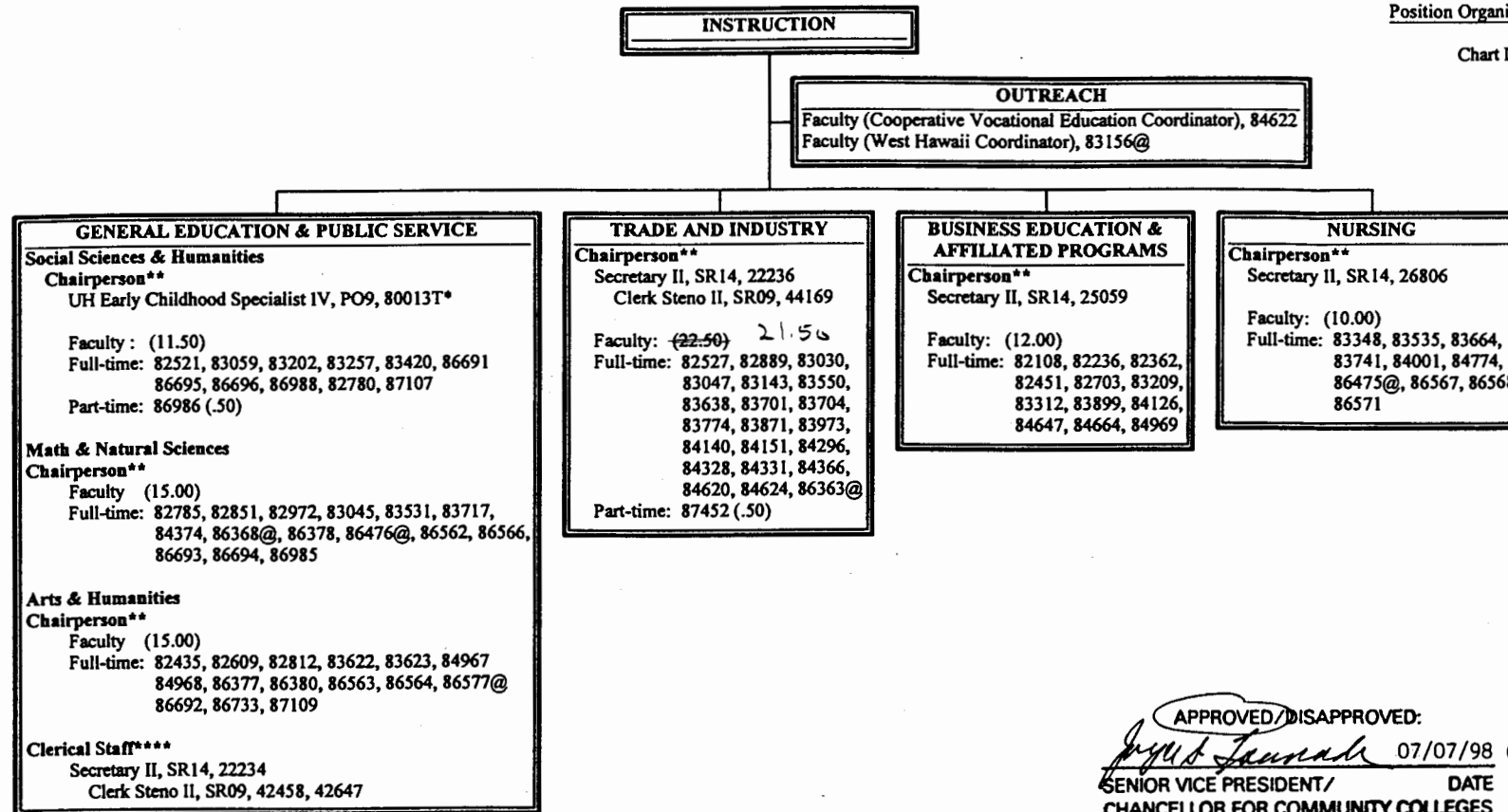
*Temporary Position
+Temporary Position established or to be established
+++Position to be redescribed

	Perm	Temp
General Fund	6.00	2.00

STATE OF HAWAII
UNIVERSITY OF HAWAII
COMMUNITY COLLEGES
HAWAII COMMUNITY COLLEGE
INSTRUCTION

Position Organization Chart

Chart IIIA



APPROVED/DISAPPROVED:

[Signature] 07/07/98 (Revised)
SENIOR VICE PRESIDENT/ DATE
CHANCELLOR FOR COMMUNITY COLLEGES

- * Temporary Position
- **Chairperson is appointed from among faculty positions within the department.
- ****Clerical staff serve all three General Education Departments.
- @Position located at University of Hawaii Center, West Hawaii.

	Perm	Temp
General Fund	95.00	1.00
	94.00	

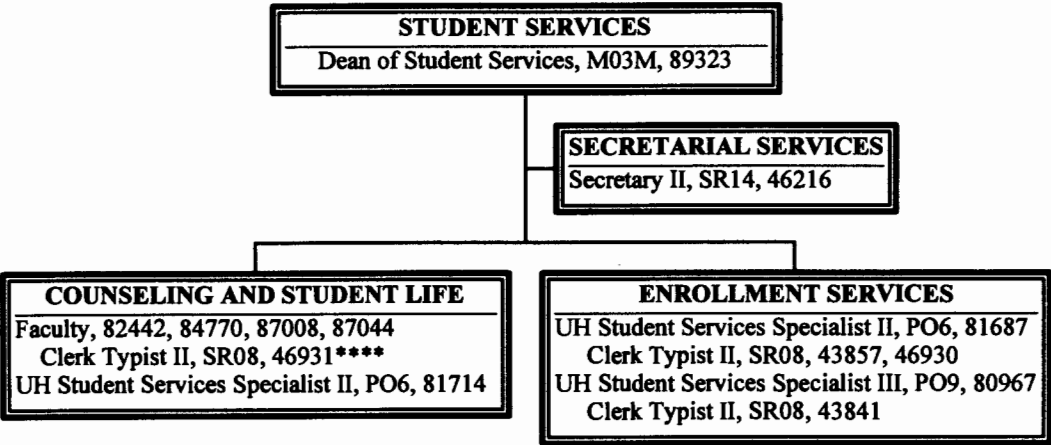
SUPERSEDED

Date SEP 16 1998

STATE OF HAWAII
UNIVERSITY OF HAWAII
COMMUNITY COLLEGES
HAWAII COMMUNITY COLLEGE
STUDENT SERVICES

Position Organization Chart

Chart IV



SUPERSEDED
Date AUG 10 1998

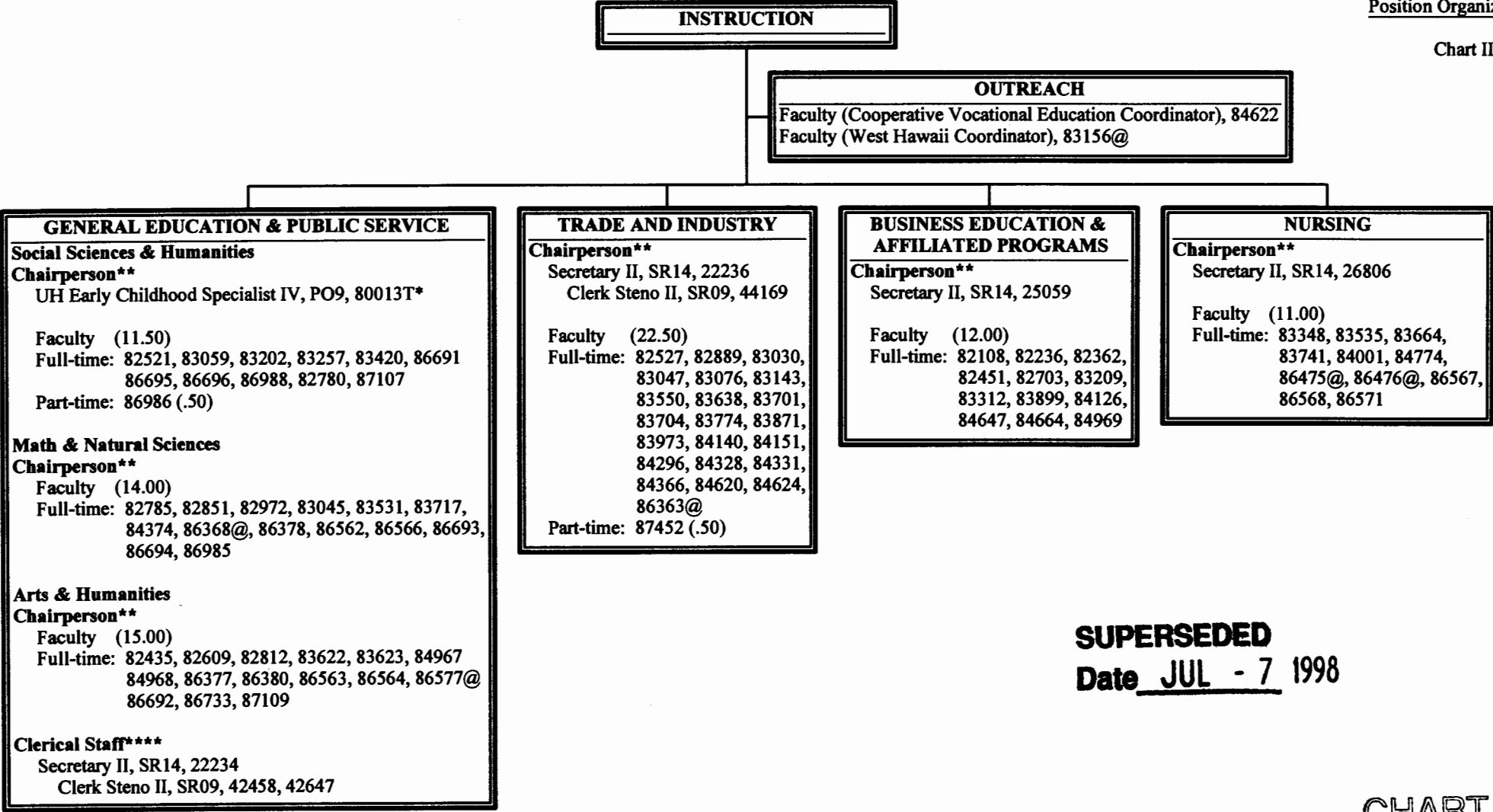
****Clerk Typist reports to the senior faculty of Counseling & Student Life

CHART UPDATED
DATE JUL - 1 1998
General Fund Perm
 13.00

STATE OF HAWAII
UNIVERSITY OF HAWAII
COMMUNITY COLLEGES
HAWAII COMMUNITY COLLEGE
INSTRUCTION

Position Organization Chart

Chart III-A



SUPERSEDED
Date JUL - 7 1998

CHART UPDATED
DATE JUL - 1 1998

* Temporary Position
**Chairperson is appointed from among faculty positions within the department.
****Clerical staff serve all three General Education Departments.
@Position located at University of Hawaii Center, West Hawaii.

	Perm	Temp
General Fund	95.00	1.00