

STATE OF HAWAII
UNIVERSITY OF HAWAII
COMMUNITY COLLEGES
HONOLULU COMMUNITY COLLEGE

Organization Chart
Chart I

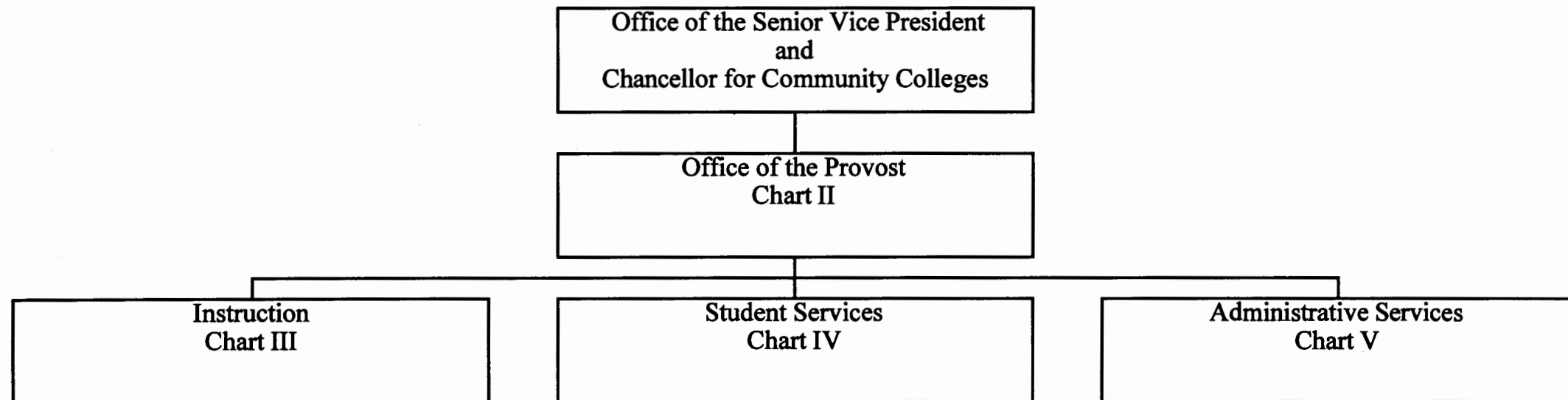


CHART UPDATED
DATE JUL - 1 1998

	<u>Perm</u>	<u>Temp</u>
General Fund	280.00	7.00
(B) Special Funds	5.00	
(W) Revolving Funds	14.00	

STATE OF HAWAII
UNIVERSITY OF HAWAII
COMMUNITY COLLEGES
HONOLULU COMMUNITY COLLEGE
OFFICE OF THE PROVOST

Position Organization Chart
Chart II

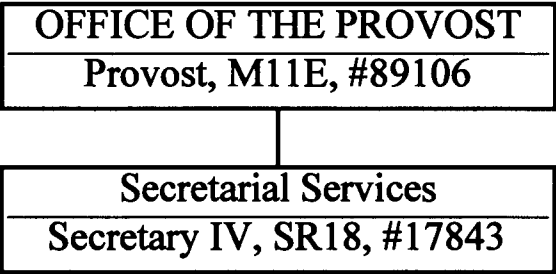


CHART UPDATED

DATE JUL - 1 1998

General Fund Perm
2.00

STATE OF HAWAII
UNIVERSITY OF HAWAII
COMMUNITY COLLEGES
HONOLULU COMMUNITY COLLEGE
INSTRUCTION

Position Organization Chart
Chart III

INSTRUCTION
Dean of Instruction, M07M, #89025

Keahole Flight Center
Assistant Dean of Instruction, M04M, #89338
Secretary, #93100F/***

Secretarial Services
Secretary III, SR16, #22374

School-to-Work
Faculty (Coordinator), #84376

Division I
Assistant Dean, M04M, #89111**
Secretary II, SR14, #08767**
Faculty (22.00)
Anthropology, #83341
Economics, #82987
Geography, #83820
Information and Computer Science,
#82060, 82131, 82233, 84669
UH Computer Specialist IV, P09, #81641
UH Computer Specialist III, P07, #81741
UH Educational Specialist II, P06, #81048,
80502T
Psychology, #82197, 84591
Social Science, #83893, 84457
Sociology, #82406
Carpentry, #82384, 83174
UH Machinist II, P06, #81203T*
Drafting Technology, #82092, 82956,
83167, 84649
Sheet Metal and Plastics, #84368
Welding, #83212, 84660
Apprenticeship, #83298
Clerk Typist II, SR08, #14215

Division II
Assistant Dean, M04M, #89148**
Secretary II, SR14, #01825**
UH Institutional Analyst II, P08, #81789
Faculty (31.00)
Fine Art, #83885
History, #82283, 83911
Humanities++
Philosophy, #82854, 83930
Religion, #82113
Speech, #83423
Administration of Justice, #83339
Communication Arts, #82969, 83894, 84471
Cosmetology, #82990, 83649, 83825, 84099
UH Educational and Academic Support Specialist, P01E,
#80879 (W)
Fashion, #82883, 84681
Fire and Environmental Emergency Response, #83639
Human Services, #82843, 83529, 83838, 84122, 86639,
86907, 86909, 86980, 87028, 87029, 87031, 87032
Clerk Stenographer II, SR09, #44568
UH Early Childhood Specialist, #94626F (W)***
UH Early Childhood Specialist III, P07, **, #80699, 81576,
81679, 81786, 81822, 80809 (W), 80817 (W), 80831 (W)
UH Early Childhood Specialist I, P01, **,
#80832 (W), 80834 (W), 80835 (W), 80839 (W),
80844 (W), 80845 (W), 80846 (W), 80862 (W)
Occupational and Environmental Safety Management, #83673

Division III
Assistant Dean, M04M, #89170**
Secretary II, SR14, #24735**
Faculty (32.00)
Biological Science, #82585, 84135
Chemistry, #83964
Electrical Engineering, #86615
Engineering Science, #83138
Mathematics, #82689, 82898, 83062,
83282, 83687, 83797, 84096,
84562, 84638, 84646
Oceanography, #82773
Physical Science, #82222, 83431,
83708, 83881
Science, #82331
Computing, Electronics, and Networking,
#83116, 83699, 86620, 86677
Electrical Installation and Maintenance,
#82757, 83368
Refrigeration and Air Conditioning,
#82422, 82518
Apprenticeship, #83695
Cooperative Education, #82444, 83604

Division IV
Assistant Dean, M04M, #89209**
Secretary II, SR14, #24544**
Faculty (32.00)
Asian Pacific Language, #83966
Asian Studies, #86638
Business++
English, #82440, 82466, 82561, 82796, 82912, 82959,
83416, 83698, 83807, 84545, 84633
Hawaiian Studies, #84689
Journalism++
Aeronautics Maintenance, #82383, 82567, 84423, 84533
UH Educational Specialist II, P06, #81476, 81559
Auto Body Repair and Painting, #84405, 86667, 87562
Automotive Mechanics, #83725, 83801, 84064, 84410, 84586,
84690, 84884
UH Educational Specialist II, P06, #81562
UH Educational Specialist I, P03, #81561
Diesel Mechanics, #82964, 84480
Marine Maintenance and Repair, #84688, 86927
UH Educational Specialist II, P06, #80652, 81182

Office Administration and Technology program discontinued
(BOR approved 3/20/92)

Commercial Baking program discontinued:
(BOR approved 5-24-96)
UH Educational and Academic Support
Specialist, P01, #80877 (W)

- * Temporary Position
- ** Rotating Position
- *** Position to be established
- ++ Courses to be taught by lecturers as needed

APPROVED/DISAPPROVED:

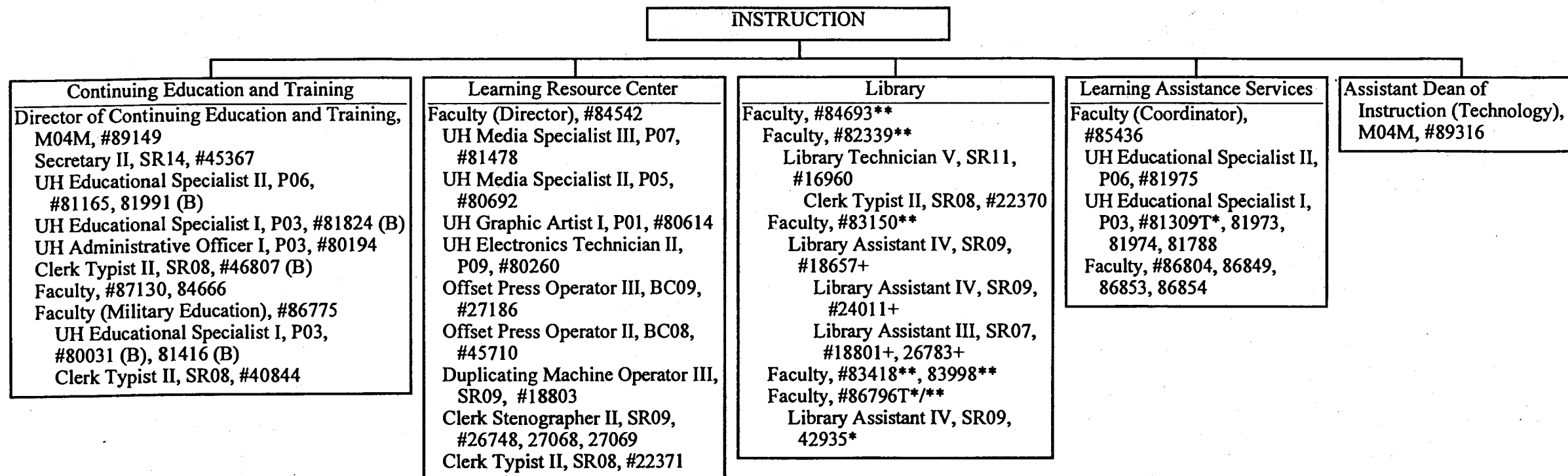
[Signature] 6/18/99
SENIOR VICE PRESIDENT/
CHANCELLOR FOR COMMUNITY COLLEGES

DATE

	<u>Perm</u>	<u>Temp</u>
General Fund	146.00	3.00
(W) Revolving Funds	14.00	

STATE OF HAWAII
UNIVERSITY OF HAWAII
COMMUNITY COLLEGES
HONOLULU COMMUNITY COLLEGE
INSTRUCTION

Position Organization Chart
Chart III A



APPROVED/DISAPPROVED:

J. L. Linnada 4/14/99
SENIOR VICE PRESIDENT/
CHANCELLOR FOR COMMUNITY COLLEGES

- * Temporary Position
- ** Rotating Position
- + To be redescribed

	<u>Perm</u>	<u>Temp</u>
General Fund	41.00	3.00
(B) Special Funds	5.00	

STATE OF HAWAII
UNIVERSITY OF HAWAII
COMMUNITY COLLEGES
HONOLULU COMMUNITY COLLEGE
STUDENT SERVICES

Position Organization Chart
Chart IV

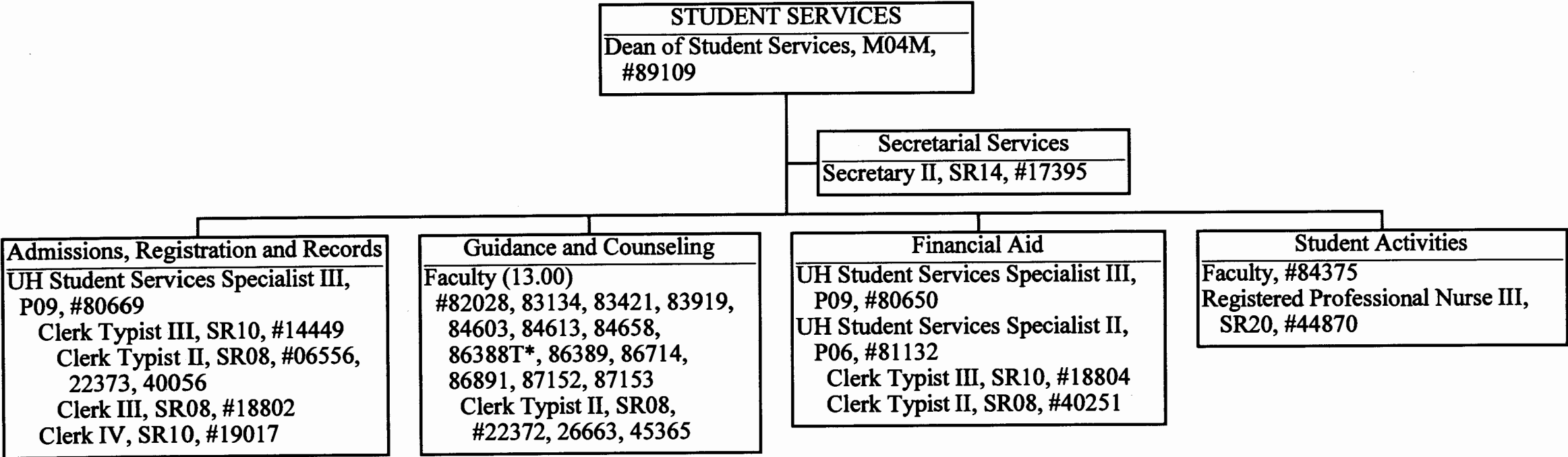


CHART UPDATED

DATE JUL - 1 1998

	<u>Perm</u>	<u>Temp</u>
General Fund	30.00	1.00

* Temporary Position

STATE OF HAWAII
UNIVERSITY OF HAWAII
COMMUNITY COLLEGES
HONOLULU COMMUNITY COLLEGE
ADMINISTRATIVE SERVICES

Position Organization Chart
Chart V

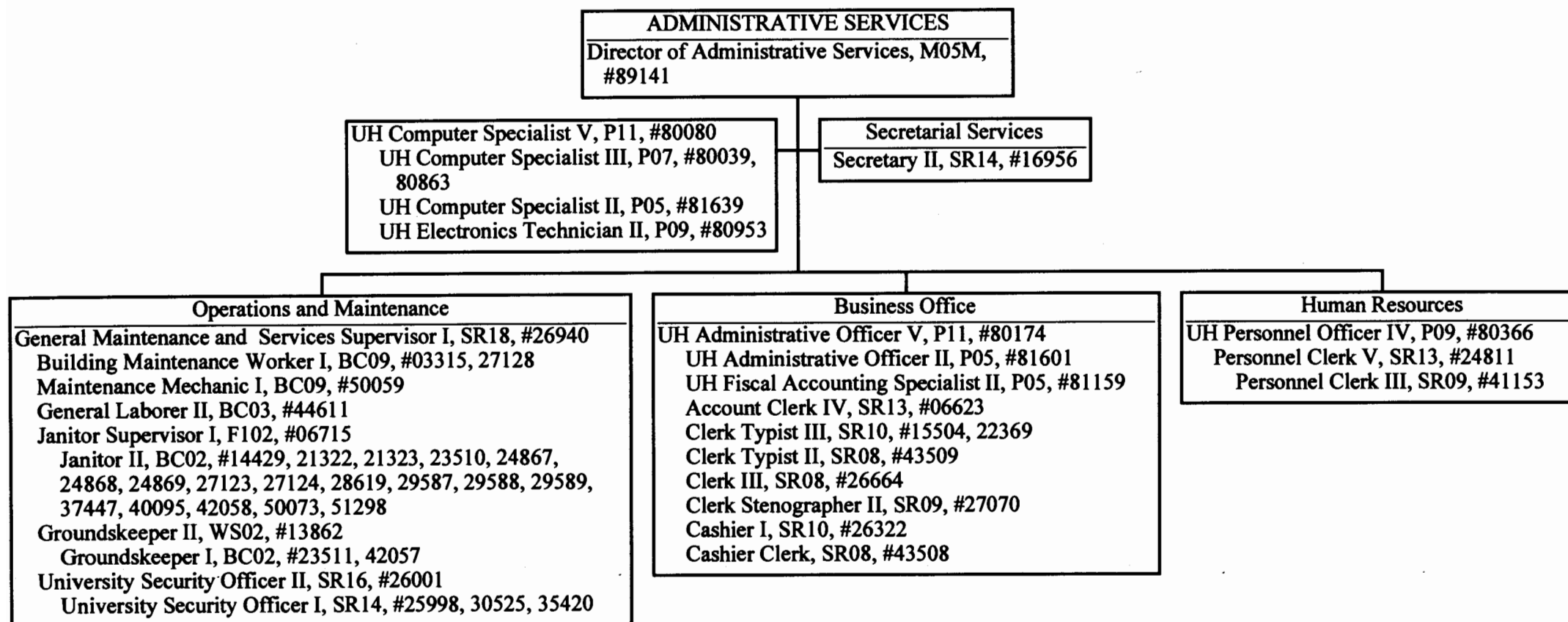
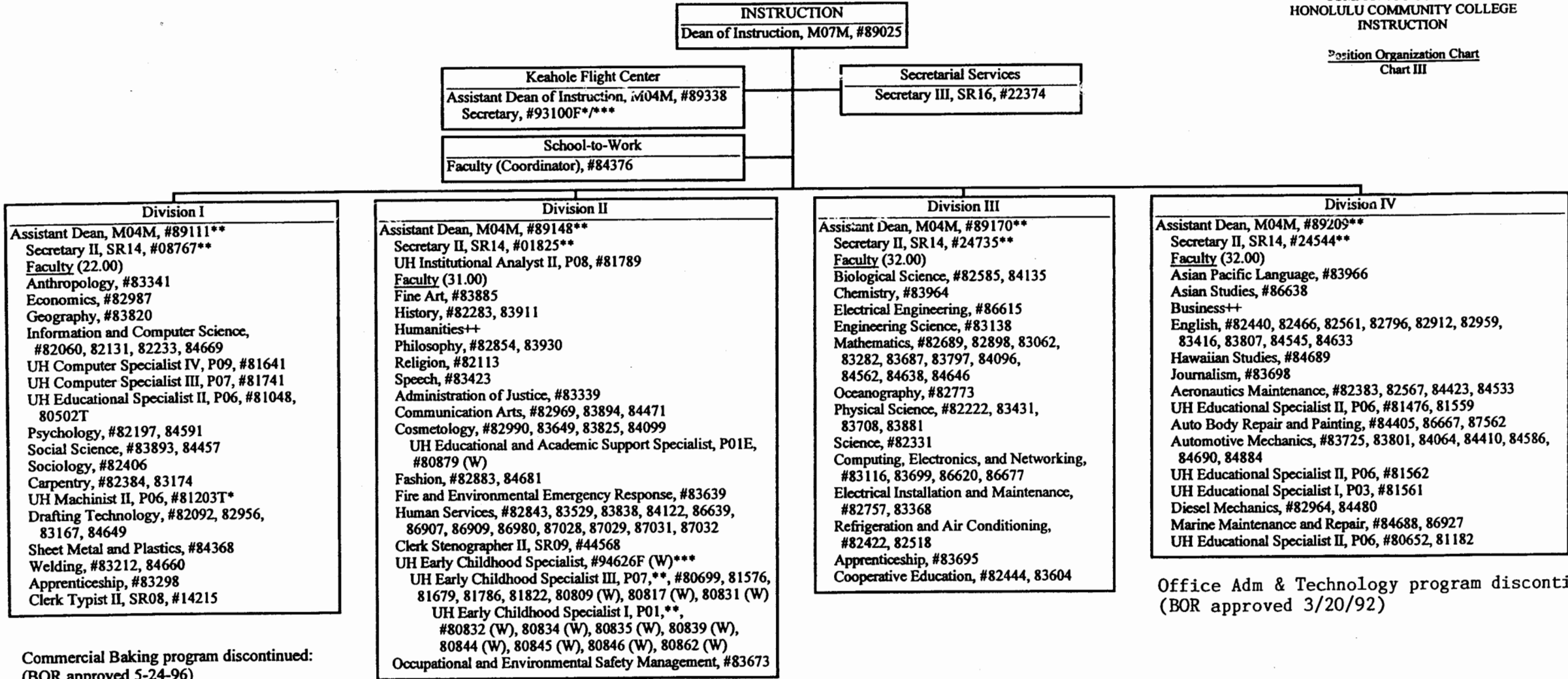


CHART UPDATED
DATE JUL - 1 1998

General Fund Perm
52.00

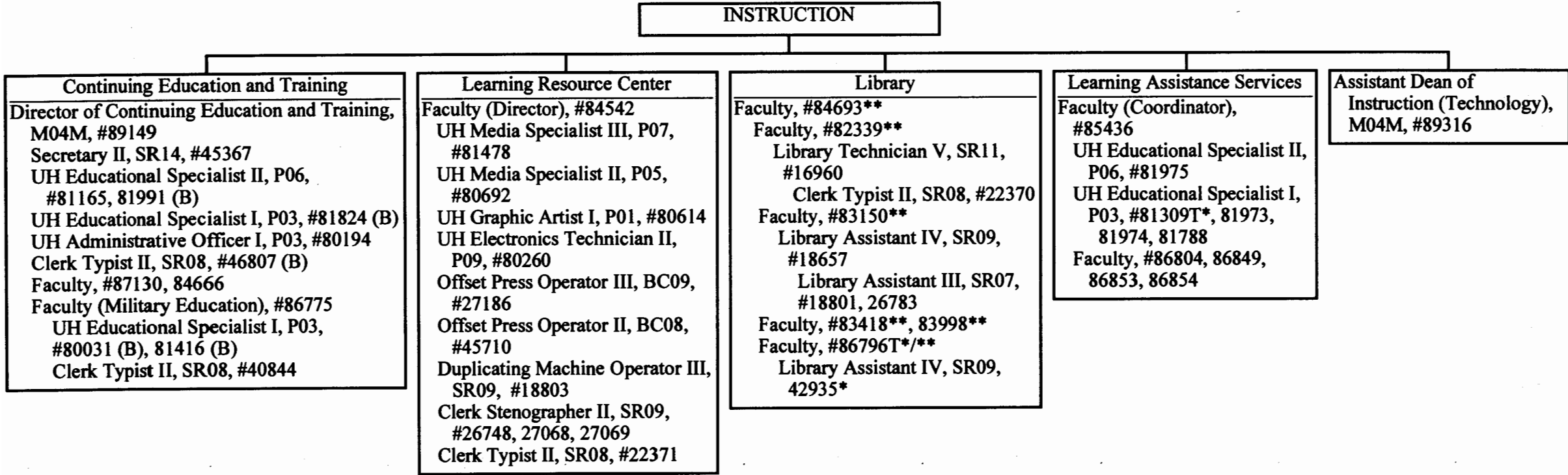
STATE OF HAWAII
UNIVERSITY OF HAWAII
COMMUNITY COLLEGES
HONOLULU COMMUNITY COLLEGE
INSTRUCTION

Position Organization Chart
Chart III



STATE OF HAWAII
UNIVERSITY OF HAWAII
COMMUNITY COLLEGES
HONOLULU COMMUNITY COLLEGE
INSTRUCTION

Position Organization Chart
Chart III A



SUPERSEDED
 Date APR 14 1999

APPROVED/DISAPPROVED:
[Signature] 07/01/98
 SENIOR VICE PRESIDENT/
 CHANCELLOR FOR COMMUNITY COLLEGES

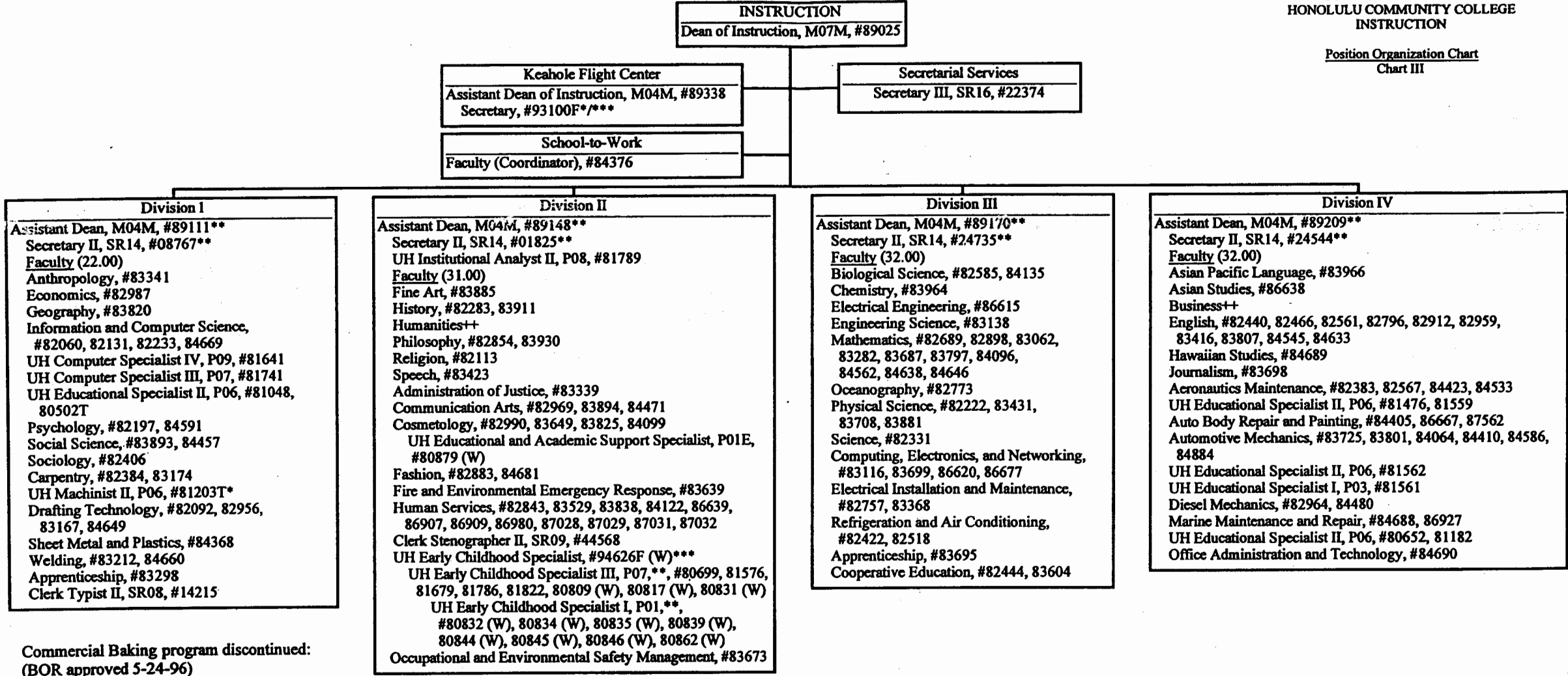
CHART UPDATED
 DATE JUL - 1 1998

- * Temporary Position
- ** Rotating Position
- + To be retitled

	<u>Perm</u>	<u>Temp</u>
General Fund	40.00	3.00
(B) Special Funds	5.00	


STATE OF HAWAII
UNIVERSITY OF HAWAII
COMMUNITY COLLEGES
HONOLULU COMMUNITY COLLEGE
INSTRUCTION

Position Organization Chart
Chart III



Commercial Baking program discontinued:
(BOR approved 5-24-96)
UH Educational and Academic Support
Specialist, P01, #80877 (W)

SUPERSEDED
Date APR 14 1999

APPROVED/DISAPPROVED:


SENIOR VICE PRESIDENT / DATE
CHANCELLOR FOR COMMUNITY COLLEGES

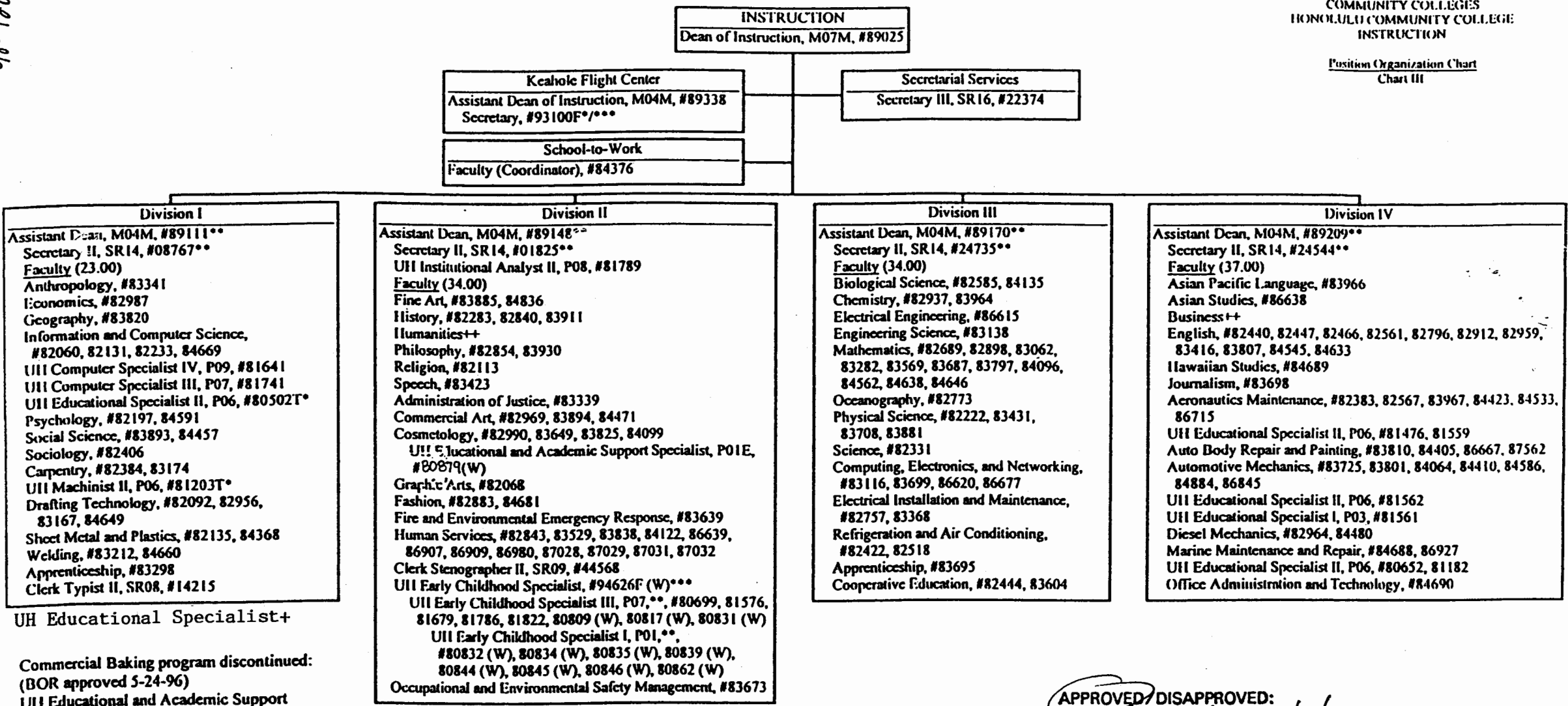
- * Temporary Position
- ** Rotating Position
- *** Position to be established

- ++ Courses to be taught by lecturers as needed

	<u>Perm</u>	<u>Temp</u>
General Fund	146.00	3.00
(W) Revolving Funds	14.00	

6821-86

Position Organization Chart
Chart III



UH Educational Specialist+

Commercial Baking program discontinued:
(BOR approved 5-24-96)
UHI Educational and Academic Support
Specialist, P01, #80877 (W)

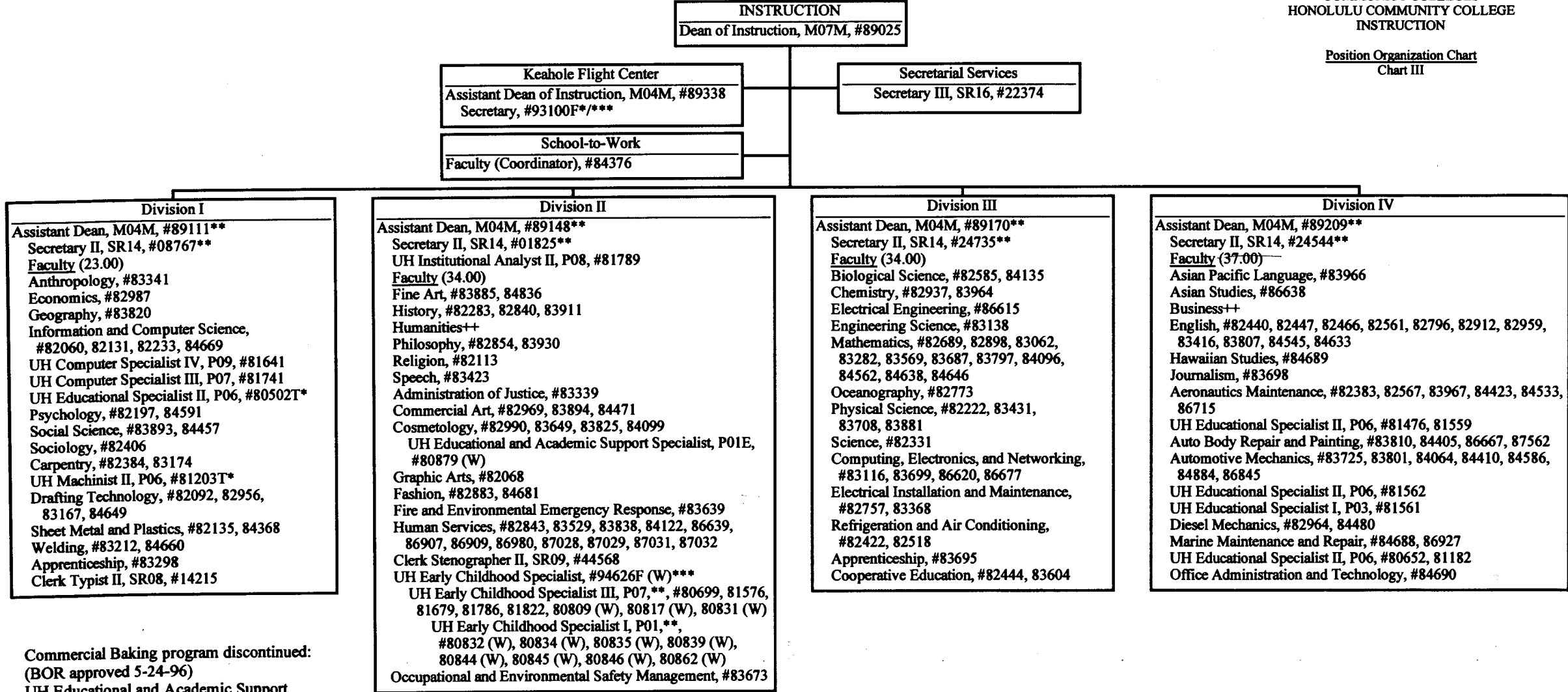
SUPERSEDED
Date FEB 18 1999

APPROVED/ DISAPPROVED:
[Signature] 1/20/98
SENIOR VICE PRESIDENT/ DATE
CHANCELLOR FOR COMMUNITY COLLEGES

- * Temporary Position
- ** Rotating Position
- *** Position to be established
- ++ Courses to be taught by lecturers as needed
- + Reallocated position count from UHM; to be redescribed; formally #11099, Secretary II (abolished).

	Perm	Temp
General Fund	157.00	3.00
(W) Revolving Funds	14.00	

Position Organization Chart
Chart III



Commercial Baking program discontinued:
(BOR approved 5-24-96)
UH Educational and Academic Support
Specialist, P01, #80877 (W)

CHART UPDATED
DATE JUL - 1 1998

SUPERSEDED
Date DEC 28 1998

[Signature] 07/01/98
~~DEAN OF INSTRUCTION~~
~~DEAN OF INSTRUCTION~~

	Perm	Temp
General Fund	156.00	3.00
(W) Revolving Funds	14.00	

- * Temporary Position
- ** Rotating Position
- *** Position to be established
- ++ Courses to be taught by lecturers as needed