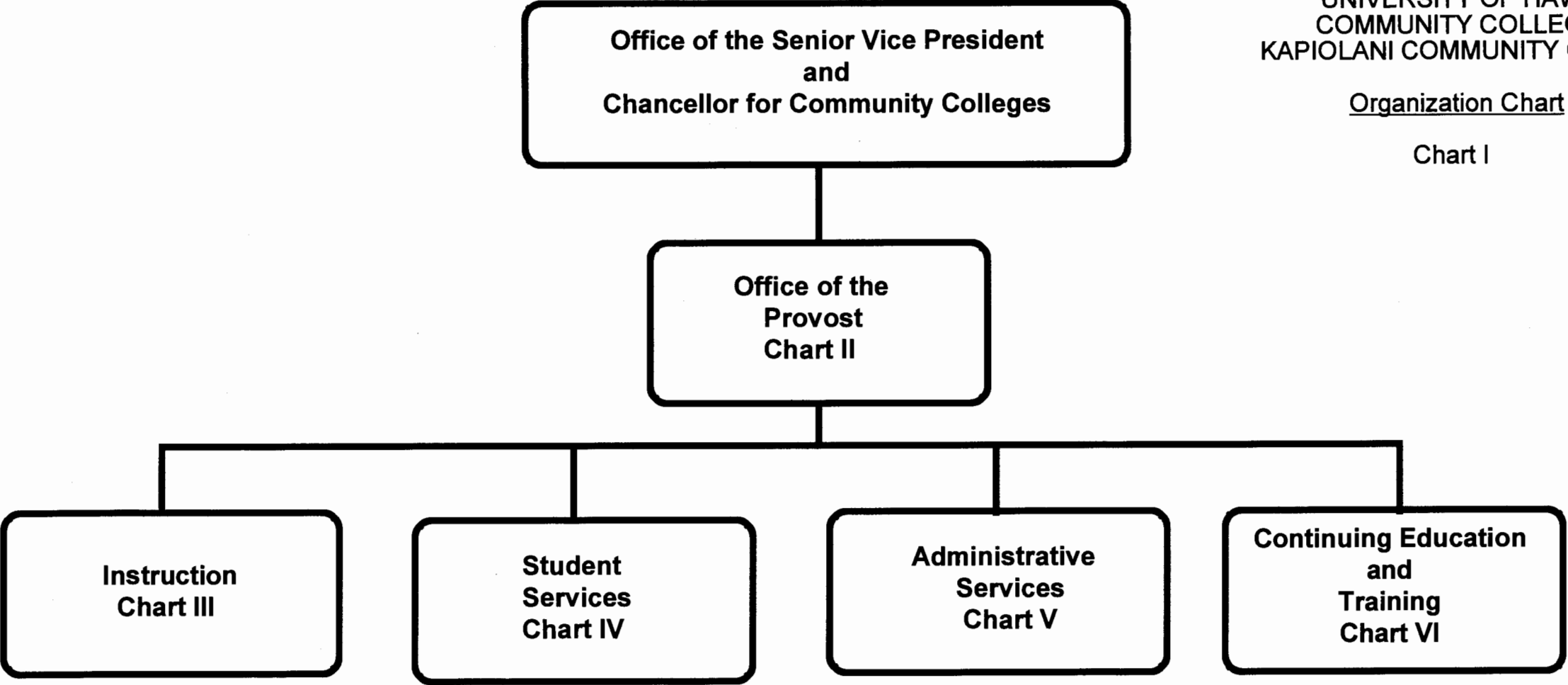


STATE OF HAWAII
UNIVERSITY OF HAWAII
COMMUNITY COLLEGES
KAPIOLANI COMMUNITY COLLEGE

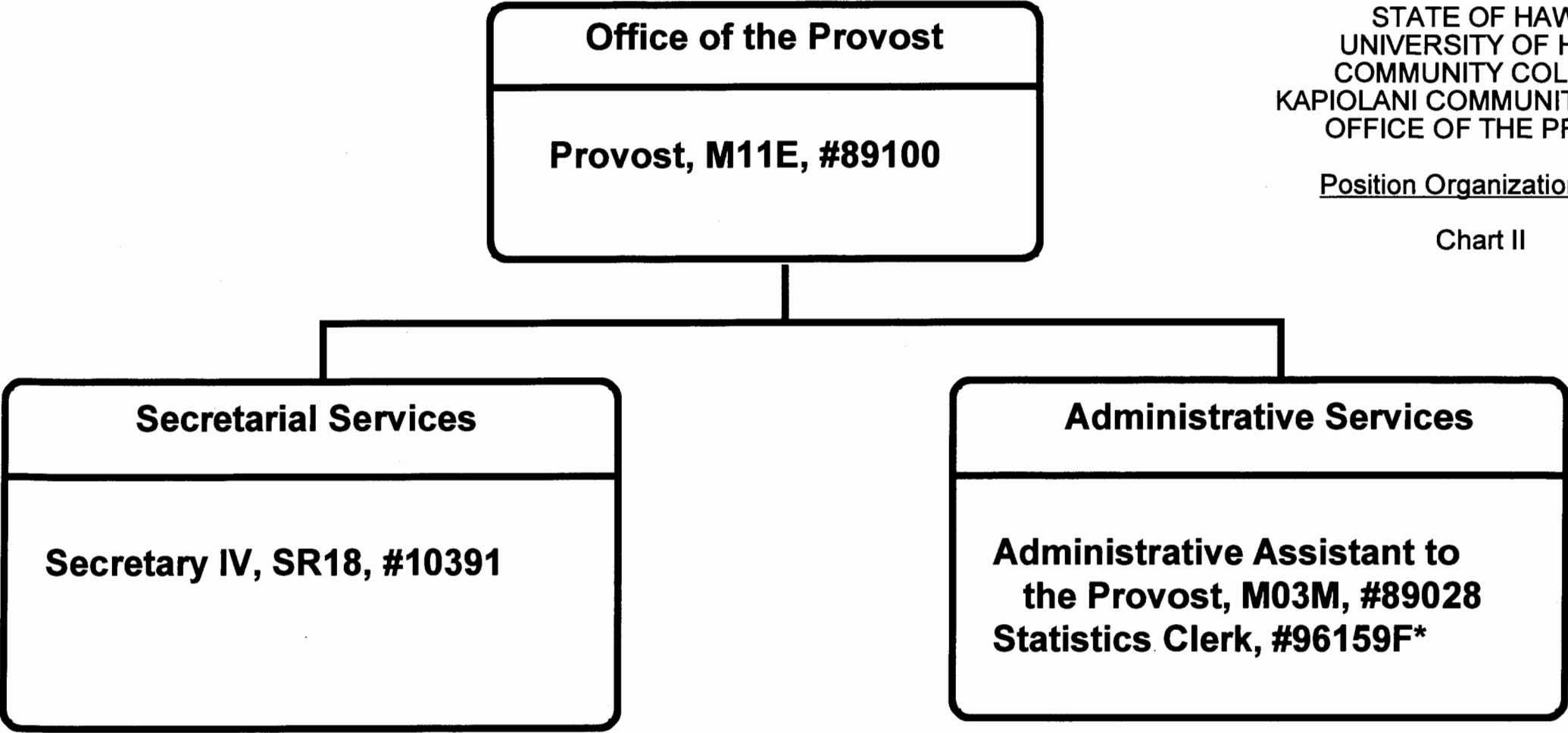
Organization Chart

Chart I



	<u>Perm</u>	<u>Temp</u>
General Fund	312.60	27.50
(W) Revolving Funds	6.00	
(B) Special Funds	18.00	

CHART UPDATED
DATE JUL - 1 1998



STATE OF HAWAII
UNIVERSITY OF HAWAII
COMMUNITY COLLEGES
KAPIOLANI COMMUNITY COLLEGE
OFFICE OF THE PROVOST

Position Organization Chart

Chart II

*Temporary position

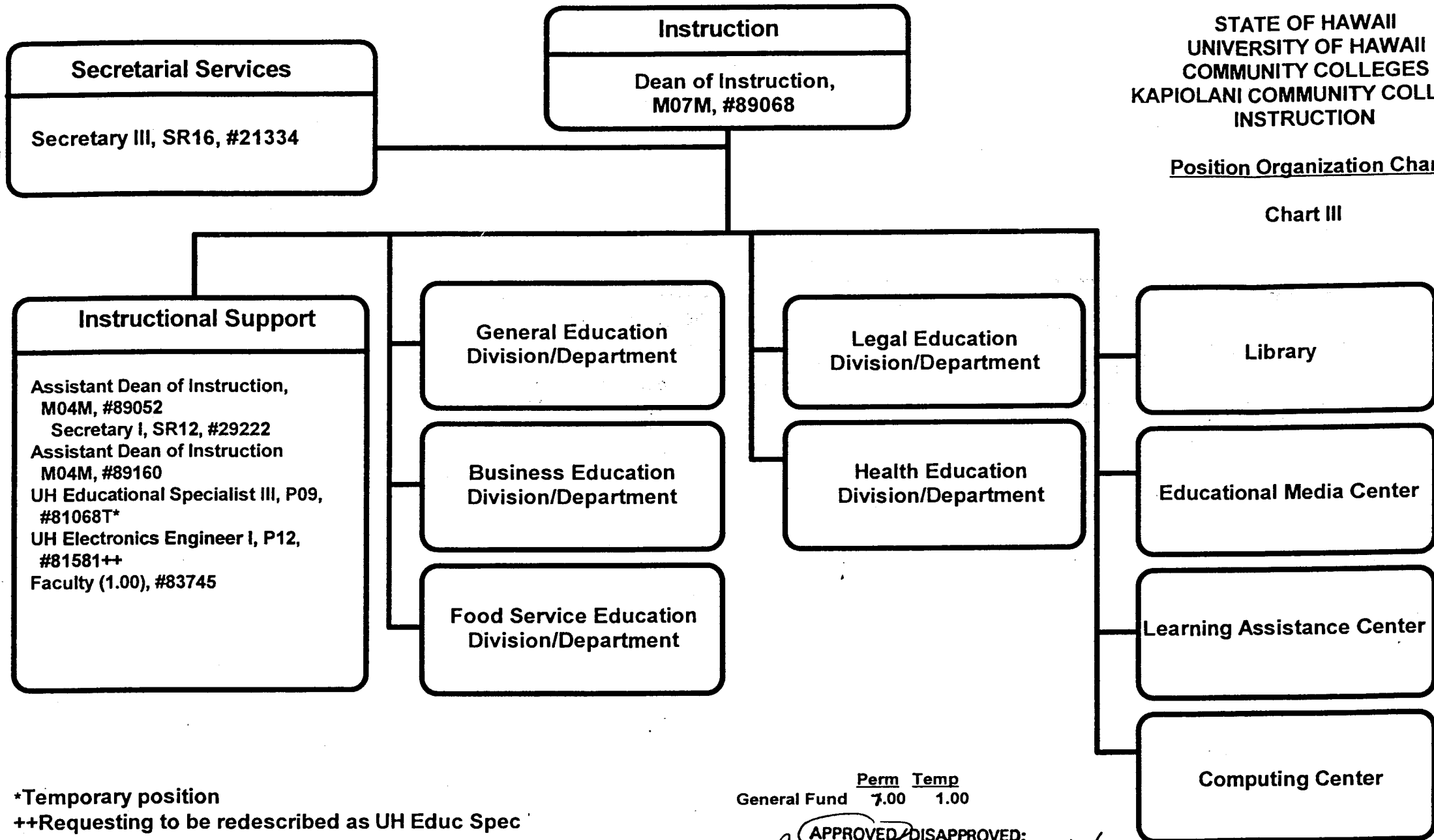
— General Fund Perm Temp
 3.00 1.00

CHART UPDATED
DATE JUL - 1 1998

STATE OF HAWAII
UNIVERSITY OF HAWAII
COMMUNITY COLLEGES
KAPIOLANI COMMUNITY COLLEGE
INSTRUCTION

Position Organization Chart

Chart III



*Temporary position

++Requesting to be redescribed as UH Educ Spec

	Perm	Temp
General Fund	7.00	1.00

APPROVED/ DISAPPROVED:
[Signature] 12/17/98

SENIOR VICE PRESIDENT/ DATE
CHANCELLOR FOR COMMUNITY COLLEGES

STATE OF HAWAII
UNIVERSITY OF HAWAII
COMMUNITY COLLEGES
KAPIOLANI COMMUNITY COLLEGE
INSTRUCTION

Position Organization Chart

Chart III A

	<u>Perm</u>	<u>Temp</u>
General Fund	94.00	9.00

APPROVED/DISAPPROVED:
J. S. Freeman 3/2/99

SENIOR VICE PRESIDENT/ DATE
CHANCELLOR FOR COMMUNITY COLLEGES

General Education Division/Department

Social Sciences

Chairperson**

Faculty (11.00)

Full-time: #82152, #82706, #82935, #83492, #83560, #83642, #84972, #84973, #86599,
#86938, #87403

Language Arts

Chairperson**

Faculty (31.00)

Full-time: #82178, #82232, #82555, #82653, #82776, #83123, #83308, #83447, #83521, #83559,
#83783, #83795, #83810, #83870, #83903, #84327, #84409, #84623, #86594, #86595,
#86596, #86604, #86798, #86803, #86960, #86945, #87084T*, #87143T*, #87583T*, #87612T*

Part-time: #82540 (.50), #86799 (.50)

Mathematics/Science

Chairperson**

Faculty (27.00)

Full-time: #82031, #82394, #82492, #82910, #82981, #83096, #83262, #83357, #83688, #83733,
#83939, #83974, #84458, #84836, #86592, #86593, #86600, #86606, #86718, #86754,
#86827, #86830, #86845, #86959, #87401, #86947T*, #88032T*

UH Educational Specialist I, P03, #81246

Humanities

Chairperson**

Faculty (29.00)

Full-time: #82052, #82068, #82135, #82231, #82447, #82429, #82607, #82631, #82803, #82840,
#82876, #82925, #82937, #82983, #83094, #83809, #83967, #84470, #84882, #84971,
#84974, #86602, #86809, #86937, #87402, #87404, #86696T*, #87072T*, #87074T*

General Education, Clerical Staff****

Secretary II, SR14, #22313

Clerk-Typist II, SR08, #26658, #22310, #47612 (.50), #47900 (.50)

* Temporary position

**Chairperson is appointed from among faculty positions within the department.

****Clerical staff serves all four General Education Departments--Social Sciences, Language Arts, Mathematics/Science, and Humanities.

2/16/99

Business Education Division/Department

Chairperson**

Secretary II, SR14, #22312

Faculty (17.00)

Full-time: #82026, #82066, #82218, #82348, #82389,
#82503, #82728, #82795, #82931, #83221,
#83734, #84150, #84337, #84369, #86591,
#86598, #87123


**Chairperson is appointed from among faculty positions within the department.

STATE OF HAWAII
UNIVERSITY OF HAWAII
COMMUNITY COLLEGES
KAPIOLANI COMMUNITY COLLEGE
INSTRUCTION

Position Organization Chart

Chart III B

General Fund Perm
18.00

APPROVED/DISAPPROVED:


SENIOR VICE PRESIDENT/ DATE
CHANCELLOR FOR COMMUNITY COLLEGES

**Food Service and Hospitality Education
Division/Department**

Chairperson**

Secretary II, SR14, #16962

Cook III, WS 08, #22318 (W), #32863 (W)

Snack Bar Cashier, SR06, #22319 (W)

UH Educational & Academic Support Specialist, P01,
#81304 (W), #81420 (W), #81422 (W)

Faculty (16.00)

Full-time: #82467, #82683, #82970, #83133, #83225, #83460,
#83684, #83901, #84091, #84103, #84304, #84539,
#86597, #86670, #86719, #86741

**Chairperson is appointed from among faculty positions within the department.

**STATE OF HAWAII
UNIVERSITY OF HAWAII
COMMUNITY COLLEGES
KAPIOLANI COMMUNITY COLLEGE
INSTRUCTION**

Position Organization Chart

Chart III C

	<u>Perm</u>
General Fund	17.00
(W) Revolving Funds	6.00

APPROVED/DISAPPROVED:
 **DATE** 4/18/19
**SENIOR VICE PRESIDENT/
CHANCELLOR FOR COMMUNITY COLLEGES**

Legal Education Division/Department

Chairperson**

Secretary II, SR14, #18092

Faculty (3.50)

Full-time: #82380, #83071, #83360

Part-time: #84370 (.50)

**Chairperson is appointed from among faculty positions within the department.

STATE OF HAWAII
UNIVERSITY OF HAWAII
COMMUNITY COLLEGES
KAPIOLANI COMMUNITY COLLEGE
INSTRUCTION

Position Organization Chart

Chart III D

	<u>Perm</u>
General Fund	4.50

CHART UPDATED

DATE JUL - 1 1998

Health Education Division/Department

Health Sciences

Chairperson**

Secretary II, SR14, #32952

Clerk-Steno II, SR09, #40964 (.50)

Faculty (15.10)

Full-time: #82121, #82162, #82405, #82576, #83310, #83321, #83667, #84223, #84326, #85821, #86384, #86385, #86752, #86882, #86886

Part-time: #87052 (.10)

Nursing

Chairperson**

Secretary II, SR14, #18093

Clerk-Typist II, SR08, #42015

Faculty (30.50)

Full-time: #82064, #82244, #82513, #84487, #84629, #84655, #86737, #86738, #86740, #86742, #86743, #86746, #86747, #86749, #86750, #86751, #86774, #86776, #86777, #86778, #86832, #86833, #86834, #86836, #86837, #86838, #86839, #86840

Part-time: #84308 (.50), #86736 (.50), #86739 (.50), #88072 (.50), #88074 (.50)

Emergency Medical Services

Chairperson**

Secretary II, SR14, #37300

Clerk-Typist II, SR08, #35641

Oahu Faculty (6.50)

Full-time: #86705, #86807, #86808, #87047, #87110, #87440

Part-time: #97663F*** (.25), #97657F*** (.25)

Hawaii Faculty (2.00)

Full-time+: #84739, #84740

Clerk-Typist II, SR08, #33867

Kauai Faculty (1.00)

Full-time: #84754

Clerk-Typist II, SR08, #33868 (.50)

Maul Faculty (2.00)

Full-time+: #85871, #88040

Clerk-Typist II, SR08, #33866 (.50)

**Chairperson is appointed from among faculty positions within the department.

***Position to be established.

+One supervisor is assigned from among the faculty positions within the island.

STATE OF HAWAII UNIVERSITY OF HAWAII COMMUNITY COLLEGES KAPIOLANI COMMUNITY COLLEGE INSTRUCTION

Position Organization Chart

Chart III E

	<u>Perm</u>
General Fund	64.60

APPROVED/DISAPPROVED:

Jay P. Iacumala 4/13/99

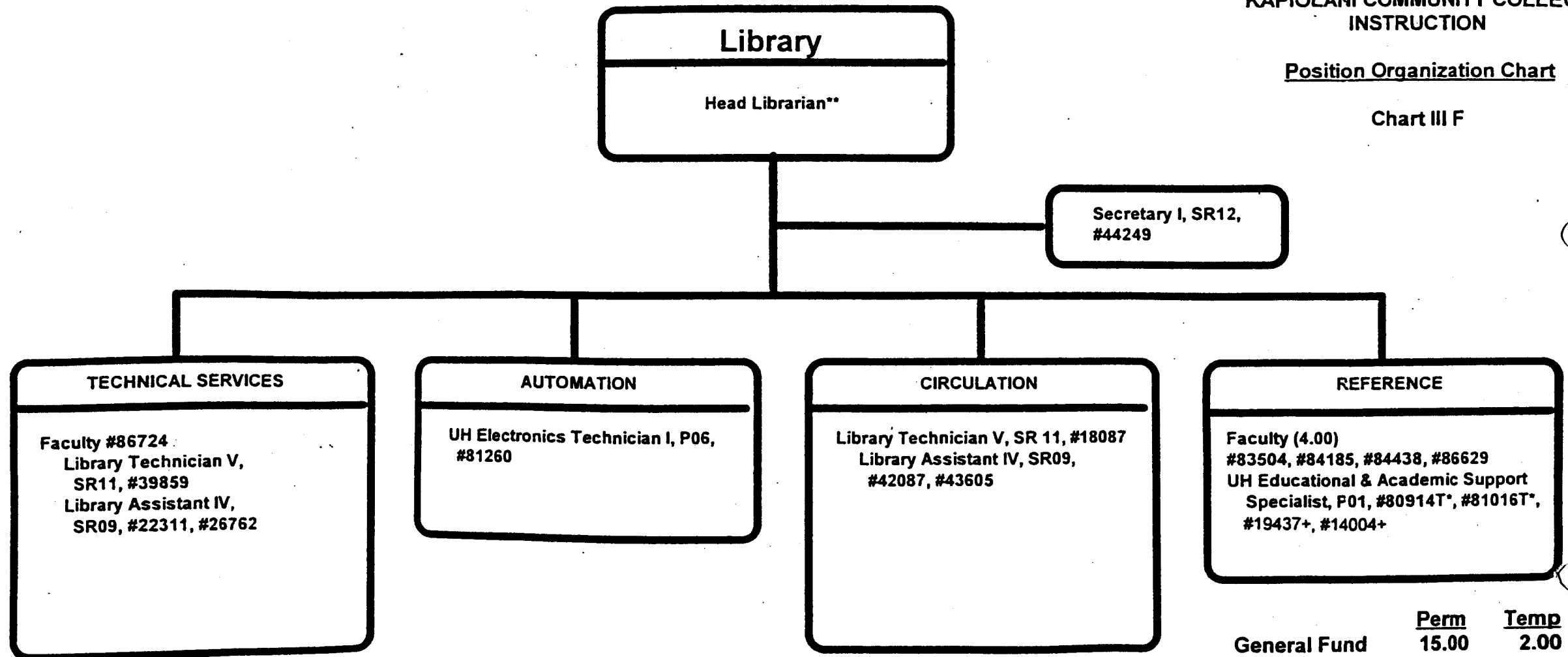
SENIOR VICE PRESIDENT / DATE
CHANCELLOR FOR COMMUNITY COLLEGES

3/11/99

STATE OF HAWAII
UNIVERSITY OF HAWAII
COMMUNITY COLLEGES
KAPIOLANI COMMUNITY COLLEGE
INSTRUCTION

Position Organization Chart

Chart III F



- * Temporary position
- **Unit Head is appointed from among faculty positions within the unit.
- + Reallocated from UHM; to be redescribed

APPROVED/DISAPPROVED:
Michael D. [Signature] 5/26/99

SENIOR VICE PRESIDENT/
CHANCELLOR FOR COMMUNITY COLLEGES

Educational Media Center

Unit Head**

- Faculty #82386, #87603
- UH Electronic Engineer I, P12, #81069
- UH Computer Specialist III, P07, #81654
- UH Electronic Technician II, P09, #80034
- UH Electronic Technician I, P06, #81277
- Audio Visual Technician I, BC07, #47350 (.50)
- UH Media Specialist III, P07, #80694
- UH Graphic Artist II, P05, #81060
- Offset Press Operator III, BC09, #39797
- Offset Press Operator II, BC08, #47346 (.50)
- Clerk-Steno III, SR11, #21321
- Clerk-Typist II, SR08, #42014*
- Library Assistant III, SR07, #48451***

* Temporary position
**Unit Head is appointed from among faculty positions within the unit.
***Subject position reallocated from Library, pending redescription to Clerk Typist.


STATE OF HAWAII
UNIVERSITY OF HAWAII
COMMUNITY COLLEGES
KAPIOLANI COMMUNITY COLLEGE
INSTRUCTION

Position Organization Chart

Chart III G

	<u>Perm</u>	<u>Temp</u>
General Fund	12.00	1.00

APPROVED/DISAPPROVED:



SENIOR VICE PRESIDENT/
CHANCELLOR FOR COMMUNITY COLLEGES

DATE

5/3/99

Learning Assistance Center

Unit Head**

Faculty (4.50)

Full-time: #84072, #86758, #87120, #87144T*

Part-time: #86757 (.50)

Clerk-Typist II, SR08, #14214

*Temporary position

**Unit Head is appointed from among faculty positions at the College.

STATE OF HAWAII
UNIVERSITY OF HAWAII
COMMUNITY COLLEGES
KAPIOLANI COMMUNITY COLLEGE
INSTRUCTION

Position Organization Chart

Chart III H

	<u>Perm</u>	<u>Temp</u>
General Fund	4.50	1.00

CHART UPDATED

DATE JUL - 1 1998

Computing Center

UH Computer Specialist V, P11, #81384
UH Computer Specialist IV, P09, #80529
UH Computer Specialist III, P07, #80340
UH Educational Specialist II, P06, #80351, #81220T*
UH Computer Specialist #17601+

* Temporary position

+ Reallocated from UHM; to be redescribed

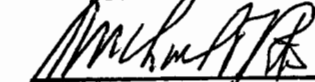
STATE OF HAWAII
UNIVERSITY OF HAWAII
COMMUNITY COLLEGES
KAPIOLANI COMMUNITY COLLEGE
INSTRUCTION

Position Organization Chart

Chart III I

	<u>Perm</u>	<u>Temp</u>
General Fund	5.00	1.00

APPROVED/DISAPPROVED:



MAY 25 1999

SENIOR VICE PRESIDENT/
CHANCELLOR FOR COMMUNITY COLLEGES

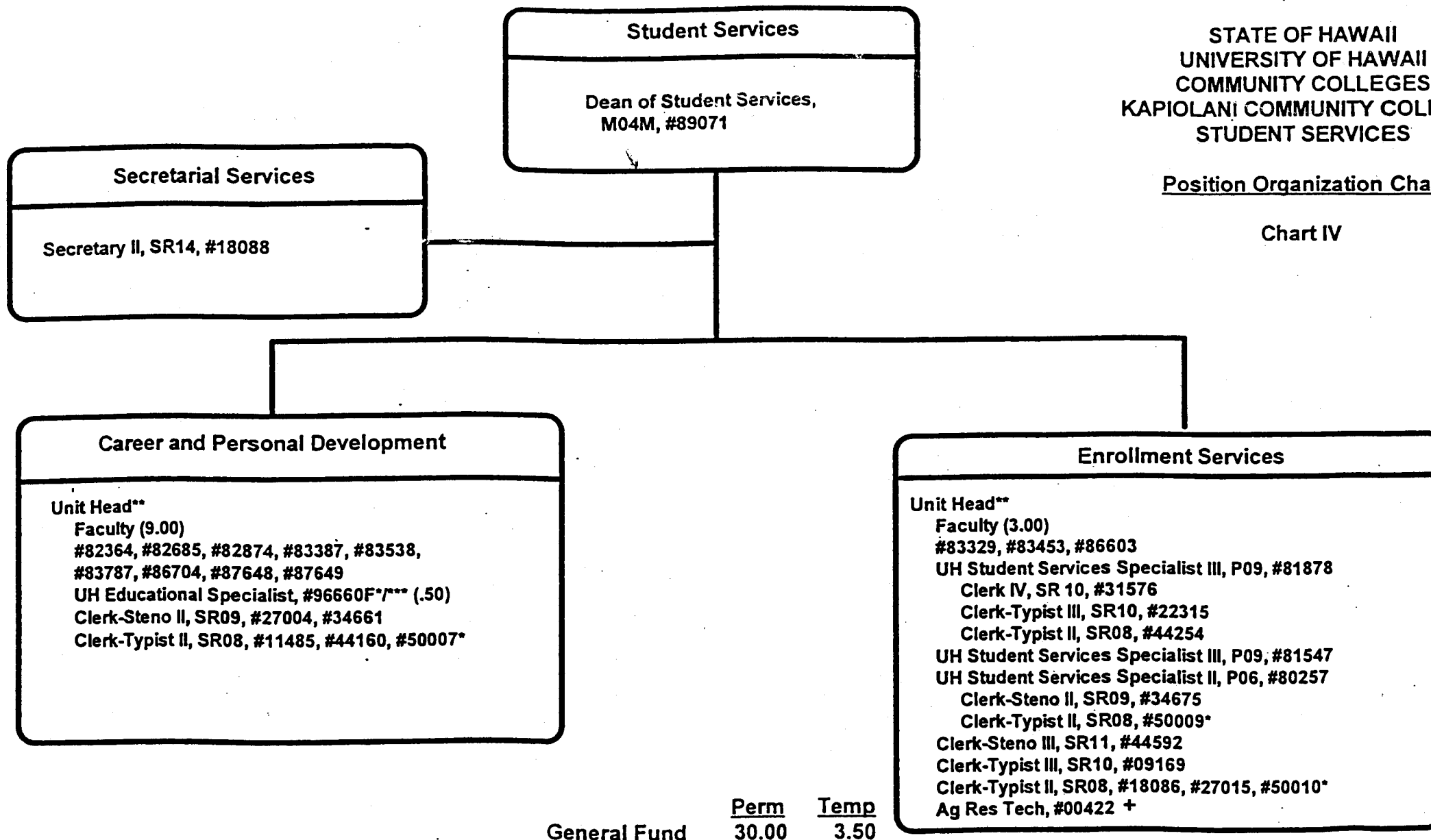
DATE

4/29/99

STATE OF HAWAII
UNIVERSITY OF HAWAII
COMMUNITY COLLEGES
KAPIOLANI COMMUNITY COLLEGE
STUDENT SERVICES

Position Organization Chart

Chart IV



*Temporary position

**Unit Head appointed from faculty positions within the department.

***Position to be established.

+ Reallocated from UHM; to be established as Clerk Typist

APPROVED/DISAPPROVED:

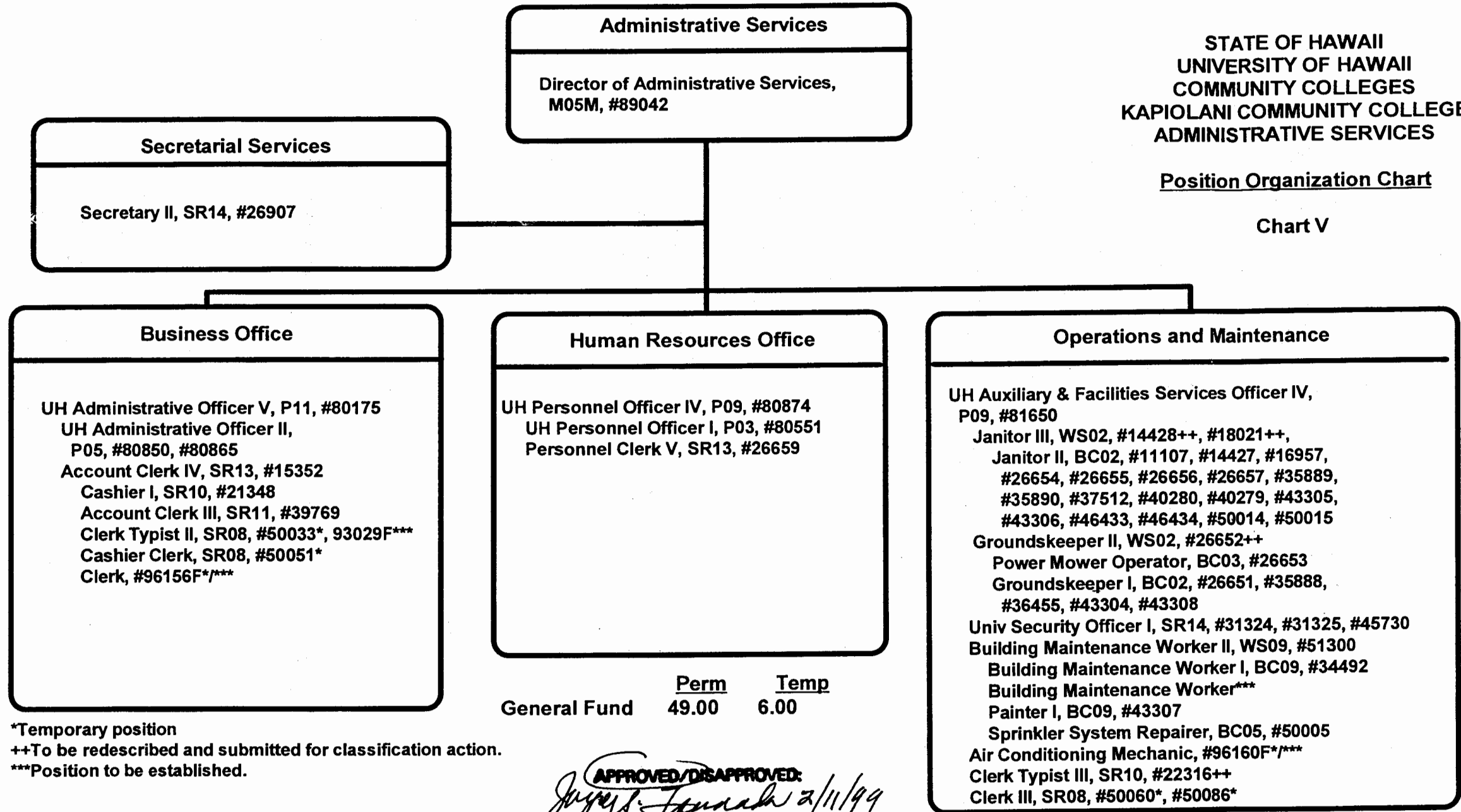
Michael TRA 5/25/99
SENIOR VICE PRESIDENT/ DATE
CHANCELLOR FOR COMMUNITY COLLEGES

4/27/99

STATE OF HAWAII
UNIVERSITY OF HAWAII
COMMUNITY COLLEGES
KAPIOLANI COMMUNITY COLLEGE
ADMINISTRATIVE SERVICES

Position Organization Chart

Chart V



*Temporary position

++To be redescribed and submitted for classification action.

***Position to be established.

	<u>Perm</u>	<u>Temp</u>
General Fund	49.00	6.00

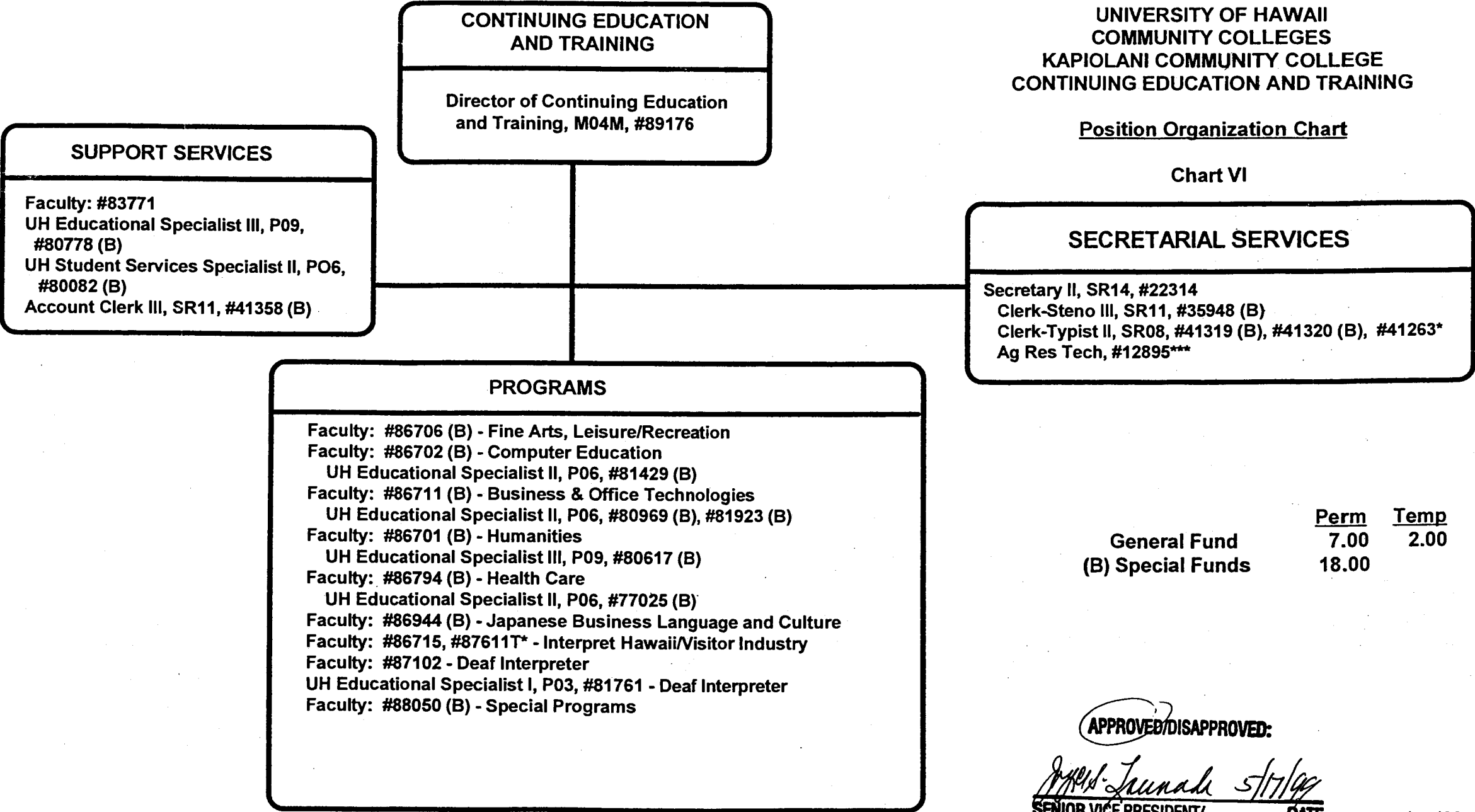
APPROVED/DISAPPROVED:
Joyce S. Fendall 2/11/99

SENIOR VICE PRESIDENT/ DATE
CHANCELLOR FOR COMMUNITY COLLEGES

STATE OF HAWAII
UNIVERSITY OF HAWAII
COMMUNITY COLLEGES
KAPIOLANI COMMUNITY COLLEGE
CONTINUING EDUCATION AND TRAINING

Position Organization Chart

Chart VI



	Perm	Temp
General Fund	7.00	2.00
(B) Special Funds	18.00	

APPROVED/DISAPPROVED:

[Signature] 5/17/99

SENIOR VICE PRESIDENT/ CHANCELLOR FOR COMMUNITY COLLEGES
DATE

*Temporary position
***Abolished position transferred from Manoa, to be established as Clerk Typist II.

Computing Center

UH Computer Specialist V, P11, #81384
UH Computer Specialist IV, P09, #80529
UH Computer Specialist III, P07, #80340
UH Educational Specialist II, P06, #80351, #81220T*

* Temporary position

STATE OF HAWAII
UNIVERSITY OF HAWAII
COMMUNITY COLLEGES
KAPIOLANI COMMUNITY COLLEGE
INSTRUCTION

Position Organization Chart

Chart III I

	<u>Perm</u>	<u>Temp</u>
General Fund	4.00	1.00

SUPERSEDED

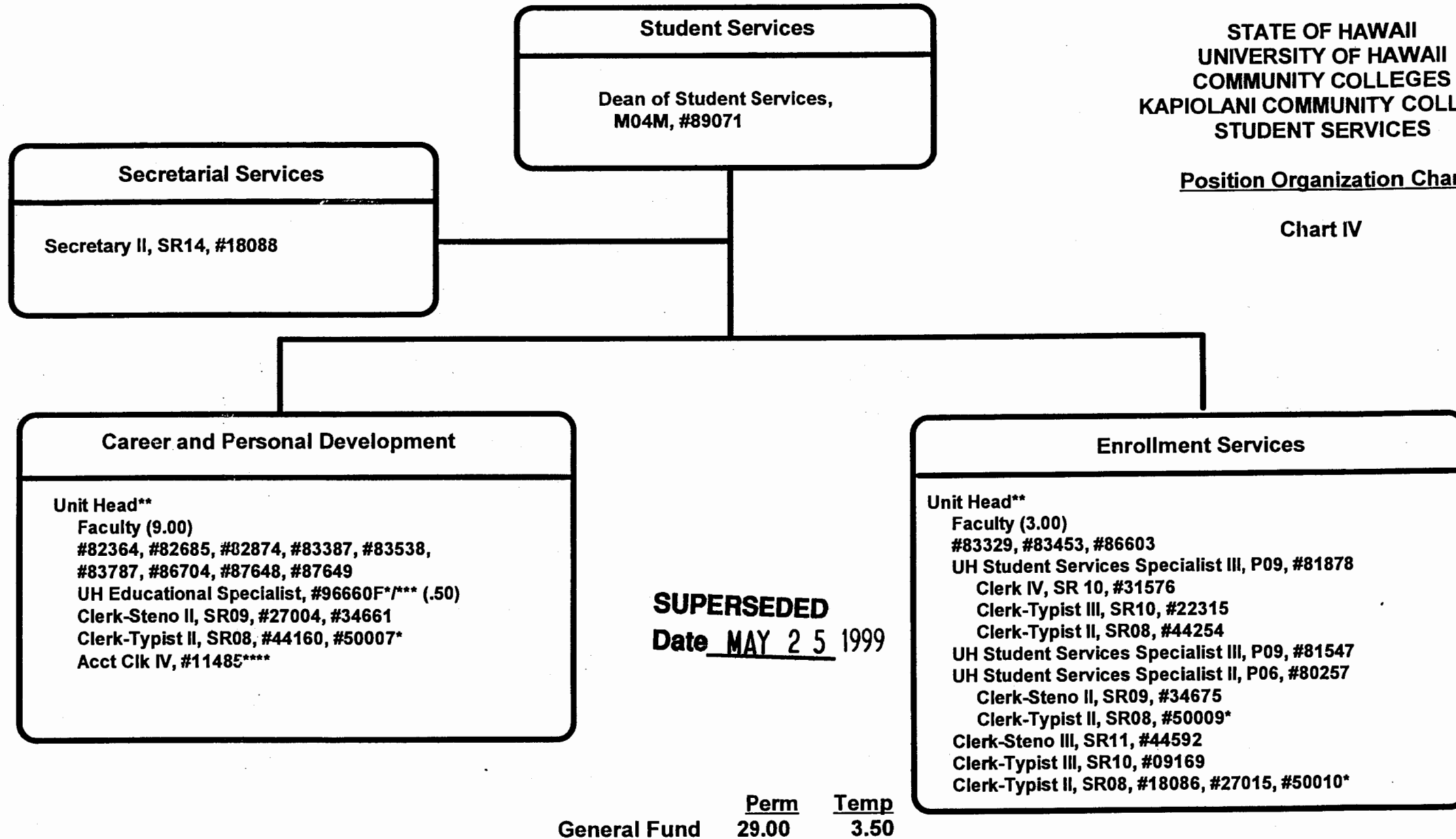
Date MAY 25 1999

CHART UPDATED
DATE JUL - 1 1998

STATE OF HAWAII
UNIVERSITY OF HAWAII
COMMUNITY COLLEGES
KAPIOLANI COMMUNITY COLLEGE
STUDENT SERVICES

Position Organization Chart

Chart IV



*Temporary position

**Unit Head appointed from faculty positions within the department.

Position to be established. *Trf from UHM, to be est as Clk-Typ II.

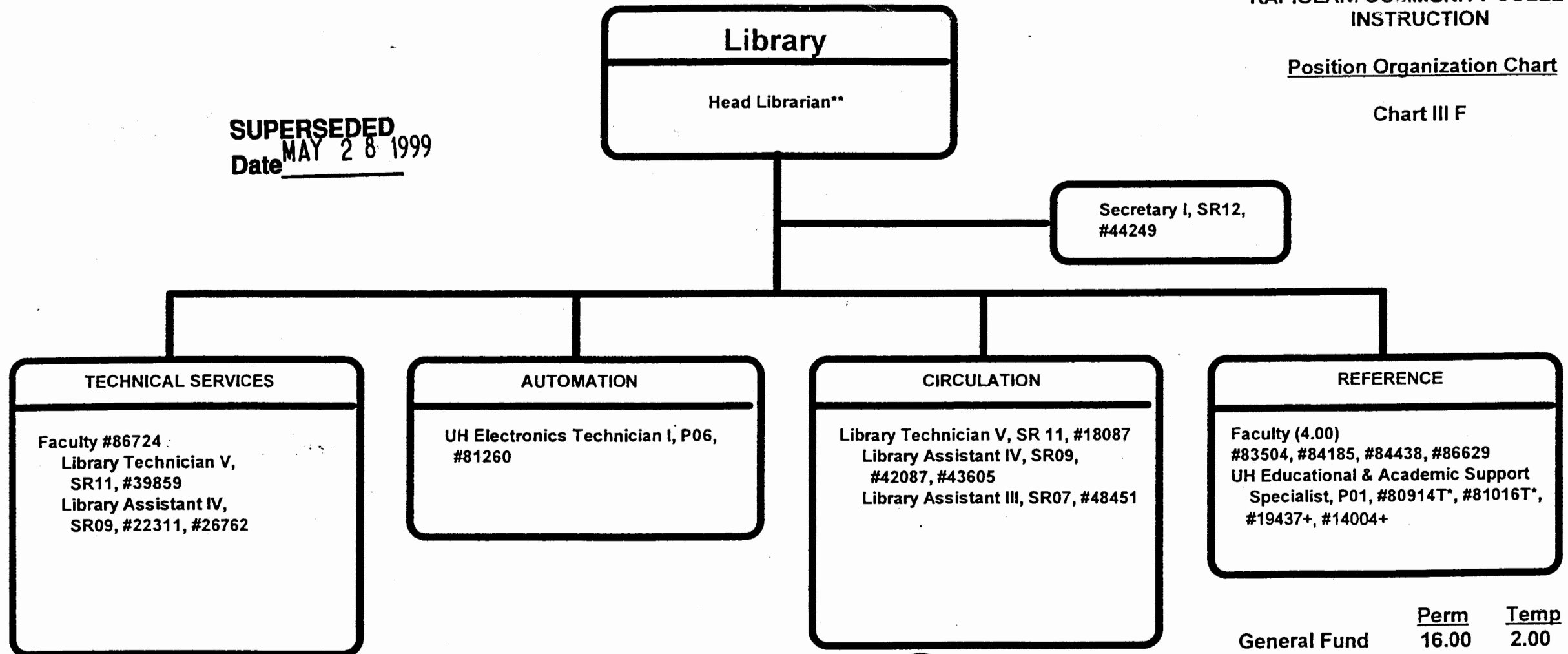
APPROVED/DISAPPROVED:
[Signature] 3/2/99
SENIOR VICE PRESIDENT / DATE
CHANCELLOR FOR COMMUNITY COLLEGES

STATE OF HAWAII
UNIVERSITY OF HAWAII
COMMUNITY COLLEGES
KAPIOLANI COMMUNITY COLLEGE
INSTRUCTION

Position Organization Chart

Chart III F

SUPERSEDED
Date MAY 28 1999



	<u>Perm</u>	<u>Temp</u>
General Fund	16.00	2.00

APPROVED/DISAPPROVED:

Jayce L. Isumada 5/19/99
SENIOR VICE PRESIDENT/
CHANCELLOR FOR COMMUNITY COLLEGES

* Temporary position

**Unit Head is appointed from among faculty positions within the unit.

+ Reallocated from UHM; to be redescribed

Educational Media Center

Unit Head**

Faculty #82386, #87603

UH Electronic Engineer I, P12, #81069

UH Computer Specialist III, P07, #81654

UH Electronic Technician II, P09, #80034

UH Electronic Technician I, P06, #81277

Audio Visual Technician I, BC07, #47350 (.50)

UH Media Specialist III, P07, #80694

UH Graphic Artist II, P05, #81060

Offset Press Operator III, BC09, #39797

Offset Press Operator II, BC08, #47346 (.50)

Clerk-Steno III, SR11, #21321

Clerk-Typist II, SR08, #42014*

* Temporary position

**Unit Head is appointed from among faculty positions within the unit.

STATE OF HAWAII
UNIVERSITY OF HAWAII
COMMUNITY COLLEGES
KAPIOLANI COMMUNITY COLLEGE
INSTRUCTION

Position Organization Chart

Chart III G

SUPERSEDED

Date MAY 28 1999

	<u>Perm</u>	<u>Temp</u>
General Fund	11.00	1.00

APPROVED/DISAPPROVED:

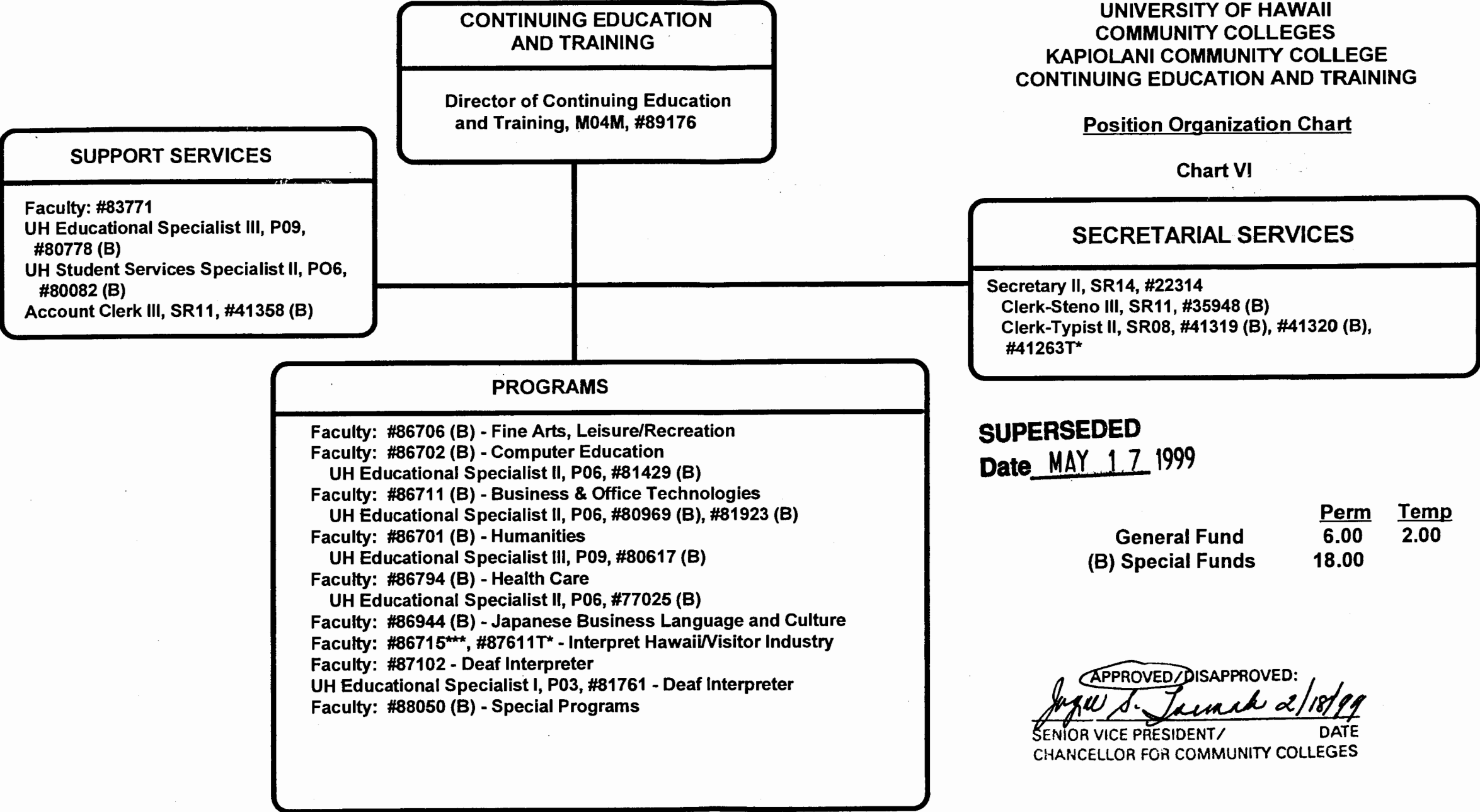
Joseph S. Iwamoto 12/17/98
SENIOR VICE PRESIDENT / DATE
CHANCELLOR FOR COMMUNITY COLLEGES

11/9/98

STATE OF HAWAII
UNIVERSITY OF HAWAII
COMMUNITY COLLEGES
KAPIOLANI COMMUNITY COLLEGE
CONTINUING EDUCATION AND TRAINING

Position Organization Chart

Chart VI



SUPERSEDED

Date MAY 17 1999

	<u>Perm</u>	<u>Temp</u>
General Fund	6.00	2.00
(B) Special Funds	18.00	

APPROVED/DISAPPROVED:
James S. Tamm 2/18/99

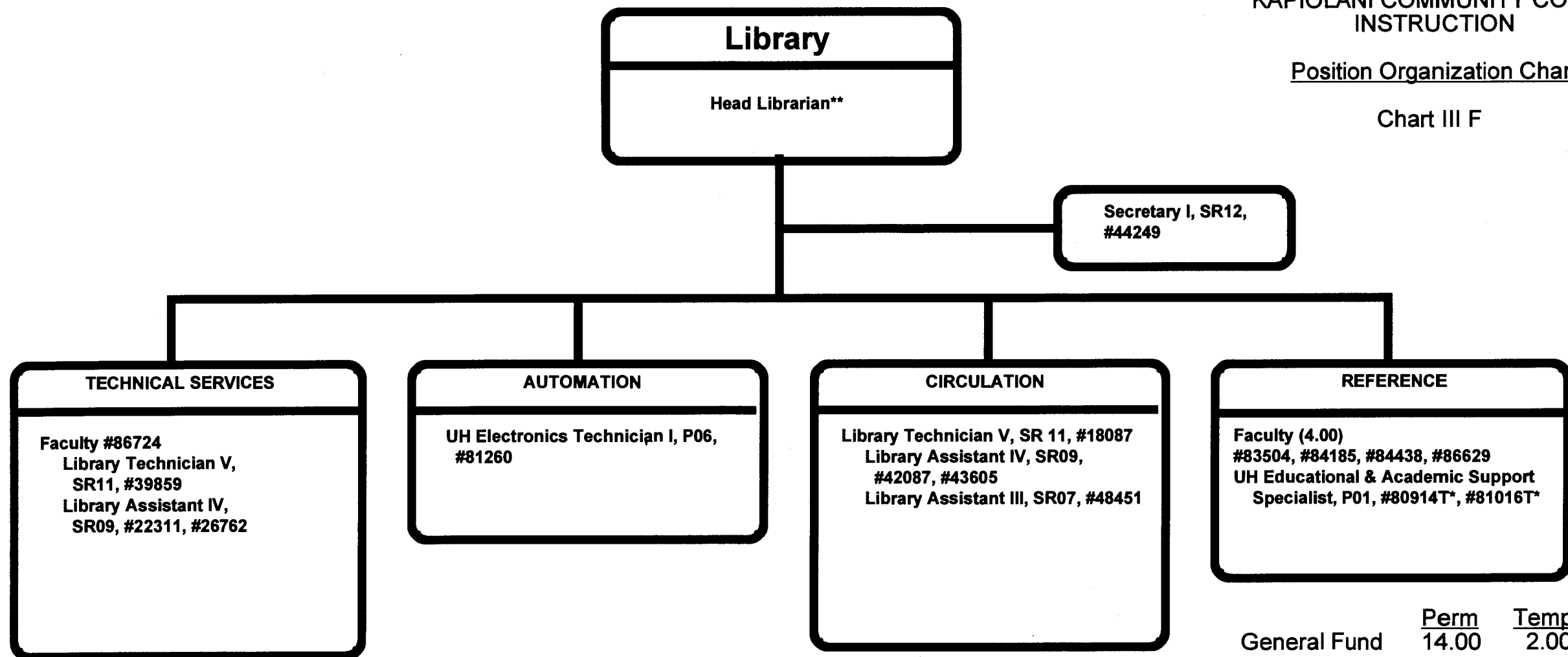
SENIOR VICE PRESIDENT/ DATE
CHANCELLOR FOR COMMUNITY COLLEGES

*Temporary position
***Position to be established

STATE OF HAWAII
UNIVERSITY OF HAWAII
COMMUNITY COLLEGES
KAPIOLANI COMMUNITY COLLEGE
INSTRUCTION

Position Organization Chart

Chart III F



* Temporary position

**Unit Head is appointed from among faculty positions within the unit.

SUPERSEDED

Date MAY 14 1999

CHART UPDATED

DATE JUL - 1 1998

Health Education Division/Department

Health Sciences

Chairperson**

Secretary II, SR14, #32952

Clerk-Steno II, SR09, #40964 (.50)

Faculty (15.10)

Full-time: #82121, #82162, #82405, #82576, #83310, #83321, #83667, #84223, #84326, #85821, #86384, #86385, #86752, #86882, #86886

Part-time: #87052 (.10)

Nursing

Chairperson**

Secretary II, SR14, #18093

Clerk-Typist II, SR08, #42015

Faculty (30.50)

Full-time: #82064, #82244, #82513, #84487, #84629, #84655, #86737, #86738, #86740, #86742, #86743, #86746, #86747, #86749, #86750, #86751, #86774, #86776, #86777, #86778, #86832, #86833, #86834, #86836, #86837, #86838, #86839, #86840

Part-time: #84308 (.50), #86736 (.50), #86739 (.50), #88072 (.50), #88074 (.50)

Emergency Medical Services

Chairperson**

Secretary II, SR14, #37300

Clerk-Typist II, SR08, #35641

Oahu Faculty (7.50)

Full-time: #86705, #86807, #86808, #86809, #87047, #87110, #87440

Part-time: #97663F*** (.25), #97657F*** (.25)

Hawaii Faculty (2.00)

Full-time+: #84739, #84740

Clerk-Typist II, SR08, #33867

Kauai Faculty (1.00)

Full-time: #84754

Clerk-Typist II, SR08, #33868 (.50)

Maul Faculty (2.00)

Full-time+: #85871, #88040

Clerk-Typist II, SR08, #33866 (.50)

**Chairperson is appointed from among faculty positions within the department.

***Position to be established.

+One supervisor is assigned from among the faculty positions within the island.

STATE OF HAWAII
UNIVERSITY OF HAWAII
COMMUNITY COLLEGES
KAPIOLANI COMMUNITY COLLEGE
INSTRUCTION


Position Organization Chart

Chart III E

SUPERSEDED

Date APR 13 1999

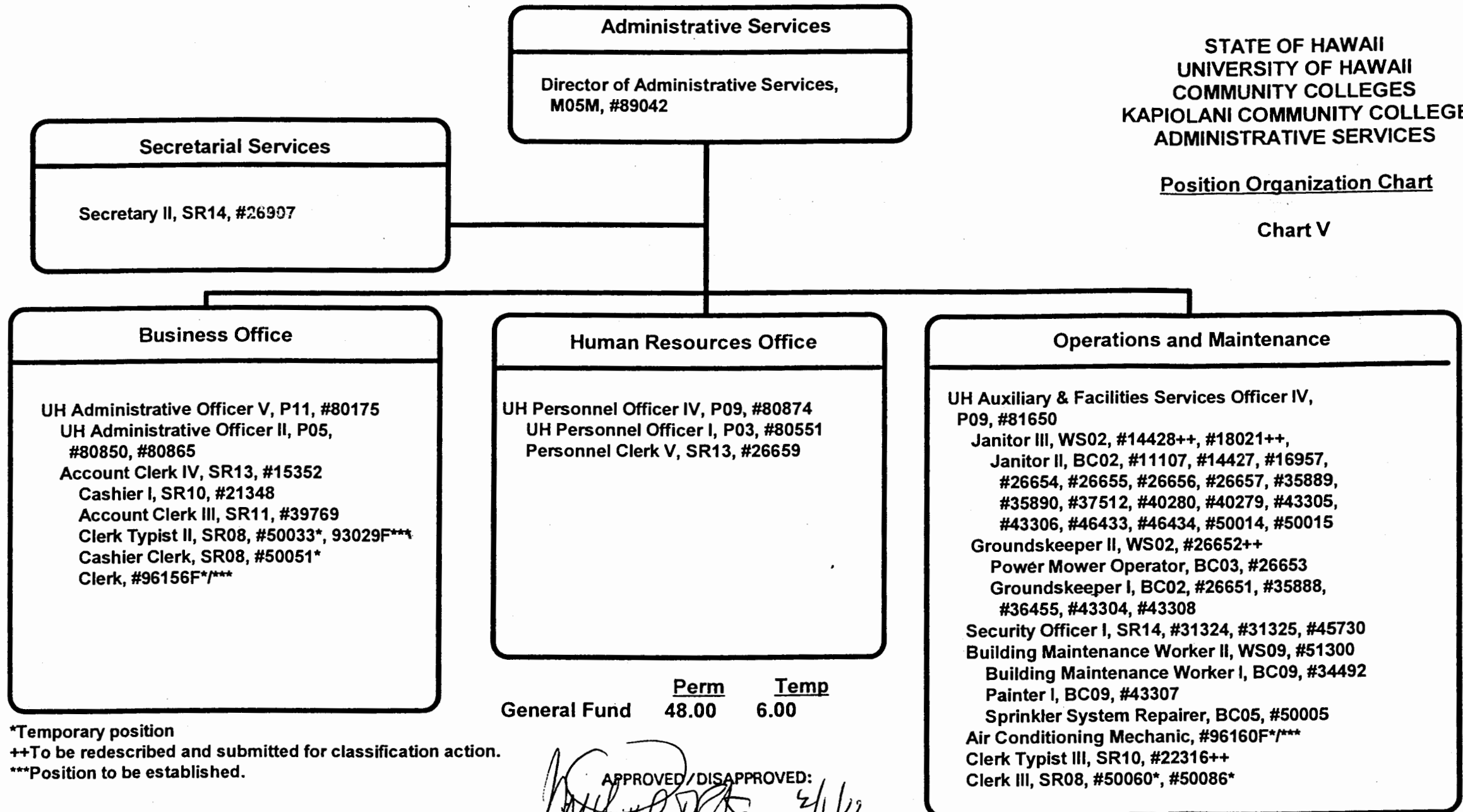
	<u>Perm</u>
General Fund	65.60

APPROVED/DISAPPROVED:

SENIOR VICE PRESIDENT/ **DATE**
CHANCELLOR FOR COMMUNITY COLLEGES

STATE OF HAWAII
UNIVERSITY OF HAWAII
COMMUNITY COLLEGES
KAPIOLANI COMMUNITY COLLEGE
ADMINISTRATIVE SERVICES

Position Organization Chart

Chart V



*Temporary position

++To be redescribed and submitted for classification action.

***Position to be established.

SUPERSEDED
Date FEB 11 1999

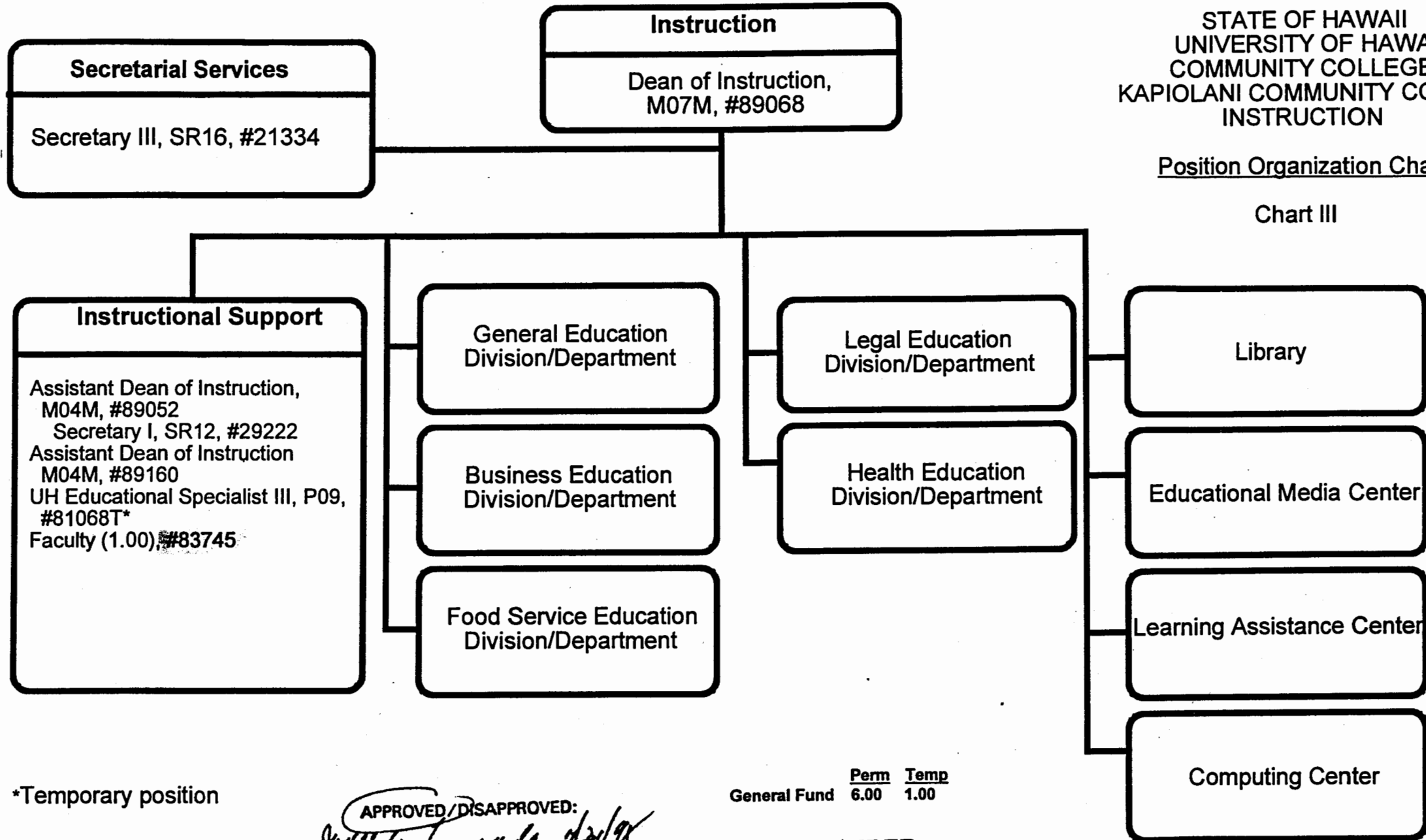
General Fund Perm Temp
48.00 6.00

APPROVED/DISAPPROVED:
[Signature] 2/1/99
DATE
SENIOR VICE PRESIDENT/
CHANCELLOR FOR COMMUNITY COLLEGES

STATE OF HAWAII
UNIVERSITY OF HAWAII
COMMUNITY COLLEGES
KAPIOLANI COMMUNITY COLLEGE
INSTRUCTION

Position Organization Chart

Chart III



*Temporary position

APPROVED/DISAPPROVED:
[Signature] 12/21/98
DATE
SENIOR VICE PRESIDENT/
CHANCELLOR FOR COMMUNITY COLLEGES

General Fund Perm Temp
 6.00 1.00

SUPERSEDED
Date DEC 17 1998

Educational Media Center

Unit Head**

- Faculty #82386, #87603
- UH Electronic Engineer I, P12, #81069, #81581
- UH Computer Specialist III, P07, #81654
- UH Electronic Technician II, P09, #80034
 - UH Electronic Technician I, P06, #81277
 - Audio Visual Technician I, BC07, #47350 (.50)
 - UH Media Specialist III, P07, #80694
- UH Graphic Artist II, P05, #81060
 - Offset Press Operator III, BC09, #39797
 - Offset Press Operator II, BC08, #47346 (.50)
- Clerk-Steno III, SR11, #21321
- Clerk-Typist II, SR08, #42014*

* Temporary position
**Unit Head is appointed from among faculty positions within the unit.

STATE OF HAWAII
UNIVERSITY OF HAWAII
COMMUNITY COLLEGES
KAPIOLANI COMMUNITY COLLEGE
INSTRUCTION

Position Organization Chart

Chart III G

	<u>Perm</u>	<u>Temp</u>
General Fund	12.00	1.00

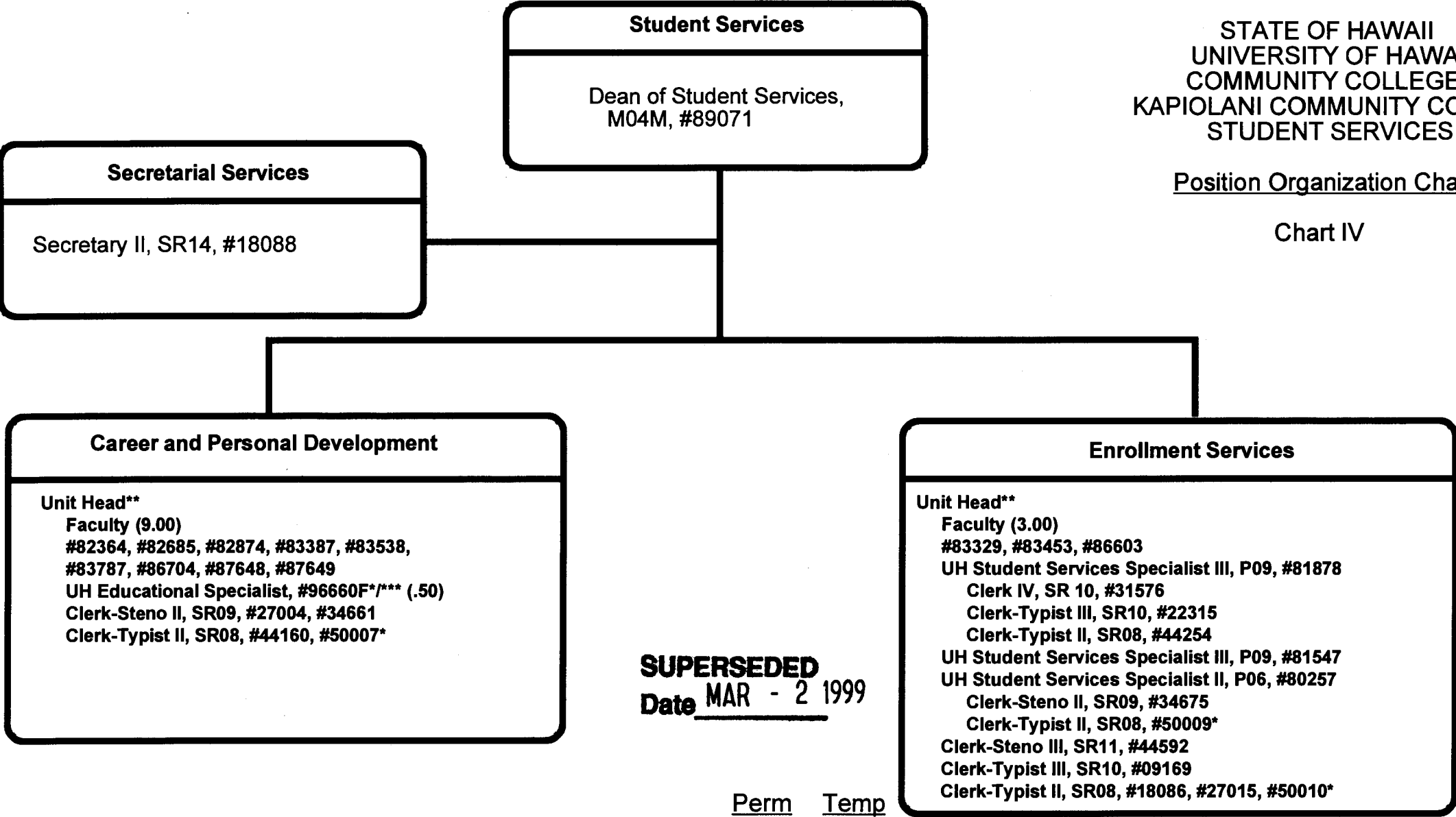
SUPERSEDED
Date DEC 17 1998

CHART UPDATED
DATE JUL - 1 1998

STATE OF HAWAII
UNIVERSITY OF HAWAII
COMMUNITY COLLEGES
KAPIOLANI COMMUNITY COLLEGE
STUDENT SERVICES

Position Organization Chart

Chart IV



SUPERSEDED
Date MAR - 2 1999

General Fund Perm Temp
28.00 3.50

*Temporary position
**Unit Head appointed from faculty positions within the department.
***Position to be established.

CHART UPDATED
DATE JUL - 1 1998

General Education Division/Department

Social Sciences

Chairperson**

Faculty (11.00)

Full-time: #82152, #82706, #82935, #83492, #83560, #83642, #84972, #84973, #86599,
#86938, #87403

Language Arts

Chairperson**

Faculty (30.00)

Full-time: #82178, #82232, #82555, #82653, #82776, #83123, #83308, #83447, #83521, #83559,
#83783, #83795, #83870, #83903, #84327, #84409, #84623, #86594, #86595, #86596,
#86604, #86798, #86803, #86960, #86945, #87084T*, #87143T*, #87583T*, #87612T*

Part-time: #82540 (.50), #86799 (.50)

Mathematics/Science

Chairperson**

Faculty (25.00)

Full-time: #82031, #82394, #82492, #82910, #82981, #83096, #83262, #83357, #83688, #83733,
#83939, #83974, #84458, #86592, #86593, #86600, #86606, #86718, #86754, #86827,
#86830, #86959, #87401, #86947T*, #88032T*

UH Educational Specialist I, P03, #81246

Humanities

Chairperson**

Faculty (22.00)

Full-time: #82052, #82231, #82429, #82607, #82631, #82803, #82876, #82925, #82983, #83094, #83809,
#84470, #84882, #84971, #84974, #86602, #86937, #87402, #87404, #86696T*, #87072T*,
#87074T*

General Education, Clerical Staff****

Secretary II, SR14, #22313

Clerk-Typist II, SR08, #26658, #22310, #47612 (.50), #47900 (.50)

* Temporary position

**Chairperson is appointed from among faculty positions within the department.

****Clerical staff serves all four General Education Departments—Social Sciences, Language Arts, Mathematics/Science, and Humanities.

STATE OF HAWAII
UNIVERSITY OF HAWAII
COMMUNITY COLLEGES
KAPIOLANI COMMUNITY COLLEGE
INSTRUCTION

Position Organization Chart

Chart III A

SUPERSEDED

Date MAR - 2 1999

	<u>Perm</u>	<u>Temp</u>
General Fund	84.00	9.00

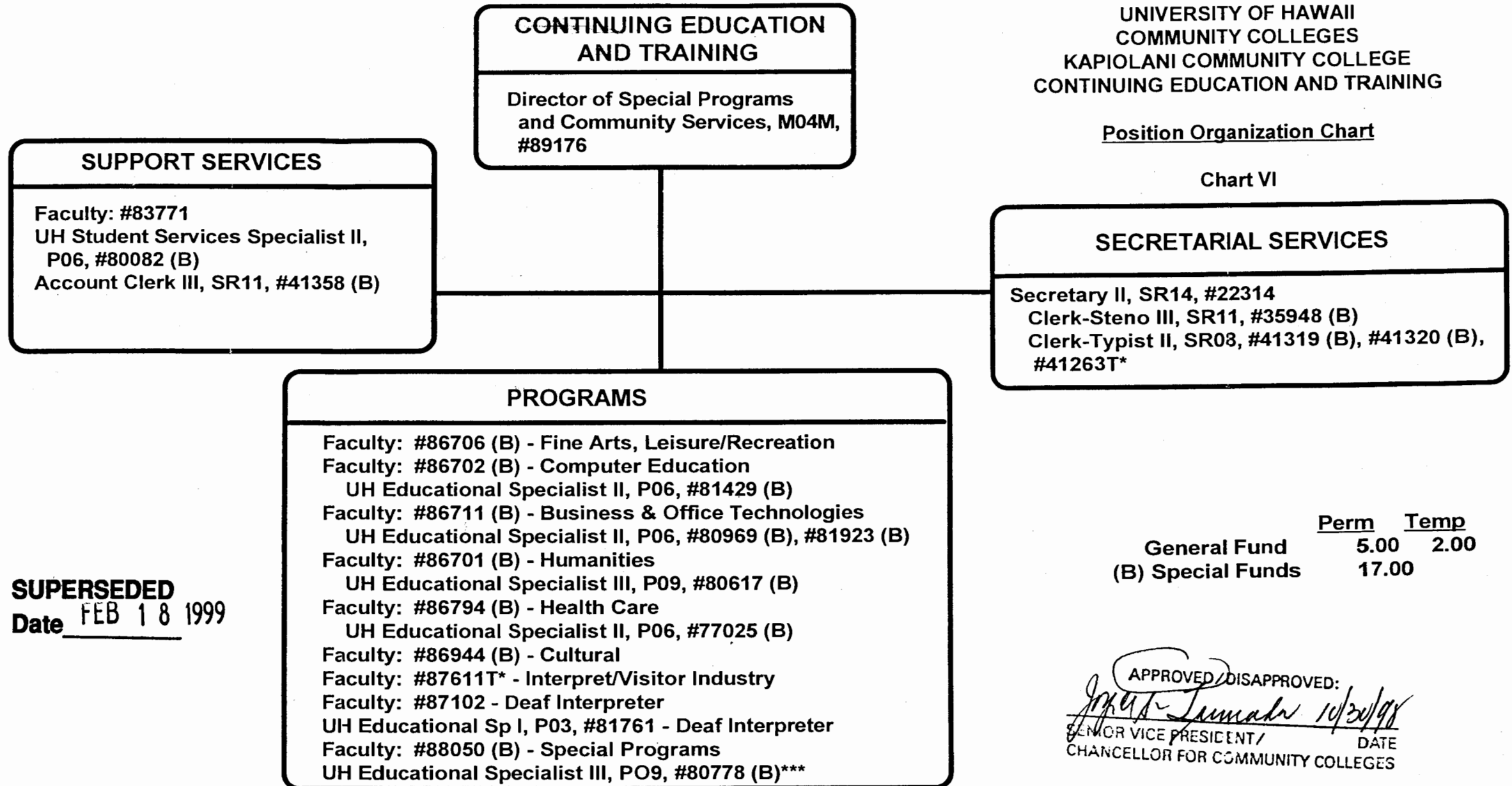
APPROVED/DISAPPROVED:


SENIOR VICE PRESIDENT/
CHANCELLOR FOR COMMUNITY COLLEGES
DATE 3/15/99

STATE OF HAWAII
UNIVERSITY OF HAWAII
COMMUNITY COLLEGES
KAPIOLANI COMMUNITY COLLEGE
CONTINUING EDUCATION AND TRAINING

Position Organization Chart

Chart VI



SUPERSEDED
Date FEB 18 1999

	<u>Perm</u>	<u>Temp</u>
General Fund	5.00	2.00
(B) Special Funds	17.00	

APPROVED/DISAPPROVED:
[Signature] 10/30/98
SENIOR VICE PRESIDENT / DATE
CHANCELLOR FOR COMMUNITY COLLEGES

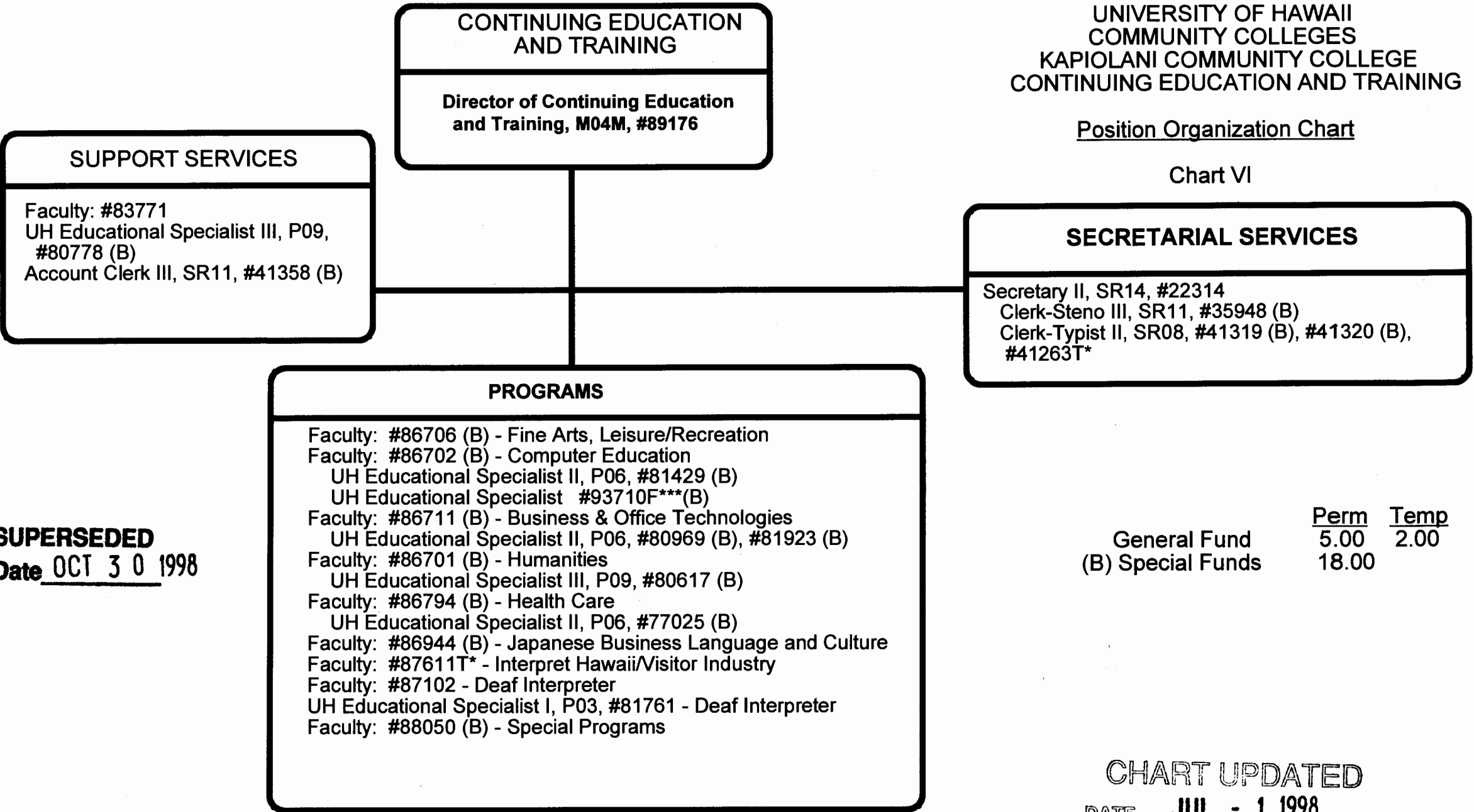
*Temporary position

***Requested position to be redescribed to UH Educ Spec II

STATE OF HAWAII
UNIVERSITY OF HAWAII
COMMUNITY COLLEGES
KAPIOLANI COMMUNITY COLLEGE
CONTINUING EDUCATION AND TRAINING

Position Organization Chart

Chart VI



	<u>Perm</u>	<u>Temp</u>
General Fund	5.00	2.00
(B) Special Funds	18.00	

CHART UPDATED
DATE JUL - 1 1998

SUPERSEDED
Date OCT 30 1998

*Temporary position
***Position to be established

STATE OF HAWAII
UNIVERSITY OF HAWAII
COMMUNITY COLLEGES
KAPIOLANI COMMUNITY COLLEGE
INSTRUCTION

Position Organization Chart

Chart III A

SUPERSEDED
Date JAN 15 1999

	<u>Perm</u>	<u>Temp</u>
General Fund	83.50	9.00

APPROVED: _____
DATE _____
KAPIOLANI COMMUNITY COLLEGES

General Education Division/Department

Social Sciences

Chairperson**

Faculty (11.00)

Full-time: #82152, #82706, #82935, #83492, #83560, #83642, #84972, #84973, #86599, #86938, #87403

Language Arts

Chairperson**

Faculty (30.00)

Full-time: #82178, #82232, #82555, #82653, #82776, #83123, #83308, #83447, #83521, #83559, #83783, #83795, #83870, #83903, #84327, #84409, #84623, #86594, #86595, #86596, #86604, #86798, #86803, #86960, #86945, #87084T*, #87143T*, #87583T*, #87612T*

Part-time: #82540 (.50), #86799 (.50)

Mathematics/Science

Chairperson**

Faculty (25.00)

Full-time: #82031, #82394, #82492, #82910, #82981, #83096, #83262, #83357, #83688, #83733, #83939, #83974, #84458, #86592, #86593, #86600, #86606, #86718, #86754, #86827, #86830, #86959, #87401, #86947T*, #88032T*

UH Educational Specialist I, P03, #81246

Humanities

Chairperson**

Faculty (22.00)

Full-time: #82052, #82231, #82429, #82607, #82631, #82803, #82876, #82925, #82983, #83094, #83809, #84470, #84882, #84971, #84974, #86602, #86937, #87402, #87404, #86696T*, #87072T*, #87074T*

General Education, Clerical Staff****

Secretary II, SR14, #22313

Clerk-Typist II, SR08, #26658, #22310, #47900 (.50)

* Temporary position

**Chairperson is appointed from among faculty positions within the department.

****Clerical staff serves all four General Education Departments--Social Sciences, Language Arts, Mathematics/Science, and Humanities.

Business Education Division/Department

Chairperson**

Secretary II, SR14, #22312

Clerk-Typist II, SR08, #47612 (.50)

Faculty (17.00)

Full-time: #82026, #82066, #82218, #82348, #82389,
#82503, #82728, #82795, #82931, #83221,
#83734, #84150, #84337, #84369, #86591,
#86598, #87123

**Chairperson is appointed from among faculty positions within the department.

STATE OF HAWAII
UNIVERSITY OF HAWAII
COMMUNITY COLLEGES
KAPIOLANI COMMUNITY COLLEGE
INSTRUCTION

Position Organization Chart

Chart III B

General Fund Perm
18.50

SUPERSEDED

Date JAN 15 1999

APPROVED/DISAPPROVED:

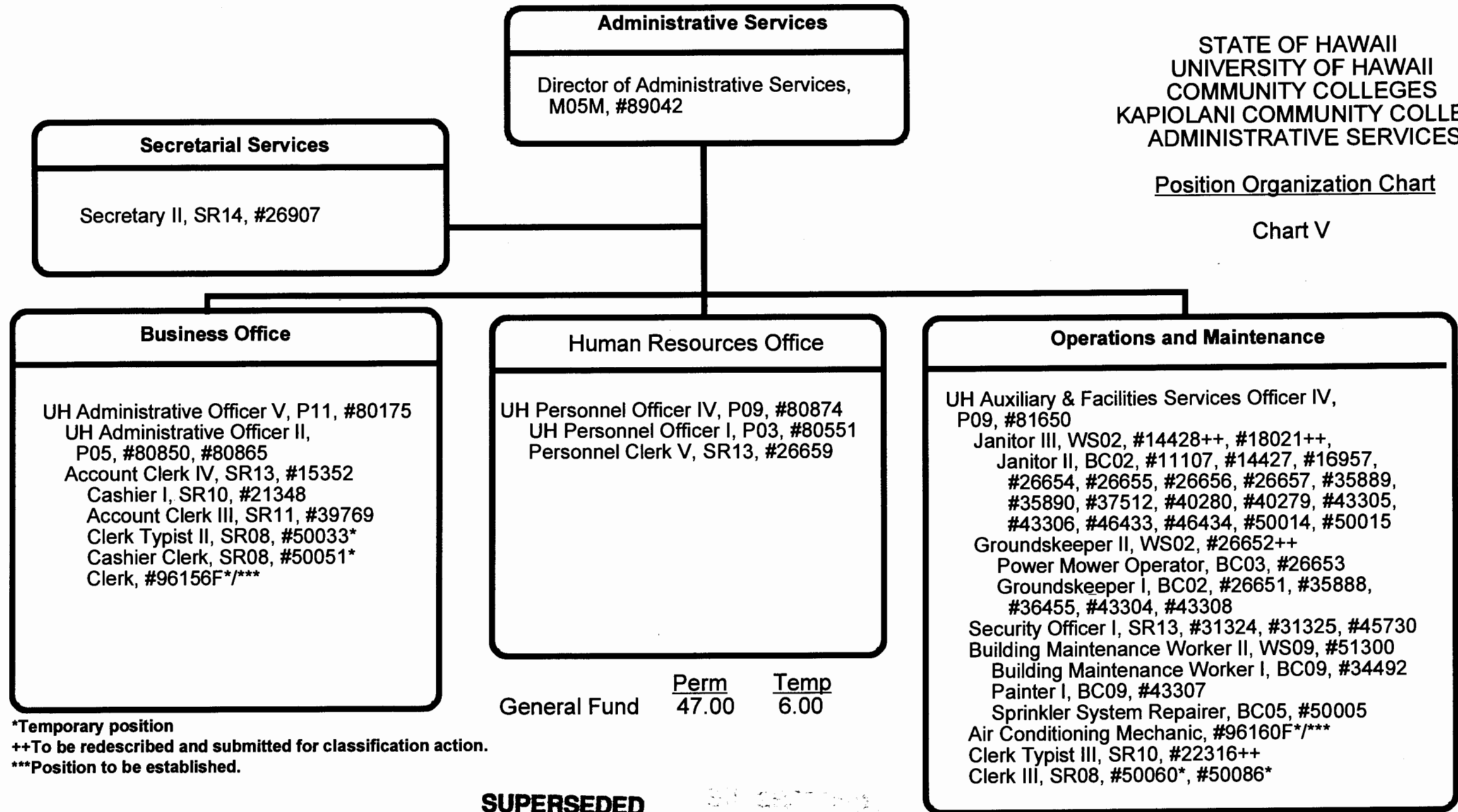
[Signature] 8/10/98

SENIOR VICE PRESIDENT/ CHANCELLOR FOR COMMUNITY COLLEGES

STATE OF HAWAII
UNIVERSITY OF HAWAII
COMMUNITY COLLEGES
KAPIOLANI COMMUNITY COLLEGE
ADMINISTRATIVE SERVICES

Position Organization Chart

Chart V



*Temporary position

++To be redescribed and submitted for classification action.

***Position to be established.

SUPERSEDED

Date FEB -1 1999

CHART UPDATED

DATE JUL - 1 1998

Food Service and Hospitality Education Division/Department

Chairperson**

Secretary II, SR14, #16962
Cook III, WS 08, #22318 (W), #32863 (W)
Snack Bar Cashier, SR06, #22319 (W)
UH Educational & Academic Support Specialist, P01,
#81304 (W), #81420 (W), #81422 (W)

Faculty (15.00)

Full-time: #82467, #82683, #82970, #83133, #83225, #83460,
#83684, #83901, #84091, #84103, #84304, #84539,
#86597, #86670, #86719

**Chairperson is appointed from among faculty positions within the department.

STATE OF HAWAII
UNIVERSITY OF HAWAII
COMMUNITY COLLEGES
KAPIOLANI COMMUNITY COLLEGE
INSTRUCTION

Position Organization Chart

Chart III C

SUPERSEDED
Date JAN 15 1999

	<u>Perm</u>
General Fund	16.00
(W) Revolving Funds	6.00

CHART UPDATED
DATE JUL - 1 1998

Health Education Division/Department

Health Sciences

Chairperson**

Secretary II, SR14, #32952
Clerk-Steno II, SR09, #40964 (.50)

Faculty (16.10)

Full-time: #82121, #82162, #82405, #82576, #83310, #83321, #83667, #84223, #84326, #85821, #86384,
#86385, #86741, #86752, #86882, #86886
Part-time: #87052 (.10)

Nursing

Chairperson**

Secretary II, SR14, #18093
Clerk-Typist II, SR08, #42015

Faculty (30.50)

Full-time: #82064, #82244, #82513, #84487, #84629, #84655, #86737, #86738, #86740, #86742, #86743,
#86746, #86747, #86749, #86750, #86751, #86774, #86776, #86777, #86778, #86832, #86833,
#86834, #86836, #86837, #86838, #86839, #86840
Part-time: #84308 (.50), #86736 (.50), #86739 (.50), #88072 (.50), #88074 (.50)

Emergency Medical Services

Chairperson**

Secretary II, SR14, #37300
Clerk-Typist II, SR08, #35641

Oahu Faculty (7.50)

Full-time: #86705, #86807, #86808, #86809, #87047, #87110, #87440
Part-time: #97663F*** (.25), #97657F*** (.25)

Hawaii Faculty (2.00)

Full-time+: #84739, #84740
Clerk-Typist II, SR08, #33867

Kauai Faculty (1.00)

Full-time: #84754
Clerk-Typist II, SR08, #33868 (.50)

Maui Faculty (2.00)

Full-time+: #85871, #88040
Clerk-Typist II, SR08, #33866 (.50)

**Chairperson is appointed from among faculty positions within the department.

***Position to be established.

+One supervisor is assigned from among the faculty positions within the island.

STATE OF HAWAII
UNIVERSITY OF HAWAII
COMMUNITY COLLEGES
KAPIOLANI COMMUNITY COLLEGE
INSTRUCTION

Position Organization Chart

Chart III E

General Fund Perm
66.60

SUPERSEDED

Date JAN 15 1999

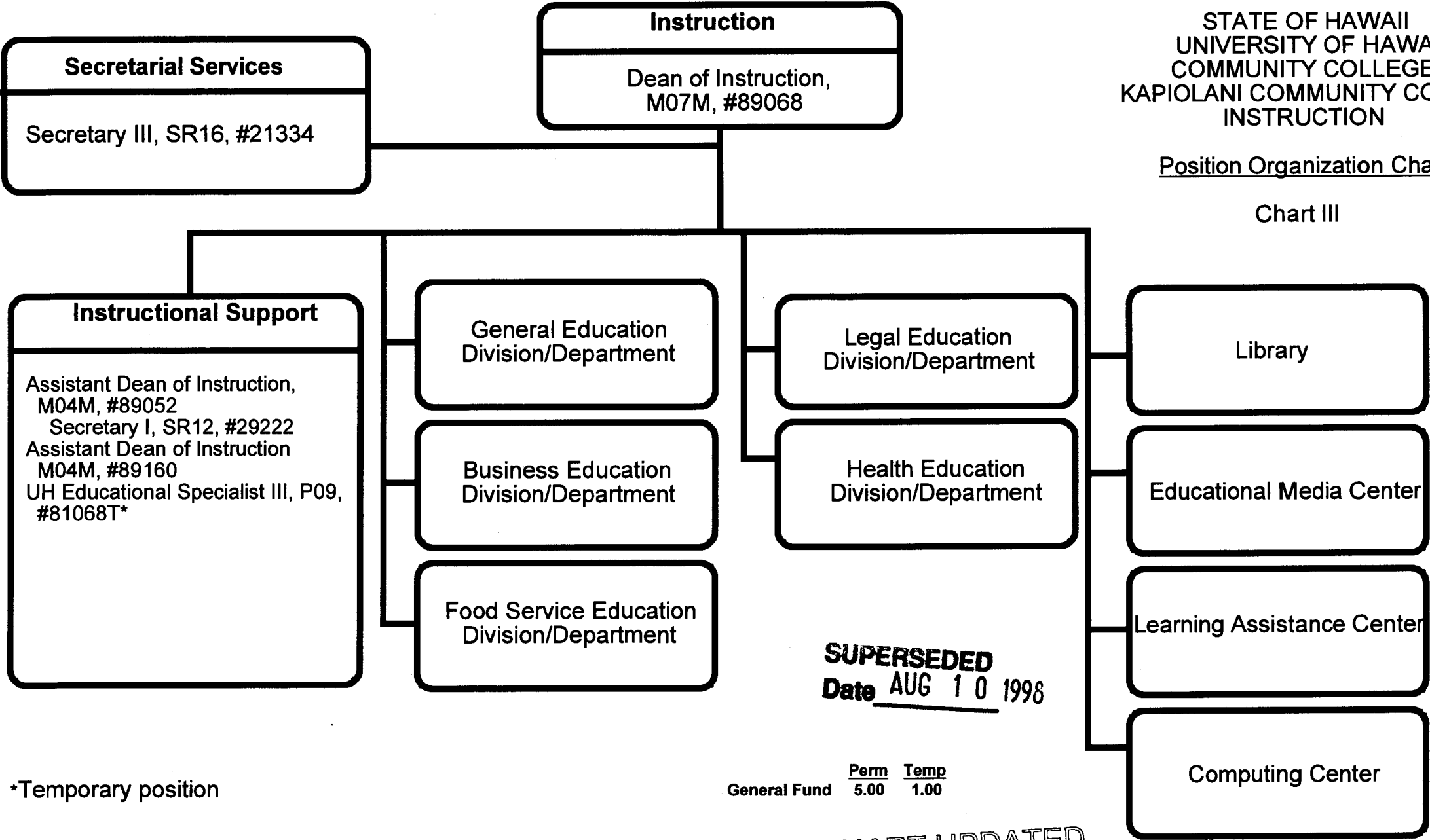
CHART UPDATED

DATE JUL - 1 1998

STATE OF HAWAII
UNIVERSITY OF HAWAII
COMMUNITY COLLEGES
KAPIOLANI COMMUNITY COLLEGE
INSTRUCTION

Position Organization Chart

Chart III



SUPERSEDED
Date AUG 10 1998

	Perm	Temp
General Fund	5.00	1.00

CHART UPDATED
DATE JUL - 1 1999

*Temporary position

STATE OF HAWAII
UNIVERSITY OF HAWAII
COMMUNITY COLLEGES
KAPIOLANI COMMUNITY COLLEGE
INSTRUCTION

Position Organization Chart

Chart III A

SUPERSEDED
Date AUG 10 1998

	<u>Perm</u>	<u>Temp</u>
General Fund	84.50	9.00

General Education Division/Department

Social Sciences

Chairperson**

Faculty (12.00)

Full-time: #82152, #82706, #82935, #83492, #83560, #83642, #83745, #84972, #84973, #86599, #86938, #87403

Language Arts

Chairperson**

Faculty (30.00)

Full-time: #82178, #82232, #82555, #82653, #82776, #83123, #83308, #83447, #83521, #83559, #83783, #83795, #83870, #83903, #84327, #84409, #84623, #86594, #86595, #86596, #86604, #86798, #86803, #86960, #86945, #87084T*, #87143T*, #87583T*, #87612T*

Part-time: #82540 (.50), #86799 (.50)

Mathematics/Science

Chairperson**

Faculty (25.00)

Full-time: #82031, #82394, #82492, #82910, #82981, #83096, #83262, #83357, #83688, #83733, #83939, #83974, #84458, #86592, #86593, #86600, #86606, #86718, #86754, #86827, #86830, #86959, #87401, #86947T*, #88032T*

UH Educational Specialist I, P03, #81246

Humanities

Chairperson**

Faculty (22.00)

Full-time: #82052, #82231, #82429, #82607, #82631, #82803, #82876, #82925, #82983, #83094, #83809, #84470, #84882, #84971, #84974, #86602, #86937, #87402, #87404, #86696T*, #87072T*, #87074T*

General Education, Clerical Staff****

Secretary II, SR14, #22313

Clerk-Typist II, SR08, #26658, #22310, #47900 (.50)

* Temporary position

**Chairperson is appointed from among faculty positions within the department.

****Clerical staff serves all four General Education Departments--Social Sciences, Language Arts, Mathematics/Science, and Humanities.

APPROVED/DISAPPROVED:
[Signature] 7/30/98

SENIOR VICE PRESIDENT / DATE
CHANCELLOR FOR COMMUNITY COLLEGES

Business Education Division/Department

Chairperson**

Secretary II, SR14, #22312
Clerk-Typist II, SR08, #47612 (.50)

Faculty (18.00)

Full-time: #82026, #82066, #82218, #82348, #82389,
#82429, #82503, #82728, #82795, #82931,
#83221, #83734, #84150, #84337, #84369,
#86591, #86598, #87123

****Chairperson is appointed from among faculty positions within the department.**

STATE OF HAWAII
UNIVERSITY OF HAWAII
COMMUNITY COLLEGES
KAPIOLANI COMMUNITY COLLEGE
INSTRUCTION

Position Organization Chart

Chart III B

SUPERSEDED
Date AUG 10 1998

General Fund Perm
19.50

CHART UPDATED
DATE JUL - 1 1998

STATE OF HAWAII
UNIVERSITY OF HAWAII
COMMUNITY COLLEGES
KAPIOLANI COMMUNITY COLLEGE
INSTRUCTION

Position Organization Chart

Chart III A



	<u>Perm</u>	<u>Temp</u>
General Fund	83.50	9.00

SUPERSEDED
Date JUL 30 1998

CHART UPDATED
DATE JUL - 1 1998

General Education Division/Department

Social Sciences

Chairperson**

Faculty (12.00)

Full-time: #82152, #82706, #82935, #83492, #83560, #83642, #83745, #84972, #84973, #86599,
#86938, #87403

Language Arts

Chairperson**

Faculty (31.00)

Full-time: #82178, #82232, #82555, #82653, #82776, #82876, #83123, #83308, #83447, #83521,
#83559, #83783, #83795, #83870, #83903, #84327, #84409, #84623, #86594, #86595,
#86596, #86604, #86798, #86803, #86960, #86945, #87084T*, #87143T*, #87583T*, #87612T*

Part-time: #82540 (.50), #86799 (.50)

Mathematics/Science

Chairperson**

Faculty (25.00)

Full-time: #82031, #82394, #82492, #82910, #82981, #83096, #83262, #83357, #83688, #83733,
#83939, #83974, #84458, #86592, #86593, #86600, #86606, #86718, #86754, #86827,
#86830, #86959, #87401, #86947T*, #88032T*

UH Educational Specialist I, P03, #81246

Humanities

Chairperson**

Faculty (20.00)

Full-time: #82052, #82231, #82607, #82631, #82803, #82925, #82983, #83094, #83809, #84470, #84882,
#84971, #84974, #86602, #86937, #87402, #87404, #86696T*, #87072T*, #87074T*

General Education, Clerical Staff****

Secretary II, SR14, #22313

Clerk-Typist II, SR08, #26658, #22310, #47900 (.50)

* Temporary position

**Chairperson is appointed from among faculty positions within the department.

****Clerical staff serves all four General Education Departments--Social Sciences, Language Arts, Mathematics/Science, and Humanities.