

STATE OF HAWAI'I
UNIVERSITY OF HAWAI'I
COMMUNITY COLLEGES
KAUA'I COMMUNITY COLLEGE

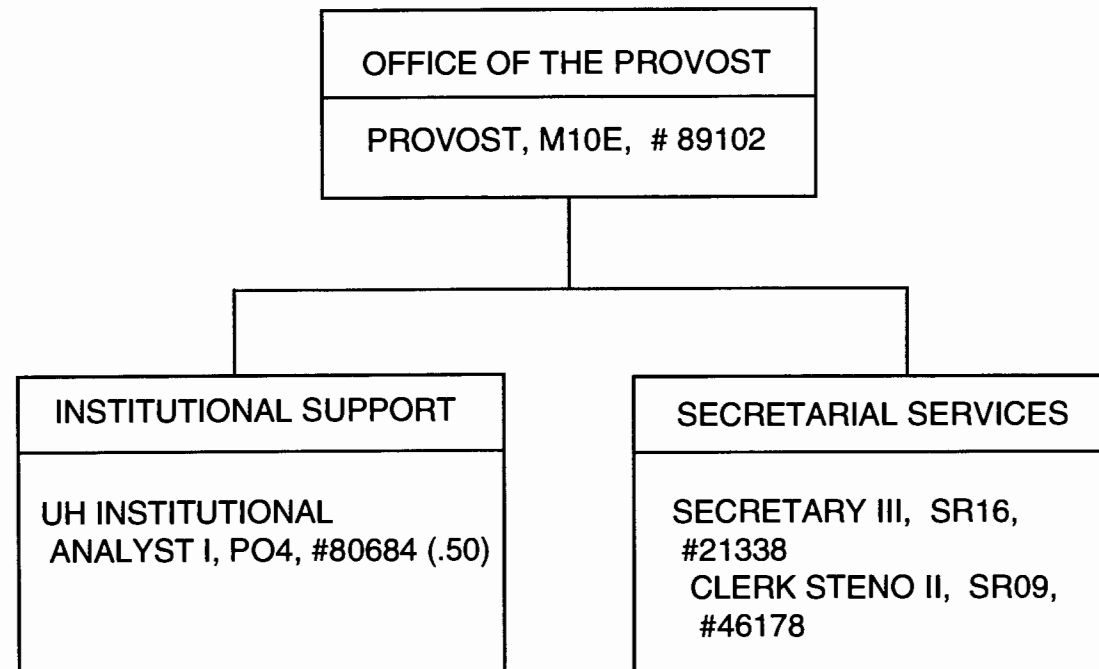
Organization Chart
Chart I

CHART UPDATED
DATE JUL - 1 1998

| | |
|---------------------|-------------|
| | <u>Perm</u> |
| GENERAL FUND | 140.00 |
| (W) REVOLVING FUNDS | 2.00 |

STATE OF HAWAII
UNIVERSITY OF HAWAII
COMMUNITY COLLEGES
KAUA'I COMMUNITY COLLEGE
OFFICE OF THE PROVOST

Position Organization Chart
Chart II



APPROVED/DISAPPROVED:
[Signature] 07/01/98

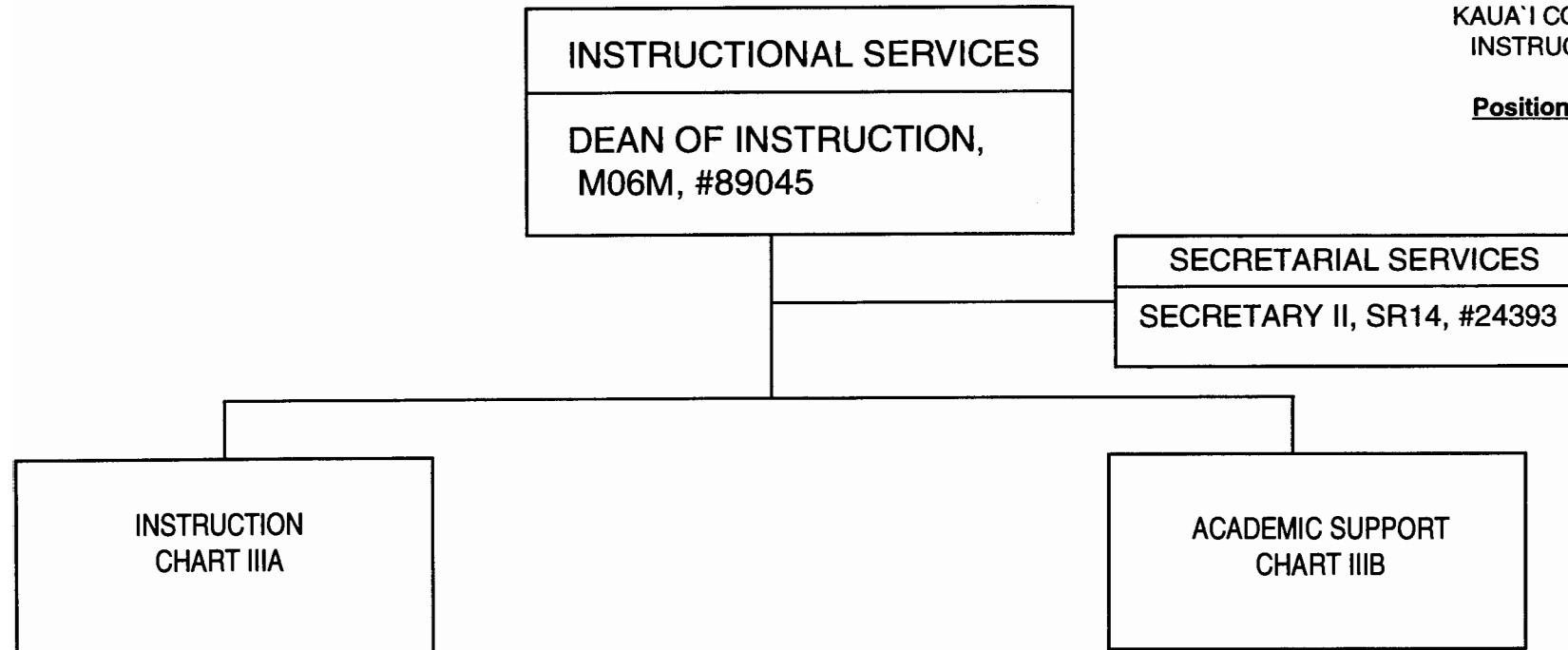
SENIOR VICE PRESIDENT / DATE
CHANCELLOR FOR COMMUNITY COLLEGES

GENERAL FUND Perm
3.50

CHART UPDATED
DATE JUL - 1 1998

STATE OF HAWAII
UNIVERSITY OF HAWAII
COMMUNITY COLLEGES
KAUA'I COMMUNITY COLLEGE
INSTRUCTIONAL SERVICES

Position Organization Chart
Chart III



GENERAL FUND Perm
2.00
CHART UPDATED
DATE **JUL - 1 1998**

STATE OF HAWAII
UNIVERSITY OF HAWAII
COMMUNITY COLLEGES
KAUA'I COMMUNITY COLLEGE
INSTRUCTION

Position Organization Chart
Chart IIIA

INSTRUCTION

STENO POOL

CLERK-STENO II, SR09,
#24785, 26901, 26902, 34970, 42211

LANGUAGE ARTS AND
HUMANITIES DIVISION

CHAIRPERSON **
FACULTY (14.00)
FOREIGN/ASIAN/
PACIFIC LANGUAGES
#87094, #88107
ART
#83324, 83640
ENGLISH
#82265, 83727, 84176,
84277, 85047
HISTORY
#82274
PHILOSOPHY
#82149
SPEECH
#82262
MUSIC
#86618
HAWAIIAN STUDIES
#86811

MATHEMATICS/SCIENCE/
SOCIAL SCIENCE DIVISION

CHAIRPERSON **
FACULTY (10.00)
MATH
#84443, 84652
CHEMISTRY
#83179
BIOLOGICAL SCIENCE
#82934
PHYSICAL SCIENCE
#83645
PSYCHOLOGY
#83567
ANTHROPOLOGY
#83208
SOCIOLOGY
#82416
POLITICAL SCIENCE
#85046
COMPUTER SCIENCE
#85048

TRADE AND
TECHNOLOGY DIVISION

CHAIRPERSON **
FACULTY (9.00)
AUTO TECHNOLOGY
#84392, 84612
AUTO BODY REPAIR
#84153
CARPENTRY
#83132
ELECTRICITY
#84605
MACHINE SHOP
#85045
ELECTRONICS
#83175, 86617
FACILITIES ENGINEERING
#84657

HEALTH EDUCATION
DIVISION

CHAIRPERSON **
FACULTY (12.00)
NURSING
#82579, 83216, 83856,
84015, 84687, 86763,
86765, 86779, 86786,
86889
HEALTH/P.E.
#86118
EARLY CHILDHOOD
#86810
UH EDUCATIONAL
SPECIALIST II, PO6, # 80623
UH EDUCATIONAL &
ACADEMIC SUPPORT
SPECIALIST, PO1, #80613

BUSINESS EDUCATION
DIVISION

CHAIRPERSON **
FACULTY (12.00)
ACCOUNTING
#82261, 84611
BUSINESS
#82376, 83732
SALES & MANAGEMENT
#82808, 85044
SECRETARIAL & RELATED
#82968, 83874
VISITOR INDUSTRY
#85043, 86901
FOOD SERVICES
#86579, 87014
UH EDUCATIONAL &
ACADEMIC SUPPORT
SPECIALIST, PO1,
#81918, 97920F (W)
CAFETERIA HELPER, BC02
#48456 (W)

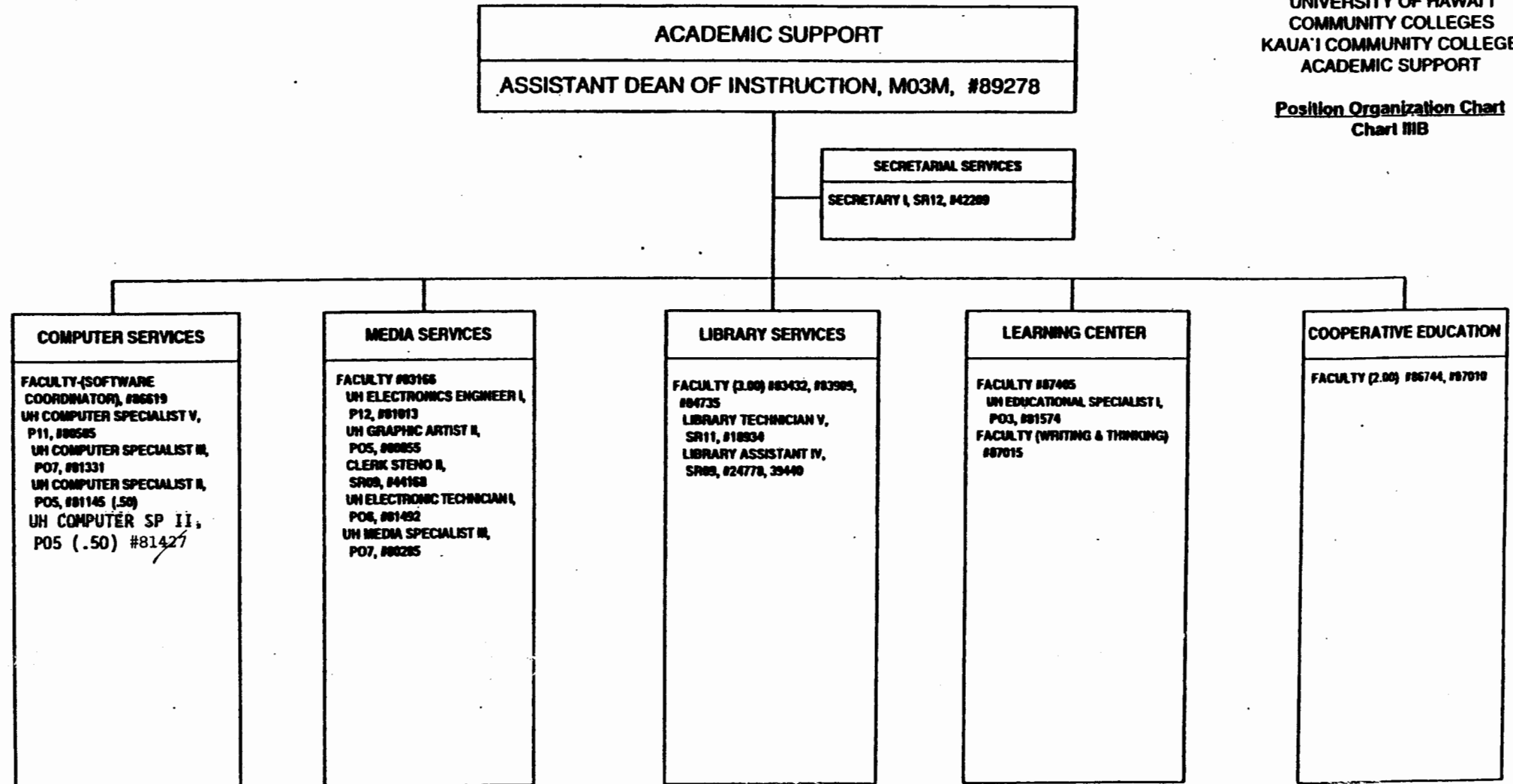
**Appointed from instructional positions within divisions on a rotating basis.

GENERAL FUND 65.00
(W) REVOLVING FUNDS 2.00

CHART UPDATED
DATE JUL - 1 1998

STATE OF HAWAII
UNIVERSITY OF HAWAII
COMMUNITY COLLEGES
KAUA'I COMMUNITY COLLEGE
ACADEMIC SUPPORT

Position Organization Chart
Chart IIB



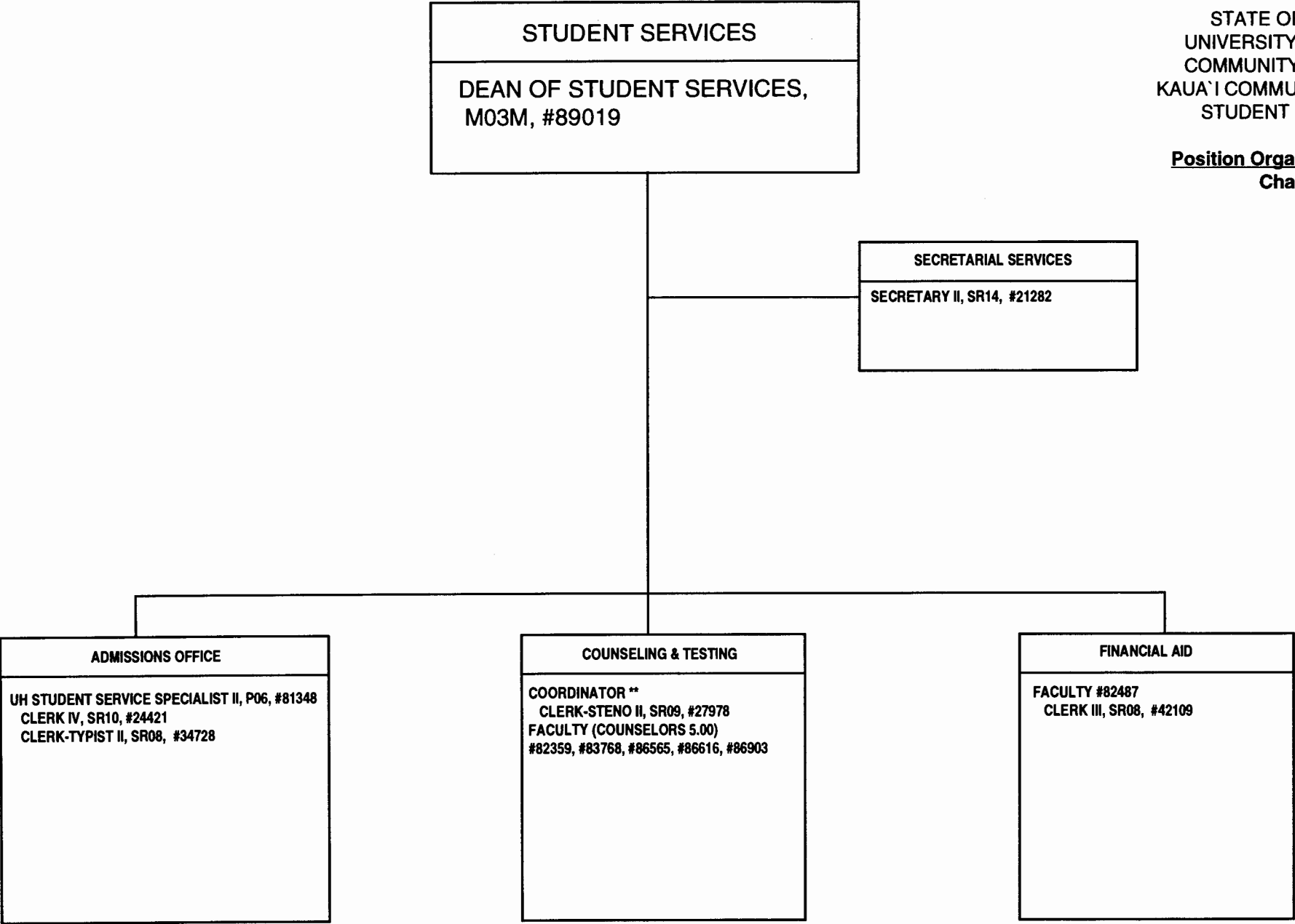
Position Establishment
Director of University Center, 98775F

GENERAL FUND ~~29.62~~ 24.00

APPROVED/DISAPPROVED:
Joseph L. Trunada 3/23/99
SENIOR VICE PRESIDENT/ DATE
CHANCELLOR FOR COMMUNITY COLLEGES

STATE OF HAWAII
UNIVERSITY OF HAWAII
COMMUNITY COLLEGES
KAUA'I COMMUNITY COLLEGE
STUDENT SERVICES

Position Organization Chart
Chart IV



**Coordinator is appointed from among faculty positions within the unit.

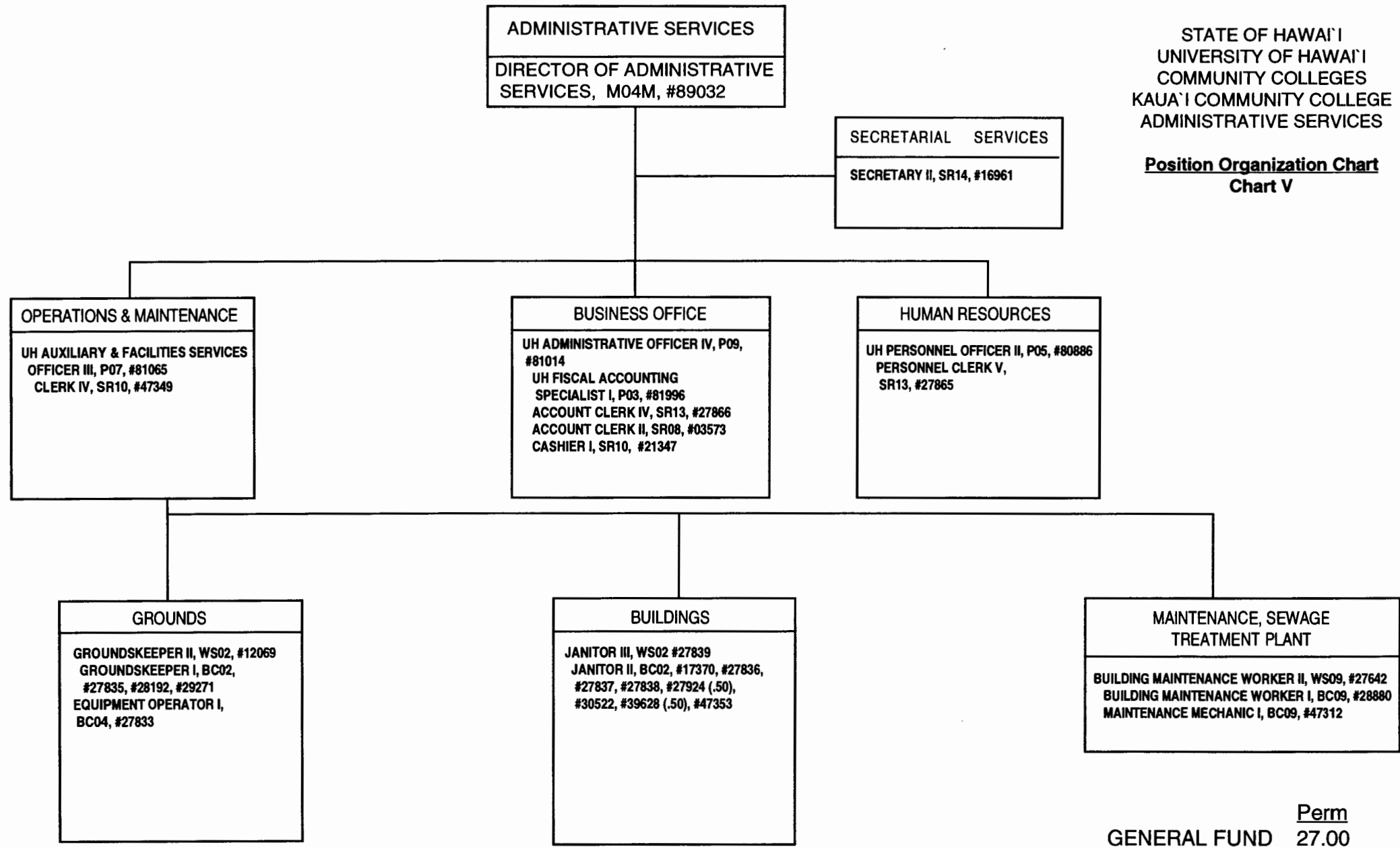
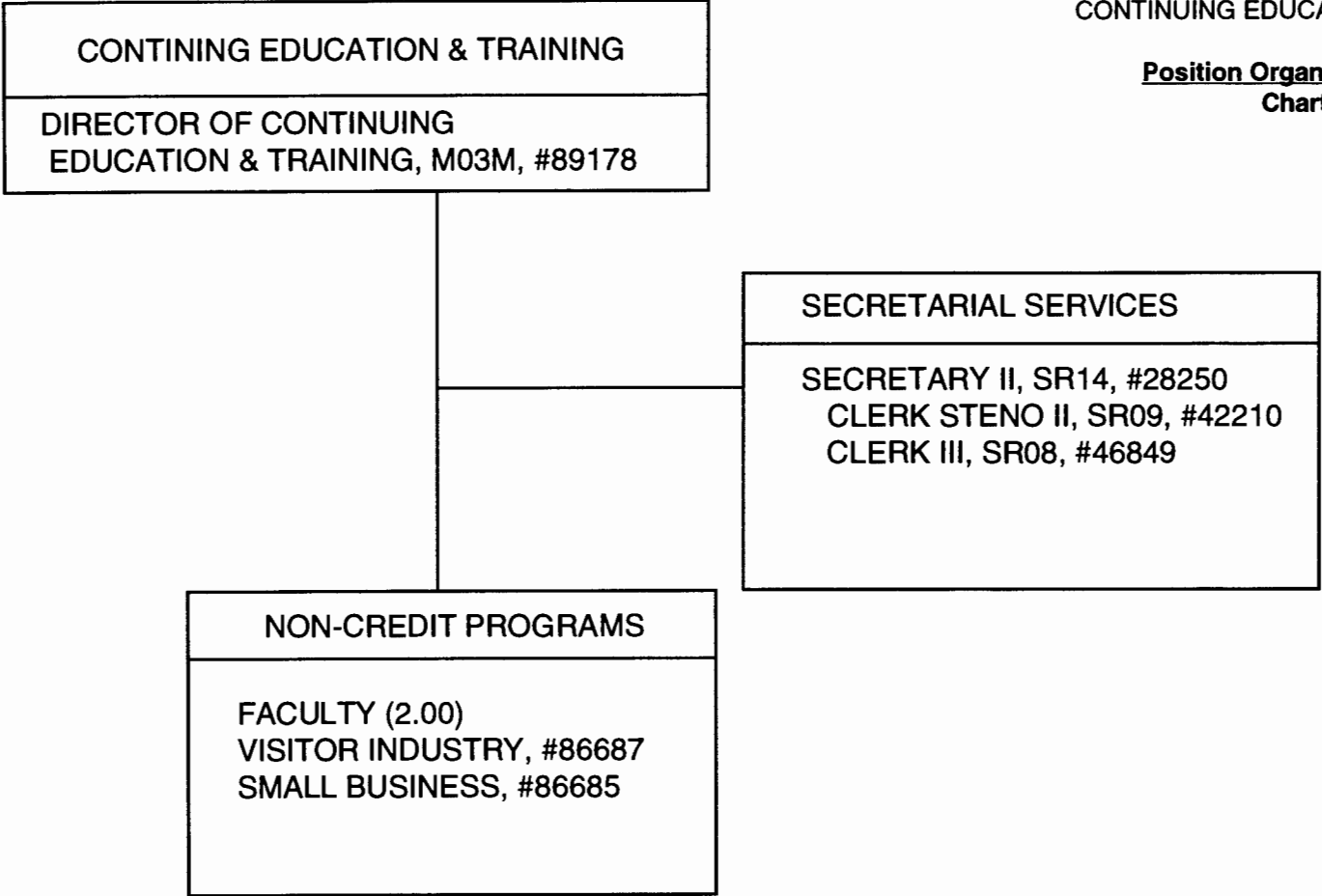


CHART UPDATED
JUL - 1 1998
DATE

STATE OF HAWAII
UNIVERSITY OF HAWAII
COMMUNITY COLLEGES
KAUA'I COMMUNITY COLLEGE
CONTINUING EDUCATION & TRAINING

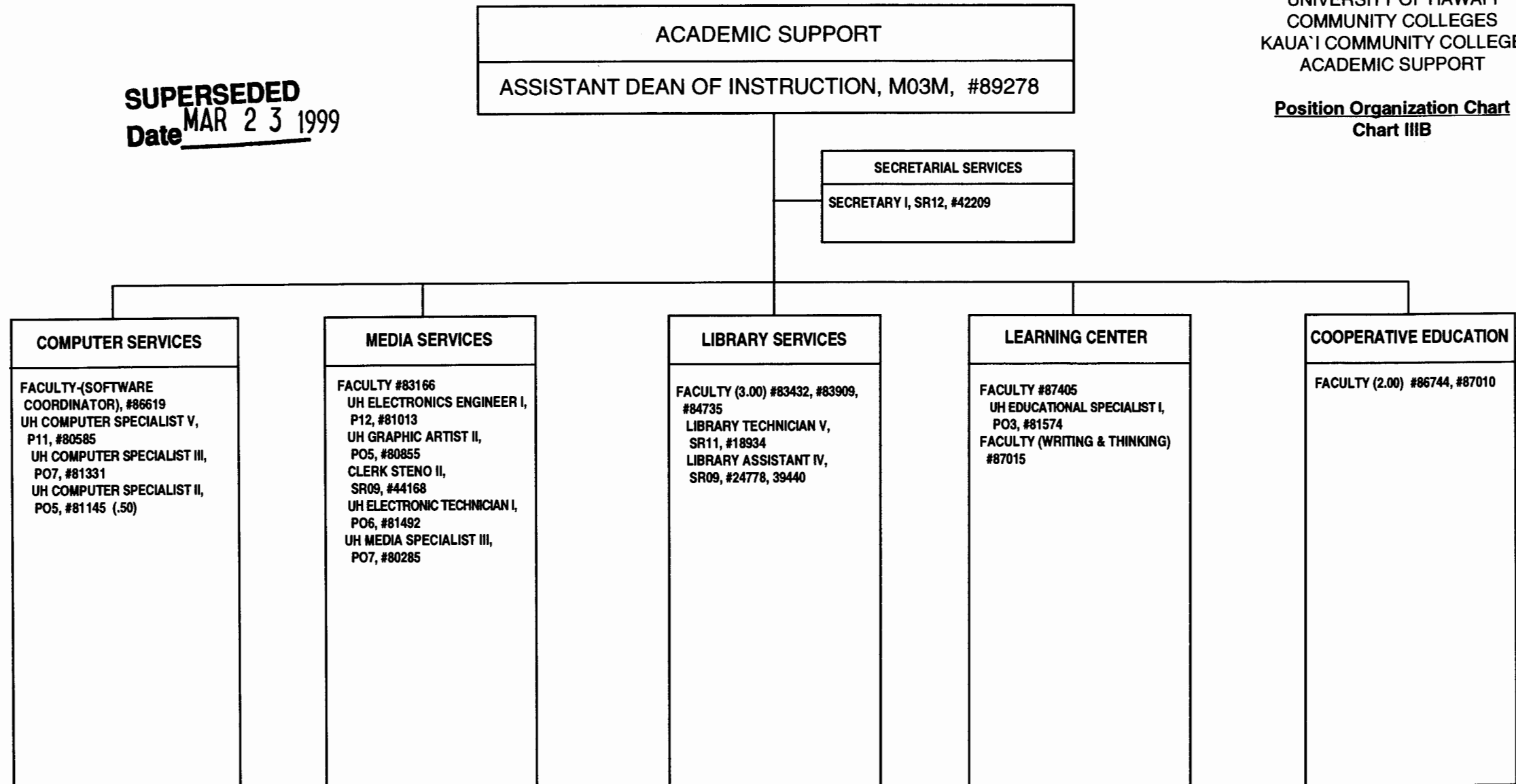
Position Organization Chart
Chart VI



SUPERSEDED
Date MAR 23 1999

STATE OF HAWAII
UNIVERSITY OF HAWAII
COMMUNITY COLLEGES
KAUA'I COMMUNITY COLLEGE
ACADEMIC SUPPORT

Position Organization Chart
Chart IIIB



Pending Establishment
Director of University Center, 98775F

GENERAL FUND Perm
23.50

CHART UPDATED
DATE JUL - 1 1998