

STATE OF HAWAII  
UNIVERSITY OF HAWAII  
COMMUNITY COLLEGES  
LEEWARD COMMUNITY COLLEGE

Organization Chart

Chart I

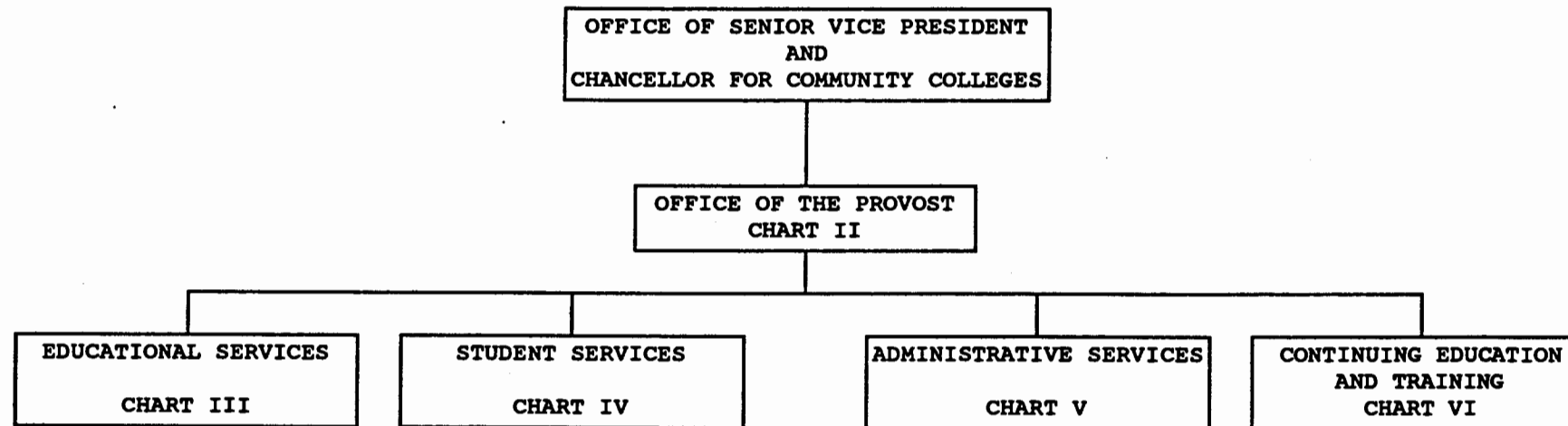


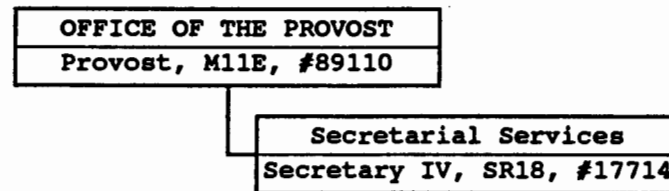
CHART UPDATED  
JUL - 1 1998

DATE		<u>PERM</u>	<u>TEMP</u>
	GENERAL FUND	290.50	1.00
	(B) SPECIAL FUNDS	12.00	
	(W) REVOLVING FUNDS	4.00	

STATE OF HAWAII  
UNIVERSITY OF HAWAII  
COMMUNITY COLLEGES  
LEEWARD COMMUNITY COLLEGE  
OFFICE OF THE PROVOST

Position Organization Chart

Chart II



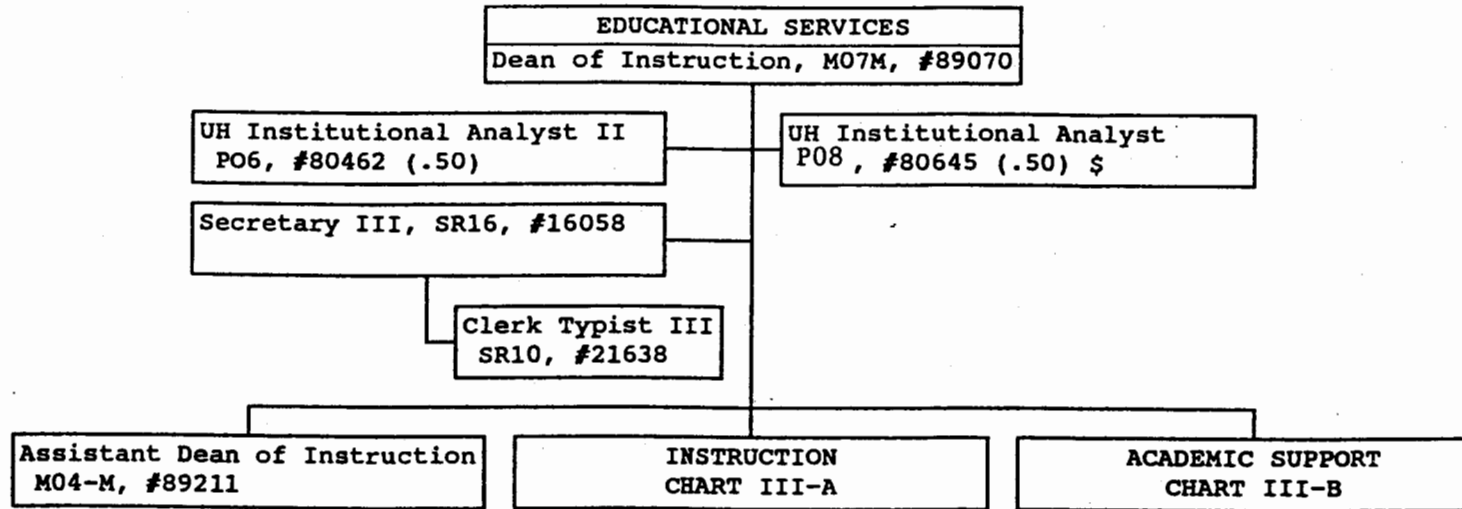
GENERAL FUND      PERM  
2.00

CHART UPDATED  
DATE JUL - 1 1998

STATE OF HAWAII  
UNIVERSITY OF HAWAII  
COMMUNITY COLLEGES  
LEEWARD COMMUNITY COLLEGE  
EDUCATIONAL SERVICES

Position Organization Chart

Chart III



*Joseph L. Lunn*  
Senior Vice-President and Chancellor  
for Community Colleges

*4/15/99* GENERAL FUND PERM 5.00  
Date

\$ Effective 7/1/99 the position was transferred from UHM and must be redecribed

7-1-000

STATE OF HAWAII  
UNIVERSITY OF HAWAII  
COMMUNITY COLLEGES  
LEEWARD COMMUNITY COLLEGE  
INSTRUCTION

Organization Chart

Chart III-A

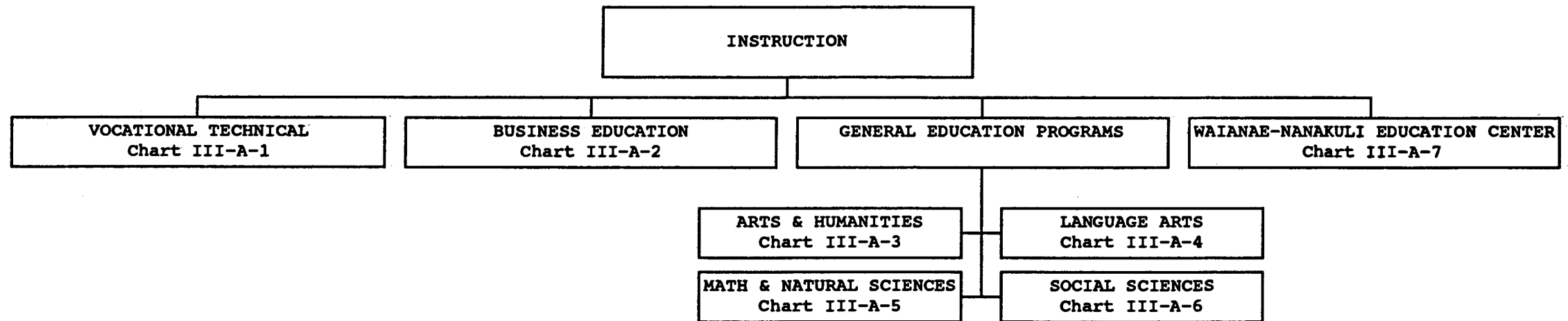
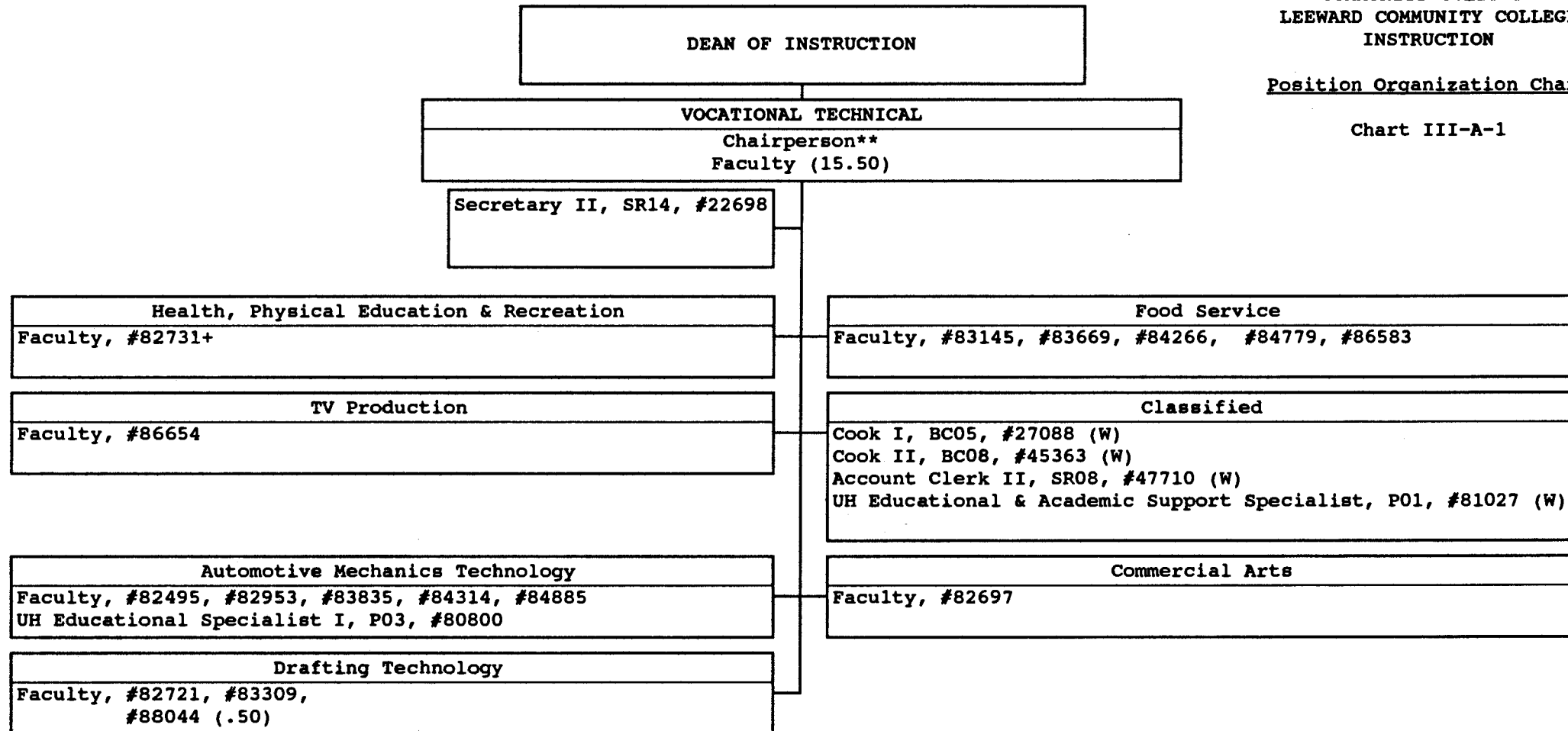


CHART UPDATED  
JUL - 1 1998  
DATE \_\_\_\_\_

STATE OF HAWAII  
UNIVERSITY OF HAWAII  
COMMUNITY COLLEGES  
LEEWARD COMMUNITY COLLEGE  
INSTRUCTION

Position Organization Chart

Chart III-A-1



+Administratively assigned to Waianae-Nanakuli Education Center  
\*\*Chairperson is appointed from a faculty position within the unit

GENERAL FUND  
(W) REVOLVING FUNDS

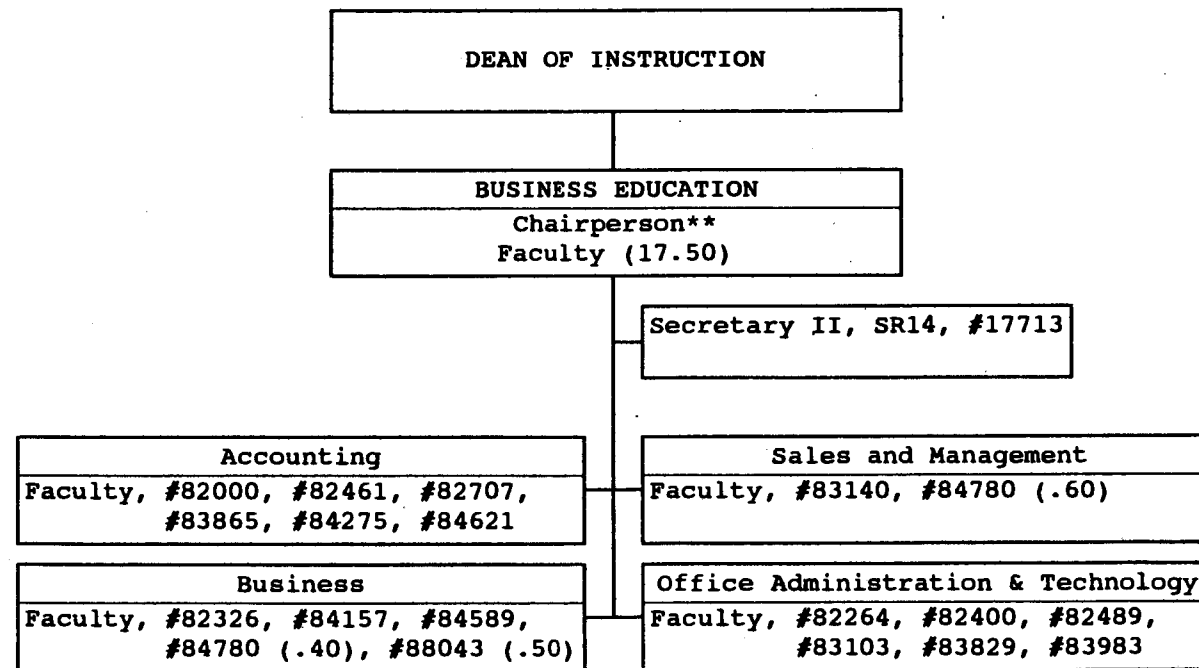
PERM  
17.50  
4.00

CHART UPDATED  
DATE JUL - 1 1998

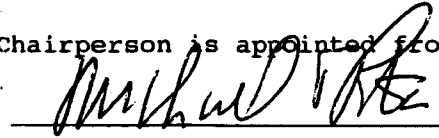
STATE OF HAWAII  
 UNIVERSITY OF HAWAII  
 COMMUNITY COLLEGES  
 LEEWARD COMMUNITY COLLEGE  
 INSTRUCTION

Position Organization Chart

Chart III-A-2



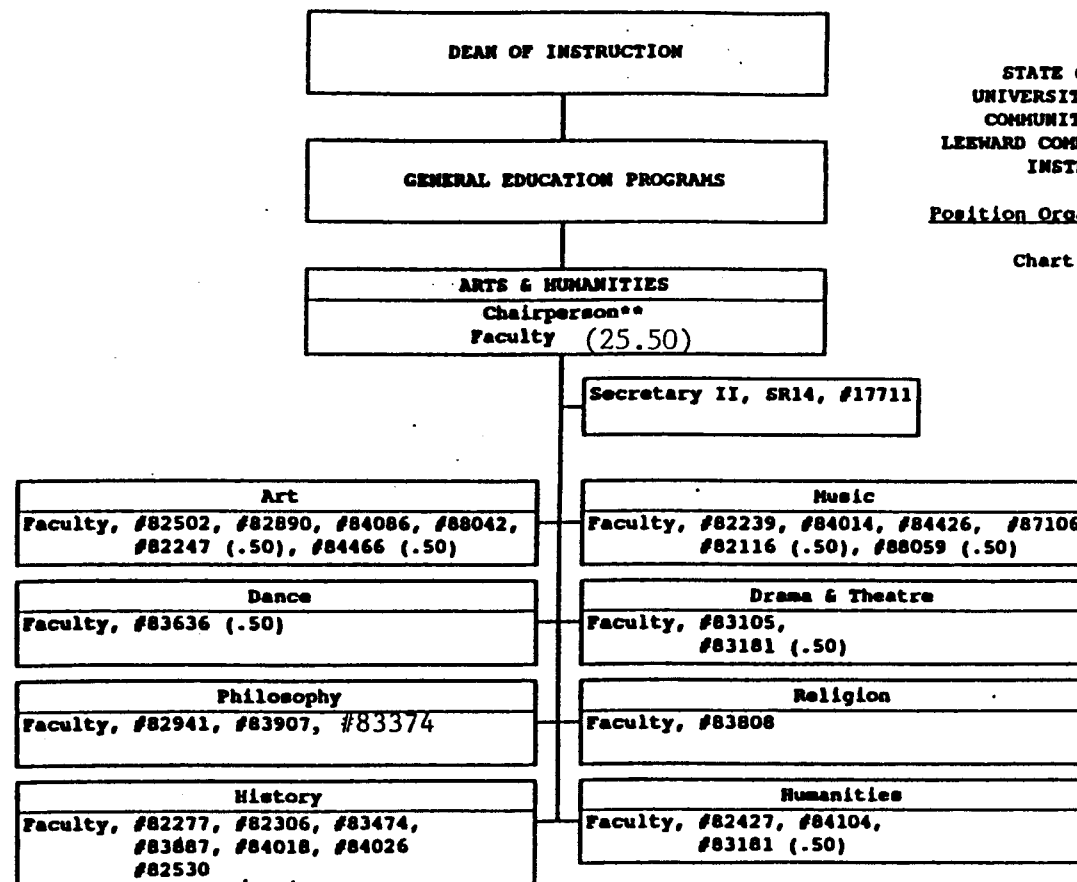
\*\*Chairperson is appointed from a faculty position within the unit

  
 Senior Vice-President & Chancellor  
 for Community Colleges

  
 Date

PERM

GENERAL FUND 18.50



STATE OF HAWAII  
UNIVERSITY OF HAWAII  
COMMUNITY COLLEGES  
LEEWARD COMMUNITY COLLEGE  
INSTRUCTION

Position Organization Chart

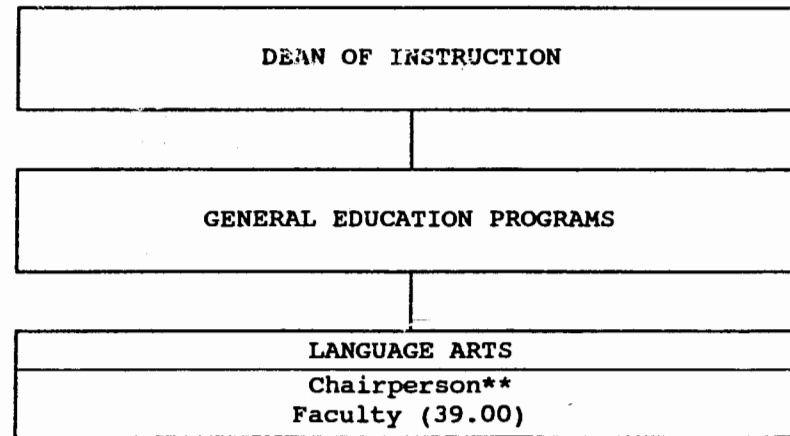
Chart III-A-3

*[Signature]*  
Senior Vice-President & Chancellor  
for Community Colleges

*3/25/99*  
Date

\*\*Chairperson is appointed from a faculty position within the unit.

PERM  
GENERAL FUND 26-50



STATE OF HAWAII  
UNIVERSITY OF HAWAII  
COMMUNITY COLLEGES  
LEEWARD COMMUNITY COLLEGE  
INSTRUCTION

Position Organization Chart

Chart III-A-4

English As A Second Language
Faculty, #82645, #84555

English
Faculty, #82129, #82409, #82570, #82932, #82960, #83210, #83472, #83570, #83605, #83697, #83850, #83945, #84027, #84181, #84602, #84653, #84883, #86399, #86789, #86790, #86791, #86842, #86843, #86844, #86855, #83607 (.75), #84098 (.40), #84490 (.40)

Journalism
Faculty, #84490 (.60)

European Language
Faculty, #82165, #82872, #83607 (.25)

Secretary II, SR14, #17710

Asian Pacific Languages
Faculty, #82498, #82692, #82888, #83442, #84098 (.60)

Speech
Faculty, #82273, #82496

Communication
Faculty, #84606

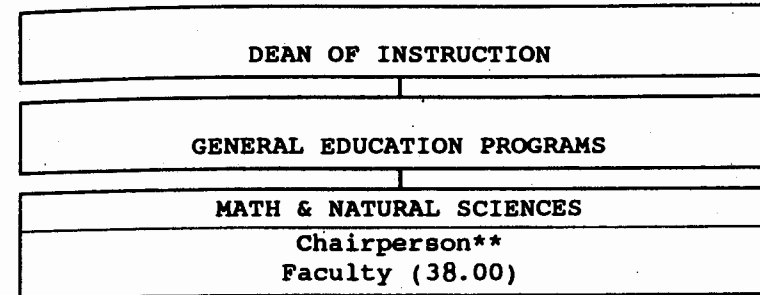
PERM

GENERAL FUND 40.00

\*\*Chairperson is appointed from a faculty position within the unit

*Jyels Inunada*  
Senior Vice-President & Chancellor for  
Community Colleges

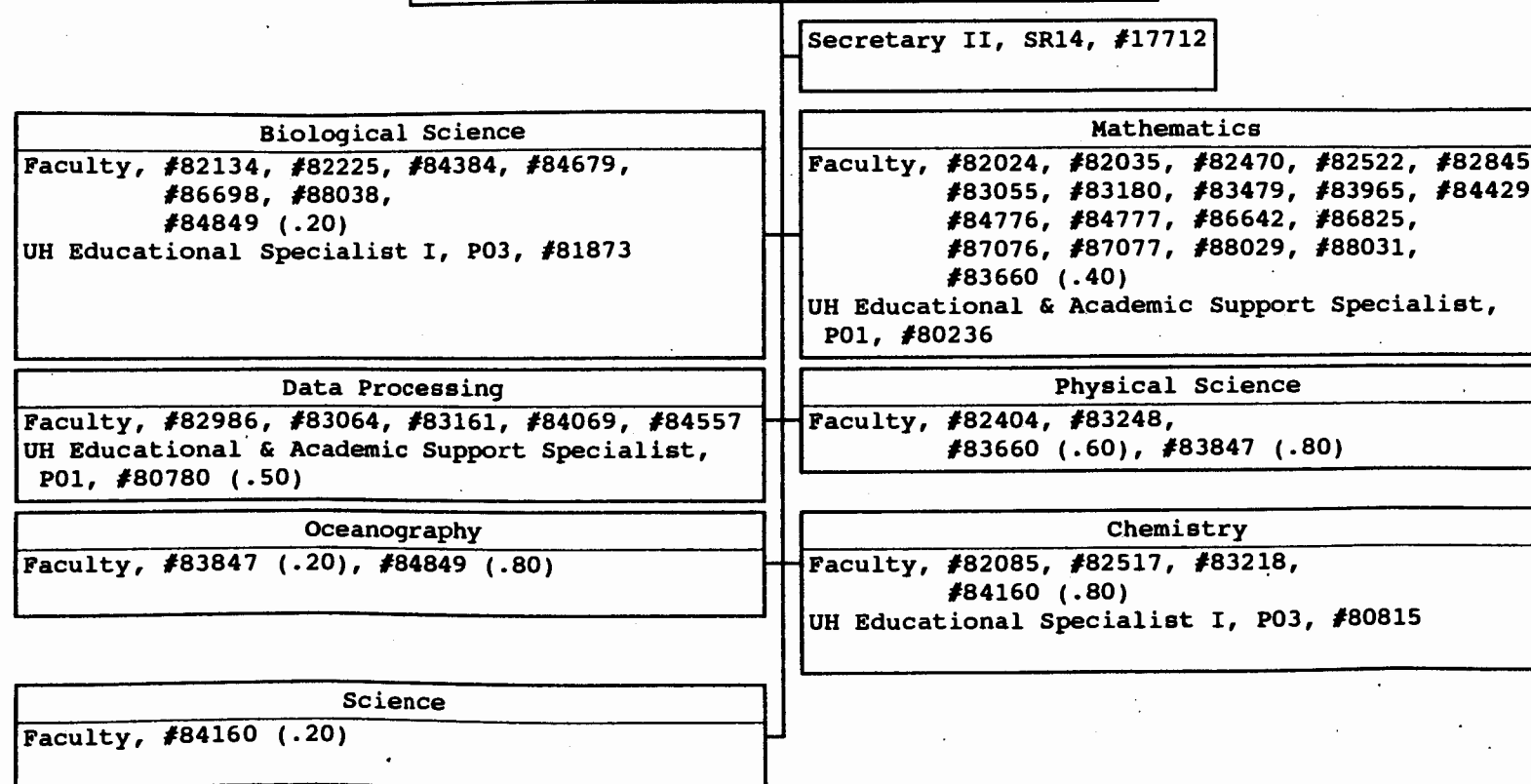
5/5/99  
Date



STATE OF HAWAII  
UNIVERSITY OF HAWAII  
COMMUNITY COLLEGES  
LEEWARD COMMUNITY COLLEGE  
INSTRUCTION

Position Organization Chart

Chart III-A-5



\*\*Chairperson is appointed from a faculty position within the unit

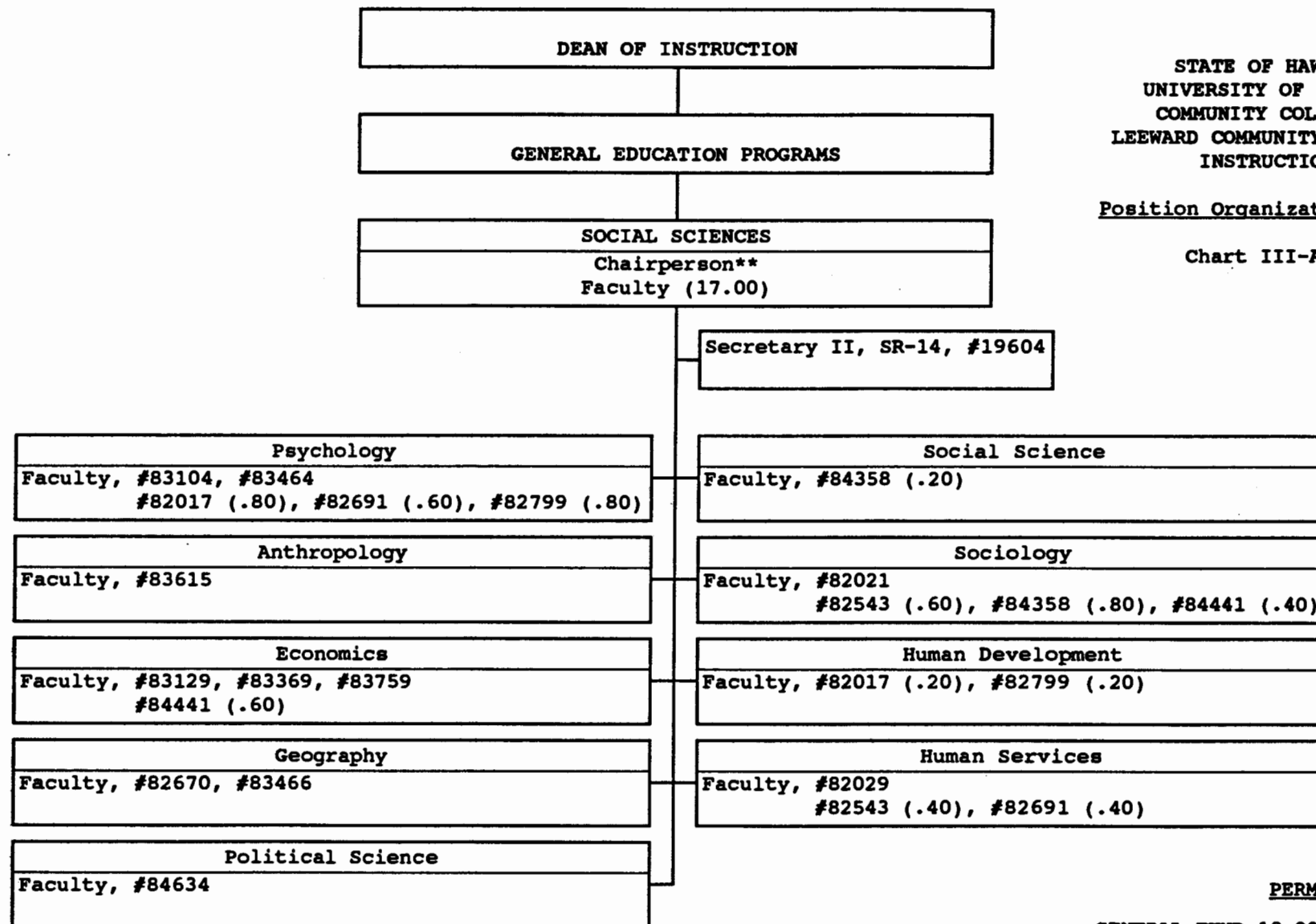
*Michael T. A.*

Senior Vice-President & Chancellor  
for Community Colleges

5/25/99  
Date

PERM

GENERAL FUND 42.50



STATE OF HAWAII  
UNIVERSITY OF HAWAII  
COMMUNITY COLLEGES  
LEEWARD COMMUNITY COLLEGE  
INSTRUCTION

Position Organization Chart

Chart III-A-6

PERM

GENERAL FUND 18.00

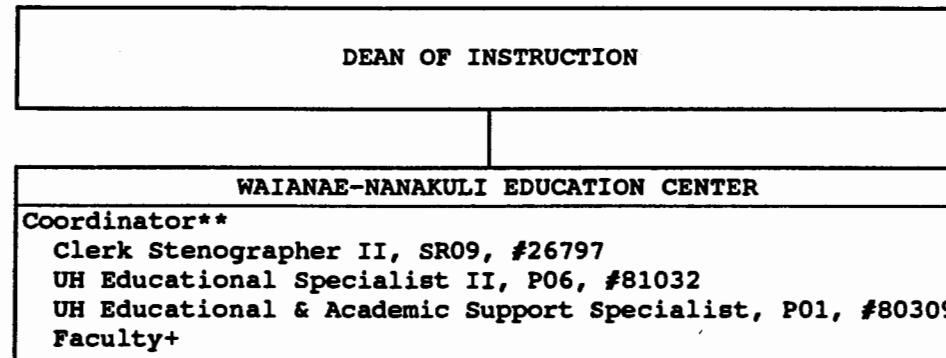
CHART UPDATED  
JUL - 1 1998  
DATE \_\_\_\_\_

\*\*Chairperson is appointed from a faculty position within the unit

STATE OF HAWAII  
UNIVERSITY OF HAWAII  
COMMUNITY COLLEGES  
LEEWARD COMMUNITY COLLEGE  
INSTRUCTION

Position Organization Chart

Chart III-A-7



PERM

GENERAL FUND 3.00

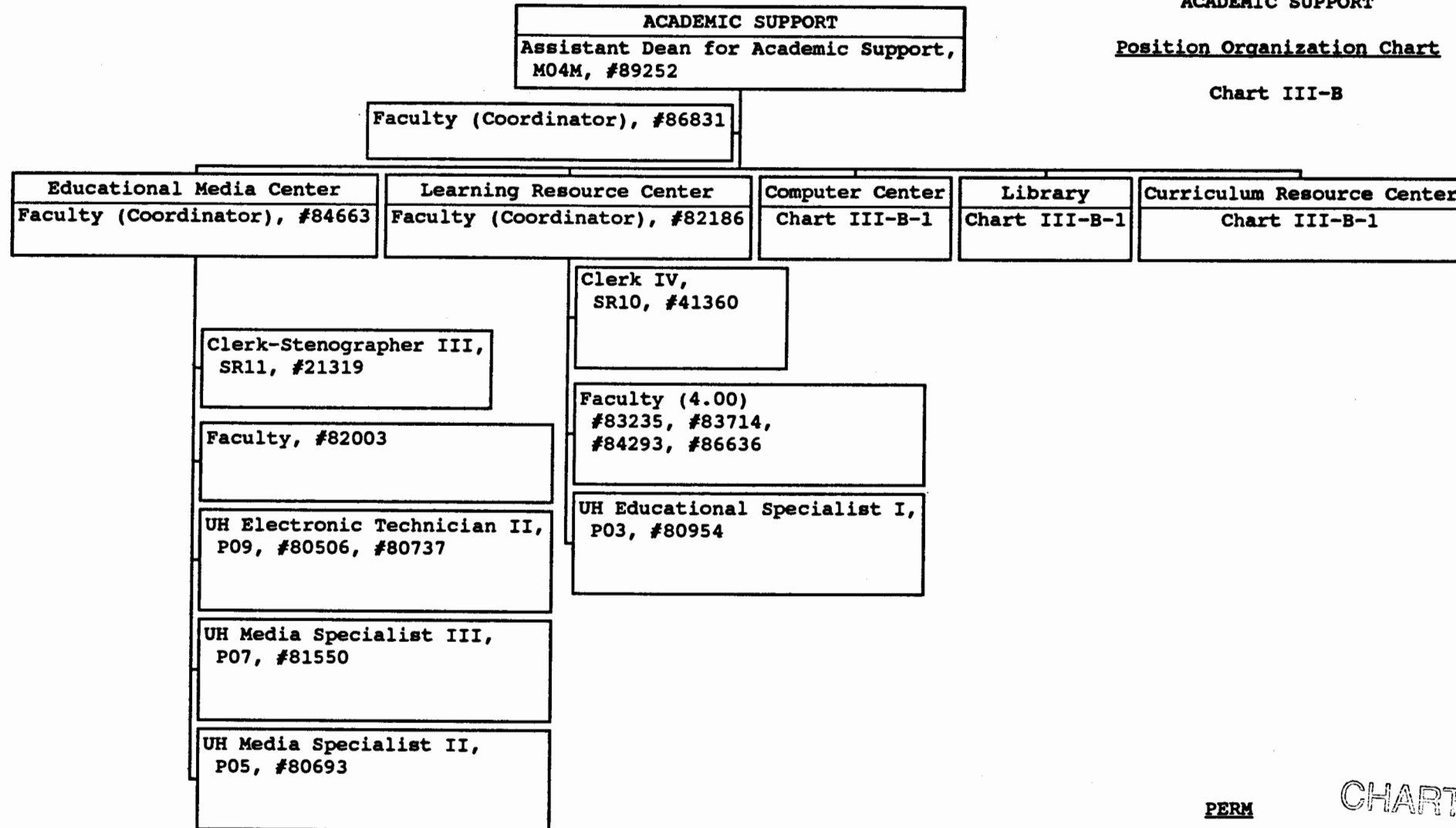
+Rotating faculty positions (2.00) from the divisions  
\*\*Coordinator is appointed from a faculty position from the instructional divisions.

CHART UPDATED  
DATE JUL - 1 1998

STATE OF HAWAII  
UNIVERSITY OF HAWAII  
COMMUNITY COLLEGES  
LEEWARD COMMUNITY COLLEGE  
ACADEMIC SUPPORT

Position Organization Chart

Chart III-B



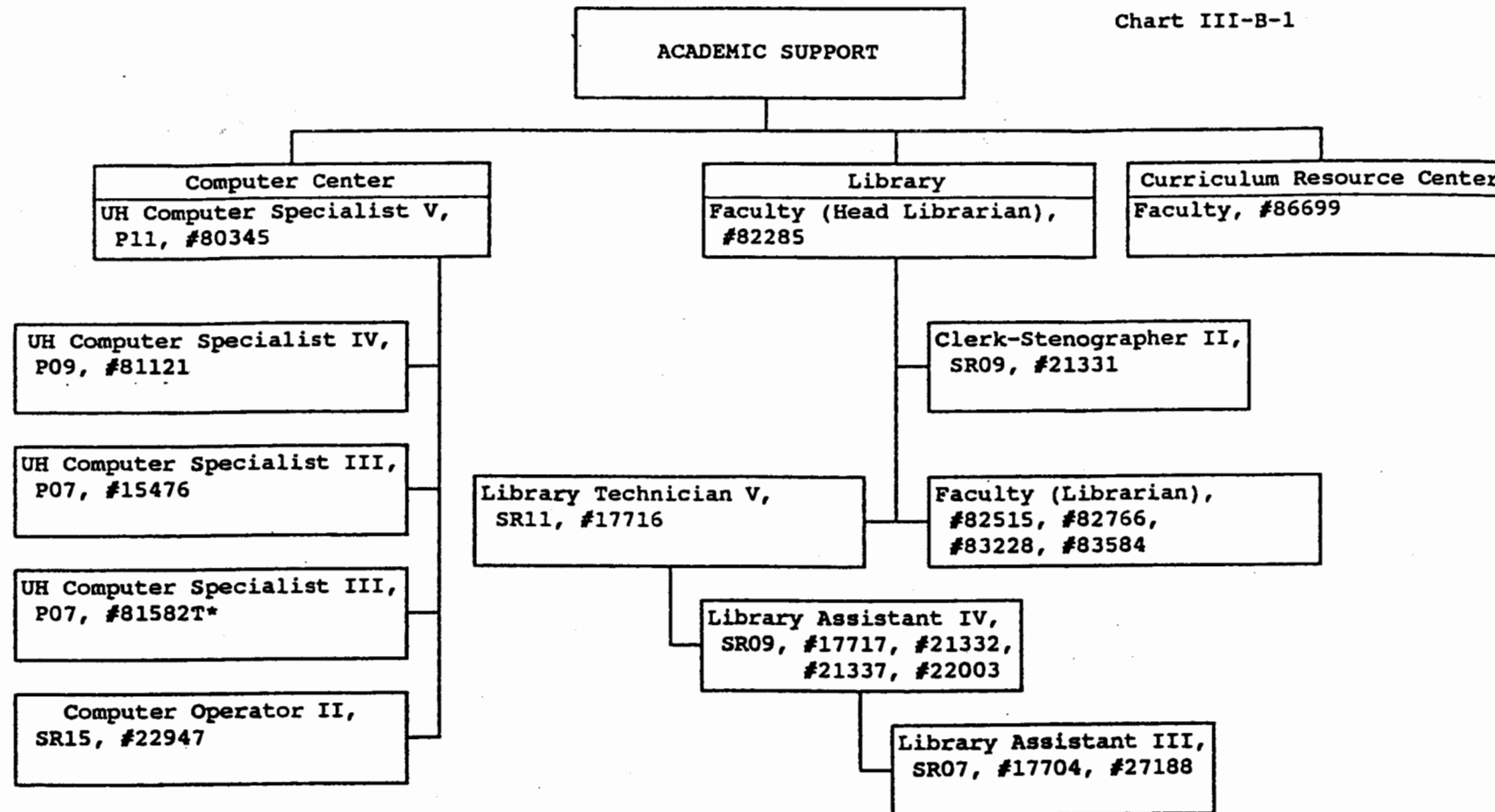
PERM  
GENERAL FUND 16.00

CHART UPDATED  
DATE JUL - 1 1998

STATE OF HAWAII  
UNIVERSITY OF HAWAII  
COMMUNITY COLLEGES  
LEEWARD COMMUNITY COLLEGE  
ACADEMIC SUPPORT

Position Organization Chart

Chart III-B-1



\*Temporary Position

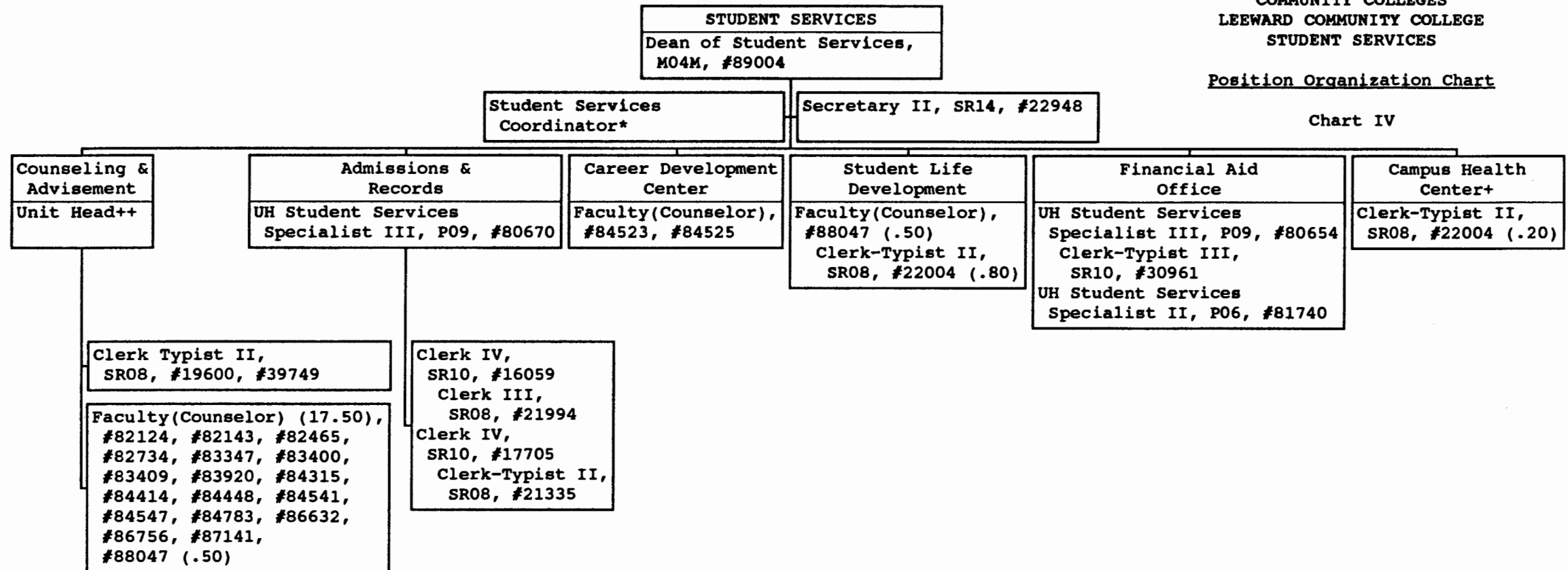
*Michael P. [Signature]*  
Senior Vice-President & Chancellor  
for Community Colleges

	PERM	TEMP
GENERAL FUND	18.00	1.00
Date	6/9/99	

STATE OF HAWAII  
UNIVERSITY OF HAWAII  
COMMUNITY COLLEGES  
LEEWARD COMMUNITY COLLEGE  
STUDENT SERVICES

Position Organization Chart

Chart IV



- + Services provided by UH School of Medicine
- ++ Unit Head is appointed by Dean of Student Services  
Services upon recommendation of faculty
- \* Coordinator is appointed from a faculty position within the unit

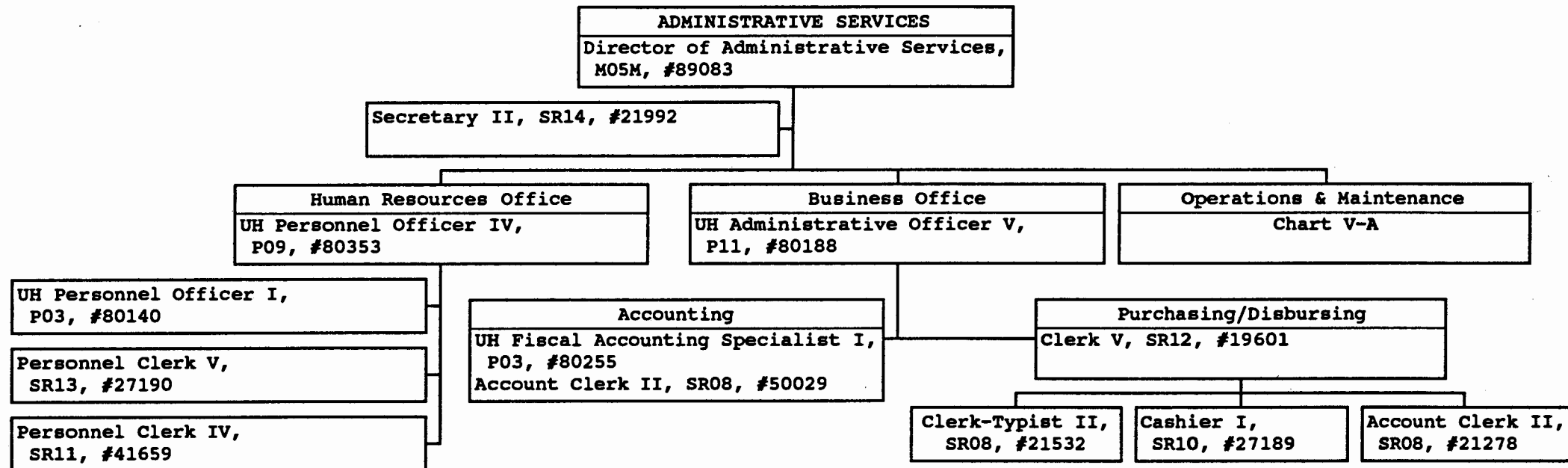
PERM  
GENERAL FUND 33.00

CHART UPDATED  
DATE JUL - 1 1998

STATE OF HAWAII  
UNIVERSITY OF HAWAII  
COMMUNITY COLLEGES  
LEEWARD COMMUNITY COLLEGE  
ADMINISTRATIVE SERVICES

Position Organization Chart

Chart V



PERM

CHART UPDATED

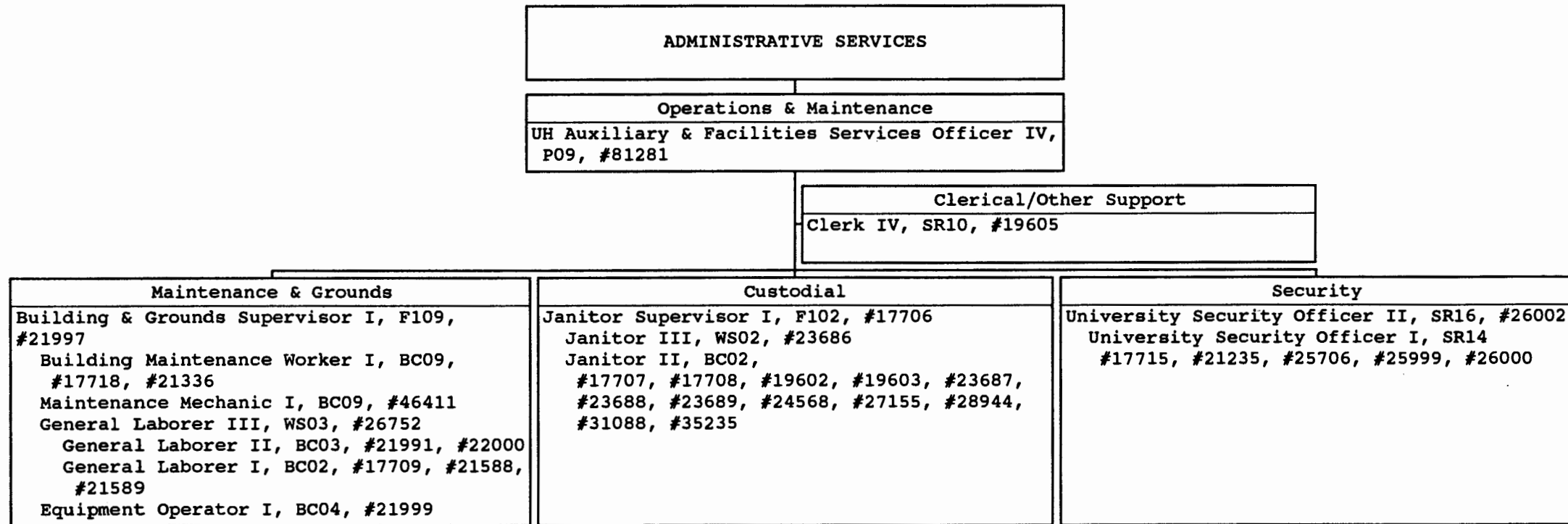
GENERAL FUND 13.00

DATE JUL - 1 1998

STATE OF HAWAII  
UNIVERSITY OF HAWAII  
COMMUNITY COLLEGES  
LEEWARD COMMUNITY COLLEGE  
ADMINISTRATIVE SERVICES

Position Organization Chart

Chart V-A



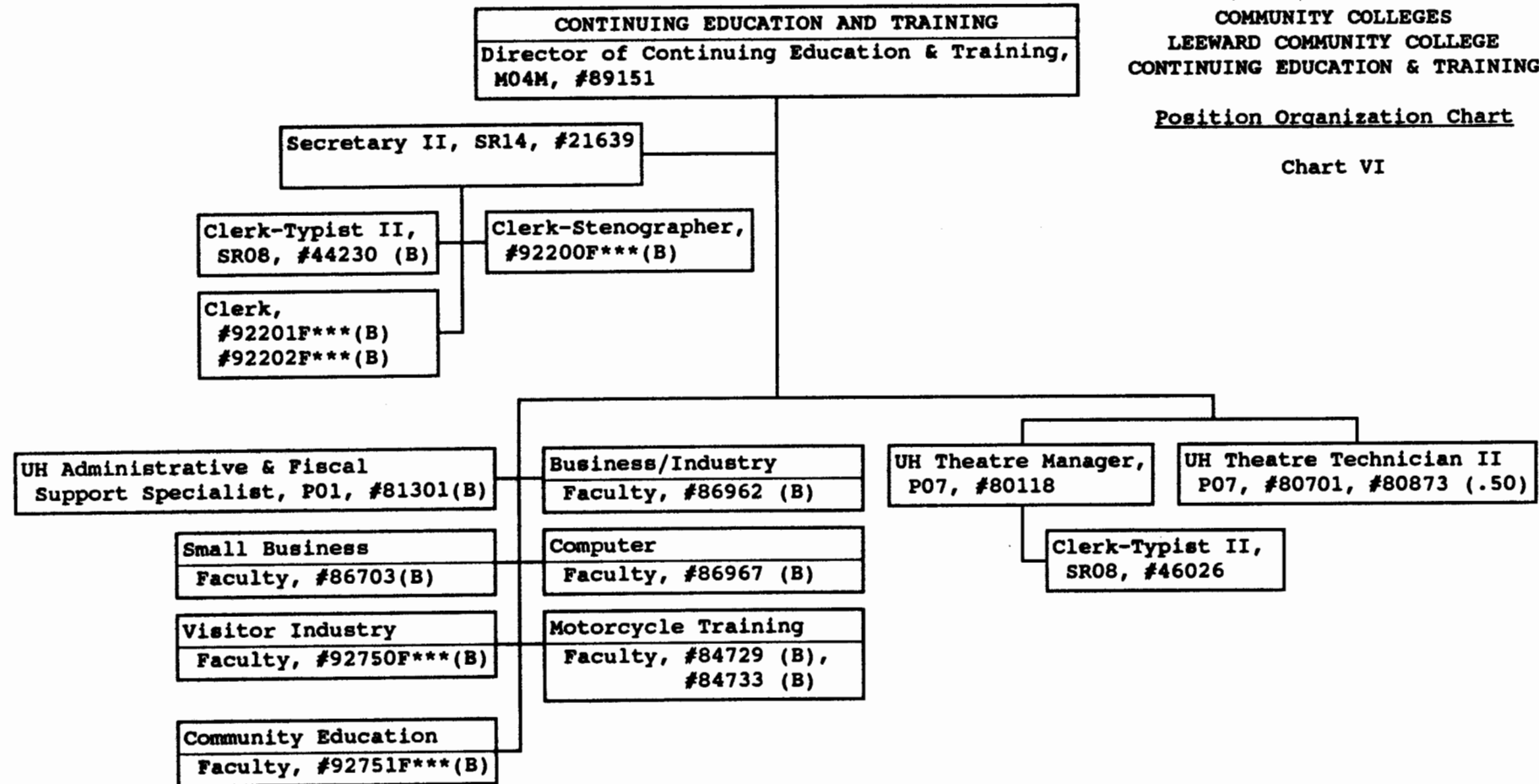
PERM  
GENERAL FUND 33.00

CHART UPDATED  
DATE JUL - 1 1998

STATE OF HAWAII  
UNIVERSITY OF HAWAII  
COMMUNITY COLLEGES  
LEEWARD COMMUNITY COLLEGE  
CONTINUING EDUCATION & TRAINING

Position Organization Chart

Chart VI



\*\*\*Position to be established

GENERAL FUND  
(B) SPECIAL FUNDS

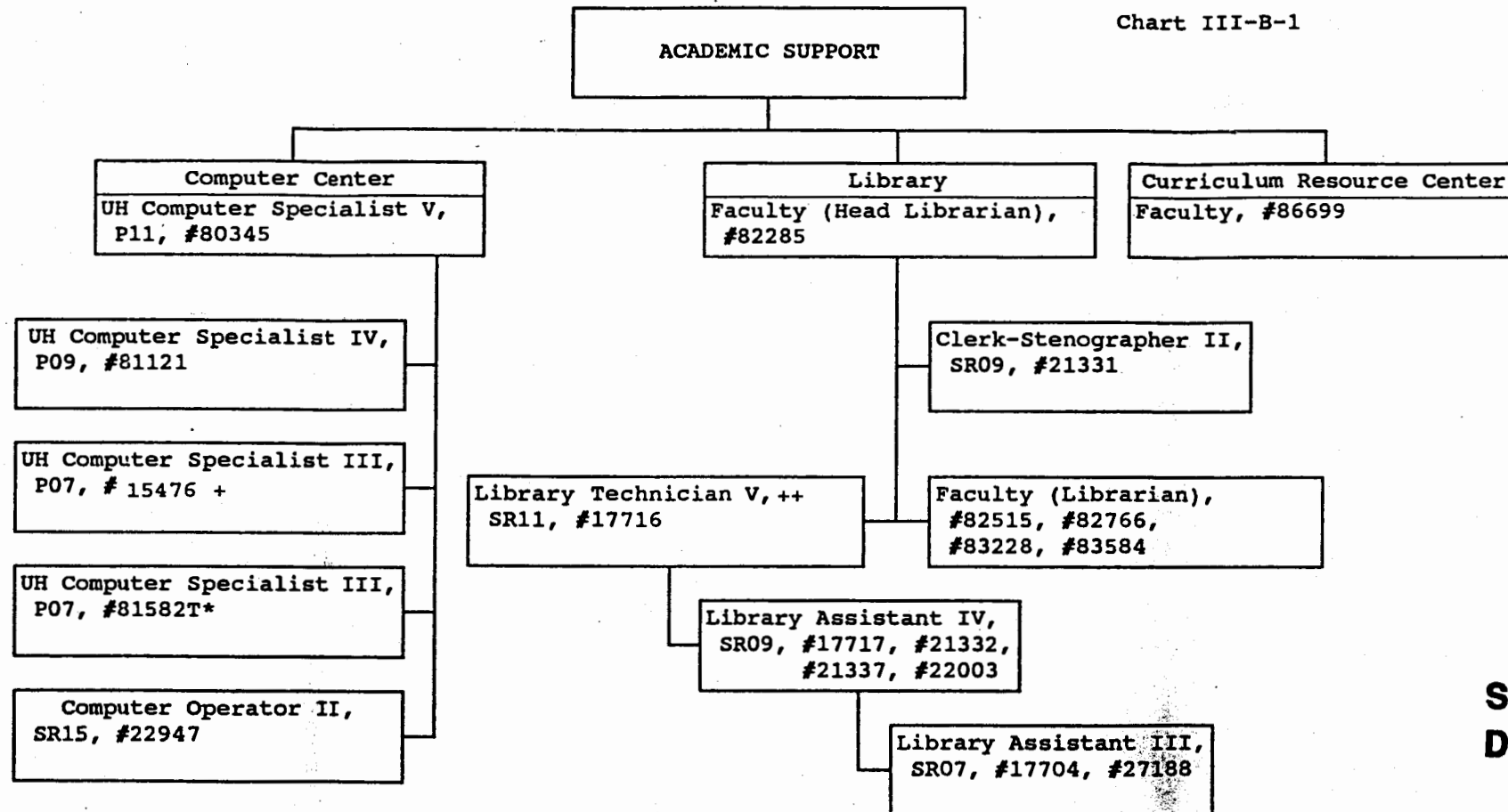
PERM  
5.50  
12.00

CHART UPDATED  
DATE JUL - 1 1998

STATE OF HAWAII  
UNIVERSITY OF HAWAII  
COMMUNITY COLLEGES  
LEEWARD COMMUNITY COLLEGE  
ACADEMIC SUPPORT

Position Organization Chart

Chart III-B-1



**SUPERSEDED**  
Date JUN - 9 1999

\* Temporary Position

+ Reallocated from UHM;  
to be redescribed.

++ #22001, Library Tech V,  
was reallocated to Hawai'i  
CC, University Center, West  
Hawai'i. Hawai'i CC to  
reorganize and reflect this  
position.

*Joseph S. Iannone*  
Senior Vice-President and Chancellor for  
Community Colleges

Date

*5/14/99*

GENERAL FUND

PERM

18.00

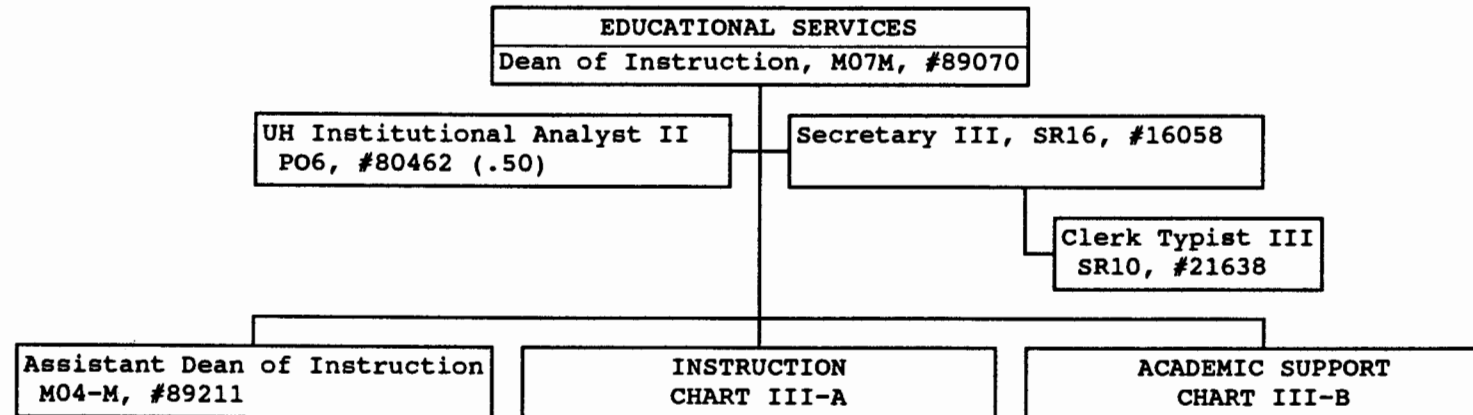
TEMP

1.00

STATE OF HAWAII  
UNIVERSITY OF HAWAII  
COMMUNITY COLLEGES  
LEEWARD COMMUNITY COLLEGE  
EDUCATIONAL SERVICES

Position Organization Chart

Chart III



**SUPERSEDED**  
Date JUN 15 1999

GENERAL FUND PERM  
4.50

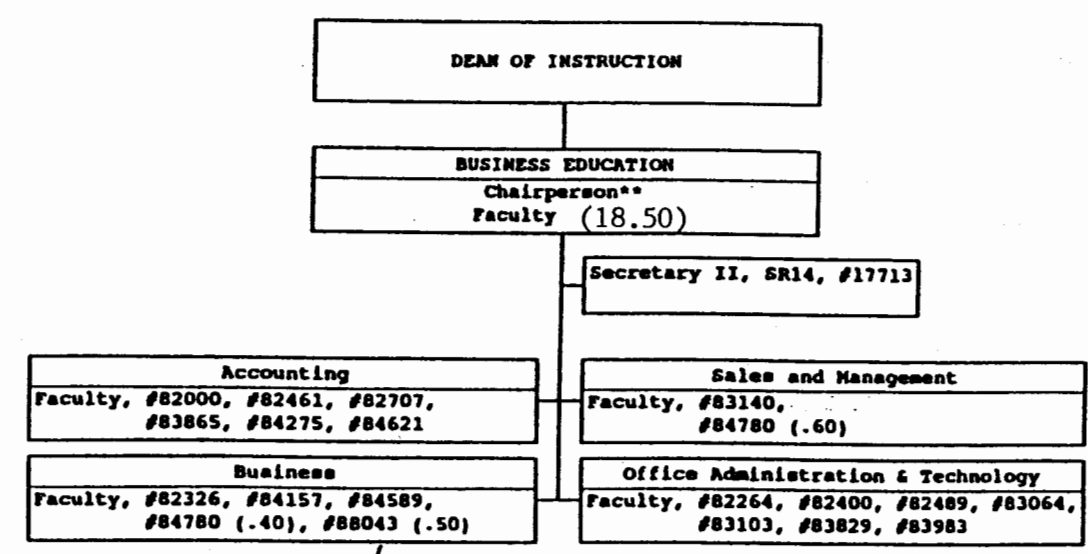
**CHART UPDATED**  
DATE JUL - 1 1998

**SUPERSEDED**  
**Date** MAY 25 1999

STATE OF HAWAII  
UNIVERSITY OF HAWAII  
COMMUNITY COLLEGES  
LEEWARD COMMUNITY COLLEGE  
INSTRUCTION

Position Organization Chart

Chart III-A-2



Jorge L. Isunada  
Senior Vice-President & Chancellor for  
Community Colleges

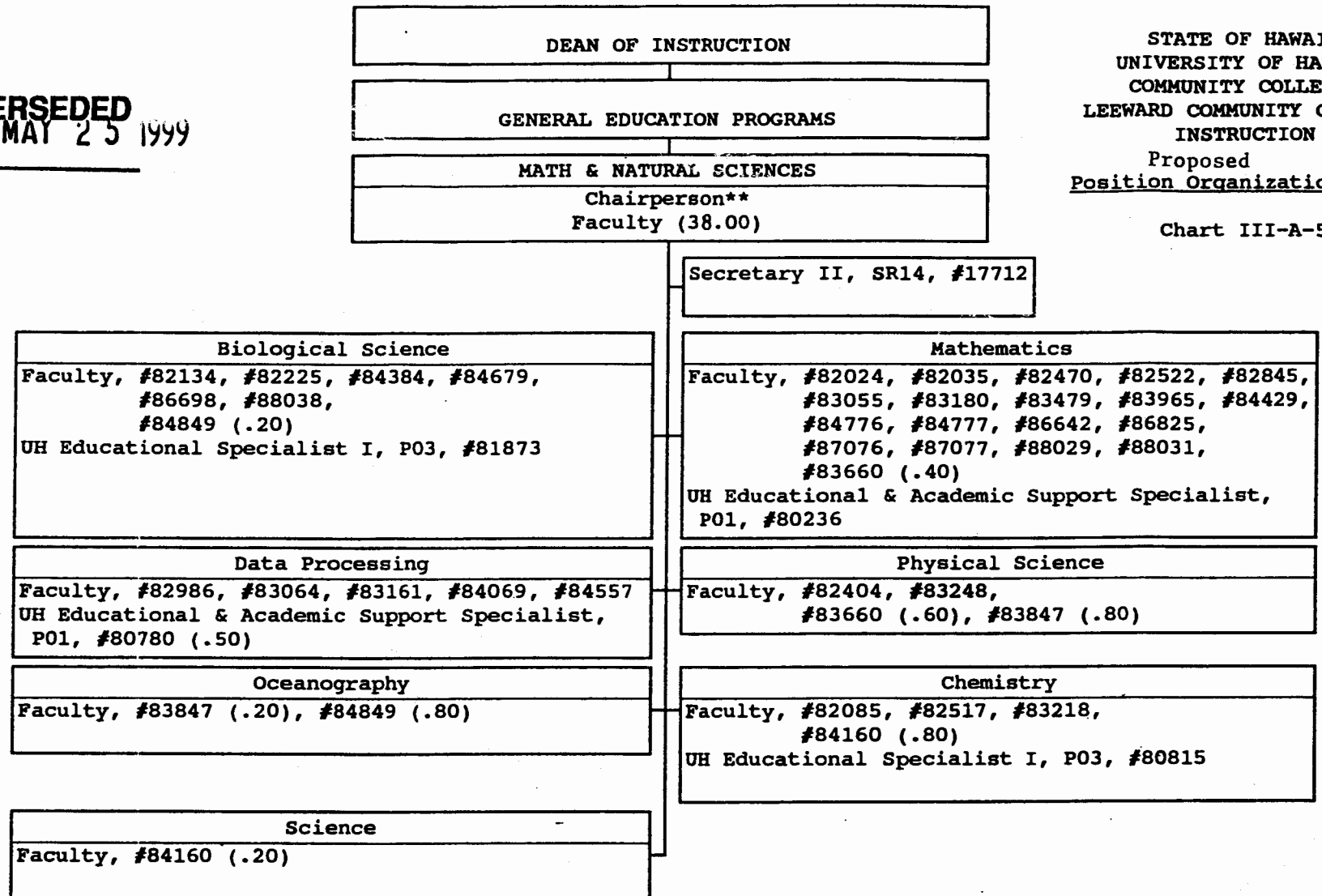
3/23/99  
Date

\*\*Chairperson is appointed from a faculty position within the unit

PERM

GENERAL FUND 19.50

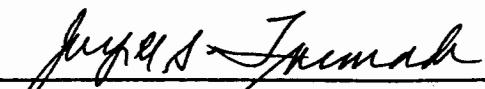
**SUPERSEDED**  
Date MAY 25 1999



STATE OF HAWAII  
UNIVERSITY OF HAWAII  
COMMUNITY COLLEGES  
LEEWARD COMMUNITY COLLEGE  
INSTRUCTION  
Proposed  
Position Organization Chart

Chart III-A-5

\*\*Chairperson is appointed from a faculty position within the unit

  
\_\_\_\_\_  
Senior Vice-President & Chancellor  
for Community Colleges

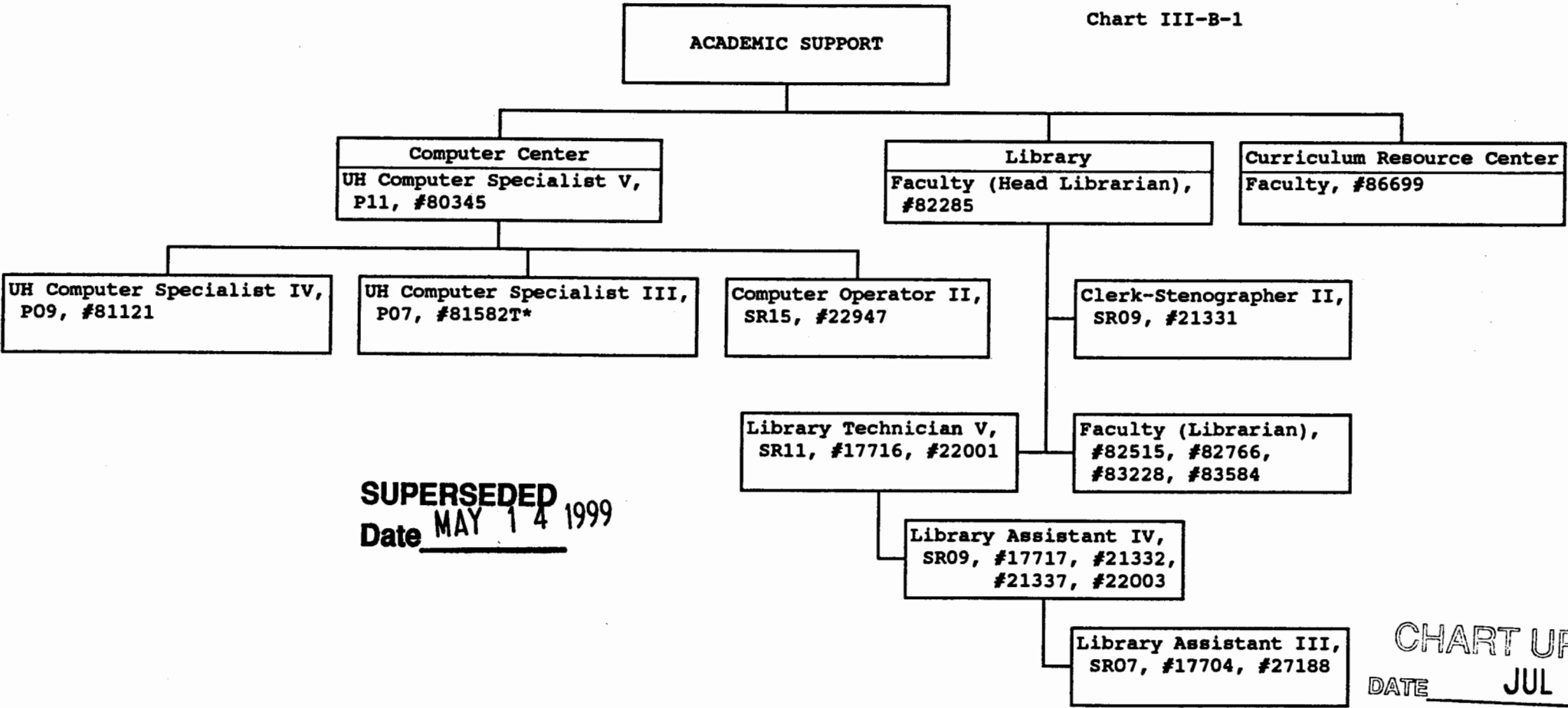
  
\_\_\_\_\_  
Date

PERM  
GENERAL FUND 42.50

STATE OF HAWAII  
UNIVERSITY OF HAWAII  
COMMUNITY COLLEGES  
LEEWARD COMMUNITY COLLEGE  
ACADEMIC SUPPORT

Position Organization Chart

Chart III-B-1



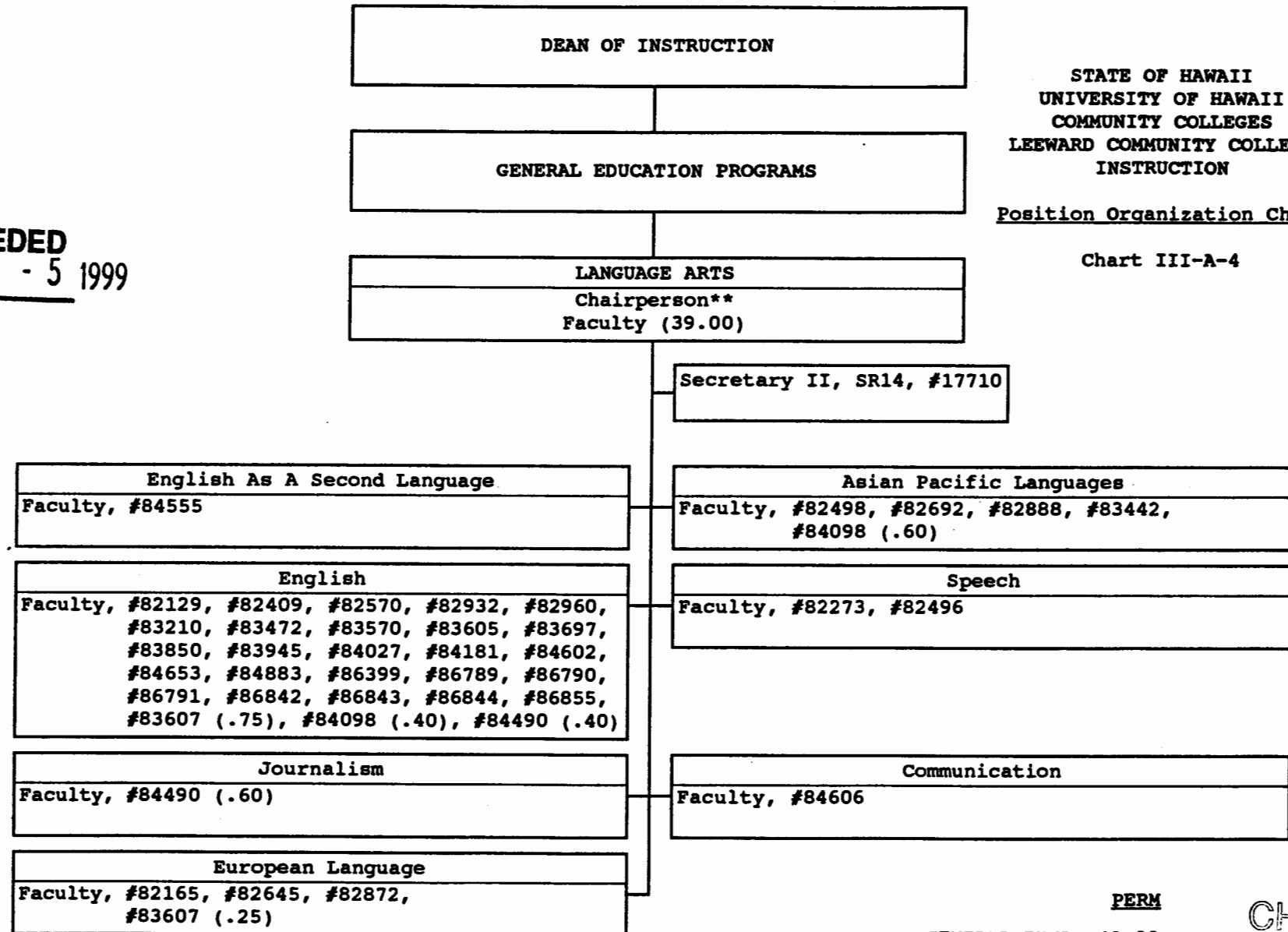
**SUPERSEDED**  
Date MAY 14 1999

**CHART UPDATED**  
DATE JUL - 1 1998

\*Temporary Position

	<u>PERM</u>	<u>TEMP</u>
GENERAL FUND	18.00	1.00

**SUPERSEDED**  
Date MAY - 5 1999



STATE OF HAWAII  
UNIVERSITY OF HAWAII  
COMMUNITY COLLEGES  
LEEWARD COMMUNITY COLLEGE  
INSTRUCTION

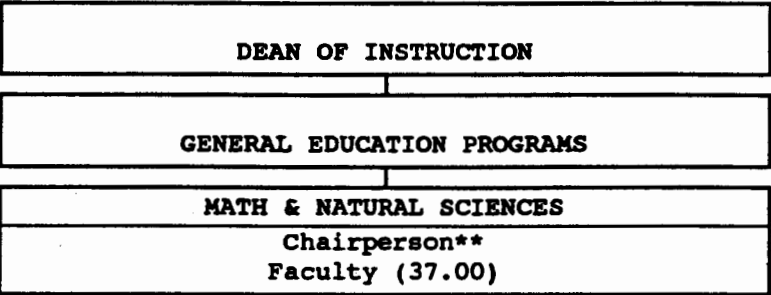
Position Organization Chart

Chart III-A-4

\*\*Chairperson is appointed from a faculty position within the unit

PERM  
GENERAL FUND 40.00

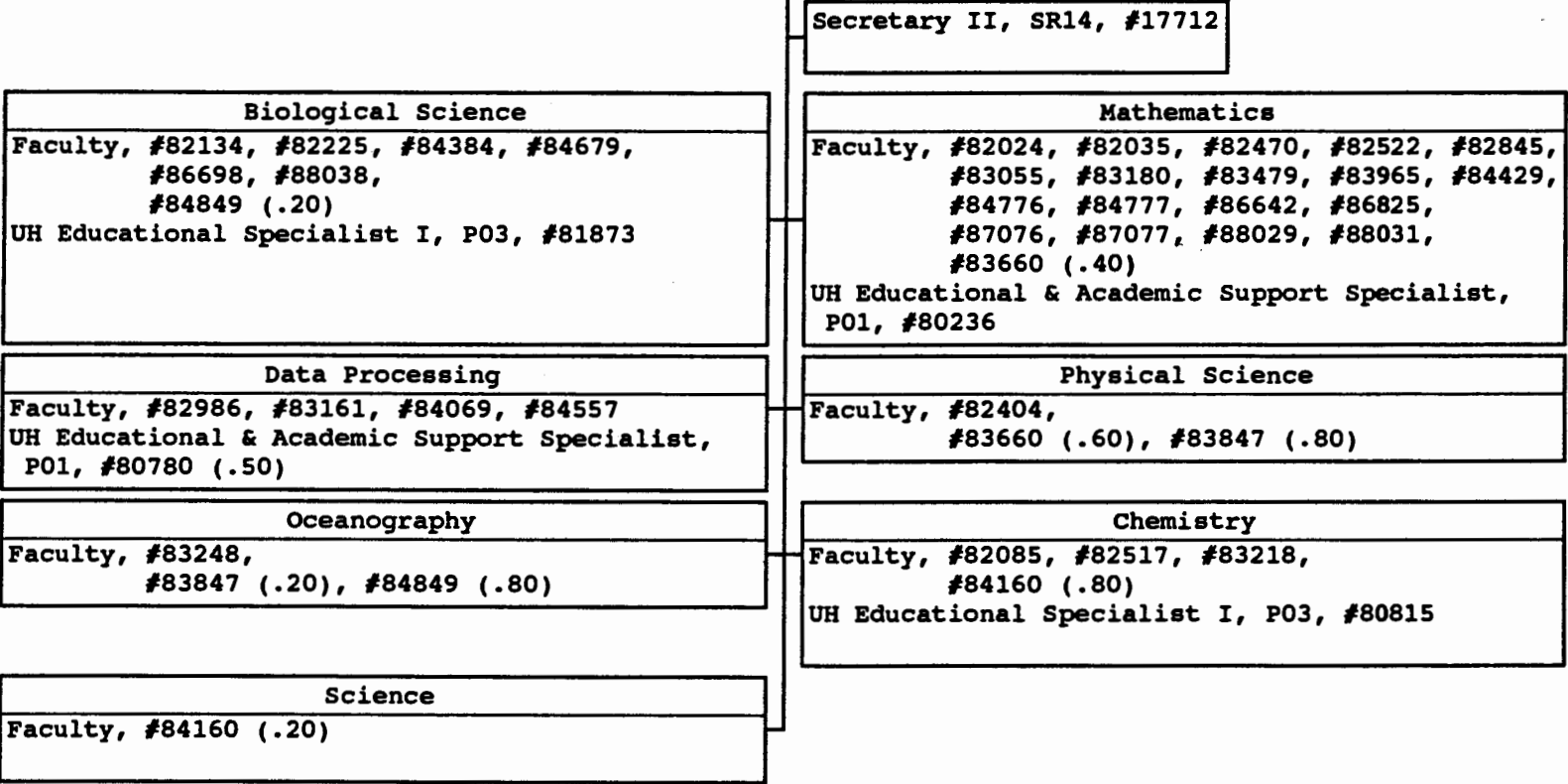
CHART UPDATED  
DATE JUL - 1 1998



STATE OF HAWAII  
UNIVERSITY OF HAWAII  
COMMUNITY COLLEGES  
LEEWARD COMMUNITY COLLEGE  
INSTRUCTION

Position Organization Chart

Chart III-A-5



SUPERSEDED  
Date APR 30 1999

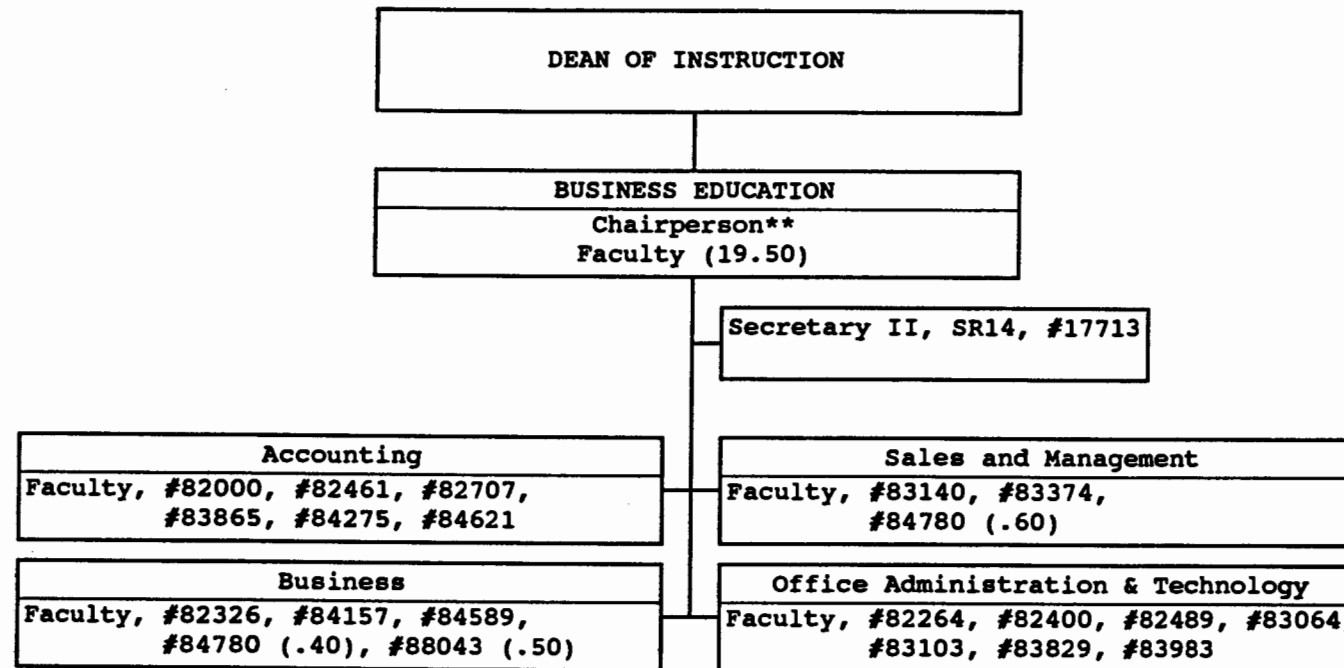
CHART UPDATED  
DATE JUL - 1 1998

\*\*Chairperson is appointed from a faculty position within the unit

STATE OF HAWAII  
UNIVERSITY OF HAWAII  
COMMUNITY COLLEGES  
LEEWARD COMMUNITY COLLEGE  
INSTRUCTION

Position Organization Chart

Chart III-A-2



**SUPERSEDED**  
Date MAR 23 1999

\*\*Chairperson is appointed from a faculty position within the unit

PERM

GENERAL FUND 20.50

CHART UPDATED  
DATE JUL - 1 1998

DEAN OF INSTRUCTION

GENERAL EDUCATION PROGRAMS

ARTS & HUMANITIES  
Chairperson\*\*  
Faculty (24.50)

Secretary II, SR14, #17711

Art  
Faculty, #82502, #82890, #84086, #88042,  
#82247 (.50), #84466 (.50)

Music  
Faculty, #82239, #84014, #84426, #87106,  
#82116 (.50), #88059 (.50)

Dance  
Faculty, #83636 (.50)

Drama & Theatre  
Faculty, #83105,  
#83181 (.50)

Philosophy  
Faculty, #82941, #83907

Religion  
Faculty, #83808

History  
Faculty, #82277, #82306, #83474,  
#83887, #84018, #84026  
#82530

Humanities  
Faculty, #82427, #84104,  
#83181 (.50)

STATE OF HAWAII  
UNIVERSITY OF HAWAII  
COMMUNITY COLLEGES  
LEEWARD COMMUNITY COLLEGE  
INSTRUCTION

Position Organization Chart

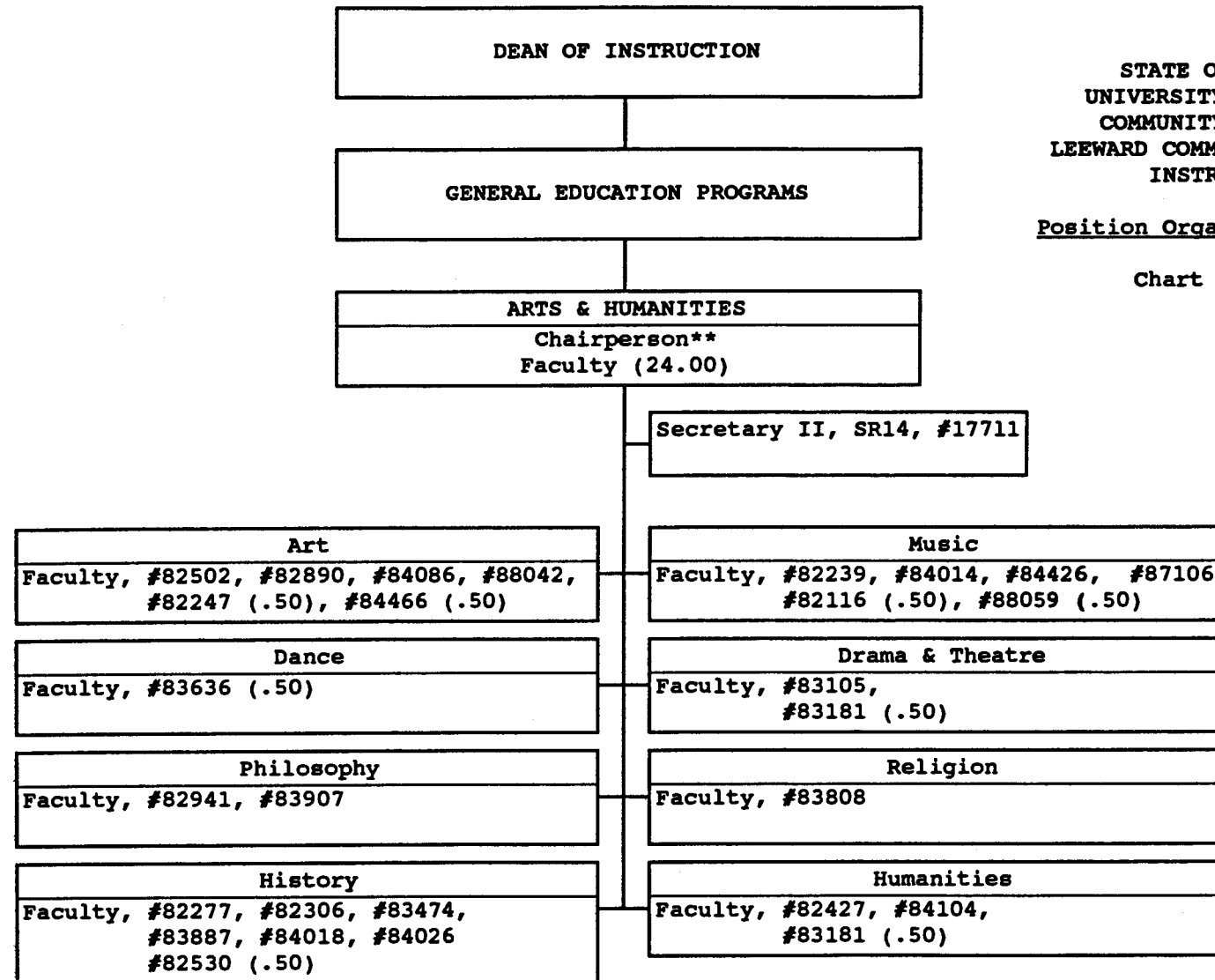
Chart III-A-3

**SUPERSEDED**  
Date MAR 23 1999

Jorge L. Imanaka 5/1/98  
Senior Vice-President & Chancellor for Date  
Community Colleges

\*\*Chairperson is appointed from a faculty position within the unit.

PERM  
GENERAL FUND 2550



STATE OF HAWAII  
UNIVERSITY OF HAWAII  
COMMUNITY COLLEGES  
LEEWARD COMMUNITY COLLEGE  
INSTRUCTION

Position Organization Chart

Chart III-A-3

**SUPERSEDED**  
Date DEC - 1 1998

\*\*Chairperson is appointed from a faculty position within the unit.

PERM  
GENERAL FUND 25.00

**CHART UPDATED**  
DATE JUL - 1 1998