

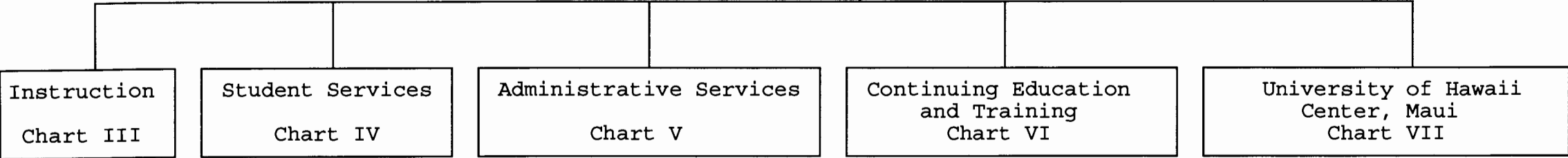
Office of the Senior Vice President  
and  
Chancellor for Community Colleges

STATE OF HAWAII  
UNIVERSITY OF HAWAII  
MAUI COMMUNITY COLLEGE

Organization Chart

Chart I

Office of the Provost  
Chart II



		<u>Perm</u>	<u>Temp</u>
	General Fund	157.50	2.00
(B)	Special Funds	6.50	
(W)	Revolving Funds	3.00	

CHART UPDATED  
JUL - 1 1998

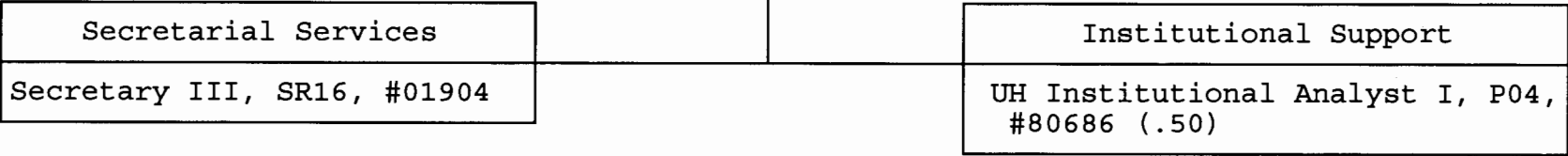
DATE \_\_\_\_\_

OFFICE OF THE PROVOST
Provost, M10E, #89063

STATE OF HAWAII  
 UNIVERSITY OF HAWAII  
 COMMUNITY COLLEGES  
 MAUI COMMUNITY COLLEGE  
 OFFICE OF THE PROVOST

Position Organization Chart

Chart II



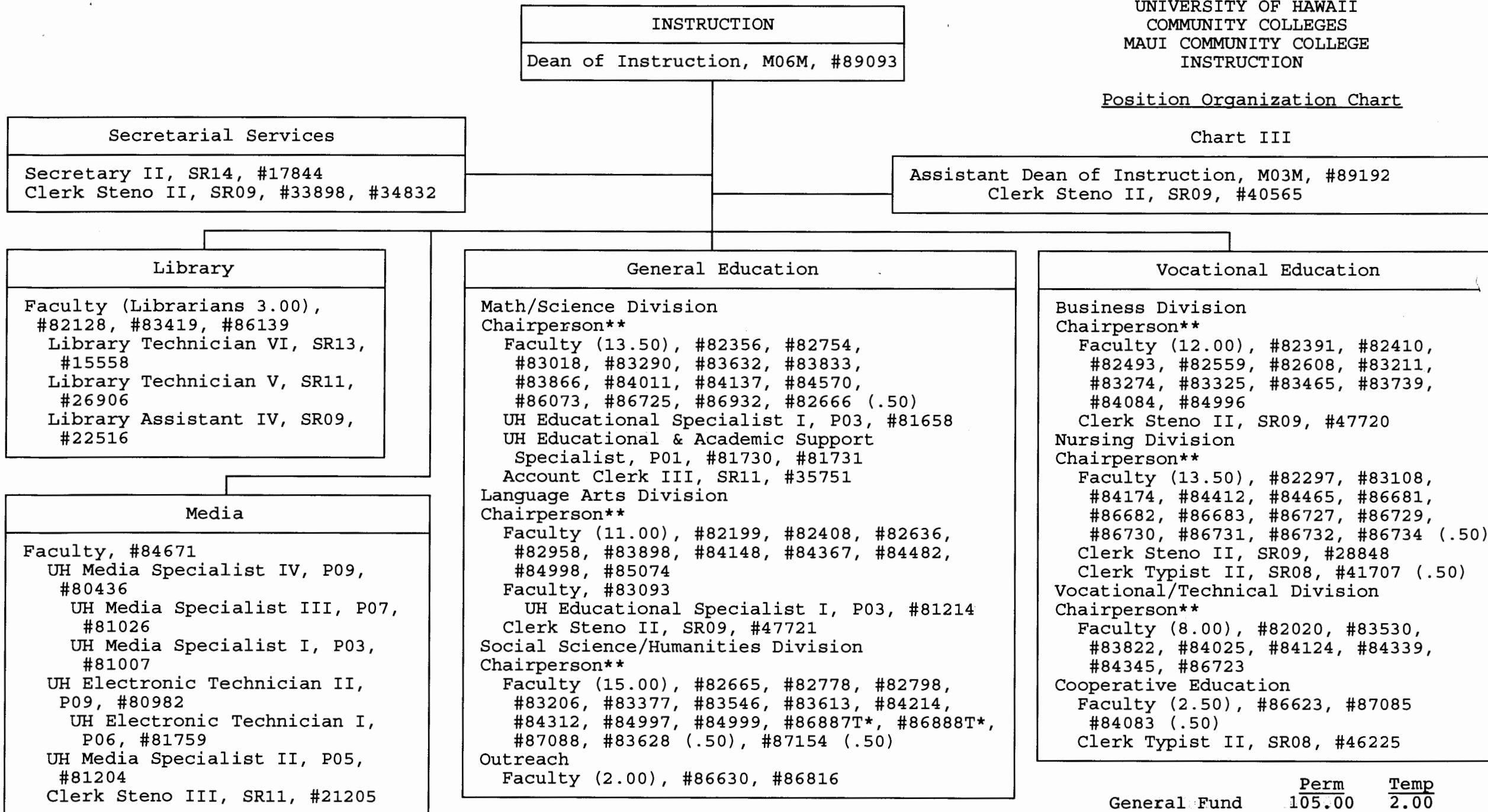
General Fund      Perm  
                          2.50

CHART UPDATED  
 DATE JUL - 1 1998

STATE OF HAWAII  
UNIVERSITY OF HAWAII  
COMMUNITY COLLEGES  
MAUI COMMUNITY COLLEGE  
INSTRUCTION

Position Organization Chart

Chart III



	<u>Perm</u>	<u>Temp</u>
General Fund	105.00	2.00

CHART UPDATED

DATE JUL - 1 1998

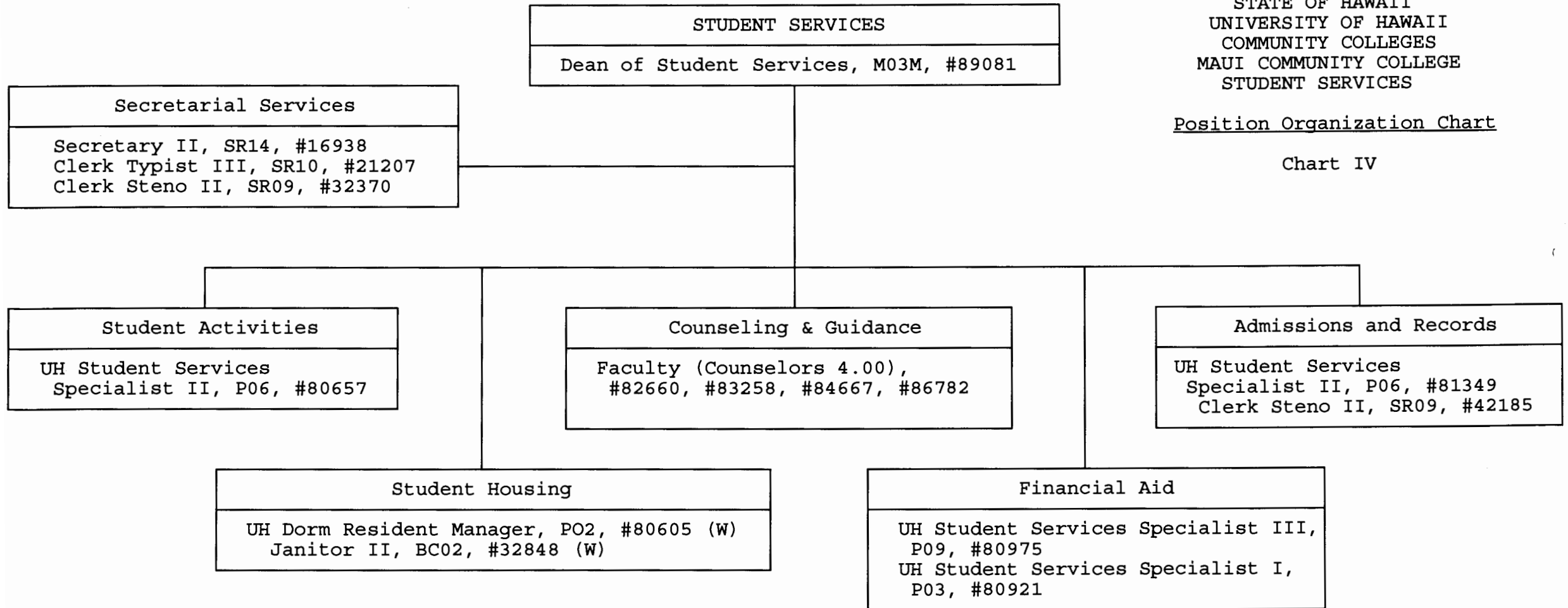
\*Temporary Position

\*\*Chairperson is appointed from among instructional positions within the division.

STATE OF HAWAII  
UNIVERSITY OF HAWAII  
COMMUNITY COLLEGES  
MAUI COMMUNITY COLLEGE  
STUDENT SERVICES

Position Organization Chart

Chart IV



	<u>Perm</u>
General Fund	13.00
(W) Revolving Funds	2.00

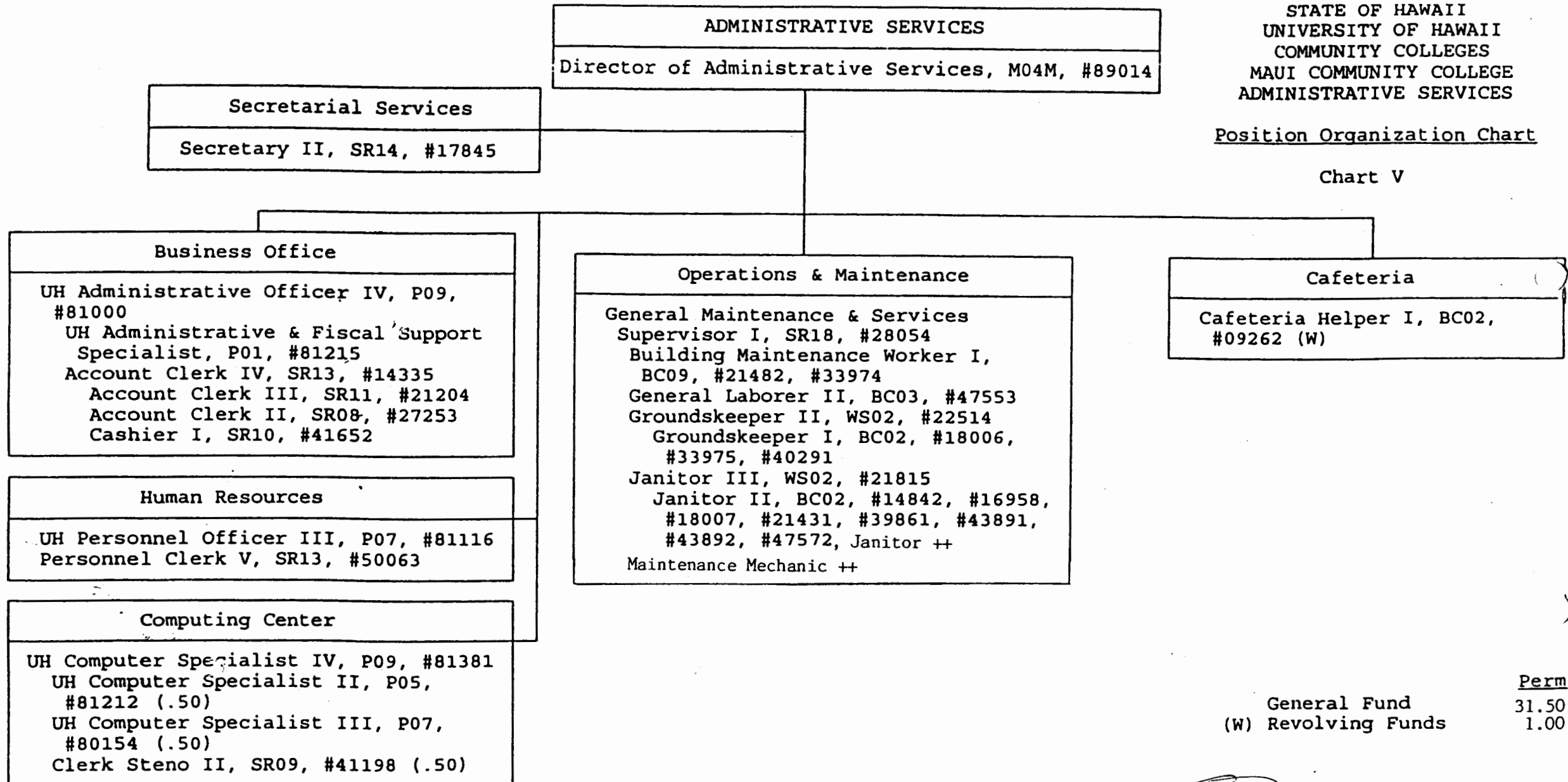
CHART UPDATED

DATE JUL - 1 1998

STATE OF HAWAII  
UNIVERSITY OF HAWAII  
COMMUNITY COLLEGES  
MAUI COMMUNITY COLLEGE  
ADMINISTRATIVE SERVICES

Position Organization Chart

Chart V



++Position count reallocated from UHM.

General Fund  
(W) Revolving Funds

Perm  
31.50  
1.00

APPROVED/DISAPPROVED:  
*[Signature]* 12/17/98  
SENIOR VICE PRESIDENT/ CHANCELLOR FOR COMMUNITY COLLEGES  
DATE

CONTINUING EDUCATION AND TRAINING
Director of Continuing Education and Training, M03M, #89179

STATE OF HAWAII  
UNIVERSITY OF HAWAII  
COMMUNITY COLLEGES  
MAUI COMMUNITY COLLEGE  
CONTINUING EDUCATION  
AND TRAINING

Position Organization Chart

Chart VI

Secretarial Services
Secretary II, SR14, #22517 Clerk Steno II, SR09, #42457 (B)

Non-Credit Programs
UH Educational Specialist III, PO9, #81045 (.50), #80075 (.50) (B), #81208 (B) UH Educational Specialist II, P06, #81884 (B) Faculty (2.00), #86912, #86914 UH Educational Specialist II, P06, #80244 (B) UH Educational Specialist I, P03, #81267 (B) Clerk III, SR08, #50018 (B)

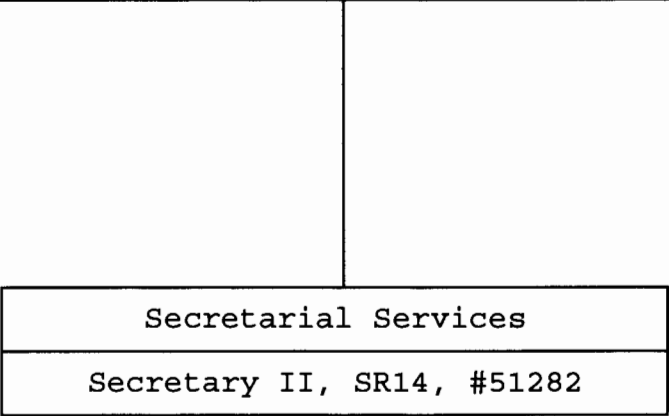
Apprenticeship
Faculty, #86905

CHART UPDATED

DATE JUL - 1 1998

	<u>Perm</u>
General Fund	5.50
(B) Special Funds	6.50

UNIVERSITY OF HAWAII CENTER, MAUI
Director of University of Hawaii Center, Maui, M05-M, #89014



STATE OF HAWAII  
 UNIVERSITY OF HAWAII  
 MAUI COMMUNITY COLLEGE  
 UNIVERSITY OF HAWAII CENTER, MAUI  
Position Organization Chart  
 Chart VII

CHART UPDATED  
 DATE JUL - 1 1998

	<u>Perm</u>
General Fund	2.00

STATE OF HAWAII  
UNIVERSITY OF HAWAII  
COMMUNITY COLLEGES  
MAUI COMMUNITY COLLEGE  
ADMINISTRATIVE SERVICES

Position Organization Chart

Chart V

ADMINISTRATIVE SERVICES
Director of Administrative Services, M04M, #89014

Secretarial Services
Secretary II, SR14, #17845

Business Office
UH Administrative Officer IV, P09, #81000 UH Administrative & Fiscal Support Specialist, P01, #81215 Account Clerk IV, SR13, #14335 Account Clerk III, SR11, #21204 Account Clerk II, SR08, #27253 Cashier I, SR10, #41652
Human Resources
UH Personnel Officer III, P07, #81116 Personnel Clerk V, SR13, #50063
Computing Center
UH Computer Specialist IV, P09, #81381 UH Computer Specialist II, P05, #81212 (.50) UH Computer Specialist III, P07, #80154 (.50) Clerk Steno II, SR09, #41198 (.50)

Operations & Maintenance
General Maintenance & Services Supervisor I, SR18, #28054 Building Maintenance Worker I, BC09, #21482, #33974 General Laborer II, BC03, #47553 Groundskeeper II, WS02, #22514 Groundskeeper I, BC02, #18006, #33975, #40291 Janitor III, WS02, #21815 Janitor II, BC02, #14842, #16958, #18007, #21431, #39861, #43891, #43892, #47572

Cafeteria
Cafeteria Helper I, BC02, #09262 (W)

**SUPERSEDED**  
Date DEC 17 1998

General Fund	<u>Perm</u> 29.50
(W) Revolving Funds	1.00

CHART UPDATED  
DATE JUL - 1 1998