

STATE OF HAWAII
UNIVERSITY OF HAWAII
COMMUNITY COLLEGES
WINDWARD COMMUNITY COLLEGE

Organization Chart

Chart I

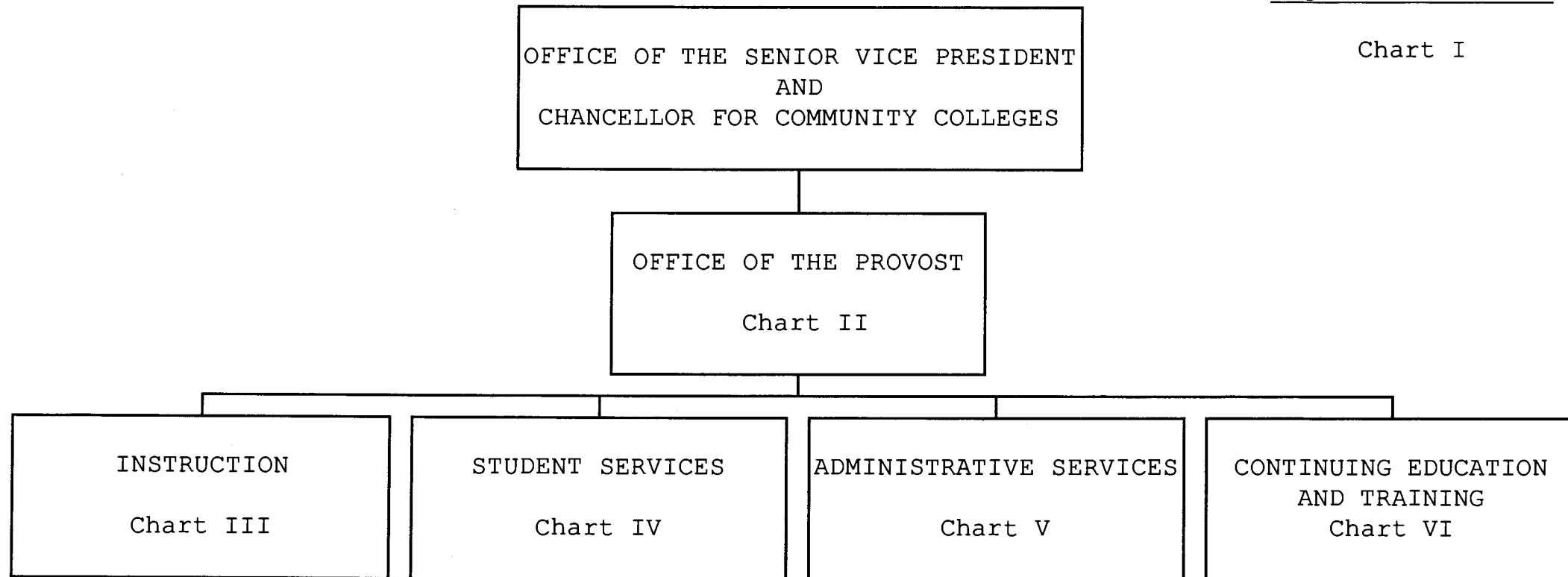


CHART UPDATED

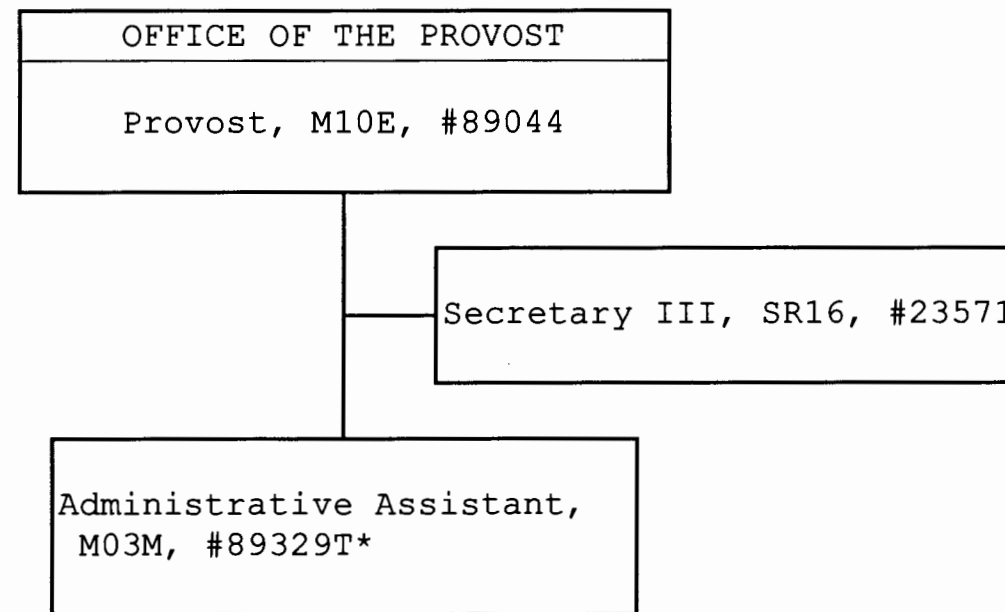
DATE JUL - 1 1998

	<u>Perm</u>	<u>Temp</u>
General Fund	102.40	1.00

STATE OF HAWAII
UNIVERSITY OF HAWAII
COMMUNITY COLLEGES
WINDWARD COMMUNITY COLLEGE
OFFICE OF THE PROVOST

Position Organization Chart

Chart II



*Temporary Position

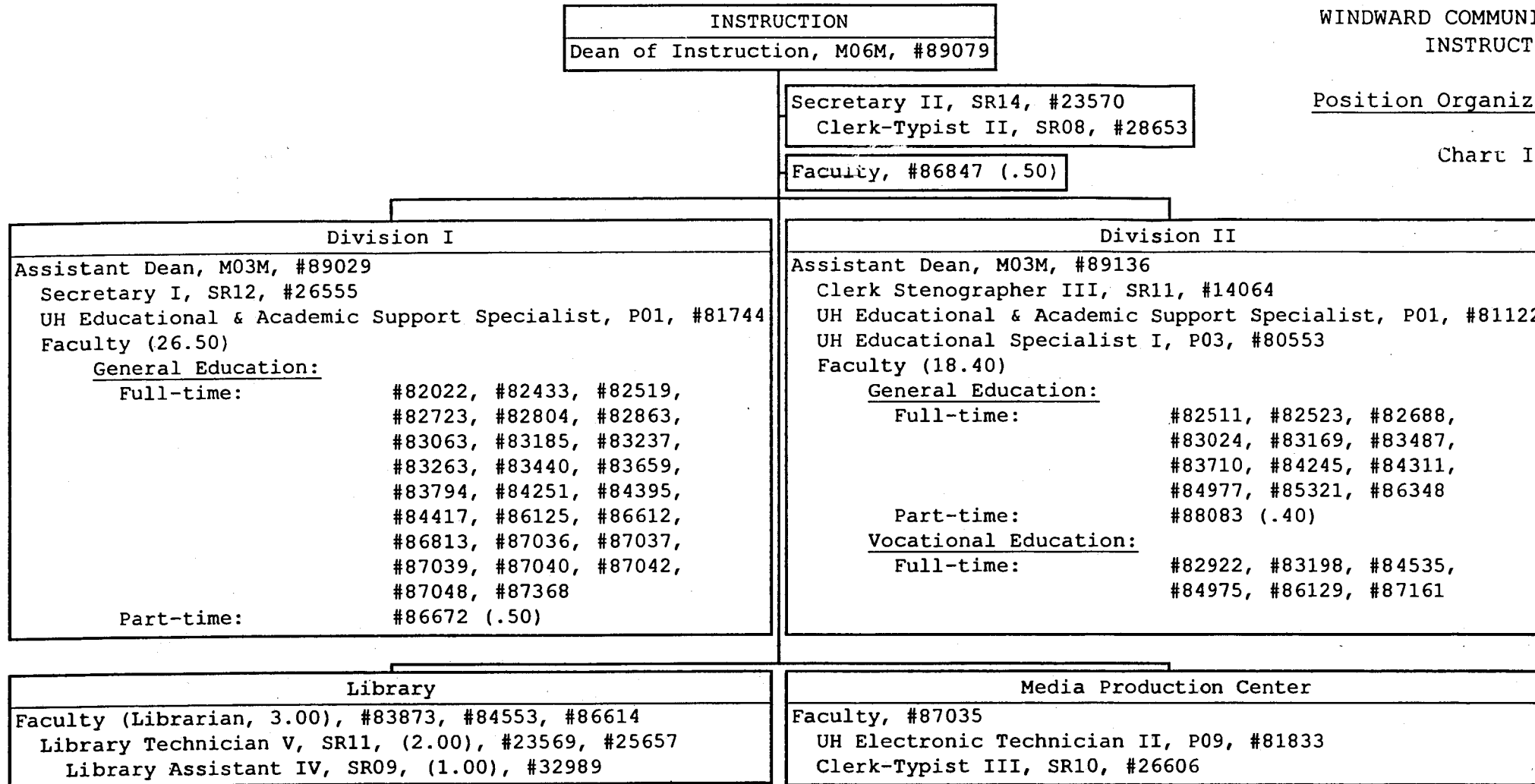
CHART UPDATED
DATE JUL - 1 1998

	<u>Perm</u>	<u>Temp</u>
General Fund	2.00	1.00

STATE OF HAWAII
UNIVERSITY OF HAWAII
COMMUNITY COLLEGES
WINDWARD COMMUNITY COLLEGE
INSTRUCTION

Position Organization Chart

Chart III

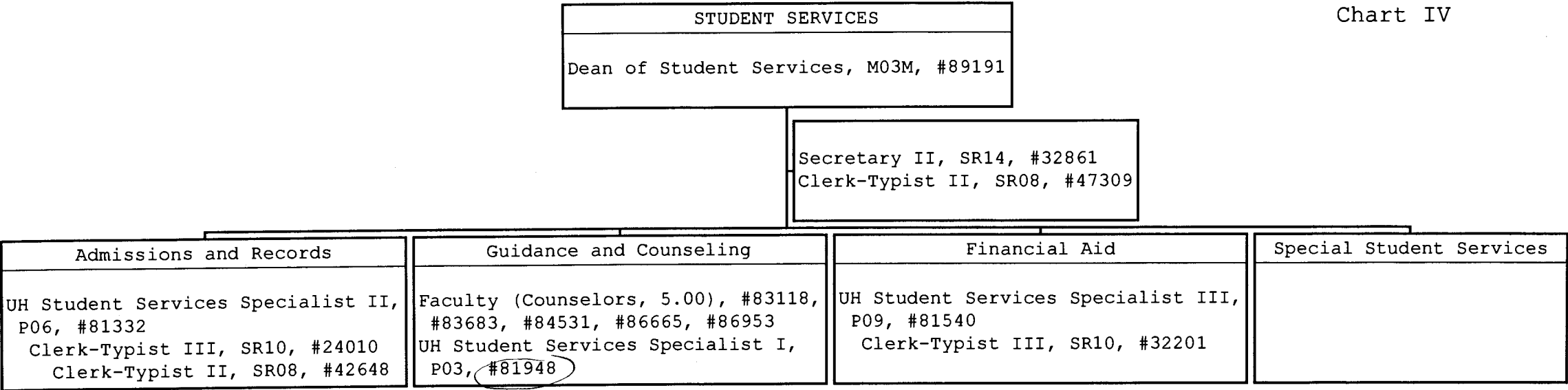


Perm
General Fund 64.40
Approved by Joyce S. Iimaka 4/14/89
Date
Title _____

STATE OF HAWAII
UNIVERSITY OF HAWAII
COMMUNITY COLLEGES
WINDWARD COMMUNITY COLLEGE
STUDENT SERVICES

Position Organization Chart

Chart IV



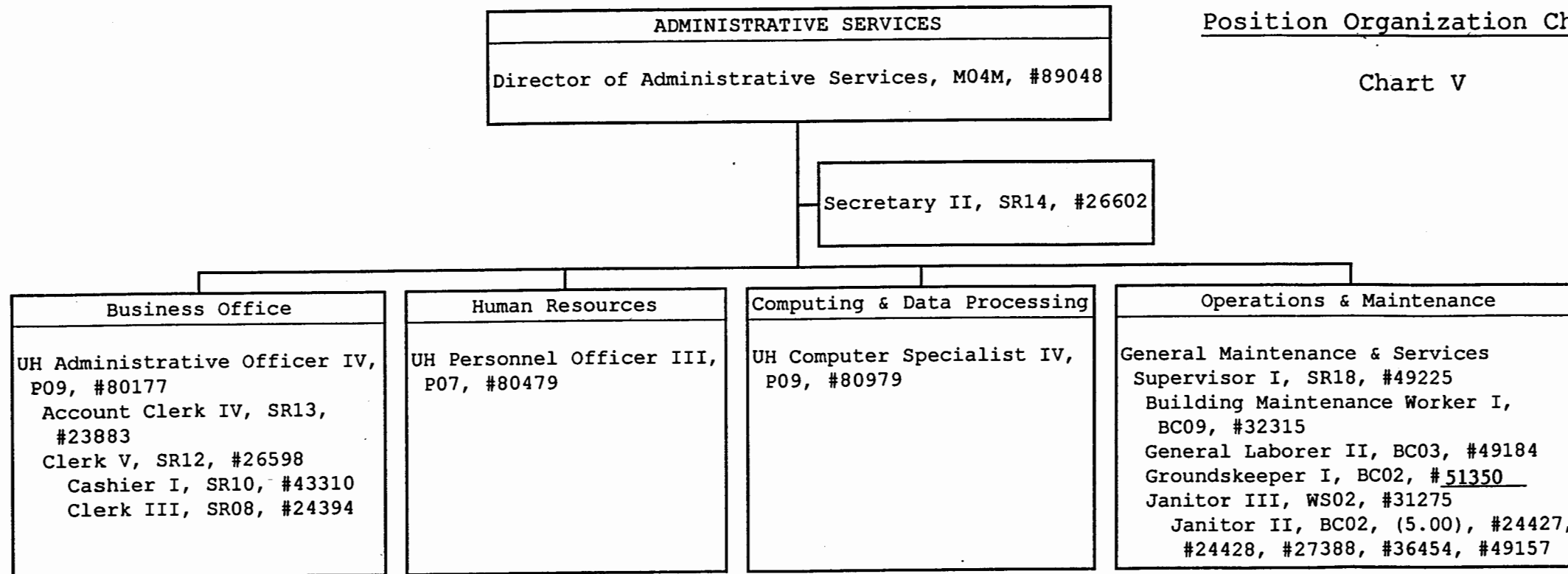
↓ RE ASSIGNED To HAWAII CC
Jan. 12, 1999

CHART UPDATED
DATE JUL - 1 1998
General Fund Perm 14.00

STATE OF HAWAII
UNIVERSITY OF HAWAII
COMMUNITY COLLEGES
WINDWARD COMMUNITY COLLEGE
ADMINISTRATIVE SERVICES

Position Organization Chart

Chart V



General Fund 19.00 ^{Perm}

Approved by: Joyce S. Isaacson DEC - 1 1998
Title: Chancellor for Community College

STATE OF HAWAII
UNIVERSITY OF HAWAII
COMMUNITY COLLEGES
WINDWARD COMMUNITY COLLEGE
CONTINUING EDUCATION AND TRAINING

Position Organization Chart

Chart VI

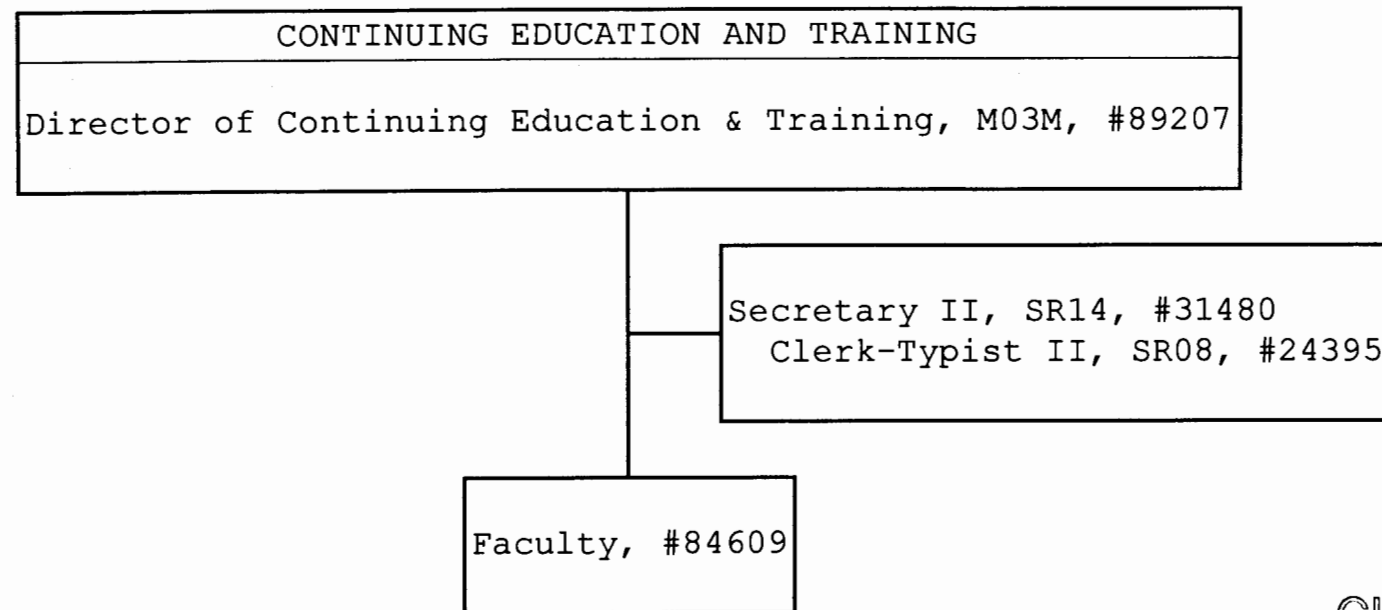


CHART UPDATED

DATE JUL - 1 1998
General Fund Perm
4.00

STATE OF HAWAII
UNIVERSITY OF HAWAII
COMMUNITY COLLEGES
WINDWARD COMMUNITY COLLEGE
INSTRUCTION

Position Organization Chart

Chart III

SUPERSEDED
Date APR 14 1999

INSTRUCTION	
Dean of Instruction, M06M, #89079	
Secretary II, SR14, #23570 Clerk-Typist II, SR08, #28653 Faculty, #86847 (.50)	
Division I	Division II
Assistant Dean, M03M, #89029 Secretary I, SR12, #26555 UH Educational & Academic Support Specialist, P01, #81744 Faculty (26.50) <u>General Education:</u> Full-time: #82022, #82433, #82519, #82723, #82804, #82863, #83063, #83185, #83237, #83263, #83440, #83659, #83794, #84251, #84395, #84417, #86125, #86612, #86813, #87036, #87037, #87039, #87040, #87042, #87048, #87368 Part-time: #86672 (.50)	Assistant Dean, M03M, #89136 Clerk Stenographer III, SR11, #14064 UH Educational & Academic Support Specialist, P01, #81122 UH Educational Specialist I, P03, #80553 Faculty (18.40) <u>General Education:</u> Full-time: #82511, #82523, #82688, #83024, #83169, #83487, #83710, #84245, #84311, #84977, #85321, #86348 Part-time: #88083 (.40) <u>Vocational Education:</u> Full-time: #82922, #83198, #84535, #84975, #86129, #87161
Library	Media Production Center
Faculty (Librarian, 3.00), #83873, #84553, #86614 Library Technician V, SR11, (2.00), #23569, #25657 Library Assistant IV, SR09, (2.00), #24011, #32989	Faculty, #87035 UH Electronic Technician II, P09, #81833 Clerk-Typist III, SR10, #26606

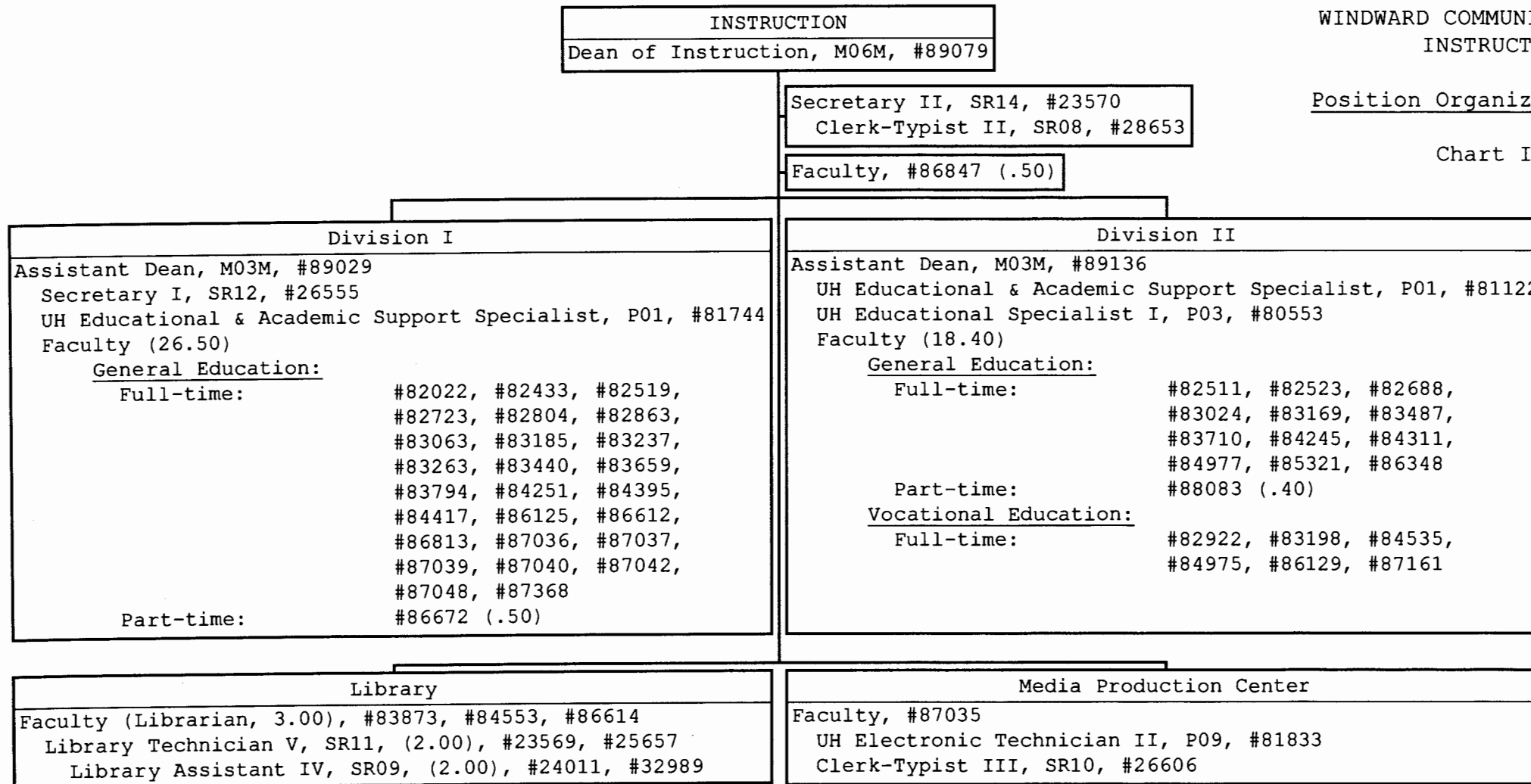
General Fund Perm 65.40
Approved by: [Signature]
Title: Chancellor for CC

DEC 17 1998

STATE OF HAWAII
UNIVERSITY OF HAWAII
COMMUNITY COLLEGES
WINDWARD COMMUNITY COLLEGE
INSTRUCTION

Position Organization Chart

Chart III



SUPERSEDED

Date DEC 17 1998

CHART UPDATED

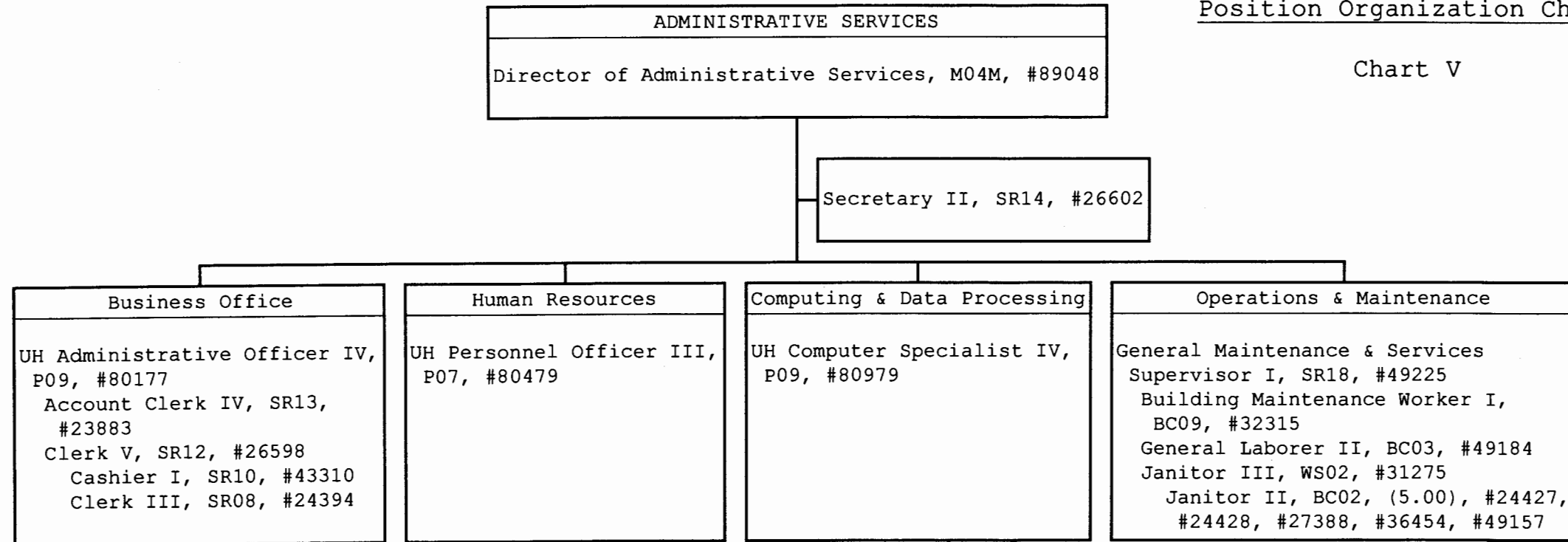
DATE JUL - 1 1998

General Fund Perm
64.40

STATE OF HAWAII
UNIVERSITY OF HAWAII
COMMUNITY COLLEGES
WINDWARD COMMUNITY COLLEGE
ADMINISTRATIVE SERVICES

Position Organization Chart

Chart V



SUPERSEDED
Date DEC - 1 1998

CHART UPDATED
DATE JUL - 1 1998 Perm
General Fund 18.00