

STATE OF HAWAII  
UNIVERSITY OF HAWAII AT MANOA  
SENIOR VICE PRESIDENT FOR RESEARCH AND  
DEAN OF THE GRADUATE DIVISION  
CURRICULUM RESEARCH & DEVELOPMENT  
GROUP

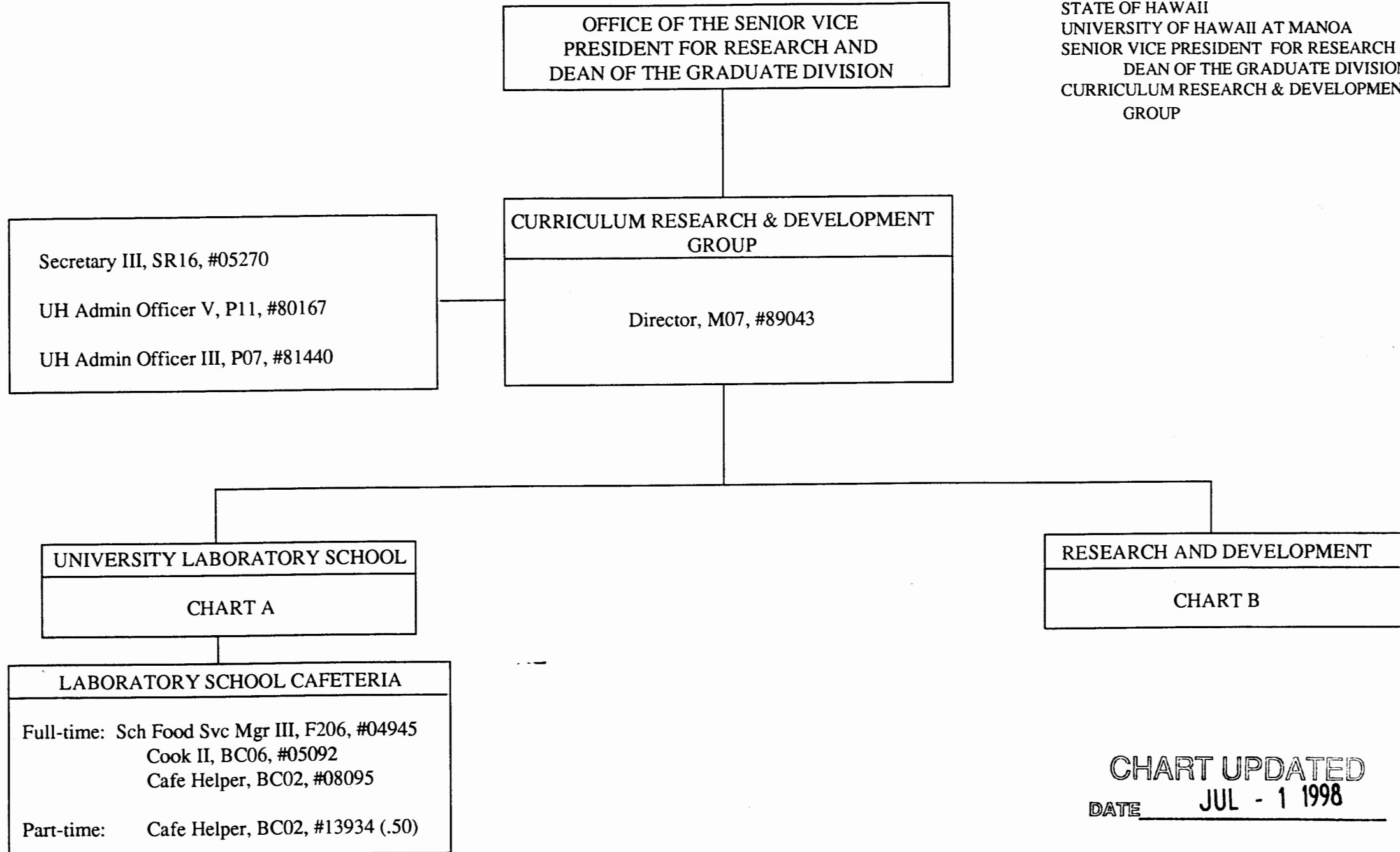


CHART UPDATED  
DATE JUL - 1 1998

OFFICE OF THE SENIOR VICE  
PRESIDENT FOR RESEARCH AND  
DEAN OF THE GRADUATE DIVISION

CURRICULUM RESEARCH &  
DEVELOPMENT GROUP

Director

STATE OF HAWAII  
UNIVERSITY OF HAWAII AT MANOA  
SENIOR VICE PRESIDENT FOR RESEARCH AND  
DEAN OF THE GRADUATE DIVISION  
CURRICULUM RESEARCH & DEVELOPMENT  
GROUP

CHART A

| UNIVERSITY LABORATORY SCHOOL   |
|--|
| Admintr-Univ Lab Sch, M05, #89257 (.90)  |
| Secretary II, SR14, #00783<br>Clerk-Typist II, SR08, #36690  |
| Instructional Positions (1.20)   |
| Part-time: #82154 (.20), #82160 (.15), #82793 (.20), #83227 (.05), #84377 (.30), #84608 (.10), #85221 (.20)  |
| Administrative, Professional, Technical Positions (14.35)  |
| Full-time: UH Ed Assoc V, P11, #80480<br>UH Ed Assoc IV, P09, #81170<br>UH Ed Assoc II, P05, #80476  |
| Part-time: UH Ed Assoc VI, P13, #80435 (.15), #80470 (.20)<br>UH Ed Assoc V, P11, #80418 (.40), #80466 (.20), #80474 (.40), #80482 (.20)<br>UH Ed Assoc IV, P09, #77012 (.80), #80433 (.85), #80434 (.95), #80472 (.50), #80484 (.90), #80491 (.35)<br>UH Ed Assoc III, P07, #80465 (.60), #80468 (.15), #80481 (.90), #80483 (.30), #80849 (.80), #80917 (.15)<br>UH Ed Assoc II, P05, #80494 (.95), #80993 (.80)<br>UH Ed Assoc I, P03, #80464 (.80) |

CHART UPDATED  
JUL - 1 1998  
DATE \_\_\_\_\_

OFFICE OF THE SENIOR VICE  
PRESIDENT FOR RESEARCH AND  
DEAN OF THE GRADUATE DIVISION

CURRICULUM RESEARCH &  
DEVELOPMENT GROUP

Director

STATE OF HAWAII  
UNIVERSITY OF HAWAII AT MANOA  
SENIOR VICE PRESIDENT FOR RESEARCH AND  
DEAN OF THE GRADUATE DIVISION  
CURRICULUM RESEARCH & DEVELOPMENT  
GROUP

CHART B

RESEARCH AND DEVELOPMENT

Instructional Positions (12.30)

Full-time: #82272, #82387, #82950, #83951, #84031, #84077

Part-time: #82154 (.80), #82160 (.85), #82793 (.80), #83227 (.95), #84377 (.70), #84608 (.90), #85221 (.80), 85236 (.50)

Admintr-Univ Lab Sch, M05, #89257 (.10)

Administrative, Professional, Technical Positions (16.65)

Full-time: UH Ed Assoc VI, P13, #80443, #80486, #80495, #81169

UH Ed Assoc V, P11, #80440

UH Ed Assoc IV, P09, #80228

UH Ed Spec IV, P12, #80420

Part-time: UH Ed Assoc VI, P13, #80435 (.85), #80470 (.80)

UH Ed Assoc V, P11, #80418 (.60), #80466 (.80), #80474 (.60), #80482 (.80)

UH Ed Assoc IV, P09, #77012 (.20), #80433 (.15), #80434 (.05), #80472 (.50), #80484 (.10), #80491 (.65)

UH Ed Assoc III, P07, #80465 (.40), #80468 (.85), #80481 (.10), #80483 (.70), #80849 (.20), #80917 (.85)

UH Ed Assoc II, P05, #80494 (.05), #80993 (.20)

UH Ed Assoc I, P03, #80464 (.20)

Clerk-Typist III, SR10, #35206

CHART UPDATED  
DATE JUL - 1 1998