

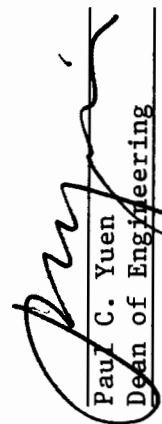
STATE OF HAWAII
UNIVERSITY OF HAWAII
UNIVERSITY OF HAWAII AT MANOA
COLLEGE OF ENGINEERING (100.00)*

Organization Chart
Chart I

Revised August 12, 1996

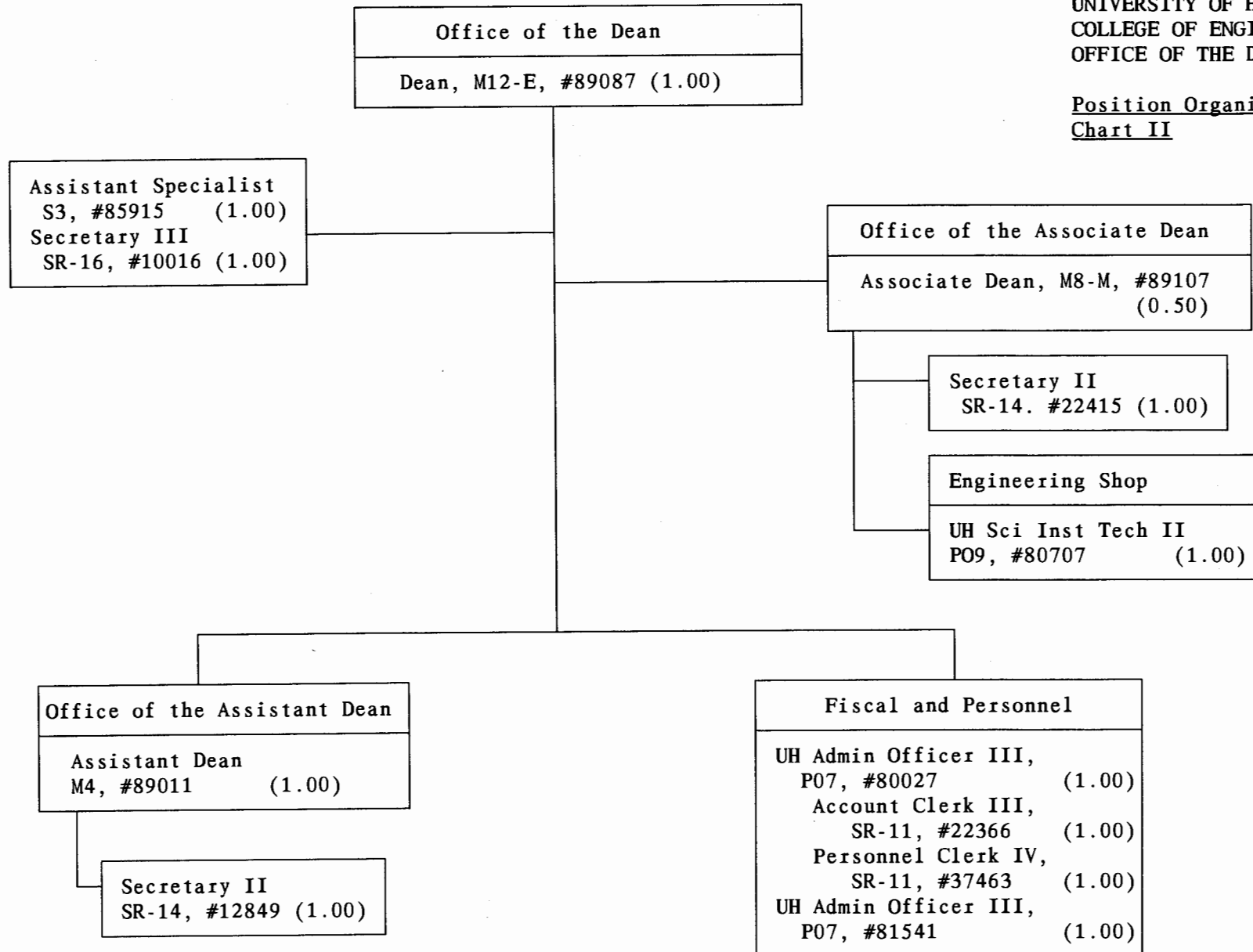
*Total General Fund Position Count
**Advisory Committees

CHART UPDATED
DATE JUL - 1 1998

Approved: 
Paul C. Yuen
Dean of Engineering
Title: Dean of Engineering
Date: July 1, 1998

STATE OF HAWAII
UNIVERSITY OF HAWAII
UNIVERSITY OF HAWAII AT MANOA
COLLEGE OF ENGINEERING
OFFICE OF THE DEAN (11.50)*

Position Organization Chart
Chart II



Paul C. Yuen
Paul C. Yuen
Dean of Engineering
July 1, 1998

CHART UPDATED
JUL - 1 1998
DATE

Approved:
Title:
Date:

Revised August 12, 1996

*General Fund Position Count

Office of the Dean

STATE OF HAWAII
UNIVERSITY OF HAWAII AT MANOA
COLLEGE OF ENGINEERING
INSTRUCTIONAL DEPARTMENTS (88.50)*
Position Organization Chart
Chart III

Department of Civil Engineering	Department of Electrical Engineering	Department of Mechanical Engineering	Computer Facility
Chairman (Appointed from Instructional Positions) Secretary II, SR-14, #15409 (1.00) Clk-Steno II, SR-09, #18019 (1.00) UH Sci Instrument Tech II, P09, #81111 (1.00) UH Research Associate V, P09, #81197 (1.00) Instructional Positions (22.00) <u>Full Time:</u> #82351, 82367, 82566, 82614, 82647, 82760, 82783, 82844, 82966, 83019, 83352, 83630, 83762, 83876, 84290, 84299, 84334, 84363, 84548, 84902, 85355 <u>Part Time:</u> #84672 (0.50), 85367** (0.50) Researcher Position (1.00) <u>Full Time:</u> #85369 Graduate Assistants (2.00) #85777 (0.50) 88347 (0.50) 88537 (0.50) 88664 (0.50) (29.00)	Chairman (Appointed from Instructional Positions) Secretary II, SR-14, #12853 (1.00) Clk-Typist II, SR-08, #28692 (1.00) Clk-Typist II, SR-08, #46180 (1.00) UH Electronics Tech II, P09, (1.00) #81078 UH Electronics Tech II, P09, (1.00) #81876 UH Electronics Engineer I, (1.00) P12, #81893 UH Electronics Engineer (1.00) P, #81223*** Instructional Positions (26.00) <u>Full Time:</u> #82346, 82724, 82787, 82978, 83014, 83032, 83226, 83264, 83268, 83401, 83412, 83723, 83895, 84033, 84113, 84252, 84389, 84436, 84498, 84506, 84677, 85351, 85352, 85353, 85354, 85361 Graduate Assistants (4.00) #85291 (0.50), 85605 (0.50), 88025 (0.50), 88069 (0.50), 88128 (0.50), 88195 (0.50), 88522 (0.50), 88115 (0.50) (37.00)	Chairman (Appointed from Instructional Positions) Secretary II, SR-14, #13511 (1.00) Clk-Steno II, SR-09, #22335 (1.00) Electro Mechanical Lab Tech, (1.00) WB-14, #09067 UH Sci Instrument Tech II, (1.00) P09, #81174 Instructional Positions (15.00) <u>Full-time:</u> #82267, 82320, 82353, 82374, 82623, 82658, 82957, 83009, 83205, 83251, 83340, 83696, 84262, 85356, 85357 Graduate Assistants (1.50) #88158 (0.50) 88528 (0.50) 88609 (0.50) (20.50)	UH Electronics Engineer I, (1.00) P12, #80003 UH Educational Specialist (1.00) III, P09, #81998 (2.00)

Revised July 1, 1998

CHART UPDATED
DATE JUL - 1 1998

*General Fund Position Count
**Replaces position no. 82004
***Reallocated position (#81223) from President's
pool to be established and classified

Approved:

Title:

Date:

Paul C. Yuen
Dean of Engineering
July 1, 1998