

STATE OF HAWAII  
UNIVERSITY OF HAWAII  
UNIVERSITY OF HAWAII AT MANOA  
SCHOOL OF OCEAN AND EARTH  
SCIENCE AND TECHNOLOGY  
ORGANIZATION CHART XXXI

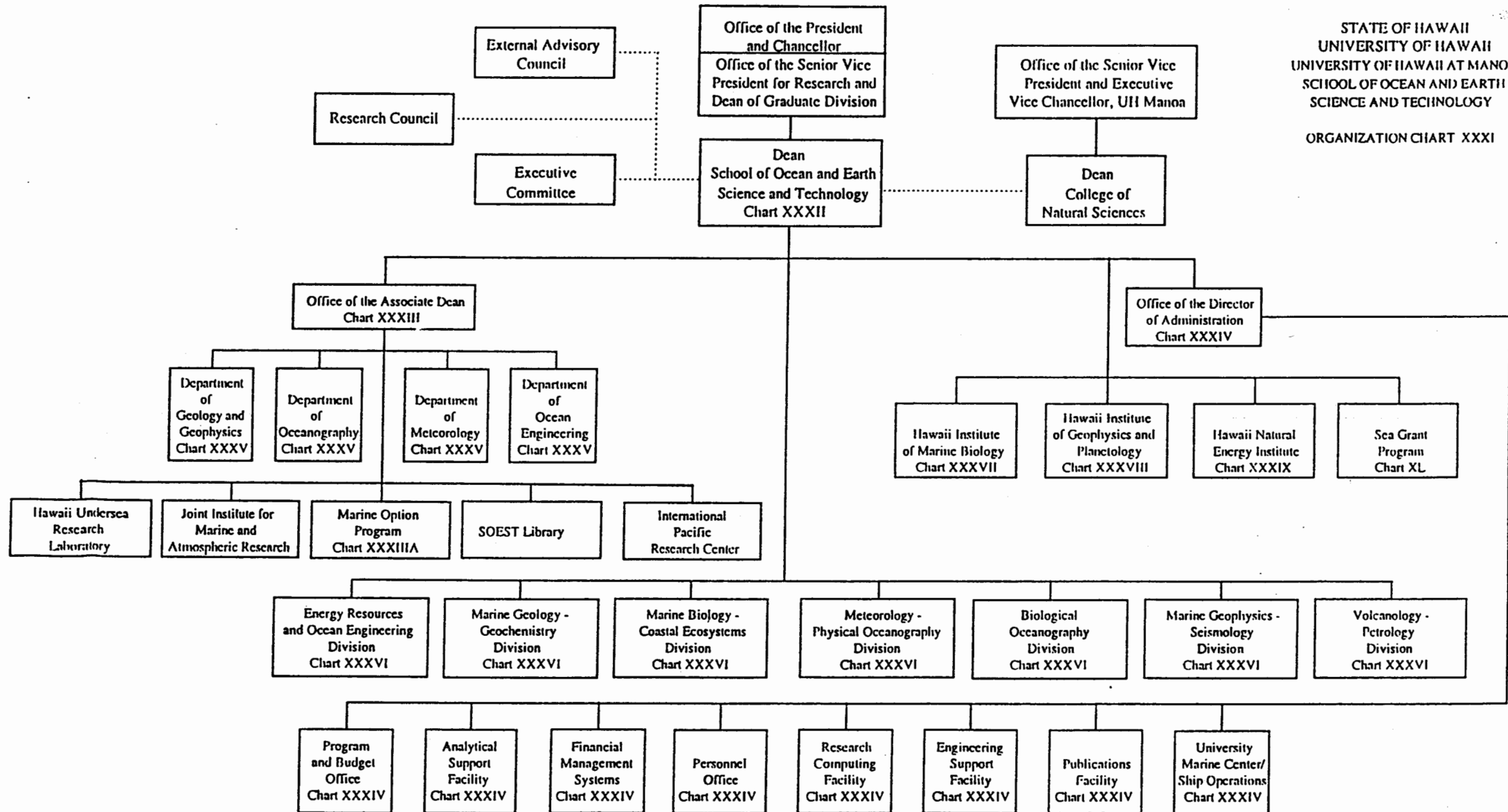


CHART UPDATED  
DATE JUL 01 1998

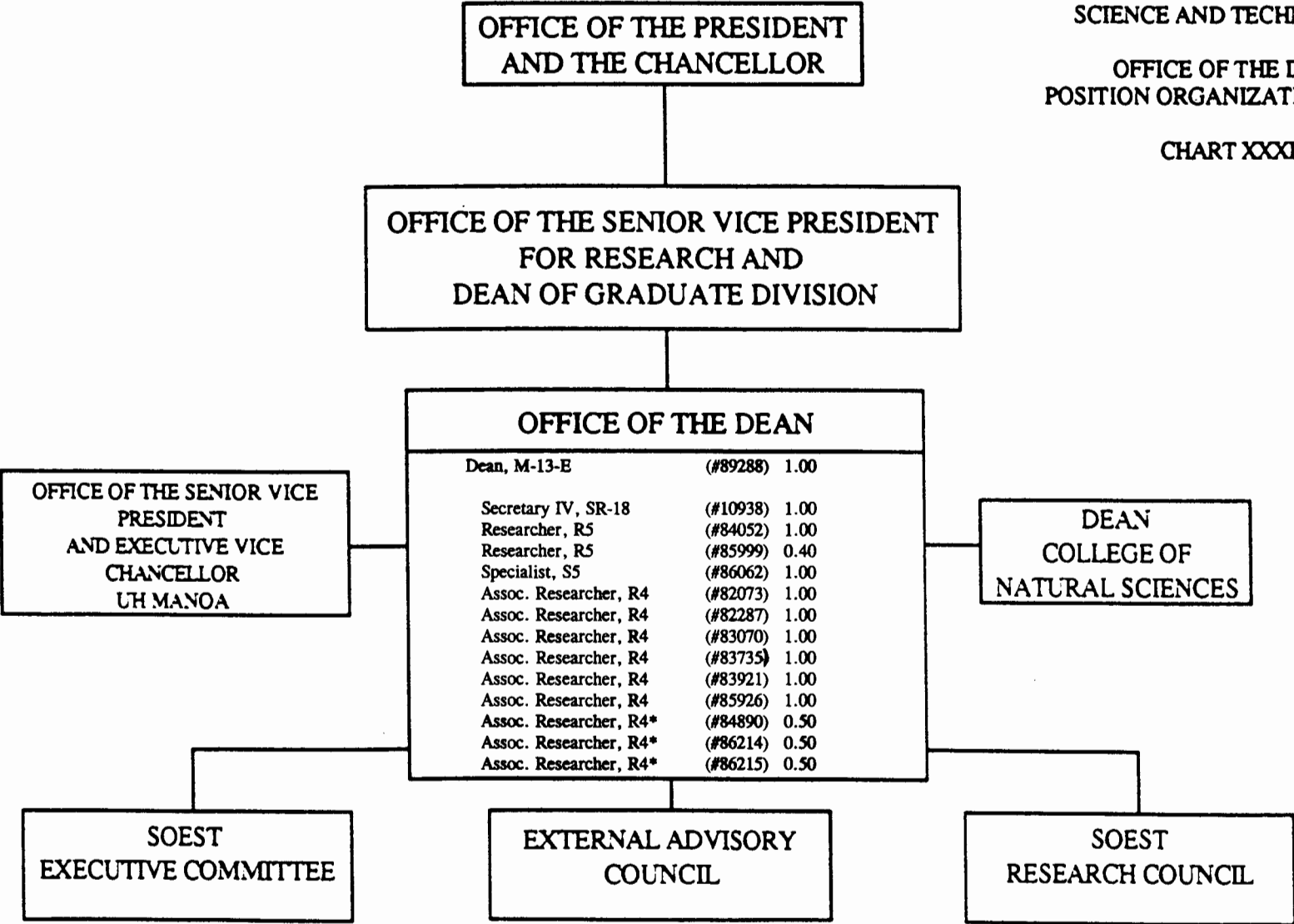
APPROVED:

C. Barry Raleigh, Dean 07/01/98

STATE OF HAWAII  
UNIVERSITY OF HAWAII  
UNIVERSITY OF HAWAII AT MANOA  
SCHOOL OF OCEAN AND EARTH  
SCIENCE AND TECHNOLOGY

OFFICE OF THE DEAN  
POSITION ORGANIZATION CHART

CHART XXXII



\* To be established

STATE OF HAWAII  
UNIVERSITY OF HAWAII  
UNIVERSITY OF HAWAII AT MANOA  
SCHOOL OF OCEAN AND EARTH  
SCIENCE AND TECHNOLOGY

OFFICE OF THE ASSOCIATE DEAN  
FOR ACADEMIC AFFAIRS  
POSITION ORGANIZATION CHART

CHART XXXIII

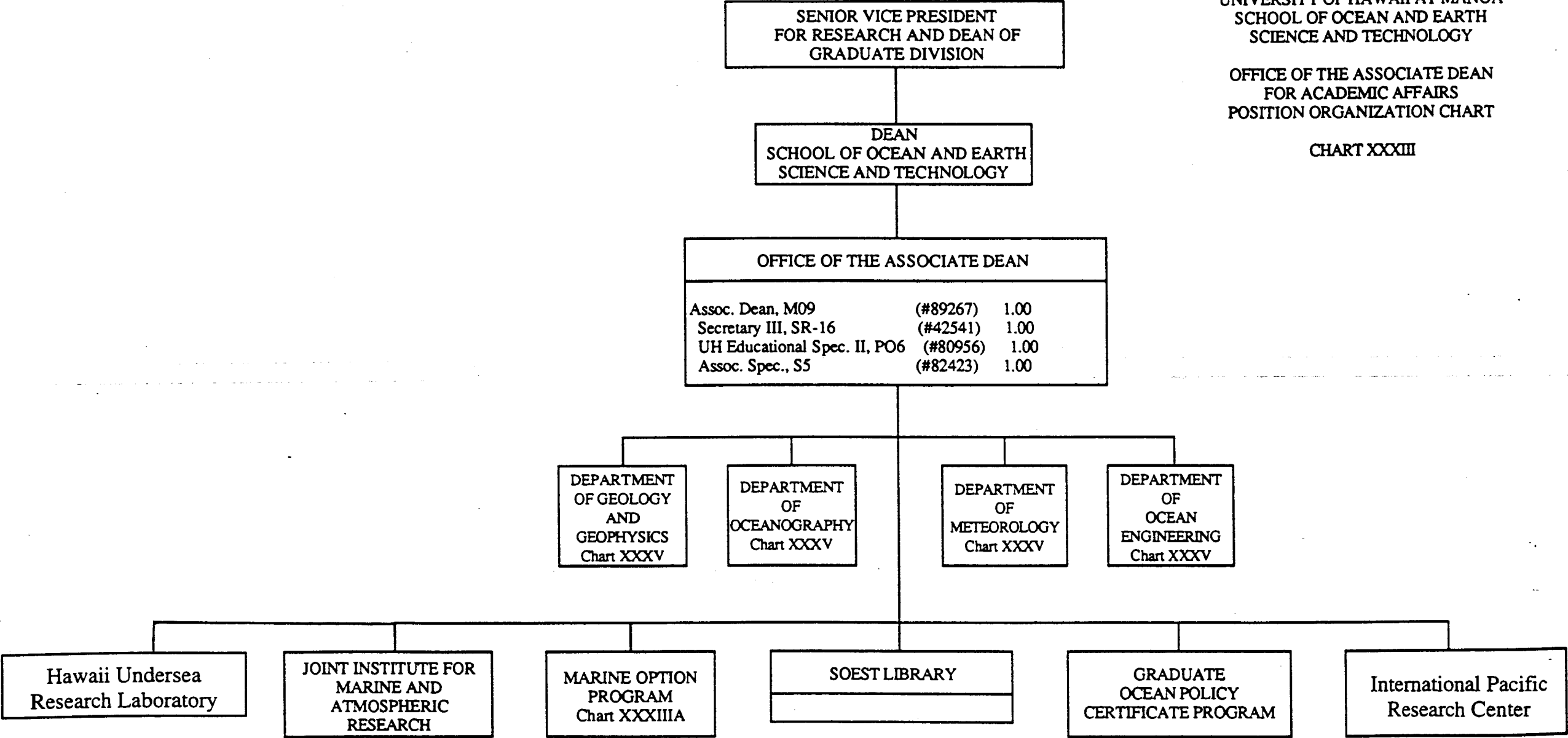
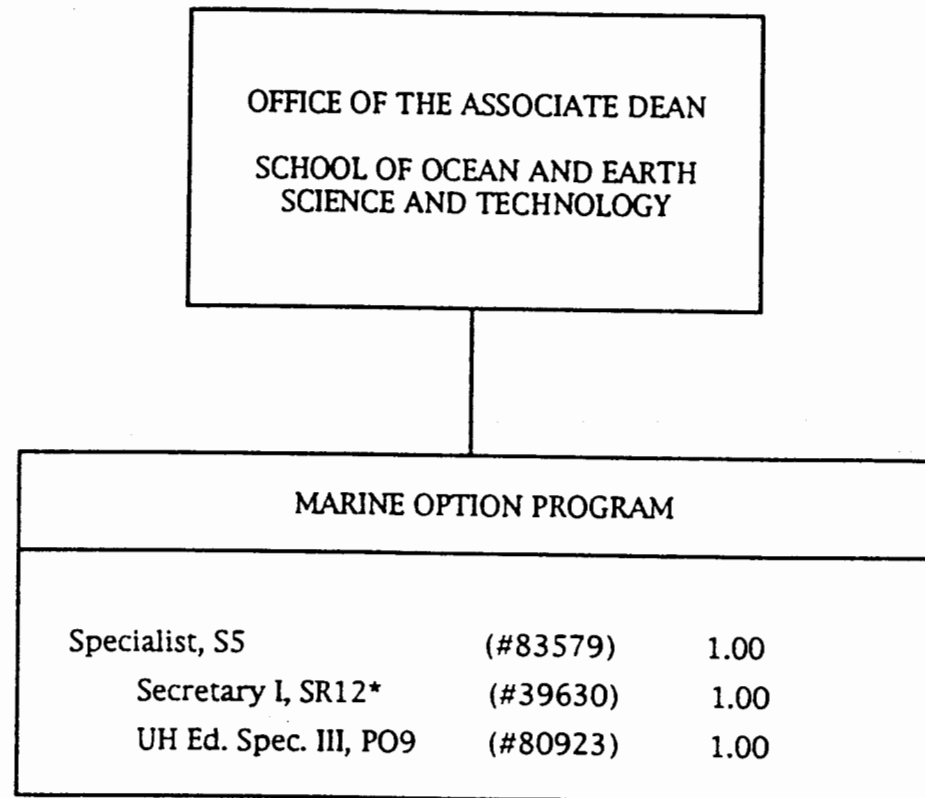


CHART UPDATED  
DATE JUL 01 1998

STATE OF HAWAII  
UNIVERSITY OF HAWAII  
UNIVERSITY OF HAWAII AT MANOA  
SCHOOL OF OCEAN AND EARTH  
SCIENCE AND TECHNOLOGY

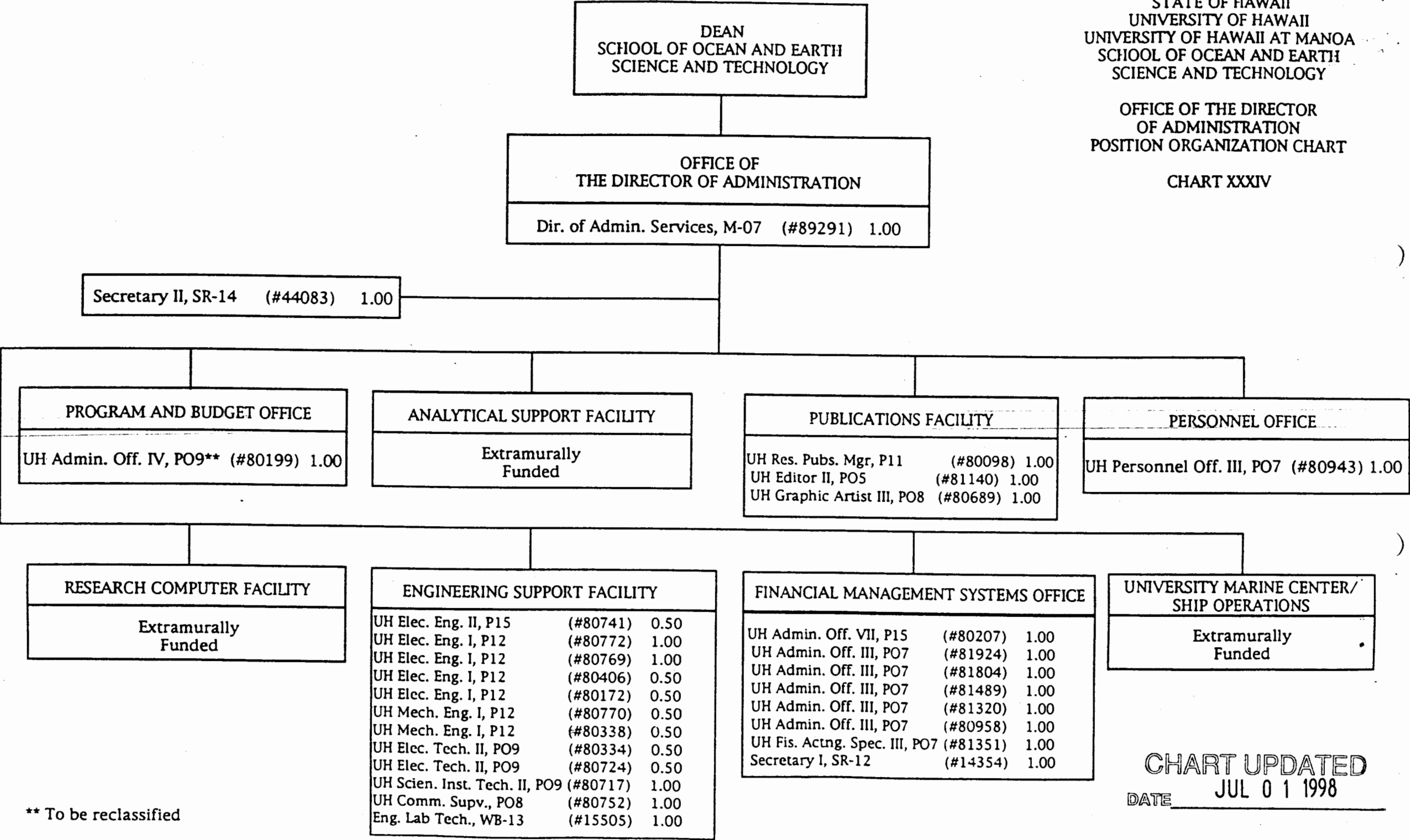
MARINE OPTION PROGRAM  
POSITION ORGANIZATION CHART

CHART XXXIIIA

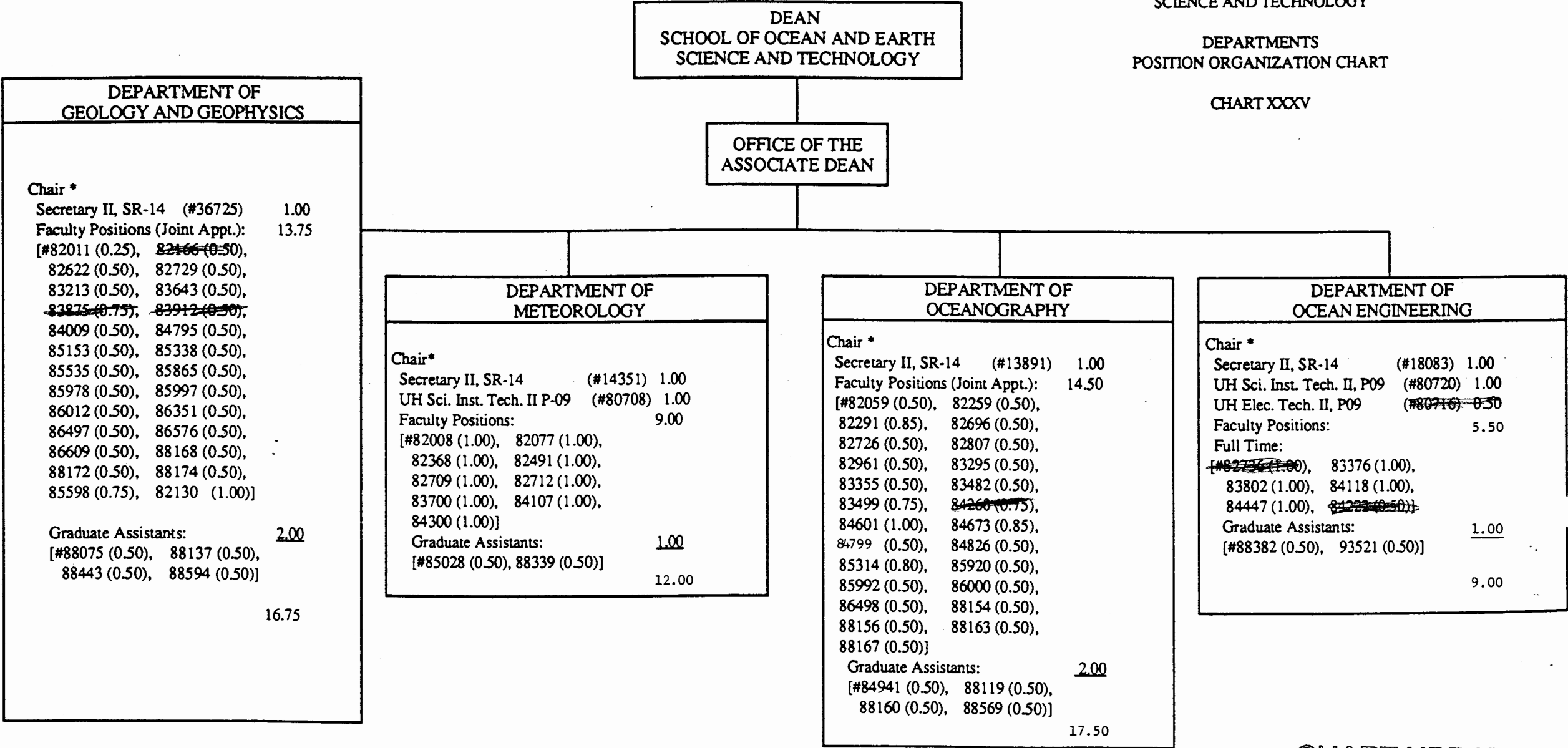


\* To be reclassified

CHART UPDATED  
JUL 01 1998  
DATE \_\_\_\_\_



\*\* To be reclassified



\* Appointed from faculty positions

DEAN  
SCHOOL OF OCEAN AND EARTH  
SCIENCE AND TECHNOLOGY

METEOROLOGY -  
PHYSICAL OCEANOGRAPHY

Chair\*

Professor, I5	(#83482)	0.50
Professor, I5-R	(#82696)	0.50
Spec. in Geophys., S5	(#84451)	1.00
Res. & Prof. In Ocean., R5	(#85442)	1.00
Assoc. Professor, I4	(#82807)	0.50
Assoc. Professor, I4-R	(#84260)	0.25
Assoc. Professor, I4-R	(#82726)	0.50
Assoc. Professor, I4-R	(#85920)	0.50
Assoc. Professor, I4-R	(#88156)	0.50
Asst. Professor, I3-R	(#84826)	0.50
Asst. Professor, I3-R	(#83031)	0.50

VOLCANOLOGY - PETROLOGY

Chair \*

Secretary II, SR-14	(#14352)	1.00
MacDonald Professor Of Volcanology, I5-R	(#85535)	0.50
Professor, I5-R	(#85153)	0.50
Professor, I5-R	(#88174)	0.50
Assoc. Professor, I4	(#83875)	0.25
Assoc. Professor, I4-R	(#82729)	0.50
Assoc. Professor, I4-R	(#84795)	0.50
Professor, I5-R	(#85997)	0.50
Assoc. Professor, I4-R	(#86012)	0.50
Asst. Professor, I3-R	(#85978)	0.50

MARINE GEOPHYSICS -  
SEISMOLOGY

Chair\*

Secretary II, SR-14	(#14350)	1.00
Professor, I5-R	(#83643)	0.50
Professor, I5-R	(#88172)	0.50
Professor, I5-R	(#82011)	0.75
Professor, I5-R	(#88168)	0.50
Geophysicist, R5	(#86351)	0.50
Geophysicist, R5	(#86497)	0.50
Geophysicist, R5	(#82166)	0.50
Assoc. Professor, I4-R	(#85338)	0.50
Assoc. Professor, I4-R	(#86576)	0.50
Assoc. Professor, I4-R	(#86609)	0.50
Assoc. Professor, I4-R	(#85865)	0.50
UH Research Assoc. IV, P07	(#80562)	0.50
UH Ed. Spec. II, P06	(#80803)	0.50

MARINE GEOLOGY -  
GEOCHEMISTRY

Chair\*

Secretary II, SR-14	(#36897)	1.00
Professor, I5-R	(#82622)	0.50
Professor, I5-R	(#86000)	0.50
Professor, I5-R	(#82259)	0.50
Professor, I5-R	(#83295)	0.50
Professor, I5-R	(#86498)	0.50
Professor, I5-R	(#83499)	0.25
Professor, I5	(#82059)	0.50
Researcher, R5	(#84799)	0.50
Researcher, R5	(#84009)	0.50
Researcher, R5	(#85339)	1.00
Specialist, S5	(#88178)	0.75
Assoc. Researcher, R4	(#85992)	0.50
Assoc. Specialist, S4	(#88488)	0.75
Jr. Specialist, S2	(#88194)	0.75
UH Electronics Eng. I, P12	(#81995)	0.75
UH Research Assoc. IV, P07	(#80804)	1.00

MARINE BIOLOGY AND  
COASTAL ECOSYSTEMS

Chair\*

Affiliate members  
from Hawaii Institute  
of Marine Biology

BIOLOGICAL  
OCEANOGRAPHY

Chair \*

Secretary II, SR-14	(#36896)	1.00
Professor, I5	(#84673)	0.15
Professor, I5	(#83355)	0.50
Professor, I5	(#85314)	0.20
Professor, I5-R	(#88167)	0.50
Researcher, R5	(#82800)	1.00
Assoc. Professor, I4-R	(#88163)	0.50
Assoc. Professor, I4-R	(#82961)	0.50
Asst. Professor, I3-R	(#82291)	0.15

ENERGY RESOURCES AND  
OCEAN ENGINEERING

Chair \*

Affiliate members  
from Hawaii Natural  
Energy Institute

STATE OF HAWAII  
UNIVERSITY OF HAWAII  
UNIVERSITY OF HAWAII AT MANOA  
SCHOOL OF OCEAN AND EARTH  
SCIENCE AND TECHNOLOGY

HAWAII INSTITUTE OF MARINE BIOLOGY

CHART XXXVII

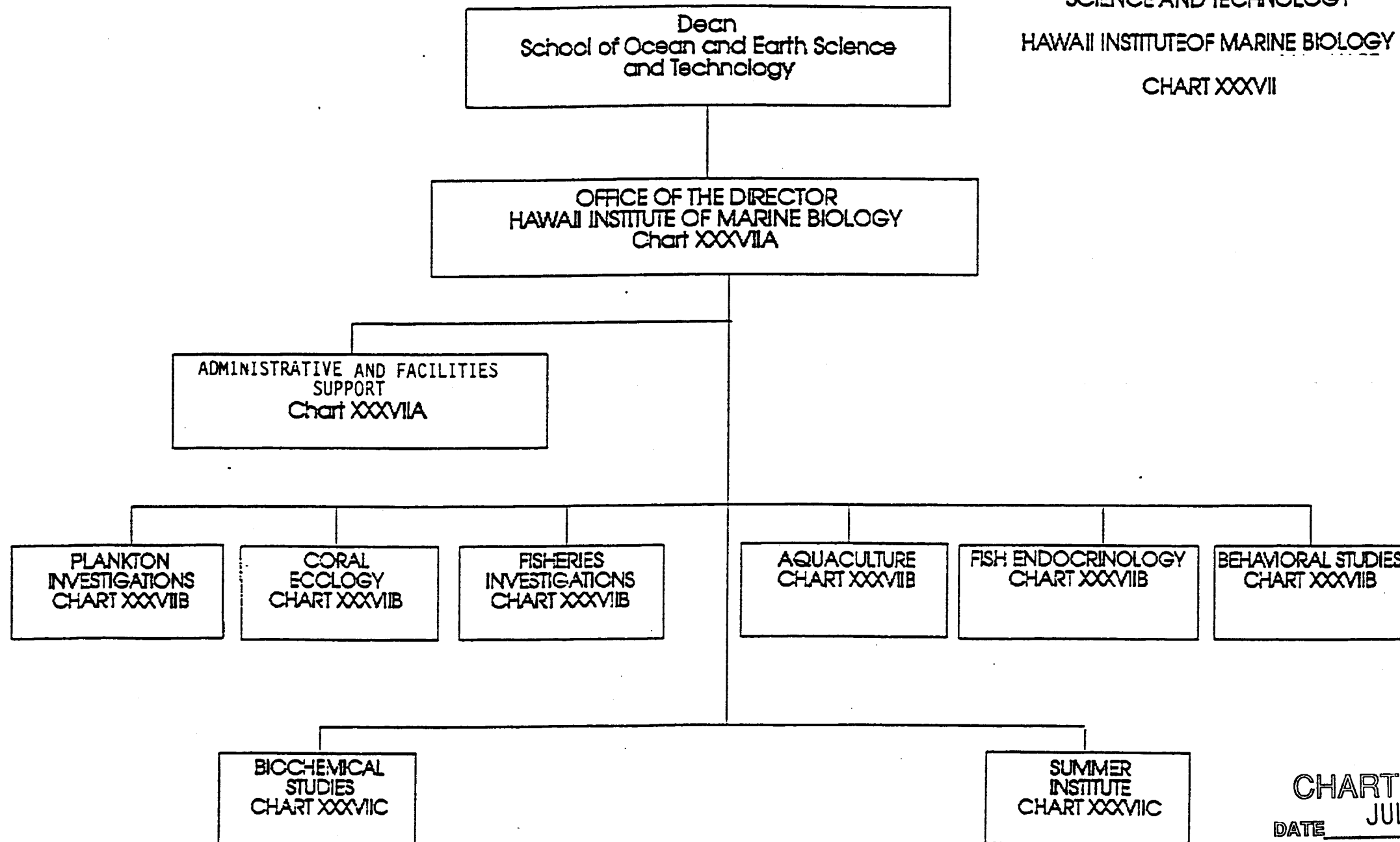
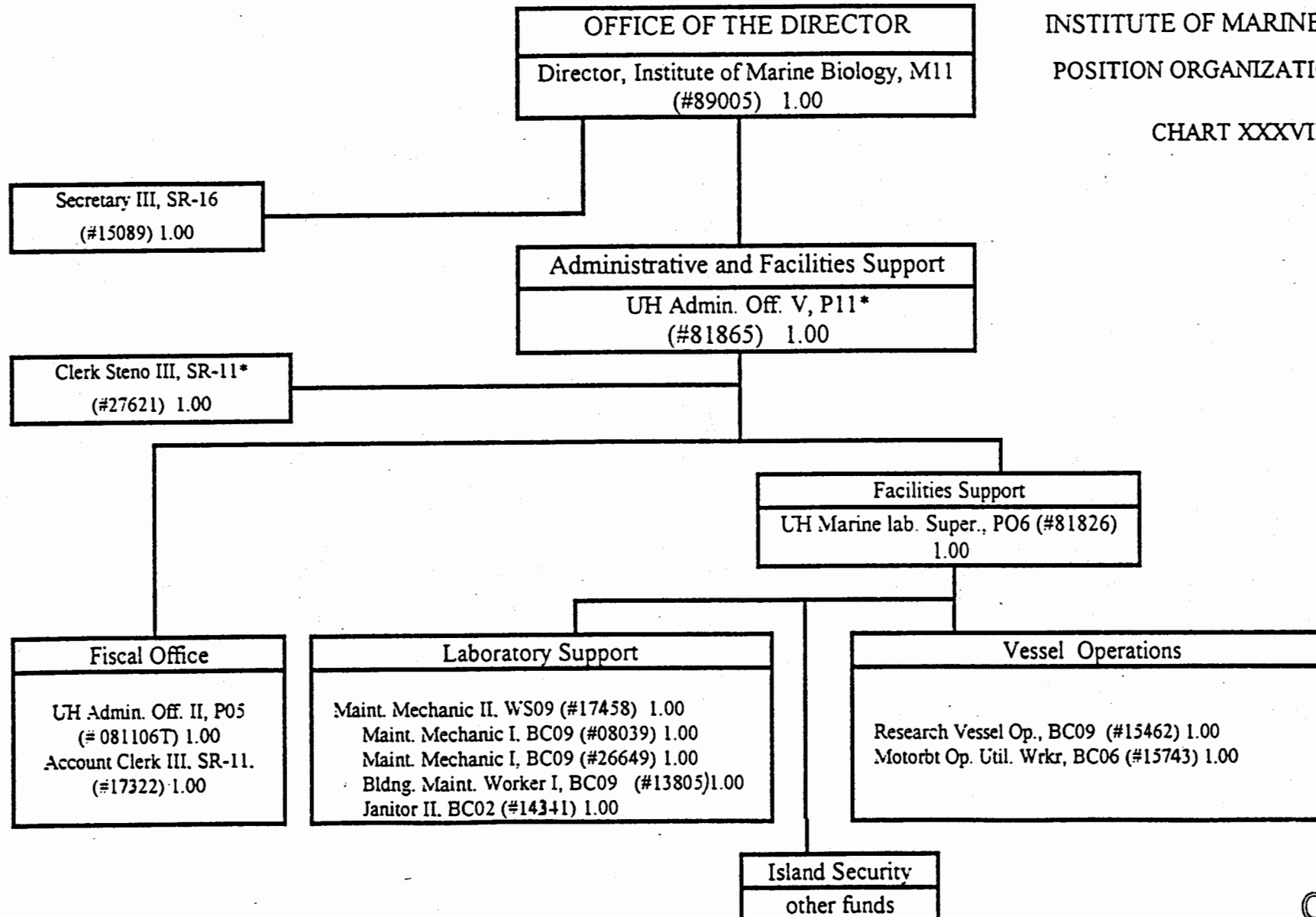


CHART UPDATED  
JUL 01 1998  
DATE \_\_\_\_\_



STATE OF HAWAII  
 UNIVERSITY OF HAWAII  
 UNIVERSITY OF HAWAII AT MANOA  
 SCHOOL OF OCEAN AND EARTH  
 SCIENCE AND TECHNOLOGY  
 INSTITUTE OF MARINE BIOLOGY  
 POSITION ORGANIZATION CHART

CHART XXXVIIA



\* To be reclassified

CHART UPDATED  
 DATE JUL 01 1998

STATE OF HAWAII  
 UNIVERSITY OF HAWAII  
 UNIVERSITY OF HAWAII AT MANOA  
 SCHOOL OF OCEAN AND EARTH  
 SCIENCE AND TECHNOLOGY

HAWAII INSTITUTE OF MARINE BIOLOGY  
 POSITION ORGANIZATION CHART

CHART XXXVIII

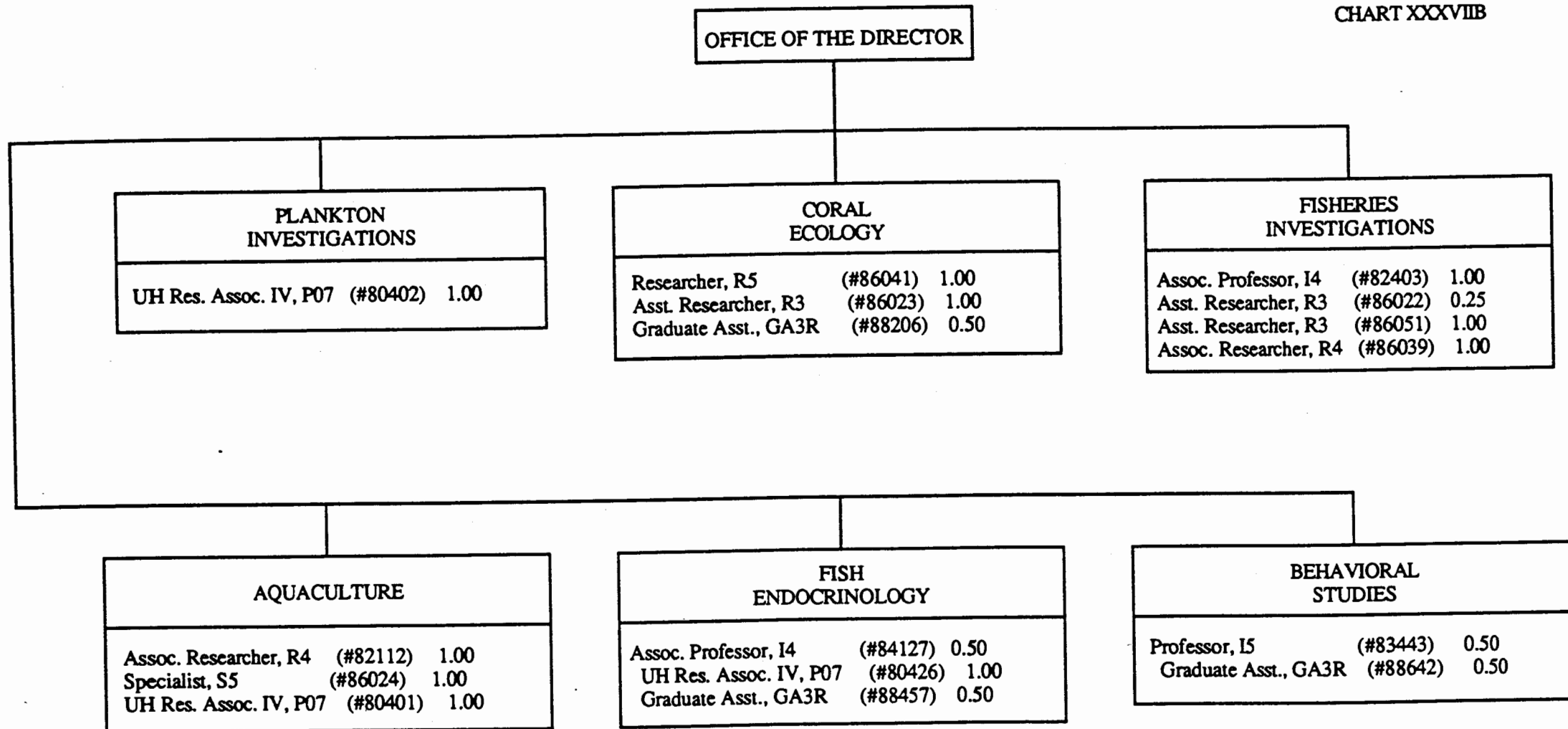


CHART UPDATED  
 JUL 6 1998  
 DATE \_\_\_\_\_

STATE OF HAWAII  
UNIVERSITY OF HAWAII  
UNIVERSITY OF HAWAII AT MANOA  
SCHOOL OF OCEAN AND EARTH  
SCIENCE AND TECHNOLOGY

HAWAII INSTITUTE OF MARINE BIOLOGY  
POSITION ORGANIZATION  
CHART

CHART XXXVIIC

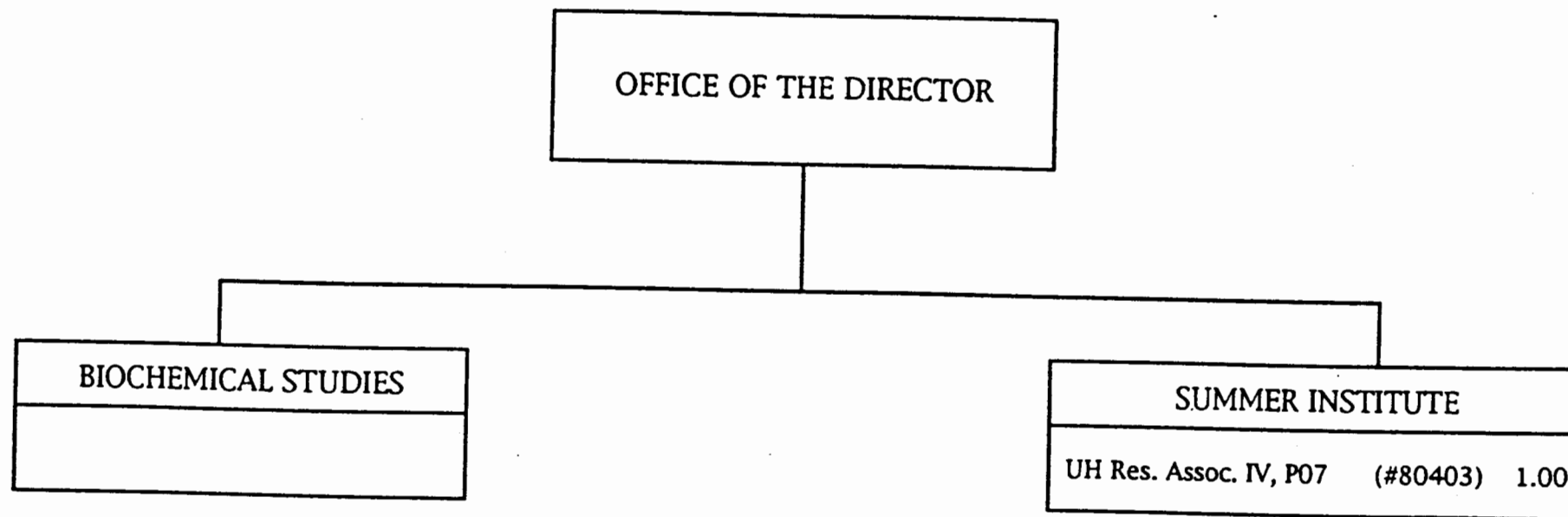
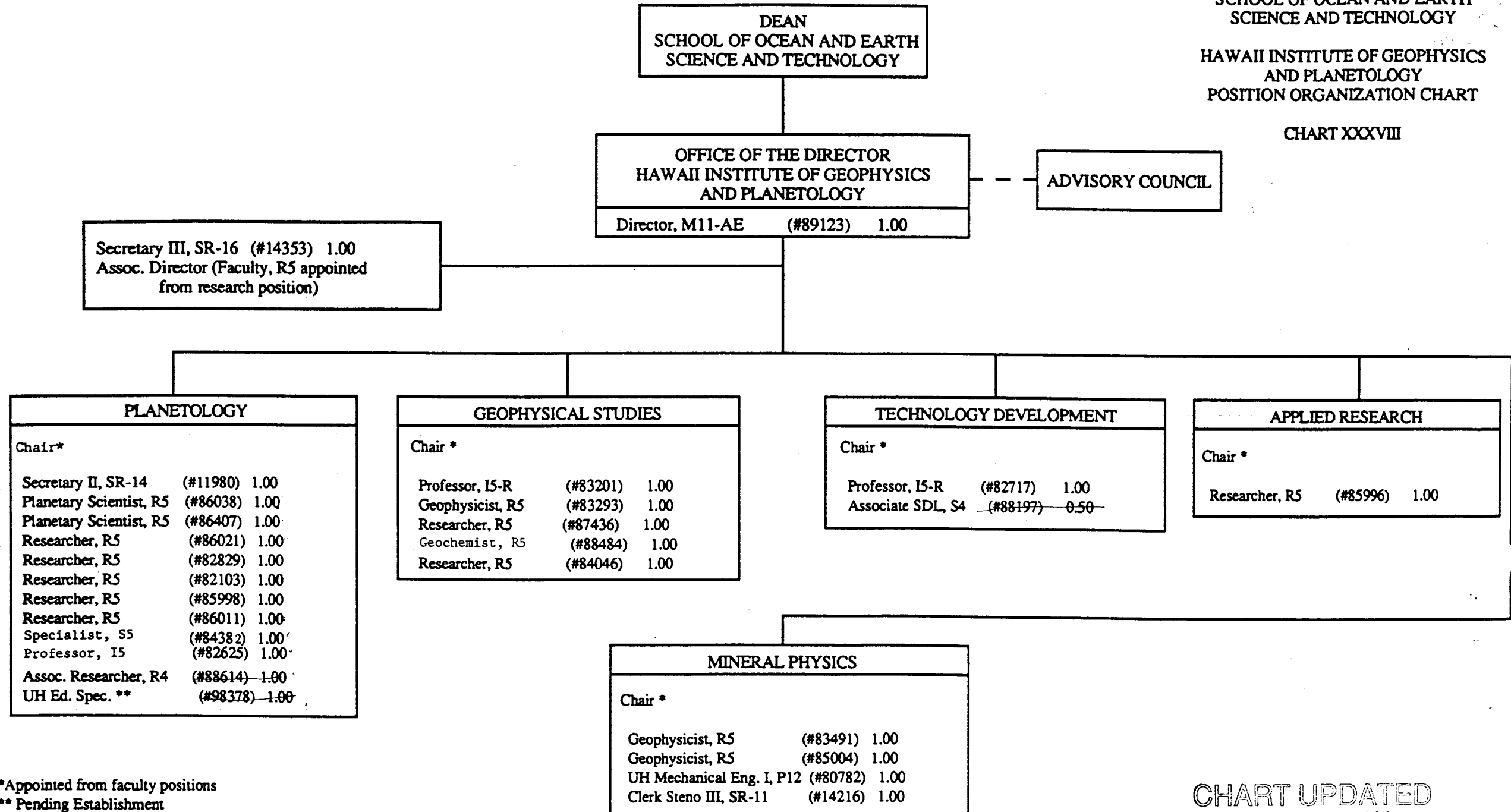


CHART UPDATED  
DATE JUL 01 1998



\*Appointed from faculty positions

\*\* Pending Establishment

CHART UPDATED  
DATE JUL 01 1998

STATE OF HAWAII  
UNIVERSITY OF HAWAII  
UNIVERSITY OF HAWAII AT MANOA  
SCHOOL OF OCEAN AND EARTH  
SCIENCE AND TECHNOLOGY

HAWAII NATURAL ENERGY INSTITUTE  
POSITION ORGANIZATION CHART

CHART XXXIX

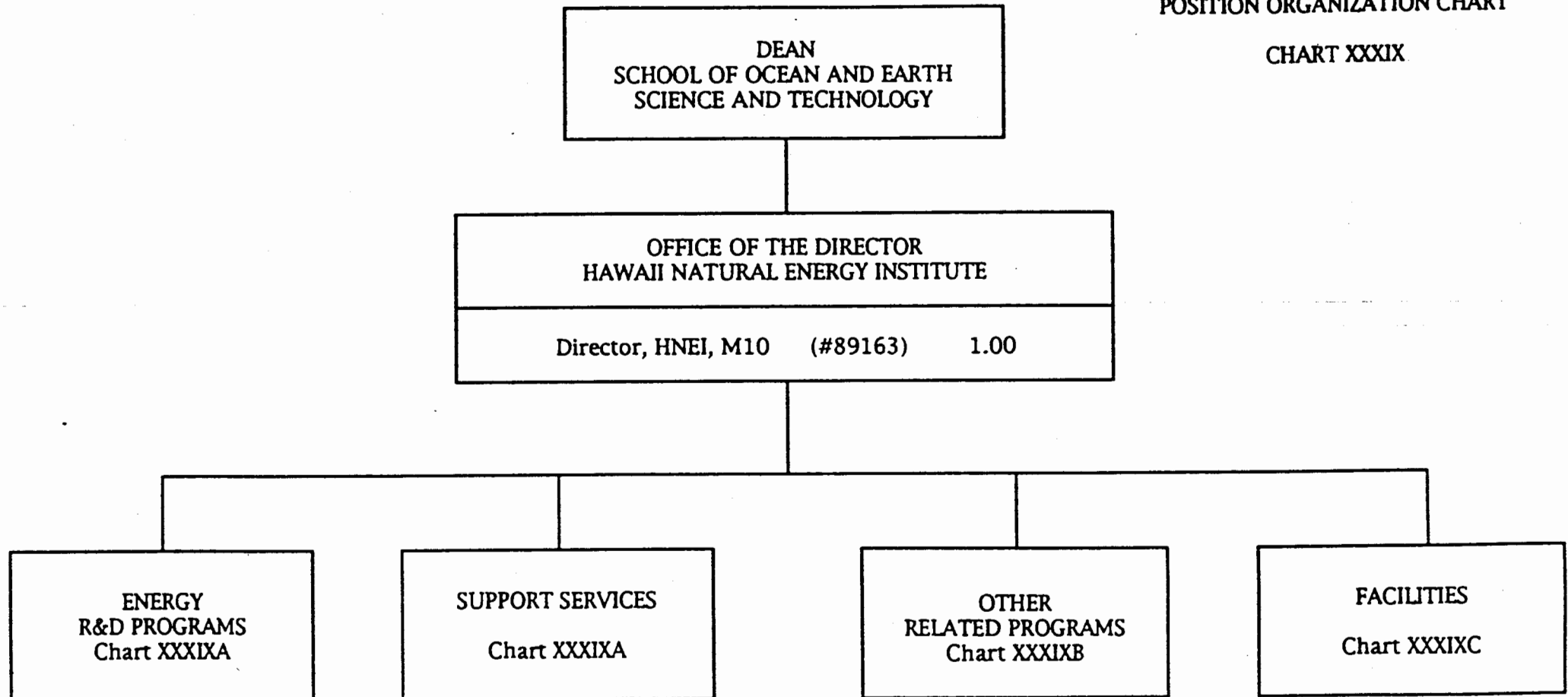


CHART UPDATED  
DATE JUL 01 1998

APPROVED:

*C. Barry Raleigh*  
C. Barry Raleigh, Dean

07/01/98

STATE OF HAWAII  
UNIVERSITY OF HAWAII  
UNIVERSITY OF HAWAII AT MANOA  
SCHOOL OF OCEAN AND EARTH  
SCIENCE AND TECHNOLOGY

HAWAII NATURAL ENERGY INSTITUTE  
POSITION ORGANIZATION CHART

CHART XXXIXA

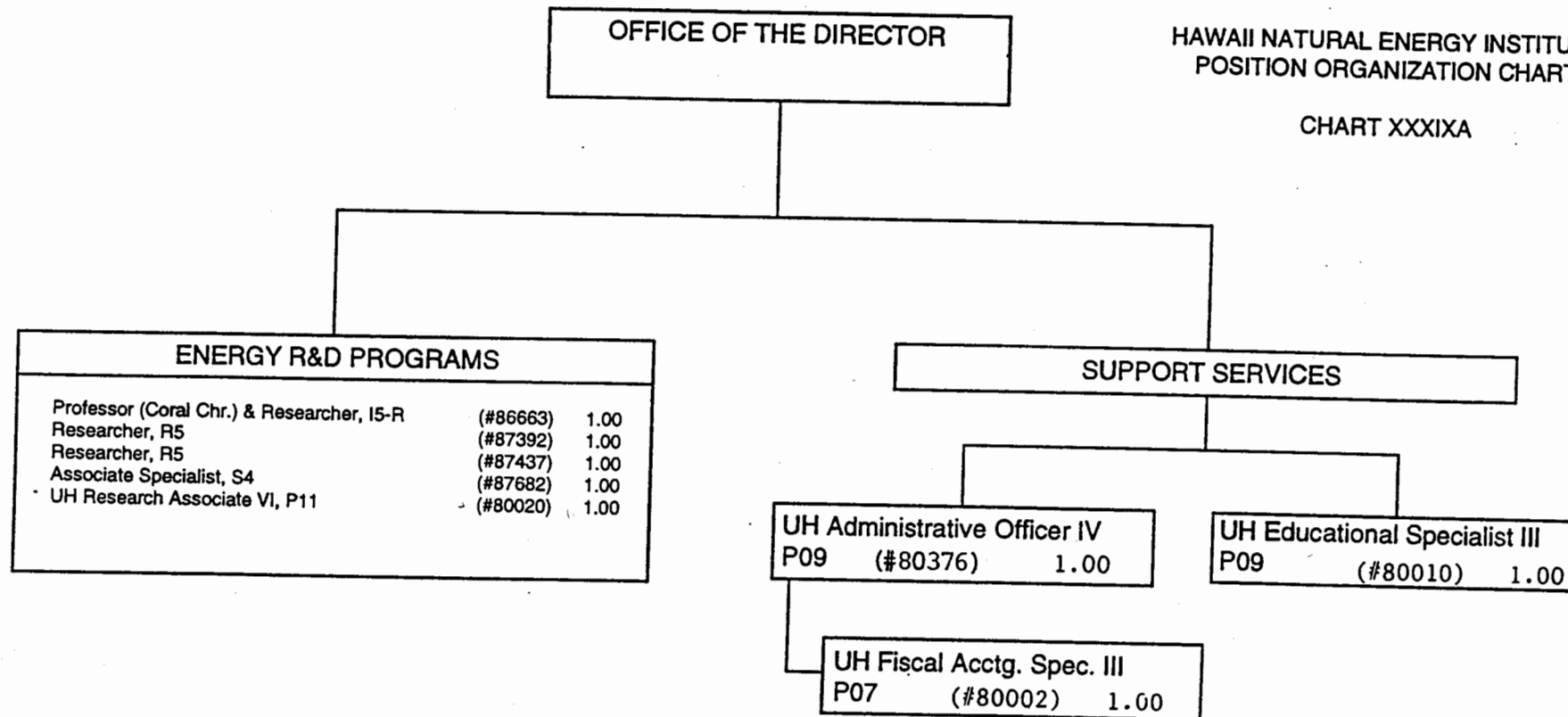


CHART UPDATED  
DATE JUL 01 1998

STATE OF HAWAII  
UNIVERSITY OF HAWAII  
UNIVERSITY OF HAWAII AT MANOA  
SCHOOL OF OCEAN AND EARTH  
SCIENCE AND TECHNOLOGY

HAWAII NATURAL ENERGY INSTITUTE  
POSITION ORGANIZATION CHART

CHART XXXIXB

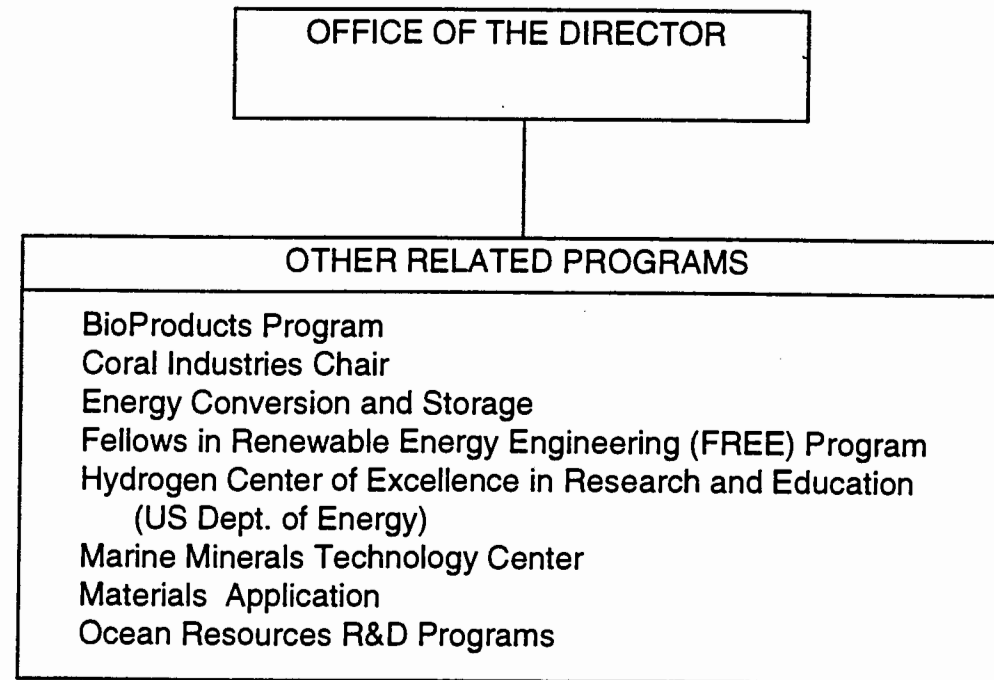


CHART UPDATED  
DATE JUL 01 1998

STATE OF HAWAII  
UNIVERSITY OF HAWAII  
UNIVERSITY OF HAWAII AT MANOA  
SCHOOL OF OCEAN AND EARTH  
SCIENCE AND TECHNOLOGY

HAWAII NATURAL ENERGY INSTITUTE  
POSITION ORGANIZATION CHART

CHART XXXIXC

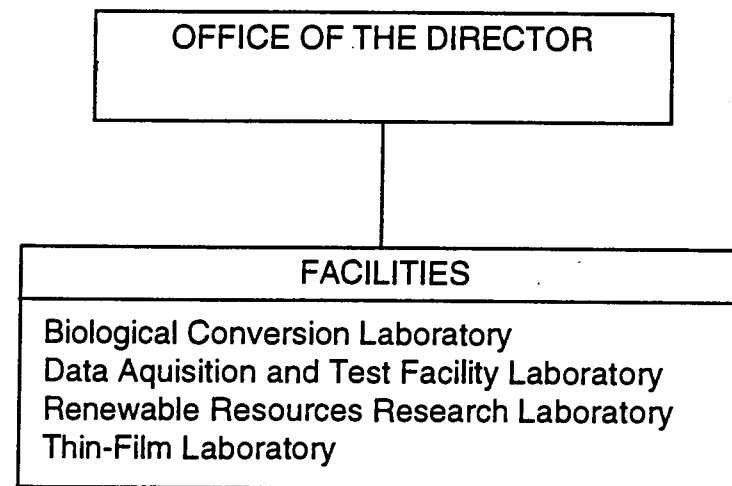


CHART UPDATED  
DATE JUL 01 1998



STATE OF HAWAII  
UNIVERSITY OF HAWAII  
UNIVERSITY OF HAWAII AT MANOA  
SCHOOL OF OCEAN AND EARTH  
SCIENCE AND TECHNOLOGY

SEA GRANT COLLEGE PROGRAM  
ORGANIZATION CHART

CHART XL

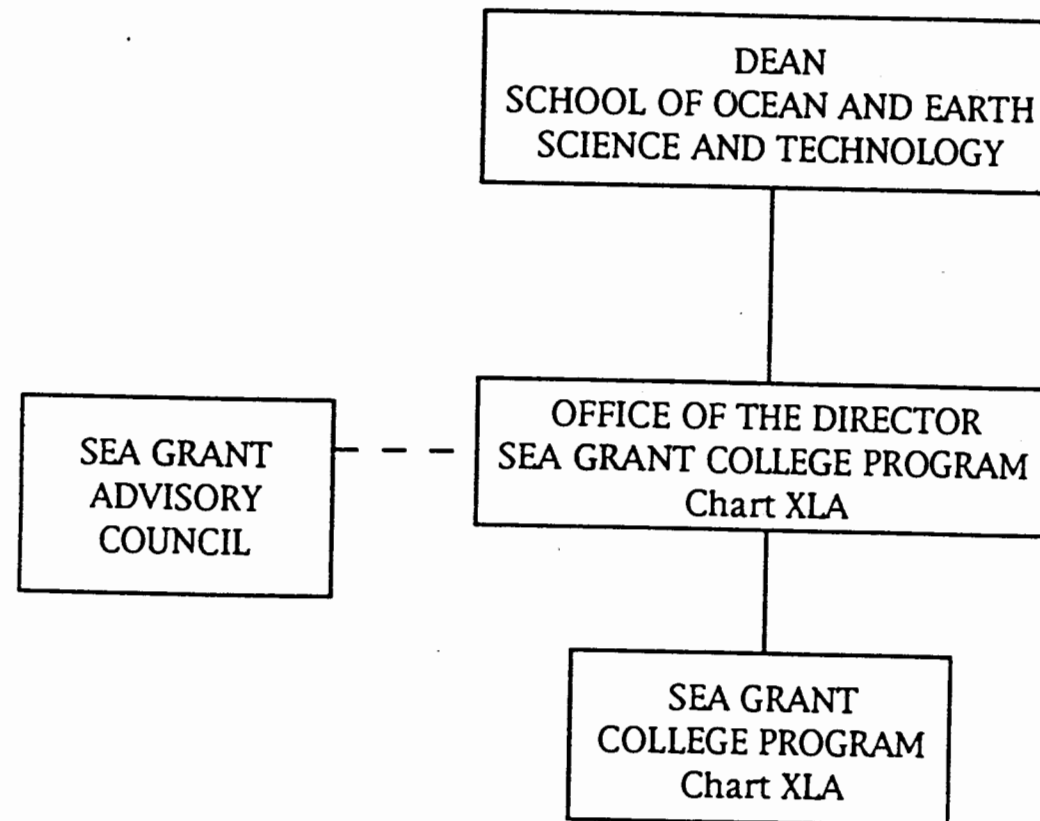


CHART UPDATED  
DATE JUL 01 1998

STATE OF HAWAII  
UNIVERSITY OF HAWAII  
UNIVERSITY OF HAWAII AT MANOA  
SCHOOL OF OCEAN AND EARTH  
SCIENCE AND TECHNOLOGY

SEA GRANT COLLEGE PROGRAM  
POSITION ORGANIZATION CHART

CHART XLA

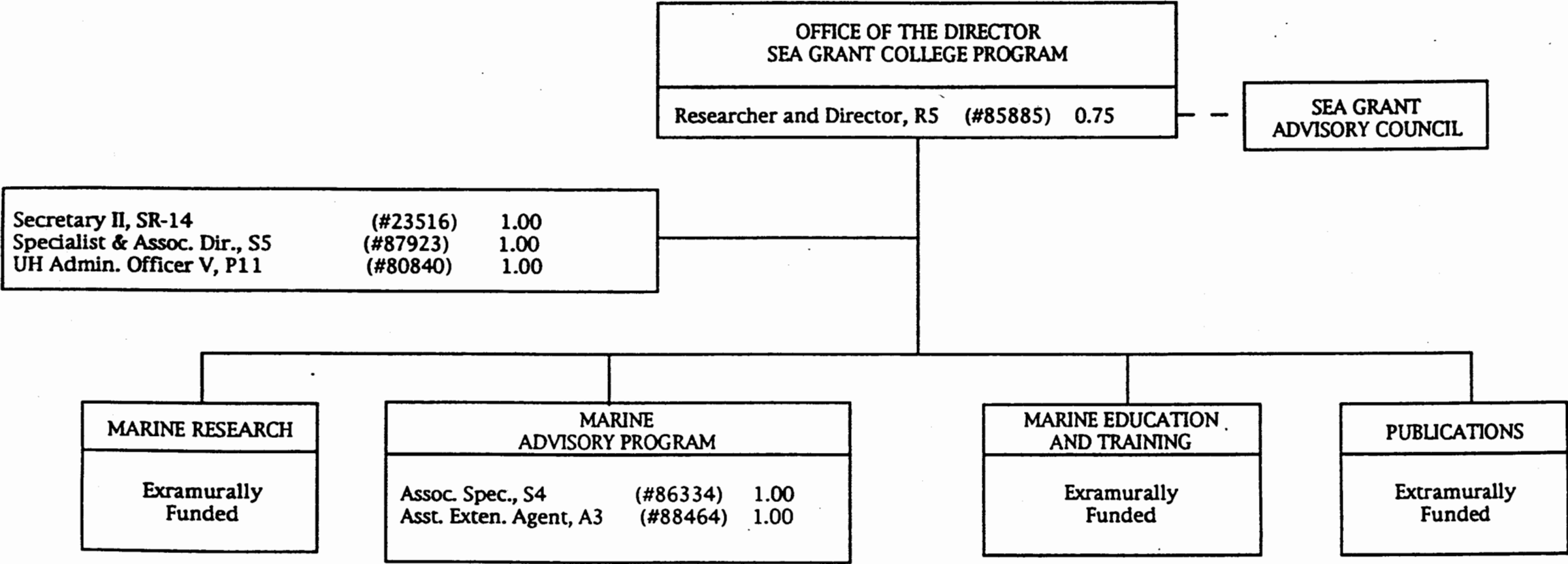


CHART UPDATED  
DATE JUL 01 1998