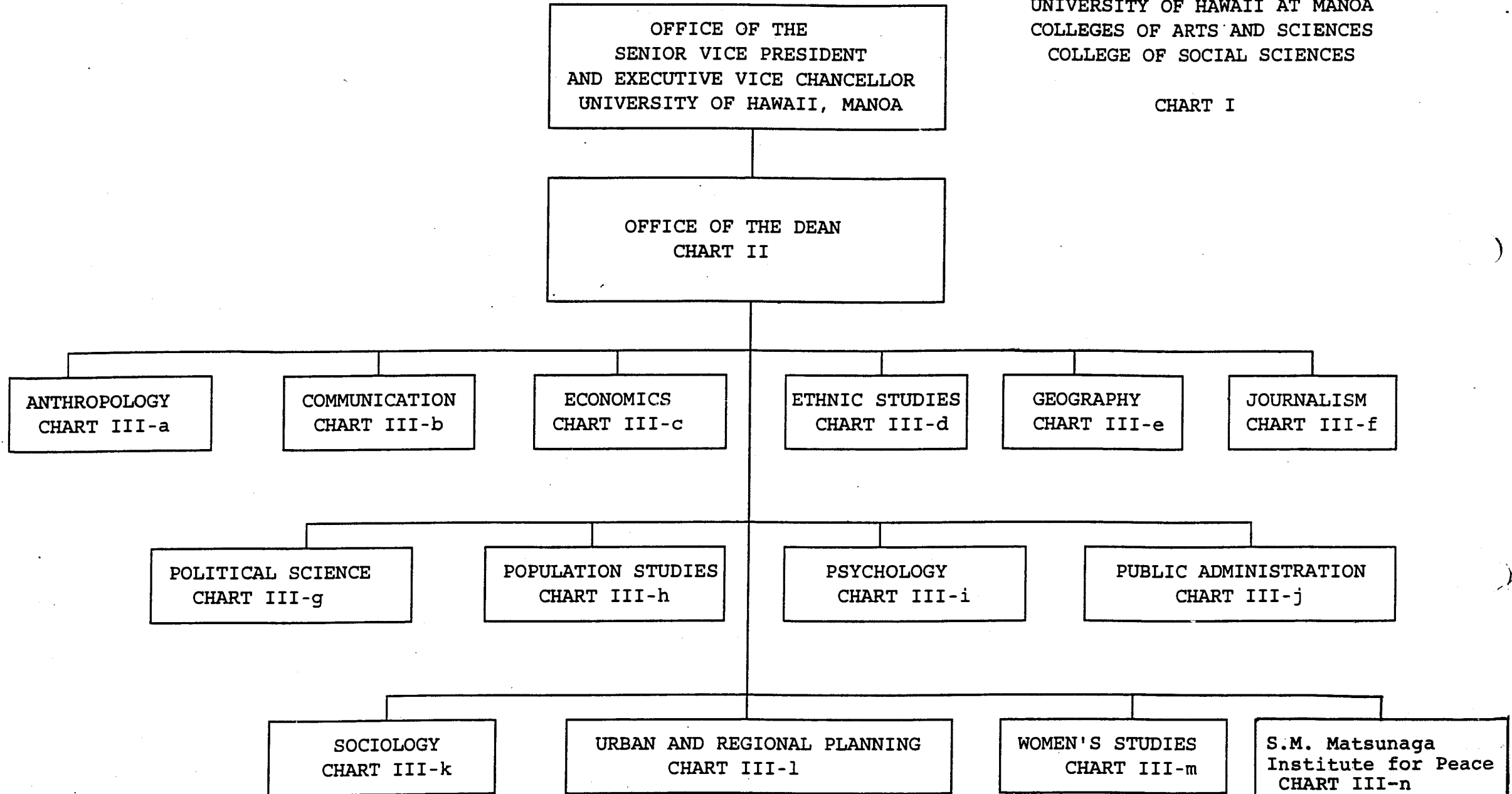


STATE OF HAWAII  
UNIVERSITY OF HAWAII  
UNIVERSITY OF HAWAII AT MANOA  
COLLEGES OF ARTS AND SCIENCES  
COLLEGE OF SOCIAL SCIENCES

CHART I

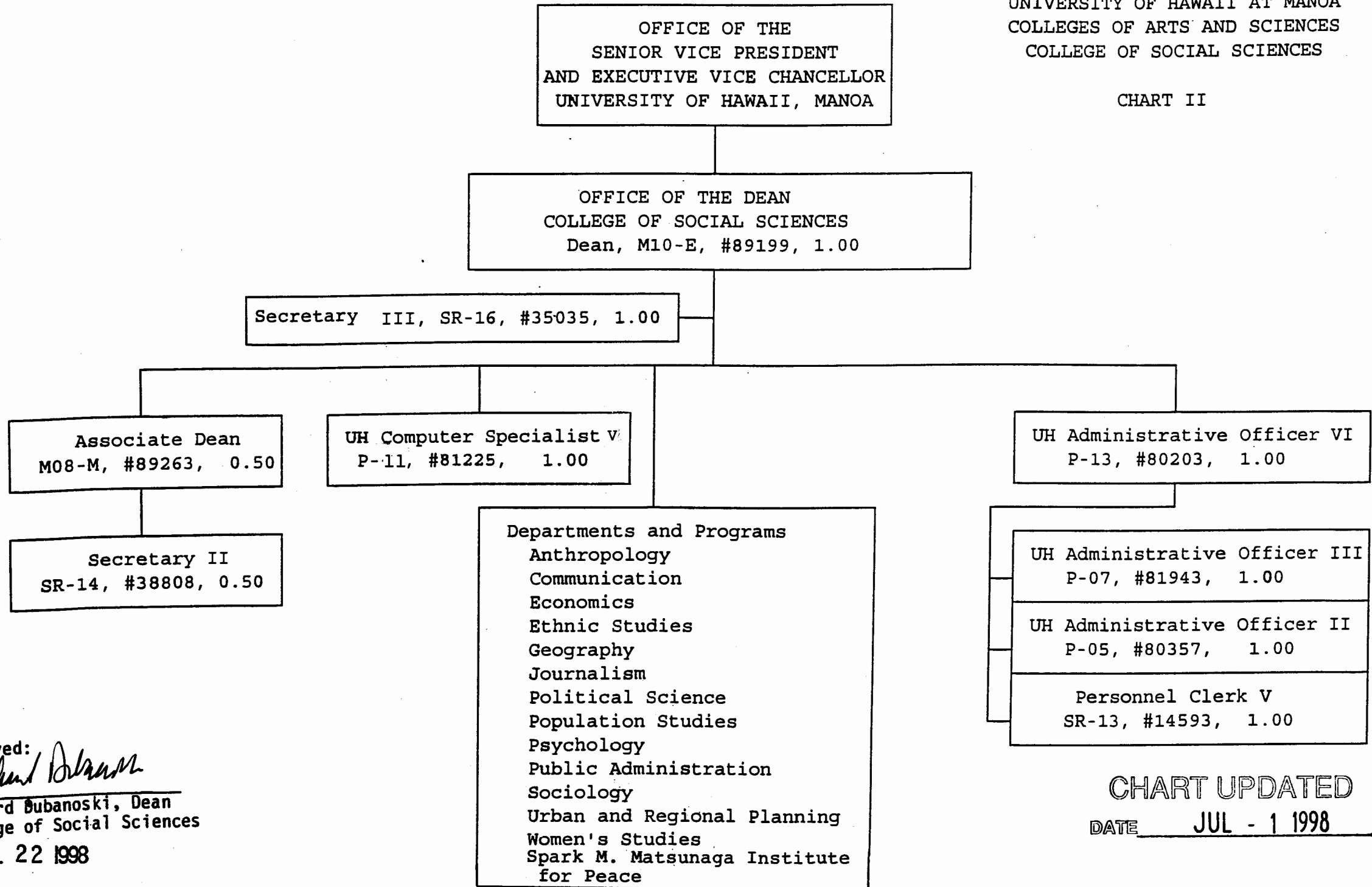


Approved:  
*Richard Dubanoski*  
Richard Dubanoski, Dean  
College of Social Sciences  
JUL 22 1998

CHART UPDATED  
DATE JUL - 1 1998

STATE OF HAWAII  
UNIVERSITY OF HAWAII  
UNIVERSITY OF HAWAII AT MANOA  
COLLEGES OF ARTS AND SCIENCES  
COLLEGE OF SOCIAL SCIENCES

CHART II



Approved:

*Richard Dubanoski*  
Richard Dubanoski, Dean  
College of Social Sciences  
JUL 22 1998

CHART UPDATED  
DATE JUL - 1 1998

STATE OF HAWAII  
UNIVERSITY OF HAWAII  
UNIVERSITY OF HAWAII AT MANOA  
COLLEGES OF ARTS AND SCIENCES  
COLLEGE OF SOCIAL SCIENCES

OFFICE OF THE DEAN

CHART III-a

DEPARTMENT OF ANTHROPOLOGY

Chair (appointed from faculty positions)

Secretary II, SR-14, #13482 1.00

UH Student Services Specialist II, P-06, #80639 1.00

UH Educational Specialist II, P-06, #81746 1.00

Faculty Positions: 15.00

Full time: #82188, 82195, 82207, 82534, 82638  
82779, 82797, 83004, 83358, 83405  
83574, 83924, 84206, 84399, 85082

Graduate Assistants: 3.00

#83831, 83275, 88064, 88367  
88529, 88591

-----  
21.00

SPECIAL NOTE: Position #83720 from SSRI/CYR to CSS/Anthropology to be  
discussed and hopefully resolved by 6/30/99. Then, faculty count to be 16.00.


Approved:  
  
Richard Dubanoski, Dean  
College of Social Sciences  
JUL 22 1998

CHART UPDATED  
DATE JUL - 1 1998

STATE OF HAWAII  
UNIVERSITY OF HAWAII  
UNIVERSITY OF HAWAII AT MANOA  
COLLEGES OF ARTS AND SCIENCES  
COLLEGE OF SOCIAL SCIENCES

OFFICE OF THE DEAN

CHART III-b

DEPARTMENT OF COMMUNICATION

Chair (appointed from faculty positions)

Secretary II, SR-14, #14362 1.00

Clerk-Typist II, SR-08, #48445 1.00

Faculty Positions: 12.00

Full time: #82279, 82280, 82602, 82871, 82905  
82982, 83302, 83756, 84217, 84505  
88169, 88619

Graduate Assistants: 3.50

#85507, 88210, 88506, 88534, 88581  
88607, 88681

-----  
17.50

Approved:

*Richard Dubanoski*

Richard Dubanoski, Dean  
College of Social Sciences

JUL 22 1998

CHART UPDATED

DATE JUL - 1 1998

STATE OF HAWAII  
UNIVERSITY OF HAWAII  
UNIVERSITY OF HAWAII AT MANOA  
COLLEGES OF ARTS AND SCIENCES  
COLLEGE OF SOCIAL SCIENCES

OFFICE OF THE DEAN

CHART III-c

DEPARTMENT OF ECONOMICS

Chair (appointed from faculty positions)

Secretary II, SR-14, #15351 1.00

Clerk-Stenographer III, SR-11, #14360 1.00

Faculty Positions: 17.50

Full time: #82286, 82679, 82777, 82838, 83023  
83411, 83484, 83748, 83943, 83953  
84047, 84054, 84200, 84643, 84815  
85027, 83611

Part time: #83650 (.50)

Graduate Assistants: 4.50

#88061, 88175, 88193, 88233, 88248  
88262, 88420, 88517, 88631

-----  
24.00

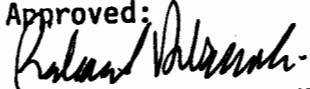
Approved:   
Richard Dubanoski, Dean  
College of Social Sciences

CHART UPDATED  
DATE JUL - 1 1998

STATE OF HAWAII  
UNIVERSITY OF HAWAII  
UNIVERSITY OF HAWAII AT MANOA  
COLLEGES OF ARTS AND SCIENCES  
COLLEGE OF SOCIAL SCIENCES

OFFICE OF THE DEAN

CHART III-d

DEPARTMENT OF ETHNIC STUDIES

Chair, (appointed from faculty positions)

Secretary II, SR-14, #24006

1.00

Faculty Positions:

8.00

Full time: #83195, 85586, 84790, 84805, 84801, 84803, 84807  
84813

-----  
9.00

Approved:

*Richard Dubanoski*  
Richard Dubanoski, Dean  
College of Social Sciences  
JUL 22 1998

CHART UPDATED  
JUL - 1 1998  
DATE \_\_\_\_\_

STATE OF HAWAII  
UNIVERSITY OF HAWAII  
UNIVERSITY OF HAWAII AT MANOA  
COLLEGES OF ARTS AND SCIENCES  
COLLEGE OF SOCIAL SCIENCES

OFFICE OF THE DEAN

CHART III-e

DEPARTMENT OF GEOGRAPHY

Chair (appointed from faculty positions)

Secretary II, SR-14, #14358 1.00

Clerk-Stenographer II, SR-09, #18580 1.00

UH Educational Specialist II, P-06, #80641 1.00

Faculty Positions: 15.50

Full time: #84917, 82332, 82681, 82708, 83935, 82680, 84791  
84209, 84254, 84518, 84565, 84841, 85298, 82328, 84868

Part time: #82338 (.50)

Graduate Assistants: 6.00

#88065, 88103, 88110, 88140, 88189  
88217, 88232, 88391, 88416, 88446,  
84864, 88620

-----  
24.50


Approved:  
  
Richard Dubanoski, Dean  
College of Social Sciences  
JUL 22 1998

CHART UPDATED  
DATE JUL - 1 1998

STATE OF HAWAII  
UNIVERSITY OF HAWAII  
UNIVERSITY OF HAWAII AT MANOA  
COLLEGES OF ARTS AND SCIENCES  
COLLEGE OF SOCIAL SCIENCES

OFFICE OF THE DEAN

CHART III-f

DEPARTMENT OF JOURNALISM

Chair (appointed from faculty positions)

Secretary II, SR-14, #13807

1.00

Faculty Positions:

8.00

Full time: #82500, 82611, 82946, 83458  
84115, 84478, 84792, 84809

-----  
9.00

Approved:

*Richard Dubanoski*

Richard Dubanoski, Dean  
College of Social Sciences  
JUL 22 1998

CHART UPDATED

DATE JUL - 1 1998



STATE OF HAWAII  
UNIVERSITY OF HAWAII  
UNIVERSITY OF HAWAII AT MANOA  
COLLEGES OF ARTS AND SCIENCES  
COLLEGE OF SOCIAL SCIENCES

OFFICE OF THE DEAN

CHART III-g

DEPARTMENT OF POLITICAL SCIENCE

Chair (appointed from faculty positions)

Secretary II, SR-14, #11112 1.00

Clerk-Stenographer II, SR-09, #14363 1.00

Clerk-Stenographer II, SR-09, #21775 1.00

Faculty Positions: 24.00

Full time: #82145, 82278, 82317, 82672, 82823

82913, 83085, 83162, 83194, 83197

83311, 83370, 83621, 83753, 83858

84023, 84042, 84109, 84130, 84234

84556, 84800, 84812

Part time: #83277, 83778, 84059, 88549

Graduate Assistants: 3.50

#88076, 88090, 88238, 88336, 88407

88676, 84880

-----  
30.50

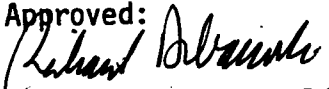
Approved:   
Richard Dubanoski, Dean  
College of Social Sciences

CHART UPDATED  
DATE JUL - 1 1998

STATE OF HAWAII  
UNIVERSITY OF HAWAII  
UNIVERSITY OF HAWAII AT MANOA  
COLLEGES OF ARTS AND SCIENCES  
COLLEGE OF SOCIAL SCIENCES

OFFICE OF THE DEAN

CHART III-h

POPULATION STUDIES PROGRAM	
Director (appointed from faculty positions)	.00
	-----
	0.00

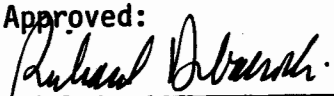
Approved:  
  
Richard Dubanoski, Dean  
College of Social Sciences

CHART UPDATED  
DATE JUL - 1 1998

STATE OF HAWAII  
UNIVERSITY OF HAWAII  
UNIVERSITY OF HAWAII AT MANOA  
COLLEGES OF ARTS AND SCIENCES  
COLLEGE OF SOCIAL SCIENCES

OFFICE OF THE DEAN

CHART III-i

DEPARTMENT OF PSYCHOLOGY

Chair (appointed from faculty positions)

Director, Clinical Studies (appointed from faculty positions)

Secretary II, SR-14, #12856	1.00
Clerk-Stenographer III, SR-11, #19052	1.00
Account-Clerk II, SR-09, #21971	1.00
UH Educational Specialist III, P-09, #80638	1.00

Faculty Positions:	25.75
--------------------	-------

Full time: #82198, 82294, 82398, 82412, 82471, 82537, 82564  
82615, 82916, 83092, 83110, 83507, 83626, 84131  
84225, 84346, 84416, 84491, 84497, 84827, 84866  
85075, 88005

Part time: #82192, 83799, 84319, 84861M, 84810, 83498

Graduate Assistants:	3.75
#85148, 88046, 88060, 88252, 88320, 88362, 88511	
88559	-----

33.50

Approved:

*Richard Dubanoski*

Richard Dubanoski, Dean  
College of Social Sciences

JUL 22 1998

CHART UPDATED  
DATE JUL - 1 1998

STATE OF HAWAII  
UNIVERSITY OF HAWAII  
UNIVERSITY OF HAWAII AT MANOA  
COLLEGES OF ARTS AND SCIENCES  
COLLEGE OF SOCIAL SCIENCES

OFFICE OF THE DEAN

CHART III-j

PUBLIC ADMINISTRATION PROGRAM

Director (appointed from faculty positions)

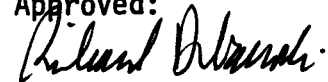
Faculty Positions:

4.00

Full time: #84788, 84789, 84797, 84798

-----  
4.00

Approved:



Richard Dubanoski, Dean  
College of Social Sciences

JUL 22 1998

CHART UPDATED

DATE JUL - 1 1998

OFFICE OF THE DEAN

CHART III-k

DEPARTMENT OF SOCIOLOGY	
Chair (appointed from faculty positions)	
Secretary II, SR-14, #13485	1.00
Clerk-Stenographer II, SR-09, #16953	1.00
UH Student Services Specialist II, P-06, #80640	1.00
Faculty Positions:	19.00
Full time: #82097, 82114, 82125, 82204, 82323, 82605	
83050, 83164, 83867, 84076, 84121, 84237	
84286, 84456, 84502, 84504, 84575, 84616	
84642	
Graduate Assistants:	5.50
#88008, 88100, 88182, 88208, 88268, 88408	
88485, 88498, 88533, 88616, 88392	
	-----
	27.50

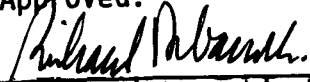
Approved:  
  
Richard Dubanoski, Dean  
College of Social Sciences  
JUL 22 1998

CHART UPDATED  
DATE JUL - 1 1998

STATE OF HAWAII  
UNIVERSITY OF HAWAII  
UNIVERSITY OF HAWAII AT MANOA  
COLLEGES OF ARTS AND SCIENCES  
COLLEGE OF SOCIAL SCIENCES

OFFICE OF THE DEAN

CHART III-1

DEPARTMENT OF URBAN AND REGIONAL PLANNING

Chair (appointed from faculty positions)

Secretary II, SR-14, #15640

1.00

Faculty Positions:

6.00

Full time: #82539, 83624, 84060, 84522, 85736, 82377

-----  
7.00

Approved:



Richard Dubanoski, Dean  
College of Social Sciences  
JUL 22 1998

CHART UPDATED

DATE JUL - 1 1998

STATE OF HAWAII  
UNIVERSITY OF HAWAII  
UNIVERSITY OF HAWAII AT MANOA  
COLLEGES OF ARTS AND SCIENCES  
COLLEGE OF SOCIAL SCIENCES

OFFICE OF THE DEAN

CHART III-m

WOMEN'S STUDIES PROGRAM

Director (appointed from faculty positions)

Secretary II, SR-14, #31328 .75

Faculty Positions:

5.50

Full time: #82870, 86071, 84817, 84804

Part time: #84816 (.50), 84057 (.50), 85962 (.50)

-----  
6.25

Approved:

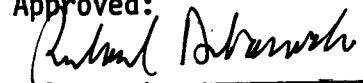
  
Richard Dubanoski, Dean  
College of Social Sciences  
JUL 22 1998

CHART UPDATED

DATE JUL - 1 1998

STATE OF HAWAII  
UNIVERSITY OF HAWAII  
UNIVERSITY OF HAWAII AT MANOA  
COLLEGES OF ARTS AND SCIENCES  
COLLEGE OF SOCIAL SCIENCES

OFFICE OF THE DEAN

CHART III-n

Spark M. Matsunaga Institute for Peace

Executive Committee

Associate Professor (Director) #88092

Secretary I , SR-12, #42279

1.00

UH Educational Specialist III, P-09, #80358

1.00

Faculty Positions:

3.50

Full time: #88732, 88112

Part time: #88113 (.50)

-----  
5.50

University Peace  
Institute Council

Approved:


  
Richard Dubanoski, Dean  
College of Social Sciences  
JUL 22 1998

CHART UPDATED

DATE JUL - 1 1998