

OFFICE OF THE PRESIDENT AND CHANCELLOR (UHM)

State of Hawai'i
University of Hawai'i
University of Hawai'i at Mānoa

OFFICE OF THE VICE PRESIDENT FOR STUDENT AFFAIRS

Chart IV-A

Office:

UHM Student Services

Chart: IV

[CURRENT]

OFFICE OF ADMINISTRATIVE SERVICES

Chart IV-A

OFFICE OF THE DIRECTOR OF STUDENT
EQUITY, EXCELLENCE AND DIVERSITY

Chart IV-A

OFFICE OF THE DEAN OF STUDENTS
AND STUDENT SERVICES (UHM)

Chart IV-A

OFFICE OF THE DIRECTOR OF UNIVERSITYWIDE
STUDENT AFFAIRS/ASSISTANT TO THE VP

Chart IV-A

Center for Adults
Returning to Education
Chart IV-O

College Opportunities
Program
Chart IV-L

Co-curricular Activities,
Programs and Services
Chart IV-D

Career Services
Chart IV-I

Admissions and
Records
Chart IV-B

Financial Aid Services
Chart IV-C

Hawai'i Opportunity
Program in Education
Chart IV-P

KOKUA Program
Chart IV-S

Counseling and
Student Development
Center
Chart IV-J

Children's Center
Chart IV-N

Operation Kua'ana
Chart IV-Q

Operation Manong
Chart IV-R

International
Student Services
Chart IV-H

School and College
Services
Chart IV-F

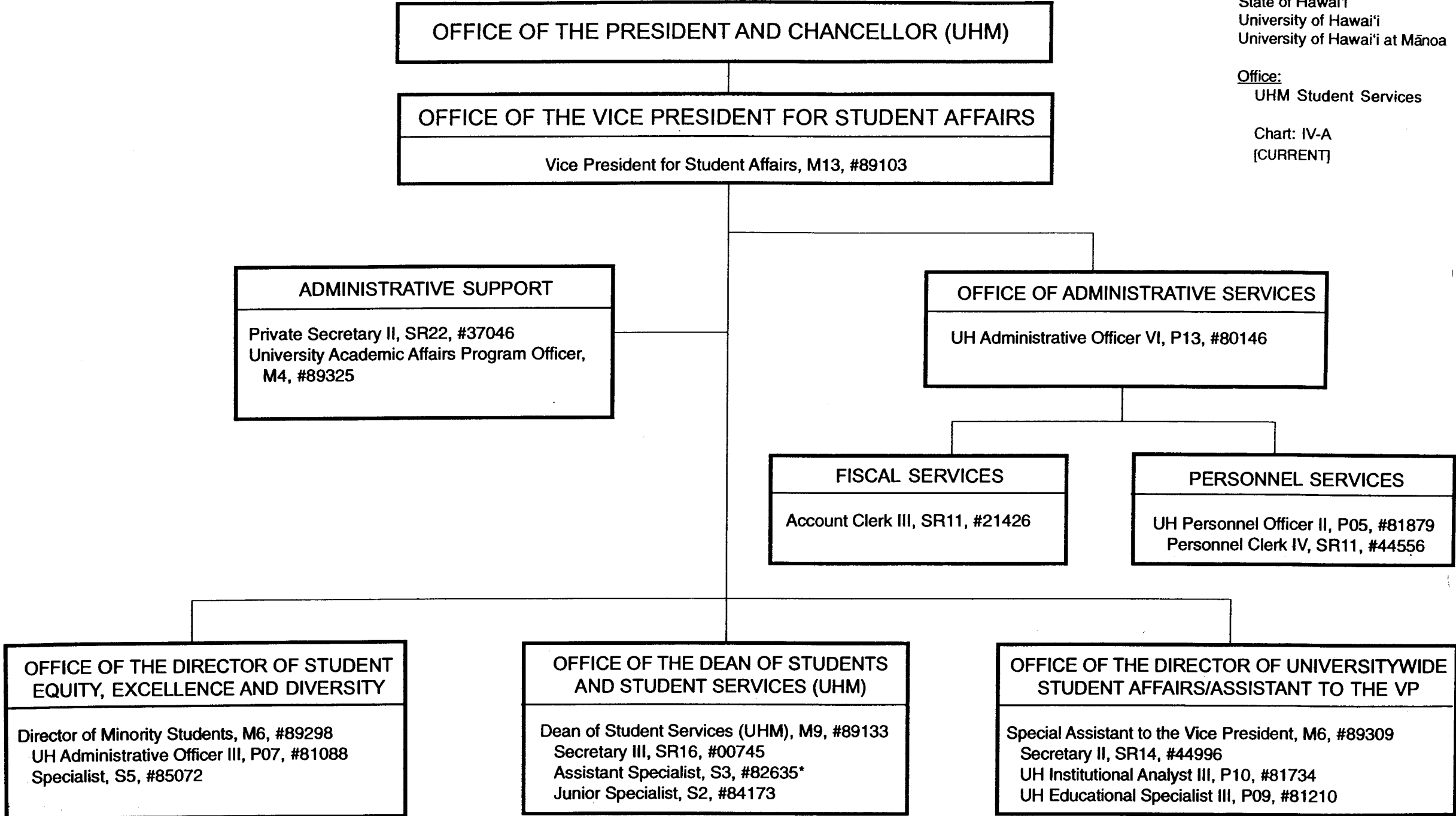
Women's Center
Chart IV-M

Student Employment and
Cooperative Education
Chart IV-G

University Health
Services
Chart IV-K

Student Housing
Services
Chart IV-E

CHART UPDATED
DATE JUL - 1 1998



Pending Establishment:
UH Student Services Specialist, #92573F

CHART UPDATED
JUL - 1 1998
DATE _____

General Funds (UOH 100) 16.00
General Funds (UOH 900) 2.00
*Trf to Acad Aff 1.00

Office:
UHM Student Services
Admissions and Records

Chart: IV-B
[CURRENT]

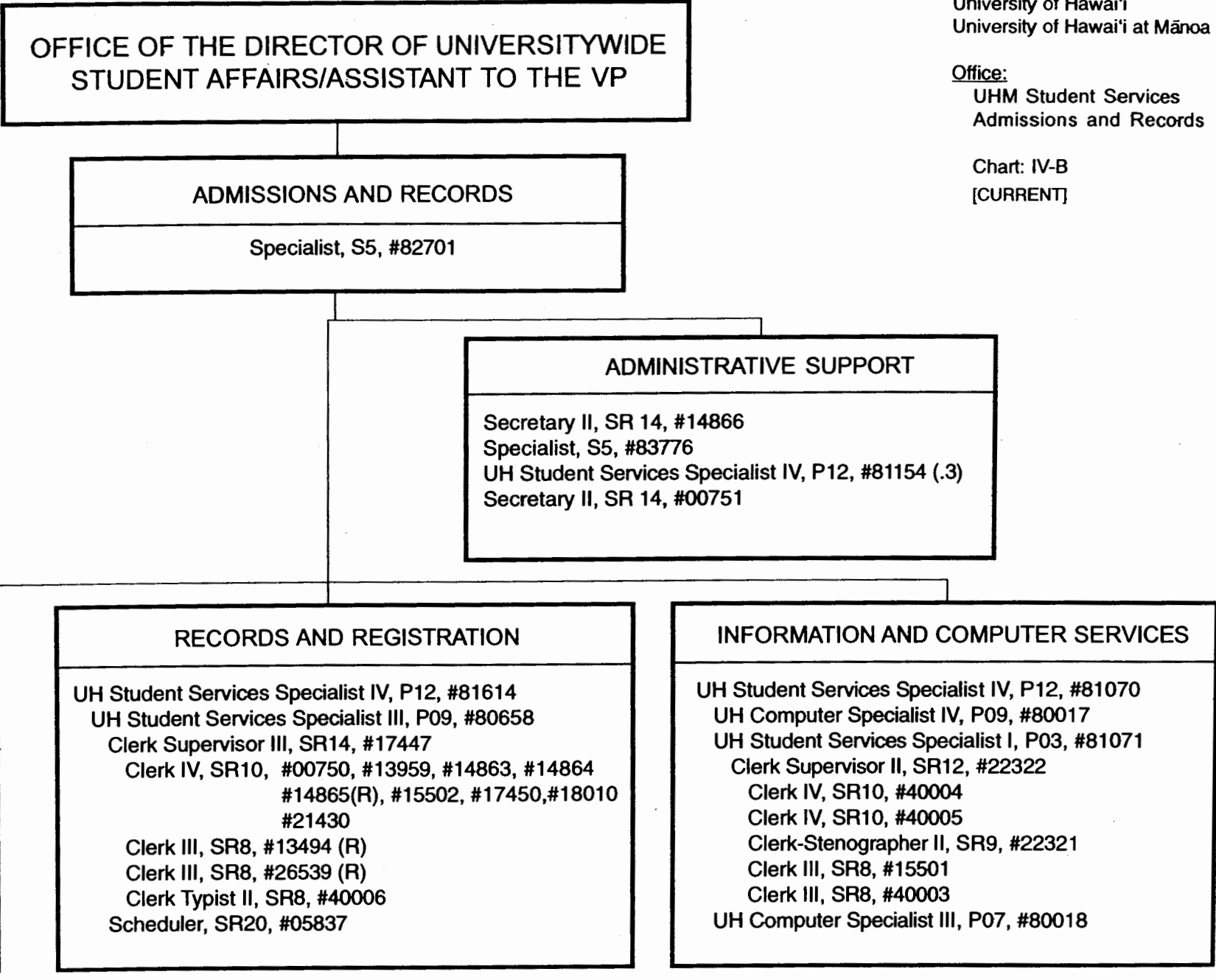


CHART UPDATED
DATE JUL - 1 1998

General Funds	43.00
Revolving Funds	3.00

Office:

UHM Student Services
Financial Aid Services

Chart: IV-C
[CURRENT]

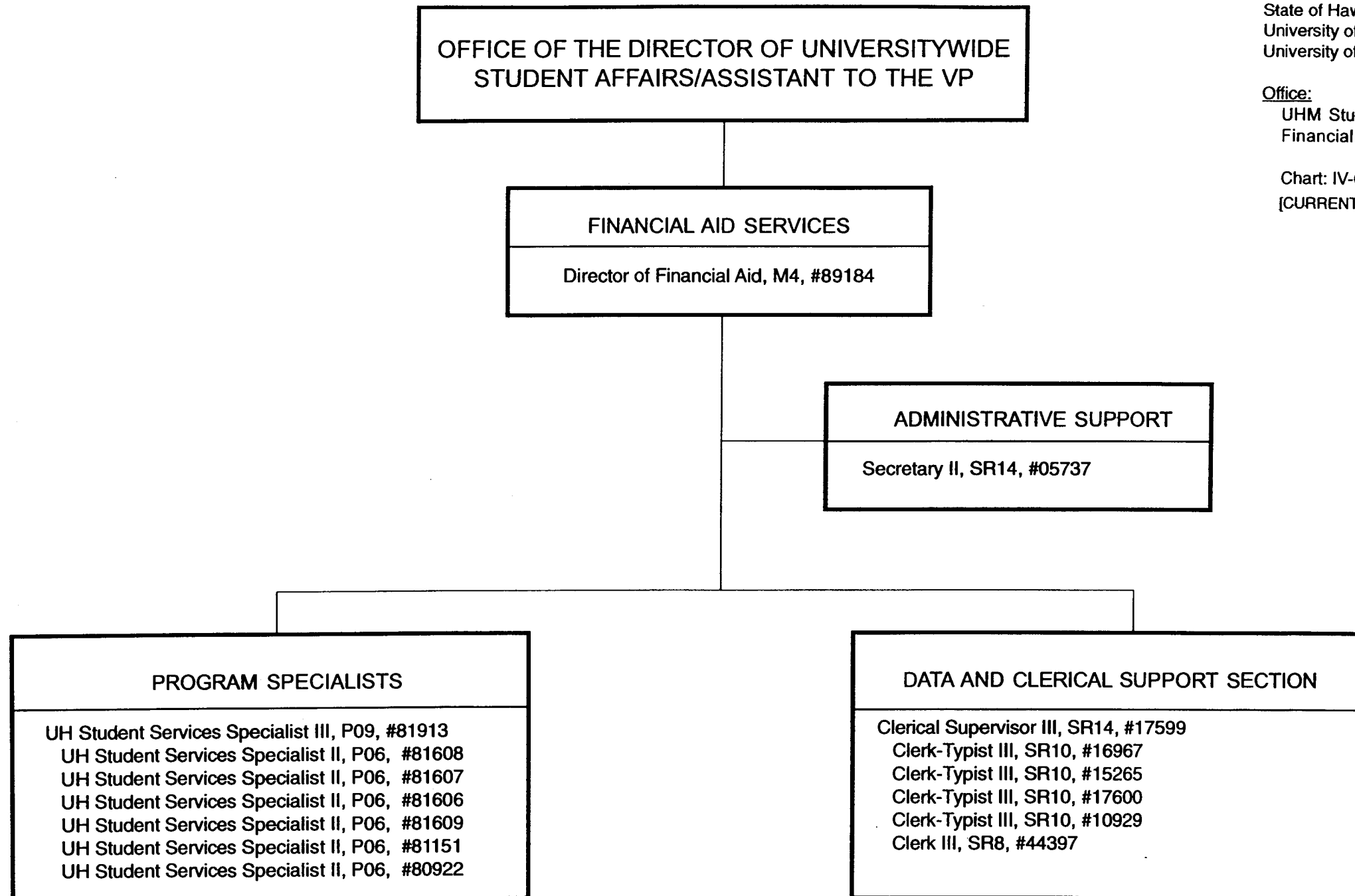


CHART UPDATED
DATE JUL - 1 1998

General Funds 15.00

OFFICE OF THE DEAN OF STUDENTS AND STUDENT SERVICES
(UHM)

State of Hawai'i
University of Hawai'i
University of Hawai'i at Mānoa

Office:
UHM Student Services
Co-Curricular Activities,
Programs and Services

Chart: IV-D
[CURRENT]

CO-CURRICULAR ACTIVITIES, PROGRAMS & SERVICES

Director of Bureau of Student Activities, M4, #89190

ADMINISTRATIVE AND FISCAL SUPPORT

UH Administrative Officer III, P07, #80163 (R)
UH Adm/Fiscal Support Specialist, P01, #80649 (R)
Account Clerk IV, SR13, #25700 (R)
Account Clerk II, SR08, #45362 (R)

CLERICAL SUPPORT

Secretary II, SR14, #13587
Clerk-Typist III, SR10, #28134 (R)
Clerk-Typist II, SR08, #25699 (R)
Clerk II, SR06, #25698 (R)

INTRAMURAL SPORTS

Specialist, S5, #83512
Specialist, S5, #85083
Junior Specialist, S2, #83788
Clerk-Typist II, SR08, #26460

STUDENT LEADERSHIP DEVELOPMENT
& CO-CURRICULAR INTERVENTIONS
PROGRAMS

Assistant Specialist, S3, #82864
Junior Specialist, S2, #83668
Junior Specialist, S2, #82573
Assistant Specialist, S3, #82597
UH Student Services Specialist II, P06, #81510(R)
UH Student Services Specialist II, P06, #81374(R)
UH Student Services Specialist II, P06, #80025(R)
UH Publication Specialist III, P07, #81186(R)
UH Adm/Fiscal Support Specialist, P01, #81137(R)
Junior Specialist, S2, #88334(R)
UH Publication Spec II, P05, #81486(R)
UH Publication Spec I, P03, #81488(R)
UH Publication Spec I, P03, #81506(R)

OPERATIONAL PROGRAMS,
FACILITIES AND SERVICES

UH Student Services Specialist III, P09, #80660(R)
Building Maintenance Worker I, WB09, #28597(R)
Janitor II, WB02, #25329(R), #25392(R),
#44089(R), #46560(R)
School Custodian II, BC02, #44109(R)
Bldg & Gmds Util Worker, #BC05, #45379(R),
#44085(R)
UH Student Services Specialist II, P06, #80631(R)
UH Student Services Specialist I, P03, #80942(R)
Junior Specialist, S2, #88765(R)

OFFICE OF THE DEAN OF STUDENTS AND STUDENT SERVICES (UHM)

State of Hawai'i
University of Hawai'i
University of Hawai'i at Mānoa

Office:
UHM Student Services
Student Housing Services

Chart: IV-E
[CURRENT]

STUDENT HOUSING SERVICES
Director of Student Housing,
M6, #89007 (R)

UH Computer Spec II,
P05, #81361 (R)
UH Computer Spec,
#96508F (R)*

Secretary II,
SR14, #00743 (R)

ASSISTANT DIRECTOR
UH Student Svs Spec IV,
P12, #80630 (R)

PHYSICAL PLANT
UH Student Svs Spec II,
P06, #80629 (R)
UH Registered Architect I,
P13, #77005 (a)(R)
UH Environmental Safety Spec,
P05, #81680 (a)(R)

EDUCATIONAL
DEVELOPMENT
UH Student Svs Spec II,
P06, #81611 (R)

FISCAL
PERSONNEL
UH Adm Officer IV,
P09, #80193 (R)
UH Adm Officer II,
P05, #81103 (R)
Account Clerk III,
SR11, #24026 (R)
Clerk-Steno III,
SR11, #18701 (R)
Cashier I,
SR10, #28336 (R)

CONFERENCE
ASSIGNMENTS
OFF-CAMPUS HSG
UH Student Svs Spec II,
P06, #81612 (R)
Clerk-Typist IV,
SR12, #34981 (R)
Clerk-Typist II,
SR8, #18115 (R)
SR8, #15287 (R)
Clerk Typist,
#96005F (R)*

MAUKA/MAKAI
UH Student Hsg Coord II,
P07, #80598 (R)
UH Student Hsg Coord I,
P05, #80594 (R)
Clerk-Typist II,
SR8, #24249 (R), #23582 (R)
Bldg Maint Worker I,
BC9, #31245 (R), #13578 (R)
Groundskeeper II,
WS2, #31246 (R)

HALE ALOHA
UH Student Hsg Coord II,
P07, #80597 (R)
Clerk-Steno II,
SR9, #24250 (R)
Bldg Maint Worker I,
BC9, #31242 (R)
Groundskeeper II,
WS2, #24251 (R)
UH Student Hsg Coord,
#96507F (R)*

HALE NOELANI
UH Student Hsg Coord I,
P05, #80924 (R)
Clerk-Typist II,
SR8, #28545 (R)
Bldg Maint Worker I,
BC9, #23493 (R)

HALE WAINANI
UH Student Hsg Coord I,
P05, #80595(R)
Clerk-Typist II,
SR8, #31244 (R)
Bldg Maint Worker I,
BC9, #31241 (R)
Groundskeeper II,
WS2, #31243 (R)

SECURITY
Univ Security Officer I,
SR14, #46108 (a)(R)
SR14, #46110 (a)(R)

(a) Student Housing Services position assigned to and supervised by Campus Operations
Pending Establishment
Positions pending abolishment due to 95-96 RIF action but still included in appropriation: #13566, #31273, #35375, #36106, #46109

OFFICE OF THE DEAN OF STUDENTS
AND STUDENT SERVICES (UHM)

SCHOOL AND COLLEGE SERVICES
Assistant Specialist, S3, #82771

ADMINISTRATIVE SUPPORT
Secretary II, SR14, #25830

Associate Specialist, S4, #88147
Assistant Specialist, S3, #82637
UH Student Services Specialist II, P06, #81134
UH Student Services Specialist II, P06, #80463

State of Hawai'i
University of Hawai'i
University of Hawai'i at Mānoa

Office:
UHM Student Services
School and College Services

Chart: IV-F
[CURRENT]

CHART UPDATED
DATE JUL - 1 1998

Office:

UHM Student Services
Student Employment and
Cooperative Education

Chart: IV-G

[CURRENT]

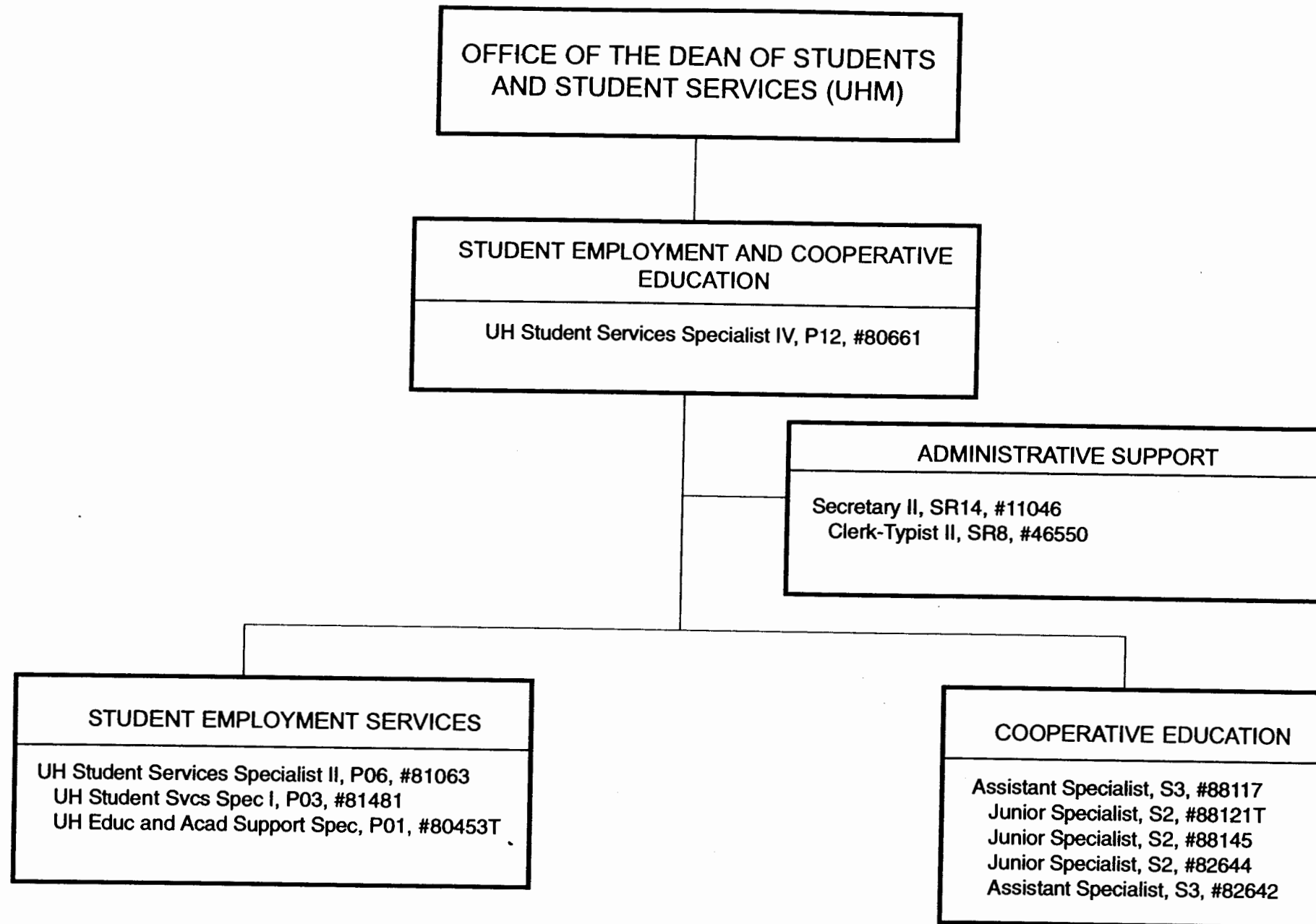


CHART UPDATED

DATE JUL - 1 1998

General Funds 9.00 (perm)
General Funds 2.00 (auth temp)

Office:
UHM Student Services
International Student
Services

Chart: IV-H
[CURRENT]

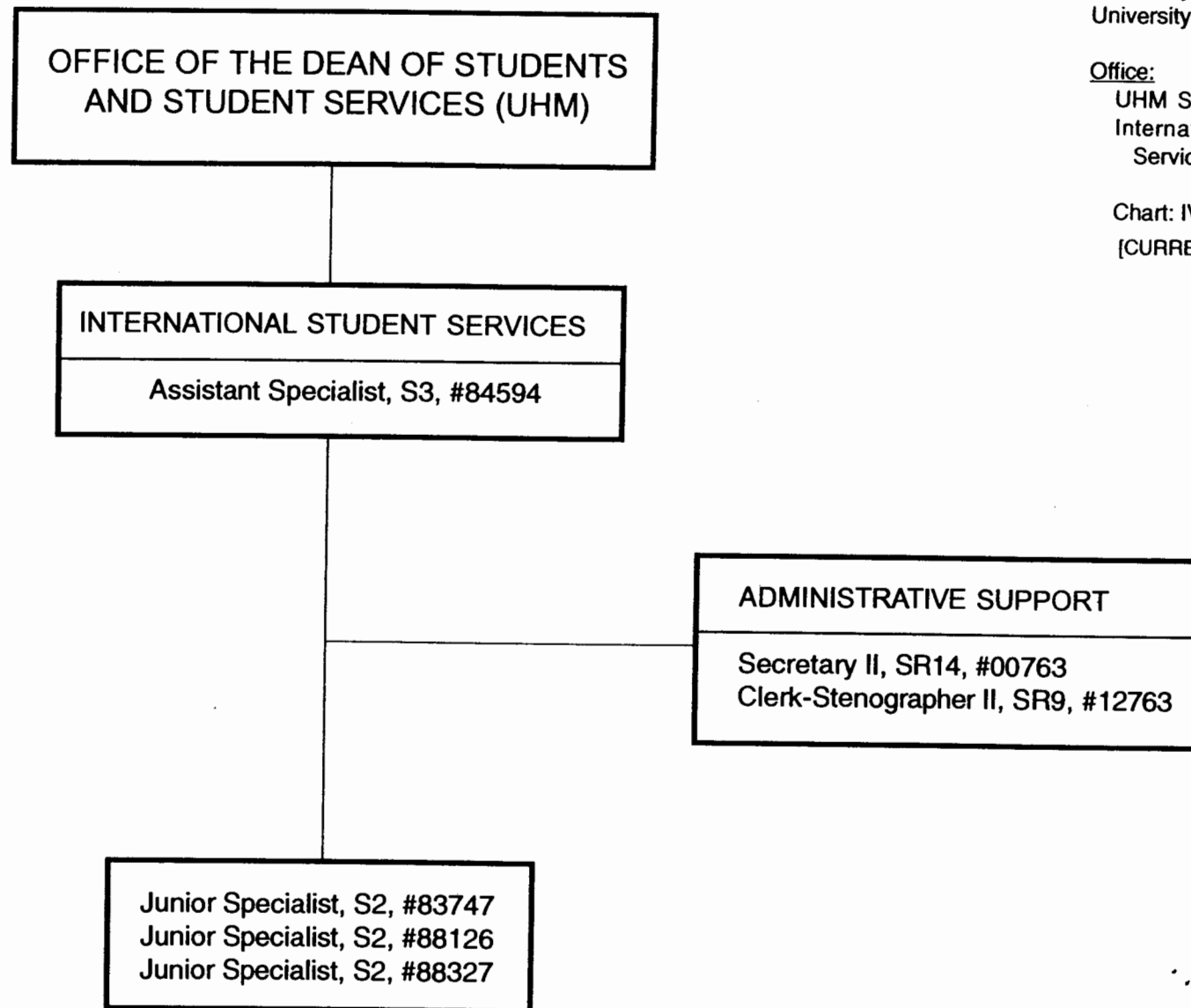


CHART UPDATED
DATE JUL - 1 1998

General Funds 4.00*

*2.00 FTE (#88126, #88327 for Study Abroad
transferred to Academic Affairs)

OFFICE OF THE DEAN OF STUDENTS
AND STUDENT SERVICES (UHM)

CAREER SERVICES
Specialist, S5, #83382

ADMINISTRATIVE SUPPORT
Secretary II, SR14, #14337

Junior Specialist, S2, #88125
Assistant Specialist, S3, #83548
Associate Specialist, S4, #88325
Junior Specialist, S2, #88326
UH Student Services Specialist II, P06, #81434

State of Hawai'i
University of Hawai'i
University of Hawai'i at Mānoa

Office:
UHM Student Services
Career Services

Chart: IV-I
[CURRENT]

CHART UPDATED
DATE JUL - 1 1998

OFFICE OF THE DEAN OF STUDENTS
AND STUDENT SERVICES (UHM)

COUNSELING AND STUDENT
DEVELOPMENT CENTER

Specialist, S5, #83151

ADMINISTRATIVE SUPPORT

Secretary II, SR14, #00746

LEARNING ASSISTANCE

Assistant Specialist, S3, #84554
Assistant Specialist, S3, #88143

TESTING

UH Student Services Specialist II, P06, #80632
Junior Specialist, S2, #84869 (.25) (s)

COUNSELING

Specialist, S5, #82048 (.50)
Specialist, S5, #83635 (.50)
Specialist, S5, #82695
Associate Specialist, S4, #82698
Assistant Specialist, S3, #83035
Assistant Specialist, S3, #83114
Associate Specialist, S4, #84139

CHART UPDATED

DATE

JUN - 1 1998

General Funds
Special Funds

11.00
.25

OFFICE OF THE DEAN OF STUDENTS
AND STUDENT SERVICES (UHM)

UNIVERSITY HEALTH SERVICES

Specialist, S5, #82341

PHARMACY

UH Pharmacist, P12, #81877 (.25) (R)

ADMINISTRATIVE SUPPORT

Assistant Specialist, S3, #83539
Secretary II, SR14, #15353
Account Clerk III, SR11, #21512
Medical Records Technician VI, SR13, #03723
Clerk-Typist II, SR8, #35147 (.50)

MEDICAL STAFF

Specialist, S5, #84576 (.50) (R)
Specialist, S5, #84576A (.50) (R)
Specialist, S5, #83261 (.50) (R)
Specialist, S5, #83397 (.50) (R)
Specialist, S5, #84581 (.50)

NURSING STAFF

Registered Professional Nurse IV, SR22, #10312 (R)
Registered Professional Nurse III, SR20, #13616 (R)
Registered Professional Nurse III, SR20, #22672 (R)
Registered Professional Nurse III, SR20, #13615 (R)
Registered Professional Nurse III, SR20, #18091 (R)
Registered Professional Nurse III, SR20, #13614

FAMILY PLANNING CLINIC

Registered Professional Nurse V,
SR24, #41706 (R)

LABORATORY

UH Medical Technician, P07, #80671 (.50)

State of Hawai'i
University of Hawai'i
University of Hawai'i at Mānoa

Office:

UHM Student Services
University Health Services

Chart: IV-K

[CURRENT]

CHART UPDATED

DATE JUL - 1 1998

General Funds
Revolving Funds

7.50
8.25

OFFICE OF THE DIRECTOR OF STUDENT
EQUITY, EXCELLENCE AND DIVERSITY

COLLEGE OPPORTUNITIES PROGRAM
UH Educational Specialist IV, P12, #80582

ADMINISTRATIVE SUPPORT
Secretary II, SR14, #23086

UH Student Services Specialist II, P06, #80628
UH Student Services Specialist II, P06, #81736 (.50)
UH Student Services Specialist I, P03, #80606

State of Hawai'i
University of Hawai'i
University of Hawai'i at Mānoa

Office:
UHM Student Services
College Opportunities
Program

Chart: IV-L
[CURRENT]

CHART UPDATED
DATE JUL - 1 1998

OFFICE OF THE DIRECTOR OF STUDENT
EQUITY, EXCELLENCE AND DIVERSITY

WOMEN'S CENTER

Junior Specialist, S2, #88123T, (.50)
Junior Specialist, S2, #88144T, (.50)
Clerk-Typist II, SR8, #44988T, (.50)

State of Hawai'i
University of Hawai'i
University of Hawai'i at Mānoa

Office:

UHM Student Services
Women's Center

Chart: IV-M
[CURRENT]

Authorized Temporary Positions

General Funds

CHART UPDATED
DATE JUL - 1 1998

1.50 (auth temp)

OFFICE OF THE DEAN OF STUDENTS
AND STUDENT SERVICES (UHM)

CHILDREN'S CENTER
Specialist, S5, #88318

ADMINISTRATIVE SUPPORT
UH Early Childhood Spec IV, P09, #80232
UH Administrative Officer I, P03, #80739(R)

TEACHING STAFF
UH Early Childhood Spec IV, P09, #80029
UH Early Childhood Spec III, P07, #80109
UH Early Childhood Spec II, P05, #80233
UH Early Childhood Spec III, P07, #80234T
UH Early Childhood Spec II, P05, #80424T
UH Early Childhood Spec III, P07, #80455T
UH Early Childhood Spec III, P07, #80541 (R)
UH Early Childhood Spec II, P05, #80588 (R)
UH Early Childhood Spec II, P05, #80611 (R)
UH Early Childhood Spec IV, P09, #80496T (.75)

State of Hawai'i
University of Hawai'i
University of Hawai'i at Mānoa

Office:
UHM Student Services
Children's Center

Chart: IV-N
[CURRENT]

CHART UPDATED
DATE JUL - 1 1998

General Funds	5.00 (perm)
General Funds	3.75 (auth temp)
Revolving Funds	4.00

OFFICE OF THE DIRECTOR OF STUDENT
EQUITY, EXCELLENCE AND DIVERSITY

CENTER FOR ADULTS
RETURNING TO EDUCATION

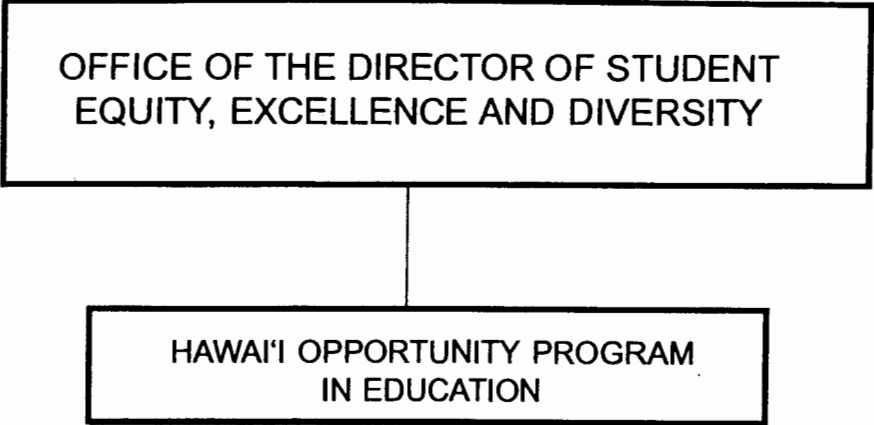
Associate Specialist, S4, #88317
Junior Specialist, S2, #88762
Clerk Typist II, SR8, #43364 (.50)

State of Hawai'i
University of Hawai'i
University of Hawai'i at Mānoa

Office:
UHM Student Services
Center for Adults
Returning to Education

Chart: IV-O
[CURRENT]

CHART UPDATED
DATE JUL - 1 1998



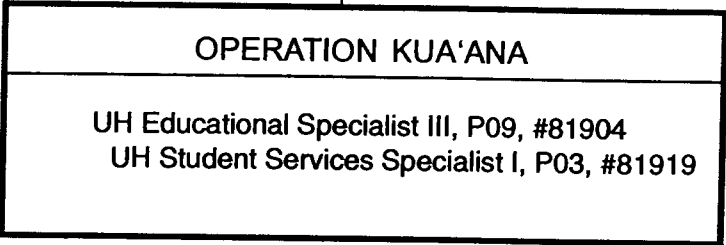
State of Hawai'i
University of Hawai'i
University of Hawai'i at Mānoa

Office:
UHM Student Services
Hawai'i Opportunity
Program in Education

Chart: IV-P
[CURRENT]

CHART UPDATED
DATE JUL - 1 1998

OFFICE OF THE DIRECTOR OF STUDENT
EQUITY, EXCELLENCE AND DIVERSITY



State of Hawai'i
University of Hawai'i
University of Hawai'i at Mānoa

Office:
UHM Student Services
Operation Kua'ana

Chart: IV-Q
[CURRENT]

General Funds

CHART UPDATED
DATE JUL - 1 1998
2.00

OFFICE OF THE DIRECTOR OF STUDENT
EQUITY, EXCELLENCE AND DIVERSITY

State of Hawai'i
University of Hawai'i
University of Hawai'i at Mānoa

Office:
UHM Student Services
Operation Manong

Chart: IV-R
[CURRENT]

OPERATION MANONG

UH Educational Specialist III, P09, #80517

ADMINISTRATIVE SUPPORT

Clerk-Typist II, SR8, #43052

Associate Specialist, S4, #82281

UH Student Services Specialist I, P03, #81799

UH Student Services Specialist I, P03, #81801

CHART UPDATED
DATE JUL - 1 1998

General Funds

5.00

OFFICE OF THE DIRECTOR OF STUDENT
EQUITY, EXCELLENCE AND DIVERSITY

KOKUA PROGRAM

UH Educational Specialist III, P09, #80666

UH Educational Specialist I, P03, #80636

UH Educational Specialist I, P03, #80608

UH Educational Specialist II, P06, #81566

UH Educational Specialist I, P03 #81102

State of Hawai'i
University of Hawai'i
University of Hawai'i at Mānoa

Office:
UHM Student Services
KOKUA Program

Chart: IV-S
[CURRENT]

CHART UPDATED
DATE JUL - 1 1998